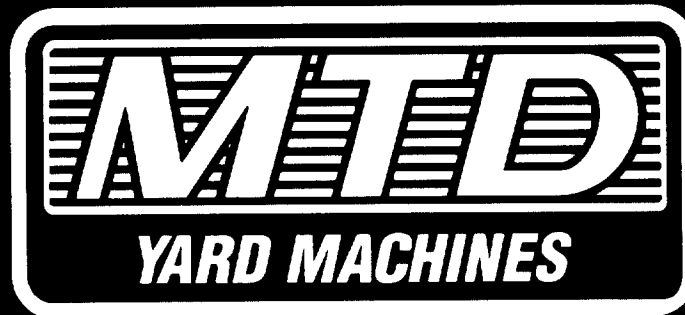


# ILLUSTRATED PARTS

AMERICAN  AMERICAN  
M A D E O W N E D  
OUTDOOR POWER EQUIPMENT

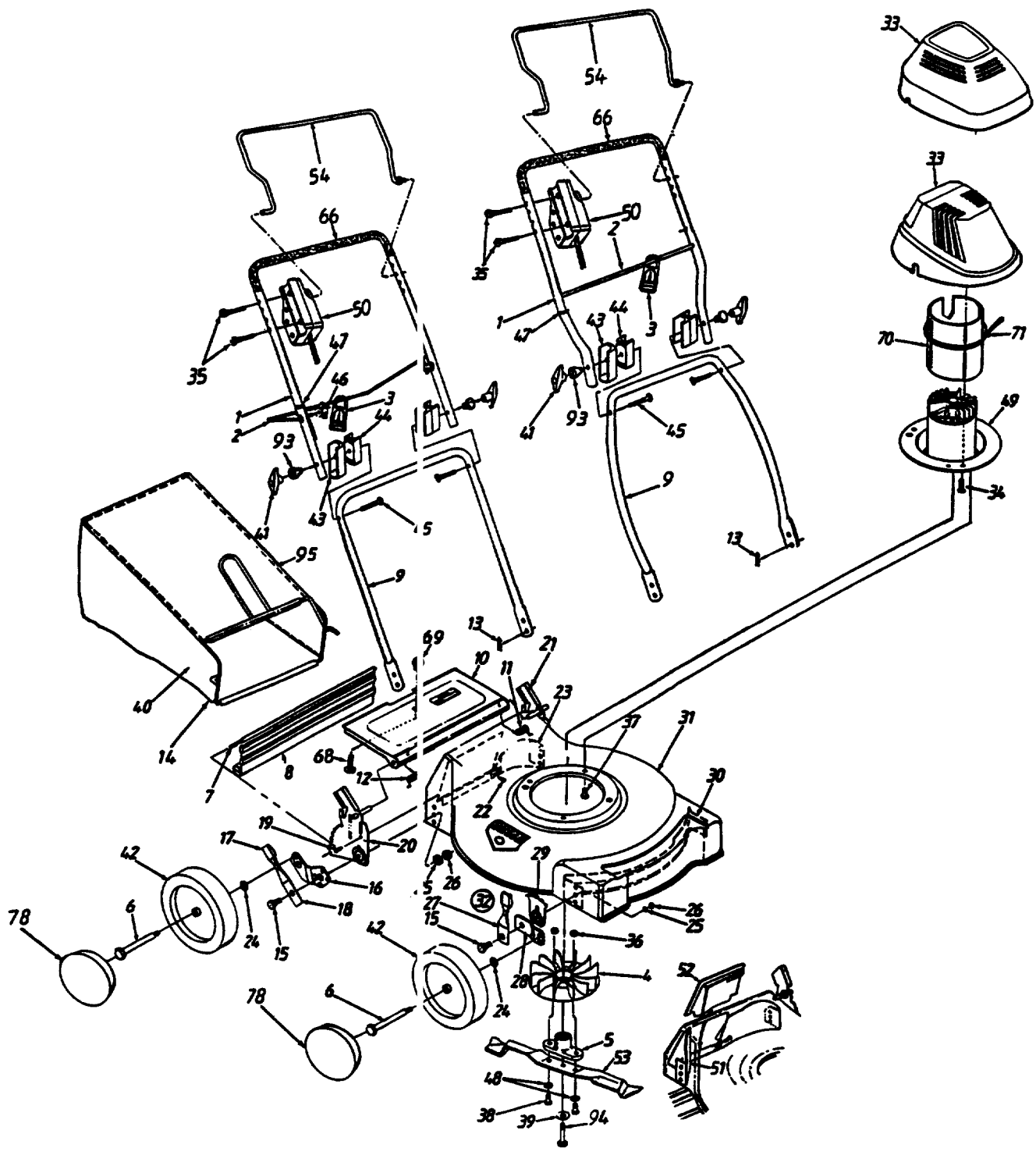


## 1996

## ELECTRIC AND BATTERY POWERED MOWERS

Model Number	Pages
186-407-000 .....	2, 3
186-707-000 .....	4, 5
186-708-000 .....	6, 7
186-798-000 .....	8, 9

# Model 407

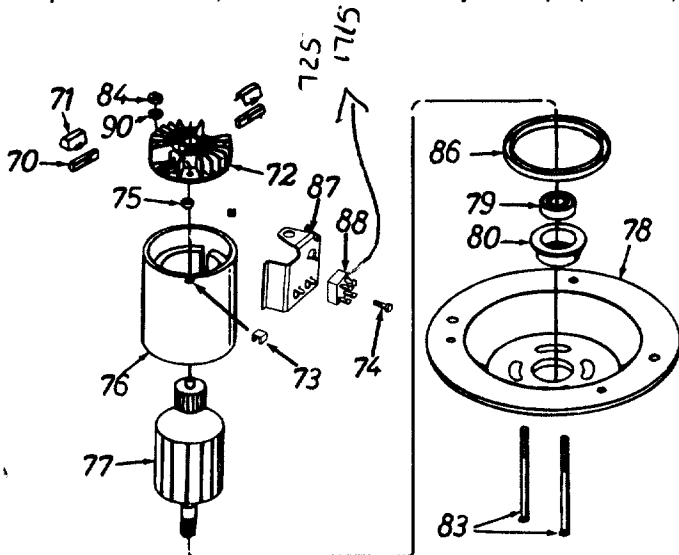


# Model 407

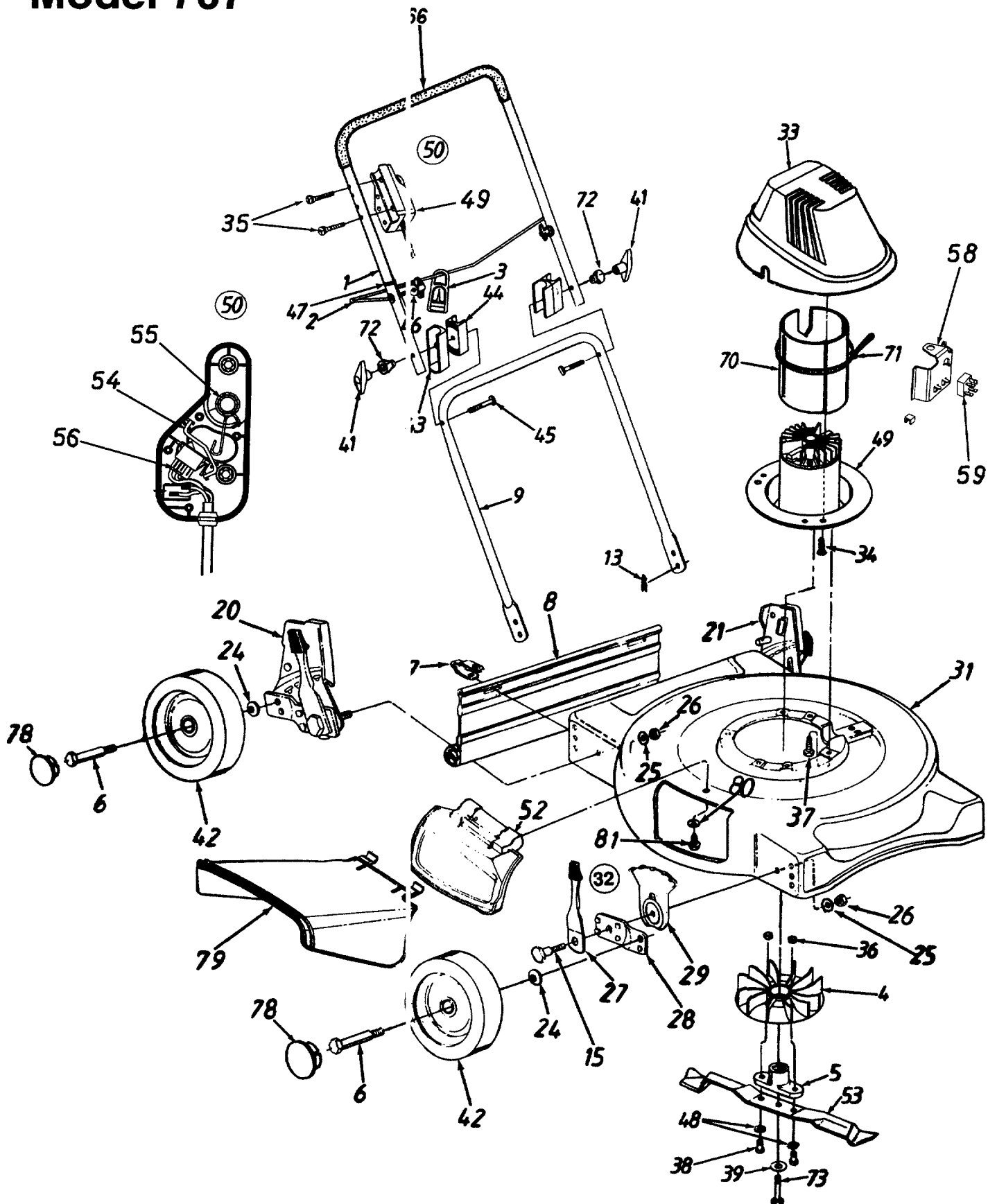
## PARTS LIST FOR MODEL 407 ROTARY MOWER

REF. NO.	PART NO.	CODE	DESCRIPTION	REF. NO.	PART NO.	CODE	DESCRIPTION
1	749-0883		Upper Handle	33	731-1264		Motor Cover
	749-0885		Upper Handle Std.		731-1263		Motor Cover
2	747-0790		Cord Control Rod	34	710-3009		Scr. #10-24 x .75" Lg.
3	725-1590		Strain Relief—Cord	35	710-0605		C-Sunk Scr. 1/4-20 x 1.8" Lg.
4	731-1270		Fan	36	712-0241		Hex Nut 3/8-24 Thd.
5	748-0356		Blade Adapter	37	710-0654A		Hex TT-Tap Scr. 3/8-16 x 1" Lg.
6	738-0102		Axle Bolt	38	710-0191		Hex Bolt 3/8-24 x 1.25" Lg.
7	732-0712		Rear Flap Wire	39	736-0452		Bell-Wash. .396" I.D. x 1.14"
8	731-1261		Rear Flap	40	764-0446		Grass Bag
9	749-0882		Lower Handle		764-0475		Grass Bag w/Logo
10	782-7025		Chute Door	41	720-0241		Plastic Knob
11	732-0677		Door Spring—L.H.	42	734-1699		Wheel Ass'y. Comp.
12	732-0678		Door Spring—R.H.		734-1781		Wheel Ass'y. Comp.
13	714-0104		Hairpin Clip	43	731-1268		Upper Handle Insulator
14	764-0326		Front Catcher Frame	44	731-1267		Lower Handle Insulator
15	738-0507B		Shld. Bolt .5" Dia. x .434"	45	710-0450		Carriage Bolt 5/16-18 x 3" Lg.
16	14765		Pivot Bar—R.H.	47	726-0209		Cable Tie
	14766		Pivot Bar—L.H. (Not Shown)	48	736-0331		Bell-Wash. 3/8" I.D.
17	720-0190		Spring Lever Knob	49	818-60014		Motor, Cord & Switch Ass'y.
18	732-0417A		Spring Lever	50	625-0018A		Cord & Switch Ass'y. Comp.†
19	710-0896		Hex AB-Tap Scr. 1/4-14 x .62" Lg.		725-1565		Rocker Switch Only†
					724-0243		Cord Only†
20	682-0514		Handle Brkt. Ass'y.—R.H.	51	782-5004		Mulching Baffle—R.R.
21	682-0513		Handle Brkt. Ass'y.—L.H.	52	782-5007		Mulching Baffle Plug
22	710-1017		Torx. Mach. AB-Tap Scr. 1/4 x .62" Lg.	53	742-0719		19" Mulching Blade
				54	747-0622		Control Handle
23	782-5026		Rear Baffle	66	720-0226		Foam Grip
24	736-0105		Bell-Wash. .38" I.D. x .88" O.D.	67	720-0258		Hub Cap
25	736-0356		Bell-Wash. .39" I.D. x 1.38" O.D.	68	710-0192		Truss Scr. #10-24 x .38" Lg.
26	712-0798		Hex Nut 3/8-16 Thd.*	69	720-0275		Knob
27	14832		Spring Lever Ass'y. w/Knob	70	624-0031		Brush and Liner Ass'y.†
28	15262B		Pivot Bar	71	724-0200		Brush Holder Cap†
29	15261A		Height Adj. Plate	72	624-0070		End Shield Ass'y. w/Plug (Incl. Ref. 70 & 71)†
30	782-5025		Front Baffle	73	721-0305		Insulator Wire (Output)†
31	782-0054		19" Deck	74	710-0436		Hex Tap Scr. #10-16 x .62" Lg.†
32	14578		Height Adj. Ass'y. Comp.—R.H.	75	741-0875		Needle Bearing†
	14579		Height Adj. Ass'y. Comp.—L.H. (Not Shown)	77	624-0029		Armature Ass'y.†
				78	724-0194		Motor End Plate†
				79	741-0124		Ball Bearing†
				80	748-0348		Bearing Adapter†
				83	710-1176		Carriage Bolt†
				84	712-0324		Hex L-Nut 1/4-20 Thd.†
				86	721-0306		Motor Hsg. Insulator†
				87	782-5016		Brkt.-Rectifier/Heat Sink†
				88	725-1631		Rectifier†
				90	736-3090		FI-Wash. .26" I.D. x .72" O.D.†
				92	721-0311		Insulator Motor Hsg.
				93	731-1388		Insulator—Knob
				94	710-1251		Hex Bolt 3/8-24 x 2.5"
				95	764-0325		Rear Catcher Frame

\*Common Hardware—May be purchased locally.  
 †Part of Motor, Switch & Cord Ass'y. Comp. (Ref. 49)



# Model 707



# Model 707

## PARTS LIST FOR MODEL 707 ROTARY MOWER

REF. NO.	PART NO.	CODE	DESCRIPTION	REF. NO.	PART NO.	CODE	DESCRIPTION
1	749-0886	N	Upper Handle	42	734-1781		Wheel Ass'y. Comp. (8" x 1.75")
2	747-0790		Cord Control Rod		734-1699		Wheel Ass'y. Comp. (7" x 1.5")
3	725-1590		Strain Relief—Cord	43	731-1268		Upper Handle Insulator
4	731-1270		Fan	44	731-1267		Lower Handle Insulator
5	748-0356		Blade Adapter	45	710-0450		Carriage Bolt 5/16-18 x 3" Lg.
6	738-0102		Axle Bolt	46	712-0397		Wing Nut 1/4-20 Thd.
7	17098		Hinge Clip	47	726-0303		Cable Tie
8	731-1028		Rear Flap	48	736-0331		Bell-Wash. 3/8" I.D.
9	749-0885		Lower Handle	49	818-60014		Motor, Cord & Switch Ass'y.
13	714-0104		Hairpin Clip	50	625-0018A		Cord & Switch Ass'y. Comp.
15	738-0507B		Shld. Bolt .5" Dia. x .434"	52	682-7002		Mulching Plug
20	682-3024		Handle Brkt. Ass'y.—R.H.	53	742-0718		18" Blade
21	682-3025		Handle Brkt. Ass'y.—L.H.	54	732-0749		Handle—Switch Actuator
24	736-0105		Bell-Wash. .38" I.D. x .88" O.D.	55	732-0741		Spring—Switch Handle
25	736-0356		Bell-Wash. .39" I.D. x 1.38" O.D.	56	725-1565		Switch
26	712-0798		Hex Nut 3/8-16 Thd.*	57	710-1147		Screw #6-32 x .5" Lg.
27	14832		Spring Lever Ass'y. w/Knob	58	782-5016	N	Heat Sink Bracket
28	15262B		Pivot Bar	59	725-1631	N	Rectifier
29	15261A		Height Adj. Plate	60	725-1712	N	Circuit Breaker
30	782-5018	N	Front Baffle	62	724-0243		Cord Ass'y. (Incl. Ref. #58)
31	682-0018		18" Deck Ass'y.	64	631-0042		Housing—Right Hand
32	14578		Height Adj. Ass'y. Comp.—R.H.	65	731-1209		Housing—Left Hand (Not Shown)
	14579		Height Adj. Ass'y. Comp.—L.H. (Not Shown)	66	720-0226		Foam Grip (Optional)
33	731-1263		Motor Cover	70	721-0311		Insulator
34	710-1128		Scr. #10-16 x .75" Lg.	71	726-0209		Cable Tie
35	710-0605	N	Oval C-Sunk Screw 1/4-20 x 1.81	72	731-1388		Insulator Knob
36	712-0241		Hex Nut 3/8-24 Thd.	73	710-1251		Hex Bolt 3/8-24 x 2.5" Lg.
37	710-1006		Hex L-Wash. TT-Tap Scr. 3/8-16 x .75" Lg.	78	720-0258		Hub Cap (Optional)
38	710-0191		Hex Bolt 3/8-24 x 1.25" Lg.	79	731-1409		Chute Deflector
39	736-0452		Bell-Wash. .396" I.D. x 1.14"	80	736-0270		Bell-Wash. 1/4" I.D.
41	720-0241		Plastic Knob	81	710-0599		Hex Wash. Hd. TT-Tap Scr. 1/4-20 x .5" Lg.

\*For faster service obtain standard nuts, bolts and washers locally. If these items cannot be obtained locally, order by part number and size as shown on parts list.

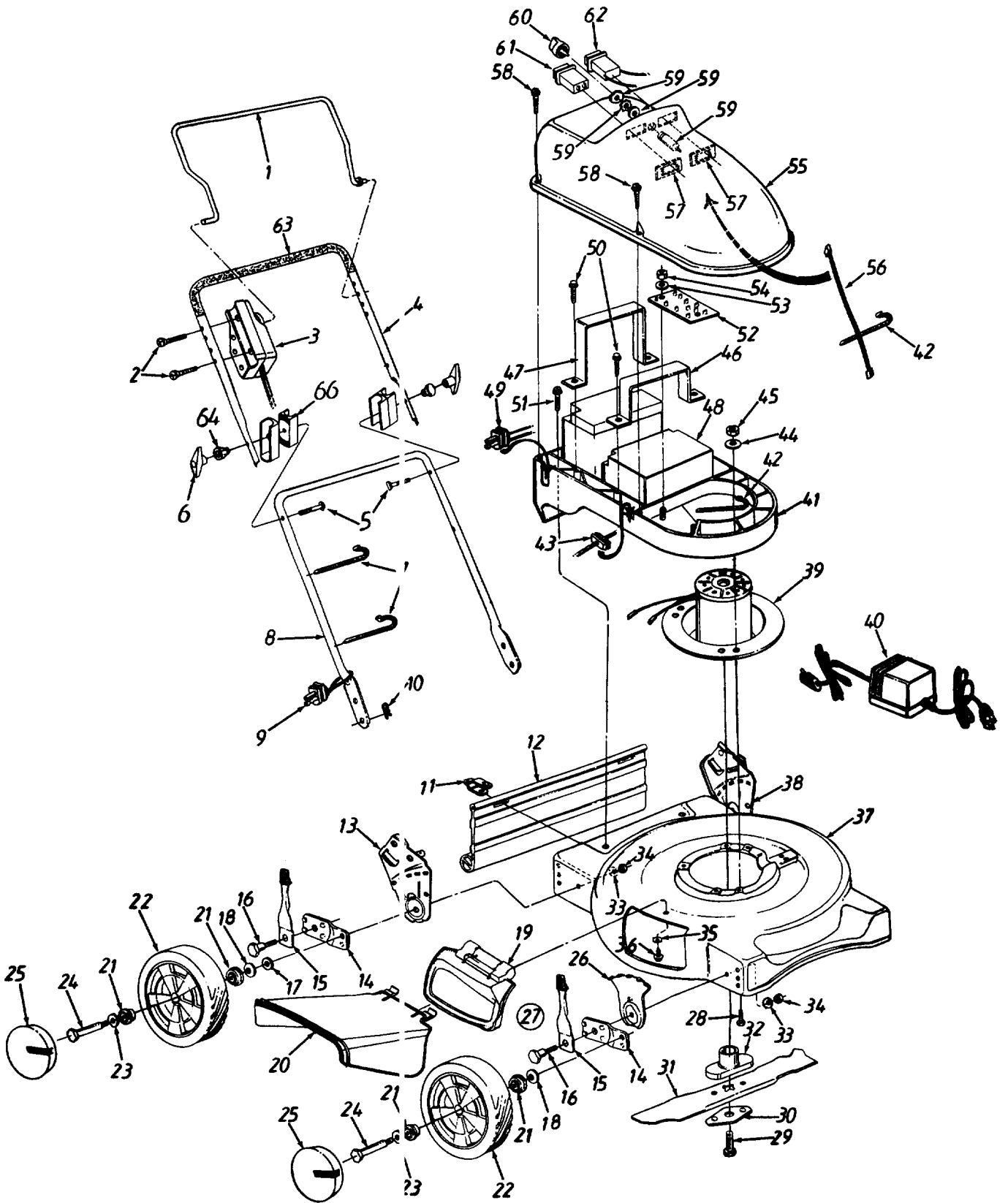


**WARNING: The motor is an important part of the double insulated system. To avoid the possibility of alteration or damage to the system, it is recommended that service be performed at a factory authorized service location.**



**WARNING: Insulators are safety components. It is very important that all parts be reassembled in positions shown.**

# Model 708

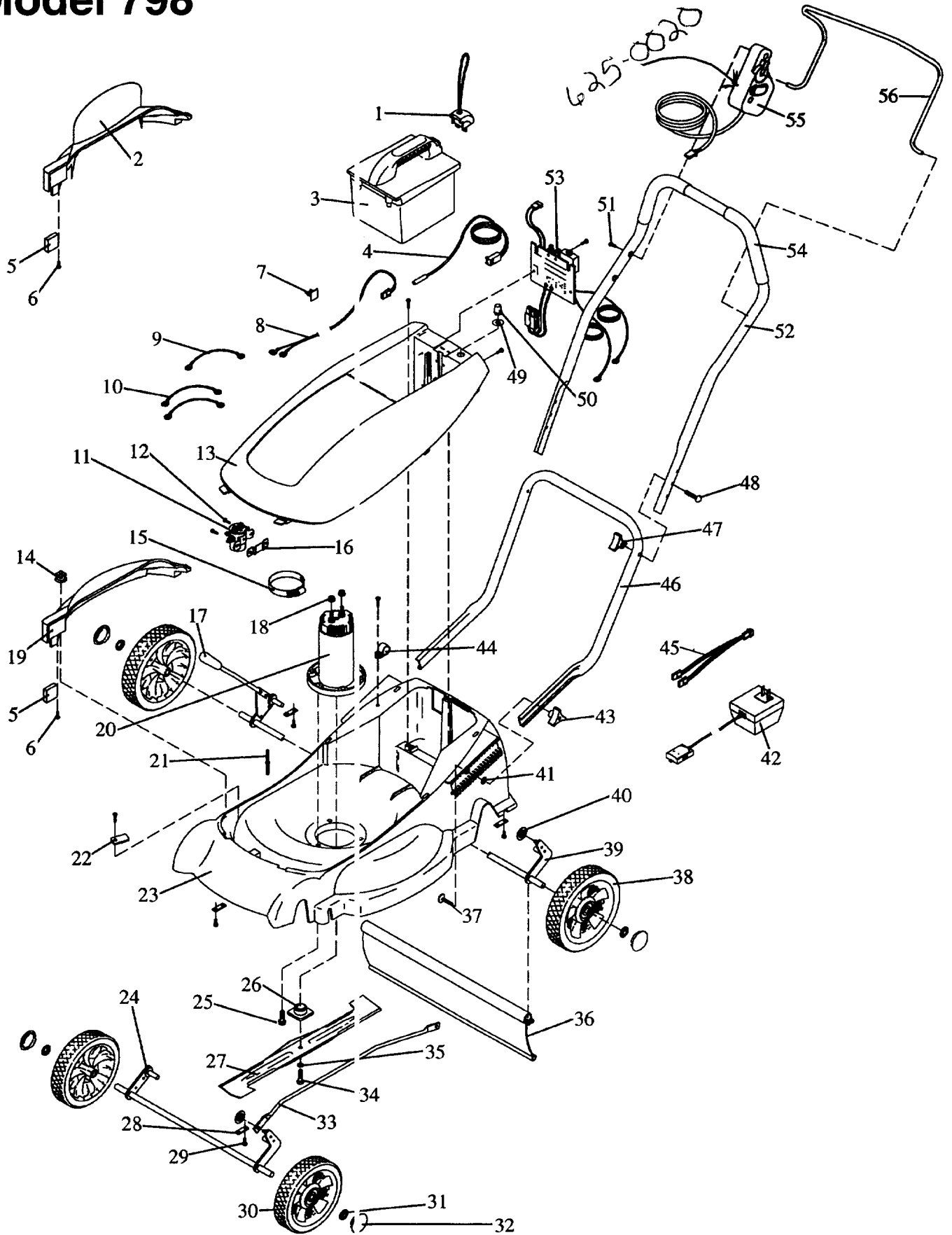


# Model 708

## PARTS LIST FOR MODEL 708 ROTARY MOWER

REF. NO.	PART NO.	CODE	DESCRIPTION	REF. NO.	PART NO.	CODE	DESCRIPTION
1	747-0622	N	Control Handle	33	736-0356		Bell-Wash. .39" I.D. x 1.38" O.D.
2	710-0605		C-Sunk Scr. 1/4-20 x 1.8" Lg.	34	712-0798		Hex Nut 3/8-16 Thd.
3	625-0010	N	Switch Ass'y.	35	736-0270		Bell-Wash. 1/4" I.D.
4	749-0538C		Upper Handle	36	710-0599		Hex Wash. Hd. TT-Tap Scr. 1/4 x .5" Lg.
5	710-1174		Carr. Bolt 5/16-18 x 2" Lg.				Deck Ass'y.
6	720-0276		Handle Knob	37	682-0018		Handle Brkt. Ass'y.—L.H.
7	726-0240		Cable Tie	38	682-3001A		Motor Ass'y.
8	749-0928		Lower Handle	39	624-0033		Charger
9	725-1206		Plug	40	725-1684		Tray Ass'y.
10	714-0104		Hairpin Clip	41	731-1593	N	Cable Tie
11	17098		Hinge Clip	42	726-0317		Harness Ass'y. Switch
12	731-1028		Rear Flap	43	629-0235	N	FI-Wash. .406" I.D.
13	682-3000A		Handle Brkt. Ass'y.—R.H.	44	736-3050		Hex L-Nut 3/8-16 Thd.
14	15262B		Wheel Pivot Bar	45	712-0181		Front Bracket Ass'y.
15	14832		Spring Lever Ass'y. w/Knob	46	682-9016	N	Rear Bracket Ass'y.
16	738-0507B		Shld. Bolt .5" Dia. x .43" Lg.	47	682-9017	N	Battery Ass'y.
17	736-0258		FI-Wash. .385" I.D. x 1" O.D.	48	625-0017	N	Charger Plug
18	736-0105		Bell-Wash. .38" I.D. x .88" O.D.	49	629-0251	N	Hex Hd. Hi-Lo Scr. 1/4 x .75" Lg.
19	682-7002		Mulching Plug Ass'y.	50	710-0895		Hex Wash. Hd. TT-Tap Scr. 1/4-20 x 1" Lg.
20	731-1409		Chute Deflector	51	710-0788		Circuit Board
21	741-0484		Ball Bearing				FI-Wash. .21" I.D. x .56" O.D.
22	734-1513B		Wheel Ass'y.	52	725-1689	N	Palnut Self-Threading
23	736-0504		Wave Wash. .51" I.D. x .75" O.D.	53	736-0534		Motor Cover
24	738-0213		Shld. Bolt .498" Dia. x 1.45	54	712-3060		Key Switch Harness Ass'y.
25	720-0249		Hub Cap	55	731-1594		Mounting Clamp
26	15261A		Height Adj. Plate	56	629-0249		Hex AB-Tap Scr. #10 x .75" Lg.
27	14578		Height Adj. Ass'y. Comp.—R.F.	57	725-1687		Key Switch
	14579		Height Adj. Ass'y. Comp.—L.F. (Not Shown)	58	710-0589		Key
28	710-0654A		Hex Wash. Self-Tap Scr. 3/8-16 x 1" Lg.	59	725-1676		Meter
				60	725-1341B		Meter
29	710-1251		Hex Bolt 3/8-24 x 2.5" Lg.	61	725-1685		Foam Grip (Optional)
30	736-0524		Blade Bell Support	62	725-1686		Insulator Knob
31	742-0743	N	18" Blade	63	720-0226		Lower Handle Insulator
32	748-0380		Blade Adapter	64	731-1388		
				66	731-1267		

# Model 798





# Model 798

## PARTS LIST FOR MODEL 798 ROTARY MOWER

REF. NO.	PART NO.	DESCRIPTION	REF. NO.	PART NO.	DESCRIPTION
1	497399	Key Assembly	29	751B94969	Screw
2	751B281488	Discharge Chute	30	751B497386	Front Wheel
3	497395	Battery Pack Assembly	31	751B94933	Wheel Retainer
4	751B497496	Interlock Switch Assembly	32	751B281500	Hubcap
5	751B211884	Magnet	33	751B263068	Height Adjustor Link
6	751B94969	Screw	34	751B94932	Blade Mounting Bolt
7	751B281532	Cord Clip	35	751B90366	Washer, Split Ring
8	497875	Circuit Board Wire Assembly	36	751B281492	Drag Shield
9	497873	Solenoid Wire Assembly	37	751B263067	Lower Handlebar Bolt
10	497888	Solenoid Wire Assembly	38	751B497387	Rear Wheel
11	497878	Solenoid	39	751B497385	Height Adjustor, Rear
12	805448	Solenoid Screw	40	751B94972	Link Retainer
13	751B281486	Mower Cover	41	751B94936	Bolt Retainer
14	751B281051	Knob	42	497400	Charger
15	393514	Solenoid Clamp	43	751B281495	Handlebar Knob
16	222934	Solenoid Bracket	44	751B281559	Wire Clamp
17	751B281512	Height Adjustor Handle	45	497435	Harness, Battery Charger
18	94949	Motor Nut	46	751B263071	Lower Handlebar
19	751B281487	Mulching Cover	47	751B281495	Handlebar Knob
20	497383	Motor	48	751B94937	Handlebar Bolt
21	751B263064	Chute Stud	49	273147	Circuit Breaker Label
22	751B68848	Interlock Retainer	50	281530	Circuit Breaker Boot
23	751B281485	Mower Deck	51	751B95030	Handbar Screw
24	751B497384	Height Adjustor, Front	52	751B263143	Upper Handlebar
25	751B94939	Bolt, Motor	53	497627	Motor Control <b>CONTROL MODULE</b>
26	751B263059	Blade Adaptor	54	751B281497	Foam Grip
27	751B225145	Blade	55	<del>751B498420</del>	<del>Deadman Control Assembly</del>
28	751B225151	Axle Retainer	56	751B498199	Wire, Bail Assembly





