
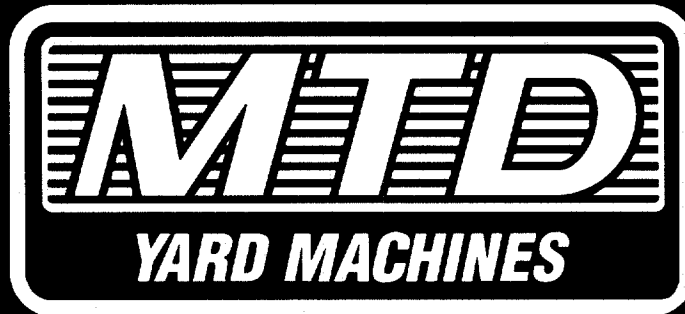


# ILLUSTRATED PARTS

AMERICAN  AMERICAN  
M A D E O W N E D  
OUTDOOR POWER EQUIPMENT



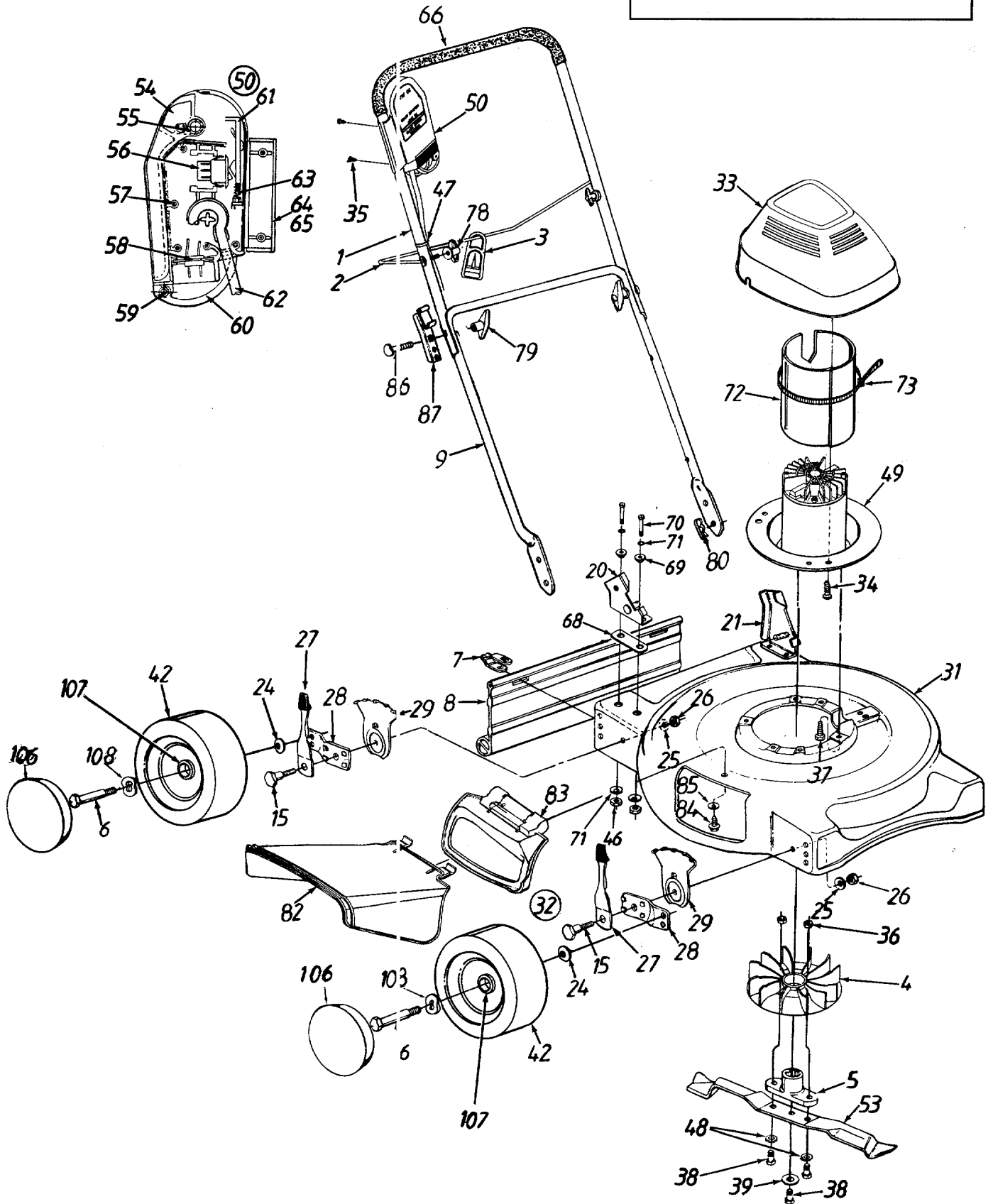
1994

## ELECTRIC PUSH MOWERS

Model Number	Pages
184-107-000 .....	2, 3
184-387-000 .....	4, 5
184-427-000 .....	6, 7

# Model 107

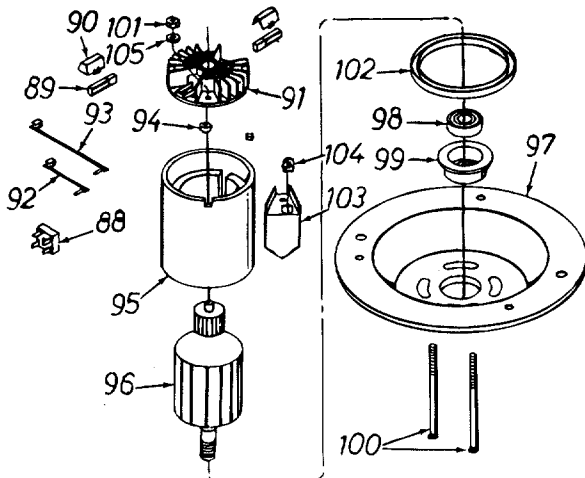
Optional Grass Catcher Complete  
190-106-000



# Model 107

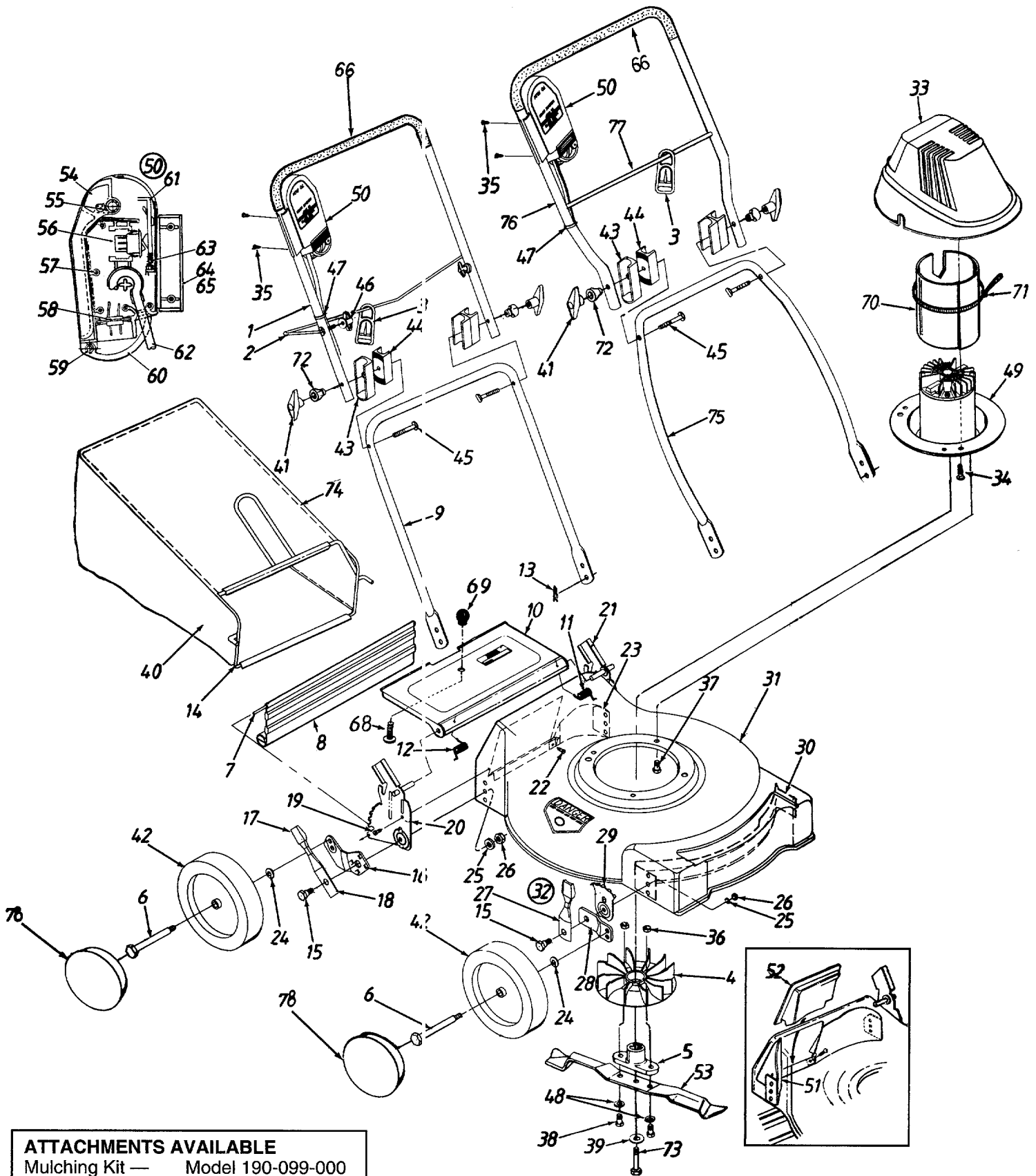
## PARTS LIST FOR MODEL 107 ELECTRIC MOWER

REF. NO.	PART NO.	CODE	DESCRIPTION	REF. NO.	PART NO.	CODE	DESCRIPTION
1	749-0884		Upper Handle	49	818-60013		Motor, Cord & Switch Ass'y.
2	747-0790		Cord Control Rod	50	624-0032		Cord & Switch Ass'y. Comp. (See Breakdown)
3	725-1590		Strain Relief—Cord	53	742-0720		20" Mulching Blade
4	731-1270		Fan	54	731-1210		Handle—Switch Actuator
5	748-0356		Blade Adapter	55	732-0679		Spring—Switch Handle
6	738-0102		Axle Bolt	56	725-1565		Switch
7	17098		Hinge Clip	57	710-1147		Screw #6-32 x .5" Lg.
8	731-1447		Rear Flap	58	729-0304		Plug Ass'y.
9	749-0928		Lower Handle	59	732-0680		Retainer Plug Spring
15	738-0507B		Shld. Bolt .5" Dia. x .434"	60	731-1211		Retainer Plug
20	682-3012A		Handle Brkt. Ass'y.—R.H.	61	731-1198		Latch
21	682-3011A		Handle Brkt. Ass'y.—L.H.	62	624-0053		Cord Ass'y. (Incl. Ref. #58)
22	710-1017		Torx. Mach. AB-Tap Scr. 1/4 x .62" Lg.	63	732-0681		Spring Latch
24	736-0105		Bell-Wash. .38" I.D. x .88" O.D.	64	731-1208		Housing—Upper Half
25	736-0356		Bell-Wash. .39" I.D. x 1.38" O.D.	65	731-1209		Housing—Lower Half (Not Shown)
26	712-0798		Hex Nut 3/8-16 Thd.*	66	720-0226		Foam Grip (Optional)
27	14832		Spring Lever Ass'y. w/Knob	68	721-0309		Insulator Strip
28	15262B		Pivot Bar	69	731-1219		Insulator Shield
29	15261A		Height Adj. Plate	70	710-0597		Hex Bolt 1/4-20 x 1" Lg.*
31	682-0016		20" Deck Ass'y.	71	736-3090		Fl-Wash. .26" I.D. x .72" O.D.
32	14578		Height Adj. Ass'y. Comp.—R.F. & L.R.	72	721-0311		Insulator
	14579		Height Adj. Ass'y. Comp.—L.F. & R.R. (Not Shown)	73	726-0209		Cable Tie
33	731-1269		Motor Cover (Yellow)	77	710-1251		Hex Bolt 3/8-24 x 2.5" Lg.
	731-1264		Motor Cover (Red)	78	720-0279		Wing Nut
34	710-1128		Scr. #10-16 x .75" Lg.	79	720-0241		Wing Nut Ass'y.
35	710-1150		Self-Tap Scr. #7 x 1" Lg.	80	714-0104		Hairpin Clip
36	712-0241		Hex Nut 3/8-24 Thd.	82	731-1407		Chute Deflector
37	710-1006		Hex L-Wash. TT-Tap Scr. 3/8-16 x .75" Lg.	83	682-7000		Mulching Plug Ass'y.
38	710-0191		Hex Bolt 3/8-24 x 1.25" Lg.	84	710-0599		Hex Wash. Hd. TT-Tap Scr. 1/4-20 x .5" Lg.
39	736-0452		Bell-Wash. .396" I.D. x 1.14" O.D.	85	736-0270		Bell-Wash. 1/4" I.D.
42	734-1781		Wheel Ass'y. Comp. (Gray Rim)	86	710-1174		Carr. Bolt 5/16-18 x 2" Lg.
	73???790		Wheel Ass'y. Comp. (Yellow Rim)	87	782-7007		Handle Bracket
46	712-0324		Hex Top L-Nut 1/4-20 Thd.	88	725-1602		Rectifier†
47	726-0240		Cable Tie	89	624-0031		Brush and Liner Ass'y.†
48	736-0169		L-Wash. 3/8" I.D.*	90	724-0200		Brush Holder Cap†
				91	724-0201		End Shield Brushes†
				92	729-0328		Red Brush Lead†
				93	729-0329		Blue Brush Lead†
				94	741-0875		Needle Bearing†
				95	624-0028		Housing Magnet Ass'y.†
				96	624-0029		Armature Ass'y.†
				97	724-0194		Motor End Plate†
				98	741-0124		Ball Bearing†
				99	748-0348		Bearing Adapter†
				100	710-1176		Carriage Bolt†
				101	712-0324		Hex L-Nut 1/4-20 Thd.†
				102	721-0306		Motor Hsg. Insulator†
				103	724-0202		Cover—Rectifier†
				104	731-1207		Strain Relief Bushing†
				105	736-3090		Fl-Wash. .26" I.D. x .72" O.D.†
				106	731-1426		Hub Cap (Optional)
				107	741-0484		Ball Bearing (Used w/734-1790 Wheel)
				108	736-0504		Wave Wash. (Used w/Ref. 107)



†Part of Motor, Switch & Cord Ass'y. Comp. (Ref. 49)

# Model 387



**ATTACHMENTS AVAILABLE**  
 Mulching Kit — Model 190-099-000  
 Chute Deflector — Model 190-104-000

# Model 387

## PARTS LIST FOR MODEL 387 ROTARY MOWER

REF. NO.	PART NO.	CODE	DESCRIPTION	REF. NO.	PART NO.	CODE	DESCRIPTION
1	749-0883		Upper Handle	38	710-0191		Hex Bolt 3/8-24 x 1.25" Lg.
2	747-0790		Cord Control Rod	39	736-0452		Bell-Wash. .396" I.D. x 1.14"
3	725-1590		Strain Relief—Cord	40	764-0446		Grass Bag
4	731-1270		Fan	41	720-0241		Plastic Knob
5	748-0356		Blade Adapter	42	734-1781		Wheel Ass'y. Comp. (8" x 1.75")
6	738-0102		Axle Bolt		734-1699		Wheel Ass'y. Comp. (7" x 1.5")
7	732-0712		Rear Flap Wire	43	731-1268		Upper Handle Insulator
8	731-1261		Rear Flap	44	731-1267		Lower Handle Insulator
9	749-0885		Lower Handle	45	710-0450		Carriage Bolt 5/16-18 x 3" Lg.
10	782-7025		Chute Door	46	712-0397		Wing Nut 1/4-20 Thd.
11	732-0677		Door Spring—L.H.	47	726-0303		Cable Tie
12	732-0678		Door Spring—R.H.	48	736-0331		Bell-Wash. 3/8" I.D.
13	714-0104		Hairpin Clip	49	818-60013		Motor, Cord & Switch Ass'y.
14	764-0326		Front Catcher Frame	50	624-0032		Cord & Switch Ass'y. Comp.
15	738-0507B		Shld. Bolt .5" Dia. x .434"	51	782-5004		Mulching Baffle—R.R. (Optional)
16	14765		Pivot Bar—R.H.	52	782-5007		Mulching Baffle Plug (Optional)
	14766		Pivot Bar—L.H. (Not Shown)	53	742-0619		19" Blade
17	720-0190		Spring Lever Knob		742-0719		19" Mulching Blade (Optional)
18	732-0417A		Spring Lever	54	731-1210		Handle—Switch Actuator
19	710-0892		Hex L-Wash. Hd. AB-Tap Scr. 1/4 x .62" Lg.	55	732-0679		Spring—Switch Handle
20	682-0514		Handle Brkt. Ass'y.—R.H.	56	725-1565		Switch
21	682-0513		Handle Brkt. Ass'y.—L.H.	57	710-1147		Screw #6-32 x .5" Lg.
22	710-1017		Torx. Mach. AB-Tap Scr. 1/4 x .62" Lg.	58	729-0304		Plug Ass'y.
23	782-5026		Rear Baffle	59	732-0680		Retainer Plug Spring
24	736-0105		Bell-Wash. .38" I.D. x .88" O.D.	60	731-1211		Retainer Plug
25	736-0356		Bell-Wash. .39" I.D. x 1.38" O.D.	61	731-1198		Latch
26	712-0798		Hex Nut 3/8-16 Thd.*	62	624-0053		Cord Ass'y. (Incl. Ref. #58)
27	14832		Spring Lever Ass'y. w/Knob	63	732-0681		Spring Latch
28	15262B		Pivot Bar	64	731-1208		Housing—Upper Half
29	15261A		Height Adj. Plate	65	731-1209		Housing—Lower Half (Not Shown)
30	782-5025		Front Baffle	66	720-0226		Foam Grip (Optional)
31	782-0054		19" Deck	68	710-0192		Truss Scr. #10-24 x .38" Lg.
32	14578		Height Adj. Ass'y. Comp.—R.H.	69	720-0275		Knob
	14579		Height Adj. Ass'y. Comp.—L.H. (Not Shown)	70	721-0311		Insulator
33	731-1263		Motor Cover	71	726-0209		Cable Tie
	731-1264		Motor Cover (Sears)	72	731-1388		Insulator Knob
34	710-1128		Scr. #10-16 x .75" Lg.	73	710-1251		Hex Bolt 3/8-24 x 2.5" Lg.
35	710-1150		Self-Tap. Scr. #7 x 1" Lg.	74	764-0325		Rear Catcher Frame
36	712-0241		Hex Nut 3/8-24 Thd.	75	749-0882		Lower Handle
37	710-1006		Hex L-Wash. TT-Tap Scr. 3/8-16 x .75" Lg.	76	749-0881		Upper Handle
				77	747-0825		Cord Control Rod
				78	†		Hub Cap (See Chart)

\*For faster service obtain standard nuts, bolts and washers locally. If these items cannot be obtained locally, order by part number and size as shown on parts list.

### †Optional Hub Caps

Description	Part No.
Gray (3-1/2" Dia.)	720-0249
Gray (5-1/2" Dia.)	731-0981A
Beige (5-1/2" Dia.)	731-0982A
Black (1-7/8" Dia.)	720-0258



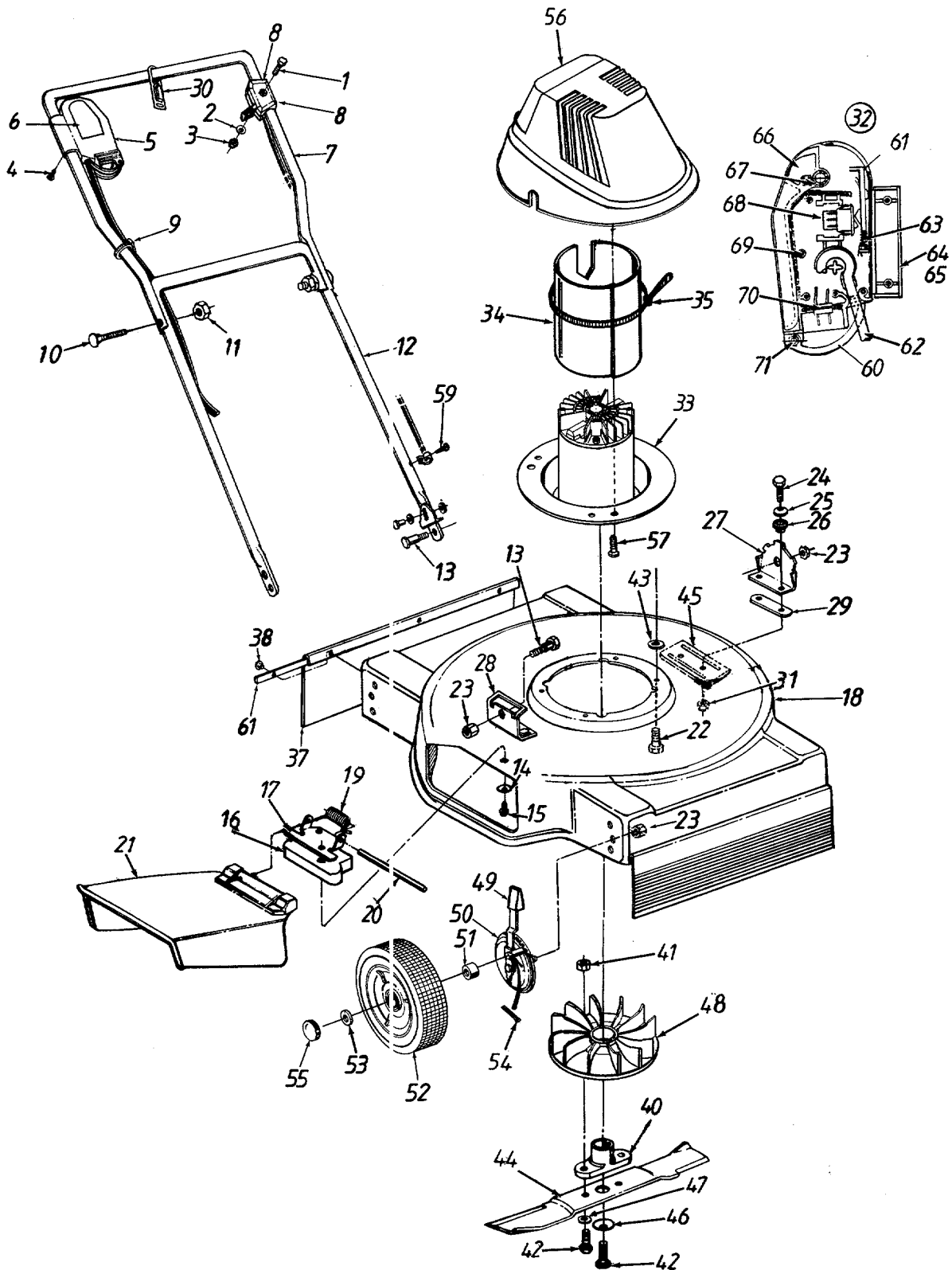
**WARNING:** The motor is an important part of the double insulated system. To avoid the possibility of alteration or damage to the system, it is recommended that service be performed at a factory authorized service location.



**WARNING:** Insulators are safety components. It is very important that all parts be reassembled in positions shown.

# Model 427

**⚠ WARNING:** Insulators are safety components. It is very important that all parts be reassembled in positions shown.



# Model 427

## PARTS LIST FOR MODEL 427 ELECTRIC MOWER

REF. NO.	PART NO.	CODE	DESCRIPTION	REF. NO.	PART NO.	CODE	DESCRIPTION
1	710-0606		Hex Bolt 1/4-20 x 1.5" Lg.*	37	720-0248		Flap—Rear & Front
2	736-0142		Fl-Wash. .281" I.D. x .5" O.D.	38	728-0143		Pop Rivet .188" Dia.
3	712-0442		Acorn Nut 1/4-20 Thd.	40	748-0343		Blade Adapter
4	710-1150		Self-Tap Scr. #7 x 1" Lg.	41	712-0241		Hex Nut 3/8-24 Thd.
6	777-9380		Label—Switch Box	42	710-0191		Hex Bolt 3/8-24 x 1.25" Lg.
7	749-0900		Upper Handle	43	731-1175		Spacer
8	720-0250		Control Flip Knob	44	742-0519		19" Blade
9	726-0303		Cable Tie	45	782-5001		Deck Reinforcement Plate
10	710-0671		Curved Hd. Bolt 5/16-18 x 7/8" Lg.	46	736-0452		Bell-Wash. .4" I.D. x 1.14" O.D.
				47	736-0331		Bell-Wash. 3/8" I.D.
11	712-0437		Hex L-Nut 5/16-18 Thd.	48	731-1250		Motor Fan
12	649-2220		Lower Handle	49	720-0239		Knob
13	738-0859		Shld. Bolt 3/8-16 Thd.	50	682-0009		Height Adj. Ass'y. (RF/LR)
14	736-0270		Bell-Wash. 1/4" I.D.		682-0010		Height Adj. Ass'y. (LF/RR)
15	710-1108		Self-Tap Scr. 1/4-20 x 1.12" Lg.	51	750-0796		Plastic Wheel Spacer
16	731-1266		Spacer	52	734-1797		7" Wheel
17	17032		Adapter Plate	53	736-3068		Fl-Wash. .531" I.D. x .875" O.D.
18	682-0105		19" Deck Ass'y.	54	714-0507		Cotter Pin 3/32" Dia. x .75" Lg.
19	732-0593		Spring	55	731-0251		Hub Cap
20	747-0710		Hinge Pin	56	731-1263		Motor Cover
21	731-1034		Chute Deflector Ass'y. (Incl. Ref. 17, 19, 20)	57	710-1128		Screw #10 x .75" Lg.
				59	710-1167		Self-Tap AB-Tap Scr. #10-16 x .5" Lg.
22	710-0654A		Hex Self-Tap Scr. 3/8-16 x .75" Lg.	60	731-1211		Retainer Plug
				61	731-1198		Latch
23	712-0438		Hex Sems Nut 3/8-16 Thd.	62	624-0053		Cord Ass'y. (Incl. Ref. #70)
24	710-0597		Hex Bolt 1/4-20 x 1" Lg.	63	732-0681		Spring Latch
25	736-3090		Fl-Wash. .26" I.D. x .72" O.D.	64	731-1208		Housing—Upper Half
26	731-1219		Insulator Shield	65	731-1209		Housing—Lower Half (Not Shown)
27	782-3013		Handle Brkt.—L.H.	66	731-1210		Handle—Switch Actuator
28	782-3012		Handle Brkt.—R.H.	67	732-0679		Spring—Switch Handle
29	721-0278		Insulator Strap	68	725-1565		Switch
30	725-1590		Cord Restraint	69	710-1147		Screw #6-32 x .5" Lg.
31	712-0324		Hex Nylon Lock Nut 1/4-20 Thd.	70	729-0304		Plug Ass'y.
32	624-0032		Cord & Switch Ass'y. Comp.	71	732-0680		Retainer Plug Spring
33	818-60013		Motor & Switch Ass'y. Comp.	72	710-1251		Hex Bolt 3/8-24 x 2.5" Lg.
34	721-0311		Insulator Motor Hsg.				
35	726-0209		Cable Tie				

\*For faster service obtain standard nuts, bolts and washers locally. If these items cannot be obtained locally, order by part number and size as shown on parts list.



**WARNING: The motor is an important part of the double insulated system. To avoid the possibility of alteration or damage to the system, it is recommended that service be performed at a factory authorized service location.**