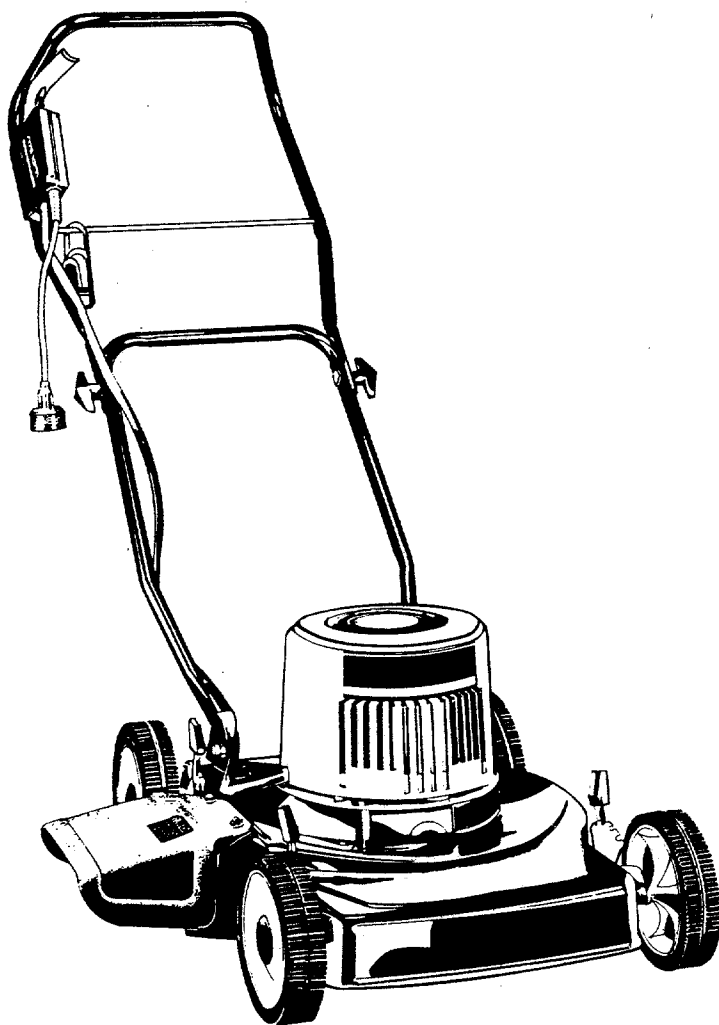


\$1.00

OWNER'S GUIDE

ASSEMBLY • OPERATION • MAINTENANCE • PARTS



**16"
ELECTRIC
ROTARY
MOWER**

**Model Number
181-014J000
(4016)**



**IMPORTANT:
Read Safety Rules and Instructions Carefully**

SAFETY RULES

CAUTION: ALWAYS DISCONNECT POWER SUPPLY TO PREVENT ACCIDENTAL STARTING WHEN SETTING-UP, TRANSPORTING, ADJUSTING OR MAKING REPAIRS TO YOUR MOWER.

IMPORTANT

FEDERAL REGULATIONS REQUIRE OPERATOR PRESENCE BLADE STOP CONTROLS TO MINIMIZE THE RISK OF CONTACT INJURY. YOUR MOWER IS EQUIPPED WITH SUCH CONTROLS. DO NOT ATTEMPT TO DEFEAT THE FUNCTION OF THE OPERATOR PRESENCE CONTROL UNDER ANY CIRCUMSTANCES.

TRAINING:

- Read the Operation and Service Instruction Manual carefully. Be thoroughly familiar with the controls and proper use of the equipment. Know how to stop the unit and disengage the controls quickly.
- Never allow children to operate equipment. Never allow adults to operate equipment without proper instruction.
- Keep the area of operation clear of all persons, especially small children and pets.
- Use the mower only as the Manufacturer intended and as described in the Operator's Manual.
- Store idle mower indoors - When not in use, mower should be stored indoors in dry, high or locked-up place - Out of reach of children.
- Do not operate mower after it has been dropped or damaged in any manner. Always have damage repaired before using the mower.
- The use of accessory attachments not recommended by the mower manufacturer may cause hazards.

PREPARATION:

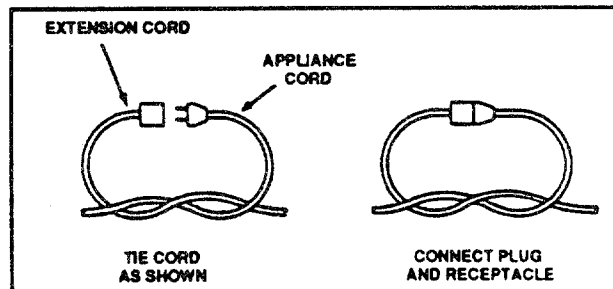
- Objects struck by the lawn mower blade can cause severe injuries to persons. The lawn should always be carefully examined and cleared of all stones, sticks, wires, bones and other foreign objects.
- Dress properly - Wear only solid shoes when mowing. Do not operate mower when barefoot, or wearing open sandals. Do not wear loose clothing or jewelry. They can be caught in moving parts. Use of rubber gloves and substantial footwear is recommended when working outdoors.
- Never attempt to make a wheel height adjustment while the motor is running.
- Mow only in daylight or in good artificial light
- Do not operate mower in damp or wet locations. Always be sure of your footing; keep a firm hold on the handle and walk; never run.
- Do not use in rain.
- Don't force product - it will do the job better and safer at the rate for which it was designed.
- Don't abuse cord - never pull product by cord or yank it to disconnect from receptacle. Keep cord from heat, oil and sharp edges.
- Warning - to prevent shock hazard use only with an extension cord suitable for outdoor use.
- Avoid accidental starting - don't pull plugged-in product with finger on switch. Be sure switch is off when plugging in.

EXTENSION CORDS:

- Use only UL approved outdoor extension cords of adequate gauge (min. 16 gauge recommended) which accept the appliance's plug. Replace or repair damaged cords. Extension cords are available at your nearest authorized Service Center or Dealer.
- Cord sets - Make sure your cord set is in good condition. When using a cord set, be sure to use one heavy enough to carry the current your lawn mower will draw. For lengths less than 50 feet, No. 16 AWG cord set should be used. An undersized cord will cause a drop in line voltage resulting in loss of power and overheating. (NOTE: Table below shows the correct size to use depending on cord length and nameplate ampere rating. If in doubt, use the next heavier gauge. The smaller the gauge number the heavier the cord.)

Required Cord Gauge				
Motor Amp Rating	Cord Length in Feet			
	25	50	100	150
	Wire Gauge			
10-12	16	16	14	12

- If extension cord is damaged in any manner while plugged in, pull extension cord from wall receptacle.
- To prevent disconnection of unit from extension cord during operation, use the strain relief connector described in this manual, or make knot as shown in illustration, or use one of the plug receptacle retaining straps or connectors available at most hardware stores.



POWER SUPPLY:

- Fuses - The motor should be operated on a 15 AMP circuit. If difficulty in starting is experienced with standard 15 AMP fuse or circuit breaker, contact your nearest authorized Services Center or Dealer.
- Frequent blowing of fuses - DO NOT use a higher rated fuse without consulting your power company.

DOUBLE INSULATED LAWN MOWER

DOUBLE INSULATION IS A CONCEPT IN SAFETY, IN ELECTRIC LAWN MOWERS, WHICH ELIMINATES THE NEED FOR THE USUAL THREE WIRE GROUNDED POWER CORD AND GROUNDED SUPPLY SYSTEM. WHEREVER THERE IS ELECTRIC CURRENT IN THE MOWER THERE ARE TWO COMPLETE SETS OF INSULATION TO PROTECT THE USER. ALL EXPOSED METAL PARTS ARE ISOLATED FROM THE INTERNAL METAL MOTOR COMPONENTS WITH PROTECTING INSULATION.

IMPORTANT SERVICING OF A LAWN MOWER WITH DOUBLE INSULATION REQUIRES EXTREME CARE AND KNOWLEDGE OF THE SYSTEM AND SHOULD BE PERFORMED ONLY BY A QUALIFIED SERVICE TECHNICIAN. FOR SERVICE WE SUGGEST YOU RETURN THE LAWN MOWER TO YOUR NEAREST AUTHORIZED SERVICE CENTER FOR REPAIR. ALWAYS USE ORIGINAL FACTORY REPLACEMENT PARTS WHEN SERVICING.

OPERATION:

- Do not put hands or feet near or under rotating parts.
- Keep clear of the discharge opening at all times.
- Stop the motor whenever you leave the mower, before crossing drives, walks or roads.
- After striking a foreign object, shut off the motor, make absolutely sure the blade and all moving parts have completely stopped, disconnect the power cord to prevent accidental starting, then thoroughly inspect the mower for any damage. Such damage must be repaired before restarting and operating the mower. Remember, heavy vibration is generally a sign of trouble.
- If mower should start to vibrate abnormally, stop the motor and check immediately for the cause.
- Stop the motor, wait for blade and all moving parts to stop, before cleaning, unclogging chute, removing grass catcher, repairing or inspecting the mower. Always disconnect power cord to prevent accidental starting.
- Never operate the mower without proper guards, plates, or other safety protective devices in place.
- Never cut grass by pulling the mower towards you. Mow grass across the face of slopes, never up and down. Do not mow excessively steep slopes. Use caution when operating the mower on uneven terrain or changing direction; maintain good footing.

MAINTENANCE AND STORAGE:

- Maintain Lawn Mower With Care - Keep cutting edges sharp and clean for best and safest performance.
- Check the blade and the motor mounting bolts at frequent intervals for proper tightness.
- Check all bolts, nuts and screws, etc. at frequent intervals for proper tightness to be sure equipment is in safe working condition.
- To reduce fire hazard, keep the motor free of grass, leaves, or excessive grease.
- Check grass catcher bags frequently for deterioration and wear and replace worn bags. Check that replacement bags comply with original manufacturer's recommendations or specifications.
- Allow motor to cool before storing in any enclosure.
- Use identical replacement blades only.



LOOK FOR THIS SYMBOL TO POINT OUT IMPORTANT SAFETY PRECAUTIONS. IT MEANS- ATTENTION!!! BECOME ALERT!!! YOUR SAFETY IS INVOLVED.

CONGRATULATIONS on your purchase of a Aircap Lawn Mower. It has been designed, engineered and manufactured to give you the best possible dependability and performance.

Should you experience any problem you cannot easily remedy, please contact your nearest authorized Service Center or Dealer. We have competent, well-trained technicians and the proper tools to service or repair this unit.

Please read and retain this manual. The instructions will enable you to assemble and maintain your mower properly. Always observe the "SAFETY RULES".

MODEL
NUMBER 4016

SERIAL
NUMBER _____

DATE OF
PURCHASE _____

THE MODEL AND SERIAL NUMBERS WILL BE FOUND ON A DECAL ATTACHED TO THE REAR OF THE MOWER HOUSING.

YOU SHOULD RECORD BOTH SERIAL NUMBER AND DATE OF PURCHASE AND KEEP IN A SAFE PLACE FOR FUTURE REFERENCE.

PRODUCT SPECIFICATIONS

VOLTAGE:	110 - 120 AC
AMPERAGE:	12
Hz:	60
BLADE NUT TORQUE:	30-35 ft. lbs.

CUSTOMER RESPONSIBILITIES

- Read and observe the safety rules.
- Follow a regular schedule in maintaining, caring for and using your mower.
- Follow the instructions under "Maintenance" and "Storage" sections of this Owner's Manual.

AIRCAP INDUSTRIES CORP.

For one (1) year from the date of original retail purchase, Aircap Industries Corp. will either repair or replace, free of charge, F.O.B. factory or authorized service firm, any part or parts found to be defective in material or workmanship. Transportation charges for the movement of any power equipment unit or attachment are the responsibility of the purchaser. Transportation charges for any parts submitted for replacement under this warranty must be paid by the purchaser unless such return is requested by Aircap Industries Corp.

This warranty will not apply to any part which has become inoperative due to misuse, excessive use, accident, neglect, improper maintenance, alterations, or if the unit has not been operated and maintained in accordance with the instructions furnished. All engines, as well as batteries, battery chargers, or other component parts thereof are excluded from this warranty. Please refer to the applicable manufacturer's warranty on these items.

This warranty will not apply where the unit has been used commercially.

Warranty service, parts and repair service information is available through your local authorized service dealer or distributor.

The return of a complete unit will not be accepted by the factory unless prior written permission has been extended by Aircap Industries Corp.

This warranty gives you specific legal rights. You may also have other rights which vary from state to state.

TABLE OF CONTENTS

SAFETY RULES	2,3
PRODUCT SPECIFICATIONS	4
CUSTOMER RESPONSIBILITIES	4
WARRANTY	4
TABLE OF CONTENTS	5
INDEX	5
ASSEMBLY	7

OPERATION	8,9,10
MAINTENANCE	10,11
STORAGE	11
SERVICE AND ADJUSTMENTS	11
SERVICE RECOMMENDATIONS	12
TROUBLE SHOOTING	13
REPAIR PARTS - MOWER	14,17
PARTS ORDERING/SERVICE	BACK PAGE

INDEX

A	
Adjustments:	
Handle Height	7
Height of Cut	9
Wheel Adjusters	9
Assembly:	
Handle	7
Safety Chute Guard	7

B	
Blade:	
Replacement	10
Sharpening	10,11

C	
Chute Guard Assembly	7
Cleaning	11
Controls:	
Motor Control	9
Operator Presence Control Switch ...	9
Cord Connection	9
Cord Winding Tip	11
Customer Responsibilities	4
Cutting Heights	9

E	
Extension Cord	2,11

G	
Grounding Lawn Mower	3
H	
Handle:	
Adjust Height	7
Assembly	7
Hardware Pack Contents	6

L	
Lubrication:	
Motor	12
Wheels	12

M	
Maintenance:	
Blade Care/Replacement	10,11
Cleaning	11
Lubrication	12
Motor:	
Control	9
Starting and Stopping	9
Storage	11
Mowing Tips	10

O	
Operating Mower	8,9,10
Operator Presence Control	9

P	
Polarized Plug	9
Power Supply	2
R	
Repair/Replacement Parts	14-17
Responsibilities, Customer	4

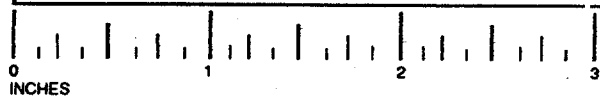
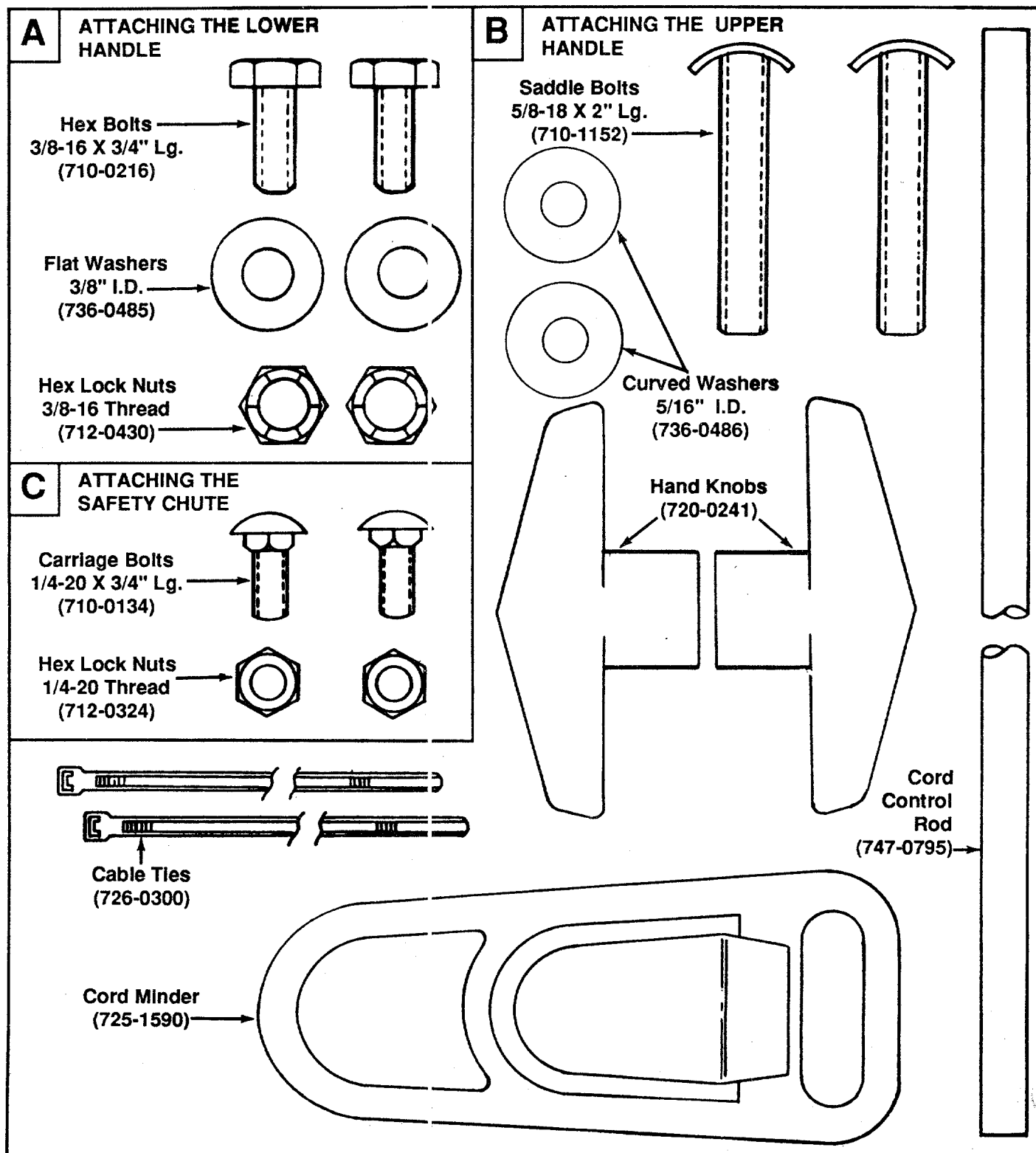
S	
Safety Rules	2,3
Service and Adjustments:	
Blade	10
Cutting Height	9
Handle Height	7
Rear Trail Shield	11
Service Recommendations	12
Specifications	4
Starting the Motor	9
Stopping the Motor	9
Storage	11

T	
Table of Contents	5
Trouble Shooting Chart	13

W	
Warranty	4
Wheels:	
Adjusting Height	9
Lubrication	12

CONTENTS OF HARDWARE PACK

Lay out the hardware according to the illustration for identification purposes. (Hardware pack may contain extra items which are not used on your unit -- Part numbers are shown in parentheses.)



ASSEMBLY

Your lawn mower has been completely assembled at the factory except for the handles and safety chute guard.

TO REMOVE MOWER FROM CARTON

- Remove loose parts if included with mower, (i.e. handles, chute guard, hardware pack, etc.).
- Cut down corners on one end of carton and lay end down flat.
- Remove packing material.
- Roll mower out of carton and check carton thoroughly for loose parts.

HOW TO SET-UP YOUR LAWN MOWER

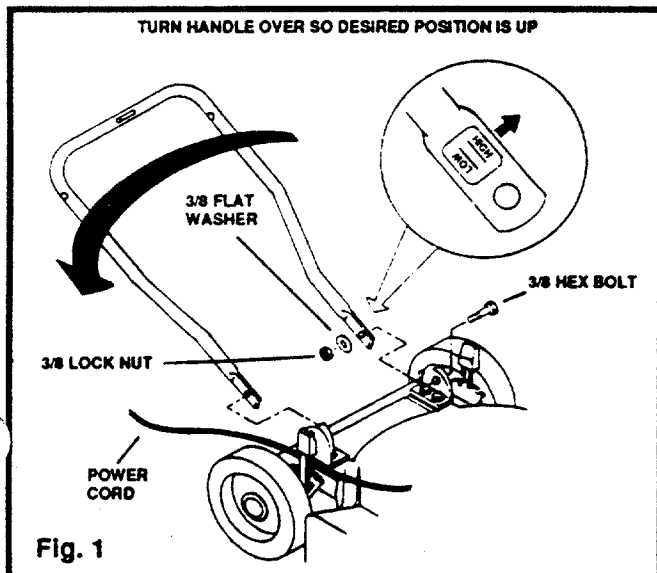
ATTACH LOWER HANDLE (See Fig. 1)

Your mower handle can be raised or lowered for your mowing comfort by assembling the lower handle in the desired position. This must be done before you assemble the upper handle.

- Lay upper handle on work surface behind mower and position power cord so it is on the outside of deck mounting bracket as shown.
- We recommend attaching the handles in the "HIGH" position. This will put the upper handle approximately 37 inches up from the ground with the wheels adjusted in the mid-position. The "LOW" position measurement is approximately 34 inches.
- Position lower handle in desired position by turning handle over so desired "HIGH" or "LOW" reading is upwards.
- Attach loosely one leg of lower handle to handle bracket with one (1) each 3/8-16 x 3/4" hex bolt, 3/8" flatwasher and 3/8-16 lock nut. Do not tighten.

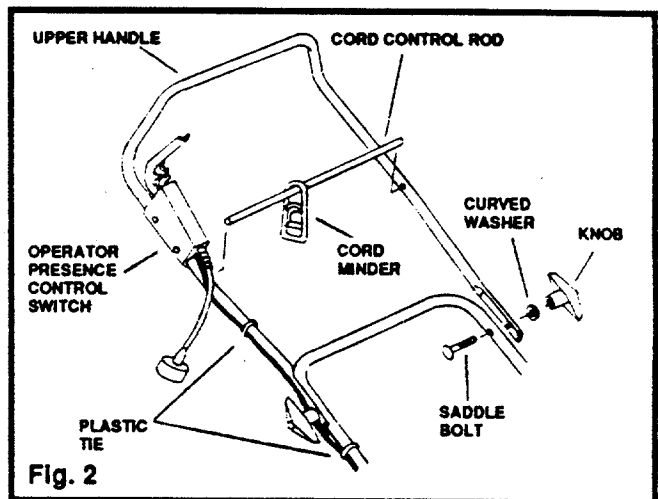
NOTE: Be sure hex bolt is assembled from the outside of bracket as shown.

- Repeat assembly for opposite side of lower handle.
- Now tighten all bolts and nuts securely on both sides of lower handle.



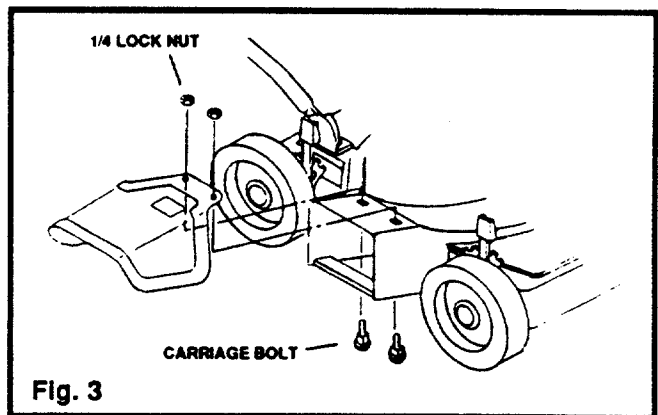
ATTACH UPPER HANDLE (See Fig. 2)

- Position upper handle so operator presence control switch is on right side, as viewed from behind mower, and assemble to one side only of lower handle with saddle bolt, curved washer and knob as shown.
- Remove extension cord control rod and cord minder from parts bag. Slide cord minder onto rod and slip rod into holes on inside of upper handle. **NOTE:** Slip rod into hole on one side of handle first, then, carefully spread legs of handle and insert opposite end of rod into other side of handle.
- Assemble remaining side of upper handle with saddle bolt, curved washer and knob as shown.
- Tighten knobs securely.
- Route power cord to lower handle with plastic ties (See Fig. 2).



ATTACH SAFETY CHUTE GUARD (See Fig. 3)

Assemble safety chute guard to mower with two (2) each carriage bolts and 1/4" locknuts as shown. Tighten nuts securely with 7/16" wrench.



CAUTION: DO NOT RUN YOUR LAWN MOWER WITHOUT CHUTE GUARD.

OPERATION

KNOW YOUR LAWN MOWER

READ THIS OWNER'S MANUAL AND SAFETY RULES BEFORE OPERATING YOUR ROTARY MOWER. Compare the illustrations with your Rotary Mower to familiarize yourself with the location of various controls and adjustments. Save this manual for future reference.

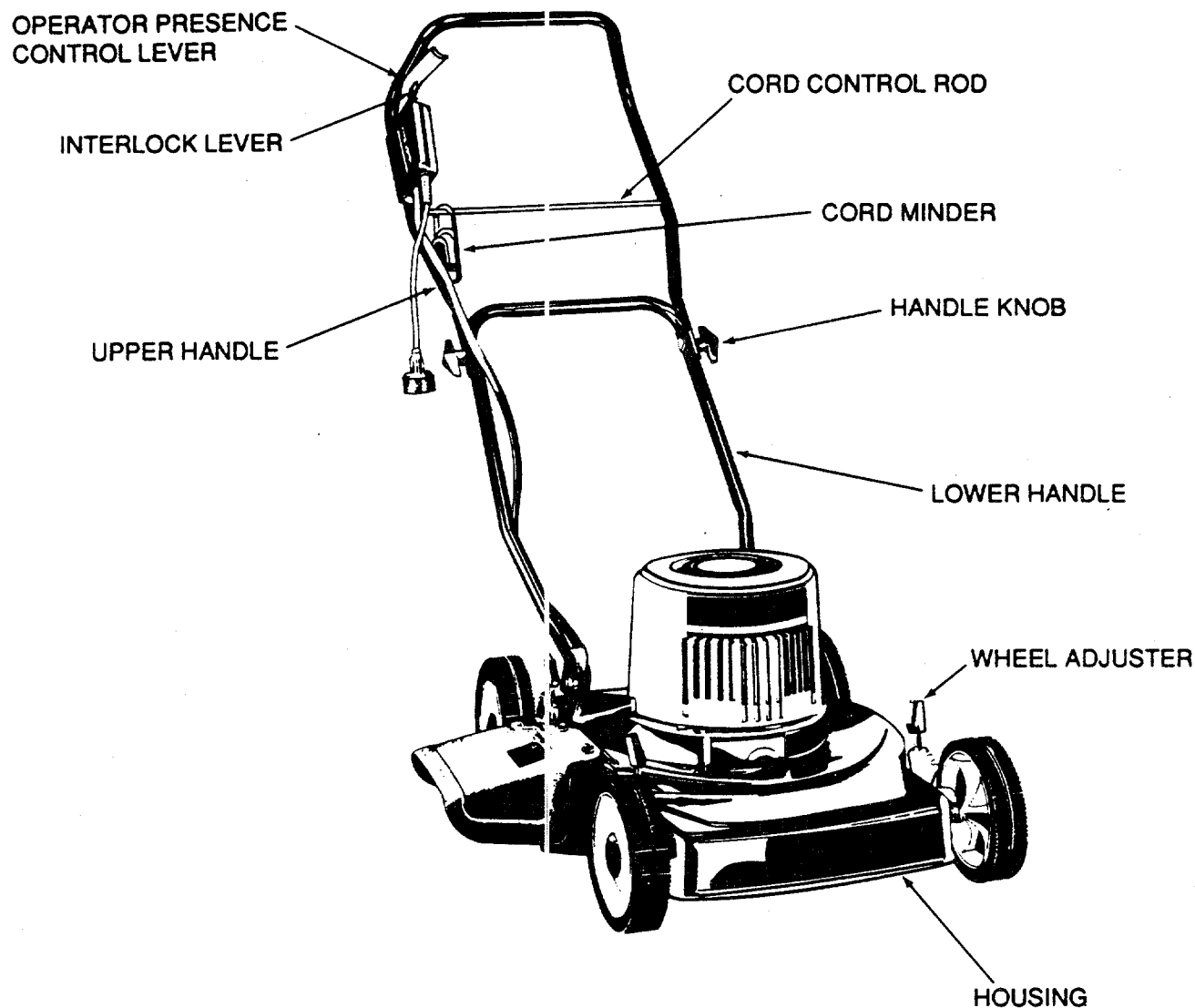


Fig. 4

MEETS CPSC SAFETY REQUIREMENTS

Our Rotary Walk-Behind Power Mowers conform to the safety standards of the American National Standards Institute, Underwriters Laboratories, Inc. and the U.S. Consumer Product Safety Commission. The blade turns when the motor is running.

OPERATOR PRESENCE CONTROL LEVER - must be pulled back to the handle to start and run the motor. Release to stop the motor.

INTERLOCK LEVER - must be pushed in to start motor. Helps prevent unintentional starting of motor.

CORD MINDER and CORD CONTROL ROD - Helps prevent disconnection of extension cord from switch box plug and keeps cord to side of handle - out of the way.

OPERATION

BEFORE USING YOUR LAWN MOWER, AGAIN REFER TO THE "SAFETY RULES" AS SHOWN ON PAGE 2 AND 3 OF THIS MANUAL. ALWAYS BE CAREFUL.



The operation of any Lawn Mower can result in foreign objects being thrown into the eyes, which can result in severe eye damage. Always wear safety glasses or eye shields before starting power tool operation or while performing any adjustments or repairs. We recommend wide vision safety mask for over spectacles or standard glasses available at your nearest distributor.

HOW TO USE YOUR MOWER

OPERATOR PRESENCE CONTROL SWITCH

Your mower has a control switch which requires the operator to be behind the handle to start and run the mower. When the operator releases the control switch lever the motor will stop and an internal brake helps the blade to stop quickly.

NOTE: The high pitch noise that you will hear is the deceleration of the electric motor. Sparking at top of motor is also normal during deceleration.

When the operator leaves the operating position to change the cutting height, pick up sticks or other objects in the way, the motor will stop automatically when the control lever is released.

ADJUST CUTTING HEIGHT (See Fig.5)

- Raise wheels for low cut and lower wheels for high cut.
- Adjust cutting height to suit your requirements. Medium position is best for most lawns.
- To change cutting height, squeeze adjuster lever toward wheel. Move wheel up or down to suit your requirements. Be sure all wheels are in the same setting.

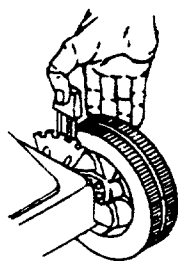


Fig. 5

BEFORE STARTING MOTOR



WARNING: MAKE SURE SWITCH LEVER IS IN "OFF" POSITION.

CORD CONNECTION (See Fig. 6A & 6B)

- Connect extension cord to cord minder. Allow enough excess cord to make switch box connection so cords will not separate when cord minder is in it's furthest position from switch box .

NOTE: Your mower switch box plug is equipped with a polarized AC power plug (one blade of the plug is wider than the other), which will fit into the power extension cord connector only one way . Should you be unable to insert the cord connector fully onto the switch box plug, try reversing the cord connector. Do not defeat the safety purpose of the polarized plug

- Plug extension cord into outlet. See page 2 and 3 for instructions on extension cords, power supply and grounding.

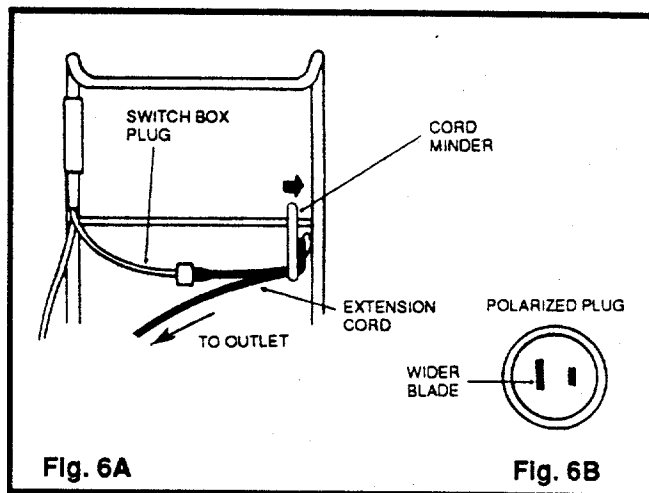


Fig. 6A

Fig. 6B

TO START MOTOR (See Fig. 7)

- TO RUN - Pull control lever back to handle with your right hand and push-in interlock lever with your left forefinger.
- TO STOP - Release control lever and motor will automatically shut-off.

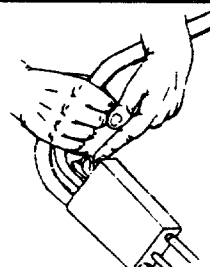
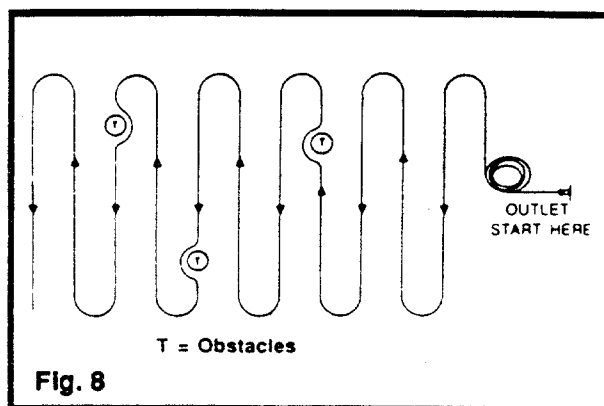


Fig. 7

OPERATION

MOWING TIPS (See Fig. 8)

- Under certain conditions, such as very tall grass, it may be necessary to raise the height of cut to reduce pushing effort and to keep from overloading the motor and leaving clumps of grass clippings.
- For extremely heavy cutting, reduce the width of cut.
- Never mow around the lawn in circles. Always travel back and forth across the lawn, beginning at the point nearest the electric outlet where you connect extension cord. Gradually move away from outlet as the lawn is mowed (This will keep the cord on the mowed area of the lawn and out of the way).
- Do not allow extension cord to become wrapped around trees, shrubs or other obstacles. Follow the technique illustrated.
- The length of extension cord you will need depends on the size of the area to be mowed. See extension cord information on page 2 of this manual.



MAINTENANCE



CAUTION: DISCONNECT POWER SUPPLY BEFORE PERFORMING ANY MAINTENANCE OR ADJUSTMENTS.

GENERAL RECOMMENDATION

- Follow the Service Recommendation Schedule on page 12.

MOWER

BLADE CARE

Your mower will work better with a sharp blade.

TO REMOVE BLADE (SEE FIG. 9):

- Turn mower on its side.
- Use a block of wood between blade and mower housing to prevent blade from turning when nut is removed. Protect your hands with gloves and/or wrap blade with heavy cloth.
- Remove keps nuts and open blade insulator.
- Remove cotter pin, blade nut, flatwasher, blade insulator and carriage bolts.

TO REPLACE BLADE (SEE FIG. 9):

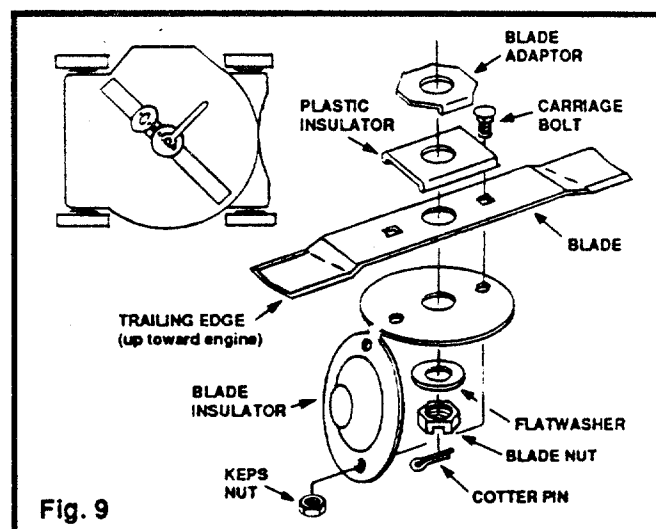
- All parts **MUST** be assembled in the exact order as shown.
- Be sure trailing edge of blade is up towards motor.
- Tighten blade nut securely (30-35 ft. lbs. torque).
- Re-insert cotter pin and bend ends to secure.

NOTE: If after tightening nut, the slot in nut is not aligned with hole in shaft, tighten nut, only enough to allow cotter pin insertion.



CAUTION: A LOOSE BLADE CAN BE DANGEROUS.

Use only original manufacturer's replacement blade to get the best cutting results.



NOTE: We do not recommend sharpening the blade - but if you do, be sure blade is balanced.

TO SHARPEN BLADE:

- The blade can be sharpened with a file or on a grinding wheel. Do not attempt to sharpen while on the mower.

MAINTENANCE

TO SHARPEN BLADE (Cont.):

- Care should be taken to keep the blade balanced. An unbalanced blade will cause excessive vibration when running and eventual damage to mower and motor.
- To check blade balance, drive a nail into a beam or wall. Leave about one inch of the straight nail exposed. Place center hole of blade over the head of the nail. If blade is balanced, it should remain in a horizontal position. If either end of the blade moves downward, blade is not balanced. Sharpen the heavy end until the blade is balanced.

CLEANING



CAUTION: DISCONNECT POWER SUPPLY CORD

- Clean your mower often to keep build-up of trash from accumulating around motor cover.
- Turn mower on its side.
- Clean the underside of your mower by scraping to remove build-up of grass and trash.

NOTE: We recommend that you clean the underside of your mower after each use. DO NOT use water.

SERVICE AND ADJUSTMENTS

TO ADJUST HANDLE HEIGHT

See "ATTACH LOWER HANDLE" in assembly section of manual.

TO ADJUST CUTTING HEIGHT

See "ADJUST CUTTING HEIGHT" in operation section of manual.

REAR TRAIL SHIELD

The rear trail shield, attached between the rear wheels of your mower, is provided to minimize the possibility that objects will be thrown out the rear of the mower into the operator mowing position.

If the shield becomes damaged, it should be replaced.

STORAGE

Your mower should be prepared for off-season storage as follows:

MOWER

- Clean underside of mower housing (See "CLEANING" in maintenance section of manual).
- Inspect and replace/sharpen blade, if required (See "BLADE CARE" in maintenance section of manual).
- Lubricate as shown in Service Recommendation chart on page 12 of manual.
- Make sure switch is in off position for storage.

HANDLE (See Fig. 10)

You can fold your mower handle for storage as shown.

- Loosen the two (2) hand knobs on sides of the handle and fold upper handle as shown.

NOTE: When folding handle for storage or transportation, be careful not bend or kink the power cord.

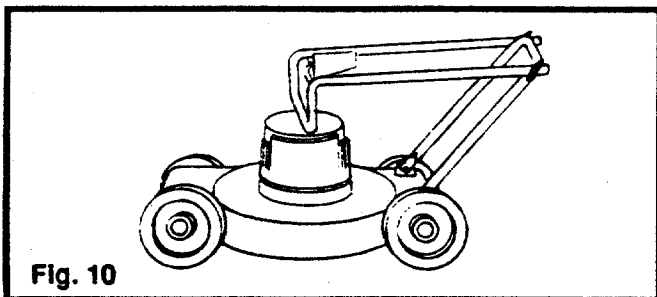


Fig. 10

OTHER

- Do not store your mower under any plastic cover. Plastic cannot breathe which allows condensation to form and cause your mower to rust.

EXTENSION CORDS

- Replace extension cord if cut or abraded.
- Extension cord should be wiped dry of any foreign substances such as oil or stains.
- Wind cord and store in cool, dry place (See cord winding tip).

CORD WINDING TIP (See Fig. 11).

- To help prevent snarling, as you pick cord up, wind cord in a series of equal loops on each side of your hand.

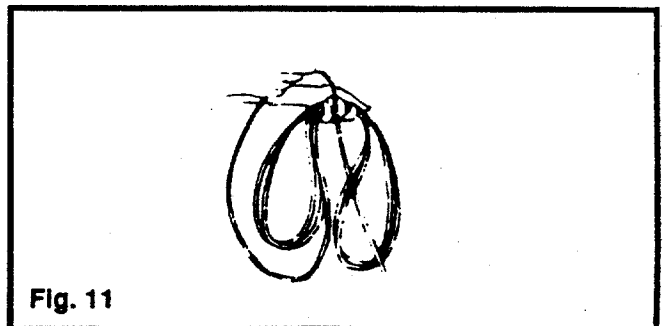


Fig. 11

SERVICE RECOMMENDATIONS

SERVICE RECORD Fill in Dates as you complete regular service	SCHEDULE		SERVICE DATES					
	Every 25 Hours	Every Use						
Blade Replaced	✓							
Lubricate Mower	✓							
Cleaning		✓						

✓ - CHECK

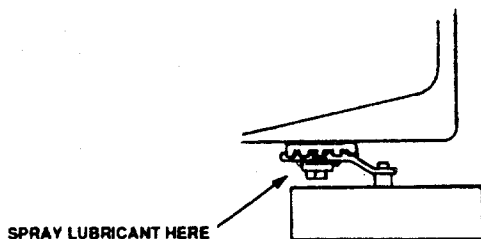
LUBRICATION

MOTOR

The motor on your mower does not require lubrication.

WHEEL ADJUSTERS

Use a spray lubricant on the wheel adjuster pivot bolt.



WHEELS

DO NOT oil or grease the wheel bearings. Viscous lubricants will attract dust and dirt that will shorten the life of the self-lubricating wheel bearings. If you feel the wheels must be lubricated, use only a dry, silicon type lubricant sparingly.

TROUBLE SHOOTING POINTS

PROBLEM	CAUSE	CORRECTION
Does not start	<ol style="list-style-type: none"> 1. Operator Presence Control Lever in released position. 2. Operator Presence Control Switch defective. 3. Extension cord disconnected. 4. Blown fuse or a tripped circuit breaker. 	<ol style="list-style-type: none"> 1. Pull back Operator Presence Control Lever- push in Interlock Lever. 2. Replace Control Switch. 3. Be sure that the extension cord is plugged into the outlet and the Lawn Mower switch plug. 4. Check to see if a fuse has been blown or a circuit breaker tripped in your electrical box.
Frequent Blowing of Fuses	<ol style="list-style-type: none"> 1. Circuit overloaded. 	<ol style="list-style-type: none"> 1. Do not use a higher rated fuse without consulting your power company. If condition persists, (be sure circuit is not overloaded) have your unit checked by your nearest Authorized Service Center.
Loss of Power	<ol style="list-style-type: none"> 1. Cutting too much grass. 2. Build-up of grass, leaves and trash under mower. 	<ol style="list-style-type: none"> 1. Set in "Higher Cut" position. 2. Disconnect power cord and clean underside of mower housing.
Poor cut - Uneven	<ol style="list-style-type: none"> 1. Worn, bent or loose blade. 2. Wheel heights uneven. 3. Build-up of grass, leaves and trash under mower. 	<ol style="list-style-type: none"> 1. Replace blade. Tighten blade nut. 2. Set all wheels at same height. 3. Disconnect power cord and clean underside of mower housing.
Too much Vibration	<ol style="list-style-type: none"> 1. Worn, bent or loose blade. 2. Bent motor shaft. 	<ol style="list-style-type: none"> 1. Replace blade. Tighten blade nut. 2. Contact Authorized Service Center.
Hard to Push	<ol style="list-style-type: none"> 1. High grass or cutting height too low. 2. Rear of mower housing/blade dragging in heavy grass. 3. Handle height position not right for you. 	<ol style="list-style-type: none"> 1. Raise cutting height. 2. Raise cutting height. 3. Adjust handle height to suit.

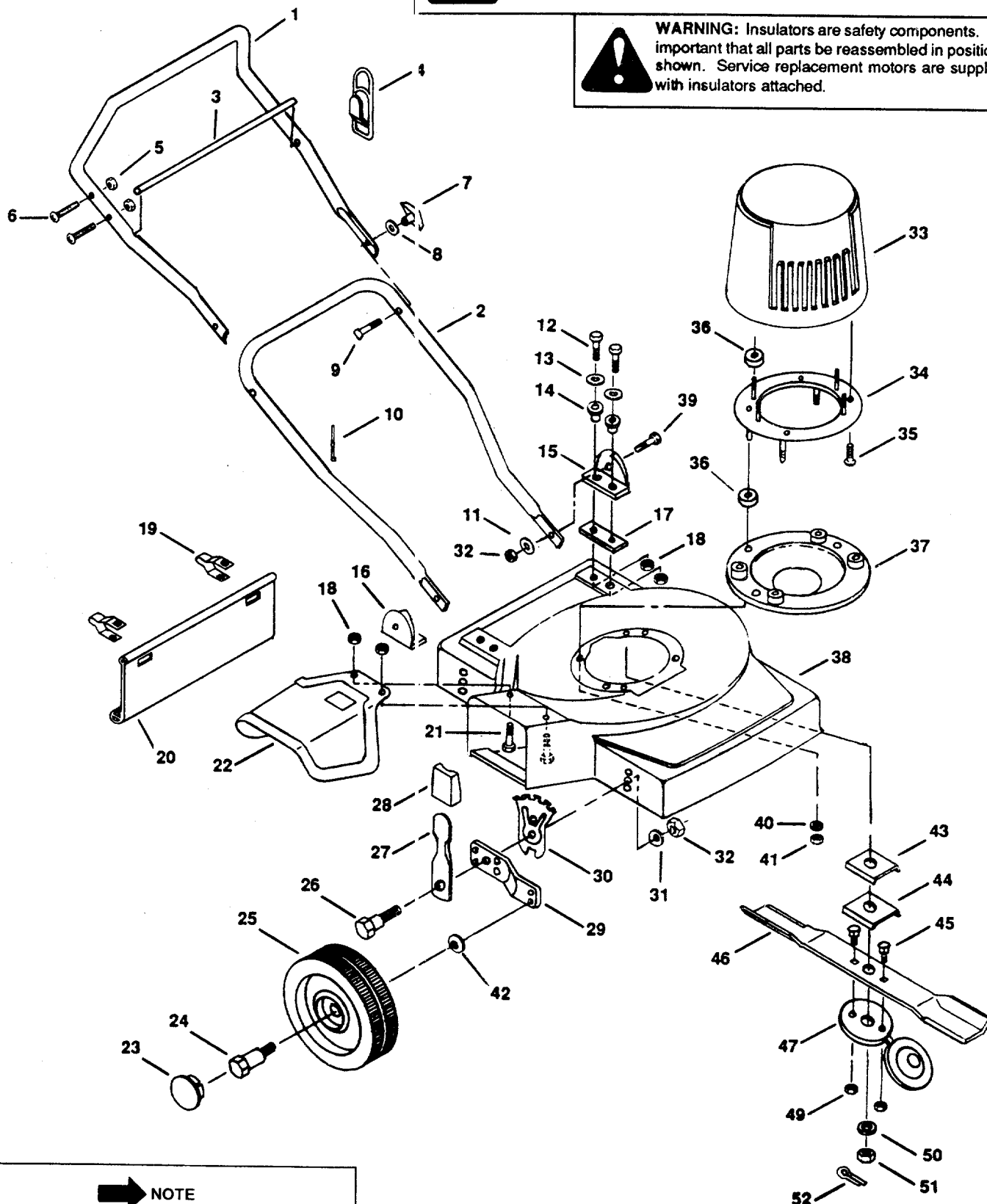
Model 014J (4016)



WARNING: The motor is an important part of the double insulated system. To avoid the possibility of alteration or damage to the system, it is recommended that service be performed by an authorized service dealer.



WARNING: Insulators are safety components. It is important that all parts be reassembled in positions shown. Service replacement motors are supplied with insulators attached.



NOTE

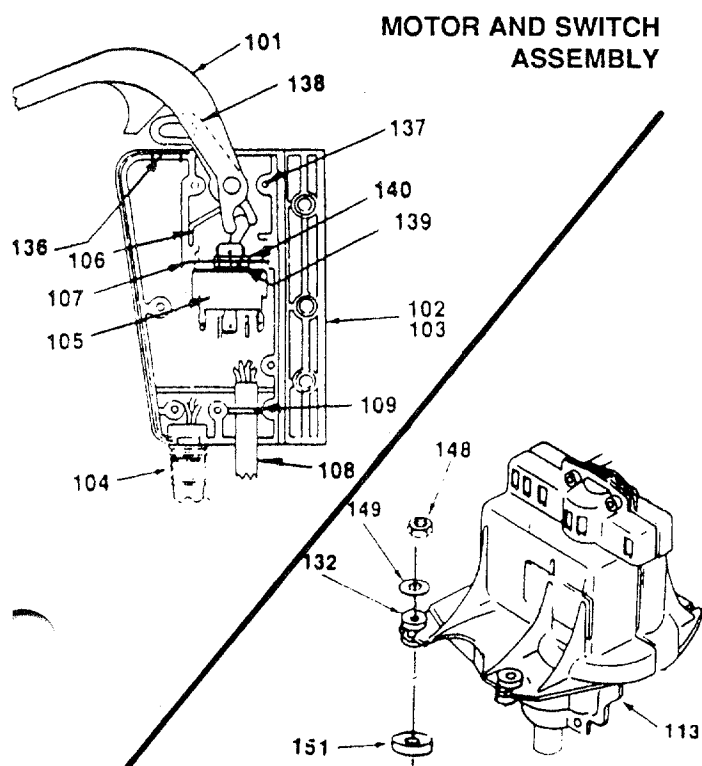
Specifications subject to change without notice or obligation.

Model 014J (4016)

PARTS LIST FOR MODEL 014J (4016) ROTARY MOWER

REF. NO.	PART NO.	CODE	DESCRIPTION	REF. NO.	PART NO.	CODE	DESCRIPTION
1	749-0876	N	Upper Handle	27	732-0404		Lever - Adjuster
2	749-0845		Lower Handle	28	720-0190		Knob - Adjuster
3	747-0795	N	Cord Control Rod	29	15262B		Pivot Arm - Adjuster
4	725-1590		Cord Minder	30	15261A		Plate - Height Adjuster
5	712-0161		Lock Nut #10-24	31	736-0356		Bell Washer (Larger)
6	710-1171		Mach. Screw #10-24 x 1-1/8"	32	712-0430		Hex Nut 3/8-16 Thd.
7	720-0241		Knob - Handle	33	731-1239		Motor Cover (Gray)
8	736-0486		Curved Washer 5/16" I.D.	34	682-9000		Plate Assembly
9	710-1152		Saddle Bolt 5/16-18 x 2"	35	710-1128		Tapping Screw #10 x 3/4"
10	726-0300		Plastic Tie	36	731-1175	N	Spacer - Motor Mounting
11	736-0485		Flat Washer 3/8" I.D.	37	731-1174	N	Shield
12	710-0206		Hex Bolt 1/4-20 x 7/8"	38	682-0004	N	Deck Ass'y. - 16" Steel
13	736-3090	N	Flat Washer 1/4" I.D.	39	710-0216		Hex Bolt 3/8-16 x 3/4"
14	731-1219		Insulator - Handle Bracket	40	736-0461		Flat Washer 5/16" I.D.
15	782-3019		LH Handle Bracket	41	712-0429		Lock Nut 5/16-18 Thd.
16	782-3018		RH Handle Bracket	42	736-0105		Bell Washer (Small)
17	721-0278		Insulator Strip	43	748-0343		Adapter - Blade Mounting
18	712-0324		Lock Nut 1/4-20 Thd.	44	731-1218		Insulator - Blade Adapter
19	17098		Clip - Trail Shield	45	710-0451		Carriage Bolt 5/16-18 x 3/4"
20	731-1027		Trail Shield	46	742-0566		Blade - 16" Electric
21	710-0134		Carriage Bolt 1/4-20 x 3/4"	47	731-1217		Insulator - Blade
22	731-1238		Safety Chute Guard	49	712-0434		Keps Nuts 5/16-18 Thd.
23	720-0251		Hub Cap	50	736-0462		Washer
	738-0102		Wheel Bolt				(Heat Treated Special)
	634-0010		Front Wheel - 6"	51	712-0401		Slotted Nut 1/2-20 Thd.
	634-0004		Rear Wheel - 7"	52	714-0228		Cotter Pin (Stainless Steel)
26	738-0507B		Pivot Bolt - Adjuster	-	770-7182F		Owner's Manual (Not Shown)

CODE: N notates a new part (not previously existing).



PARTS LIST FOR MOTOR AND SWITCH ASSEMBLY

REF. NO.	PART NO.	CODE	DESCRIPTION
101	725-1594		Handle - Switch
102	725-1593		Housing - Upper Half
103	725-1592		Housing - Lower Half
104	729-0316		Plug Assembly
105	725-1591		Switch
106	732-0666		Spring - Switch Handle
107	725-1596		Switch Mount Plate
108	629-0002		Cord Assembly
109	725-1595		Cord Restraint
113	624-0015	N	Motor & Switch Assembly Complete
132	731-1216		Insulator - Motor Housing
136	721-0281		Hole Plug
137	710-1172		Screw-Switch Box (Spec. Not Shown)
138	725-1597		Interlock Trigger
139	736-0192		Washer
140	712-0444		Nut-Switch Mounting
148	712-0324		Nut 1/4-20 Locking **
149	736-3090	N	Flat Washer 1/4" I.D. **
151	731-1175	N	Spacer - Motor Mounting **
-	818-60138		Cord & Switch Box Assembly (Complete)

** Not part of Complete Motor & Switch Assembly

HOW TO ORDER REPLACEMENT PARTS

The model number will be found on a label attached to your mower at the rear of the deck.

When ordering replacement parts, always give the following information:

1. Part Number
2. Part Description
3. Model Number of your Mower