

OWNER'S MANUAL

- ASSEMBLY
- OPERATION
- MAINTENANCE
- PARTS LIST

*5 HP
4 SPD TORQUE CONVERTER DRIVE*

**Model No.
138-402A**

*TRANSMISSION - 4 Speed AUTOMATIC DRIVE
TIRES; F-10.25" x 3.25" Semineumatic
R- 12.50" x 4.00 Semineumatic*

Important:

**Read Safety Rules and
Instructions Carefully**

26" RIDING MOWER



LIMITED WARRANTY

For one year from the date of original retail purchase, MTD PRODUCTS INC will either repair or replace, at its option, free of charge, F.O.B. factory or authorized service firm, any part or parts found to be defective in material or workmanship. Transportation charges under this warranty must be paid by the purchaser unless return is requested by MTD PRODUCTS INC.

This warranty will not apply to any part which has become inoperative due to misuse, excessive use, accident, neglect, improper maintenance, alterations, or unless the unit has been operated and maintained in accordance with the instructions furnished. This warranty does not apply to the engine, motor, battery, battery charger or component parts thereof. Please refer to the applicable manufacturer's warranty on these items.

This warranty will not apply where the unit has been used commercially.

Warranty service is available through your local authorized service dealer or distributor. If you do not know the dealer or distributor in your area, please write to the Customer Service Department of MTD.

The return of a complete unit will not be accepted by the factory unless prior written permission has been extended by MTD.

This warranty gives you specific legal rights. You may also have other rights which vary from state to state.

WARNING TO PURCHASERS OF INTERNAL COMBUSTION ENGINE EQUIPPED MACHINERY OR DEVICES IN THE STATE OF CALIFORNIA

The equipment which you have just purchased does not have a spark arrester. If this equipment is used on any forest covered land, brush covered land, or grass covered unimproved land in the State of California, before using on such land, the California law requires that a spark arrester be provided. In addition, spark arrester is required by law to be in effective working order. The spark arrester must be attached to the exhaust system and comply with Section 4442 of the California Public Resources Code.

IMPORTANT

It is suggested that this manual be read in its entirety before attempting to assemble or operate. Keep this manual in a safe place for future reference and for ordering replacement parts.

This unit is shipped WITHOUT GASOLINE or OIL. After assembly, see operating section of this manual for proper fuel and amount.

Your rotary mower is a precision piece of power equipment, not a plaything. Therefore exercise extreme caution at all times.

SAFE OPERATION PRACTICES FOR RIDING VEHICLES

1. Know the controls and how to stop quickly—**READ THE OWNER'S MANUAL.**
2. Do not allow children to operate vehicle. Do not allow adults to operate it without proper instruction. Only persons well acquainted with these rules of safe operation should be allowed to use your mower.
3. Do not carry passengers.
4. Keep the area of operation clear of all persons, particularly small children and pets. Stop engine when they are in the vicinity of your mower. Although the area of operation should be completely cleared of foreign objects, a small object may have been overlooked and could be accidentally thrown by the mower in any direction.
5. Clear work area of objects which might be picked up and thrown by the mower in any direction.
6. Disengage all attachment clutches and shift into neutral before attempting to start engine.
7. Disengage power to attachment(s) and stop engine before leaving operator position.
8. Disengage power to attachment(s) and stop engine before making any repairs or adjustments. Disconnect the spark plug wire and keep the wire away from the plug to prevent accidental starting.
9. Before attempting to unclog the mower or discharge chute, stop the engine and be sure the blade(s) have stopped completely. Disconnect the spark plug wire and keep the wire away from the plug to prevent accidental starting.
10. Disengage power to attachment(s) when transporting or not in use.
11. Take all possible precautions when leaving vehicle unattended such as disengaging power-take-off, lowering attachments, shifting into neutral, setting parking brake, stopping engine and removing key.
12. Do not stop or start suddenly when going uphill or downhill. Mow up and down face of steep slopes; never across the face.
13. Reduce speed on slopes and in sharp turns to prevent tipping or loss of control. Exercise extreme caution when changing direction on slopes.
14. Stay alert for holes in terrain and other hidden hazards.
15. Use care when pulling loads or using heavy equipment.
 - A. Use only approved drawbar hitch points.
 - B. Limit loads to those you can safely control.
 - C. Do not turn sharply. Use care when backing.
 - D. Use counterweight(s) or wheel weights when suggested in owner's manual.
16. Watch out for traffic when crossing or near roadways.
17. When using any attachments never direct discharge of material toward bystanders nor allow anyone near vehicle while in operation.
18. Handle gasoline with care—it is highly flammable.
 - A. Use approved gasoline container.
 - B. Never remove cap or add gasoline to a running or hot engine or fill fuel tank indoors. Wipe up spilled gasoline.
 - C. Open doors if engine is run in garage—exhaust fumes are dangerous. Do not run engine indoors.
19. Keep the vehicle and attachments in good operating condition, and keep safety devices in place. Use guards as instructed in owner's manual.
20. Keep all nuts, bolts, and screws tight to be sure the equipment is in safe working condition.
21. Never store the equipment with gasoline in the tank inside a building where fumes may reach an open flame or spark. Allow engine to cool before storing in any enclosure.
22. To reduce fire hazard keep engine free of grass, leaves or excessive grease.
23. The vehicle and attachments should be stopped and inspected for damage after striking a foreign object, and the damage should be repaired before restarting and operating the equipment.
24. Do not change the engine governor settings or overspeed the engine.
25. When using the vehicle with mower, proceed as follows:
 - (1) Mow only in daylight or in good artificial light.
 - (2) Never make a cutting height adjustment while engine is running if operator must dismount to do so.
 - (3) Shut the engine off and wait until the blade comes to a complete stop before removing the grass catcher.
 - (4) Check blade mounting bolts for proper tightness at frequent intervals.
26. Check grass catcher bags frequently for wear or deterioration. For safety protection replace only with new bag meeting original equipment specifications.
27. Look behind to make sure the area is clear before placing the transmission in reverse and backing up.

INDEX

Limited Warranty	2	Differential Assembly	16
Safe Operation Practices	3	Reversing Transmission	17
Index and Steering Wheel Assembly	4	Illustrated Parts for Main Body	18
Controls	5	Parts List for Main Body	19
Operating Instructions	7	Illustrated Parts for Frame View	20
Maintenance and Adjustments	8	Parts List for Frame View	21
Lubrication	12	Illustrated Parts for Deck and Belt System	22 & 24
Trouble Shooting Chart	14	Parts List for Deck and Belt System	23 & 25
Schematic of Electrical System	15	Parts Information	Back Cover

GRASS CATCHER Model No. 198-015A is available as optional equipment for the mowers shown in this manual.

WARNING

The mower should not be operated without the entire grass catcher or chute deflector in place.

NOTE

Under normal usage bag material is subject to wear, and should be checked periodically. Be sure any replacement bag complies with the mower manufacturer's recommendations.

For replacement bags, use only factory authorized replacement bag No. 764-0121.

IMPORTANT

After striking a foreign object, stop the engine. Remove wire from spark plug, thoroughly inspect the mower for any damage, and repair the damage before restarting and operating the mower.

The steering wheel with the necessary hardware, are easily assembled to the machine.

TIRE PRESSURE

FOR SHIPPING PURPOSES, THE TIRES ON YOUR UNIT MAY BE OVER-INFLATED. TIRE PRESSURE SHOULD BE REDUCED BEFORE UNIT IS PUT INTO OPERATION. PRESSURE SHOULD BE APPROXIMATELY 15 P.S.I. EQUAL TIRE PRESSURE SHOULD BE MAINTAINED ON ALL TIRES. MAXIMUM TIRE PRESSURE IS 30 P.S.I.

CAUTION

Installation of tire to rim:

1. Lubricate tire beads and rim flanges.

2. Do not exceed 30 P.S.I. when seating beads.

3. Adjust to recommended pressure after beads are sealed.

ASSEMBLY

NOTE

Reference to right-hand or left-hand side of machine is from the driver's seat facing forward.

STEERING WHEEL ASSEMBLY See figures 1, 2 and 3.

NOTE

Due to vibration during shipment, it is possible that the steering shaft on your unit may have dropped to a position where alignment of parts is difficult. This must be kept in mind during the assembly operation.

1. Check the upper and lower hex bearings, be sure they are seated and in position. See figure 1.
2. Place your hand under the front of the unit, push up on the steering shaft assembly.
3. Hold up the shaft assembly. Place the steering tube assembly on the shaft and start the hex screw through the hole. See figure 2.
4. Fasten the tubing assembly to the steering shaft assembly with hex screw and hex nut provided.
5. Place the cover over the steering tube assembly.
6. Place the steering wheel on the tubing assembly and fasten with belleville washer and hex nut. See figure 1.
7. Again, it may be necessary to raise the steering shaft assembly in order to put the hex nut on.
8. Place the steering wheel cap on by hand. See figure 3.

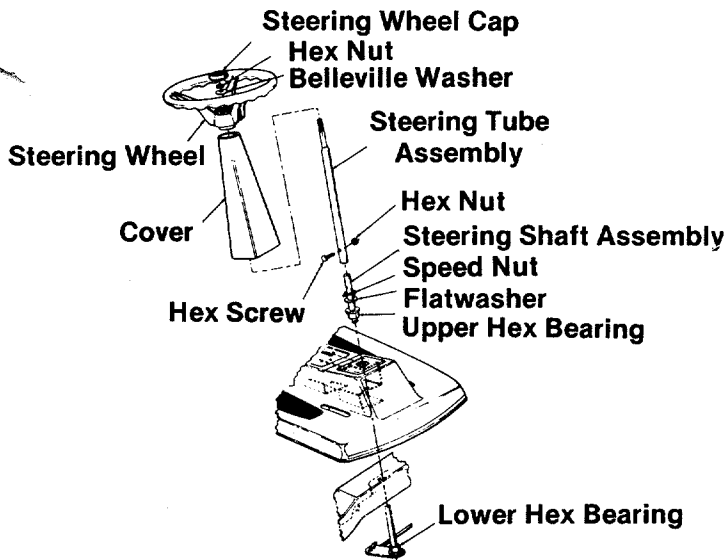


FIGURE 1. STEERING ASSEMBLY

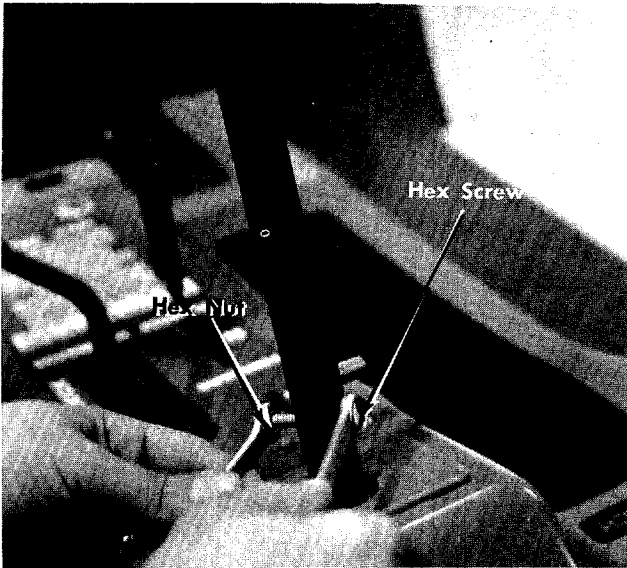


FIGURE 2. STEERING ASSEMBLY

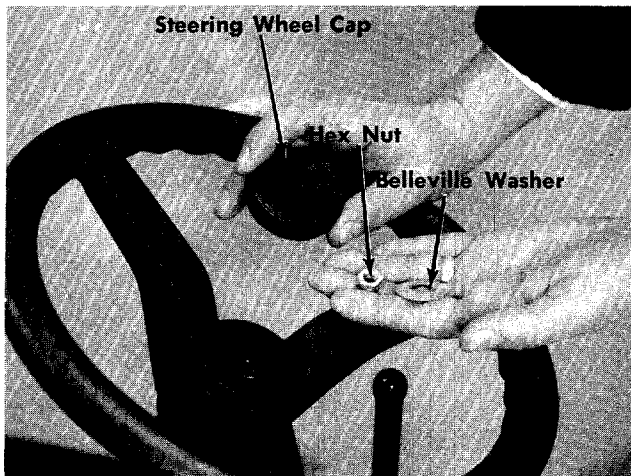


FIGURE 3. STEERING WHEEL ASSEMBLY

CONTROLS See figures 4 and 7.

This manual should be read in its entirety before you operate your Riding Mower. The more you know and understand about the machine and its operation, the better job it will do for you. While reading the manual, compare the illustrations with your mower to familiarize yourself with the locations of various controls, lubrication points, attachments and adjustment features.

Study the operating instructions and safety precautions thoroughly to insure proper functioning of your mower and to prevent injury to yourself and others. Be sure to save this manual for future reference.

THROTTLE CONTROL

The throttle control is used to regulate the engine speed and to activate the choke on the engine. To get maximum efficiency from cutting, the throttle should be in the FAST position when operating the mower. Pushing the throttle all the way forward, past FAST will choke the engine. See figure 4.

IGNITION KEY

The key must be turned to the ON position before you pull the recoil handle to start the engine. Remove the key when the mower is not in use. Turn the key to the left to the OFF position to stop the engine. See figures 8 and 9.

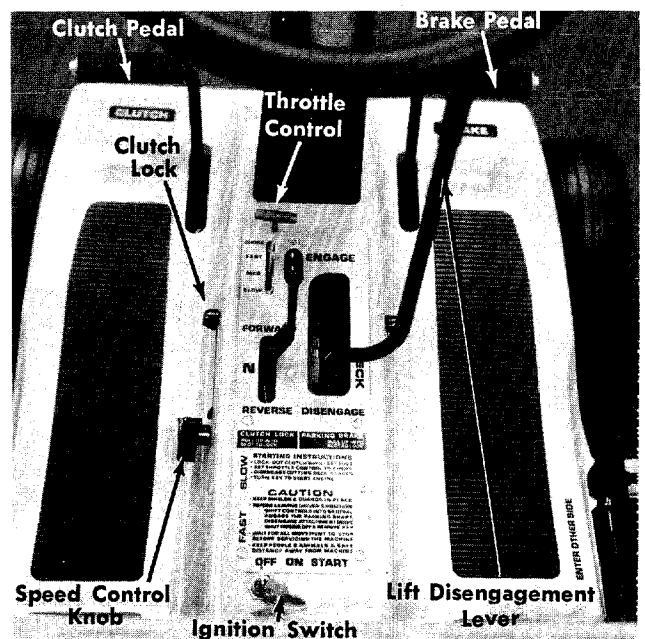


FIGURE 4. CONTROLS

LIFT AND DISENGAGEMENT LEVER

The lift and disengagement lever is used to raise and lower the cutting deck, set the cutting height, and disengage the cutting blades.

Move the lever to the right and move the lever all the way back and lock it to disengage the blades. The lever may be set in any one of the five cutting height positions.

INTERLOCKS (Not shown)

An interlock safety switch is located on the clutch pedal and the lift and disengagement lever.

The clutch pedal must be depressed down and locked.

The lift and disengagement lever must be in the STOP position (all the way back) before the engine can be started. Failure to follow these instructions will prevent starting.

GEAR SHIFT LEVER

The gear shift lever has three positions, FORWARD, NEUTRAL and REVERSE. The clutch pedal must be depressed and the riding mower must not be moving when shifting gears. Do not force the shift lever. Release the clutch pedal slightly to line up the shifting collar in the transmission. Then try to shift gears.

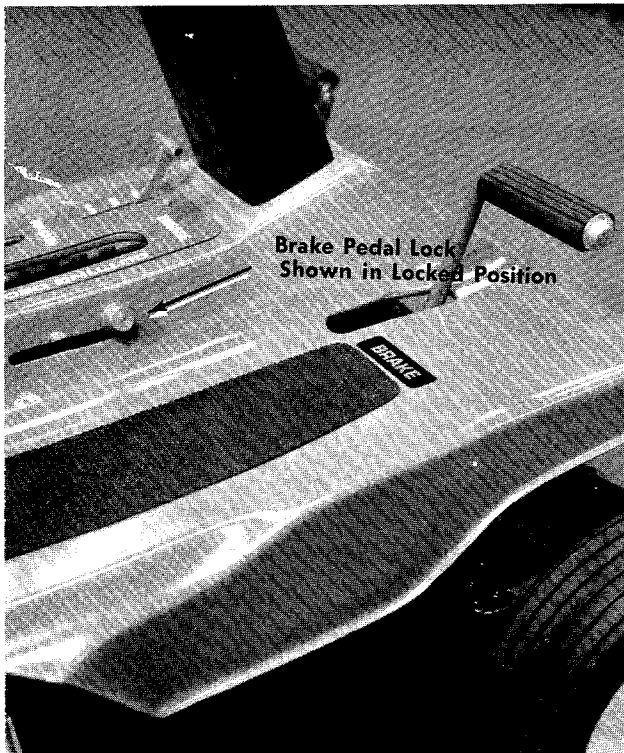


FIGURE 5. BRAKE PEDAL LOCK

BRAKE

To operate the brake, depress the right pedal all the way down. To lock the brake in park position, depress the right pedal all the way down and lift the brake lock. Pedal will stay in the depressed position. To release the parking brake, depress the pedal. See figure 5.

CLUTCH PEDAL

The clutch pedal on the left side when depressed, disengages the engine from the transmission. It can be held in the disengaged position by lifting the clutch lock. To stop the mower, depress the clutch and brake pedals. See figure 6.

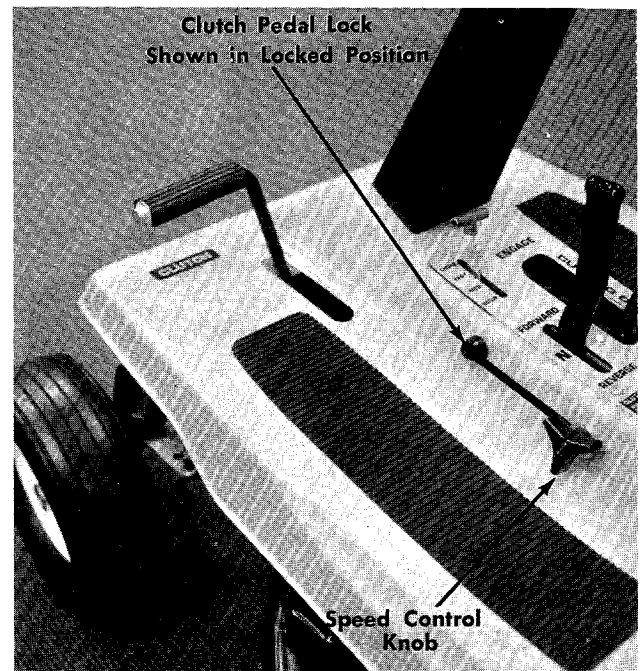


FIGURE 6. CLUTCH PEDAL LOCK

SPEED CONTROL KNOB

The speed control knob allows you to regulate the ground speed of the riding mower. See figure 6.



The further forward the speed control knob is set, the slower the ground speed.

OPERATING INSTRUCTIONS



CAUTION

1. Keep all shields and guards in place.
2. Before leaving operator's position:
 - Shift controls into neutral
 - Set parking brake (Brake Lock)
 - Disengage attachment drive
 - Shut off engine
 - Remove ignition key
3. Wait for all movement to stop before servicing machine.
4. Keep people and pets a safe distance away from machine.



CAUTION

Parking brake **must** be disengaged before unit is put into motion.



NOTE

Unit is equipped with separate brake and clutch pedals. To efficiently stop, it is necessary to disengage the clutch when applying the brakes.



NOTE

If these instructions are not followed the engine will stop running when the clutch or blade are engaged.

STARTING THE ENGINE

1. Be sure the crankcase is filled with oil as recommended in the engine manual and put regular gasoline in the gasoline tank.
2. Attach the wire to the spark plug.
3. Depress the clutch pedal and lock it down.
4. Move the lift and disengagement lever back to the disengaged position and lock it.
5. Set the throttle control lever in the CHOKE position.
6. Turn the ignition key to the ON position. Twist the recoil starter handle until it is free and pull it with a quick steady motion. After the engine starts, return the recoil starter handle. Twist it until it locks. See figures 8 and 9.

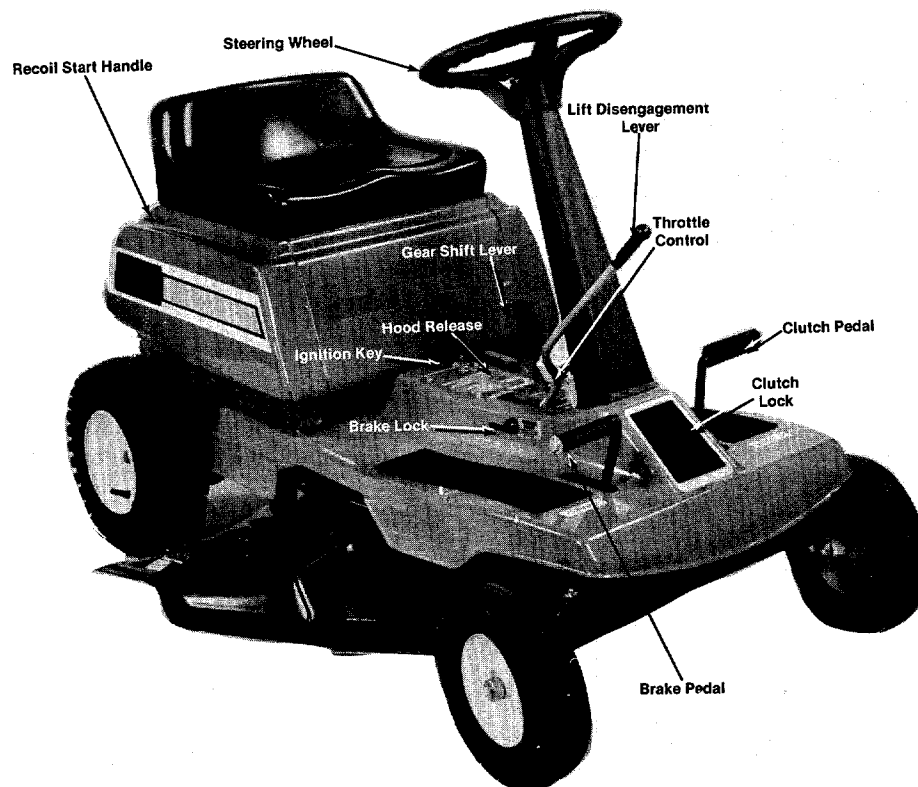


FIGURE 7. CONTROLS

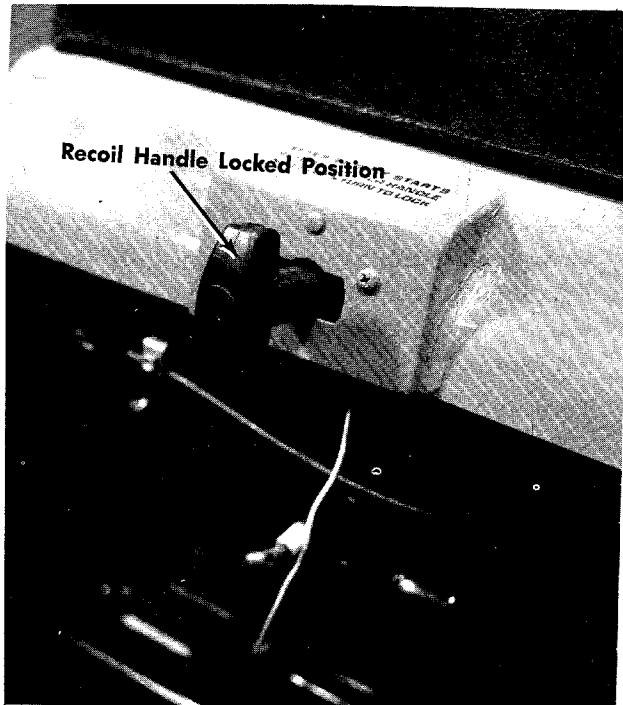


FIGURE 8. RECOIL HANDLE

7. Slowly return the throttle to the running position as soon as the engine starts.
8. To stop either model, turn the ignition key to the OFF position. Remove the key when the rider is not in use.



FIGURE 9. RECOIL HANDLE



FIGURE 10. STARTER SWITCH

PUTTING THE RIDING MOWER IN MOTION

1. Advance the throttle control from $\frac{3}{4}$ to full throttle to prevent strain on the engine and to operate the cutting blades.
2. Place the gear shift lever in either the FORWARD or REVERSE position.
3. Slowly release the clutch pedal.
4. To stop, depress the clutch and the brake pedals.
5. The blades can be engaged either while moving or while standing still. Move the lift and disengagement lever forward slowly until the blades are running.

STOPPING

Engine—Turn the ignition key to the left to the OFF position.

Rider—Depress the clutch and brake pedals.

Blades—Pull the lift and disengagement lever all the way back and lock it.

MAINTENANCE AND ADJUSTMENTS

THROTTLE CONTROL

To Check Operation:

1. Remove air cleaner.
2. Move throttle control lever to CHOKE position. The carburetor choke should be closed.
3. Move throttle control lever to STOP position. Lever should make good contact with stop switch.

To Adjust: See figure 11.

Place remote control lever on equipment in FAST (high speed) position.

Lever C on carburetor should be just touching choke arm at D. To adjust, loosen casing clamp screw A on blower housing. Move control casing B forward or backward until correct position is obtained. Tighten screw A.

Recheck operation of controls after adjustment. Replace air cleaner.

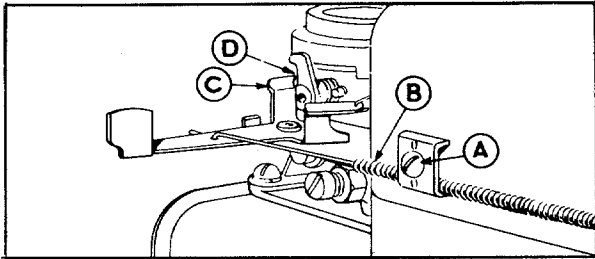


FIGURE 11. THROTTLE CONTROL ADJUSTMENT

CARBURETOR ADJUSTMENTS: See figure 12.

Minor carburetor adjustment may be required to compensate for differences in fuel, temperature, altitude and load.

Initial Adjustment:

Turn needle valve clockwise to close it. Then open 2 turns. This initial adjustment will permit the engine to be started and warmed up before making final adjustment.

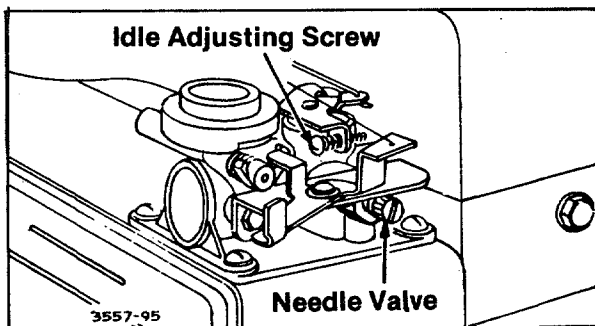


FIGURE 12. CARBURETOR ADJUSTMENT

Final Adjustment:

With engine running at normal operating speed (approximately 3000 RPM without load) turn needle valve clockwise until engine starts to lose speed (lean mixture). Then slowly turn needle valve counterclockwise past the point of smoothest operation, until engine just begins to run unevenly. This mixture will give best performance under load.

To check adjustment move engine control from SLOW to FAST speed. If engine tends to stall or die out, it usually indicates that the mixture is slightly lean and it may be necessary to open the needle valve slightly to provide a richer mixture. This richer mixture may cause a slight unevenness in idling.

CHAIN ADJUSTMENT: See figure 13.

After the first five hours of operation the initial slack should be removed from the chain. The chain should be tight enough so that it deflects approximately 1/2" when it is depressed with the thumb.

To Adjust:

The adjusting bolt is located under the frame, above the cutting deck on the right side of the mower.

Turn the adjusting bolt clockwise with an open end wrench until the chain reaches the proper tension.



NOTE

If the transmission mounting plate will not slide forward to adjust the chain tension, it may be necessary to loosen the four nuts mounting the transmission to the frame.

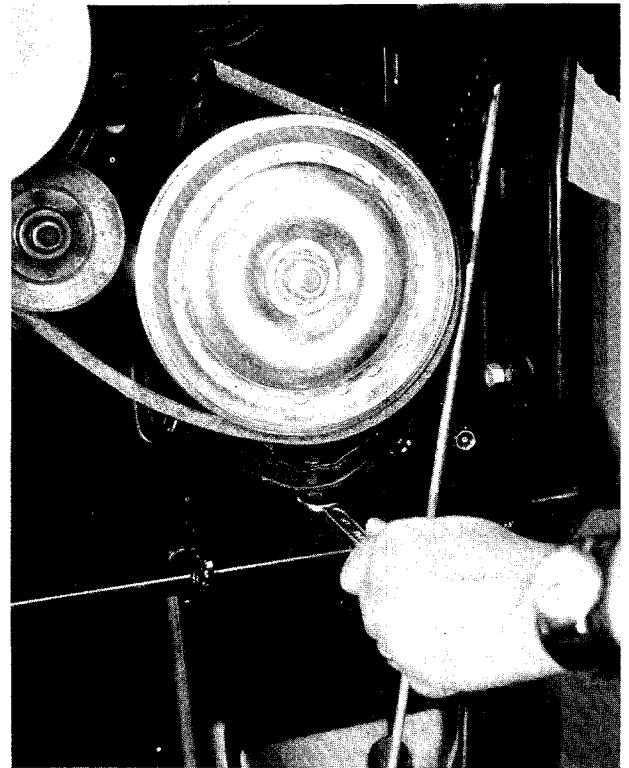


FIGURE 13. CHAIN ADJUSTMENT



NOTE

Deck was removed for photographing.

BRAKE ADJUSTMENTS: See figure 14.

To adjust the brake tighten the locknut one-half turn and then test the brakes.

The brake is located by the right rear wheel inside the frame.

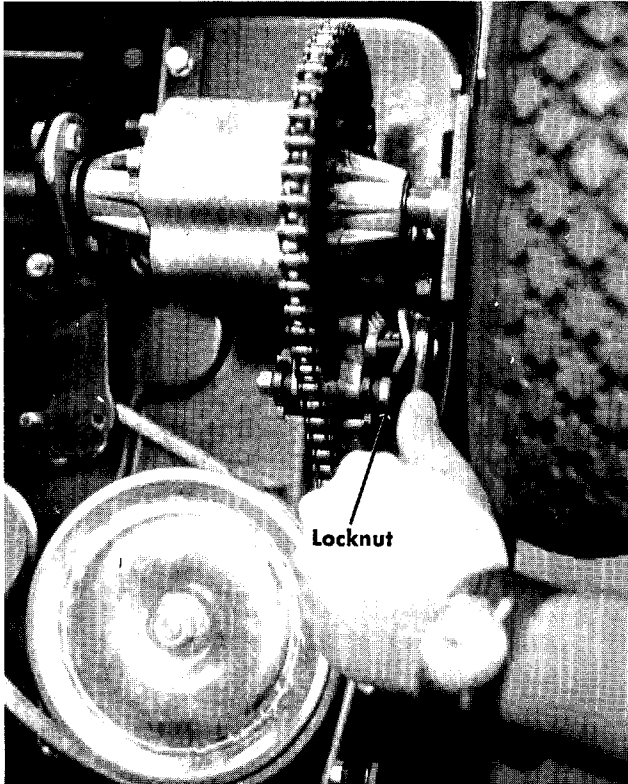


FIGURE 14. BRAKE ADJUSTMENT



Deck was removed for photographing.

BLADES



WARNING

Disconnect the spark plug wire and remove the ignition key before removing the blades.

Sharp and balanced blades are essential for efficient mowing and long mower and engine life. When sharpening blades, file equal amounts of metal from each side. The blades should be balanced before they are reinstalled. An unbalanced blade will cause excessive vibration and undue wear on the mower and the engine. When reassembling, all parts must be installed in the proper order and fastened securely.

Remove the 3/8" bolt and lockwasher. Pull the blade and adapter off the mower deck. To remove the adapter from the blade, remove the two 5/16" bolts, lockwashers and nuts. See figure 15.

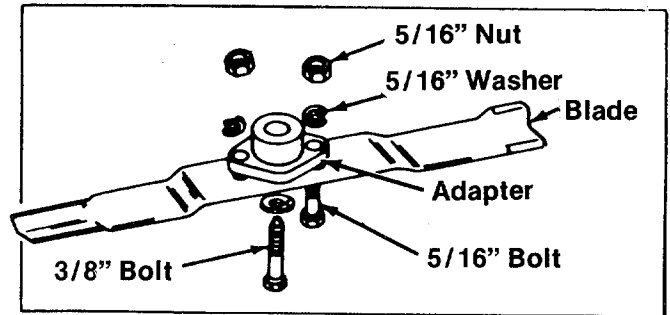


FIGURE 15. BLADE REMOVAL

MOWER DECK

The underside of the mower deck should be cleaned after each period of use as grass clippings, leaves, dirt and other matter will accumulate. This accumulation of grass clippings, etc., is undesirable as it will invite rust and corrosion and may cause an uneven discharge of grass clippings at the next mowing.

The deck may be cleaned by tilting the mower on its front wheels until the frame and the steering wheel supports the entire unit. Scrape clean with a suitable tool or by washing with a stream of water from a garden hose. Be sure to disconnect the spark plug wire and ground it while performing this maintenance.



To insure safe operation, ALL nuts and bolts must be checked periodically for correct tightness.

PREPARING FOR BELT REMOVAL

1. To prevent gasoline from leaking from the engine, remove the fuel tank cap, place a piece of thin plastic over the neck of the fuel tank and screw on the cap.
2. Disconnect the spark plug wire and ground it against the engine.

To Remove the Deck Belt

- Step 1. Put the lift and disengagement lever into the ENGAGED position.
- Step 2. Remove two belt keepers at the engine pulley. See figure 16.
- Step 3. Remove two belt keepers at the deck pulley and shoulder bolt. See figures 17 and 18.
- Step 4. DISENGAGE the deck and unhook the belt from the engine pulley.

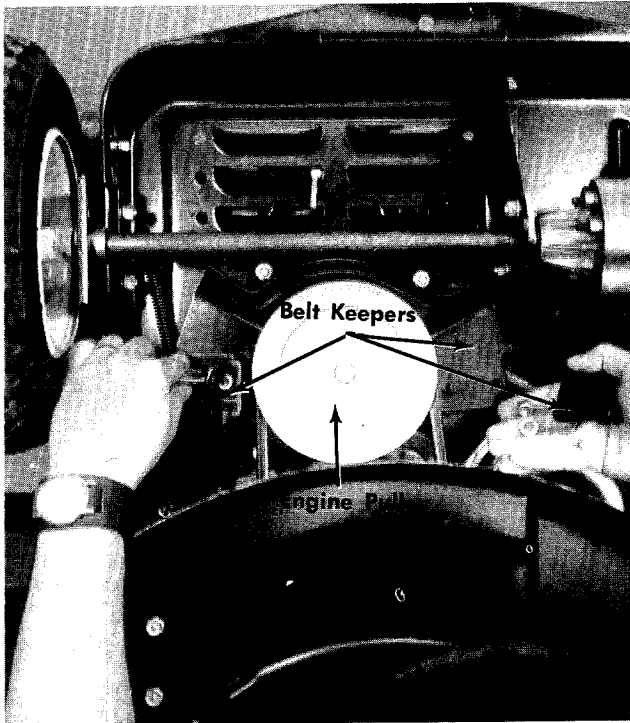


FIGURE 16. REMOVAL OF BELT KEEPERS

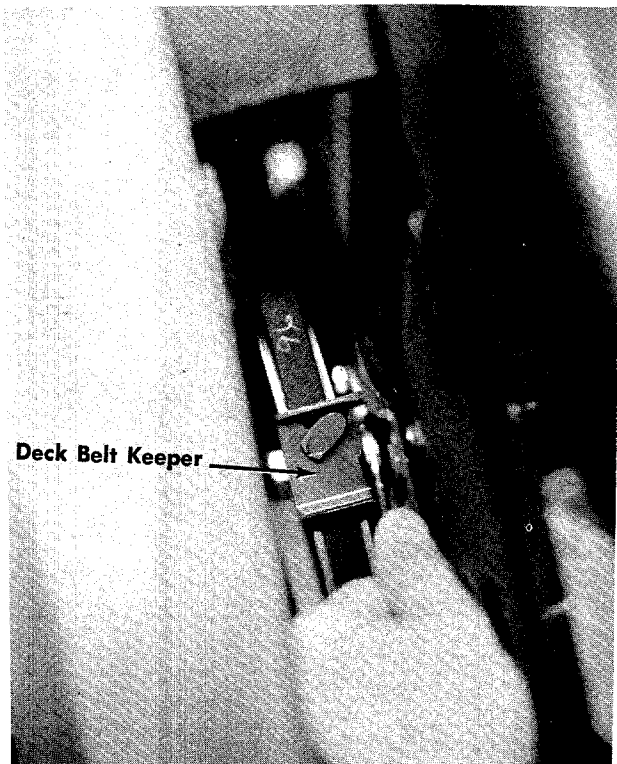


FIGURE 17. REMOVAL OF DECK BELT KEEPERS

Step 5. ENGAGE the deck and remove the belt.

To Remove the Drive Belt :

Step 1. Remove the two belt keepers at the engine pulley. DISENGAGE the deck and remove the belt.

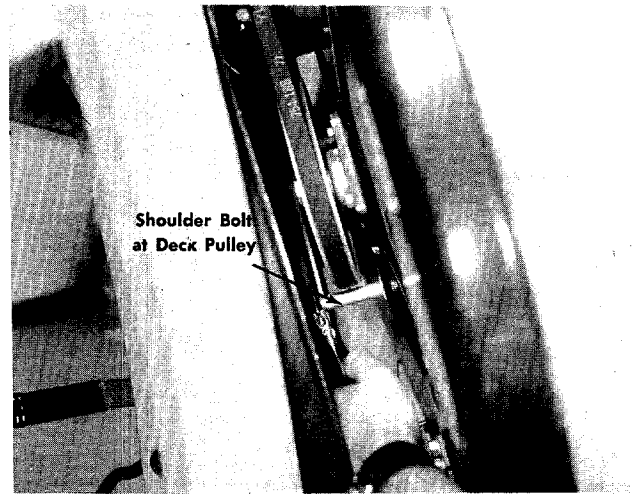


FIGURE 18. SHOULDER BOLT REMOVAL

Step 2. ENGAGE the deck and unhook the deck springs.



CAUTION

Deck will drop when last bolt is removed in step 3.

Step 3. Remove six hex screws, nuts and lockwashers holding the deck. See figure 19.

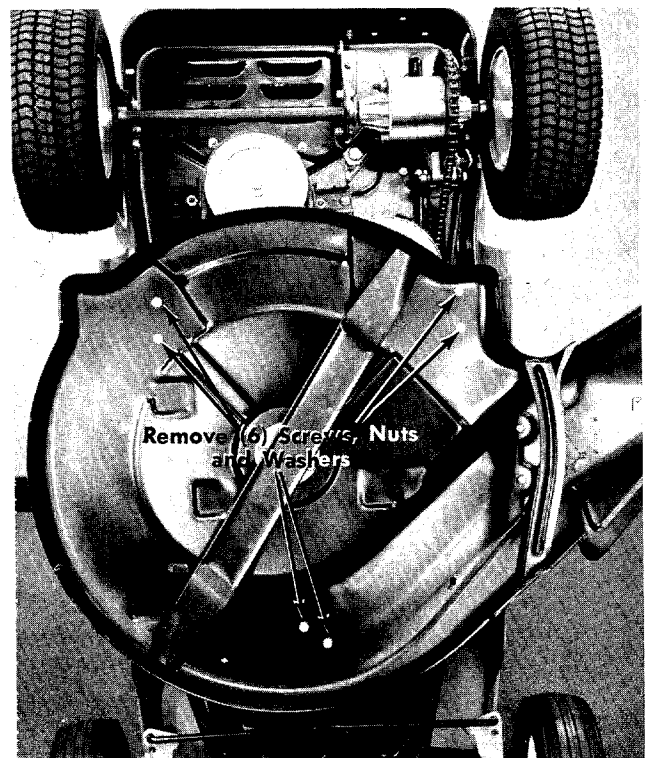


FIGURE 19. DECK REMOVAL

- Step 4. Remove the belt guard at the engine pulley. See figure 20.
- Step 5. Remove the nut and lockwashers at the transmission pulley and variable speed pulley. See figure 20.
- Step 6. Remove the locknut at the variable speed arm and lift off the spring. See figure 20.

NOTE

When reassembling the transmission pulley, place hub side up.

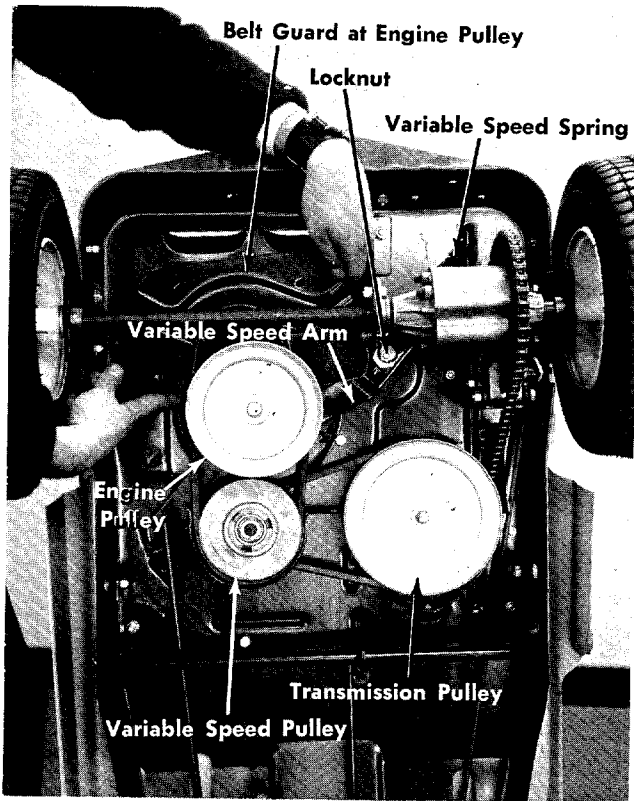


FIGURE 20. ENGINE BELT GUARD REMOVAL

LUBRICATION : See figure 21.

1. **Engine.** Maintain the engine oil according to the engine manual.
2. **Bearings.** The following bearings are oil impregnated and do not require lubrication, however, their normal life can be extended by lubricating them once a season with a light, non-detergent oil.
3. King Pin Bearings (total 4 bearings)
4. Rear Axle Bearings (total 3 bearings)
5. Front Wheel Bearings (total 4 bearings)

6. **Throttle Control and Cable.** Wipe oiled rag along entire length of cable.
7. **Chain.** Wipe oiled rag along entire length of chain.

NOTE

Under extremely dusty conditions do not oil the chain.

8. **Linkage.** Oil all deck linkage and height adjustment linkage.
9. **Transmission.** Lubricated at the factory, does not require checking. Lubricate with 4 oz. of Lubriplate No. 310 if disassembled.
10. **Differential.** Lubricated at the factory, does not require checking. Lubricate with 2 oz. of grease High Temp. 450°F. if disassembled. If ordered from the factory use Part No. 737-0120.
11. **Steering.** Lubricate at least once a season with oil.
12. **Variable Speed Pulley.** See page 24.

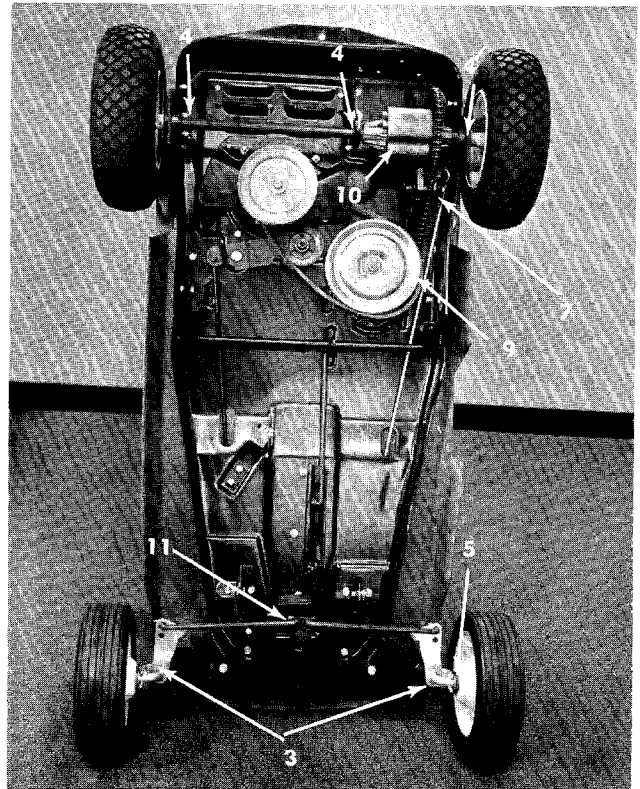


FIGURE 21. LUBRICATION POINTS

OFF-SEASON STORAGE



Engines to be stored over 30 days should be completely drained of fuel to prevent gum deposits forming on essential carburetor parts, fuel filters, fuel lines and tank.

1. Remove all fuel from fuel tank. Run the engine until it stops from lack of fuel. The small amount of fuel that remains in the sump of the tank should then be removed by absorbing it with a clean, dry cloth.
 2. While engine is still warm, drain oil from crankcase. Refill with fresh oil.
 3. Remove spark plug, pour 1 ounce of SAE 30 oil into cylinder and crank slowly to distribute oil. To prevent accidental starting, DO NOT replace the spark plug.
 4. Clean dirt and chaff from cylinder, cylinder head fins and blower housing.
 5. Clean all grass from underside of deck.
 6. Clean the air filter.
 7. Place blocks under frame of mower so that the wheels are off the ground.
 8. Cover all bare metal parts, such as the mowing edge of the blades, with grease to prevent rusting.
 9. Cover the mower with a tarpaulin or other protective covering.
-

TROUBLE SHOOTING CHART

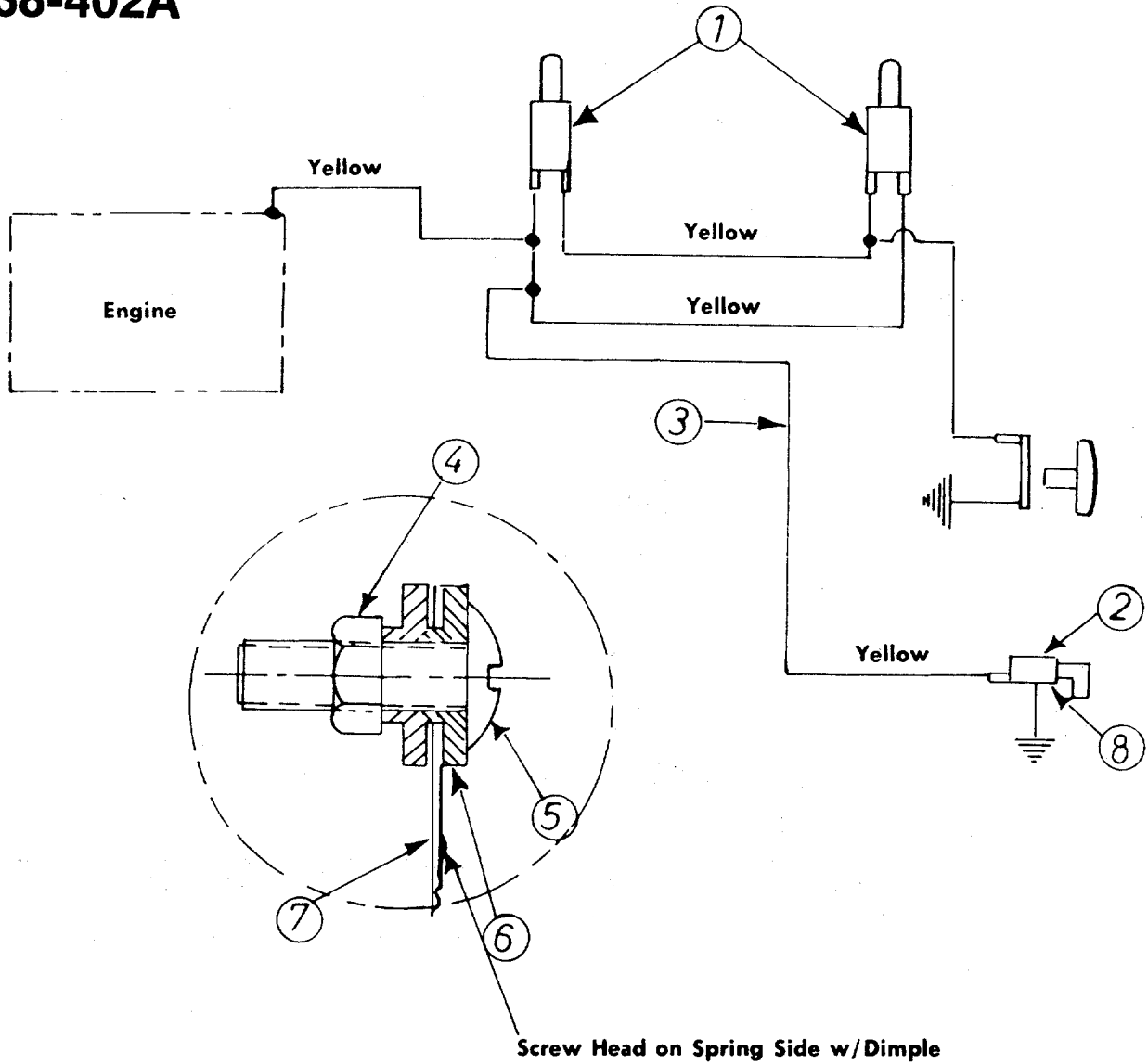


CAUTION:

ALWAYS DISCONNECT SPARK PLUG BEFORE ATTEMPTING ANY REMEDY.

TROUBLE	LOOK FOR	REMEDY
Engine fails to start.	Safety System	<p>If the engine will not start be sure the clutch control is disengaged; blade controls disengaged, the throttle control is set and the key is turned on.</p> <p>A. Disconnect the yellow wire from the engine. This comes from the ignition switch.</p> <p>B. If the engine fails to start the problem is with the engine, not the safety system.</p> <p>C. If the engine starts, the problem is with the safety system. Check the yellow wire for a ground.</p> <p>D. Check the operation of the switch behind the recoil starter handle.</p> <p>E. If the engine stops when the clutch or blade is engaged, the recoil handle is not pushed into the receptacle and twisted a quarter turn.</p>
	Blocked fuel line or empty gas tank	Clean fuel line; check fuel supply. Also check fuel shut-off valve.
	Defective spark plug	<p>Spark plug lead wire disconnected.</p> <p>Faulty spark plug—spark should jump gap between control electrode and side electrode. If spark does not jump, replace spark plug.</p> <p>NOTE: Use insulated pliers to hold the spark plug wire.</p>
	Throttle setting	Throttle control lever not in the starting position.
	Loose connections	Spark plug wire loose.
Hard starting or loss of power.	Dirty air cleaner	Remove air cleaner and clean as outlined in Engine Manual .
	Carburetor improperly adjusted	Review paragraph Carburetor Adjustment .
Excessive vibration.	Bent or damaged blade spindle	Stop engine immediately; tighten all bolts and make all necessary repairs. If vibration continues, have the unit serviced by a competent repairman.
Unit fails to discharge grass.	Discharge chute clogged	Clean discharge chute and inside of deck.
	Foreign object lodged in deck	Remove object from deck. See CAUTION following step 1 in paragraph Operation .
Engine overheats.	Obstructions in air passages	Remove any obstruction from air passages in shroud. Grass and dirt in engine shroud. Clean cooling fins.
	Oil level	Fill crankcase to proper oil level.

138-402A

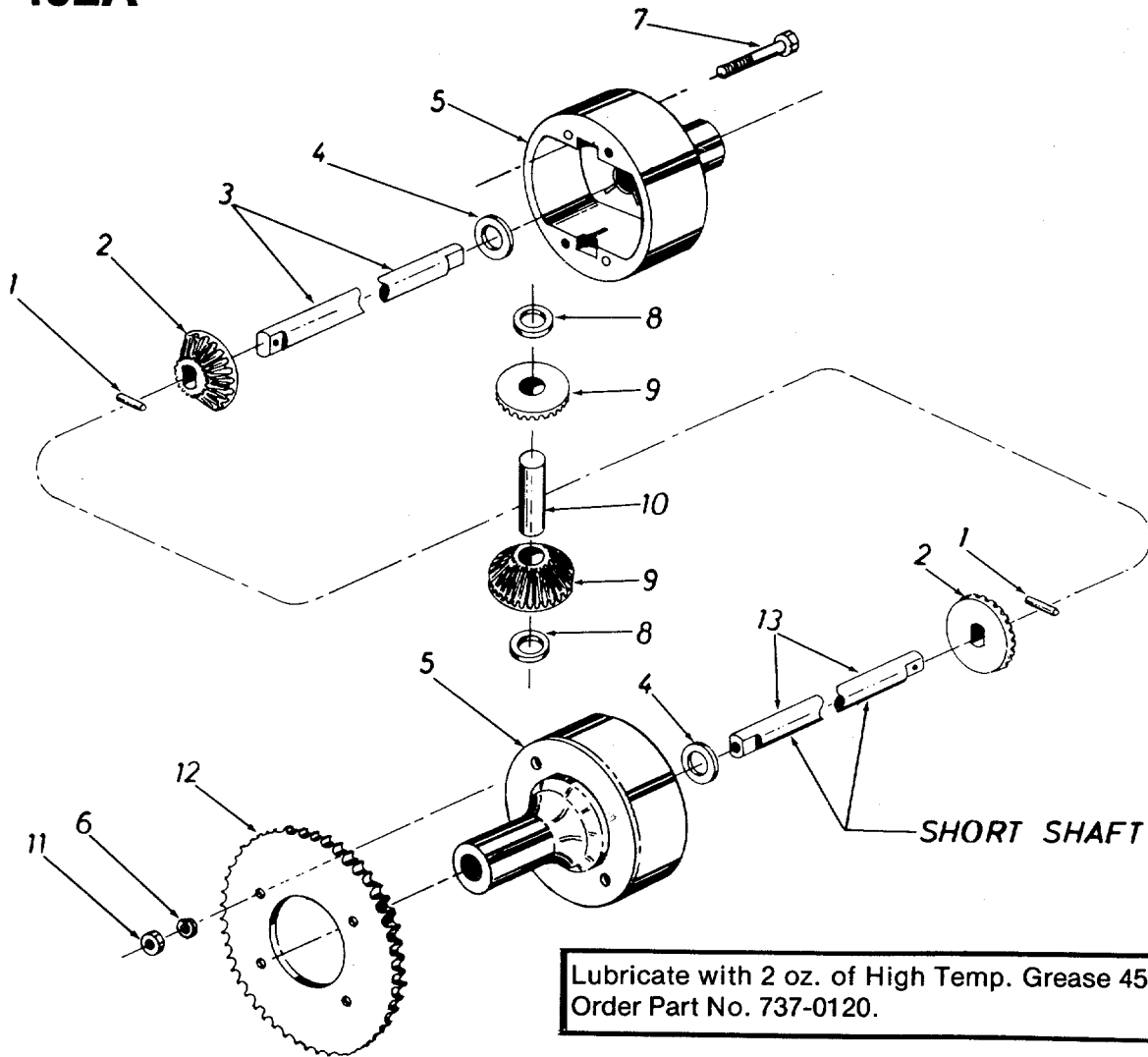


PARTS LIST FOR SCHEMATIC MODEL 138-402A

REF. NO.	PART NO.	DESCRIPTION	NEW PART
1	725-0269	Safety Switch Norm Closed— Red	
	725-0379	Safety Switch	
2	725-0464	Magneto Ignition Switch	
	725-0201	Ignition Key	
3	725-0407	Wire Harness	
4	712-0121	Hex Nut #10-24	
5	710-0425	Truss Mach. Scr. #10-24 x .62	
6	736-0338	Fiber Washer	
7	732-0257	Switch Spring	
8	736-0225	Internal L-Wash. 5/8 I.D.	

*For faster service obtain standard nuts, bolts and washers locally. If these items cannot be obtained locally, order by part number and size as shown on parts list.

138-402A



Lubricate with 2 oz. of High Temp. Grease 450°F.
Order Part No. 737-0120.

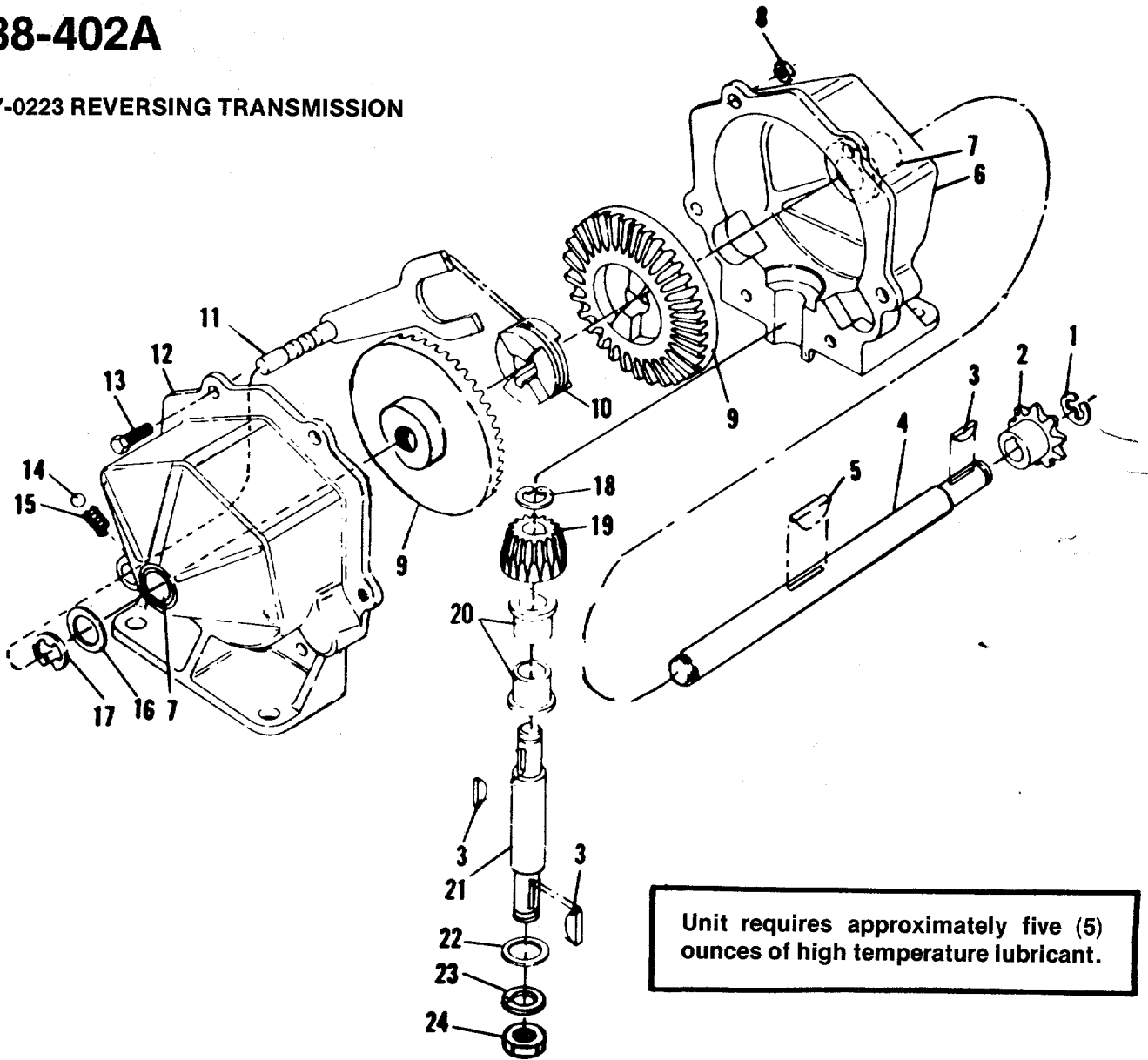
PARTS LIST FOR DIFFERENTIAL ASSEMBLY 717-0328

REF. NO.	PART NO.	Qty. Req'd.	DESCRIPTION	NEW PART
1	715-0247	2	Spring Pin Spir. 3/16" Dia. x 1.00" Lg.	
2	748-0185	2	Gear—Double "O" Hole	
3	738-0300	1	Shaft—Long 19.31" Lg.	
4	736-0188	2	FI-Wash. .760 I.D. x 1.49 O.D.	
5	717-0341	2	Housing Half	
6	736-0119	2	L-Wash. 5/16" Scr. *	
7	710-0363	2	Hex Scr. 5/16-24 x 4.00" Lg. *	
8	736-0187	2	FI-Wash. .640 I.D. x 1.24 O.D.	
9	748-0158	2	Gear—Round Hole	
10	711-0276	1	Drive Pin	
11	712-0237	2	Hex Cent. L-Nut 5/16-24 Thd.	
12	09054	1	Sprocket—40 Tooth	
13	738-0301	1	Shaft—Short 7.07" Lg.	

*For faster service obtain standard nuts, bolts and washers locally. If these items cannot be obtained locally, order by part number and size as shown on parts list.

138-402A

717-0223 REVERSING TRANSMISSION



Unit requires approximately five (5) ounces of high temperature lubricant.

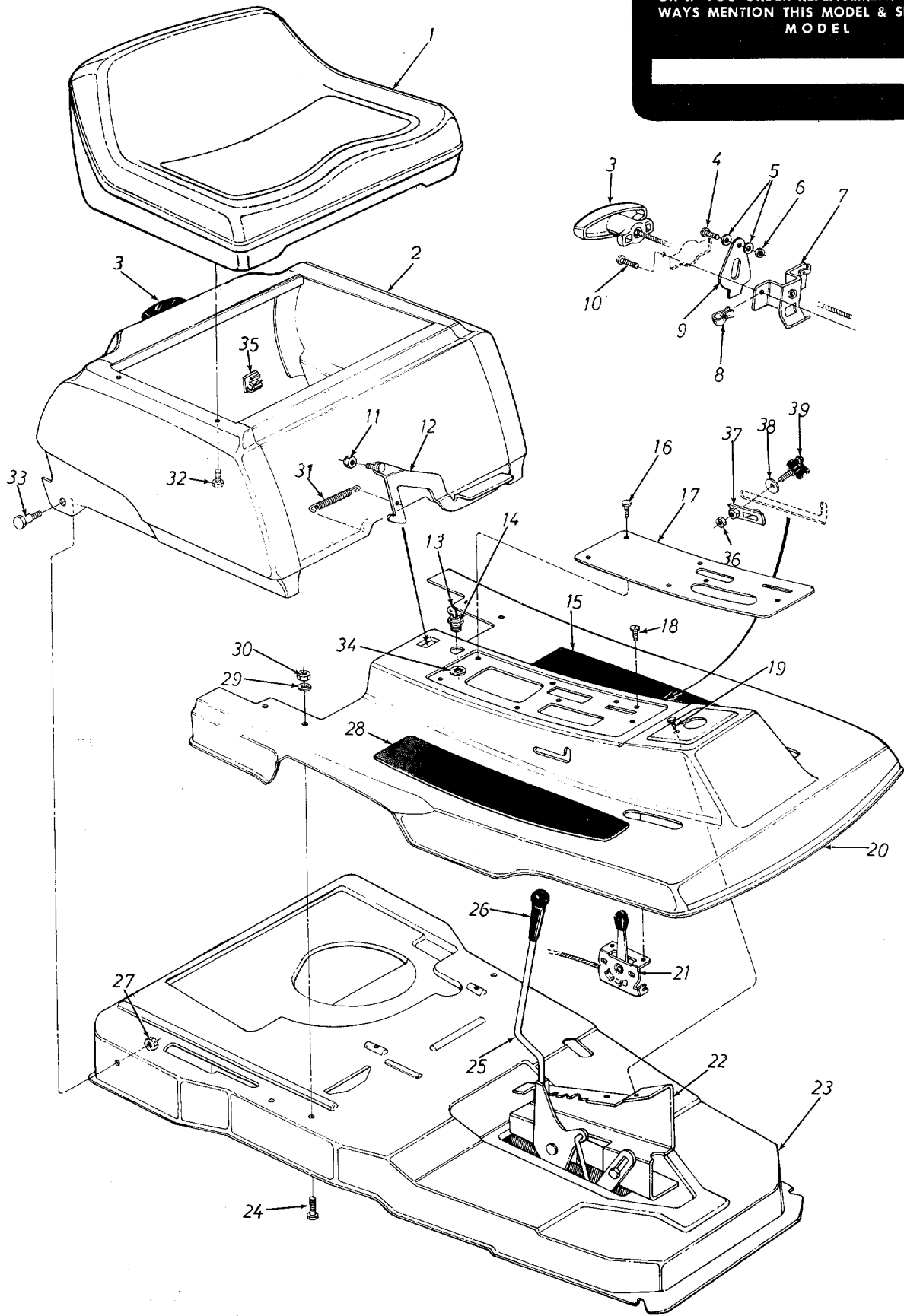
PARTS LIST FOR REVERSING TRANSMISSION 717-0223

REF. NO.	PART NO.	COLOR CODE	DESCRIPTION	NEW PART	REF. NO.	PART NO.	COLOR CODE	DESCRIPTION	NEW PART
1	716-0104		E-Ring for .500" Dia. Shaft		14	741-0862		Detent Ball	
2	748-0852		Sprocket 8 Tooth		15	732-0863		Detent Spring	
3	714-0129		#4 Hi-Pro Key 3/32 x 5/8" Dia.		16	736-0116		FI-Wash. .635 I.D. x .93 O.D.	
4	711-0854		Output Shaft		17	716-0106		E-Ring for .625" Dia. Shaft	
5	714-0126		#9 Hi-Pro Key 3/16 x 3/4" Dia.		18	716-0865		Snap Ring for .500" Dia. Shaft	
6	717-0123		Trans. Case—L.H. Comp.		19	748-0866		Pinion Gear	
7	748-0855		Flange Brg.		20	748-0867		Bearing .627 I.D.	
8	712-0117		Hex Centerlock 1/4-28*		21	738-0159		Pinion Shaft	
9	748-0856		Bevel Gear		22	736-0192		FI-Wash. .531 I.D. x .93 O.D.	
10	748-0857		Clutch Collar		23	736-0921		Spring L-Wash. 1/2" Scr. *	
11	310-08583		Shift Yoke Ass'y.		24	712-0922		Hex Jam Nut 1/2-20 Thd. *	
12	717-0124		Trans. Case—R.H.—Comp. (With Detent Hole)		25	737-0120		Grease—High Temp. 450°F (5 oz.)	
3	710-0195		Hex Hd. Cap Scr. 1/4-28 x .62" Lg. *		26	717-0223		Transmission Complete	

*For faster service obtain standard nuts, bolts and washers locally. If these items cannot be obtained locally, order by part number and size as shown on parts list.

138-402A

IF YOU WRITE TO US ABOUT THIS ARTICLE
OR IF YOU ORDER REPLACEMENT PARTS AL-
WAYS MENTION THIS MODEL & SERIAL NO
MODEL



PARTS LIST FOR MAIN BODY MODEL 138-402A

REF. NO.	PART NO.	COLOR CODE	DESCRIPTION	NEW PART	REF. NO.	PART NO.	COLOR CODE	DESCRIPTION	NEW PART
1	757-0265		Seat—Comp.		21	746-0239		Throttle Control—R. H.	
2	12131	—463	Cover Ass'y.		22	12150		Index and Support Brkt.	
3	11263		Plastic Handle		23	12125	—463	Main Frame	
4	710-0425		Truss Mach. Scr. #10-24 x .62" Lg.*		24	710-0198		Hex Sems Scr. 5/16-18 x .75" Lg.*	
5	736-0338		Fiber Wash.		25	12142		Deck Lift Handle Ass'y.	
6	712-0121		Hex Nut #10-24 Thd.		26	720-0143		Grip	
7	11053		Switch Brkt. Ass'y.		27	712-0158		Hex Cent. L-Nut 5/16-18 Thd.	
8	712-0344		Speed Nut #10Z		28	723-0241		Foot Pad	
9	732-0257		Switch Sprg.		29	736-0119		L-Wash. 5/16" Scr.*	
10	710-0351		Truss Mach. B-Tapp. Scr. #10 x .50" Lg.*		30	712-0267		Hex Nut 5/16-18 Thd.*	
11	712-0429		Hex Ins. L-Nut 5/16-18 Thd.		31	732-0118		Extension Spring	
12	12144		Latch—Engine Cover		32	710-0289		Hex Scr. 1/4-20 x .50" Lg.*	
13	725-0201		Ignition Key		33	738-0155		Shld. Scr. .437 Dia. x .162	
14	725-0464		Ignition Switch		34	736-0225		Int. L-Wash. 5/8 I.D.	
15	723-0241		Foot Pad		35	726-0141		Adjustment Clamp	
16	710-0456		Hex Drilling Scr. #10 x .50		36	712-0158		Hex Cent. L-Nut 5/16-18 Thd.	
17	12175	—463	Cover Plate		37	12166		Speed Control Bracket	
18	710-0227		Hex Drilling Scr. #10 x .50		38	736-0219		Belleville Wash.	
19	710-0456		Truss Mach. B-Tapp Scr. #10 x .50" Lg.*		39	720-0170		Hand Knob	
20	12128	—463	Floor Pan						

WHEEL CHART

FRONT WHEEL		REAR WHEEL	
PART NO.	DESCRIPTION	PART NO.	DESCRIPTION
734-0510	Wheel Ass'y.—Comp.	734-0522	Wheel Ass'y.—Comp.
10152	Rim with Hub Ass'y.	734-0517	Rim with Hub Ass'y.
748-0146	Bearing	734-0301	Tire Only 12.2 x 3.7
—	Hub Part of Rim	741-0199	Bearing
		—	Hub Part of Rim
		734-0255	Air Valve

*For faster service obtain standard nuts, bolts and washers locally. If these items cannot be obtained locally, order by part number and size as shown on parts list.

(463—Top Flite Red)

When ordering parts if color or finish is important, use color code shown at left.(e.g. Top Flite Red Finish—12131 (463).)

NOTE: The engine is not under warranty by the mower manufacturer . . . If repairs or service is needed on the engine, please contact your nearest authorized engine service outlet. Check the "Yellow Pages" of your telephone book under "Engines—Gasoline."

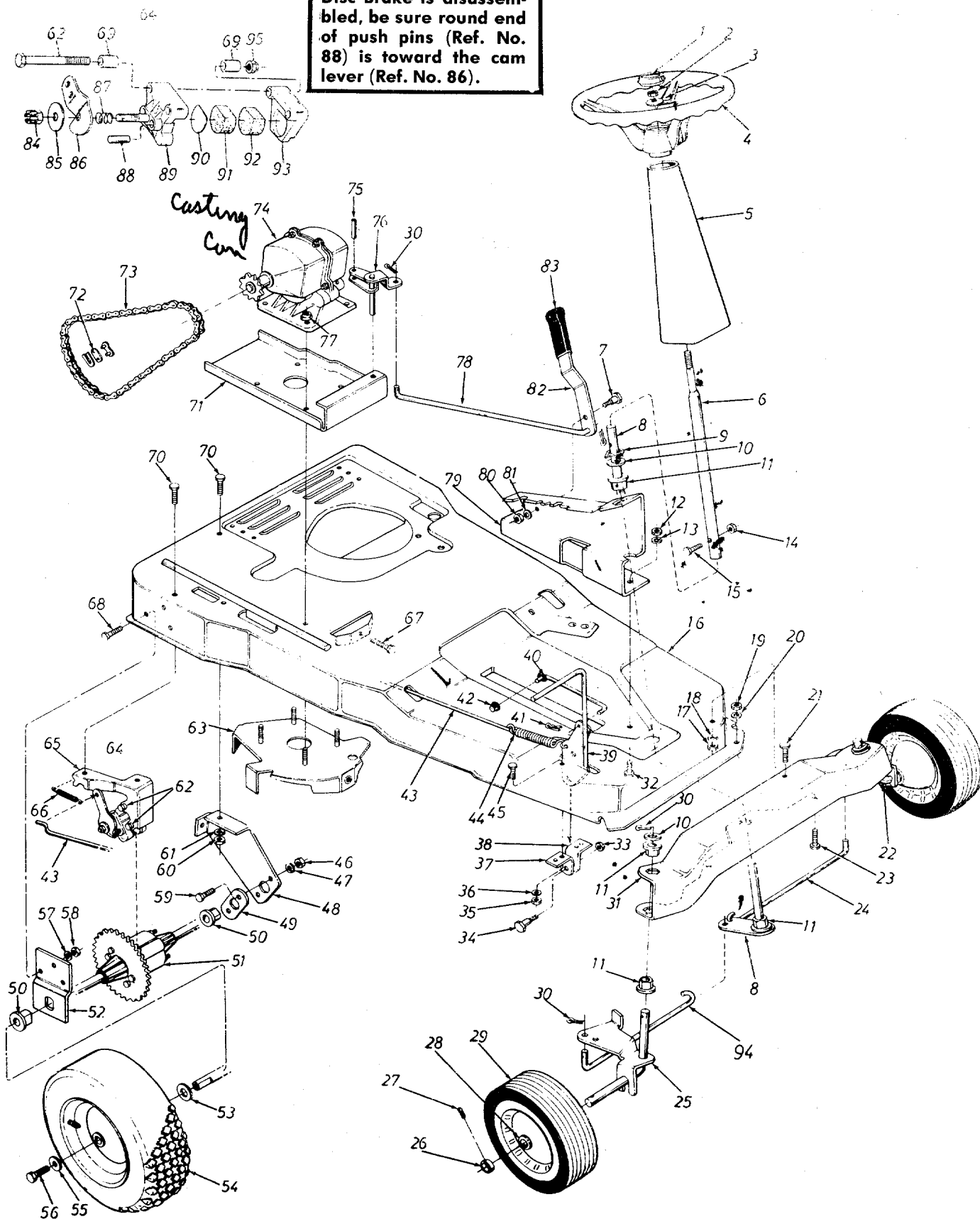


NOTE

This instruction manual covers various models and all specifications shown do not necessarily apply to your model. Specifications subject to change without notice or obligation.

138-402A

NOTE: If for any reason Disc Brake is disassembled, be sure round end of push pins (Ref. No. 88) is toward the cam lever (Ref. No. 86).



PARTS LIST FOR FRAME VIEW MODEL 138-402A

REF. NO.	PART NO.	COLOR CODE	DESCRIPTION	NEW PART	REF. NO.	PART NO.	COLOR CODE	DESCRIPTION	NEW PART
1	731-0220		Steering Wheel Cap		48	12147		Rear Axle Support Brkt.	
2	712-0158		Hex Cent. L-Nut 5/16-18 Thd.		49	10470		Bearing—Plate	
3	736-0242		Belleville Wash.		50	741-0199		Fling. Brg. w/Flats .751 I.D.	
4	731-0219		Steering Wheel Ass'y.		51	717-0328		Differential Ass'y.—Comp.	
5	731-0262		Cover—Steering Column		52	12148		Axle Brkt.	
6	750-0233		Steering Tube Ass'y.		53	736-0134		Fl-Wash. .812 I.D. x 1.38	
7	738-0140		Shld. Scr. .437 Dia. x .180" Lg.		54	734-0522		O.D. Wheel Ass'y—Comp. Rear	
8	12138		Steering Shaft Ass'y.		55	736-0105		12.2 x 3.7	
9	712-0222		Push Speed Nut .62 Dia.		56	710-0627		Belleville Wash. .400 I.D. x	
10	736-0156		Fl-Wash. .635 I.D. x 1.120		57	736-0119		.88 O.D.	
11	748-0227		Hex Flange Brg. .630 I.D.		58	712-0267		Hex Scr. 5/16-24 x .75" Lg.	
12	712-0267		Hex Nut 5/16-18 Thd. *		59	710-0198		L-Wash. 5/16" Scr. *	
13	736-0119		L-Wash. 5/16" Scr. *		60	712-0267		Hex Nut 5/16-18 Thd. *	
14	712-0107		Hex Cent. L-Nut 1/4-20 Thd.		61	736-0119		Hex Sems Scr. 5/16-18 x	
15	710-0428		Hex Scr. 1/4-28 x 1.25" Lg. *		62	710-0395		.75" Lg. *	
16	12125		Main Frame		63	09780		Hex Nut 5/16-18 Thd. *	
17	712-0267		Hex Nut 5/16-18 Thd. *		64	761-0130		L-Wash. 5/16" Scr. *	
18	736-0119		L-Wash. 5/16" Scr. *		65	12145		Hex Scr. 5/16-18 x 2.25" Lg. *	
19	712-0267		Hex Nut 5/16-18 Thd. *		66	732-0118		Belt Guard Ass'y.—Trans.	
20	736-0119		L-Wash. 5/16" Scr. *		67	710-0117		Disc Brake Ass'y.	
21	710-0198		Hex Sems Scr. 5/16-18 x .75" Lg. *		68	710-0198		Brake Brkt. Ass'y.	
22	09709		Axle Ass'y.—Front—L.H.		69	761-0133		Ext. Spring	
23	710-0198		Hex Sems Scr. 5/16-18 x .75" Lg. *		70	710-0198		Hex Scr. 5/16-24 x 1.00" Lg.	
24	747-0147		Tie Rod 3/8" Dia. L.H.		71	10247		H.T.	
25	09706		Axle Ass'y.—Front—R.H.		72	713-0723		Hex Sems Scr. 5/16-18 x .75" Lg. *	
26	711-0169		Collar		73	713-0190		Spacer for Disc Brake	
27	710-0666		Sq. Hd. Set Scr. 5/16-18 x .38 Cup		74	717-0223		Hex Sems Scr. 5/16-18 x .75" Lg. *	
28	748-0146		Flange Brg. w/Flats .630 I.D.		75	715-0103		Transmission Plate	
29	734-0510		Wheel Ass'y.—Front 10.25 x 3.25		76	12170		#41 Master Link 1/2" Pitch	
30	714-0507		Cotter Pin 3/32" Dia. x .75" Lg. *		77	712-0429		Type II	
31	12151		Front Wheel Brkt.		78	747-0136		#41 Chain 1/2" Pitch x 71 Links	
32	710-0198		Hex Sems Scr. 5/16-18 x .75" Lg. *		79	12150		Single Spd. Trans.—Comp.	
33	712-0375		Hex Cent. L-Nut 3/8-16 Thd.		80	712-0267		Spring Pin Roll 1/8" x .75" Lg.	
34	738-0234		Shld. Scr. .500" Dia. x .295" Lg.		81	736-0119		Shift Brkt. Ass'y.	
35	712-0267		Hex Nut 5/16-18 Thd. *		82	12169		Hex Ins. L-Nut 5/16-18 Thd.	
36	736-0119		L-Wash. 5/16" Scr. *		83	720-0142		Shift Rod	
37	12155		Pedal Pivot Brkt. w/1/2" Hole		84	712-0134		Index and Support Brkt.	
38	12156		Pedal Pivot Brkt. w/3/8" Hole		85	HH-03-03032		Hex Nut 5/16-18 Thd. *	
39	12136		Brake Pedal Ass'y.		86	HH-18-03493		L-Wash. 5/16" Scr. *	
40	12419		Pedal Lockout Rod 5/16" Rod		87	HH-06-03031		Shift Lever	
41	714-0104		Int. Cotter Pin 5/16" Dia. *		88	HH-05-03034		Grip—Flat Bar Type	
42	726-0109		Push Cap—.312 I.D.		89	HH-12-03292		Hex Top L-Nut 5/16-24 Thd.	
43	747-0128		Brake Rod 1/4" Dia. x 25.25" Lg.		90	HH-03-03303		Wash. .349 I.D. x 1.004 O.D. x .066 Thk.	
44	732-0245		Brake Spring		91	HH-15-02124		Cam Lever 22°	
45	710-0198		Hex Sems Scr. 5/16-18 x .75 Lg. *		92	HH-15-03149		Spring—Compres. .350" Dia. x 4 Coils	
46	712-0267		Hex Nut 5/16-18 Thd. *		93	HH-12-03293		Push Pin .309" Dia. x .857" Lg.	
47	736-0119		L-Wash. 5/16" Scr. *		94	747-0146		Castings—Cam	
					95	712-0158		Back-up Wash. 1.115" Dia. x .08 Thk. (D-Shaped)	
								Pad—Friction (D-Shaped)	
								1.110" Dia. x .472 Thk.	
								Pad Friction (D-Shaped)	
								1.110" Dia. x .245 Thk.	
								Castings—Carrier	
								Tie Rod 3/8" Dia.—R.H.	
								Hex Cent. L-Nut 5/16-18 Thd.	

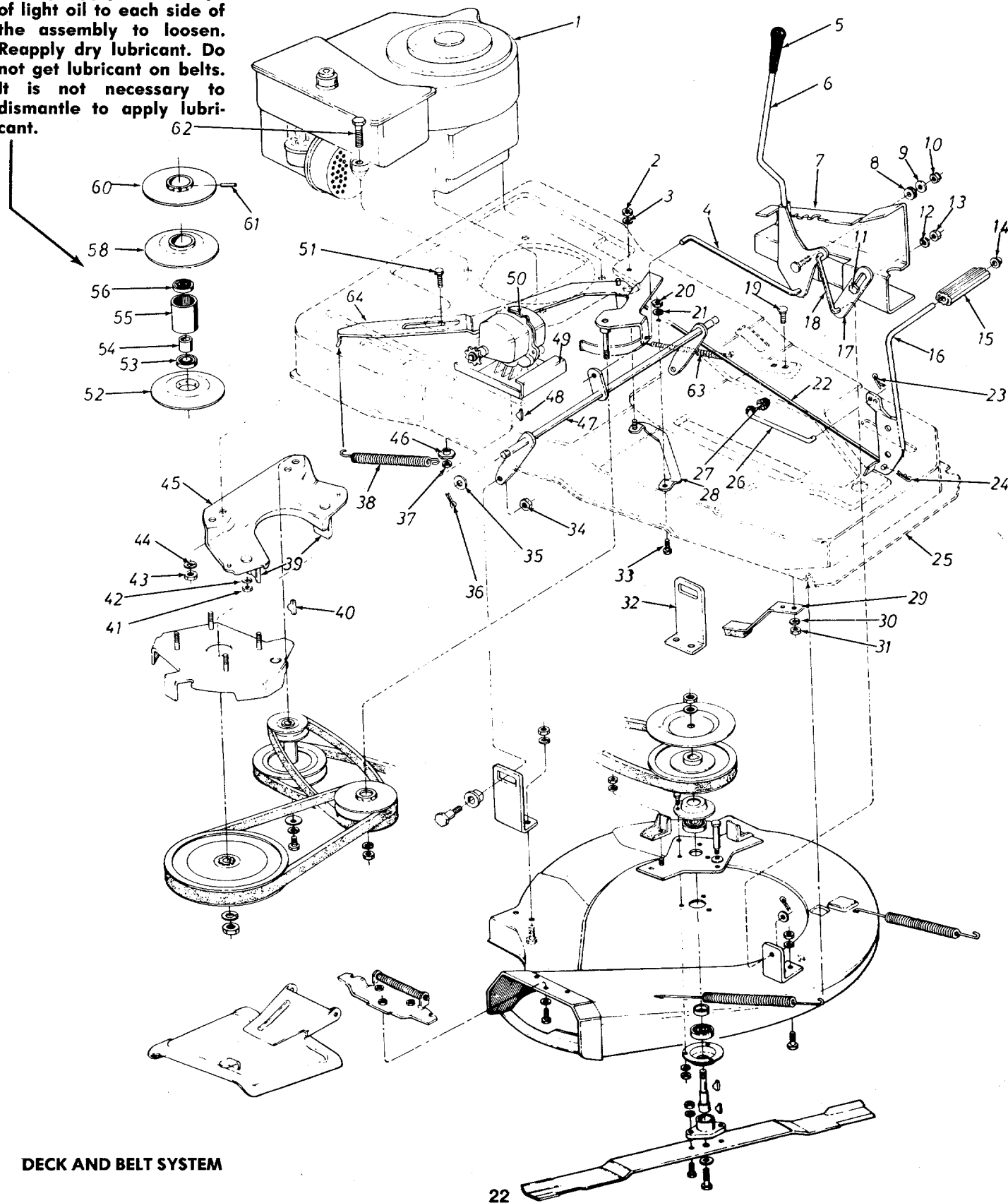
(463—Top Flite Red)

When ordering parts, if color or finish is important use the appropriate color code shown above (e.g. Top Flite Red Finish—12131 (463).)

*For faster service obtain standard nuts, bolts and washers locally. If these items cannot be obtained locally, order by part number and size as shown on parts list.

138-402A

NOTE: If mower fails to respond to speed control lever, it is possible that the variable speed pulley is seizing. Apply a few drops of light oil to each side of the assembly to loosen. Reapply dry lubricant. Do not get lubricant on belts. It is not necessary to dismantle to apply lubricant.



DECK AND BELT SYSTEM

PARTS LIST FOR DECK AND BELT SYSTEM MODEL 138-402A

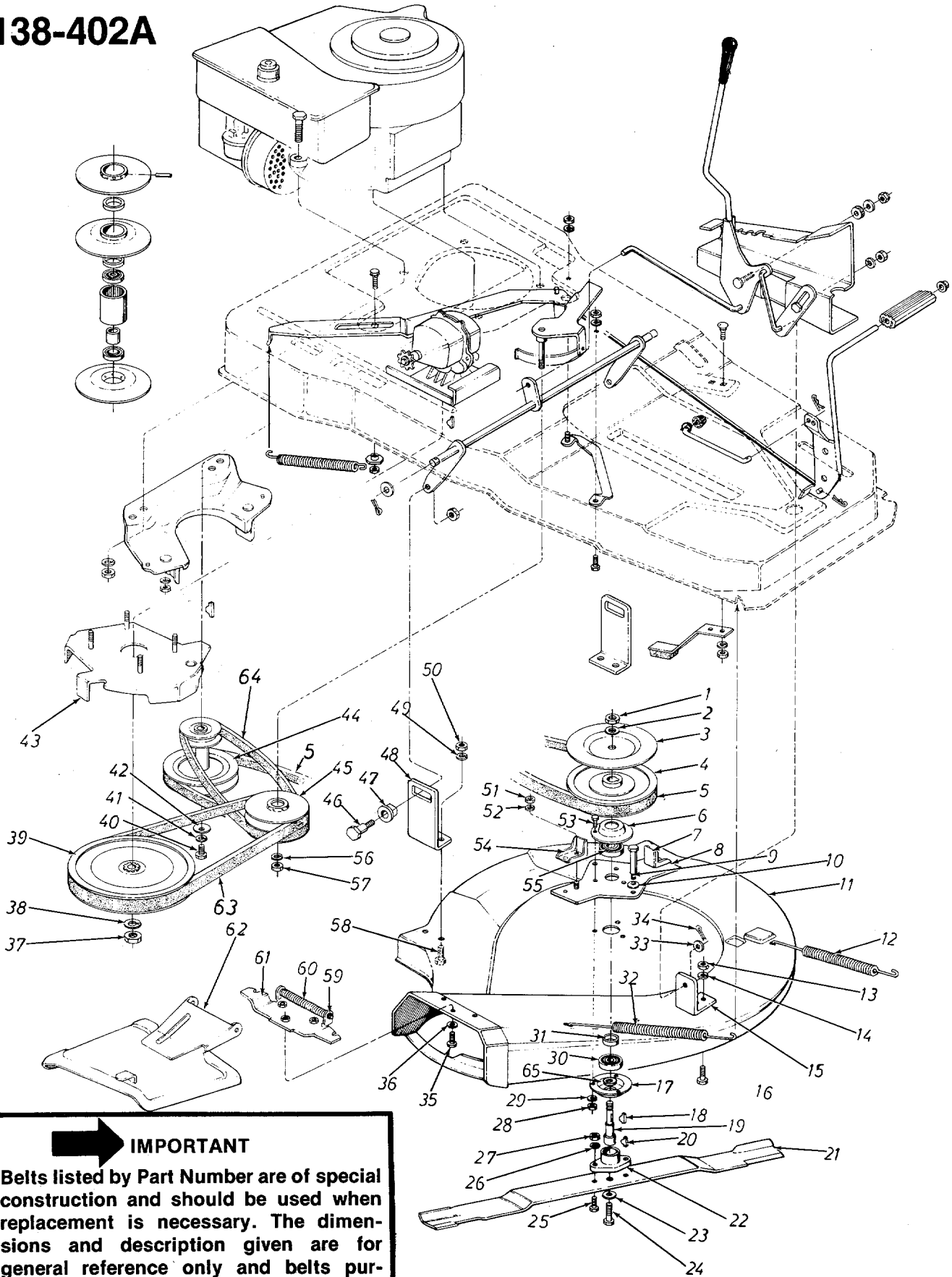
REF. NO.	PART NO.	COLOR CODE	DESCRIPTION	NEW PART	REF. NO.	PART NO.	COLOR CODE	DESCRIPTION	NEW PART
1	—		Engine		33	710-0198		Hex Sems Scr. 5/16-18 x .75" Lg.*	
2	712-0798		Hex Nut 3/8-16 Thd.*					Hex Cent. L-Nut 5/16-18 Thd.	
3	736-0217		L-Wash. 3/8" Scr. H.D.		34	712-0158		FI-Wash. .635 I.D. x .93 O.D.	
4	747-0125		Lift Handle Rod 3/8" Dia.		35	736-0116		Cot. Pin 3/32 Dia. x .75" Lg.*	
5	720-0143		Grip		36	714-0507		Hex Ins. L-Nut 5/16-18 Thd.	
6	12142		Deck Lift Handle Ass'y.		37	712-0429		Spring—Variable Speed	
7	12150		Index and Support Brkt.		38	732-0192		Belt Keeper Ass'y.	
8	735-0126		Rubber Washer		39	12160		#6 Hi-Pro-Key 5/32 x 5/8" Dia.	
9	736-0101		FI-Wash. .406 I.D. x 1.00 O.D. x .030		40	714-0365		Hex Nut 5/16-18 Thd.*	
10	712-0116		Hex L-Nut 3/8-24 Thd.		41	712-0267		L-Wash. 5/16" Scr.*	
11	738-0183		Shoulder Scr.		42	736-0119		Hex Nut 5/16-18 Thd.*	
12	736-0217		L-Wash. 3/8" Scr. H.D.		43	712-0267		L-Wash. 5/16" Scr.*	
13	712-0798		Hex Nut 3/8-16 Thd.*		44	736-0119		Belt Guard—Cup Ass'y.	
14	726-0221		Push Cap 1/2" I.D.		45	10423		Shoulder Nut	
15	731-0142		Foot Pedal Bar		46	711-0404		Deck Lift Shaft Ass'y.	
16	12133		Clutch Pedal Ass'y.		47	12139		#4 Hi-Pro-Key 3/32 x 5/8" Dia.	
17	12152		Deck Hanger Link		48	714-0129		Transmission Plate	
18	747-0127		Deck Lift Rod 3/8" Dia.		49	10247		Trans. Ass'y.—Comp.	
19	710-0167		Carriage Bolt 1/4-20 x .50" Lg.*		50	717-0223		Hex Sems Scr. 5/16-18 x 1.00" Lg.*	
20	712-0267		Hex Nut 5/16-18 Thd.*		51	710-0322		(Not replaceable in service)	
21	736-0119		L-Wash. 5/16" Scr.*		52			Ball Brg. .50 I.D. x 1.38 O.D.	
22	747-0133		Clutch Rod		53	741-0139		Spacer .520 I.D. x .692 O.D.	
23	714-0104		Hair Pin Cotter		54	750-0146		(Not replaceable in service)	
24	714-0104		Hair Pin Cotter		55			Ball Brg. .50 I.D. x 1.30 O.D.	
25	12125		Main Frame		56	741-0139		Moveable Sheave Ass'y.	
26	12419		Pedal Lockout Rod 5/16"		58	748-0181		(Not replaceable in service)	
27	726-0109		Push Cap—.312 I.D.		60			Spring Pin Spir. 5/32" Dia. x .62" Lg.	
28	10173		Bracket Guide Ass'y.		61	715-0124		Hex Scr. 5/16-18 x 1.50" Lg.*	
29	761-0148		Blade Brake Ass'y. 1.38 Height		62	710-0442		Extension Spring	
30	736-0329		L-Wash. 1/4" Scr.*		63	732-0233		Vari. Spd. Brkt. Ass'y.	
31	712-0287		Hex Nut 1/4-20 Thd.*		64	09785			
32	12154		Rear Deck Brkt.						

*For faster service obtain standard nuts, bolts and washers locally. If these items cannot be obtained locally, order by part number and size as shown on parts list.

(463—Top Flite Red)

When ordering parts if color or finish is important, use color code shown at left. (e.g. Top Flite Red Finish—12131 (463).)

138-402A



➔ IMPORTANT
Belts listed by Part Number are of special construction and should be used when replacement is necessary. The dimensions and description given are for general reference only and belts purchased by description and dimension generally will only provide temporary service.

DECK AND BELT SYSTEM

PARTS LIST FOR DECK AND BELT SYSTEM MODEL 138-402A

REF. NO.	PART NO.	COLOR CODE	DESCRIPTION	NEW PART	REF. NO.	PART NO.	COLOR CODE	DESCRIPTION	NEW PART
1	712-0261		Hex Cent. L-Nut 5/8-11 Thd.		33	736-0185		FI-Wash. .406 I.D. x .734 O.D. x .063	
2	736-0158		FI-Wash. 5/8" Scr. *						
3	11073		Brake Disc		34	714-0507		Cot. Pin 3/32" Dia. x .75" Lg.	
4	756-0143		Split Pulley .63 I.D.		35	710-0195		Hex Scr. 1/4-28 x .62" Lg. *	
5	754-0188		V-Belt 21/32 x 51" Lg.		36	736-0329		L-Wash. 1/4" Scr. *	
6	08253		Housing—Bearing		37	712-0922		Hex Jam Nut 1/2-20 Thd. *	
7	12172		Belt Keeper Ass'y.		38	736-0921		L-Wash. 1/2" Scr. *	
8	11537		Belt Guard Plate Ass'y.		39	756-0174		Transmission Pulley .500 I.D.	
9	738-0129		Shld. Scr. .498 Dia. x 2.005		40	710-0151		Hex Scr. 3/8-24 x 2.00" Lg. *	
10	736-0105		Belleville Wash. .400 I.D. x .88 O.D.		41	736-0217		L-Wash. 3/8" Scr. H.D.	
					42	711-0572		Step Washer	
11	12157		26" Deck Ass'y.		43	09780		Trans. Belt Guard Ass'y.	
12	732-0153		Spring .75 O.D. x 8.65" Lg.		44	756-0208		Two-Step Engine Pulley	
13	712-0267		Hex Nut 5/16-18 Thd. *		45	10438		Vari. Spd. Pulley Ass'y.	
14	736-0119		L-Wash. 5/16" Scr. *			12168		Vari. Spd. Pulley and Brkt. Ass'y.—Comp.	
15	12153		Front Deck Brkt.						
16	710-0198		Hex Sems Scr. 5/16-18 x .75" Lg. *		46	738-0141		Shld. Scr. .437 Dia. x .350	
					47	748-0180		Pivot Slide	
17	08253		Housing—Bearing		48	12154		Rear Deck Brkt.	
18	714-0388		#61 Hi-Pro-Key 3/16 x 5/8" Dia.		49	736-0119		L-Wash. 5/16" Scr. *	
					50	712-0267		Hex Nut 5/16-18 Thd. *	
19	711-0405		Blade Spindle		51	712-0267		Hex Nut 5/16-18 Thd. *	
20	714-0365		#6 Hi-Pro-Key 5/32 x 5/8 Dia.		52	736-0119		L-Wash. 5/16" Scr. *	
21	742-0147		26" Blade		53	710-0322		Hex Sems Scr. 5/16-18 x 1.00" Lg. *	
22	10769		Blade Adapter Kit						
23	736-0217		L-Wash. 3/8" Scr. H.D.		54	11823		Belt Keeper Ass'y.	
24	710-0459		Hex Scr. 3/8-24 x 1.50" Lg. H.T.		55	741-0919		Ball Bearing	
					56	736-0921		L-Wash. 1/2" Scr. *	
25	710-0117		Hex Scr. 5/16-24 x 1.00" Lg. H.T.		57	712-0384		Hex Cent. L-Nut 1/2-13 Thd.	
					58	710-0198		Hex Sems Scr. 5/16-18 x .75" Lg. *	
26	736-0119		L-Wash. 5/16" Scr. *						
27	712-0123		Hex Nut 5/16-24 Thd. *		59	726-0106		Push Cap 1/4" Dia.	
28	712-0267		Hex Nut 5/16-18 Thd. *		60	732-0261		Torsion Spring	
29	736-0119		L-Wash. 5/16" Scr. *		61	11399		Adapter Ass'y.	
30	741-0919		Ball Bearing		62	11634		Chute Cover Ass'y.—Comp.	
31	750-0142		Spacer		63	754-0136		V-Belt 21/32 x 31" Lg.	
32	732-0153		Spring .75 O.D. x 8.65" Lg.		64	754-0187		V-Belt 21/32 x 24" Lg.	
					65	736-0287		FI-Wash. .749 I.D. x 1.24 O.D. x .060	

*For faster service obtain standard nuts, bolts and washers locally. If these items cannot be obtained locally, order by part number and size as shown on parts list.

(463—Top Flite Red)

When ordering parts if color or finish is important, use color code shown at Red Finish—12131 (463.)

(e.g. Top Flite

PARTS INFORMATION

POWER EQUIPMENT PARTS AND SERVICE

Parts and service for all MTD manufactured power equipment are available through the authorized service firms listed below. All orders should specify the model number of your unit, parts number, description of parts and the quantity of each part required.

ALABAMA	BIRMINGHAM	
Auto Electric & Carburetor Co.	2625 4th Ave. S.	35233
ARKANSAS	NORTH LITTLE ROCK	
Sutton's Lawn Mower Shop	Rt. 4, Box 368	72117
	FORT SMITH	
Mity Mite Motors, Inc.	2515 Towson Ave.	72901
CALIFORNIA	PORTERVILLE	
Billious	75 North D Street	93257
	SAN BERNARDINO	
Lawn Mower Supply Co.	25608 E. Baseline	92410
	SAN FRANCISCO	
J.W. Jewett Co.	981 Folsom St.	94107
	SACRAMENTO	
Luttig & Severson	2030 28th St.	95818
COLORADO	DENVER	
South Denver Lawn Equip.	527 West Evans	80223
CONNECTICUT	SUFFIELD	
The Jones & Ramsey Co.	850 Thompsonville Rd.	06078
FLORIDA	JACKSONVILLE	
Radco Distributors	2403 Market St.	32206
	CORAL GABLES	
Moz-All of Florida, Inc.	365 Greco Ave.	33146
GEORGIA	EAST POINT	
East Point Cycle & Key	2834 Church St.	30344
ILLINOIS	LYONS	
Keen Edge Co.	8615 Ogden Ave.	60534
INDIANA	ELKHART	
Parts & Sales Inc.	2101 Industrial Pkwy.	46514
IOWA	DUBUQUE	
Power Lawn & Garden Equip.	2551 J.F. Kennedy	52001
LOUISIANA	NEW ORLEANS	
Suhren Engine Co.	8330 Earhart Blvd.	70118
MARYLAND	TAKOMA PARK	
Center Supply Co.	6867 New Hampshire Ave.	20012
MASSACHUSETTS	SPRINGFIELD	
Morton B. Collins Co.	300 Birnie Ave.	01107
MICHIGAN	MOUNT CLEMENS	
Power Equipment Dist.	36463 South Gratiot	48043
	LANSING	
Lorenz Service Co.	2500 S. Pennsylvania	48900
MINNESOTA	MINNETONKA	
Hance Distributing Inc.	11212 Wayzata Blvd.	55343
MISSISSIPPI	BILOXI	
Biloxi Sales & Service, Inc.	506 Caillavet St.	39533
MISSOURI	KANSAS CITY	
Automotive Equip. Service	3117 Holmes St.	64109
	ST. LOUIS	
Henzler, Inc.	2015 Lemay Ferry Rd.	63125
NEW JERSEY	BELLMAWR	
Lawnmower Parts Inc.	717 Creek Rd., P.O. Box 7	08030

BRIGGS & STRATTON, TECUMSEH AND PEERLESS PARTS AND SERVICE

Briggs & Stratton, Tecumseh and Peerless parts and service should be handled by your nearest authorized engine service firm. Check the yellow pages of your telephone directory under the listing **Engines—Gasoline**, Briggs & Stratton or Tecumseh Lauson.

NEW YORK	CARTHAGE	
Gamble Dist., Inc.	West End Ave.	13619
NORTH CAROLINA	GREENSBORO	
Dixie Sales Company	327 Battleground Ave.	27402
	GOLDSBORO	
Smith Hardware Co.	515 N. George St.	27530
OHIO	WADSWORTH	
National Central	687 Seville Rd.	44281
	CLEVELAND	
Bleckrie, Inc.	7900 Lorain Ave.	44102
	CARROLL	
Stebe's Mid-State Mower Supply	Box 366	43112
	WILLARD	
Sunshine Wholesale Tire Outlet	Route 224	44890
OKLAHOMA	MUSKOGEE	
Victory Motors, Inc.	605 S. Cherokee	74401
	ADA	
Ada Auto Supply	301 E. 12th St.	74820
OREGON	PORTLAND	
Kenton Supply Co.	8216 N. Denver Ave.	97217
PENNSYLVANIA	LANCASTER	
Raub Supply Co.	James & Mulberry Sts.	17604
	PITTSBURGH	
Bluemont Co.	11125 Frankstown Rd.	15235
TENNESSEE	KNOXVILLE	
Master Repair Service	2423 Broadway, N.E.	37917
	MEMPHIS	
Memphis Cycle & Supply Co.	421 Monroe Ave.	38103
American Sales & Service, Inc.	1922 Lynnbrook	3811f
TEXAS	DALLAS	
Marr Brothers, Inc.	423 E. Jefferson	75203
	HOUSTON	
Bullard Supply Co.	2409 Commerce St.	77003
	SAN ANTONIO	
Catto & Putty, Inc.	P.O. Box 2408	78206
	FORT WORTH	
Woodson Sales Corp.	1702 N. Sylvania	76111
UTAH	SALT LAKE CITY	
A-1 Engine & Mower Co.	437 E. 9th St.	84111
VERMONT	BURLINGTON	
Vermont Appliance Co.	44 Lakeside Ave.	05401
VIRGINIA	RICHMOND	
RBI Corp.	963 Myers St.	23260
WASHINGTON	SEATTLE	
Bailey's Rebuild, Inc.	1325 E. Madison St.	98102
WEST VIRGINIA	CHARLESTON	
Young's, Inc.	233 Virginia St., E.	25301
WISCONSIN	APPLETON	
Automotive Supply Co.	123 S. Linwood Ave.	54911

WARRANTY PARTS AND SERVICE POLICY

The purpose of warranty is to protect the customer from defects in workmanship and materials, defects which are NOT detected at the time of manufacture. It does not provide for the unlimited and unrestricted replacement of parts. Use and maintenance are the responsibility of the customer. The manufacturer cannot assume responsibility for conditions which it has no control. Simply put, if it's the manufacturer's fault, it's the manufacturer's responsibility; if it's the customer's fault, it's the customer's responsibility.

CLAIMS AGAINST THE MANUFACTURER'S WARRANTY INCLUDES

1. Replacement of Missing Parts on new equipment.
2. Replacement of Defective Parts within the warranty period.
3. Repair of Defects within the warranty period.

All claims MUST be substantiated with the following information:

1. Model Number of unit involved.
2. Date unit was purchased or first put into service.
3. Date of failure.
4. Nature of failure.