

OWNER'S MANUAL

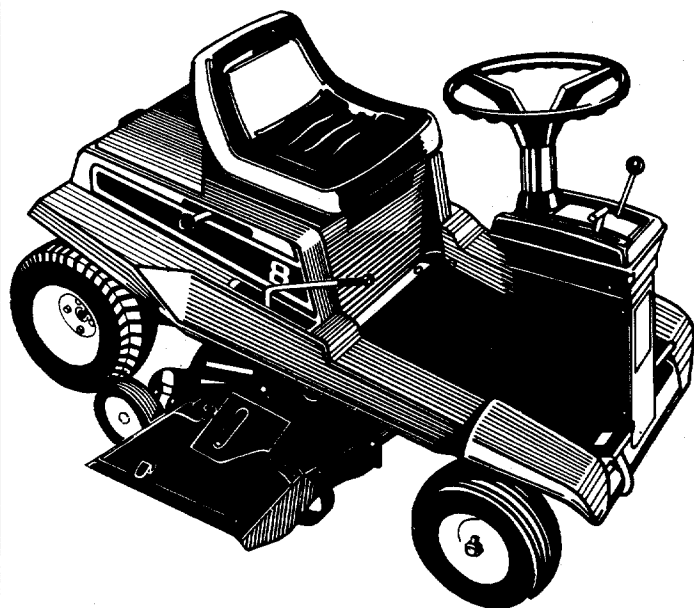
- ASSEMBLY
- OPERATION
- MAINTENANCE
- PARTS LIST

Model Nos.
137-430A
137-435A
137-430-300
137-435-300

Important:

Read Safety Rules and
Instructions Carefully

30"
RIDING
MOWERS



IMPORTANT

It is suggested that this manual be read in its entirety before attempting to assemble or operate. Keep this manual in a safe place for future reference and for ordering replacement parts.

This unit is shipped WITHOUT GASOLINE or OIL. After assembly, see operating section of this manual for proper fuel and amount.

Your rotary mower is a precision piece of power equipment, not a plaything. Therefore exercise extreme caution at all times.

SAFE OPERATION PRACTICES FOR RIDING VEHICLES

1. Know the controls and how to stop quickly—**READ THE OWNER'S MANUAL.**
2. Do not allow children to operate vehicle. Do not allow adults to operate it without proper instruction. Only persons well acquainted with these rules of safe operation should be allowed to use your mower.
3. Do not carry passengers.
4. Keep the area of operation clear of all persons, particularly small children and pets. Stop engine when they are in the vicinity of your mower. Although the area of operation should be completely cleared of foreign objects, a small object may have been overlooked and could be accidentally thrown by the mower in any direction.
5. Clear work area of objects which might be picked up and thrown by the mower in any direction.
6. Disengage all attachment clutches and shift into neutral before attempting to start engine.
7. Disengage power to attachment(s) and stop engine before leaving operator position.
8. Disengage power to attachment(s) and stop engine before making any repairs or adjustments. Disconnect the spark plug wire and keep the wire away from the plug to prevent accidental starting.
9. Before attempting to unclog the mower or discharge chute, stop the engine and be sure the blade(s) have stopped completely. Disconnect the spark plug wire and keep the wire away from the plug to prevent accidental starting.
10. Disengage power to attachment(s) when transporting or not in use.
11. Take all possible precautions when leaving vehicle unattended such as disengaging power-take-off, lowering attachments, shifting into neutral, setting parking brake, stopping engine and removing key.
12. Do not stop or start suddenly when going uphill or downhill. Mow up and down face of steep slopes; never across the face.
13. Reduce speed on slopes and in sharp turns to prevent tipping or loss of control. Exercise extreme caution when changing direction on slopes.
14. Stay alert for holes in terrain and other hidden hazards.
15. Use care when pulling loads or using heavy equipment.
 - A. Use only approved drawbar hitch points.
 - B. Limit loads to those you can safely control.
 - C. Do not turn sharply. Use care when backing.
 - D. Use counterweight(s) or wheel weights when suggested in owner's manual.
16. Watch out for traffic when crossing or near roadways.
17. When using any attachments never direct discharge of material toward bystanders nor allow anyone near vehicle while in operation.
18. Handle gasoline with care—it is highly flammable.
 - A. Use approved gasoline container.
 - B. Never remove cap or add gasoline to a running or hot engine or fill fuel tank indoors. Wipe up spilled gasoline.
 - C. Open doors if engine is run in garage—exhaust fumes are dangerous. Do not run engine indoors.
19. Keep the vehicle and attachments in good operating condition, and keep safety devices in place. Use guards as instructed in owner's manual.
20. Keep all nuts, bolts, and screws tight to be sure the equipment is in safe working condition.
21. Never store the equipment with gasoline in the tank inside a building where fumes may reach an open flame or spark. Allow engine to cool before storing in any enclosure.
22. To reduce fire hazard keep engine free of grass, leaves or excessive grease.
23. The vehicle and attachments should be stopped and inspected for damage after striking a foreign object, and the damage should be repaired before restarting and operating the equipment.
24. Do not change the engine governor settings or overspeed the engine.
25. When using the vehicle with mower, proceed as follows:
 - (1) Mow only in daylight or in good artificial light.
 - (2) Never make a cutting height adjustment while engine is running if operator must dismount to do so.
 - (3) Shut the engine off and wait until the blade comes to a complete stop before removing the grass catcher.
 - (4) Check blade mounting bolts for proper tightness at frequent intervals.
26. Check grass catcher bags frequently for wear or deterioration. For safety protection replace only with new bag meeting original equipment specifications.
27. Look behind to make sure the area is clear before placing the transmission in reverse and backing up.

INDEX

Safe Operation Practices.....	2	Troubleshooting Chart Recoil Start.....	16
Index and Assembly Instructions.....	3	Troubleshooting Chart Electric Start.....	17
Activating the Battery.....	4	Illustrated Parts Rider.....	18
Battery Warranty.....	5	Parts List for Rider.....	19
Controls.....	6	Illustrated Parts Control Linkages.....	20
Operating Instructions.....	8	Parts List for Control Linkages.....	21
Maintenance and Adjustments.....	9	Illustrated Parts Frame.....	22
Belt Removal.....	10	Parts List for Frame.....	23
Lubrication.....	11	Illustrated Parts Deck and Belt System.....	24
Schematic for Recoil Start.....	12	Parts List for Deck and Belt System.....	25
Schematic for Electric Start.....	13	Battery Box Breakdown.....	26
Transmission Breakdown.....	14	Deck Linkage.....	27
Differential Breakdown.....	15	Parts Information.....	Back Cover

ASSEMBLY

GRASS CATCHER Model No. 197-015A is available as optional equipment for the mowers shown in this manual.



WARNING

1. The mower should not be operated without the entire grass catcher or chute deflector in place.



NOTE

Under normal usage bag material is subject to wear, and should be checked periodically. Be sure any replacement bag complies with the mower manufacturer's recommendations.

For replacement bags, use only factory authorized replacement bag No. 764-0121.



IMPORTANT

After striking a foreign object, stop the engine. Remove wire from spark plug, thoroughly inspect the mower for any damage, and repair the damage before restarting and operating the mower.



NOTE

Reference to right-hand or left-hand side of machine is from the driver's seat facing forward.

Your mower is shipped assembled except for the steering wheel and seat (and battery on the electric start model.)

TIRE PRESSURE

FOR SHIPPING PURPOSES, THE TIRES ON YOUR UNIT MAY BE OVER-INFLATED. TIRE PRESSURE SHOULD BE REDUCED BEFORE UNIT IS PUT INTO OPERATION. PRESSURE SHOULD BE APPROXIMATELY 15 P.S.I. EQUAL TIRE PRESSURE SHOULD BE MAINTAINED ON ALL TIRES. MAXIMUM TIRE PRESSURE IS 30 P.S.I.



CAUTION

Installation of tire to rim:

1. Lubricate tire beads and rim flanges.
2. Do not exceed 30 P.S.I. when seating beads.
3. Adjust to recommended pressure after beads are sealed.

STEERING WHEEL ASSEMBLY See figure 1.

- Step 1. Line up the hole in the steering column and the hole in the tubing assembly and drive in the roll pin with a hammer.



NOTE

It may be necessary to use a drift to line up the holes.

- Step 2. Slide the spacer over the tubing assembly until it lays flush against the steering box.
- Step 3. Place the steering wheel on the tubing shaft.
- Step 4. Secure in place with belleville washer and hex nut.
- Step 5. Put on steering wheel cap by hand.

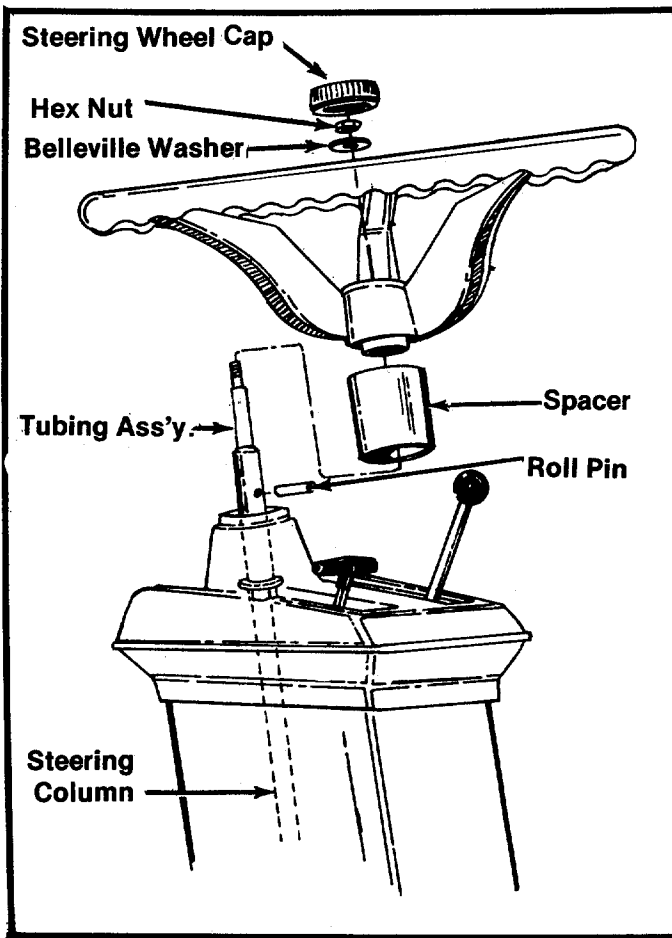


FIGURE 1. STEERING WHEEL ASSEMBLY

Step 6. Place the seat in desired hole on seat bracket. Secure with hex nut and lockwasher. See figure 2.

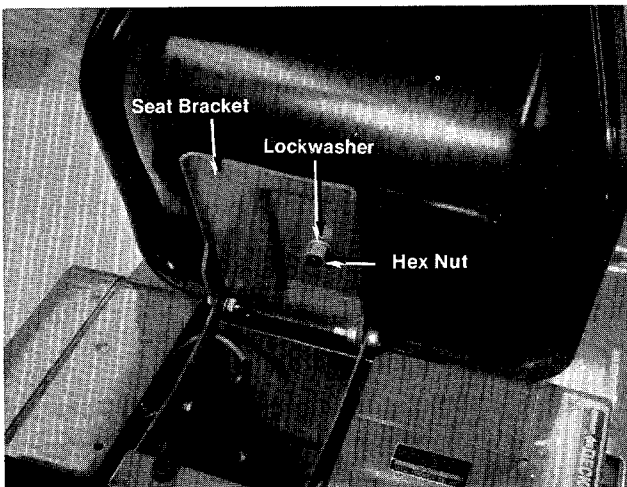


FIGURE 2. SEAT ASSEMBLY

Step 7. Check ALL nuts and bolts for correct tightness.

BATTERY INFORMATION

ELECTRIC START MODELS



WARNING

- A. Battery acid must be handled with great care as it will blister the skin and damage clothing. It is advisable to wear goggles, rubber gloves, and a protective apron when working with it.
- B. Neutralize acid spilled on clothing with dilute ammonia water or a water solution of baking soda. If acid gets on clothes, dilute it with clean water first, then neutralize.
- C. If for any reason acid should be splattered in the eyes, wash it out immediately with clean cold water. Seek medical aid if discomfort continues.
- D. Since battery acid is corrosive to metals, do not pour into any sink or drain. Rinse empty electrolyte containers and mutilate before discarding.



DANGER

BATTERIES CONTAIN SULFURIC ACID AND MAY CONTAIN EXPLOSIVE GASES (when electrolyte has been added)

- A. Keep sparks, flame, cigarettes away.
- B. Hydrogen gas is generated during charging and discharging.
- C. Ventilate when charging or using in enclosed space.
- D. When using a charger—to avoid sparks, NEVER connect or disconnect charger clips to battery while charger is turned on.
- E. Always shield eyes, protect skin and clothing when working near batteries.

A. Activating the Battery

1. Place battery to be filled on bench or workbench. NEVER activate battery in unit. Remove vent caps from all cells.
2. Fill each cell carefully using battery grade 1.250-1.265 specific gravity. Sulfuric acid to be 3/8" above the top of the separators or to the split ring.
3. Allow battery to set for 20 minutes to 1/2 hour. Add additional acid if necessary to bring it up to the proper level.
4. Replace the vent caps.

- The battery can now be charged after the 20 minutes setting period. Battery can be SLOW CHARGED (DO NOT FAST CHARGE) at a maximum bench rate of 4-5 amperes until the specific gravity reading is 1.265-1.275. A charging rate in excess of this will buckle and warp the positive plates and perforate the separators. If electrolyte bubbles violently while charging, reduce charging rate until excessive bubbling action subsides, then continue charging until specific gravity is reached.



CAUTION

After the battery has been in service, add only approved water. DO NOT ADD ACID.

B. To Install Battery

To install the battery in this unit, refer to next column.

C. Maintenance

- Check periodically (every two weeks or before and after charging) to be sure electrolyte level is 9/16" above separator plates. Add only distilled water or good quality drinking water. NEVER add additional acid or other chemicals to battery after initial activation.
- The battery should be checked with a hydrometer after every 25 hours of operation. If the specific gravity is less than 1.225 remove battery and recharge.
- Coat the terminals and exposed wiring with a thin coat of grease or petroleum jelly for longer service and protection against electrolyte corrosion.
- The battery should be kept clean. Any deposits of acid should be neutralized with soda and water. Be careful not to get this solution in the cells.

D. Storage

- Charge battery using normal methods. NEVER store discharged battery as it will not recover.
- Store in cold, dry place.
- Recharge battery whenever the specific gravity is less than 1.225 before returning to service or every two months, whichever occurs first.

E. Common Causes For Battery Failure Are:

- Overcharging
- Undercharging
- Lack of water
- Loose hold downs and/or corroded connections
- Excessive loads
- Battery electrolyte substitutes
- Freezing of electrolyte



NOTE

THESE FAILURES DO NOT CONSTITUTE WARRANTY.

LIMITED WARRANTY

For ninety (90) days of original retail purchase, the battery carries a limited warranty against faulty material or workmanship by the battery manufacturer.

INSTALLING THE BATTERY (Electric Start Models Only)

See figure 3.

Step 1. Tip the seat bracket forward to expose the battery box.

Step 2. Remove screw (A) and lockwasher (B).

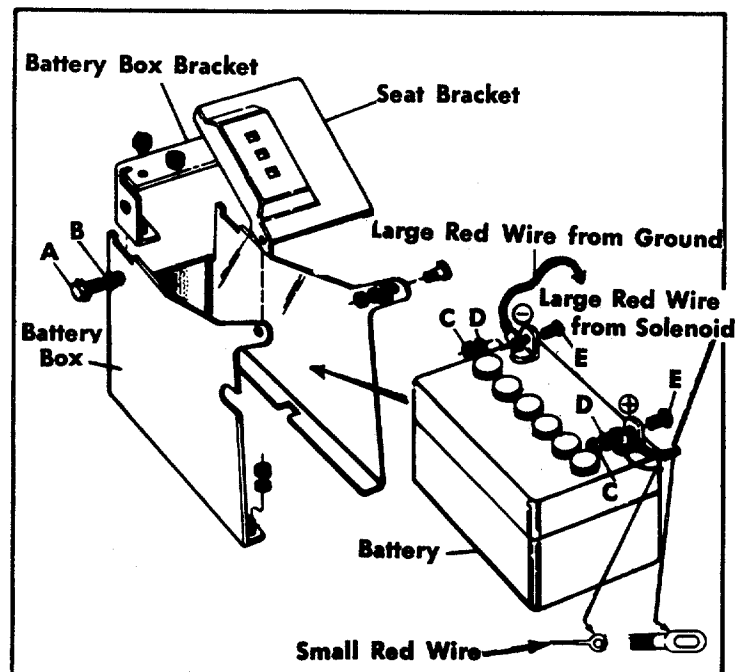


FIGURE 3. INSTALLING THE BATTERY

Step 3. Lift out the battery box bracket.

Step 4. Place the battery in the battery box with the positive terminal (+) to the front of the riding mower.

Step 5. Attach the large red wire from the solenoid and the small red wire to the positive (+) terminal of the battery with a 1/4" screw (E), washer (D) and nut (C).

Step 6. Attach the large red wire from the ground (-) to the negative (-) terminal of the battery with a 1/4" screw (E), washer (D) and nut (C).

Step 7. Replace the battery box bracket with screw (A) and washer (B). See figure 3.

CONTROLS See figure 5.

This manual should be read in its entirety before you operate your Riding Mower. The more you know and understand about the machine and its operation, the better job it will do for you. While reading the manual, compare the illustrations with your mower to familiarize yourself with the locations of various controls, lubrication points, attachments and adjustment features.

IGNITION KEY

Recoil Model. The key must be turned to the ON position before the recoil handle is pulled to start the engine. Remove the key when the mower is not in use. Turn the key to the left (to the OFF position) to stop the engine.

Electric Model. The key must be turned to the START position to start the engine. After the engine is running let the key return to the ON position. Remove the key when the mower is not in use. Turn the key to the OFF position to stop the engine.

Study the operating instructions and safety precautions thoroughly to insure proper functioning of your mower and to prevent injury to yourself and others. Be sure to save this manual for future reference.

LIFT AND DISENGAGEMENT LEVER

The lift and disengagement lever is used to raise and lower the cutting deck, set the cutting height, and disengage the cutting blades.

Move the lever to the left and pull the lever all the way back and lock it to disengage the blades. The lever may be set in any one of the five cutting height positions. This lever works in conjunction with the deck wheel adjusters.

THROTTLE CONTROL

The throttle control is used to regulate the engine speed and to activate the choke on the engine. To get the maximum efficiency on cutting, the throttle should be in the FAST position when operating the mower. Pushing the throttle all the way forward, past FAST will choke the engine.

INTERLOCKS (Not Shown)

An interlock safety switch is located on the clutch pedal and the lift and disengagement lever.

The clutch pedal must be depressed all the way down (the speed control handle can be pulled back to lock it down) and the lift and disengagement lever must be in the STOP position (all the way back) before the engine can be started. Failure to follow these instructions will prevent starting.

On the recoil start model, the ignition will be grounded. On the electric start model, the starter will not run.

GEAR SHIFT LEVER

The gear shift lever has three positions, FORWARD, NEUTRAL and REVERSE. The clutch pedal must be depressed and the riding mower must not be moving when shifting gears. Shifting gears may be difficult when the speed control handle is all the way back. Do not force the shift lever. Release the clutch pedal slightly to line up the shifting collar in the transmission. Then try to shift the gears.

BRAKE

To operate the brake depress the right pedal all the way down. To lock the brake in the park position, pivot the pedal forward with your foot as you depress it. It will stay in the depressed position. To release the parking brake, pivot the pedal to the rear.

DECK WHEEL ADJUSTERS

Always set both deck wheels in the same relative position. Set these wheels after the Lift and Disengagement Lever is set. The wheels should just clear the ground. This will prevent scalping the grass.

CLUTCH PEDAL

The clutch pedal on the left side when depressed reduces the ground speed. It disengages the engine from the transmission when depressed all the way down. It can be held in the disengaged position by pulling the Speed Control Lever into the locked position (all the way back). To stop the mower, depress the Clutch and Brake Pedals.

SPEED CONTROL LEVER. See figures 4 and 5.

The Speed Control Lever can be used as a hand control for the clutch pedal. It is also used to lock the clutch pedal in the disengaged position by pulling it all the way back towards the operator and locked to the right.

The control lever allows you to regulate the maximum ground speed of the riding mower by setting the control lever in any one of four settings.

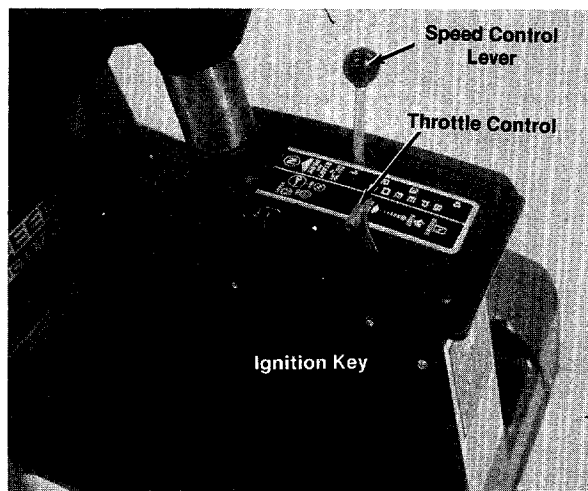


FIGURE 4. SPEED CONTROL LEVER



The further forward the control lever is set, the faster the ground speed.

STOPPING

Engine—Turn the ignition key to the left to the OFF position.

Rider—Depress the clutch and brake pedals.

Blades—Pull the lift and disengagement lever all the way back and lock it.

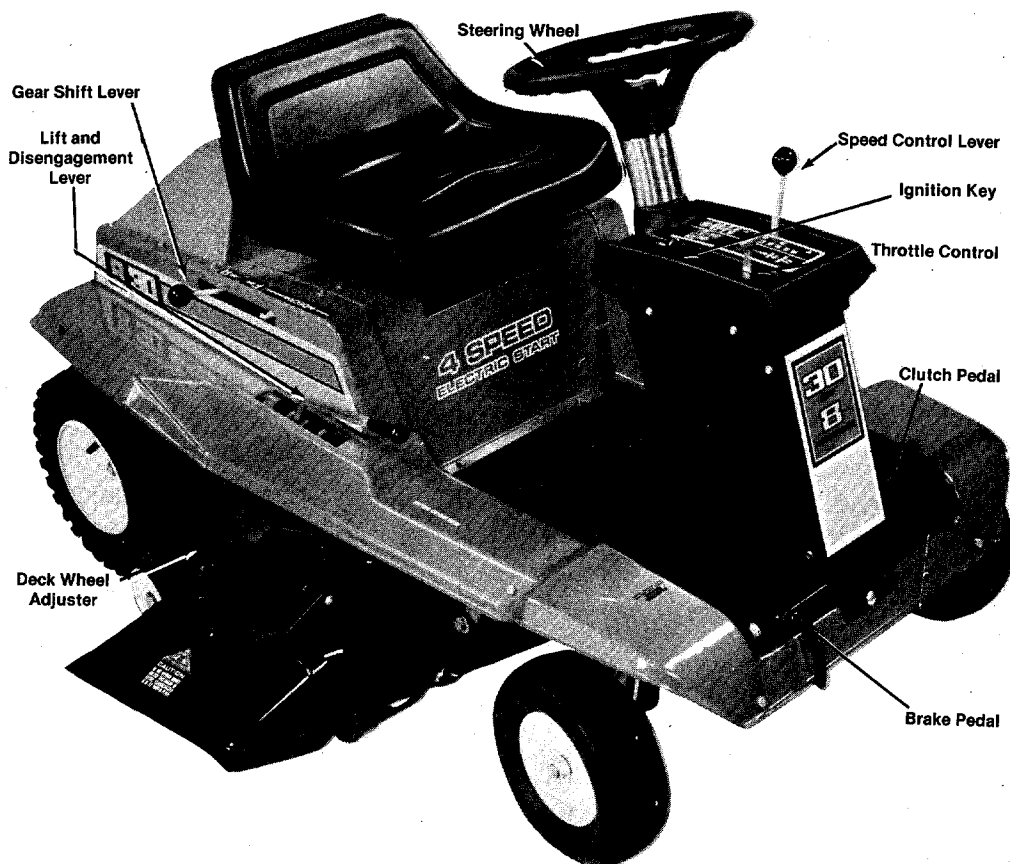


FIGURE 5.

OPERATING INSTRUCTIONS



CAUTION

1. Keep all shields and guards in place.
2. Before leaving operator's position:
 - Shift controls into neutral
 - Set parking brake
 - Disengage attachment drive
 - Shut off engine
 - Remove ignition key
3. Wait for all movement to stop before servicing machine.
4. Keep people and pets a safe distance away from machine.



CAUTION

Parking Brake **MUST** be disengaged before unit is put into motion.



NOTE

Unit is equipped with separate brake and clutch pedals. To efficiently stop, it is necessary to disengage the clutch when applying the brakes.

STARTING THE ENGINE

1. Be sure the crankcase is filled with oil as recommended in the engine manual. Put regular gasoline in the gasoline tank.
2. Be sure the fuel shut off valve located on the carburetor is open.
3. Attach the wire to the spark plug.
4. Depress the clutch pedal and lock it down with the speed control lever.
5. Pull the lift and disengagement lever all the way back to the disengaged position and lock it.
6. Set the throttle control lever in the CHOKE position.
7. **Recoil Model.** Turn the ignition key to the ON position. Twist the recoil starter handle until it is free and pull it with a quick steady motion. After the engine starts, return the recoil starter handle. Twist it until it locks. See figure 6.



NOTE

If these instructions are not followed the engine will stop running when you engage the clutch or blades are engaged.



FIGURE 6. RECOIL STARTER

Electric Start Model. Turn the ignition key to the START position. When the engine starts let the key return to the ON position.

Slowly return the throttle to the running position as soon as the engine starts.

8. To stop either model, turn the ignition key to the OFF position. Remove the key when the rider is not in use.

PUTTING THE RIDING MOWER IN MOTION

1. Advance the throttle control from $\frac{3}{4}$ to full throttle to prevent strain on the engine and to operate the cutting blades.
2. Set the stop lever in the slowest position.
3. Hold the clutch pedal down with your left foot and release the speed control lever.
4. Place the gear shift lever in either the FORWARD or REVERSE position.
5. Slowly release the clutch pedal.
6. To stop, depress the clutch and the brake pedals.
7. The blades can be engaged while moving or while standing still. Move the lift and disengagement lever forward slowly until the blades are running.

After learning to control the machine at slow speeds, set the stop lever in a faster position. The unit will maintain the highest speed set without touching the controls. To slow down, depress the clutch pedal until the speed desired is obtained. When the clutch pedal is released, the riding mower will operate at the highest speed set on the stop lever.

MAINTENANCE AND ADJUSTMENTS

THROTTLE CONTROL

To Check Operation:

1. Remove air cleaner.
2. Move throttle control lever to CHOKE position. The carburetor choke should be closed.
3. Move throttle control lever to STOP position. Lever should make good contact with stop switch.

To Adjust: See figure 7.

Place throttle control lever in FAST (high speed) position. Loosen control casing clamp screw "B". Move control casing "A" and wire until lever "D" touches choke operating link at "C". Tighten casing clamp screw "B". Replace air cleaner.

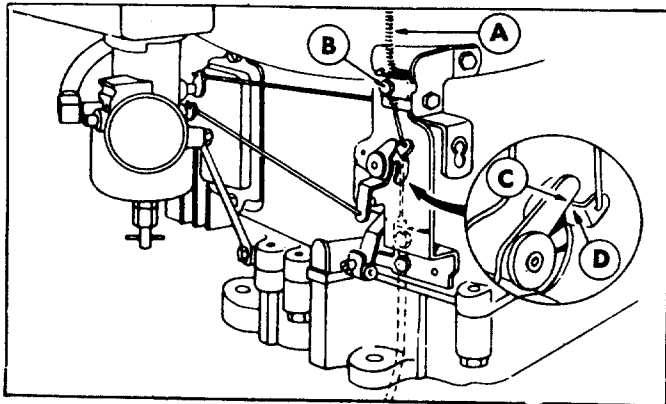


FIGURE 7. THROTTLE ADJUSTMENT

CARBURETOR ADJUSTMENT

Carburetors are adjusted at the factory and normally do not need adjustment unless they have been disassembled.

Initial Adjustment After Re-assembly. See figure 8.

Turn needle valve clockwise until it just closes.



Valve may be damaged by turning it too far. Now open needle valve 1-1/8 turns counterclockwise. Close idle valve in same manner and open 1-1/8 turns. This initial adjustment will permit the engine to be started and warmed up prior to final adjustment.

Final Adjustment. See figure 8.

Turn needle valve in until engine misses (lean mixture). Then turn it out past smooth operating point until engine runs unevenly (rich mixture). Now turn needle valve to the mid-point between rich and lean so the engine runs smoothly.

Hold throttle at idle position and set idle speed adjusting screw until fast idle is obtained (1750 RPM). Hold throttle in idle position and turn idle valve in (lean) and out (rich) until engine idles smoothly. Then reset idle speed adjusting screw so that engine idles at 1750 RPM. Release throttle—engine should accelerate without hesitation or sputtering. If engine does not accelerate properly the carburetor should be re-adjusted to a slightly richer mixture.

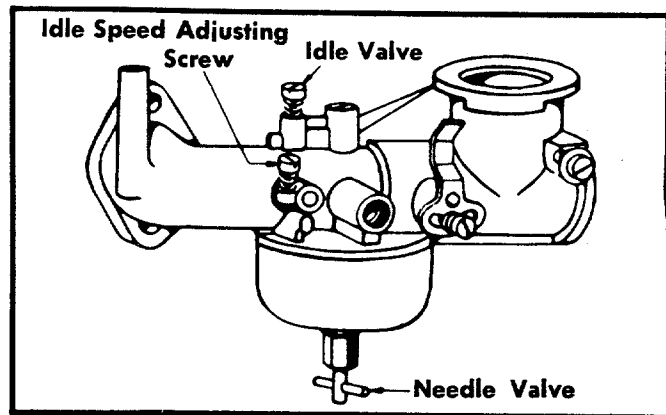


FIGURE 8. CARBURETOR ADJUSTMENT

CHAIN ADJUSTMENT

After the first five hours of operation the initial slack should be removed from the chain. The chain should be tight enough so that it deflects approximately 1/2" when it is depressed with the thumb.

To Adjust:

The adjusting bolt is located under the frame, above the cutting deck on the right side of the mower.

Turn the adjusting bolt clockwise with an open end wrench until the chain reaches the proper tension.

NOTE

If the transmission mounting plate will not slide forward to adjust the chain tension, it may be necessary to loosen the four nuts mounting the transmission to the frame.

To adjust the brake, tighten the locknut one half turn and then test the brakes. Repeat if necessary.

The brake is located by the right rear wheel inside the frame.

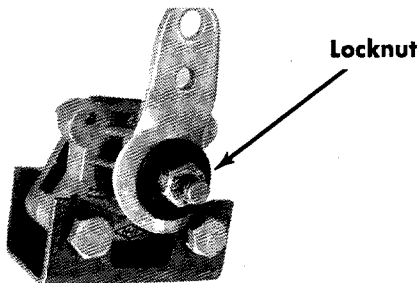


FIGURE 9. BRAKE ADJUSTMENT BLADES



WARNING

Disconnect the spark plug wire and remove the ignition key before removing the blades.

Sharp and balanced blades are essential for efficient mowing and long mower and engine life. When sharpening blades, file equal amounts of metal from each side. The blades should be balanced before they are reinstalled. An unbalanced blade will cause excessive vibration and undue wear on the mower and the engine. When reassembling, all parts must be installed in the proper order and fastened securely.

Remove the 3/8" bolt and lockwasher. Pull the blade and adapter off the mower deck. To remove the adapter from the blade, remove the two 5/16" bolts, lockwashers and nuts. See figure 11.

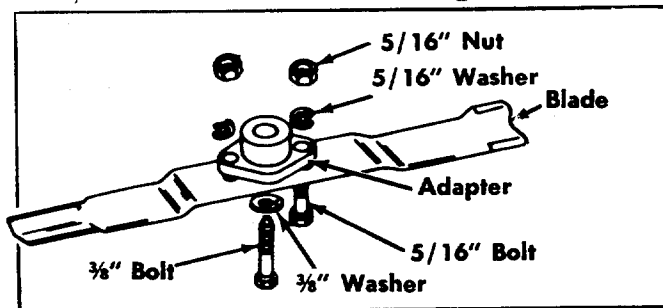


FIGURE 10. BLADE REMOVAL MOWER DECK

The underside of the mower deck should be cleaned after each period of use as grass clippings, leaves, dirt and other matter will

accumulate. This accumulation of grass clippings, etc., is undesirable as it will invite rust and corrosion and may cause an uneven discharge of grass clippings at the next mowing.

The deck may be cleaned by tilting the mower on its left side. Scrape clean with a suitable tool or by washing with a stream of water from a garden hose. Be sure to disconnect the spark plug wire and ground it while performing this maintenance.

PREPARING FOR BELT REMOVAL

1. To prevent gasoline from leaking from the engine, remove the fuel tank cap, place a piece of thin plastic over the neck of the fuel tank and screw on the cap.
2. Disconnect the spark plug wire and ground it against the engine.

NOTE

If the unit is equipped with a battery, continue with step 3.

3. Remove the battery to prevent acid from leaking.



WARNING

Disconnect the negative terminal first and connect last when installing the battery.

BELT REMOVAL. See figure 11.

To remove either or both belts:

1. Place the speed control lever in the locked position.
2. Move the lift and disengagement lever into the disengaged position.
3. Remove the two rear hex nuts on the engine bolts to remove the engine belt guard and slide the guard away from the chain to remove it.
4. Lower the cutting deck to its lowest position.
5. Remove the blade drive belt from the engine pulley.

NOTE

The blade drive belt need not be removed. Go to Step 8.

6. Remove the deck belt guards.
7. Remove and replace the belt.

To remove the variable speed belts:

8. Remove the variable speed pulley by removing the center hex nut and lockwasher.
9. Remove the transmission pulley by removing the hex nut and washer.
10. The belts can now be removed.

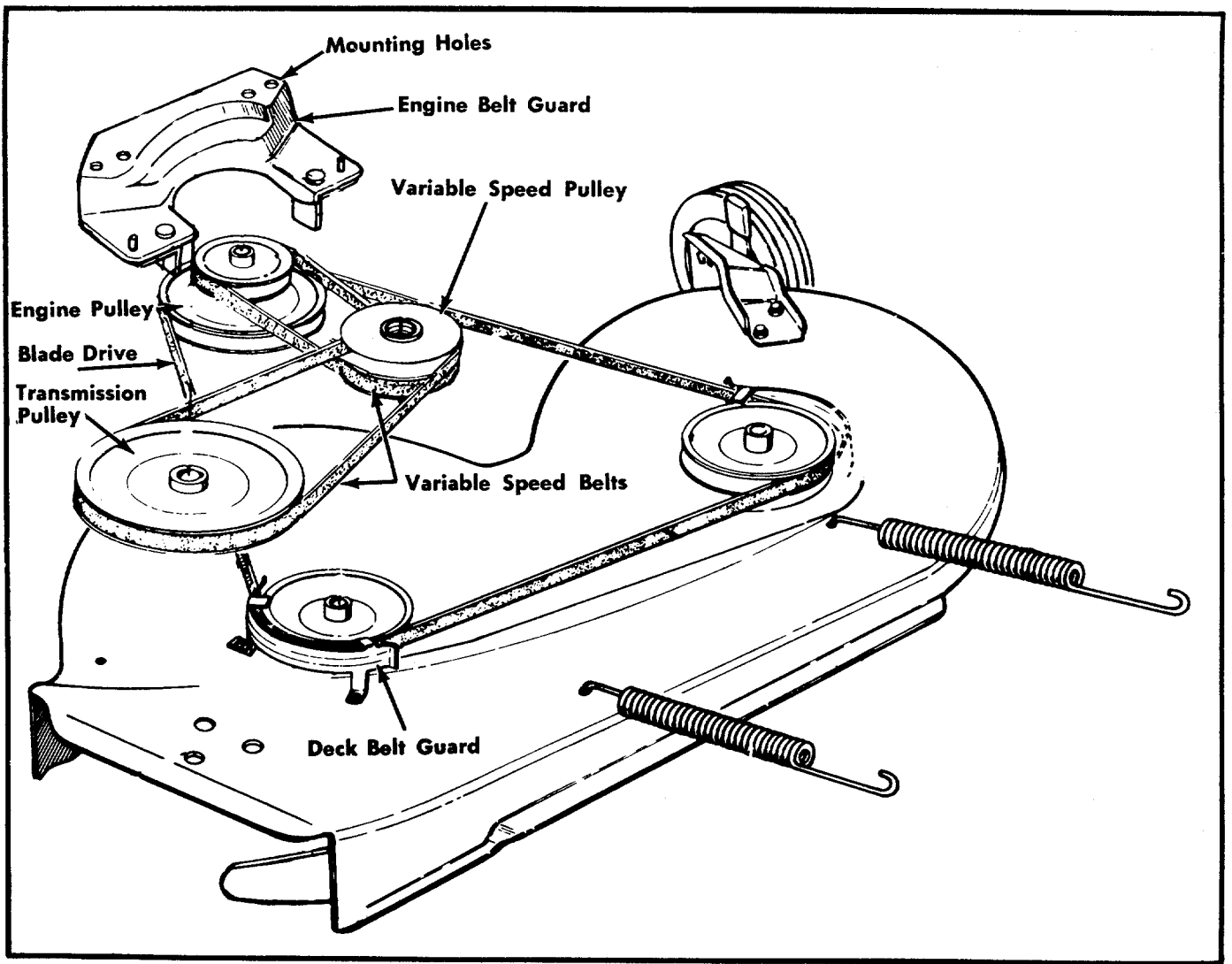


FIGURE 11. BELT REMOVAL

LUBRICATION

1. **Engine.** Maintain the engine oil according to the engine manual.
2. **Bearings.** The following bearings are oil impregnated and do not require lubrication, however, their normal life can be extended by lubricating them once a season with a light, non-detergent oil.
 - A. King Pin Bearings (total 4 bearings)
 - B. Rear Axle Bearings (total 3 bearings)
 - C. Front Wheel Bearings (total 4 bearings)
 - D. Deck Wheel Bearings (total 4 bearings)
3. **Throttle Control and Cable.** Wipe oiled rag along entire length of cable.

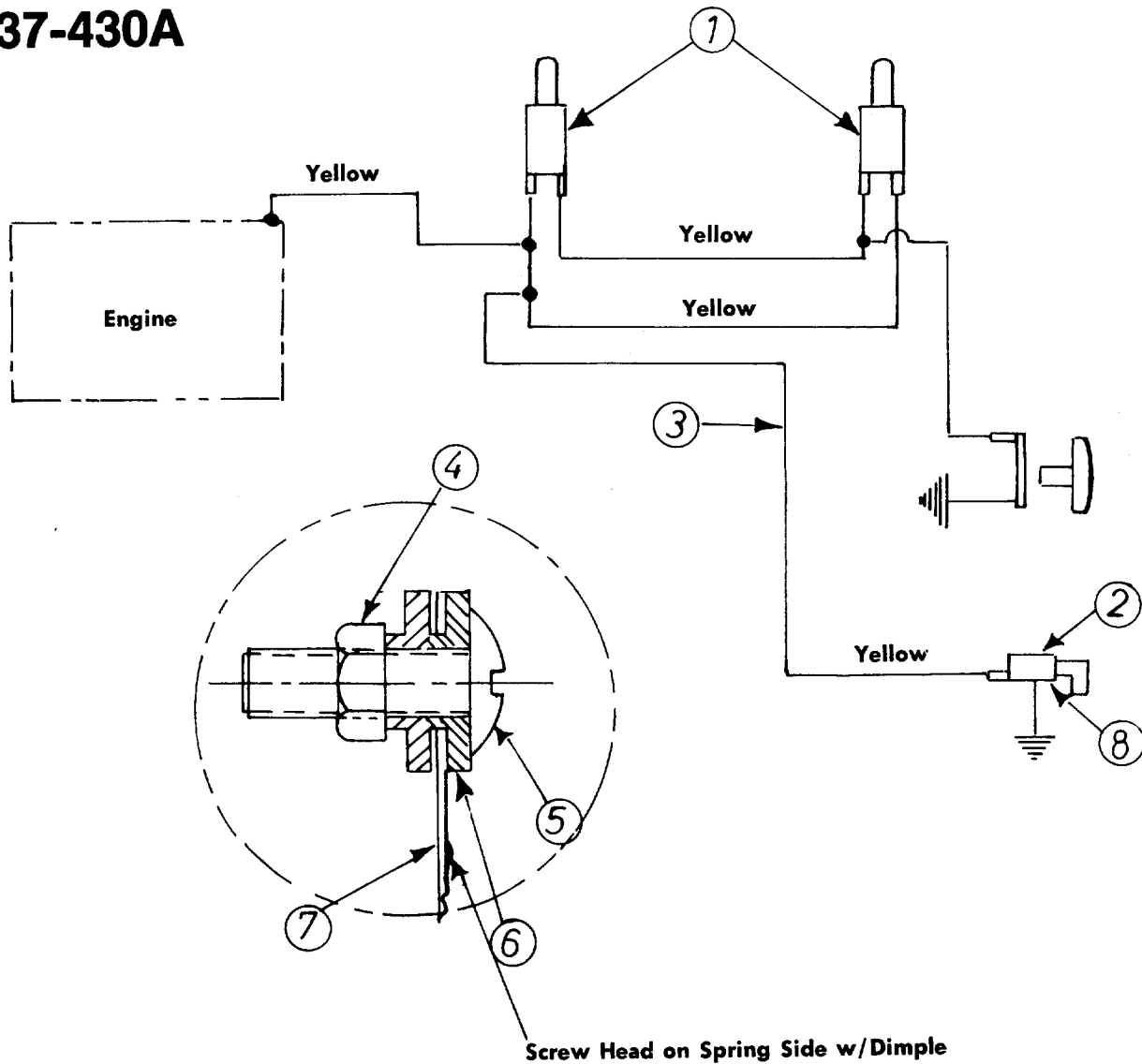
4. **Chain.** Wipe oiled rag along entire length of chain.

NOTE

Under extremely dusty conditions do not oil the chain.

5. **Linkage.** Oil all deck linkage and height adjustment linkage.
6. **Transmission.** Lubricated at the factory, does not require checking. Lubricate with 5 oz. of grease, high temp. 450°F, if disassembled.
7. **Differential.** Lubricated at the factory, does not require checking. Lubricate with 2 oz. of grease, high temp. 450°F if disassembled. If ordered from the factory use Part No. 737-0120.

137-430A

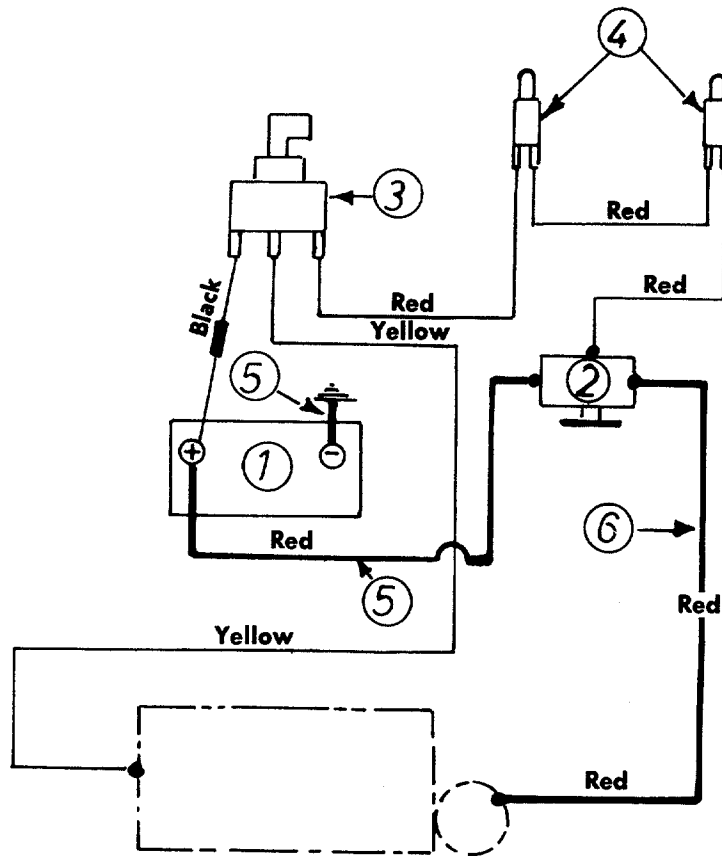


SCHEMATIC FOR ELECTRICAL SYSTEM

PARTS LIST FOR SCHEMATIC MODEL 137-430A

REF. NO.	PART NO.	DESCRIPTION	NEW PART
1	725-0269	Safety Switch Norm Closed-Red	
2	725-0464	Magneto Ignition Switch w/Nut	N
	725-0201	Ignition Key	
3	725-0281	Wire Harness	
4	712-0121	Hex Nut #10-24	
5	710-0425	Truss Mach. Scr. #10-24 x .62	
6	736-0338	Fiber Washer	
7	732-0257	Switch Spring	
8	736-0225	Internal L-Wash. 5/8 I.D.	

137-435A

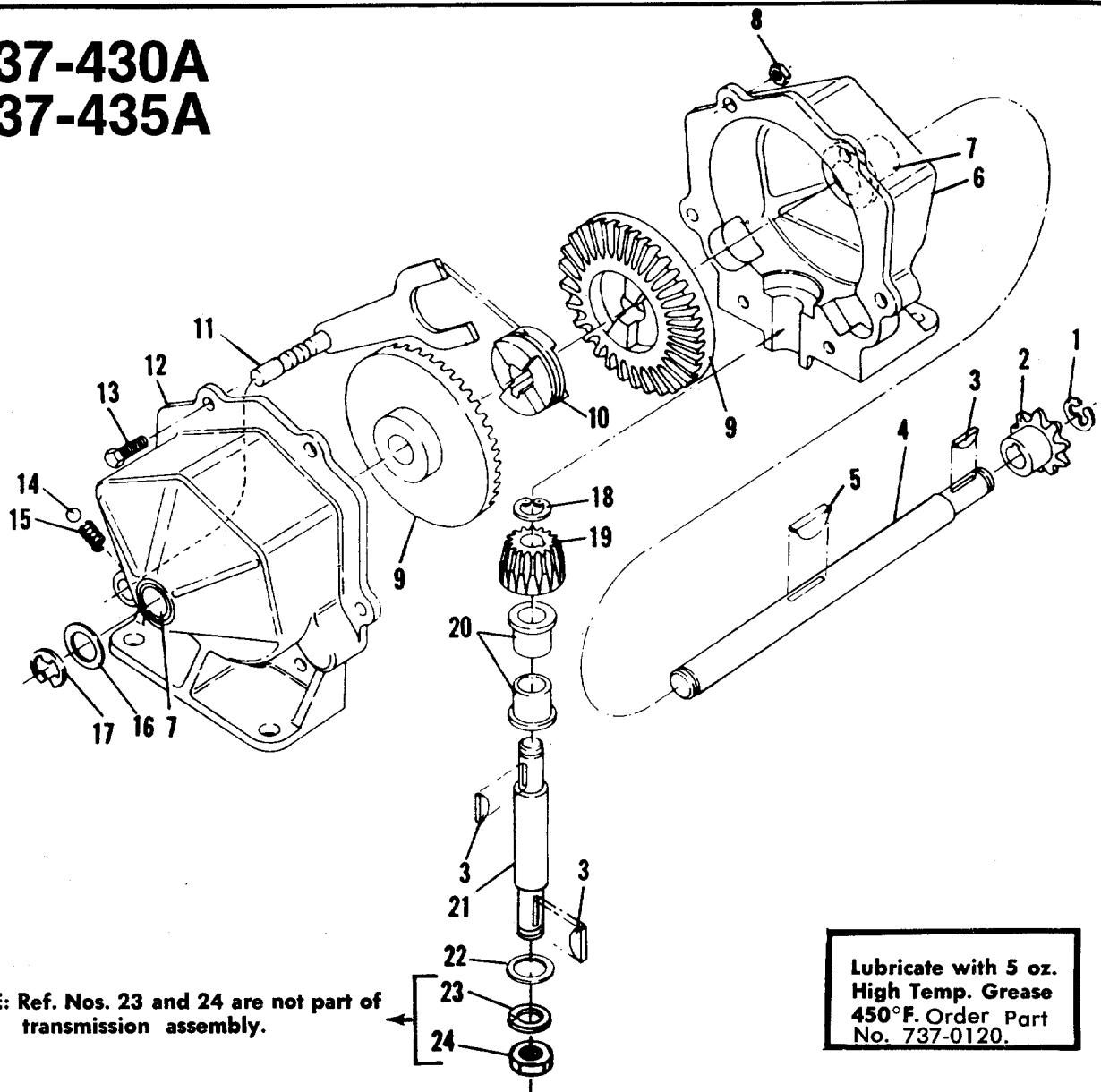


SCHEMATIC FOR ELECTRIC START MODEL

PARTS LIST OF SCHEMATIC FOR MODEL 137-435A

REF. NO.	PART NO.	DESCRIPTION	NEW PART
1	725-0117	Battery	
2	725-0530	Solenoid	N
3	725-0267	Key Switch	
4	725-0268	Safety Switch—Black	
5	725-0122	Electric Wire	
6	725-0150	Electric Wire	
7	725-0280	Wire Harness	

137-430A 137-435A



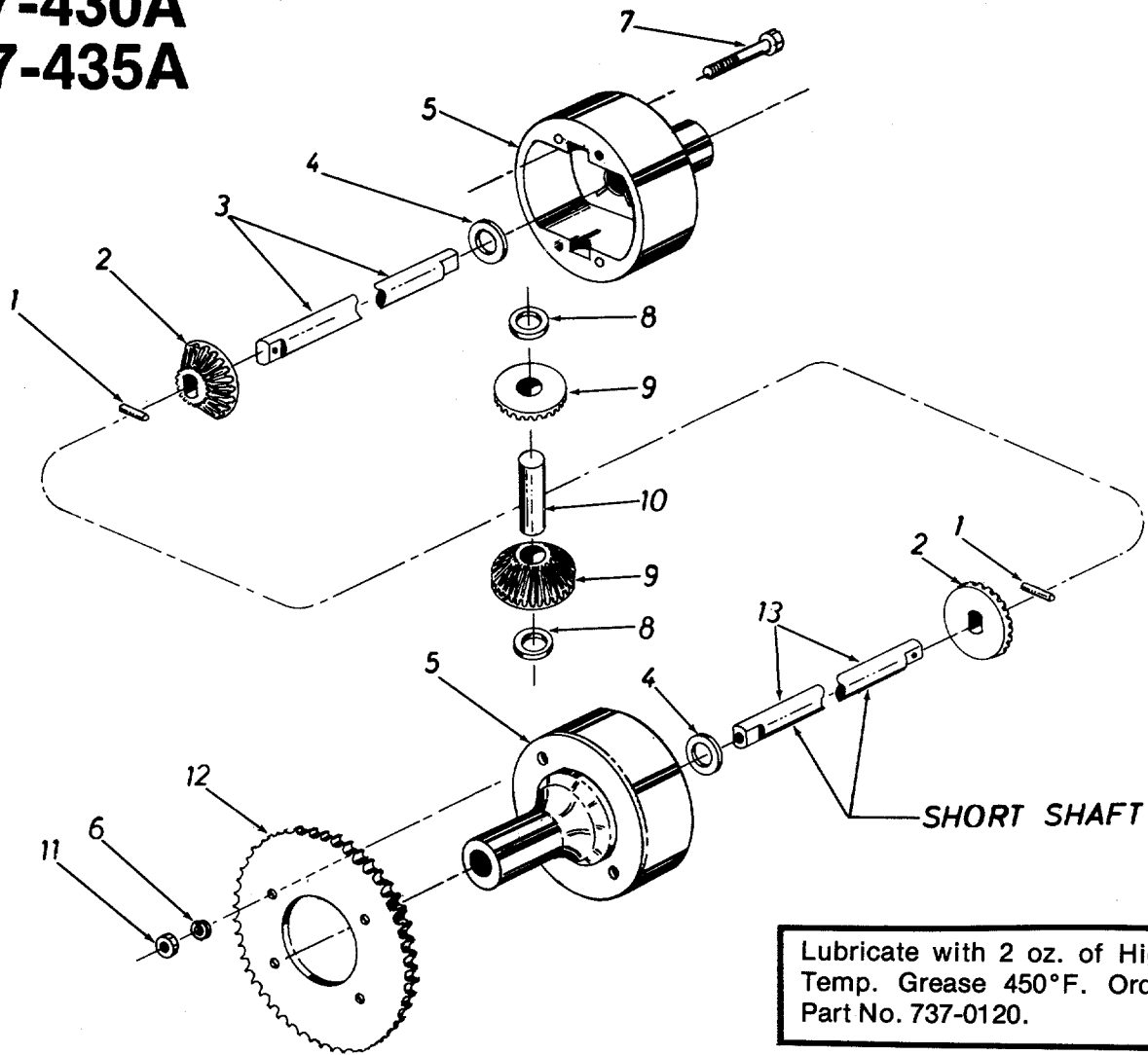
SINGLE SPEED TRANSMISSION PART NO. 717-0223

PARTS LIST FOR TRANSMISSION USED ON MODELS 137-430A AND 137-435A

REF. NO.	PART NO.	COLOR CODE	DESCRIPTION	NEW PART	REF. NO.	PART NO.	COLOR CODE	DESCRIPTION	NEW PART
1	716-0104		Snap Ring		13	710-0195		Hex Hd. Cap Scr. ¼-28 x .62*	
2	748-0852		Sprocket 8T #41		14	741-0862		Detent Ball	
3	714-0129		Key Hi-Pro #4		15	732-0863		Detent Spring	
4	711-0854		Shaft Output		16	736-0116		Washer	
5	714-0126		Key Hi-Pro #606 (Hardened)		17	716-0106		E-ring	
6	717-0123		Housing Half		18	716-0865		Snap Ring #3100-50	
7	748-0855		Bearing		19	748-0866		Bevel Pinion	
8	712-0117		Locknut ¼-28 Thd.*		20	748-0867		Bearing	
9	748-0856		Bevel Gear		21	738-0159		Pinion Shaft	
10	748-0857		Clutch Collar		22	736-0192		Washer	
11	08583		Detent Shaft Assembly		23	736-0921		Lockwasher ½"	
12	717-0124		Housing Half with Detent Hole		24	712-0922		Hex Jam Nut ½-20 Thd.*	
					25	737-0120		Grease High Temp. 450°F. (5 oz.)	

*For faster service obtain standard nuts, bolts and washers locally. If these items cannot be obtained locally order by part number and size as shown on parts list.

137-430A 137-435A



Lubricate with 2 oz. of High Temp. Grease 450°F. Order Part No. 737-0120.

PARTS LIST FOR DIFFERENTIAL ASSEMBY PART NUMBER 717-0328

Ref. No.	Part No.	Qty. Req'd.	Description	New Part
1	715-0247	2	Spring Pin Spir. 3/16" Dia. x 1.00" Lg.	
2	748-0185	2	Gear—Double "O" Hole	
3	738-0300	1	Shaft—Long 19.31" Lg.	
4	736-0188	2	FI-Wash. .760 I.D. x 1.49 O.D.	
5	717-0341	2	Housing Half	
6	736-0119	2	L-Wash. 5/16" Scr.*	
7	710-0363	2	Hex Scr. 5/16-24 x 4.00" Lg.*	
8	736-0187	2	FI-Wash. .640 I.D. x 1.24 O.D.	
9	748-0158	2	Gear—Round Hole	
10	711-0276	1	Drive Pin	
11	712-0237	2	Hex Cent. L-Nut 5/16-24 Thd.	
12	09054	1	Sprocket—40 Tooth	
13	738-0301	1	Shaft—Short 7.07" Lg.	

*For faster service obtain standard nuts, bolts and washers locally. If these items cannot be obtained locally, order by part number and size as shown on parts list.

TROUBLE SHOOTING CHART FOR RECOIL START MODELS

CAUTION: ALWAYS DISCONNECT SPARK PLUG BEFORE ATTEMPTING ANY REMEDY.

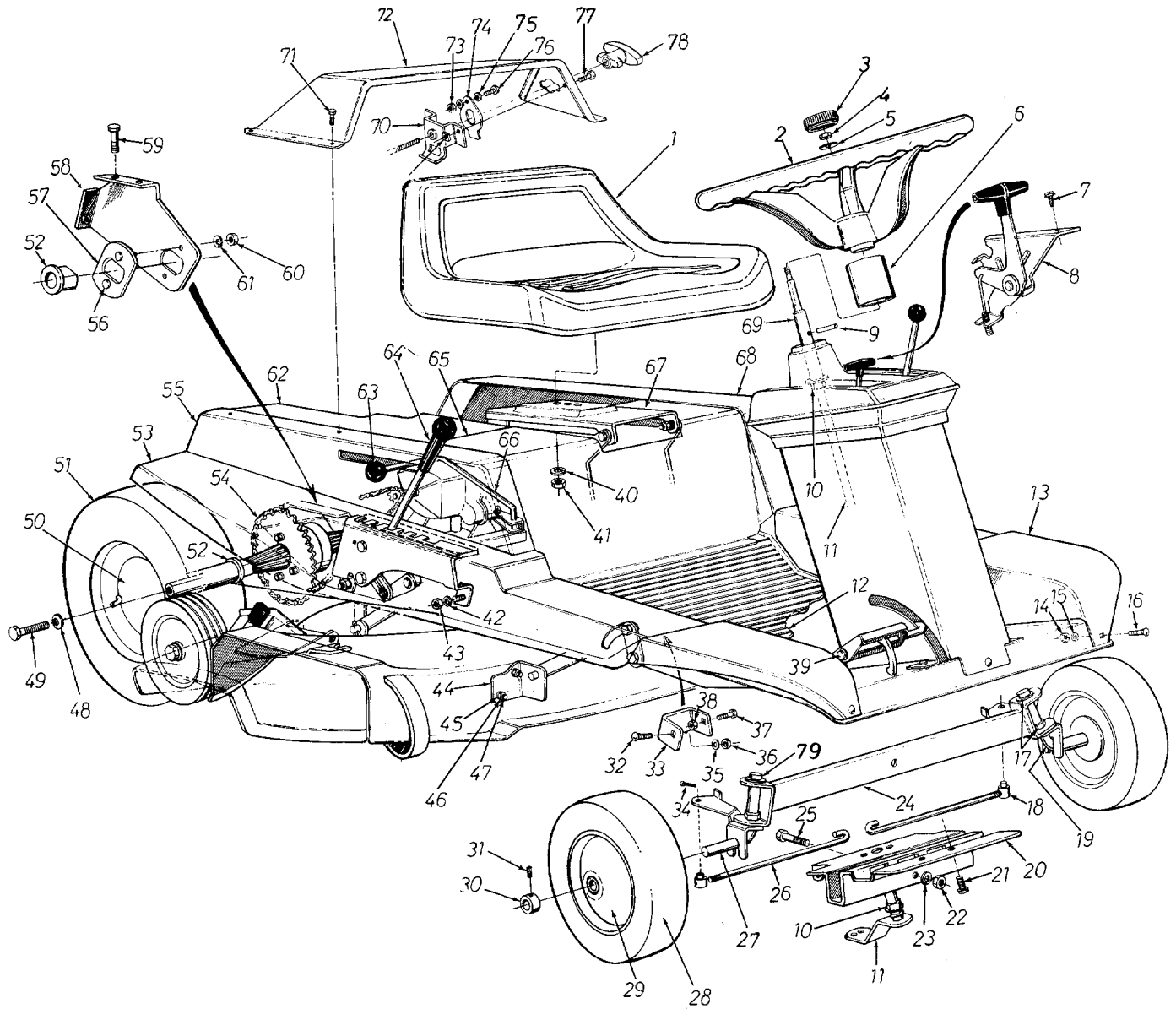
TROUBLE	LOOK FOR	REMEDY
Engine fails to start.	Safety System	If the engine will not start be sure the clutch control is disengaged; blade controls disengaged, the throttle control is set and the key is turned on. A. Disconnect the yellow wire from the engine. This comes from the ignition switch. B. If the engine fails to start the problem is with the engine, not the safety system. C. If the engine starts, the problem is with the safety system. Check the yellow wire for a ground. D. Check the operation of the switch behind the recoil starter handle. E. If the engine stops when the clutch or blade is engaged, the recoil handle is not pushed into the receptacle and twisted a quarter turn.
	Blocked fuel line or empty gas tank.	Clean fuel line; check fuel supply. Also check fuel shut-off valve.
	Defective spark plug.	Spark plug lead wire disconnected. Faulty spark plug—spark should jump gap between control electrode and side electrode. If spark does not jump, replace spark plug. NOTE: Use insulated pliers to hold the spark plug wire.
	Throttle setting.	Throttle control lever not in the starting position.
	Loose connections	Spark plug wire loose.
Hard starting or loss of power.	Dirty air cleaner.	Remove air cleaner and clean as outlined in Engine Manual .
	Carburetor improperly adjusted.	Review paragraph Carburetor Adjustment .
Excessive vibration.	Bent or damaged blade spindle.	Stop engine immediately; tighten all bolts and make all necessary repairs. If vibration continues, have the unit serviced by a competent repairman.
Unit fails to discharge grass.	Discharge chute clogged.	Clean discharge chute and inside of deck.
	Foreign object lodged in deck.	Remove object from deck. See CAUTION following step 1 in paragraph Operation .
Engine overheats.	Obstructions in air passages.	Remove any obstruction from air passages in shroud.
	Grass and dirt in engine shroud.	Clean cooling fins.
	Oil level.	Fill crankcase to proper oil level.

TROUBLE SHOOTING CHART FOR ELECTRIC START MODELS

TROUBLE	LOOK FOR	REMEDY
Engine fails to start.	Safety System	A. Check for a blown fuse in the wire leading from the positive terminal of the battery.
		B. Before checking the safety system further, be sure the clutch control and the blade control are disengaged; only the starting system is being checked. Therefore remove the spark plug lead and ground it to prevent the engine from starting.
		C. Attach a wire (minimum 18 gauge) to the positive terminal of the battery and touch the other end to the small terminal (coil primary) of the solenoid. If the engine cranks, the problem is in the safety system.
		D. Check for continuity from the battery to the solenoid. NOTE: The positive terminal of the battery should have a large cable (#8 gauge) and a small wire (#18 gauge) attached to it.
		E. Check all wires and cable for tightness.
	Blocked fuel line or empty gas tank.	Clean fuel line; check fuel supply. Also check fuel shut-off valve.
	Defective spark plug.	Spark plug lead wire disconnected. Faulty spark plug—spark should jump gap between control electrode and side electrode. If spark does not jump, replace spark plug. NOTE: Use insulated pliers to hold the spark plug wire.
	Throttle setting.	Throttle control lever not in the starting position.
	Loose connections	Spark plug wire loose.
Hard starting or loss of power.	Dirty air cleaner.	Remove air cleaner and clean as outlined in Engine Manual .
	Carburetor improperly adjusted.	Review paragraph Carburetor Adjustment .
Excessive vibration.	Bent or damaged blade spindle.	Stop engine immediately; tighten all bolts and make all necessary repairs. If vibration continues, have the unit serviced by a competent repairman.
Unit fails to discharge grass.	Discharge chute clogged.	Clean discharge chute and inside of deck.
	Foreign object lodged in deck.	Remove object from deck. See CAUTION following step 1 in paragraph Operation .
Engine overheats.	Obstructions in air passages.	Remove any obstruction from air passages in shroud.
	Grass and dirt in engine shroud.	Clean cooling fins.
	Oil level.	Fill crankcase to proper oil level.

137-430A 137-435A

IF YOU WRITE TO US ABOUT THIS ARTICLE
OR IF YOU ORDER REPLACEMENT PARTS AL-
WAYS MENTION THIS MODEL & SERIAL NO
MODEL



PARTS LIST FOR MODEL 137-430A AND 137-435A

REF. NO.	PART NO.	COLOR CODE	DESCRIPTION	NEW PART	REF. NO.	PART NO.	COLOR CODE	DESCRIPTION	NEW PART
1	757-0264		Seat Ass'y.—Comp.		41	712-0206		Hex Nut 1/2-13 Thd.*	
2	731-0219		Steering Wheel 12" Dia.		42	736-0119		L-Wash. 5/16" Scr.*	
3	731-0220		Steering Wheel Cap		43	712-0267		Hex Nut 5/16-18 Thd.*	
4	712-0158		Hex Cent. L-Nut 5/16-18 Thd.		44	11168		Lift Bracket	
5	736-0219		Belleville Wash. .400 I.D. x 1.13		45	736-0329		L-Wash. 1/4" Scr.*	
6	750-0316		Steering Tube		46	712-0287		Hex Nut 1/4-20 Thd.*	
7	710-0224		Hex AB-Tap Scr. #10 x .50" Lg.		47	710-0289		Hex Scr. 1/4-20 Thd.*	
8	746-0177		Throttle Control 53.0" Lg.		48	736-0242		Belleville Wash. .345 I.D. x .88 O.D.	
9	715-0114		Spring Pin Spir. 1/4" Dia. x 1.50" Lg.		49	710-0627		Hex Scr. w/lock 5/16-24 x .75" Lg.	
10	748-0227		Hex Flange Brg. .630 I.D.		50	734-0517		Rear Wheel Rim Ass'y. w/hub	
11	12812		Steering Shaft Ass'y.		51	734-0523		Rear Wheel Ass'y.—Comp.	
12	735-0117		Floor Mat		52	734-0298		Tire Only 13 x 5.00 Tubeless	
13	10810	-462	Fender—L.H.		53	741-0199		Flange Brg.—Plastic—	
14	712-0287		Hex Nut 1/4-20 Thd.*		54	10809	-462	Fender—R.H.	
15	736-0329		L-Wash. 1/4" Scr.*		54	713-0357		#41 Chain 1/2" Pitch x 67 Links	
16	710-0134		Carriage Bolt 1/4-20 x .62" Lg.*			713-0723		#41 Master Link 1/2" Pitch Type II	
17	748-0227		Hex Flange Brg. .630 I.D.		55	10824	-462	Eng. Box—Side Panel R.H.	
18	711-0198		Pivot Bushing (Tie Rod End)		56	710-0198		Hex Sems Scr. 5/16-18 x .75" Lg.*	
19	09709	-462	Front Wheel Axle Ass'y.—L.H.		57	10470		Bearing Plate	
20	11376	-462	Front Pivot Bracket		58	10471		Rear Axle Sup. Brkt. Ass'y.	
21	710-0198		Hex Sems Scr. 5/16-18 x .75" Lg.*		59	710-0198		Hex Sems Scr. 5/16-18 x .75" Lg.*	
22	712-0923		Hex Cent. L-Nut 5/8-18 Thd.		60	712-0267		Hex Nut 5/16-18 Thd.*	
23	736-0158		L-Wash 5/8" Scr.*		61	736-0119		L-Wash. 5/16" Scr.*	
24	09711	-462	Pivot Bar Ass'y.		62	10827	-462	Eng. Box—Top Panel	
25	710-0312		Hex Hd. Cap Scr. 5/8-18 x 1.31" Lg.		63	720-0165		Ball Knob—Black 3/8-16 Thd.	
26	711-0335		Tie Rod		64	720-0143		Grip—Black—Lift Handle	
27	09706	-462	Front Wheel Axle Ass'y.—R.H.		65	10826	-462	Eng. Box—Front Panel	
28	734-0484		Tire 10.5 x 3.50 Only—Front Wheel		66	10846		Shift Lever Ass'y.	
29	734-0483		Front Wheel Ass'y.—Comp. 10.5 x 3.50		67	10060	-462	Seat Bracket	
30	711-0169		Collar 5/8" I.D.		68	10825	-462	Engine Box Side Panel—L.H.	
31	710-0494		Sq. Hd. Set Scr. 5/16-18 x .38" Lg.		69	750-0296		Steering Wheel Adapter Ass'y.	
32	710-0134		Carriage Bolt 1/4-20 x .62" Lg.*		70	11053		Switch Brkt. Ass'y. (430A)	
33	10806	-462	Fender Brace		71	710-0224		Hex AB-Tap Scr. #10 x .50" Lg.	
34	714-0507		Cotter Pin 3/32" Dia. x 1.00" Lg.*		72	11528	-462	Eng. Box Top Bezel (430A)	
35	736-0329		L-Wash. 1/4" Scr.*			11527	-462	Eng. Box Top Bezel (435A)	
36	712-0287		Hex Nut 1/4-20 Thd.*		73	712-0121		Hex Nut #10-24 Thd. (430A)	
37	710-0252		Hex Scr. 1/4-20 x .75" Lg.*		74	732-0257		Switch Spring (430A)	
38	712-0287		Hex Nut 1/4-20 Thd.*		75	736-0338		Fiber W/h. (430A)	
39	726-0221		Push Cap 1/2" Dia.		76	710-0425		Truss Mach. Scr. #10-24 x .62" Lg. (430A)	
40	736-0921		L-Wash. 1/2" Scr.*		77	710-0351		Truss Mach Scr. #10 x .50" Lg. (430A)	
					78	11263		Handle—Plastic (430A)	
					79	714-0474		Cotter Pin 1/8 Dia. x .75	

*For faster service obtain standard nuts, bolts and washers locally. If these items cannot be obtained locally, order by part number and size as shown on parts list.

(462—Red Flake)

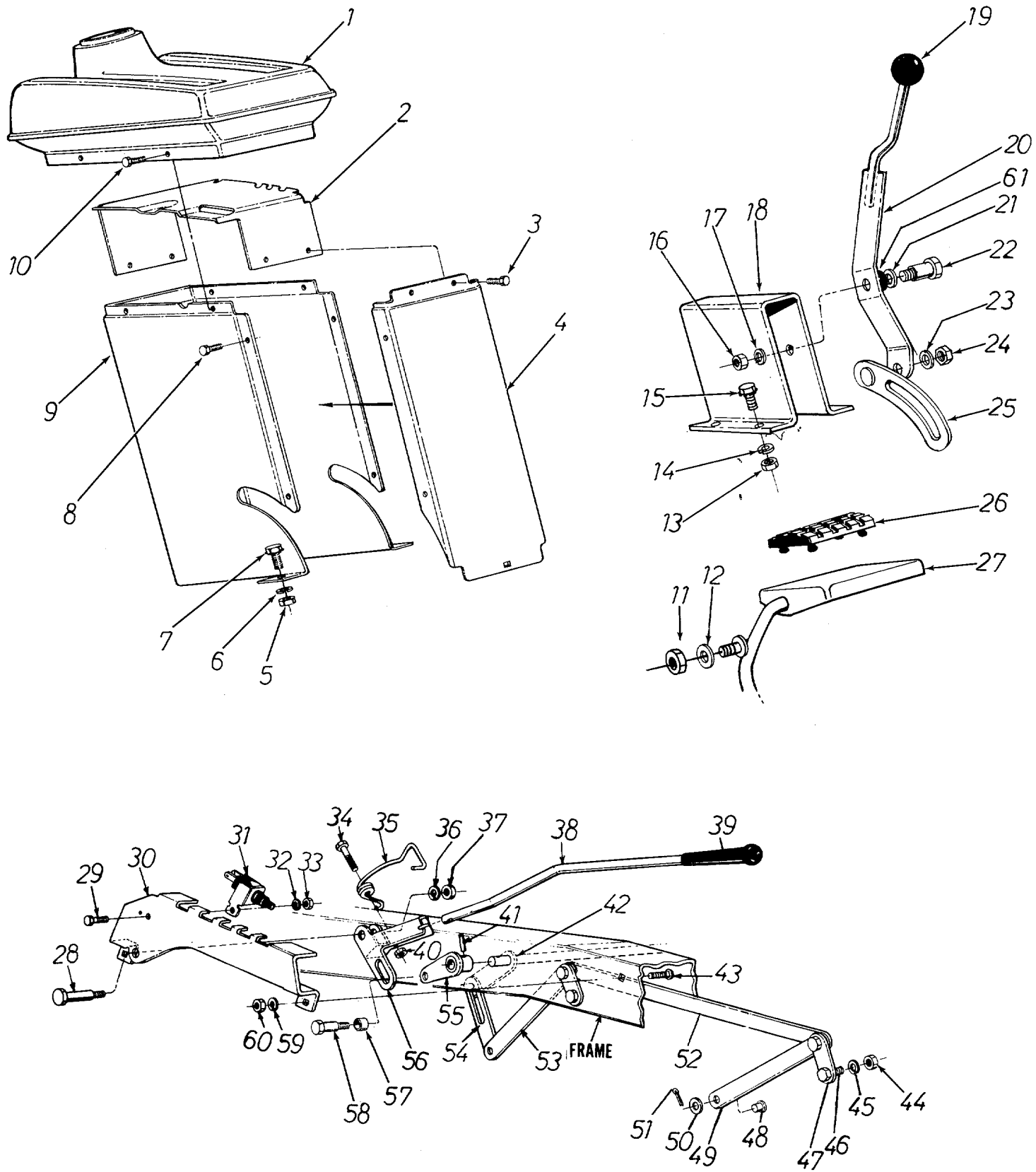
When ordering parts, if color or finish is important use the appropriate color code shown above (e.g. Red Flake finish—10057 (462)).

NOTE: This instruction manual covers various models and all accessories shown do not necessarily apply to your model mower.

NOTE: The engine is not under warranty by the mower manufacturer . . . If repairs or service is needed on the engine, please contact your nearest authorized engine service outlet. Check the "Yellow Pages" or your telephone book under "Engines—Gasoline."



137-430A 137-435A

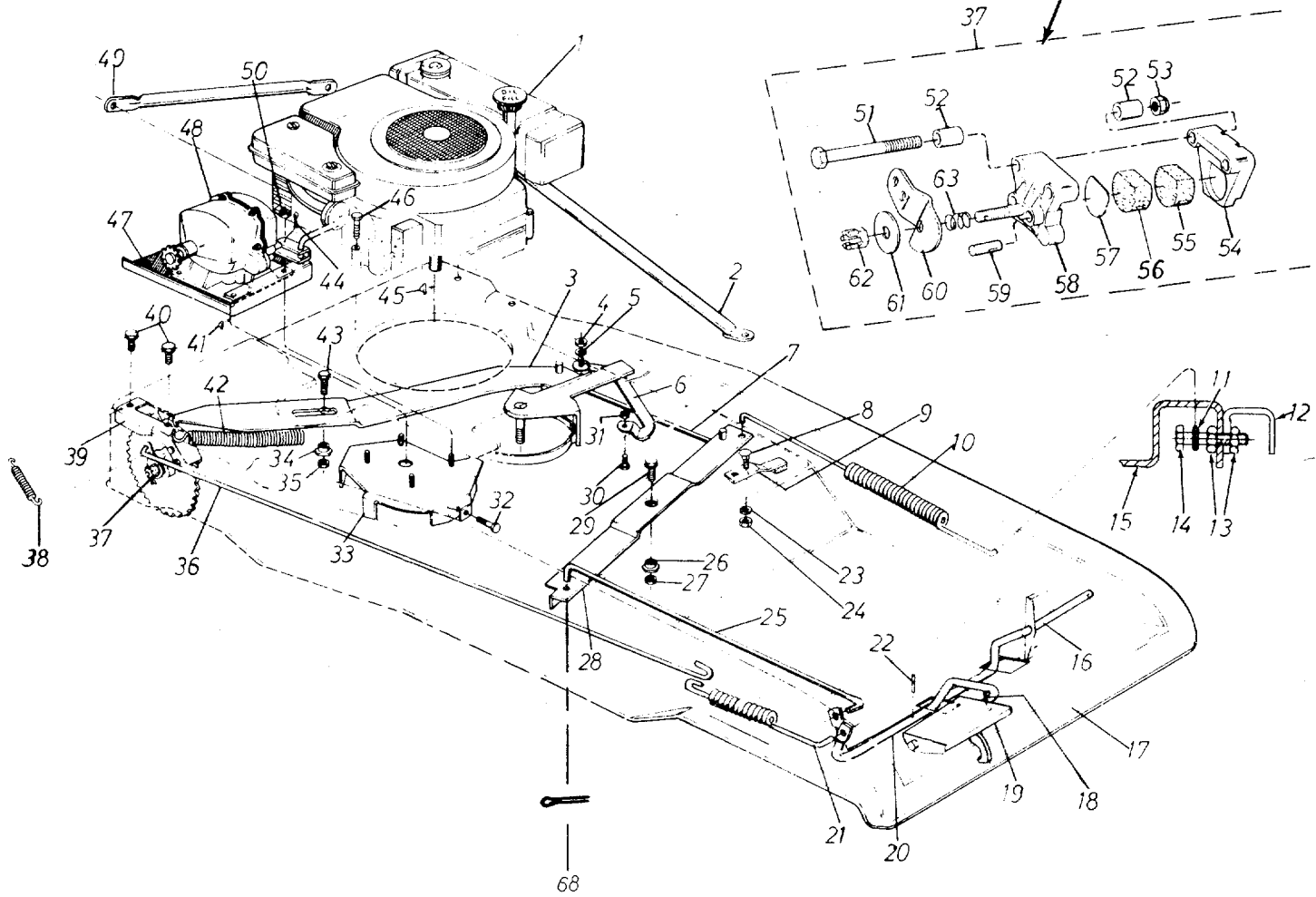


PARTS LIST FOR MODEL 137-430A AND 137-435A

REF. NO.	PART NO.	COLOR CODE	DESCRIPTION	NEW PART	REF. NO.	PART NO.	COLOR CODE	DESCRIPTION	NEW PART
1	731-0347		Steering Box Top Cover		30	11825		Index Bracket	
2	12819		Steering Support Brkt.		31	725-0268		Safety Switch (435A)	
3	710-0224		Hex AB-Tap Scr. #10 x .50" Lg.*			725-0269		Safety Switch (430A)	
4	10818 —462		Front Cover Steering Box		32	736-0329		L-Wash. 1/4" Scr.*	
5	712-0267		Hex Nut 5/16-18 Thd.*		33	712-0287		Hex Nut 1/4-20 Thd.*	
6	736-0119		L-Wash. 5/16" Scr.*		34	710-0559		Hex Scr. 1/4-28 x 1.75" Lg.*	
7	710-0198		Hex Sems Scr. 5/16-18 x .75" Lg.*		35	732-0231		Torsion Spring	
8	710-0179		Hex Tap Scr. 1/4" x .20 x .50 Lg.*		36	736-0169		L-Wash. 3/8" Scr.*	
9	11375 —462		Steering Box		37	712-0798		Hex Nut 3/8-16 Thd.*	
10	710-0224		Hex AB-Tap Scr. #10 x .50" Lg.*		38	11826		Lift Handle	
11	712-0214		Hex Cent. L-Nut 3/8-24 Thd.		39	720-0143		Grip	
12	736-0185		FI-Wash. .406 I.D. x .74 O.D.		40	712-0117		Hex Cent. L-Nut 1/4-28 Thd.*	
13	712-0267		Hex Nut 5/16-18 Thd.*		41	715-0107		Spring Pin Spirol 5/16" Dia. x 1.38" Lg.	
14	736-0119		L-Wash. 5/16" Scr.*		42	11830		Lift Shaft Ass'y.	
15	710-0198		Hex Sems Scr. 5/16-18 x .75" Lg.*		43	710-0260		Carriage Bolt 5/16-18 x .62" Lg.*	
16	712-0798		Hex Nut 3/8-16 Thd.*		44	712-0267		Hex Nut 5/16-18 Thd.*	
17	736-0169		L-Wash. 3/8" Scr.*		45	736-0119		L-Wash. 5/16" Scr.*	
18	10832		Brake Lever Bracket		46	738-0140		Shld. Scr. .437" Dia. x .180	
19	720-0165		Ball Knob—Black		47	09721		Pivot Link Ass'y.	
20	12817		Shift Lever Handle Ass'y.		48	711-0332		Lift Brkt Pin	
21	736-0160		FI-Wash. .530 I.D. x .930 O.D.		49	12337		Deck Link Ass'y.	
22	738-0234		Shld. Scr. .500" Dia. x .295		50	736-0192		FI-Wash. .531 I.D. x .93 O.D.	
23	736-0235		FI-Wash. .406 I.D. x 1.25 O.D.		51	714-0101		Int. Cotter Pin 1/2" Dia.	
24	712-0116		Hex Ins. L-Nut 3/8-24 Thd.		52	09735		Conn. rod 3/16 x 1.0 x 12.5" Lg.	
25	12825		Lock Link Ass'y.		53	12337		Deck Link Ass'y.	
26	12378		Brake Pedal Pad		54	09737		Link Slotted	
	12379		Clutch Pedal Pad (not shown)		55	11831		Lift Hub Ass'y.	
27	11379		Clutch Foot Pedal Rod Ass'y.		56	11827		Handle Lift Brkt. Ass'y.	
28	738-0213		Shld. Scr. .498" Dia. x 1.450		57	750-0195		Roller—Spacer .505 I.D. x .628	
29	710-0258		Hex Scr. 1/4-20 x .62" Lg.*		58	738-0234		Shld. Scr. .500" Dia. x .295	
					59	736-0119		L-Wash. 5/16" Scr.*	
					60	712-0267		Hex Nut 5/16-18 Thd.*	
					61	735-0185		Rubber Wash. .500 I.D.	

137-430A 137-435A

NOTE: If for any reason Disc Brake is d.sassembled, be sure round end of push pins (Ref. No. 59) is toward the cam lever (Ref. No. 60)



FRAME VIEW

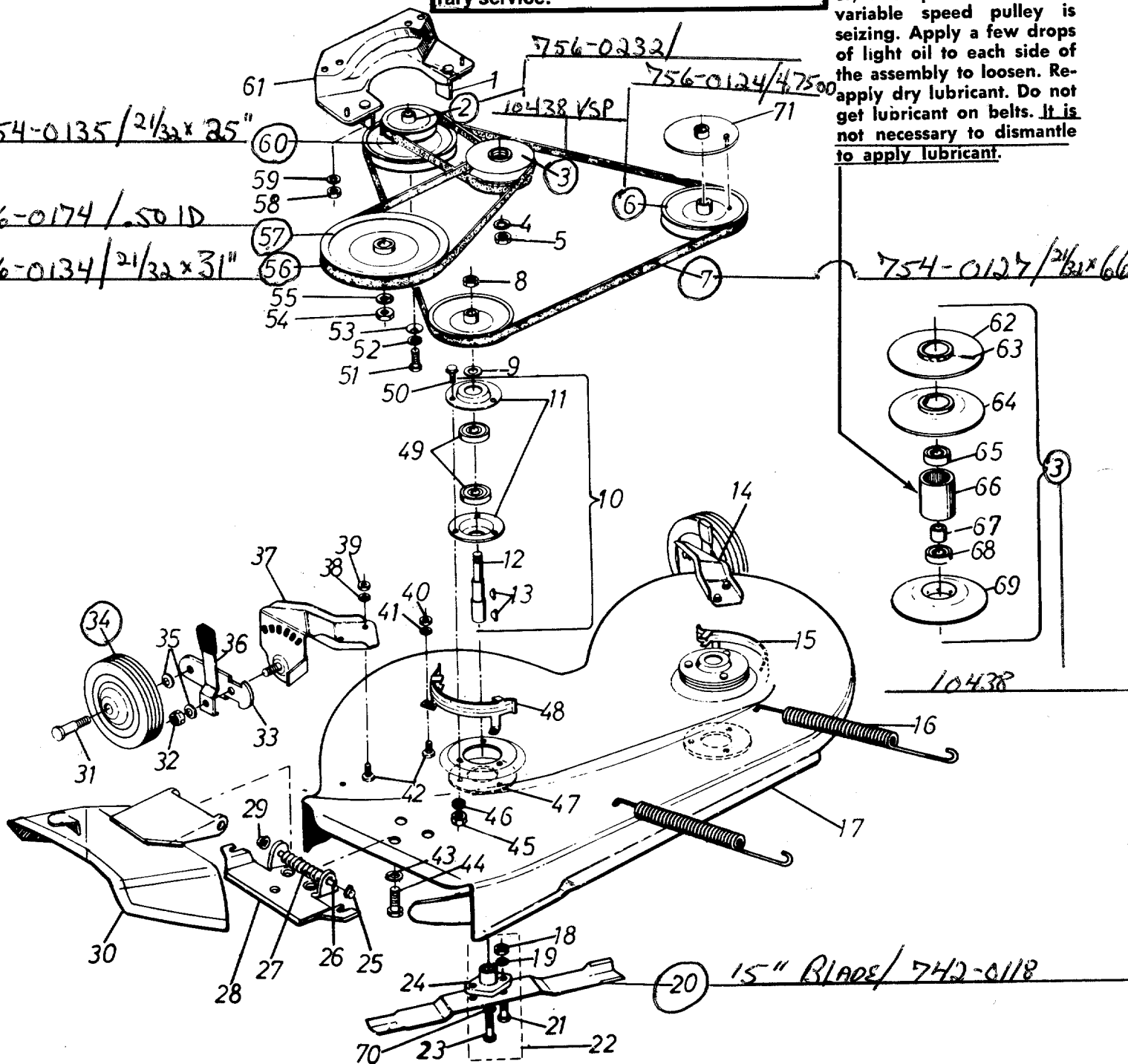
PARTS LIST FOR MODELS 137-430A AND 137-435A

REF. NO.	PART NO.	COLOR CODE	DESCRIPTION	NEW PART	REF. NO.	PART NO.	COLOR CODE	DESCRIPTION	NEW PART
1	—		Engine		36	747-0109		Brake Rod .25" Dia. x 31.62"	
2	10804		Engine Brace Ass'y.		37	761-0130		Disc. Brake Ass'y.—Comp.	
3	09785		Vari. Spd. Brkt. Ass'y.		38	732-0118		Extension Spring (Brake)	
	10599		Vari. Spd. Pulley & Brkt. Ass'y.—Comp.		39	10245	—462	Disc Brake Brkt. Ass'y.	
4	712-0267		Hex Nut 5/16-18 Thd.*		40	710-0198		Hex Sems Scr. 5/16-18 x .75"	
5	736-0119		L-Wash. 5/16" Scr.*		41	714-0129		#4 Hi-Pro Key 3/32 x 5/8" Dia. Hardened	
6	10173		Var. Spd. Guide Brkt. Assy.		42	732-0192		Spring .88 O.D. x 3.75 (Var. Drive)	
7	10080		Vari. Spd. Rod		43	710-0322		Hex Sems Scr. 5/16-18 x 1.00" Lg.*	
8	710-0134		Carriage Bolt 1/4-20 x .62"*		44	715-0119		Spring Pin Spir. 5/32" Dia. x .75" Lg.	
9	761-0157		Blade Brake Ass'y.		45	714-0365		#6 Hi-Pro Key 5/32 x 5/8" Dia.	
10	732-0191		Spring .75 O.D. x 11.0" Lg. (Variable Spd. Pedal)		46	710-0442		Hex Hd. Cap Scr. 5/16-18 x 1.50" Lg. H.T.	
11	732-0191		Spring .75 O.D. x 11.0" Lg. (Variable Spd. Pedal)		47	10247	—462	Transmission Plate	
12	10801	—462	Fender Brace		48	717-0223		Transmission Ass'y.—Comp.	
13	712-0287		Hex Nut 1/4-20 Thd.*		49	10404		Engine Brace	
14	710-0136		Hex Hd. Cap Scr. 1/4-20 x 1.75"		50	712-0429		Hex Ins. L-Nut 5/16-18 Thd.	
15	10057	—462	Frame		51	710-0378		Hex Hd. Cap Scr. 5/16-18 x 2.50" Lg.*	
16	11379	—462	Clutch Foot Pedal Rod Ass'y.		52	761-0133		Spacer for Disc Brake .322 I.D. x .38	
17	10057	—462	Frame		53	712-0158		Hex Center L-Nut 5/16-18 Thd.*	
18	715-0131		Spring Pin Roll 1/4" Dia. x 2.50"		54	HH-12-03293		Casting Carrier Side	
19	10848	—462	Foot Pedal Latch Ass'y.		55	HH-15-03149		Friction Pad 1.110" Dia. x .245 Thk.	
20	11378		Brake Foot Pedal Rod		56	HH-03-03303		Friction Pad 1.110" Dia. x .472 Thk.	
21	732-0245		Brake Spring		57	HH-03-03303		Back-up Disc	
22	715-0103		Sprg. Pin Spir. 1/8" Dia. x .75"		58	HH-12-03292		Casting Cam Side	
23	736-0329		L-Wash. 1/4" Scr.*		59	HH-05-03034		Push Pin	
24	712-0287		Hex Nut 1/4-20 Thd.*		60	HH-18-03493		Cam Lever	
25	10078		Foot Pedal Rod—18.80" Lg.		61	HH-03-03032		Washer	
26	711-0404		Shoulder Nut		62	HH-02-03631		Hex Locknut	
27	712-0429		Hex Cent. L-Nut 5/16-18 Thd.		63	HH-06-03031		Spring	
28	11382	—462	Clutch Bar Rod		66	737-0104		Sq. Hd. Pipe Plug 1/4" (For Eng. Oil Drain—Not Shown)	
29	710-0322		Hex Sems Scr. 5/16-18 x 1.00"*		67	737-0127		Pipe Nipple 3/8-1/4 x 3.0" Lg. (For Eng. Oil Drain—Not Shown)	
30	710-0198		Hex Sems Scr. 5/16-18 x .75"*		68	714-0111		Cotter Pin 3/32 Dia. x 1.00	
31	712-0267		Hex Nut 5/16-18 Thd.*						
32	710-0117		Hex Hd. Cap Scr. 5/16-24 x 1.00" Lg. H.T.						
33	09780	—462	Trans. Belt Guard Ass'y.						
34	711-0404		Shoulder Nut						
35	712-0429		Hex Ins. L-Nut 5/16-18 Thd.						

137-430A 137-435A

IMPORTANT
Belts listed by Part Number are of special construction and should be used when replacement is necessary. The dimensions and description given are for general reference only and belts purchased by description and dimension generally will only provide temporary service.

NOTE: If mower fails to respond to speed control lever, it is possible that the variable speed pulley is seizing. Apply a few drops of light oil to each side of the assembly to loosen. Re-apply dry lubricant. Do not get lubricant on belts. It is not necessary to dismantle to apply lubricant.



DECK AND BELT SYSTEM

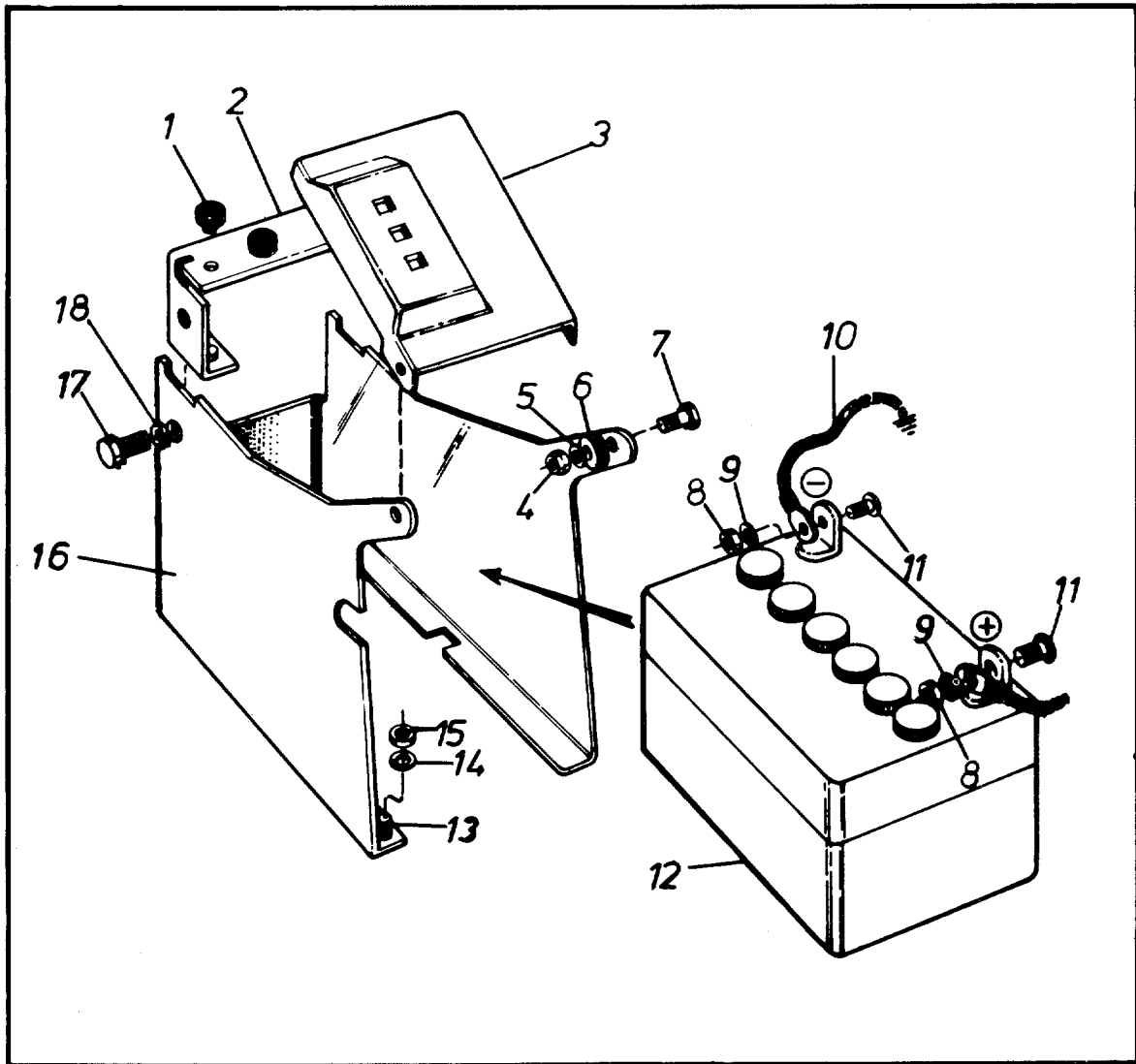
PARTS LIST FOR MODELS 137-430A AND 137-435A

REF. NO.	PART NO.	COLOR CODE	DESCRIPTION	NEW PART	REF. NO.	PART NO.	COLOR CODE	DESCRIPTION	NEW PART
1	10426		Belt Keeper Ass'y.		40	712-0267		Hex Nut 5/16-18 Thd.*	
2	756-0232		Two Step Engine Pulley		41	736-0119		L-Wash. 5/16" Scr.*	
3	10438		Vari. Speed Pulley Ass'y.		42	710-0289		Hex Hd. Cap Scr. 1/4-20 x .50"	
4	736-0921		L-Wash. 1/2" Scr.*						
5	712-0922		Hex Jam Nut 1/2-20" Thd.		43	736-0329		L-Wash. 1/4" Scr.*	
6	756-0124		Pulley 4.75 O.D. (Deck)		44	710-0195		Hex Hd. Cap Scr. 1/4-28 x .62"	
7	754-0127		V-Belt 21/32 x 66.0" Lg.						
8	712-0261		Hex Jam Nut 5/8-11 Thd. (Deck)		45	712-0267		Hex Nut 5/16-18 Thd.*	
9	736-0162		Flat Washer .641 I.D.		46	736-0119		L-Wash. 5/16" Scr.*	
10	09321		Blade Spindle Ass'y.		47	09164		Deck Reinforcement Plate	
11	08253		Housing—Bearing		48	09733		Belt Guard (Deck)	
12	711-0255		Blade spindle		49	741-0919		Ball Brg. .787 I.D. x 1.85 O.D.	
13	714-0365		#6 Hi-Pro Key 5/32 x 5/8" Dia.		50	710-0322		Hex Sems Scr. 5/16-18 x 1.00"	
14	11237		Wheel Brkt. Ass'y. L.H. (Deck)		51	710-0152		Hex Hd. Cap scr. 3/8-24 x 1.00" Lg. H.T.	
15	09733		Belt Guard (Deck)		52	736-0217		L-Wash. 3/8" Scr. H.D.	
16	732-0153		Spring .750" O.D. x 8.65" Lg.		53	736-0235		Flat Wash. .406 I.D. x 1.25 O.D.	
17	12340		30 Inch Deck Ass'y.						
18	712-0123		Hex Nut 5/16-24 Thd.*		54	710-0152		Hex Hd. Cap Scr. 3/8-24 x 1.00" Lg. H.T.	
19	736-0119		L-Wash. 5/16" Scr.*						
20	742-0118		15 Inch Blade		55	736-0921		L-Wash. 1/2" Scr.*	
21	710-0117		Hex Hd. Cap Scr. 5/16-24 x 1.00" Lg. H.T.		56	754-0136		V-Belt 21/32 x 31" Lg. (For Transmission Pulley)	
22	10769		Blade Adapter Kit		57	756-0174		Split Transmission Pulley .50 I.D.	
23	710-0459		Hex Hd. Cap Scr. 3/8-24 x 1.50" Lg. H.T.		58	712-0267		Hex Nut 5/16-18 Thd.*	
24	10769		Blade Adapter Kit		59	736-0119		L-Wash. 5/16" Scr.*	
25	726-0106		Push Nut 1/4" Rod		60	754-0135		V-Belt 21/32 x 25" Lg. (From Eng. Pulley to Var. Spd. Pulley)	
26	711-0571		Pivot Pin						
27	732-0261		Torsion Spring						
28	11399		Adapter Plate Ass'y.		61	10424		Belt Guard Cup Ass'y. (For Eng. Pulley)	
29	726-0106		Push Nut 1/4" Rod						
30	11574		Chute Deflector Ass'y.		62			(Not Replaceable In Service)	
31	738-0119		Shld. Scr. .625" Dia. x 1.75 (Axle Bolt)		63	715-0124		Spring Pin Spir. 5/32" Dia. x .62" Lg.	
32	712-0116		Hex Ins. L-Nut 3/8-24 Thd.		64	748-0181		Moveable Sheave Ass'y.	
33	10937		Wheel Pivot Bar		65	741-0139		Ball Brg. .50 I.D. x 1.38 O.D.	
34	734-0295		5.0 Inch Wheel Ass'y. (Deck)		66			(Not Replaceable In Service)	
35	736-0105		Belleville Wash. .400 I.D. x .88 O.D.		67	750-0146		Spacer .520 I.D. x .692 O.D.	
36	10949		Spring Lever Ass'y. with Knob		68	741-0139		Ball Brg. .50 I.D. x 1.38 O.D.	
37	11236		Wheel Brkt. Ass'y.—R.H.		69			(Not Replaceable In Service)	
38	736-0119		L-Wash. 5/16" Scr.*		70	736-0217		L-Wash. 3/8" Scr. H.D.	
39	712-0267		Hex Nut 5/16-18 Thd.*		71	11530		Blade Brake Disc Ass'y.	
					72	12347		30" Deck Ass'y.—Comp.	

WHEEL CHART

FRONT WHEEL		REAR WHEEL	
Part. No.	Description	Part. No.	Description
734-0483	Wheel Ass'y.—Comp.	734-0523	Wheel Ass'y.—Comp.
748-0184	Bearing	734-0517	Rim with Hub Ass'y.
		734-0298	Tire Only Tubeless 13 x 5.00
		734-0255	Air Valve
		—	Hub Part of Rim
		734-0249	Inner Tube (Service Only)

137-430A 137-435A



BATTERY BOX BREAKDOWN

PARTS LIST FOR BATTERY BREAKDOWN MODELS 137-430A AND 137-435A

REF. NO.	PART NO.	COLOR CODE	DESCRIPTION	NEW PART	REF. NO.	PART NO.	COLOR CODE	DESCRIPTION	NEW PART
1	735-0109		Stem Bumper		11	710-0252		Hex Hd. Cap Scr. 1/4-20 x .75" Lg.* (435A)	
2	10062	-462	Battery Box Bracket Ass'y.		12	725-0117		Battery Dry 12 Volt with Acid Pack (435A)	
3	10060	-462	Seat Bracket		13	710-0322		Hex Sems Scr. 5/16-18 x 1.00" Lg.*	
4	712-0267		Hex Nut 5/16-18 Thd.*		14	736-0119		Spring Lockwasher 5/16" Scr.*	
5	736-0159		Flat Washer .344 I.D. x .88 O.D.		15	712-0267		Hex Nut 5/16-18 Thd.*	
6	735-0127		Rubber Washer .33 I.D. x .87 O.D.		16	10059	-462	Battery Box	
7	710-0198		Hex Sems Scr. 5/16-18 x .75" Lg.*		17	710-0216		Hex Hd. Cap Scr. 3/8-16 x .75" Lg.*	
8	712-0287		Hex Nut 1/4-20 Thd.* (435A)		18	736-0169		Spring Lockwasher 3/8" Scr.*	
9	736-0329		Spring Lockwasher 1/4" Scr.* (435A)		19	725-0156		Battery Charger (Not Shown)	
10	725-0150		Battery Ground Wire (435A)						

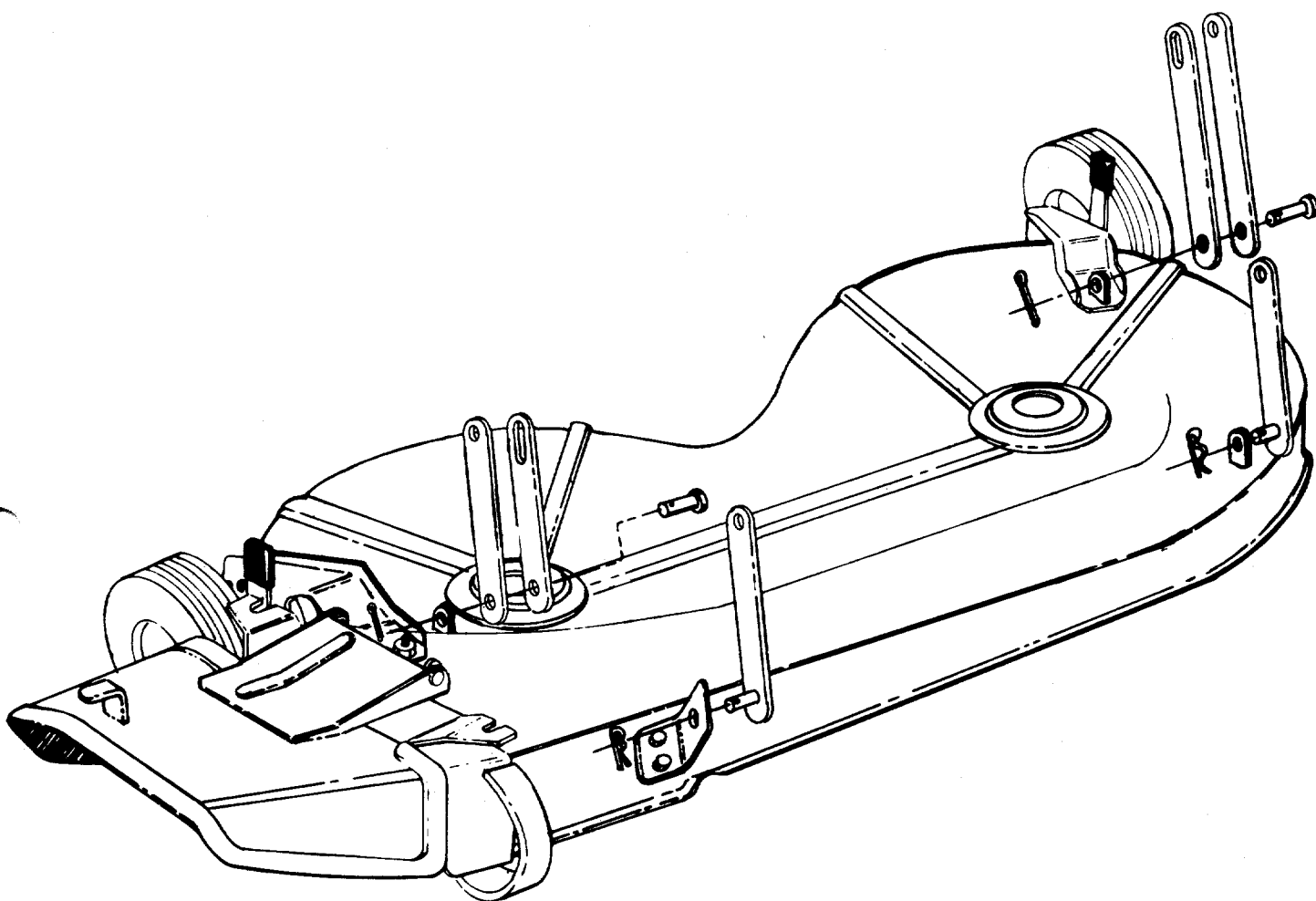
*For faster service obtain standard nuts, bolts and washers locally. If these items cannot be obtained locally, order by part number and size as shown on parts list.

DECK LINKAGE



NOTE

Refer to illustration below for proper deck link hook-up. If the deck is removed for any reason use the illustration below for correct assembly.



PARTS INFORMATION

POWER EQUIPMENT PARTS AND SERVICE

Parts and service for all MTD manufactured power equipment are available through the authorized service firms listed below. All orders should specify the model number of your unit, parts numbers, description of parts and the quantity of each part required.

ALABAMA	BIRMINGHAM	
	Auto Electric & Carburetor Co.	2625 4th Ave. S. 35233
ARKANSAS	NORTH LITTLE ROCK	
	Sutton's Lawn Mower Shop	Rt. 4, Box 368 72117
	FORT SMITH	
	Mity Mite Motors, Inc.	2515 Towson Ave. 72901
CALIFORNIA	SAN BERNARDINO	
	Lawn Mower Supply Co.	25608 E. Baseline 92410
	SAN FRANCISCO	
	J.W. Jewett Co.	981 Folsom St. 94107
	SACRAMENTO	
	Luttig & Severson	2030 28th St. 95818
COLORADO	DENVER	
	South Denver Lawn Equip.	527 West Evans 80223
CONNECTICUT	SUFFIELD	
	The Jones & Ramsey Co.	850 Thompsonville Rd. 06078
FLORIDA	JACKSONVILLE	
	Radco Distributors	2403 Market St. 32206
	CORAL GABLES	
	Moz-All of Florida, Inc.	365 Greco Ave. 33146
GEORGIA	EAST POINT	
	East Point Cycle & Key	2834 Church St. 30344
ILLINOIS	LYONS	
	Keen Edge Co.	8615 Ogden Ave.60534
INDIANA	ELKHART	
	Parts & Sales Inc.	2101 Industrial Pkwy. ..46514
IOWA	DUBUQUE	
	Power Lawn & Garden Equip.	2551 J.F. Kennedy 52001
KANSAS	WICHITA	
	Hixon, Inc.	3030 Mascot 67204
LOUISIANA	NEW ORLEANS	
	Suhren Engine Co.	8330 Earhart Blvd. 70118
MARYLAND	TAKOMA PARK	
	Center Supply Co.	6867 New Hampshire Ave. 20012
MASSACHUSETTS	SPRINGFIELD	
	Morton B. Collins Co.	300 Birnie Ave. 01107
MICHIGAN	MOUNT CLEMENS	
	Power Equipment Dist.	36463 South Gratiot... 48043
	LANSING	
	Lorenz Service Co.	2500 S. Pennsylvania.. 48900
MINNESOTA	MINNETONKA	
	Hance Distributing Inc.	11212 Wayzata Blvd. ..55343
MISSISSIPPI	BILOXI	
	Biloxi Sales & Service, Inc.	506 Caillavet St. 39533
MISSOURI	KANSAS CITY	
	Automotive Equip. Service	3117 Holmes St. 64109
	ST. LOUIS	
	Henzler, Inc.	2015 Lemay Ferry Rd. 63125
NEW YORK	CARTHAGE	
	Gamble Dist., Inc.	West End Ave. 13619
	SYRACUSE	
	Kimber's, Inc.	115 N. Geddes St. 13204

BRIGGS & STRATTON, TECUMSEH AND PEERLESS PARTS AND SERVICE

Briggs & Stratton, Tecumseh and Peerless parts and service should be handled by your nearest authorized engine service firm. Check the yellow pages of your telephone directory under the listing *Engines Gasoline*, Briggs & Stratton or Tecumseh Lauson

NORTH CAROLINA	GREENSBORO	
	Dixie Sales Company	327 Battleground Ave.. 27402
	GOLDSBORO	
	Smith Hardware Co.	515 N. George St. 27530
OHIO	WADSWORTH	
	National Central	687 Seville Rd. 44281
	CLEVELAND	
	Bleckrie, Inc.	7900 Lorain Ave. 44102
	CARROL	
	Stebe's Mid-State Mower Supply	Box 366 43112
	WILLARD	
	Sunshine Wholesale Tire Outlet	Route 224 44890
	MANSFIELD	
	McClure Lawn & Garden Supply	1114 Lexington Ave. . 44903
OKLAHOMA	MUSKOGEE	
	Victory Motors, Inc.	605 S. Cherokee 74401
	ADA	
	Ada Auto Supply	301 E. 12th St. 74820
OREGON	PORTLAND	
	Kenton Supply Co.	8216 N. Denver Ave. . 97217
PENNSYLVANIA	LANCASTER	
	Raub Supply Co.	James & Mulberry Sts...17604
	PITTSBURGH	
	Bluemont Co.	11125 Frankstown Rd.. 15235
TENNESSEE	KNOXVILLE	
	Master Repair Service	2423 Broadway, N.E. ..37917
	MEMPHIS	
	Memphis Cycle & Supply Co.	421 Monroe Ave. 38103
	American Sales & Service, Inc.	1922 Lynnbrook 38116
TEXAS	DALLAS	
	Marr Brothers, Inc.	423 E. Jefferson 75203
	HOUSTON	
	Bullard Supply Co.	2409 Commerce St. 77003
	SAN ANTONIO	
	Catto & Putty, Inc.	P.O. Box 240878206
	FORT WORTH	
	Woodson Sales Corp.	1702 N. Sylvania 76111
UTAH	SALT LAKE CITY	
	A-1 Engine & Mower Co.	437 E. 9th St.84111
VERMONT	BURLINGTON	
	Vermont Appliance Co.	44 Lakeside Ave.05401
VIRGINIA	RICHMOND	
	RBI Corp.	963 Myers St. 23260
WASHINGTON	SEATTLE	
	Bailey's Rebuild, Inc.	1325 E. Madison St. ...98102
WEST VIRGINIA	CHARLESTON	
	Young's, Inc.	233 Virginia St., E. ... 25301
WISCONSIN	APPLETON	
	Automotive Supply Co.	123 S. Linwood Ave. ..54911

WARRANTY PARTS AND SERVICE POLICY

The purpose of warranty is to protect the customer from defects in workmanship and materials, defects which are NOT detected at the time of manufacture. It does not provide for the unlimited and unrestricted replacement of parts. Use and maintenance are the responsibility of the customer. The manufacturer cannot assume responsibility for conditions over which it has no control. Simply put, if it's the manufacturer's fault, it's the manufacturer's responsibility; if it's the customer's fault, it's the customer's responsibility.

CLAIMS AGAINST THE MANUFACTURER'S WARRANTY INCLUDES

1. Replacement of Missing Parts on new equipment.
2. Replacement of Defective Parts within the warranty period.
3. Repair of Defects within the warranty period.

All claims MUST be substantiated with the following information:

1. Model Number of unit involved.
2. Date unit was purchased or first put into service.
3. Date of failure.
4. Nature of failure.