

# OWNER'S MANUAL

- ASSEMBLY
- OPERATION
- MAINTENANCE
- PARTS LIST

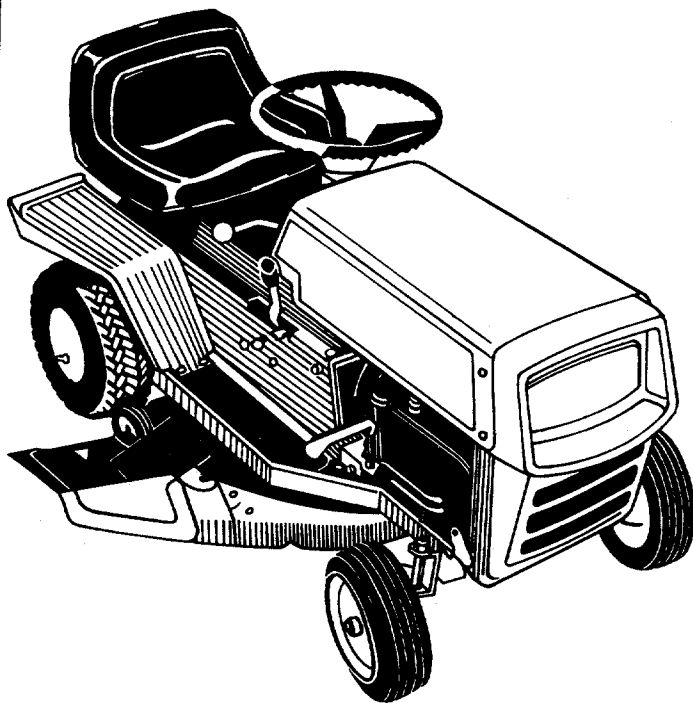
**Model Nos.**  
**137-380A**  
**137-385A**  
**137-380-300**  
**137-385-300**

*5 HP*  
*Single Speed TRANSMISSION*  
*TIRES - F 10.25" x 3.25"*  
*R. 13.00" x 5.00"*  
*Disc Brakes*

## Important:

**Read Safety Rules and  
Instructions Carefully**

# 26" RIDING MOWERS



# **IMPORTANT**

It is suggested that this manual be read in its entirety before attempting to assemble or operate. Keep this manual in a safe place for future reference and for ordering replacement parts.

This unit is shipped WITHOUT GASOLINE or OIL. After assembly, see operating section of this manual for proper fuel and amount.

Your rotary mower is a precision piece of power equipment, not a plaything. Therefore exercise extreme caution at all times.

## **SAFE OPERATION PRACTICES FOR RIDING VEHICLES**

1. Know the controls and how to stop quickly—**READ THE OWNER'S MANUAL.**
2. Do not allow children to operate vehicle. Do not allow adults to operate it without proper instruction. Only persons well acquainted with these rules of safe operation should be allowed to use your mower.
3. Do not carry passengers.
4. Keep the area of operation clear of all persons, particularly small children and pets. Stop engine when they are in the vicinity of your mower. Although the area of operation should be completely cleared of foreign objects, a small object may have been overlooked and could be accidentally thrown by the mower in any direction.
5. Clear work area of objects which might be picked up and thrown by the mower in any direction.
6. Disengage all attachment clutches and shift into neutral before attempting to start engine.
7. Disengage power to attachment(s) and stop engine before leaving operator position.
8. Disengage power to attachment(s) and stop engine before making any repairs or adjustments. Disconnect the spark plug wire and keep the wire away from the plug to prevent accidental starting.
9. Before attempting to unclog the mower or discharge chute, stop the engine and be sure the blade(s) have stopped completely. Disconnect the spark plug wire and keep the wire away from the plug to prevent accidental starting.
10. Disengage power to attachment(s) when transporting or not in use.
11. Take all possible precautions when leaving vehicle unattended such as disengaging power-take-off, lowering attachments, shifting into neutral, setting parking brake, stopping engine and removing key.
12. Do not stop or start suddenly when going uphill or downhill. Mow up and down face of steep slopes; never across the face.
13. Reduce speed on slopes and in sharp turns to prevent tipping or loss of control. Exercise extreme caution when changing direction on slopes.
14. Stay alert for holes in terrain and other hidden hazards.
15. Use care when pulling loads or using heavy equipment.
  - A. Use only approved drawbar hitch points.
  - B. Limit loads to those you can safely control.
  - C. Do not turn sharply. Use care when backing.
- D. Use counterweight(s) or wheel weights when suggested in owner's manual.
16. Watch out for traffic when crossing or near roadways.
17. When using any attachments never direct discharge of material toward bystanders nor allow anyone near vehicle while in operation.
18. Handle gasoline with care—it is highly flammable.
  - A. Use approved gasoline container.
  - B. Never remove cap or add gasoline to a running or hot engine or fill fuel tank indoors. Wipe up spilled gasoline.
  - C. Open doors if engine is run in garage—exhaust fumes are dangerous. Do not run engine indoors.
19. Keep the vehicle and attachments in good operating condition, and keep safety devices in place. Use guards as instructed in owner's manual.
20. Keep all nuts, bolts, and screws tight to be sure the equipment is in safe working condition.
21. Never store the equipment with gasoline in the tank inside a building where fumes may reach an open flame or spark. Allow engine to cool before storing in any enclosure.
22. To reduce fire hazard keep engine free of grass, leaves or excessive grease.
23. The vehicle and attachments should be stopped and inspected for damage after striking a foreign object, and the damage should be repaired before restarting and operating the equipment.
24. Do not change the engine governor settings or overspeed the engine.
25. When using the vehicle with mower, proceed as follows:
  - (1) Mow only in daylight or in good artificial light.
  - (2) Never make a cutting height adjustment while engine is running if operator must dismount to do so.
  - (3) Shut the engine off and wait until the blade comes to a complete stop before removing the grass catcher.
  - (4) Check blade mounting bolts for proper tightness at frequent intervals.
26. Check grass catcher bags frequently for wear or deterioration. For safety protection replace only with new bag meeting original equipment specifications.
27. Look behind to make sure the area is clear before placing the transmission in reverse and backing up.

# INDEX

Safe Operating Practices.....	2	Transmission Breakdown.....	17
Index and Assembly Instructions.....	3	Exploded View of Rider.....	18
Activating the Battery.....	4	Parts List for Rider.....	19
Operating.....	6	Exploded View of Frame.....	20
Lubrication.....	8	Parts List for Frame.....	21
Adjustments.....	9	Exploded View of Deck and Belts.....	22
Belt Removal.....	11	Parts List for Deck and Belts.....	23
Trouble Shooting Chart.....	14	Deck Linkage.....	24
Electrical Diagram.....	15	Parts Information.....	Back Cover
Differential Breakdown.....	16		

GRASS CATCHER Model No. 197-015A is available as optional equipment for the mowers shown in this manual.



**WARNING**

The mower should not be operated without the entire grass catcher or chute deflector in place.



**NOTE**

Under normal usage bag material is subject to wear, and should be checked periodically. Be sure any replacement bag complies with the mower manufacturer's recommendations.

For replacement bags, use only factory authorized replacement bag No. 764-0121.



**IMPORTANT**

After striking a foreign object, stop the engine. Remove wire from spark plug, thoroughly inspect the mower for any damage, and repair the damage before restarting and operating the mower.

The steering wheel and seat, with the necessary hardware, are easily assembled to the machine. On the electric starter models, the battery must be activated and installed as outlined in this section.

## TIRE PRESSURE

**FOR SHIPPING PURPOSES, THE TIRES ON YOUR UNIT MAY BE OVER-INFLATED. TIRE PRESSURE SHOULD BE REDUCED BEFORE UNIT IS PUT INTO OPERATION. PRESSURE SHOULD BE APPROXIMATELY 15 P.S.I. EQUAL TIRE PRESSURE SHOULD BE MAINTAINED ON ALL TIRES. MAXIMUM TIRE PRESSURE IS 30 P.S.I.**



**CAUTION**

Installation of tire to rim:

1. Lubricate tire beads and rim flanges.
2. Do not exceed 30 P.S.I. when seating beads.
3. Adjust to recommended pressure after beads are sealed.

## ASSEMBLY



**NOTE**

Reference to right hand or left hand side of machine is from the driver's seat facing forward.

### Attaching Steering Wheel

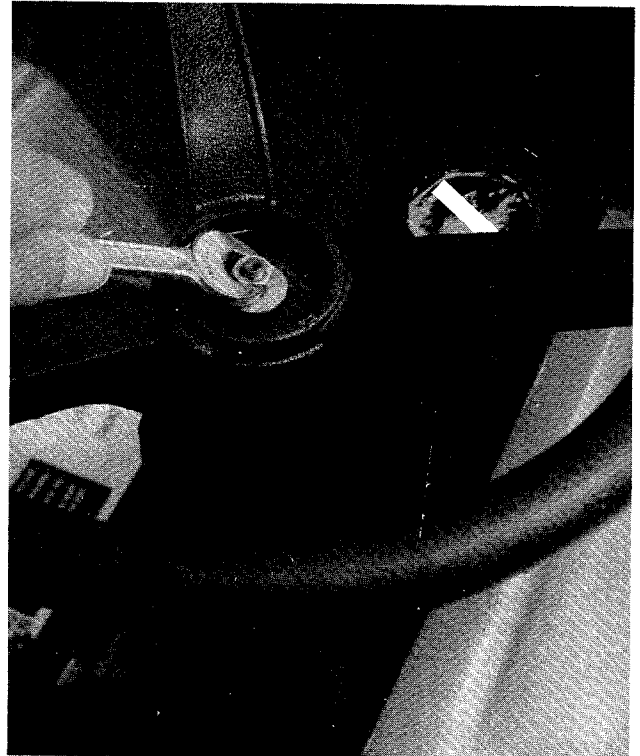


Figure 1.

1. Place the steering wheel over the steering column extending through the dash. Line up the flats on the steering column with the flats in the steering wheel. (See figure 1.)
2. Place the washer with the cupped side down over the steering column and secure.
3. Place the cap over the center of the steering wheel and seat it with your hand.

### Seat Assembly

Use the hex nut and lockwasher to attach the seat to the seat spring in one of the three adjustment holes. (See figure 2.)

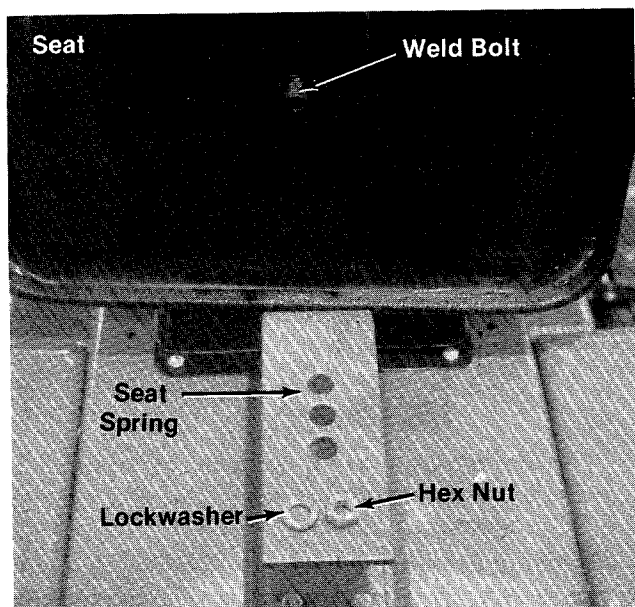


Figure 2.

## BATTERY INFORMATION FOR ELECTRIC START MODELS



**WARNING**

- A. Battery acid must be handled with great care as it will blister the skin and damage clothing. It is advisable to wear goggles, rubber gloves, and a protective apron when working with it.
- B. Neutralize acid spilled on clothing with dilute ammonia water or a water solution of baking soda. If acid gets on clothes, dilute it with clean water first, then neutralize.
- C. If for any reason acid should be spattered in the eyes, wash it out immediately with clean cold water. Seek medical aid if discomfort continues.

- D. Since battery acid is corrosive to metals, do not pour into any sink or drain. Rinse empty electrolyte containers and mutilate before discarding.



**DANGER**

**BATTERIES CONTAIN SULFURIC ACID AND MAY CONTAIN EXPLOSIVE GASES (when electrolyte has been added)**

- A. Keep sparks, flame, cigarettes away.
- B. Hydrogen gas is generated during charging and discharging.
- C. Ventilate when charging or using in enclosed space.
- D. When using a charger—to avoid sparks—NEVER connect or disconnect charger clips to battery while charger is turned on.
- E. Always shield eyes, protect skin and clothing when working near batteries.

### A. Activating the Battery

1. Place the battery to be filled on bench or workbench. NEVER activate battery in unit. Remove vent caps from all cells.
2. Fill each cell carefully using battery grade 1.250-1.265 specific gravity. Sulfuric acid to be 3/8" above the top of the separators or to the split ring.
3. Allow battery to set for 20 minutes to 1/2 hour. Add additional acid if necessary to bring it up to the proper level.
4. Replace the vent caps.
5. The battery can now be charged after the 20 minutes setting period. Battery can be SLOW CHARGED (DO NOT FAST CHARGE) at a maximum bench rate of 4-5 amperes until the specific gravity reading is 1.265-1.275. A charging rate in excess of this will buckle and warp the positive plates and perforate the separators. If electrolyte bubbles violently while charging, reduce charging rate until excessive bubbling action subsides, then continue charging until specific gravity is reached.



**CAUTION**

After battery has been in service, add only approved water. DO NOT ADD ACID.

### B. To Install Battery

To install the battery in this unit, refer to page 5.

### C. Maintenance

1. Check periodically (every two weeks or before and after charging) to be sure electrolyte level is 9/16" above separator plates. Add only distilled water or good quality drinking water. NEVER add additional acid or other chemicals to battery after initial activation.
2. The battery should be checked with a hydrometer after every 25 hours of operation. If the specific gravity is less than 1.225 remove battery and recharge.
3. Coat the terminals and exposed wiring with a thin coat of grease or petroleum jelly for longer service and protection against electrolyte corrosion.
4. The battery should be kept clean. Any deposits of acid should be neutralized with soda and water. Be careful not to get this solution in the cells.

### D. Storage

1. Charge battery using normal methods. NEVER store discharged battery as it will not recover.
2. Store in cold, dry place.
3. Recharge battery whenever the specific gravity is less than 1.225 before returning to service or every two months, whichever occurs first.

### E. Common Causes for Battery Failure Are:

1. Overcharging
2. Undercharging
3. Lack of water
4. Loose hold downs and/or corroded connections
5. Excessive loads
6. Battery electrolyte substitutes
7. Freezing of electrolyte



#### NOTE

THESE FAILURES DO NOT CONSTITUTE WARRANTY.

#### LIMITED WARRANTY

For ninety (90) days of original retail purchase, the battery carries a limited warranty against faulty material or workmanship by the battery manufacturer.

### Installing the Battery

1. Place the battery in the battery case with the terminals to the front of the rider. (See figure 3.)



#### NOTE

The positive battery terminal is marked Pos. (+). The negative battery terminal is marked Neg. (-).

2. Hook the hold down rods under the battery case and place the hold down over both rods.
3. Secure the hold down with the wing nuts and washers. Tighten hand tight. (See figure 4.)

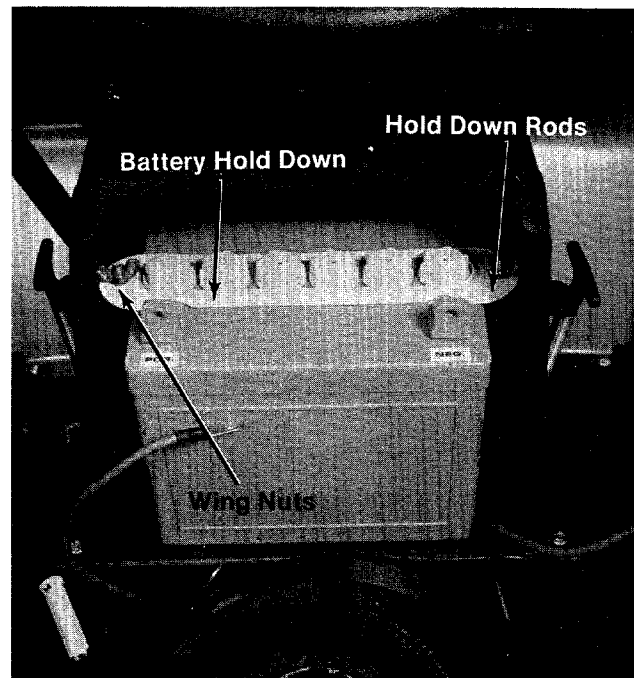


Figure 3.

4. Attach the positive cable (from the starter switch) and the small wire (from the ammeter) to the positive battery terminal with the bolt, lockwasher and nut in the assembly pack. (See figure 4.)

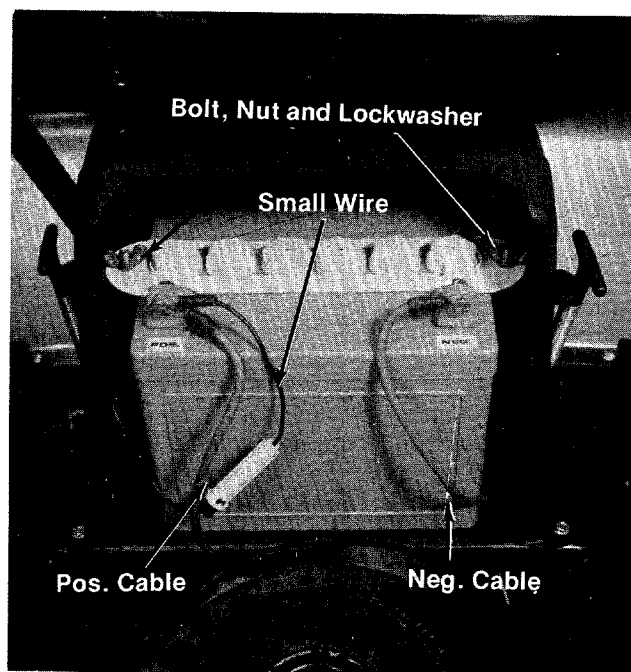
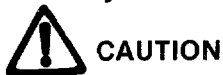


Figure 4.

5. Attach the negative cable, grounded, to the negative battery terminal with the bolt, lockwasher and nut in the assembly pack.

# OPERATION

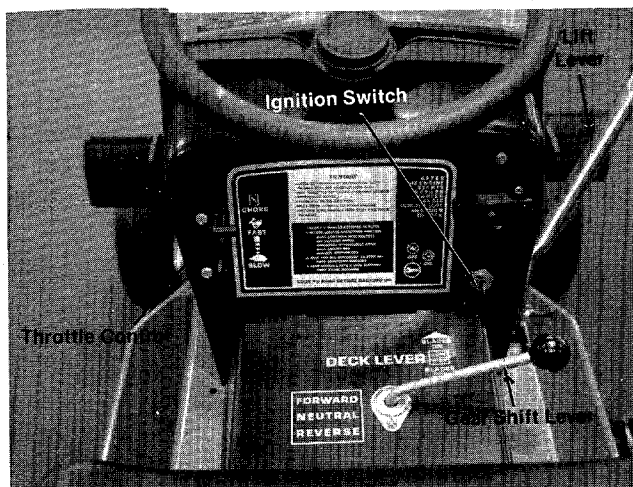
Read and Heed Safety Rules on page 2.



**CAUTION**

1. Keep all shields and guards in place.
2. Before leaving operator's position:
  - Shift transmission in neutral
  - Set the parking brake
  - Disengage the blade engagement lever
  - Shut off engine
  - Remove ignition key
3. Wait for all movement to stop, remove and ground the spark plug wire to the engine block before servicing the machine.
4. Keep people and pets a safe distance away from the machine.

Before starting the engine fill the crankcase with oil. Refer to the Engine Operation and Maintenance Manual.



**Figure 5.**

## Ignition Switch

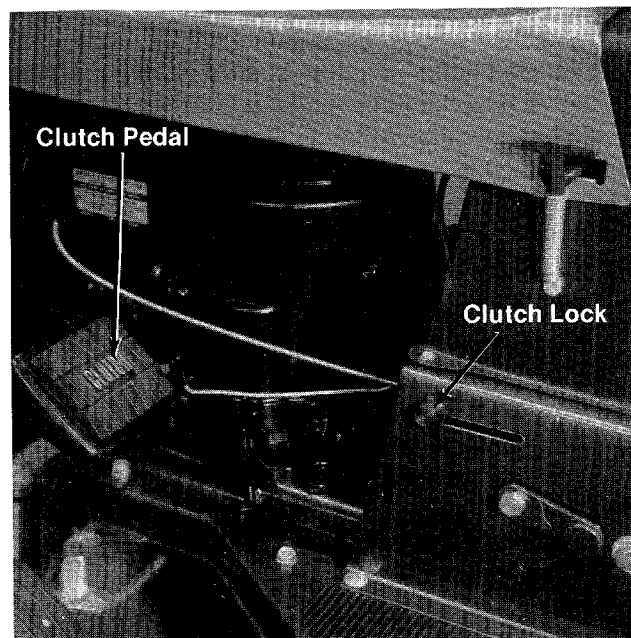
The ignition switch is located on the right side of the dashboard. Turn the key to the START position to start the engine. When the engine is running leave the key in the ON position. To stop the engine turn the key to the OFF position.



**CAUTION**

Remove the key from the riding mower when the mower is not in use to prevent accidental starting.

## Gear Shift Lever



**Figure 6.**

The reversing transmission has a forward gear, reverse gear and a neutral position. You must depress the clutch pedal when you stop and when you shift from neutral into either forward or reverse gear.



**CAUTION**

Do not force the shift lever.

If the gear shift lever does not easily move into either the forward or reverse gear it may be necessary to release the clutch pedal slightly until the gear shift lever moves easily into gear. (See figure 5.)

## Clutch Lock

When the clutch pedal is depressed all the way it can be locked by lifting up the lock button. The pedal will stay depressed. To release, depress the clutch pedal. (See figure 6.)

## Clutch Pedal

The clutch pedal is located on the left side of the mower and is used to disengage the drive mechanism. Depressing the clutch pedal will disengage the engine from the drive train. The clutch pedal must be depressed when you come to a stop. (See figure 6.)

## Brake Pedal

The brake pedal is located on the right side of the mower and is operated by depressing it with your right foot. When coming to a complete stop it is necessary to depress both the clutch and the brake pedals. (See figure 7.)

## Brake Lock

The brake lock is located on the right side of the mower. To lock the brake, depress the brake pedal and lift up the lock button. The pedal will stay depressed. To release, depress the pedal. (See figure 7.)

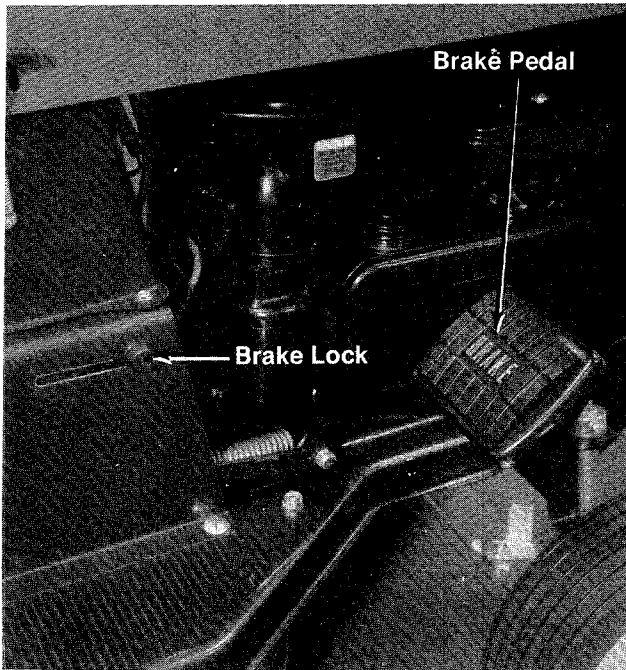


Figure 7.

## Lift Lever

The lift lever is used to adjust the cutting deck and engage the drive mechanism. Pulling it all the way back and locking it disengages the blades. The engine will not start unless the lift lever is in the disengaged position. (See figure 7.)

## Setting the Cutting Height

1. Remove the two deck wheels by unscrewing the axle bolts. (See figure 8.)
2. Using the height of cut stop, set the cutting height lever in the desired position. (See figure 9.)
3. Move the lift lever forward until it rests against the height of cut stop.
4. Reassemble the deck wheels to one of the four wheel positions on the cutting deck. Use the lowest hold you can without letting the deck wheels touch the ground.



If you want to let the deck follow the exact contour of the ground, use the two deck wheels to set the cutting height and move the height of cut stop lever all the way forward.

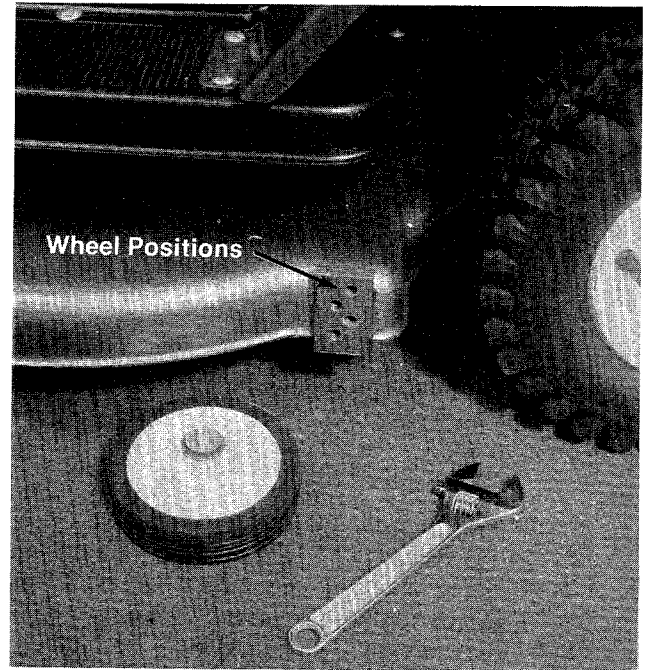


Figure 8.

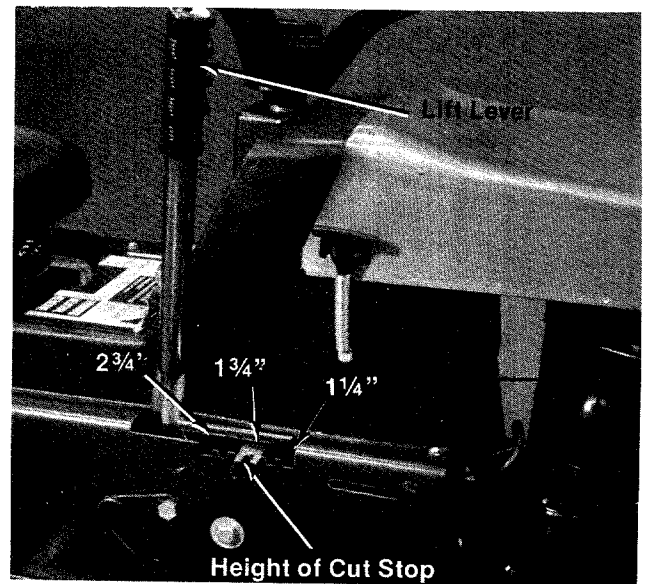


Figure 9.

Maintenance and adjustments for the engine are covered in the Engine Operating and Maintenance Instructions section of this handbook.

# LUBRICATION

1. **Front Wheel Bearings (4).** Lubricate with SAE 30 oil once a season or after every 25 hours of operation. (See figure 10.)
2. **King Pin Bearings (4).** Lubricate with SAE 30 oil once a season or after every 25 hours of operation. (See figure 10.)
3. **Steering Gears.** Lubricate the two gears with automotive multi-purpose grease once a season. (See figure 11.)
4. **Pivot Bolt.** Lubricate with SAE 30 oil once a season. (See figure 10.)
5. **Deck Wheel Bearings (4).** Remove the axle bolt and lubricate with multi-purpose automotive grease once a season or after every 25 hours of operation. (See figure 12.)
6. **Differential.** Lubricated at the factory with 2 ounces of high temperature grease (450°F.) The grease should only be checked or replaced if the differential is disassembled for repair. (See figure 13.)
7. **Transmission.** Lubricated at the factory with 12 ounces of E.P. Lithium grease. The grease should only be checked or replaced if the transmission is disassembled for repair.

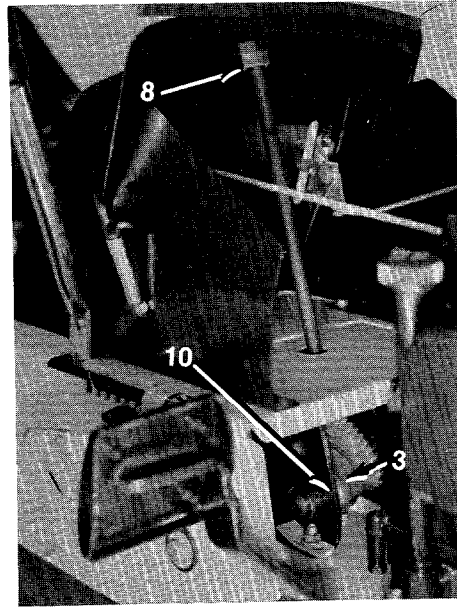


Figure 11.

11. **Chain.** Remove and clean with kerosene. Lubricate with an oil soaked rag. (See figure 13.)

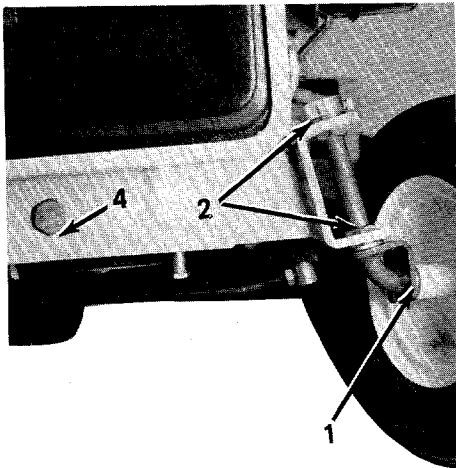


Figure 10.

8. **Steering Column Bearings (2).** Oil once a season with SAE 30 oil. (See figure 11.)
9. **Rear Axle Bearings (3).** Requires no lubrication. (See figure 13.)
10. **Steering Shaft Bearings (2).** Requires no lubrication. (See figure 11.)

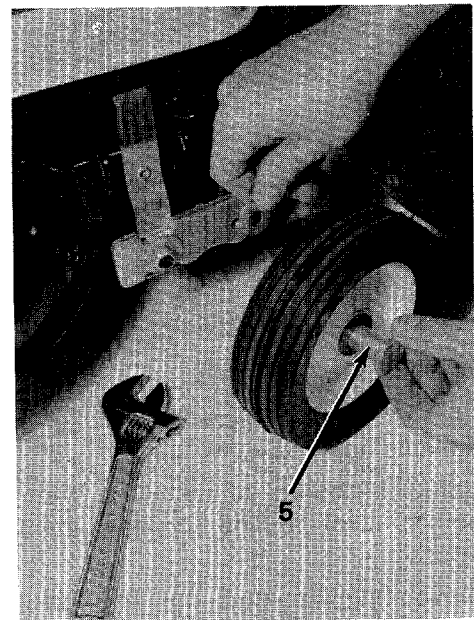


Figure 12.



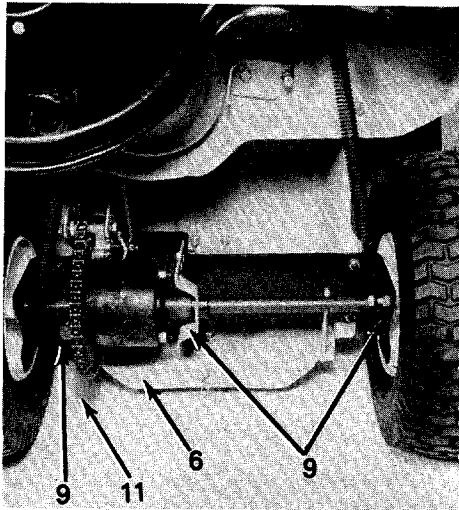


**WARNING**

Do not get oil on the sprocket or brake pads.

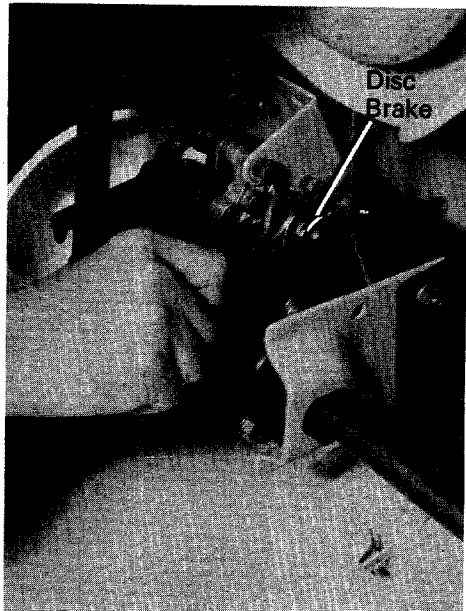
The following items have sealed bearings and require no further lubrication.

- Blade Spindle Bearings
- Tie Rod Ends
- Idler Bearings



**Figure 13.**  
**BRAKE ADJUSTMENT**

The disc brake assembly is located on the rear axle. Before adjusting the brake it is necessary to loosen the jam nut on the center stud. To adjust, tighten the locknut one half turn and then test the brakes. Repeat if necessary. Tighten the jam nut. (See figure 14.)

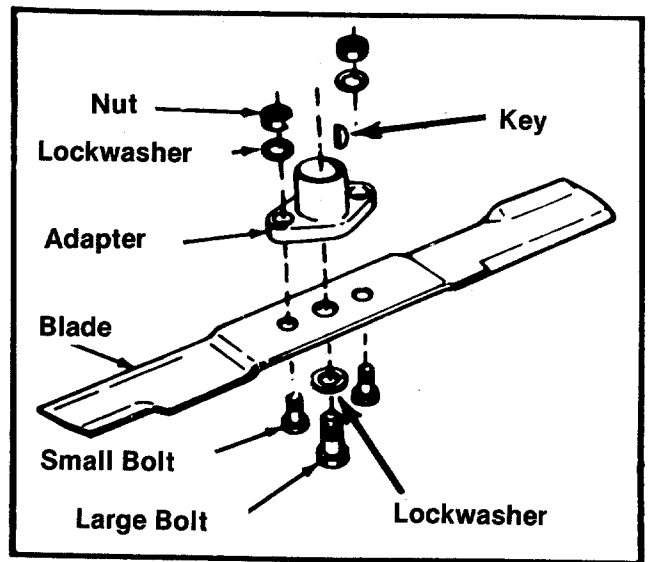


**Figure 14.**

**CUTTING BLADES**

The blades may be removed for sharpening or replacement as follows:

1. Remove the large bolt and lockwasher holding the blade and adapter to the engine blade spindle. (See figure 15.)
2. Remove the blade and adapter from the blade spindle.
3. Be careful not to lose the key on the spindle.
4. Remove the two small bolts, lockwashers and nuts holding the blade to the adapter.



**Figure 15.**

When sharpening the blade, follow the original angle of grind as a guide. It is extremely important that each cutting edge receives an equal amount of grinding to prevent an unbalanced blade. An unbalanced blade will cause excessive vibration when rotating at high speeds and may cause damage to the mower.

When grinding or filing the blade, remove equal amounts of metal from both edges to keep the blade in balance. The blade can be tested for balance by balancing it on a screwdriver. Remove metal from the heavy side until it balances evenly. (See figure 16.)

When replacing the blade be sure the side of the blade marked "Bottom" or having the part number is facing the ground when the mower is in the operating position.

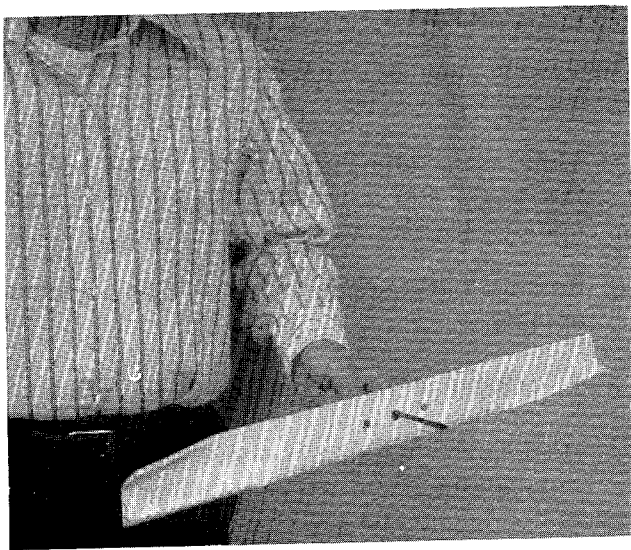


Figure 16.

### CHAIN ADJUSTMENT

After the first five hours of operation the initial slack should be removed from the chain. The chain should be tight enough so that it deflects approximately 1/2 inch when it is depressed with the thumb.

1. To tighten the chain, loosen the two locking nuts on each side of the rear axle. (See figure 17.)
2. Tighten the adjusting nuts at corners of rear chassis until you have the proper chain tension.
3. Tighten the locking nuts on the rear axle.

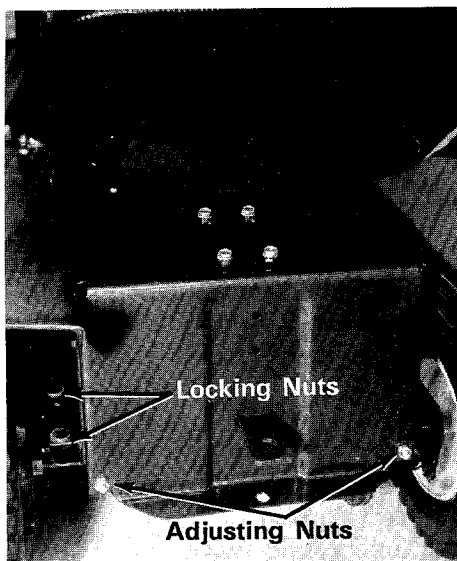


Figure 17.

### WHEEL ALIGNMENT

The caster (forward slant of the king pin) and the camber (tilt of the wheels out at the top) requires no adjustment. Automotive steering principles have been used to determine the caster and camber on the mower. The front wheels should toe-in 1/8 inch. (See figure 18.)

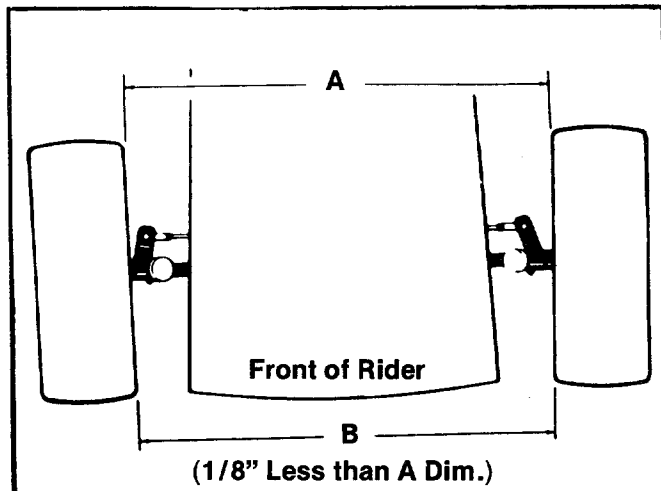


Figure 18.

### TO ALIGN THE WHEELS

1. Remove the cotter pin holding the ferrule to the front axle assembly. (See figure 19.)
2. Loosen the locknut.
3. Screw the ferrule in or out until the proper adjustment is made.
4. Place the ferrule back into the front axle assembly and secure it with the cotter pin and tighten the locknut.

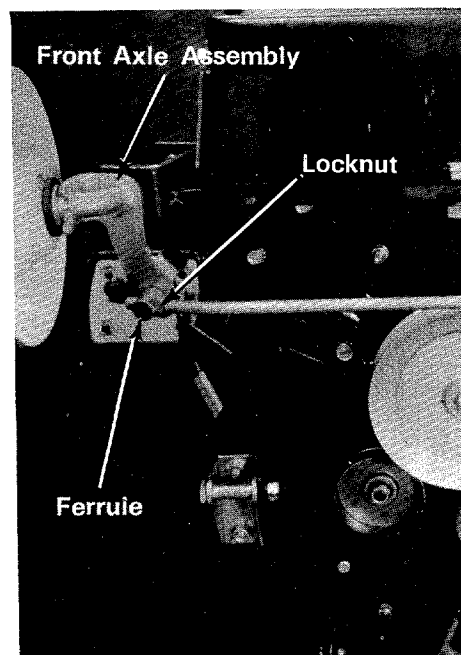


Figure 19.

## BELTS REMOVAL AND REPLACEMENT



**WARNING**

Before up-ending vehicle for maintenance, position it on a hard level surface and ensure area is clear of children and pets.

Disconnect the spark plug wire and ground it against the engine.

To prevent gasoline from leaking from the gasoline tank, remove the cap, place a piece of plastic film over the neck of the tank and screw on the cap or drain tank.

1. Put the lift lever in the disengaged position.
2. Remove the belt keeper and shoulder bolt on the engine pulley. (See figure 20.)
3. Remove the blade belt from the engine pulley.
4. Put the lift lever in the engaged position.
5. Remove the two tension springs on the rear of the deck.
6. Remove the six pins holding the deck to the frame. (See figure 21.)
7. Lift off the deck and set it aside.

### BLADE BELT (See figure 22.)

1. Take off both belt guards on the deck.
2. Remove and replace the belt with a new one.

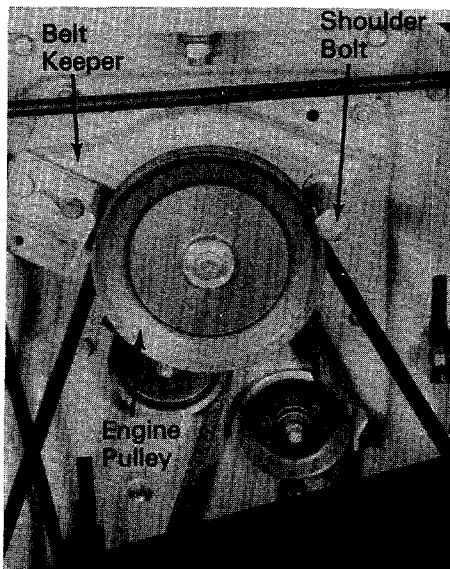


Figure 20.

### TRANSMISSION BELT (See figure 21.)

1. Remove the entire belt guard from the engine pulley by removing the two front engine bolts.
2. Remove the two belt guards from the transmission pulley.
3. Remove the V-idler pulley.
4. Remove and replace the transmission pulley.

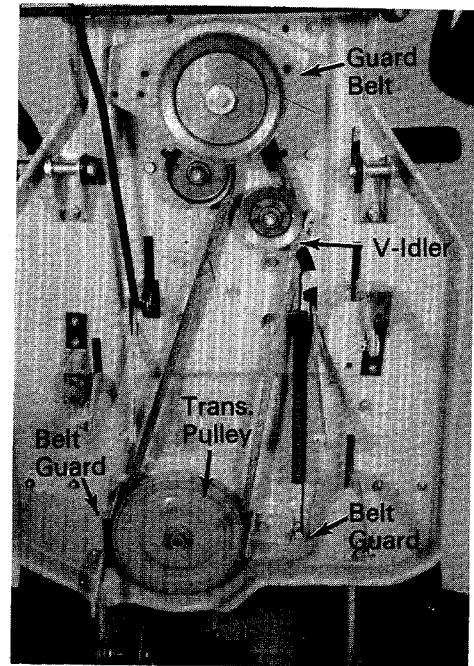


Figure 21.

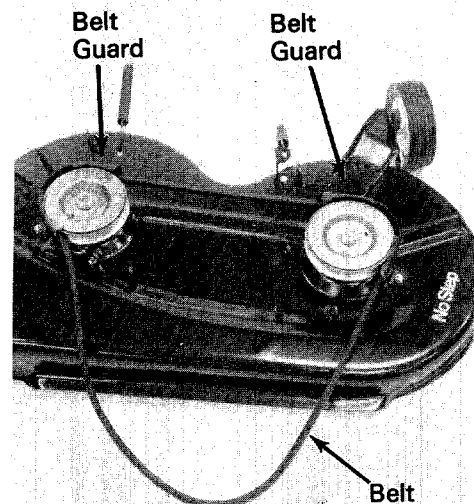


Figure 22.

# OFF-SEASON STORAGE OF RIDER MOWER

If the machine is to be inoperative for a period longer than 30 days, the following procedures are recommended:



Do not drain fuel while smoking, or if near an open fire.

1. Working outdoors, drain all fuel from the fuel tank. Use a clean dry cloth to absorb the small amount of fuel remaining in the tank, then run the engine until all fuel in the carburetor is exhausted.

2. Drain all the oil from the crankcase (this should be done after the engine has been operated and is still warm) and refill the crankcase with clean new oil.
3. Disconnect the spark plug wire and remove the spark plug from the cylinder. Pour about 2 or 3 tablespoons of engine oil into the cylinder through the spark plug hole, and then turn the engine over several times to spread out the oil. Replace the spark plug, but do not connect the wire.
4. Clean the engine and the entire mower thoroughly.

## TROUBLESHOOTING

Refer to the chart on page 14.

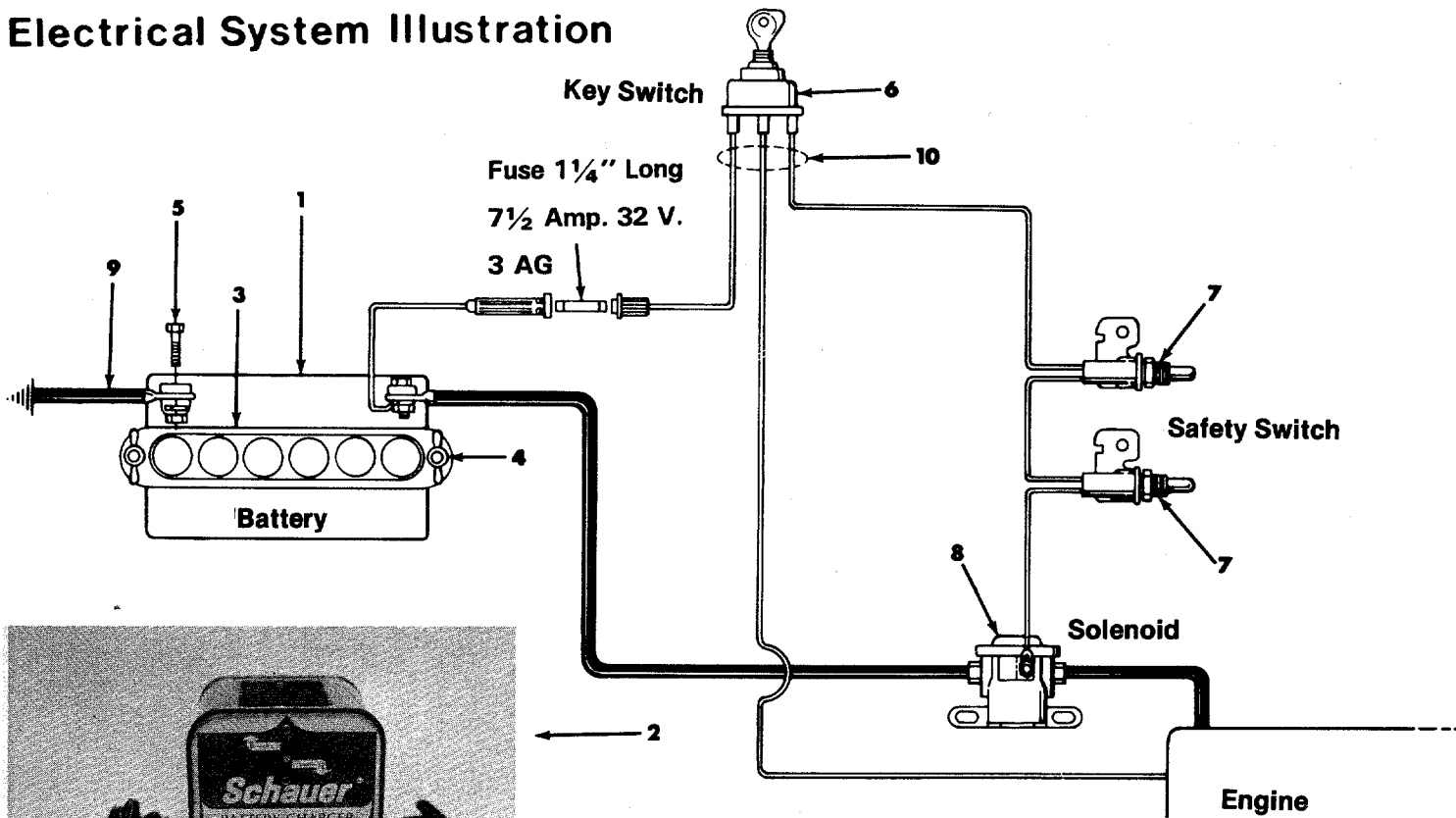
# NOTES

A large, empty rectangular box with a black border, occupying most of the page. It is intended for the user to write their notes. There are three binder holes visible on the left side of the page.

# Trouble Shooting Chart

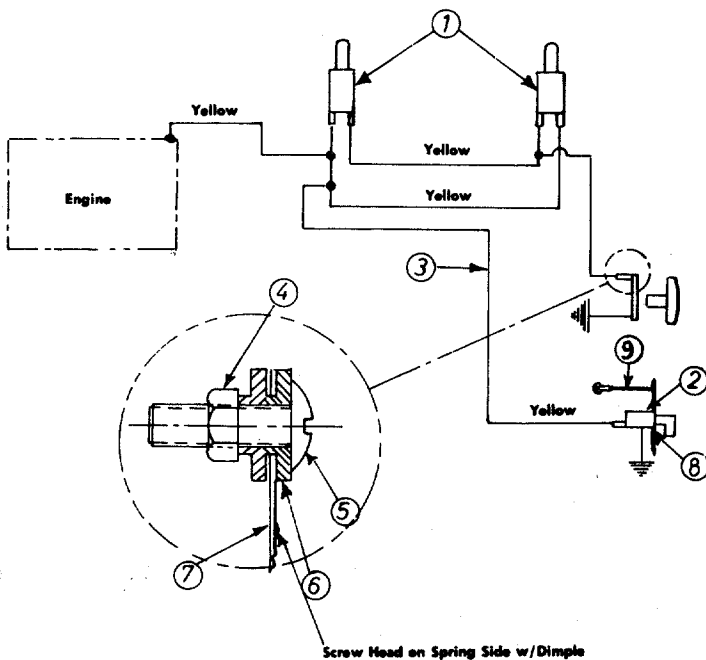
Problem	Cause	Remedy
1 Engine fails to start	<p><b>A</b> Check fuel tank for gas</p> <p><b>B</b> Spark plug lead wire disconnected</p> <p><b>C</b> Throttle control lever not in the starting position</p> <p><b>D</b> Faulty spark plug</p> <p><b>E</b> Carburetor improperly adjusted Engine flooded</p>	<p><b>A</b> Fill tank if empty</p> <p><b>B</b> Connect lead wire</p> <p><b>C</b> Move throttle lever to start position.</p> <p><b>D</b> Spark should jump gap between control electrode and side electrode. If spark does not jump, replace the spark plug.</p> <p><b>E</b> Remove spark plug, dry the plug, crank engine with plug removed, and throttle in off position. Replace spark plug and lead wire and resume starting procedures.</p>
2 Hard starting or loss of power	<p><b>A</b> Spark plug wire loose</p> <p><b>B</b> Carburetor improperly adjusted</p> <p><b>C</b> Dirty air cleaner</p>	<p><b>A</b> Connect spark plug wire</p> <p><b>B</b> Adjust carburetor. See engine manual.</p> <p><b>C</b> Clean air cleaner as described in the Engine manual.</p>
3 Operation erratic	<p><b>A</b> Dirt in gas tank</p> <p><b>B</b> Dirty air cleaner</p> <p><b>C</b> Water in fuel supply</p> <p><b>D</b> Vent in gas cap plugged</p> <p><b>E</b> Carburetor improperly adjusted</p>	<p><b>A</b> Remove the dirt and fill tank with fresh gas</p> <p><b>B</b> Clean air cleaner as described in the engine manual.</p> <p><b>C</b> Drain contaminated fuel and fill tank with fresh gas.</p> <p><b>D</b> Clear vent or replace gas cap</p> <p><b>E</b> Adjust carburetor. See engine manual.</p>
4 Occasional skip (hesitates) at high speed	<p><b>A</b> Carburetor idle speed too slow</p> <p><b>B</b> Spark plug gap too close</p> <p><b>C</b> Carburetor idle mixture adjustment improperly set</p>	<p><b>A</b> Adjust carburetor. See engine manual.</p> <p><b>B</b> Adjust to .030"</p> <p><b>C</b> Adjust carburetor. See engine manual.</p>
5 Idles poorly	<p><b>A</b> Spark plug fouled, faulty, or gap too wide.</p> <p><b>B</b> Carburetor improperly adjusted</p> <p><b>C</b> Dirty air cleaner</p>	<p><b>A</b> Reset gap to .030" or replace spark plug</p> <p><b>B</b> Adjust carburetor. See engine manual.</p> <p><b>C</b> Clean air cleaner as described in the engine manual.</p>
6 Engine overheats	<p><b>A</b> Carburetor not adjusted properly</p> <p><b>B</b> Air flow restricted</p> <p><b>C</b> Engine oil level low</p>	<p><b>A</b> Adjust carburetor. See engine manual.</p> <p><b>B</b> Remove blower housing and clean as described in the engine manual.</p> <p><b>C</b> Fill crankcase with the proper oil</p>
7 Excessive vibration	<p><b>A</b> Cutter blade loose or unbalanced</p>	<p><b>A</b> Tighten blade and adapter.</p>

# Electrical System Illustration



## PARTS LIST FOR SCHEMATIC MODEL 137-385A

REF. NO.	PART NO.	DESCRIPTION	NEW PART
1	725-0117	Battery	
2	725-0156	Battery Charger	
3	08821	Battery Hold Down	
4	711-0222	Hold Down Rods	
	736-0329	Lockwasher 1/4"*	
	712-0113	Wing Nuts 1/4-20 Thd.*	
5	710-0258	Hex Hd. Cap Scr. 1/4-20 x 5/8 Lg.*	
	736-0329	Lockwasher 1/4" *	
	712-0287	Hex Nut 1/4-20 Thd.*	
6	725-0267	Ignition Switch	
	725-0201	Ignition Key	
7	725-0268	Safety Switch	
8	725-0530	Solenoid	N
9	725-0150	Ground Wire	
10	725-0489	Wire Harness	
11	725-0221	Electric Wire	
12	725-0297	Electric Wire	

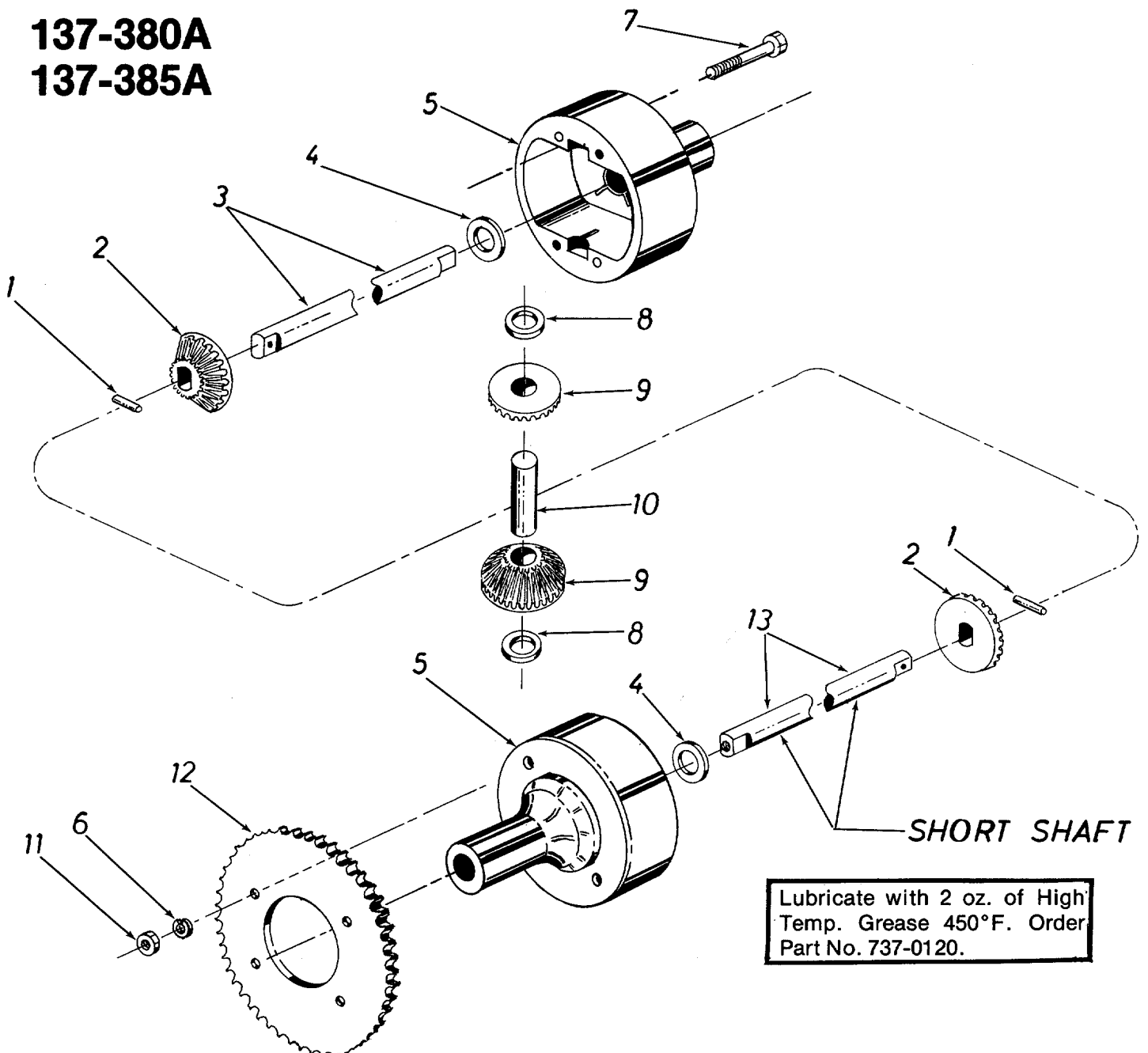


## PARTS LIST FOR SCHEMATIC MODEL 137-380A

REF. NO.	PART NO.	DESCRIPTION	NEW PART
1	725-0269	Safety Switch—Red (2 Req'd.)	
2	725-0266	Magneto Ignition Switch w/ Nut	
	725-0128	Ignition Key	
3	725-0272	Wire Harness	
4	712-0121	Hex Nut #10-24	
5	710-0425	Truss Mach. Scr. #10-24 x .62	
6	736-0338	Fiber Washer (2 Req'd.)	
7	736-0257	Switch Spring	
8	736-0225	Internal Lockwasher 5/8 I.D.	
9	725-0297	Ground Wire	

\*For faster service obtain standard nuts, bolts and washers locally. If these items cannot be obtained locally, order by part number and size as shown on parts list.

**137-380A**  
**137-385A**



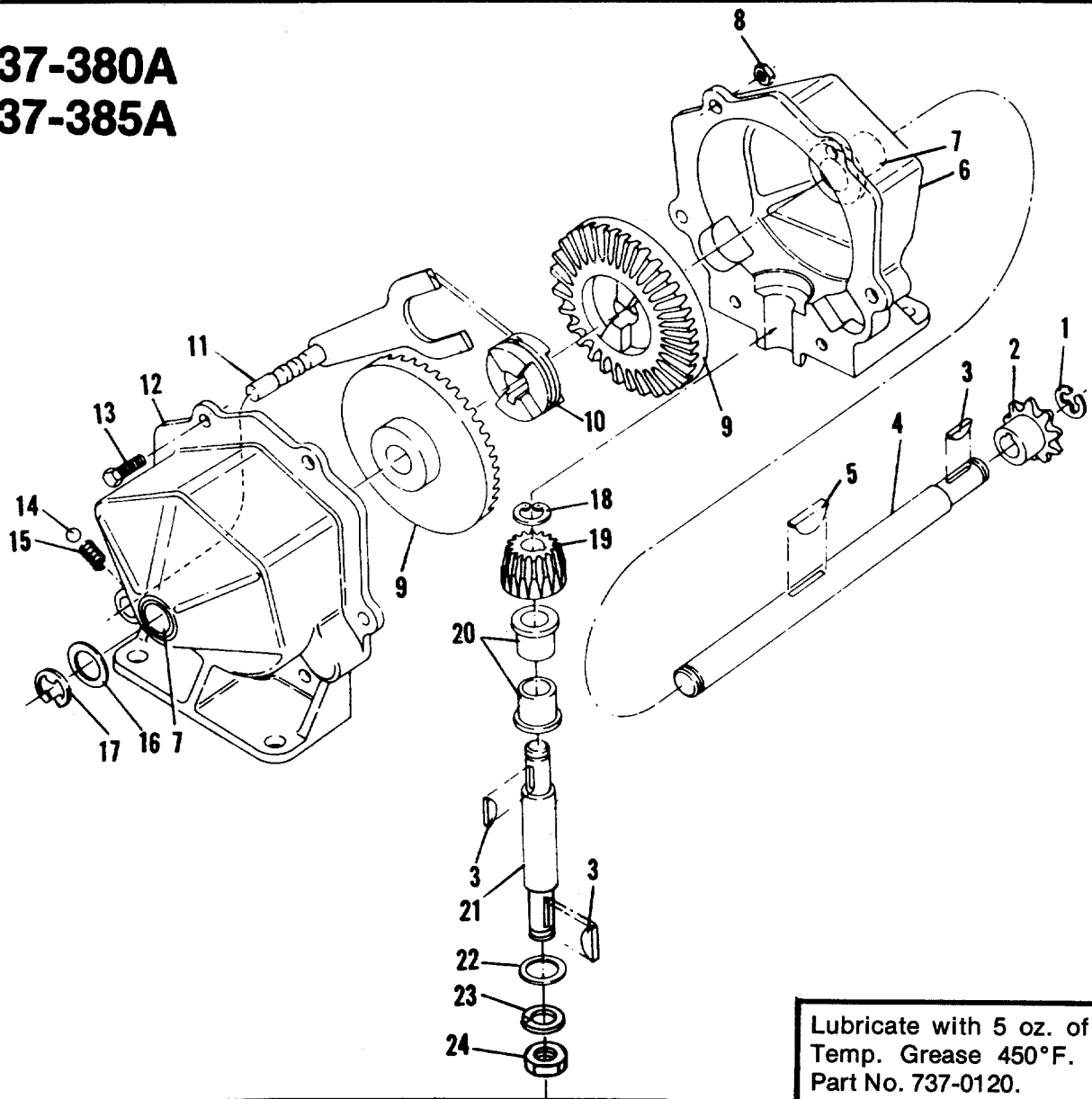
Lubricate with 2 oz. of High Temp. Grease 450°F. Order Part No. 737-0120.

**PARTS LIST FOR DIFFERENTIAL ASSEMBLY 717-0326**

REF. NO.	PART NO.	QTY REQ'D	DESCRIPTION	NEW PART
1	715-0247	2	Spring Pin Spir. 3/16" Dia. x 1.00" Lg.	
2	748-0185	2	Gear—Double "D" Hole	
3	738-0302	1	Shaft—Long 15.11" Lg.	
4	736-0188	2	FI-Wash. .760 I.D. x 1.49 O.D.	
5	717-0341	2	Housing Half	
6	736-0119	2	L-Wash. 5/16" Scr.*	
7	710-0363	2	Hex Scr. 5/16-24 x 4.00" Lg.*	
8	736-0187	2	FI-Wash. .640 I.D. x 1.24 O.D.	
9	748-0158	2	Gear—Round Hole	
10	711-0276	1	Drive Pin	
11	712-0237	2	Hex Cent. L-Nut 5/16-24 Thd.	
12	09054	1	Sprocket—40 Tooth	
13	738-0303	1	Shaft—Short 7.58" Lg.	



**137-380A**  
**137-385A**



**SINGLE SPEED TRANSMISSION PART NO. 717-0222**

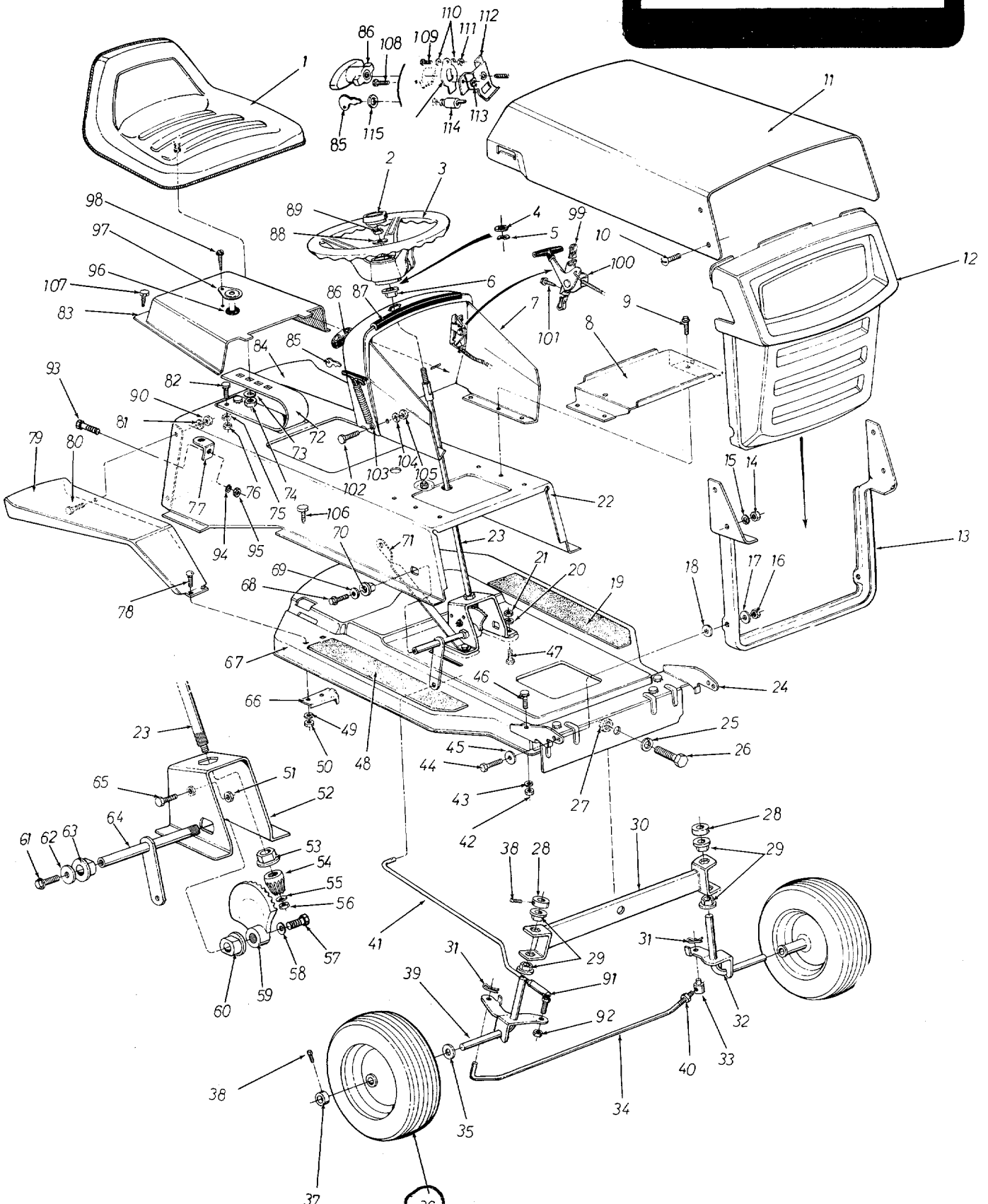
**PARTS LIST FOR SINGLE SPEED TRANSMISSION PART NO. 717-0222**

REF. NO.	PART NO.	COLOR CODE	DESCRIPTION	NEW PART	REF. NO.	PART NO.	COLOR CODE	DESCRIPTION	NEW PART
1	716-0104		Snap Ring		13	710-0195		Hex Hd. Cap Scr. ¼-28 x .62*	
2	748-0204		Sprocket 8T #41		14	741-0862		Detent Ball	
3	714-0129		Key Hi-Pro #4		15	732-0863		Detent Spring	
4	711-0854		Shaft Output		16	736-0116		Washer	
5	714-0126		Key Hi-Pro #606 (Hardened)		17	716-0106		E-ring	
6	717-0123		Housing Half		18	716-0865		Snap Ring #3100-50	
7	748-0855		Bearing		19	748-0866		Bevel Pinion	
8	712-0117		Locknut ¼-28 Thd.*		20	748-0867		Bearing	
9	748-0856		Bevel Gear		21	738-0159		Pinion Shaft	
10	748-0857		Clutch Collar		22	736-0192		Washer	
11	08583		Detent Shaft Assembly		23	736-0921		Lockwasher ½**	
12	717-0124		Housing Half with Detent Hole		24	712-0922		Hex Jam Nut ½-20 Thd.*	

\*For faster service, obtain standard nuts, bolts and washers locally. If these items cannot be obtained locally, order by part number and size, as shown on parts list.

# 137-380A 137-385A

IF YOU WRITE TO US ABOUT THIS ARTICLE  
OR IF YOU ORDER REPLACEMENT PARTS AL-  
WAYS MENTION THIS MODEL & SERIAL NO  
MODEL

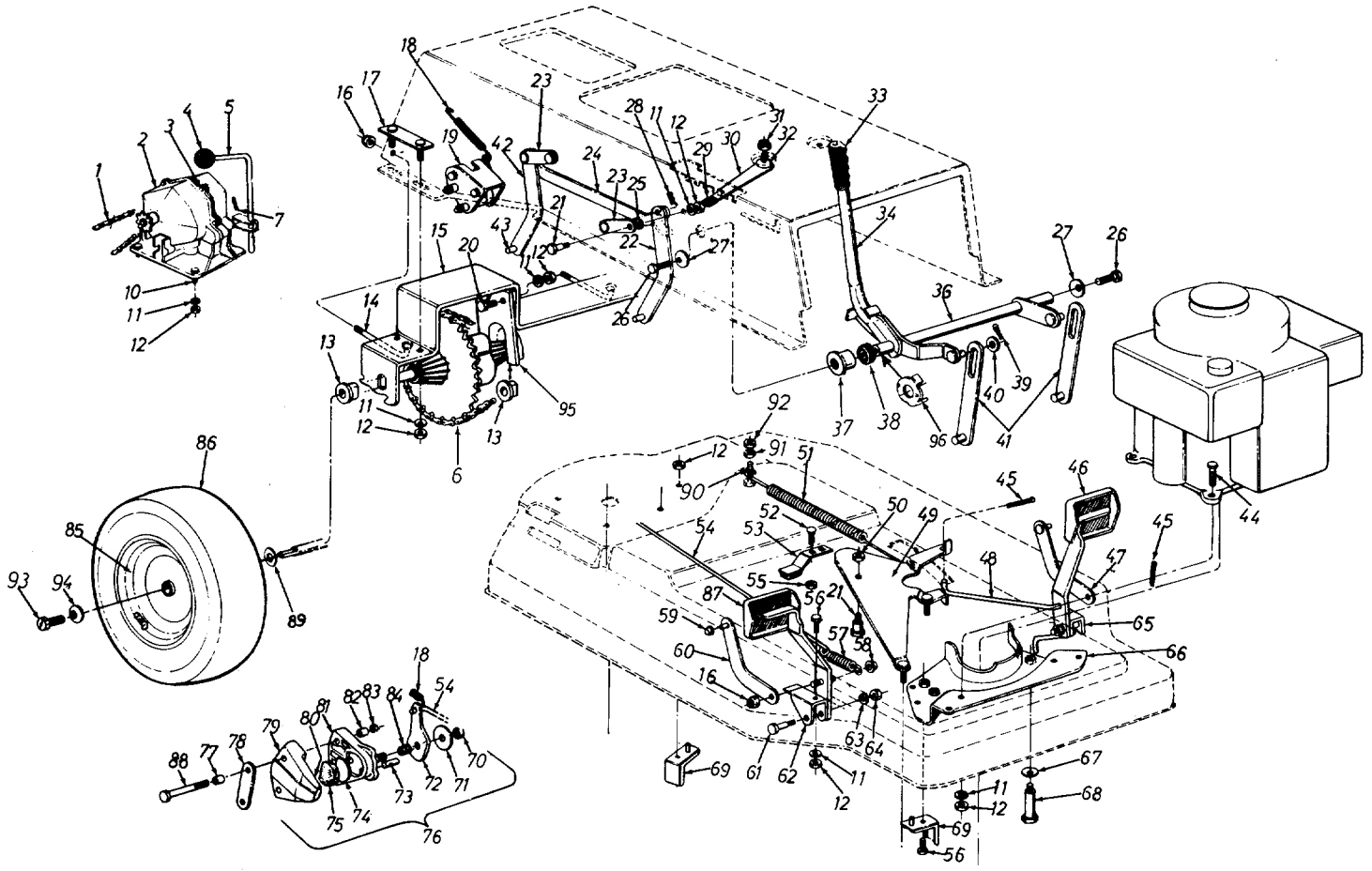


18  
10.25 x 3.25 / 734-0510

**PARTS LIST FOR MODELS 137-380A AND 137-385A**

REF. NO.	PART NO.	COLOR CODE	DESCRIPTION	NEW PART	REF. NO.	PART NO.	COLOR CODE	DESCRIPTION	NEW PART
1	757-0264		Seat Assembly		61	710-0325		Hex Scr. 3/8-24 x .50" Lg. *	
2	731-0220		Cap for Steering Wheel		62	736-0105		Belleville Wash.	
3	731-0219		12" Dia. Steering Wheel		63	741-0199		Plastic Flanged Brg.	
4	736-0156		Fl-Wash. .635 I.D. x 1.120		64	12749		Steering Arm Shaft Ass'y.	
5	736-0174		Wave Wash. .66 I.D. x .88		65	710-0670		Hex Scr. Nylon 3/8-16 x 1.25"	
6	748-0227		Hex Flange Brg. .630 I.D.		66	11055		Transmission Belt Guard	
7	12740		Dash Panel Ass'y.—Recoil (380A)		67	12757	-462	Lower Frame	
	12742		Dash Panel Ass'y.—Elect. (385A)		68	710-0325		Hex Scr. 3/8-24 x .50" Lg. *	
8	12747		Battery Brkt. (385A)		69	736-0105		Belleville Wash.	
9	710-0198		Hex Sems Scr. 5/16-18 x .75		70	741-0199		Plastic Flanged Brg.	
10	710-0255		Truss Mach. Scr. 1/4-20 x .75"		71	12800		Transmission Support Brkt.	
11	11836	-462	Hood		72	732-0256		Seat Spring 3.25 High	
12	731-0341		Grille		73	736-0921		L-Wash. 1/2" Scr. *	
13	12751		Grille Frame		74	712-0206		Hex Nut 1/2-13 Thd. *	
14	712-0287		Hex Nut 1/4-20 Thd. *		75	736-0119		L-Wash. 5/16" Scr. *	
15	736-0329		L-Wash. 1/4" Scr. *		76	712-0267		Hex Nut 5/16-18 Thd. *	
16	712-0375		Hex Cent. L-Nut 3/8-16 Thd.		77	09963	-462	Hitch Bracket	
17	736-0105		Belleville Wash.		78	710-0255		Truss Mach. Scr. 1/4-20 x .75"	
18	736-0105		Belleville Wash.		79	11002	-462	Rear Fender	
19	723-0305		Foot Mat—L.H.		80	710-0195		Hex Scr. 1/4-28 x .62" Lg. *	
20	736-0119		L-Wash. 5/16" Scr. *		81	736-0329		L-Wash. 1/4" Scr. *	
21	712-0267		Hex Nut 5/16-18 Thd. *		82	710-0322		Hex Sems Scr. 5/16-18 x 1.00"	
22	12802	-462	Upper Frame		83	12804		Transmission Panel	
23	738-0307		Steering Shaft		84	11002	-462	Rear Fender	
24	12746	-462	Front Pivot Bracket		85	725-0201		Ignition Key Only	
25	736-0158		L-Wash. 5/8" Scr. *			725-0464		Ignition Switch (Not Shown) (380A)	N
26	710-0312		Hex Scr. 5/8-18 x 1.31 Spec.			725-0267		Ignition Switch (Not Shown) (385A)	
27	712-0923		Hex Cent. Jam Nut 5/8-18		86	11263		Plastic Handle	
28	711-0169		Collar for a 5/8" Dia.		87	731-0144		Vinyl Strip	
29	748-0227		Hex Flange Brg. .630 I.D.		88	736-0242		Belleville Wash. .345 I.D.	
30	12415	-462	Pivot Bar Ass'y.		89	712-0158		Hex Cent. L-Nut 5/16-18 Thd.	
31	714-0115		Cotter Pin 1/8" Dia. x 1.00"		90	712-0138		Hex Nut 1/4-28 Thd. *	
32	12752	-462	Axle Ass'y.—Front—L.H.		91	723-0156		Ball Joint Ass'y. 3/8-24 Thd.	
33	711-0198		Ferrule		92	712-0116		Hex Ins. L-Nut 3/8-24 Thd.	
34	747-0144		Tie Rod		93	710-0216		Hex Scr. 3/8-16 x .75" Lg. *	
35	736-0156		Fl-Wash. .635 I.D. x 1.120		94	736-0119		L-Wash. 3/8" Scr. *	
36	734-0510		Front Wheel Ass'y.—Comp. 10.25 x 3.25		95	712-0798		Hex Nut 3/8-16 Thd. *	
37	711-0169		Collar 5/8" I.D.		96	731-0309		Nylon Bushing	
38	710-0494		Sq. Hd. Set Scr. 5/16-18 x .38"		97	12653		Bushing Cap	
39	12755	-462	Axle Ass'y.—Front—R.H.		98	710-0351		Truss Mach. B-Tap. Scr. #10 x .50" Lg.	
40	712-0711		Hex Jam Nut 3/8-24 Thd.		99	712-0344		Speed Nut #10	
41	711-0625		Steering Rod		100	746-0273		Throttle Control Ass'y.	
42	712-0267		Hex Nut 5/16-18 Thd. *		101	710-0351		Truss Mach. B-Tap. Scr. #10 x .50" Lg.	
43	736-0119		L-Wash. 5/16" Scr. *		102	710-0289		Hex Scr. 1/4-20 x .50" Lg. *	
44	710-0216		Hex Scr. 3/8-16 x .75" Lg. *		103	723-0269		Hood Lock Ass'y.	
45	736-0105		Belleville Wash.		104	736-0329		L-Wash. 1/4" Scr. *	
46	710-0198		Hex Sems Scr. 5/16-18 x .75"		105	712-0287		Hex Nut 1/4-20 Thd. *	
47	710-0198		Hex Sems Scr. 5/16-18 x .75"		106	710-0451		Carr. Bolt 5/16-18 x .75	
48	723-0304		Foot Mat—R.H.		107	710-0599		Hex Wash. SF-Tapp Scr. 1/4-20 x .50	
49	736-0329		L-Wash. 1/4" Scr. *		108	710-0351		Truss Mach. B-Tapp. Scr. #10 x .50" Lg. * (380A)	
50	712-0287		Hex Nut 1/4-20 Thd. *		109	710-0425		Truss Mach. Scr. #10-24 x .62" Lg. * (380A)	
51	712-0375		Hex Cent. L-Nut 3/8-16 Thd.		110	736-0338		Fiber Wash. (380A)	
52	12850		Steering Gear Support Ass'y.		111	712-0121		Hex Nut #10-24 Thd. (380A)	
53	748-0228		Hex Flange Brg. .505 I.D.		112	11053		Switch Brkt. Ass'y. (380A)	
54	748-0237		Pinion Gear		113	712-0334		Speed Nut #10Z (380A)	
55	736-0242		Belleville Wash.		114	725-0464		Ignition Switch (380A)	
56	712-0237		Hex Cent. L-Nut 5/16-24 Thd.		115	736-0225		Int. L-Wash. 5/8" I.D. (380A)	
57	710-0180		Hex Scr. 3/8-24 x .75" Lg. *						
58	736-0105		Belleville Wash.						
59	748-0236		Bevel Gear						
60	741-0199		Plastic Flanged Brg.						

# 137-380A 137-385A



**NOTE:** If for any reason, disc brake is disassembled, be sure round end of push pins (Ref. No. 73) is toward the cam lever (Ref. No. 72).

**PARTS LIST FOR MODELS 137-380A AND 137-385A**

REF. NO.	PART NO.	COLOR CODE	DESCRIPTION	NEW PART	REF. NO.	PART NO.	COLOR CODE	DESCRIPTION	NEW PART
1	713-0161		#41 Chain 1/2" x 73 Links		52	710-0134		Carriage Bolt 1/4-20 x .62"*	
	713-0723		#41 Master Link 1/2" Pitch		53	761-0148		Blade Brkt. Ass'y.	
2	717-0222		Single Spd. Trans. Ass'y.—		54	747-0107		Brk. Rod .25 Dia. x 24.12" Lg.	
3	710-0412		Hex Hd. Cap Scr. 1/4-28 x .75"*		55	712-0287		Hex Nut 1/4-20 Thd.*	
4	720-0165		Ball Knob		56	710-0259		Hex Sems Scr. 5/16-18 x .62"*	
5	11080		Trans. Shift Lever Ass'y.		57	732-0245		Brake Spring	
6	713-0161		#41 Chain 1/2 Pitch x 73 Links		58	726-0100		Push Nut Dia. Rod	
7	714-0474		Cotter Pin 1/8" Dia. x .75"*		59	726-0121		Push Cap .25 Dia.	
10	710-0322		Hex Sems Cap Scr. 5/16-18 x 1"*		60	11056		Parking Brake—Lever Ass'y. R.H.	
11	736-0119		L-Wash. 5/16" Scr.*		61	738-0213		Shld. Bolt .498 Dia. x 1.45	
12	712-0267		Hex Nut 5/16-18 Thd.*		62	11039		Pedal "U" Brkt. Ass'y.	
13	741-0199		Fl-Brg. with Flats .753" I.D.		63	736-0169		L-Wash. 3/8" Scr.*	
14	710-0437		Chain Adj. Link 5/16-18 Thd.		64	712-0798		Hex Nut 3/8-16 Thd.*	
15	11009		Rear Axle Brkt.		65	11755		Pedal U Brkt. L.H. Ass'y	
16	712-0429		Hex Ins. L-Nut 5/16-18 Thd.		66	12654		Engine Belt Guard Ass'y.	
17	10360		Axle Bolt Plate Ass'y.		67	736-0105		Belleville Wash.	
18	732-0157		Spring .380 O.D. x 3.25 (Brake Return)		68	738-0215		Shld. Scr. 3.00"	
19	11011		Disc Brake Brkt. Ass'y.		69	12160		Belt Keeper Ass'y.	
20	710-0198		Hex Sems Scr. 5/16-18 x .75"*		70	712-0134		Hex Top L-Nut 5/16-24 Thd.	
21	738-0140		Shld. Scr. .431 Dia. x .18" Lg.		71	HH-03-03032		Wash. .349" I.D. x 1.004 O.D.	
22	11023		Deck Link Ass'y. (3 Req'd.)		72	HH-18-03493		Cam Lever	
23	09721		Pivot Link Ass'y.		73	HH-05-03034		Push Pin .309 Dia. .857" Lg.	
24	11014		Connecting Lift Brkt.		74	HH-0303303		Backup Wash. 1.115" Dia. x .018 Thk. (D-Shaped)	
25	736-0159		Fl-Wash. .344 I.D. x .875 O.D.		75	HH-15-02124		Friction Pad 1.110" Dia. x .472 Thk. (Cam Side D-Shaped)	
26	710-0201		Hex Hd. Cap Scr. 3/8-16 x .62"*		76	761-0130		Disc Brake Ass'y.—Comp.	
27	736-0219		Belleville Wash. .400 I.D. x 1.13 O.D.		77	761-0133		Spacer for Disc Brake	
28	714-0101		Int. Cotter Pin 1/2" Dia.		78	11010		Blade Plate	
29	11249		Ht. Adj. Knob		79	HH-12-03293		Casting Carrier Side	
30	11027		Handle Stop Brkt. Ass'y.		80	HH-15-03149		Friction Pad 1.110" Dia. x .245 Thk. (Carrier Side D-Shaped)	
31	712-0429		Hex Ins. L-Nut 5/16-18 Thd.		81	HH-12-03292		Casting Cam Side	
32	735-0126		Rubber Wash. .33 I.D. x .87		82	761-0133		Spacer for Disc Brk.	
33	720-0157		Grip Finger—Black		83	712-0158		Hex Cent. L-Nut 5/16-18 Thd.	
34	749-0212		Lift Handle—R.H.		84	HH-06-03031		Sprg.—Compres. .350" Dia.	
36	12397		Lift Handle Brkt. Ass'y.		85	734-0517		Rear Wheel Rim Ass'y.	
37	748-0201		Spacer 5/8 I.D. x 7/8 O.D. x .57			734-0298		Rear Wheel Tire Only 13.0 x 5.0	
38	735-0180		Rubber Wash.		86	734-0523		Rear Wheel Ass'y.—Comp.	
39	714-0115		Cotter Pin 1/8" Dia. x 1.00"*		87	11036		Brake Pedal Ass'y.	
40	736-0192		Fl-Wash. .531 I.D. x .93 O.D.			12378		Pedal Pan—Vinyl	
41	11025		Lockout Link Ass'y.		88	710-0176		Hex Hd. Cap Scr. 5/16-18 x 2.75" Lg.	
42	11024		Deck Link		89	736-0134		Fl-Wash.	
43	711-0332		Left Brkt. Pin		90	710-0606		Hex Scr. 1/4-20 x 1.50" Lg.*	
44	710-0442		Hex Hd. Cap Scr. 5/16-18 x 1.50" Lg.*		91	712-0107		Hex Cent. L-Nut 1/4-20 Thd.	
45	714-0115		Cotter Pin 1/8" Dia. x 1.00"*		92	712-0287		Hex Nut 1/4-20 Thd.*	
46	11037		Clutch Pedal Ass'y.		93	710-0627		Screw w/Lock 5/16-24 x .75"	
	12379		Pedal Pad—Vinyl		94	736-0242		Belleville Wash.	
47	11057		Parking Brake—Lever Ass'y. L.H.		95	10364		Rear Axle Plate	
48	11061		Clutch Rod		96	11029		Handle Pivot Brkt.	
49	12446	—462	Idler Brkt. Ass'y.						
50	712-0116		Hex Ins. L-Nut 3/8-24 Thd.						
51	732-0191		Sprg. (Idler) .75 O.D. x 11.0"						

\*For faster service obtain standard nuts, bolts and washers locally. If these items cannot be obtained locally, order by part number and size as shown on parts list.

(463—Top Flite Red)

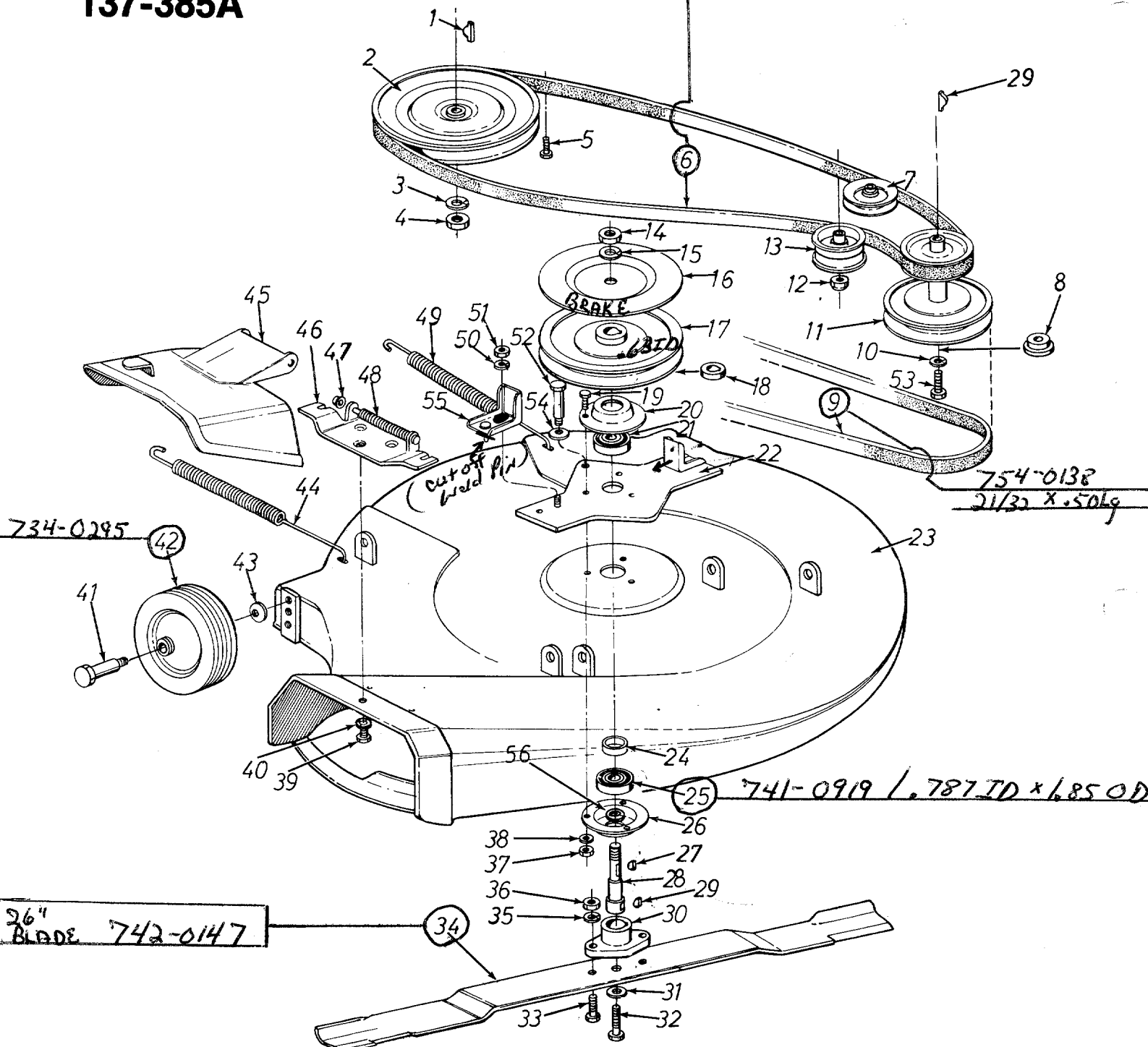
When ordering parts, if color or finish is important use the appropriate color code shown above (e.g. Top Flite Red—11904 (463) )

NOTE: The engine is not under warranty by the mower manufacturer . . . If repairs or service is needed on the engine, please contact your nearest authorized engine service outlet. Check the "Yellow Pages" of your telephone book under "Engines—Gasoline."



**137-380A**  
**137-385A**

DRIVE BELT  
 754-0198 1/2 x 62



**▶ IMPORTANT**  
 Belts listed by Part Number are of special construction and should be used when replacement is necessary. The dimensions and description given are for general reference only and belts purchased by description and dimension generally will only provide temporary service.

**PARTS LIST FOR MODELS 137-380A AND 137-385A**

Ref. No.	Part No.	Color Code	Description	New Part	Ref. No.	Part No.	Color Code	Description	New Part
1	714-0129		#4 Hi-Pro Key 3/32 x 5/8" Dia.		28	711-0405		Spindle	
2	756-0174		Trans. Split Pulley .50 I.D.		29	714-0365		#6 Hi-Pro Key 5/32 x 5/8" Dia.	
3	736-0921		L-Wash. 1/2" Scr.*		30	10769		Blade Adapter Kit	
4	712-0922		Hex Jam Nut 1/2-20 Thd.		31	736-0217		L-Wash. 3/8" Scr. H.D.	
5	710-0259		Hex Sems Scr. 5/16-18 x .62" Lg.*		32	710-0459		Hex Hd. Cap Scr. 3/8-24 x 1.50" Lg. H.T.	
6	754-0198		"V" Belt 1/2 x 62" Lg. (Drive Belt)		33	710-0117		Hex Hd. Cap Scr. 5/16-24 x 1.00" Lg. H.T.	
7	756-0116		"V" Idler 3.06 O.D.		34	742-0147		26 Inch Blade	
8	711-0572		Step Wash. for Engine Pulley		35	736-0119		L-Wash. 5/16" Scr.	
9	754-0138		"V" Belt 21/32 x .50" Lg. (Blade Belt)		36	712-0123		Hex Nut 5/16-24 Thd.*	
10	736-0217		L-Wash. 3/8" Scr. H.D.		37	712-0267		Hex Nut 5/16-18 Thd.*	
11	756-0246		Two-Step Engine Pulley		38	736-0119		L-Wash. 5/16" Scr.	
12	712-0116		Hex Ins. L-Nut 3/8-24 Thd.		39	710-0195		Hex Hd. Cap Scr. 1/4-28 x .62" Lg. (3 Req'd.)	
13	756-0217		Flat Idler 2.75 O.D. w/Flanges		40	736-0329		L-Wash 1/4" Scr.*	
14	712-0261		Hex Jam Nut 5/8-11 Thd.		41	738-0119		Axle Bolt .625 Dia. 1.75	
15	736-0158		Sprg. L-Wash. 5/8" Scr.*		42	734-0295		Wheel Ass'y. Comp. 5.0" Dia.	
16	11073		Blade Brake Disc		43	736-0105		Belleville Wash.	
17	756-0143		Deck Split Pulley .63 I.D.		44	732-0153		Deck Spring	
18	748-0168		Spacer		45	11571		Chute Cover Ass'y.	
19	710-0322		Hex Sems Cap Scr. 5/16-18 x 1.00 Lg.* (3 Req'd.)		46	11399		Adapter Plate Ass'y.	
20	741-0163		Housing—Brg. Ass'y.		47	726-0106		Push Nut 1/4" Rod	
21	741-0919		Ball Brg. .787 I.D. x 1.85 O.D.		48	732-0261		Torsion Spring	
22	11541		Belt Guard Ass'y.		49	732-0153		Deck Spring	
23	11083		25 Inch Deck Ass'y.		50	736-0119		L-Wash. 5/16" Scr.*	
24	750-0142		Spacer .836 I.D. x 1.01 O.D. x .320 Thk.		51	712-0267		Hex Nut 5/16-18 Thd.*	
25	741-0919		Ball Brg. .787 I.D. x 1.85 O.D.		52	738-0129		Shld. Scr. .498" Dia. x 2.00	
26	741-0163		Housing—Brg. Ass'y. w/Brg.		53	710-0151		Hex Hd. Cap Scr. 3/8-24 x 2.00" Lg.	
	08253		Brg. Housing (only)		54	736-0242		Belleville Wash.	
27	714-0388		#61 Hi-Pro Key 3/16 x 5/8" Dia.		55	10426		Belt Keeper Ass'y.	
					56	736-0287		Fl-Wash. .749 I.D. x 1.24 O.D. x .060	
						11910		26.0" Deck Ass'y. Comp.	

\*For faster service obtain standard nuts, bolts and washers locally. If these items cannot be obtained locally, order by part number and size as shown on parts list.

(462—Red Flake)

When ordering parts if color or finish is important, use color code shown at left. (e.g. Red Flake Finish—11001 (462).)

The engine is not under warranty by the mower manufacturer. If repairs or service is needed on the engine, please contact your nearest authorized engine service outlet. Check the "Yellow Pages" of your telephone book under "Engines — Gasoline."



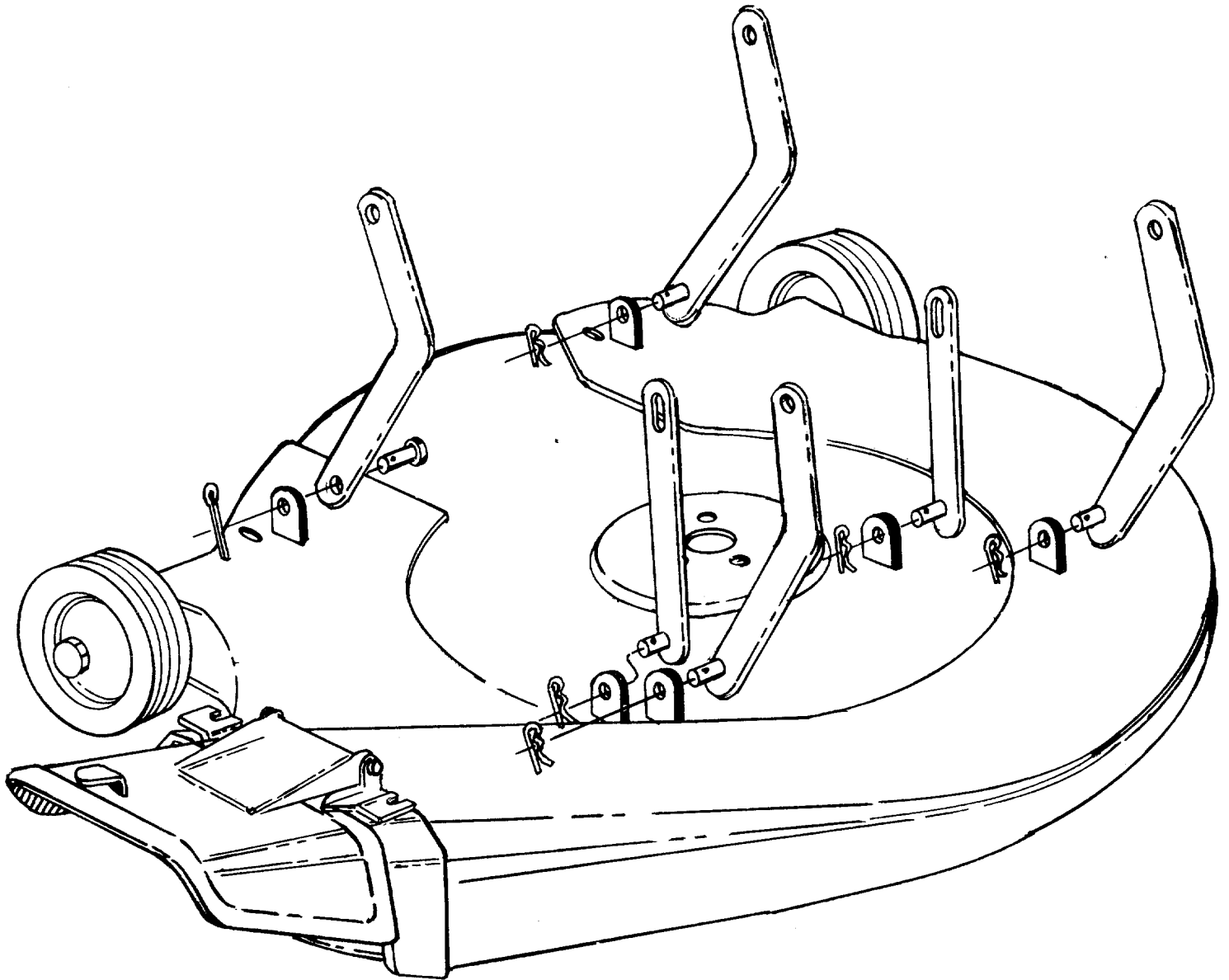
**WHEEL CHART**

FRONT WHEEL		REAR WHEEL	
PART NO.	DESCRIPTION	PART NO.	DESCRIPTION
734-0510 748-0146	Wheel Ass'y. Comp. 10.25 x 3.25 Flange Bearing w/Flats .630" I.D.	734-0523 734-0517 734-0298 734-0255 734-0249	Wheel Ass'y. Comp. 13.00 x 5.00-6 Rim Ass'y. with Hub Tire Only Tubeless 13.00 x 5.00-6 Air Valve Inner Tube (Service Only)

# DECK LINKAGE



Refer to illustration below for proper deck link hook-up. If the deck is removed for any reason use the illustration below for correct assembly.





# PARTS INFORMATION

## POWER EQUIPMENT PARTS AND SERVICE

Parts and service for all MTD manufactured power equipment are available through the authorized service firms listed below. All orders should specify the model number of your unit, parts numbers, description of parts and the quantity of each part required.

<b>ALABAMA</b>	<b>BIRMINGHAM</b>	
	Auto Electric & Carburetor Co. ....	2625 4th Ave. S. .... 35233
<b>ARKANSAS</b>	<b>NORTH LITTLE ROCK</b>	
	Sutton's Lawn Mower Shop .....	Rt. 4, Box 368 ..... 72117
	<b>FORT SMITH</b>	
	Mity Mite Motors, Inc. ....	2515 Towson Ave. .... 72901
<b>CALIFORNIA</b>	<b>SAN BERNARDINO</b>	
	Lawn Mower Supply Co. ....	25608 E. Baseline .... 92410
	<b>SAN FRANCISCO</b>	
	J.W. Jewett Co. ....	981 Folsom St. .... 94107
	<b>SACRAMENTO</b>	
	Luttig & Severson .....	2030 28th St. .... 95818
<b>COLORADO</b>	<b>DENVER</b>	
	South Denver Lawn Equip. ....	527 West Evans ..... 80223
<b>CONNECTICUT</b>	<b>SUFFIELD</b>	
	The Jones & Ramsey Co. ....	850 Thompsonville Rd. 06078
<b>FLORIDA</b>	<b>JACKSONVILLE</b>	
	Radco Distributors .....	2403 Market St. .... 32206
	<b>CORAL GABLES</b>	
	Moz-All of Florida, Inc. ....	365 Greco Ave. .... 33146
<b>GEORGIA</b>	<b>EAST POINT</b>	
	East Point Cycle & Key .....	2834 Church St. .... 30344
<b>ILLINOIS</b>	<b>LYONS</b>	
	Keen Edge Co. ....	8615 Ogden Ave. .... 60534
<b>INDIANA</b>	<b>ELKHART</b>	
	Parts & Sales Inc. ....	2101 Industrial Pkwy. ..46514
<b>IOWA</b>	<b>DUBUQUE</b>	
	Power Lawn & Garden Equip. .	2551 J.F. Kennedy .... 52001
<b>KANSAS</b>	<b>WICHITA</b>	
	Hixon, Inc. ....	3030 Mascot ..... 67204
<b>LOUISIANA</b>	<b>NEW ORLEANS</b>	
	Suhren Engine Co. ....	8330 Earhart Blvd. .... 70118
<b>MARYLAND</b>	<b>TAKOMA PARK</b>	
	Center Supply Co. ....	6867 New Hampshire Ave. 20012
<b>MASSACHUSETTS</b>	<b>SPRINGFIELD</b>	
	Morton B. Collins Co. ....	300 Birnie Ave. .... 01107
<b>MICHIGAN</b>	<b>MOUNT CLEMENS</b>	
	Power Equipment Dist. ....	36463 South Gratiot... 48043
	<b>LANSING</b>	
	Lorenz Service Co. ....	2500 S. Pennsylvania.. 48900
<b>MINNESOTA</b>	<b>MINNETONKA</b>	
	Hance Distributing Inc. ....	11212 Wayzata Blvd. ..55343
<b>MISSISSIPPI</b>	<b>BILOXI</b>	
	Biloxi Sales & Service, Inc. ....	506 Caillaver St. .... 39533
<b>MISSOURI</b>	<b>KANSAS CITY</b>	
	Automotive Equip. Service ....	3117 Holmes St. .... 64109
	<b>ST. LOUIS</b>	
	Henzler, Inc. ....	2015 Lemay Ferry Rd. 63125
<b>NEW YORK</b>	<b>CARTHAGE</b>	
	Gamble Dist., Inc. ....	West End Ave. .... 13619
	<b>SYRACUSE</b>	
	Kimber's, Inc. ....	115 N. Geddes St. .... 13204

## BRIGGS & STRATTON, TECUMSEH AND PEERLESS PARTS AND SERVICE

Briggs & Stratton, Tecumseh and Peerless parts and service should be handled by your nearest authorized engine service firm. Check the yellow pages of your telephone directory under the listing *Engines Gasoline*, Briggs & Stratton or Tecumseh Lauson

<b>NORTH CAROLINA</b>	<b>GREENSBORO</b>	
	Dixie Sales Company .....	327 Battleground Ave.. 27402
	<b>GOLDSBORO</b>	
	Smith Hardware Co. ....	515 N. George St. .... 27530
<b>OHIO</b>	<b>WADSWORTH</b>	
	National Central .....	687 Seville Rd. .... 44281
	<b>CLEVELAND</b>	
	Bleckrie, Inc. ....	7900 Lorain Ave. .... 44102
	<b>CARROL</b>	
	Stebe's Mid-State Mower Supply Box 366 .....	43112
	<b>WILLARD</b>	
	Sunshine Wholesale Tire Outlet Route 224 .....	44890
	<b>MANSFIELD</b>	
	McClure Lawn & Garden Supply...1114 Lexington Ave. .	44903
<b>OKLAHOMA</b>	<b>MUSKOGEE</b>	
	Victory Motors, Inc. ....	605 S. Cherokee ..... 74401
	<b>ADA</b>	
	Ada Auto Supply .....	301 E. 12th St. .... 74820
<b>OREGON</b>	<b>PORTLAND</b>	
	Kenton Supply Co. ....	8216 N. Denver Ave. . 97217
<b>PENNSYLVANIA</b>	<b>LANCASTER</b>	
	Raub Supply Co. ....	James & Mulberry Sts...17604
	<b>PITTSBURGH</b>	
	Bluemont Co. ....	11125 Frankstown Rd.. 15235
<b>TENNESSEE</b>	<b>KNOXVILLE</b>	
	Master Repair Service .....	2423 Broadway, N.E. ..37917
	<b>MEMPHIS</b>	
	Memphis Cycle & Supply Co. ....	421 Monroe Ave. .... 38103
	American Sales & Service, Inc. .	1922 Lynnbrook ..... 38116
<b>TEXAS</b>	<b>DALLAS</b>	
	Marr Brothers, Inc. ....	423 E. Jefferson ..... 75203
	<b>HOUSTON</b>	
	Bullard Supply Co. ....	2409 Commerce St. .... 77003
	<b>SAN ANTONIO</b>	
	Catto & Putty, Inc. ....	P.O. Box 2408 .....78206
	<b>FORT WORTH</b>	
	Woodson Sales Corp. ....	1702 N. Sylvania ..... 76111
<b>UTAH</b>	<b>SALT LAKE CITY</b>	
	A-1 Engine & Mower Co. ....	437 E. 9th St. ....84111
<b>VERMONT</b>	<b>BURLINGTON</b>	
	Vermont Appliance Co. ....	44 Lakeside Ave. ....05401
<b>VIRGINIA</b>	<b>RICHMOND</b>	
	RBI Corp. ....	963 Myers St. .... 23260
<b>WASHINGTON</b>	<b>SEATTLE</b>	
	Bailey's Rebuild, Inc. ....	1325 E. Madison St. ...98102
<b>WEST VIRGINIA</b>	<b>CHARLESTON</b>	
	Young's, Inc. ....	233 Virginia St., E. ... 25301
<b>WISCONSIN</b>	<b>APPLETON</b>	
	Automotive Supply Co. ....	123 S. Linwood Ave. ..54911

## WARRANTY PARTS AND SERVICE POLICY

The purpose of warranty is to protect the customer from defects in workmanship and materials, defects which are NOT detected at the time of manufacture. It does not provide for the unlimited and unrestricted replacement of parts. Use and maintenance are the responsibility of the customer. The manufacturer cannot assume responsibility for conditions over which it has no control. Simply put, if it's the manufacturer's fault, it's the manufacturer's responsibility; if it's the customer's fault, it's the customer's responsibility.

### CLAIMS AGAINST THE MANUFACTURER'S WARRANTY INCLUDES

1. Replacement of Missing Parts on new equipment.
2. Replacement of Defective Parts within the warranty period.
3. Repair of Defects within the warranty period.

All claims MUST be substantiated with the following information:

1. Model Number of unit involved.
2. Date unit was purchased or first put into service.
3. Date of failure.
4. Nature of failure.