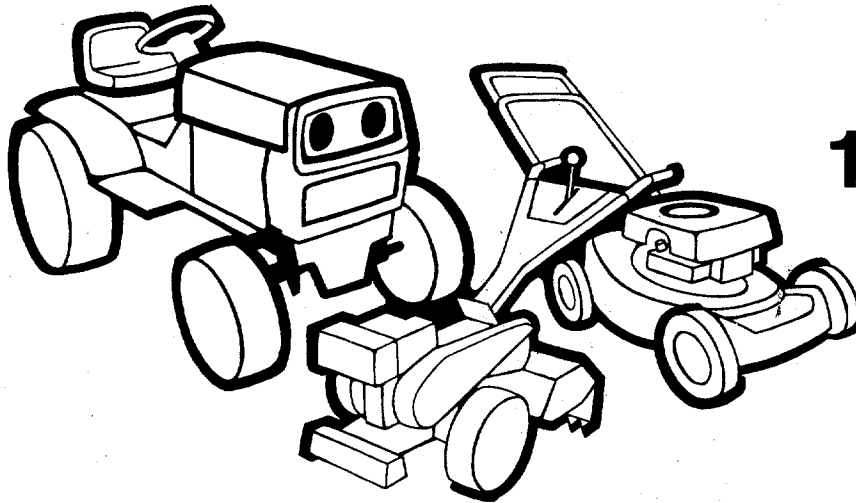


# OWNERS MANUAL



**11 and 16 H.P.  
LAWN  
TRACTORS**

**ASSEMBLY  
OPERATION  
MAINTENANCE  
PARTS LIST**

## **Model Numbers**

134-720-000	134-721-000
134-722-000	134-723-000
134-724-000	134-725-000
134-726-000	134-727-000
134-730-000	134-731-000
134-732-000	134-733-000
134-734-000	134-735-000
134-736-000	134-737-000

**Important:**  
**Read Safety Rules and  
Instructions Carefully**

Thank you for purchasing an  
American built product.

# INDEX

Safe Operating Practices .....	3	Off-Season Storage .....	16
Assembly .....	5	Trouble Shooting Chart .....	17, 18
Controls .....	8	Illustrated Parts for Tractor .....	20-31
Operation .....	10	Illustrated Parts for Transaxle .....	32, 33
Adjustments .....	10	Electrical Diagrams and Parts Lists .....	34, 35
Lubrication .....	11	Parts Ordering Information .....	Back Cover
Maintenance .....	12		

## LIMITED WARRANTY

For one year from the date of original retail purchase, MTD PRODUCTS INC will either repair or replace, at its option, free of charge, F.O.B. factory or authorized service firm, any part or parts found to be defective in material or workmanship. Transportation charges for the movement of any power equipment unit or attachment are the responsibility of the purchaser. Transportation charges for any parts submitted for replacement under this warranty must be paid by the purchaser unless such return is requested by MTD PRODUCTS INC.

This warranty will not apply to any part which has become inoperative due to misuse, excessive use, accident, neglect, improper maintenance, alterations, or unless the unit has been operated and maintained in accordance with the instructions furnished. This warranty does not apply to the engine, motor, battery, battery charger or component parts thereof. Please refer to the applicable manufacturer's warranty on these items.

This warranty will not apply where the unit has been used commercially.

Warranty service is available through your local authorized service dealer or distributor. If you do not know the dealer or distributor in your area, please write to the Customer Service Department of MTD.

The return of a complete unit will not be accepted by the factory unless prior written permission has been extended by MTD.

This warranty gives you specific legal rights. You may also have other rights which vary from state to state.



This unit is equipped with an internal combustion engine and should not be used on or near any unimproved forest-covered, brush-covered or grass-covered land unless the engine's exhaust system is equipped with a spark arrester meeting applicable local or state laws (if any). If a spark arrester is used, it should be maintained in effective working order by the operator.

In the State of California the above is required by law (Section 4442 of the California Public Resources Code). Other states may have similar laws. Federal laws apply on federal lands. A spark arrester muffler is available at your nearest engine authorized service center.



## WARNING

To reduce the potential for any injury, comply with the following safety instructions. Failure to comply with the instructions may result in personal injury.

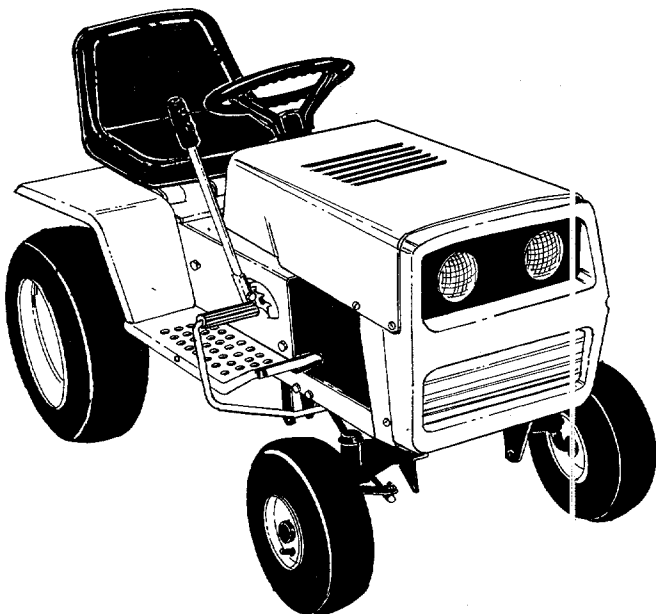
# SAFE OPERATION PRACTICES FOR RIDING VEHICLES

1. Read this owner's manual carefully in its entirety before attempting to assemble or operate this unit. Keep this manual in a safe place for future and regular reference and for ordering replacement parts.
2. This unit is a precision piece of power equipment, not a plaything. Therefore exercise extreme caution at all times.
3. Know the controls and how to stop quickly—**READ THIS OWNER'S MANUAL.**
4. Do not allow children to operate vehicle. Do not allow adults to operate it without proper instruction. Only persons well acquainted with these rules of safe operation should be allowed to use your mower.
5. No one should operate this unit while intoxicated or while taking medication that impairs the senses or reactions.
6. Wear sturdy, rough-soled work shoes and close-fitting slacks and shirts to avoid entanglement in the moving parts. Never operate a unit in bare feet, sandals, or sneakers.
7. To prevent injury, do not carry passengers or give rides. Keep children, pets and bystanders out of the area while mowing. Only the operator should ride on the unit and only ride in the seat.
8. Check overhead clearance carefully before driving under power lines, guy wires, bridges or low hanging tree branches, before entering or leaving buildings, or in any other situation where the operator may be struck or pulled from the unit, which could result in serious injury.
9. To maintain control of the unit and reduce the possibility of upset or collision, operate the tractor smoothly. Avoid erratic operation and excessive speed.
10. Keep the area of operation clear of all persons, particularly small children and pets. Stop engine when they are in the vicinity of your mower. Although the area of operation should be completely cleared of foreign objects, a small object may have been overlooked and could be accidentally thrown by the mower in any direction and cause injury.
11. Clear work area of objects which might be picked up and thrown by the mower in any direction and cause injury.
12. Stop the blade(s) when crossing gravel drives, walks or roads.
13. Disengage all attachment clutches and shift into neutral before attempting to start engine.
14. Disengage power to attachment(s) and stop engine before leaving operating position.
15. Do not put hands or feet near or under rotating parts. Keep clear of the discharge opening at all times as the rotating blade(s) can cause injury.
16. Disengage power to attachment(s) and stop engine before making any repairs or adjustments. Disconnect the spark plug wire and keep the wire away from the plug to prevent accidental starting.
17. Before attempting to unclog the mower or discharge chute, stop the engine. The mower blade(s) may continue to rotate for a few seconds after the engine is shut off. Therefore, be sure the blade(s) have stopped completely. Disconnect the spark plug wire and keep the wire away from the plug to prevent accidental starting.
18. Disengage power to attachment(s) when transporting or not in use.
19. Take all possible precautions when leaving vehicle unattended such as disengaging power-take-off, lowering attachments, shifting into neutral, setting parking brake, stopping engine and removing key.
20. Do not stop or start suddenly when going uphill or downhill. Mow up and down face of steep slopes; never across the face. Use extreme caution if it is necessary to drive the tractor up an incline or back the tractor down an incline because the front of the tractor could lift and rapidly flip over backward which could cause serious injury.
21. Reduce speed on slopes and in sharp turns to prevent tipping or loss of control. Always keep the tractor in gear when going down steep hills to take advantage of engine braking action.
22. Stay alert for holes in terrain and other hidden hazards.
23. Use care when pulling loads or using heavy equipment.
  - A. Use only approved drawbar hitch points.
  - B. Limit loads to those you can safely control.
  - C. Do not turn sharply. Use care when backing.
  - D. Use counterweight(s) or wheel weights when suggested in owner's manual.
24. Watch out for traffic when crossing or near roadways.
25. When using any attachments, never direct discharge of material toward bystanders nor allow anyone near vehicle while in operation.
26. Handle gasoline with care. It is highly flammable.
  - A. Use approved gasoline container.
  - B. Never remove cap or add gasoline to a running or hot engine or fill fuel tank indoors. Wipe up spilled gasoline.
  - C. Open doors if engine is run in garage. Exhaust fumes are dangerous. Do not run engine indoors.

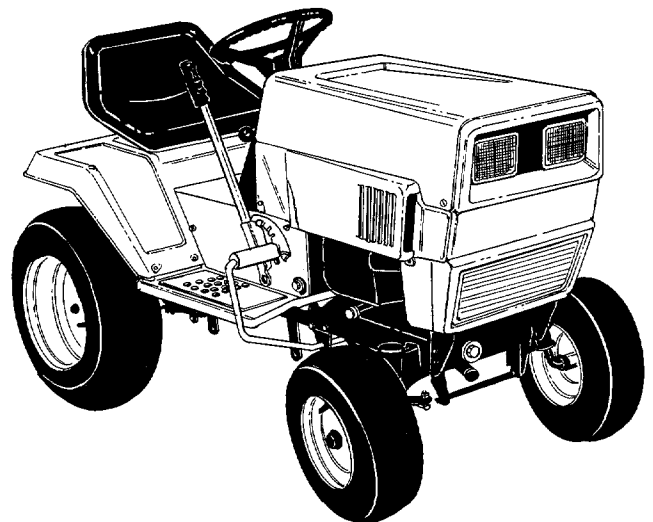
27. Keep the vehicle and attachments in good operating condition, and keep safety devices in place. Use guards as instructed in operator's manual.
28. Keep all nuts, bolts, and screws tight to be sure the equipment is in safe working condition.
29. Never store the equipment with gasoline in the tank inside a building where fumes may reach an open flame or spark. Allow engine to cool before storing in any enclosure.
30. To reduce fire hazard, keep engine free of grass, leaves or excessive grease.
31. The vehicle and attachments should be stopped and inspected for damage after striking a foreign object. The damage should be repaired before restarting and operating the equipment.
32. Do not change the engine governor settings or overspeed the engine.
33. When using the vehicle with mower, proceed as follows:
  - (1) Mow only in daylight or in good artificial light.
  - (2) Never make a cutting height adjustment while engine is running if operator must dismount to do so.
  - (3) Shut the engine off and wait until the blade comes to a complete stop before removing the grass catcher.
  - (4) Check blade mounting bolts for proper tightness at frequent intervals.
34. Check grass catcher bags frequently for wear or deterioration. For safety protection, replace only with new bag meeting original equipment specifications.
35. Look behind to make sure the area is clear before placing the transmission in reverse and continue looking behind while backing up. Disengage blades before shifting into reverse and backing up.
36. This unit should not be driven up a ramp onto a trailer or truck under power, because the unit could tip over, causing serious personal injury. The unit must be pushed manually to load properly.

---

**This owner's manual covers two different styles of lawn tractors. Examine the hood, grille and fenders on your unit, and determine if it is Style A or Style B as shown below. Follow only the instructions which pertain to your style unit.**



**Style A**



**Style B**

# ASSEMBLY



## NOTE

This unit is shipped WITHOUT GASOLINE or OIL. After assembly, see separate engine manual for proper fuel and engine oil recommendations.

This owner's manual covers various models of lawn tractors. The units illustrated may vary from your unit. Follow only the instructions which pertain to your style unit (refer to page 4).

## BATTERY INFORMATION



### WARNING

- A. Battery acid must be handled with great care as contact with it can burn and blister the skin. It is also advisable to wear protective clothing (goggles, rubber gloves and apron) when working with it.\*
- B. Should battery acid accidentally splatter into the eyes or onto the face, rinse the affected area immediately with clean cold water. If there is any further discomfort, seek prompt medical attention.
- C. If acid spills on clothing, first dilute it with clean water, then neutralize with a solution of ammonia/water or baking soda/water.
- D. Since battery acid is corrosive, do not pour it into any sink or drain. Before discarding empty electrolyte containers, rinse them with a neutralizing solution.
- E. NEVER connect or disconnect charger clips to battery while charger is turned on as it can cause sparks.
- F. Keep all lighted materials (cigarettes, matches, lighters) away from the battery as the hydrogen gas generated during charging can be combustible.
- G. As a further precaution, only charge the battery in a well-ventilated area.

**\*Always shield eyes, protect skin and clothing when working near batteries.**



### DANGER

Battery contains sulfuric acid. Antidote: EXTERNAL—Flush with water. INTERNAL—Drink large quantities of water or milk. Follow with milk of

magnesia, beaten egg or vegetable oil. Seek prompt medical attention. EYES: Flush with cool water for at least 15 minutes, then seek immediate medical attention.

Since batteries produce explosive gases, keep all lighted materials (cigarettes, lighters, matches, etc.) away. Be sure to charge battery only in well-ventilated areas.

KEEP BATTERIES OUT OF THE REACH OF CHILDREN.

## ACTIVATING THE BATTERY

1. Place the battery to be filled on a workbench. Never activate a battery in the unit.
2. Slip one end of battery drain tube on the battery manifold.
3. Remove the fill caps from all cells.
4. Fill each cell carefully using 1.265 specific gravity electrolyte. Fill each cell to the top of the separators. Do not overfill.
5. Let the battery sit for 20 minutes to allow the chemical reaction to take place.
6. Charge the battery at a MAXIMUM RATE OF 5 AMPS. until the specific gravity reads 1.265. Use a hydrometer to check the specific gravity.



### CAUTION

An excessive rate of charge will damage the battery.

7. Check the level of electrolyte. Adjust level to bottom of split ring if necessary with electrolyte.
8. Replace fill caps.



### CAUTION

After battery has been in service, add only distilled water, or pure drinking water. DO NOT ADD ACID.



## NOTE

This engine is equipped with an alternator. The current for the battery charger alternator is unregulated. During normal operation, it is only necessary to charge the battery:

1. When it is activated for the first time.
2. Before winter storage.
3. Before using the lawn tractor after winter storage.

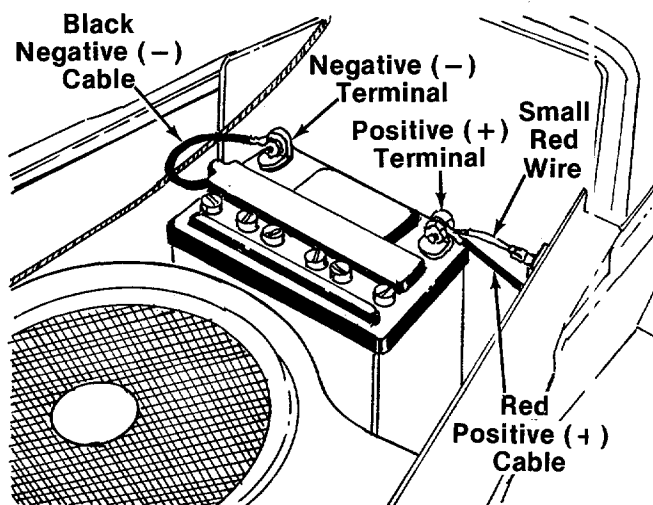


FIGURE 1.

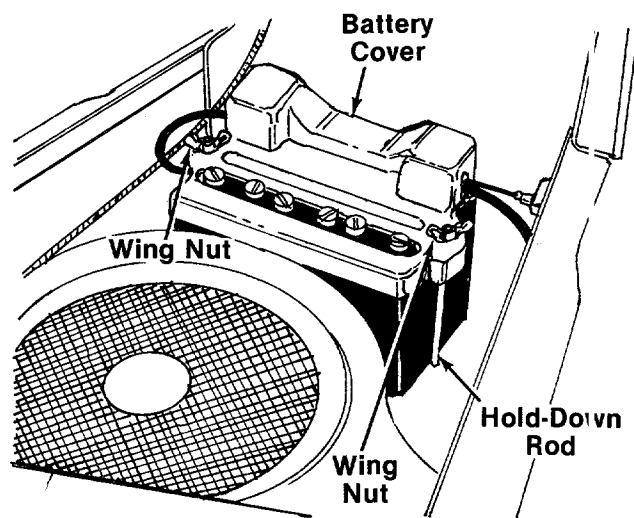


FIGURE 2.

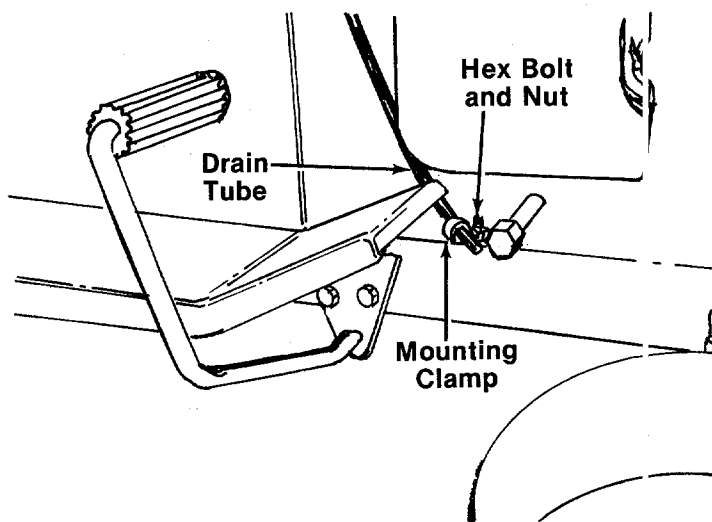


FIGURE 3.

## INSTALLING THE BATTERY



### NOTE

The positive battery terminal is marked Pos. (+). The negative battery terminal is marked Neg. (-).

1. Place the battery on the battery plate with the terminals towards the rear of the tractor.
2. Attach the positive cable (heavy red wire) and the small red wire (from the circuit breaker) to the positive battery terminal (+) with a  $\frac{1}{4}$ -20 x  $\frac{3}{4}$ " long bolt, lock washer and hex nut provided in the battery pack. See figure 1.
3. Attach the negative cable (heavy black wire) to the negative battery terminal (-) with the other  $\frac{1}{4}$ -20 x  $\frac{3}{4}$ " long bolt, lock washer and hex nut.

4. Hook one hold-down rod into the hole in the battery plate beside the battery. See figure 2. Place the battery cover in position over the hold-down rod. Secure with wing nut. Attach other hold-down rod to the other side of battery cover in the same manner.

5. Route the battery drain tube down beside the oil drain pipe on the right side of the tractor.

**11 H.P. Tractor**—Secure battery drain tube to oil drain pipe with plastic tie provided. Cut off excess end of plastic tie.

**16 H.P. Tractor**—Slip the end of the drain tube into the mounting clamp provided in hardware pack. Secure the mounting clamp to the tractor by placing the clamp over the hex bolt and nut which hold the engine pulley belt guard to the frame. Secure in place with hex lock nut provided in hardware pack. See figure 3.



### NOTE

The vented battery allows any gases or liquid from the battery to be drained onto the ground.

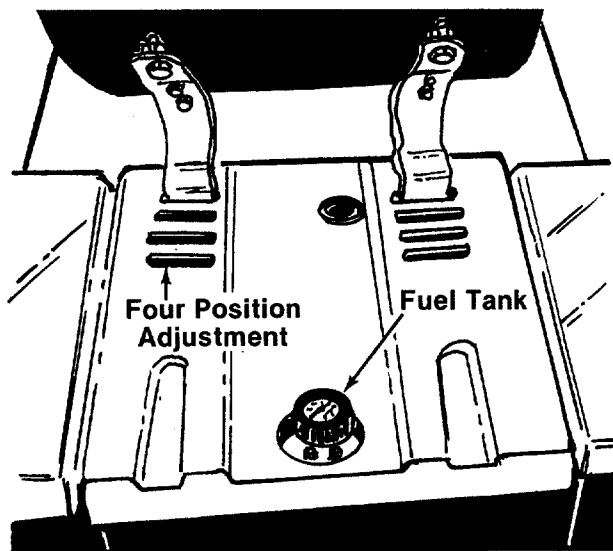


FIGURE 4A.—Style A

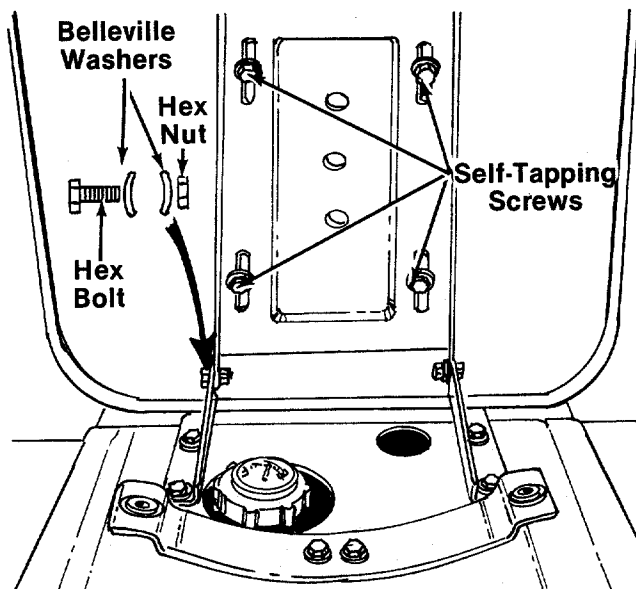


FIGURE 4B.—Style B

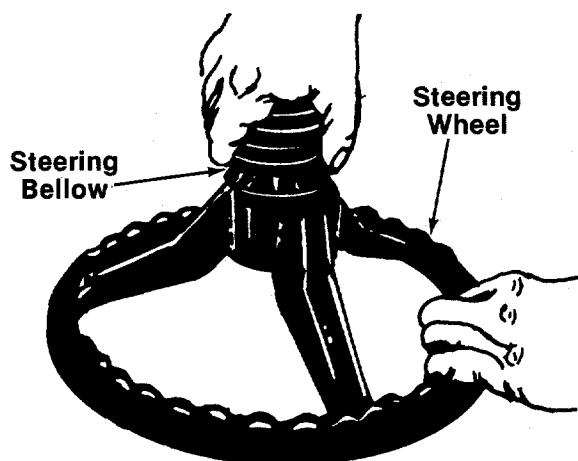


FIGURE 5.—Style B

## SEAT ASSEMBLY

### Style A:

The seat can be adjusted to four positions. With the seat tipped forward, hook the front of the seat spring into the slots on the tractor frame. Allow the seat to pivot backwards until it rests on the rear of the springs. See figure 4A.

### Style B:

Place the seat in position against the seat brackets. Secure each side of seat with  $\frac{3}{4}$ " long hex bolt, two belleville washers (on the inside and outside) and hex lock nut. Crown side of washers should be against the head of the bolt and the nut. See figure 4B.

## STEERING WHEEL INSTALLATION

1. **Style B only:** There are four height positions for the steering wheel. For shipping purposes, the steering shaft is assembled in the lowest position. Lift the hood of the tractor. Remove the hairpin cotter and clevis pin on the steering shaft. Raise the shaft to desired position and secure with hairpin cotter and clevis pin. See reference numbers 56 and 57 on page 28.
2. **Style B only:** Attach the plastic steering bellow to the steering wheel as shown in figure 5.

### NOTE

One end of the steering bellow is slightly larger than the other. The larger end must be assembled to the steering wheel.

3. Place steering wheel over the steering shaft, lining up the flats in the wheel with the flats on the shaft.

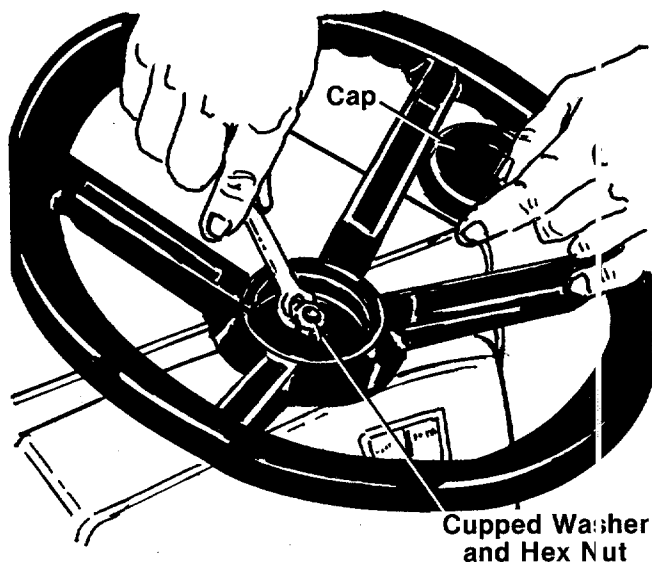


FIGURE 6.

## CONTROLS

### IGNITION SWITCH

The ignition switch is located in the center of the dashboard. Turn the key to the START position to start the engine. When the engine is running, leave the key in the ON position. To stop the engine, turn the key to the OFF position. See figure 7.



Remove the key from the tractor when the tractor is not in use to prevent accidental starting.

### THROTTLE CONTROL

The throttle control is located on the left side of the dashboard and is used to regulate the engine speed. See figure 7. The engine should be operated from  $\frac{3}{4}$  to full throttle (FAST) when operating any equipment that uses the tractor engine as a source of power such as the moving deck, snow thrower or rotary tiller.

### CHOKE CONTROL (16 H.P. only)

The choke control is located on the right side of the dashboard and is operated manually. Details for the choke operation are covered in the separate engine manual packed with your unit. See figure 7.

### LIGHT SWITCH

The head lamps are operated by pushing the light switch located on the dashboard. The head lamps will only operate when the engine is running. See figure 7.

4. Secure with cupped washer (cupped side against the steering wheel) and hex nut. See figure 6.

5. Press the steering wheel cap on the steering wheel by hand.

### TIRE PRESSURE

For shipping purposes, the tires on your unit may be over-inflated. Tire pressure should be reduced before unit is put into operation. Recommended operating tire pressure should be 10 p.s.i.

Check sidewall of tire for manufacturer's maximum tire pressure. If this information does not appear on your tire, maximum tire pressure under any circumstances is 30 p.s.i. Equal tire pressure should be maintained on all tires.

### AMMETER

The ammeter registers the rate of battery charge or discharge. The ammeter will register on the discharging side with starting the engine. It should register on the opposite side (charging) when the engine is running in the fast position until the battery is completely charged. With a fully charged battery or with the engine idling, the ammeter will not show a charge. See figure 7.

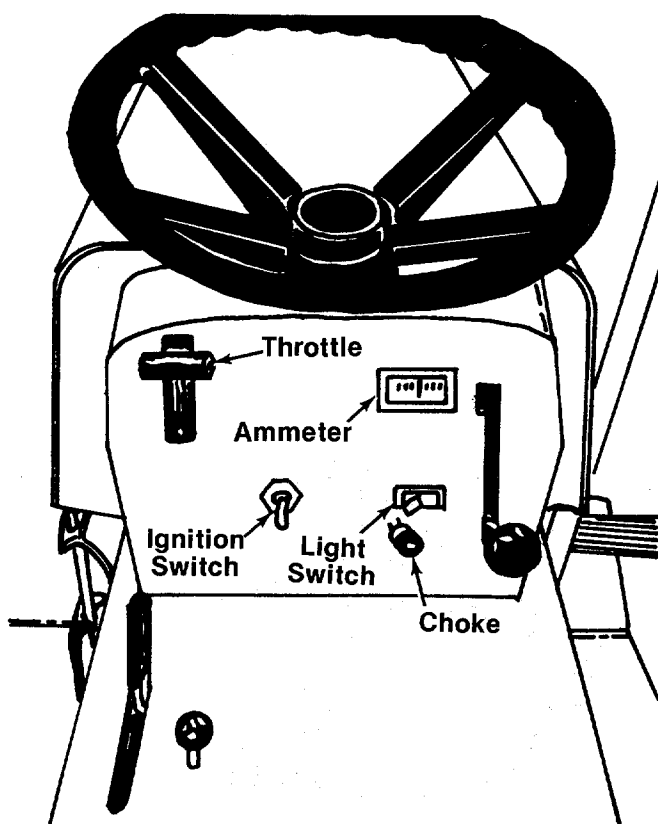


FIGURE 7.—16 H.P. Model Shown



### GASOLINE TANK

The gasoline tank is located under the tractor seat. Tip the seat forward to fill the tank. Refer to figure 4.

### GEAR SHIFT LEVER

The transaxle has five forward gears, neutral and reverse. Do **not** shift through the gears on the transaxle as you would in an automobile. Pre-select the gear appropriate for the job you are doing. See figure 8.

You must depress the clutch-brake pedal and come to a complete stop before shifting gears.

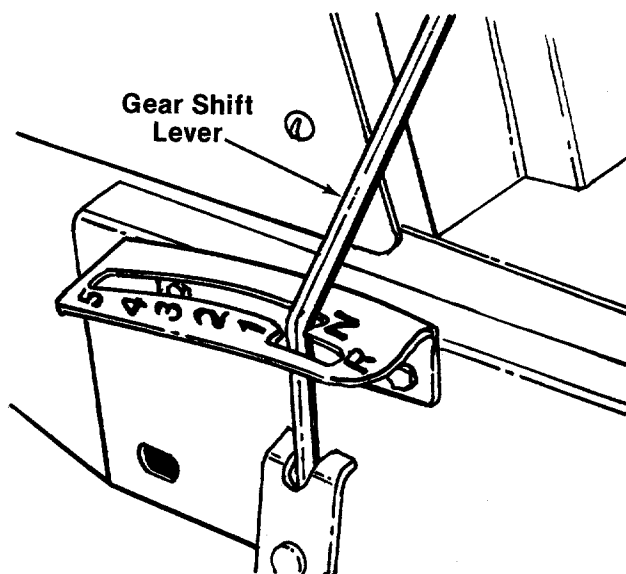


FIGURE 8.

### CLUTCH-BRAKE PEDAL

The clutch-brake pedal is located on the right side of the tractor. See figure 9. Depressing the clutch-brake pedal part way disengages the clutch. Pressing the pedal all the way down disengages the clutch and engages the disc brake.



#### NOTE

The clutch-brake pedal must be depressed to start the engine.

### PARKING BRAKE

To set the parking brake, depress the clutch-brake pedal and pull up the parking brake knob. It will stay in the raised position. To release the parking brake, depress and release the clutch-brake pedal. See figure 9.

### INCLINE ASSISTANCE BRAKE LEVER

When stopping on a hill, hold the incline assistance brake lever back while you release the clutch-brake pedal until the tractor begins to move, then release the lever. This lever permits smoother starts and clutch engagement by holding the tractor during the brake release/clutch engagement operation. See figure 9.

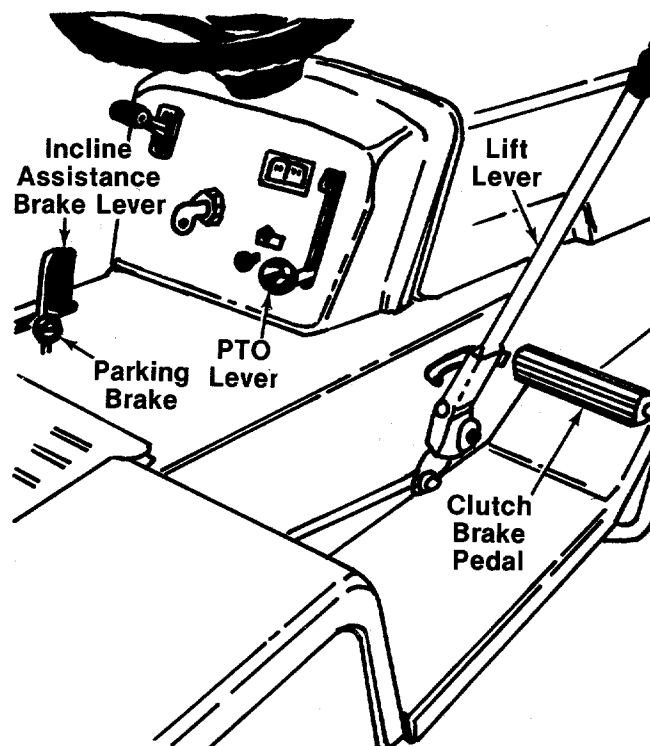


FIGURE 9.

### LIFT LEVER

The five position lift lever is used to change the operating position of the attachments. To operate, pull the lever towards you. To release, move the lever to the right and then forward. See figure 9.

### POWER TAKE-OFF (PTO) LEVER

The PTO lever is located on the right side of the dashboard. To engage the PTO, lift the lever slowly and lock it into the notch. See figure 9.



#### NOTE

The PTO lever **must** be in the disengaged position (down) when starting the engine and when shifting into reverse.

## OPERATION



### CAUTION

1. Keep all shields in place.
2. Before leaving operator's position:
  - a. Shift transmission to neutral
  - b. Set parking brake
  - c. Disengage attachment clutch
  - d. Shut off engine
  - e. Remove ignition key
3. Wait for all movement to stop before servicing machine.
4. Keep people and pets a safe distance away from machine.
5. Look to the rear before backing up.

## PREPARATION



### NOTE

When packaged for shipment, the machine contains no oil or gasoline. Before starting the engine, oil must be added to the engine crankcase and gasoline to the tank. **DO NOT** mix oil with gasoline.

1. Put oil in engine crankcase. Refer to separate engine manual packed with your unit for engine oil recommendations.
2. Fill the fuel tank with clean, fresh, lead-free, low-lead or regular grade leaded gasoline.

## OPERATING THE TRACTOR



### NOTE

This unit is equipped with a safety interlock system for your protection. The purpose of the safety interlock system is to prevent the engine from cranking or starting unless the clutch-brake pedal is depressed and the PTO lever is in the disengaged position. In addition, the PTO lever must be in the disengaged position when the unit is put into reverse or the engine will shut off.



### WARNING

Do not operate the tractor if the interlock system is malfunctioning because it is a safety device, designed for protection.

1. Place the PTO lever in the disengaged (down) position.
2. **16 H.P. Only**—Pull out the choke control. A warm engine requires less choking.
3. Set the throttle control in the FAST position.
4. Depress the clutch-brake pedal and hold it down.
5. Turn the ignition key to the START position. After the engine starts, release the key.
6. **16 H.P. Only**—Slowly push in the choke as the engine warms up.
7. With the clutch-brake pedal depressed, move the gear shift lever into one of the forward gears or reverse.
8. Slowly release the clutch-brake pedal and the tractor will move forward.
9. When stopping, depress the clutch-brake pedal. This will apply both the clutch and the brake.
10. To shut off the engine, turn the ignition key to the left to the OFF position. Remove the key to prevent accidental starting while equipment is unattended.



### IMPORTANT

If you strike a foreign object, stop the engine. Remove wire from spark plug, thoroughly inspect the mower for any damage, and repair the damage before restarting and operating the mower.

## ADJUSTMENTS



### WARNING

Disconnect the spark plug wire and ground against the engine before performing any adjustments, repairs or maintenance.

## SEAT ADJUSTMENT

### Style A:

The tractor seat is adjustable to four positions. To change positions, tip the seat all the way forward and lift it out of the slots on each side. Refer to figure 4A.

### Style B:

To adjust the position of the seat, loosen the four self-tapping screws on the bottom of the seat. See figure 4B. Slide the seat forward or backward as desired. Retighten the self-tapping screws.

## REAR WHEEL TRACK ADJUSTMENT

The distance between the rear wheels can be changed from wide to narrow by removing the rear wheels one at a time and reversing them on the hub.

With the rear wheels in the narrow position, the outside of the rear wheels is even with the outside of the front wheels.

With the rear wheels in the wide position, the inside of the rear wheels is even with the outside of the front wheels.

## BRAKE ADJUSTMENT

During normal operation of this machine, the brakes are subject to wear and will require periodic examination and adjustment.



### CAUTION

Do not adjust the brake while the engine is running. Be sure to block the wheels of the tractor before making the brake adjustment.

1. Loosen the jam nut. See figure 10.

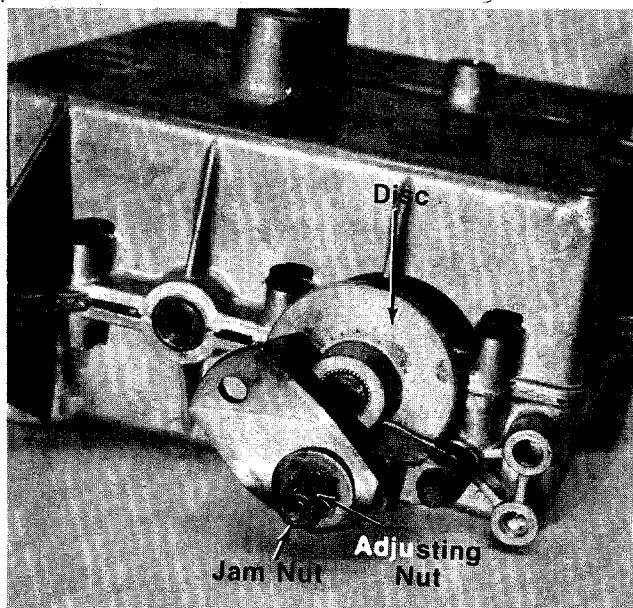


FIGURE 10.

2. Turn the adjusting nut in until it locks the disc.
3. Back off the adjusting nut one complete turn.
4. Tighten the jam nut.

## CARBURETOR ADJUSTMENTS



### WARNING

If any adjustments are made to the engine while the engine is running (e.g. carburetor), disengage all clutches and blades. Keep clear of all moving parts. Be careful of heated surfaces and muffler.

Minor carburetor adjustments may be required to compensate for differences in fuel, temperature, altitude and load.

Refer to separate engine manual for carburetor adjustment information.

## STEERING WHEEL ADJUSTMENT

### Style B Only:

There are four height positions for the steering wheel. To adjust the height of the steering wheel, remove the hairpin cotter and clevis pin on the steering shaft. Place the steering wheel in the position desired and secure with hairpin cotter and clevis pin. See reference numbers 56 and 57 on page 28.

## LUBRICATION

### STEERING GEARS

Wipe off the old grease and dirt. After every 25 hours of operation place an automotive multi-purpose grease in the teeth of the segment and pinion gears. See figure 11.

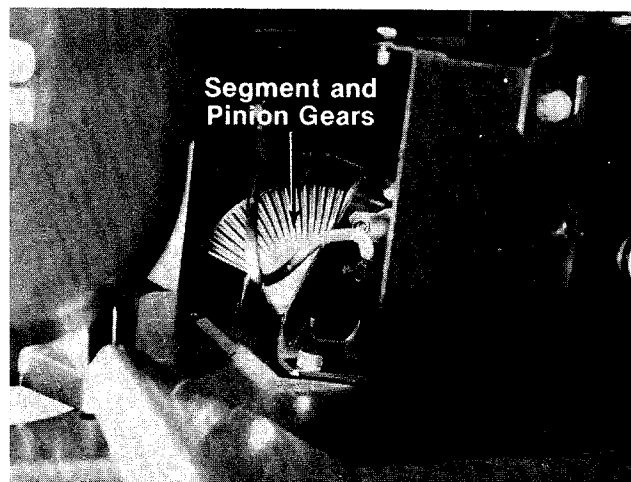


FIGURE 11.

## TRANSAXLE

The transaxle is lubricated and sealed at the factory. It is not necessary to check the lubrication level unless the transaxle is disassembled for repair. The transaxle is lubricated with 24 ounces of E.P. Lithium grease. See figure 12.

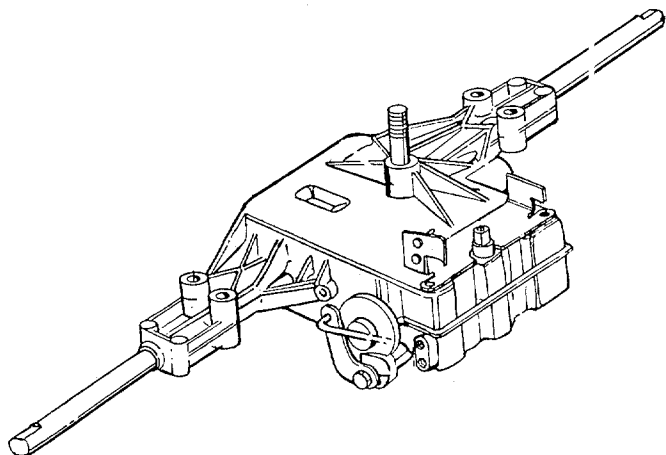


FIGURE 12.

## LINKAGE

Once a season lubricate all the pivot points on the clutch, brake and lift linkage with SAE 30 engine oil.

## FRONT WHEELS

The front wheels are provided with grease fittings. Lubricate at least once a season with automotive multi-purpose grease.

## PIVOT POINTS

Lubricate all pivot points with light oil at least once a season.

## BALL JOINTS

The ball joints and drag link ends are permanently lubricated.

# MAINTENANCE



**WARNING**

Disconnect the spark plug wire and ground against the engine before performing any adjustments, repairs or maintenance.

## TROUBLE SHOOTING

Refer to the chart on page 17 for trouble shooting engine problems.

## CRANKCASE OIL

To ensure maximum engine performance, perform the following periodic maintenance:

Check the oil level in the crankcase before each use of the machine and after every two hours of operation. Keep the oil level between ADD and FULL. See figure 13.

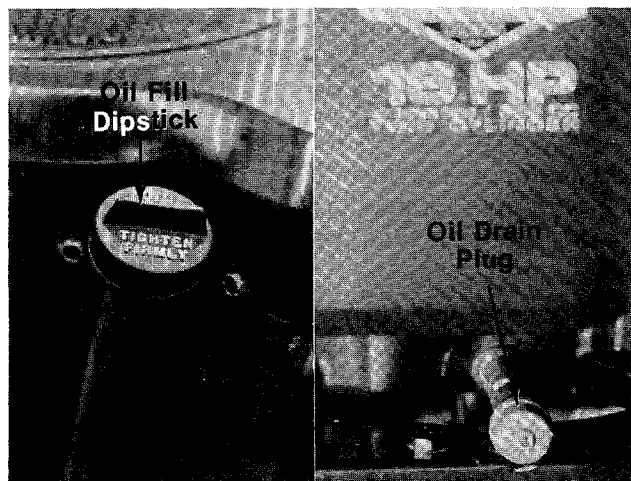


FIGURE 13.—16 H.P. Model Shown

After the first two hours of operating a new engine, drain the oil (see figure 10) from the crankcase while engine is still hot and refill crankcase with new oil; thereafter change the oil after every 25 hours of operation. This procedure ensures minimum wear of engine parts. To change the oil, proceed as follows:

- Step 1. Remove oil drain plug.
- Step 2. Drain the oil.
- Step 3. Replace oil drain plug.
- Step 4. Refill crankcase with oil. Refer to separate engine manual for quantity and type of oil.

## FUEL SHUT-OFF VALVE AND FILTER (Optional) Style A Only

The valve and filter is located on the bottom of the gasoline tank located at the extreme rear of the tractor.

Turn the valve knob in to shut off the fuel flow. Turn the valve knob out to operate the tractor. See figure 14.

The entire valve can be pulled out to clean the filter. When reassembling, place the rubber grommet into the gasoline tank first, then push the valve all the way in.



### WARNING

Only use factory approved parts if repairs are needed on the gasoline tank, grommet, valve or gasoline line.

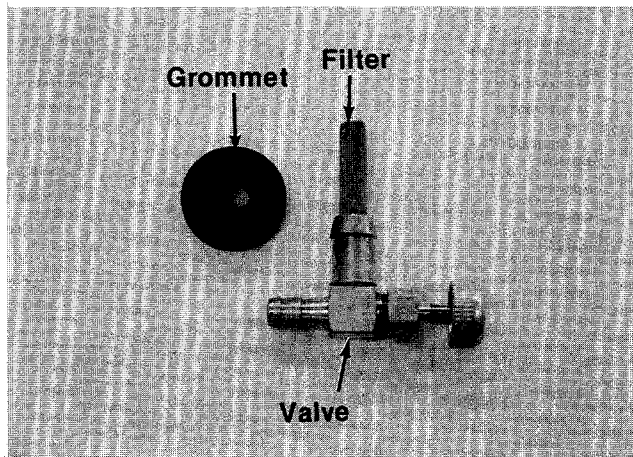


FIGURE 14.

### FUEL FILTER

If your unit does not have a fuel shut-off valve, it is equipped with a replaceable in-line fuel filter. Replace filter whenever contamination or discoloration is noticed. Order replacement filter through your authorized engine service dealer.

### WHEEL ALIGNMENT

The front wheels should toe-in approximately  $1/8$ ". Measure the distances A and B on the front wheels. See figure 15.



### NOTE

Dimension B should be approximately  $1/8$  inch less than dimension A.

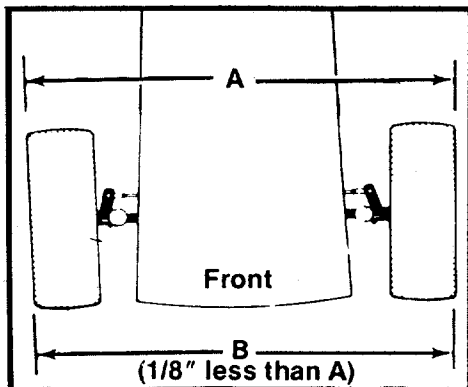


FIGURE 15.

To adjust the toe-in, loosen the hex jam nut, remove the elastic lock nut, lift the tie rod end out of the hole in the steering arm and screw the tie rod end in or out as necessary. See figure 16.

Reassemble the tie rod end after the correct alignment is made.

### DRAG LINK

If the drag link or ball joints are changed, the new assembly must be adjusted to the exact same length as the original. If adjusted incorrectly, it will allow the tractor to turn sharper one direction than the other.

To take off the drag link, remove the nuts and lock washers holding the ball joint to the steering gear and left front axle bracket. See figure 16.

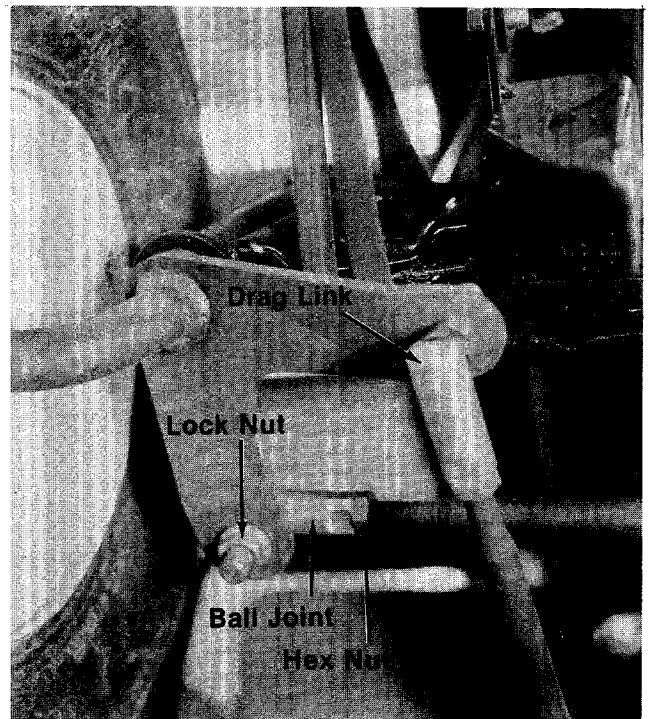


FIGURE 16.

### ENGINE

Refer to separate engine manual for all engine maintenance procedures.

### MAINTENANCE OF BATTERY

1. Check electrolyte level periodically (at least every two weeks). Keep the level to the split rings. Use only distilled water or a good quality drinking water. Never add acid or any other chemicals to the battery after initial activation.

2. The battery should be checked with a hydrometer after every 25 hours of operation. If the specific gravity is less than 1.225, the battery should be recharged. Maximum charge rate 5 AMPS.
3. Coat the terminals and exposed wire with a thin coat of grease or petroleum jelly for longer service and protection against corrosion.
4. The battery should be kept clean. Any deposits of acid should be neutralized with soda and water. Be careful not to get this solution in the cells.
5. Avoid tipping the battery. Even a "sealed" battery will leak electrolyte when tipped.

#### STORAGE OF THE BATTERY

1. Charge battery using normal methods. NEVER store discharged battery as it will not recover.
2. When storing battery for extended periods, disconnect battery cables. Removing battery from unit is recommended.
3. Store in cold, dry place.
4. Recharge battery whenever the specific gravity is less than 1.225, before returning to service, or every two months, whichever occurs first.

#### COMMON CAUSES FOR BATTERY FAILURE:

1. Overcharging
2. Undercharging
3. Lack of water
4. Loose hold downs and/or corroded connections
5. Excessive loads
6. Battery electrolyte substitutes
7. Freezing of electrolyte



#### NOTE

These failures do not constitute warranty.

#### BATTERY REMOVAL OR INSTALLATION



#### WARNING

When removing the battery, follow this order of disassembly to prevent your wrench from shorting against the frame.

1. Remove the Negative cable.
  2. Remove the Positive cable.
- To install a battery:
1. Attach the Positive cable.
  2. Attach the Negative cable.

#### JUMP STARTING

1. Attach the first jumper cable from the Positive terminal of the good battery to the Positive terminal of the dead battery.
2. Attach the second jumper cable from the Negative terminal of the good battery to the FRAME OF THE UNIT WITH THE DEAD BATTERY.



#### WARNING

Failure to use this starting procedure could cause sparking, and the gases in either battery could explode.

#### INSTALLATION OF TIRE TO RIM



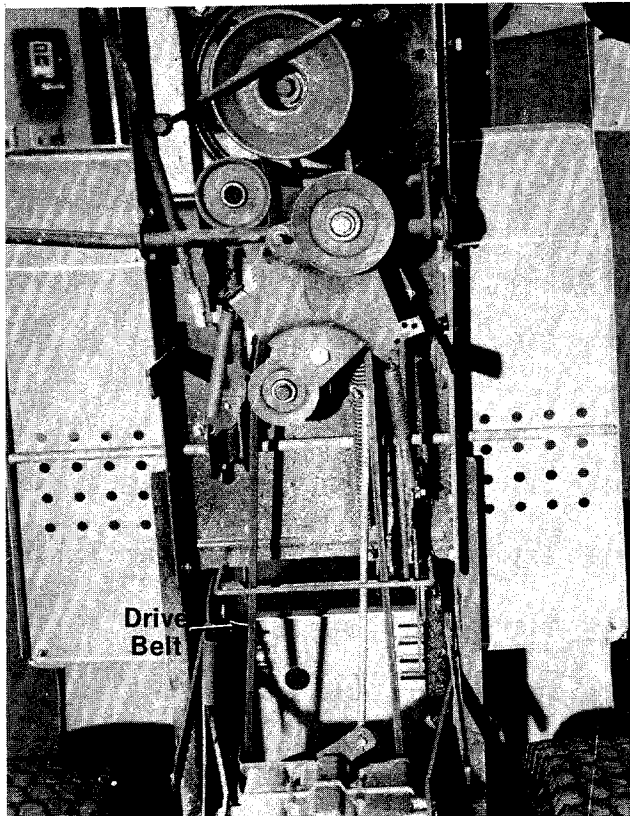
#### WARNING

The following procedure must be followed when removing or installing a tire to the rim.

1. Be sure rim is clean and rust free.
2. Lubricate both the tire and rim generously.
3. Never inflate to over 30 p.s.i. to seat beads. Excessive inflation pressure when seating beads may cause tire/rim assembly to burst with force sufficient to cause serious injury.

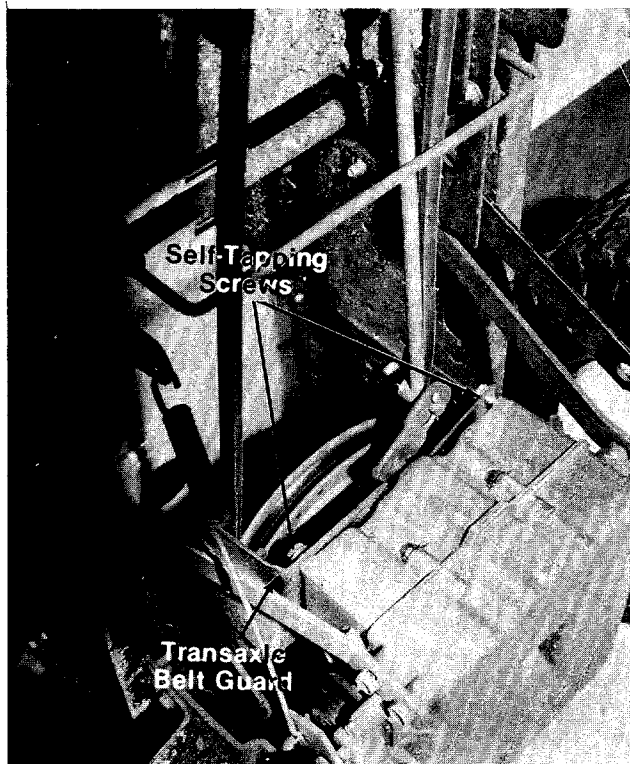
#### CHANGING THE DRIVE BELT

1. If a cutting deck is attached to your tractor, remove it. Remove the battery.
2. Depress the clutch pedal and set the parking brake.
3. Raise and block the front wheels of the tractor so you can work under it.



**FIGURE 17.**

4. Remove the transaxle belt guard by removing the two self-tapping screws. See figure 18.
5. Unhook the V-belt from the transaxle pulley.



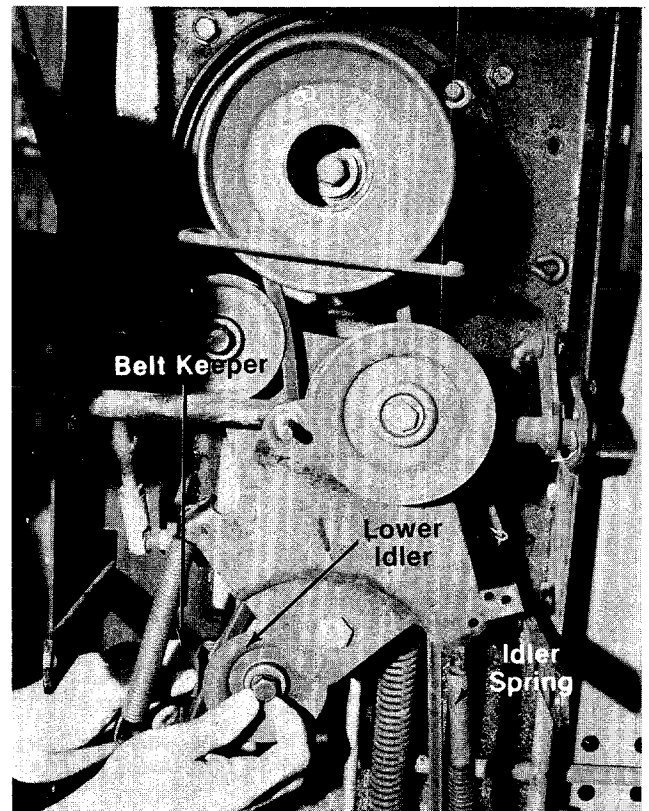
**FIGURE 18.**

6. Remove the lower idler by taking out the center bolt and nut.



When reassembling the idler be sure to place the belt keeper in the correct position. See figure 19.

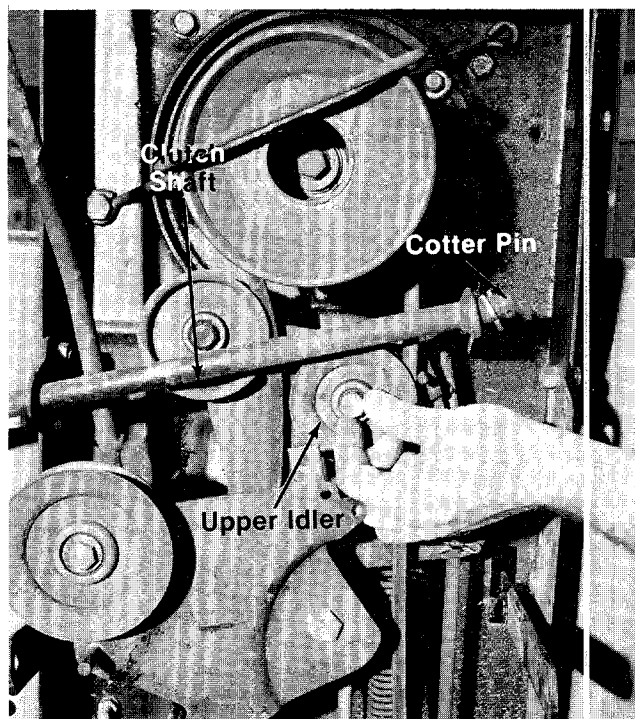
7. Unhook the idler spring so the idler will swing out of your way.



**FIGURE 19.**

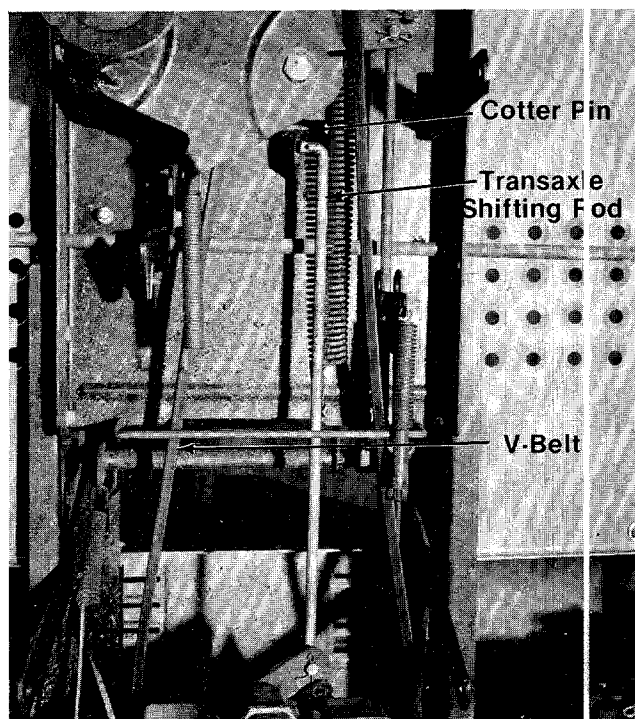
8. Remove the cotter pin from the clutch shaft and pull it out of the bracket. See figure 20.
9. Remove the upper idler.





**FIGURE 20.**

10. Remove the cotter pin from the transaxle shifting rod and pull it out of the bracket. See figure 21.
11. The drive belt can now be removed.
12. Reassemble the new belt in reverse order.



**FIGURE 21.**

## OFF-SEASON STORAGE

If the machine is to be inoperative for a period longer than 30 days, prepare for storage as follows.

1. Clean the engine and the entire unit thoroughly.
2. Lubricate all lubrication points. Wipe the entire machine with an oiled rag to protect the surfaces.
3. Refer to the engine manual for correct engine storage instructions. The engine must be completely drained of fuel to prevent gum deposits from forming on essential carburetor parts, fuel lines and fuel tanks.
4. Refer to battery storage instructions on page 14.
5. Store unit in a clean, dry area.

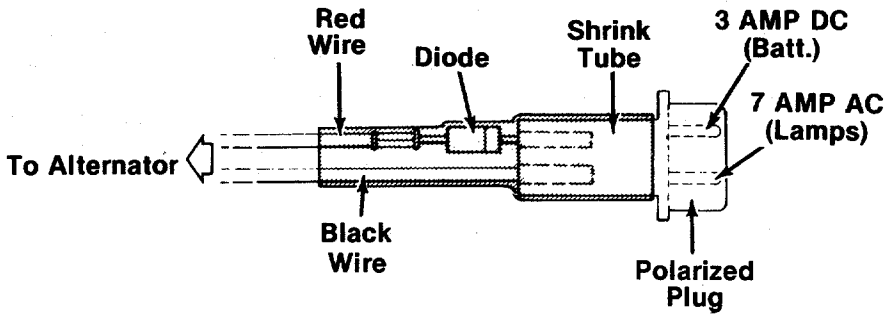


### CAUTION

When storing any type of power equipment in an unventilated or metal storage shed, care should be taken to rust proof the equipment. Using a light oil or silicone, coat the equipment, especially any chains, springs, bearings and cables.



# TROUBLE SHOOTING CHART FOR ELECTRIC START MODELS

TROUBLE	LOOK FOR	REMEDY
Engine will not crank	Battery installed incorrectly	The battery must be installed with the negative, identified at the terminal post by (Neg, N or -), grounded. The positive (Pos, P or +) attaches to the large cable from the solenoid. The small red wire from the fuse holder or circuit breaker is also attached to the positive terminal.
	Blown fuse or circuit breaker	Replace fuse with 7½ amp. fuse ¼ x 1¼" lg. Circuit breaker will reset itself when it cools off. Fuses or circuit breakers seldom open or fail without a reason. The problem must be corrected. Check for loose connections in the fuse holder. Replace fuse holder if necessary. A dead short may be in the cranking or charging circuit where the insulation may have rubbed through and exposed the bare wire. Replace the wire or repair with electrician's tape if the wire strands have not been damaged. Note: Look for a wire pinched between body panels, burned by the exhaust pipe or muffler or rubbed against a moving part.
	Battery is dead or weak	<p>Use a hydrometer to check the condition of the battery. The Specific Gravity (s.g.) should be 1.265 at 80°F. (1.215 s.g. minimum needed for cranking engine). The reason for the battery failing must be determined. (1) Defective battery. Battery will not accept or hold a full charge. (2) Short circuit. Check for grounded wire. (3) Charging system not working, either engine alternator or trickle charger.</p> <p><b>Trickle Charger.</b> Check with multimeter. Charger 725-0578—input 120 V A.C., no load output 13.5 V D.C., rated load current 1 amp. Charger 725-0507—input 120 V A.C., no load output 17.4 V D.C., rated load current 1½ amp.</p> <p><b>Alternator</b> (dual or single circuit) The charging system is an alternator located under the flywheel. It is unregulated and rated 3 amp. at 3600 r.p.m. A diode (rectifier) is located in the output lead just before the wire harness plug on the engine side.</p> <div style="text-align: center;">  </div> <p>The diode changes A.C. to D.C. to charge the battery. A bad diode can either fail to charge the battery or discharge the battery if the alternator is shorted as well as the diode. To test: (1) Disconnect charger lead from the battery (small red wire). (2) Connect 12 V small test lamp between the 3 amp. D.C. charge lead and the positive terminal of the battery. (3) With the engine off, the lamp should not light. If it does, the diode and possibly the alternator should be replaced. (4) Start the engine. The lamp should light. If it does not, the alternator (stator) or lead wire is bad and should be replaced.</p>
Engine cranks but will not start	Mechanical failure. (Wires and switches)	The interlock system includes two mechanical activated switches which are wired in series in the circuit used to energize the starter solenoid. While testing the interlock system, you will make the mower temporarily unsafe by permitting the engine to be started with the blade and clutch engaged. <b>WARNING:</b> While testing, disengage the clutch, shut off the blade control, set the parking brake and place the gear shift lever in neutral. Attach a wire (minimum 18 gauge) to the positive terminal of the battery and touch the other end to the small terminal on the solenoid. <b>If the engine does not crank:</b> (1) There is a loose connection or poor ground. (2) The solenoid may be bad. The solenoid can be checked by using a heavy wire (#8 gauge minimum) and jumping between the two large terminals. If the engine cranks, the solenoid is bad. (3) If the engine does not crank when you jump the solenoid, have the starter motor tested by an authorized engine dealer. If the engine does crank, the problem is with one of the safety switches, ignition switch or the wire between the fuse holder (or circuit breaker) and the small terminal on the solenoid. Note: Look for a poor connection at the switches or a defective switch. Replace if necessary.
	Throttle or choke not in starting position	Check owner's guide for correct position for throttle control and choke (if separate control) for starting.

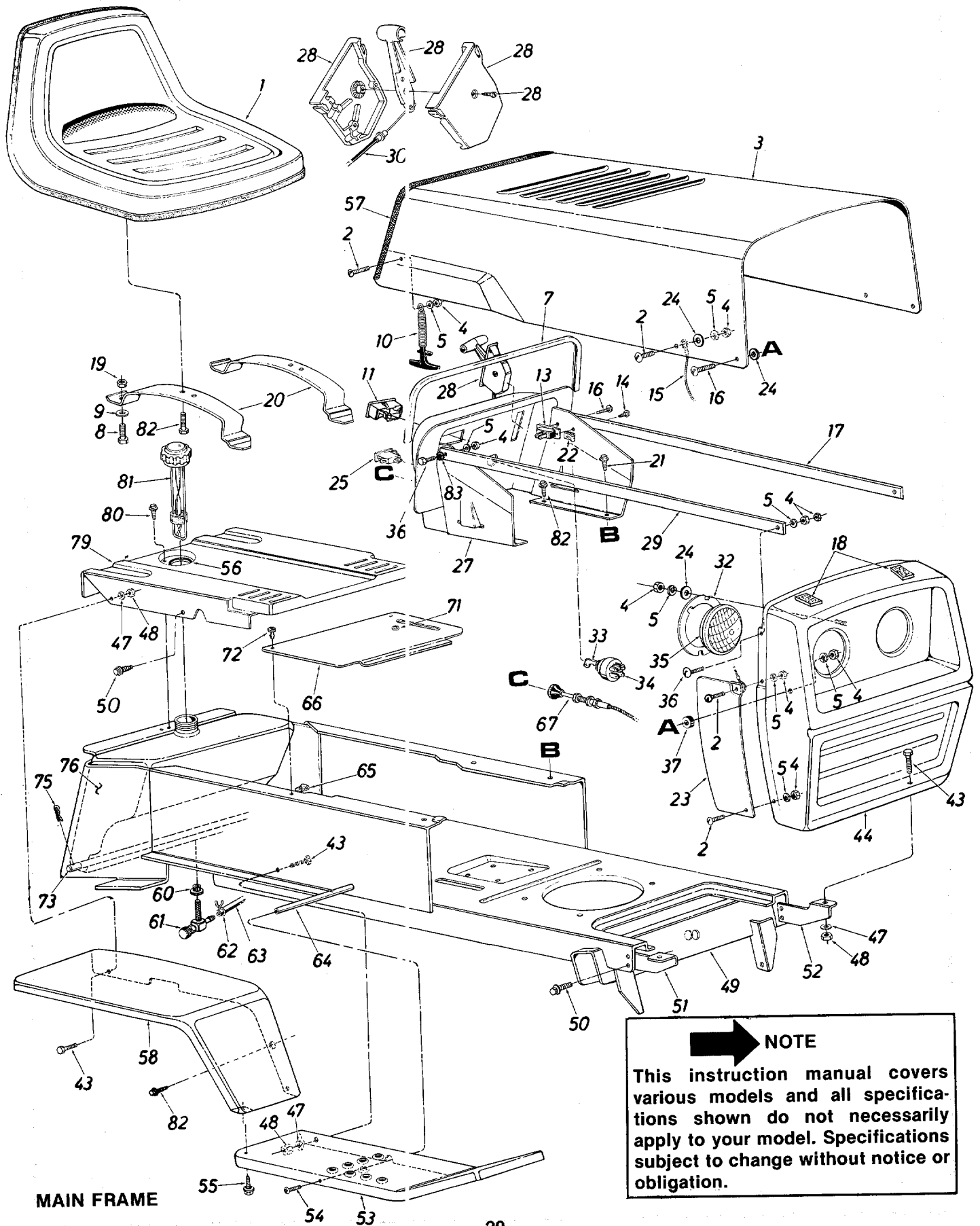
## TROUBLE SHOOTING CHART FOR ELECTRIC START MODELS

TROUBLE	LOOK FOR	REMEDY
	No spark to spark plug	Spark plug lead disconnected. Connect lead. Hold spark plug lead away from engine block about 1/8". Crank engine. There should be a spark. If not, have engine repaired at authorized engine service dealer. Faulty spark plug. To test, remove spark plug. Attach spark plug lead to spark plug. Ground the spark plug body against the engine block. Crank the engine. The spark plug should fire at the electrode. Replace if it does not.
	No fuel to the carburetor	Gasoline tank empty. Fill. Fuel valve shut off. Open valve. Valve is located either at the bottom of the fuel tank or on the carburetor. Fuel line plugged. Remove and clean.
	Air filter dirty	If the air cleaner is dirty, the engine may not start. Clean or replace as recommended by the engine manufacturer.
Engine smokes	Engine loses crankcase vacuum	Dipstick not seated or broken. Replace defective part. Engine breather defective. Replace.
Excessive vibration	Bent or damaged blade spindle	<b>Stop engine immediately.</b> Check all pulleys, blade adapters, keys and bolts for tightness and damage. Tighten or replace any damaged parts.
	Bent blade	<b>Stop engine immediately.</b> Replace damaged blade. Only use original equipment blades.
Mower will not discharge grass or leaves uncut strips	Engine speed low Transmission selection Blades short or dull	Throttle must be set between 3/4 and full throttle. Use lower transmission gear. The slower your ground speed, the better the quality of cut. Sharpen or replace blades (uncut strip problem only).

# NOTES

A large, empty rectangular box with a black border, occupying most of the page below the 'NOTES' header. It is intended for handwritten notes.

# Models 720, 722, 724, 726, 730, 732, 734 and 736

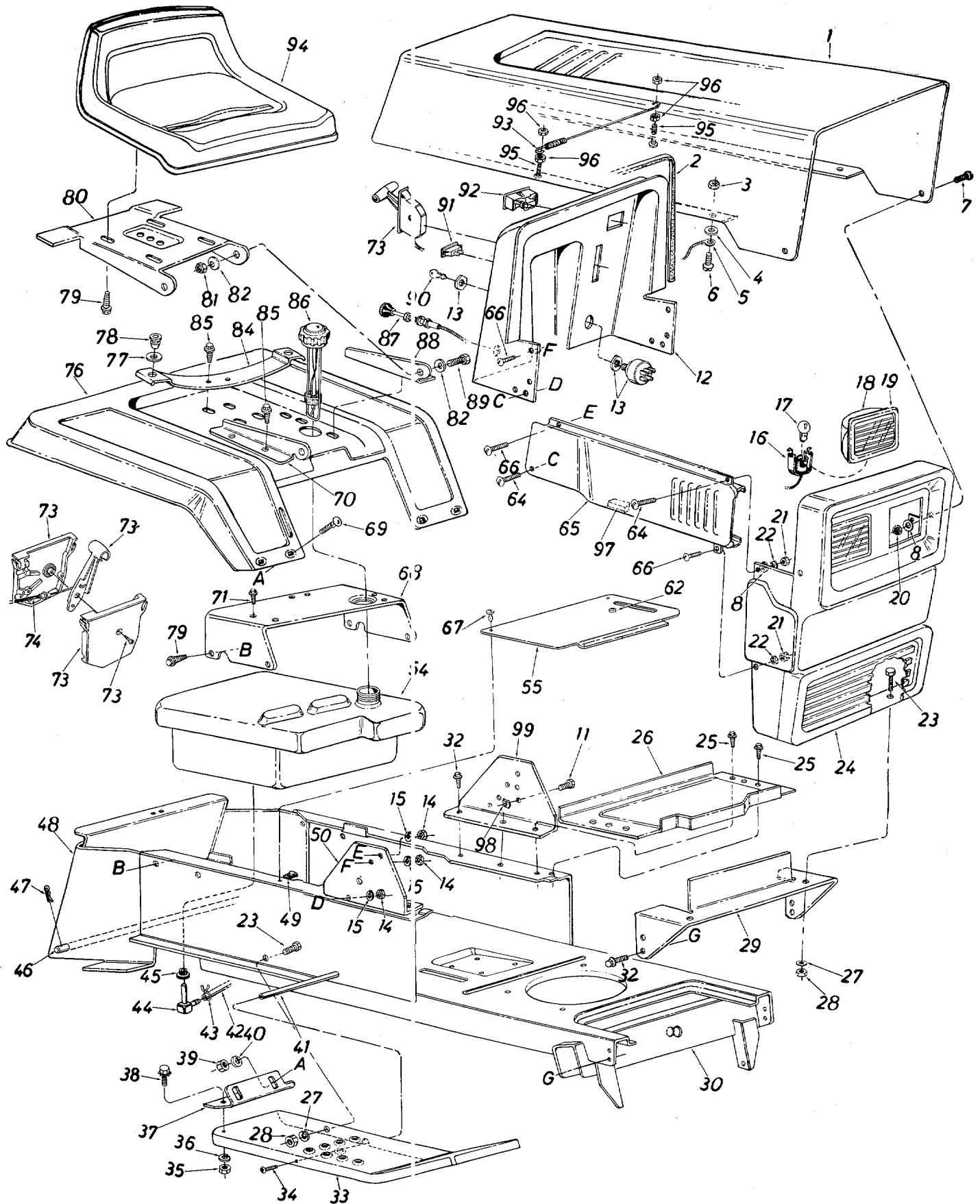


# Models 720, 722, 724, 726, 730, 732, 734 and 736

## PARTS LIST FOR MODELS 720, 722, 724, 726, 730, 732, 734 and 736 LAWN TRACTORS

REF. NO.	PART NO.	COLOR CODE	DESCRIPTION	NEW PART	REF. NO.	PART NO.	COLOR CODE	DESCRIPTION	NEW PART
1	757-0298		Seat Assembly		44	13801 —462		Grille Ass'y. (Painted)	
2	710-0286		Truss Mach. Scr. 1/4-20 x .50" Lg.*			14226		Grille Ass'y. (Chrome)	
3	13808 —447		Hood		47	736-0119		L-Wash. 5/16" Scr.*	
4	712-0287		Hex Nut 1/4-20 Thd.*		48	712-0267		Hex Nut 5/16-18 Thd.*	
5	736-0329		L-Wash. 1/4" Scr.*		49	13820		Lower Frame Ass'y.	
7	731-0511		Vinyl Molding Strip—29"		50	710-0726		Hex Thd. Rolling AB Scr. 5/16 x .75" Lg.	
8	710-0689		Hex Nylon Scr. 1/2-13 x .75" Lg.		51	13862		Grille Mount Brkt.—R.H.	
9	736-0192		FI-Wash. .50" I.D. x 1.00" O.D. x .090		52	13863		Grille Mount Brkt.—L.H.	
10	723-0296		Hood Latch Ass'y.		53	13828 —452		Running Board—R.H.	
11	725-0925		Ammeter			13827 —452		Running Board—L.H. (Not Shown)	
13	725-0459		Circuit Breaker 8 Amp.		54	710-0323		Truss Mach. Scr. 5/16-18 x .75" Lg.*	
14	710-0351		Hex Tap Scr. #10 x .50" Lg.*		55	710-0726		Hex Thd. Rolling Scr. 5/16-24 x .75" Lg.	
15	727-0199		Hood Stop		56	735-0179		Grommet (Gas Tank Neck)	
16	710-0255		Truss Mach. Scr. 1/4-20 x .75" Lg.*		57	731-0511		Vinyl Moulding Strip—30"	
17	749-0220		Grille Positioning Rod		58	13810 —462		Fender Ass'y.—R.H.	
18	722-0135		PVC Foam Strip 1/2 x 1.00" x 2.00" Lg.			13809 —462		Fender Ass'y.—L.H. (Not Shown)	
19	712-0206		Hex Nut 1/2-13 Thd.*		60	735-0143		Bushing (Gas Tank)	
20	13123		Seat Spring		61	751-0171		Fuel Shut-Off Valve (Optional)	
21	710-0599		Hex Thd. Rolling Scr. 1/4" x .50" Lg.			737-0188		90° Nipple (Optional)	
22	712-0344		Speed Nut #10Z		62	726-0199		Hose Clamp 3/8"	
23	14748 —462		Grille Side Panel—R.H.		63	751-0173		Gas Line 46" Lg.	
	14749 —462		Grille Side Panel—L.H. (Not Shown)		64	738-0435		Running Board Rod	
24	736-0173		FI-Wash. 1/4" I.D.		65	726-0156		Speed Nut	
25	725-0634		Light Switch		66	14056		Transmission Cover Ass'y.	
27	15939		Dash Panel Ass'y.		67	746-0394		Choke Control Comp. (16 H.P. Only)	
28	831-0692		Throttle Control Box Comp.		71	731-0405		Snap Bushing	
29	749-0220		Grille Positioning Rod		72	710-0473		Truss Hd. Scr. 1/4-20 x .75" Lg.	
30	746-0501		Throttle Control Wire (11 H.P.)		73	738-0482		Hitch Rod	
	746-0503		Throttle Control Wire (16 H.P.)		75	714-0147		Internal Cotter Pin	
32	09960		Head Lamp Retainer		76	751-0259		Gas Tank	
33	725-0201		Ignition Key		79	13814		Seat Plate	
34	725-0267		Ignition Switch		80	710-0726		Hex Thd. Rolling Scr. 5/16-24 x .75" Lg.	
35	725-0222		Head Lamp		81	723-0346		Gas Gauge	
36	710-0255		Truss Machine Scr. 1/4-20 x .75" Lg.		82	710-0726		Hex Thd. Rolling Scr. 5/16-24 x .75" Lg.	
37	735-0144		Rubber Wash. .50" I.D. x 1.00 O.D. x .25 Thk.		83	736-0222		External Wash. 1/4" I.D.	
43	710-0118		Hex Scr. 5/16-18 x .75" Lg.*						

# Models 721, 723, 725, 727, 731, 733, 735 and 737

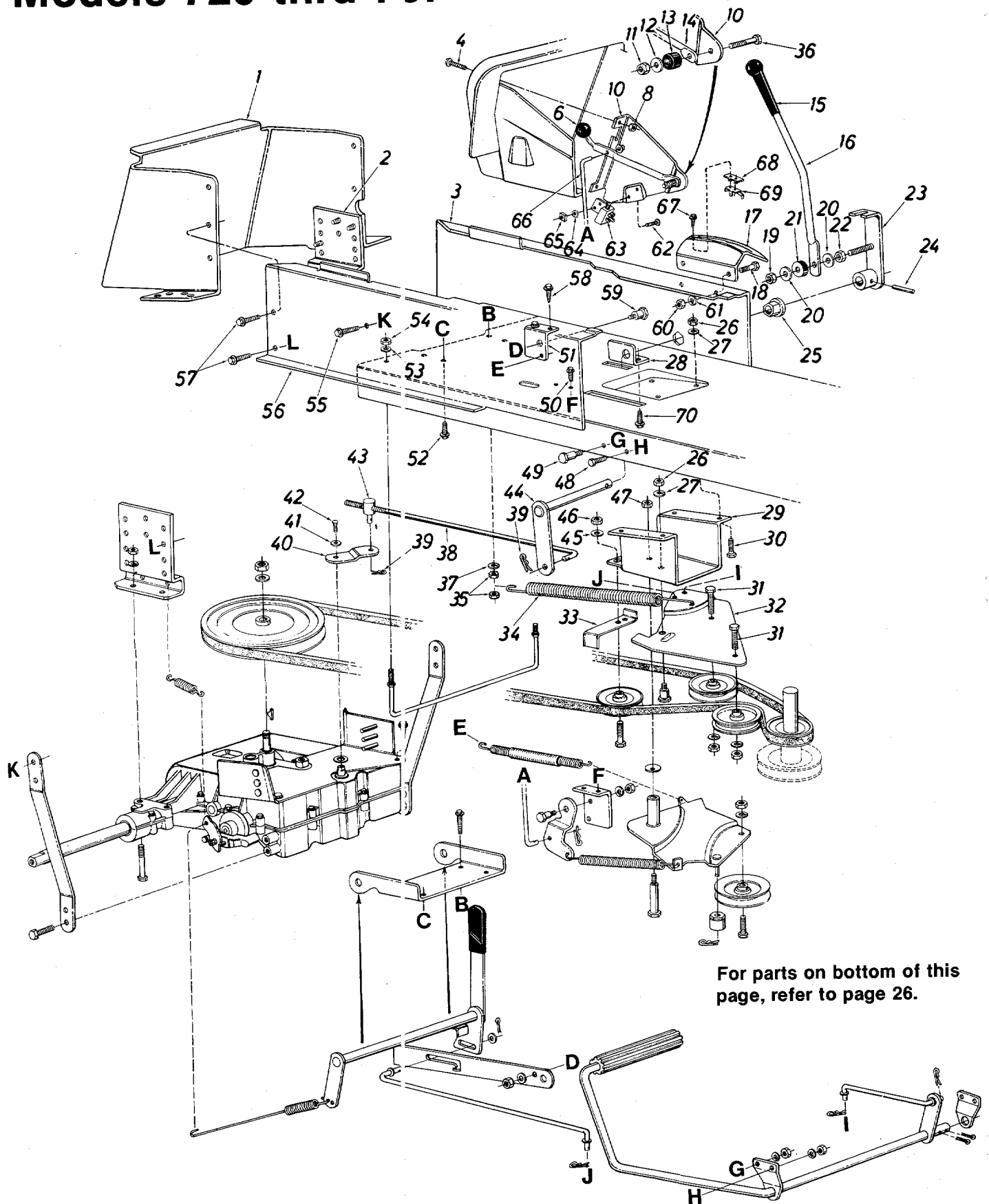


# Models 721, 723, 725, 727, 731, 733, 735 and 737

## PARTS LIST FOR MODELS 721, 723, 725, 727, 731, 733, 735 and 737 LAWN TRACTORS

REF. NO.	PART NO.	COLOR CODE	DESCRIPTION	NEW PART	REF. NO.	PART NO.	COLOR CODE	DESCRIPTION	NEW PART
1	15808		Hood	N	50	15818		Dash Support Brkt.—R.H.	N
2	731-0511		Vinyl Molding Strip—27"		51	712-0267		Hex Nut 5/16-18 Thd.*	
3	712-0272		Hex Sems Nut #10-24 Thd.		52	736-0119		L-Wash. 5/16" I.D.*	
4	736-0931		Fl-Wash. .20" I.D. x .41" O.D.		53	710-0118		Hex Bolt 5/16-18 x .75" Lg.*	
5	727-0290		Hood Stop		54	751-0367		Fuel Tank	N
6	710-0473		Truss Hd. Mach. Scr. #10-24 x .50" Lg.*		55	15831		Transmission Cover Ass'y.	N
7	710-0255		Truss Hd. Mach. Scr. 1/4-20 x .75" Lg.*		62	731-0405		Snap Bushing	
8	736-0463		Fl-Wash. 1/4" I.D.*		64	710-0255		Truss Hd. Scr. 1/4-20 x .75" Lg.*	
11	710-0351		Truss Mach. B-Tap Scr. #10 x 1/2" Lg.		65	15814		Side Panel—R.H.	N
12	15811		Dash Ass'y. (11 H.P.)	N		15815		Side Panel—L.H. (Not Shown)	N
	15812		Dash Ass'y. (16 H.P.)	N	66	710-0286		Truss Mach. Scr. 1/4-20 x .50" Lg.*	
13	725-0267		Ignition Switch		67	726-0151		Fastener	
14	712-0287		Hex Nut 1/4-20 Thd.*		68	15849		Seat Mounting Channel	N
15	736-0329		L-Wash. 1/4" I.D.*		69	710-0167		Carriage Bolt 1/4-20 x .50" Lg.*	
16	725-0964		Socket	N				Seat Bracket—R.H.	N
17	725-0963		Lamp	N	70	15802		Hex Wash. Hd. Self-Tap Scr. 5/16-24 x .50" Lg.	
18	731-0705		Headlight Housing	N	71	710-0600		Hex Wash Hd. Self-Tap Scr. 5/16-24 x .50" Lg.	
19	731-0706		Lens	N	72	710-0600		Throttle Control Box Ass'y.	N
20	712-0107		Hex L-Nut 1/4-20 Thd.		73	831-0692		Throttle Control Wire (11 H.P.)	
21	712-0287		Hex Nut 1/4-20 Thd.*		74	746-0501		Throttle Control Wire (16 H.P.)	
22	736-0329		L-Wash. 1/4" I.D.*			746-0503		Rear Fender	N
23	710-0118		Hex Bolt 5/16-18 x .75" Lg.*		76	15886		Fl-Wash. .53" I.D. x .93" O.D.	
24	15804		Grille (With Headlights)	N	77	736-0160		Grommet	
25	710-0599		Hex Wash. Hd. AB-Tap Scr. 1/4 x .50" Lg.		78	731-0555		Hex Wash. Hd. AB-Tap Scr. 3/8 x .75" Lg.	
26	13379		Battery Plate		79	710-0623		Seat Pivot Bracket	N
27	736-0119		L-Wash. 5/16" I.D.*		80	15607		Hex Cent. L-Nut 5/16-18 Thd.	
28	712-0267		Hex Nut 5/16-18 Thd.*		81	712-0158		Belleville Wash. .34" I.D. x .88" O.D.	
29	15825		Grille Mounting Bracket	N	82	736-0242		Seat Spring	
30	13820		Lower Frame Ass'y.		84	732-0431		Hex Wash. Hd. Self-Tap Scr. 5/16-24 x .50" Lg.	
32	710-0726		Hex Thd. Rolling Scr. 5/16-24 x .75" Lg.		85	710-0600		Gas Cap w/Gauge	
33	13828		Running Board—R.H.		86	751-0370		Choke Control Comp. (16 H.P. Only)	
	13827		Running Board—L.H. (Not Shown)		87	746-0394		Seat Bracket—L.H.	N
34	710-0323		Truss Mach. Scr. 5/16-18 x .75" Lg.*		88	15803		Hex Bolt 5/16-18 x .75" Lg.*	
35	712-0267		Hex Nut 5/16-18 Thd.*		89	710-0118		Ignition Key	
36	736-0242		Bell-Wash. .34" I.D.		90	725-0201		Light Switch	
37	15846		Fender Brkt.—R.H.	N	91	725-0634		Ammeter	N
	15847		Fender Brkt.—L.H. (Not Shown)	N	92	725-0925		Hood Spring	N
38	710-0118		Hex Bolt 5/16-18 x .75" Lg.*		93	732-0462		Seat Ass'y.	
39	712-0287		Hex Nut 1/4-20 Thd.*		94	757-0298		Hex Bolt #10-24 x 1.0" Lg.	
40	736-0329		L-Wash. 1/4" I.D.*		95	710-0749		Hex Top L-Nut #10-24	
41	738-0435		Running Board Rod		96	712-0102		Rubber Bumper 3/8" Sq. x 2 1/2" Lg.	
42	751-0173		Fuel Line 60" Lg.		97	735-3005		Speed Nut #10-24	
43	726-0183		Hose Clamp 3/8"		98	712-0121		Dash Support Brkt.—L.H.	N
44	751-0188		90° Nipple		99	15829			
45	735-0149		Bushing (Fuel Tank)						
46	738-0482		Hitch Rod						
47	714-0147		Internal Cotter Pin						
48	13813		Hitch Plate						
49	726-0156		Speed Nut						

# Models 720 thru 737



For parts on bottom of this page, refer to page 26.



# Models 720 thru 737

## PARTS LIST FOR MODELS 720 THRU 737 LAWN TRACTORS

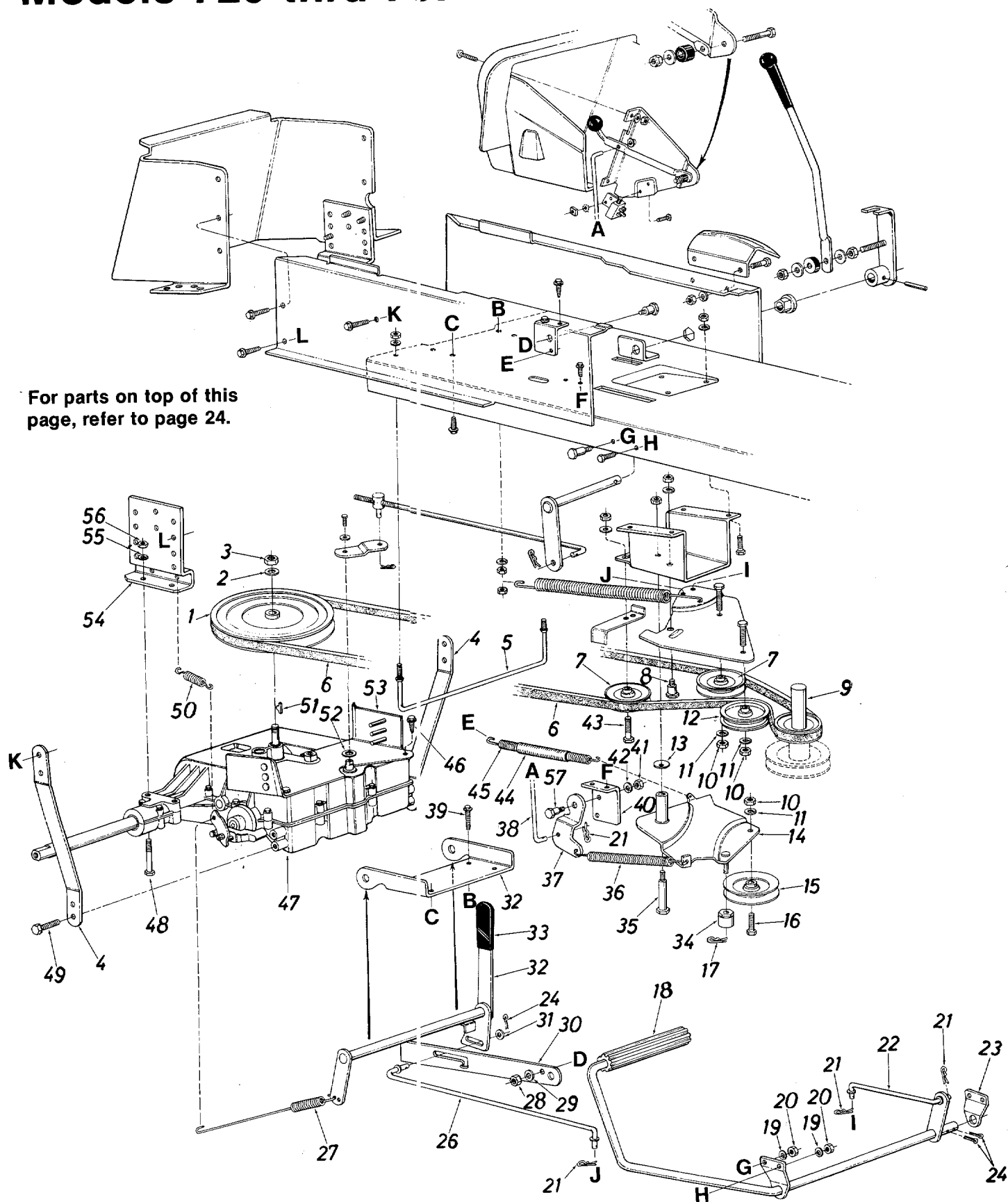
REF. NO.	PART NO.	COLOR CODE	DESCRIPTION	NEW PART	REF. NO.	PART NO.	COLOR CODE	DESCRIPTION	NEW PART
1	13813		Hitch Plate		39	714-0145		Hairpin Cotter 3/8"	
2	14067		Transaxle Support Bracket		40	14192		Shifter Bracket	
3	13847		Side Panel Upper Frame L.H.		41	736-0270		Belleville Wash. .25" I.D. x .375" O.D.	
4	710-0286		Truss. Mach. Scr. 1/4-20 x .50" Lg.*		42	710-0513		Hex Bolt 1/4-28 x .62" Lg. (Special)	
6	720-0165		Ball Knob (Blade Clutch)		43	711-0198		Pivot Bushing	
8	712-0271		Hex Sems Nut 1/4-20 Thd.*		44	14034		Speed Control Shaft Ass'y.	
9	726-0106		Push Cap 1/4" Rod		45	736-0300		FI-Wash. .385" I.D. x .87" O.D. x .060 Thk.	
10	13950		Deck Clutch Control Brkt.		46	712-0214		Hex Cent. L-Nut 3/8-24 Thd.	
11	712-0287		Hex Nut 1/4-20 Thd.*		47	712-0375		Hex Cent. L-Nut 3/8-16 Thd.	
12	736-0173		FI-Wash. .281" I.D. x .734" O.D. x .063 Thk.		48	710-0201		Hex Bolt 3/8-16 x .62" Lg.*	
13	735-0126		Rubber Wash. .330" I.D. x .87" O.D. x .32 Thk.		49	738-0234		Shoulder Bolt .500" Dia. x .345" Lg. (3/8-16)	
14	747-0157		Blade Clutch Lever		50	710-0599		Hex Thd. Rolling Scr. 1/4-20 x .50" Lg.	
15	720-0143		Grip		51	13833		Parking Brake Cam Mtg. Brkt.	
16	747-0317		Shift Lever		52	710-0599		Hex Thd. Rolling Scr. 1/4-20 x .50" Lg.	
17	14197		Shift Bracket		53	736-0329		L-Wash. 1/4" I.D.*	
18	710-0752		Hex Bolt 5/16-18 x .62" Lg.*		54	712-0287		Hex Nut 1/4-20 Thd.*	
19	712-0158		Hex Cent. L-Nut 5/16-18 Thd.		55	710-0773		Hex Wash. Hd. TT-Tap Scr. 3/8-16 x .5" Lg.	
20	736-0159		FI-Wash. .344" I.D. x .875" O.D. x .063 Thk.		56	13848		Side Panel Upper Frame— R.H.	
21	735-0126		Rubber Wash. .330" I.D. x .87" O.D. x .32 Thk.		57	710-0600		Hex Thd. Rolling Scr. 5/16-24 x .50" Lg.	
22	712-0267		Hex Nut 5/16-18 Thd.*		58	710-0599		Hex Thd. Rolling Scr. 1/4-20 x .50" Lg.	
23	14195		Handle Mount Brkt. Ass'y. (Shift Lever)		59	738-0155		Shoulder Bolt .435" Dia. x .160 (5/16-18)	
24	715-0114		Spring Pin Spiral 1/4" Dia. x 1.5" Lg.		60	712-0267		Hex Nut 5/16-18 Thd.*	
25	741-0225		Plastic Hex Bearing .625" I.D.		61	736-0119		L-Wash. 5/16" I.D.*	
26	712-0267		Hex Nut 5/16-18 Thd.*		62	710-0473		Truss Mach. Scr. #10-24 x .50" Lg.*	
27	736-0119		L-Wash. 5/16" I.D.*		63	725-0465		Safety Switch	
28	14035		Speed Control Shaft Brkt.		64	736-0147		Ext. L-Wash. #10 Scr.*	
29	14063		Transaxle Clutch Support Brkt.		65	712-0121		Hex Nut #10-24 Thd.*	
30	710-0378		Hex Bolt 5/16-18 x 2.50" Lg.*		66	747-0307		Deck Control Rod	
31	710-0342		Hex Bolt 3/8-16 x 1.25" Lg.*		67	710-0227		Hex Wash. Hd. Scr. #8 x .50" Lg.	
32	14064		Idler Bracket Ass'y.		68	726-0222		Insulator Nut Plate	
33	13819		Belt Guard		69	725-0758		Spring Switch	
34	732-0307		Extension Spring .995" O.D. x 11.0" Lg.		70	710-0726		Hex Wash. Hd. AB-Tap Scr. 5/16 x .75" Lg.	
35	712-0267		Hex Nut 5/16-18 Thd.*						
36	710-0106		Hex Bolt 1/4-20 x 1.25" Lg.*						
37	736-0119		L-Wash. 5/16" I.D.*						
38	747-0341		Shift Link						

\*For faster service obtain standard nuts, bolts and washers locally. If these items cannot be obtained locally, order by part number and size as shown on parts list.

(462—Red Flake)

When ordering parts if color is important, use the appropriate color code listed above. (e.g. 12369—462—Red Flake.)

# Models 720 thru 737

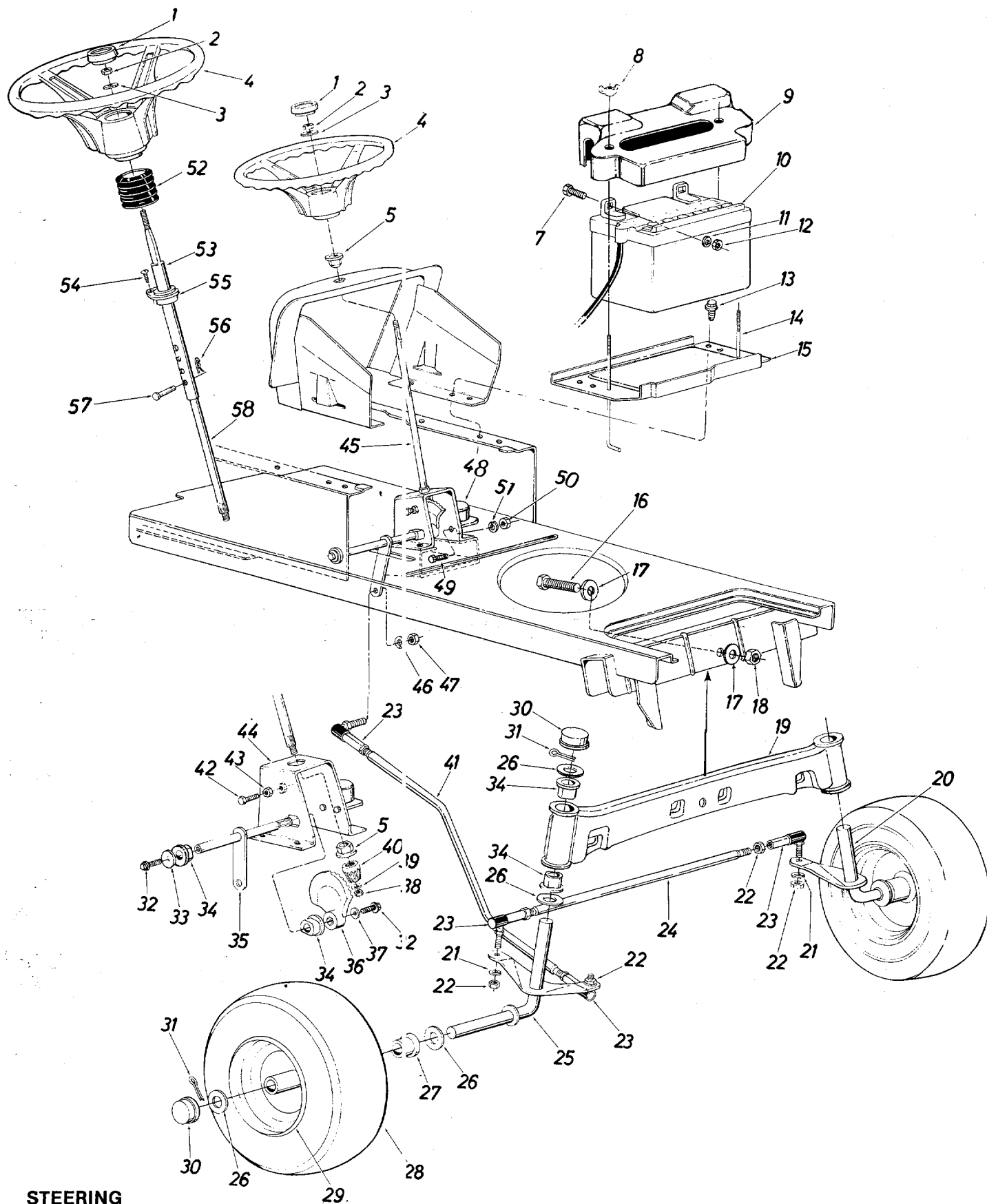


# Models 720 thru 737

## PARTS LIST FOR MODELS 720 THRU 737 LAWN TRACTORS

REF. NO.	PART NO.	COLOR CODE	DESCRIPTION	NEW PART	REF. NO.	PART NO.	COLOR CODE	DESCRIPTION	NEW PART
1	756-0341		8" "V"-Pulley (Transaxle)		32	14073		Hand Brake Lever Ass'y.	
2	736-0921		L-Wash. 1/2" I.D.*		33	720-0189		Grip—Flat Bar 1 1/4" Wide	
3	712-0922		Hex Nut 1/2-20 Thd.*		34	748-0278		Spacer	
4	14066		Transaxle Brace		35	738-0129		Shoulder Bolt .496" Dia. x	
5	747-0322		Belt Guard					2.00" Lg. (3/8-16)	
6	754-0248		"V"-Belt 1/2" x 89" Lg.		36	732-0384		Extension Spring .620" O.D.	
			(Kevlar)					x 6.12" Lg.	
7	756-0116		"V"-Belt Idler Pulley .38"		37	13887		Deck Control Brkt.	
			I.D. x 3-1/16" O.D.		38	747-0307		Deck Control Rod	
8	738-0155		Shoulder Bolt .435" Dia. x		39	710-0442		Hex Bolt 5/16-18 x 1.50" Lg.*	
			.160 (5/16-18)		40	13833		Parking Brake Cam Mtg.	
9	756-0342		Two Step Engine Pulley					Brkt.	
			3.10" & 5.56" Dia.		41	712-0267		Hex Nut 5/16-18 Thd.*	
10	712-0798		Hex Nut 3/8-16 Thd.*		42	736-0119		L-Wash. 5/16" I.D.*	
11	736-0169		L-Wash. 3/8" I.D.*		43	710-0459		Hex Bolt 3/8-24 x 1.50" Lg.	
12	756-0225		Flat Idler Pulley 2.75" O.D.					(Grade 5)	
13	736-0105		Belleville Wash. .400" I.D.		44	731-0483		Convolute Conduit .50" I.D.	
			x .88" O.D. x .063					x 4.0" Lg.	
14	14076		Idler Bracket Ass'y.		45	732-0308		Ext. Spring .50" O.D. x 6.37"	
15	756-0293		4" "V"-Idler Pulley					Lg.	
16	710-0342		Hex Bolt 3/8-16 x 1.25" Lg.*		46	710-0726		Hex Wash. Hd. AB Tap Scr.	
17	714-0104		Hairpin Cotter 5/16" Dia.					5/16-24 x .75" Lg.	
18	735-0196		Foot Pad		47	—		Transaxle (See Breakdown	
19	736-0169		L-Wash. 3/8" I.D.*					on Page 32)	
20	712-0798		Hex Nut 3/8-16 Thd.*		48	710-0378		Hex Bolt 5/16-18 x 2.50"	
21	714-0145		Hairpin Cotter 3/8" Dia.					Lg.*	
22	747-0318		Brake Clutch Rod (4.60" Lg.)		49	710-0726		Hex Wash. Hd. AB Tap Scr.	
23	13859		Clutch Rod Bearing Brkt.					5/16-24 x .75" Lg.	
24	714-0474		Cotter Pin 1/8" Dia. x 1.00"		50	732-0433		Extension Spring .50" O.D.	
			Lg.*					x 2.75" Lg.	
25	14040		Clutch Brake Pedal Ass'y.		51	714-0129		Hi-Pro Key 3/32" x 5/8" Dia.	
26	747-0319		Brake Cam Rod (13.60" Lg.)		52	717-0234		Special Wash. 1.00" O.D.	
27	732-0381		Extension Spring .59" O.D. x					(Hdn.)	
			.93" Lg.		53	14193		Transaxle Belt Keeper Ass'y.	
28	712-0267		Hex Nut 5/16-18 Thd.*		54	14067		Transaxle Support Bracket	
29	736-0119		L-Wash. 5/16" I.D.*		55	736-0119		L-Wash. 5/16" I.D.*	
30	13832		Parking Brake Cam		56	712-0267		Hex Nut 5/16-18 Thd.*	
31	736-0101		Fl-Wash. .406" I.D. x 1.00"		57	738-0155		Shoulder Bolt .437" Dia. x	
			O.D. x .030 Thk.					.162" Lg. (5/16-18)	

# Models 720 thru 737



STEERING

# Models 720 thru 737

## PARTS LIST FOR MODELS 720 thru 737 LAWN TRACTORS

REF. NO.	PART NO.	COLOR CODE	DESCRIPTION	NEW PART	REF. NO.	PART NO.	COLOR CODE	DESCRIPTION	NEW PART
1	731-0220		Steering Wheel Cap		32	710-0180		Hex Scr. 3/8-24 x .75" Lg. Grade 5	
2	712-0158		Hex Cent. L-Nut 5/16-18 Thd.						
3	736-0242		Bell-Wash. 5/16" I.D. x .87" O.D. x .060		33	736-0133		Fl-Wash. 3/8 I.D. x 1.25 O.D. x .090	
4	731-0356		Steering Wheel		34	741-0199		Flange Double "D" Brg. .753 I.D.	
5	741-0225		Plastic Hex Bearing 5/8" I.D.†		35	12749		Steering Arm Shaft Ass'y.	
7	710-0258		Hex Scr. 1/4-20 x .62" Lg.		36	748-0236		Side Gear—Steering	
8	712-0113		Wing Nut Plastic 1/4-20 Thd.		37	736-0105		Bell-Wash. 3/8" I.D.	
9	731-0707		Battery Cover		38	712-0237		Hex Cent. L-Nut 5/16-24 Thd.	
10	725-0453		12-V Battery		39	736-0264		Fl-Wash. 5/16" I.D. x .62 O.D. x .059	
11	736-0329		L-Wash. 1/4" Scr.*						
12	712-0287		Hex Nut 1/4-20 Thd.*	40	748-0237			Pinion Gear—Steering	
13	710-0599		Hex Thd. Rolling Scr. 1/4-20 x .50" Lg.	41	747-0302			Drag Link	
				42	710-0670			Hex Nylon Scr. 3/8-16 x 1.25" Lg.	
14	711-0222		Battery Hold Down Rod						
15	13379		Battery Plate	43	712-0798			Hex Nut 3/8-16 Thd.*	
16	710-0533		Hex Scr. 5/8-18 x 2.50" Lg.*	44	12850			Steering Gear Sup. Ass'y.	
17	736-0282		Flat Wash. .66" I.D. x 2.25" O.D. x .17	45	738-0317			Steering Shaft†	
				46	736-0169			L-Wash. 3/8" Scr.*	
18	712-0923		Hex Cent. L-Nut 5/8-18 Thd.	47	712-0241			Hex Nut 3/8-24 Thd.*	
19	13865		Front Pivot Bar Ass'y.	48	725-0771			Solenoid	
20	13839		Front Axle Ass'y.—L.H.	49	710-0258			Hex Scr. 1/4-20 x .62" Lg.	
21	736-0169		L-Wash. 3/8" Scr.*	50	712-0287			Hex Nut 1/4-20 Thd.*	
22	712-0241		Hex Nut 3/8-24 Thd.*	51	736-0329			L-Wash. 1/4" Scr.*	
23	723-0156		Ball Joint Ass'y.	52	731-0559			Steering Bellow††	
24	747-0301		Tie Rod	53	14775			Upper Steering Shaft††	
25	13838		Front Axle Ass'y.—R.H.	54	710-0837			Oval Hd. Cr.-Sunk Scr. #10 x 5/8" Lg.††	
26	736-0316		Fl-Wash. .780 I.D. x 1.59 O.D.					Fl-Bearing .89" I.D. x 1.36" O.D.††	
27	**		Flange Bearing	55	741-0356			Hairpin Cotter††	
28	**		Front Wheel Ass'y. Comp.					Clevis Pin††	
29	**		Front Wheel Rim Only	56	714-0147			Lower Steering Shaft††	
30	731-0484		Dust Cover	57	711-0684				
31	714-0121		Cotter Pin 5/32" Dia. x 1.00" Lg.*	58	738-0588				

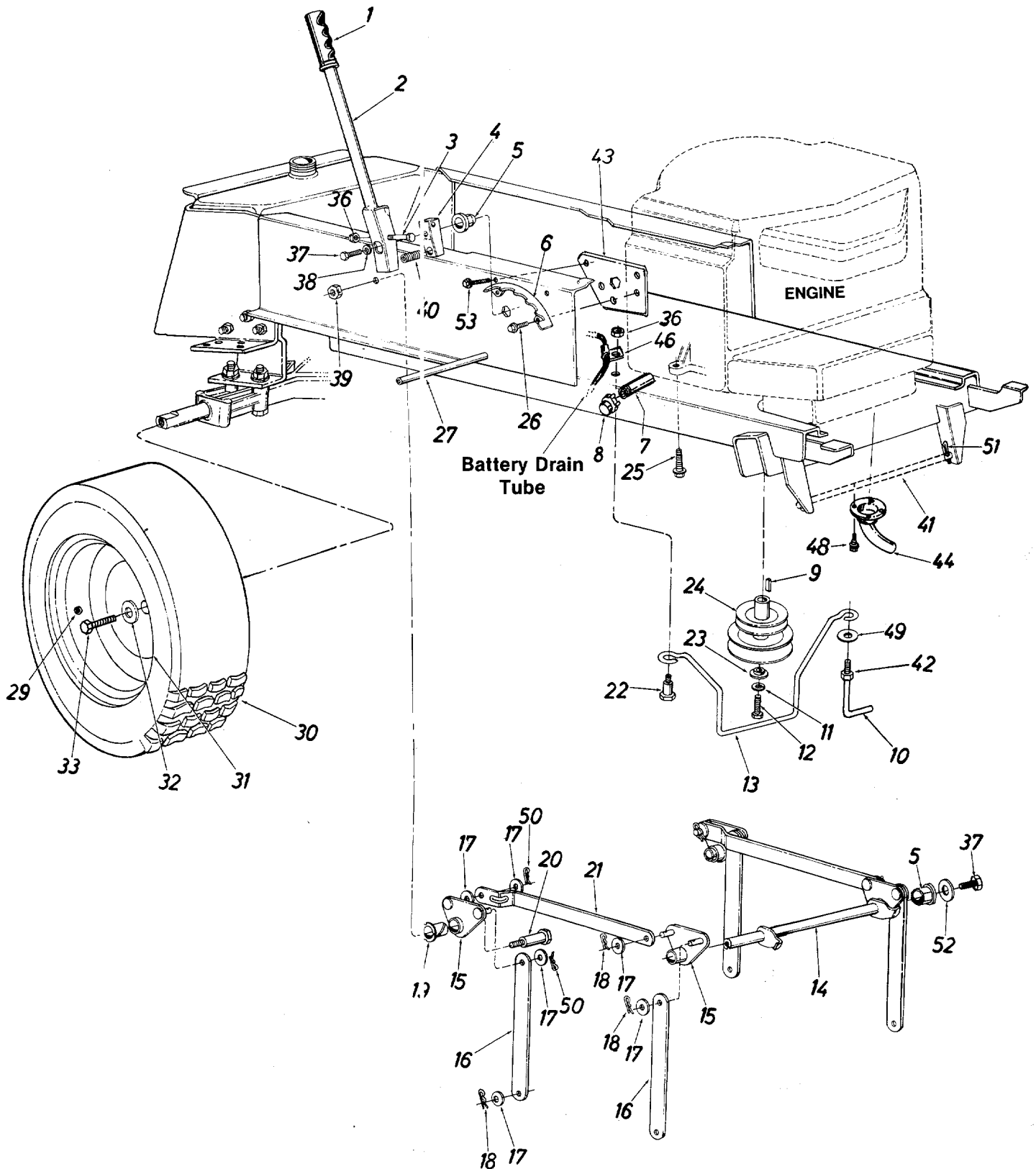
†Models 720, 722, 724, 726, 730, 732, 734 and 736 only.

††Models 721, 723, 725, 727, 731, 733, 735 and 737 only.

### \*\*FRONT WHEEL CHART

Description	16 x 6.50—Part No.	15 x 6.00—Part No.
Wheel Assembly Comp.	734-1006	734-0960
Tire Only	734-0526	734-0498
Rim Only	734-0787	734-0961
Bearing	741-0312	741-0382
Air Valve	734-0255	734-0255
Grease Fitting	737-0146	737-0146

# Models 720 thru 737



# Models 720 thru 737

## PARTS LIST FOR MODELS 720 thru 737 LAWN TRACTORS

REF. NO.	PART NO.	COLOR CODE	DESCRIPTION	NEW PART	REF. NO.	PART NO.	COLOR CODE	DESCRIPTION	NEW PART
1	720-0157		Grip		27	738-0435		Running Board Rod	
2	14233		Lift Handle Ass'y.		29	734-0255		Air Valve	
3	710-0442		Hex Scr. 5/16-18 x 1.50" Lg.*		30	**		Rear Wheel Ass'y. Comp.	
4	748-0274		Lift Shaft Drive		31	**		Rear Wheel Rim Only	
5	741-0225		Plastic Hex Brg. 5/8" I.D.		32	736-0242		Bell-Washer .345" I.D. x .88" O.D.	
6	14231		Index Brkt. Deck Lift						
7	737-0164		Pipe Nipple 3/8-18 Npt.		33	710-0627		Hex Bolt 5/16-24 x .75" Lg.	
8	737-0143		Pipe Cap 3/8-18 Npt.		36	712-0158		Hex Cent. L-Nut 5/16-18 Thd.	
9	714-0118		Sq. Key 1/4" x 1.50" Lg.		37	710-0237		Hex Scr. 5/16-24 x .62" Lg.*	
					38	736-0119		L-Wash. 5/16" Scr.*	
10	747-0216		Belt Guard Lock Pin		39	712-0266		Hex Center L-Jam Nut 3/8-16 Thd.	
11	736-0171		L-Wash. 7/16" Scr.*						
12	710-0757		Hex Scr. 7/16-20 x 1.50" Lg.		40	732-0369		Compression Spring	
13	747-0299		Belt Guard		41	738-0392		Deck Connecting Rod	
14	13889		Lift Shaft Ass'y.		42	712-0123		Hex Nut 5/16-24 Thd.*	
15	13895		Lift Pivot Brkt. Ass'y.		43	14170		Index Brkt. Reinforcement Plate	
16	13791		Link (Deck)						
17	736-0192		Fl-Wash. 1/2" I.D. x 1.00" O.D. x .090		44	751-0275		Exhaust Pipe (16 H.P. Only)	
					46	726-0175		Mounting Clamp (16 H.P. Only)	
18	714-0101		Hairpin Cotter						
19	741-0295		Nyliner 5/8" I.D. x .88" Lg.		47	731-0556		Hub Cap (Not Shown)	
20	738-0445		Shld. Scr. 5/8" Dia. x .96" Lg. 3/8-16		48	710-0224		Hex Wash. Hd. AB-Tap Scr. #10 x .50" Lg.	
21	13790		Connecting Link		49	736-0242		Bell-Wash. .39" I.D.	
22	738-0296		Shld. Scr. .437 Dia. x .268 Lg. 5/16-18		50	714-0111		Cotter Pin .09 Dia. x 1.0" Lg.	
					51	714-0149		Int. Cotter Pin	
23	736-0322		Flat Wash. .44" I.D. x 1.25" O.D. x .17		52	736-0231		Flat Wash. .34" I.D. x 1.12" O.D. x .125	
24	756-0342		Two-Step Engine Pulley		53	710-0726		Hex Wash. Hd. AB-Tap Scr. 5/16 x .62" Lg.	
25	710-0502		Hex Wash. Hd. Scr. 3/8-16 x 1.25" Lg.						
26	710-0600		Hex Thd. Rolling Scr. 5/16-24 x .50" Lg.						

The engine is not under warranty by the mower manufacturer. If repairs or service is needed on the engine, please contact your nearest authorized engine service outlet. Check the "Yellow Pages" of your telephone book under "Engines—Gasoline."



### \*\*REAR WHEEL CHART

Description	20 x 10.0—Part No.	22 x 7.50—Part No.
Wheel Assembly Comp.	734-1064	734-1049
Tire Only	734-1065	734-0967
Rim Only	734-0764	734-1047

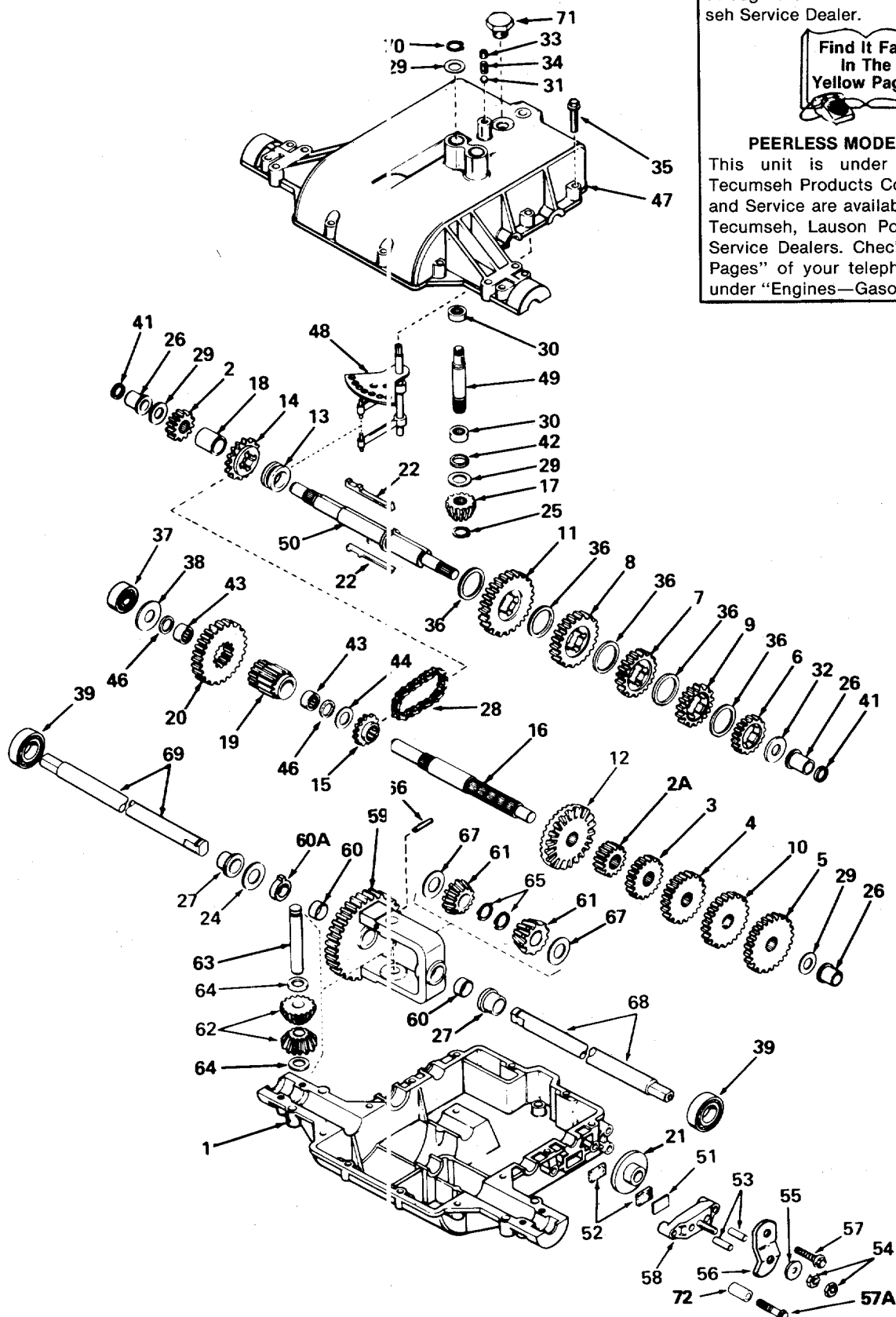
# Models 720 thru 737

NOTE: This unit is not under warranty by the mower manufacturer. All Part Orders and Service must be handled through the local Authorized Tecumseh Service Dealer.



## PEERLESS MODEL 801-008

This unit is under warranty by Tecumseh Products Company. Parts and Service are available through all Tecumseh, Lauson Power Products Service Dealers. Check the "Yellow Pages" of your telephone directory under "Engines—Gasoline."



TRANSAXLE MODEL 801-008



# Models 720 thru 737

## PARTS LIST FOR TRANSAXLE MODEL 801-008 (717-0497)

REF. NO.	PART NO.	DESCRIPTION	REF. NO.	PART NO.	DESCRIPTION
1	PE-770071	Case, Transaxle	37	PE-780121	Bearing, Ball
2	PE-778136	Gear, Spur (15 Teeth)	38	PE-780113	Washer, Flat
2A	PE-778145	Gear, Spur (12 Teeth)	39	PE-780119	Bearing, Ball
3	PE-778126A	Gear, Spur (20 Teeth)	41	PE-788051	Ring, Square Cut
4	PE-778127A	Gear, Spur (25 Teeth)	42	PE-788057	Ring, Square Cut
5	PE-778129A	Gear, Spur (30 Teeth)	43	PE-780112	Bearing, Needle
6	PE-778121A	Gear, Spur (20 Teeth)	44	PE-780114	Washer, Flat
7	PE-778123A	Gear, Spur (25 Teeth)	46	PE-788053	Ring, Square Cut
8	PE-778124A	Gear, Spur (30 Teeth)	47	PE-772082	Cover, Transaxle
9	PE-778122A	Gear, Spur (22 Teeth)	48	PE-784290	Rod & Fork Assy., Shift
10	PE-778128A	Gear, Spur (28 Teeth)	49	PE-776140	Shaft, Input
11	PE-778146	Gear, Spur (37 Teeth)	50	PE-776184	Shaft, Brake
12	PE-778137A	Gear, Bevel (42 Teeth)	51	PE-790007	Plate, Brake Pad
13	PE-784266	Collar, Shift	52	PE-790006	Pad, Brake
14	PE-786083	Sprocket (18 Teeth)	53	PE-786026	Pin, Dowel
15	PE-786082	Sprocket (9 Teeth)	54	PE-792075	Locknut, 5/16-24
16	PE-776204	Shaft, Counter	55	PE-792076	Washer, Flat
17	PE-778113A	Bevel Pinion, Input	56	PE-790004	Lever, Brake
18	PE-786074	Spacer	57	PE-792073	Screw, Hex Hd., Thread Forming, 1/4-20 x 1-1/4
19	PE-778138	Pinion, Output	58	PE-790005	Holder, Brake Pad
20	PE-778139	Gear, Output	59	PE-778053A	Gear Assy., Differential (Incl. 2 of No. 60)
21	PE-790003	Disk, Brake	60	PE-780064	Bushing
22	PE-792089A	Key	60A	PE-780120	Bushing
24	PE-780001	Washer	61	PE-778067	Gear, Bevel
25	PE-788040	Ring, Retaining	62	PE-778131	Pinion, Bevel
26	PE-780105	Bushing, Flanged	63	PE-786034	Pin, Drive
27	PE-780118	Bushing, Flanged	64	PE-780065	Washer, Thrust
28	PE-786081	Chain, Roller (No. 41 Chain, 22 Links)	65	PE-792018	Ring, Retaining
29	PE-780072	Washer, Thrust	66	PE-792040	Pin, Roll
30	PE-780122	Bearing, Needle	67	PE-780001	Washer, Thrust
31	PE-792077	Ball, Steel	68	PE-774436	Axle (15-1/4" Long)
32	PE-780109	Washer, Thrust	69	PE-774435	Axle (13-3/8" Long)
33	PE-792078	Screw, Set, 3/8-16 x 3/8	70	PE-792035	Ring, Retaining
34	PE-792079	Spring	71	PE-792074	Plug, Hex Hd., 9/16-18 Thread
35	PE-792073	Screw, Hex Hd., Thread Forming, 1/4-20 x 1-1/4	72	PE-786066	Spacer
36	PE-780108	Washer, Thrust			

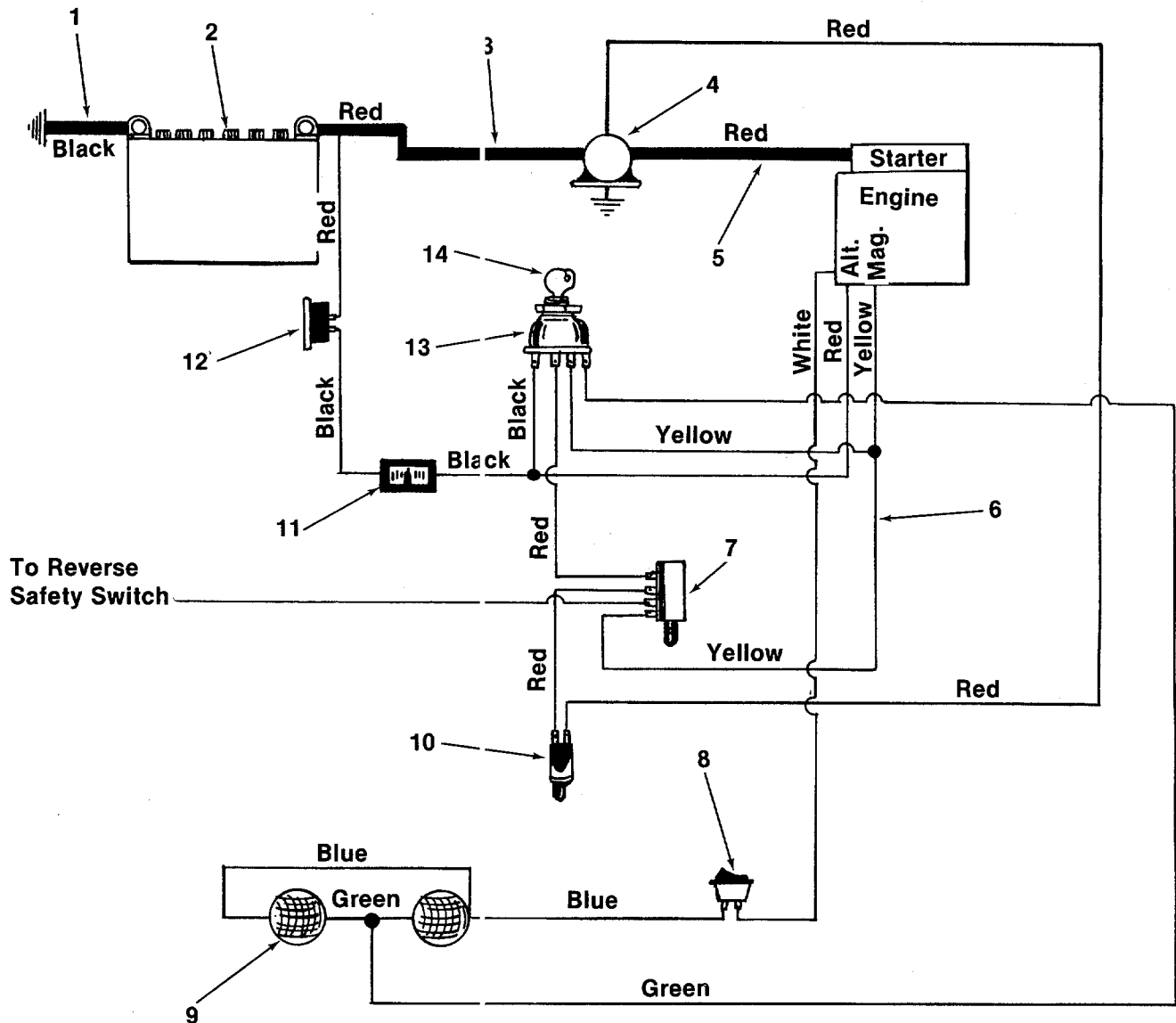
NOTE: This unit is not under warranty by the mower manufacturer. All Part Orders and Service must be handled through the local Authorized Tecumseh Service Dealer.



### PEERLESS MODEL 801-008

This unit is under warranty by Tecumseh Products Company. Parts and Service are available through all Tecumseh, Lauson Power Products Service Dealers. Check the "Yellow Pages" of your telephone directory under "Engines—Gasoline."

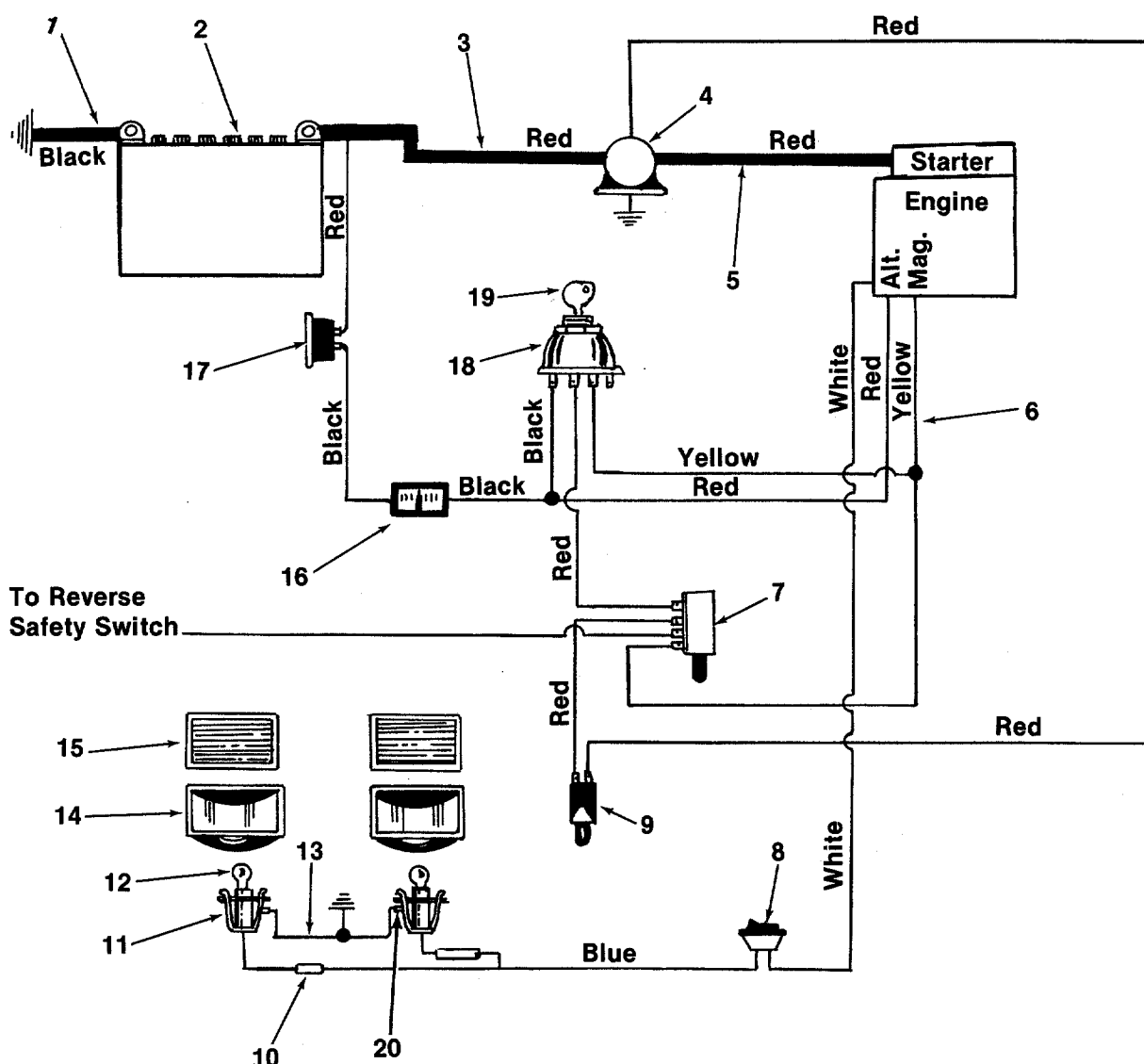
## Models 720, 722, 724, 726, 730, 732, 734 and 736



## PARTS LIST FOR ELECTRICAL SYSTEM MODELS 720, 722, 724, 726, 730, 732, 734 and 736 LAWN TRACTORS

REF. NO.	PART NO.	DESCRIPTION	REF. NO.	PART NO.	DESCRIPTION
1	725-0996	Electric Ground Wire (Black Negative)	6	725-1021	Wire Harness (16 H.P.)
2	725-0453	12V-Battery		725-1020	Wire Harness (11 H.P.)
3	725-0561	Electric Wire (Red Positive) (16 H.P.)	7	725-0465	Safety Switch (P.T.O.)
	725-0564	Electric Wire (Red Positive) (11 H.P.)	8	725-0634	Light Switch
			9	725-0222	Head Lights
4	725-0771	Solenoid	10	725-0268	Safety Switch (Clutch)
5	725-0563	Electric Wire (16 H.P.)	11	725-0925	Ammeter
	725-0564	Electric Wire (11 H.P.)	12	725-0459	Circuit Breaker
			13	725-0267	Ignition Switch
			14	725-0201	Ignition Key

# Models 721, 723, 725, 727, 731, 733, 735 and 737



**PARTS LIST FOR ELECTRICAL SYSTEM  
MODELS 721, 723, 725, 727, 731, 733, 735 and 737  
LAWN TRACTORS**

REF. NO.	PART NO.	DESCRIPTION	REF. NO.	PART NO.	DESCRIPTION
1	725-0996	Electric Wire (Black Negative)	8	725-0634	Light Switch
2	725-0453	12V-Battery	9	725-0268	Safety Switch (Clutch)
3	725-0561	Electric Wire (Red Positive) (16 H.P.)	10	725-0717	Tab Receptacle
	725-0564	Electric Wire (Red Positive) (11 H.P.)	11	725-0964	Socket
4	725-0771	Solenoid	12	725-0963	Lamp
5	725-0563	Electric Wire (16 H.P.)	13	725-0916	Ground Wire
	725-0564	Electric Wire (11 H.P.)	14	731-0705	Head Light Housing
6	725-1027	Wire Harness (16 H.P.)	15	731-0706	Lens
	725-1028	Wire Harness (11 H.P.)	16	725-0925	Ammeter
7	725-0465	Safety Switch (P.T.O.)	17	725-0459	Circuit Breaker
			18	725-0267	Ignition Switch
			19	725-0201	Ignition Key
			20	726-0226	Push on Ground Clip

# PARTS INFORMATION

## POWER EQUIPMENT PARTS AND SERVICE

Parts and service are available through the authorized service firms listed below. All orders should specify the model number of your unit, part numbers, description of parts and the quantity of each part required.

**NOTE:** If any parts are found to be missing or defective upon assembly of this unit, write to advise the factory so that immediate replacement can be made.

<b>ALABAMA</b>	<b>BIRMINGHAM</b>
Auto Electric & Carburetor Co. ....	2625 4th Ave. S. .... 35233
<b>ARKANSAS</b>	<b>NORTH LITTLE ROCK</b>
Sutton's Lawn Mower Shop .....	5301 Roundtop Drive
	Box 368, Rt. 4 ..... 72117
<b>CALIFORNIA</b>	<b>PORTERVILLE</b>
Billious .....	75 North D Street .... 93257
<b>COLORADO</b>	<b>DENVER</b>
Spitzer Industrial Products Co. ....	6601 N.
	Washington St. .... 80229
<b>FLORIDA</b>	<b>JACKSONVILLE</b>
Radco Distributors .....	4909 Victor St.
	Box 5459 ..... 32207
	<b>OPA LOCKA</b>
Small Eng. Dist. ....	2351 N.W. 147th St. .... 33054
<b>GEORGIA</b>	<b>EAST POINT</b>
East Point Cycle & Key .....	2834 Church St. .... 30344
<b>ILLINOIS</b>	<b>LYONS</b>
Keen Edge Co. ....	8615 Ogden Ave. .... 60534
<b>INDIANA</b>	<b>ELKHART</b>
Parts & Sales Inc. ....	2101 Industrial Pkwy. .... 46516
<b>IOWA</b>	<b>DUBUQUE</b>
Power Lawn & Garden Equip. ....	2551 J.F. Kennedy .... 52001
<b>LOUISIANA</b>	<b>NEW ORLEANS</b>
Suhren Engine Co. ....	8330 Earhart Blvd. .... 70118
<b>MARYLAND</b>	<b>TAKOMA PARK</b>
Center Supply Co. ....	6867 New Hampshire
	Ave. .... 20912
<b>MASSACHUSETTS</b>	<b>SPRINGFIELD</b>
Morton B. Collins Co. ....	300 Birnie Ave. .... 01107
<b>MICHIGAN</b>	<b>LANSING</b>
Lorenz Service Co. ....	2500 S. Pennsylvania .... 48910
	<b>MOUNT CLEMENS</b>
Power Equipment Dist. ....	340 Hubbard ..... 48043
<b>MINNESOTA</b>	<b>HOPKINS</b>
Hance Distributing Inc. ....	420 Excelsior Ave. W. .... 55343
<b>MISSISSIPPI</b>	<b>BILOXI</b>
Biloxi Sales & Service, Inc. ....	506 Caillavet St. .... 39533
<b>MISSOURI</b>	<b>KANSAS CITY</b>
Automotive Equip. Service .....	3117 Holmes St. .... 64109
	<b>ST. JOSEPH</b>
Ross-Frazier Supply Co. ....	8th and Monterey .... 64503
	<b>ST. LOUIS</b>
Henzler, Inc. ....	2015 Lemay Ferry Rd. .... 63125
<b>NEW JERSEY</b>	<b>BELLMAWR</b>
Lawnmower Parts Inc. ....	717 Creek Rd. .... 08030
<b>NEW MEXICO</b>	<b>ALBUQUERQUE</b>
Spitzer Eng. & Parts .....	1023 Third Ave. N.W. .... 87103
<b>NEW YORK</b>	<b>CARTHAGE</b>
Gamble Dist., Inc. ....	West End Ave. .... 13619
<b>NORTH CAROLINA</b>	<b>GOLDSBORO</b>
Smith Hardware Co. ....	515 N. George St. .... 27530
	<b>GREENSBORO</b>
Dixie Sales Company .....	335 N. Green ..... 27402

## BRIGGS AND STRATTON, TECUMSEH AND PEERLESS PARTS AND SERVICE

Briggs & Stratton, Tecumseh and Peerless parts and service should be handled by your nearest authorized engine service firm. Check the yellow pages of your telephone directory under listing **Engines—Gasoline**, Briggs & Stratton or Tecumseh Lauson.

<b>OHIO</b>	<b>CARROLL</b>
Stebe's Mid-State Mower Supply .....	Box 366, 71 High St. .... 43112
	<b>CLEVELAND</b>
Bleckrie, Inc. ....	7900 Lorain Ave. .... 44102
	<b>WADSWORTH</b>
National Central .....	687 Seville Rd. .... 44281
	<b>YOUNGSTOWN</b>
Burton Supply Co. ....	1301 Logan Ave.
	Box 929 ..... 44501
<b>OKLAHOMA</b>	<b>MUSKOGEE</b>
Victory Motors, Inc. ....	605 S. Cherokee .... 74401
<b>OREGON</b>	<b>PORTLAND</b>
Kenton Supply Co. ....	8216 N. Denver Ave. .... 97217
<b>PENNSYLVANIA</b>	<b>HARRISBURG</b>
EECO Inc. ....	4021 N. 6th St. .... 17110
	<b>PHILADELPHIA</b>
Thompson Rubber Co. ....	5222-24 N. Fifth St. .... 19120
	<b>PITTSBURGH</b>
Bluemont Co. ....	11125 Frankstown Rd. .... 15235
	<b>PUNXSUTAWNEY</b>
Frank Roberts & Sons .....	R.D. 2 ..... 15767
	<b>SCRANTON</b>
Scranton Auto Ignition Co. ....	1133-35 Wyoming Ave. .... 18509
<b>TENNESSEE</b>	<b>KNOXVILLE</b>
Master Repair Service .....	2000 Western Ave. .... 37921
	<b>MEMPHIS</b>
American Sales & Service, Inc. ....	3035-43 Bellbrook .... 38116
<b>TEXAS</b>	<b>DALLAS</b>
Marr Brothers, Inc. ....	423 E. Jefferson .... 75207
	<b>FORT WORTH</b>
Woodson Sales Corp. ....	1702 N. Sylvania .... 76111
	<b>HOUSTON</b>
Bullard Supply Co. ....	2409 Commerce St. .... 77003
	<b>SAN ANTONIO</b>
Engine House Inc. ....	8610 Botts Lane
	P.O. Box 17867 ..... 78217
<b>UTAH</b>	<b>BOUNTIFUL</b>
Powered Products .....	485N 500W. .... 84010
	<b>SALT LAKE CITY</b>
A-1 Engine & Mower Co. ....	439 E. 900 So. .... 84111
<b>VIRGINIA</b>	<b>ASHLAND</b>
RBI Corp. ....	101 Cedar Ridge Dr. .... 23005
<b>WASHINGTON</b>	<b>SEATTLE</b>
Bailey's Inc. ....	1414 14th Ave. .... 98122
<b>WISCONSIN</b>	<b>APPLETON</b>
Automotive Supply Co. ....	123 S. Linwood Ave.
	P.O. Box 798 ..... 54911
	<b>CHILTON</b>
Horst Dist. ....	444 N. Madison ..... 53014

## WARRANTY PARTS AND SERVICE POLICY

(1183)

The purpose of warranty is to protect the customer from defects in workmanship and materials, defects which are NOT detected at the time of manufacture. It does not provide for the unlimited and unrestricted replacement of parts. Use and maintenance are the responsibility of the customer. The manufacturer cannot assume responsibility for conditions over which it has no control. Simply put, if it's the manufacturer's fault, it's the manufacturer's responsibility; if it's the customer's fault, it's the customer's responsibility.

### CLAIMS AGAINST THE MANUFACTURER'S WARRANTY INCLUDES:

1. Replacement of Missing Parts on new equipment.
2. Replacement of Defective Parts within the warranty period.
3. Repair of Defects within the warranty period.

All claims MUST be substantiated with the following information:

1. Model Number of unit involved.
2. Date unit was purchased or first put into service.
3. Date of failure.
4. Nature of failure.