

Operating/Service Instructions

RIDING MOWER

IMPORTANT

SAFE OPERATION PRACTICES - RIDING MOWERS

Model Nos.

132-425 &
132-435

1. Know the controls and how to stop quickly—
READ THE OWNER'S MANUAL.
2. Do not allow children to operate vehicle. Do not allow adults to operate it without proper instruction.
3. Do not carry passengers. **Keep children and pets a safe distance away.**
4. Clear work area of objects which might be picked up and thrown.
5. Disengage all attachment clutches and shift into neutral before attempting to start engine (motor).
6. Disengage power to attachments and stop engine (motor) before leaving operator position.
7. Disengage power to attachment(s) and stop engine (motor) before making any repairs or adjustments.
8. Disengage power to attachments when transporting or not in use.
9. Take all possible precautions when leaving vehicle unattended; such as disengaging power-take-off, lowering attachments, shifting into neutral, setting parking brake, stopping engine and removing key.
10. Do not stop or start suddenly when going uphill or downhill. Mow up and down the face of steep slopes; never across the face.
11. Reduce speed on slopes and in sharp turns to prevent tipping or loss of control. Exercise extreme caution when changing direction on slopes.
12. Stay alert for holes in terrain and other hidden hazards.
13. Use care when pulling loads or using heavy equipment.
 - A. Use only approved drawbar hitch points.
 - B. Limit loads to those you can safely control.
 - C. Do not turn sharply. Use care when backing.
 - D. Use counterweight(s) or wheel weights when suggested in owner's manual.
14. Watch out for traffic when crossing or near roadways.
15. When using any attachments never direct discharge of material toward bystanders nor allow anyone near vehicle while in operation.
16. Handle gasoline with care—it is highly flammable.
 - A. Use approved gasoline container.
 - B. Never remove cap or add gasoline to a running or hot engine or fill fuel tank indoors. Wipe up spilled gasoline.
 - C. Open doors if engine is run in garage—exhaust fumes are dangerous. Do not run engine (motor) indoors.
17. Keep vehicle and attachments in good operating condition and keep safety devices in place. Use guards as instructed in owner's manual.
18. Keep all nuts, bolts, and screws tight to be sure equipment is in safe working condition.
19. Never store equipment with gasoline in the tank inside a building where fumes may reach an open flame or spark.
20. Allow engine to cool before storing in any enclosure.
21. To reduce fire hazard keep engine free of grass, leaves or excessive grease.
22. Vehicle and attachments should be stopped and inspected for damage after striking a foreign object and the damage should be repaired before restarting and operating the equipment.
23. Do not change engine governor settings or over-speed engine.
24. When using vehicle with mower:
 - (1) Mow only in daylight or in good artificial light.
 - (2) Never make a cutting height adjustment while engine (motor) is running if operator must dismount to do so.
 - (3) Shut engine (motor) off when removing grass catcher and/or unclogging chute.
 - (4) Check blade mounting bolts for proper tightness at frequent intervals.
25. Check grass catcher bags frequently for wear or deterioration. Replace with new bags for safety protection.

ASSEMBLY

GRASS CATCHER Model No. 192-110 is available as optional equipment for the mowers shown in this manual.

WARNING

1. The mower should not be operated without the entire grass catcher or chute deflector in place.

NOTE

Under normal usage bag material is subject to wear, and should be checked periodically. Be sure any replacement bag complies with the mower manufacturer's recommendations.

For replacement bags, use only factory authorized replacement bag No. 764-121.

IMPORTANT: After striking a foreign object, stop the engine (motor). Remove wire from spark plug, thoroughly inspect the mower for any damage, and repair the damage before restarting and operating the mower.

NOTE

Reference to right-hand or left-hand side of machine is from the driver's seat facing forward.

Your mower is shipped assembled except for the steering wheel, seat and battery on the electric start model.

STEERING WHEEL ASSEMBLY See figure 1.

- Step 1. Line up the hole in the steering column and the hole in the tubing and drive in the small roll pin with a hammer.

NOTE

It may be necessary to use a drift to line up the holes.

- Step 2. Place the end caps on the spacer.
- Step 3. Slide the spacer over the tubing until it lays flush against the steering box.
- Step 4. Align the hole in the steering wheel and tubing and drive in the large roll pin with a hammer.
- Step 5. Place the cap on the steering wheel.

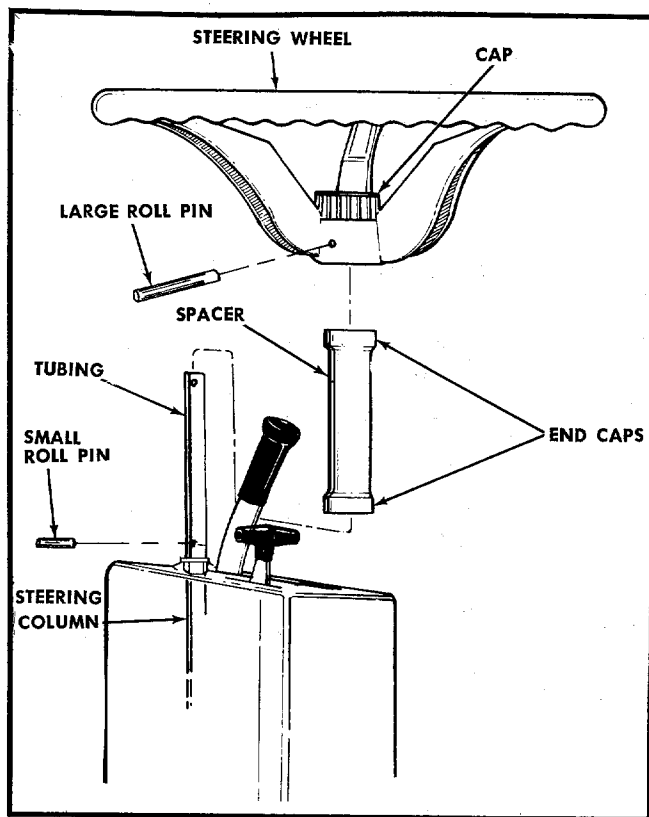


FIGURE 1. STEERING WHEEL ASSEMBLY

SEAT ASSEMBLY See figures 2 and 3.

- Step 1. Hook the large carriage bolt into the bottom of the seat as shown in figure 2.

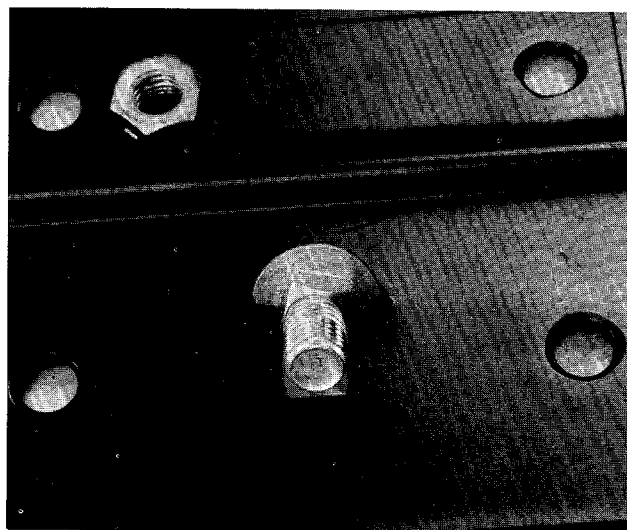


FIGURE 2. ATTACHING SEAT BOLT

Step 3. Tighten the large nut to the carriage bolt on the seat.

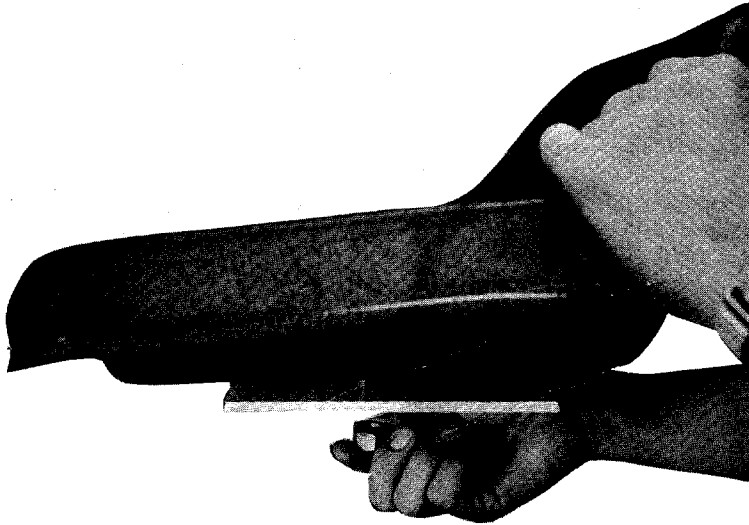


FIGURE 3. SEAT ASSEMBLY

ACTIVATING THE BATTERY (Electric Start Models Only)



Since battery acid is corrosive to metals, do not pour into any sink or drain. Rinse empty Electrolyte containers and mutilate before discarding. If acid is accidentally spilled on battery during filling or charging, or on bench or clothing, etc., flush off with clear water and neutralize with soda or ammonia solution.

- Step 1. Place the battery to be filled on a bench. Never activate the battery in the mower.
- Step 2. Remove the vent plugs.
- Step 3. Place the acid pack in the upright position, pull the tab back to the edge of the carton, pull out hose, snip off end.
- Step 4. Fill each cell until the electrolyte level rises to the split ring at the bottom of the vent well.

CAUTION

Do not over-fill.

- Step 5. After filling the cells, wait five to ten minutes and add additional electrolyte if necessary to bring it up to the proper level.
- Step 6. Replace the vent caps.
- Step 7. Using the battery charger packed with your mower, charge the new battery for 2 hours before installing it in the riding mower.

NOTE

If you want to use a larger rated charger, use this guide.

25-30 amps	10 to 15 minutes
4-6 amps	30 minutes

INSTALLING THE BATTERY (Electric Start Models Only)

See figure 4.

- Step 1. Tip the seat forward to expose the battery box.
- Step 2. Remove the two screws "A".
- Step 3. Remove screw "B" and lift out the battery hold down.
- Step 4. Place the battery in the battery box with the positive terminal (+) to the front of the rider.
- Step 5. Attach the large red wire from the solenoid and the small red wire to the positive (+) terminal of the battery with a 1/4" screw, washer and nut.
- Step 6. Attach the large red wire from the ground (-) to the negative (-) terminal of the battery with a 1/4" screw, washer and nut.
- Step 7. Replace the battery hold down with screws "A" and "B".

TIRE PRESSURE

The tires are over-inflated for shipping. Reduce the tire pressure from 7 to 10 psi front and rear.

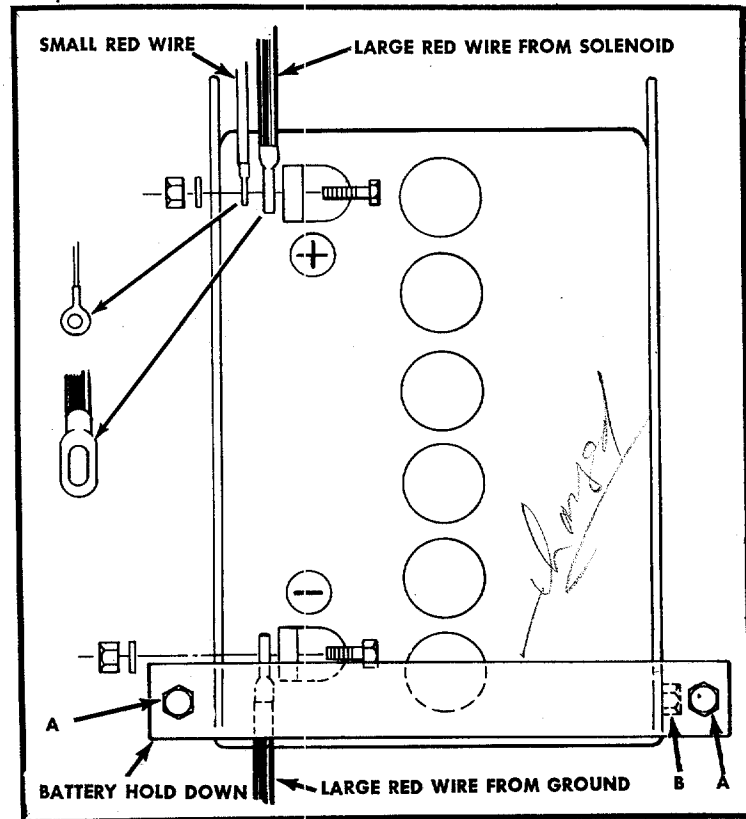


FIGURE 4. INSTALLING THE BATTERY
BATTERY CHARGER

- 1. Your battery may be charged in your rider without removing it or without disturbing the cable connectors at the battery terminals.
- 2. Be sure the switch is in the 12 Volt position.
- 3. Connect battery clips to battery terminals. Clip with (+) mark connects to positive terminal of the battery. Clip with no marking connects to negative terminal of battery. (Red clips are + and black clips are -) Be sure that battery terminals are clean where charger clips are to be connected. Move clips back and forth several times to be sure a tight connection is made.

4. If sparking occurs at battery clips when connecting them to battery terminals the clips should be reversed on the battery terminals.

5. Make sure the voltage of the battery is the same as that of the charger, as mentioned before. Connect AC plug to an alternating current outlet of the same voltage and frequency as shown on the name plate of the charger. (To prevent short circuiting of the battery charger, be sure to connect clips to battery terminals before plugging into the AC outlet.)

6. Your battery charger is equipped with an automatic circuit breaker which protects the charger against short circuits and overloads which cause the circuit breaker to trip open when they occur. After a short cooling off period the circuit breaker will "reset" automatically and allow the charger to operate normally. If the circuit-breaker trips open, make sure battery connections are correct.

7. If the charger continues to trip and you have checked your connections to see that they are correct, the probable cause is in the battery, which may have been allowed to discharge below its normal discharge condition or it may have one or more shorted cells. If this condition exists it will draw too much current and cause the circuit breaker to trip on and off. This will continue until the battery has recovered sufficiently to allow a normal charging current.

8. The charging rate depends upon the AC supply voltage and the internal condition of the battery. Under certain of these conditions the charger may not deliver its maximum charging rate to the battery, but this should not be taken as an indication that the charger is inefficient.

9. The average time required to charge a battery is 8-10 hours for a completely discharged battery.

CONTROLS See figure 5.

This manual should be read in its entirety before you operate your Riding Mower. The more you know and understand about the machine and its operation, the better job it will do for you. While reading the manual, compare the illustrations with your mower to familiarize yourself with the locations of various controls, lubrication points, attachments and adjustment features.

Study the operating instructions and safety precautions thoroughly to insure proper functioning of your mower and to prevent injury to yourself and others. Be sure to save this manual for future reference.

THROTTLE CONTROL

The throttle control is used to regulate the engine speed and to activate the choke on the engine. To get the maximum efficiency on cutting, the throttle should be in the FAST position when operating the mower. Pushing the throttle all the way forward, past FAST will choke the engine.

IGNITION KEY

Recoil Model. The key must be turned to the ON position before you pull the recoil handle to start the engine. Remove the key when the mower is not in use. Turn the key to the left to the OFF position to stop the engine.

LIFT AND DISENGAGEMENT LEVER

The lift and disengagement lever is used to raise and lower the cutting deck, set the cutting height, and disengage the cutting blades.

Move the lever to the left and move the lever all the way forward and lock it to disengage the blades. The lever may be set in any one of the five cutting height positions. This lever works in conjunction with the deck wheel adjusters.

Electric Model. The key must be turned to the START position to start the engine. After the engine is running let the key return to the ON position. Remove the key when the mower is not in use. Turn the key to the OFF position to stop the engine.

INTERLOCKS (Not Shown)

An interlock safety switch is located on the clutch pedal and the lift and disengagement lever.

The clutch pedal must be depressed all the way down (the speed control handle can be pulled back to lock it down) and the lift and disengagement lever must be in the STOP position (forward) before the engine can be started.

On the recoil start model, the ignition will be grounded and on the electric start model, the starter will not run.

GEAR SHIFT LEVER

The gear shift lever has three positions, FORWARD, NEUTRAL and REVERSE. The clutch pedal must be depressed and the rider must not be moving when shifting gears. You may not be able to shift gears when the speed control handle is all the way back. Do not force the shift lever. Release the clutch pedal slightly to line up the shifting collar in the transmission and then try to shift.

BRAKE

To operate the brake depress the right pedal all the way down. To lock the brake in the park position, pivot the pedal forward with your foot as you depress it. It will stay in the depressed position. To release the parking brake, pivot the pedal to the rear.

DECK WHEEL ADJUSTERS

Always set both deck wheels in the same relative position. Set these wheels after you set the Lift and Disengagement Lever so they just clear the ground. This will prevent scalping the grass.

CLUTCH PEDAL

The clutch pedal on the left side when depressed reduces your ground speed and disengages the engine from the transmission when depressed all the way down. It can be held in the disengaged position by pulling the Speed Control Handle into the locked position (all the way back). To stop the mower, depress the Clutch and Brake Pedals.

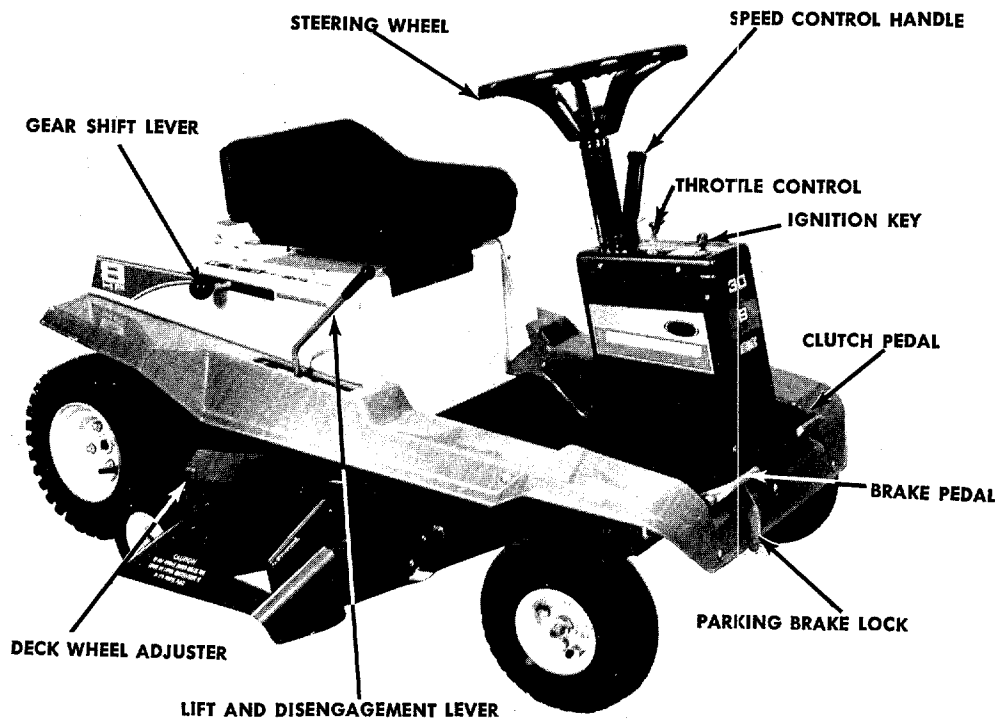


FIGURE 5. CONTROLS

SPEED CONTROL HANDLE See figures 5 and 6.

The Speed Control Handle can be used as a hand control for the clutch pedal and is also used to lock the clutch pedal in the disengaged position by pulling it all the way back towards the operator.

NOTE

The farther forward the Stop Lever is set, the faster your ground speed. Depressing the clutch pedal at any time will slow you down or, if depressed all the way, will stop the mower.

STOPPING

Engine—Turn the ignition key to the left to the OFF position.

Rider—Depress the clutch and brake pedals.

Blades—Move the lift and disengagement lever all the way forward and lock it.

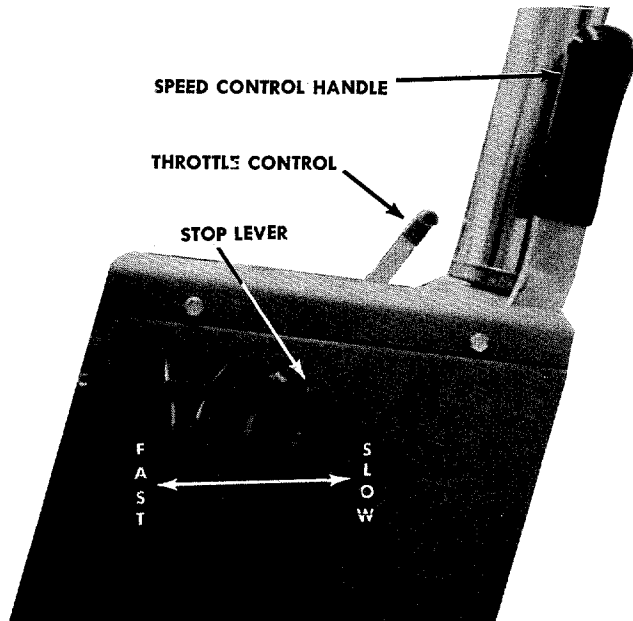


FIGURE 6. SPEED CONTROL

STOP LEVER See figures 5 and 6

The Stop Lever allows you to regulate the maximum ground speed of the riding mower by setting the Stop Lever in any one of the five settings.

OPERATING INSTRUCTIONS

CAUTION

1. Keep all shields and guards in place.
2. Before leaving operator's position:
 - Shift controls into neutral
 - Set parking brake
 - Disengage attachment drive
 - Shut off engine
 - Remove ignition key
3. Wait for all movement to stop before servicing machine.
4. Keep people and pets a safe distance away from machine.

STARTING THE ENGINE

1. Be sure the crankcase is filled with oil as recommended in the engine manual and put regular gasoline in the gasoline tank.
2. Be sure the fuel shut off valve located on the carburetor is open.
3. Attach the wire to the spark plug.
4. Depress the clutch pedal and lock it down with the speed control lever.
5. Move the lift and disengagement lever forward to the disengaged position and lock it.
6. Set the throttle control lever in the CHOKE position.
7. **Recoil Model.** Turn the ignition key to the ON position, twist the recoil starter handle until it is free and pull it with a quick steady motion. After the engine starts, return the recoil starter handle and twist it until it locks. See figure 7.

NOTE

If you do not do this the engine will quit running as soon as you engage the clutch or blades.

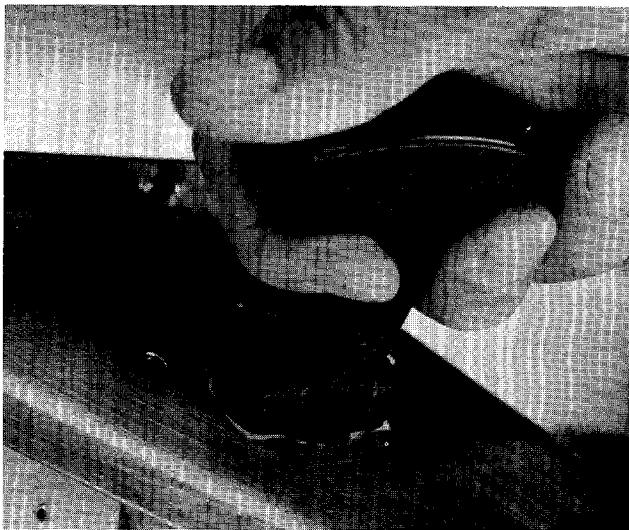


FIGURE 7. RECOIL STARTER

Electric Start Model. Turn the ignition key to the START position. As soon as the engine starts let the key return to the ON position.

Slowly return the throttle to the running position as soon as the engine starts.

8. To stop either model, turn the ignition key to the OFF position and remove the key when the rider is not in use.

PUTTING THE RIDER IN MOTION

1. Advance the throttle control from $\frac{3}{4}$ to full throttle to prevent strain on the engine and to operate the cutting blades.
2. Set the stop lever in the slowest position. **LEFT**
3. Hold the clutch pedal down with your ~~right~~ foot and release the speed control lever.
4. Place the gear shift lever in either the FORWARD or REVERSE position.

5. Slowly release the clutch pedal.
6. To stop the rider, depress the clutch pedal and the brake pedal.
7. The blades can be engaged either while moving or while standing still. Move the lift and disengagement lever back slowly until the blades are running.

After you feel you can control the machine in the slower speeds, set the stop lever in a faster position. The rider will maintain the highest speed you set without you touching the controls. If you want to slow down, depress the clutch pedal until you attain the speed you want. When you remove your foot from the clutch pedal the rider will operate at the highest speed that you set on the stop lever.

MAINTENANCE AND ADJUSTMENTS

THROTTLE CONTROL

To Check Operation:

1. Remove air cleaner.
2. Move throttle control lever to CHOKE position. The carburetor choke should be closed.
3. Move throttle control lever to STOP position. Lever should make good contact with stop switch.

To Adjust: See figure 8.

Place throttle control lever in FAST (high speed) position. Loosen control casing clamp screw "B". Move control casing "A" and wire until lever "D" touches choke operating link at "C". Tighten casing clamp screw "B". Replace air cleaner.

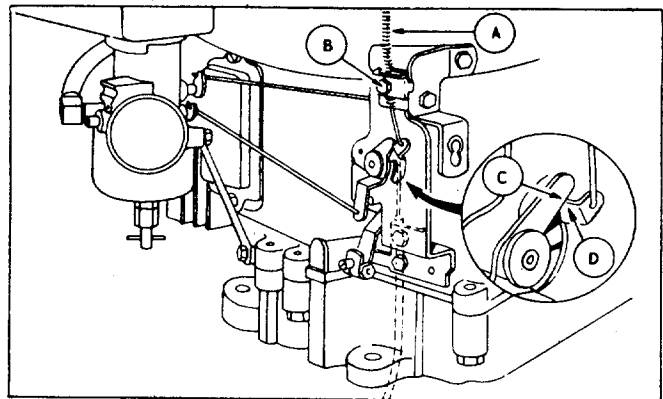


FIGURE 8. THROTTLE CONTROL ADJUSTMENT

CARBURETOR ADJUSTMENT

Carburetors are adjusted at the factory and normally do not need adjustment unless they have been disassembled.

Initial Adjustment After Re-assembly. See figure 9.

Turn needle valve clockwise until it just closes. **CAUTION:** Valve may be damaged by turning it too far. Now open needle valve 1-1/8 turns counterclockwise. Close idle valve in same manner and open 1-1/8 turns. This initial adjustment will permit the engine to be started and warmed up prior to final adjustment.

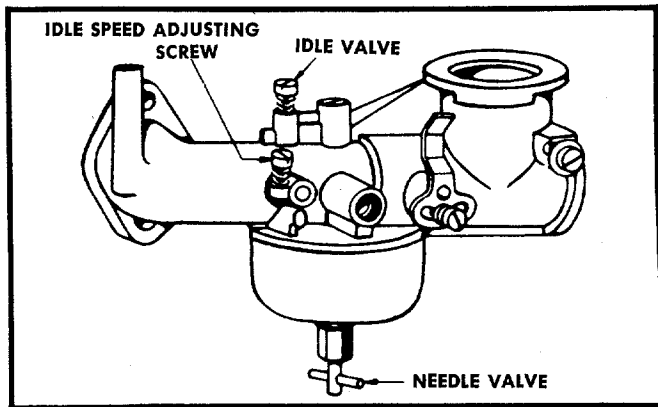


FIGURE 9. CARBURETOR ADJUSTMENT

Final Adjustment See figure 9.

Turn needle valve in until engine misses (lean mixture). Then turn it out past smooth operating point until engine runs unevenly (rich mixture). Now turn needle valve to the mid-point between rich and lean so the engine runs smoothly.

Hold throttle at idle position and set idle speed adjusting screw until fast idle is obtained (1750 RPM). Hold throttle in idle position and turn idle valve in (lean) and out (rich) until engine idles smoothly. Then reset idle speed adjusting screw so that engine idles at 1750 RPM. Release throttle—engine should accelerate without hesitation or sputtering. If engine does not accelerate properly the carburetor should be re-adjusted to a slightly richer mixture.

CHAIN ADJUSTMENT

After the first five hours of operation the initial slack should be removed from the chain. The chain should be tight enough so that it deflects approximately 1/2" when it is depressed with the thumb.

To Adjust:

The adjusting bolt is located under the frame, above the cutting deck on the right side of the mower. Turn the adjusting bolt clockwise with an open end wrench until the chain reaches the proper tension.

NOTE

If the transmission mounting plate will not slide forward to adjust the chain tension, it may be necessary to loosen the four nuts mounting the transmission to the frame.

BRAKE ADJUSTMENT See figure 10.

To adjust the brake tighten the locknut one half turn and then test the brakes. After attaining the proper adjustment, replace the cotter pin.

The brake is located by the right rear wheel inside the frame.

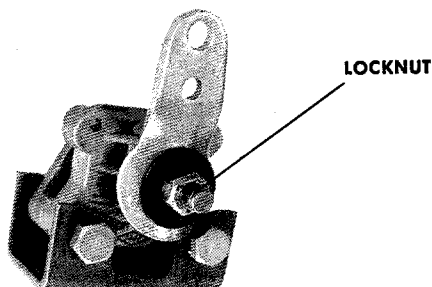


FIGURE 10. BRAKE ADJUSTMENT

BLADES

WARNING

Disconnect the spark plug wire and remove the ignition key before removing the blades.

Sharp and balanced blades are essential for efficient mowing and long mower and engine life. When sharpening blades, file equal amounts of metal from each side. The blades should be balanced before they are reinstalled. An unbalanced blade will cause excessive vibration and undue wear on the mower and the engine. When reassembling, all parts must be installed in the proper order and fastened securely.

Remove the 3/8" bolt and lockwasher. Pull the blade and adapter off the mower deck. To remove the adapter from the blade, remove the two 5/16" bolts, lockwashers and nuts. See figure 11.

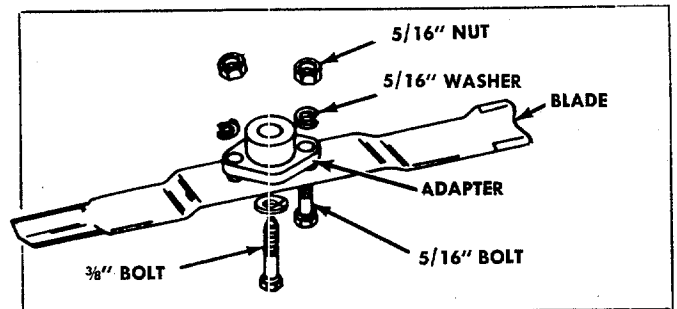


FIGURE 11. BLADE REMOVAL

MOWER DECK

The underside of the mower deck should be cleaned after each period of use as grass clippings, leaves, dirt and other matter will accumulate. This accumulation of grass clippings, etc., is undesirable as it will invite rust and corrosion and may cause an uneven discharge of grass clippings at the next mowing.

The deck may be cleaned by tilting the mower on its front wheels until the frame and the steering wheel supports the entire unit. Scrape clean with a suitable tool or by washing with a stream of water from a garden hose. Be sure to disconnect the spark plug wire and ground it while performing this maintenance.

BELT REMOVAL See figure 12.

To remove either or both belts:

1. Place the speed control lever in the locked position.
2. Move the lift and disengagement lever into the disengaged position.
3. Remove the two rear hex nuts on the engine bolts to remove the engine belt guard and slide the guard away from the chain and remove it.
4. Remove the blade drive belt from the engine pulley.
5. With the lift and disengagement lever lower the cutting deck all the way down.

NOTE

If you do not want to remove the blade drive belt go to step 8.

6. Remove the deck belt guards.
7. Remove and replace the belt.

To remove the variable speed belts:

8. Remove the variable speed pulley by removing the center hex lock nut and lock washer.

9. Remove the transmission pulley by removing the snap ring.

10. The belts can now be removed.

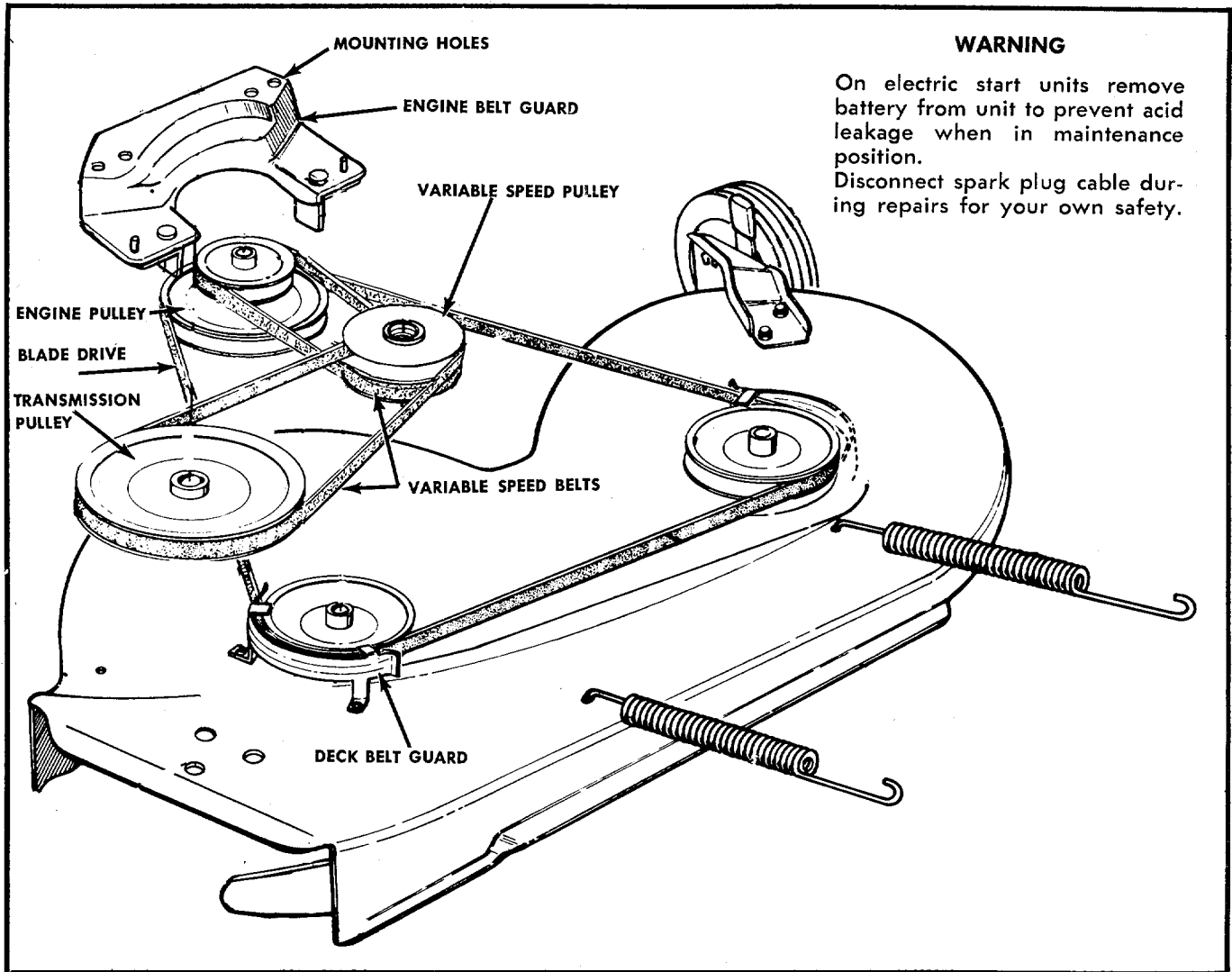


FIGURE 12. BELT REMOVAL LUBRICATION

1. **Engine.** Maintain the engine oil according to the engine manual.
2. **Bearings.** The following bearings are oil impregnated and do not require lubrication, however, their normal life can be extended by lubricating them once a season with a light, non-detergent oil.
 - A. King Pin Bearings (total 4 bearings)
 - B. Rear Axle Bearings (total 3 bearings)
 - C. Front Wheel Bearings (total 4 bearings)
 - D. Deck Wheel Bearings (total 4 bearings)
3. **Throttle Control and Cable.** Wipe oiled rag along entire length of cable.
4. **Chain.** Wipe oiled rag along entire length of chain.

NOTE

Under extremely dusty conditions do not oil the chain.

5. **Linkage.** Oil all deck linkage and height adjustment linkage.
6. **Transmission.** Lubricated at the factory, does not require checking. Lubricate with 4 oz. of Lubriplate No. 310 if disassembled.
7. **Differential.** Lubricated at the factory, does not require checking. Lubricate with 2 oz. of Lubriplate No. 310 if disassembled.

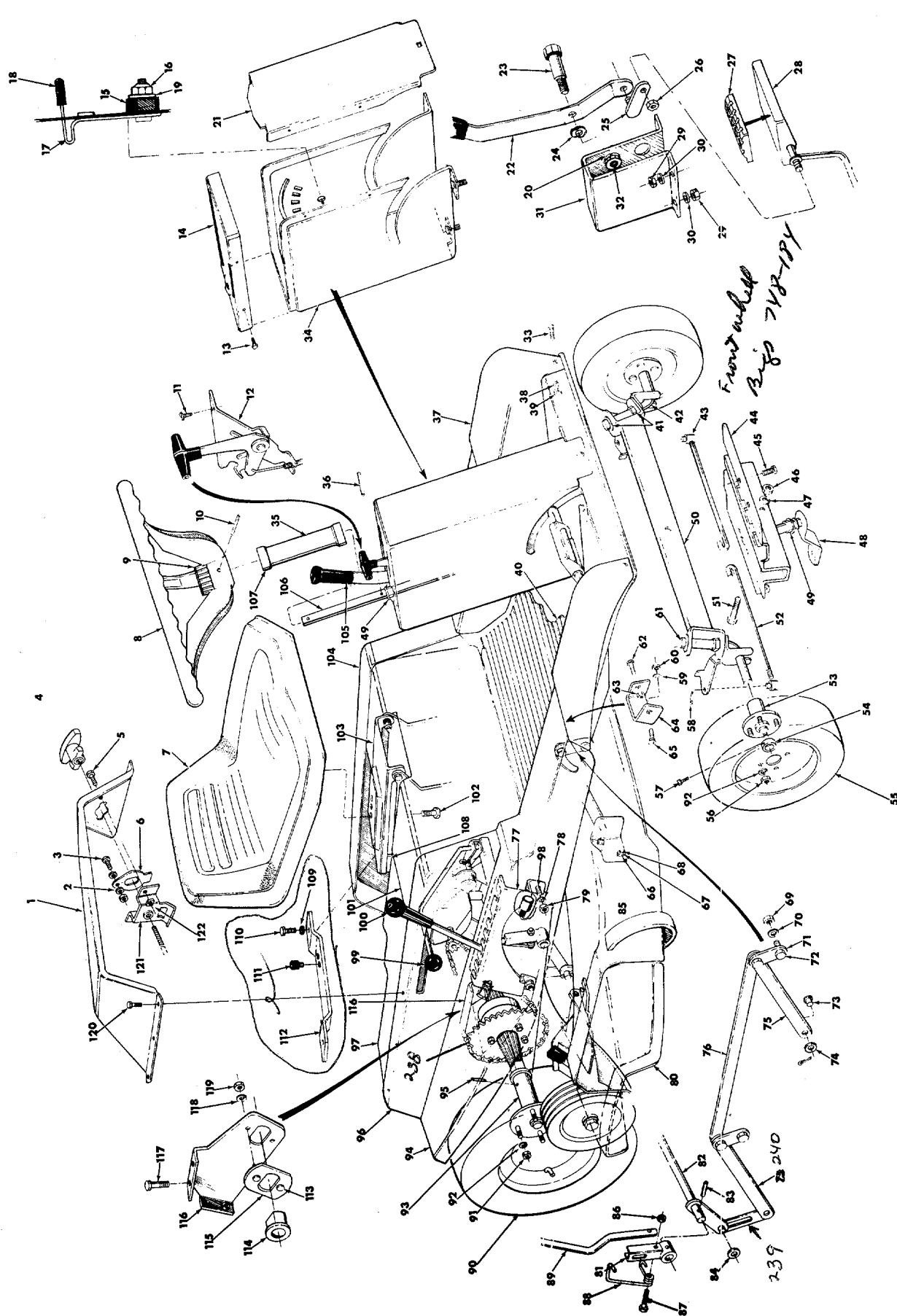


FIGURE 13.

NOTE: If for any reason Disc Brake is disassembled, be sure round end of push pins (Ref. No. 229) is toward the cam lever (Ref. No. 230).

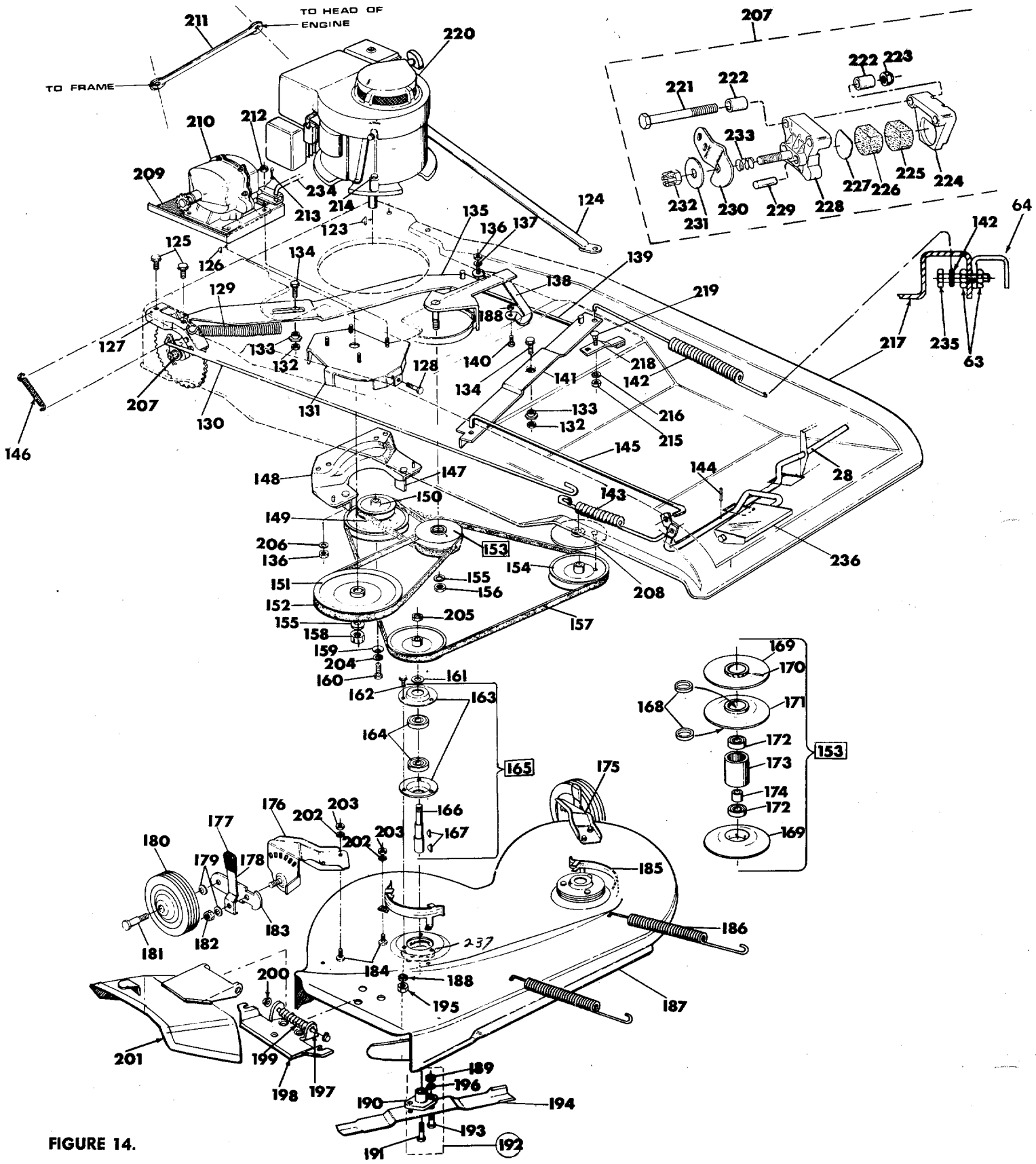


FIGURE 14.

PARTS LIST FOR MODEL NO. 132-425 AND 132-435

When ordering parts, always give the following information as shown in this list:

1. The PART NUMBER
2. The PART NAME
3. The MODEL NUMBER

Do not use Key Numbers when ordering Parts. Always use Part Numbers.

REF NO	PART NO	DESCRIPTION	REF. NO.	PART NO	DESCRIPTION.
1	11528	Engine Box Top Bezel Ass'y (132-425)	69	712-267	Hex Nut 5/16"-18 Thd.*
2	736-338	Fiber Washer (132-425)	70	736-119	Spring Lockwasher 5/16" Scr.*
3	710-425	Truss Hd. Mach. Scr. #10-24 x .62" Lg. (132-425)	71	437-9721	Pivot Link Assembly
4	11263	Handle—Plastic (132-425)	72	738-140	Shoulder Bolt .437" Dia. x .18" Lg.
5	710-351	Truss Hd. Self-Tap. Scr. #10 x .50" (132-425)	73	711-332	Lift Bracket Pin .500" Dia. x .78" Lg.
6	732-257	Switch Spring (132-425)	74	736-192	Flat Washer .531 I.D. x .93 O.D.
7	757-201	Seat	75	437-9761	Deck Link Assembly
8	723-208	Steering Wheel	76	437-9735	Connecting Rod
9	723-207	Steering Wheel Cap	77	10836	Index Bracket
10	715-131	Spring Pin Roll 1/4" Dia. x 2.00" Lg.	78	736-119	Spring Lockwasher 5/16" Scr.*
11	710-224	Hex Hd. Self-Tap. Scr. #10 x .50" Lg.*	79	712-267	Hex Nut 5/16-18 Thd.*
12	746-177	Throttle Control—Complete	80	11574	Chute Deflector
13	710-224	Hex Hd. Self-Tap. Scr. #10 x .50" Lg.*	81	10841	Handle Bracket Assembly
14	11373	Steering Box Top Cover (132-425)	82	10838	Lift Shaft Assembly
15	735-126	Rubber Washer .33 I.D. x .87 O.D.	83	715-107	Spirol Pin 5/16" Dia. x 1.38" Lg.
16	712-429	Hex Inserted Locknut 5/16-18 Thd.	84	736-192	Flat Washer .531 I.D. x .93 O.D.
17	10357	Handle Stop Assembly	85	438-9743	Deck Bracket
18	11249	Handle Stop Knob	86	712-107	Hex Center Locknut 1/4-20 Thd.
19	736-159	Flat Washer .344 I.D. x .88 O.D.	87	710-136	Hex Hd. Cap Scr. 1/4-20 x 1.75" Lg.*
20	736-169	Spring Lockwasher 3/8" Scr.*	88	732-231	Torsion Spring
21	10818	Steering Box—Front Cover	89	10837	Lift Handle
22	11377	Lockout Lever	90	502-10108	Rear Wheel Assembly—Complete
23	738-143	Shoulder Bolt .498" Dia. x .340" Lg.	91	712-798	Hex Nut 3/8-16 Thd.*
24	736-232	Wave Washer .530 I.D. x .78 O.D.	92	736-169	Spring Lockwasher 3/8" Scr.*
25	10064	Lockout Link Assembly	93	312-9714	Rear Wheel Hub Assembly
26	712-107	Hex Center Locknut 1/4-20 Thd.	94	10809	Fender—R.H.
27	10614	Pedal Pad—Vinyl	95	715-107	Spirol Pin 5/16" Dia. x 1.38" Lg.
28	11379	Clutch Foot Pedal Rod Ass'y.	96	10824	Side Panel—Engine Box—R.H.
29	712-267	Hex Nut 5/16-18 Thd.*	97	10827	Top Panel—Engine Box
30	736-119	Spring Lockwasher 5/16" Scr.*	98	710-260	Carriage Bolt 5/16-18 x .62" Lg.*
31	10832	Brake Lever Bracket	99	722-115	Ball Knob (Transmission)
32	712-798	Hex Nut 3/8-16 Thd.*	100	720-143	Grip
33	710-134	Carriage Bolt 1/4-20 x .62" Lg.	101	10826	Engine Box Front Panel
34	11375	Steering Box	102	710-365	Hex Hd. Cap Scr. 1/2-13 x .88" Lg.
35	310-9920	Steering Tube Spacer	103	10060	Seat Bracket
36	715-108	Spirol Pin 1/4" Dia. x 1.00" Lg.	104	10825	Side Panel—Engine Box L.H.
37	10810	Fender—L.H.	105	720-142	Flat Bar Grip
38	736-329	Spring Lockwasher 1/4" Scr.*	106	750-140	Steering Wheel Tubing
39	712-287	Hex Nut 1/4-20 Thd.*	107	310-9921	Bearing Cap
40	735-117	Floor Mat	108	10062	Battery Box Bracket Assembly
41	748-227	Hex Flange Bearing .630" I.D.	109	736-329	Spring Lockwasher 1/4" Scr.*
42	437-9709	Front Axle Ass'y.—L.H.	110	710-289	Hex Hd. Cap Scr. 1/4-20 x .50" Lg.*
43	711-198	Tie Rod End	111	735-109	Stem Bumper
44	11376	Front Pivot Bracket	112	710-198	Top Battery Box Bracket Assembly
45	710-198	Hex Sems Cap Scr. 5/16-18 x .75" Lg.*	113	710-198	Hex Sems Hd. Scr. 5/16-18 x .75" Lg.*
46	712-923	Hex Inserted Jam Nut 5/16-18	114	748-151	Flange Bearing
47	736-158	Spring Lockwasher 3/8" Scr.*	115	10470	Bearing Plate
48	310-9922	Steering Shaft Assembly	116	10471	Rear Axle Support Bracket Assembly
49	748-227	Hex Flange Bearing .630" I.D.	117	710-198	Hex Sems Hd. Scr. 5/16-18 x .75" Lg.*
50	437-9711	Pivot Bar Assembly	118	736-119	Spring Lockwasher 5/16" Scr.*
51	710-312	Hex Hd. Cap Scr. 3/8-18 x 1.31" Lg.*	119	712-267	Hex Nut 5/16-18 Thd.*
52	711-335	Tie Rod	120	710-224	Hex Hd. Self-Tap. Scr. #10 x .50" Lg.* (132-425)
53	312-9156	Front Wheel Hub Assembly	121	11053	Switch Bracket Ass'y. (132-425)
54	711-169	Collar 3/8" I.D.	122	712-287	Hex Nut 1/4-20 Thd.* (132-425)
55	734-423	Front Wheel Assembly—Complete with Hub	123	714-365	Key Hi-Pro #6 5/32 x 3/8" Dia.
56	712-798	Hex Nut 3/8-16 Thd.*	124	10803	Engine Brace Assembly
57	710-494	Sq. Hd. Set Scr. 5/16-18 x 1/4" Lg.	125	710-259	Sems Hex Hd. Cap Scr. 5/16-18 x 3/8" Lg.*
58	714-507	Cotter Pin 3/32" Dia. x .75" Lg.*	126	714-129	#4 Hi-Pro-Key 3/32" x 3/8" Dia. Hardened
59	736-329	Spring Lockwasher 1/4" Scr.*	127	10245	Disc Brake Bracket Assembly
60	712-287	Hex Nut 1/4-20 Thd.*	128	710-117	Hex Hd. Cap Scr. 5/16-24 x 1" Lg. Heat Treated
61	437-9706	Front Axle Ass'y.—R.H.	129	732-192	Spring—Variable Speed Brk.
62	710-252	Hex Hd. Cap Scr. 1/4-20 x .75" Lg.*	130	747-109	Brake Rod
63	712-287	Hex Nut 1/4-20 Thd.*	131	438-9780-1	Transmission Belt Guard Ass'y.
64	10806	Fender Brace	132	712-429	Hex Elastic Stop Nut 5/16-18 Thd.*
65	710-134	Carriage Bolt 1/4-20 x .62" Lg.	133	711-404	Shoulder Nut 5/16-18 Thd.
66	736-329	Spring Lockwasher 1/4" Scr.*	134	710-322	Sems Hex Hd. Cap Scr. 5/16-18 x 1.00" Lg.*
67	712-287	Hex Nut 1/4-20 Thd.*	135	348-9785	Variable Speed Bracket Ass'y.
68	710-289	Hex Hd. Cap Scr. 1/4-20 x .50" Lg.*	136	712-267	Hex Nut 5/16-18 Thd.*

PARTS LIST FOR MODEL NO. 132-425 AND 132-435 CONTINUED

REF. NO.	PART NO.	DESCRIPTION	REF. NO.	PART NO.	DESCRIPTION
137	736-119	Spring Lockwasher 5/16" Scr.*	187	11390	30" Inch Deck Assembly
138	10173	Variable Speed Bracket Guide Ass'y.	188	712-267	Hex Nut 5/16-18 Thd.*
139	10080	Variable Speed Rod 6.35" Lg.	189	712-123	Hex Nut 5/16-24 Thd.*
140	710-198	Sems Hex Hd. Cap Scr. 5/16-18 x 3/4" Lg.*	190	748-189	Blade Adapter
141	11382	Clutch Bar Rod	191	710-459	Hex Hd. Cap Scr. 3/8-24 x 1 1/2" Lg. Heat Treated
142	732-191	Spring .75 O.D. x 11.00" Lg.	192	10769	Blade Adapter Kit
143	732-245	Brake Spring	193	710-117	Hex Hd. Cap Scr. 5/16-24 x 1" Lg. Heat Treated
144	715-103	Spirol Pin 1/8" Dia. x .75" Lg.*	194	742-118	Blade 15 inch
145	10078	Foot Pedal Rod 18.89" Lg.	195	712-267	Hex Nut 5/16-18 Thd.*
146	732-157	Spring .38 O.D.	196	736-119	Spring Lockwasher 5/16" Scr.*
147	10426	Belt Keeper Ass'y.	197	711-571	Pivot Pin
148	10424	Belt Guard Cup Ass'y.	198	11399	Adapter Plate
149	754-135	"V"-Belt 21/32 x 25" Lg.	199	732-261	Torsion Spring
150	756-142	Two-Step Engine Pulley	200	726-106	Push-on Flange Palnut
151	756-174	Transmission Split Pulley .50 I.D. x 7.00 O.D.	201	11633	Chute Deflector
152	754-136	"V"-Belt 21/32 x 31" Lg.	202	736-119	Spring Lockwasher 5/16" Scr.*
153	10438	Variable Speed Pulley—Complete	203	712-267	Hex Nut 5/16-18 Thd.*
154	756-124	Pulley 4.75" O.D.	204	736-217	Spring Lockwasher 3/8" Scr. Heavy Duty
155	736-921	Spring Lockwasher 1/2" Scr.*	205	712-923	Hex Locknut 5/16 Thd.
156	712-384	Hex Center Locknut 1/2-13 Thd.	206	712-267	Hex Nut 5/16-18 Thd.*
157	754-127	"V"-Belt 21/32 x 66" Lg.	207	761-130	Disc Brake Assembly—Complete
158	712-922	Hex Jam Nut 1/2-20 Thd.	208	11530	Brake Disc Assembly (On Deck Pulley)
159	310-7386	Flat Washer	209	10247	Transmission Plate
160	710-152	Hex Hd. Cap Scr. 3/8-24 x 1" Lg.*	210	717-223	Transmission—Complete
161	736-162	Flat Washer .641 I.D. x 11 Ga.	211	10404	Engine Brace
162	710-322	Sems Hex Hd. Cap Scr. 5/16-18 x 1" Lg.*	212	712-429	Hex Elastic Stopnut 5/16-18 Thd.
163	310-8253	Bearing Housing	213	715-119	Spirol Pin 5/32" Dia. x .75" Lg.*
164	741-919	Ball Bearing	214	710-442	Hex Hd. Cap Scr. 5/16-18 x 1 1/2" Lg.*
165	901-9321	Blade Spindle Ass'y.—Complete	215	712-287	Hex Nut 1/4-20 Thd.*
166	711-255	Blade Spindle	216	736-329	Spring Lockwasher 1/4" Scr.*
167	714-365	#6 Hi-Pro-Key 5/32 x 5/8" Dia.	217	10057	Frame
168	748-179	Bronze Bushing (Order Ref. No. 171)	218	761-148	Blade Brake Assembly
169	748-177	Sheave Half	219	710-134	Carriage Bolt 1/4 x .62" Lg.
170	715-124	Spirol Pin	220	—	Engine
171	748-181	Movable Sheave Part	221	710-378	Hex Hd. Cap Scr.
172	741-139	Ball Bearing	222	11-1764-0000	Bushing
173	750-144	Steel Tubing	223	712-158	Hex Locknut
174	750-146	Spacer	224	12-1329-0000	Castings—Carrier Side
175	11237	Wheel Bracket Ass'y.—L.H.	225	15-1154-1049	Friction Pad .250 Thick
176	11236	Wheel Bracket Ass'y.—R.H.	226	15-1154-1079	Friction Pad .450 Thick
177	305-7520	Knob—For Spring Lever	227	03-1345-0000	Disc—Backup
178	10949	Spring Lever Ass'y. with Knob	228	12-1984-0007	Castings—Cam Side
179	736-105	Belleville Washer	229	05-1033-0000	Push Pin
180	734-225	Wheel Assembly Complete for Deck	230	18-1687-0000	Cam Lever
181	738-119	Shoulder Bolt .625" Dia. x 1.75" Lg.	231	03-1030-0000	Washer
182	712-214	Locknut 3/8-24 Thd.	232	02-1011-0000	Hex Locknut
183	10937	Pivot Bar	233	06-1029-0000	Spring
184	710-289	Hex Hd. Cap Scr. 1/4-20 x 1/2" Lg.*	234	10804	Shift Lever Ass'y.
185	438-9733	Deck Belt Guard	235	710-136	Hex Hd. Cap Scr. 1/4-20 x 1.75" Lg.*
186	732-153	Spring .75" O.D. x 8.65" Lg.	236	10848	Foot Pedal Latch Assembly

10846

237 9164 REIN. PLATE
 238 713-337 CHAIN 491 1/2x67
 713-723 #41 ML

For faster service obtain standard nuts, bolts and washers locally. If these items cannot be obtained locally order by part number and size as shown on parts list.

239 348-9737 Locknut
 240 348-9762 Deck Knif


When ordering replacement tires include all the information on the side wall of the tire such as the size and brand name.

- 437 — Flag Red)
- 312 — White)
- 488 — Polar Blue)

When ordering parts if color or finish is important, use the appropriate color code shown at left. (e.g. Polar Blue Finish—10094 (438)).

The engine is not under warranty by the mower manufacturer. If repairs or service is needed on the engine, please contact your nearest authorized engine service outlet. Check the "Yellow Pages" of your telephone book under "Engines—Gasoline."

**Find It Fast
 In The
 'Yellow Pages'**



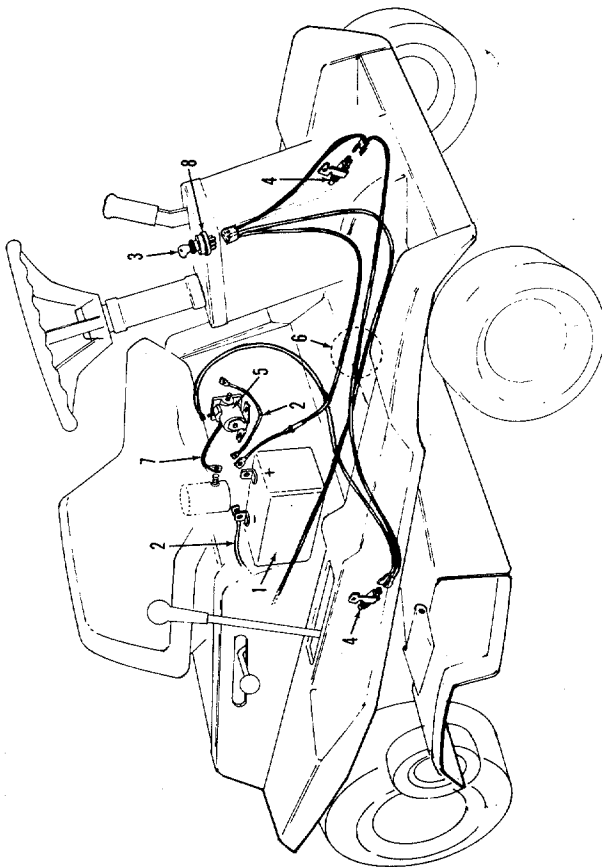


FIGURE 15. ELECTRICAL SYSTEM (ELECTRIC START MODEL)

PARTS LIST FOR ELECTRIC START MODEL

REF. NO.	PART NO.	DESCRIPTION
1	725-117	Battery
2	725-122	Wire
3	725-129	Key Only for Switch <i>301</i>
4	725-268	Safety Switch (Black)
5	725-270	Solenoid—Cole #24022
6	725-280	Wire Harness
7	725-150	Wire
8	725-267	Switch
9	725-156	Battery Charger 1 1/4 Amps. (Not Shown)

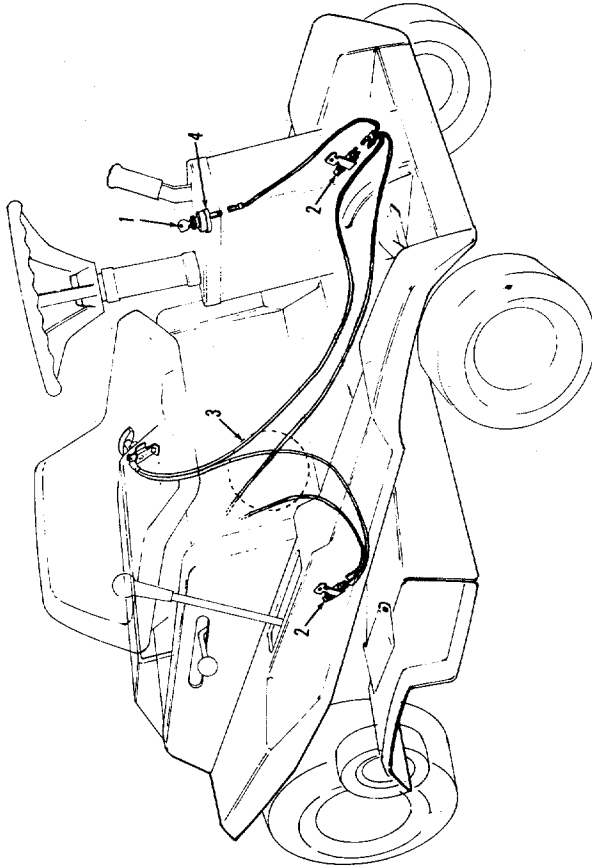


FIGURE 16. ELECTRICAL SYSTEM (RECOIL START MODEL)

PARTS LIST FOR RECOIL START MODEL

REF. NO.	PART NO.	DESCRIPTION
1	725-129	Key Only for Switch
2	725-269	Safety Switch (Red)
3	725-281	Wire Harness
4	725-266	Switch

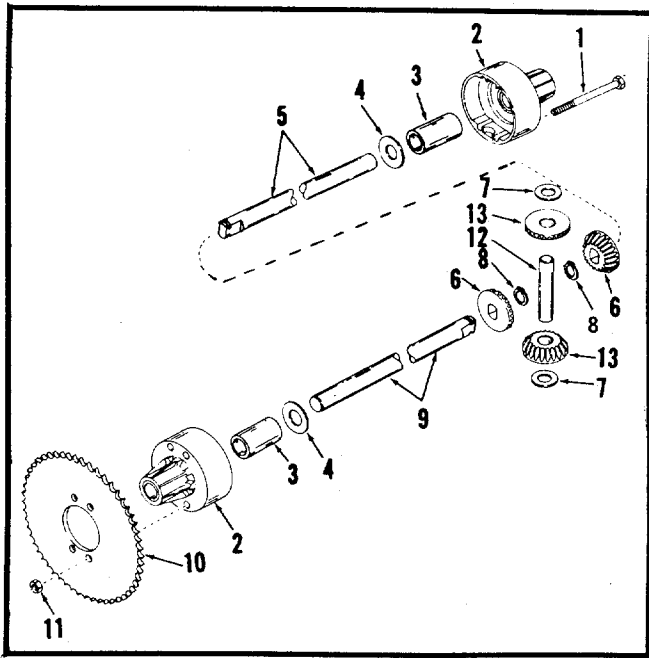


FIGURE 17. MODEL 9019795 DIFFERENTIAL

PARTS LIST FOR 901-9795 DIFFERENTIAL

REF. NO.	PART NO.	DESCRIPTION
1	710-363	Hex Head Cap Screw 5/16-24 x 4" Lg.*
2	719-150	Differential Housing (2 Req'd)
3	748-169	Sleeve Bearing (2 Req'd)
4	736-188	Washer (2 Req'd)
5	738-128	Shaft—Long
6	748-185	Miter Gear Double "D" Hole
7	736-182	Flat Washer (2 Req'd)
8	716-101	Truarc Snap Ring (2 Req'd)
9	738-127	Shaft—Short
10	394-9054	Sprocket
11	712-237	Hex Center Locknut 5/16-24 Thd.*
12	711-276	Drive Pin
13	748-158	Miter Gear Round Hole
14	715-123	Dowel Pin (Not Shown)

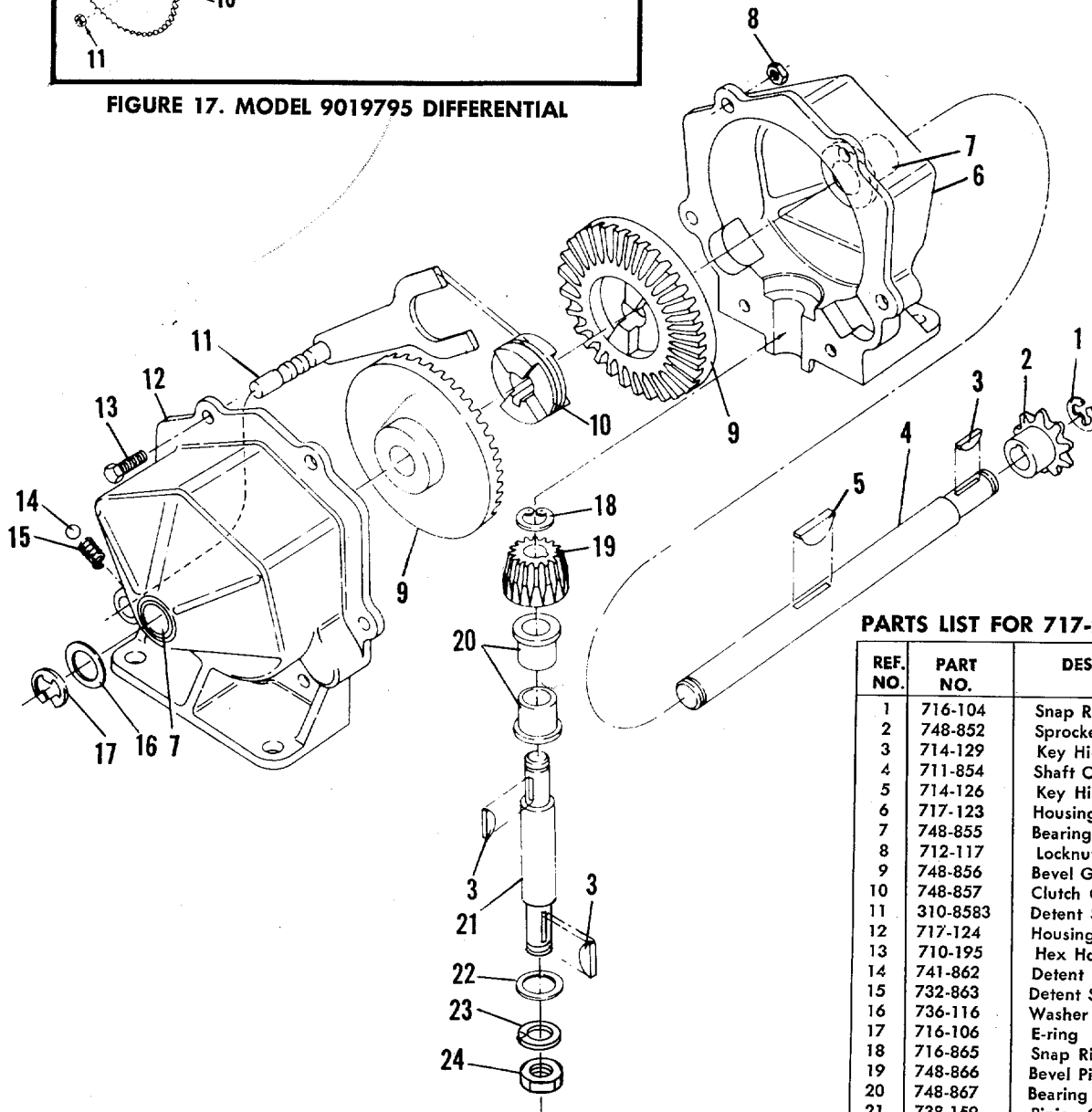


FIGURE 18. MODEL 717-223 TRANSMISSION

PARTS LIST FOR 717-223 TRANSMISSION

REF. NO.	PART NO.	DESCRIPTION
1	716-104	Snap Ring
2	748-852	Sprocket 8T #41
3	714-129	Key Hi-Pro #4
4	711-854	Shaft Output
5	714-126	Key Hi-Pro #606 (Hardened)
6	717-123	Housing Half
7	748-855	Bearing
8	712-117	Locknut 1/4-28 Thd.
9	748-856	Bevel Gear
10	748-857	Clutch Collar
11	310-8583	Detent Shaft Assembly
12	717-124	Housing Half with Detent Hole
13	710-195	Hex Hd. Cap Scr. 1/4-28 x .62
14	741-862	Detent Ball
15	732-863	Detent Spring
16	736-116	Washer
17	716-106	E-ring
18	716-865	Snap Ring #3100-50
19	748-866	Bevel Pinion
20	748-867	Bearing
21	738-159	Pinion Shaft
22	736-192	Washer
23	736-921	Snap Ring 1/2"
24	712-922	Hex Jam Nut 1/2-20 Thd.

BATTERY WARRANTY CERTIFICATE

The following general warranty policy applies to all batteries sold by IBMA members using this warranty. The nationwide warranty applies only to batteries bearing the IBMA seal of approval.

All new batteries sold by IBMA members carry a warranty against faulty material or workmanship for 90 days from date of purchase. A faulty battery is to be adjusted, repaired or replaced with a new battery by an IBMA member, jobber or dealer only, or the warranty becomes void. An IBMA type battery that is faulty within the 90 day period is to be repaired or replaced with a new battery F.O.B. any IBMA factory supplier or any IBMA authorized dealer, without charge.

Your battery carries a further warranty on a pro-rata adjustment basis covering the number of months determined by the class of service and type of battery. In determining the exchange cost of a new battery, charges will be made for months of service used and the warranty is valid to the original purchaser only.

IBMA approved factory suppliers, as well as all IBMA authorized dealers, are to honor this Warranty. If your IBMA approved battery carries the IBMA seal of approval, this Warranty is to be honored by dealers handling IBMA approved batteries everywhere. (Independent Battery Manufacturers Association, Inc.)

Failures in service that are caused by fire, collision, freezing, abuse, faulty electrical equipment or the use of a battery of a group size smaller or specifications lower than the original battery are not covered by this policy.

BATTERY MANUFACTURER MEMBERSHIP LIST

ALABAMA	Express Bty. Div.	Contract Bty. Mfg.	Shreveport	Maryland Heights	OREGON	Memphis
Birmingham	Leeth Brothers	Yocam Batteries	Central Bty.	Electro Bty. Mfg.	Beaverton	Central Battery
Southern Bty.	FLORIDA	ILLINOIS	MARYLAND	Sikeston	Western Bty., Inc.	Lahey Bty. Prod.
Yocam Batteries	Fort Lauderdale	Belleville	Baltimore	Electro Bty.	Portland	Southern Bty.
Mobile	Florida Bty.	Bell City Bty. Mfg.	East Penn Mfg.	NEW JERSEY	Lahey Bty. Prod.	Nashville
Yocam Batteries	Hialeah	Chicago	MASSACHUSETTS	Atlantic City	PENNSYLVANIA	Electro-Lite Bty.
Montgomery	East Penn Mfg.	Illinois Bty. Mfg.	Watertown	Landis Battery	Altoona	Southern Bty.
Ebco Battery	Jacksonville	Universal Bty.	Atlantic Bty.	NEW MEXICO	East Penn Mfg.	TEXAS
ALASKA	Tropex Batteries	Volta Bty. Corp.	MICHIGAN	Albuquerque	Erie	Dallas
Anchorage	Yocam Batteries	Peoria	Detroit	Sandia Bty. Mfg.	New Castle Bty.	Continental Bty.
Alaska Husky Bty.	Miami	Red Diamond Bty.	Batteries Mfg.	NEW YORK	Lancaster	Reliable Battery
ARKANSAS	Tropex Batteries	INDIANA	Flint	Buffalo	Lancaster Bty.	El Paso
Hot Springs	Yocam Batteries	Muncie	ABC Batteries	East Penn Mfg.	Lyon Station	El Paso Bty.
Red Diamond Bty.	Orlando	Stout Storage Bty.	Holly	Lockport	East Penn Mfg.	Houston
CALIFORNIA	Yocam Batteries	IOWA	Detroit Battery	Great Lakes Battery	New Castle	Texford Bty. Co.
Los Angeles	Pensacola	Corydon	Madison Heights	NORTH CAROLINA	New Castle Bty.	Reliable Battery
Estee Battery	Yocam Batteries	Voltmaster	C & W Lektra	Charlotte	Philadelphia	San Antonio
Lahey Bty. Prod.	St. Petersburg	Council Bluffs	Warren	Yocam Batteries	East Penn Mfg.	Reliable Battery
Oakland	Electro Battery Co.	Reliance Bty. Prod.	G & M Battery	Thomasville	Pittsburgh	UTAH
Lahey Bty. Prod.	Tampa	Des Moines	MINNESOTA	East Penn Mfg.	Simon Bty. & Res.	Salt Lake City
Sacramento	Bilt-Rite Bty. Mfg.	Voltmaster	St. Paul	OHIO	Geidel Bty. Div.	Lahey Bty. Prod.
Lahey Bty. Prod.	Contract Bty. Mfg.	KANSAS	Standard Storage Bty.	Akron	RHODE ISLAND	VIRGINIA
San Francisco	DeSoto Bty. & Elec.	Kansas City	MISSISSIPPI	Crown Battery	Providence	Arlington
Amp King Bty.	Tropex Batteries	American Batteries	Florence	Cincinnati	Pilof Mfg., Inc.	Express Bty. Div.
Lahey Bty. Prod.	Yocam Batteries	Contract Bty. Mfg.	Contract Bty. Mfg.	Moore Battery	SOUTH CAROLINA	Leeth Bros.
Pico Bty. Mfg.	GEORGIA	KENTUCKY	Jackson	Cleveland	Columbia	Lynchburg
Stockton	Albany	Whitesburg	Central Bty.	Crown Battery	Yocam Batteries	Hydrate Battery
Stockton Battery	Ebco Battery	Electro-Lite Bty.	New Albany	New Castle Bty.	TENNESSEE	WASHINGTON
COLORADO	Atlanta	LOUISIANA	Lahey Bty. Prod.	Columbus	Chattanooga	Seattle
Denver	Ebco Battery	New Orleans	MISSOURI	Crown Battery	Electro-Lite Bty.	Lahey Bty. Prod.
Moore Battery	Southern Bty.	Central Bty.	Joplin	Fremont	Knoxville	Lahey Bty. Prod.
D. C.	Yocam Batteries	Reliable Bty.	Lead Products	Crown Battery	Southern Bty.	Industrial Bty. & Supply
Washington	Ebco Battery					

WARRANTY

For one year from date of purchase, MTD Products Inc will replace for the original purchaser, free of charge, F.O.B. factory or authorized service firm, any part or parts found to be defective in material or workmanship. All transportation charges on parts submitted for replacement under this warranty must be paid by the purchaser. This warranty does not include replacement of parts which become inoperative through misuse, excessive use, accident, neglect, improper maintenance or alterations by unauthorized persons. This warranty does not include the engine, motor, battery, battery charger or any component parts thereof. For service on these units refer to the applicable manufacturer's warranty.

The above warranty will apply only to the original owner and will be effective only if the warranty card has been properly processed. It will not apply where the unit has been used commercially.

Warranty service is available through your local authorized service dealer or distributor. **UNDER NO CIRCUMSTANCES WILL THE RETURN OF A COMPLETE UNIT BE ACCEPTED BY THE FACTORY UNLESS PRIOR WRITTEN PERMISSION HAS BEEN EXTENDED.**

PARTS INFORMATION

MOWER, TILLER, SNOW THROWER AND TRACTOR PARTS

Mower, tiller, snow thrower and tractor parts are available through the authorized service firms listed below. All orders should specify the model number of your unit, parts numbers, description of parts and the quantity of each part required.

ENGINE PARTS AND SERVICE

Engine parts and service should be handled by your nearest authorized engine service firm. Check the yellow pages of your telephone directory under the listing *Engines - Gasoline*, Briggs and Stratton or Tecumseh Lauson - Power Products.

- A 1 Engine & Mower Co.**
327 East 9th Street
Salt Lake City, Utah 84102
- American Electric Ignition Co.**
124 N. W. 8th Street
Oklahoma City, Oklahoma 73102
- Auto Electric & Carburetor Co.**
2625 4th Avenue, S.
P. O. Box 1948
Birmingham, Alabama 35233
- Automotive Equipment Service Co.**
3117 Holmes Street
Kansas City, Missouri 64109
- Bailey's Rebuild Inc.**
1325 E. Madison Street
Seattle, Washington 98102
- Brown Equipment Distributor Inc.**
110 Beech Street
Corydon, Indiana 47112
- Bullard Supply**
2409 Commerce Street
Houston, Texas 77003
- Center Supply Company**
6867 New Hampshire Avenue
Takoma Park, Maryland 20012
- R. T. Clapp Co.**
2016 Magnolia Ave., N. E.
Knoxville, Tennessee 37917
- W. B. Clements**
400 Salem Avenue
Roanoke, Virginia 24016
- Morton B. Collins Co.**
300 Birnie Avenue
Springfield, Massachusetts 01107
- Dixie Sales Company**
P. O. Box 1408
327 Battleground Avenue
Greensboro, North Carolina 27402
- East Point Cycle & Key Shop**
1617 Whiteway
East Point, Georgia 30044
- Gamble Distributors**
West End Avenue
Carthage, New York 13619
- Garden Equipment Co., Inc.**
6600 Cherry Avenue
Long Beach, California 90805
- Henzler, Inc.**
2015 Lemay Ferry Road
St. Louis, Missouri 63125
- Frank E. Ives & Son**
1101 Lincoln Avenue
Prospect Park, Pennsylvania 19076
- J. W. Jewett Co.**
981 Folsom Street
San Francisco, California 94107
- Kenton Supply**
8216 North Denver Avenue
Portland, Oregon 97217
- Kimber's Inc.**
615 W. Genesee Street
Syracuse, New York 13204
- Marr Brothers**
423 E. Jefferson
Dallas, Texas 75203
- Mathews Auto Electric Co.**
420 East 2nd Street
Tulsa, Oklahoma 74120
- McClure Lawn & Garden Supply**
1114 Lexington Avenue
Mansfield, Ohio 44907
- Memphis Cycle & Supply Co.**
421 Monroe Avenue
Memphis, Tennessee 38103
- Moz-All of Florida, Inc.**
365 Greco Avenue
Coral Gables, Florida 33146
- National Central, Div. of Joe Sterling, Inc.**
Drawer "D" 687 Seville Rd.
Wadsworth, Ohio 44281
- Power Equipment Distributor**
36463 So. Gratiot Avenue
Mt. Clemens, Michigan 48043
- Parts & Sales Inc.**
335 West St. Charles Road
Villa Park, Illinois 60181
- Power Lawn & Garden Equip. Co.**
2551-2571 J. F. Kennedy Road
Dubuque, Iowa 52001
- Raub Supply Company**
James & Mulberry Sts.
Lancaster, Pennsylvania 17604
- Radco Distributors**
2403 Market Street
P. O. Box 3216
Jacksonville, Florida 32206
- Richmond Battery & Ignition**
P. O. Box 25369 - 957 Myers St.
Richmond, Virginia 23260
- Smith Hardware Company**
515 N. George Street
Goldsboro, North Carolina 27530
- South Denver Lawn Equip. Co.**
527 West Evans
Denver, Colorado 80223
- Suhren Engine**
8330 Earhart Blvd.
New Orleans, Louisiana 70118
- Sutton's Lawn Mower Shop**
Route 4, Box 343
North Little Rock, Arkansas 72117
- Warner Equipment**
7520 Lyndale Avenue, So.
Minneapolis, Minnesota 55423