

# Operating/Service Instructions

## RIDING MOWER

### IMPORTANT

## SAFE OPERATION PRACTICES - RIDING MOWERS

Model No.

132-410-053

1. Know the controls and how to stop quickly—**READ THE OWNER'S MANUAL.**
2. Do not allow children to operate vehicle. Do not allow adults to operate it without proper instruction.
3. Do not carry passengers. **Keep children and pets a safe distance away.**
4. Clear work area of objects which might be picked up and thrown.
5. Disengage all attachment clutches and shift into neutral before attempting to start engine (motor).
6. Disengage power to attachments and stop engine (motor) before leaving operator position.
7. Disengage power to attachment(s) and stop engine (motor) before making any repairs or adjustments.
8. Disengage power to attachments when transporting or not in use.
9. Take all possible precautions when leaving vehicle unattended; such as disengaging power-take-off, lowering attachments, shifting into neutral, setting parking brake, stopping engine and removing key.
10. Do not stop or start suddenly when going uphill or downhill. Mow up and down the face of steep slopes; never across the face.
11. Reduce speed on slopes and in sharp turns to prevent tipping or loss of control. Exercise extreme caution when changing direction on slopes.
12. Stay alert for holes in terrain and other hidden hazards.
13. Use care when pulling loads or using heavy equipment.
  - A. Use only approved drawbar hitch points.
  - B. Limit loads to those you can safely control.
  - C. Do not turn sharply. Use care when backing.
  - D. Use counterweight(s) or wheel weights when suggested in owner's manual.
14. Watch out for traffic when crossing or near roadways.
15. When using any attachments never direct discharge of material toward bystanders nor allow anyone near vehicle while in operation.
16. Handle gasoline with care—it is highly flammable
  - A. Use approved gasoline container.
  - B. Never remove cap or add gasoline to a running or hot engine or fill fuel tank indoors. Wipe up spilled gasoline.
  - C. Open doors if engine is run in garage—exhaust fumes are dangerous. Do not run engine (motor) indoors.
17. Keep vehicle and attachments in good operating condition and keep safety devices in place. Use guards as instructed in owner's manual.
18. Keep all nuts, bolts, and screws tight to be sure equipment is in safe working condition.
19. Never store equipment with gasoline in the tank inside a building where fumes may reach an open flame or spark.
20. Allow engine to cool before storing in any enclosure.
21. To reduce fire hazard keep engine free of grass, leaves or excessive grease.
22. Vehicle and attachments should be stopped and inspected for damage after striking a foreign object and the damage should be repaired before restarting and operating the equipment.
23. Do not change engine governor settings or over-speed engine.
24. When using vehicle with mower:
  - (1) Mow only in daylight or in good artificial light.
  - (2) Never make a cutting height adjustment while engine (motor) is running if operator must dismount to do so.
  - (3) Shut engine (motor) off when removing grass catcher and/or unclogging chute.
  - (4) Check blade mounting bolts for proper tightness at frequent intervals.
25. Check grass catcher bags frequently for wear or deterioration. Replace with new bags for safety protection.

# ASSEMBLY

GRASS CATCHER Model No. 192-010 is available as optional equipment for the mower shown in this manual.

## WARNING

1. The mower should not be operated without the entire grass catcher or chute deflector in place.
2. The mower should not be operated without the protective shield on the rear of the deck in place.

## NOTE

Under normal usage bag material is subject to wear, and should be checked periodically. Be sure any replacement bag complies with the mower manufacturer's recommendations.

For replacement bags, use only factory authorized replacement bag No. 764-121.

**IMPORTANT:** After striking a foreign object, stop the engine (motor). Remove wire from spark plug, thoroughly inspect the mower for any damage, and repair the damage before restarting and operating the mower.

## NOTE

Reference to right-hand or left-hand side of machine is from the driver's seat facing forward.

Your mower is shipped assembled except for the steering wheel and seat.

### STEERING WHEEL ASSEMBLY See figure 1.

- Step 1. Line up the hole in the steering column and the hole in the tubing and drive in the small roll pin with a hammer.

## NOTE

It may be necessary to use a drift pin to line up the holes.

- Step 2. Place the end caps on the spacer.  
Step 3. Slide the spacer over the tubing until it lays flush against the steering box.  
Step 4. Align the hole in the steering wheel and tubing and drive in the large roll pin with a hammer.  
Step 5. Place the cap on the steering wheel.

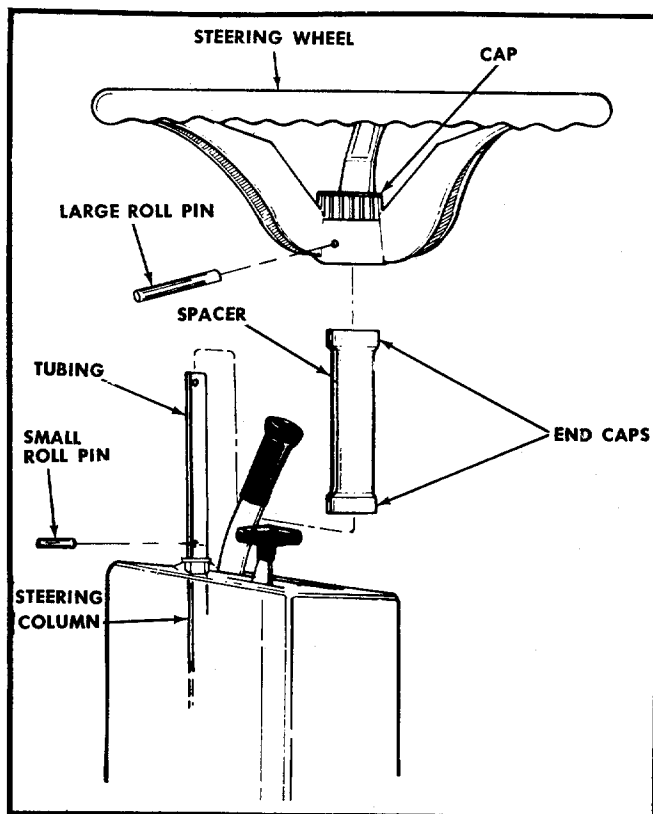


FIGURE 1. STEERING WHEEL ASSEMBLY

### SEAT ASSEMBLY

- Step 1. Assemble the seat to the seat bracket with the large carriage bolt and nut. See figure 2.

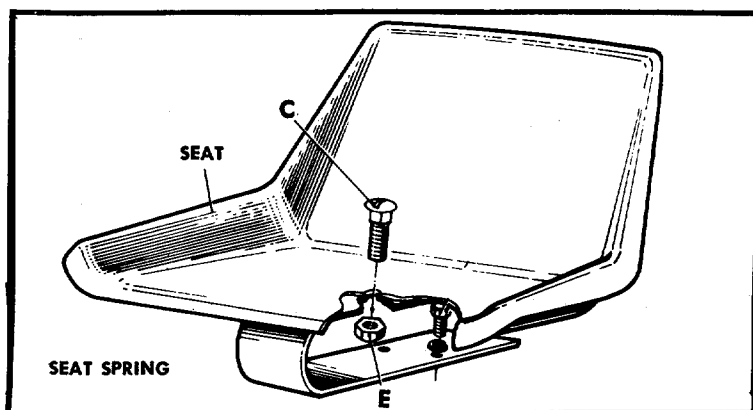


FIGURE 2. SEAT ASSEMBLY

## CONTROLS

### THROTTLE CONTROL

The throttle control is used to regulate the engine speed and to activate the choke on the engine. To get the maximum efficiency on cutting, the throttle should be in the FAST position when operating the mower. Pushing the throttle all the way forward, past FAST will choke the engine.

### IGNITION KEY

The key must be turned to the ON position before you pull the recoil handle to start the engine. Remove the key when the mower is not in use. Turn the key to the left to the OFF position to stop the engine.

### INTERLOCKS (Not Shown)

An interlock safety switch is located on the clutch pedal and the lift and disengagement lever.

The clutch pedal must be depressed all the way down (the speed control handle can be pulled back to lock it down) and the lift and disengagement lever must be in the STOP position (forward) before the engine can be started.

On the recoil start model, the ignition will be grounded and on the electric start model, the starter will not run.

### GEAR SHIFT LEVER

The gear shift lever has three positions, FORWARD, NEUTRAL and REVERSE. The clutch pedal must be depressed and the rider must not be moving when shifting gears. You may not be able to shift gears when the speed control handle is all the way back. Do not force the shift lever. Release the clutch pedal slightly to line up the shifting collar in the transmission and then try to shift.

### BRAKE

To operate the brake depress the right pedal all the way down. To lock the brake in the park position, pivot the pedal forward with your foot as you depress it. It will stay in the depressed position. To release the parking brake, pivot the pedal to the rear.

### LIFT AND DISENGAGEMENT LEVER

The lift and disengagement lever is used to raise and lower the cutting deck, set the cutting height, and disengage the cutting blades.

Move the lever to the left and move the lever all the way forward and lock it to disengage the blades. The lever may be set in any one of the five cutting height positions. This lever works in conjunction with the deck wheel adjusters.

### DECK WHEELS

Always set both deck wheels in the same relative position. Set these wheels after you set the Lift and Disengagement Lever so they just clear the ground. This will prevent scalping the grass.

### CLUTCH PEDAL

The clutch pedal on the left side when depressed reduces your ground speed and disengages the engine from the transmission when depressed all the way down. It can be held in the disengaged position by pulling the Speed Control Handle into the locked position (all the way back). To stop the mower, depress the Clutch and Brake Pedals.

Depressing the clutch pedal at any time will slow you down or, if depressed all the way, will stop the mower.

## OPERATING INSTRUCTIONS

### CAUTION

1. Keep all shields and guards in place.
2. Before leaving operator's position:
  - Shift controls into neutral
  - Set parking brake
  - Disengage attachment drive
  - Shut off engine
  - Remove ignition key
3. Wait for all movement to stop before servicing machine.
4. Keep people and pets a safe distance away from machine.

### STOPPING

**Engine**—Turn the ignition key to the left to the OFF position.

**Rider**—Depress the clutch and brake pedals.

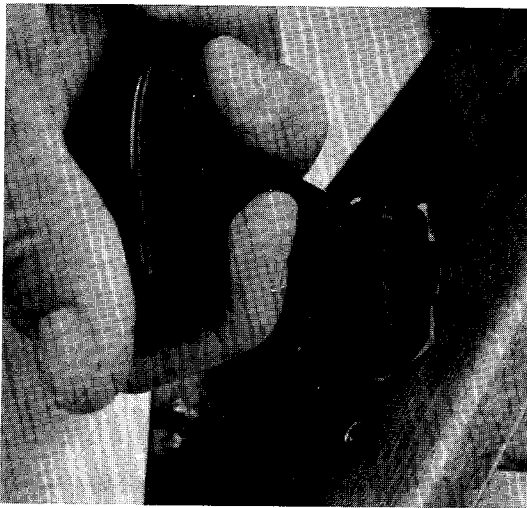
**Blades**—Move the lift and disengagement lever all the way forward and lock it.

### STARTING THE ENGINE

1. Be sure the crankcase is filled with oil as recommended in the engine manual and put regular gasoline in the gasoline tank.
2. Be sure the fuel shut off valve located on the carburetor is open.
3. Attach the wire to the spark plug.
4. Depress the clutch pedal and lock it down with the speed control lever.
5. Move the lift and disengagement lever forward to the disengaged position and lock it.
6. Set the throttle control lever in the CHOKE position.
7. Turn the ignition key to the ON position, twist the recoil starter handle until it is free and pull it with a quick steady motion. After the engine starts, return the recoil starter handle and twist it until it locks. See figure 3

### NOTE

If you do not do this the engine will quit running as soon as you engage the clutch or blades.



**FIGURE 3. RECOIL STARTER**

8. To stop the mower turn the ignition key to the OFF position and remove the key when the rider is not in use.

### PUTTING THE RIDER IN MOTION

1. Advance the throttle control from  $\frac{3}{4}$  to full throttle to prevent strain on the engine and to operate the cutting blades.
2. Hold the clutch pedal down with your left foot.
3. Place the gear shift lever in either the FORWARD or REVERSE position.
4. Slowly release the clutch pedal.
5. To stop the rider, depress the clutch pedal and the brake pedal.
6. The blades can be engaged either while moving or while standing still. Move the lift and disengagement lever back slowly until the blades are running.

After you feel you can control the machine in the slower speeds, set the stop lever in a faster position. The rider will maintain the highest speed you set without you touching the controls. If you want to slow down, depress the clutch pedal until you attain the speed you want. When you remove your foot from the clutch pedal the rider will operate at the highest speed.

## MAINTENANCE AND ADJUSTMENTS

### THROTTLE CONTROL See figure 4.

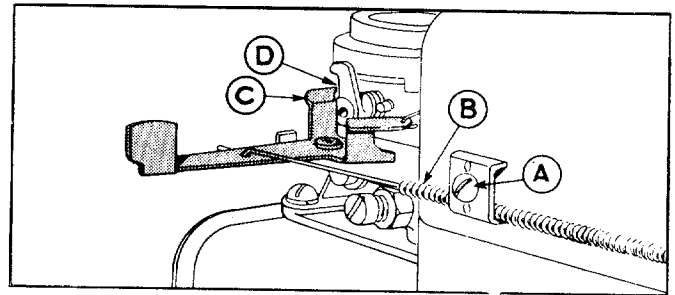
#### To Check Operation:

Remove Air Cleaner. Move remote control lever to CHOKE position. The carburetor choke should then be closed. Move the remote control lever to STOP. Control lever on carburetor should then make good contact with stop switch to short out ignition.

#### To Adjust

Place remote control lever on equipment in FAST (high speed) position.

Lever C on carburetor should be just touching choke arm at D. To adjust, loosen casing clamp screw A on blower housing. Move control casing B forward or backward until correct position is obtained. Tighten screw A.



**FIGURE 4. THROTTLE ADJUSTMENT**

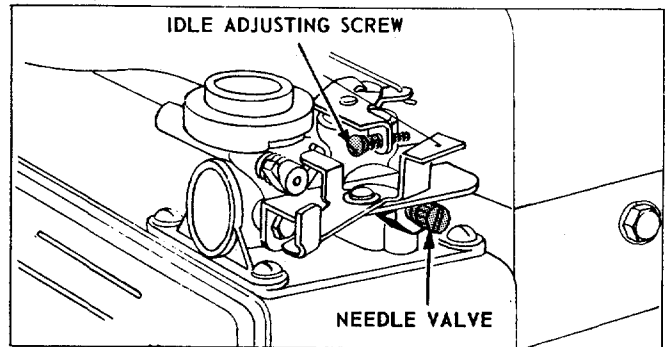
Recheck operation of controls after adjustment. Replace air cleaner.

### CARBURETOR ADJUSTMENTS See figure 5.

Minor carburetor adjustments may be required to compensate for differences in fuel, temperature, altitude and load.

#### Initial Adjustment:

Turn needle valve clockwise to close it. Then open 2 turns. This initial adjustment will permit the engine to be started and warmed up before making final adjustment.



**FIGURE 5. CARBURETOR ADJUSTMENT**

#### Final Adjustment:

With engine running at normal operating speed (approximately 3000 RPM without load) turn needle valve clockwise until engine starts to lose speed (lean mixture). Then slowly turn needle valve counterclockwise past the point of smoothest operation until engine just begins to run unevenly. This mixture will give best performance under load.

To check adjustment move engine control from SLOW to FAST speed. If engine tends to stall or die out, it usually indicates that the mixture is slightly lean and it may be necessary to open the needle valve slightly to provide a richer mixture. This richer mixture may cause a slight unevenness in idling.

### CHAIN ADJUSTMENT

After the first five hours of operation the initial slack should be removed from the chain. The chain should be tight enough so that it deflects approximately  $\frac{1}{2}$ " when it is depressed with the thumb.

#### To Adjust:

The adjusting bolt is located under the frame, above the cutting deck on the right side of the mower.

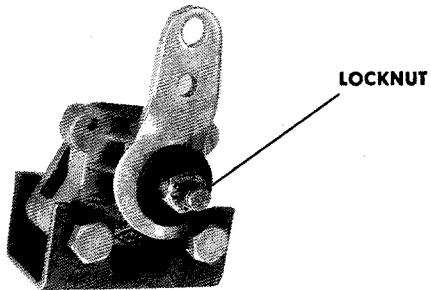
Turn the adjusting bolt clockwise with an open end wrench until the chain reaches the proper tension.

## NOTE

If the transmission mounting plate will not slide forward to adjust the chain tension, it may be necessary to loosen the four nuts mounting the transmission to the frame.

### **BRAKE ADJUSTMENT** See figure 6.

To adjust the brake, tighten the locknut one half turn and then test the brakes. Repeat if necessary. The brake is located by the right rear wheel inside the frame.



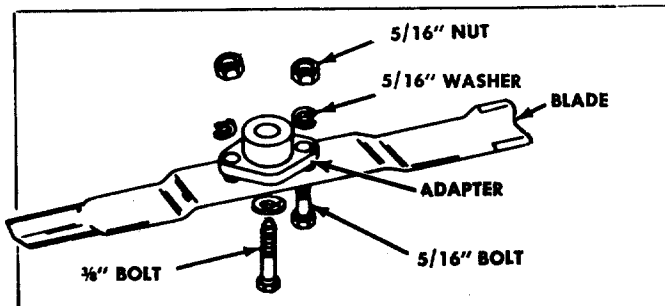
**FIGURE 6. BRAKE ADJUSTMENT**

### **BLADES**

#### **WARNING**

Disconnect the spark plug wire and remove the ignition key before removing the blades.

Sharp and balanced blades are essential for efficient mowing and long mower and engine life. When sharpening blades, file equal amounts of metal from each side. The blades should be balanced before they are reinstalled. An unbalanced blade will cause excessive vibration and undue wear on the mower and the engine. When reassembling, all parts must be installed in the proper order and fastened securely. Remove the  $\frac{3}{8}$ " bolt and lockwasher. Pull the blade and adapter off the mower deck. To remove the adapter from the blade, remove the two  $\frac{5}{16}$ " bolts, lockwashers and nuts. See figure 7.



**FIGURE 7. BLADE REMOVAL**

## **MOWER DECK**

The underside of the mower deck should be cleaned after each period of use as grass clippings, leaves, dirt and other matter will accumulate. This accumulation of grass clippings, etc., is undesirable as it will invite rust and corrosion and may cause an uneven discharge of grass clippings at the next mowing.

The deck may be cleaned by tilting the mower on its front wheels until the frame and the steering wheel supports the entire unit. Scrape clean with a suitable tool or by washing with a stream of water from a garden hose. Be sure to disconnect the spark plug wire and ground it while performing this maintenance.

### **BELT REMOVAL** See figure 8.

#### **To Remove the Deck Belt:**

- Step 1. Put the Lift and Disengagement Lever into the ENGAGED position.
- Step 2. Remove both keepers on the engine belt guard.
- Step 3. Remove the two keepers on the deck pulley.
- Step 4. Remove the shoulder bolt on the deck pulley.
- Step 5. Move the Lift and Disengagement Lever into the disengaged position and remove the belt.
- Step 6. Reassemble in reverse order with the new belt.

When assembling the idler be sure the longer shoulder is up so the idler turns free.

#### **To Remove the Transmission Belt:**

- Step 1. Put the Lift and Disengagement Lever into the engaged position.
- Step 2. Put the parking brake on.
- Step 3. Remove the entire engine belt guard.
- Step 4. Remove the nut holding the idler in place.
- Step 5. Remove the transmission pulley.
- Step 6. Raise the cutting deck and remove the deck belt from the engine pulley.
- Step 7. Remove and replace the transmission belt.
- Step 8. Reassemble in reverse order.

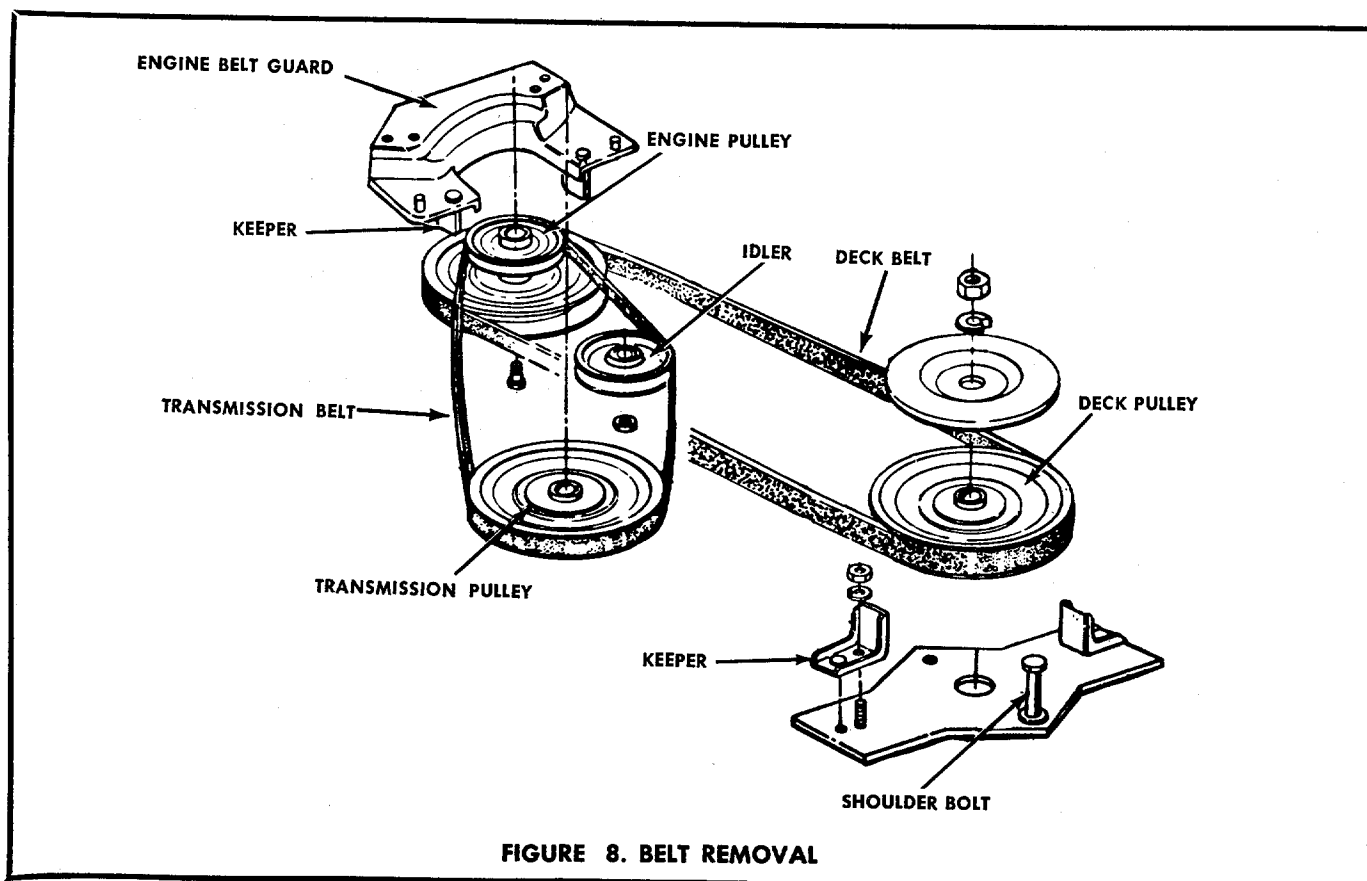


FIGURE 8. BELT REMOVAL

## LUBRICATION

1. **Engine.** Maintain the engine oil according to the engine manual.
2. **Bearings.** The following bearings are oil impregnated and do not require lubrication, however, their normal life can be extended by lubricating them once a season with a light, non-detergent oil.
  - A. King Pin Bearings (total 4 bearings)
  - B. Rear Axle Bearings (total 2 bearings)
  - C. Front Wheel Bearings (total 4 bearings)
  - D. Deck Wheel Bearings (total 4 bearings)
3. **Throttle Control and Cable.** Wipe oiled rag along entire length of cable.
4. **Chain.** Wipe oiled rag along entire length of chain.

### NOTE

Under extremely dusty conditions do not oil the chain.

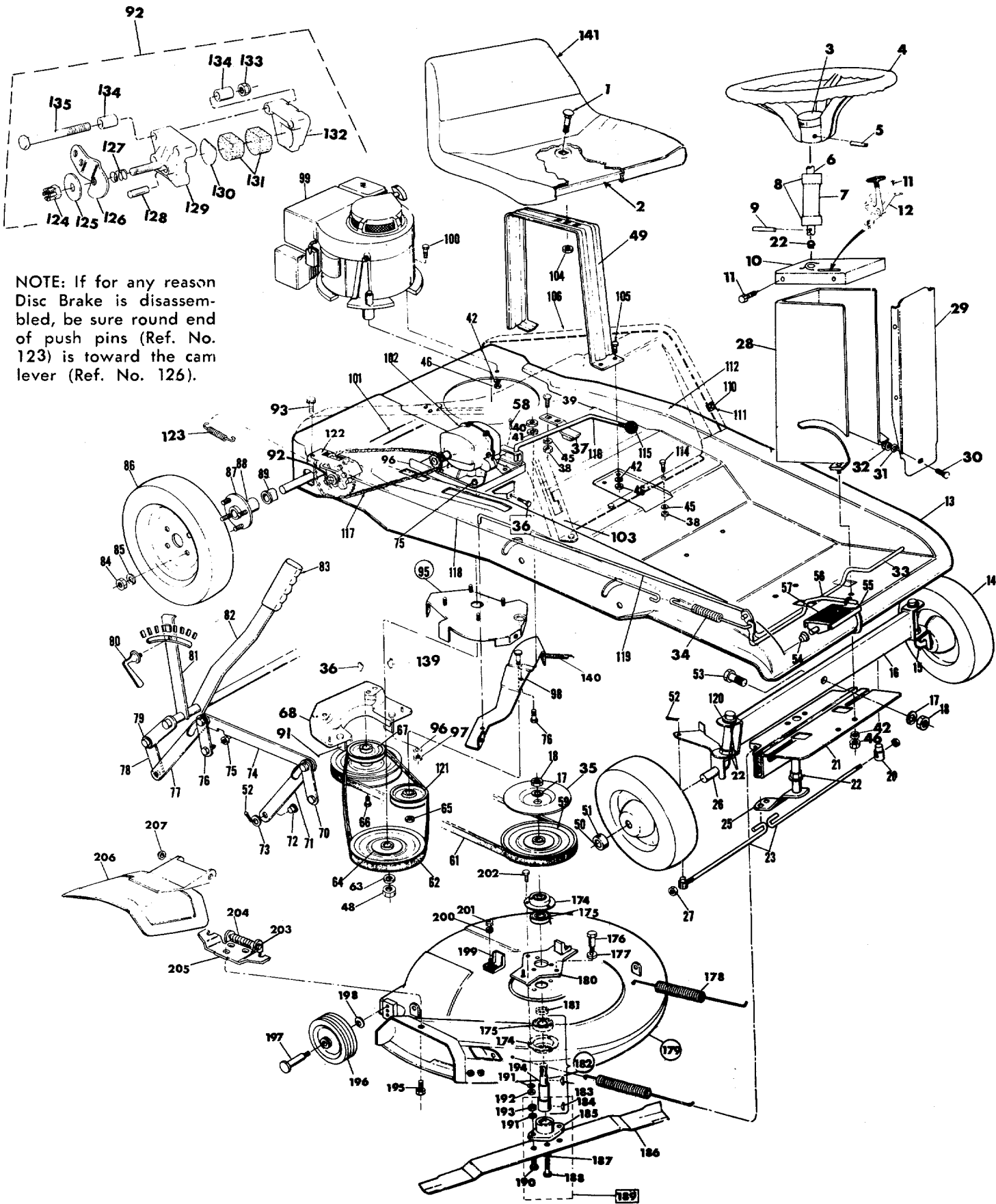
5. **Linkage.** Oil all deck linkage and height adjustment linkage.
6. **Transmission.** Lubricated at the factory, does not require checking. Lubricate with 4 oz. of Lubriplate No. 310 if disassembled.

## OFF-SEASON STORAGE

### NOTE

Engines to be stored over 30 days should be completely drained of fuel to prevent gum deposits forming on essential carburetor parts, fuel filters, fuel lines and tank.

1. Remove all fuel from fuel tank. Run the engine until it stops from lack of fuel. The small amount of fuel that remains in the sump of the tank should then be removed by absorbing it with a clean, dry cloth.
2. While engine is still warm, drain oil from crankcase. Refill with fresh oil.
3. Remove spark plug, pour 1 ounce of SAE 30 oil into cylinder and crank slowly to distribute oil. To prevent accidental starting, DO NOT replace the spark plug.
4. Clean dirt and chaff from cylinder, cylinder head fins and blower housing.
5. Clean all grass from underside of deck.
6. Clean the air filter.
7. Place blocks under frame of mower so that the wheels are off the ground.
8. Cover all bare metal parts, such as the mowing edge of the blades, with grease to prevent rusting.
9. Cover the mower with a tarpaulin or other protective covering.



NOTE: If for any reason Disc Brake is disassembled, be sure round end of push pins (Ref. No. 123) is toward the cam lever (Ref. No. 126).

FIGURE 9. EXPLODED VIEW

**PARTS LIST FOR MOWER MODEL 132-410-053**

Ref. No.	Part No.	Description	Ref. No.	Part No.	Description
1	710-385	Carriage Bolt 1/2-13 x 1 Lg.*	66	710-152	Hex Hd. Cap Scw. 3/8-24 x 1 Lg.*
2	312-8535	Seat Assembly	67	756-141	Pulley—Two Step
3	723-207	Steering Wheel Cap	68	10423	Belt Guard—Engine
4	723-208	Steering Wheel	70	348-9721	Pivot Link Assembly
5	715-131	Spirol Pin 1/4" Dia. x 2.00" Lg.	71	348-9761	Deck Link Assembly
6	750-140	Steering Wheel Tubing	72	711-332	Lift Bracket Pin
7	310-9920	Steering Tube Spacer	73	736-192	Flat Washer .53 I.D. x 94 O.D.*
8	310-9921	Bearing Cap	74	348-9735	Connecting Rod
9	715-108	Spirol Pin 1/4" Dia. x 1.00" Lg.	75	712-429	Hex Elastic Stop Nut 5/16-18 Thd.*
10	11372	Steering Box Cover	76	738-119	Shoulder Bolt
11	710-224	Hex Hd. Self Tap Scr. #10 x .50" Lg.	77	348-9762	Deck Link
12	746-172	Throttle Control Complete	78	348-9737	Lockout Link
13	10057	Frame	79	736-192	Flat Washer .53 I.D. x 94 O.D.
14	734-412	Front Wheel Assembly	80	710-309	Adjusting Screw
	748-146	Bearings (2)	81	348-9715	Adjustment Bracket
15	310-9709	Front Axle Assembly—L.H.	82	347-9717	Lift Handle Assembly
16	348-9711	Pivot Bar	83	720-141	Grip
17	736-158	Spring Lockwasher 3/8 Screw*	84	712-798	Hex Nut 3/8-16 Thread*
18	712-923	Locknut 3/8 Thread*	85	736-169	Spring Lockwasher 3/8 Screw*
19	710-272	Hex Hd. Cap Scw. 10-24 x 1/2 Lg.*	86	502-10108	Rear Wheel Assembly—Complete
20	711-198	Pivot Bushing		734-298	Tire Only
21	347-9728	Front Pivot Bracket	87	312-9714	Hub Assembly
22	748-227	Flange Bearing 3/8 I.D.	88	715-107	Spirol Pin 5/16 x 1.38 Long*
23	711-335	Tie Rod	89	748-151	Flange Bearing 3/4 I.D.
25	310-9922	Steering Arm	91	10426	Belt Keeper
26	310-9706	Axle Assembly—Front R.H.	92	761-130	Disc Brake Assembly
27	712-123	Hex Nut 5/16-24 Thread*	93	710-378	Hex Hd. Cap Scw. 5/16-18 x 2 1/2 Lg.*
28	11374	Steering Box Assembly	95	10086	Belt Guard—Transmission
29	10818	Steering Box Front	96	736-119	Spring Lockwasher 5/16 Screw*
30	710-260	Carriage Bolt 5/16-18 x .62" Lg.	97	712-267	Hex Nut 5/16-18 Thread*
31	736-119	Spring Lockwasher 5/16" Scr.*	98	11438	Idler Bracket Assembly
32	712-267	Hex Nut 5/16-18 Thd.*	99	— — —	Engine
33	11532	Clutch Foot Pedal Rod Ass'y.	100	710-442	Hex Hd. Cap Scw. 5/16-18 x 1 1/2 Lg.*
34	732-245	Brake Spring	101	901-9795	Differential
35	11073	Brake Disc (For Deck Pulley)	102	717-223	Single Speed Transmission
36	714-365	Key—Hi Pro #505*	103	347-9758	Rear Cover R.H.
37	761-147	Blade Brake Assembly	104	712-384	Hex Center Locknut 1/2-13 Thread*
38	712-287	Hex Nut 1/4-20 Thd.*	105	710-323	Truss Head Machine Screw—5/16-18 x 3/4" Lg.*
39	710-289	Hex Hd. Cap Scr. 1/4-20 x .50" Lg.*	106	347-9760	Rear Cover L.H.†
40	712-923	Hex Center Locknut 3/8-18 Thd.	110	710-240	Sems Hex Head Self Tap Screw—Type F 10-32 x 1/2*
41	736-158	Spring Lockwasher 3/8" Scr.*	111	712-147	Speed Nut U Type 10-24*
42	736-119	Spring Lockwasher 5/16 Screw*	112	11385	Rear Cover—Center
45	736-329	Spring Lockwasher 1/4 Screw*	114	710-286	Truss Head Machine Screw—1/4-20 x 1/2 Lg.*
46	712-267	Hex Nut 5/16-18 Thd.*	115	722-115	Knob—Transmission
49	10174	Seat Support Ass'y.	116	10276	Shift Lever Assembly
50	711-169	Collar 3/8 I.D.	117	713-357	Chain No. 41—1/2" x 67 Links
51	710-494	Sq. Hd. Set Scr. 5/16-18 x .38" Lg.		713-723	Masterlink #41
52	714-111	Cotter Pin*	118	747-109	Brake Rod 31.62" Lg.
53	710-312	Hex Hd. Cap Scw. 3/8-18 x 1.31*	119	10079	Foot Pedal Rod 27.44" Lg.
54	726-221	Push Cap 1/2 Diameter	120	736-860	Flat Washer .64 I.D.
55	10848	Foot Pedal Lock	121	756-116	V-Belt Idler
56	11378	Foot Pedal Rod	122	10245	Disc Brake Bracket Assembly
57	10614	Foot Pedal Pad	123	732-157	Spring .38 O.D.
59	756-143	Pulley—Deck	124	02-1011-0000	Hex Locknut
61	754-138	V-Belt Deck 21/32 x 50 Lg.	125	03-1030-0000	Thrust Washer 5/16 I.D.
62	754-101	V-Belt Drive 1/2 x 35 Lg.*	126	18-1687-0000	Cam Lever
63	736-921	Spring Lockwasher 1/2" Scr.*	127	06-1029-0000	Compression Spring
64	756-175	Pulley—Transmission	128	05-1033-0000	Push Pin
65	712-116	Hex Elastic Stop Nut 3/8-24 Thread*			

\*For faster service obtain standard nuts, bolts and washers locally. If these items cannot be obtained locally order by part number and size as shown on parts list.

347 Scarlet Red )  
 348 Black ) When ordering parts, if color or finish is important, use  
 312 White ) the appropriate color code shown at left (e.g. Scarlet Red  
 Finish—10057 (347).

The engine is not under warranty by the mower manufacturer. If repairs or service is needed on the engine, please contact your nearest authorized engine service outlet. Check the "Yellow Pages" of your telephone book under "Engines—Gasoline."

Find It Fast  
In The  
"Yellow Pages"



**PARTS LIST FOR MOWER MODEL 132-410-053 CONTINUED**

Ref. No.	Part No.	Description
129	12-1984-0007	Casting Cam Side
130	03-1345-0000	Back Up Disc
131	15-1154-1079	Friction Pads .450 Thick
	15-1154-1049	Friction Pad .250 Thick
132	12-1329-0000	Casting Carrier Side
133	712-158	Hex Locknut
134	11-1764-0000	Bushing 5/16 I.D. x 1/2" Lg.
135	710-378	Hex Hd. Cap Scw.
139	714-868	Key Woodruff #9*
140	732-121	Extension Spring—Idler
141	723-232	Seat Cover (Optional)
174	310-8253	Bearing Housing
175	741-919	Ball Bearing
176	738-129	Shoulder Scr. .489" Dia. x 2.005" Lg.
177	736-105	Belleville Washer
178	732-153	Extension Spring
179	11085	Deck Assembly
180	11537	Deck Belt Guard Plate Ass'y
181	750-142	Spacer .836 I.D. x 1.01 O.D.
182	10150	Blade Spindle Ass'y—Complete
183	714-365	#6 Hi-Pro Key 5/32 x 3/8" Dia.
184	714-388	#61 Hi-Pro Key 3/16 x 3/8" Dia.
185	748-189	Blade Adapter
186	742-127	Blade—25 inch
187	736-217	Spring Lockwasher 3/8" Scr. Heavy Duty
188	710-459	Hex Hd. Cap Scr. 3/8-24 x 1 1/2" Lg. Heat Treated
189	10769	Blade Adapter Kit
190	710-117	Hex Hd. Cap Scr. 5/16-24 x 1" Lg. Heat Treated
191	736-119	Spring Lockwasher 5/16" Scr.*
192	712-267	Hex Nut 5/16-18 Thd.*
193	712-123	Hex Nut 5/16-24 Thd.*
194	711-405	Blade Spindle
195		
196	734-295	Wheel Ass'y for Cutting Deck
197	738-119	Shoulder Bolt .625" Dia. x 1.750" Lg.
198	736-105	Belleville Washer
199	10426	Belt Keeper Assembly
200	736-119	Spring Lockwasher 5/16-18" Scr.*
201	712-267	Hex Nut 5/16-18 Thd.*
202	710-322	Sems Hex Hd. Cap Scr. 5/16-18 x 1.00" Lg.*
203	711-571	Pivot Pin
204	732-261	Torsion Spring
205	11399	Adapter Plate
206	11571	Chute Deflector
207	726-106	Push-on Flange Palnut

\*For faster service obtain standard nuts, bolts and washers locally. If these items cannot be obtained locally order by part number and size as shown on parts list.

347 Scarlet Red )  
 348 Black ) When ordering parts, if color or finish is important, use  
 312 White ) the appropriate color code shown at left (e.g. Scarlet Red  
 Finish—10057 (347).

The engine is not under warranty by the mower manufacturer. If repairs or service is needed on the engine, please contact your nearest authorized engine service outlet. Check the "Yellow Pages" of your telephone book under "Engines—Gasoline."



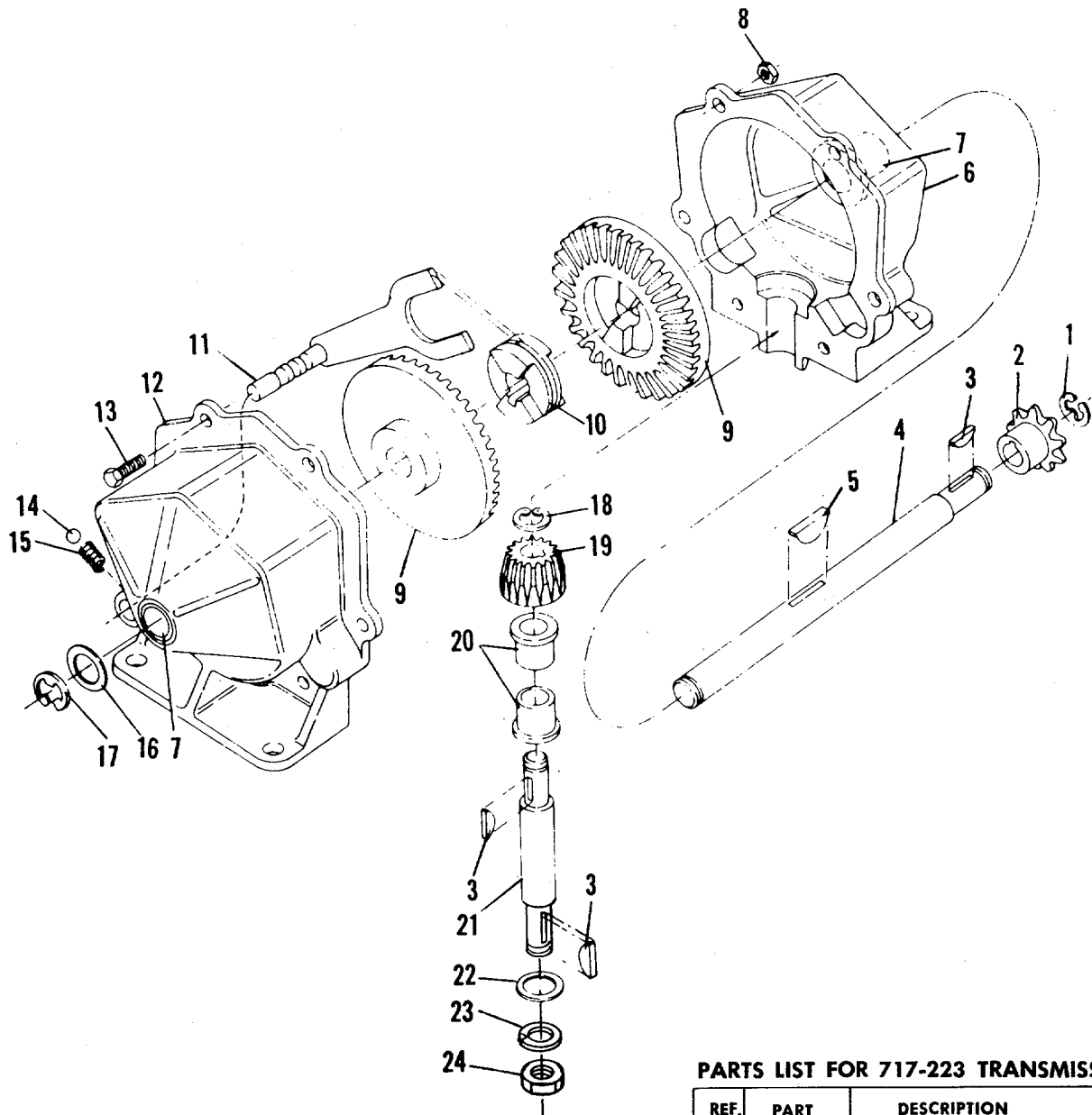
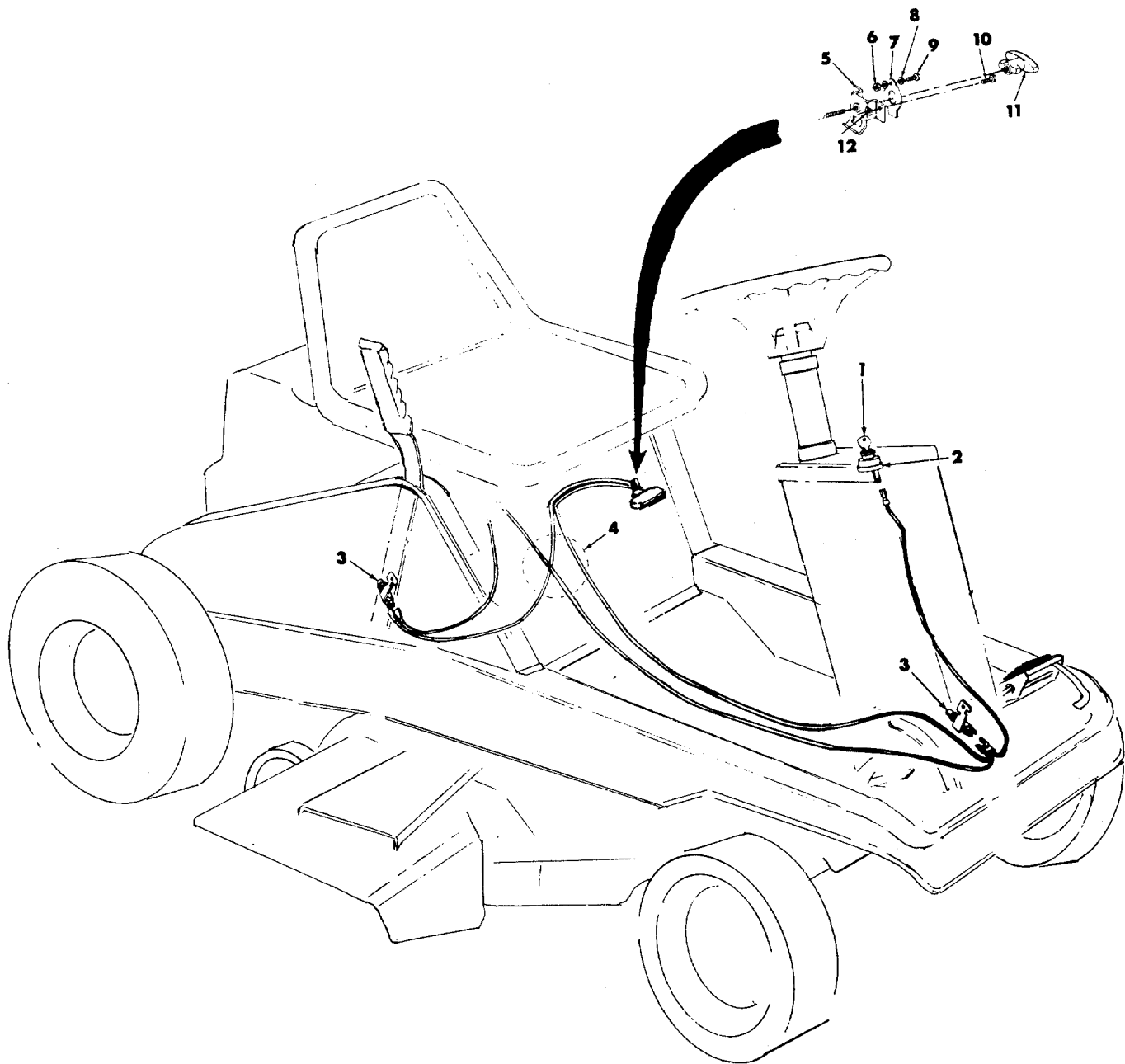


FIGURE 10. MODEL 717-223 TRANSMISSION

PARTS LIST FOR 717-223 TRANSMISSION

REF. NO.	PART NO.	DESCRIPTION
1	716-104	Snap Ring
2	748-852	Sprocket 8T #41
3	714-129	Key Hi-Pro #4
4	711-854	Shaft Output
5	714-126	Key Hi-Pro #606 (Hardened)
6	717-123	Housing Half
7	748-855	Bearing
8	712-117	Locknut 1/4-28 Thd.
9	748-856	Bevel Gear
10	748-857	Clutch Collar
11	310-8583	Detent Shaft Assembly
12	717-124	Housing Half with Detent Hole
13	710-195	Hex Hd. Cap Scr. 1/4-28 x .62
14	741-862	Detent Ball
15	732-863	Detent Spring
16	736-116	Washer
17	716-106	E-ring
18	716-865	Snap Ring #3100-50
19	748-866	Bevel Pinion
20	748-867	Bearing
21	738-159	Pinion Shaft
22	736-192	Washer
23	736-921	Snap Ring 1/2"
24	712-922	Hex Jam Nut 1/2-20 Thd.



**FIGURE 11. RECOIL ELECTRIC SYSTEM**

**PARTS LIST FOR RECOIL START**

Ref. No.	Part No.	Description
1	725-128	Ignition Key
2	725-266	Ignition Switch
3	725-269	Safety Switch
4	725-281	Wire Harness
5	11053	Switch Bracket Ass'y.
6	712-121	Hex Nut #10-24 Thd.*
7	732-257	Switch Spring
8	736-338	Fiber Washer
9	710-425	Truss Hd. Mach. Scr. #10-24 x .62" Lg.*
10	710-351	Truss Hd. Self-Tap Scr. #10 x .50" Lg.
11	11263	Handle—Plastic

GRASS CATCHER Model No. 192-010 is available as optional equipment for the mowers shown in this manual.

**WARNING:**

1. The mower should not be operated without the entire grass catcher or chute deflector in place.
2. The mower should not be operated without the protective shield on the rear of the deck in place.

**NOTE:**

Under normal usage the bag material is subject to deterioration and wear and should be checked for replacement. Be sure that any replacement bag complies with the original manufacturer's specification.

For replacement bags, use only factory authorized replacement bag No. 764-121.

## WARRANTY

For one year from date of purchase, MTD Products Inc will replace for the original purchaser, free of charge, F.O.B. factory or authorized service firm, any part or parts found to be defective in material or workmanship. All transportation charges on parts submitted for replacement under this warranty must be paid by the purchaser. This warranty does not include replacement of parts which become inoperative through misuse, excessive use, accident, neglect, improper maintenance or alterations by unauthorized persons. This warranty does not include the engine, motor, battery, battery charger or any component parts thereof. For service on these units refer to the applicable manufacturer's warranty.

The above warranty will apply only to the original owner and will be effective only if the warranty card has been properly processed. It will not apply where the unit has been used commercially.

Warranty service is available through your local authorized service dealer or distributor. **UNDER NO CIRCUMSTANCES WILL THE RETURN OF A COMPLETE UNIT BE ACCEPTED BY THE FACTORY UNLESS PRIOR WRITTEN PERMISSION HAS BEEN EXTENDED.**

# PARTS INFORMATION

## MOWER, TILLER, SNOW THROWER AND TRACTOR PARTS

Mower, tiller, snow thrower and tractor parts are available through the authorized service firms listed below. All orders should specify the model number of your unit, parts numbers, description of parts and the quantity of each part required.

**A 1 Engine & Mower Co.**  
327 East 9th Street  
Salt Lake City, Utah 84102

**American Electric Ignition Co.**  
124 N. W. 8th Street  
Oklahoma City, Oklahoma 73102

**Auto Electric & Carburetor Co.**  
2625 4th Avenue, S.  
P. O. Box 1948  
Birmingham, Alabama 35233

**Automotive Equipment Service Co.**  
3117 Holmes Street  
Kansas City, Missouri 64109

**Bailey's Rebuild Inc.**  
1325 E. Madison Street  
Seattle, Washington 98102

**Brown Equipment Distributor Inc.**  
110 Beech Street  
Corydon, Indiana 47112

**Bullard Supply**  
2409 Commerce Street  
Houston, Texas 77003

**Center Supply Company**  
6867 New Hampshire Avenue  
Takoma Park, Maryland 20012

**R. T. Clapp Co.**  
2016 Magnolia Ave., N. E.  
Knoxville, Tennessee 37917

**W. B. Clements**  
400 Salem Avenue  
Roanoke, Virginia 24016

**Morton B. Collins Co.**  
300 Birnie Avenue  
Springfield, Massachusetts 01107

**Dixie Sales Company**  
P. O. Box 1408  
327 Battleground Avenue  
Greensboro, North Carolina 27402

**East Point Cycle & Key Shop**  
1617 Whiteway  
East Point, Georgia 30044

**Gamble Distributors**  
West End Avenue  
Carthage, New York 13619

**Garden Equipment Co., Inc.**  
6600 Cherry Avenue  
Long Beach, California 90805

**Henzler, Inc.**  
2015 Lemay Ferry Road  
St. Louis, Missouri 63125

**Frank E. Ives & Son**  
1101 Lincoln Avenue  
Prospect Park, Pennsylvania 19076

**J. W. Jewett Co.**  
981 Folsom Street  
San Francisco, California 94107

**Kenton Supply**  
8216 North Denver Avenue  
Portland, Oregon 97217

**Kimber's Inc.**  
615 W. Genesee Street  
Syracuse, New York 13204

**Marr Brothers**  
423 E. Jefferson  
Dallas, Texas 75203

**Mathews Auto Electric Co.**  
420 East 2nd Street  
Tulsa, Oklahoma 74120

**McClure Lawn & Garden Supply**  
1114 Lexington Avenue  
Mansfield, Ohio 44907

**Memphis Cycle & Supply Co.**  
421 Monroe Avenue  
Memphis, Tennessee 38103

## ENGINE PARTS AND SERVICE

Engine parts and service should be handled by your nearest authorized engine service firm. Check the yellow pages of your telephone directory under the listing *Engines - Gasoline*, Briggs and Stratton or Tecumseh Lauson - Power Products.

**Moz-All of Florida, Inc.**  
365 Greco Avenue  
Coral Gables, Florida 33146

**National Central, Div. of Joe Sterling, Inc.**  
Drawer "D" 687 Seville Rd.  
Wadsworth, Ohio 44281

**Power Equipment Distributor**  
36463 So. Gratiot Avenue  
Mt. Clemens, Michigan 48043

**Parts & Sales Inc.**  
335 West St. Charles Road  
Villa Park, Illinois 60181

**Power Lawn & Garden Equip. Co.**  
2551-2571 J. F. Kennedy Road  
Dubuque, Iowa 52001

**Raub Supply Company**  
James & Mulberry Sts.  
Lancaster, Pennsylvania 17604

**Radco Distributors**  
2403 Market Street  
P. O. Box 3216  
Jacksonville, Florida 32206

**Richmond Battery & Ignition**  
P. O. Box 25369 - 957 Myers St.  
Richmond, Virginia 23260

**Smith Hardware Company**  
515 N. George Street  
Goldsboro, North Carolina 27530

**South Denver Lawn Equip. Co.**  
527 West Evans  
Denver, Colorado 80223

**Suhren Engine**  
8330 Earhart Blvd.  
New Orleans, Louisiana 70118

**Sutton's Lawn Mower Shop**  
Route 4, Box 343  
North Little Rock, Arkansas 72117

**Warner Equipment**  
7520 Lyndale Avenue, So.  
Minneapolis, Minnesota 55423