

OWNER'S MANUAL

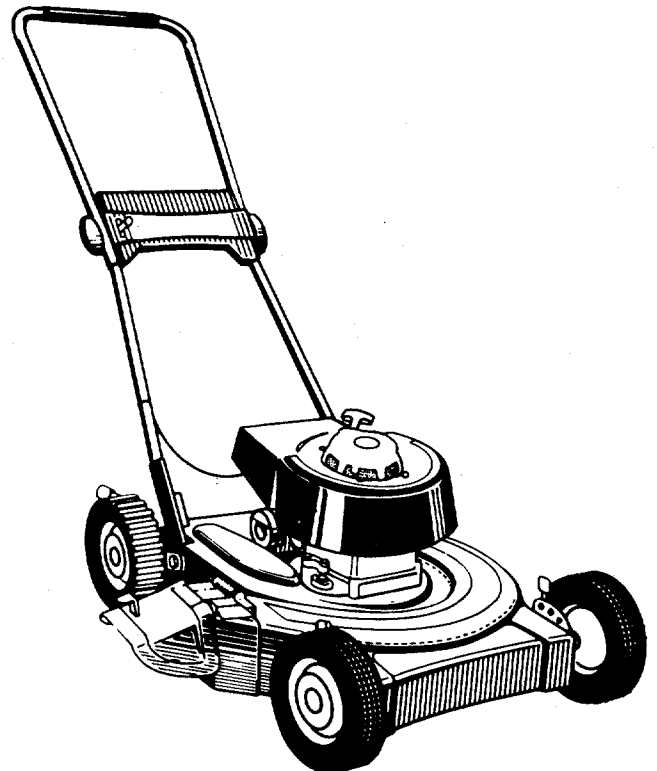
- ASSEMBLY
- OPERATION
- MAINTENANCE
- PARTS LIST

**Model No.
128-280A**

Important:

**Read Safety Rules and
Instructions Carefully**

**21" SELF
PROPELLED
ROTARY
MOWER**



LIMITED WARRANTY

For one year from the date of original retail purchase, MTD PRODUCTS INC will either repair or replace, at its option, free of charge, F.O.B. factory or authorized service firm, any part or parts found to be defective in material or workmanship. Transportation charges under this warranty must be paid by the purchaser unless return is requested by MTD PRODUCTS INC.

This warranty will not apply to any part which has become inoperative due to misuse, excessive use, accident, neglect, improper maintenance, alterations, or unless the unit has been operated and maintained in accordance with the instructions furnished. This warranty does not apply to the engine, motor, battery, battery charger or component parts thereof. Please refer to the applicable manufacturer's warranty on these items.

This warranty will not apply where the unit has been used commercially.

Warranty service is available through your local authorized service dealer or distributor. If you do not know the dealer or distributor in your area, please write to the Customer Service Department of MTD.

The return of a complete unit will not be accepted by the factory unless prior written permission has been extended by MTD.

This warranty gives you specific legal rights. You may also have other rights which vary from state to state.

WARNING TO PURCHASERS OF INTERNAL COMBUSTION ENGINE EQUIPPED MACHINERY OR DEVICES IN THE STATE OF CALIFORNIA

The equipment which you have just purchased does not have a spark arrester. If this equipment is used on any forest covered land, brush covered land, or grass covered unimproved land in the State of California, before using on such land, the California law requires that a spark arrester be provided. In addition, spark arrester is required by law to be in effective working order. The spark arrester must be attached to the exhaust system and comply with Section 4442 of the California Public Resources Code.

IMPORTANT

It is suggested that this manual be read in its entirety before attempting to assemble or operate. Keep this manual in a safe place for future reference and for ordering replacement parts.

This unit is shipped WITHOUT GASOLINE or OIL. After assembly, see operating section of this manual for proper fuel and amount.

Your rotary mower is a precision piece of power equipment, not a plaything. Therefore exercise extreme caution at all times.

SAFE OPERATION PRACTICES FOR WALK-BEHIND MOWERS

TRAINING

1. Read the Operating and Service Owner's Manual carefully. Be thoroughly familiar with the controls and the proper use of the equipment.
2. Never allow children to operate a power mower. Only persons well acquainted with these rules of safe operation should be allowed to use your mower.
3. Keep the area of operation clear of all persons, particularly small children and pets. Stop engine when they are in the vicinity of your mower. Although the area of operation should be completely cleared of foreign objects, a small object may have been overlooked and could be accidently thrown by the mower in any direction.

PREPARATION

1. Thoroughly inspect the area where the equipment is to be used and remove all stones, sticks, wire, bones and other foreign objects which could be picked up and thrown by the mower in any direction.
2. Do not operate equipment when barefoot or wearing open sandals. Always wear substantial footwear.
3. Do not wear loose fitting clothing that could get caught on the mower.
4. Check the fuel before starting the engine. Do not fill the gasoline tank indoors, when the engine is running, or while the engine is still hot. Wipe off any spilled gasoline before starting the engine.
5. Disengage the self-propelled mechanism or drive clutch on units so equipped before starting the engine.
6. Never attempt to make a wheel or cutting height adjustment while the engine is running.
7. Mow only in daylight or in good artificial light.
8. Never operate the equipment in wet grass. Always be sure of your footing; keep a firm hold on the handle and walk, never run.

OPERATION

1. Do not change the engine governor settings or overspeed the engine. Excessive engine speeds are dangerous.
2. Do not put hands or feet near or under rotating parts. Keep clear of the discharge opening at all times.
3. Stop the blade(s) when crossing gravel drive, walks or roads.
4. After striking a foreign object, stop the engine, remove the wire from the spark plug,

thoroughly inspect the mower for any damage, and repair the damage before restarting and operating the mower.

5. If the equipment should start to vibrate abnormally, stop the engine and check immediately for the cause. Vibration is generally a warning of trouble.
6. Stop the engine whenever you leave the mower, before cleaning the mower housing, and when making any repairs or inspections.
7. When cleaning, repairing or inspecting, make certain the blade and all moving parts have stopped. Disconnect the spark plug wire, and keep the wire away from the plug to prevent accidental starting.
8. Before attempting to unclog the mower or discharge chute, stop the engine and be sure the blade(s) have stopped completely. Disconnect the spark plug wire and keep the wire away from the plug to prevent accidental starting.
9. Do not run the engine indoors.
10. Shut the engine off and wait until the blade comes to a complete stop before removing the grass catcher.
11. Mow across the face of slopes, never up-and-down. Exercise extreme caution when changing direction on slopes. Do not mow excessively steep slopes.
12. Always disconnect electric mowers (line operated) before cleaning, repairing or adjusting.
13. Never operate mower without proper guards, plates or other safety protective devices in place.
14. Keep washout ports and other mower-housing service openings closed when mowing.

MAINTENANCE AND STORAGE

1. Check the blade and engine mounting bolts at frequent intervals for proper tightness.
2. Keep ail nuts, bolts, and screws tight to be sure the equipment is in safe working condition.
3. Never store the equipment with gasoline in the tank inside of a building where fumes may reach an open flame or spark. Allow the engine to cool before storing in any enclosure.
4. To reduce fire hazard, keep the engine free of grass, leaves, or excessive grease.
5. Check the grass catcher bag frequently for wear or deterioration. For safety protection replace only with new bag meeting original equipment specifications.

ASSEMBLY INSTRUCTIONS

HANDLE ASSEMBLY

1. Remove the loose hardware from the assembly pack. You will need a screwdriver and a 5/16" wrench, either a socket as shown in figure 1 or an open end wrench.

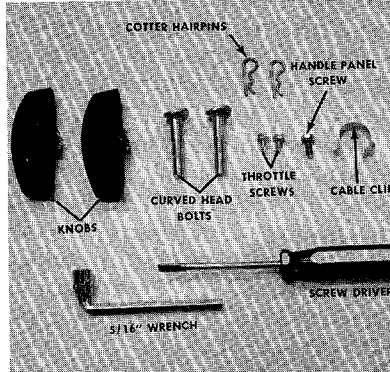


FIGURE 1.
LOOSE HARDWARE AND TOOLS

2. Assemble the lower handle to the handle brackets as shown in figure 2.
3. Secure the handle with cotter hairpins on both sides. See figure 2.

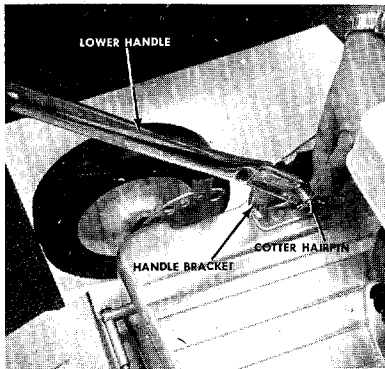


FIGURE 2.
LOWER HANDLE ASSEMBLY

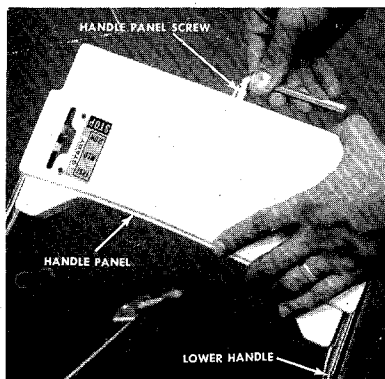


FIGURE 3.
HANDLE PANEL ASSEMBLY

4. Place the handle panel over the lower handle and fasten with the handle panel screw using a 5/16" wrench. See figure 3.
5. Place the upper handle over the lower handle and line up the holes as shown in figure 4.
6. Insert the curved head bolt from the inside and tighten the knob by hand. See figure 4.

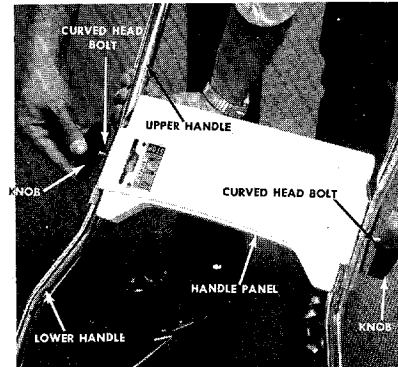


FIGURE 4.
UPPER HANDLE ASSEMBLY

7. Place the throttle control in the handle panel and assemble it with two throttle screws using a screwdriver. See figure 5.
8. Use the cable ties to fasten the throttle control wire to the lower handle. Cut off end.
9. Check ALL nuts and bolts for correct tightness.

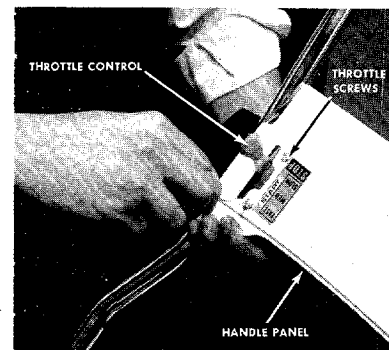


FIGURE 5.
THROTTLE CONTROL ASSEMBLY

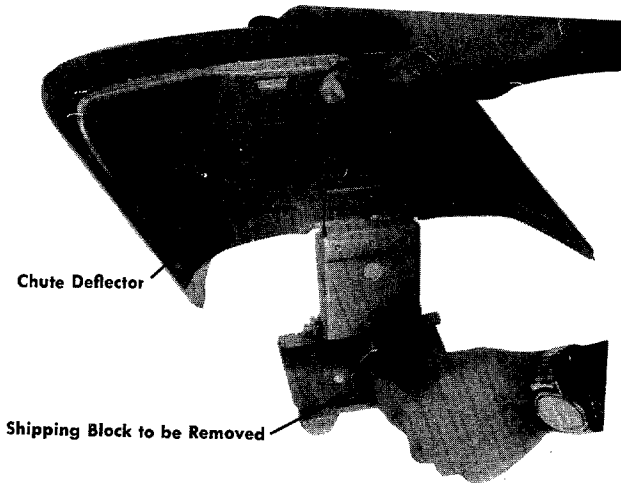
➔ NOTE

It may be necessary to spread the ends of the lower handle outward slightly to assure a snug fit against the bracket mounting area.



CAUTION

Please note that the chute deflector on your mower is in an upright position. It is held in that position by a shipping block. This block is used for shipping purposes only. It must be removed and discarded before your mower is put into operation.



START ENGINE

With the throttle control lever conveniently mounted on the handle, start, fast, slow and stopping of the engine is conveniently controlled with one lever.

After the engine has been properly fueled and oiled (refer to engine operating and maintenance instructions) start engine in the following manner.

RECOIL STARTER

1. Move throttle control lever to "START" position.
2. Crank engine, pull recoil with a quick firm pull. Do not pull out so far that rope stops with a jerk as this will cause rope failure. Do not allow rope and handle to snap back into place.
3. After two or three full firm pulls on recoil, or as soon as engine fires, move throttle control to run position.
4. Operate a new engine at intermediate speeds and light load for the first few hours as you would a new automotive engine.
5. To stop engine, move speed control lever to stop position.
6. If carburetor needs adjustment to start or for operation, see "Carburetor Readjustment" section.



NOTE

A brief break-in period is essential to insure maximum engine life. This consists of running the engine at half-speed for a period of time required to use one tank of gasoline. This is necessary on the initial run only. It is also recommended that the oil be changed after five (5) hours of operation. This allows for the removal of impurities which may have accumulated during the break-in period. Subsequent oil changes should be made as stated in the engine manual. Always check oil before using your mower. Be sure crankcase is full.

ADJUSTMENTS



CAUTION

Do not at any time make any adjustment to lawn mower without first stopping engine and disconnecting spark plug wire.



NOTE

For shipping purposes your mower is set with the wheels in a low cutting height position. For best results raise the cutting height position until it is determined which height is best for your lawn.

1. CUTTING HEIGHT

An adjusting plate and thumb lever at each wheel position provides cutting height adjustment. Each adjusting plate has five holes. Height of cut will be changed when the thumb lever is moved from one hole to another. Simply depress thumb lever towards wheel and move wheel and lever assembly to desired position. All wheels must be positioned in relative height of cut positions.

2. BELT

The belt requires no adjustment. The idler maintains the proper tension on the belt at all times.

3. THROTTLE

If adjustment becomes necessary, the throttle control wire assembly can be reset as follows:

- a. Loosen, but do not remove, screw securing throttle control wire assembly at engine.

- b. Move throttle control lever on handle to "FAST" position.
- c. Move lever, to which control wire is fastened at engine, to full open position and retighten screw to secure throttle control wire assembly.

USING YOUR ROTARY MOWER

For best results, do not cut wet grass because it tends to stick to the underside of the mower thus preventing proper discharge of grass clippings. If wet grass must be cut, reduce walking speed to help distribute the clippings more effectively.

LUBRICATION



Always stop engine and disconnect spark plug wire before cleaning, lubricating or doing any kind of work on lawn mower.

Engine—Follow engine manual for lubrication instructions.



FILL AND DRAIN OIL FROM OIL FILL PLUG.

Always disconnect spark plug cable during repairs, refueling or changing oil. Engine oil may be drained through oil filler opening by tilting the mower on its side. Change oil after first 5 hours of operation while engine is warm. Thereafter, change oil every 25 hours of operation while engine is warm.

Chain—Lubricate periodically with light engine oil (SAE No. 10 or 20).

Controls—Lubricate periodically the control assemblies and conduit wire with light engine oil for ease of operation.

Wheels—Front wheel bearings are of self-lubricating Fortiflex. They require no lubrication. Rear drive wheels are equipped with sintered bearings. Lubricate at least once a season with light oil.

Protective Shield—The pivot points on the protective shield should be lubricated periodically with light oil to prevent any rust or binding.

Chute Deflector—The torsion spring and pivot point should be lubricated periodically with light oil to prevent any rust or binding. Deflector must work freely.

Cutting Blade—The blade may easily be removed for grinding or replacement as follows:

1. Remove bolt and lockwasher holding blade and blade adapter to engine crankshaft.
2. Remove blade and blade adapter from engine crankshaft.
3. Remove two bolts, lockwashers and nuts holding blade to blade adapter (if necessary).

When sharpening blade, follow the original angle of grind as a guide. It is extremely important that each cutting edge receives an equal amount of grinding to prevent an unbalanced blade. An unbalanced blade will cause excessive vibration when rotating at high speeds and may cause damage to the mower.

To insure safe operation of your unit, ALL nuts and bolts must be checked periodically for correct tightness.

Deck—The underside of the mower deck should be cleaned after each period of use as grass clippings, leaves, dirt and other matter will accumulate. This accumulation of grass clippings, etc., is undesirable as it will invite corrosion and may cause an uneven discharge of grass clippings at the next cutting.

The deck may be cleaned by tilting the mower forward or on its side and scraping clean with a suitable tool or by washing with a stream of water from a garden hose.



Do not direct the stream of water at a hot engine, as damage to the engine may result.

BELT REMOVAL

(Refer to drawing on page 8.)

1. Be sure spark plug wire is removed from spark plug.
2. Remove the belt guard (Ref. No. 85) by removing the two screws on the belt guard.
3. Place a piece of plastic film under gas cap and tighten it. The plastic prevents gasoline from draining from the air vent in the cap.

4. Place the handle of mower on a table or bench so that the underside of deck is showing.
5. Remove cutting blade (Ref. No. 36) by removing blade bolt (Ref. No. 38).
6. Remove deck (Ref. No. 31) by removing four bolts (Ref. No. 32).



NOTE

If you have a grass catcher adapter plate on your unit, remove only one bolt, one towards the front wheels.

7. Remove master link and chain (Ref. No. 59).
8. Remove rear wheel hub cap (Ref. No. 69) from right hand rear wheel only.
9. Remove cotter pin, ratchet (Ref. No. 70) and right hand rear wheel (Ref. No. 63).
10. Remove spring (Ref. No. 57) from cam assembly (Ref. No. 91).
11. Remove hex nut (Ref. No. 12) from rear axle assembly (Ref. No. 82) on the right hand side only.
12. Remove cotter pin from axle assembly (Ref. No. 82).
13. Pull idler assembly (Ref. No. 87) toward you and pull belt (Ref. No. 25) over idler.
14. Slide axle assembly (Ref. No. 82) to the left.
15. Pull belt down past P.T.O. pulley (Ref. No. 26) and over end of rear axle assembly (Ref. No. 82).
16. To replace with new belt, reverse the above steps.

STORAGE

The following steps should be taken to prepare lawn mower for storage:

1. Clean and lubricate mower thoroughly as described in the preceding instructions.
2. Refer to engine manual for correct engine storage instructions.
3. Coat mower's cutting blade with chassis grease to prevent rusting.
4. Store mower in dry, clean area.

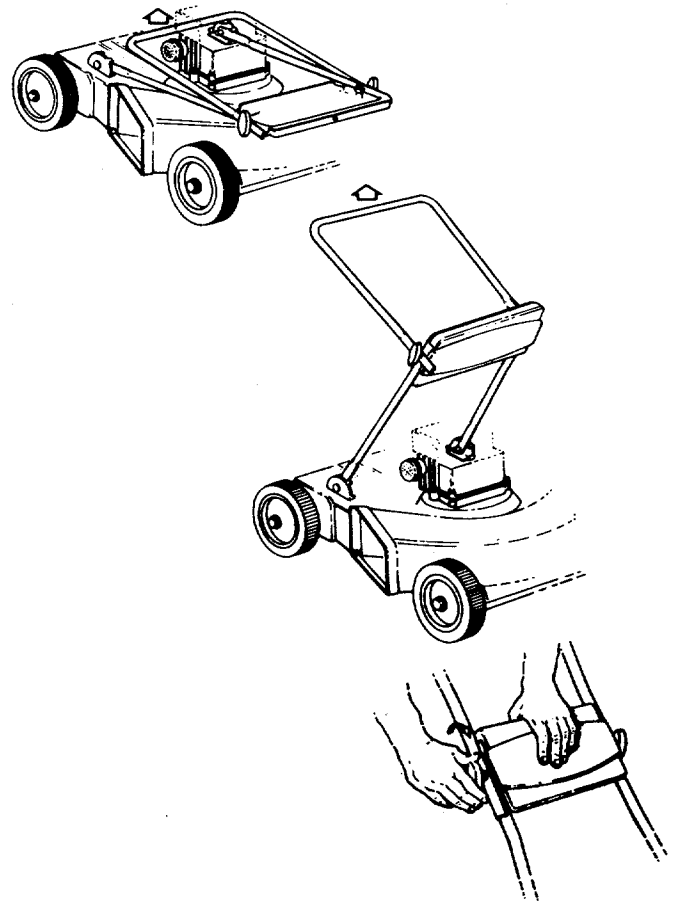
HANDLE STORAGE

This model is so equipped to provide easy fold away handle storage.

1. Loosen the two plastic knobs on each side, center of handle.
2. Pull outward on the bottom of each side of the lower handle and push forward.
3. Fold the upper handle back and down.

To Take the Handle out of Storage Position.

1. Lift the upper handle up and towards the rear.
2. Pull the handle back until it **locks** into the operator's position.
3. Tighten the two plastic knobs securely.



 **NOTE**

The manufacturer **DOES NOT** recommend the use of any accessory on this Rotary Mower other than those manufactured by MTD Products Inc.

GRASS CATCHER Model No. 198-003A is available as optional equipment for the mowers shown in this manual.



1. The mower should not be operated without the entire grass catcher or chute deflector in place.
2. The mower should not be operated without the protective shield on the rear of the deck in place.

 **NOTE:**

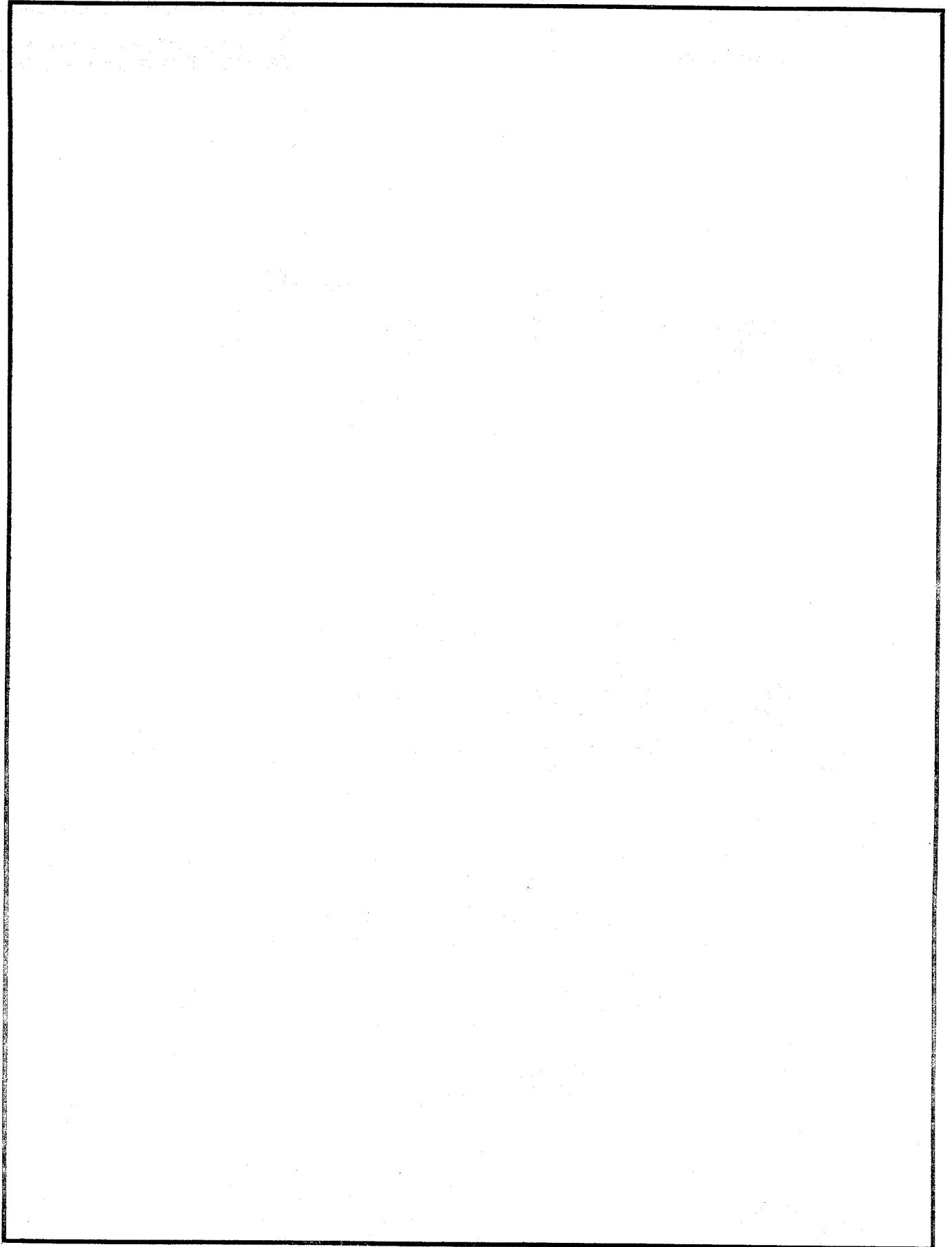
Under normal usage bag material is subject to wear and should be checked periodically. Be sure any replacement bag complies with the mower manufacturer's recommendations.

For replacement bags, use only factory authorized replacement bag No. 764-0119.

 **IMPORTANT**

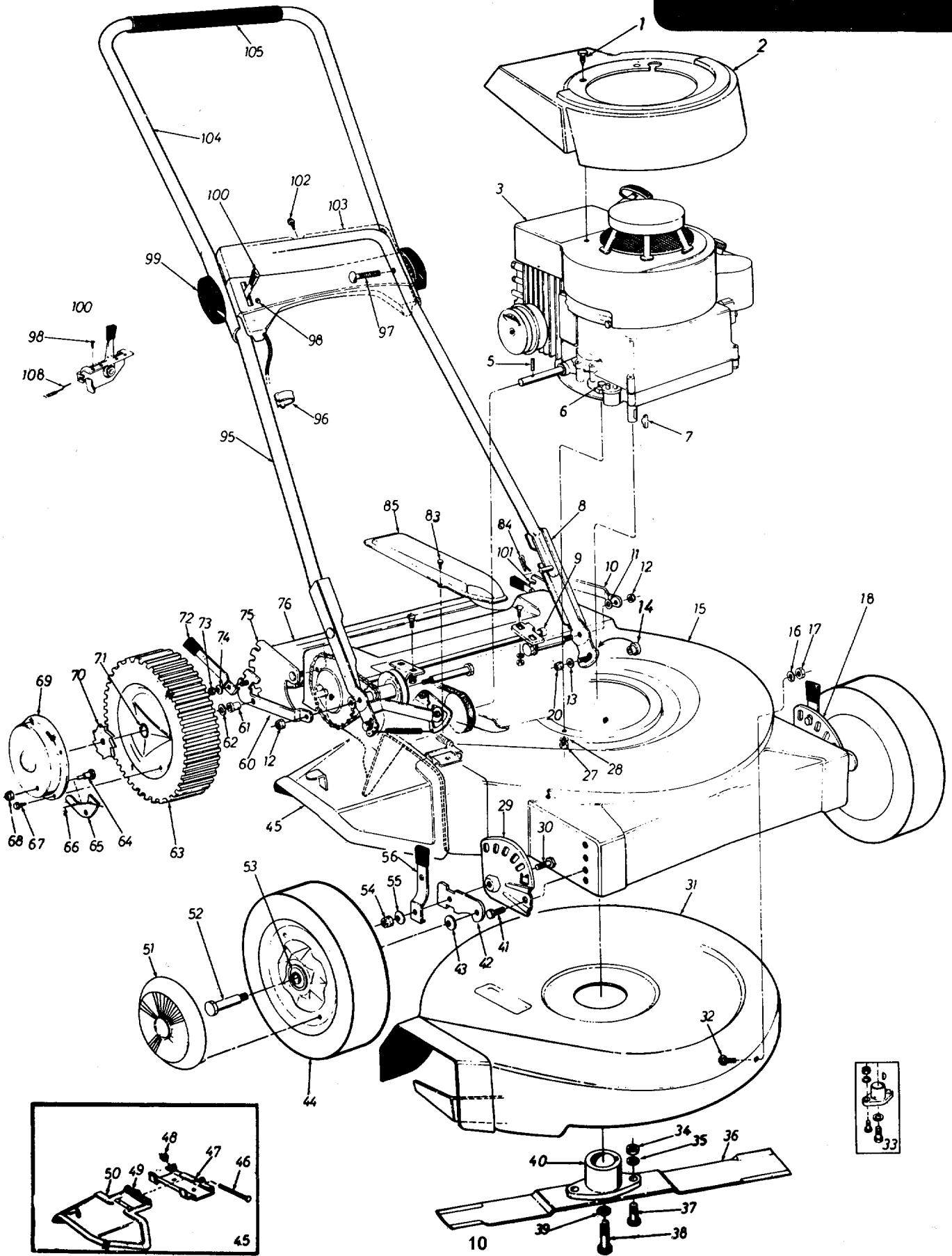
After striking a foreign object, stop the engine, remove wire from spark plug. Thoroughly inspect the mower for any damage, and repair the damage before restarting and operating the mower.

NOTES




128-280A

IF YOU WRITE TO US ABOUT THIS ARTICLE
OR IF YOU ORDER REPLACEMENT PARTS AL-
WAYS MENTION THIS MODEL & SERIAL NO
MODEL



PARTS LIST FOR MODEL 128-280A


REF. NO.	PART NO.	COLOR CODE	DESCRIPTION	NEW PART	REF. NO.	PART NO.	COLOR CODE	DESCRIPTION	NEW PART
1	710-0227		Slot Hex Hd. Self Extr. Scr. #8 x .38" Lg.*		49	732-0253		Torsion Spring	
2	731-0275		Engine Shroud		50	11141	-463	Chute Deflector Ass'y.	
3	—		Engine		51	731-0124		Hub Cap	
5	715-0105		Spring Pin Spiral 3/16" Dia. x 1.50" Lg.		52	738-0102		Shoulder Scr. .498" Dia. x 1.450	
6	710-0158		Hex Scr. 5/16-24 x 1.25" Lg.*		53	741-0178		Fortiflex Bearing	
7	714-0365		#6 Hi-Pro Key 5/32" x 5/8" Dia.		54	712-0116		Hex Ins. L-Nut 3/8-24 Thd.	
8	12623		Handle Ext. Ass'y.		55	736-0219		Belleville Washer	
9	748-0141		Sleeve Bearing .630 I.D.		56	10949		Spring Lever Ass'y. with Knob	
10	10638		Pivot Brkt. Ass'y.—L.H.		60	10639		Pivot Brkt. Ass'y.—R.H.	
11	736-0219		Belleville Wash. .400 I.D. x 1.13 O.D.		61	748-0142		Flange Bearing	
12	712-0267		Hex Nut 5/16-18 Thd.*		62	736-0192		Fl. Wash. .531 I.D. x .93 O.D.	
13	736-0159		Fl. Wash. .344 I.D. x .88 O.D.		63	734-0538		Rear Wheel Ass'y.—Comp.	
14	748-0233		Shoulder Spacer		64	738-0137		Shoulder Scr. .342" Dia. x .268" Lg.	
15	11427	-463	Deck Ass'y.		65	748-0188		Pawl	
16	736-0119		L-Wash. 5/16" Scr.*		66	10622		Nylon Spring	
17	712-0267		Hex Nut 5/16-18" Thd.*		67	710-0227		Slot Hex Hd. Self Extr. Scr. #8 x .38" Lg.*	
18	10950		Height Adj. Ass'y.—L.H.		68	712-0324		Hex Ins. L-Nut 1/4-20 Thd.	
19	10951		Height Adj. Ass'y.—R.H.		69	10647		Hub Cap—Rear	
20	712-0158		Hex Center L-Nut 5/16-18 Thd.		70	748-0187		Ratchet—Rear Wheel	
27	712-0123		Hex Nut 5/16-24 Thd.*		71	748-0125		Sleeve Bearing	
28	736-0119		L-Wash. 5/16" Scr.*		72	10530		Spring Lever Ass'y. with Knob	
29	10934		Index Plate Ass'y.—R.H.		73	712-0342		Hex Jam Nut 3/8-16 Thd.*	
30	—		Weld Scr.—Part of Ref. No. 29		74	736-0105		Belleville Washer	
31	11695	-463	Lower Deck Ass'y.		75	10642		Index Plate Ass'y.—R.H.	
32	710-0260		Carriage Bolt 5/16-18 x .62" Lg.*		76	12250	-463	Rear Protective Shield Ass'y.—Comp.	
33	10769		Blade Adapter Kit		83	710-0224		Hex AB-Tapp Scr. #10 x .50" Lg.	
34	712-0123		Hex Nut 5/16-24 Thd.*		84	714-0104		Internal Cotter Pin 5/16" Dia.	
35	736-0119		L-Wash. 5/16" Scr.*		85	10645	-463	Belt Cover	
36	742-0124		21" Blade		95	10970		Lower Handle	
37	710-0117		Hex Scr. 5/16-24 x 1.00" Lg. H.T.		96	726-0178		Cable Tie	
38	710-0459		Hex Scr. 3/8-24 x 1.50" Lg. H.T.		97	710-0405		Curved Carriage Bolt 5/16-18 x 1.75" Lg.	
39	736-0217		L-Wash. 3/8" Scr. Heavy Duty		98	710-0227		Slot Hex Hd. Self Extr. Scr. #8 x .38" Lg.*	
40	10769		Blade Adapter Kit		99	09966		Handle Knob Ass'y.	
41	710-0209		Hex Sems Scr. 3/8-16 x .62" Lg.*		100	746-0210		Throttle Control Ass'y.—Comp.	
42	10937		Wheel Pivot Bar		101	10641		Index Plate Ass'y.—L.H.	
43	736-0105		Belleville Washer		102	710-0148		Hex Wash. Hd. F-Tapp Scr. #8-32 x .38" Lg.*	
44	734-0845		Front Wheel Ass'y.—Comp.	N	103	11606	-463	Handle Panel	
45	11679	-463	Chute Deflector—Comp.		104	10011		Upper Handle	
46	711-0555		Pivot Pin		105	718-0143		Grip	
47	11130	-463	Adapter Plate		108	746-0231		Conduit and Wire	
48	726-0106		Push Nut 1/4" Rod						

 **NOTE**

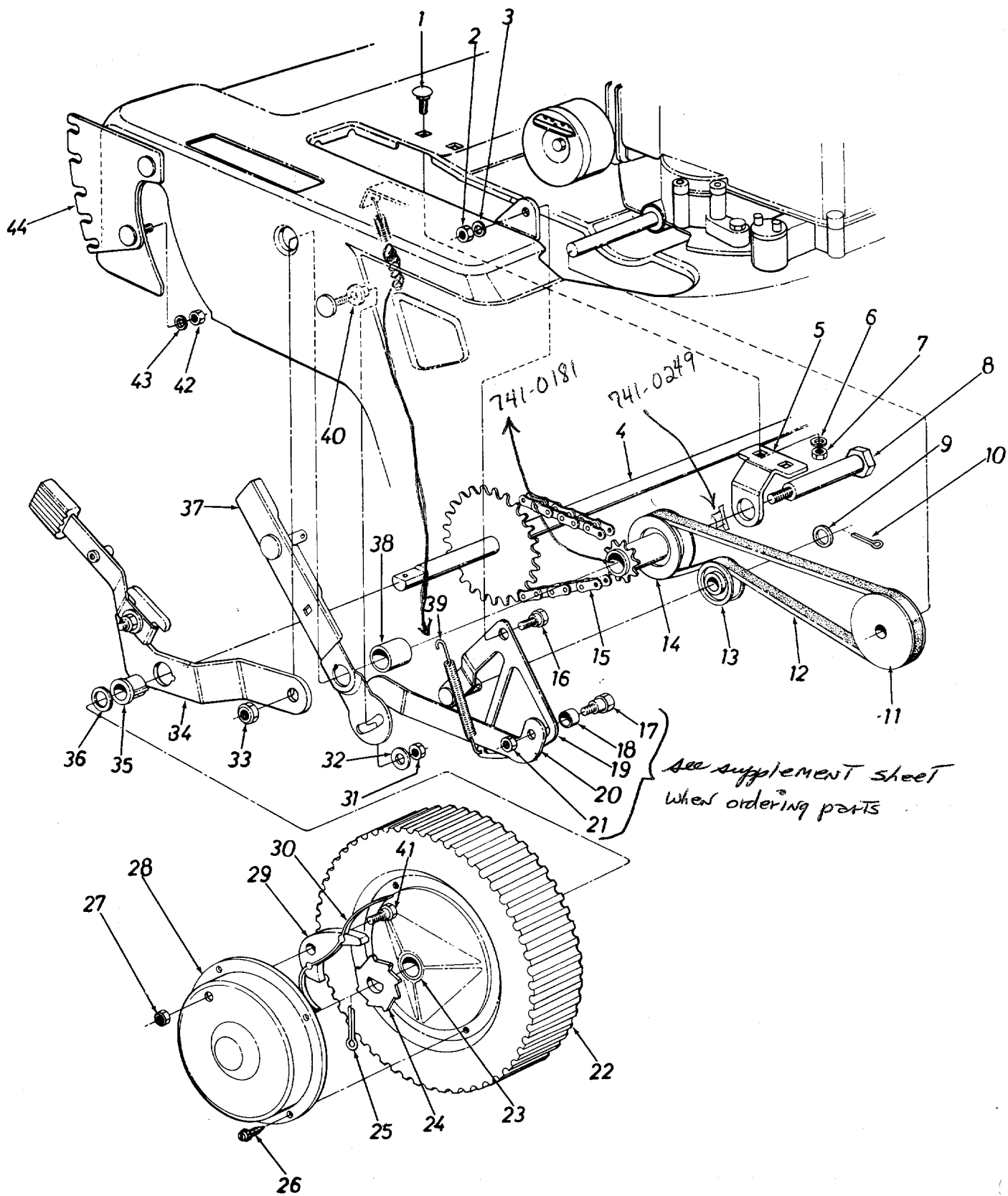
This instruction manual covers various models and all specifications shown do not necessarily apply to your model. Specifications subject to change without notice or obligation.

NOTE: The engine is not under warranty by the mower manufacturer . . . If repairs or service is needed on the engine, please contact your nearest authorized engine service outlet. Check the "Yellow Pages" of your telephone book under "Engines—Gasoline."

**Find It Fast
In The
Yellow Pages**



128-280A



PARTS LIST FOR MODEL 128-280A

REF. NO.	PART NO.	COLOR CODE	DESCRIPTION	NEW PART	REF. NO.	PART NO.	COLOR CODE	DESCRIPTION	NEW PART
1	710-0260		Carriage Bolt 5/16-18 x .62" Lg.*		22	734-0538		Rear Wheel Ass'y. Comp.	
2	712-0267		Hex Nut 5/16-18 Thd.*		23	748-0125		Sleeve Bearing	
3	736-0119		L-Wash. 5/16" Scr.*		24	748-0187		Ratchet—Rear Wheel	
4	10646		Rear Shaft Ass'y.		25	714-0115		Cotter Pin 1/8" Dia. x 1.00" Lg.*	
5	10644 —463		Bracket		26	710-0227		Slot Hex Hd. Self Extr. Scr. #8 x .38" Lg.	
6	736-0119		L-Wash. 5/16" Scr.*		27	712-0324		Hex Ins. L-Nut 1/4-20 Thd.	
7	712-0267		Hex Nut 5/16-18 Thd.*		28	10647		Hub Cap—Rear	
8	738-0136		Shld. Scr. .625" Dia. x 3.380" Lg.		29	748-0188		Pawl	
9	736-0160		Fl. Wash. .531 I.D. x .930 O.D.		30	10622		Nylon Spring	
10	714-0115		Cotter Pin 1/8" Dia. x 1.00" Lg.*		31	712-0158		Hex Ctr. L-Nut 5/16-18 Thd.	
11	756-0115		Engine Pulley		32	736-0159		Fl. Wash. .344 I.D. x .88 O.D.	
12	754-0114		V-Belt 1/2" x 24" Lg.		33	712-0267		Hex Nut 5/16-18 Thd.*	
13	756-0192		Plastic Flat Idler		34	10639		Pivot Bracket Ass'y.—R.H.	
14	756-0191		Pulley with 9 Tooth Sprkt. Ass'y.		35	748-0142		Flange Bearing	
15	713-0144		#48 Chain 1/2" Pitch x 31 Links		36	736-0192		Fl. Wash. .531 I.D. x .93 O.D.	
	713-0122		#48 Master Link 1/2" Pitch		37	12624		Pivot Arm Ass'y.	
16	738-0140		Shld. Scr. .437" Dia. x .180		38	748-0192		Spacer .635 I.D. x .890 O.D. x .80 Lg.	
17	738-0141		Shld. Scr. .437" Dia. x .350		39	732-0265		Spring 3/8" O.D. x 3.17" Lg.	
18	750-0122		Sleeve .450 I.D. x .565 O.D.		40	748-0233		Shoulder Spacer	
19	11920		Cam Ass'y.		41	738-0137		Shld. Scr. .342" Dia. x .268" Lg.	
20	12624		Pivot Arm Ass'y.		42	712-0267		Hex Nut 5/16-18 Thd.*	
21	712-0158		Hex Ctr. L-Nut 5/16-18 Thd.		43	736-0119		L-Wash. 5/16" Scr.*	
					44	10642		Index Plate Ass'y.—R.H.	

*For faster service obtain standard nuts, bolts and washers locally. If these items cannot be obtained locally, order by part number and size as shown on parts list.

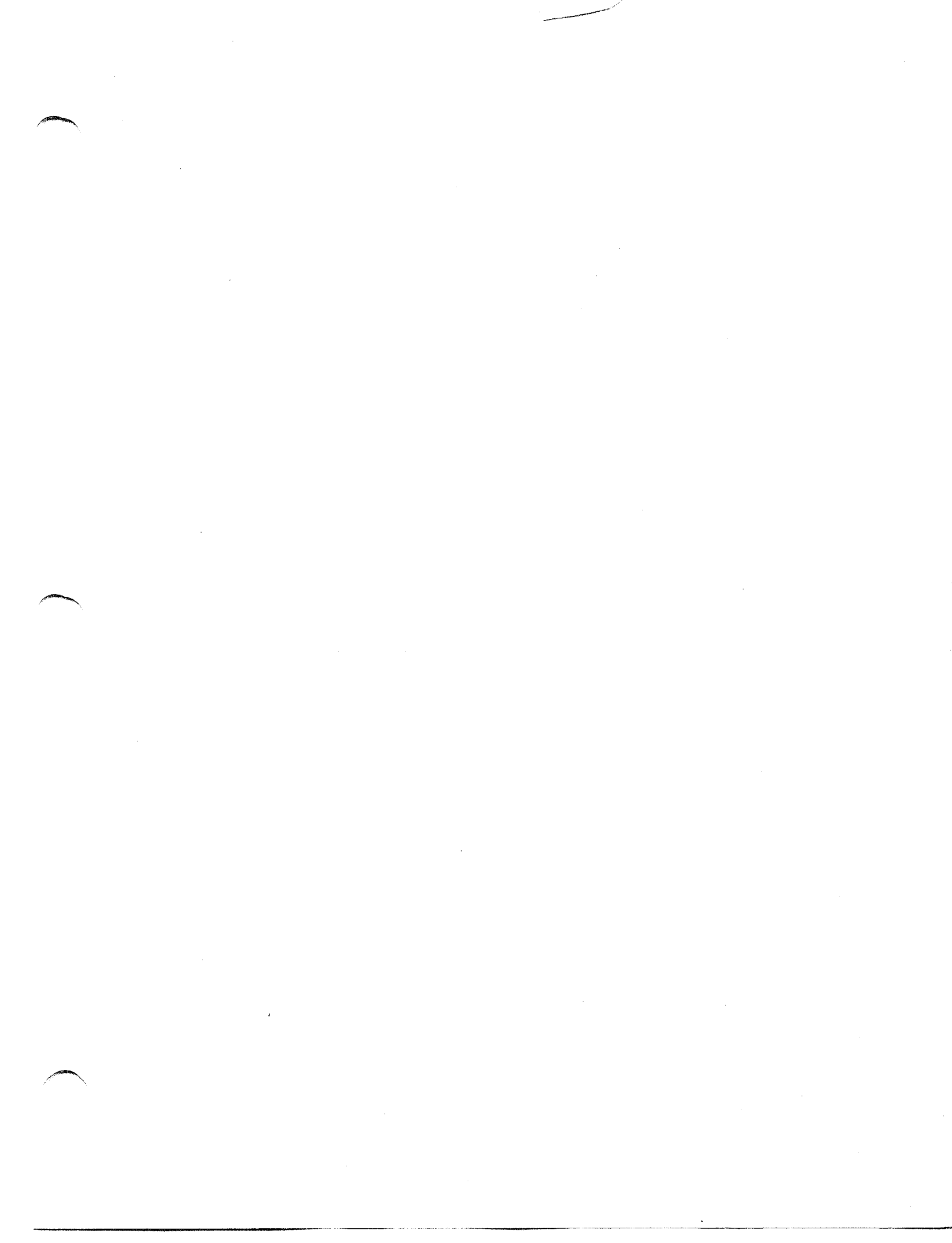
(463—Top Flite Red)

When ordering parts, if color or finish is important use the appropriate color code shown above (e.g. Top Flite Red Finish—11427 (463).)

The engine is not under warranty by the mower manufacturer. If repairs or service is needed on the engine, please contact your nearest authorized engine service outlet. Check the "Yellow Pages" of your telephone book under "Engines — Gasoline."







PARTS INFORMATION

POWER EQUIPMENT PARTS AND SERVICE

Parts and service for all MTD manufactured power equipment are available through the authorized service firms listed below. All orders should specify the model number of your unit, parts number, description of parts and the quantity of each part required.

ALABAMA	BIRMINGHAM	
Auto Electric & Carburetor Co.	2625 4th Ave. S.	35233
ARKANSAS	NORTH LITTLE ROCK	
Sutton's Lawn Mower Shop	Rt. 4, Box 368	72117
	FORT SMITH	
Mity Mite Motors, Inc.	2515 Towson Ave.	72901
CALIFORNIA	PORTERVILLE	
Billious	75 North D Street	93257
	SAN BERNARDINO	
Lawn Mower Supply Co.	25608 E. Baseline	92410
	SAN FRANCISCO	
J.W. Jewett Co.	981 Folsom St.	94107
	SACRAMENTO	
Luttig & Severson	2030 28th St.	95818
COLORADO	DENVER	
South Denver Lawn Equip.	527 West Evans	80223
CONNECTICUT	SUFFIELD	
The Jones & Ramsey Co.	850 Thompsonville Rd.	06078
FLORIDA	JACKSONVILLE	
Radco Distributors	2403 Market St.	32206
	CORAL GABLES	
Moz-All of Florida, Inc.	365 Greco Ave.	33146
GEORGIA	EAST POINT	
East Point Cycle & Key	2834 Church St.	30344
ILLINOIS	LYONS	
Keen Edge Co.	8615 Ogden Ave.	60534
INDIANA	ELKHART	
Parts & Sales Inc.	2101 Industrial Pkwy.	46514
IOWA	DUBUQUE	
Power Lawn & Garden Equip.	2551 J.F. Kennedy	52001
LOUISIANA	NEW ORLEANS	
Suhren Engine Co.	8330 Earhart Blvd.	70118
MARYLAND	TAKOMA PARK	
Center Supply Co.	6867 New Hampshire Ave.	20012
MASSACHUSETTS	SPRINGFIELD	
Morton B. Collins Co.	300 Birnie Ave.	01107
MICHIGAN	MOUNT CLEMENS	
Power Equipment Dist.	36463 South Gratiot	48043
	LANSING	
Lorenz Service Co.	2500 S. Pennsylvania	48900
MINNESOTA	MINNETONKA	
Hance Distributing Inc.	11212 Wayzata Blvd.	55343
MISSISSIPPI	BILOXI	
Biloxi Sales & Service, Inc.	506 Caillavet St.	39533
MISSOURI	KANSAS CITY	
Automotive Equip. Service	3117 Holmes St.	64109
	ST. LOUIS	
Henzler, Inc.	2015 Lemay Ferry Rd.	63125
NEW JERSEY	BELLMAWR	
Lawnmower Parts Inc.	717 Creek Rd., P.O. Box 7	08030

BRIGGS & STRATTON, TECUMSEH AND PEERLESS PARTS AND SERVICE

Briggs & Stratton, Tecumseh and Peerless parts and service should be handled by your nearest authorized engine service firm. Check the yellow pages of your telephone directory under the listing **Engines—Gasoline**, Briggs & Stratton or Tecumseh Lauson.

NEW YORK	CARTHAGE	
Gamble Dist., Inc.	West End Ave.	13619
NORTH CAROLINA	GREENSBORO	
Dixie Sales Company	327 Battleground Ave.	27402
	GOLDSBORO	
Smith Hardware Co.	515 N. George St.	27530
OHIO	WADSWORTH	
National Central	687 Seville Rd.	44281
	CLEVELAND	
Bleckrie, Inc.	7900 Lorain Ave.	44102
	CARROLL	
Stebe's Mid-State Mower Supply	Box 366	43112
	WILLARD	
Sunshine Wholesale Tire Outlet	Route 224	44890
OKLAHOMA	MUSKOGEE	
Victory Motors, Inc.	605 S. Cherokee	74401
	ADA	
Ada Auto Supply	301 E. 12th St.	74820
OREGON	PORTLAND	
Kenton Supply Co.	8216 N. Denver Ave.	97217
PENNSYLVANIA	LANCASTER	
Raub Supply Co.	James & Mulberry Sts.	17604
	PITTSBURGH	
Bluemont Co.	11125 Frankstown Rd.	15235
TENNESSEE	KNOXVILLE	
Master Repair Service	2423 Broadway, N.E.	37917
	MEMPHIS	
Memphis Cycle & Supply Co.	421 Monroe Ave.	38103
American Sales & Service, Inc.	1922 Lynnbrook	38116
TEXAS	DALLAS	
Marr Brothers, Inc.	423 E. Jefferson	75203
	HOUSTON	
Bullard Supply Co.	2409 Commerce St.	77003
	SAN ANTONIO	
Catto & Putty, Inc.	P.O. Box 2408	78206
	FORT WORTH	
Woodson Sales Corp.	1702 N. Sylvania	76111
UTAH	SALT LAKE CITY	
A-1 Engine & Mower Co.	437 E. 9th St.	84111
VERMONT	BURLINGTON	
Vermont Appliance Co.	44 Lakeside Ave.	05401
VIRGINIA	RICHMOND	
RBI Corp.	963 Myers St.	23260
WASHINGTON	SEATTLE	
Bailey's Rebuild, Inc.	1325 E. Madison St.	98102
WEST VIRGINIA	CHARLESTON	
Young's, Inc.	233 Virginia St., E.	25301
WISCONSIN	APPLETON	
Automotive Supply Co.	123 S. Linwood Ave.	54911

WARRANTY PARTS AND SERVICE POLICY

The purpose of warranty is to protect the customer from defects in workmanship and materials, defects which are NOT detected at the time of manufacture. It does not provide for the unlimited and unrestricted replacement of parts. Use and maintenance are the responsibility of the customer. The manufacturer cannot assume responsibility for conditions which it has no control. Simply put, if it's the manufacturer's fault, it's the manufacturer's responsibility; if it's the customer's fault, it's the customer's responsibility.

CLAIMS AGAINST THE MANUFACTURER'S WARRANTY INCLUDES

1. Replacement of Missing Parts on new equipment.
2. Replacement of Defective Parts within the warranty period.
3. Repair of Defects within the warranty period.

All claims MUST be substantiated with the following information:

1. Model Number of unit involved.
2. Date unit was purchased or first put into service.
3. Date of failure.
4. Nature of failure.