

# OWNER'S MANUAL

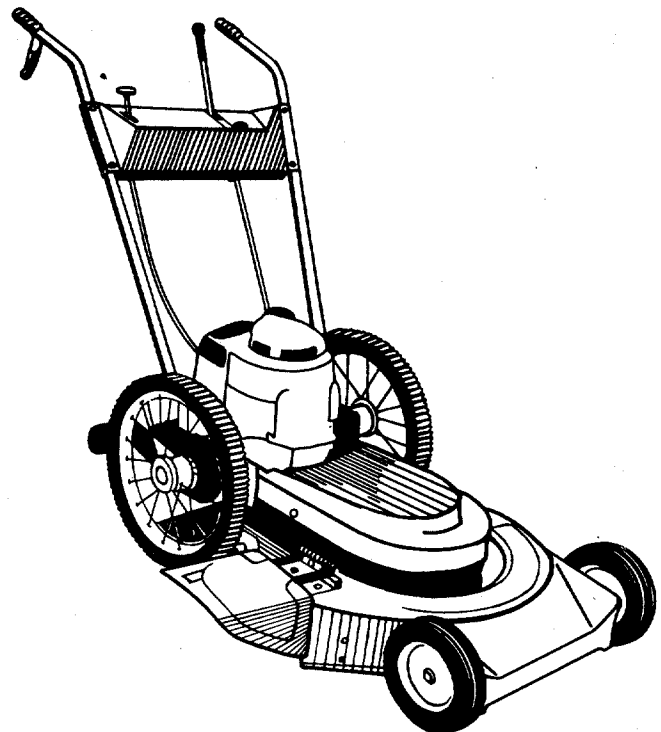
- ASSEMBLY
- OPERATION
- MAINTENANCE
- PARTS LIST

**Model Nos.**  
**127-550A**  
**127-550-300**

## Important:

Read Safety Rules and  
Instructions Carefully

**22"**  
**HI WHEEL**  
**SELF**  
**PROPELLED**  
**ROTARY**  
**MOWERS**



# **IMPORTANT**

It is suggested that this manual be read in its entirety before attempting to assemble or operate. Keep this manual in a safe place for future reference and for ordering replacement parts.

This unit is shipped WITHOUT GASOLINE or OIL. After assembly, see operating section of this manual for proper fuel and amount.

Your rotary mower is a precision piece of power equipment, not a plaything. Therefore exercise extreme caution at all times.

## **SAFE OPERATION PRACTICES FOR WALK-BEHIND MOWERS**

### **TRAINING**

1. Read the Operating and Service Instruction Manual carefully. Be thoroughly familiar with the controls and the proper use of the equipment.
2. Never allow children to operate a power mower. Only persons well acquainted with these rules of safe operation should be allowed to use your mower.
3. Keep the area of operation clear of all persons, particularly small children and pets. Stop engine when they are in the vicinity of your mower. Although the area of operation should be completely cleared of foreign objects, a small object may have been overlooked and could be accidentally thrown by the mower in any direction.
4. Thoroughly inspect the mower for any damage, and repair the damage before restarting and operating the mower.
5. If the equipment should start to vibrate abnormally, stop the engine and check immediately for the cause. Vibration is generally a warning of trouble.
6. Stop the engine whenever you leave the mower, before cleaning the mower housing, and when making any repairs or inspections.
7. When cleaning, repairing or inspecting, make certain the blade and all moving parts have stopped. Disconnect the spark plug wire, and keep the wire away from the plug to prevent accidental starting.
8. Before attempting to unclog the mower or discharge chute, stop the engine and be sure the blade(s) have stopped completely. Disconnect the spark plug wire and keep the wire away from the plug to prevent accidental starting.

### **PREPARATION**

1. Thoroughly inspect the area where the equipment is to be used and remove all stones, sticks, wire, bones and other foreign objects which could be picked up and thrown in any direction.
2. Do not operate equipment when barefoot or wearing open sandals. Always wear substantial footwear.
3. Do not wear loose fitting clothing that could get caught on the mower.
4. Check the fuel before starting the engine. Do not fill the gasoline tank indoors, when the engine is running, or while the engine is still hot. Wipe off any spilled gasoline before starting the engine.
5. Disengage the self-propelled mechanism or drive clutch on units so equipped before starting the engine.
6. Never attempt to make a wheel or cutting height adjustment while the engine is running.
7. Mow only in daylight or in good artificial light.
8. Never operate the equipment in wet grass. Always be sure of your footing; keep a firm hold on the handle and walk, never run.
9. Do not run the engine indoors.
10. Shut the engine off and wait until the blade comes to a complete stop before removing the grass catcher.
11. Mow across the face of slopes, never up-and-down. Exercise extreme caution when changing direction on slopes. Do not mow excessively steep slopes.
12. Always disconnect electric mowers (line operated) before cleaning, repairing or adjusting.
13. Never operate mower without proper guards, plates or other safety protective devices in place.
14. Keep washout ports and other mower-housing service openings closed when mowing.

### **OPERATION**

1. Do not change the engine governor settings or overspeed the engine. Excessive engine speeds are dangerous.
2. Do not put hands or feet near or under rotating parts. Keep clear of the discharge opening at all times.
3. Stop the blade(s) when crossing gravel drive, walks or roads.
4. After striking a foreign object, stop the engine, remove the wire from the spark plug,

### **MAINTENANCE AND STORAGE**

1. Check the blade and engine mounting bolts at frequent intervals for proper tightness.
2. Keep all nuts, bolts, and screws tight to be sure the equipment is in safe working condition.
3. Never store the equipment with gasoline in the tank inside of a building where fumes may reach an open flame or spark. Allow the engine to cool before storing in any enclosure.
4. To reduce fire hazard, keep the engine free of grass, leaves, or excessive grease.
5. Check the grass catcher bag frequently for wear or deterioration. For safety protection replace only with new bag meeting original equipment specifications.

# ASSEMBLY



## NOTE

Reference to left or right side of machine is from the operator's position at the handle facing forward.

The lawn mower, except for the handle and controls is fully assembled, packed and shipped in one carton.

1. Place the left side of the handle assembly over the two studs extending out from the left side of the frame. (See figure 1.)
2. Using the two 5/16" hex head bolts, attach the right side of the handle assembly to the right side of the frame. (See figure 2.)



## NOTE

Use the longer bolt in the rear hole.

3. Secure the handle on both sides with four lockwashers and four nuts.

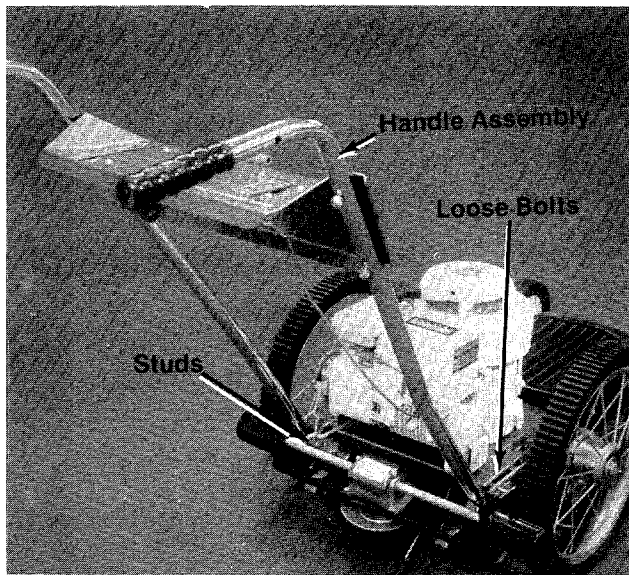


FIGURE 1

4. Place the ferrule, with the larger hole, into the pivot bracket on the left rear side of the mower and thread in the short (22 inch) control rod until the threads are even with the end of the ferrule. (See figure 3.)

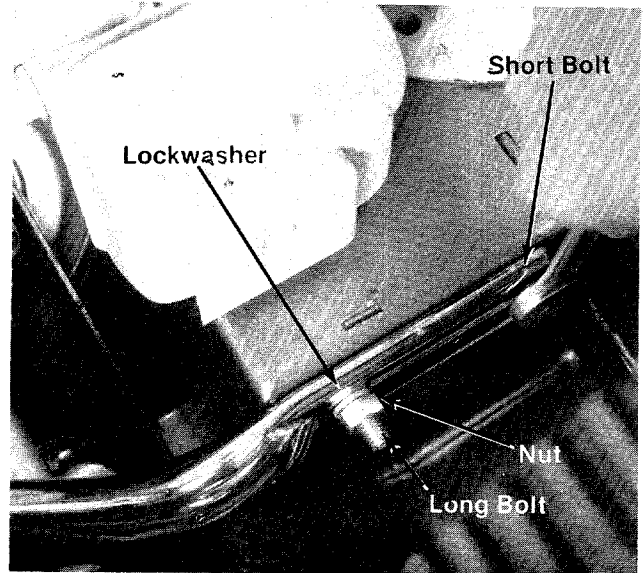


FIGURE 2

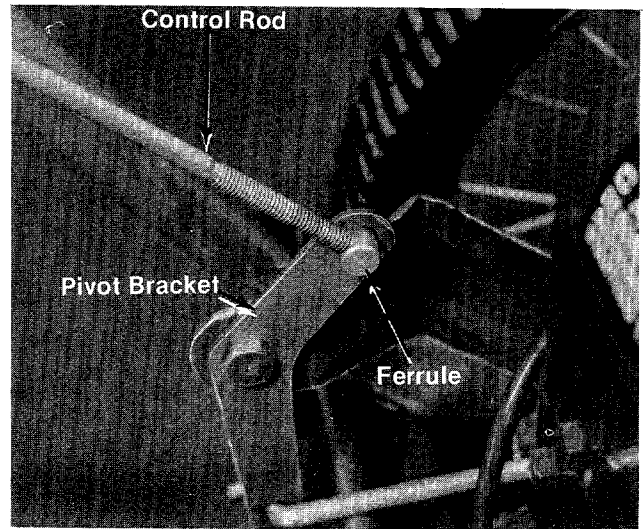


FIGURE 3

5. Attach the Blade Engagement Lever to the Control Rod as it is shown in figure 4.

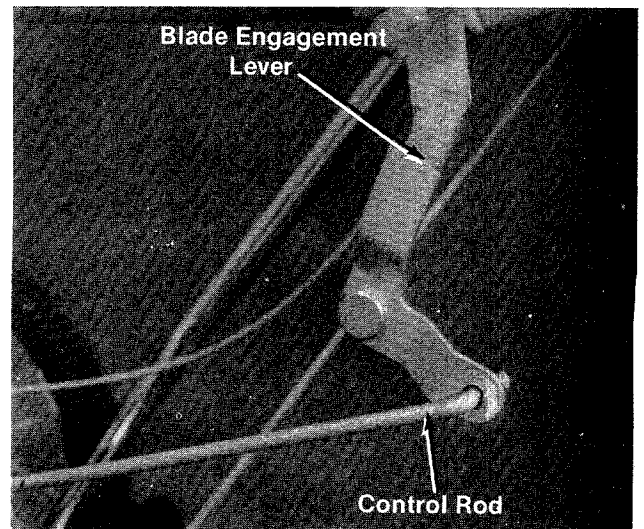
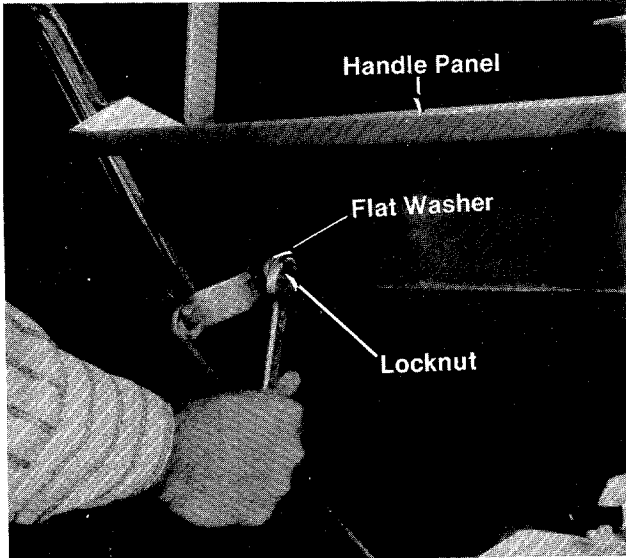


FIGURE 4

- Assemble the control lever to the handle panel with the flat washer and locknut. (See figure 4.)

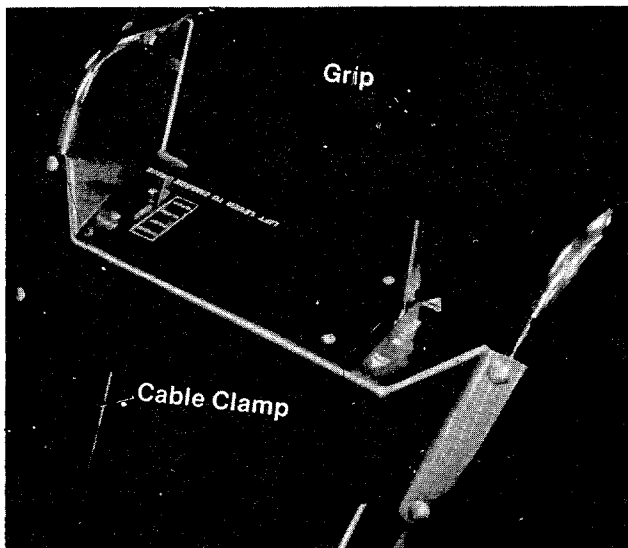


If the length of the control rod has to be adjusted it is necessary to remove the flat washer and locknut.



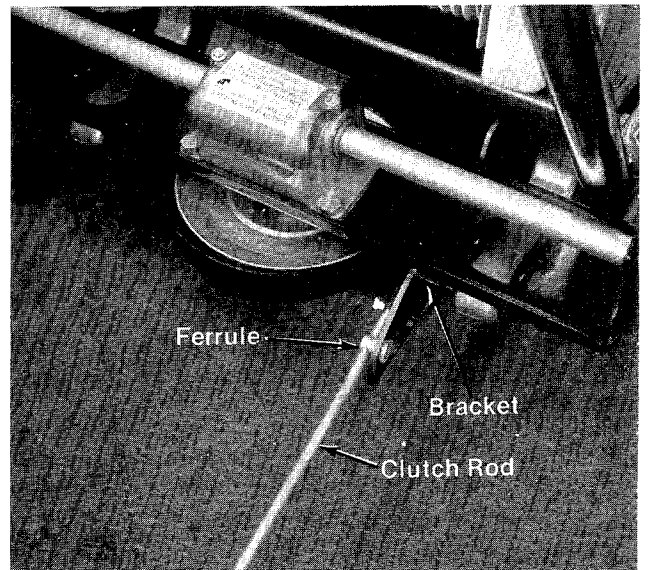
**FIGURE 5**

- Place the grip on the blade engagement lever. (See figure 6.)
- Use the cable clamp to fasten the throttle control wire to the right handle.



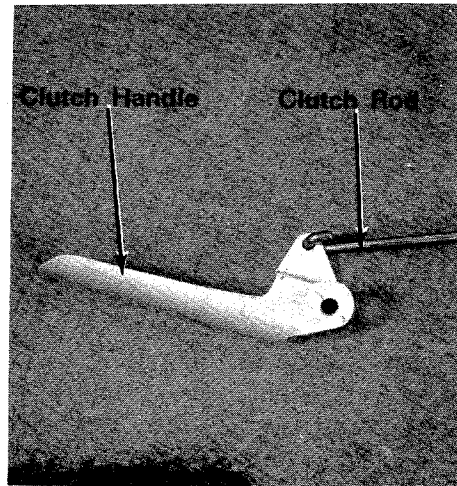
**FIGURE 6**

- Place the ferrule with the smaller hole, in the bracket on the right rear side of the mower and thread in the longer (39 inches) clutch rod until 1 3/8" extends through the ferrule. (See figure 7.)

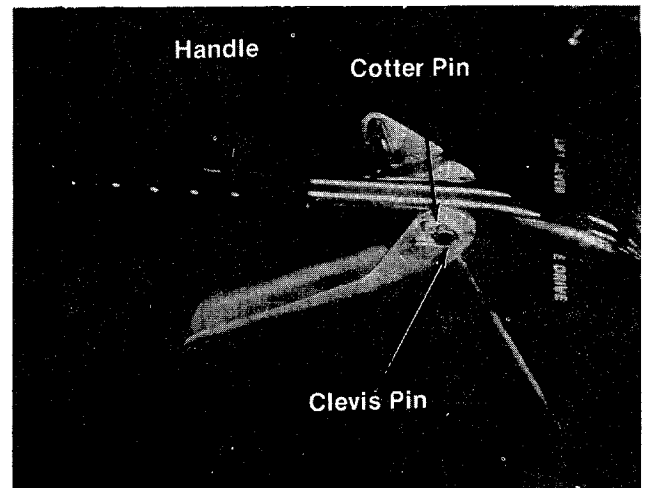


**FIGURE 7**

- Attach the clutch handle to the clutch rod as it is shown in figure 8.



**FIGURE 8**



**FIGURE 9**

11. Assemble the clutch handle to the right handle with the drilled stud and cotter pin. (See figure 9.)
12. Slip hand grips on the upper end of each handle. They will slip on more easily if you first soak them in warm soapy water.



**WARNING**

Check the operation of the clutch. With the clutch handle released the pinions should not touch the rear wheels. Squeezing the clutch handle should engage the pinions firmly into the wheels. If it is necessary to adjust the length of the clutch rod, you have to remove the clevis pin and cotter pin.

## OPERATION

### THROTTLE CONTROL

Your engine is equipped with a "Choke-a-Matic" choke. Push the throttle control lever all the way forward to activate the choke. Move the throttle control all the way back to stop the engine. The engine speed can be regulated by moving the throttle control between the fast and slow position. (See figure 10.)

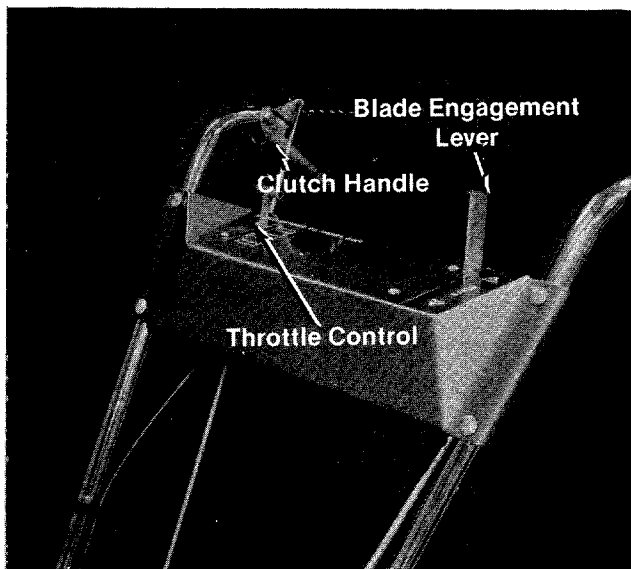


FIGURE 10

### CLUTCH HANDLE

Squeezing the clutch handle engages the pinions into the rear wheels and drives the mower. Release the clutch handle and the mower is free wheeling. You must release the clutch handle when making a turn. (See figures 10, 11 and 12.)

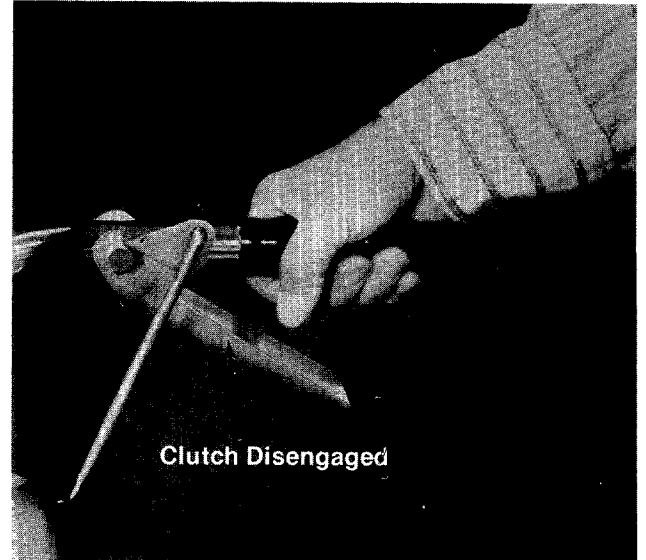


FIGURE 11

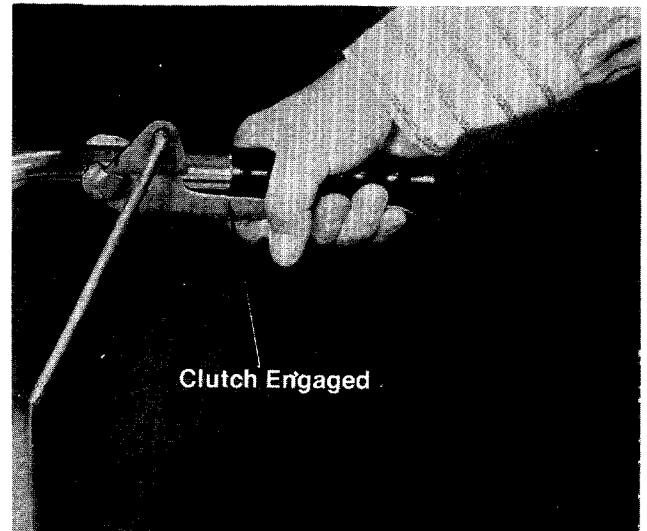


FIGURE 12

### BLADE ENGAGEMENT LEVER

Move the blade engagement lever forward to engage the blades. Pull the lever towards you to shut off the blades. The blades should be shut off when starting the mower and moving the mower without cutting grass. (See figure 10.)

### RECOIL STARTER

Place your left foot on the side of the deck and pull the recoil starter handle rapidly. (See figure 13.)



Be sure the blade engagement lever is in the OFF position.

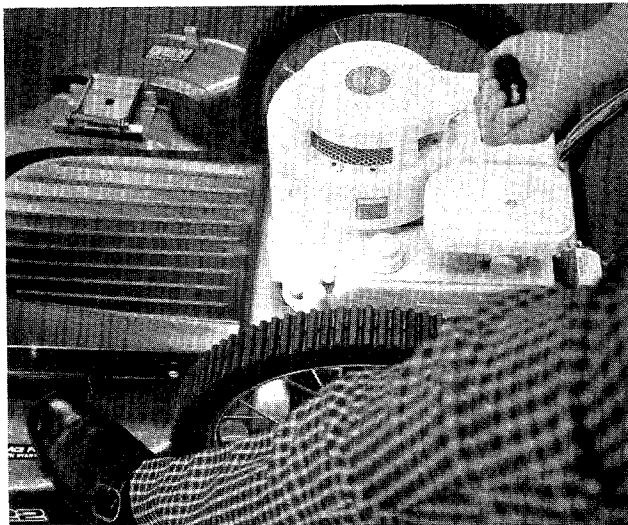


FIGURE 13

### HEIGHT ADJUSTMENT



Before changing the cutting height, stop the engine and disconnect the spark plug wire.

Unscrew the rear axle bolt and place it in one of the four height adjustment holes. The cupped washer must be installed exactly as shown in figure 14.

Adjust the front wheels in the same manner. All wheels must be in the same relative position. (See figure 15.)

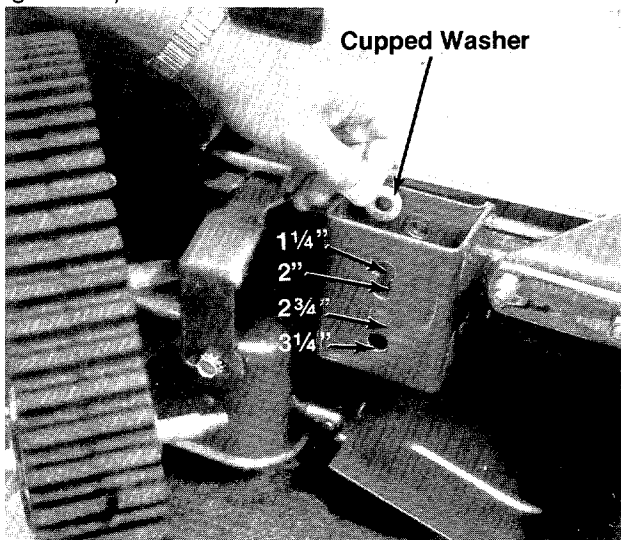


FIGURE 14

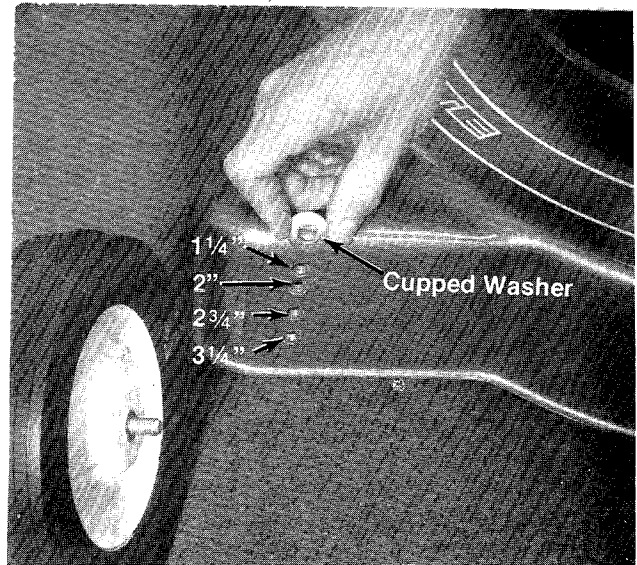


FIGURE 15

## MAINTENANCE

### LUBRICATION

**Rear Wheels**—Remove the two plastic plugs on the hub and lubricate with a few drops of engine oil once a season. Replace the oil plugs. (See figure 16.)

**Front Wheels**—Lubricate with a few drops of engine oil once a season. (See figure 17.)

**Pinion Bearings**—Lubricate with a few drops of engine oil once a season. (See figure 18.)

**Gear Box**—Remove the two screws and lift off the cover. The lubricant should cover the lower gear. Check after every 25 hours of operation. Use a high temperature (450°F.) grease.

Oil all linkage such as the clutch and blade controls once a year with engine oil.

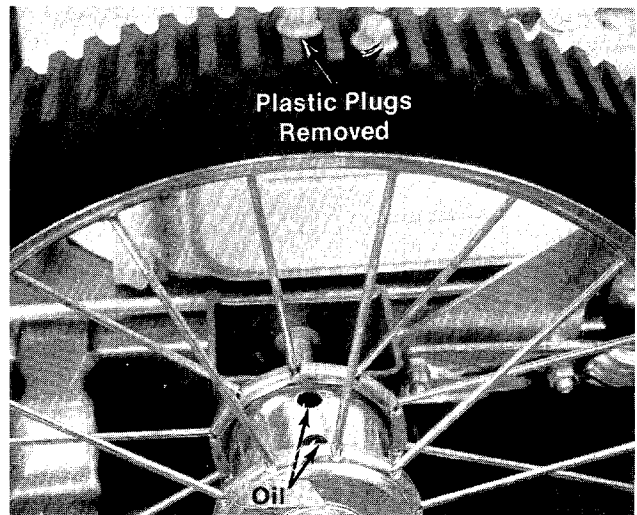


FIGURE 16



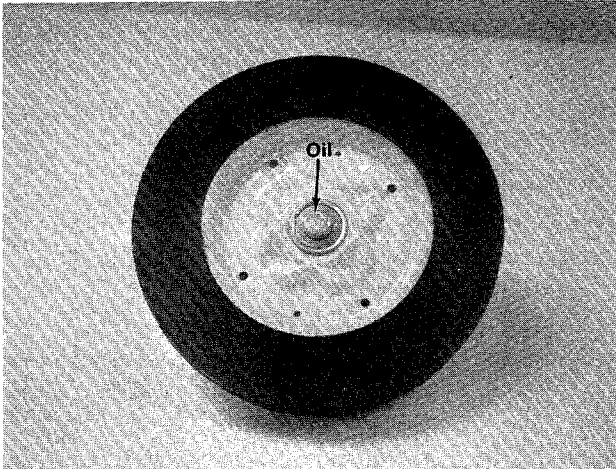


FIGURE 17

**Blade Spindle Bearing**—They are sealed and require no further lubrication.

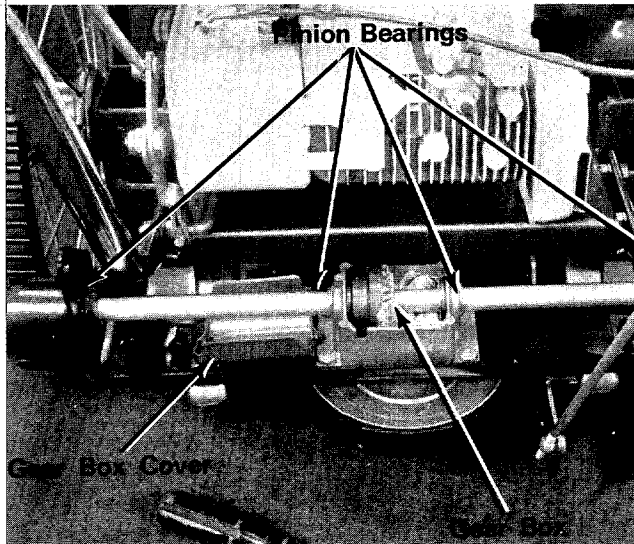


FIGURE 18

### CUTTING BLADE

The blade may be removed for sharpening or replacement as follows:

1. Remove the large bolt and lockwasher holding the blade and adapter to the engine crankshaft.
2. Remove the blade and adapter from the blade spindle.
3. Be careful not to lose the key on the crankshaft.
4. Remove the two smaller bolts, lockwashers and nuts holding the blade to the adapter. (See figure 19.)

When sharpening the blade, follow the original angle of grind as a guide. It is extremely important that each cutting edge receives an equal amount of grinding to prevent an unbalanced blade. An unbalanced blade will cause excessive vibration when rotating at high speeds and may cause damage to the mower.

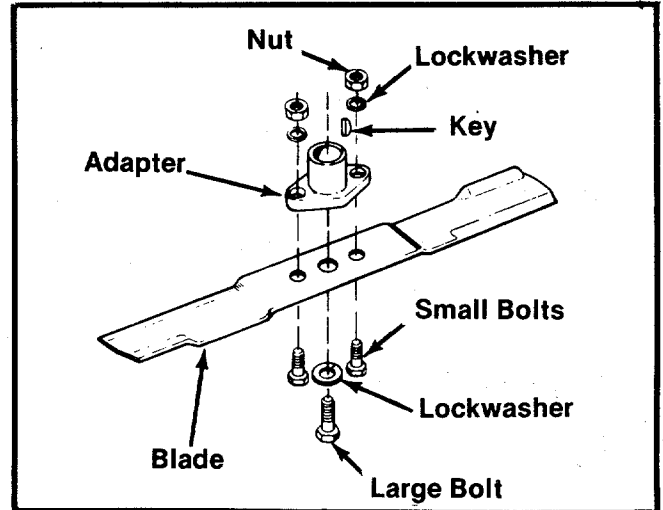


FIGURE 19

The blade can be tested for balance by balancing it on a screwdriver. Remove metal from the heavy side until it balances evenly. (See figure 20.)



When replacing the blade, be sure the side of the blade marked "Bottom" or having the part number is facing the ground when the mower is in the operating position.

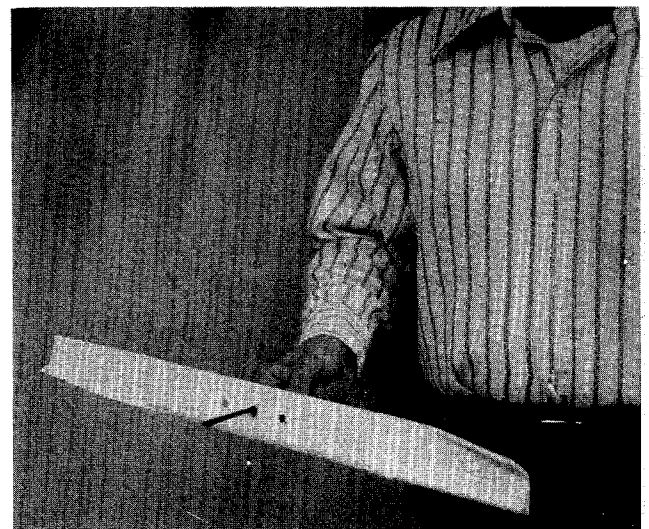


FIGURE 20

## BLADE BELT REPLACEMENT

The blade belt replacement may be made as follows:

1. Remove the blade spindle cover. (See figures 21 and 22.)
2. Remove the front belt guard.
3. Remove the blade tension spring.
4. Loosen the nut on the belt clip of the idler pulley.
5. Remove the brake lever assembly by removing the bolt and locknut. (See figure 22.)
6. Remove the drive belt from the engine pulley. (See figure 23.)
7. Remove the damaged or worn belt.
8. Place the new blade belt on the engine pulley. Do not bend belt guard pins. Belt should be inside of pins.
9. Replace the drive belt on the engine pulley.
10. Work the belt to the front and mount it on the blade spindle pulley. Replace the front belt guard.
11. Replace the brake lever assembly.
12. Slip the belt on the idler pulley.
13. Replace the blade tension spring.
14. Move the blade lockout handle to the ON position.
15. Position the belt clip on the idler pulley to clear the tightened belt. Secure the belt clip in position with the nut. (See figure 21.)
16. Replace the blade spindle cover.

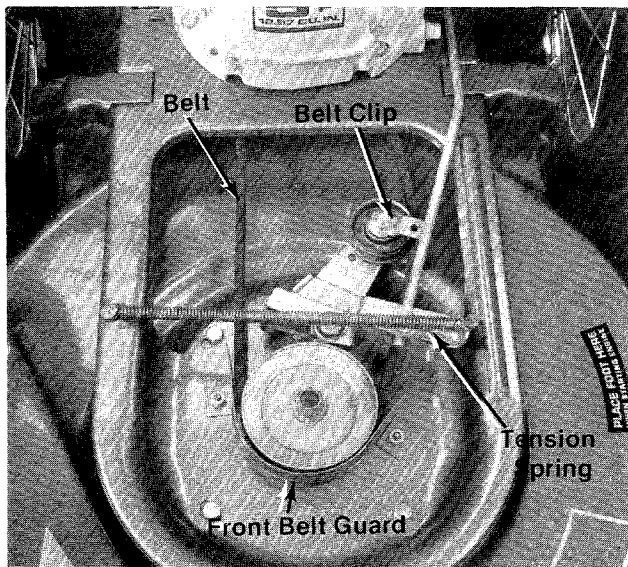


FIGURE 21

## DRIVE BELT REPLACEMENT

The drive belt replacement may be made as follows: (See figure 23.)

1. Remove the bottom frame assembly.
2. Remove the pulley from the pinion shaft. Do not misplace pulley key on pinion shaft.
3. Remove and replace the drive belt.
4. When replacing the pulley, be sure the key is in place on the pinion shaft and that the small hub of the pulley faces up.
5. Replace the bottom frame assembly.

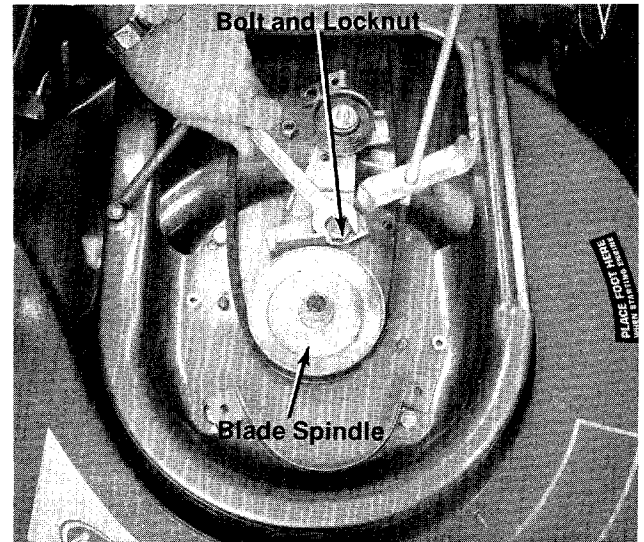


FIGURE 22

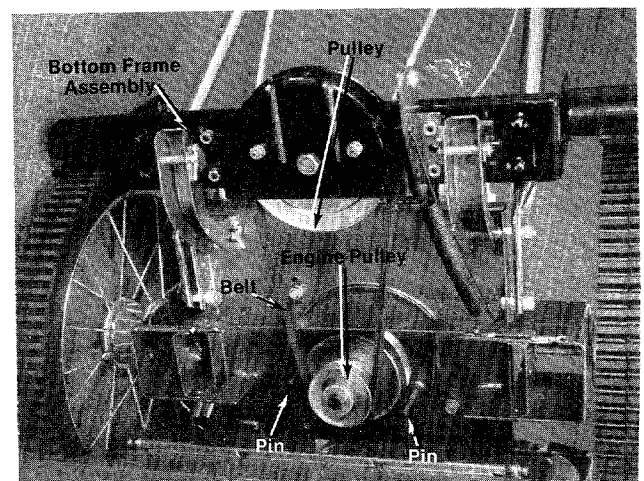


FIGURE 23

## TROUBLESHOOTING

If a problem is encountered, refer to the chart on page 11.



# OFF-SEASON STORAGE

If the machine is to be inoperative for a period longer than 30 days, the following procedures are recommended:

- 1 Working outdoors, drain all fuel from the fuel tank. Use a clean dry cloth to absorb the small amount of fuel remaining in the tank, then run the engine until all fuel in the carburetor is exhausted.



Do not drain fuel while smoking, or if near an open fire.

- 2 Drain all the oil from the crankcase (this should be done after the engine has been operated and is still warm) and refill the crankcase with clean new oil
- 3 Disconnect the spark plug wire and remove the spark plug from the cylinder. Pour about 2 or 3 tablespoons of engine oil into the cylinder, and then turn the engine over several times to spread out the oil. Replace the spark plug, but do not connect the wire.
- 4 Clean the engine and the entire mower thoroughly.
- 5 Lubricate all lubrication points then wipe the entire machine with an oiled rag in order to protect the surfaces.



**NOTE**

The manufacturer **DOES NOT** recommend the use of any accessory on this rotary mower other than those manufactured by MTD Products Inc.



**IMPORTANT**

After striking a foreign object, stop the engine, remove wire from spark plug, thoroughly inspect the mower for any damage, and repair the damage before re-starting and operating the mower.

GRASS CATCHER Model No. 197-003A is available as optional equipment for the mower shown in this manual.



**WARNING:**

1. The mower should not be operated without the entire grass catcher or chute deflector in place.
2. The mower should not be operated without the protective shield on the rear of the deck in place.



**NOTE:**

Under normal usage bag material is subject to wear, and should be checked periodically. Be sure any replacement bag complies with the mower manufacturer's recommendations.

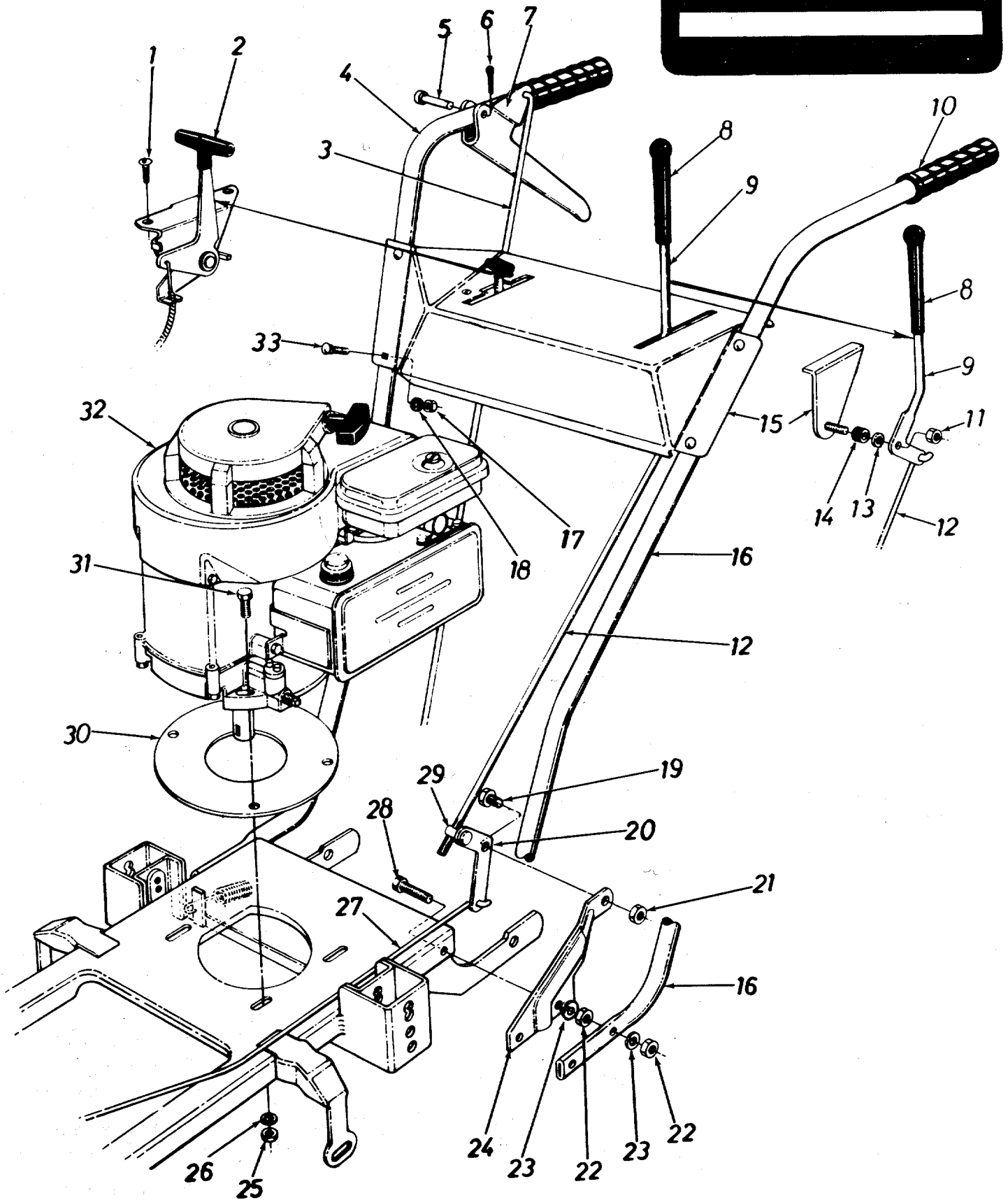
For replacement bags, use only factory authorized replacement bag No. 764-0119.

# TROUBLE SHOOTING CHART

Problem	Cause	Remedy
1 Engine fails to start	<ul style="list-style-type: none"> <li>A Check fuel tank for gas</li> <li>B Spark plug lead wire disconnected</li> <li>C Throttle control lever not in the starting position</li> <li>D Faulty spark plug</li> <li>E Carburetor improperly adjusted Engine flooded</li> <li>F Old stale gasoline</li> </ul>	<ul style="list-style-type: none"> <li>A Fill tank if empty.</li> <li>B Connect lead wire.</li> <li>C Move throttle lever to start position.</li> <li>D Spark should jump gap between control electrode and side electrode. If spark does not jump, replace the spark plug.</li> <li>E Remove spark plug, dry the plug, crank engine with plug removed, and throttle in off position. Replace spark plug and lead wire and resume starting procedures.</li> <li>F Drain tank and refill with fresh gasoline.</li> </ul>
2 Hard starting or loss of power	<ul style="list-style-type: none"> <li>A Spark plug wire loose</li> <li>B Carburetor improperly adjusted</li> <li>C Dirty air cleaner</li> </ul>	<ul style="list-style-type: none"> <li>A Connect and tighten spark plug wire.</li> <li>B Adjust carburetor. See engine manual.</li> <li>C Clean air cleaner as described in the engine manual.</li> </ul>
3 Operation erratic	<ul style="list-style-type: none"> <li>A Dirt in gas tank</li> <li>B Dirty air cleaner</li> <li>C Water in fuel supply</li> <li>D Vent in gas cap plugged</li> <li>E Carburetor improperly adjusted</li> </ul>	<ul style="list-style-type: none"> <li>A Remove the dirt and fill tank with fresh gas.</li> <li>B Clean air cleaner as described in the engine manual.</li> <li>C Drain contaminated fuel and fill tank with fresh gas.</li> <li>D Clear vent or replace gas cap</li> <li>E Adjust carburetor. See engine manual.</li> </ul>
4 Occasional skip (hesitates) at high speed	<ul style="list-style-type: none"> <li>A Carburetor idle speed too slow</li> <li>B Spark plug gap too close</li> <li>C Carburetor idle mixture adjustment improperly set</li> </ul>	<ul style="list-style-type: none"> <li>A Adjust carburetor. See engine manual.</li> <li>B Adjust to .030".</li> <li>C Adjust carburetor. See engine manual.</li> </ul>
5 Idles poorly	<ul style="list-style-type: none"> <li>A Spark plug fouled, faulty, or gap too wide.</li> <li>B Carburetor improperly adjusted</li> <li>C Dirty air cleaner</li> </ul>	<ul style="list-style-type: none"> <li>A Reset gap to .030" or replace spark plug.</li> <li>B Adjust carburetor. See engine manual.</li> <li>C Clean air cleaner as described in the engine manual.</li> </ul>
6 Engine overheats	<ul style="list-style-type: none"> <li>A Carburetor not adjusted properly</li> <li>B Air flow restricted</li> <li>C Engine oil level low</li> </ul>	<ul style="list-style-type: none"> <li>A Adjust carburetor. See engine manual.</li> <li>B Remove blower housing and clean as described in the engine manual.</li> <li>C Fill crankcase with the proper oil.</li> </ul>
7 Excessive vibration	<ul style="list-style-type: none"> <li>A Cutter blade loose or unbalanced</li> </ul>	<ul style="list-style-type: none"> <li>A Tighten blade and adapter.</li> </ul>

127-550A

IF YOU WRITE TO US ABOUT THIS ARTICLE  
OR IF YOU ORDER REPLACEMENT PARTS AL-  
WAYS MENTION THIS MODEL & SERIAL NO  
MODEL



**PARTS LIST FOR MODEL 127-550A**

REF. NO.	PART NO.	COLOR CODE	DESCRIPTION	NEW PART
1	710-0227		Hex Wash. Hd. AB-Tapp. Scr. #8 x .38	N
2	746-0161		Throttle Control Ass'y.—Comp.	
3	747-0165		Control Rod—Drive	
4	749-0190		Handle—R.H.	
5	711-0415		Clevis Pin .380 Dia. x 1.62" Lg.	
6	714-0101		Cotter Pin—Internal 1/2" Dia.	
7	12921		<b>Clutch Grip Ass'y.</b>	
8	720-0143		Grip	
9	747-0167		Clutch Lever	
10	01166		Grip	
11	712-0116		Hex Ins. Jam Nut 3/8-24 Thd.	
12	747-0166		Control Rod—Blade	
13	736-0300		Fl.-Wash.	
14	735-0126		Rubber Wash.	
15	12594 —463		Handle Panel Ass'y.	
16	749-0191		Handle—L.H.	
17	712-0267		Hex Nut 5/16-18 Thd.*	
18	736-0119		L.-Wash. 5/16" Scr.*	
19	738-0147		Shld. Scr. .500 Dia. x .170	
20	12596		Pivot Bracket	
21	712-0181		Hex Top L.-Nut 3/8-16 Thd.	
22	712-0123		Hex Nut 5/16-24 Thd.*	
23	736-0119		L.-Wash. 5/16" Scr.*	
24	12593		Pivot Mounting Bracket	
25	712-0123		Hex Nut 5/16-24 Thd.*	
26	736-0119		L.-Wash. 5/16" Scr.*	
27	747-0168		Control Rod—Idler	
28	710-0409		Hex Scr. 5/16-24 x 1.75" Lg.*	
29	711-0179		Ferrule	
30	08325 —463		Belt Trap Ass'y.	
31	710-0158		Hex Scr. 5/16-24 x 1.25" Lg.*	
32	—		Engine	
33	710-0262		Carriage Bolt 5/16-18 x 1.50" Lg.*	

\*For faster service, obtain standard nuts, bolts, and washers locally. If these cannot be obtained locally, order by part number and size as shown on parts list.

(463—Top Flite Red) When ordering parts, if color or finish is important, use the appropriate color code shown at left. (e.g. Top Flite Red Finish—11992 (463) )

The engine is not under warranty by the mower manufacturer. If repairs or service is needed on the engine, please contact your nearest authorized engine service outlet. Check the "Yellow Pages" of your telephone book under "Engines-Gasoline."

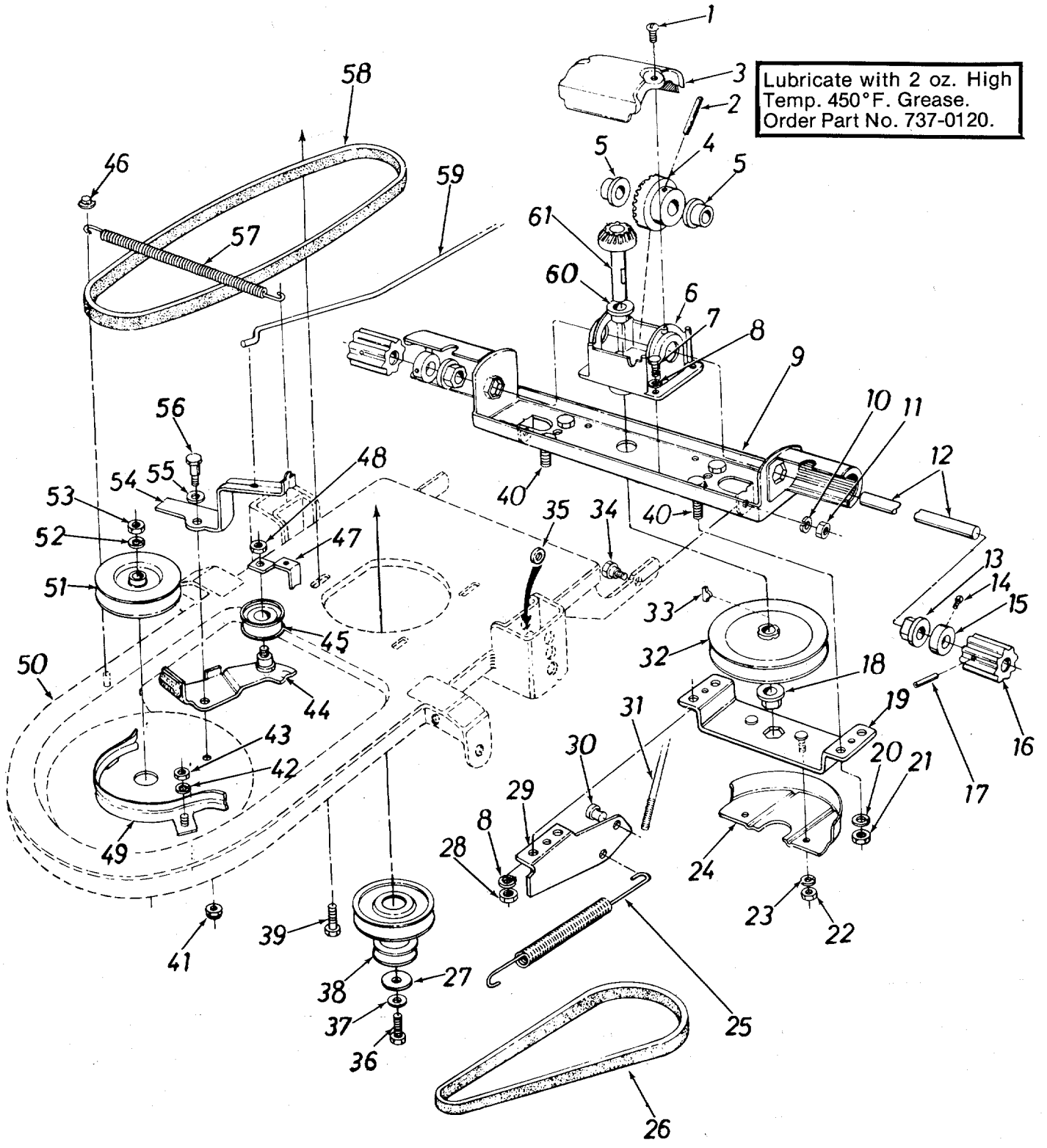
Find us fast in the





# 127-550A

Lubricate with 2 oz. High Temp. 450°F. Grease.  
Order Part No. 737-0120.



**PARTS LIST FOR MODEL 127-550A**

REF. NO.	PART NO.	COLOR CODE	DESCRIPTION	NEW PART	REF. NO.	PART NO.	COLOR CODE	DESCRIPTION	NEW PART
1	710-0148		Hex Wash. Hd. F-Tapp. Scr. #8-32 x .38" Lg.		33	714-0229		#2 Woodruff Key 3/32 x 1/2" Dia.	
2	715-0246		Spring Pin Spirol .188 Dia. x 1.25" Lg.		34	738-0143		Shld. Scr. .498 Dia. x .340" Lg.	
3	08187	—463	Gear Box Cover		35	736-0105		Belleville Wash. 3/8" I.D.	
4	748-0135		Bevel Gear		36	710-0152		Hex Scr. 3/8-24 x 1.00" H.T.	
5	748-0110		Flange Bearing .628 I.D.		37	736-0217		L.-Wash. 3/8" Scr. H.D.	
6	08189		Gear Box		38	756-0205		Two Step Engine Pulley	
7	710-0352		Hex Self Tapp. Scr. 1/4-20 x .38" Lg.		39	710-0158		Hex Scr. 5/16-24 x 1.25" Lg.*	
8	736-0329		L.-Wash. 1/4" Scr.*		40	710-0252		Hex Scr. 1/4-20 x .75" Lg.*	
9	12584	—463	Top Drive Frame Ass'y.		41	712-0181		Hex Top L.-Nut 3/8-16 Thd.	
10	736-0169		L.-Wash. 3/8" Scr.*		42	736-0329		L.-Wash. 1/4" Scr.*	
11	712-0798		Hex Nut 3/8-16 Thd.*		43	712-0287		Hex Nut 1/4-20 Thd.*	
12	08348		Drive Shaft		44	12278		Idler Brkt. Ass'y. with Brake Shoe	
13	748-0227		Flange Bearing .628" I.D.		45	756-0199		Fl.-Idler with Flanges 1.875 O.D.	
14	710-0421		Set Scr. 5/16-18 x .25" Lg.		46	726-0111		Push Cap 3/16" Rod	
15	711-0169		Collar 5/8" I.D.		47	04563		Belt Clip	
16	748-0182		Drive Pinion		48	712-0116		Hex Inserted L.-Nut 3/8-24 Thd.	
17	715-0120		Spring Pin Spiral .188 Dia. x 1.00" Lg.		49	08324	—463	Belt Guard	
18	748-0226		Hex Flange Bearing .503" I.D.		50	12582	—463	Frame Ass'y. Comp.	
19	08774	—463	Bottom Frame Ass'y.		51	09925		Sheave Ass'y.—4" Dia. (Blade Spindle)	
20	736-0329		L.-Wash. 1/4" Scr.*		52	736-0921		L.-Wash. 1/2" Scr.*	
21	712-0287		Hex Nut 1/4-20 Thd.*		53	712-0922		Hex Jam Nut 1/2-20 Thd.	
22	712-0287		Hex Nut 1/4-20 Thd.*		54	09371		Brake Lever	
23	736-0329		L.-Wash. 1/4" Scr.*		55	736-0108		Fl.-Wash. .510" I.D. x .750" O.D.	
24	08772	—463	Pulley Cover		56	738-0234		Shld. Scr..500" Dia. x .295	
25	732-0185		Extension Spring		57	732-0158		Blade Tension Spring	
26	754-0177		V-Belt 1/2" x 32" Lg. (Dr. Belt)		58	754-0109		V-Belt 1/2" x 43" Lg.	
27	736-0235		Fl.-Wash. .406" I.D. x 1.25" O.D.		59	747-0168		Control Rod—Idler	
28	712-0287		Hex Nut 1/4-20 Thd.*		60	748-0108		Flange Brg. .503 I.D.	
29	12587	—463	Spring Bracket		61	07957		Pinion Shaft Ass'y.	
30	711-0619		Ferrule—1/4"		62	12591		(Drive Ass'y. Comp.)	
31	747-0165		Control Rod—Drive						
32	756-0254		V-Pulley 1/2" I.D. x 6.0" O.D.						

*(whole thing)*

\*For faster service, obtain standard nuts, bolts and washers locally. If these items cannot be obtained locally, order by part number and size as shown on parts list.

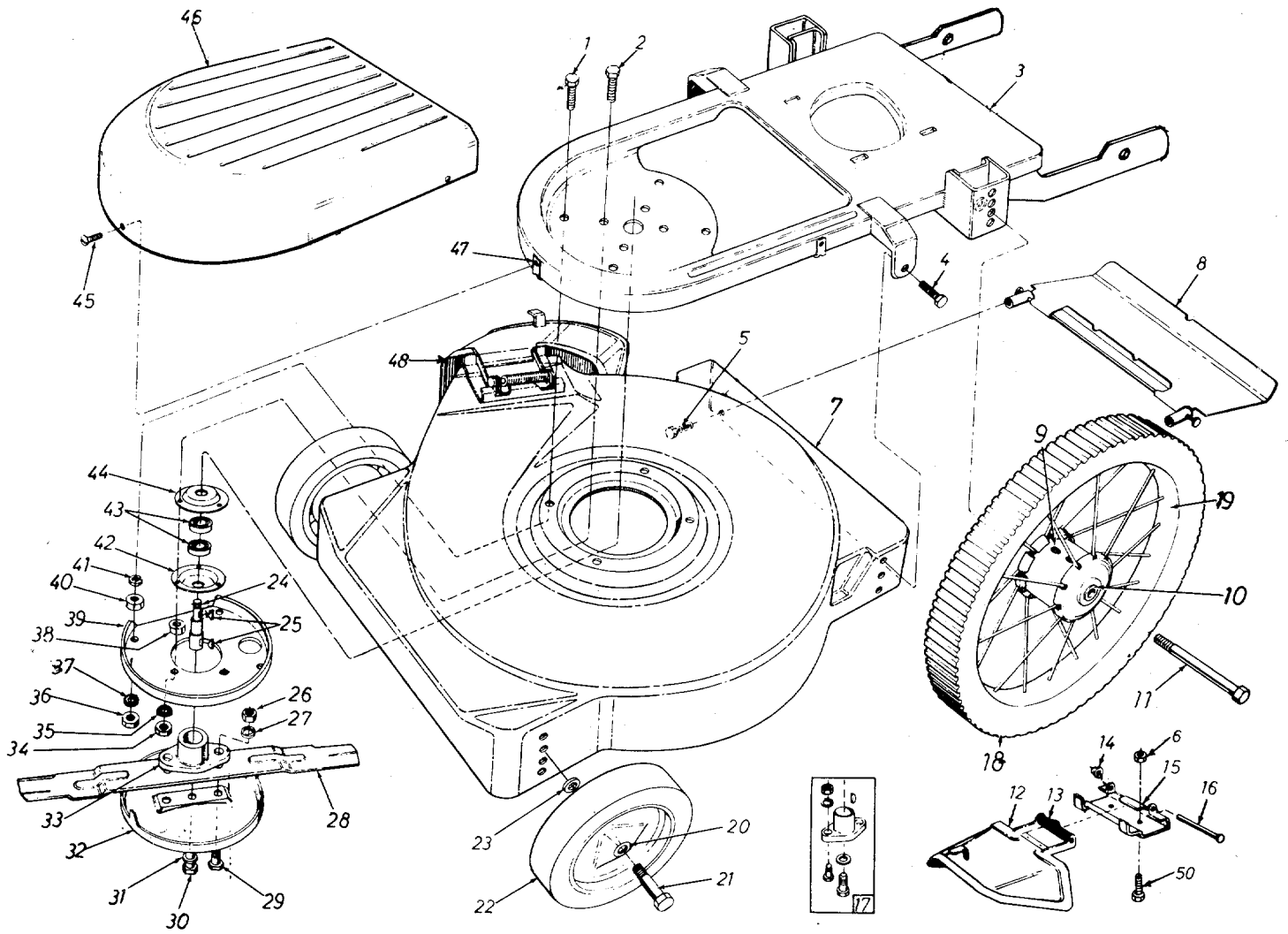
(463—Top Flite Red) When ordering parts, if color or finish is important, use the appropriate color code shown at left. (e.g. Top Flite Red Finish—11992 (463) )

Find us fast in the

The engine is not under warranty by the mower manufacturer. If repairs or service is needed on the engine, please contact your nearest authorized engine service outlet. Check the "Yellow Pages" of your telephone book under "Engines-Gasoline."



# 127-550A



**PARTS LIST FOR MODEL 127-550A**

REF. NO.	PART NO.	DESCRIPTION	NEW PART	REF. NO.	PART NO.	COLOR CODE	DESCRIPTION	NEW PART
1	710-0158	Hex Scr. 5/16-24 x 1.25" Lg.*		25	714-0365		#6 Hi-Pro Key 5/32 x 5/8" Dia.	
2	710-0158	Hex Scr. 5/16-24 x 1.25" Lg.*		26	712-0123		Hex Nut 5/16-24 Thd.*	
3	12582 —463	Frame Ass'y. Comp.		27	736-0119		L-Wash. 5/16" Scr.*	
4	710-0209	Hex Sems Scr. 3/8-16 x .62" Lg.*		28	742-0125		22" Blade	
5	710-0567	Hex Sems Scr. 1/4-28 x .62" Lg.		29	710-0117		Hex Scr. 5/16-24 x 1.00" H.T.	
6	712-0287	Hex Nut 1/4-20 Thd.*		30	710-0459		Hex Scr. 3/8-24 x 1.50" H.T.	
7	12422 —463	Deck Ass'y.		31	736-0217		L.-Wash. 3/8" Scr. H.D.	
8	11193 —463	Rear Protec. Shield Ass'y. Comp.		32	07919		Scalp Plate	
	718-0132	Oil Cap		33	10769		Blade Adapter Kit	
10	741-0113	Ball Brg. .504" I.D. x 1.38" Dia.		34	712-0123		Hex Nut 5/16-24 Thd.*	
11	738-0114	Shld. Scr. .498" Dia. x 4.755"		35	736-0119		L.-Wash. 5/16" Scr.*	
12	11141 —463	Chute Deflector Ass'y.		36	712-0123		Hex Nut 5/16-24 Thd.*	
13	732-0253	Torsion Spring		37	736-0119		L.-Wash. 5/16" Scr.*	
14	726-0106	Push Nut 1/4" Rod		38	712-0123		Hex Nut 5/16-24 Thd.*	
15	11130 —463	Adapter Plate		39	12281		Blade Reinforcement Plate	
16	711-0555	Pivot Pin		40	712-0123		Hex Nut 5/16-24 Thd.*	
17	10769	Blade Adapter Kit		41	736-0119		L.-Wash. 5/16" Scr.*	
18	734-0438	16" Rear Wheel Ass'y.— Comp.		42	08253		Bearing Housing	
19	734-0180	16" Rear Wheel—Less Tire		43	741-0919		Ball Brg. .787" I.D. x 1.85" O.D.	
	734-0391	Semi Pneumatic Tire 16 x 1.75 Gear Tread		44	08253		Bearing Housing	
20	741-0178	Ball Brg. .38 I.D.		45	710-0436		Hex Tap. Scr. #10-24 x .62"	
21	710-0427	Hex Scr. 3/8-16 x 2.00" Lg.*		46	08295		Blade Spindle Cover	
22	734-0643	Front Wheel Ass'y. Comp.		47	712-0526		Speed Nut #10	
23	736-0105	Belleville Wash. 3/8" I.D.		48	11679 —463		Chute Deflector Ass'y.— Comp.	
24	738-0251	Blade Spindle		49	741-0177		Blade Spindle Ass'y.— Comp. (Incl. Ref. #24, 42, 43, 44)	
				50	710-0252		Hex Scr. 1/4-20 x .75" Lg.*	

\*For faster service obtain standard nuts, bolts, and washers locally. If these items cannot be obtained locally, order by part number and size as shown on the parts list.

(463—Top Flite Red) When ordering parts, if color or finish is important, use the appropriate color code shown at left. (e.g. Top Flite Red Finish—11992 (463) )

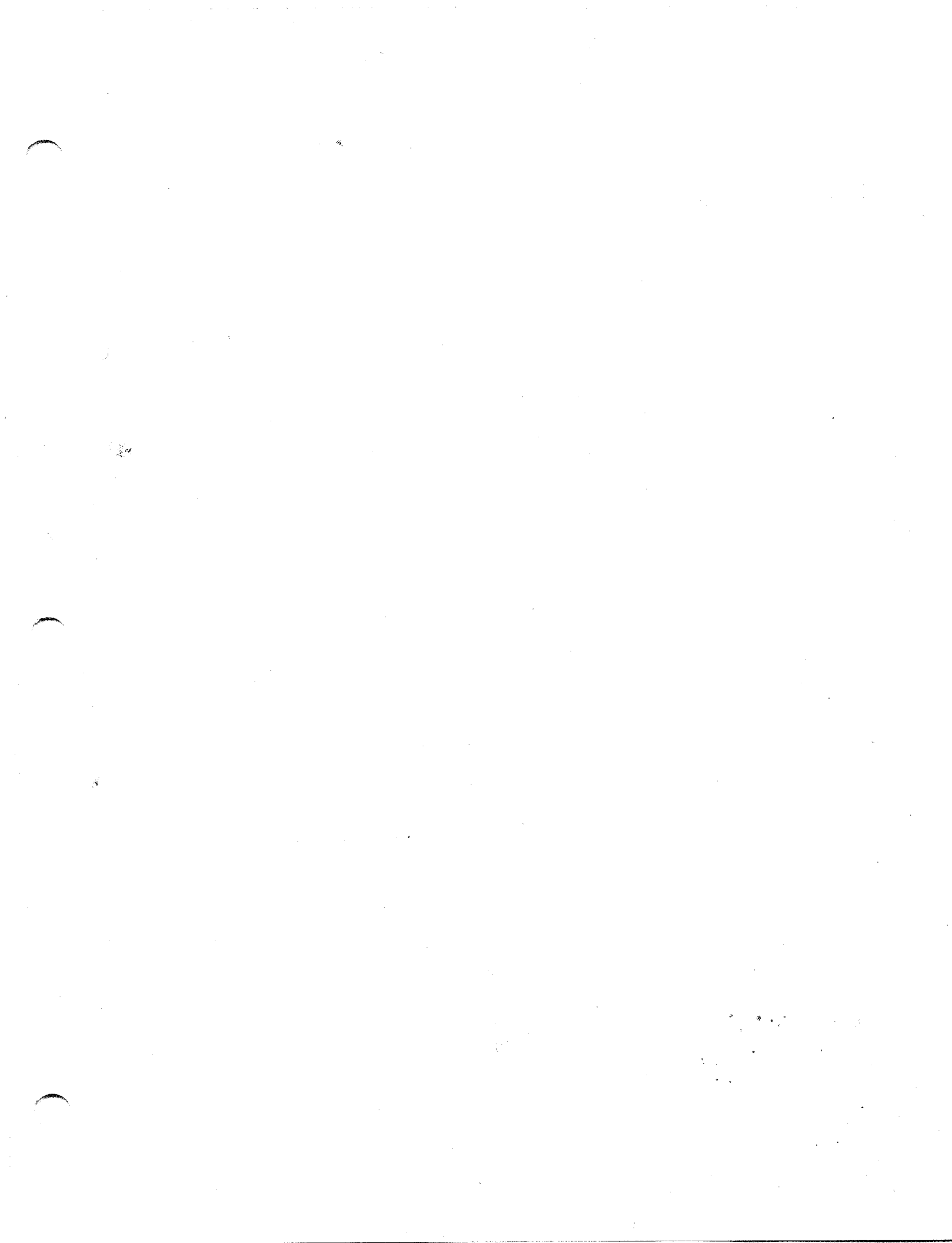
The engine is not under warranty by the mower manufacturer. If repairs or service is needed on the engine, please contact your nearest authorized engine service outlet. Check the "Yellow Pages" of your telephone book under "Engines-Gasoline."

Find us fast in the









# PARTS INFORMATION

## POWER EQUIPMENT PARTS AND SERVICE

Parts and service for all MTD manufactured power equipment are available through the authorized service firms listed below. All orders should specify the model number of your unit, parts numbers, description of parts and the quantity of each part required.

<b>ALABAMA</b>	<b>BIRMINGHAM</b>	
	Auto Electric & Carburetor Co. ....	2625 4th Ave. S. .... 35233
<b>ARKANSAS</b>	<b>NORTH LITTLE ROCK</b>	
	Sutton's Lawn Mower Shop .....	Rt. 4, Box 368 ..... 72117
	<b>FORT SMITH</b>	
	Mity Mite Motors, Inc. ....	2515 Towson Ave. .... 72901
<b>CALIFORNIA</b>	<b>SAN BERNARDINO</b>	
	Lawn Mower Supply Co. ....	25608 E. Baseline .... 92410
	<b>SAN FRANCISCO</b>	
	J.W. Jewett Co. ....	981 Folsom St. .... 94107
	<b>SACRAMENTO</b>	
	Luttig & Severson .....	2030 28th St. .... 95818
<b>COLORADO</b>	<b>DENVER</b>	
	South Denver Lawn Equip. ....	527 West Evans ..... 80223
<b>CONNECTICUT</b>	<b>SUFFIELD</b>	
	The Jones & Ramsey Co. ....	850 Thompsonville Rd. 06078
<b>FLORIDA</b>	<b>JACKSONVILLE</b>	
	Radco Distributors .....	2403 Market St. .... 32206
	<b>CORAL GABLES</b>	
	Moz-All of Florida, Inc. ....	365 Greco Ave. .... 33146
<b>GEORGIA</b>	<b>EAST POINT</b>	
	East Point Cycle & Key .....	2834 Church St. .... 30344
<b>ILLINOIS</b>	<b>LYONS</b>	
	Keen Edge Co. ....	8615 Ogden Ave. .... 60534
<b>INDIANA</b>	<b>ELKHART</b>	
	Parts & Sales Inc. ....	2101 Industrial Pkwy. ...46514
<b>IOWA</b>	<b>DUBUQUE</b>	
	Power Lawn & Garden Equip. ....	2551 J.F. Kennedy .... 52001
<b>KANSAS</b>	<b>WICHITA</b>	
	Hixon, Inc. ....	3030 Mascot ..... 67204
<b>LOUISIANA</b>	<b>NEW ORLEANS</b>	
	Suhren Engine Co. ....	8330 Earhart Blvd. .... 70118
<b>MARYLAND</b>	<b>TAKOMA PARK</b>	
	Center Supply Co. ....	6867 New Hampshire Ave. 20012
<b>MASSACHUSETTS</b>	<b>SPRINGFIELD</b>	
	Morton B. Collins Co. ....	300 Birnie Ave. .... 01107
<b>MICHIGAN</b>	<b>MOUNT CLEMENS</b>	
	Power Equipment Dist. ....	36463 South Gratiot... 48043
	<b>LANSING</b>	
	Lorenz Service Co. ....	2500 S. Pennsylvania.. 48900
<b>MINNESOTA</b>	<b>MINNETONKA</b>	
	Hance Distributing Inc. ....	11212 Wayzata Blvd. ...55343
<b>MISSISSIPPI</b>	<b>BILOXI</b>	
	Biloxi Sales & Service, Inc. ....	506 Caillavet St. .... 39533
<b>MISSOURI</b>	<b>KANSAS CITY</b>	
	Automotive Equip. Service .....	3117 Holmes St. .... 64109
	<b>ST. LOUIS</b>	
	Henzler, Inc. ....	2015 Lemay Ferry Rd. 63125
<b>NEW YORK</b>	<b>CARTHAGE</b>	
	Gamble Dist., Inc. ....	West End Ave. .... 13619
	<b>SYRACUSE</b>	
	Kimber's, Inc. ....	115 N. Geddes St. .... 13204

## BRIGGS & STRATTON, TECUMSEH AND PEERLESS PARTS AND SERVICE

Briggs & Stratton, Tecumseh and Peerless parts and service should be handled by your nearest authorized engine service firm. Check the yellow pages of your telephone directory under the listing *Engines Gasoline*, Briggs & Stratton or Tecumseh Lauson

<b>NORTH CAROLINA</b>	<b>GREENSBORO</b>	
	Dixie Sales Company .....	327 Battleground Ave.. 27402
	<b>GOLDSBORO</b>	
	Smith Hardware Co. ....	515 N. George St. .... 27530
<b>OHIO</b>	<b>WADSWORTH</b>	
	National Central .....	687 Seville Rd. .... 44281
	<b>CLEVELAND</b>	
	Bleckrie, Inc. ....	7900 Lorain Ave. .... 44102
	<b>CARROL</b>	
	Steb's Mid-State Mower Supply Box 366 .....	43112
	<b>WILLARD</b>	
	Sunshine Wholesale Tire Outlet Route 224 .....	44890
	<b>MANSFIELD</b>	
	McClure Lawn & Garden Supply...1114 Lexington Ave. .	44903
<b>OKLAHOMA</b>	<b>MUSKOGEE</b>	
	Victory Motors, Inc. ....	605 S. Cherokee ..... 74401
	<b>ADA</b>	
	Ada Auto Supply .....	301 E. 12th St. .... 74820
<b>OREGON</b>	<b>PORTLAND</b>	
	Kenton Supply Co. ....	8216 N. Denver Ave. . 97217
<b>PENNSYLVANIA</b>	<b>LANCASTER</b>	
	Raub Supply Co. ....	James & Mulberry Sts...17604
	<b>PITTSBURGH</b>	
	Bluemont Co. ....	11125 Frankstown Rd.. 15235
<b>TENNESSEE</b>	<b>KNOXVILLE</b>	
	Master Repair Service .....	2423 Broadway, N.E. ...37917
	<b>MEMPHIS</b>	
	Memphis Cycle & Supply Co. ....	421 Monroe Ave. .... 38103
	American Sales & Service, Inc. .	1922 Lynnbrook ..... 38116
<b>TEXAS</b>	<b>DALLAS</b>	
	Marr Brothers, Inc. ....	423 E. Jefferson ..... 75203
	<b>HOUSTON</b>	
	Bullard Supply Co. ....	2409 Commerce St. .... 77003
	<b>SAN ANTONIO</b>	
	Catto & Putty, Inc. ....	P.O. Box 2408 .....78206
	<b>FORT WORTH</b>	
	Woodson Sales Corp. ....	1702 N. Sylvania ..... 76111
<b>UTAH</b>	<b>SALT LAKE CITY</b>	
	A-1 Engine & Mower Co. ....	437 E. 9th St. ....84111
<b>VERMONT</b>	<b>BURLINGTON</b>	
	Vermont Appliance Co. ....	44 Lakeside Ave. ....05401
<b>VIRGINIA</b>	<b>RICHMOND</b>	
	RBI Corp. ....	963 Myers St. .... 23260
<b>WASHINGTON</b>	<b>SEATTLE</b>	
	Bailey's Rebuild, Inc. ....	1325 E. Madison St. ...98102
<b>WEST VIRGINIA</b>	<b>CHARLESTON</b>	
	Young's, Inc. ....	233 Virginia St., E. ...25301
<b>WISCONSIN</b>	<b>APPLETON</b>	
	Automotive Supply Co. ....	123 S. Linwood Ave. ...54911

## WARRANTY PARTS AND SERVICE POLICY

The purpose of warranty is to protect the customer from defects in workmanship and materials, defects which are NOT detected at the time of manufacture, It does not provide for the unlimited and unrestricted replacement of parts. Use and maintenance are the responsibility of the customer. The manufacturer cannot assume responsibility for conditions over which it has no control. Simply put, if it's the manufacturer's fault, it's the manufacturer's responsibility; if it's the customer's fault, it's the customer's responsibility.

### CLAIMS AGAINST THE MANUFACTURER'S WARRANTY INCLUDES

1. Replacement of Missing Parts on new equipment.
2. Replacement of Defective Parts within the warranty period.
3. Repair of Defects within the warranty period.

All claims MUST be substantiated with the following information:

1. Model Number of unit involved.
2. Date unit was purchased or first put into service.
3. Date of failure.
4. Nature of failure.