

Owner's Operating Service Instruction Manual

10¢

**Model No.
126-570A**

- ASSEMBLY
- OPERATION
- REPAIR PARTS

26" HI WHEEL ROTARY MOWER

IMPORTANT

It is suggested that this manual be read in its entirety before attempting to assemble or operate. Keep this manual in a safe place for future reference and for ordering replacement parts.

This unit is shipped WITHOUT GASOLINE or OIL. After assembly, see operating section of this manual for proper fuel and amount.

SAFE OPERATION PRACTICES FOR WALK-BEHIND MOWERS

TRAINING

1. Read the Operating and Service Instruction Manual carefully. Be thoroughly familiar with the controls and the proper use of the equipment.
2. Never allow children to operate a power mower.
3. Keep the area of operation clear of all persons, particularly small children and pets.

PREPARATION

1. Thoroughly inspect the area where the equipment is to be used and remove all stones, sticks, wire, bones and other foreign objects.
2. Do not operate equipment when barefoot or wearing open sandals. Always wear substantial footwear.
3. Check the fuel before starting the engine. Do not fill the gasoline tank indoors, when the engine is running, or while the engine is still hot. Wipe off any spilled gasoline before starting the engine.
4. Disengage the self-propelled mechanism or drive clutch on units so equipped before starting the engine.
5. Never attempt to make a wheel adjustment while the engine is running.
6. Mow only in daylight or in good artificial light.
7. Never operate the equipment in wet grass. Always be sure of your footing; keep a firm hold on the handle and walk, never run.

OPERATION

1. Do not change the engine governor settings or overspeed the engine.
2. Do not put hands or feet near or under rotating parts. Keep clear of the discharge opening at all times.
3. Stop the blade(s) when crossing gravel drive, walks or roads.
4. After striking a foreign object, stop the engine, remove the wire from the spark plug, thoroughly inspect the mower for any damage, and repair the damage before restarting and operating the mower.

5. If the equipment should start to vibrate abnormally, stop the engine and check immediately for the cause. Vibration is generally a warning of trouble.
6. Stop the engine whenever you leave the equipment, before cleaning the mower housing, and when making any repairs or inspections.
7. When cleaning, repairing or inspecting, make certain the blade and all moving parts have stopped. Disconnect the spark plug wire, and keep the wire away from the plug to prevent accidental starting.
8. Do not run the engine indoors.
9. Shut the engine off and wait until the blade comes to a complete stop before removing the grass catcher or unclogging chute.
10. Mow across the face of slopes, never up-and-down. Exercise extreme caution when changing direction on slopes. Do not mow excessively steep slopes.
11. Always disconnect electric mowers (line operated) before cleaning, repairing or adjusting.
12. Never operate mower without proper guards, plates or other safety protective devices in place.
13. Keep washout ports and other mower-housing service openings closed when mowing.

MAINTENANCE AND STORAGE

1. Check the blade and engine mounting bolts at frequent intervals for proper tightness.
2. Keep all nuts, bolts, and screws tight to be sure the equipment is in safe working condition.
3. Never store the equipment with gasoline in the tank inside of a building where fumes may reach an open flame or spark. Allow the engine to cool before storing in any enclosure.
4. To reduce fire hazard, keep the engine free of grass, leaves, or excessive grease.
5. Check the grass catcher bag frequently for wear or deterioration. Replace with new bag for safety protection.

ASSEMBLY INSTRUCTIONS

PARTS IDENTIFICATION

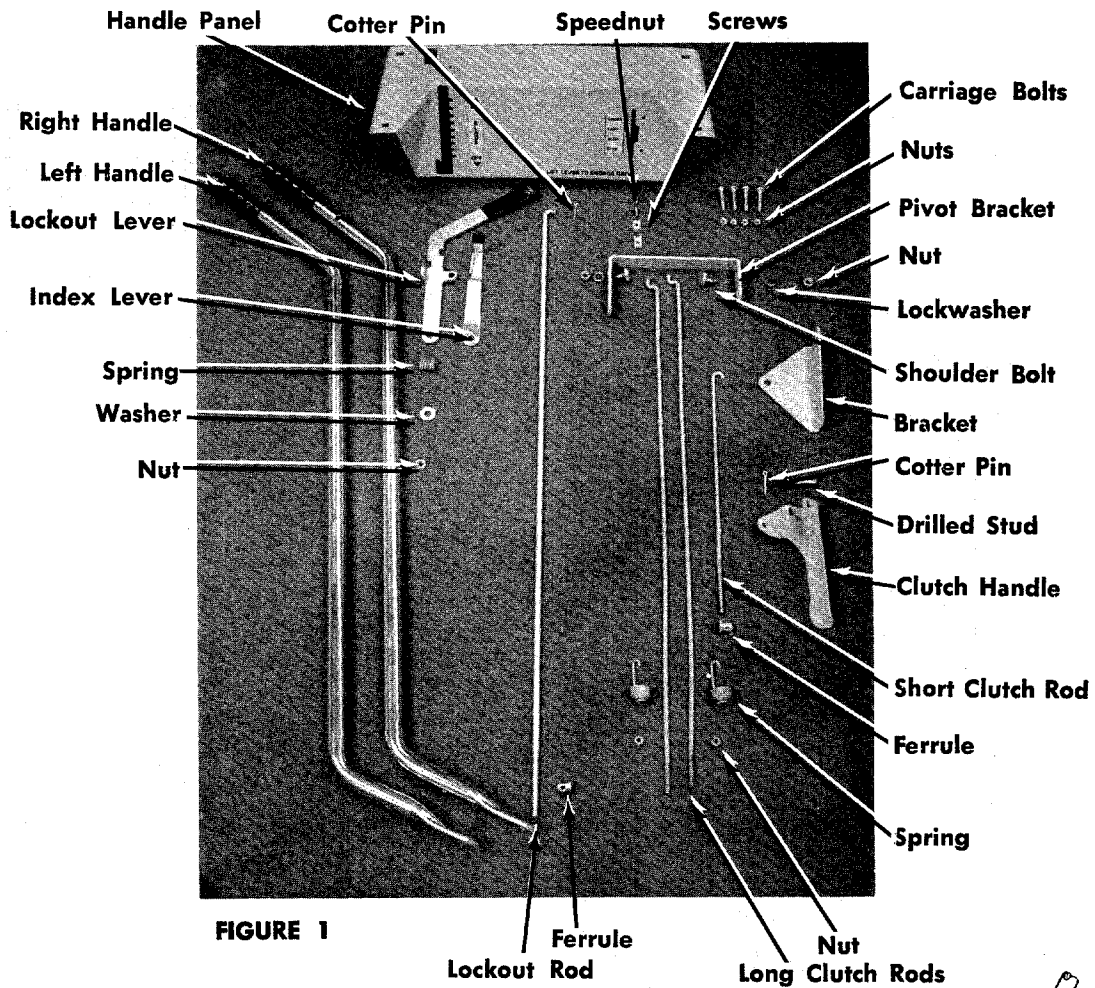


FIGURE 1

1. Remove the nuts, lockwashers and spacers on the four studs on the rear frame of the mower. See figure 2.
2. Place the left handle over the two studs on the left side of the mower.



NOTE

The right handle has a hole near the grip for the clutch handle.

3. Place a lockwasher and nut on each stud. Tighten only finger tight at this time.
4. Assemble the right handle in the same manner.

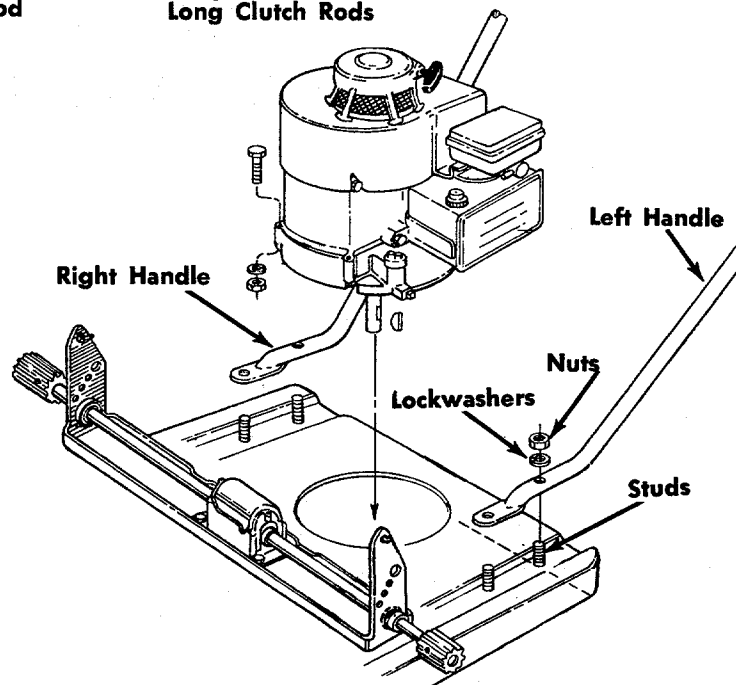


FIGURE 2

5. Assemble the handle panel and bracket to the right handle using two of the carriage bolts and nuts. See figure 3.



The bracket must be assembled with the wide side up as shown in figure 3.

6. Assemble the handle panel to the left handle with the other two carriage bolts and nuts.

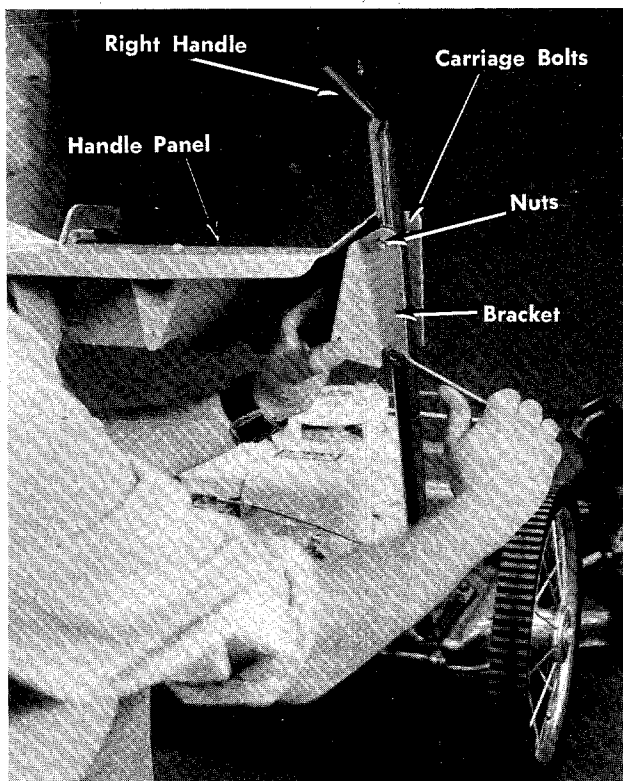


FIGURE 3

7. Tighten the four nuts holding the left and right handle to the frame. See figure 2.
8. Assemble the throttle control to the handle panel with the two speednuts and screws. See figure 4.
9. If the lockout lever and index lever are not pre-assembled, they must be assembled to the bracket welded to the left side of the handle panel. Place the index bracket over the stud with the black plastic grip facing the right. See figure 4.

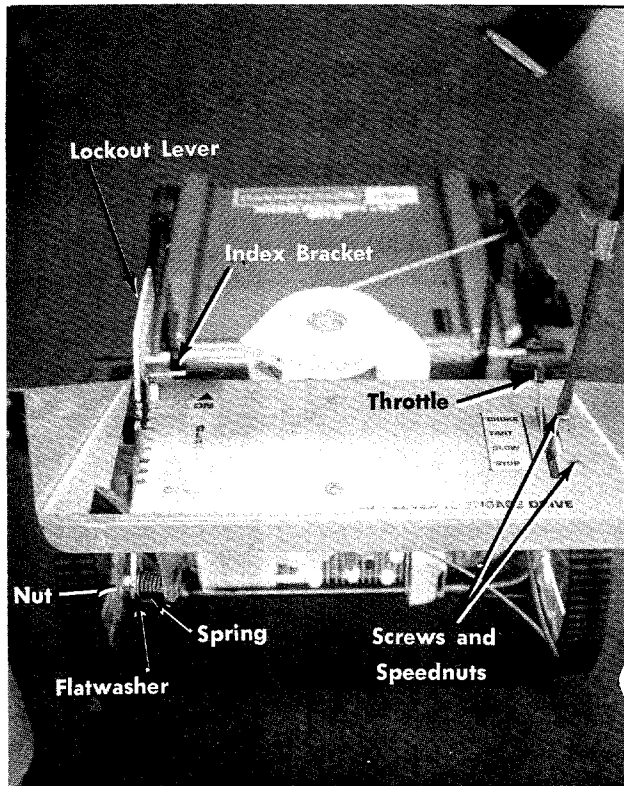


FIGURE 4

10. Put the spring, flatwasher and lockout lever, in that order, over the stud and tighten the nut until the end of the stud is flush with the top of the nut. See figure 4.



The black grip on the lockout lever faces the front of the mower.

11. Remove the cotter pin from the ferrule on the deck. Put the hooked end of the lockout rod through the hole on the front of the handle panel and screw the lockout rod into the ferrule until approximately 1 1/4 inches of thread extend through the ferrule. See figure 5.
12. Place the hooked end of the lockout rod into hole in the lockout lever and secure it with cotter pin. See figure 6.



CAUTION

The final adjustment of the lockout lever must be made before the engine is started. Final adjustment will be covered in step 19.

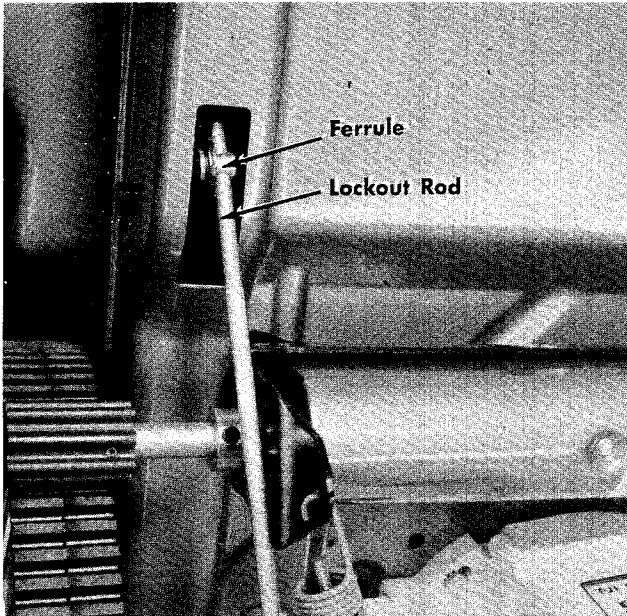


FIGURE 5

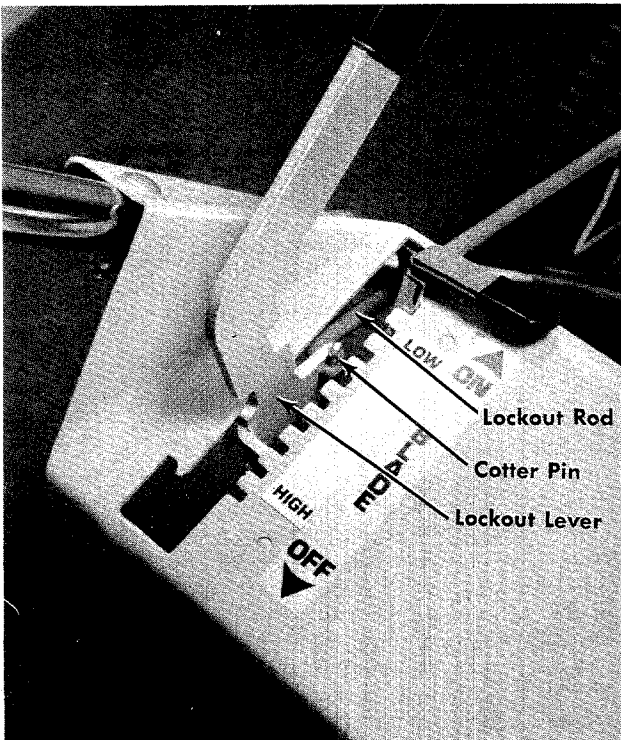


FIGURE 6

13. Assemble the two long clutch rods to the oblong hole on the long side of the pivot bracket. Hook the rods, with the right rod on the bottom, as shown in figure 7.

14. Assemble the pivot bracket, with the long side to the left, with two shoulder bolts, lockwashers and nuts. See figure 8.

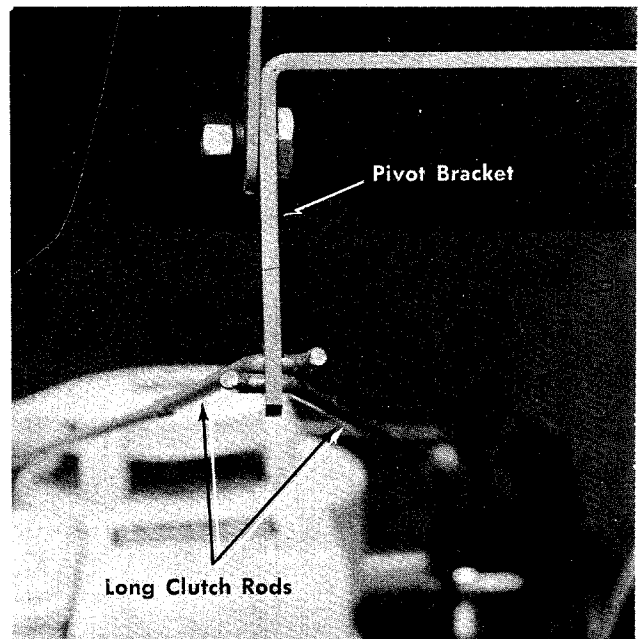


FIGURE 7



NOTE

Assemble both shoulder bolts from the inside as shown in figure 8.

15. Slide the springs over the threaded end of the long clutch rods and screw the nuts on until $\frac{3}{4}$ " of threads are extended through the nuts. See figure 9.



CAUTION

The final adjustment of the clutch rod must be made before the engine is started. Final adjustment is covered in step 18.

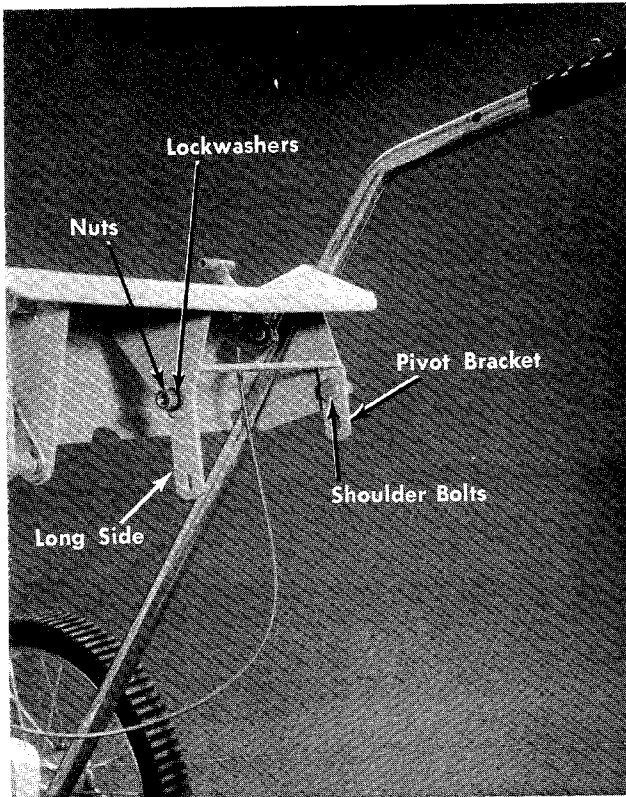


FIGURE 8

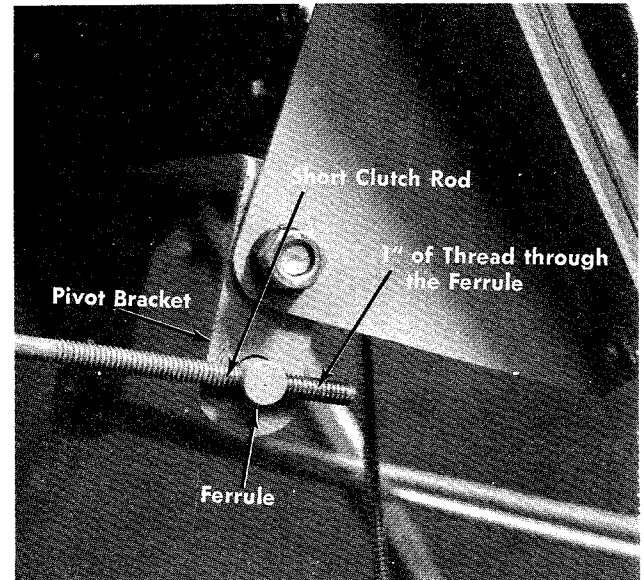


FIGURE 10

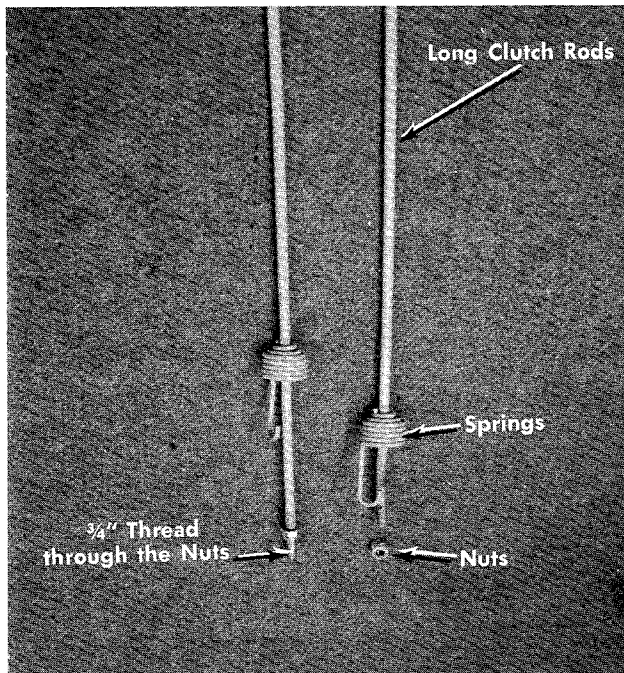


FIGURE 9

16. Place the ferrule through the round hole in the pivot bracket and screw the short clutch rod into the ferrule until 1" of thread extends through the ferrule. See figure 10.
17. Hook the clutch handle to the hooked end of the short clutch rod and assemble the clutch handle to the right handle with the drilled stud and cotter pin. See figure 11.

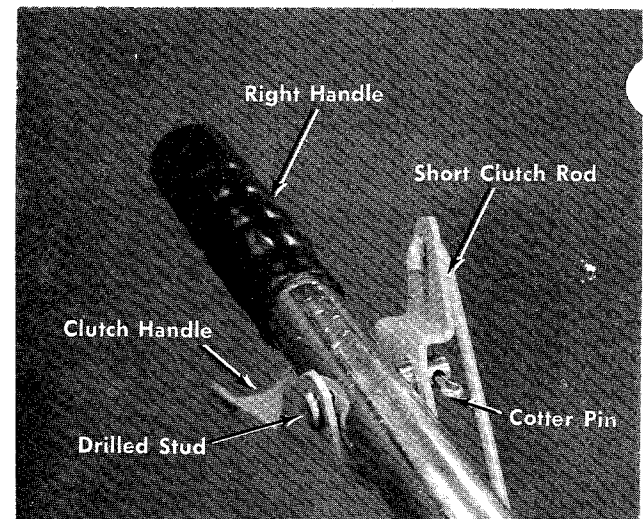


FIGURE 11

18. Final Adjustment—Clutch (Engine Off)

With the clutch handle released as shown in figure 11, the drive pinion should not touch the wheels. When you squeeze the clutch handle the pinions should engage solidly into the tread of the wheels. If the pinions touch the wheels with the clutch handle released, take out the drilled stud and unscrew the short clutch rod from the ferrule. If the pinions do not engage solidly into the wheels, screw the short control rod further into the ferrule.

19. Final Adjustment—Lockout Lever

Put the lockout lever in the OFF position. If the lockout lever cannot be pulled back into the OFF position, remove the cotter pin and unscrew the lockout rod. Reassemble and test. See figures 6 and 12.

Start the engine as explained in the engine manual and check the blade to see if it is turning. If the blade rotates, shut the engine off immediately, remove the cotter pin in the lockout rod and screw the lockout rod out a few turns. Reassemble and test.

OPERATION

1. Check the lubricant level in the gear box. This must be maintained half full at all times and should be checked after each 25 hours of operation. See the Lubrication section of this manual.
2. Check steps 18 and 19 of the Assembly Instructions to be sure the clutch and blade disengagement controls are working properly.
3. Service the engine with gasoline and oil as outlined in the engine manual. See the engine manual for complete care and maintenance of engine. Use regular grade of gasoline (either leaded or unleaded) and fill the engine crankcase with the proper grade of oil.



CAUTION

DO NOT mix the oil and gasoline.

4. Move the lockout lever to the OFF position. See figure 12.
5. Move the throttle control to the CHOKE position. See figure 12.
6. With one foot on the deck, grasp the recoil starter handle and pull out rapidly. Allow the rope to re-wind slowly. If the engine does not start after two or three tries, move the throttle control to the FAST position and try again.
7. After the engine starts, move the throttle control into the FAST position.
8. The lockout lever is on the left side of the handle panel. It is used to engage the blade. The indicator lever is located on the lower part of the deck lever. It is used to set the mower deck at the desired cutting height. Forward position is for the lowest cutting height. Rear position is for the highest cutting height.
9. The clutch handle is located on the right handle of the mower. Squeezing the clutch handle engages the drive pinions of the wheels. Release the clutch handle and the forward motion of the mower stops. You must release the clutch handle to make a turn.

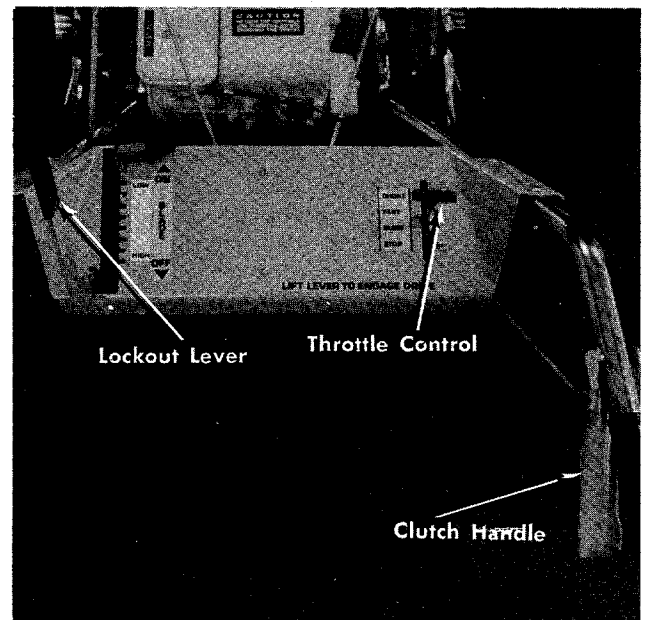


FIGURE 12

10. The throttle control is located on the right hand side of handle panel. This controls engine speed.
11. Fast engine speeds produce better cutting conditions. However, unit should be run at slower speeds until operator is thoroughly familiar with controls.
12. Never attempt to clean or make any adjustments with the engine running.
13. A brief break-in period is essential to insure maximum engine at half speed for a period of time required to use one tank of gasoline. It is also recommended to change crankcase oil after the first five hours of operation. After the initial change, oil should be changed every twenty-five hours of operation or as operating conditions dictate. Always check oil before operating the mower. **BE SURE CRANKCASE IS FULL!**
14. Proper lubrication must be maintained at all times.
15. Appropriate clothing should be worn when cutting brush or heavy weeds. Safety shoes and safety glasses are highly recommended.
16. The engine is stopped by moving the throttle control lever to "STOP" position.
17. The blade is stopped by moving the lockout lever to the OFF position.

LUBRICATION AND MAINTENANCE



IMPORTANT

Always stop engine and disconnect spark plug wire before cleaning, lubricating or doing any kind of work on lawn mower.

LUBRICATION

1. **Wheels**—Wheel bearings are ball bearing. Lubricate periodically with a few drops of oil (SAE No. 10 or 20).
2. **Throttle**—Periodically lubricate throttle control lever and throttle wire assembly with a few drops of light oil (SAE No. 10 or 20) for ease of operation.
3. **Engine**—Follow engine manual for lubrication instructions.
4. **Gear Box**—Check lubricant in the gear box. This must be maintained half full at all times and should be checked prior to each mowing. The gear box is packed at the factory with Alduralube Heavy or Temprite No. 2. It is suggested that this or an equivalent type and quality fibrous high heat wheel bearing grease be used in maintaining this mechanism.
5. **Chute Deflector**—The torsion spring and pivot point should be lubricated periodically with light oil to prevent any rust or binding. Deflector must work freely.
6. Lubricate all other linkage after every 25 hours of operation with SAE 10 or 20 oil.
7. The blade spindle bearings are sealed and require no further lubrication.

MAINTENANCE

1. **Cutting Blade**—The blade may easily be removed for grinding or replacement as follows:
 - a) Remove bolts and lockwashers holding blade and blade adapter to blade spindle shaft.
 - b) Remove blade and blade adapter from blade spindle shaft.
 - c) Remove two bolts, lockwashers and nuts holding blade to blade adapter (if necessary).

When sharpening blade, follow the original angle of grind as a guide. It is extremely important that each cutting edge receives an equal amount of grinding to prevent an unbalanced blade. An unbalanced blade will cause excessive vibration when rotating at high speeds and may cause damage to the mower.



NOTE

To insure safe operation of your unit, ALL nuts and bolts must be checked periodically for correct tightness.

2. **Deck**—The underside of the mower deck should be cleaned after each period of use as grass clippings, leaves, dirt, and other matter accumulates. This accumulation of grass clippings, etc., is undesirable as it will invite rust and corrosion and may cause an uneven discharge of grass clippings at next cutting. The deck may be cleaned by tilting the mower backward or on its side and scraping clean with a suitable tool or by washing with a stream of water from a garden hose.



CAUTION

Do not direct the stream of water at a hot engine as damage to the engine may result.

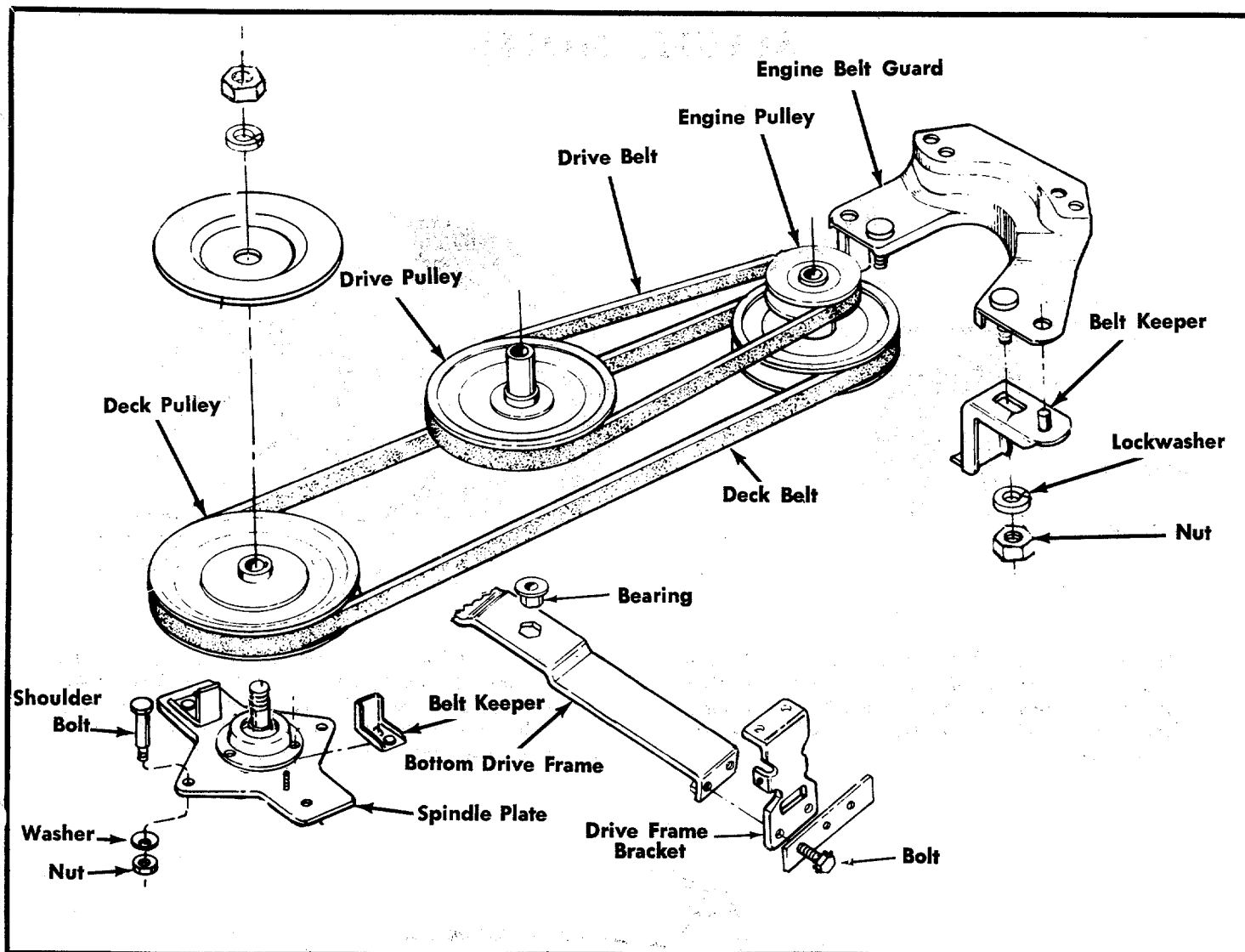


FIGURE 13

REMOVING THE DECK BELT (See figure 13.)

1. Place the lockout lever in the ON position.
2. Remove the two belt keepers and shoulder bolt on the deck pulley.
3. Remove the two belt keepers on the engine pulley.
4. Place the lockout lever in the OFF position.
5. Remove the belt.
6. Reassemble in reverse order with the new belt.

REMOVING THE DRIVE BELT (See figure 13.)

1. Remove the belt keepers on the engine pulley.

2. Place the lockout lever in the OFF position.
3. Unhook the deck belt from the engine pulley.
4. Remove the engine belt guard.
5. Remove the bottom drive frame by removing the two bolts on each end.
6. Roll the belt over the drive pulley.

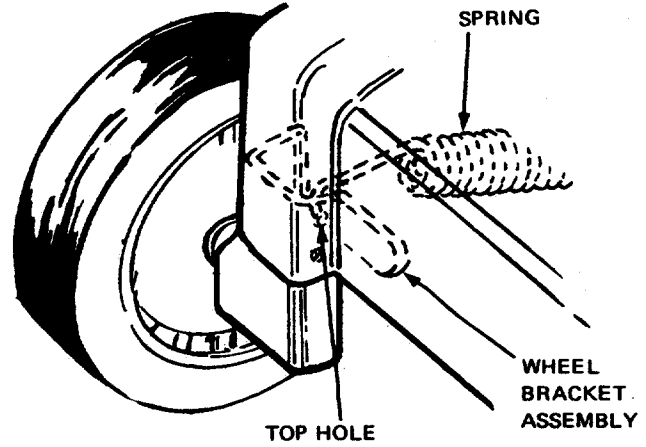
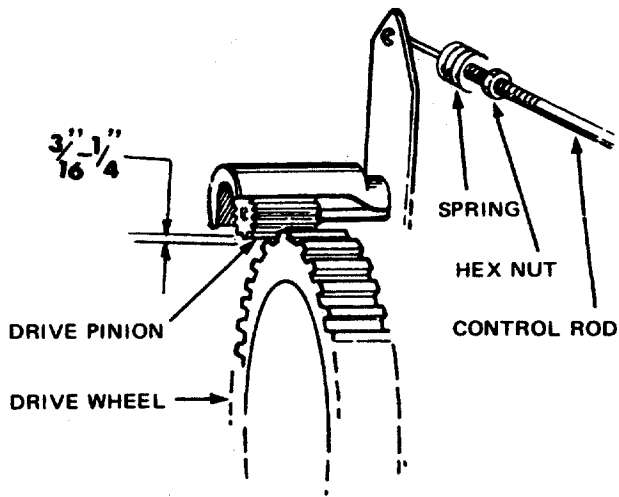


CAUTION

This pulley is under tension. Release the tension slowly as you remove the belt.

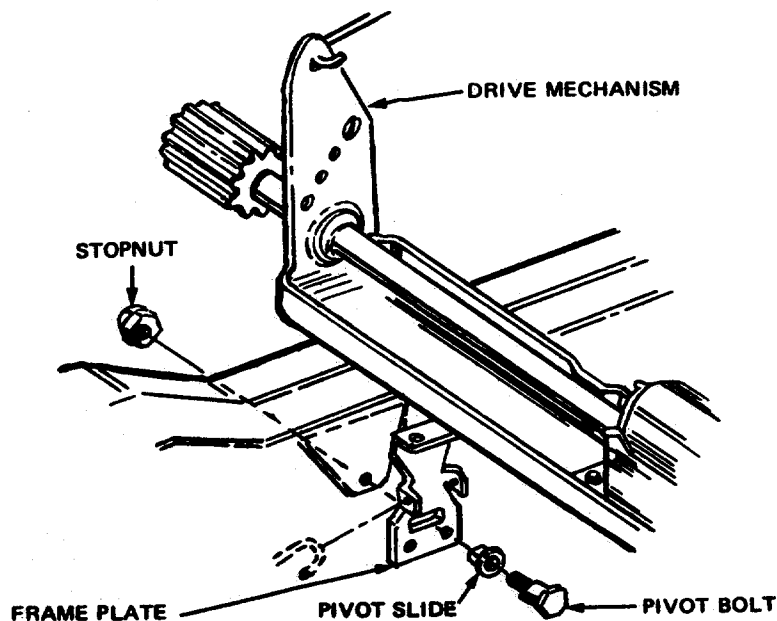
7. Reassemble in reverse order with the new belt.

SERVICE NOTES



Clearance between Drive Pinion and Drive Wheel should be $\frac{3}{16}$ " to $\frac{1}{4}$ " when control is in "DIS-ENGAGED" position. Adjust Hex Nut on Control Rod as required. Excess clearance will cause premature belt wear.

The right hand Deck Extension Spring must be assembled over the top of the Wheel Bracket Assembly and attached through the top mounting hole. Assembly otherwise will prevent correct disengagement when raising the deck.



If Drive Mechanism does not pivot freely on frame plates, loosen stop nuts on each side. Belts will damage and wear prematurely if mechanism does not move freely.



NOTE

The manufacturer **DOES NOT** recommend the use of any accessory on this rotary mower other than those manufactured by MID Products Inc.



IMPORTANT

After striking a foreign object, stop the engine, remove wire from spark plug, thoroughly inspect the mower for any damage, and repair the damage before re-starting and operating the mower.

GRASS CATCHER Model No. 196-015A is available as optional equipment for the mower shown in this manual.



WARNING

1. The mower should not be operated without the entire grass catcher or chute deflector in place.
2. The mower should not be operated without the protective shield on the rear of the deck in place.

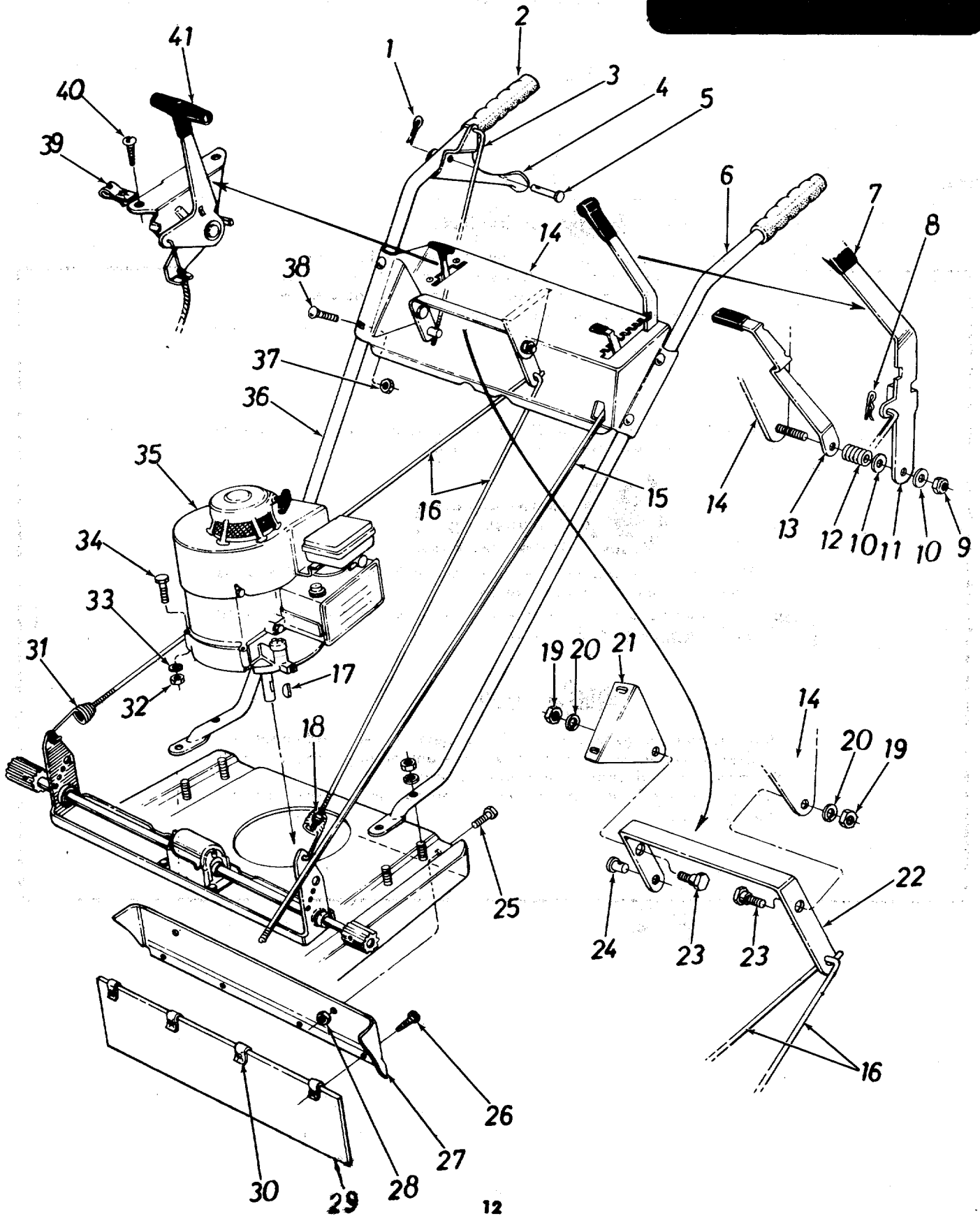


NOTE:

Under normal usage bag material is subject to wear, and should be checked periodically. Be sure any replacement bag complies with the mower manufacturer's recommendations. For replacement bags, use only factory authorized replacement bag NO. 764-0121.

126-570A

IF YOU WRITE TO US ABOUT THIS ARTICLE
OR IF YOU ORDER REPLACEMENT PARTS AL-
WAYS MENTION THIS MODEL & SERIAL NO
MODEL



PARTS LIST FOR MODEL 126-570A

REF. NO.	PART NO.	COLOR CODE	DESCRIPTION	NEW PART
1	714-0104		Hair Pin Cotter 5/16" Dia.	
2	01166		Grip	
3	747-0163		Clutch Rod	
4	12572		Clutch Grip	
5	711-0415		Clevis Pin	
6	749-0185		Handle—L.H.	
7	720-0142		Flat Grip (For Lift Lever)	
8	714-0507		Cotter Pin*	
9	712-0116		Hex Elastic Stopnut 3/8-24 Thd.	
10	736-0300		Flat Wash. .39 I.D.	
11	10324		Lift Lever	
12	732-0193		Compression Spring	
13	10325		Indicator	
14	12568 —463		Control Panel Ass'y.	
15	711-0424		Deck Rod	
16	747-0162		Lockout Rod	
17	714-0365		#6 Hi-Pro-Key 5/32 x 5/8" Dia.	
18	712-0324		Hex Elastic Stopnut 1/4-20 Thd.	
19	712-0798		Hex Nut 3/8-16 Thd.*	
20	736-0169		L.-Wash. 3/8" Scr.*	
21	12571 —463		Bracket	
22	12570 —463		Link Bracket	
23	738-0183		Shld. Scr. .500 Dia. x .215	
24	711-0619		Adj. Ferrule 1/4-20 Thd.	
25	710-0567		Hex Scr. 1/4-28 x .62" Lg.	
26	710-0436		Hex Hd. Tapp. Scr. 10Z x .62" Lg.	
27	12548 —463		Drag Shield Adapter	
28	712-0138		Hex Nut 1/4-28 Thd.	
29	735-0182		Drag Shield	
30	726-0150		Speed Nut 10Z "U" Type	
31	732-0305		Extension Spring	
32	712-0123		Hex Nut 5/16-24 Thd.*	
33	736-0119		L.-Wash. 5/16" Scr.*	
34	710-0158		Hex Scr. 5/16-24 x 1.25" Lg.*	
35	—		Engine	
36	749-0184		Handle—R.H.	
37	712-0429		Hex Cent. L.-Nut 5/16-18 Thd.	
38	710-0262		Carriage Bolt 5/16-18 x 1.50" Lg.*	
39	712-0526		Speed Nut #10	
40	710-0224		Hex Self Tap Scr. Type (A) #10 x .50" Lg.	
41	746-0161		Throttle Control Assy.— Comp.	

*For faster service obtain standard nuts, bolts and washers locally. If these items cannot be obtained locally, order by part number and size as shown on parts list.

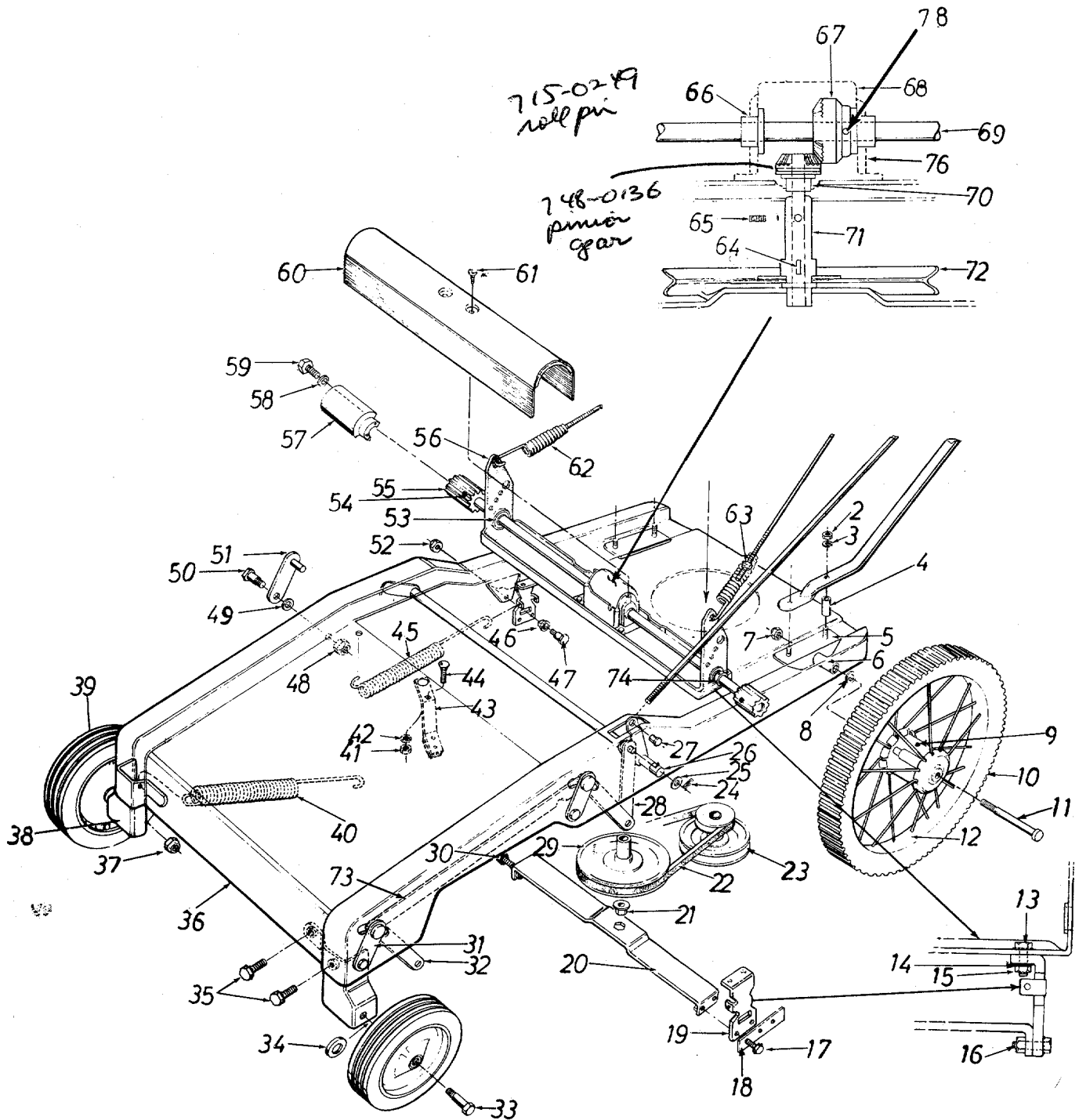
(463—Top Flite Red)

When ordering parts, if color or finish is important use the appropriate color code shown above. (e.g. Top Flite Red Finish—10292 (463))

NOTE: The engine is not covered by warranty by the mower manufacturer . . . If repairs or service is needed on the engine, please contact your nearest authorized engine service outlet. Check the "Yellow Pages" of your telephone book under "Engines—Gasoline."



126-570A



Gear box is lubricated with two ounces of Alduralube Heavy. Order by part number 727-0111.

NOTE

- To engage the blade with the engine running...
1. Move the throttle control lever to "FAST" position.
 2. Engage the blade engagement lever SLOWLY.
 3. Adjust engine speed.

PARTS LIST FOR MODEL 126-570A

REF. NO.	PART NO.	COLOR CODE	DESCRIPTION	NEW PART	REF. NO.	PART NO.	COLOR CODE	DESCRIPTION	NEW PART
2	712-0798		Hex Nut 3/8-16 Thd.*		38	10294		Front Wheel Brkt. Ass'y.—R.H.	
3	736-0169		Spring L-Wash. 3/8" Scr.*					Front Wheel Brkt. Ass'y.—L.H.	
4	—		Spacer Used in Shipment Only			10293		Front Wheel Ass'y.—Comp.	
5	10297		Rear Wheel Brkt. Ass'y.—L.H.		39	734-0643		Extension Spring	
	10298		Rear Wheel Brkt. Ass'y.—R.H.		40	732-0153		Hex Nut 1/4-20 Thd.*	
6	711-0425		Spacer—Rear Axle		41	712-0287		Spring L-Wash. 1/4" Scr.*	
7	712-0181		Top Locknut 3/8-16 Thd.*		42	736-0329		Blade Brake Ass'y.	
8	736-0192		Flat Washer .53 I.D.*		43	761-0148		Carriage Bolt 1/4-20 x .62" Lg.	
9	718-0132		Oil Cap (One Each Rear Wheel)		44	710-0134		Extension Spring	
10	734-0391		Tire Only 16 x 1.75 (Rear Wheel)		45	732-0206		Pivot Slide	
	734-0180		Rear Wheel Ass'y.—Less Tire		46	748-0180		Shoulder Bolt 5/16-18 Thd.	
11	738-0114		Axle Bolt—Rear Wheel		47	711-0105		Hex Elastic Stopnut 5/16-18*	
12	734-0424		Rear Wheel Ass'y.—Comp.		48	712-0429		Flat Washer .33 I.D. x 3/4 O.D.	
13	710-0198		Sems Hex Hd. Cap Scr. 5/16-18 x 3/4" Lg.*		49	736-0264		Shoulder Bolt 5/16-18*	
14	736-0119		Spring L-Wash. 5/16" Scr.*		50	738-0141		Pivot Link Ass'y.	
15	712-0267		Hex Nut 5/16-18 Thd.*		51	09721		Hex Elast. S-Nut 5/16-18 Thd.*	
16	710-0322		Sems Hex Hd. Cap Scr. 5/16-18 x 1" Lg.*		52	712-0429		Ball Bearing .627 I.D.	
17	710-0322		Sems Hex Hd. Cap Scr. 5/16-18 x 1" Lg.*		53	741-0138		Roll Pin 3/16" Dia. x 1" Lg.*	
18	10883		Drive Frame Stop		54	715-0120		Drive Pinion	
19	10320		Bottom Drive Frame Plate		55	748-0182		Top Drive Frame	
20	10328		Bottom Drive Frame Ass'y.		56	10321		Pinion Cover	
21	748-0226		Flange Bearing 1/2" Dia.		57	10289		Spring L-Wash. #10 Scr.*	
22	754-0143		Belt 3V x 28" Lg. (Drive Belt)		58	736-0722		Hex Hd. Self Tap Scr. Type (A) #10 x 1/2" Lg.*	
23	756-0154		Two-Step Pulley (Engine)		59	710-0224		Cover—Top Drive Frame	
24	714-0101		Hair Pin		60	08100		Hex Hd. Slotted Thd. Cut Scr. #8-32 x 3/8" Lg.*	
25	736-0192		Flat Washer .53 I.D.		61	710-0148		Spring	
26	10300		Lift Handle Ass'y.		62	732-0184		Hex Elastic Stopnut 1/4-20 Thd.	
27	711-0179		Adjustment Ferrule		63	712-0324		Woodruff Key #2	
28	10318		Deck Link 3 3/4" Lg.		64	714-0229		Allen Set Scr. 5/16-18 x 1/4" Lg.*	
29	756-0155		Pulley 6 1/2" Dia. (Drive Pulley)		65	710-0421		Flange Bearing 5/8" Dia.	
30	710-0198		Sems Hex Hd. Cap Scr. 5/16-18 x 3/4" Lg.*		66	748-0110		Bevel Gear	
31	09721		Pivot Link Ass'y.		67	748-0135		Gear Box Cover	
32	10317		Deck Link 4 3/4" Lg.		68	07716		Drive Shaft	
33	710-0427		Hex Scr. 3/8-16 x 2.00" Lg.*		69	10322		Flange Bearing 1/2" Dia.	
34	736-0105		Belleville Washer		70	748-0108		Pinion Ass'y.	
35	710-0259		Sems Hex Hd. Cap Scr. 5/16-18 x 5/8" Lg.*		71	10254		Pulley 6 1/2" Dia. (Drive Pulley)	
36	10292 —463		Frame Ass'y.		72	756-0155		Connecting Rod	
37	712-0181		Top L-Nut 3/8-16 Thd.*		73	10319		Collar 5/8" Dia.	
					74	711-0169		Gear Box	
					75	717-0108		Front Wheel Bearing .38 I.D. (Not Shown)	
					76	741-0178		Spring Pin Spirol 3/16" Dia. x 1.25" Lg.	
					77				
					78	715-0246			

*For faster service obtain standard nuts, bolts and washers locally. If these items cannot be obtained locally, order by part number and size as shown on parts list.

(463—Top Flite Red)

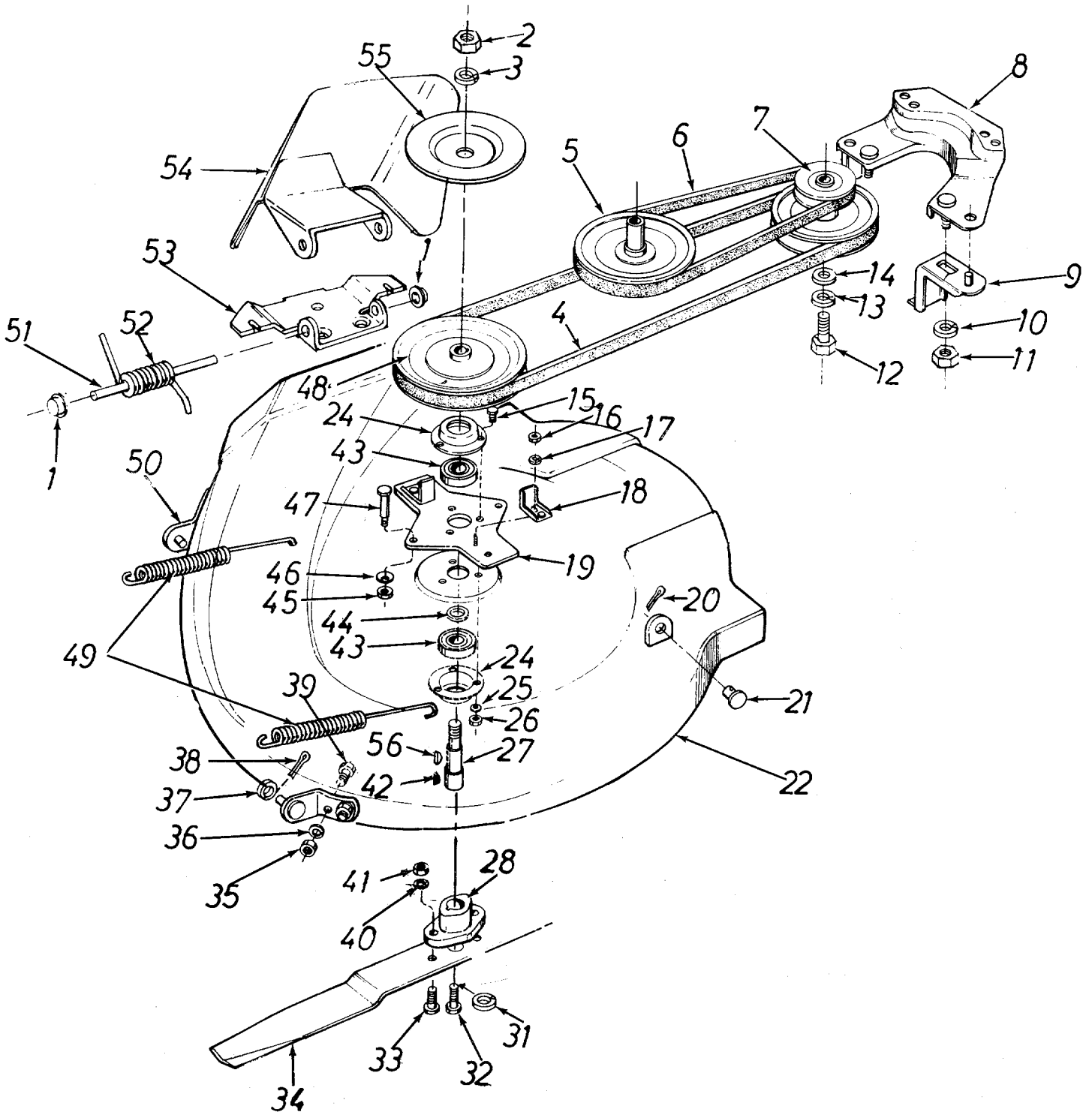
When ordering parts, if color or finish is important, use the appropriate color code shown above. (e.g. Top Flite Red Finish—10292 (463))

NOTE: The engine is not under warranty by the mower manufacturer . . . If repairs or service is needed on the engine, please contact your nearest authorized engine service outlet. Check the "Yellow Pages" of your telephone book under "Engines—Gasoline."



126-570A

ILLUSTRATION FOR DECK AND PULLEY SYSTEM



PARTS LIST FOR DECK AND PULLEY SYSTEM MODEL NO. 126-570A

REF. NO.	PART NO.	COLOR CODE	DESCRIPTION	NEW PART	REF. NO.	PART NO.	COLOR CODE	DESCRIPTION	NEW PART
1	726-0106		Push-on Flange Palnut		28	10769		Blade Adapter Kit	
2	712-0242		Hex Jam Nut 5/8-11 Thd.		31	736-0217		Spring Lockwasher 3/8" Scr. Heavy Duty	
3	736-0158		Spring Lockwasher 5/8" Scr.*		32	710-0459		Hex Hd. Cap Scr. 3/8-24 x 1 1/2" Lg. Heat Treated	
4	754-0144		V-Belt 21/32 x 55" Lg. (Blade Drive Belt)		33	710-0117		Hex Hd. Cap Scr. 5/16-24 x 1" Lg. Heat Treated	
5	756-0155		Pulley 6 1/2" Dia. (Drive Pulley)		34	742-0147		Blade 26 inch	
6	754-0143		Belt 3V x 28" Lg. (Drive Belt)		35	712-0287		Hex Nut 1/4-20 Thd.*	
7	756-0154		Two-Step Engine Pulley		36	736-0329		Spring Lockwasher 1/4" Scr.*	
8	10423		Belt Guard Cup Assembly		37	736-0192		Flat Washer .53 I.D.*	
9	10426		Belt Keeper Assembly		38	714-0115		Cotter Pin 1/8" Dia.*	
10	736-0119		Spring Lockwasher 5/16 Scr.*		39	710-0258		Hex Hd. Cap Scr. 1/4-20 x .62" Lg.*	
11	712-0267		Hex Nut 5/16-18 Thd.*		40	736-0119		Spring L-Wash. 5/16" Scr.*	
12	710-0152		Hex Hd. Cap Scr. 3/8-24 x 1" Lg.*		41	712-0123		Hex Nut 5/16-24 Thd.*	
13	736-0169		Spring Lockwasher 3/8" Scr.*		42	714-0365		#6 Key Hi Pro 5/32 x 5/8" Dia.	
14	07386		Flat Washer .39 I.D. x 1 3/4" O.D.		43	741-0919		Ball Bearing	
15	710-0322		Sems Hex Hd. Cap Scr. 5/16-18 x 1" Lg.*		44	750-0142		Spacer—Blade Spindle	
16	712-0267		Hex Nut 5/16-18 Thd.*		45	712-0267		Hex Nut 5/16-18 Thd.*	
17	736-0119		Spring Lockwasher 5/16" Scr.*		46	736-0105		Belleville Washer	
18	10426		Belt Keeper Assembly		47	738-0129		Shoulder Bolt .498 Dia. x 2.005" Lg.	
19	11543		Deck Belt Guard Plate Ass'y.		48	756-0143		Deck Pulley	
20	714-0115		Cotter Pin 1/8" Dia.*		49	732-0153		Extension Spring	
21	711-0332		Lift Bracket Pin		50	10306		Deck Bracket Ass'y.—R.H.	
22	11087 —463		Deck Assembly			10305		Deck Bracket Ass'y.—L.H.	
23	741-0163		Bearing Housing Assembly (Includes Ref. No.'s 24 & 43)		51	711-0571		Pivot Pin	
24	08253		Housing		52	732-0261		Torsion Spring	
25	736-0119		Spring L-Wash. 5/16" Scr.*		53	11399 —463		Adapter Plate	
26	712-0267		Hex Nut 5/16-18 Thd.*		54	11634 —463		Chute Deflector Ass'y. Comp.	
27	711-0405		Blade Spindle		55	11073		Blade Brake Disc	
					56	714-0388		#6 Key Hi Pro 3/16 x 5/8" Dia.	

*For faster service obtain standard nuts, bolts and washers locally. If these items cannot be obtained locally, order by part number and size as shown on parts list.

(463—Top Flite Red)

When ordering parts, if color or finish is important, use the appropriate color code shown above. (e.g. Top Flite Red Finish—10292 (463))

NOTE: The engine is not under warranty by the mower manufacturer . . . If repairs or service is needed on the engine, please contact your nearest authorized engine service outlet. Check the "Yellow Pages" of your telephone book under "Engines—Gasoline."

**Find It Fast
In The
Yellow Pages**

PARTS INFORMATION

POWER EQUIPMENT PARTS AND SERVICE

Parts and service for all MTD manufactured power equipment are available through the authorized service firms listed below. All orders should specify the model number of your unit, parts numbers, description of parts and the quantity of each part required.

ALABAMA	BIRMINGHAM	
	Auto Electric & Carburetor Co.	2625 4th Ave. S. 35233
ARKANSAS	NORTH LITTLE ROCK	
	Sutton's Lawn Mower Shop Rt. 4, Box 368 72117
	FORT SMITH	
	Mity Mite Motors, Inc. 2515 Towson Ave. 72901
CALIFORNIA	SAN BERNARDINO	
	Lawn Mower Supply Co. 25608 E. Baseline 92410
	SAN FRANCISCO	
	J.W. Jewett Co. 981 Folsom St. 94107
	SACRAMENTO	
	Luttig & Severson 2030 28th St. 95818
COLORADO	DENVER	
	South Denver Lawn Equip. 527 West Evans 80223
CONNECTICUT	SUFFIELD	
	The Jones & Ramsey Co. 850 Thompsonville Rd. 06078
FLORIDA	JACKSONVILLE	
	Radco Distributors 2403 Market St. 32206
	CORAL GABLES	
	Moz-All of Florida, Inc. 365 Greco Ave. 33146
GEORGIA	EAST POINT	
	East Point Cycle & Key 2834 Church St. 30344
ILLINOIS	LYON	
	Keen Edge Co. 8615 Ogden Ave. 60534
INDIANA	ELKHART	
	Parts & Sales Inc. 2101 Industrial Pkwy. ..46514
	CORYDON	
	Brown Equip. Dist., Inc. 110 Beech St.47112
IOWA	DUBUQUE	
	Power Lawn & Garden Equip.	..2551 J.F. Kennedy 52001
KANSAS	WICHITA	
	Hixon, Inc. 3030 Mascot 67204
LOUISIANA	NEW ORLEANS	
	Suhren Engine Co. 8330 Earhart Blvd. 70118
MARYLAND	TAKOMA PARK	
	Center Supply Co. 6867 New Hampshire Ave. 20012
MASSACHUSETTS	SPRINGFIELD	
	Morton B. Collins Co. 300 Birnie Ave. 01107
MICHIGAN	MOUNT CLEMENS	
	Power Equipment Dist. 36463 South Gratiot... 48043
	LANSING	
	Lorenz Service Co. 2500 S. Pennsylvania.. 48900
MINNESOTA	MINNETONKA	
	Hance Distributing Inc. 11212 Wayzata Blvd. ..55343
MISSISSIPPI	BILOXI	
	Biloxi Sales & Service, Inc. 506 Caillavet St. 39533
MISSOURI	KANSAS CITY	
	Automotive Equip. Service 3117 Holmes St. 64109
	ST. LOUIS	
	Henzler, Inc. 2015 Lemay Ferry Rd. 63125
NEBRASKA	OMAHA	
	R.P.W., Inc. 7402 "L" St. 68127

BRIGGS & STRATTON, TECUMSEH AND PEERLESS PARTS AND SERVICE

Briggs & Stratton, Tecumseh and Peerless parts and service should be handled by your nearest authorized engine service firm. Check the yellow pages of your telephone directory under the listing *Engines* — *Gasoline*, Briggs & Stratton or Tecumseh Lauson —

NEW YORK	CARTHAGE	
	Gamble Dist., Inc. West End Ave. 13619
	SYRACUSE	
	Kimber's, Inc. 115 N. Geddes St. 13204
	ROCHESTER	
	Henry W. O'Neil & Associates	..410 N. Goodman St. ... 14609
NORTH CAROLINA	GREENSBORO	
	Dixie Sales Company 327 Battleground Ave.. 27402
	GOLDSBORO	
	Smith Hardware Co. 515 N. George St. 27530
OHIO	WADSWORTH	
	National Central 687 Seville Rd. 44281
	CLEVELAND	
	Bleckrie, Inc. 7900 Lorain Ave. 44102
	CARROL	
	Stebe's Mid-State Mower Supply Box 366 43112
	WILLARD	
	Sunshine Wholesale Tire Outlet Route 224 44890
	MANSFIELD	
	McClure Lawn & Garden Supply	..1114 Lexington Ave. . 44903
OKLAHOMA	MUSKOGEE	
	Victory Motors, Inc. 605 S. Cherokee 74401
	ADA	
	Ada Auto Supply 301 E. 12th St. 74820
OREGON	PORTLAND	
	Kenton Supply Co. 8216 N. Denver Ave. . 97217
PENNSYLVANIA	LANCASTER	
	Raub Supply Co. James & Mulberry Sts...17604
	PITTSBURGH	
	Bluemont Co. 11125 Frankstown Rd.. 15235
TENNESSEE	KNOXVILLE	
	Master Repair Service 2423 Broadway, N.E. ...37917
	MEMPHIS	
	Memphis Cycle & Supply Co. 421 Monroe Ave. 38103
	American Sales & Service, Inc.	.. 1922 Lynnbrook 38117
TEXAS	DALLAS	
	Marr Brothers, Inc. 423 E. Jefferson 75203
	HOUSTON	
	Bullard Supply Co. 2409 Commerce St. 77003
	SAN ANTONIO	
	Catto & Putty, Inc. P.O. Box 240878206
	FORT WORTH	
	Woodson Sales Corp. 1702 N. Sylvania 76111
UTAH	SALT LAKE CITY	
	A-1 Engine & Mower Co. 437 E. 9th St.84111
VERMONT	BURLINGTON	
	Vermont Appliance Co. 44 Lakeside Ave.05401
VIRGINIA	RICHMOND	
	RBI Corp. 963 Myers St. 23260
WASHINGTON	SEATTLE	
	Bailey's Rebuild, Inc. 1325 E. Madison St. ...98102
WEST VIRGINIA	CHARLESTON	
	Young's, Inc. 233 Virginia St., E. ...25301
WISCONSIN	APPLETON	
	Automotive Supply Co. 123 S. Linwood Ave. ..54911

WARRANTY PARTS AND SERVICE POLICY

The purpose of warranty is to protect the customer from defects in workmanship and materials, defects which are NOT detected at the time of manufacture, it does not provide for the unlimited and unrestricted replacement of parts. Use and maintenance are the responsibility of the customer. The manufacturer cannot assume responsibility for conditions over which it has no control. Simply put, if it's the manufacturer's fault, it's the manufacturer's responsibility; if it's the customer's fault, it's the customer's responsibility.

CLAIMS AGAINST THE MANUFACTURER'S WARRANTY INCLUDES

1. Replacement of Missing Parts on new equipment.
2. Replacement of Defective Parts within the warranty period.
3. Repair of Defects within the warranty period.

All claims MUST be substantiated with the following information:

1. Model Number of unit involved.
2. Date unit was purchased or first put into service.
3. Date of failure.
4. Nature of failure.