

# Owner's Operating Service Instruction Manual

10¢

**Model No.  
126-350A**

- **ASSEMBLY**
- **OPERATION**
- **REPAIR PARTS**

**22" SELF-PROPELLED ROTARY MOWER**

# IMPORTANT

It is suggested that this manual be read in its entirety before attempting to assemble or operate. Keep this manual in a safe place for future reference and for ordering replacement parts.

This unit is shipped WITHOUT GASOLINE or OIL. After assembly, see operating section of this manual for proper fuel and amount.

## SAFE OPERATION PRACTICES FOR WALK-BEHIND MOWERS

### TRAINING

1. Read the Operating and Service Instruction Manual carefully. Be thoroughly familiar with the controls and the proper use of the equipment.
2. Never allow children to operate a power mower.
3. Keep the area of operation clear of all persons, particularly small children and pets.

### PREPARATION

1. Thoroughly inspect the area where the equipment is to be used and remove all stones, sticks, wire, bones and other foreign objects.
2. Do not operate equipment when barefoot or wearing open sandals. Always wear substantial footwear.
3. Check the fuel before starting the engine. Do not fill the gasoline tank indoors, when the engine is running, or while the engine is still hot. Wipe off any spilled gasoline before starting the engine.
4. Disengage the self-propelled mechanism or drive clutch on units so equipped before starting the engine.
5. Never attempt to make a wheel adjustment while the engine is running.
6. Mow only in daylight or in good artificial light.
7. Never operate the equipment in wet grass. Always be sure of your footing; keep a firm hold on the handle and walk, never run.

### OPERATION

1. Do not change the engine governor settings or overspeed the engine.
2. Do not put hands or feet near or under rotating parts. Keep clear of the discharge opening at all times.
3. Stop the blade(s) when crossing gravel drive, walks or roads.
4. After striking a foreign object, stop the engine, remove the wire from the spark plug, thoroughly inspect the mower for any damage, and repair the damage before restarting and operating the mower.

5. If the equipment should start to vibrate abnormally, stop the engine and check immediately for the cause. Vibration is generally a warning of trouble.
6. Stop the engine whenever you leave the equipment, before cleaning the mower housing, and when making any repairs or inspections.
7. When cleaning, repairing or inspecting, make certain the blade and all moving parts have stopped. Disconnect the spark plug wire, and keep the wire away from the plug to prevent accidental starting.
8. Do not run the engine indoors.
9. Shut the engine off and wait until the blade comes to a complete stop before removing the grass catcher or unclogging chute.
10. Mow across the face of slopes, never up-and-down. Exercise extreme caution when changing direction on slopes. Do not mow excessively steep slopes.
11. Always disconnect electric mowers (line operated) before cleaning, repairing or adjusting.
12. Never operate mower without proper guards, plates or other safety protective devices in place.
13. Keep washout ports and other mower-housing service openings closed when mowing.
14. **DO NOT OPERATE** this mower with the chute doors open, unless the complete grass catcher is properly mounted on the mower.

### MAINTENANCE AND STORAGE

1. Check the blade and engine mounting bolts at frequent intervals for proper tightness.
2. Keep all nuts, bolts, and screws tight to be sure the equipment is in safe working condition.
3. Never store the equipment with gasoline in the tank inside of a building where fumes may reach an open flame or spark. Allow the engine to cool before storing in any enclosure.
4. To reduce fire hazard, keep the engine free of grass, leaves, or excessive grease.
5. Check the grass catcher bag frequently for wear or deterioration. Replace with new bag for safety protection.

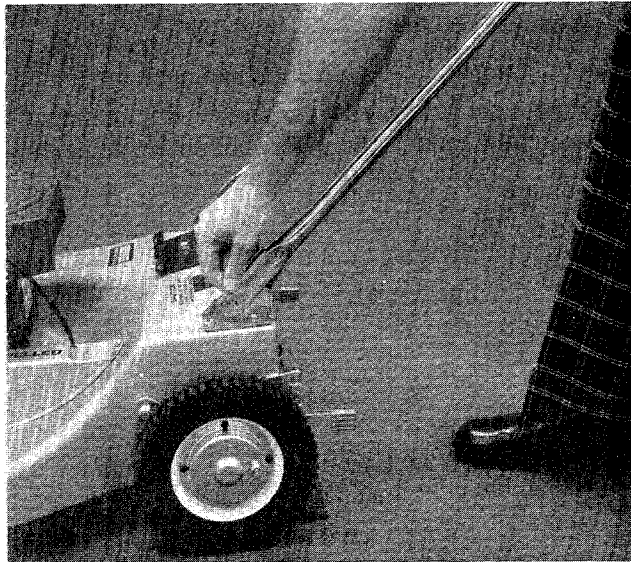
# ASSEMBLY



## NOTE

Reference to Left or Right side of machine is from operator's position at the handle facing forward.

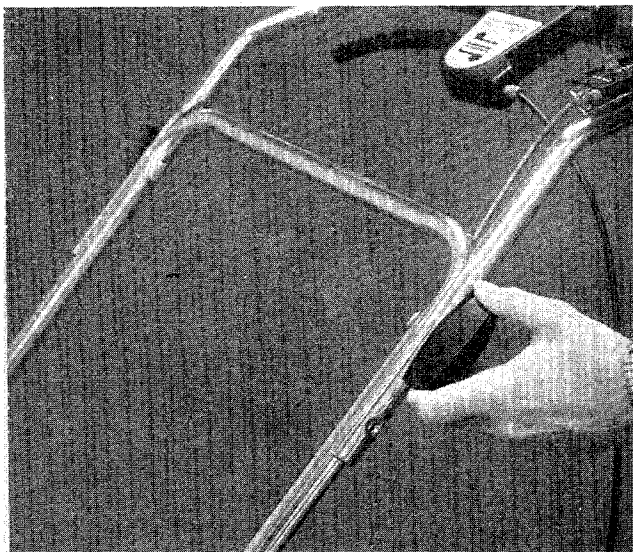
The Lawn Mower, except the handle and throttle control, is fully assembled, packed and shipped in one container.



**FIGURE 1**

## ATTACHING THE HANDLE

1. The throttle is attached to the engine. Extend the throttle control and lay it on the floor. Be careful not to bend or kink the wire.
2. Attach the lower handle over the pins on the handle brackets located on the rear of the mower. (See figure 1.)



**FIGURE 2**

3. Place the two cotter hairpins in the holes in the pins.
4. Assemble the upper handle with the engagement lever attached, to the lower handle with the two knobs. Make sure the single hole for the throttle is on the right side of the handle. The knobs can be either to the inside or the outside of the handle. (See figure 2.)



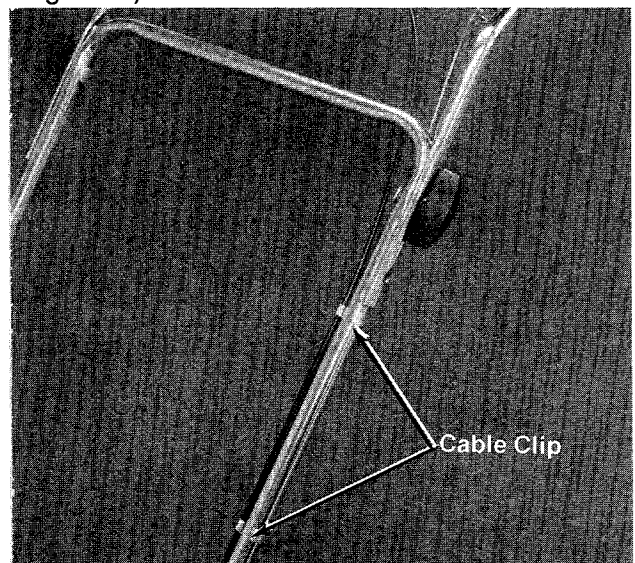
## NOTE

There are two height positions for the handle. See the Operation section of this handbook for adjustment.



**FIGURE 3**

5. Assemble the throttle control to the upper handle with the nut and bolt. (See figure 3.)
6. Secure the throttle control wire and clutch wire to the lower handle with the cable clips. (See figure 4.)



**FIGURE 4**

# ASSEMBLY—GRASS CATCHER

The grass catcher is partially assembled. The hardware needed is in the hardware pack. It consists of:

- 7 bolts 3/8" long
- 4 bolts 1" long
- 11 lockwashers
- 11 nuts
- 2 cotterpins
- 1 bolt 3/4" long
- 1 locknut 5/16" fine
- 1 lever assembly

1. Assemble the rear frame to the front frame with the four 1" bolts, lockwashers and nuts. (See figure 5.)

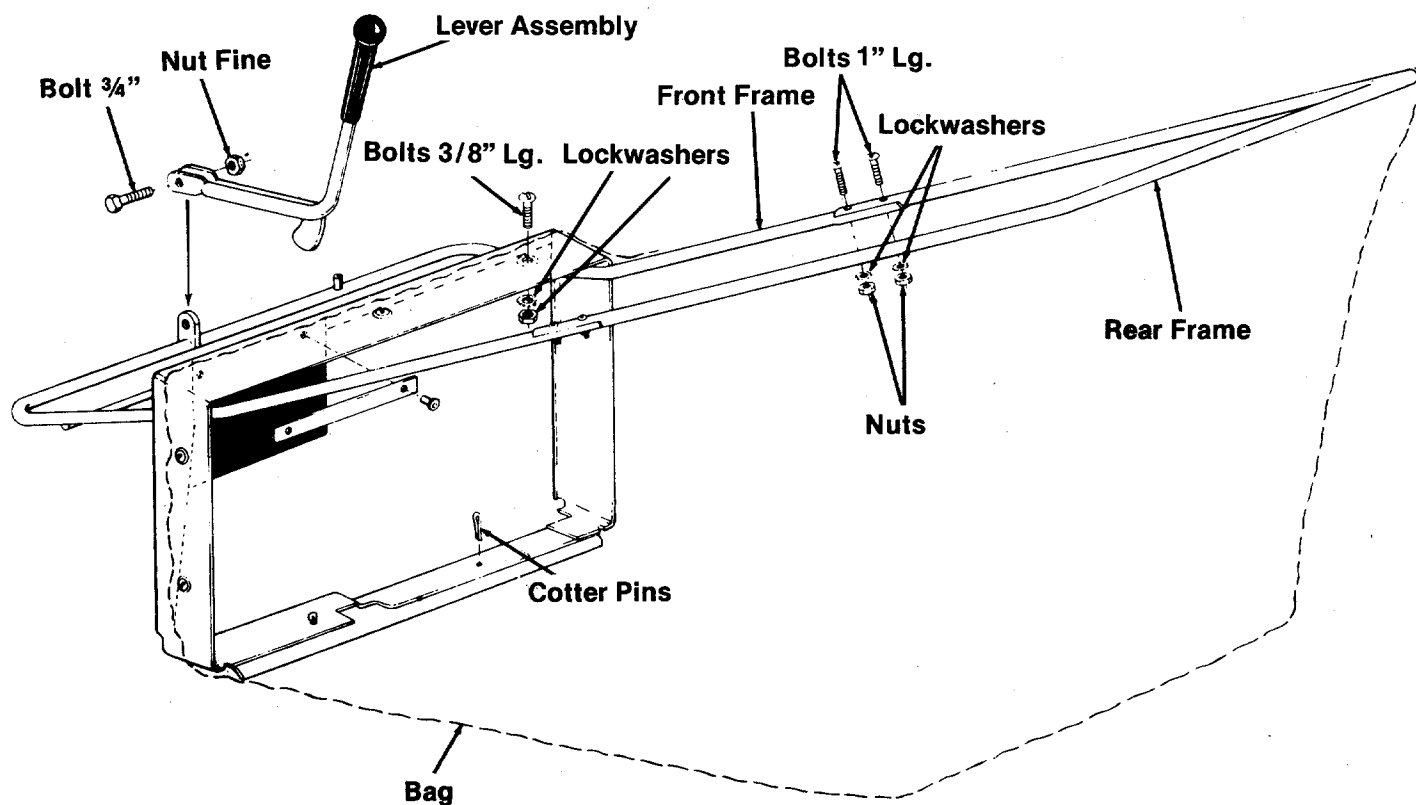
2. Slip the bag over the frame from the rear.

3. Fasten the bag to the frame with the 7 bolts 3/8" long, lockwashers and nuts. Start with the three holes on top of the bag, then do both sides.

4. Fit the lower edge of the bag into the slot in the bottom of the front frame and place the two cotter pins through the front frame and the eyelets in the bag.

5. Bend the ends of the cotter pins over.

6. Assemble the lever assembly to the front frame with a 3/4" bolt and 5/16" fine thread nut.



# OPERATION

Before starting the engine fill the crankcase with oil.



## WARNING

The mower shall not be operated without the entire grass catcher or rubber protective shield in place.



## NOTE

Under normal usage the grass catcher bag material is subject to wear and should be checked periodically.

This mower is designed to be operated at full throttle to give you the best cut and do the most effective job of bagging the cut grass.

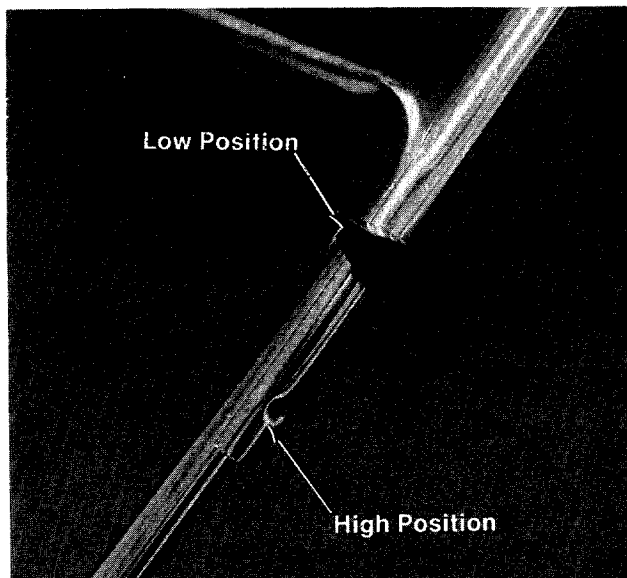


FIGURE 6

## HANDLE POSITION

The upper handle can be adjusted to a high or low position. The operator of the lawn mower can easily adjust the handle position by unscrewing the two knobs, removing the two bolts and reassembling in the other position. No tools are necessary to make this adjustment. (See figure 6.)

## ATTACHING GRASS CATCHER

The doors shown in figure 7 cannot be opened to discharge the grass unless the grass catcher is in place.



## WARNING

Under no circumstances should the doors be opened while the engine is operating.

1. Attach the grass catcher frame to the front of the adapter as shown in figure 8.
2. Push down on the back of the bag until the entire grass catcher seats into the bracket.
3. Move the locking lever towards the rear of the mower. (See figure 9.) This locks the grass catcher in place and opens the doors.
4. To remove the grass catcher, unlock the locking lever and lift off the grass catcher.

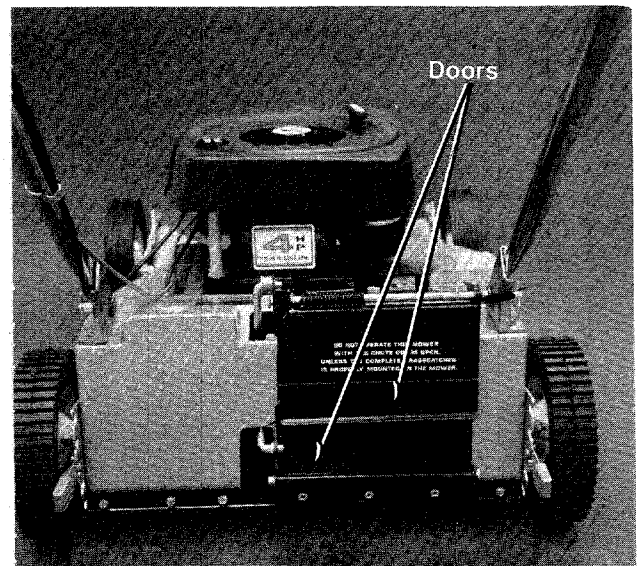


FIGURE 7

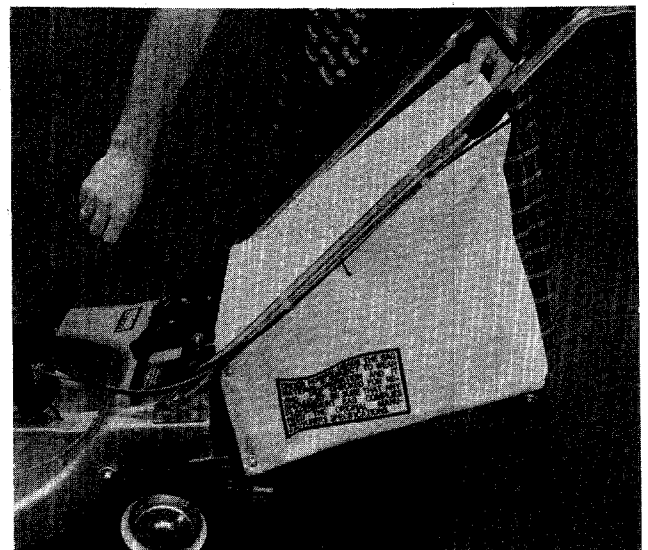
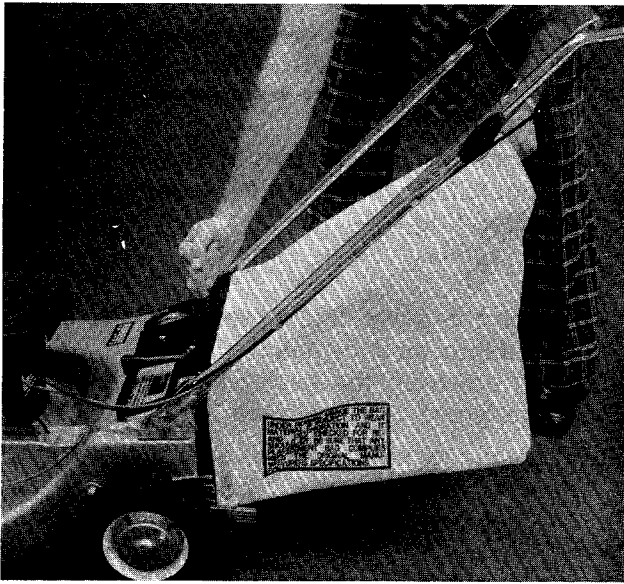


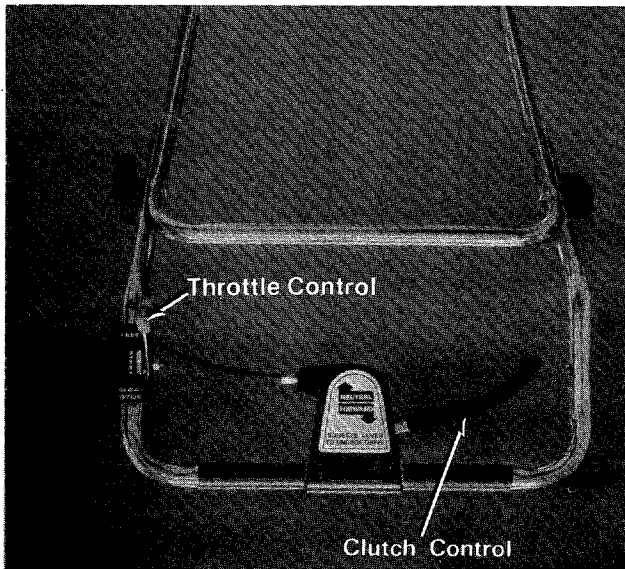
FIGURE 8



**FIGURE 9**

### THROTTLE CONTROL

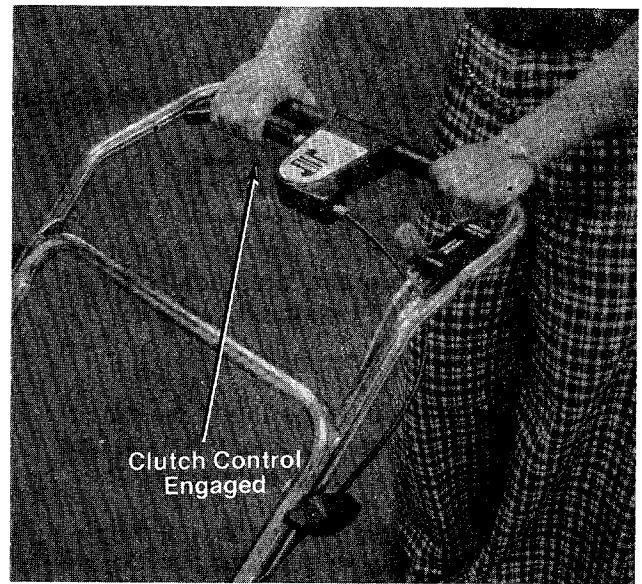
Your engine has an automatic choke. The throttle control is used to regulate the engine speed and stop the engine. The engine can be started with the throttle control lever anywhere in the START position. Move the throttle control to the STOP position to stop the engine. (See figure 10.)



**FIGURE 10**

### CLUTCH CONTROL

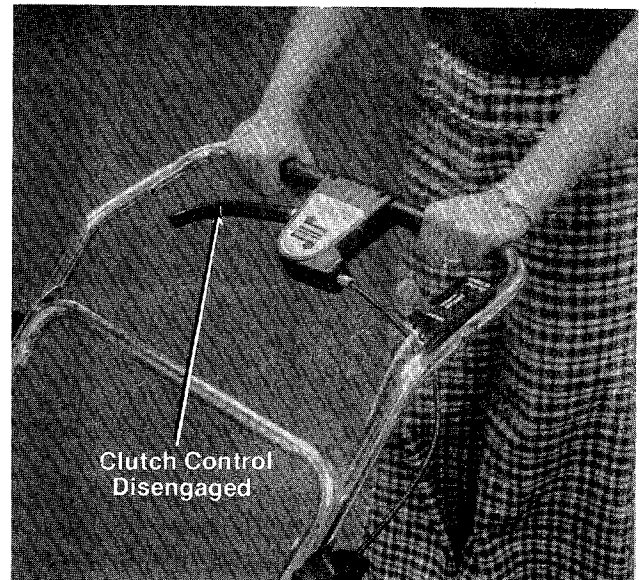
Squeezing the clutch control engages the drive mechanism to the rear wheels. Releasing the clutch control stops the rear wheels from driving. Release the clutch control to slow down when negotiating an obstacle, making a turn or stopping. (See figures 11 and 12.)



**FIGURE 11**



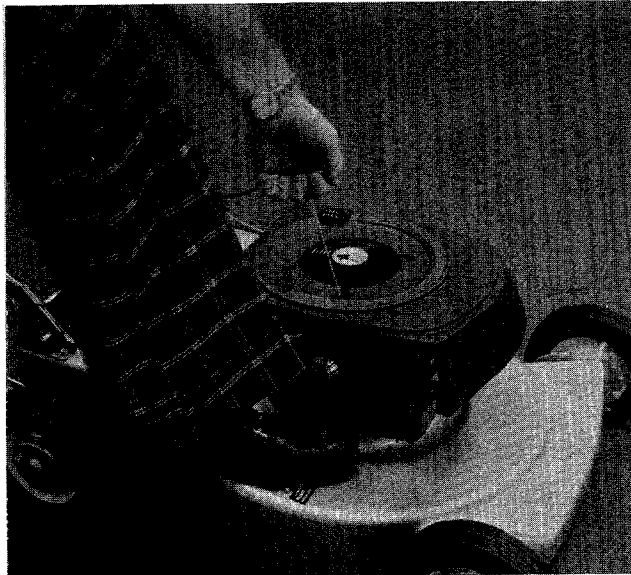
The blade continues to rotate when the clutch is released.



**FIGURE 12**

Start the engine from the left side by lifting up on the starter handle and placing your foot on the mower deck. (See figure 13.)



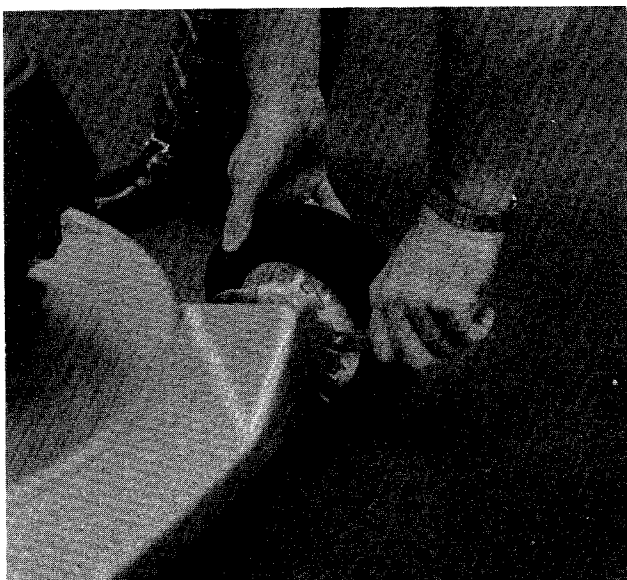


**FIGURE 13**

### HEIGHT ADJUSTMENT



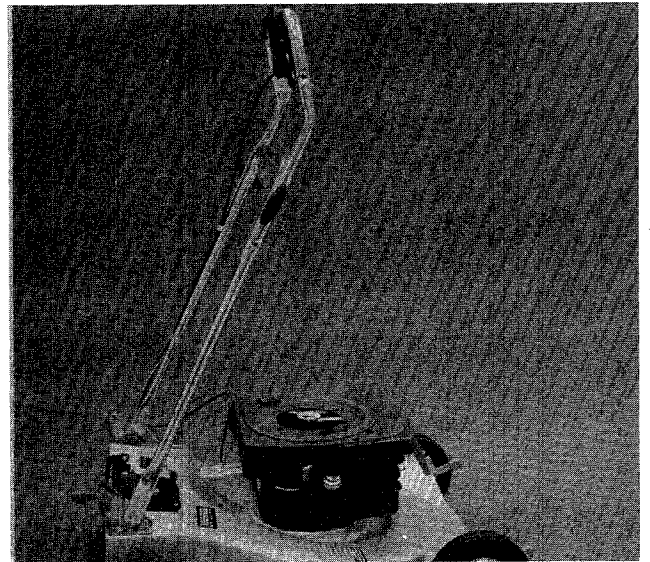
Before changing the cutting height, stop the engine and disconnect the spark plug wire. Adjustments may be made by moving the height adjustment lever on each wheel to the desired position. (See figure 14.) There are five cutting heights. All four height adjusters should be in the same relative position.



**FIGURE 14**

### HANDLE STORAGE

The handle can be stored in the upright position to take less room. Grasp the lower handle at the bottom, pull apart slightly and tip the handle forward. It will lock in this position. Reverse this procedure to place the handle in the operating position. (See figure 15.)

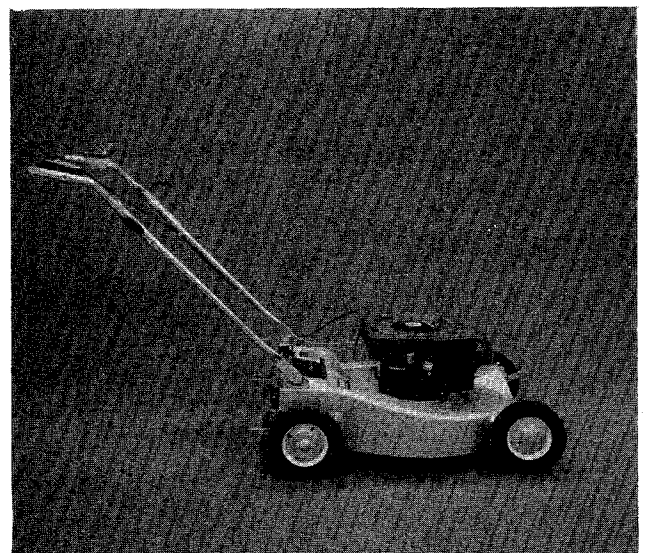


**FIGURE 15**

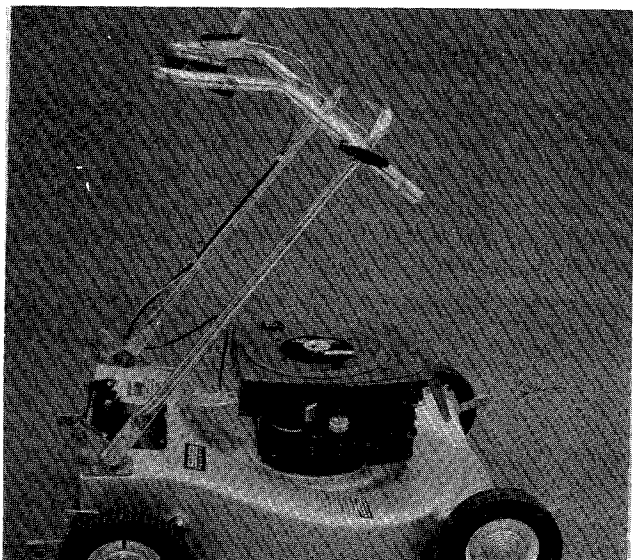
### FOLDING THE HANDLE

The handle can be folded completely for storage. To fold the handle, loosen the black plastic knobs on each side of the handle, swing the upper handle down as you pivot the lower handle forward. (See figures 16, 17 and 18.)

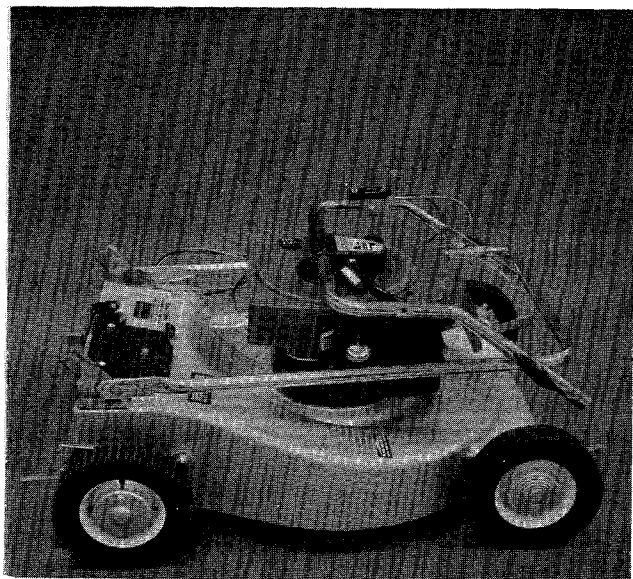
The following maintenance and adjustment instructions are primarily for the mower. For the engine refer to the Engine Operating and Maintenance manual packed with this mower.



**FIGURE 16**



**FIGURE 17**



**FIGURE 18**

### WHEEL LUBRICATION

Each front wheel has two ball bearings and each rear wheel has a sintered iron sleeve bearing that requires periodic lubrication. Place a few drops of light oil on each bearing at the start of each mowing season.

### CUTTING BLADE

The blade may be removed for sharpening or replacement as follows:

1. Remove the large bolt and lockwasher holding the blade and adapter to the engine crankshaft.
2. Remove the blade and adapter from the crankshaft.
3. Be careful not to lose the key on the crankshaft.

4. Remove the two smaller bolts, lockwashers and nuts holding the blade to the adapter. (See figure 19.)

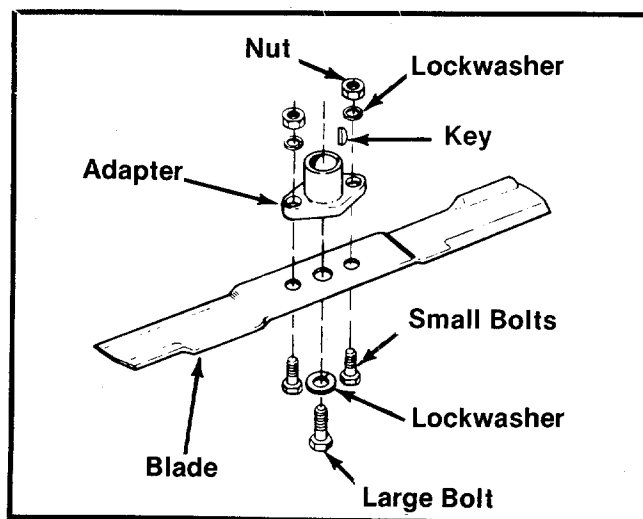
When sharpening the blade, follow the original angle of grind as a guide. It is extremely important that each cutting edge receives an equal amount of grinding to prevent an unbalanced blade. An unbalanced blade will cause excessive vibration when rotating at high speeds and may cause damage to the mower.

The blade can be tested for balance by balancing it on a screwdriver. Remove metal from the heavy side until it balances evenly. (See figure 20.)

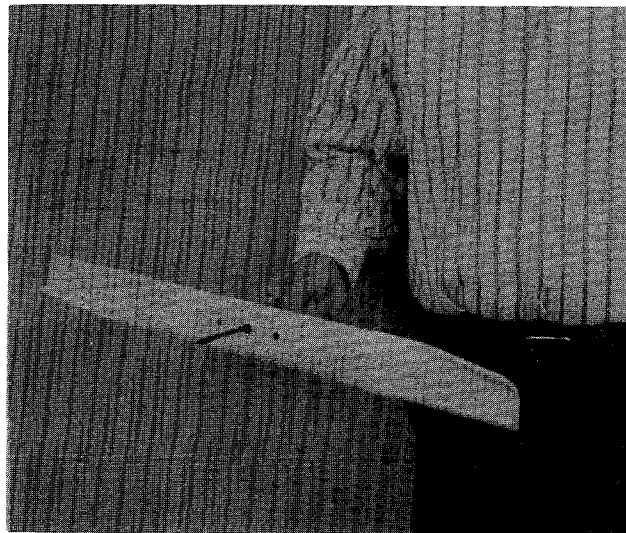


### **NOTE**

When replacing the blade, be sure the side of the blade marked "Bottom" or having the part number is facing the ground when the mower is in the operating position.



**FIGURE 19**



**FIGURE 20**



## CHAIN LUBRICATION

If the rotary mower is operated in a sandy area the chain should not be lubricated. Excessive oil on a chain will collect dirt and cause excessive wear on the chain and sprockets.

To lubricate the chain, remove the master link, soak the chain in kerosene or a solvent, let it air dry and wipe the chain with a rag saturated with SAE 30 oil. Reassemble the chain to the sprockets. Closed end of the master link clip should face in direction of chain travel.

## BELT REMOVAL

1. Remove the spark plug wire and ground it.
2. Remove the three screws holding the belt guard (and idler assembly). (See figure 21.)
3. Remove the belt from the idler as you lift off the belt guard.
4. Place the mower in an upright position. (See figure 22.)



**WARNING**

Make sure that the mower is secure and cannot tip over.

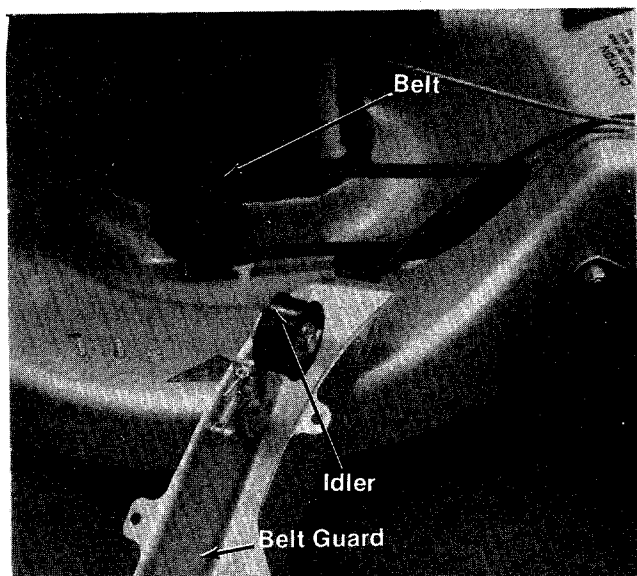


FIGURE 21

5. Take out the three screws and carriage bolt holding the shield in place. (See figure 22.)
6. Remove the nut and slide the pulley bolt out. (See figure 23.)



**NOTE**

Be sure the spacers and washers are installed in the same order when re-assembling the pulley.

7. Remove the belt. (See figure 24.)
8. Install the new belt as shown in figure 25 with the idler under the belt.
9. Assemble the belt cover, lower pan and blade to the mower.

## MAINTENANCE

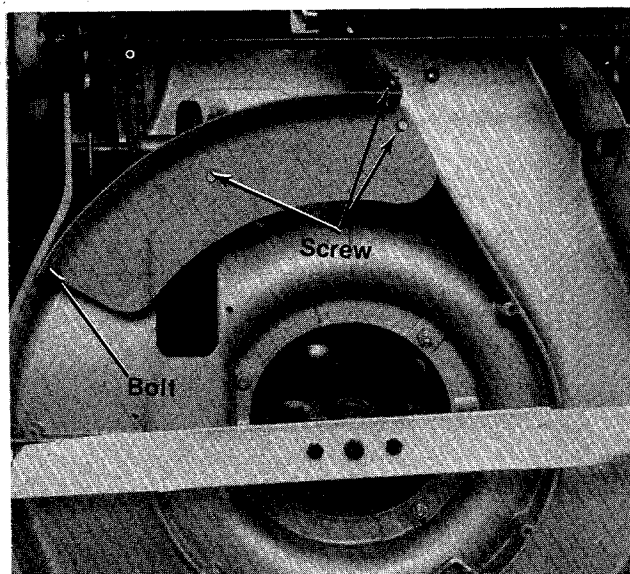


FIGURE 22

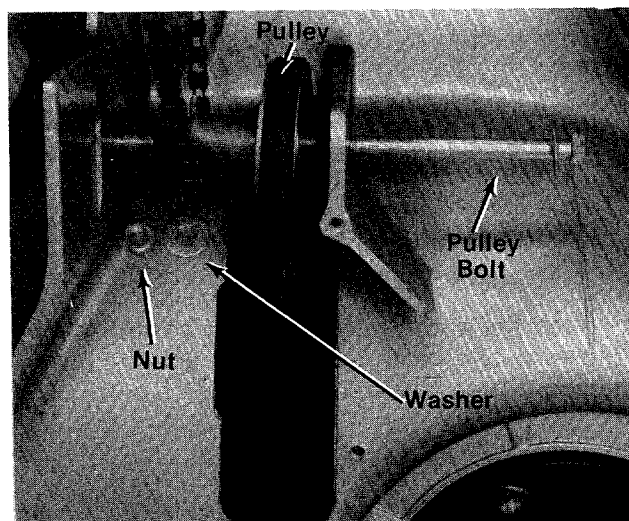


FIGURE 23

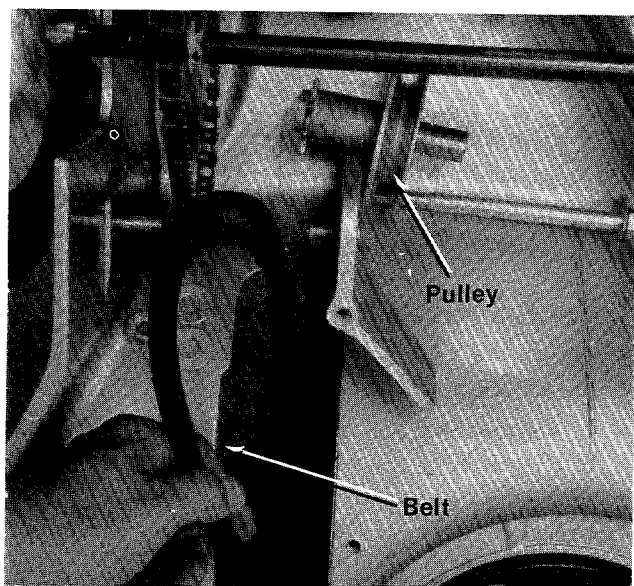


FIGURE 24

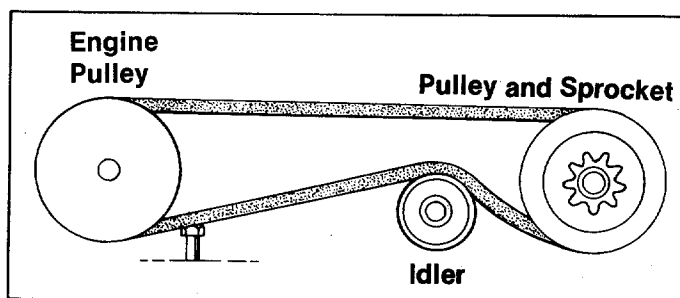


FIGURE 25

### CLUTCH CONTROL ADJUSTMENT

1. To increase belt tension, loosen jam nut and backoff two or three threads. (See figure 26.)
2. Thread the barrel nut on end of control cable inward two or three threads, and retighten jam nut. (See figure 26.)
3. To decrease belt tension, loosen jam nut and back off two or three threads. (See figure 26.)
4. Thread the barrel nut on end of control cable outward two or three threads, and retighten jam nut. (See figure 26.)

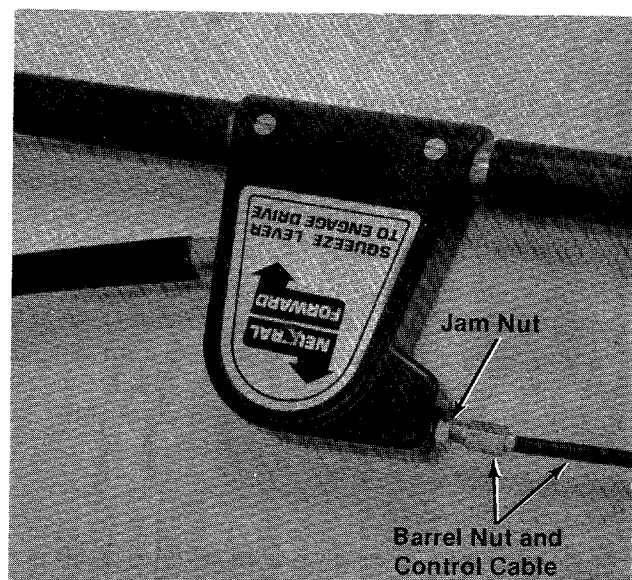


FIGURE 26

### OFF-SEASON STORAGE

If the machine is to be inoperative for a period longer than 30 days, the following procedures are recommended:

1. Working outdoors, drain all fuel from the fuel tank. Use a clean dry cloth to absorb the small amount of fuel remaining in the tank, then run the engine until all fuel in the carburetor is exhausted.



Do not drain fuel while smoking, or if near an open fire.

2. Drain all the oil from the crankcase (this should be done after the engine has been operated and is still warm) and refill the crankcase with clean new oil.
3. Disconnect the spark plug wire and remove the spark plug from the cylinder. Pour about 2 or 3 tablespoons of engine oil into the cylinder, and then turn the engine over several times to spread out the oil. Replace the spark plug, but do not connect the wire.
4. Clean the engine and the entire mower thoroughly.
5. Lubricate all lubrication points indicated in figures 10 to 13, then wipe the entire machine with an oiled rag in order to protect the surfaces.



**NOTE**

The manufacturer DOES NOT recommend the use of any accessory on this Rotary Mower other than those manufactured by MTD Products Inc.



**WARNING**

DO NOT operate the mower with the chute doors open unless the complete grass catcher is properly mounted on the mower.



**NOTE:**

Under normal usage bag material is subject to wear and should be checked periodically. Be sure any replacement bag complies with the mower manufacturer's recommendations.

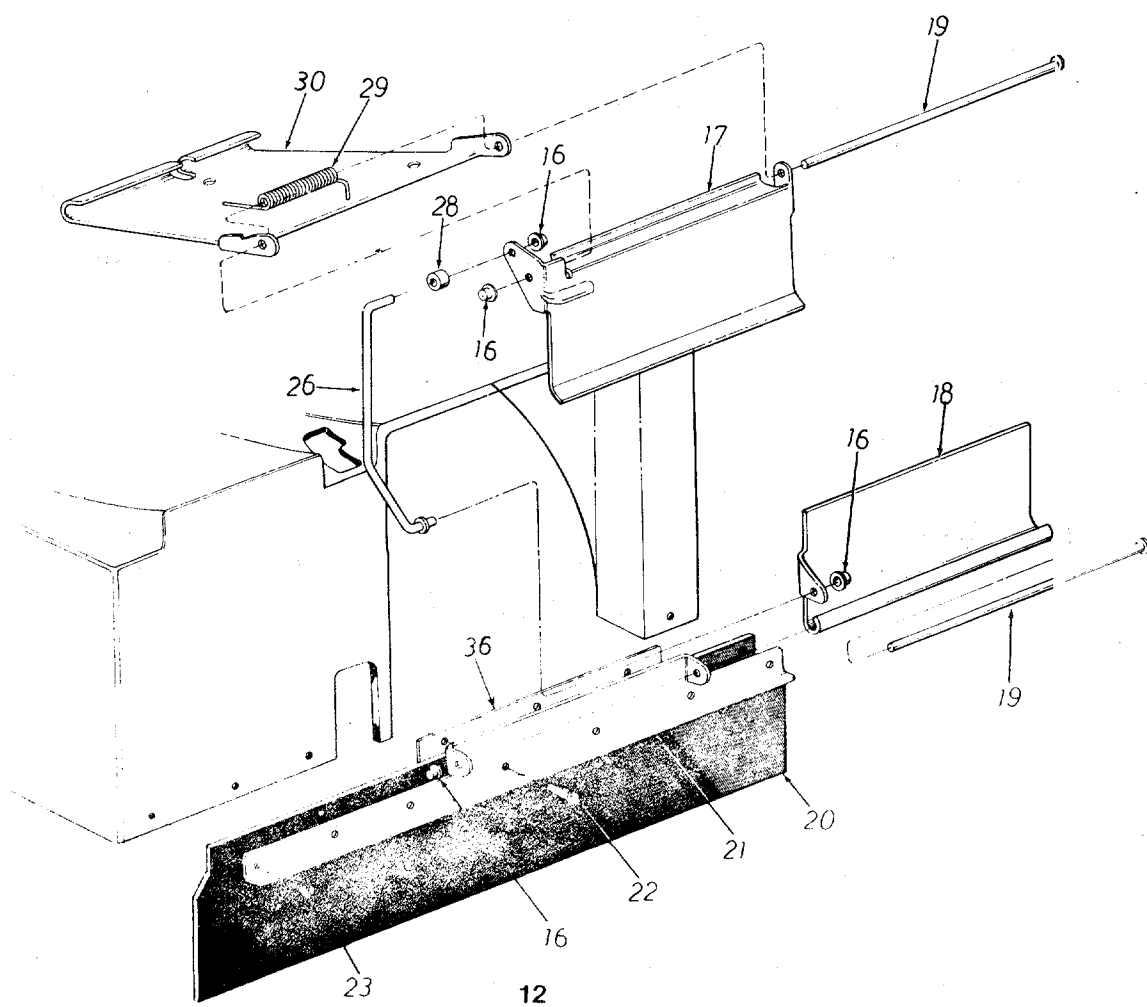
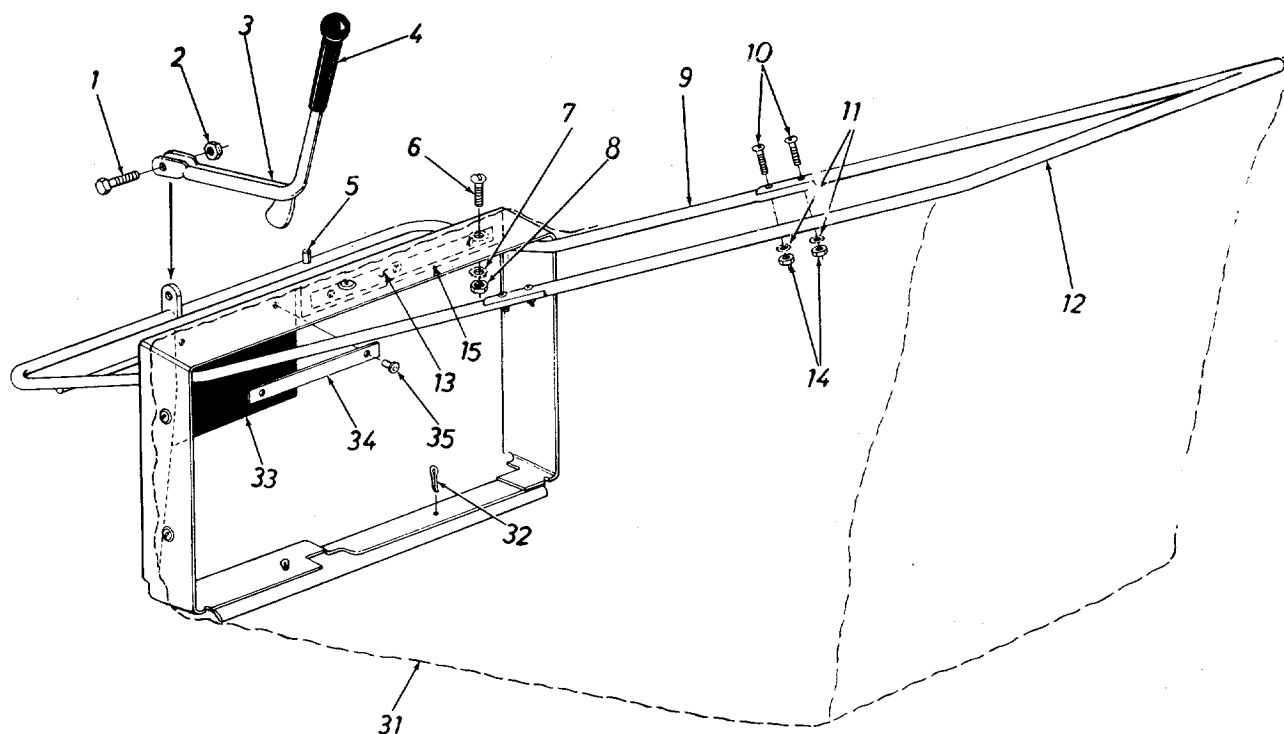
For replacement bags, use only factory authorized replacement bag No. 764-0130.



**IMPORTANT**

After striking a foreign object, stop the engine, remove wire from spark plug. Thoroughly inspect the mower for any damage, and repair the damage before restarting and operating the mower.

# 126-350A



# **PARTS LIST FOR MODEL 126-350A**

REF. NO.	PART NO.	COLOR CODE	DESCRIPTION	NEW PART	REF. NO.	PART NO.	COLOR CODE	DESCRIPTION	NEW PART
1	710-0117		Hex Scr. 5/16-24 x 1.00" Lg.*		17	12395		Chute Door—Upper Half	
2	712-0237		Hex Center L-Nut 5/16-24 Thd.		18	<del>12144</del> 12199		Chute Door—Lower Half	
3	12393		Cam Lever Ass'y.		19	738-0253		Hinge Rod	
4	720-0143		Grip		20	735-0169		Rear Protective Flap	
5	715-0247		Spring Pin Spiral		21	12305		Rear Safety Shield Plate	
6	710-0192		Truss Mach. Scr. #10-24 x .38" Lg.		22	728-0128		Rivet*	
7	736-0147		Ext. L-Wash. #10 Scr.*		23	710-0436		Hex B-Tapp Scr. #10Z x .62" Lg.*	
8	712-0121		Hex Nut #10-24 Thd.*		26	747-0141		Connecting Rod	
9	12579		Catcher Frame Ass'y. Lower Half		28	748-0246		Roller Spacer	
10	710-0467		Rd. Hd. Mach. Scr. #10-24 x 1.00" Lg.*		29	732-0295		Torsion Spring	
11	736-0147		Ext. L-Wash. #10 Scr.*		30	12192		Grass Catcher Adapter	
12	749-0178		Frame—Rear Half		31	764-0130		Bag	
13	12316		Reinforcement Bar		32	714-0115		Cotter Pin 1/8" Dia. x 1.00" Lg.*	
14	712-0121		Hex Nut #10-24 Thd.*		33	735-0184		Grass Catcher Flap	
15	735-0183		Grass Catcher Flap		34	12185		Reinforcement Bar	
16	726-0135		Push Nut 5/16" Rod		35	728-0128		Rivet	
					36	12316		Reinforcement Bar	

N

\*For faster service obtain standard nuts and bolts locally. If these items cannot be obtained locally, order by part number and size as shown on the parts list.

(462—Red Flake) When ordering parts, if color or finish is important, use the appropriate color code shown at left. (e.g. Red Flake Finish—12609 (462) )

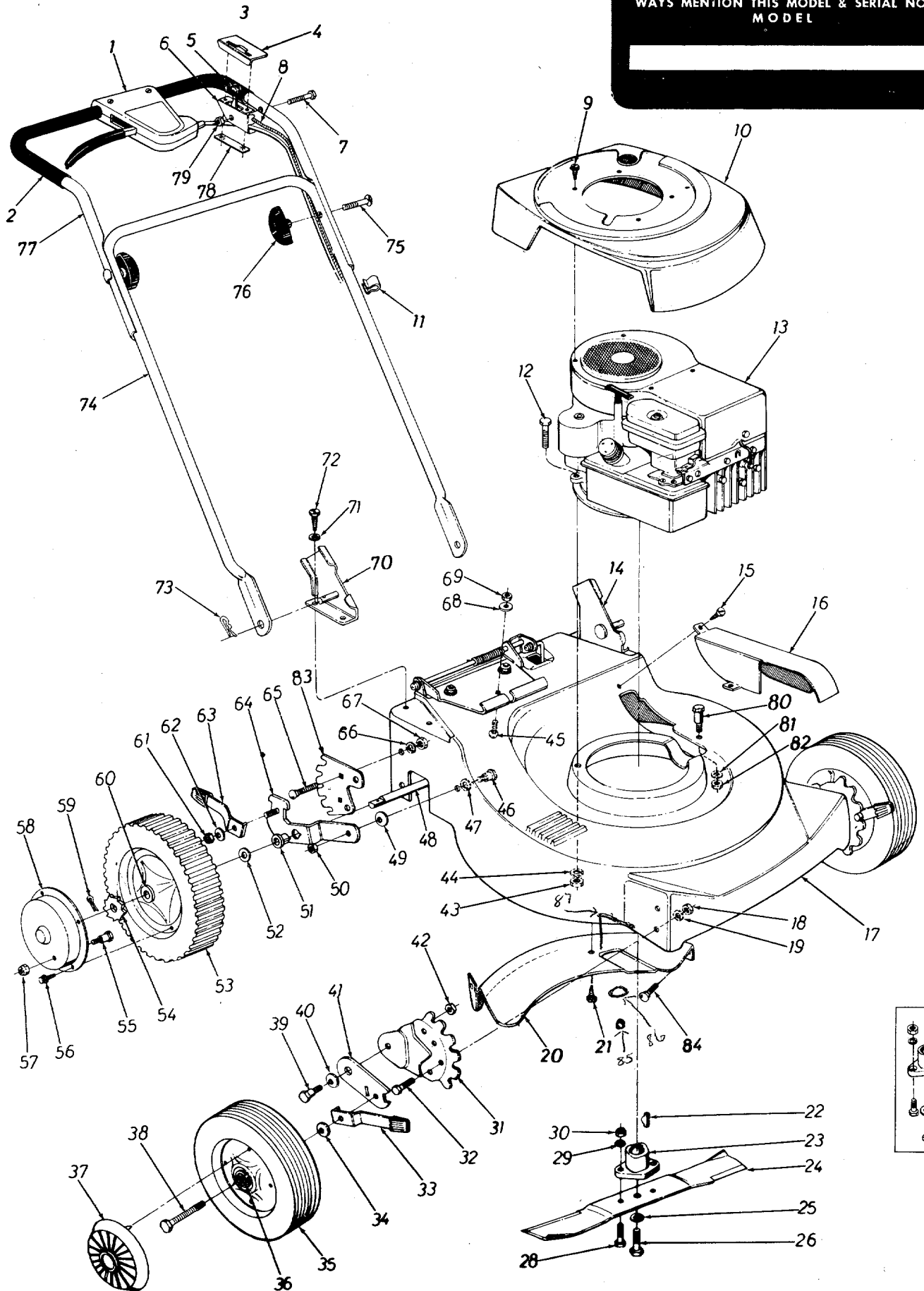
The engine is not under warranty by the mower manufacturer. If repairs or service is needed on the engine, please contact your nearest authorized engine service outlet. Check the "Yellow Pages" of your telephone book under "Engines — Gasoline."





# 126-350A

IF YOU WRITE TO US ABOUT THIS ARTICLE  
OR IF YOU ORDER REPLACEMENT PARTS AL-  
WAYS MENTION THIS MODEL & SERIAL NO  
MODEL



# PARTS LIST FOR MODEL 126-350A

REF. NO.	PART NO.	COLOR CODE	DESCRIPTION	NEW PART	REF. NO.	PART NO.	COLOR CODE	DESCRIPTION	NEW PART
1	12608		Clutch Control Ass'y. Comp.		42	712-0375		Hex Cent. L-Nut 3/8-16 Thd.	
2	718-0143		Grip		43	712-0267		Hex Nut 5/16-18 Thd.*	
3	746-0256		Throttle Control Ass'y. Comp.		44	736-0119		L-Wash. 5/16" Scr.*	
4	731-0344		Plastic Label	N	45	710-0134		Car. Bolt 1/4-20 x .62" Lg.	
5	731-0189		Control Knob		46	738-0143		Shld. Scr. .498 Dia. x .340	
6	746-0179		Throttle Control Ass'y.		47	736-0232		Wave Wash. .530 I.D. x .78 O.D.	
7	710-0606		Hex Scr. 1/4-20 x 1.50" Lg.*		48	12313		Rear Shaft Ass'y.	
8	746-0255		Conduit and Wire		49	736-0219		Belleville Wash. .400 I.D. x 1.13 O.D.	
9	710-0227		Slot Hex Hd. Self Extr. Scr. #8- x .138" Lg.*		50	712-0181		Hex Top L-Nut 3/8-16 Thd.	
10	731-0303		Engine Shroud		51	748-0142		Flange Bearing	
11	726-0145		Cable Clip Twin Type		52	736-0192		Fl.-Wash. .531 I.D. x .93 O.D.	
12	710-0442		Hex Scr. 5/16-18 x 1.50" Lg.*		53	734-0538		Wheel Ass'y. Comp.—Rear	
13	—		Engine		54	748-0187		Ratchet	
14	12575		Handle Mount Brkt. Ass'y. —L.H.		55	738-0137		Shld. Scr. .342 Dia. x .268	
15	710-0599		Hex Wash. S-Tapp Scr. 1/4-20 x .50" Lg.		56	710-0407		Slot Hex Hd. Self Extr. Scr. #8-32 x .50" Lg.	
16	12308 —462		Belt Cover Ass'y.		57	712-0219		Elastic Stop Nut 1/4-20 Thd.	
17	12609 —462		22" Deck Ass'y.		58	10647 —462		Hub Cap—Rear	
18	712-0798		Hex Nut 3/8-16 Thd.*		59	714-0115		Cotter Pin 1/8" Dia. x 1.00" Lg.*	
19	736-0169		L-Wash. 3/8" Scr.*		60	748-0125		Sleeve Bearing .503 I.D.	
20	12607		Cover Plate		61	712-0798		Hex Nut 3/8-16 Thd.*	
21	710-0618		Fl.-Hd. Phil. Scr. 1/4-20 x .62" Lg.		62	736-0105		Belleville Wash. .400 I.D. x .88 O.D.	
22	714-0365		#6 Hi-Pro-Key 5/32 x 5/8" Dia.		63	10530		Spring Lever Ass'y. with Knob	
23	10769		Blade Adapter Kit		64	10639		Pivot Brkt. Ass'y.—R.H.	
24	742-0125		22" Blade			10638		Pivot Brkt. Ass'y.—L.H.	
25	736-0217		L-Wash. 3/8" Scr. Heavy Duty		65	710-0260		Car. Bolt 5/16-18 x .62" Lg.	
26	710-0459		Hex Scr. 3/8-24 x 1.50" Lg. H.T.		66	736-0119		L-Wash. 5/16" Scr.*	
27	10769		Blade Adapter Kit		67	712-0267		Hex Nut 5/16-18 Thd.	
28	710-0117		Hex Scr. 5/16-24 x 1.00" Lg. H.T.		68	736-0329		L-Wash. 1/4" Screw*	
29	736-0119		L-Wash. 5/16" Scr.*		69	712-0287		Hex Cent. 1/4-20 Thd.*	
30	712-0123		Hex Nut 5/16-24 Thd.*		70	12576		Handle Mount Brkt. Ass'y.—R.H.	
31	12321		Ht. Adj. Ass'y. Comp.—L.H.		71	736-0329		L-Wash. 1/4" Scr.*	
	12322		Ht. Adj. Ass'y. Comp.—R.H.		72	710-0252		Hex Scr. 1/4-20 x .75" Lg.*	
	12323		Index Plate		73	714-0104		Intern. Cotter Pin 5/16" Dia.	
32	710-0216		Hex Scr. 3/8-16 x .75" Lg.*		74	749-0179		Lower Handle	
33	10530		Spring Lever Ass'y. with Knob		75	710-0405		Curved Car. Bolt 5/16-18 x 1.75" Lg.	
34	736-0105		Belleville Wash. .400 I.D. x .88 O.D.		76	09966		Hand Knob	
35	734-0643		Front Wheel Ass'y. Comp.		77	749-0181		Upper Handle	
36	741-0178		Ball Bearing (2 req'd.)		78	726-0134		Speed Nut—Twin Type	
37	731-0124		Hub Cap		79	712-0107		Hex Cent. L-Nut 1/4-20 Thd.	
38	710-0427		Hex Scr. 3/8-16 x 2.00" Lg.*		80	738-0138		Shoulder Scr. .437 Dia. x .470	
39	738-0269		Shoulder Scr.		81	736-0119		L-Wash. 5/16-18" Scr.*	
40	736-0255		Belleville Wash. .500 I.D. x 1.14 O.D.		82	712-0267		Hex Nut 5/16-18 Thd.*	
					83	10643		Index Plate	
41	10619		Pivot Bar		84	710-0258		Hex Scr. 1/4-20 x .62" Lg.*	

\*For faster service, obtain standard nuts, bolts and washers locally. If these items cannot be obtained locally, order by part number and size as shown on the parts list.

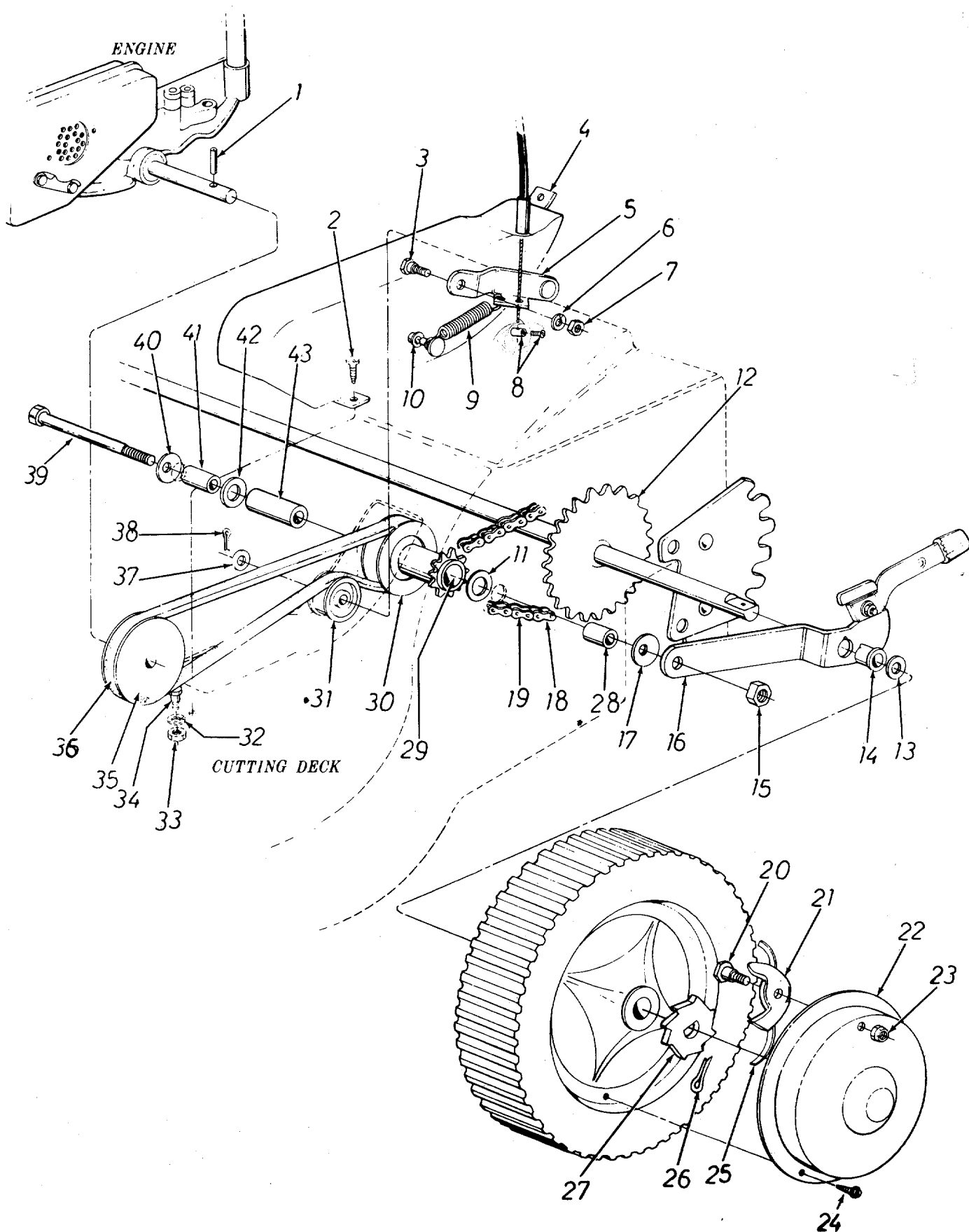
85 712-0107 Hex nut  
86 736-0329 L-wash  
87 711-0629 Finger

(462—Red Flake) When ordering parts if color or finish is important, use the appropriate color code shown at left. (e.g. Red Flake Finish—12428 (462) )

The engine is not under warranty by the mower manufacturer. If repairs or service is needed on the engine, please contact your nearest authorized engine service outlet. Check the "Yellow Pages" of your telephone book under "Engines — Gasoline."



# 126-350A



# PARTS LIST FOR MODEL 126-350A

REF. NO.	PART NO.	COLOR CODE	DESCRIPTION	NEW PART	REF. NO.	PART NO.	COLOR CODE	DESCRIPTION	NEW PART
1	715-0105		Spring Pin Roll 3/16" Dia. x 1.50" Lg.		25	10622		Nylon Spring	
2	710-0599		Hex Wash. S-Tapp Scr. 1/4-20 x .50" Lg.		26	714-0115		Cotter Pin 1/8" Dia. x 1.00" Lg.*	
3	738-0255		Shoulder Scr. .375 Dia. x .172		27	748-0187		Ratchet	
4	12308 —462		Belt Cover Ass'y.		28	750-0262		Spacer .50 O.D. x .38 I.D. x 1.42" Lg.	
5	12605		Engagement Brkt. Ass'y.		29	741-0181		Sleeve Bearing .62 I.D. x .75 O.D. x .94 Lg.	
6	736-0329		L-Wash. 1/4" Scr.*		30	756-0191		Pulley with 9 Tooth Sprocket Ass'y.	
7	712-0287		Hex Nut 1/4-20 Thd.*		31	756-0192		Plastic Flat Idler	
8	746-0247		Cable Stop		32	736-0119		L-Wash. 5/16" Scr.*	
9	732-0250		Extension Spring		33	712-0267		Hex Nut 5/16-18 Thd.*	
10	726-0111		Push Cap .188"		34	738-0138		Shld. Scr. .437 Dia. x .470	
11	736-0300		Fl.-Wash. .385 I.D. x .87 O.D.		35	756-0115		Engine Pulley	
12	12313		Rear Shaft Ass'y.		36	754-0935		V-Belt 1/2 x 31" Lg.	
13	736-0192		Fl.-Wash. .531 I.D. x .93 O.D.		37	736-0160		Fl.-Wash. .531 I.D. x .930 O.D.	
14	748-0142		Flange Bearing		38	714-0115		Cotter Pin 1/8" Dia. x 1.00" Lg.*	
15	712-0181		Hex Top L-Nut 3/8-16 Thd.		39	710-0615		Hex Scr. 3/8-16 x 5.00" Lg.*	
16	10638		Pivot Brkt. Ass'y.—L.H.		40	736-0219		Belleville Wash. .400 I.D. x 1.13 O.D.	
	10639		Pivot Brkt. Ass'y.—R.H.		41	750-0263		Spacer .50 O.D. x .38 I.D. x .90" Lg.	
17	736-0219		Belleville Wash. .400 I.D. x 1.13 O.D.		42	736-0300		Fl.-Wash. .385 I.D. x .87 O.D.	
18	713-0144		Roller Chain #48 x 31 Links		43	750-0261		Spacer .62 O.D. x .38 I.D. x 2.00" Lg.	
19	713-0122		Master Link #48						
20	738-0137		Shld. Scr. .342 Dia. x .268						
21	748-0188		Pawl						
22	10647 —462		Hub Cap—Rear						
23	712-0219		Elastic Stop Nut 1/4-20 Thd.						
24	710-0407		Slot Hex Hd. Self Extr. Scr. #8-32 x .50" Lg.						

711-0629 FINGER

712-0107 HEX C-LOCK NUT 1/4-20

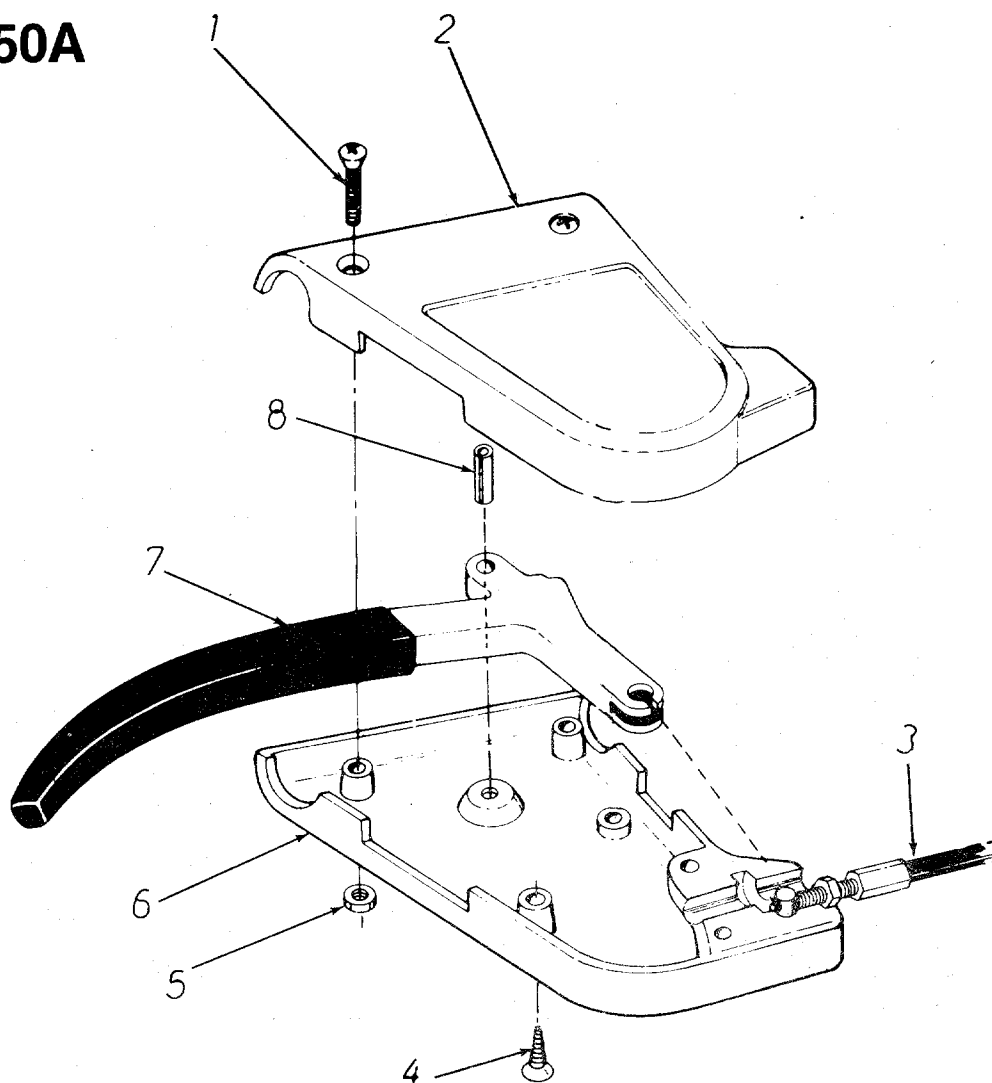
\*For faster service, obtain standard nuts, bolts and washers locally. If these items cannot be obtained locally, order by part number and size as shown on the parts list.

(462—Red Flake) When ordering parts if color or finish is important, use the appropriate color code shown at left (e.g. Red Flake Finish—12429 (462) )

The engine is not under warranty by the mower manufacturer. If repairs or service is needed on the engine, please contact your nearest authorized engine service outlet. Check the "Yellow Pages" of your telephone book under "Engines—Gasoline."



# 126-350A



## PARTS LIST FOR CONTROL LEVER ASSEMBLY BREAKDOWN 126-350A

REF. NO.	PART NO.	COLOR CODE	DESCRIPTION	NEW PART
1	710-0534		Phillips Drive Oval Hd. Scr. #8-32 x 1.25" Lg.	
2	731-0331		Front Control Cover	
3	746-0254		Control Cable 58" Lg. w/6" Ext.	
4	710-0535		Slotted Oval Self Tap Scr. #10 x .87" Lg.	
5	712-0223		Hex Nut 8-32 Thd.*	
6	731-0332		Rear Control Cover	
7	719-0193		Lever Clutch Control	
8	715-0248		Spring Pin Roll 3/16" Dia. x .75" Lg.*	

\*For faster service obtain standard nuts and bolts locally. If these items cannot be obtained locally, order by part number and size as shown on the parts list.

(462—Red Flake)

When ordering parts, if color or finish is important use the appropriate color code shown above. (e.g. Red Flake Finish—12609 (462) )

NOTE: The engine is not under warranty by the mower manufacturer . . . If repairs or service is needed on the engine, please contact your nearest authorized engine service outlet. Check the "Yellow Pages" of your telephone book under "Engines—Gasoline."

**Find It Fast  
In The  
Yellow Pages**



# PARTS INFORMATION

## POWER EQUIPMENT PARTS AND SERVICE

Parts and service for all MTD manufactured power equipment are available through the authorized service firms listed below. All orders should specify the model number of your unit, parts numbers, description of parts and the quantity of each part required.

<b>ALABAMA</b>	<b>BIRMINGHAM</b>	
Auto Electric & Carburetor Co.	2625 4th Ave. S.	35233
<b>ARKANSAS</b>	<b>NORTH LITTLE ROCK</b>	
Sutton's Lawn Mower Shop	Rt. 4, Box 368	72117
	<b>FORT SMITH</b>	
Mity Mite Motors, Inc.	2515 Towson Ave.	72901
<b>CALIFORNIA</b>	<b>SAN BERNARDINO</b>	
Lawn Mower Supply Co.	25608 E. Baseline	92410
	<b>SAN FRANCISCO</b>	
J.W. Jewett Co.	981 Folsom St.	94107
	<b>SACRAMENTO</b>	
Luttig & Severson	2030 28th St.	95818
<b>COLORADO</b>	<b>DENVER</b>	
South Denver Lawn Equip.	527 West Evans	80223
<b>CONNECTICUT</b>	<b>SUFFIELD</b>	
The Jones & Ramsey Co.	850 Thompsonville Rd.	06078
<b>FLORIDA</b>	<b>JACKSONVILLE</b>	
Radco Distributors	2403 Market St.	32206
	<b>CORAL GABLES</b>	
Maz-All of Florida, Inc.	365 Greco Ave.	33146
<b>GEORGIA</b>	<b>EAST POINT</b>	
East Point Cycle & Key	2834 Church St.	30344
<b>ILLINOIS</b>	<b>LYONS</b>	
Keen Edge Co.	8615 Ogden Ave.	60534
<b>INDIANA</b>	<b>ELKHART</b>	
Parts & Sales Inc.	2101 Industrial Pkwy.	46514
	<b>CORYDON</b>	
Brown Equip. Dist., Inc.	110 Beech St.	47112
<b>IOWA</b>	<b>DUBUQUE</b>	
Power Lawn & Garden Equip.	2551 J.F. Kennedy	52001
<b>KANSAS</b>	<b>WICHITA</b>	
Hixon, Inc.	3030 Mascot	67204
<b>LOUISIANA</b>	<b>NEW ORLEANS</b>	
Suhren Engine Co.	8330 Earhart Blvd.	70118
<b>MARYLAND</b>	<b>TAKOMA PARK</b>	
Center Supply Co.	6867 New Hampshire Ave.	20012
<b>MASSACHUSETTS</b>	<b>SPRINGFIELD</b>	
Morton B. Collins Co.	300 Birnie Ave.	01107
<b>MICHIGAN</b>	<b>MOUNT CLEMENS</b>	
Power Equipment Dist.	36463 South Gratiot	48043
	<b>LANSING</b>	
Lorenz Service Co.	2500 S. Pennsylvania	48900
<b>MINNESOTA</b>	<b>MINNETONKA</b>	
Hance Distributing Inc.	11212 Wayzata Blvd.	55343
<b>MISSISSIPPI</b>	<b>BILOXI</b>	
Biloxi Sales & Service, Inc.	506 Caillavet St.	39533
<b>MISSOURI</b>	<b>KANSAS CITY</b>	
Automotive Equip. Service	3117 Holmes St.	64109
	<b>ST. LOUIS</b>	
Henzler, Inc.	2015 Lemay Ferry Rd.	63125
<b>NEBRASKA</b>	<b>OMAHA</b>	
R.P.W., Inc.	7402 "L" St.	68127

## BRIGGS & STRATTON, TECUMSEH AND PEERLESS PARTS AND SERVICE

Briggs & Stratton, Tecumseh and Peerless parts and service should be handled by your nearest authorized engine service firm. Check the yellow pages of your telephone directory under the listing *Engines Gasoline*, Briggs & Stratton or Tecumseh Lauson

<b>NEW YORK</b>	<b>CARTHAGE</b>	
Gamble Dist., Inc.	West End Ave.	13619
	<b>SYRACUSE</b>	
Kimber's, Inc.	115 N. Geddes St.	13204
	<b>ROCHESTER</b>	
Henry W. O'Neil & Associates	410 N. Goodman St.	14609
<b>NORTH CAROLINA</b>	<b>GREENSBORO</b>	
Dixie Sales Company	327 Battleground Ave.	27402
	<b>GOLDSBORO</b>	
Smith Hardware Co.	515 N. George St.	27530
<b>OHIO</b>	<b>WADSWORTH</b>	
National Central	687 Seville Rd.	44281
	<b>CLEVELAND</b>	
Bleckrie, Inc.	7900 Lorain Ave.	44102
	<b>CARROL</b>	
Stebe's Mid-State Mower Supply	Box 366	43112
	<b>WILLARD</b>	
Sunshine Wholesale Tire Outlet	Route 224	44890
	<b>MANSFIELD</b>	
McClure Lawn & Garden Supply	1114 Lexington Ave.	44903
<b>OKLAHOMA</b>	<b>MUSKOGEE</b>	
Victory Motors, Inc.	605 S. Cherokee	74401
	<b>ADA</b>	
Ada Auto Supply	301 E. 12th St.	74820
<b>OREGON</b>	<b>PORTLAND</b>	
Kenton Supply Co.	8216 N. Denver Ave.	97217
<b>PENNSYLVANIA</b>	<b>LANCASTER</b>	
Raub Supply Co.	James & Mulberry Sts.	17604
	<b>PITTSBURGH</b>	
Bluemont Co.	11125 Frankstown Rd.	152
<b>TENNESSEE</b>	<b>KNOXVILLE</b>	
Master Repair Service	2423 Broadway, N.E.	37917
	<b>MEMPHIS</b>	
Memphis Cycle & Supply Co.	421 Monroe Ave.	38103
American Sales & Service, Inc.	1922 Lynnbrook	38117
<b>TEXAS</b>	<b>DALLAS</b>	
Marr Brothers, Inc.	423 E. Jefferson	75203
	<b>HOUSTON</b>	
Bullard Supply Co.	2409 Commerce St.	77003
	<b>SAN ANTONIO</b>	
Catto & Putty, Inc.	P.O. Box 2408	78206
	<b>FORT WORTH</b>	
Woodson Sales Corp.	1702 N. Sylvania	76111
<b>UTAH</b>	<b>SALT LAKE CITY</b>	
A-1 Engine & Mower Co.	437 E. 9th St.	84111
<b>VERMONT</b>	<b>BURLINGTON</b>	
Vermont Appliance Co.	44 Lakeside Ave.	05401
<b>VIRGINIA</b>	<b>RICHMOND</b>	
RBI Corp.	963 Myers St.	23260
<b>WASHINGTON</b>	<b>SEATTLE</b>	
Bailey's Rebuild, Inc.	1325 E. Madison St.	98102
<b>WEST VIRGINIA</b>	<b>CHARLESTON</b>	
Young's, Inc.	233 Virginia St., E.	25301
<b>WISCONSIN</b>	<b>APPLETON</b>	
Automotive Supply Co.	123 S. Linwood Ave.	54911

## WARRANTY PARTS AND SERVICE POLICY

The purpose of warranty is to protect the customer from defects in workmanship and materials, defects which are NOT detected at the time of manufacture. It does not provide for the unlimited and unrestricted replacement of parts. Use and maintenance are the responsibility of the customer. The manufacturer cannot assume responsibility for conditions over which it has no control. Simply put, if it's the manufacturer's fault, it's the manufacturer's responsibility; if it's the customer's fault, it's the customer's responsibility.

### CLAIMS AGAINST THE MANUFACTURER'S WARRANTY INCLUDES

1. Replacement of Missing Parts on new equipment.
2. Replacement of Defective Parts within the warranty period.
3. Repair of Defects within the warranty period.

All claims MUST be substantiated with the following information:

1. Model Number of unit involved.
2. Date unit was purchased or first put into service.
3. Date of failure.
4. Nature of failure.