

Owner's Operating Service Instruction Manual

10¢

**Model No.
125-550A**

- **ASSEMBLY**
- **OPERATION**
- **REPAIR PARTS**

22" HI WHEEL SELF-PROPELLED ROTARY MOWER

WARRANTY

For one year from date of purchase, MTD Products Inc will replace for the original purchaser, free of charge, F.O.B. factory or authorized service firm, any part or parts found to be defective in material or workmanship. All transportation charges on parts submitted for replacement under this warranty must be paid by the purchaser. This warranty does not include replacement of parts which become inoperative through misuse, excessive use, accident, neglect, improper maintenance or alterations by unauthorized persons. This warranty does not include the engine, motor, battery, battery charger or any component parts thereof. For service on these units, refer to the applicable manufacturer's warranty.

The above warranty will apply only to the original owner and will be effective only if the warranty card has been properly processed. It will not apply where the unit has been used commercially.

Warranty service is available through your local authorized service dealer or distributor. **UNDER NO CIRCUMSTANCES WILL THE RETURN OF A COMPLETE UNIT BE ACCEPTED BY THE FACTORY UNLESS PRIOR WRITTEN PERMISSION HAS BEEN EXTENDED.**

I M P O R T A N T

SAFE OPERATION PRACTICES FOR WALK-BEHIND MOWERS

TRAINING

1. Read the Operating and Service Instruction Manual carefully. Be thoroughly familiar with the controls and the proper use of the equipment.
2. Never allow children to operate a power mower.
3. Keep the area of operation clear of all persons, particularly small children and pets.

PREPARATION

1. Thoroughly inspect the area where the equipment is to be used and remove all stones, sticks, wire, bones and other foreign objects.
2. Do not operate equipment when barefoot or wearing open sandals. Always wear substantial footwear.
3. Check the fuel before starting the engine. Do not fill the gasoline tank indoors, when the engine is running, or while the engine is still hot. Wipe off any spilled gasoline before starting the engine.
4. Disengage the self-propelled mechanism or drive clutch on units so equipped before starting the engine.
5. Never attempt to make a wheel adjustment while the engine is running.
6. Mow only in daylight or in good artificial light.
7. Never operate the equipment in wet grass. Always be sure of your footing; keep a firm hold on the handle and walk, never run.
5. If the equipment should start to vibrate abnormally, stop the engine and check immediately for the cause. Vibration is generally a warning of trouble.
6. Stop the engine whenever you leave the equipment, before cleaning the mower housing, and when making any repairs or inspections.
7. When cleaning, repairing or inspecting, make certain the blade and all moving parts have stopped. Disconnect the spark plug wire, and keep the wire away from the plug to prevent accidental starting.
8. Do not run the engine indoors.
9. Shut the engine off and wait until the blade comes to a complete stop before removing the grass catcher or unclogging chute.
10. Mow across the face of slopes, never up-and-down. Exercise extreme caution when changing direction on slopes. Do not mow excessively steep slopes.
11. Always disconnect electric mowers (line operated) before cleaning, repairing or adjusting.
12. Never operate mower without proper guards, plates or other safety protective devices in place.
13. Keep washout ports and other mower-housing service openings closed when mowing.

OPERATION

1. Do not change the engine governor settings or overspeed the engine.
2. Do not put hands or feet near or under rotating parts. Keep clear of the discharge opening at all times.
3. Stop the blade(s) when crossing gravel drive, walks or roads.
4. After striking a foreign object, stop the engine, remove the wire from the spark plug, thoroughly inspect the mower for any damage, and repair the damage before restarting and operating the mower.
1. Check the blade and engine mounting bolts at frequent intervals for proper tightness.
2. Keep all nuts, bolts, and screws tight to be sure the equipment is in safe working condition.
3. Never store the equipment with gasoline in the tank inside of a building where fumes may reach an open flame or spark. Allow the engine to cool before storing in any enclosure.
4. To reduce fire hazard, keep the engine free of grass, leaves, or excessive grease.
5. Check the grass catcher bag frequently for wear or deterioration. Replace with new bag for safety protection.

Assembly

Note: Reference to left or right side of machine is from the operator's position at the handle facing forward.

The lawn mower, except for the handle and controls is fully assembled, packed and shipped in one carton.

- 1 Place the left side of the handle assembly over the two studs extending out from the left side of the frame. (See figure 1.)
- 2 Using the two 5/16" hex head bolts, attach the right side of the handle assembly to the right side of the frame. (See figure 2.)

Note: Use the longer bolt in the rear hole.

- 3 Secure the handle on both sides with four lockwashers and four nuts.

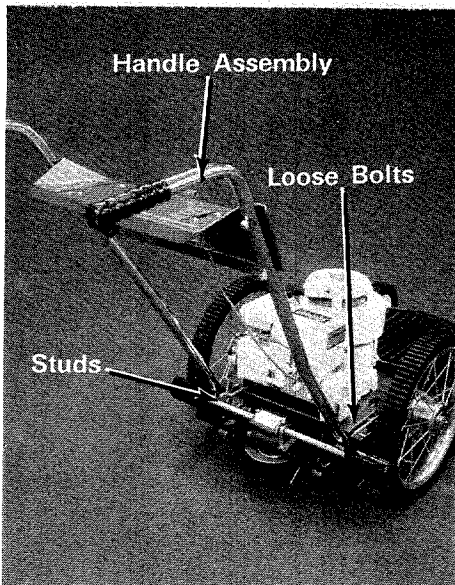


Figure 1

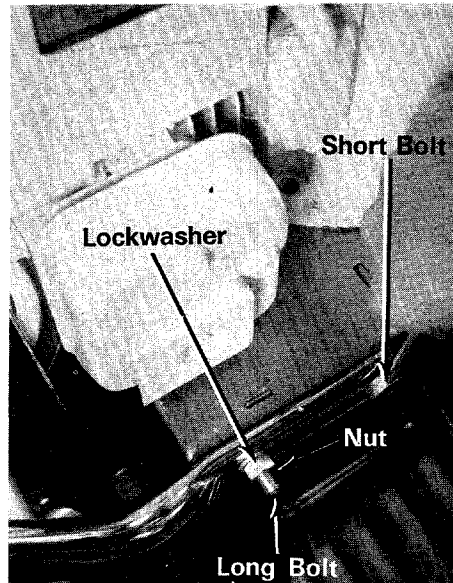


Figure 2

- 4 Place the ferrule, with the larger hole, into the pivot bracket on the left rear side of the mower and thread in the short (22 inch) control rod until the threads are even with the end of the ferrule. (See figure 3.)

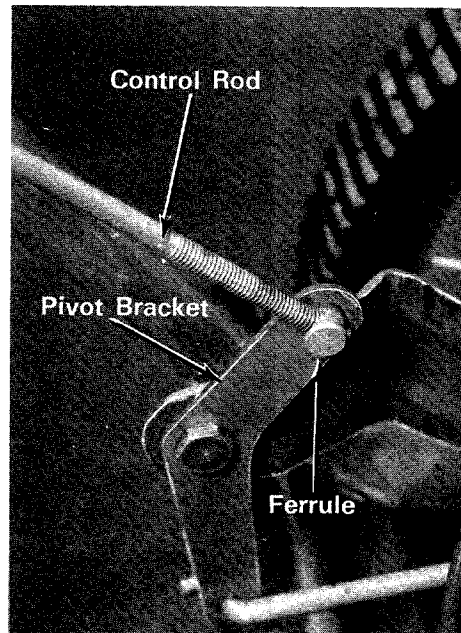


Figure 3

- 5 Attach the Blade Engagement Lever to the Control Rod as it is shown in figure 4.

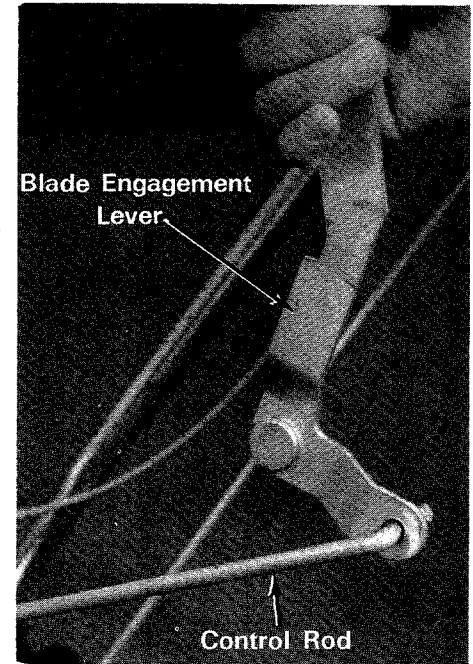


Figure 4

- 6 Assemble the control lever to the handle panel with the flat washer and locknut. (See figure 4.)

Note: If the length of the control rod has to be adjusted it is necessary to remove the flat washer and locknut.

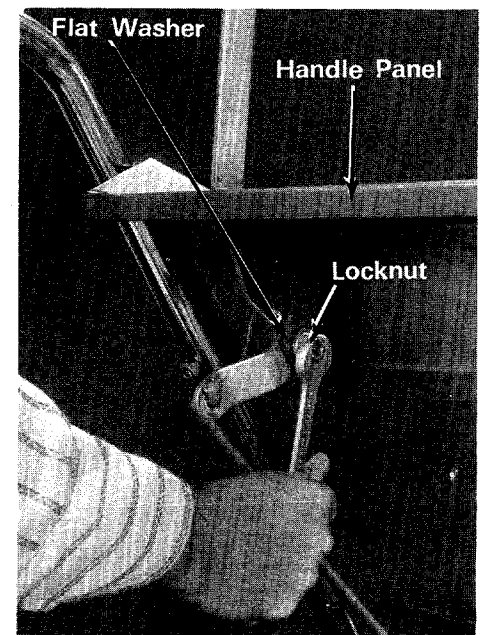


Figure 5

Assembly

- 7 Place the grip on the blade engagement lever. (See figure 6.)
- 8 Use the cable clamp to fasten the throttle control wire to the right handle.

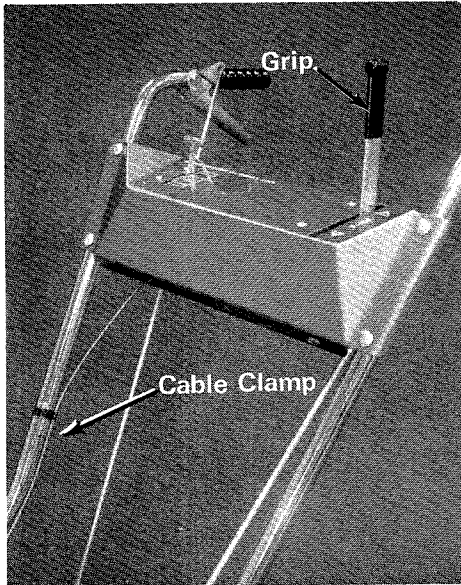


Figure 6

- 9 Place the ferrule with the smaller hole, in the bracket on the right rear side of the mower and thread in the longer (39 inches) clutch rod until $1\frac{3}{8}$ " extends through the ferrule. (See figure 7.)

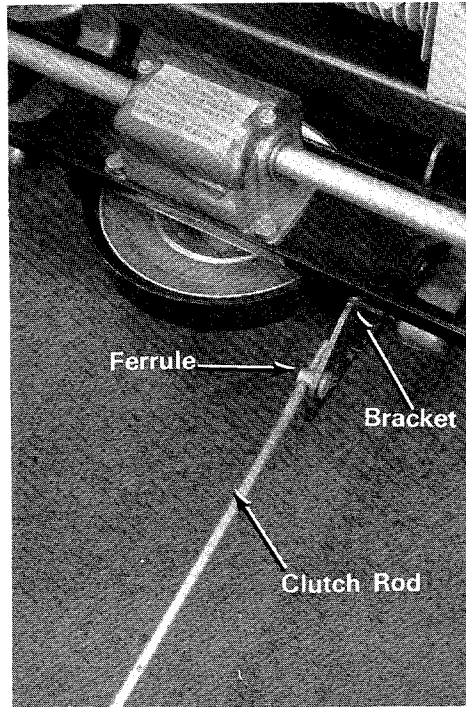
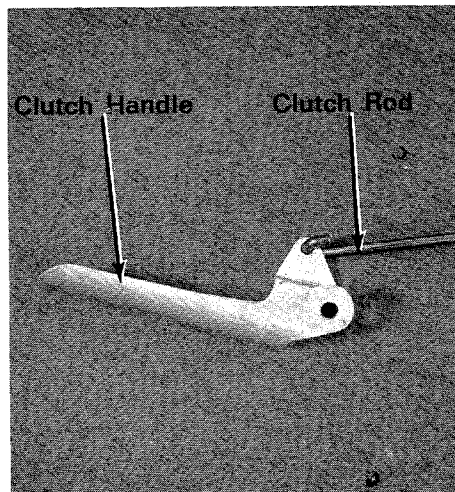


Figure 7

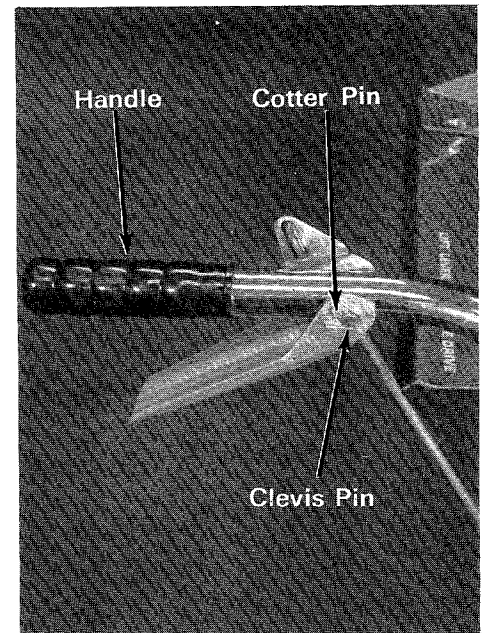
- 10 Attach the clutch handle to the clutch rod as it is shown in figure 8.



- 11 Assemble the clutch handle to the right handle with the drilled stud and cotter pin. (See figure 9.)

WARNING

Check the operation of the clutch. With the clutch handle released the pinions should not touch the rear wheels. Squeezing the clutch handle should engage the pinions firmly into the wheels. If it is necessary to adjust the length of the clutch rod, you have to remove the clevis pin and cotter pin.



Operation



Read and Heed Safety Rules on page 2.

Throttle Control

Your engine is equipped with a "Choke-a-Matic" choke. Push the throttle control lever all the way forward to activate the choke. Move the throttle control all the way back to stop the engine. The engine speed can be regulated by moving the throttle control between the fast and slow position. (See figure 10.)

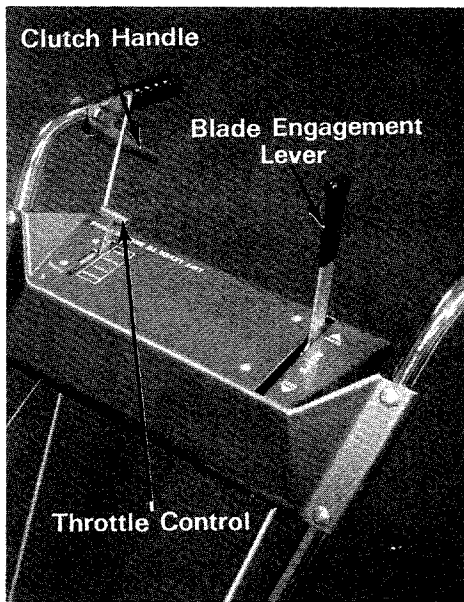


Figure 10

Clutch Handle

Squeezing the clutch handle engages the pinions into the rear wheels and drives the mower. Release the clutch handle and the mower is free wheeling. You must release the clutch handle when making a turn. (See figures 10, 11 and 12.)

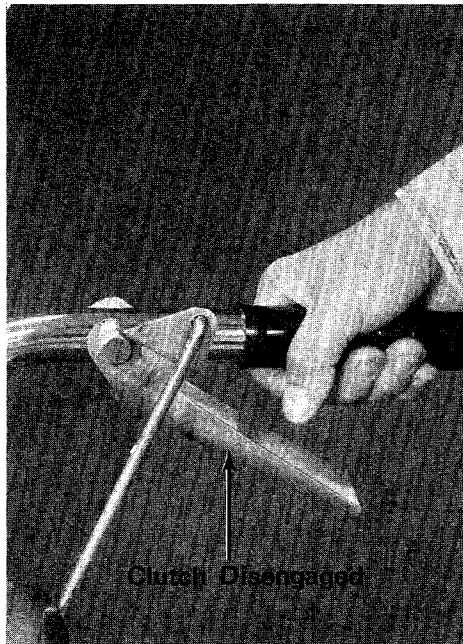


Figure 11

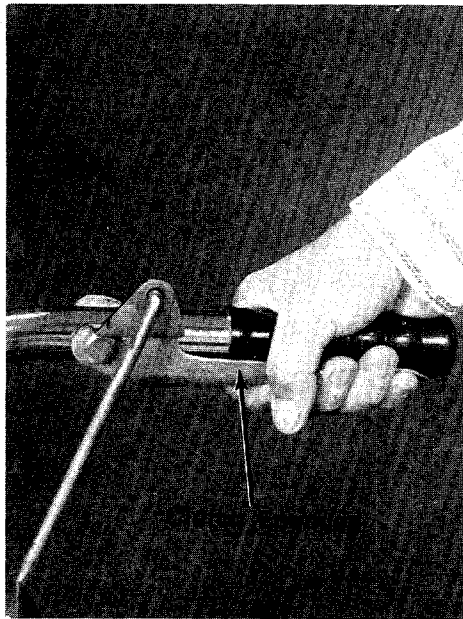


Figure 12

Blade Engagement Lever

Move the blade engagement lever forward to engage the blades. Pull the lever towards you to shut off the blades. The blades should be shut off when starting the mower and moving the mower without cutting grass. (See figure 10.)

Recoil Starter

Place your left foot on the side of the deck and pull the recoil starter handle rapidly. (See figure 13.)

Caution: Be sure the blade engagement lever is in the OFF position.



Figure 13

Height Adjustment

WARNING

Before changing the cutting height, stop the engine and disconnect the spark plug wire.

Unscrew the rear axle bolt and place it in one of the four height adjustment holes. The cupped washer must be installed exactly as shown in figure 14.

Adjust the front wheels in the same manner. All wheels must be in the same relative position. (See figure 15.)

Operation

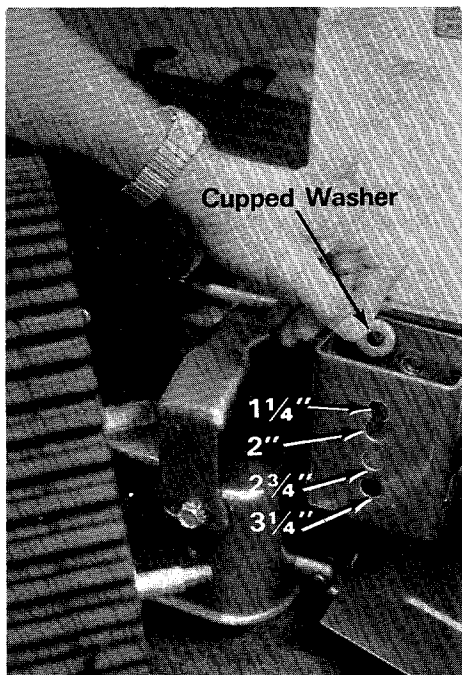


Figure 14

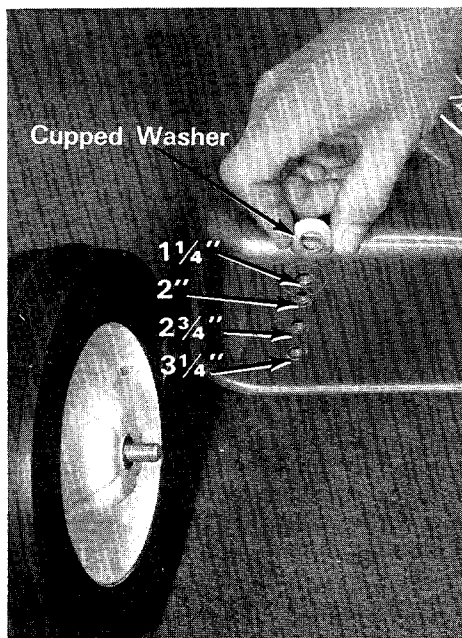


Figure 15

Maintenance

Lubrication

Rear Wheels—Remove the two plastic plugs on the hub and lubricate with a few drops of engine oil once a season. Replace the oil plugs. (See figure 16.)

Front Wheels—Lubricate with a few drops of engine oil once a season. (See figure 17.)

Pinion Bearings—Lubricate with a few drops of engine oil once a season. (See figure 18.)

Gear Box—Remove the two screws and lift off the cover. The lubricant should cover the lower gear. Check after every 25 hours of operation. Use a high temperature (450°F.) grease.

Oil all linkage such as the clutch and blade controls once a year with engine oil.

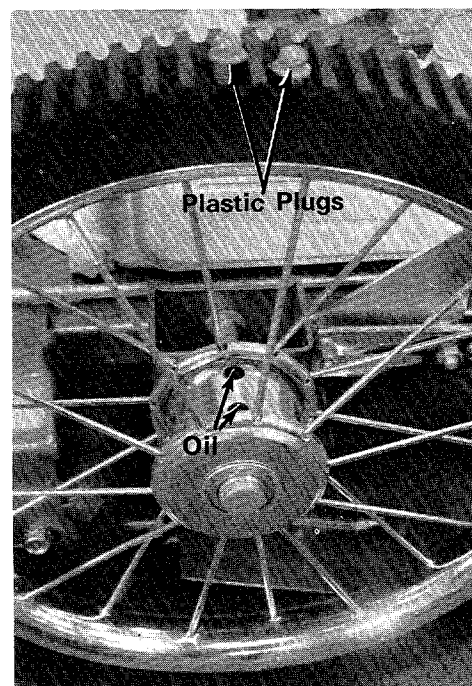


Figure 16

Maintenance

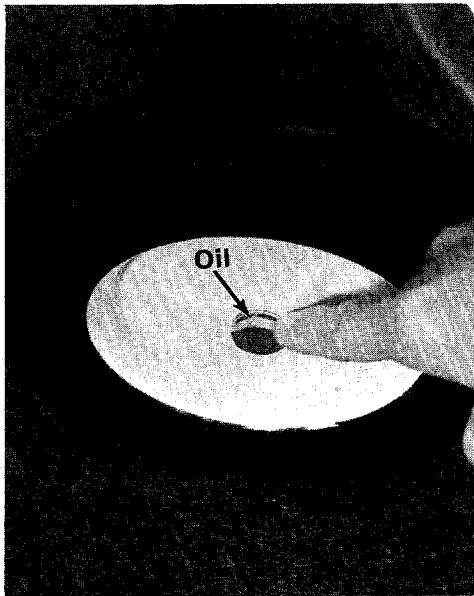


Figure 17

Blade Spindle Bearing—They are sealed and require no further lubrication.

Cutting Blade

The blade may be removed for sharpening or replacement as follows:

- 1 Remove the large bolt and lockwasher holding the blade and adapter to the engine crankshaft.
- 2 Remove the blade and adapter from the blade spindle.
- 3 Be careful not to lose the key on the crankshaft.
- 4 Remove the two smaller bolts, lockwashers and nuts holding the blade to the adapter (See figure 19.)

When sharpening the blade, follow the original angle of grind as a guide. It is extremely important that each cutting edge receives an equal amount of grinding to prevent an unbalanced blade. An unbalanced blade will cause excessive vibration when rotating at high speeds and may cause damage to the mower.

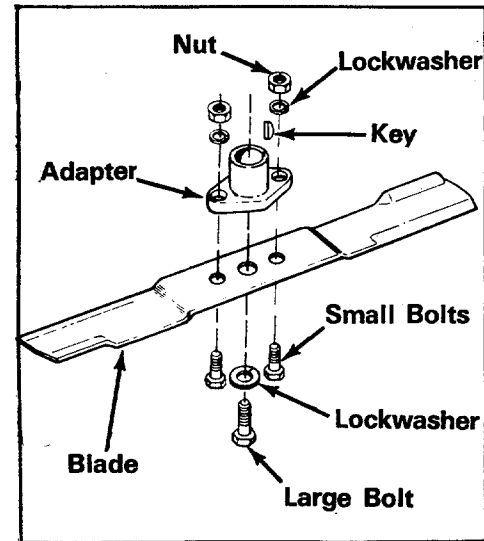


Figure 19

The blade can be tested for balance by balancing it on a screwdriver. Remove metal from the heavy side until it balances evenly. (See figure 20.)

Note: When replacing the blade, be sure the side of the blade marked "Bottom" or having the part number is facing the ground when the mower is in the operating position.

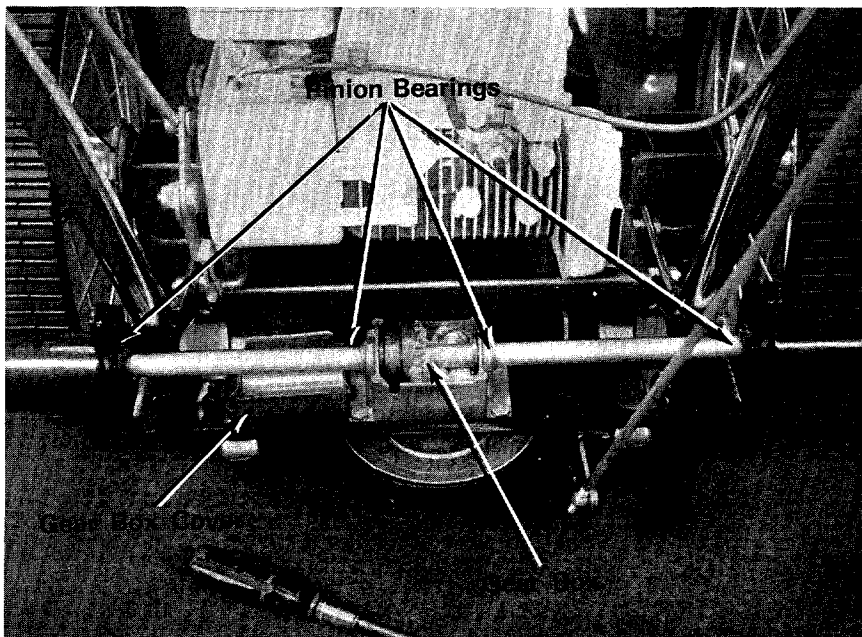


Figure 18

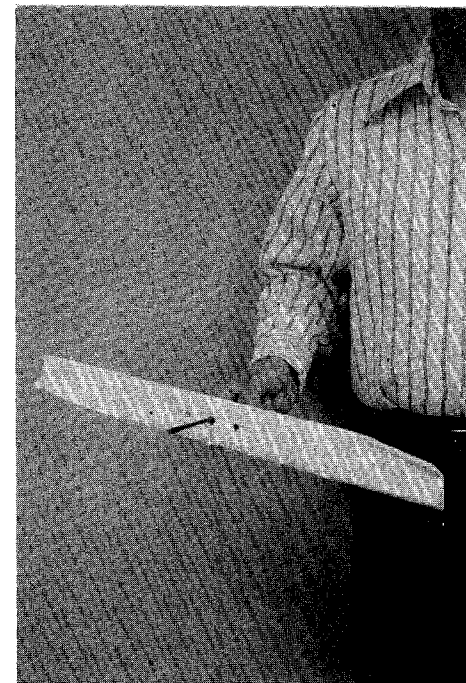


Figure 20

Maintenance

Blade Belt Replacement

The blade belt replacement may be made as follows:

- 1 Remove the blade spindle cover. (See figures 21 and 22.)
- 2 Remove the front belt guard.
- 3 Remove the blade tension spring.
- 4 Loosen the nut on the belt clip of the idler pulley.
- 5 Remove the brake lever assembly by removing the bolt and locknut. (See figure 22.)
- 6 Remove the drive belt from the engine pulley. (See figure 23.)
- 7 Remove the damaged or worn belt.
- 8 Place the new blade belt on the engine pulley. Do not bend belt guard pins. Belt should be inside of pins.
- 9 Replace the drive belt on the engine pulley.
- 10 Work the belt to the front and mount it on the blade spindle pulley. Replace the front belt guard.
- 11 Replace the brake lever assembly.
- 12 Slip the belt on the idler pulley.
- 13 Replace the blade tension spring.
- 14 Move the blade lockout handle to the ON position.
- 15 Position the belt clip on the idler pulley to clear the tightened belt. Secure the belt clip in position with the nut. (See figure 21.)
- 16 Replace the blade spindle cover.

Drive Belt Replacement

The drive belt replacement may be made as follows: (See figure 23.)

- 1 Remove the bottom frame assembly.
- 2 Remove the pulley from the pinion shaft. Do not misplace pulley key on pinion shaft.
- 3 Remove and replace the drive belt.
- 4 When replacing the pulley, be sure the key is in place on the pinion shaft and that the small hub of the pulley faces up.
- 5 Replace the bottom frame assembly.

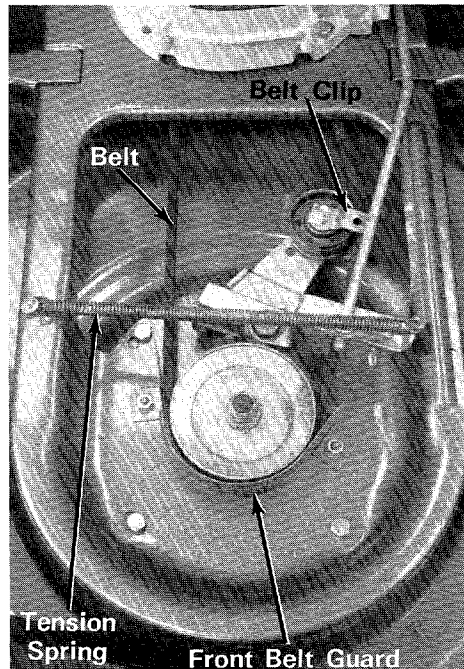


Figure 21

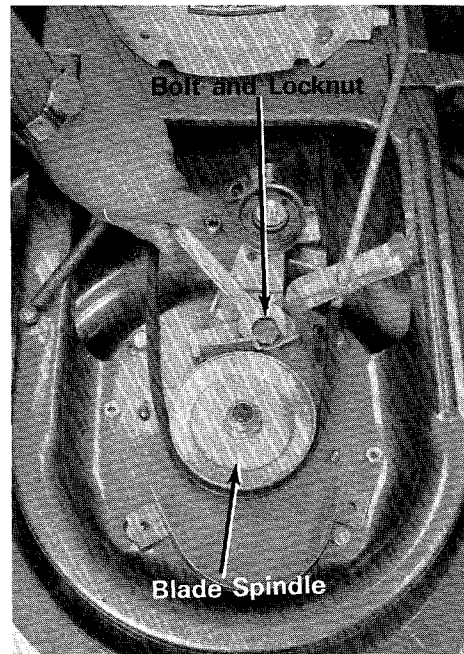


Figure 22

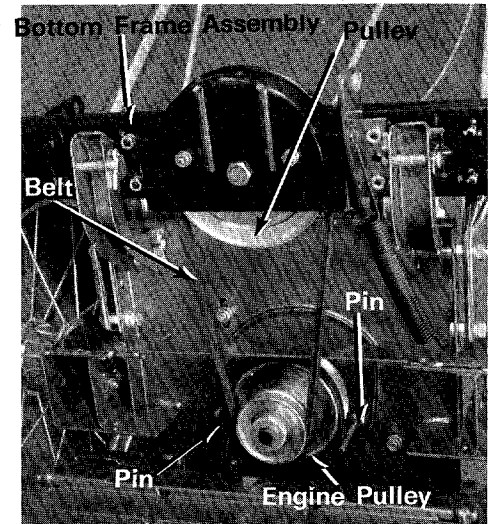


Figure 23

Maintenance

Troubleshooting

If a problem is encountered, refer to the chart on page 12.

Off-season Storage

If the machine is to be inoperative for a period longer than 30 days, the following procedures are recommended:

- 1 Working outdoors, drain all fuel from the fuel tank. Use a clean dry cloth to absorb the small amount of fuel remaining in the tank, then run the engine until all fuel in the carburetor is exhausted.



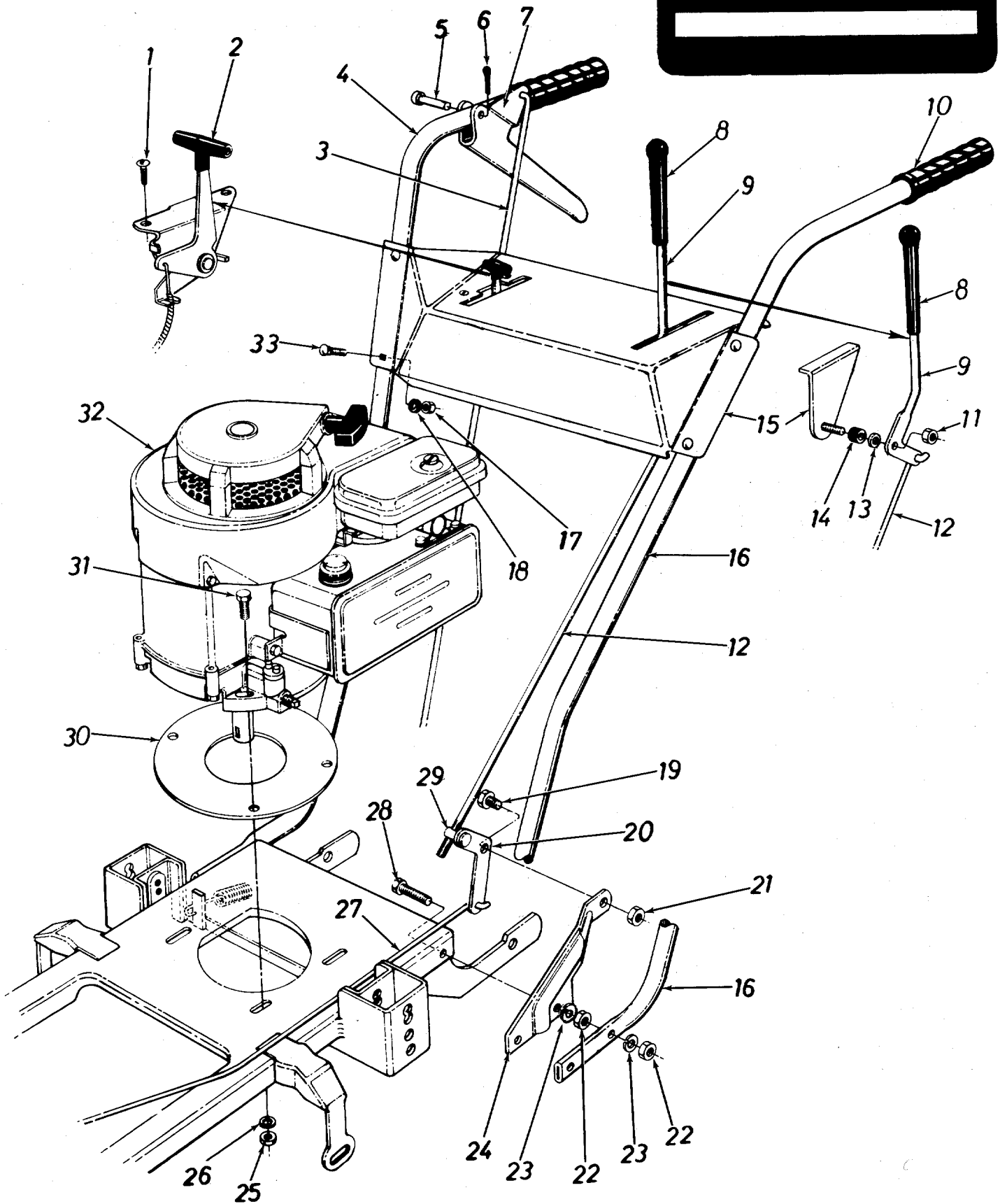
WARNING

Do not drain fuel while smoking, or if near an open fire.

- 2 Drain all the oil from the crankcase (this should be done after the engine has been operated and is still warm) and refill the crankcase with clean new oil.
- 3 Disconnect the spark plug wire and remove the spark plug from the cylinder. Pour about 2 or 3 tablespoons of engine oil into the cylinder, and then turn the engine over several times to spread out the oil. Replace the spark plug, but do not connect the wire.
- 4 Clean the engine and the entire mower thoroughly.
- 5 Lubricate all lubrication points then wipe the entire machine with an oiled rag in order to protect the surfaces.

125-550A

IF YOU WRITE TO US ABOUT THIS ARTICLE
OR IF YOU ORDER REPLACEMENT PARTS AL-
WAYS MENTION THIS MODEL & SERIAL NO
MODEL



PARTS LIST FOR MODEL 125-550A

REF. NO.	PART NO.	COLOR CODE	DESCRIPTION	NEW PART
1	710-0227		Hex Wash. Hd. AB-Tapp. Scr. #8 x .38	
2	746-0161		Throttle Control Ass'y.—Comp.	
3	747-0165		Control Rod—Drive	N
4	749-0190		Handle—R.H.	N
5	711-0415		Clevis Pin .380 Dia. x 1.62" Lg.	
6	714-0101		Cotter Pin—Internal 1/2" Dia.	
7	12572		Clutch Grip	N
8	720-0143		Grip	
9	747-0167		Clutch Lever	N
10	01166		Grip	
11	712-0116		Hex Ins. Jam Nut 3/8-24 Thd.	
12	747-0166		Control Rod—Blade	N
13	736-0300		Fl.-Wash.	
14	735-0126		Rubber Wash.	
15	12594-458		Handle Panel Ass'y.	N
16	749-0191		Handle—L.H.	N
17	712-0267		Hex Nut 5/16-18 Thd.*	
18	736-0119		L.-Wash. 5/16" Scr.*	
19	738-0147		Shld. Scr. .500 Dia. x .170	
20	12596		Pivot Bracket	N
21	712-0181		Hex Top L.-Nut 3/8-16 Thd.	
22	712-0123		Hex Nut 5/16-24 Thd.*	
23	736-0119		L.-Wash. 5/16" Scr.*	
24	12593		Pivot Mounting Bracket	N
25	712-0123		Hex Nut 5/16-24 Thd.*	
26	736-0119		L.-Wash. 5/16" Scr.*	
27	747-0168		Control Rod—Idler	N
28	710-0409		Hex Scr. 5/16-24 x 1.75" Lg.*	
29	711-0179		Ferrule	
30	08325-458		Belt Trap Ass'y.	
31	710-0158		Hex Scr. 5/16-24 x 1.25" Lg.*	
32	—		Engine	
33	710-0262		Carriage Bolt 5/16-18 x 1.50" Lg.*	

* For faster service, obtain standard nuts, bolts, and washers locally. If these items cannot be obtained locally, order by part number and size as shown on parts list.

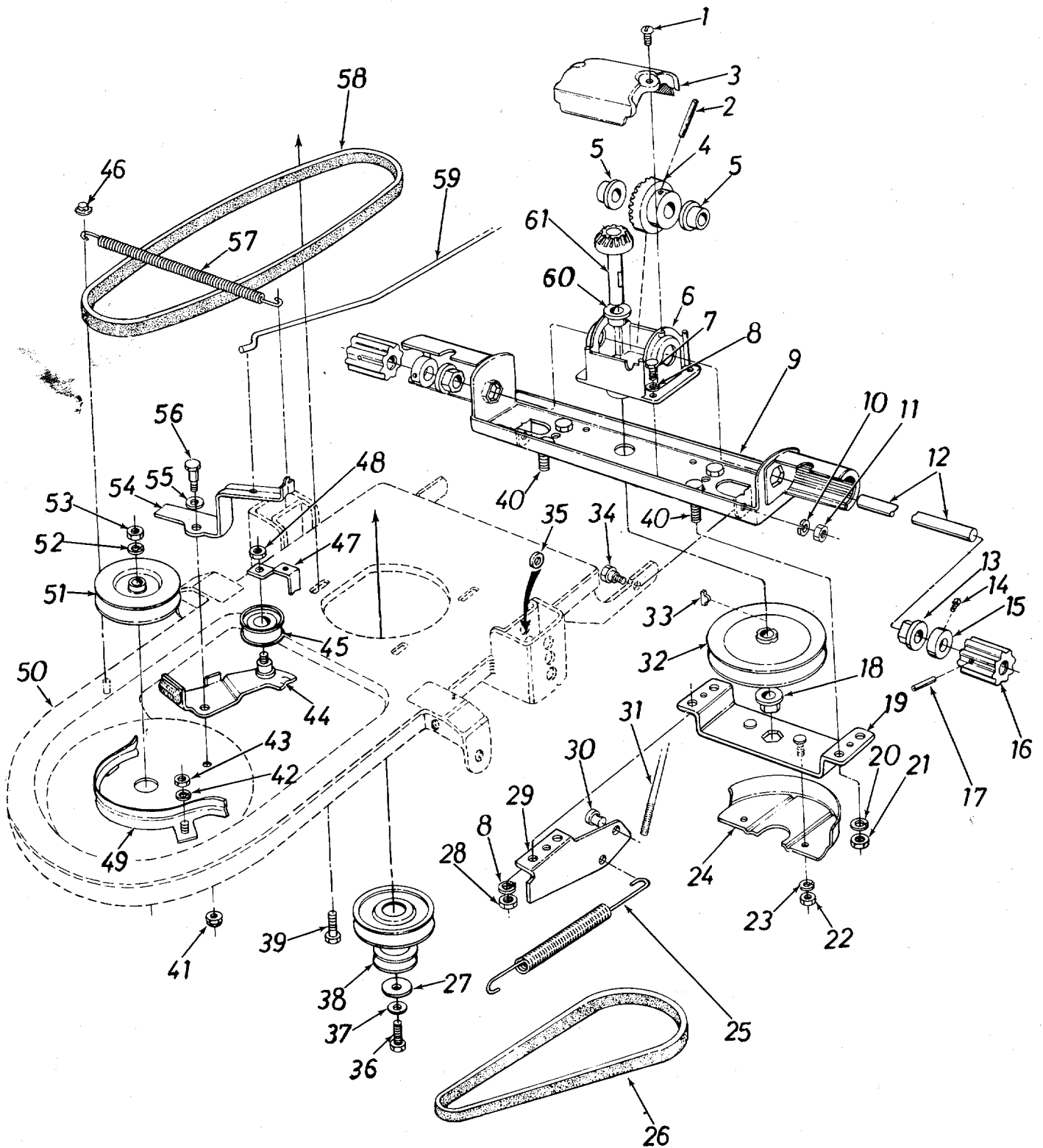
(458—Arctic Blue) — When ordering parts, if color or finish is important, use the appropriate color code shown at left. (e.g. Arctic Blue—11992 (458).)

The engine is not under warranty by the mower manufacturer. If repairs or service is needed on the engine, please contact your nearest authorized engine service outlet. Check the "Yellow Pages" of your telephone book under "Engines-Gasoline."

Find us fast in the



125-550A



PARTS LIST FOR MODEL 125-550A

REF. NO.	PART NO.	COLOR CODE	DESCRIPTION	NEW PART	REF. NO.	PART NO.	COLOR CODE	DESCRIPTION	NEW PART
1	710-0148		Hex Wash. Hd. F-Tapp. Scr. #8-32 x .38" Lg.		32	756-0254		5/8 V-Pulley	N
2	715-0246		Spring Pin Spirol .188 Dia. x 1.25" Lg.		33	714-0229		#2 Woodruff Key 3/32 x 1/2" Dia.	
3	08187-458		Gear Box Cover		34	738-0143		Shld. Scr. .498 Dia. x .340" Lg.	
4	748-0135		Bevel Gear		35	736-0105		Bellville Wash. 3/8" I.D.	
5	748-0110		Flange Bearing .628 I.D.		36	710-0152		Hex Scr. 3/8-24 x 1.00" H.T.	
6	08189		Gear Box		37	736-0217		L.-Wash. 3/8" Scr. H.D.	
7	710-0352		Hex Self Tapp. Scr. 1/4-20 x .38" Lg.		38	756-0205		Two Step Engine Pulley	
8	736-0329		L.-Wash. 1/4" Scr.*		39	710-0158		Hex Scr. 5/16-24 x 1.25" Lg.*	
9	12584-458		Top Drive Frame Ass'y.		40	710-0252		Hex Scr. 1/4-20 x .75" Lg.*	
10	736-0169		L.-Wash. 3/8" Scr.*		41	712-0181		Hex Top L.-Nut 3/8-16 Thd.	
11	712-0798		Hex Nut 3/8-16 Thd.*		42	736-0329		L.-Wash. 1/4" Scr.*	
12	08348		Drive Shaft		43	712-0287		Hex Nut 1/4-20 Thd.*	
13	748-0227		Flange Bearing .628" I.D.		44	12278		Idler Brkt. Ass'y. with Brake Shoe	
14	710-0421		Set Scr. 5/16-18 x .25" Lg.		45	756-0199		Fl.-Idler with Flanges 1.875 O.D.	
15	711-0169		Collar 3/8" I.D.		46	726-0111		Push Cap 3/16" Rod	
16	748-0182		Drive Pinion		47	04563		Belt Clip	
17	715-0120		Spring Pin Spiral .188 Dia. x 1.00" Lg.		48	712-0116		Hex Inserted L.-Nut 3/8-24 Thd.	
18	748-0226		Hex Flange Bearing .503" I.D.		49	08324-458		Belt Guard	
19	08774-458		Bottom Frame Ass'y.		50	12582-458		Frame Ass'y. Compl.	N
20	736-0329		L.-Wash. 1/4" Scr.*		51	09925		Sheave Ass'y.—4" Dia. (Blade Spindle)	
21	712-0287		Hex Nut 1/4-20 Thd.*		52	736-0921		L.-Wash. 1/2" Scr.*	
22	712-0287		Hex Nut 1/4-20 Thd.*		53	712-0922		Hex Jam Nut 1/2-20 Thd.	
23	736-0329		L.-Wash. 1/4" Scr.*		54	09371		Brake Lever	
24	08772-458		Pulley Cover		55	736-0108		Fl.-Wash. .510" I.D. x .750" O.D.	
25	732-0185		Extension Spring		56	738-0234		Shld. Scr. .500" Dia. x .295	
26	754-0177		V-Belt 1/2" x 32" Lg. (Dr. Belt)		57	732-0158		Blade Tension Spring	
27	736-0235		Fl.-Wash. .406" I.D. x 1.25" O.D.		58	754-0109		V-Belt 1/2" x 43" Lg.	
28	712-0287		Hex Nut 1/4-20 Thd.*		59	747-0168		Control Rod—Idler	N
29	12587-458		Spring Bracket	N	60	748-0108		Flange Brg. .503 I.D.	
30	711-0619		Ferrule—1/4"	N	61	07957		Pinion Shaft Ass'y.	
31	747-0165		Control Rod—Drive	N					

* For faster service, obtain standard nuts, bolts, and washers locally. If these items cannot be obtained locally, order by part number and size as shown on parts list.

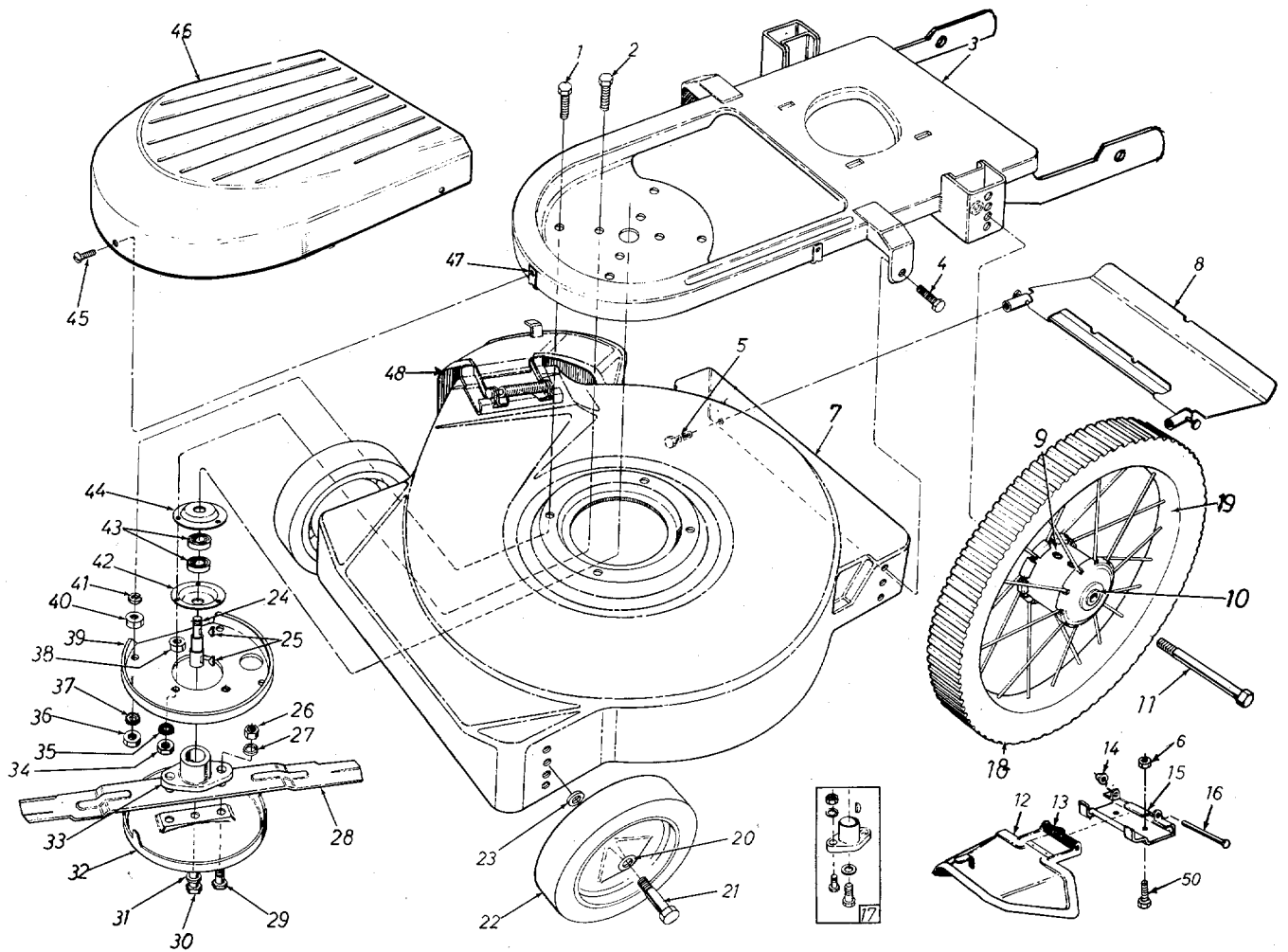
(458—Arctic Blue) — When ordering parts, if color or finish is important, use the appropriate color code shown at left. (e.g. Arctic Blue—11992 (458).)

The engine is not under warranty by the mower manufacturer. If repairs or service is needed on the engine, please contact your nearest authorized engine service outlet. Check the "Yellow Pages" of your telephone book under "Engines-Gasoline."

Find us fast in the



125-550A



PARTS LIST FOR MODEL 125-550A

REF. NO.	PART NO.	COLOR CODE	DESCRIPTION	NEW PART	REF. NO.	PART NO.	COLOR CODE	DESCRIPTION	NEW PART
1	710-0158		Hex Scr. 5/16-24 x 1.25" Lg.*		25	714-0365		#6 Hi-Pro Key 5/32 x 5/8" Dia.	
2	710-0158		Hex Scr. 5/16-24 x 1.25" Lg.*		26	712-0123		Hex Nut 5/16-24 Thd.*	
3	12582-458		Frame Ass'y. Comp.	N	27	736-0119		L-Wash. 5/16" Scr.*	
4	710-0209		Hex Sems Scr. 3/8-16 x .62" Lg.*		28	742-0125		22" Blade	
5	710-0567		Hex Sems Scr. 1/4-28 x .62" Lg.		29	710-0117		Hex Scr. 5/16-24 x 1.00" H.T.	
6	712-0287		Hex Nut 1/4-20 Thd.*		30	710-0459		Hex Scr. 3/8-24 x 1.50" H.T.	
7	12422-458		Deck Ass'y.	N	31	736-0217		L-Wash. 3/8" Scr. H.D.	
8	11193-458		Rear Protec. Shield Ass'y. Comp.		32	07919		Scalp Plate	
9	718-0132		Oil Cap		33	10769		Blade Adapter Kit	
10	741-0113		Ball Brg. .504" I.D. x 1.38" Dia.		34	712-0123		Hex Nut 5/16-24 Thd.*	
11	738-0114		Should. Scr. .498" Dia. x 4.755"		35	736-0119		L-Wash. 5/16" Scr.*	
12	11141-458		Chute Deflector Ass'y.		36	712-0123		Hex Nut 5/16-24 Thd.*	
13	732-0253		Torsion Spring		37	736-0119		L-Wash. 5/16" Scr.*	
14	726-0106		Push Nut 1/4" Rod		38	712-0123		Hex Nut 5/16-24 Thd.*	
15	11130-458		Adapter Plate		39	12281		Blade Reinforcement Plate	
16	711-0555		Pivot Pin		40	712-0123		Hex Nut 5/16-24 Thd.*	
17	10769		Blade Adapter Kit		41	736-0119		L-Wash. 5/16" Scr.*	
18	734-0438		16" Rear Wheel Ass'y.—Comp.		42	08253		Bearing Housing	
19	734-0180		16" Rear Wheel—Less Tire		43	741-0919		Ball Brg. .787" I.D. x 1.85" O.D.	
	734-0391		Semi Pneumatic Tire 16 x 1.75		44	08253		Bearing Housing	
			Gear Tread		45	710-0436		Hex Tap. Scr. #10-24 x .62"*	
20	741-0178		Ball Brg. .38 I.D.		46	08295-458		Blade Spindle Cover	
21	710-0427		Hex Scr. 3/8-16 x 2.00" Lg.*		47	712-0526		Speed Nut #10	
22	734-0642		Front Wheel Ass'y. Comp.		48	11679-458		Chute Deflector Ass'y.—Comp.	
23	736-0105		Belleville Wash. 3/8" I.D.		49	741-0177		Blade Spindle Ass'y.—Comp.	
24	738-0251		Blade Spindle					(Inc. Ref. #24, 42, 43, 44)	
					50	710-0252		Hex Scr. 1/4-20 x .75" Lg.*	

*For faster service, obtain standard nuts, bolts, and washers locally. If these items cannot be obtained locally, order by part number and size as shown on parts list.

(458—Arctic Blue) — When ordering parts, if color or finish is important, use the appropriate color code shown at left. (e.g. Arctic Blue—11992 (458).)

The engine is not under warranty by the mower manufacturer. If repairs or service is needed on the engine, please contact your nearest authorized engine service outlet. Check the "Yellow Pages" of your telephone book under "Engines—Gasoline."

Find us fast in the



NOTE

The manufacturer DOES NOT recommend the use of any accessory on this rotary mower other than those manufactured by MTD Products Inc.

★ IMPORTANT

After striking a foreign object, stop the engine, remove wire from spark plug, thoroughly inspect the mower for any damage, and repair the damage before re-starting and operating the mower.

GRASS CATCHER Model No.195-003A is available as optional equipment for the mower shown in this manual.

WARNING:

1. The mower should not be operated without the entire grass catcher or chute deflector in place.
2. The mower should not be operated without the protective shield on the rear of the deck in place.

NOTE:

Under normal usage bag material is subject to wear, and should be checked periodically. Be sure any replacement bag complies with the mower manufacturer's recommendations.

For replacement bags, use only factory authorized replacement bag No. 764-0119.

PARTS INFORMATION

DEFECTIVE OR MISSING PARTS must be reported to the factory immediately. Such claims must include your model number and date of purchase.

POWER EQUIPMENT PARTS AND SERVICE

Parts and service for all MTD manufactured power equipment are available through the authorized service firms listed below. All orders should specify the model number of your unit, parts numbers, description of parts and the quantity of each part required.

A 1 Engine & Mower Co.
327 East 9th Street
Salt Lake City, Utah 84102

Auto Electric & Carburetor Co.
2325 4th Avenue, S.
P. O. Box 1948
Birmingham, Alabama 35233

Automotive Equipment Service Co.
3117 Holmes Street
Kansas City, Missouri 64109

Bailey's Rebuild Inc.
1325 E. Madison Street
Seattle Washington 98102

Bleckie, Inc.
7900 Lorain Avenue
Cleveland, Ohio 44102

Brown Equipment Distributor Inc.
110 Beech Street
Corydon, Indiana 47112

Bullard Supply
2409 Commerce Street
Houston, Texas 77003

Catto & Putty, Inc.
P. O. Box 2408
510 Soledad Street
San Antonio, Texas 78205

Center Supply Company
6867 New Hampshire Avenue
Takoma Park, Maryland 20012

Dixie Sales Company
P. O. Box 1408
327 Battleground Avenue
Greensboro, North Carolina 27402

East Point Cycle & Key Shop
1617 Whiteway
East Point, Georgia 30044

Gamble Distributors
West End Avenue
Carthage, New York 13619

Garden Equipment Co., Inc.
6600 Cherry Avenue
Long Beach, California 90805

Gardenville Supply, Inc.
Pipersville, Pennsylvania 18947

Henry W. O'Neil & Assoc., Inc.
410 North Goodman Street
Rochester, New York 14609

Henzler, Inc.
2015 Lemay Ferry Road
St. Louis, Missouri 63125

Kenton Supply
8216 North Denver Avenue
Portland, Oregon 97217

Kimber's Inc.
115 W. Geddes St.
Syracuse, New York 13204

Marr Brothers
423 E. Jefferson
Dallas, Texas 75203

McClure Lawn & Garden Supply
1114 Lexington Avenue
Mansfield, Ohio 44907

Memphis Cycle & Supply Co.
421 Monroe Avenue
Memphis Tennessee 38103

Morton B. Collins Co.
300 Birnie Avenue
Springfield, Massachusetts 01107

Mox-All of Florida, Inc.
365 Greco Avenue
Coral Gables, Florida 33146

National Central
687 Seville Rd.
Wadsworth, Ohio 44281

Parts & Sales Inc.
2101 Industrial Pkwy.
Elkhart, Indiana 46514

Power Equipment Distributor
36463 So. Gratiot Avenue
Mt. Clemens, Michigan 48043

Power Lawn & Garden Equip. Co.
2551-2571 J. F. Kennedy Road
Dubuque, Iowa 52001

Radco Distributors
2403 Market Street
P. O. Box 3216
Jacksonville, Florida 32202

Raub Supply Company
James & Mulberry Sts.
Lancaster, Pennsylvania 17604

Richmond Battery & Ignition
P. O. Box 25369 - 957 Myers St.
Richmond, Virginia 23260

R. P. W., Inc.
623 S. 16th Street
Omaha, Nebraska 68102

Smith Hardware Company
515 N. George Street
Goldsboro, North Carolina 27530

South Denver Lawn Equip. Co.
527 West Evans
Denver, Colorado 80223

Suhren Engine
8330 Earhart Blvd.
New Orleans, Louisiana 70118

Sutton's Lawn Mower Shop
Route 4, Box 343
North Little Rock, Arkansas 72117

Woodson Sales & Service
1702 North Sylvania
Ft. Worth, Texas 76111

WARRANTY PARTS AND SERVICE POLICY

The purpose of warranty is to protect the customer from defects in workmanship and materials, defects which are NOT detected at the time of manufacture. It does not provide for the unlimited and unrestricted replacement of parts. Use and maintenance are the responsibility of the customer. The manufacturer cannot assume responsibility for conditions over which it has no control. Simply put, if it's the manufacturer's fault, it's the manufacturer's responsibility; if it's the customer's fault, it's the customer's responsibility.

CLAIMS AGAINST THE MANUFACTURER'S WARRANTY INCLUDES

1. Replacement of Missing Parts on new equipment.
2. Replacement of Defective Parts within the warranty period.
3. Repair of Defects within the warranty period.

All claims MUST be substantiated with the following information:

1. Model Number of unit involved.
2. Date unit was purchased or first put into service.
3. Date of failure.
4. Nature of failure.