

Owner's Operating Service Instruction Manual

10¢

Model No.
125-350A

- ASSEMBLY
- OPERATION
- REPAIR PARTS

22" SELF-PROPELLED ROTARY MOWER

WARRANTY

For one year from date of purchase, MTD Products Inc will replace for the original purchaser, free of charge, F.O.B. factory or authorized service firm, any part or parts found to be defective in material or workmanship. All transportation charges on parts submitted for replacement under this warranty must be paid by the purchaser. This warranty does not include replacement of parts which become inoperative through misuse, excessive use, accident, neglect, improper maintenance or alterations by unauthorized persons. This warranty does not include the engine, motor, battery, battery charger or any component parts thereof. For service on these units, refer to the applicable manufacturer's warranty.

The above warranty will apply only to the original owner and will be effective only if the warranty card has been properly processed. It will not apply where the unit has been used commercially.

Warranty service is available through your local authorized service dealer or distributor. UNDER NO CIRCUMSTANCES WILL THE RETURN OF A COMPLETE UNIT BE ACCEPTED BY THE FACTORY UNLESS PRIOR WRITTEN PERMISSION HAS BEEN EXTENDED.

MTD PRODUCTS INC • 5389 WEST 130th STREET • P. O. BOX 2741 CLEVELAND OHIO 44111

PRINTED IN U.S.A.

FORM NO. 770-5662

Safety Rules

Training

- 1 Read the operating and service instruction manual carefully. Be thoroughly familiar with the controls and the proper use of the equipment.
- 2 Never allow children to operate a power mower.
- 3 Keep the area of operation clear of all persons, particularly small children, and pets.

Preparation

- 1 Thoroughly inspect the area where the equipment is to be used and remove all stones, sticks, wires, bones, and other foreign objects.
- 2 Do not operate the equipment when barefoot or wearing open sandals. Always wear substantial footwear.
- 3 Check the fuel before starting the engine. Do not fill the gasoline tank indoors, when the engine is running, or while the engine is still hot. Wipe off any spilled gasoline before starting the engine.
- 4 Disengage the self-propelled mechanism or drive clutch on units so equipped before starting the engine.
- 5 Never attempt to make a wheel height adjustment while the engine is running.
- 6 Mow only in daylight or in good artificial light.
- 7 Never operate the equipment in wet grass. Always be sure of your footing; keep a firm hold on the handle and walk; never run.

Operation

- 1 Do not change the engine governor settings or overspeed the engine.
- 2 Do not put hands or feet near or under rotating parts. Keep clear of the discharge opening at all times.
- 3 Stop the blade(s) when crossing gravel drives, walks, or roads.
- 4 After striking a foreign object, stop the engine, remove the wire from the spark plug, thoroughly inspect the mower for any damage, and repair the damage before restarting and operating the mower.
- 5 If the equipment should start to vibrate abnormally, stop the engine, and check immediately for the cause. Vibration is generally a warning of trouble.
- 6 Stop the engine whenever you leave the equipment, before cleaning the mower housing, and when making any repairs or inspections.
- 7 When cleaning, repairing, or inspecting, make certain the blade and all moving parts have stopped. Disconnect the spark plug wire, and keep the wire away from the plug to prevent accidental starting.
- 8 Do not run the engine indoors.
- 9 Shut the engine off and wait until the blade comes to a complete stop before removing the grass catcher or unclogging chute.

10 Mow across the face of slopes; never up and down. Exercise extreme caution when changing direction on slopes. Do not mow excessively steep slopes.

11 Always disconnect electric mowers (line operated) before cleaning, repairing, or adjusting.

12 Never operate the mower without proper guards, plates, or other safety protective devices in place.

13 Keep washout ports and other mower-housing service openings closed when mowing.

14 DO NOT OPERATE this mower with the chute doors open unless the entire grass catcher is properly mounted on the mower.

Maintenance and Storage

- 1 Check the blade and the engine mounting bolts at frequent intervals for proper tightness.
- 2 Keep all nuts, bolts and screws tight to be sure the equipment is in safe working condition.
- 3 Never store the equipment with gasoline in the tank inside a building where fumes may reach an open flame or spark. Allow the engine to cool before storing in any enclosure.
- 4 To reduce fire hazard, keep the engine free of grass, leaves, or excessive grease.
- 5 Check the grass catcher bags frequently for wear or deterioration. Replace with new bags for safety protection.

Assembly - Lawn Mower

Note: Reference to Left or Right side of machine is from the operator's position at the handle facing forward.

The Lawn Mower, except the handle and throttle control, is fully assembled, packed and shipped in one container.

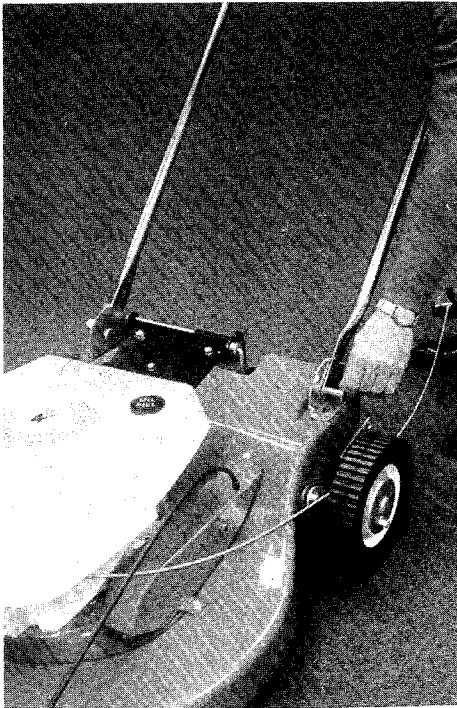


Figure 1

Attaching the Handle

- 1 The throttle is attached to the engine. Extend the throttle control and lay it on the floor. Be careful not to bend or kink the wire.

- 2 Attach the lower handle over the pins on the handle brackets located on the rear of the mower. (See figure 1.)

- 3 Place the two cotter hairpins in the holes in the pins.

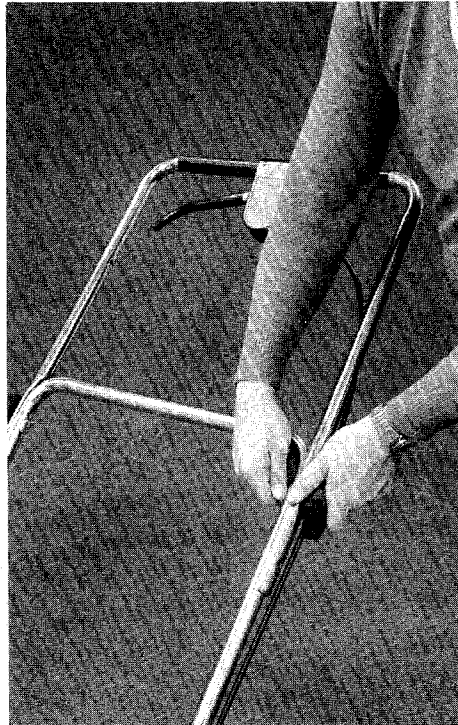


Figure 2

- 4 Assemble the upper handle with the engagement lever attached, to the lower handle with the two knobs. Make sure the single hole for the throttle is on the right side of the handle. The knobs can be either to the inside or the outside of the handle. (See figure 2.)

Note: There are two height positions for the handle. See the Operation section of this handbook for adjustment.

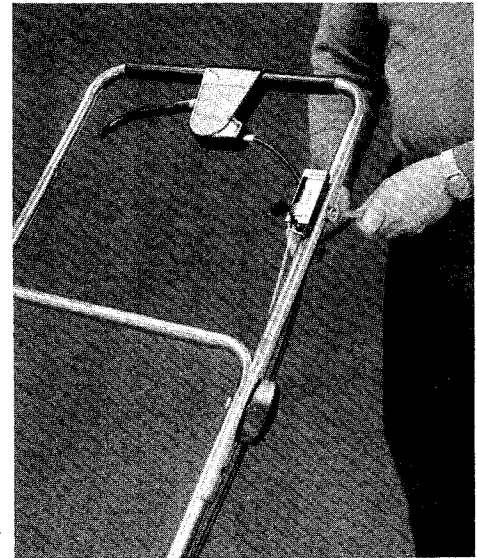


Figure 3

- 5 Assemble the throttle control to the upper handle with the nut and bolt. (See figure 3.)
- 6 Secure the throttle control wire and clutch wire to the lower handle with the cable clips. (See figure 4.)

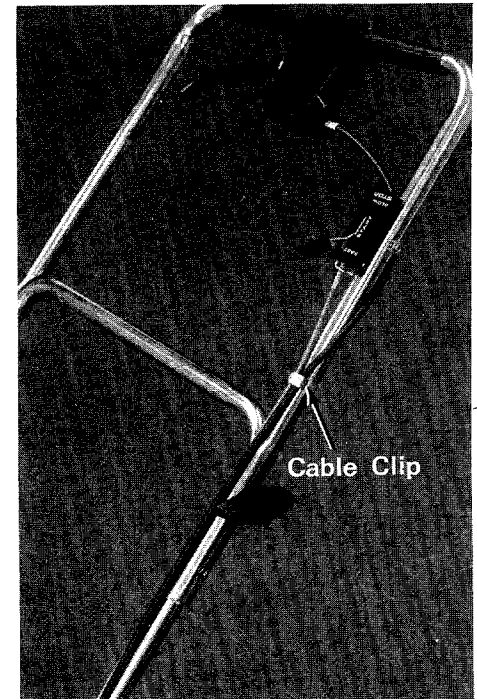


Figure 4

Assembly - Grass Catcher

The grass catcher is partially assembled. The hardware needed is in the assembly pack. It consists of

- 7 bolts $\frac{3}{8}$ " long
- 4 bolts 1" long
- 11 lockwashers
- 11 nuts
- 2 cotterpins
- 1 bolt $\frac{3}{4}$ " long
- 1 locknut $\frac{5}{16}$ " fine
- 1 lever assembly

- 1 Assemble the rear frame to the front frame with the four 1" bolts, lockwashers and nuts. (See figure 5.)
- 2 Slip the bag over the frame from the rear.
- 3 Fasten the bag to the frame with the 7 bolts $\frac{3}{8}$ " long, lockwashers and nuts. Start with the three holes on top of the bag, then do both sides
- 4 Fit the lower edge of the bag into the slot in the bottom of the front frame and place the two cotter pins through the front frame and the eyelets in the bag.
- 5 Bend the ends of the cotter pins over.
- 6 Assemble the lever assembly to the front frame with a $\frac{3}{4}$ " bolt and $\frac{5}{16}$ " fine thread nut.

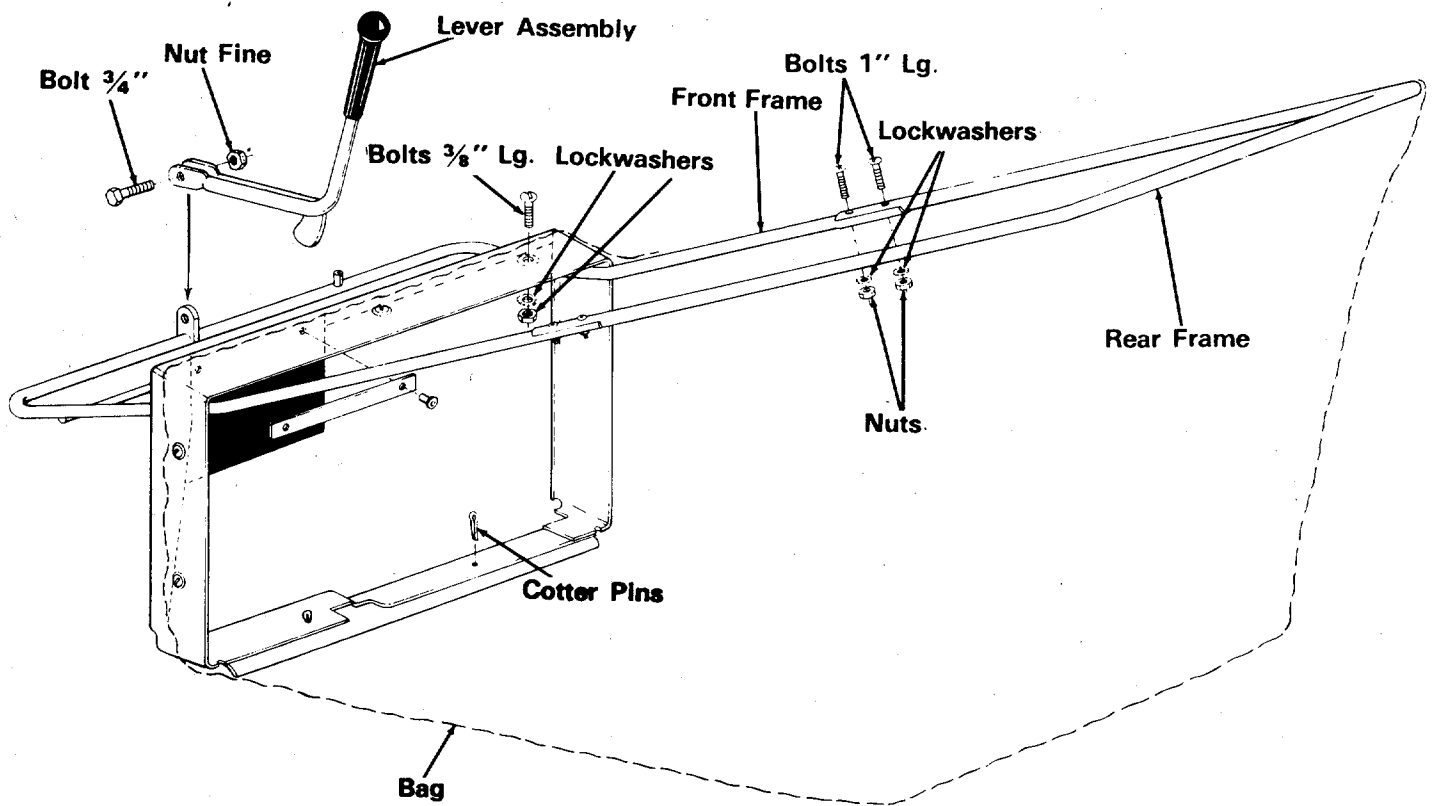


Figure 5

Operation

Before starting the engine fill the crankcase with oil

Warning: The mower shall not be operated without the entire grass catcher or rubber protective shield in place:

Note: Under normal usage the grass catcher bag material is subject to wear and should be checked periodically.

This mower is designed to be operated at full throttle to give you the best cut and do the most effective job of bagging the cut grass.

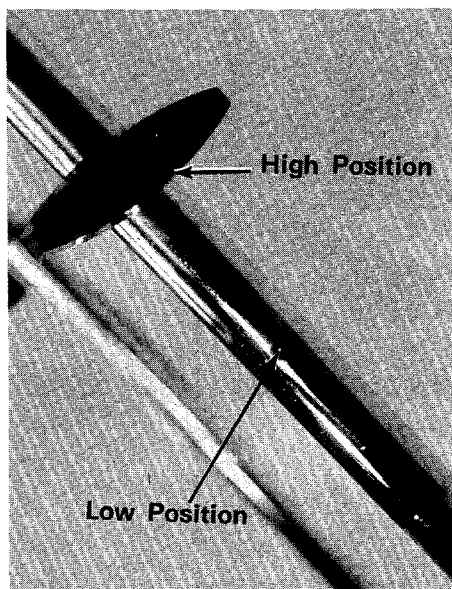


Figure 6

Handle Position

The upper handle can be adjusted to a high or low position. The operator of the lawn mower can easily adjust the handle position by unscrewing the two knobs, removing the two bolts and reassembling in the other position. No tools are necessary to make this adjustment. (See figure 6.)

Attaching Grass Catcher

The doors shown in figure 7 cannot be opened to discharge the grass unless the grass catcher is in place.

Warning: Under no circumstances should the doors be opened while the engine is operating.

- 1 Attach the grass catcher frame to the front of the adapter as shown in figure 8.
- 2 Push down on the back of the bag until the entire grass catcher seats into the bracket.
- 3 Move the locking lever towards the rear of the mower. (See figure 9.) This locks the grass catcher in place and opens the doors.
- 4 To remove the grass catcher, unlock the locking lever and lift off the grass catcher.



Figure 7

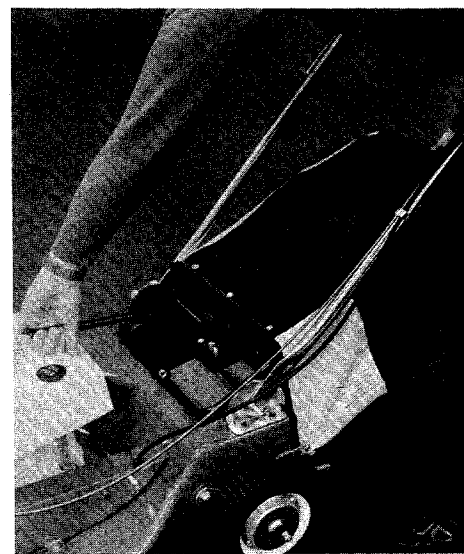


Figure 8



Figure 9

Throttle Control

Your engine has an automatic choke. The throttle control is used to regulate the engine speed and stop the engine. The engine can be started with the throttle control lever anywhere in the START position. Move the throttle control to the STOP position to stop the engine. (See figure 10.)

Operation



The blade continues to rotate when the clutch is released.

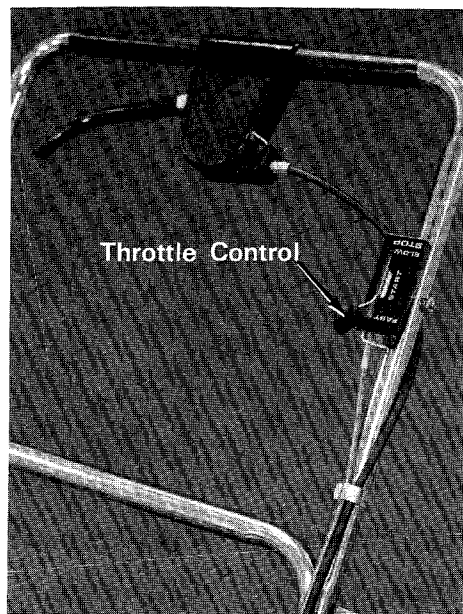


Figure 10

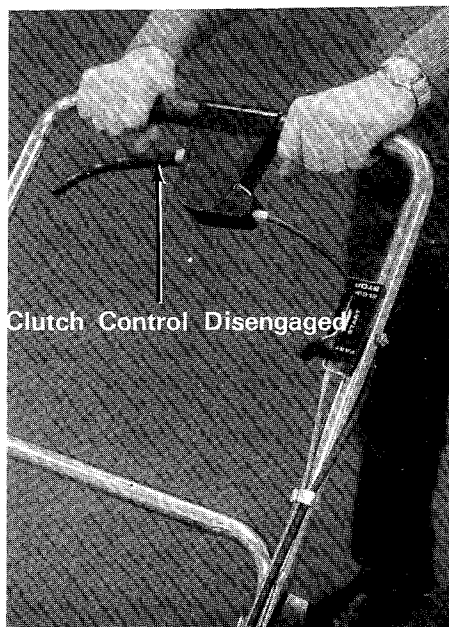


Figure 12

Start the engine from the left side by lifting up on the starter handle and placing your foot on the mower deck. (See figure 13.)



Figure 11

Clutch Control

Squeezing the clutch control engages the drive mechanism to the rear wheels. Releasing the clutch control stops the rear wheels from driving. Release the clutch control to slow down when negotiating an obstacle, making a turn or stopping. (See figures 11 and 12.)

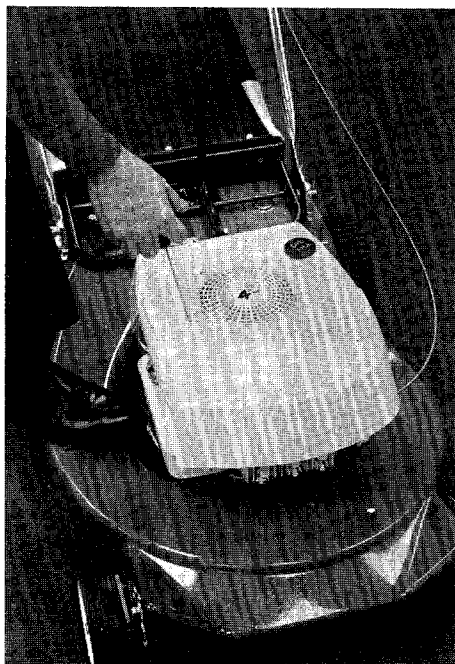


Figure 13

Height Adjustment

Warning: Before changing the cutting height, stop the engine and disconnect the spark plug wire. Adjustments may be made by moving the height adjustment lever on each wheel to the desired position. (See figure 14.) There are five cutting heights. All four height adjusters should be in the same relative position.



Figure 14

Handle Storage

The handle can be stored in the upright position to take less room. Grasp the lower handle at the bottom, pull apart slightly and tip the handle forward. It will lock in this position. Reverse this procedure to place the handle in the operating position. (See figure 15.)

Operation

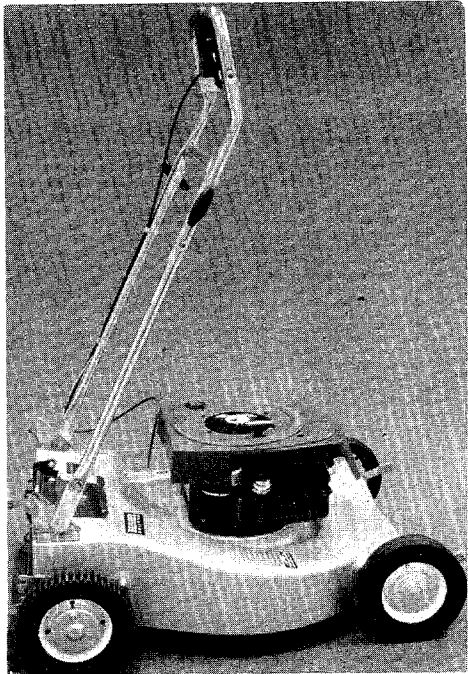


Figure 15

Folding the Handle

The handle can be folded completely for storage. To fold the handle, loosen the black plastic knobs on each side of the handle, swing the upper handle down as you pivot the lower handle forward. (See figures 16, 17 and 18.)

The following maintenance and adjustment instructions are primarily for the mower. For the engine refer to the Engine Operating and Maintenance section of this handbook.

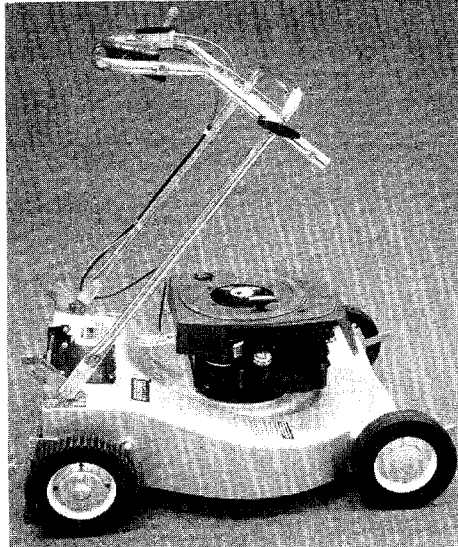


Figure 17

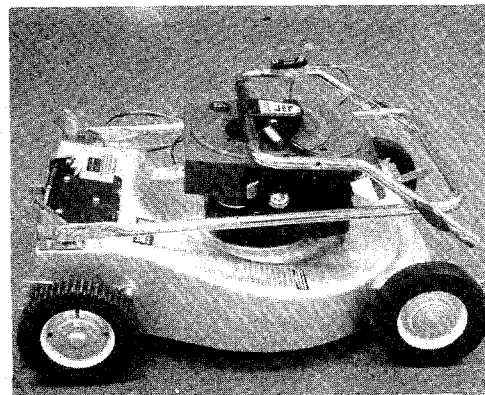


Figure 18

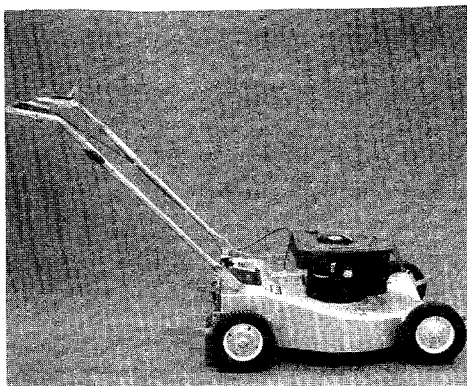


Figure 16

Maintenance

The following maintenance and adjustment instructions are primarily for the mower. For the engine refer to the Engine Operating and Maintenance section of this handbook.

Wheel Lubrication

Each front wheel has two ball bearings and each rear wheel has a sintered iron sleeve bearing that requires periodic lubrication. Place a few drops of light oil on each bearing at the start of each mowing season.

Cutting Blade

The blade may be removed for sharpening or replacement as follows:

- 1 Remove the large bolt and lockwasher holding the blade and adapter to the engine crankshaft.
- 2 Remove the blade and adapter from the crankshaft.
- 3 Be careful not to lose the key on the crankshaft.
- 4 Remove the two smaller bolts, lockwashers and nuts holding the blade to the adapter (See figure 19.)

When sharpening the blade, follow the original angle of grind as a guide. It is extremely important that each cutting edge receives an equal amount of grinding to prevent an unbalanced blade. An unbalanced blade will cause excessive vibration when rotating at high speeds and may cause damage to the mower.

The blade can be tested for balance by balancing it on a screwdriver. Remove metal from the heavy side until it balances evenly. (See figure 20.)

Note: When replacing the blade, be sure the side of the blade marked "Bottom" or having the part number is facing the ground when the mower is in the operating position.

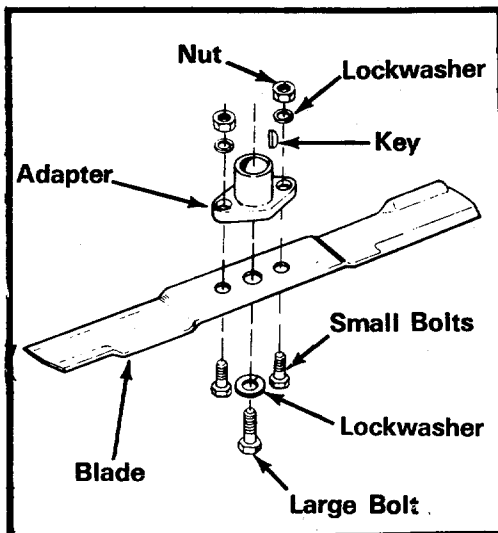


Figure 19

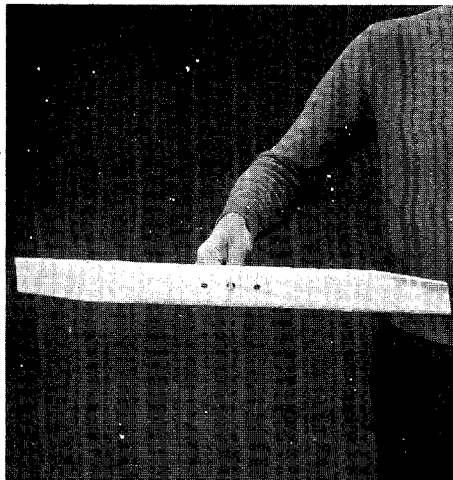


Figure 20

Chain Lubrication

If the rotary mower is operated in a sandy area the chain should not be lubricated. Excessive oil on a chain will collect dirt and cause excessive wear on the chain and sprockets.

To lubricate the chain, remove the master link, soak the chain in kerosene or a solvent, let it air dry and wipe the chain with a rag saturated

with SAE 30 oil. Reassemble the chain to the sprockets. Closed end of the master link clip should face in direction of chain travel.

Belt Removal

- 1 Remove the spark plug wire and ground it.
- 2 Remove the three screws holding the belt guard (and idler assembly). (See figure 21.)
- 3 Remove the belt from the idler as you lift off the belt guard.
- 4 Place the mower in an upright position. (See figure 22.)

Warning: Make sure that the mower is secure and can not tip over.



Figure 21

- 5 Take out the three screws and carriage bolt holding the shield in place. (See figure 22.)
- 6 Remove the nut and slide the pulley bolt out. (See figure 23.)

Note: Be sure the spacers and washers are installed in the same order when reassembling the pulley.

- 8 Remove the belt. (See figure 24.)
- 9 Install the new belt as shown in figure 25 with the idler under the belt.
- 10 Assemble the belt cover, lower pan and blade to the mower.

Maintenance

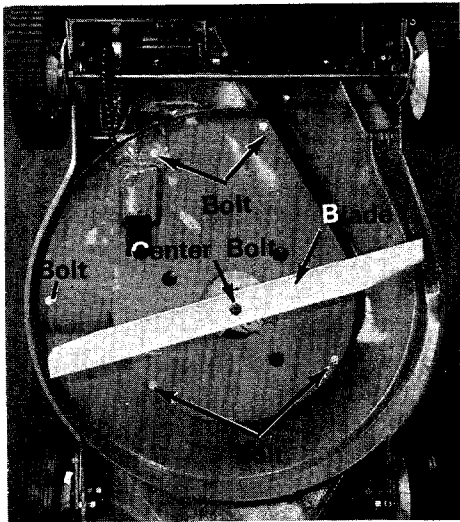


Figure 22

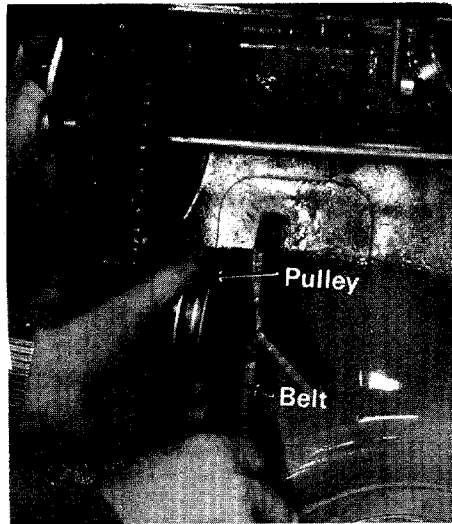


Figure 24

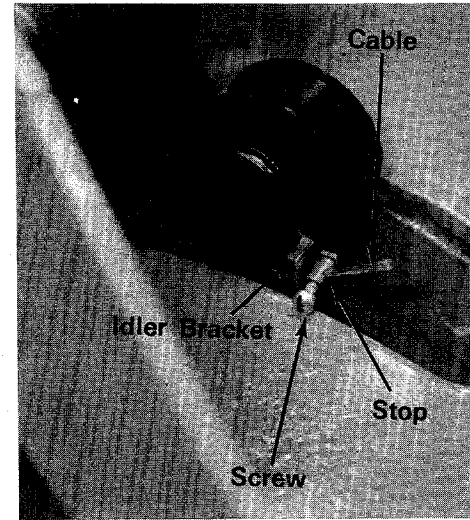


Figure 26

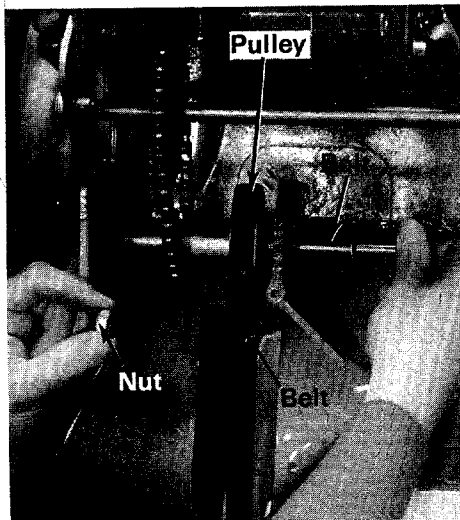


Figure 23

Clutch Control Adjustment

- 1 Make sure the clutch control is completely disengaged. (See figure 12.)
- 2 Loosen the screw in the stop. (See figure 26.)
- 3 Pull the end of the cable as you slide the stop towards the idler bracket.
- 4 Tighten the screw in the stop.

Lever Adjustment

The clutch lever can be adjusted so it is closer to the handle when squeezed. This adjustment is for the comfort of the operator only. Tighten the nut to move the lever towards the mower handle. Loosen the nut to move the lever away. (See figure 27.)

Note: It may be necessary to move the stop closer to the end of the cable as described in the Clutch Control Adjustment paragraph.

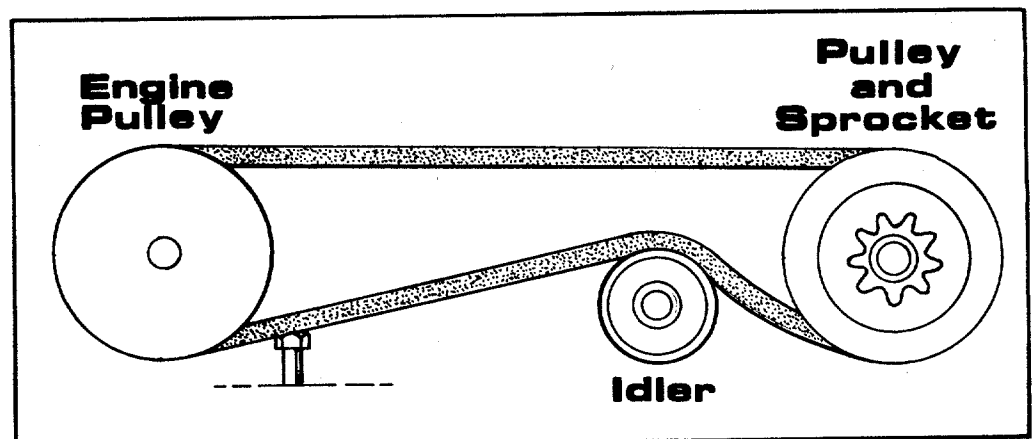


Figure 25

Maintenance

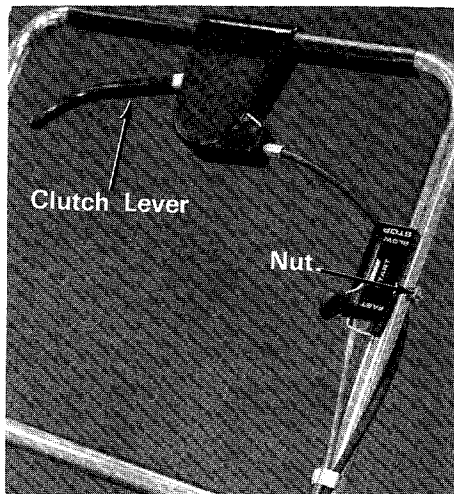


Figure 27

Off-season Storage

If the machine is to be inoperative for a period longer than 30 days, the following procedures are recommended:

- 1 Working outdoors, drain all fuel from the fuel tank. Use a clean dry cloth to absorb the small amount of fuel remaining in the tank, then run the engine until all fuel in the carburetor is exhausted.



Do not drain fuel while smoking, or if near an open fire.

- 2 Drain all the oil from the crankcase (this should be done after the engine has been operated and is still warm) and refill the crankcase with clean new oil.

- 3 Disconnect the spark plug wire and remove the spark plug from the cylinder. Pour about 2 or 3 tablespoons of engine oil into the cylinder, and then turn the engine over several times to spread out the oil. Replace the spark plug, but do not connect the wire.
- 4 Clean the engine and the entire mower thoroughly.
- 5 Lubricate all lubrication points indicated in figures 10 to 13, then wipe the entire machine with an oiled rag in order to protect the surfaces.

NOTE

The manufacturer DOES NOT recommend the use of any accessory on this Rotary Mower other than those manufactured by MTD Products Inc.

WARNING

DO NOT operate the mower with the chute doors open unless the complete grass catcher is properly mounted on the mower.

NOTE:

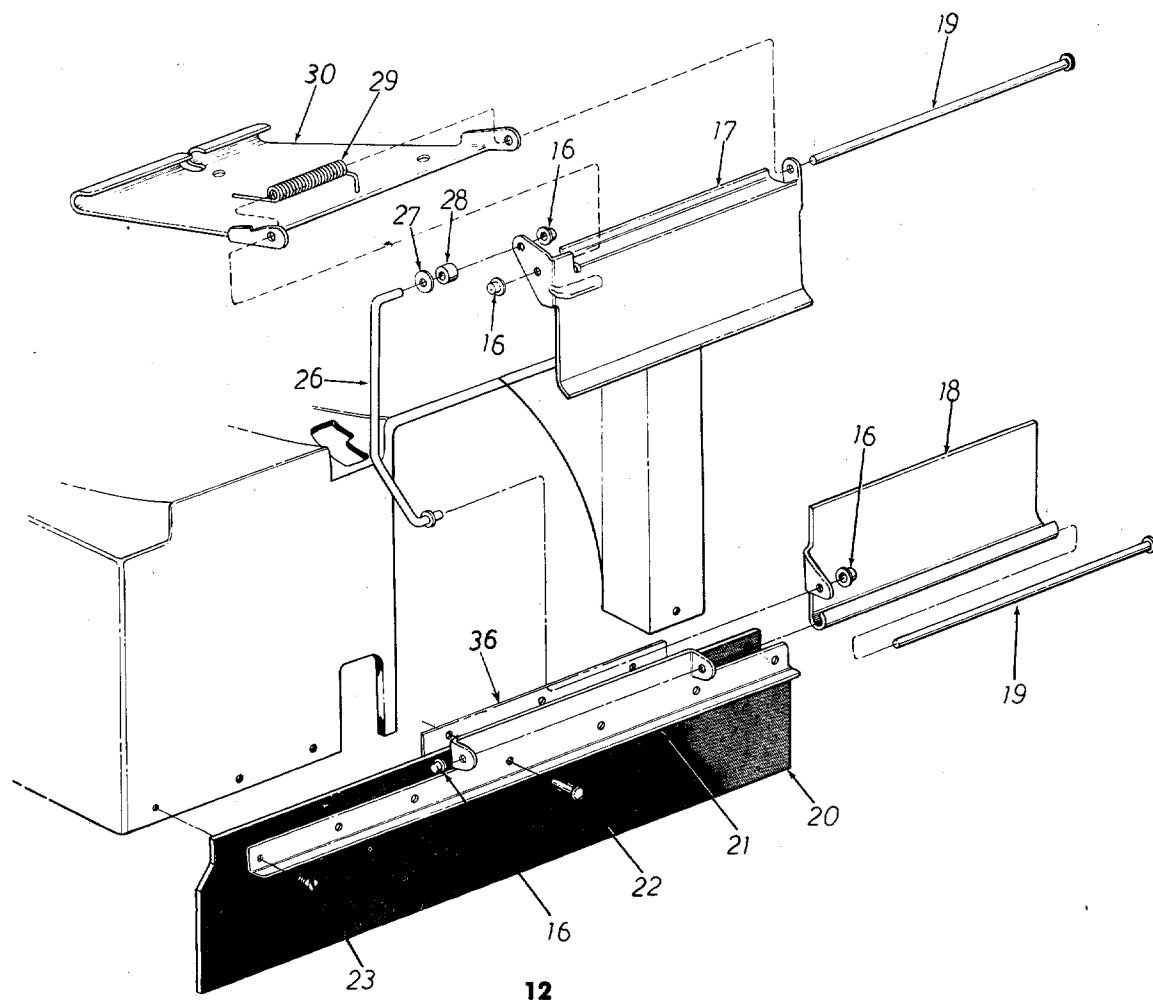
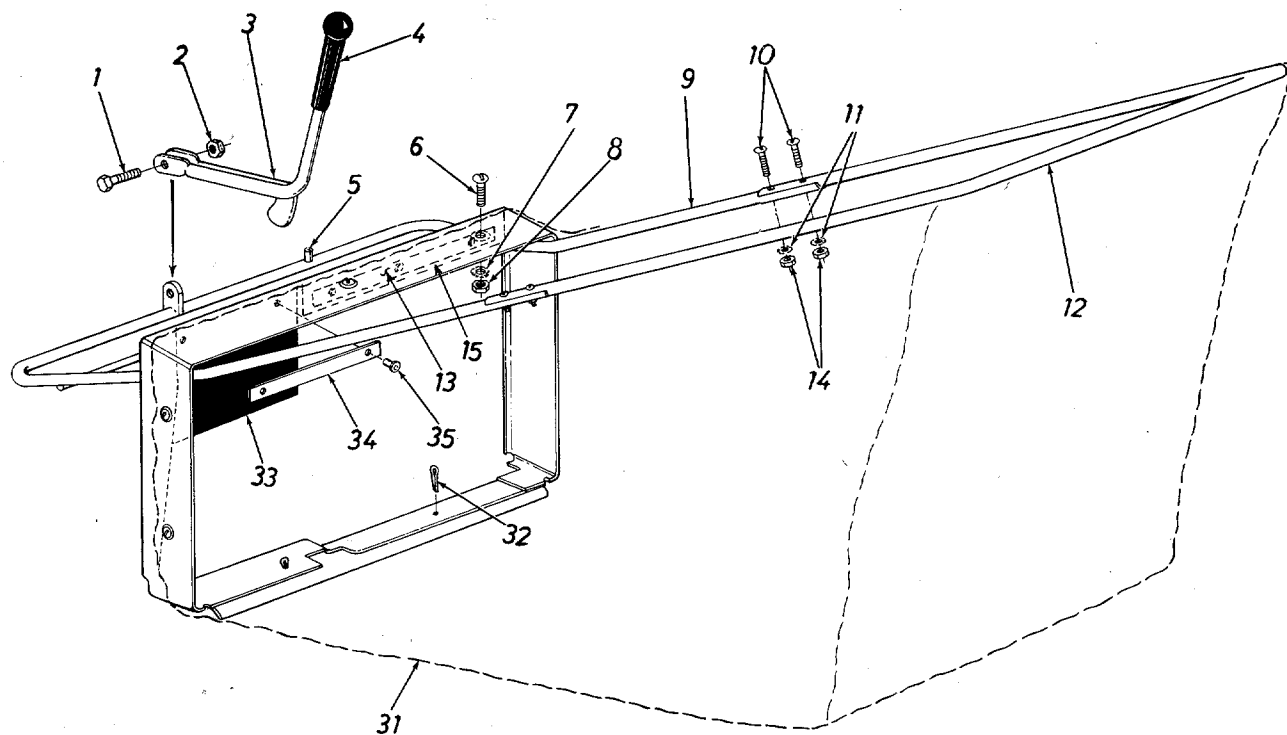
Under normal usage bag material is subject to wear and should be checked periodically. Be sure any replacement bag complies with the mower manufacturer's recommendations.

For replacement bags, use only factory authorized replacement bag No. 764-0130.

★ IMPORTANT

After striking a foreign object, stop the engine, remove wire from spark plug. Thoroughly inspect the mower for any damage, and repair the damage before restarting and operating the mower.

125-350A



PARTS LIST FOR MODEL 125-350A

| REF. NO. | PART NO. | COLOR CODE | DESCRIPTION | NEW PART | REF. NO. | PART NO. | COLOR CODE | DESCRIPTION | NEW PART |
|----------|----------|------------|--|----------|----------|----------|------------|-----------------------------------|----------|
| 1 | 710-0117 | | Hex Scr. 5/16-24 x 1.00" Lg.* | | 18 | 12194 | | Chute Door—Lower Half | |
| 2 | 712-0237 | | Hex Center L-Nut 5/16-24 Thd. | | 19 | 738-0253 | | Hinge Rod | |
| 3 | 12393 | | Cam Lever Ass'y. | | 20 | 735-0169 | | Rear Protective Flap | |
| 4 | 720-0143 | | Grip | | 21 | 12305 | | Rear Safety Shield Plate | |
| 5 | 715-0247 | | Spring Pin Spiral | | 22 | 728-0128 | | Rivet* | |
| 6 | 710-0192 | | Truss Mach. Scr. #10-24 x .38" Lg. | | 23 | 710-0436 | | Hex B-Tapp Scr. #10Z x .62" Lg.* | |
| 7 | 736-0147 | | Ext. L-Wash. #10 Scr.* | | 26 | 747-0141 | | Connecting Rod | |
| 8 | 712-0121 | | Hex Nut #10-24 Thd.* | | 27 | 736-0159 | | Fl.-Wash. .340 I.D. x .87 O.D. | |
| 9 | 12579 | | Catcher Frame Ass'y. Lower Half | N | 28 | 750-0258 | | Roller Spacer | |
| 10 | 710-0467 | | Rd. Hd. Mach. Scr. #10-24 x 1.00" Lg.* | | 29 | 732-0295 | | Torsion Spring | |
| 11 | 736-0147 | | Ext. L-Wash. #10 Scr.* | | 30 | 12192 | | Grass Catcher Adapter | |
| 12 | 749-0178 | | Frame—Rear Half | N | 31 | 764-0130 | | Bag | |
| 13 | 12316 | | Reinforcement Bar | | 32 | 714-0115 | | Cotter Pin 1/8" Dia. x 1.00" Lg.* | |
| 14 | 712-0121 | | Hex Nut #10-24 Thd.* | | 33 | 735-0168 | | Grass Catcher Flap | |
| 15 | 735-0183 | | Grass Catcher Flap | N | 34 | 12185 | | Reinforcement Bar | |
| 16 | 726-0135 | | Push Nut 5/16" Rod | | 35 | 728-0128 | | Rivet | |
| 17 | 12395 | | Chute Door—Upper Half | | 36 | 12316 | | Reinforcement Bar | |

190-010-000
NLA

*For faster service obtain standard nuts and bolts locally. If these items cannot be obtained locally, order by part number and size as shown on the parts list.

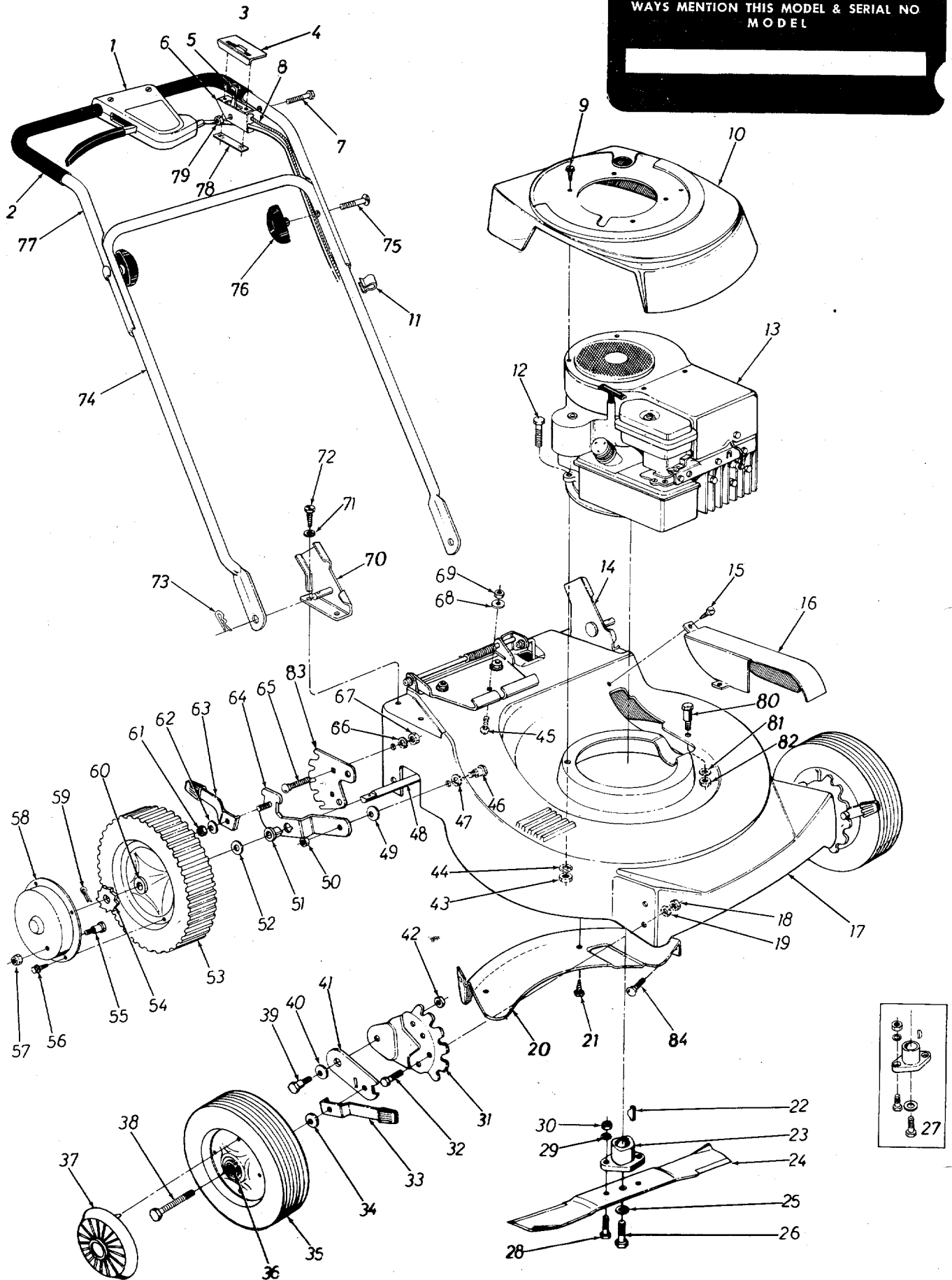
(462—Red Flake) When ordering parts, if color or finish is important, use the appropriate color code shown at left. (e.g. Red Flake Finish 12609 (462).)

The engine is not under warranty by the mower manufacturer. If repairs or service is needed on the engine, please contact your nearest authorized engine service outlet. Check the "Yellow Pages" of your telephone book under "Engines—Gasoline."



125-350A

IF YOU WRITE TO US ABOUT THIS ARTICLE
OR IF YOU ORDER REPLACEMENT PARTS AL-
WAYS MENTION THIS MODEL & SERIAL NO
MODEL



PARTS LIST FOR MODEL 125-350A

| REF. NO. | PART NO. | COLOR CODE | DESCRIPTION | NEW PART | REF. NO. | PART NO. | COLOR CODE | DESCRIPTION | NEW PART |
|----------|-----------|------------|--|----------|----------|-----------|------------|---|----------|
| 1 | 12608 | | Clutch Control Ass'y. Comp. | N | 42 | 712-0375 | | Hex Cent. L-Nut 3/8-16 Thd. | |
| 2 | 718-0143 | | Grip | | 43 | 712-0267 | | Hex Nut 5/16-18 Thd.* | |
| 3 | 746-0256 | | Throttle Control Ass'y. Comp. | N | 44 | 736-0119 | | L-Wash. 5/16" Scr.* | |
| 4 | 731-0180 | | Plastic Label | | 45 | 710-0134 | | Car. Bolt 1/4-20 x .62" Lg. | |
| 5 | 731-0189 | | Control Knob | | 46 | 738-0143 | | Shld. Scr. .498 Dia. x .340 | |
| 6 | 746-0179 | | Throttle Control Ass'y. | | 47 | 736-0232 | | Wave Wash. .530 I.D. x .78 O.D. | |
| 7 | 710-0606 | | Hex Scr. 1/4-20 x 1.50" Lg.* | | | | | | |
| 8 | 746-0255 | | Conduit and Wire | N | 48 | 12313 | | Rear Shaft Ass'y. | |
| 9 | 710-0227 | | Slot Hex Hd. Self Extr. Scr. #8- x 138" Lg.* | | 49 | 736-0219 | | Belleville Wash. .400 I.D. x 1.13 O.D. | |
| 10 | 731-0303 | | Engine Shroud | | 50 | 712-0181 | | Hex Top L-Nut 3/8-16 Thd. | |
| 11 | 726-0145 | | Cable Clip Twin Type | | 51 | 748-0142 | | Flange Bearing | |
| 12 | 710-0442 | | Hex Scr. 5/16-18 x 1.50" Lg.* | | 52 | 736-0192 | | Fl.-Wash. .531 I.D. x .93 O.D. | |
| 13 | — | | Engine | | 53 | 734-0538 | | Wheel Ass'y. Comp.—Rear | |
| 14 | | | Handle Mount Brkt. Ass'y.—L.H. | N | 54 | 748-0187 | | Ratchet | |
| 15 | 710-0599 | | Hex Wash. S-Tapp Scr. 1/4-20 x .50" Lg. | N | 55 | 738-0137 | | Shld. Scr. .342 Dia. x .268 | |
| 16 | 12308-462 | | Belt Cover Ass'y. | | 56 | 710-0407 | | Slot Hex Hd. Self Extr. Scr. #8-32 x .50" Lg. | |
| 17 | 12609 | | 22" Deck Ass'y. | N | 57 | 712-0219 | | Elastic Stop Nut 1/4-20 Thd. | |
| 18 | 712-0798 | | Hex Nut 3/8-16 Thd.* | | 58 | 10647-462 | | Hub Cap—Rear | |
| 19 | 736-0169 | | L-Wash. 3/8" Scr.* | | 59 | 714-0115 | | Cotter Pin 1/8" Dia. x 1.00" Lg.* | |
| 20 | 12607 | | Cover Plate | N | 60 | 748-0125 | | Sleeve Bearing .503 I.D. | |
| 21 | 710-0618 | | FL-Hd. Phil. Scr. 1/4-20 x .62" Lg. | | 61 | 712-0798 | | Hex Nut 3/8-16 Thd.* | |
| 22 | 714-0365 | | #6 Hi-Pro-Key 5/32 x 5/8" Dia. | | 62 | 736-0105 | | Belleville Wash. .400 I.D. x .88 O.D. | |
| 23 | 10769 | | Blade Adapter Kit | | 63 | 10530 | | Spring Lever Ass'y. with Knob | |
| 24 | 742-0125 | | 22" Blade | | 64 | 10639 | | Pivot Brkt. Ass'y.—R.H. | |
| 25 | 736-0217 | | L-Wash. 3/8" Scr. Heavy Duty | | | 10638 | | Pivot Brkt. Ass'y.—L.H. | |
| 26 | 710-0459 | | Hex Scr. 3/8-24 x 1.50" Lg. H.T | | 65 | 710-0260 | | Car. Bolt 5/16-18 x .62" Lg. | |
| 27 | 10769 | | Blade Adapter Kit | | 66 | 736-0119 | | L-Wash. 5/16" Scr.* | |
| 28 | 710-0117 | | Hex Scr. 5/16-24 x 1.00" Lg. H.T. | | 67 | 712-0267 | | Hex Nut 5/16-18 Thd. | |
| 29 | 736-0119 | | L-Wash. 5/16" Scr.* | | 68 | 736-0329 | | L-Wash. 1/4" Screw* | |
| 30 | 712-0123 | | Hex Nut 5/16-24 Thd.* | | 69 | 712-0287 | | Hex Cent. 1/4-20 Thd.* | |
| 31 | 12321 | | Ht. Adj. Ass'y. Comp.—L.H. | | 70 | 12576 | | Handle Mount Brkt. Ass'y.—R.H. | N |
| | 12322 | | Ht. Adj. Ass'y. Comp.—R.H. | | 71 | 736-0329 | | L-Wash. 1/4" Scr.* | |
| | 12323 | | Index Plate | | 72 | 710-0588 | | Hex.Hd. Self Tapp Scr. 1/4-20 x 1.00" Lg. | |
| 32 | 710-0216 | | Hex Scr. 3/8-16 x .75" Lg.* | | 73 | 714-0104 | | Intern. Cotter Pin 5/16" Dia. | |
| 33 | 10530 | | Spring Lever Ass'y. with Knob | | 74 | 749-0179 | | Lower Handle | N |
| 34 | 736-0105 | | Belleville Wash. .400 I.D. x .88 O.D. | | 75 | 710-0405 | | Curved Car. Bolt 5/16-18 x 1.75" Lg. | |
| 35 | 734-0643 | | Front Wheel Ass'y. Comp. | | 76 | 09966 | | Hand Knob | |
| 36 | 741-0178 | | Ball Bearing (2 Req'd.) | | 77 | 749-0181 | | Upper Handle | |
| 37 | 731-0124 | | Hub Cap | | 78 | 726-0134 | | Speed Nut—Twin Type | |
| 38 | 710-0427 | | Hex Scr. 3/8-16 x 2.00" Lg.* | | 79 | 712-0107 | | Hex Cent. L-Nut 1/4-20 Thd. | |
| 39 | 738-0269 | | Shoulder Scr. | | 80 | 738-0138 | | Shoulder Scr. .437 Dia. x .470 | |
| 40 | 736-0255 | | Belleville Wash. .500 I.D. x 1.14 O.D. | | 81 | 736-0119 | | L-Wash. 5/16-18" Scr.* | |
| 41 | 10619 | | Pivot Bar | | 82 | 712-0267 | | Hex Nut 5/16-18 Thd.* | |
| | | | | | 83 | 10643 | | Index Plate | |
| | | | | | 84 | 710-0258 | | Hex Scr. 1/4-20 x .62" Lg.* | |

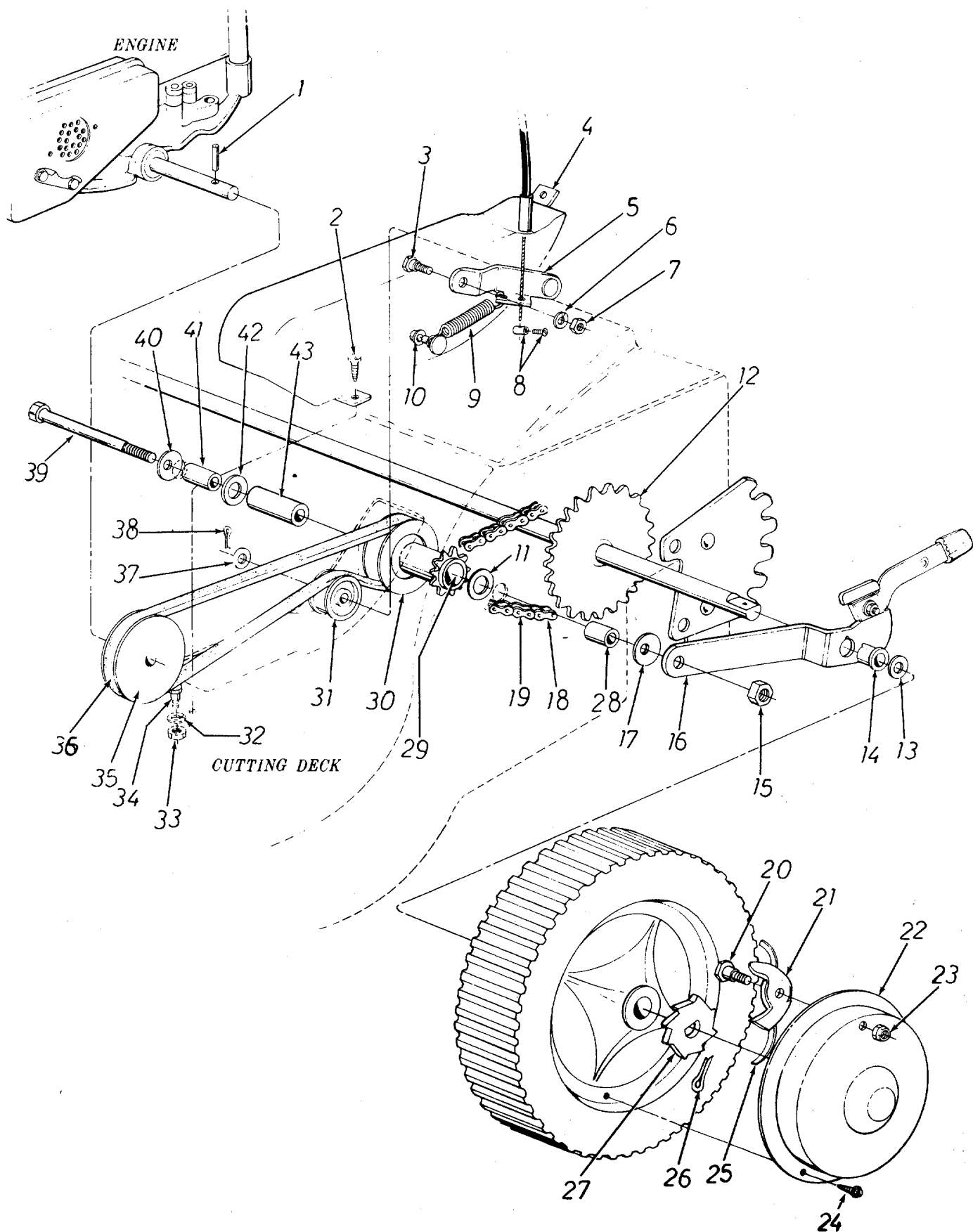
*For faster service obtain standard nuts and bolts locally. If these items cannot be obtained locally, order by part number and size as shown on the parts list.

(462—Red Flake) When ordering parts, if color or finish is important, use the appropriate color code shown at left. (e.g. Red Flake Finish 12609 (462).)

The engine is not under warranty by the mower manufacturer. If repairs or service is needed on the engine, please contact your nearest authorized engine service outlet. Check the "Yellow Pages" of your telephone book under "Engines—Gasoline."

Find It Fast
In The
"Yellow Pages"

125-350A



PARTS LIST FOR MODEL 125-350A

| REF. NO. | PART NO. | COLOR CODE | DESCRIPTION | NEW PART | REF. NO. | PART NO. | COLOR CODE | DESCRIPTION | NEW PART |
|----------|-----------|------------|---|----------|----------|----------|------------|---|----------|
| 1 | 715-0105 | | Spring Pin Roll 3/16" Dia. x 1.50" Lg. | | 24 | 710-0407 | | Slot Hex Hd. Self Extr. Scr. #8-32 x .50" Lg. | |
| 2 | 710-0599 | | Hex Wash. S-Tapp Scr. 1/4-20 x .50" Lg. | | 25 | 10622 | | Nylon Spring | |
| 3 | 738-0255 | | Shoulder Scr. .375 Dia. x .172 | | 26 | 714-0115 | | Cotter Pin 1/8" Dia. x 1.00" Lg.* | |
| 4 | 12308-462 | | Belt Cover Ass'y. | | 27 | 748-0187 | | Ratchet | |
| 5 | 12605 | | Engagement Brkt. Ass'y. | N | 28 | 750-0262 | | Spacer .50 O.D. x .38 I.D. x 1.42" Lg. | |
| 6 | 736-0329 | | L-Wash. 1/4" Scr.* | | 29 | 741-0181 | | Sleeve Bearing .62 I.D. x .75 O.D. x .94 Lg. | |
| 7 | 712-0287 | | Hex Nut 1/4-20 Thd.* | | 30 | 756-0191 | | Pulley with 9 Tooth Sprocket Ass'y. | |
| 8 | 746-0247 | | Cable Stop | | 31 | 756-0192 | | Plastic Flat Idler | |
| 9 | 732-0250 | | Extension Spring | | 32 | 736-0119 | | L-Wash. 5/16" Scr.* | |
| 10 | 726-0111 | | Push Cap .188" | | 33 | 712-0267 | | Hex Nut 5/16-18 Thd.* | |
| 11 | 736-0300 | | Fl.-Wash. .385 I.D. x .87 O.D. | | 34 | 738-0138 | | Shld. Scr. .437 Dia. x .470 | |
| 12 | 12313 | | Rear Shaft Ass'y. | | 35 | 756-0115 | | Engine Pulley | |
| 13 | 736-0192 | | Fl.-Wash. .531 I.D. x .93 O.D. | | 36 | 754-0935 | | V-Belt 1/2 x 31" Lg. | |
| 14 | 748-0142 | | Flange Bearing | | 37 | 736-0160 | | Fl.-Wash. .531 I.D. x .930 O.D. | |
| 15 | 712-0181 | | Hex Top L-Nut 3/8-16 Thd. | | 38 | 714-0115 | | Cotter Pin 1/8" Dia. x 1.00" Lg.* | |
| 16 | 10638 | | Pivot Brkt. Ass'y.—L.H. | | 39 | 710-0615 | | Hex Scr. 3/8-16 x 5.00" Lg.* | |
| | 10639 | | Pivot Brkt. Ass'y.—R.H. | | 40 | 736-0219 | | Belleville Wash. .400 I.D. x 1.13 O.D. | |
| 17 | 736-0219 | | Belleville Wash. .400 I.D. x 1.13 O.D. | | 41 | 750-0263 | | Spacer .50 O.D. x .38 I.D. x .90" Lg. | |
| 18 | 713-0144 | | Roller Chain #48 x 31 Links | | 42 | 736-0300 | | Fl.-Wash. .385 I.D. x .87 O.D. | |
| 19 | 713-0122 | | Master Link #48 | | 43 | 750-0261 | | Spacer .62 O.D. x .38 I.D. x 2.00" Lg. | |
| 20 | 738-0137 | | Shld. Scr. .342 Dia. x .268 | | | | | | |
| 21 | 748-0188 | | Pawl | | | | | | |
| 22 | 10647-462 | | Hub Cap—Rear | | | | | | |
| 23 | 712-0219 | | Elastic Stop Nut 1/4-20 Thd. | | | | | | |

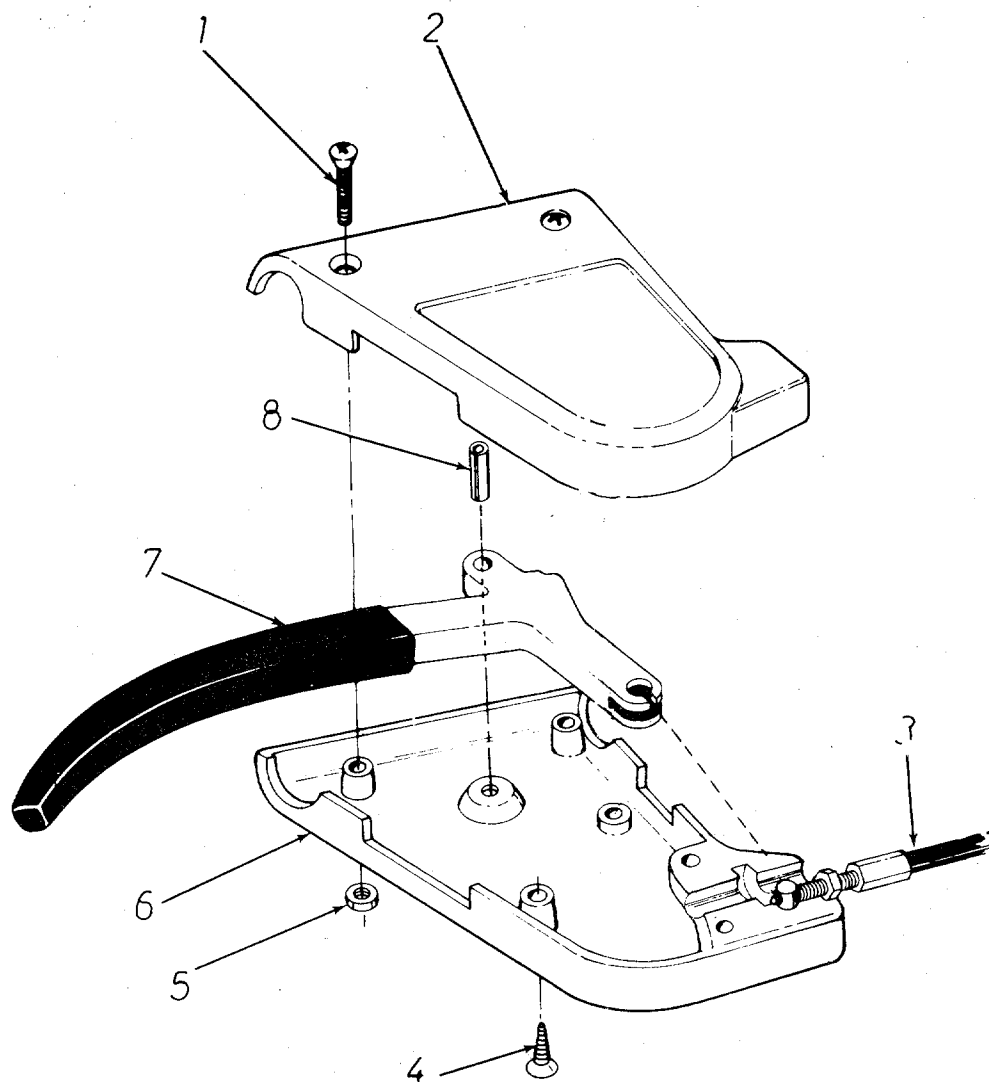
*For faster service obtain standard nuts and bolts locally. If these items cannot be obtained locally, order by part number and size as shown on the parts list.

(462—Red Flake)

When ordering parts, if color or finish is important, use the appropriate color code shown at left. (e.g. Red Flake Finish—12609(462).)

The engine is not under warranty by the mower manufacturer. If repairs or service is needed on the engine, please contact your nearest authorized engine service outlet. Check the "Yellow Pages" of your telephone book under "Engines—Gasoline."





PARTS LIST FOR CONTROL LEVER ASSEMBLY BREAKDOWN

| REF. NO. | PART NO. | COLOR CODE | DESCRIPTION | NEW PART |
|----------|----------|------------|--|----------|
| 1 | 710-0534 | | Phillips Drive Oval Hd. Scr. #8-32 x 1.25" Lg. | |
| 2 | 731-0331 | | Front Control Cover | N |
| 3 | 746-0254 | | Control Cable 58" Lg. w/6" Ext. | N |
| 4 | 710-0535 | | Slotted Oval Self Tap Scr. #10 x .87" Lg. | |
| 5 | 712-0223 | | Hex Nut 8-32 Thd.* | |
| 6 | 731-0332 | | Rear Control Cover | N |
| 7 | 719-0193 | | Lever Clutch Control | |
| 8 | 715-0248 | | Spring Pin Roll 3/16" Dia. x .75" Lg.* | |

(462—Red Flake)

*For faster service obtain standard nuts and bolts locally. If these items cannot be obtained locally, order by part number and size as shown on the parts list.

When ordering parts, if color or finish is important use the appropriate color code shown above (e.g. Red Flake Finish—12609 (462).)

The engine is not under warranty by the mower manufacturer. If repairs or service is needed on the engine, please contact your nearest authorized engine service outlet. Check the "Yellow Pages" of your telephone book under "Engines—Gasoline."



PARTS INFORMATION

DEFECTIVE OR MISSING PARTS must be reported to the factory immediately. Such claims must include your model number and date of purchase.

POWER EQUIPMENT PARTS AND SERVICE

Parts and service for all MTD manufactured power equipment are available through the authorized service firms listed below. All orders should specify the model number of your unit, parts numbers, description of parts and the quantity of each part required.

BRIGGS & STRATTON, TECUMSEH AND PEERLESS PARTS AND SERVICE

Briggs & Stratton, Tecumseh and Peerless parts and service should be handled by your nearest authorized engine service firm. Check the yellow pages of your telephone directory under the listing *Engines — Gasoline*, Briggs & Stratton or Tecumseh Lauson — Power Products.

A 1 Engine & Mower Co.
327 East 9th Street
Salt Lake City, Utah 84102

Auto Electric & Carburetor Co.
2525 4th Avenue, S.
P. O. Box 1948
Birmingham, Alabama 35233

Automotive Equipment Service Co.
3117 Holmes Street
Kansas City, Missouri 64109

Bailey's Rebuild Inc.
1325 E. Madison Street
Seattle Washington 98102

Bleckie, Inc.
7900 Lorain Avenue
Cleveland, Ohio 44102

Brown Equipment Distributor Inc.
110 Beech Street
Corydon, Indiana 47112

Bullard Supply
2409 Commerce Street
Houston, Texas 77003

Catto & Putty, Inc.
P. O. Box 2408
510 Soledad Street
San Antonio, Texas 78205

Center Supply Company
6867 New Hampshire Avenue
Takoma Park, Maryland 20012

Dixie Sales Company
P. O. Box 1408
327 Battleground Avenue
Greensboro, North Carolina 27402

East Point Cycle & Key Shop
1617 Whiteway
East Point, Georgia 30044

Gamble Distributors
West End Avenue
Carthage, New York 13619

Garden Equipment Co., Inc.
6600 Cherry Avenue
Long Beach, California 90805

Gardenville Supply, Inc.
Pipersville, Pennsylvania 18947

Henry W. O'Neil & Assoc., Inc.
410 North Goodman Street
Rochester, New York 14609

Henzler, Inc.
2015 Lemay Ferry Road
St. Louis, Missouri 63125

Kenton Supply
8216 North Denver Avenue
Portland, Oregon 97217

Kimber's Inc.
115 W. Geddes St.
Syracuse, New York 13204

Marr Brothers
423 E. Jefferson
Dallas, Texas 75203

McClure Lawn & Garden Supply
1114 Lexington Avenue
Mansfield, Ohio 44907

Memphis Cycle & Supply Co.
421 Monroe Avenue
Memphis Tennessee 38103

Morton B. Collins Co.
300 Birnie Avenue
Springfield, Massachusetts 01107

Moz-All of Florida, Inc.
365 Greco Avenue
Coral Gables, Florida 33146

National Central
687 Seville Rd.
Wadsworth, Ohio 44281

Parts & Sales Inc.
2101 Industrial Pkwy.
Elkhart, Indiana 46514

Power Equipment Distributor
36463 So. Gratiot Avenue
Mt. Clemens, Michigan 48043

Power Lawn & Garden Equip. Co.
2551-2571 J. F. Kennedy Road
Dubuque, Iowa 52001

Radco Distributors
2403 Market Street
P. O. Box 3216
Jacksonville, Florida 32206

Raub Supply Company
James & Mulberry Sts.
Lancaster, Pennsylvania 17604

Richmond Battery & Ignition
P. O. Box 25369 — 957 Myers St.
Richmond, Virginia 23260

R. P. W., Inc.
623 S. 16th Street
Omaha, Nebraska 68102

Smith Hardware Company
515 N. George Street
Goldsboro, North Carolina 27530

South Denver Lawn Equip. Co.
527 West Evans
Denver, Colorado 80223

Suhren Engine
8330 Earhart Blvd.
New Orleans, Louisiana 70118

Sutton's Lawn Mower Shop
Route 4, Box 343
North Little Rock, Arkansas 72117

Warner Equipment
7520 Lyndale Avenue, So.
Minneapolis, Minnesota 55423

Woodson Sales & Service
1702 North Sylvania
Ft. Worth, Texas 76111

WARRANTY PARTS AND SERVICE POLICY

The purpose of warranty is to protect the customer from defects in workmanship and materials, defects which are NOT detected at the time of manufacture. It does not provide for the unlimited and unrestricted replacement of parts. Use and maintenance are the responsibility of the customer. The manufacturer cannot assume responsibility for conditions over which it has no control. Simply put, if it's the manufacturer's fault, it's the manufacturer's responsibility; if it's the customer's fault, it's the customer's responsibility.

CLAIMS AGAINST THE MANUFACTURER'S WARRANTY INCLUDES

1. Replacement of Missing Parts on new equipment.
2. Replacement of Defective Parts within the warranty period.
3. Repair of Defects within the warranty period.

All claims MUST be substantiated with the following information:

1. Model Number of unit involved.
2. Date unit was purchased or first put into service.
3. Date of failure.
4. Nature of failure.