

Owner's Operating Service Instruction Manual

10¢

Model Nos.
125-290A
125-295A

- ASSEMBLY
- OPERATION
- REPAIR PARTS

21" SELF-PROPELLED ROTARY MOWERS

WARRANTY

For one year from date of purchase, MTD Products Inc will replace for the original purchaser, free of charge, F.O.B. factory or authorized service firm, any part or parts found to be defective in material or workmanship. All transportation charges on parts submitted for replacement under this warranty must be paid by the purchaser. This warranty does not include replacement of parts which become inoperative through misuse, excessive use, accident, neglect, improper maintenance or alterations by unauthorized persons. This warranty does not include the engine, motor, battery, battery charger or any component parts thereof. For service on these units, refer to the applicable manufacturer's warranty.

The above warranty will apply only to the original owner and will be effective only if the warranty card has been properly processed. It will not apply where the unit has been used commercially.

Warranty service is available through your local authorized service dealer or distributor. **UNDER NO CIRCUMSTANCES WILL THE RETURN OF A COMPLETE UNIT BE ACCEPTED BY THE FACTORY UNLESS PRIOR WRITTEN PERMISSION HAS BEEN EXTENDED.**

I M P O R T A N T

SAFE OPERATION PRACTICES FOR WALK-BEHIND MOWERS

TRAINING

1. Read the Operating and Service Instruction Manual carefully. Be thoroughly familiar with the controls and the proper use of the equipment.
2. Never allow children to operate a power mower.
3. Keep the area of operation clear of all persons, particularly small children and pets.

PREPARATION

1. Thoroughly inspect the area where the equipment is to be used and remove all stones, sticks, wire, bones and other foreign objects.
2. Do not operate equipment when barefoot or wearing open sandals. Always wear substantial footwear.
3. Check the fuel before starting the engine. Do not fill the gasoline tank indoors, when the engine is running, or while the engine is still hot. Wipe off any spilled gasoline before starting the engine.
4. Disengage the self-propelled mechanism or drive clutch on units so equipped before starting the engine.
5. Never attempt to make a wheel adjustment while the engine is running.
6. Mow only in daylight or in good artificial light.
7. Never operate the equipment in wet grass. Always be sure of your footing; keep a firm hold on the handle and walk, never run.

OPERATION

1. Do not change the engine governor settings or overspeed the engine.
2. Do not put hands or feet near or under rotating parts. Keep clear of the discharge opening at all times.
3. Stop the blade(s) when crossing gravel drive, walks or roads.
4. After striking a foreign object, stop the engine, remove the wire from the spark plug, thoroughly inspect the mower for any damage, and repair the damage before restarting and operating the mower.

5. If the equipment should start to vibrate abnormally, stop the engine and check immediately for the cause. Vibration is generally a warning of trouble.
6. Stop the engine whenever you leave the equipment, before cleaning the mower housing, and when making any repairs or inspections.
7. When cleaning, repairing or inspecting, make certain the blade and all moving parts have stopped. Disconnect the spark plug wire, and keep the wire away from the plug to prevent accidental starting.
8. Do not run the engine indoors.
9. Shut the engine off and wait until the blade comes to a complete stop before removing the grass catcher or unclogging chute.
10. Mow across the face of slopes, never up-and-down. Exercise extreme caution when changing direction on slopes. Do not mow excessively steep slopes.
11. Always disconnect electric mowers (line operated) before cleaning, repairing or adjusting.
12. Never operate mower without proper guards, plates or other safety protective devices in place.
13. Keep washout ports and other mower-housing service openings closed when mowing.

MAINTENANCE AND STORAGE

1. Check the blade and engine mounting bolts at frequent intervals for proper tightness.
2. Keep all nuts, bolts, and screws tight to be sure the equipment is in safe working condition.
3. Never store the equipment with gasoline in the tank inside of a building where fumes may reach an open flame or spark. Allow the engine to cool before storing in any enclosure.
4. To reduce fire hazard, keep the engine free of grass, leaves, or excessive grease.
5. Check the grass catcher bag frequently for wear or deterioration. Replace with new bag for safety protection.

ASSEMBLY INSTRUCTIONS

HANDLE ASSEMBLY MODEL 125-290A

1. Remove the loose hardware from the assembly pack. You will need a screwdriver and a 5/16" wrench, either a socket or an open end wrench.
2. Assemble the lower handle to the handle brackets as shown in figure 2.
3. Secure the handle with cotter hairpins on both sides. See figure 2.
4. Place the handle panel over the lower handle and fasten with the handle panel screw using a 5/16" wrench. See figure 3.
5. Place the upper handle over the lower handle and line up the holes as shown in figure 4.
6. Insert the curved head bolt from the inside and tighten the knob by hand. See figure 4.
7. Place the throttle control in the handle panel and assemble it with the two throttle screws using a screwdriver. See figure 5.
8. Use the cable clip to fasten the throttle control wire to the lower handle.
9. Check ALL nuts and bolts for correct tightness.

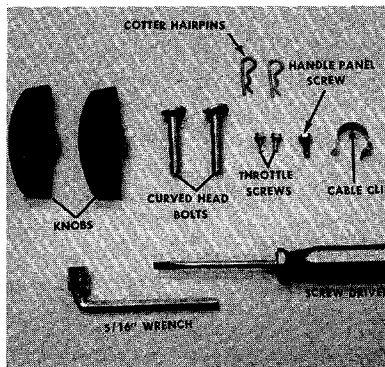


FIGURE 1. LOOSE HARDWARE AND TOOLS

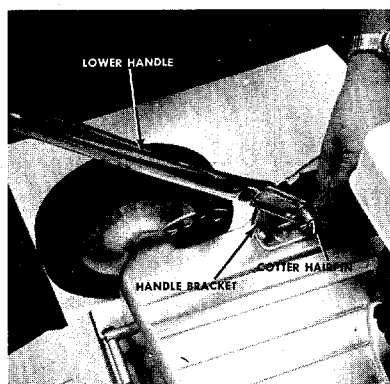


FIGURE 2. LOWER HANDLE ASSEMBLY

NOTE

It may be necessary to spread the ends of the lower handle outward slightly to assure a snug fit against the bracket mounting area.

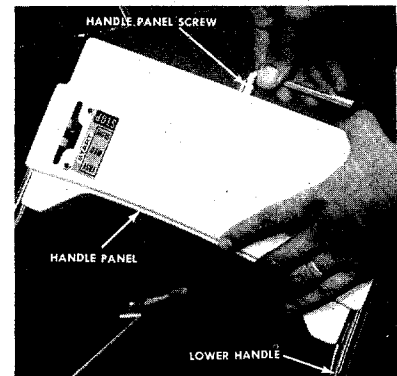


FIGURE 3. HANDLE PANEL ASSEMBLY

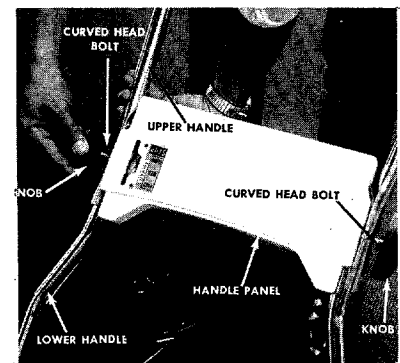


FIGURE 4. UPPER HANDLE ASSEMBLY

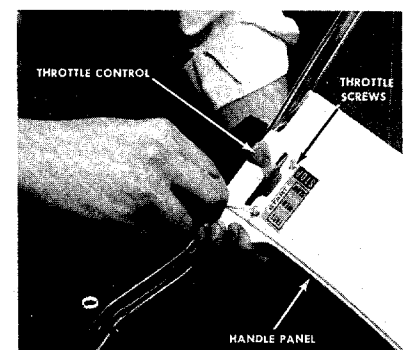


FIGURE 5. THROTTLE CONTROL ASSEMBLY

HANDLE ASSEMBLY MODEL 125-295A

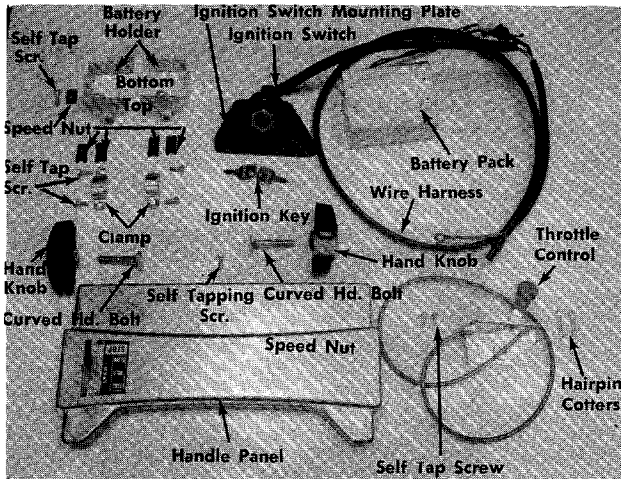


FIGURE 1. PARTS PROVIDED

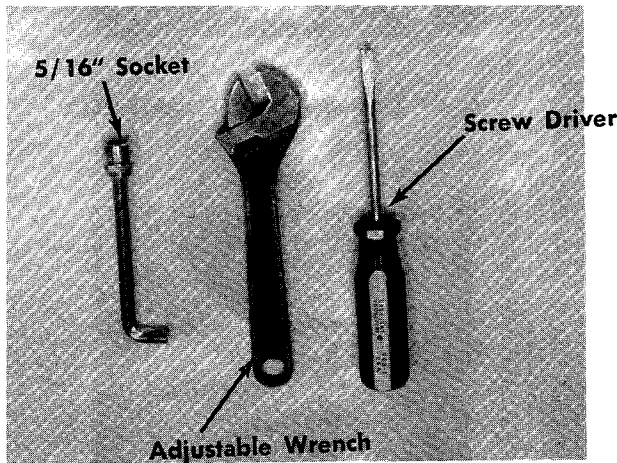


FIGURE 2. TOOLS REQUIRED

1. Place the throttle control in handle panel and secure with two hex slotted head screws. See figure 3.

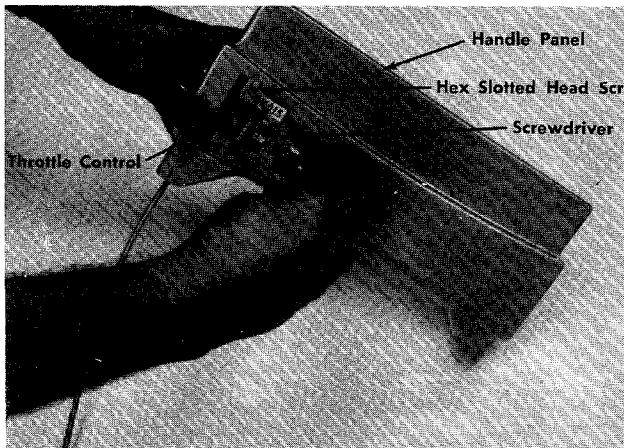


FIGURE 3. THROTTLE ASSEMBLY

2. Place a speed nut on bottom of one of the battery holders. See figure 1.
3. Place both battery holders around battery pack. See figure 4.
4. Secure battery holders to battery pack with a hex slotted self tapping screw. See figure 4.

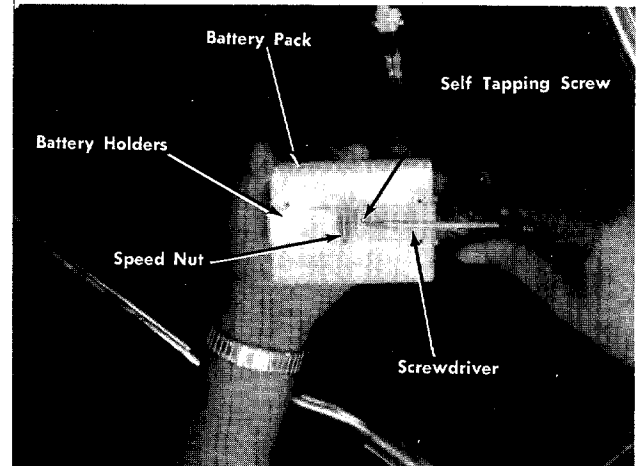


FIGURE 4. ASSEMBLY OF BATTERY HOLDERS

5. Place four more speed nuts on the top of battery holders. See figure 1.
6. Place the battery pack with battery holders in the center of the lower handle. See figure 5.
7. Secure battery pack in position with two clamps and two self tapping screws. See figure 5. NOTE: Just start two screws on bottom of clamps. Do not tighten.

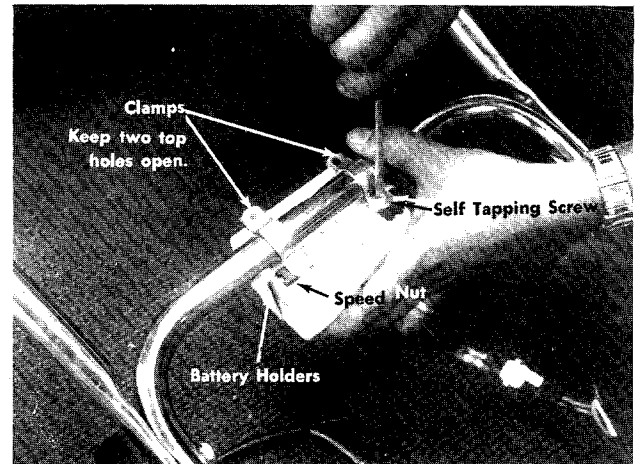


FIGURE 5. ASSEMBLY OF BATTERY PACK TO HANDLE

8. Place the ignition plate in position. See figure 6.

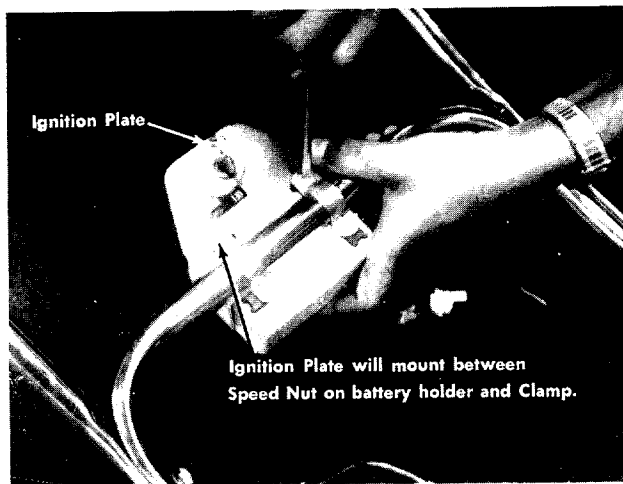


FIGURE 6. ASSEMBLY OF IGNITION PLATE

9. Assemble the ignition plate between the battery holders and clamps with two self tapping screws. See figure 6.
10. Now all four screws holding battery pack and ignition plate can be tightened securely.
11. Place the upper handle in position and start the hand knobs onto the curved head bolts. Do not tighten.
12. Place the handle panel in position over the head of the curved head bolts and secure the hand knobs tightly.
13. Remove the ignition keys from the ignition switch. See figure 7.



FIGURE 7. HANDLE PANEL ASSEMBLY

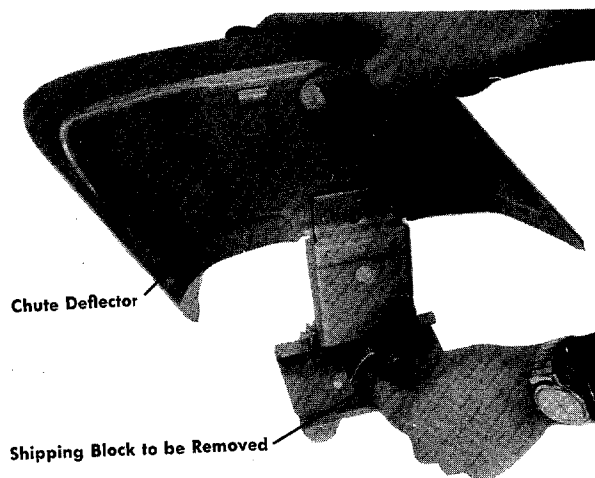
14. Secure top center of handle panel with hex head screw. See figure 7.
15. Place handle assembly on mower and secure with two hairpin cotters provided. See figure 1.
16. Secure throttle control wire to handle with cable clips.
17. Plug wire harness into engine.
18. Check ALL nuts and bolts for correct tightness.

NOTE

It may be necessary to spread the ends of the lower handle outward slightly to assure a snug fit against the bracket mounting area.

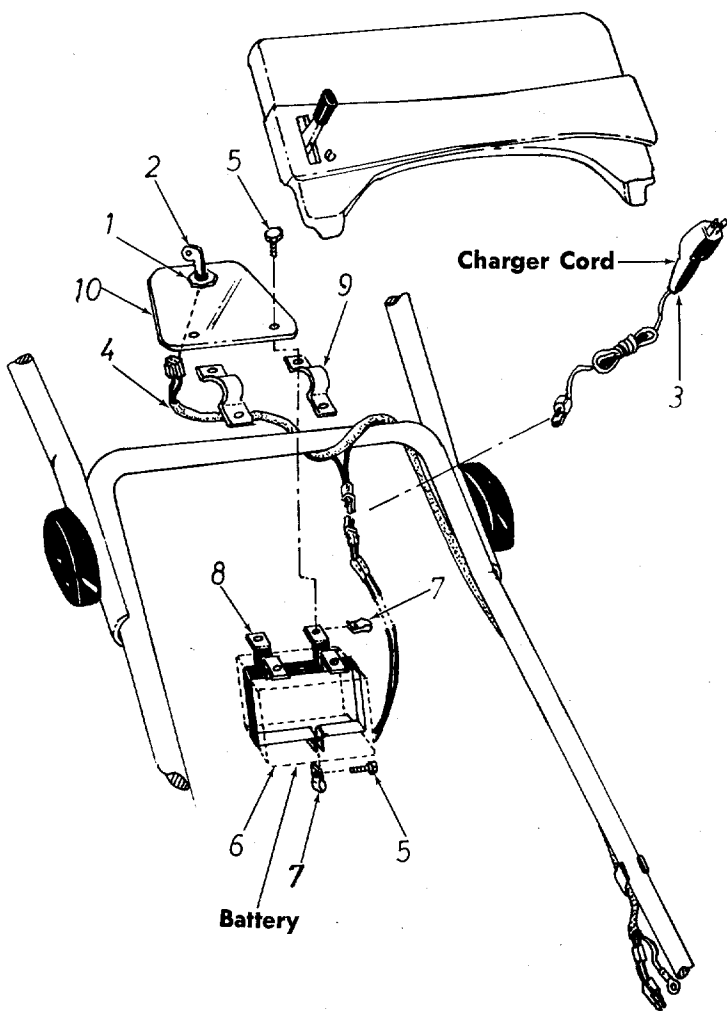
CAUTION

Please note that the chute deflector on your mower is in an upright position. It is held in that position by a shipping block. This block is used for shipping purposes only. It must be removed and discarded before your mower is put into operation.



Parts List for Model 125-295A Electrical System

Ref. No.	Part No.	DESCRIPTION () Number Req'd.
1	725-0267	Ignition Switch
2	725-0201	Ignition Key
3	725-0304	G.E. Charger (#49B111LD03)
4	725-0305	Wire Harness
5	710-0429	Hex-B-Tapping Scw #10 Thd. x .38" Lg. (5)
6	725-0303	Battery G.E. Model (41B906LD02-G2)
7	712-0344	Speed Nut #10Z (5)
8	11638	Battery Holder Assembly
9	11618	Clamp (2)
10	11813	Switch Bracket



NOTE: This instruction manual covers various models and all accessories shown do not necessarily apply to your model mower. The engine is NOT under warranty by the mower manufacturer.

Find us fast in the



If repairs or service is needed on the engine, please contact your nearest authorized engine service outlet. Check the "Yellow Pages" of your telephone book under "Engines - Gasoline."

BATTERY CARE

1. To completely charge a discharged battery it takes 14-16 hours.
2. Recharge on ordinary 110-120 Volt, 60 Cycle house current.
3. Battery may be recharged on lawn mower or removed if more convenient.
4. Charger will not overcharge or damage battery if left on for an extended period.
5. ALWAYS REMOVE THE CHARGER PLUG FROM THE BATTERY BEFORE REMOVING THE CHARGER FROM THE HOUSE CURRENT.
6. REMOVE IGNITION KEY AND KEEP IN A DIFFERENT LOCATION WHENEVER LAWN MOWER IS NOT IN USE TO PREVENT ACCIDENTAL STARTING.

NOTE

For shipping purposes your mower is set with the wheels in a low cutting height position. For best results raise the cutting position until it is determined which height is best for your lawn. See adjustments.

OPERATION

1. Service engine with gas and oil. See engine manual packed with lawn mower for complete instructions for the care and maintenance of engine. READ DIRECTIONS CAREFULLY.
2. To disconnect the power to the rear drive wheels so the mower can be pushed by hand, depress the handle.
To engage the drive wheels, lift the handle.
3. When turning the mower depress the handle and raise the front wheels, and pivot on the rear wheels. The differential action of the rear axle allows the wheels to turn independently on turns and allows both wheels to drive when the handle is in the UP position.

START ENGINE

With the throttle lever conveniently mounted on the handle, start, fast, slow and stopping of the engine is conveniently controlled with one lever. After the engine has been properly fueled and oiled (refer to engine operating and maintenance instructions), start engine in the following manner.

RECOIL STARTER

1. Move throttle control lever to START position.
2. Crank engine. Pull recoil with a quick firm pull. Do not pull out so far that rope stops with a jerk as this will cause rope failure. Do not allow rope and handle to snap back into place.
3. After two or three full firm pulls on recoil (or as soon as engine fires), move speed control to run position.
4. Operate a new engine at intermediate speeds and light load for the first few hours as you would a new automotive engine.
5. To stop engine, move speed control lever to STOP position.
6. If carburetor needs adjustment to start or for operation, see "Carburetor Readjustment" section.

ELECTRIC START

1. Move throttle control to START position.
2. Insert the key and turn clockwise until the engine starts.
3. To start the engine manually, remove the plastic cap from the flywheel, wrap a short piece of rope around the starter pulley, set the throttle control in the START position and pull the rope to start.
4. Operate a new engine at intermediate speeds and light load for the first few hours as you would a new automotive engine.
5. To stop engine, move speed control lever to STOP position.
6. If carburetor needs readjustment to start or for operation, see "Carburetor Readjustment" section.

NOTE: A brief break-in period is essential to insure maximum engine life. This consists of running the engine at half speed for a period of time required to use one tank of gasoline. This is necessary on the initial run only. It is also recommended that the oil be changed after five (5) hours of operation. This allows for the removal of impurities which may have accumulated during the break-in period. Subsequent oil changes should be made as stated in the engine manual. Always check oil before using your mower. Be sure crankcase is full.

ADJUSTMENTS

CAUTION

Do not at any time make any adjustment to lawn mower without first stopping engine and disconnecting spark plug wire.

CUTTING HEIGHT

This mower can be adjusted for seven cutting heights. To change the height, move the height adjustment lever away from the engine and forward to lower the cutting height and move to rear to raise the cutting height. The one lever adjusts all four wheels at the same time.

BELT

The belt requires no adjustment. The idler maintains the proper tension on the belt at all times.

THROTTLE

If adjustment becomes necessary, the throttle control wire assembly can be reset as follows:

1. Loosen, but do not remove, screw securing throttle control wire assembly at engine.
2. Move throttle control lever on handle to "FAST" position.
3. Move lever, to which control wire is fastened at engine, to full open position and retighten screw to secure throttle control wire assembly.

USING YOUR ROTARY MOWER

For the best results do not cut wet grass because it tends to stick to the underside of the mower, thus preventing proper discharge of grass clippings. If wet grass must be cut, reduce walking speed to help distribute the clippings more effectively.

New grass should be treated as wet grass, otherwise a normal walking speed is about the right pace for efficient mowing.

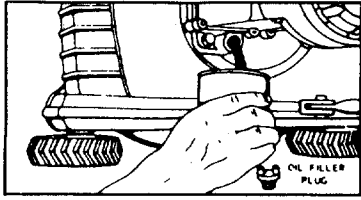
The best mowing pattern is one that allows the clippings to discharge towards the uncut part of the lawn. This permits recutting of the clippings to further pulverize them. When cutting high weeds, discharge towards cut portion then recut at right angles to first direction.

Lawn should be cut in the fall as long as there is growth.

LUBRICATION

IMPORTANT: Always stop engine and disconnect spark plug wire before cleaning, lubricating or doing any kind of work on lawn mower.

Engine — Follow engine manual for lubrication instructions.



NOTE: FILL AND DRAIN OIL FROM OIL FILL PLUG

Always disconnect spark plug cable during repairs, refueling or changing oil. Engine oil may be drained through oil filler opening by tilting the mower on its side. Change oil after first 5 hours of operation while engine is warm. Thereafter, change oil every 25 hours of operation while engine is warm.

Chain—Lubricate periodically with light engine oil (SAE No. 10 or 20).

Controls—Lubricate periodically the control assemblies and conduit and wire with light engine oil for ease of operation.

Wheels—Lubricate periodically bearings on front wheels with light engine oil. Rear drive wheels are equipped with sintered bearings. Lubricate at least once a season with light oil.

Protective Shield—The pivot points on the protective shield should be lubricated periodically with light oil to prevent any rust or binding.

Chute Deflector—The torsion spring and pivot point should be lubricated periodically with light oil to prevent any rust or binding. Deflector must work freely.

MAINTENANCE

CUTTING BLADE

The blade may easily be removed for grinding or replacement as follows:

1. Remove bolt and lock washer holding blade and blade adapter to engine crankshaft.
2. Remove blade and blade adapter from engine crankshaft.
3. Remove two bolts, lock washers and nuts holding blade to blade adapter (if necessary).

When sharpening blade, follow the original angle of grind as a guide. It is extremely important that each cutting edge receives an equal amount of grinding to prevent an unbalanced blade. An unbalanced blade will cause excessive vibration when rotating at high speeds and may cause damage to the mower.

NOTE

To insure safe operation of your unit, ALL nuts and bolts must be checked periodically for correct tightness.

Deck—The underside of mower deck should be cleaned after each period of use as grass clippings, leaves, dirt and other matter will accumulate. This accumulation of grass clippings, etc., is undesirable as it will invite rust and corrosion and may cause an uneven discharge of grass clippings at the next cutting.

The deck may be cleaned by tilting the mower forward or on its side and scraping clean with a suitable tool or by washing with a stream of water from a garden hose.

CAUTION: Do not direct the stream of water at a hot engine as damage to the engine may result.

Belt Removal (Refer to drawings on Pages 10 and 12.)

1. Be sure spark plug wire is removed from spark plug.
2. Remove the belt guard (Ref. No. 65) by removing the two screws on the belt guard.
3. Move the height adjustment lever (Ref. No. 27) to the high position.
4. Place a piece of plastic film under gas cap and tighten it. The plastic prevents gasoline from draining from the air vent in the cap.
5. Place the handle of mower on a table or bench so that the underside of deck is showing.
6. Remove cutting blade (Ref. No. 38) by removing blade bolt (Ref. No. 40).
7. Remove deck (Ref. No. 37) by removing four bolts (Ref. No. 43). **NOTE:** If you have a grass catcher adapter plate on your unit remove only one bolt, one towards the front wheels.
8. Remove master link (Ref. No. 4) and chain (Ref. No. 4).
9. Remove rear wheel hub cap (Ref. No. 25) from right hand rear wheel only.
10. Remove cotter pin (Ref. No. 24) ratchet (Ref. No. 23) and right hand rear wheel (Ref. No. 21).
11. Remove spring (Ref. No. 39) from cam assembly (Ref. No. 17).
12. Remove shoulder bolt (Ref. No. 42) from rear axle assembly (Ref. No. 5) on the right hand side only.
13. Remove cotter pin (Ref. No. 31) from shaft assembly (Ref. No. 43).
14. Pull idler assembly (Ref. No. 12) towards you and pull belt (Ref. No. 11) over idler.
15. Slide shaft assembly (Ref. No. 43) to the left.
16. Pull belt down past PTO pulley (Ref. No. 10) and over end of rear axle assembly (Ref. No. 5).
17. To replace with new belt, reverse the above steps.

Storage — The following steps should be taken to prepare the mower for storage.

1. Clean and lubricate mower thoroughly as described in the preceding instructions.
2. Refer to engine manual for correct engine storage instructions.
3. Coat mower's cutting blade with chassis grease to prevent rusting.
4. Store mower in dry, clean area.

HANDLE STORAGE

This model is so equipped to provide easy fold away handle storage.

1. Loosen the two plastic knobs on each side, center of handle.
2. Pull outward on the bottom of each side of the lower handle and push forward.
3. Fold the upper handle back and down.

To Take the Handle out of Storage Position.

1. Lift the upper handle up and towards the rear.
2. Pull the handle back until it **Locks** into the operator's position.
3. Tighten the two plastic knobs securely.

GRASS CATCHER Model No. 195-003A is available as optional equipment for the mowers shown in this manual.

WARNING

1. The mower should not be operated without the entire grass catcher or chute deflector in place.
2. The mower should not be operated without the protective shield on the rear of the deck in place.

NOTE

Under normal usage bag material is subject to wear and should be checked periodically. Be sure any replacement bag complies with the mower manufacturer's recommendations.

For replacement bags, use only factory authorized replacement bag No. 764-0119.

NOTE

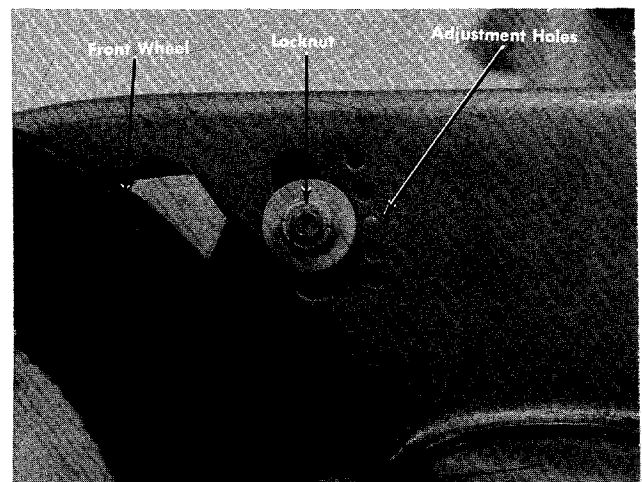
The manufacturer **DOES NOT** recommend the use of any accessory on this Rotary Mower other than those manufactured by MTD Products Inc.

★ IMPORTANT

After striking a foreign object, stop the engine, remove wire from spark plug. Thoroughly inspect the mower for any damage, and repair the damage before restarting and operating the mower.

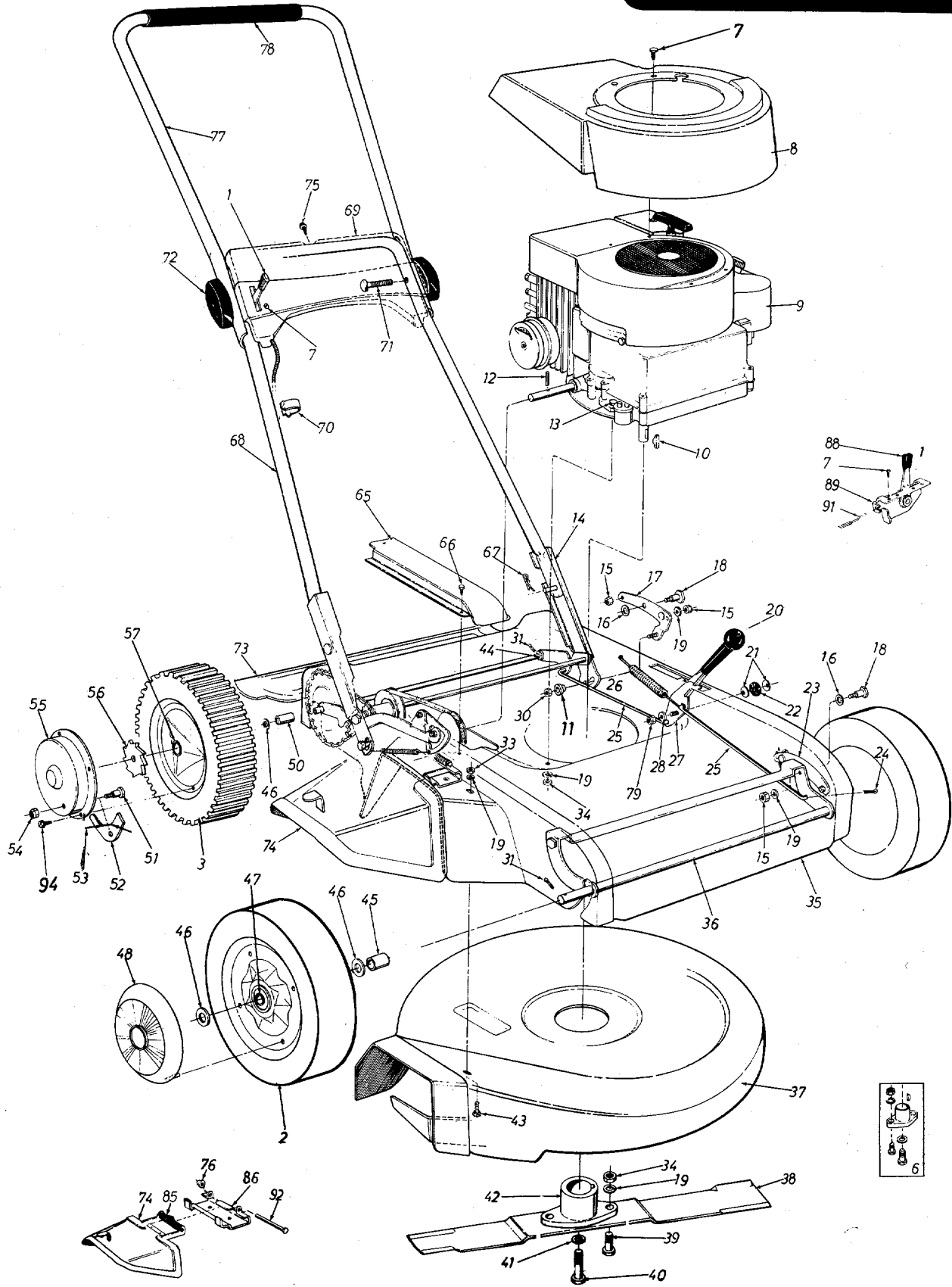
An adjustment is provided on the left side of the upper deck, next to the front and rear wheels, to compensate for wear or use of the grass catcher to keep the cutting deck level.

To adjust, loosen the locknuts and move either up or down as necessary. Tighten the locknuts securely. Both adjustments should be in the same relative position. See illustration below.



125-290A 125-295A

IF YOU WRITE TO US ABOUT THIS ARTICLE
OR IF YOU ORDER REPLACEMENT PARTS AL-
WAYS MENTION THIS MODEL & SERIAL NO
MODEL



PARTS LIST FOR MODEL NOS. 125-290A AND 125-295A

REF. NO.	PART NO.	COLOR CODE	DESCRIPTION	NEW PART	REF. NO.	PART NO.	COLOR CODE	DESCRIPTION	NEW PART
1	11611		Throttle Control Ass'y.—Comp.		42	10769		Blade Adapter Kit	
2	734-0661		Front Wheel Ass'y.—Comp.		43	710-0260		Carriage Bolt 5/16-18 x 5/8" Lg.*	
3	734-0538		Rear Wheel Ass'y.—Comp.		44	748-0142		Flange Bearing—Rear	
6	10769		Blade Adapter Kit		45	748-0190		Front Wheel Spacer	
7	710-0227		Slotted Hex Washer Hd. Ext. Scr. #8-32 x 1.50" Lg.		46	736-0160		Flat Washer	
8	10642-462 10611-462		Engine Shroud (125-290A) Engine Shroud (125-295A)		47	741-0180		Ball Bearing—Front Wheel	
9	—		Engine		48	731-0124		Hub Cap—Front Wheel	
10	714-0365		Key Hi Pro #505		50	750-0190		Rear Wheel Spacer	
11	748-0234		Shoulder Spacer	N	51	738-0137		Shoulder Bolt—Special	
12	715-0105		Spirol Pin 3/16" Dia. x .50" Lg.		52	748-0188		Pawl—Rear Wheel	
13	710-0158		Hex Scr. 5/16-24 x 1.25" Lg.*		53	10622		Nylon Spring	
14	10623		Handle Ext. Ass'y.		54	712-0219		Hex Elastic Stopnut 1/4-20 Thd	
15	712-0798		Hex Nut 3/8-16 Thd.		55	10647		Hub Cap—Rear Wheel	
16	736-0221		Internal L-Wash .38 I.D.		56	748-0187		Ratchet—Rear Wheel	
17	10656		Rear Height Pivot Bracket Ass'y.		57	748-0125		Sintered Bearing—Rear Wheel	
18	738-0149		Shoulder Bolt—Special		65	10635-462		Belt Guard Cover	
19	736-0119		Spring Lockwasher 5/16 Scr.*		66	710-0224		Hex Hd. Self Tap Scr. #10 x .50" Lg.*	
20	720-0143		Grip—Height Adjuster		67	714-0104		Hairpin Cotter	
21	736-0105		Belleville Washer		68	10970		Lower Handle	
22	735-0126		Rubber Washer		69	11606-462		Handle Panel	
23	10658		Front Height Pivot Brkt. Ass'y.		70	746-0128		Cable Clip	
24	714-0507		Cotter Pin 3/32 x .75" Lg.*		71	710-0405		Curved Hd. Scr. 5/16-18 x 1.75" Lg.*	
25	10080		Rod—Height Adj. 5/16 Thd.*		72	09966		Knob—Handle Ass'y.	
26	732-0153		Spring 8.65" Lg.		73	12251-462		Protective Shield Ass'y.—Comp.	
27	10666		Height Adj. Lever		74	11679-462		Chute Deflector	
28	736-0160		Flat Washer*		75	710-0148		Hex Wash. Hd. F-Tapp Scr. #8-32 x .38" Lg.	
29	735-0127		Rubber Washer		76	726-0106		Push-on Flange Palnut	
30	712-0158		Hex Center Lock Nut 5/16-18 Thd.*		77	10011		Upper—Handle	
31	714-0115		Cotter Pin 1/8" Dia. x 1" Lg.*		78	718-0144 (43)		Grip	
33	712-0267		Hex Nut 5/16-18 Thd.*		79	712-0711		Hex Jam Nut 3/8-24 Thd.	
34	712-0123		Hex Nut 5/16-24 Thd.*		82	714-0115		Cotter Pin 1/8 Dia. x N1.00	
35	11428-462		Upper Deck Ass'y.		85	732-0253		Torsion Spring	
36	10662		Front Axle Ass'y.		86	11130-462		Adapter Plate	
37	11425-462		Lower Deck Ass'y.		87	07299		Oil Fill Trough (Not Shown)	
38	742-0124		Blade—21 inch		88	07470		Throttle Control—Knob	
39	710-0117		Hex Scr. 5/16-24 x 1" Lg.—H.T.		89	11598		Throttle Control Ass'y.	
40	710-0459		Hex Scr. 3/8-24 x 1.50" Lg.—H.T.		90	710-0567		Hex Sems Scr. 1/4-28 x .62" Lg.	
41	736-0217		Spring Lockwasher 3/8 Scr. H.D.		91	746-0231		Conduit and Wire	
					92	711-0555		Pivot Pin	
					94	710-0407		Slotted Hex Wash. Hd. Ext. Scr. No. 8-32 x .50" Lg.	

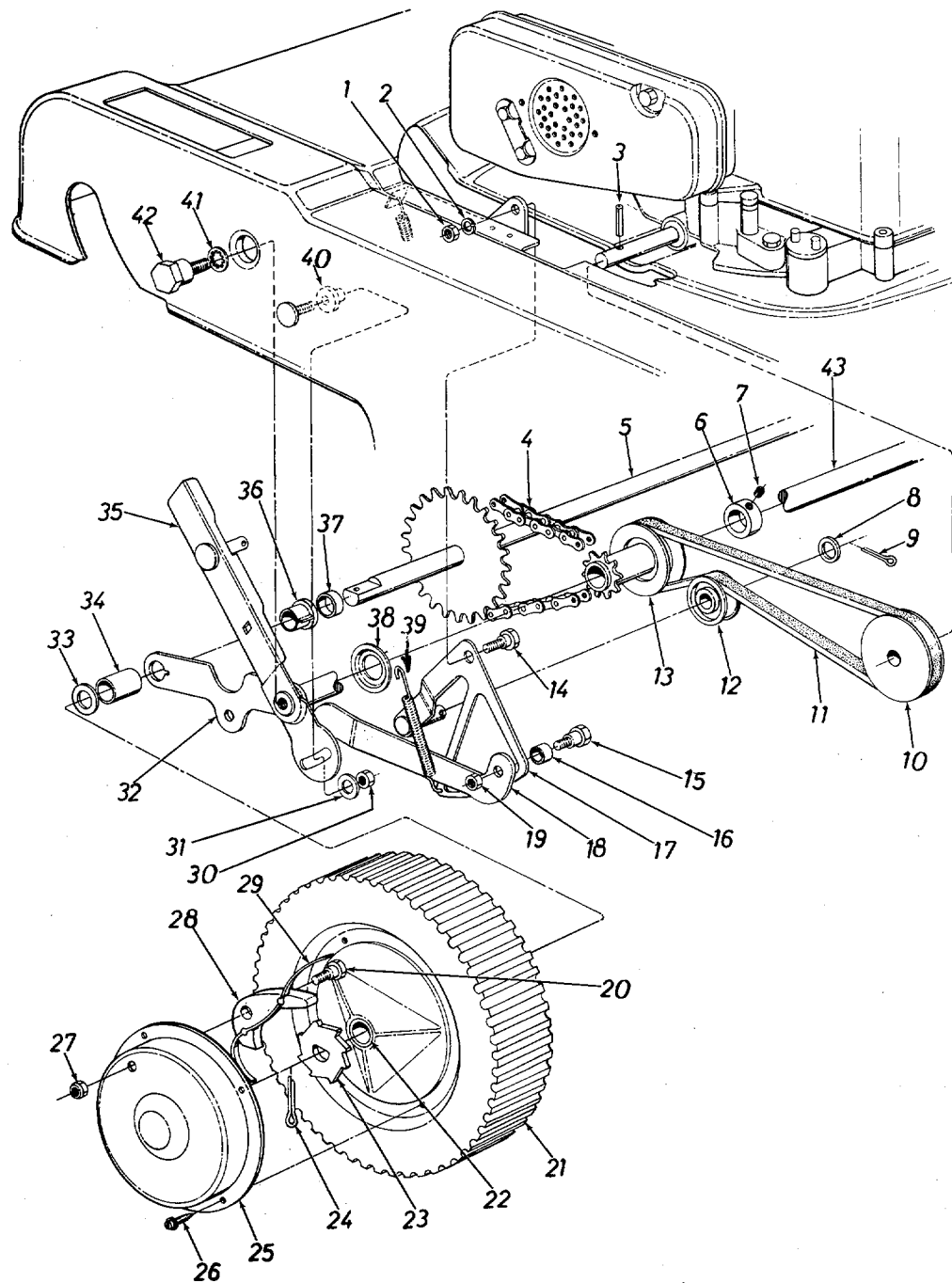
* For faster service, obtain standard nuts, bolts and washers locally. If these items cannot be obtained locally, order by part number and size as shown on the parts list.

462—Red Flake

When ordering parts, if color or finish is important, use the appropriate color code shown above (e.g. Red Flake Finish, 11428 462.)

125-290A 125-295A

IF YOU WRITE TO US ABOUT THIS ARTICLE
OR IF YOU ORDER REPLACEMENT PARTS AL-
WAYS MENTION THIS MODEL & SERIAL NO
MODEL



PARTS LIST FOR MODELS 125-290A AND 125-295A

REF. NO.	PART NO.	COLOR CODE	DESCRIPTION	NEW PART	REF. NO.	PART NO.	COLOR CODE	DESCRIPTION	NEW PART
1	712-0267		Hex Nut 5/16-18 Thd.*		22	748-0125		Sintered Bearing—Rear Wheel	
2	736-0119		L-Wash. 5/16" Scr.*		23	748-0187		Ratchet—Rear Wheel	
3	715-0105		Spring Pin Spiral 3/16" Dia. x .50" Lg.		24	714-0115		Cotter Pin 1/8" Dia. x 1.00" Lg.*	
4	713-0144		Roller Chain #48 x 15.50" Lg.		25	10647		Hub Cap—Rear Wheel	
	713-0122		#48 Master Link		26	710-0227		Hex Wash. Hd. AB-Tapp Scr. #8 x .38" Lg.	
5	11866		Rear Shaft Ass'y.		27	712-0219		Hex Elastic Stop Nut 1/4-20 Thd.	
6	711-0169		Collar 5/8" I.D.		28	748-0188		Pawl—Rear Wheel	
7	710-0421		Set Scr. 5/16-18 x .25" Lg.—Cup		29	10622		Nylon—Spring	
8	736-0160		Flat Washer		30	712-0158		Hex Center L-Nut 5/16-18 Thd.	
9	714-0115		Cotter Pin 1/8" Dia. x 1.00" Lg.*		31	736-0160		Flat Washer	
10	756-0115		Pulley for P.T.O.		32	11900		Rear Axle Ass'y.	
11	754-0114		"V"-Belt 1/2" x 24" Lg.		33	736-0160		Flat Washer	
12	756-0192		Plastic Idler		34	750-0190		Rear Wheel Spacer	
13	756-0191		Pulley with Sprocket		35	12624		Pivot Arm Ass'y.—R.H.	N
14	738-0140		Shoulder Bolt—Special		36	748-0142		Flange Bearing—Rear	
15	738-0141		Shoulder Bolt—Special		37	711-0494		Spacer	
16	750-0122		Sleeve		38	10665		Spacer	
17	11920		Cam Assembly		39	732-0265		Spring	
18	12624		Pivot Arm Ass'y.—R.H.	N	40	748-0233		Shoulder Spacer	N
19	712-0158		Hex Cent. L-Nut 5/16-18 Thd.		41	736-0221		Internal L-Wash. .38 I.D.	
20	738-0137		Shoulder Bolt—Special		42	738-0149		Shoulder Bolt—Special	
21	734-0538		Rear Wheel Ass'y.—Comp.		43	11900		Rear Axle Ass'y.	

PARTS INFORMATION

DEFECTIVE OR MISSING PARTS must be reported to the factory immediately. Such claims must include your model number and date of purchase.

POWER EQUIPMENT PARTS AND SERVICE

Parts and service for all MTD manufactured power equipment are available through the authorized service firms listed below. All orders should specify the model number of your unit, parts numbers, description of parts and the quantity of each part required.

A 1 Engine & Mower Co.
327 East 9th Street
Salt Lake City, Utah 84102

Auto Electric & Carburetor Co.
2525 4th Avenue, S.
P. O. Box 1948
Birmingham, Alabama 35233

Automotive Equipment Service Co.
3117 Holmes Street
Kansas City, Missouri 64109

Bailey's Rebuild Inc.
1325 E. Madison Street
Seattle Washington 98102

Bleckie, Inc.
7900 Lorain Avenue
Cleveland, Ohio 44102

Brown Equipment Distributor Inc.
110 Beech Street
Corydon, Indiana 47112

Bullard Supply
2409 Commerce Street
Houston, Texas 77003

Catto & Putty, Inc.
P. O. Box 2408
510 Soledad Street
San Antonio, Texas 78205

Center Supply Company
6867 New Hampshire Avenue
Takoma Park, Maryland 20012

Dixie Sales Company
P. O. Box 1408
327 Battleground Avenue
Greensboro, North Carolina 27402

East Point Cycle & Key Shop
1617 Whiteway
East Point, Georgia 30044

Gamble Distributors
West End Avenue
Carthage, New York 13619

Garden Equipment Co., Inc.
6600 Cherry Avenue
Long Beach, California 90805

Gardenville Supply, Inc.
Pipersville, Pennsylvania 18947

Henry W. O'Neil & Assoc., Inc.
410 North Goodman Street
Rochester, New York 14609

Henzler, Inc.
2015 Lemay Ferry Road
St. Louis, Missouri 63125

Kenton Supply
8216 North Denver Avenue
Portland, Oregon 97217

Kimber's Inc.
115 W. Geddes St.
Syracuse, New York 13204

Marr Brothers
423 E. Jefferson
Dallas, Texas 75203

McClure Lawn & Garden Supply
1114 Lexington Avenue
Mansfield, Ohio 44907

Memphis Cycle & Supply Co.
421 Monroe Avenue
Memphis Tennessee 38103

Morton B. Collins Co.
300 Birnie Avenue
Springfield, Massachusetts 01107

Moz-All of Florida, Inc.
365 Greco Avenue
Coral Gables, Florida 33146

National Central
687 Seville Rd.
Wadsworth, Ohio 44281

Parts & Sales Inc.
2101 Industrial Pkwy.
Elkhart, Indiana 46514

Power Equipment Distributor
36463 So. Gratiot Avenue
Mt. Clemens, Michigan 48043

Power Lawn & Garden Equip. Co.
2551-2571 J. F. Kennedy Road
Dubuque, Iowa 52001

Radco Distributors
2403 Market Street
P. O. Box 3216
Jacksonville, Florida 32206

Raub Supply Company
James & Mulberry Sts.
Lancaster, Pennsylvania 17604

Richmond Battery & Ignition
P. O. Box 25369 - 957 Myers St.
Richmond, Virginia 23260

R. P. W., Inc.
623 S. 16th Street
Omaha, Nebraska 68102

Smith Hardware Company
515 N. George Street
Goldsboro, North Carolina 27530

South Denver Lawn Equip. Co.
527 West Evans
Denver, Colorado 80223

Suhren Engine
8330 Earhart Blvd.
New Orleans, Louisiana 70118

Sutton's Lawn Mower Shop
Route 4, Box 343
North Little Rock, Arkansas 72117

Woodson Sales & Service
1702 North Sylvania
Ft. Worth, Texas 76111

WARRANTY PARTS AND SERVICE POLICY

The purpose of warranty is to protect the customer from defects in workmanship and materials, defects which are NOT detected at the time of manufacture. It does not provide for the unlimited and unrestricted replacement of parts. Use and maintenance are the responsibility of the customer. The manufacturer cannot assume responsibility for conditions over which it has no control. Simply put, if it's the manufacturer's fault, it's the manufacturer's responsibility; if it's the customer's fault, it's the customer's responsibility.

CLAIMS AGAINST THE MANUFACTURER'S WARRANTY INCLUDES

1. Replacement of Missing Parts on new equipment.
2. Replacement of Defective Parts within the warranty period.
3. Repair of Defects within the warranty period.

All claims MUST be substantiated with the following information:

1. Model Number of unit involved.
2. Date unit was purchased or first put into service.
3. Date of failure.
4. Nature of failure.