

Owner's Operating Service Instruction Manual

10¢

**Model No.
124-570A**

- **ASSEMBLY**
- **OPERATION**
- **REPAIR PARTS**

25" HI WHEEL ROTARY MOWER

WARRANTY

For one year from date of purchase, MTD Products Inc will replace for the original purchaser, free of charge, F.O.B. factory or authorized service firm, any part or parts found to be defective in material or workmanship. All transportation charges on parts submitted for replacement under this warranty must be paid by the purchaser. This warranty does not include replacement of parts which become inoperative through misuse, excessive use, accident, neglect, improper maintenance or alterations by unauthorized persons. This warranty does not include the engine, motor, battery, battery charger or any component parts thereof. For service on these units, refer to the applicable manufacturer's warranty.

The above warranty will apply only to the original owner and will be effective only if the warranty card has been properly processed. It will not apply where the unit has been used commercially.

Warranty service is available through your local authorized service dealer or distributor. **UNDER NO CIRCUMSTANCES WILL THE RETURN OF A COMPLETE UNIT BE ACCEPTED BY THE FACTORY UNLESS PRIOR WRITTEN PERMISSION HAS BEEN EXTENDED.**

MTD PRODUCTS INC • 5389 WEST 130th STREET • P. O. BOX 2741 CLEVELAND OHIO 44111

PRINTED IN U.S.A.

FORM NO. 770-4894

I M P O R T A N T

SAFE OPERATION PRACTICES FOR WALK-BEHIND MOWERS

TRAINING

1. Read the Operating and Service Instruction Manual carefully. Be thoroughly familiar with the controls and the proper use of the equipment.
2. Never allow children to operate a power mower.
3. Keep the area of operation clear of all persons, particularly small children and pets.

PREPARATION

1. Thoroughly inspect the area where the equipment is to be used and remove all stones, sticks, wire, bones and other foreign objects.
2. Do not operate equipment when barefoot or wearing open sandals. Always wear substantial footwear.
3. Check the fuel before starting the engine. Do not fill the gasoline tank indoors, when the engine is running, or while the engine is still hot. Wipe off any spilled gasoline before starting the engine.
4. Disengage the self-propelled mechanism or drive clutch on units so equipped before starting the engine (motor).
5. Never attempt to make a wheel adjustment while the engine (motor) is running.
6. Mow only in daylight or in good artificial light.
7. Never operate the equipment in wet grass. Always be sure of your footing; keep a firm hold on the handle and walk, never run.

OPERATION

1. Do not change the engine governor settings or overspeed the engine.
2. Do not put hands or feet near or under rotating parts. Keep clear of the discharge opening at all times.
3. Stop the blade(s) when crossing gravel drive, walks or roads.
4. After striking a foreign object, stop the engine (motor), remove the wire from spark plug, thoroughly inspect the mower for any damage, and repair the damage before restarting and operating the mower.

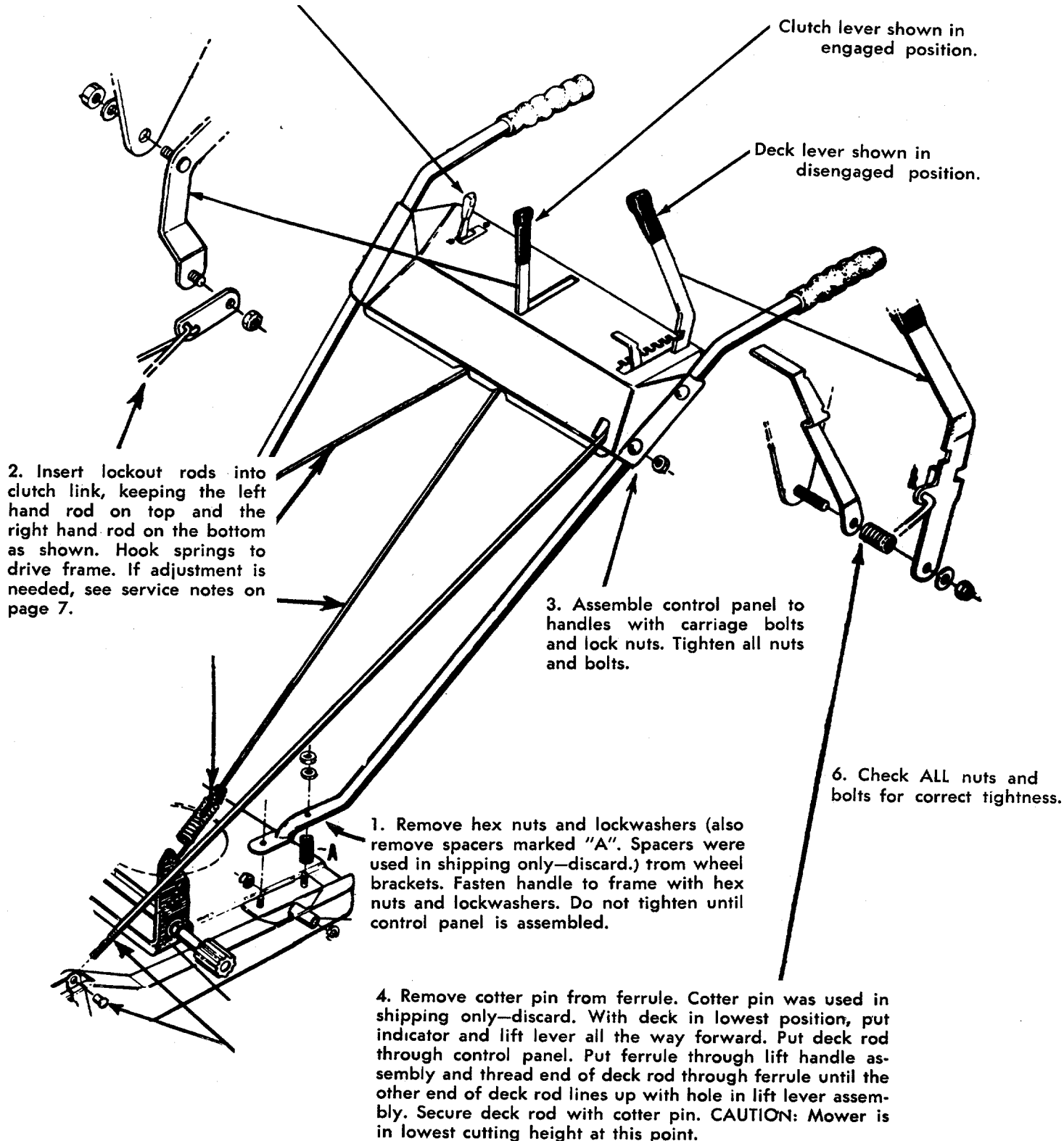
5. If the equipment should start to vibrate abnormally, stop the engine (motor) and check immediately for the cause. Vibration is generally a warning of trouble.
6. Stop the engine (motor) whenever you leave the equipment, before cleaning the mower housing, and when making any repairs or inspections.
7. When cleaning, repairing or inspecting, make certain the blade and all moving parts have stopped. Disconnect the spark plug wire, and keep the wire away from the plug to prevent accidental starting.
8. Do not run the engine indoors.
9. Shut the engine (motor) off and wait until the blade comes to a complete stop before removing the grass catcher or unclogging chute.
10. Mow across the face of slopes, never up-and-down. Exercise extreme caution when changing direction on slopes. Do not mow excessively steep slopes.
11. Always disconnect electric mowers (line operated) before cleaning, repairing or adjusting.
12. Never operate mower without proper guards, plates or other safety protective devices in place.
13. Keep washout ports and other mower-housing service openings closed when mowing.

MAINTENANCE AND STORAGE

1. Check the blade and engine mounting bolts at frequent intervals for proper tightness.
2. Keep all nuts, bolts, and screws tight to be sure the equipment is in safe working condition.
3. Never store the equipment with gasoline in the tank inside of a building where fumes may reach an open flame or spark. Allow the engine to cool before storing in any enclosure.
4. To reduce fire hazard, keep the engine free of grass, leaves, or excessive grease.
5. Check the grass catcher bag frequently for wear or deterioration. Replace with new bag for safety protection.

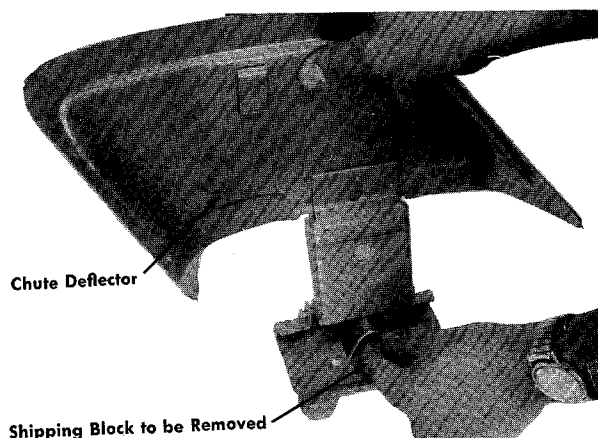
ASSEMBLY INSTRUCTIONS

5. To assemble throttle control loosen, but do not remove, screw securing throttle control wire assembly at engine. Move throttle control lever on handle panel to "START" position. Move lever to which control wire is fastened to engine to full "OPEN" position. Retighten screw to secure throttle control wire assembly.



CAUTION

Please note that the chute deflector on your mower is in an upright position. It is held in that position by a shipping block. This block is used for shipping purposes only. It must be removed and discarded before your mower is put into operation.



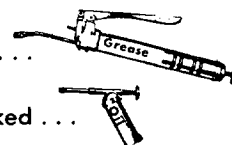
OPERATION

1. Before starting engine, lubricate all bronze bearings on the drive shaft of the self-propelled mechanism.
2. Check lubricant in the gear box. This must be maintained half full at all times and should be checked prior to each mowing. See LUBRICATION.
3. Check lockout control levers for proper operation. If too great a pressure is needed to operate these controls, damage can be done to both the mechanism and the rods. Readjust so only a slight pressure is needed to operate both the blade engaging control and the self-propelled lockout control.
4. Service engine with gasoline and oil. See engine instructions for complete care and maintenance of engine. READ DIRECTIONS CAREFULLY.
5. Be sure engine crankcase is filled to capacity with proper grade of oil.
6. Move blade engaging lever to "OFF" position.
7. Move lockout control to "OFF" position.
8. Move throttle control to "CHOKE" position.
9. Crank engine; move throttle control lever to "FAST" position as soon as needed to keep engine running during warm-up period.
10. The deck lever is on the left side of the handle panel. It is used to engage the blade. The indicator lever is located on the lower part of the deck lever. It is used to set the mower deck at the desired cutting height. Forward position is for the lowest cutting height. Rear position is for the highest cutting height.
11. The clutch lever is located in the center of the handle panel. It is used to engage or disengage drive mechanism. The forward position engages drive and puts mower into forward motion.
12. The throttle control is located on the right hand side of handle panel. This controls engine speed.
13. Fast engine speeds produce better cutting conditions. However, unit should be run at slower speeds until operator is thoroughly familiar with controls.
14. Never attempt to clean or make any adjustments with the engine running.
15. A brief break-in period is essential to insure maximum engine at half speed for a period of time required to use one tank of gasoline. It is also recommended to change crankcase oil after the first five hours of operation. After the initial change, oil should be changed every twenty-five hours of operation or as operating conditions dictate. Always check oil before operating the mower. BE SURE CRANKCASE IS FULL!
16. Proper lubrication must be maintained at all times.
17. Appropriate clothing should be worn when cutting brush or heavy weeds. Safety shoes and safety glasses are highly recommended.
18. The engine is stopped by moving the throttle control lever to "STOP" position.

Refer to parts drawings. Lubricate after each 25 hours of operation the parts indicated. Use multi-purpose

automotive grease on parts marked ...

and SAE 30 engine oil on parts marked ...



IMPORTANT: Always stop engine and disconnect spark plug wire before cleaning, lubricating, or doing any kind of work on the lawn mower.

1. **Wheels**—Wheel bearings are ball bearing. Lubricate periodically with a few drops of oil (SAE No. 10 or 20).
2. **Throttle**—Periodically lubricate throttle control lever and throttle wire assembly with a few drops of light oil (SAE No. 10 or 20) for ease of operation.
3. **Engine**—Follow engine manual for lubrication instructions.
4. **Gear Box**—Check lubricant in the gear box. This must be maintained half full at all times and should be checked prior to each mowing. The gear box is packed at the factory with Alduralube Heavy or Tempriote No. 2. It is suggested that this or an equivalent type and quality fibrous high heat wheel bearing grease be used in maintaining this mechanism.
5. **Protective Shield**—The pivot points on the protective shield should be lubricated periodically with light oil to prevent any rust or binding.
6. **Chute Deflector**—The torsion spring and pivot point should be lubricated periodically with light oil to prevent any rust or binding. Deflector must work freely.

MAINTENANCE

1. **Cutting Blade**—The blade may easily be removed for grinding or replacement as follows:
 - a) Remove bolts and lockwashers holding blade and blade adapter to blade spindle shaft.

- b) Remove blade and blade adapter from blade spindle shaft.
- c) Remove two bolts, lockwashers and nuts holding blade to blade adapter (if necessary).

When sharpening blade, follow the original angle of grind as a guide. It is extremely important that each cutting edge receives an equal amount of grinding to prevent an unbalanced blade. An unbalanced blade will cause excessive vibration when rotating at high speeds and may cause damage to the mower.

NOTE

To insure safe operation of your unit, ALL nuts and bolts must be checked periodically for correct tightness.

2. **Deck**—The underside of the mower deck should be cleaned after each period of use as grass clippings, leaves, dirt, and other matter accumulates. This accumulation of grass clippings, etc., is undesirable as it will invite rust and corrosion and may cause an uneven discharge of grass clippings at next cutting. The deck may be cleaned by tilting the mower backward or on its side and scraping clean with a suitable tool or by washing with a stream of water from a garden hose.

CAUTION: Do not direct the stream of water at a hot engine as damage to the engine may result.

BELT REPLACEMENT

IMPORTANT: Always stop engine and disconnect spark plug wire before doing any kind of work on the lawn mower.

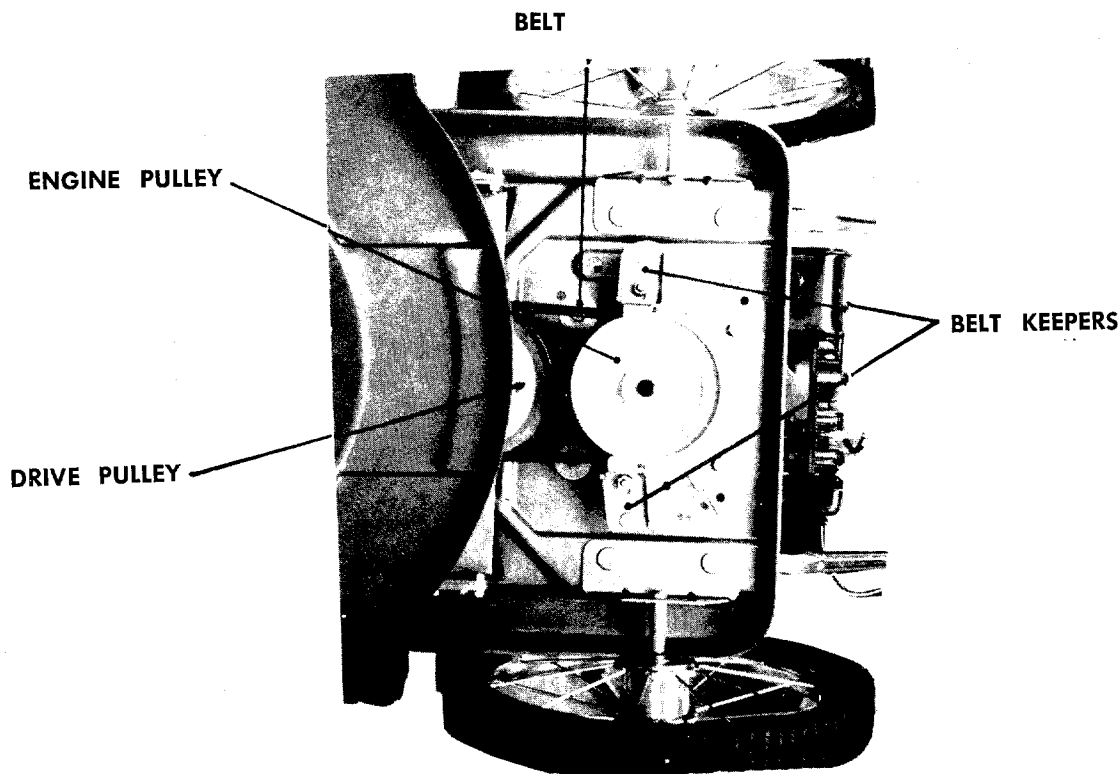
TO REPLACE THE DRIVE BELT

1. Engage deck and tip mower on its right side. (See diagram below.)
2. Remove belt keeper.
3. Remove belt keeper at deck by removing hex nut and spring lockwashers.
4. Disengage deck and remove blade belt from engine pulley.
5. Engage deck and remove cotter pins from link pins. Then remove link pins from deck, let deck drop down.
6. Remove four hex head cap screws and pull down bottom drive frame assembly.

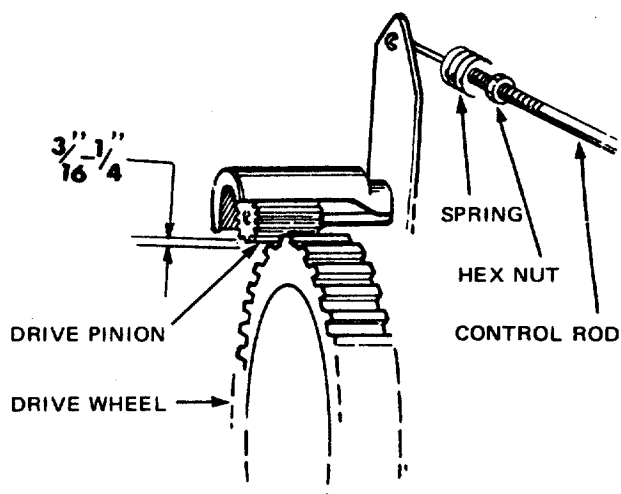
7. Loosen allen set screw. Remove hex head cap screw $\frac{3}{8}$ -24 x 1", lockwasher and flat washer.
8. Pull drive pulley and engine pulley down together and remove old drive belt.
9. Reverse the above steps for re-assembling. Be sure all nuts and bolts are tightened securely.

TO REPLACE THE BLADE BELT

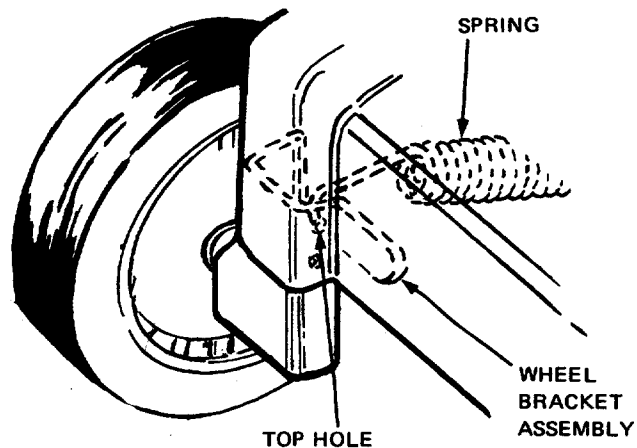
1. Engage deck and tip mower on its right side. (See diagram below.)
2. Remove belt keepers.
3. Remove belt keeper at deck by removing hex nut and spring lockwashers.
4. Disengage the deck and remove the belt. Replace with new belt and reverse the above steps. Be sure ALL nuts and bolts are tightened securely.



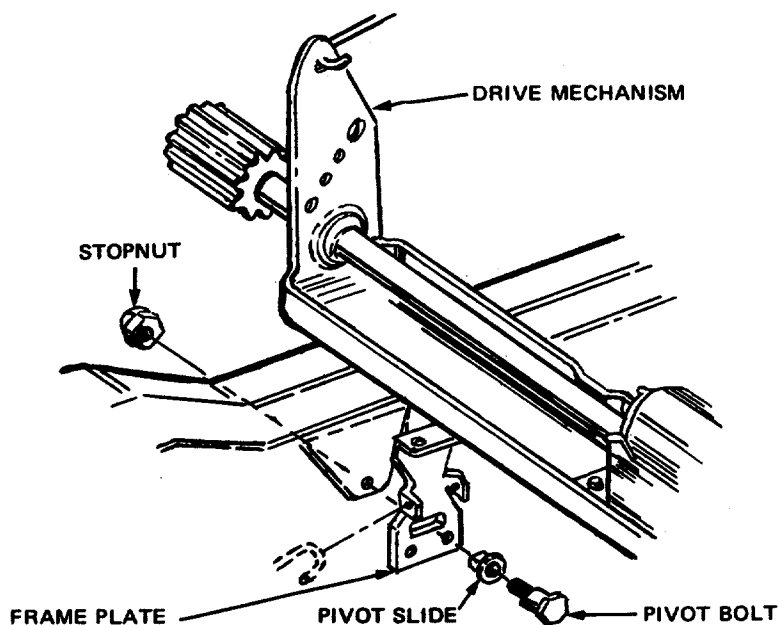
SERVICE NOTES



Clearance between Drive Pinion and Drive Wheel should be $\frac{3}{16}$ " to $\frac{1}{4}$ " when control is in "DIS-ENGAGED" position. Adjust Hex Nut on Control Rod as required. Excess clearance will cause premature belt wear.



The right hand Deck Extension Spring must be assembled over the top of the Wheel Bracket Assembly and attached through the top mounting hole. Assembly otherwise will prevent correct disengagement when raising the deck.



If Drive Mechanism does not pivot freely on frame plates, loosen stop nuts on each side. Belts will damage and wear prematurely if mechanism does not move freely.

NOTE

The manufacturer DOES NOT recommend the use of any accessory on this rotary mower other than those manufactured by MID Products Inc.

IMPORTANT

After striking a foreign object, stop the engine (motor), remove wire from spark plug, thoroughly inspect the mower for any damage, and repair the damage before restarting and operating the mower.

GRASS CATCHER Model No.194-015A is available as optional equipment for the mower shown in this manual.

WARNING:

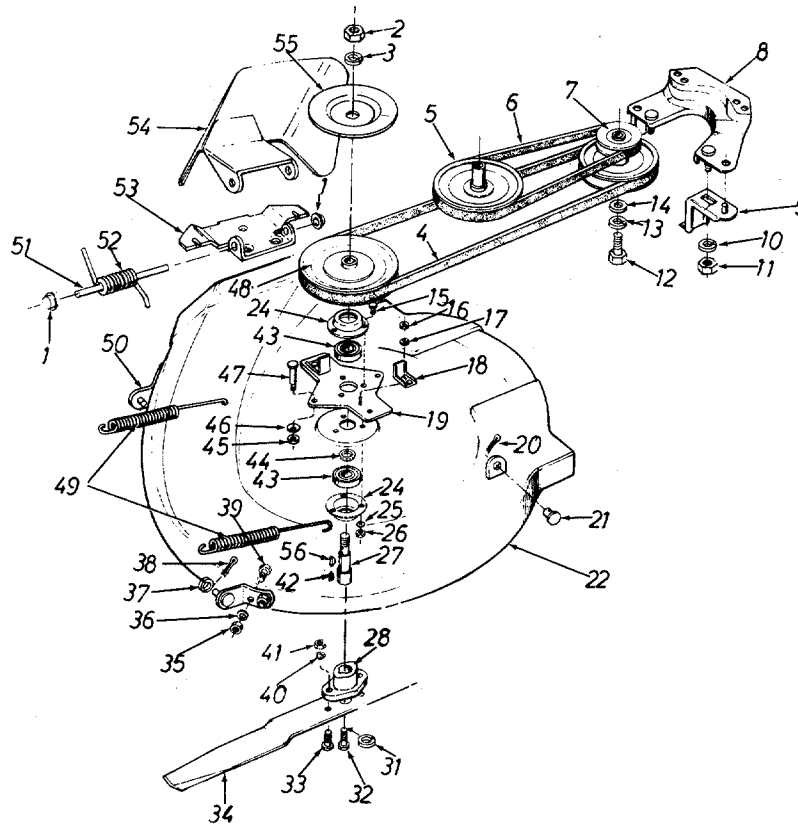
1. The mower should not be operated without the entire grass catcher or chute deflector in place.
2. The mower should not be operated without the protective shield on the rear of the deck in place.

NOTE:

Under normal usage bag material is subject to wear, and should be checked periodically. Be sure any replacement bag complies with the mower manufacturer's recommendations.

For replacement bags, use only factory authorized replacement bag NO. 764-122.

ILLUSTRATION FOR DECK AND PULLEY SYSTEM



PARTS LIST FOR DECK AND PULLEY SYSTEM MODEL NO. 124-570A

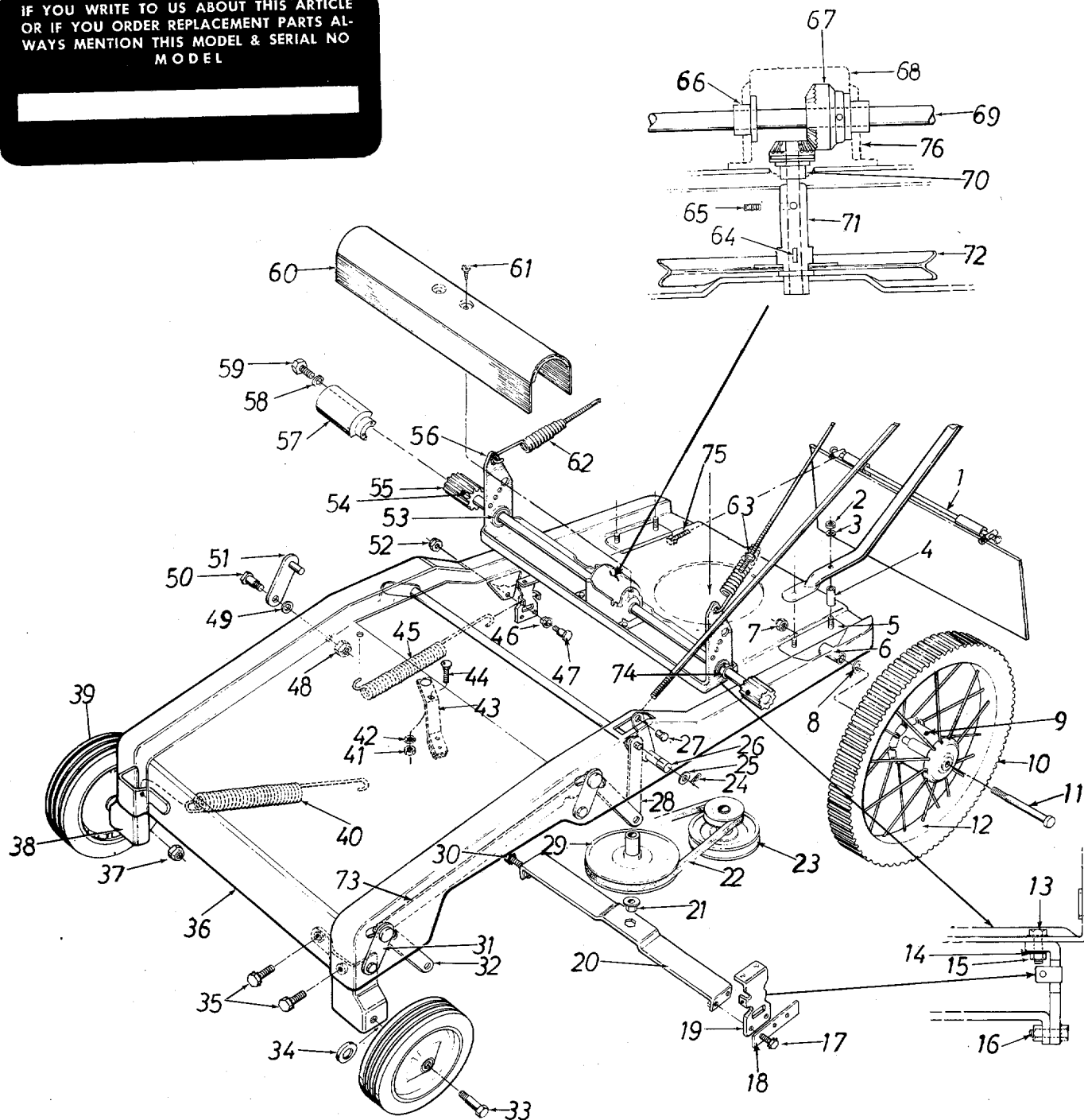
| REF. NO. | PART NO. | COLOR CODE | DESCRIPTION | NEW PART |
|----------|-----------|------------|--|----------|
| 1 | 726-106 | | Push-on Flange Palnut | |
| 2 | 712-242 | | Hex Jam Nut 5/11 Thd. | |
| 3 | 736-158 | | Spring Lockwasher 5/8" Scr.* | |
| 4 | 754-144 | | V-Belt 21/32 x 55" Lg. (Blade Drive Belt) | |
| 5 | 756-155 | | Pulley 6 1/2" Dia. (Drive Pulley) | |
| 6 | 754-143 | | Belt 3V x 28" Lg. (Drive Belt) | |
| 7 | 756-154 | | Two-Step Engine Pulley | |
| 8 | 10423 | | Belt Guard Cup Assembly | |
| 9 | 10426 | | Belt Keeper Assembly | |
| 10 | 736-119 | | Spring Lockwasher 5/16 Scr.* | |
| 11 | 712-267 | | Hex Nut 5/16-18 Thd.* | |
| 12 | 710-152 | | Hex Hd. Cap Scr. 3/8-24 x 1" Lg.* | |
| 13 | 736-169 | | Spring Lockwasher 3/8" Scr.* | |
| 14 | 7386 | | Flat Washer .39 I.D. x 1 3/4" O.D. | |
| 15 | 710-322 | | Sems Hex Hd. Cap Scr. 5/16-18 x 1" Lg.* | |
| 16 | 712-267 | | Hex Nut 5/16-18 Thd.* | |
| 17 | 736-119 | | Spring Lockwasher 5/16" Scr.* | |
| 18 | 10426 | | Belt Keeper Assembly | |
| 19 | 11543 | | Deck Belt Guard Plate Ass'y. | |
| 20 | 714-115 | | Cotter Pin 1/8" Dia.* | |
| 21 | 711-332 | | Lift Bracket Pin | |
| 22 | 11087—458 | | Deck Assembly | |
| 23 | 741-163 | | Bearing Housing Assembly (Includes Ref. No.'s 24 & 43) | |
| 24 | 8253 | | Housing | |
| 25 | 736-119 | | Spring Lockwasher 5/16" Scr.* | |
| 26 | 712-267 | | Hex Nut 5/16-18 Thd.* | |
| 27 | 711-405 | | Blade Spindle | |
| 28 | 10769 | | Blade Adapter Kit | |

9

| REF. NO. | PART NO. | COLOR CODE | DESCRIPTION | NEW PART |
|----------|-----------|------------|---|----------|
| 31 | 736-217 | | Spring Lockwasher 3/8" Scr. Heavy Duty | |
| 32 | 710-459 | | Hex Hd. Cap Scr. 3/8-24 x 1 1/2" Lg. Heat Treated | |
| 33 | 710-117 | | Hex Hd. Cap Scr. 5/16-24 x 1" Lg. Heat Treated | |
| 34 | 742-147 | | Blade 26 inch | |
| 35 | 712-287 | | Hex Nut 1/4-20 Thd.* | |
| 36 | 736-329 | | Spring Lockwasher 1/4" Scr.* | |
| 37 | 736-192 | | Flat Washer .53 I.D.* | |
| 38 | 714-115 | | Cotter Pin 1/8" Dia.* | |
| 39 | 710-258 | | Hex. Hd. Cap Scr. 1/4-20 x .62" Lg.* | |
| 40 | 736-119 | | Spring Lockwasher 5/16" Scr.* | |
| 41 | 712-123 | | Hex Nut 5/16-24 Thd.* | |
| 42 | 714-365 | | #6 Key Hi Pro 5/32 x 5/8" Dia. | |
| 43 | 741-919 | | Ball Bearing | |
| 44 | 750-142 | | Spacer—Blade Spindle | |
| 45 | 712-267 | | Hex Nut 5/16-18 Thd.* | |
| 46 | 736-105 | | Belleville Washer | |
| 47 | 738-129 | | Shoulder Bolt .498 Dia. x 2.005" Lg. | |
| 48 | 756-143 | | Deck Pulley | |
| 49 | 732-153 | | Extension Spring | |
| 50 | 10306 | | Deck Bracket Ass'y.—R.H. | |
| | 10305 | | Deck Bracket Ass'y.—L.H. | |
| 51 | 711-571 | | Pivot Pin | |
| 52 | 732-261 | | Torsion Spring | |
| 53 | 11399—458 | | Adapter Plate | |
| 54 | 11634—458 | | Chute Deflector Ass'y. Comp. | |
| 55 | 11073 | | Blade Brake Disc | |
| 56 | 714-388 | | #6 Key Hi Pro 3/16 x 5/8" Dia. | |

124-570A

IF YOU WRITE TO US ABOUT THIS ARTICLE
OR IF YOU ORDER REPLACEMENT PARTS AL-
WAYS MENTION THIS MODEL & SERIAL NO
MODEL



— NOTE —

Gear box is lubricated with two ounces of Alduralube Heavy. Order by part number 727-111.

NOTE: Set screws in pulleys are treated with a nut and bolt sealant. Remove with allen wrench while applying heat with a small torch. Sealant disintegrates at 400°.

To engage the blade with the engine running...

1. Move the throttle control lever to "FAST" positio
2. Engage the blade engagement lever SLOWLY.
3. Adjust engine speed.

PARTS LIST FOR MODEL 124-570A

| REF. NO. | PART NO. | COLOR CODE | DESCRIPTION | NEW PART | REF. NO. | PART NO. | COLOR CODE | DESCRIPTION | NEW PART |
|----------|----------|------------|--|----------|----------|----------|------------|--|----------|
| 1 | 11648 | | Protective Shield Ass'y.—Comp. | | 36 | 10292 | | Frame Ass'y. | |
| 2 | 712-798 | | Hex Nut $\frac{3}{8}$ -16 Thd.* | | 37 | 712-181 | | Top L-Nut $\frac{3}{8}$ -16 Thd.* | |
| 3 | 736-169 | | Spring L-Wash. $\frac{3}{8}$ " Scr.* | | 38 | 10294 | | Front Wheel Brkt. Ass'y.—R.H. | |
| 4 | — | | Spacer Used in Shipment Only | | | 10293 | | Front Wheel Brkt. Ass'y.—L.H. | |
| 5 | 10297 | | Rear Wheel Brkt. Ass'y.—L.H. | | 39 | 734-642 | | Front Wheel Ass'y.—Comp. | N |
| | 10298 | | Rear Wheel Brkt. Ass'y.—R.H. | | 40 | 732-153 | | Extension Spring | |
| 6 | 711-425 | | Spacer—Rear Axle | | 41 | 712-287 | | Hex Nut $\frac{1}{4}$ -20 Thd.* | |
| 7 | 712-181 | | Top Locknut $\frac{3}{8}$ -16 Thd.* | | 42 | 736-329 | | Spring L-Wash. $\frac{1}{4}$ " Scr.* | |
| 8 | 736-192 | | Flat Washer .53 I.D.* | | 43 | 761-148 | | Blade Brake Ass'y. | |
| 9 | 718-132 | | Oil Cap (One Each Rear Wheel) | | 44 | 710-134 | | Carriage Bolt $\frac{1}{4}$ -20 x .62" Lg. | |
| 10 | 734-391 | | Tire Only 16 x 1.75 (Rear Wheel) | | 45 | 732-206 | | Extension Spring | |
| | 734-180 | | Rear Wheel Ass'y.—Less Tire | | 46 | 748-180 | | Pivot Slide | |
| 11 | 738-114 | | Axle Bolt—Rear Wheel | | 47 | 711-105 | | Shoulder Bolt 5/16-18 Thd. | |
| 12 | 734-424 | | Rear Wheel Ass'y.—Comp. | | 48 | 712-429 | | Hex Elastic Stop Nut 5/16-18* | |
| | | | | | 49 | 736-264 | | Flat Washer .33 I.D. x $\frac{3}{4}$ O.D. | |
| 13 | 710-198 | | Sems Hex Hd. Cap Scr. 5/16-18 x $\frac{3}{4}$ " Lg.* | | 50 | 738-141 | | Shoulder Bolt 5/16-18* | |
| 14 | 736-119 | | Spring L-Wash. 5/16" Scr.* | | 51 | 9721 | | Pivot Link Ass'y. | |
| 15 | 712-267 | | Hex Nut 5/16-18 Thd.* | | 52 | 712-429 | | Hex Elast. S-Nut 5/16-18 Thd.* | |
| 16 | 710-322 | | Sems Hex Hd. Cap Scr. 5/16-18 x 1" Lg.* | | 53 | 741-138 | | Ball Bearing .627 I.D. | |
| | | | | | 54 | 715-249 | | Roll Pin 3/16" Dia. x 1" Lg.* | |
| 17 | 710-322 | | Sems Hex Hd. Cap Scr. 5/16-18 x 1" Lg.* | | 55 | 748-182 | | Drive Pinion | |
| 18 | 10883 | | Drive Frame Stop | | 56 | 10321 | | Top Drive Frame | |
| 19 | 10320 | | Bottom Drive Frame Plate | | 57 | 10289 | | Pinion Cover | |
| 20 | 10328 | | Bottom Drive Frame Ass'y. | | 58 | 736-722 | | Spring L-Wash. #10 Scr.* | |
| 21 | 748-226 | | Flange Bearing $\frac{1}{2}$ " Dia. | | 59 | 710-224 | | Hex Hd. Self Tap Scr. Type (A) #10 x $\frac{1}{2}$ " Lg.* | |
| 22 | 754-143 | | Belt 3V x 28" Lg. (Drive Belt) | | 60 | 8100 | | Cover—Top Drive Frame | |
| 23 | 756-154 | | Two-Step Pulley (Engine) | | 61 | 710-148 | | Hex Hd. Slotted Thd. Cut Scr. #8-32 x $\frac{3}{8}$ " Lg.* | |
| 24 | 714-101 | | Hair Pin | | 62 | 732-184 | | Spring | |
| 25 | 736-192 | | Flat Washer .53 I.D.* | | 63 | 712-324 | | Hex Elastic Stop Nut $\frac{1}{4}$ -20 Thd. | |
| 26 | 10300 | | Lift Handle Ass'y. | | 64 | 714-229 | | Woodruff Key #2 | |
| 27 | 711-179 | | Adjustment Ferrule | | 65 | 710-421 | | Allen Set Scr. 5/16-18 x $\frac{1}{4}$ " Lg.* | |
| 28 | 10318 | | Deck Link 3 $\frac{3}{4}$ " Lg. | | 66 | 748-110 | | Flange Bearing $\frac{5}{8}$ " Dia. | |
| 29 | 756-155 | | Pulley 6 $\frac{1}{2}$ " Dia. (Drive Pulley) | | 67 | 748-135 | | Bevel Gear | |
| 30 | 710-198 | | Sems Hex Hd. Cap Scr. 5/16-18 x $\frac{3}{4}$ " Lg.* | | 68 | 7716 | | Gear Box Cover | |
| 31 | 9721 | | Pivot Link Ass'y. | | 69 | 10322 | | Drive Shaft | |
| 32 | 10317 | | Deck Link 4 $\frac{3}{4}$ " Lg. | | 70 | 748-108 | | Flange Bearing $\frac{1}{2}$ " Dia. | |
| 33 | 710-427 | | Hex Scr. $\frac{3}{8}$ -16 x 2.00" Lg.* | | 71 | 10254 | | Pinon Ass'y. | |
| 34 | 736-105 | | Belleville Washer | | 72 | 756-155 | | Pulley 6 $\frac{1}{2}$ " Dia. (Drive Pulley) | |
| 35 | 710-259 | | Sems Hex Hd. Cap Scr. 5/16-18 x $\frac{5}{8}$ " Lg.* | | 73 | 10319 | | Connecting Rod | |
| | | | | | 74 | 711-169 | | Collar $\frac{5}{8}$ " Dia. | |
| | | | | | 75 | 710-567 | | Hex Scr. $\frac{1}{4}$ -28 x .62" Lg. | |
| | | | | | 76 | 717-108 | | Gear Box | |
| | | | | | 77 | 741-178 | | Front Wheel Bearing .38 I.D. | N |

(not shown)

10267

Drive Unit Complete

*For faster service obtain standard nuts, bolts and washers locally. If these items cannot be obtained locally, order by part number and size as shown on the parts list.

458—Arctic Blue

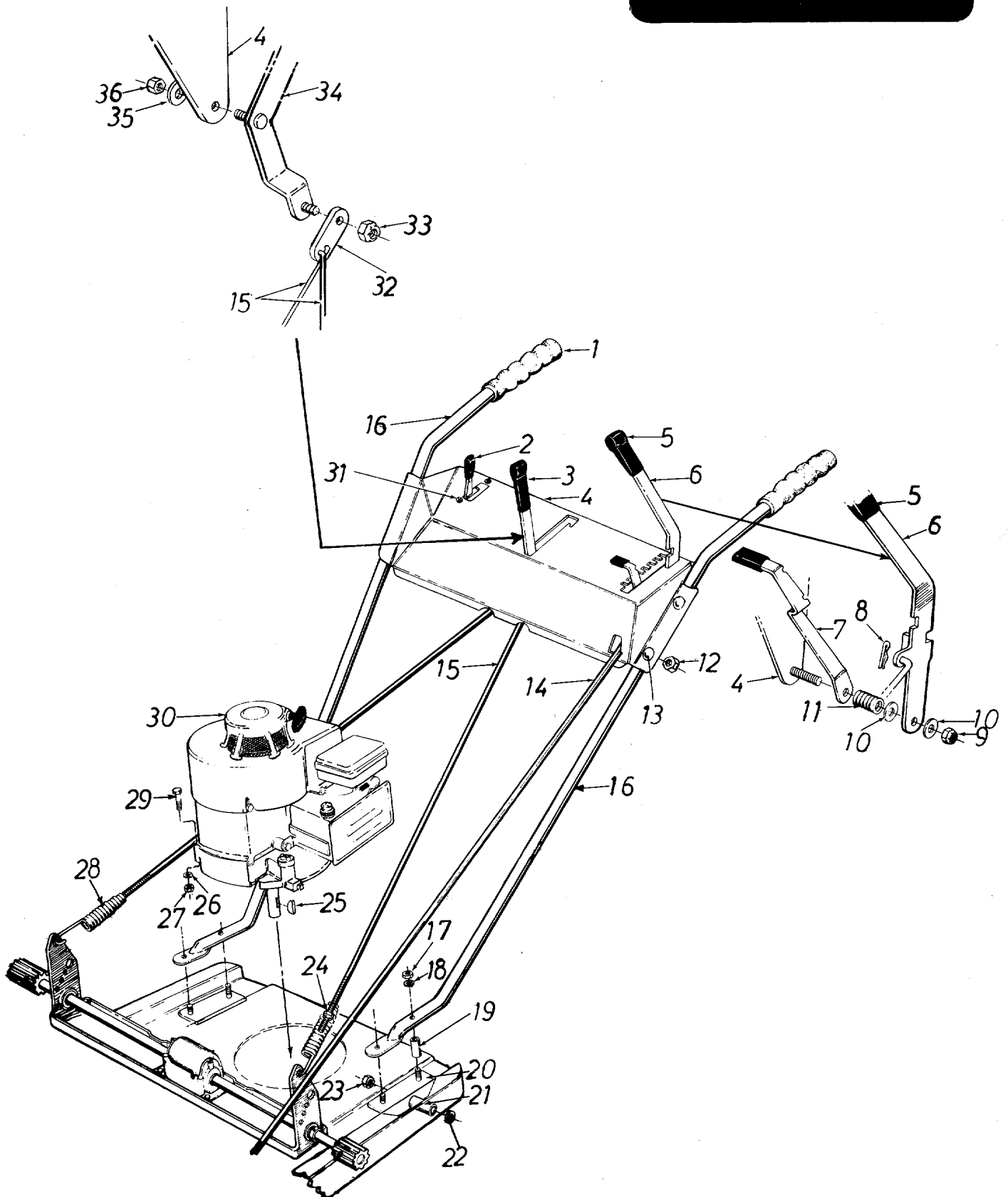
When ordering parts, if color or finish is important use the appropriate color code shown above (e.g. Arctic Blue finish — 10292 (458)).

The engine is not under warranty by the mower manufacturer... If repairs or service is needed on the engine, please contact your nearest authorized engine service outlet. Check the "Yellow Pages" of your telephone book under "Engines—Gasoline."



124-570A

IF YOU WRITE TO US ABOUT THIS ARTICLE
OR IF YOU ORDER REPLACEMENT PARTS AL-
WAYS MENTION THIS MODEL & SERIAL NO
MODEL



PARTS LIST FOR MODEL 124-570A

| REF. NO. | PART NO. | COLOR CODE | DESCRIPTION | NEW PART |
|----------|----------|------------|--|----------|
| 1 | 1166 | | Grip (For Handles) | |
| 2 | 746-161 | | Throttle Control Ass'y.—Comp. | |
| 3 | 720-142 | | Flat Grip (For Clutch Lever) | |
| 4 | 11635 | | Control Panel | |
| 5 | 720-142 | | Flat Grip (For Lift Lever) | |
| 6 | 10324 | | Lift Lever | |
| 7 | 10325 | | Indicator | |
| 8 | 714-507 | | Cotter Pin* | |
| 9 | 712-116 | | Hex Elastic Stop Nut $\frac{3}{8}$ -24 Thd. | |
| 10 | 736-300 | | Flat Washer .39 I.D. | |
| 11 | 732-193 | | Compression Spring | |
| 12 | 712-107 | | Hex Center L-Nut $\frac{1}{4}$ -20 Thd. | |
| 13 | 710-256 | | Carriage Bolt $\frac{1}{4}$ -20 x $1\frac{1}{2}$ Lg.* | |
| 14 | 711-424 | | Deck Rod | |
| 15 | 711-397 | | Lockout Rod (2-Req'd.) | |
| 16 | 10323 | | Handle (2-Req'd.) | |
| 17 | 712-798 | | Hex Nut $\frac{3}{8}$ -16 Thd.* | |
| 18 | 736-169 | | Spring L-Wash. $\frac{3}{8}$ " Scr.* | |
| 19 | — | | Spacer Used in Shipment Only | |
| 20 | 10297 | | Rear Wheel Brkt. Ass'y.—L.H. | |
| 21 | 711-425 | | Spacer—Rear Axle | |
| 22 | 736-192 | | Flat Washer .53 I.D.* | |
| 23 | 712-181 | | Top L-Nut $\frac{3}{8}$ -16 Thd.* | |
| 24 | 712-324 | | Hex Elastic Stop Nut $\frac{1}{4}$ -20 Thd. | |
| 25 | 714-365 | | #6 Key Hi Pro 5/32 x $\frac{5}{8}$ Dia. | |
| 26 | 736-119 | | Spring L-Wash. 5/16" Scr.* | |
| 27 | 712-123 | | Hex Nut 5/16-24 Thd.* | |
| 28 | 732-184 | | Spring | |
| 29 | 710-158 | | Hex Hd. Cap Scr. 5/16-24x1 $\frac{1}{4}$ "* | |
| 30 | — | | Engine | |
| 31 | 710-224 | | Hex Hd. Self Tap Scr. Type (A) #10 x $\frac{1}{2}$ " Lg.* | |
| 32 | 10469 | | Clutch Link | |
| 33 | 712-429 | | Hex Elastic S-Nut 5/16-18 Thd. | |
| 34 | 10270 | | Clutch Lever | |
| 35 | 736-300 | | Flat Washer .39 I.D.* | |
| 36 | 712-116 | | Hex Elastic S-Nut $\frac{3}{8}$ -24 Thd. | |

*For faster service obtain standard nuts, bolts and washers locally. If these items cannot be obtained locally, order by part number and size as shown on the parts list.

458—Arctic Blue

When ordering parts, if color or finish is important, use the appropriate color code shown above (e.g. Arctic Blue finish — 10292 (458).

The engine is not under warranty by the mower manufacturer... If repairs or service is needed on the engine, please contact your nearest authorized engine service outlet. Check the "Yellow Pages" of your telephone book under "Engines—Gasoline."

Find It Fast
In The
'Yellow Pages'



PARTS INFORMATION

DEFECTIVE OR MISSING PARTS must be reported to the factory immediately. Such claims must include your model number and date of purchase.

POWER EQUIPMENT PARTS AND SERVICE

Parts and service for all MTD manufactured power equipment are available through the authorized service firms listed below. All orders should specify the model number of your unit, parts numbers, description of parts and the quantity of each part required.

A 1 Engine & Mower Co.

327 East 9th Street
Salt Lake City, Utah 84102

American Electric Ignition Co.

124 N. W. 8th Street
Oklahoma City, Oklahoma 73102

Auto Electric & Carburetor Co.

2525 4th Avenue, S.
P. O. Box 1948
Birmingham, Alabama 35233

Automotive Equipment Service Co.

3117 Holmes Street
Kansas City, Missouri 64109

Bailey's Rebuild Inc.

1325 E. Madison Street
Seattle Washington 98102

Bleckie, Inc.

7900 Lorain Avenue
Cleveland, Ohio 44102

Brown Equipment Distributor Inc.

110 Beech Street
Corydon, Indiana 47112

Bullard Supply

2409 Commerce Street
Houston, Texas 77003

Carl A. Anderson Co.

623 S. 16th Street
Omaha, Nebraska 68102

Catto & Putty, Inc.

P. O. Box 2408
510 Soledad Street
San Antonio, Texas 78205

Center Supply Company

6867 New Hampshire Avenue
Takoma Park, Maryland 20012

Dixie Sales Company

P. O. Box 1408
327 Battleground Avenue
Greensboro, North Carolina 27402

East Point Cycle & Key Shop

1617 Whiteway
East Point, Georgia 30044

Gamble Distributors

West End Avenue
Carthage, New York 13619

Garden Equipment Co., Inc.

6600 Cherry Avenue
Long Beach, California 90805

Gardenville Supply, Inc.

Pipersville, Pennsylvania 18947

Henry W. O'Neil & Assoc., Inc.

410 North Goodman Street
Rochester, New York 14609

Henzler, Inc.

2015 Lemay Ferry Road
St. Louis, Missouri 63125

Kenton Supply

8216 North Denver Avenue
Portland, Oregon 97217

Kimber's Inc.

115 W. Geddes St.
Syracuse, New York 13204

The Lawnmower Shop

1340 El Camino Real
San Carlos, California 94070

Marr Brothers

423 E. Jefferson
Dallas, Texas 75203

Mathews Auto Electric Co.

420 East 2nd Street
Tulsa Oklahoma 74120

McClure Lawn & Garden Supply

1114 Lexington Avenue
Mansfield, Ohio 44907

Memphis Cycle & Supply Co.

421 Monroe Avenue
Memphis Tennessee 38103

Morton B. Collins Co.

300 Birnie Avenue
Springfield, Massachusetts 01107

Moz-All of Florida, Inc.

365 Greco Avenue
Coral Gables, Florida 33146

BRIGGS & STRATTON, TECUMSEH AND PEERLESS PARTS AND SERVICE

Briggs & Stratton, Tecumseh and Peerless parts and service should be handled by your nearest authorized engine service firm. Check the yellow pages of your telephone directory under the listing *Engines—Gasoline*, Briggs & Stratton or Tecumseh Lauson—Power Products.

National Central, Div. of

Joe Sterling, Inc.
Drawer "D" 687 Seville Rd.
Wadsworth, Ohio 44281

Parts & Sales Inc.

2101 Industrial Pkwy.
Elkhart, Indiana 46514

Power Equipment Distributor

36463 So. Gratiot Avenue
Mt. Clemens, Michigan 48043

Power Lawn & Garden Equip. Co.

2551-2571 J. F. Kennedy Road
Dubuque, Iowa 52001

Radco Distributors

2403 Market Street
P. O. Box 3216
Jacksonville, Florida 32206

Raub Supply Company

James & Mulberry Sts.
Lancaster, Pennsylvania 17604

Richmond Battery & Ignition

P. O. Box 25369—957 Myers St.
Richmond, Virginia 23260

Smith Hardware Company

515 N. George Street
Goldsboro, North Carolina 27530

South Denver Lawn Equip. Co.

527 West Evans
Denver, Colorado 80223

Suhren Engine

8330 Earhart Blvd.
New Orleans, Louisiana 70118

Sutton's Lawn Mower Shop

Route 4, Box 343
North Little Rock, Arkansas 72117

Warner Equipment

7520 Lyndale Avenue, So.
Minneapolis, Minnesota 55423

Woodson Sales & Service

1702 North Sylvania
Ft. Worth, Texas 76111

WARRANTY PARTS AND SERVICE POLICY

The purpose of warranty is to protect the customer from defects in workmanship and materials, defects which are NOT detected at the time of manufacture. It does not provide for the unlimited and unrestricted replacement of parts. Use and maintenance are the responsibility of the customer. The manufacturer cannot assume responsibility for conditions over which it has no control. Simply put, if it's the manufacturer's fault, it's the manufacturer's responsibility; if it's the customer's fault, it's the customer's responsibility.

CLAIMS AGAINST THE MANUFACTURER'S WARRANTY INCLUDES

1. Replacement of Missing Parts on new equipment.
2. Replacement of Defective Parts within the warranty period.
3. Repair of Defects within the warranty period.

All claims MUST be substantiated with the following information:

1. Model Number of unit involved.
2. Date unit was purchased or first put into service.
3. Date of failure.
4. Nature of failure.