

# Owner's Operating Service Instruction Manual

10¢

Model No.  
124-280A

- ASSEMBLY
- OPERATION
- REPAIR PARTS

## 21" SELF-PROPELLED ROTARY MOWER

### WARRANTY

For one year from date of purchase, MTD Products Inc will replace for the original purchaser, free of charge, F.O.B. factory or authorized service firm, any part or parts found to be defective in material or workmanship. All transportation charges on parts submitted for replacement under this warranty must be paid by the purchaser. This warranty does not include replacement of parts which become inoperative through misuse, excessive use, accident, neglect, improper maintenance or alterations by unauthorized persons. This warranty does not include the engine, motor, battery, battery charger or any component parts thereof. For service on these units, refer to the applicable manufacturer's warranty.

The above warranty will apply only to the original owner and will be effective only if the warranty card has been properly processed. It will not apply where the unit has been used commercially.

Warranty service is available through your local authorized service dealer or distributor. **UNDER NO CIRCUMSTANCES WILL THE RETURN OF A COMPLETE UNIT BE ACCEPTED BY THE FACTORY UNLESS PRIOR WRITTEN PERMISSION HAS BEEN EXTENDED.**

# **I M P O R T A N T**

## **SAFE OPERATION PRACTICES FOR WALK-BEHIND MOWERS**

### **TRAINING**

1. Read the Operating and Service Instruction Manual carefully. Be thoroughly familiar with the controls and the proper use of the equipment.
2. Never allow children to operate a power mower.
3. Keep the area of operation clear of all persons, particularly small children and pets.

### **PREPARATION**

1. Thoroughly inspect the area where the equipment is to be used and remove all stones, sticks, wire, bones and other foreign objects.
2. Do not operate equipment when barefoot or wearing open sandals. Always wear substantial footwear.
3. Check the fuel before starting the engine. Do not fill the gasoline tank indoors, when the engine is running, or while the engine is still hot. Wipe off any spilled gasoline before starting the engine.
4. Disengage the self-propelled mechanism or drive clutch on units so equipped before starting the engine (motor).
5. Never attempt to make a wheel adjustment while the engine (motor) is running.
6. Mow only in daylight or in good artificial light.
7. Never operate the equipment in wet grass. Always be sure of your footing; keep a firm hold on the handle and walk, never run.

### **OPERATION**

1. Do not change the engine governor settings or overspeed the engine.
2. Do not put hands or feet near or under rotating parts. Keep clear of the discharge opening at all times.
3. Stop the blade(s) when crossing gravel drive, walks or roads.
4. After striking a foreign object, stop the engine (motor), remove the wire from spark plug, thoroughly inspect the mower for any damage, and repair the damage before restarting and operating the mower.

5. If the equipment should start to vibrate abnormally, stop the engine (motor) and check immediately for the cause. Vibration is generally a warning of trouble.
6. Stop the engine (motor) whenever you leave the equipment, before cleaning the mower housing, and when making any repairs or inspections.
7. When cleaning, repairing or inspecting, make certain the blade and all moving parts have stopped. Disconnect the spark plug wire, and keep the wire away from the plug to prevent accidental starting.
8. Do not run the engine indoors.
9. Shut the engine (motor) off and wait until the blade comes to a complete stop before removing the grass catcher or unclogging chute.
10. Mow across the face of slopes, never up-and-down. Exercise extreme caution when changing direction on slopes. Do not mow excessively steep slopes.
11. Always disconnect electric mowers (line operated) before cleaning, repairing or adjusting.
12. Never operate mower without proper guards, plates or other safety protective devices in place.
13. Keep washout ports and other mower-housing service openings closed when mowing.

### **MAINTENANCE AND STORAGE**

1. Check the blade and engine mounting bolts at frequent intervals for proper tightness.
2. Keep all nuts, bolts, and screws tight to be sure the equipment is in safe working condition.
3. Never store the equipment with gasoline in the tank inside of a building where fumes may reach an open flame or spark. Allow the engine to cool before storing in any enclosure.
4. To reduce fire hazard, keep the engine free of grass, leaves, or excessive grease.
5. Check the grass catcher bag frequently for wear or deterioration. Replace with new bag for safety protection.

# ASSEMBLY INSTRUCTIONS

## HANDLE ASSEMBLY

1. Remove the loose hardware from the assembly pack. You will need a screwdriver and a 5/16" wrench, either a socket as shown in figure 1 or an open end wrench.
2. Assemble the lower handle to the handle brackets as shown in figure 2.
3. Secure the handle with cotter hairpins on both sides. See figure 2.
4. Place the handle panel over the lower handle and fasten with the handle panel screw using a 5/16" wrench. See figure 3.
5. Place the upper handle over the lower handle and line up the holes as shown in figure 4.
6. Insert the curved head bolt from the inside and tighten the knob by hand. See figure 4.
7. Place the throttle control in the handle panel and assemble it with the two throttle screws using a screwdriver. See figure 5.
8. Use the cable clip to fasten the throttle control wire to the lower handle.
9. Check ALL nuts and bolts for correct tightness.

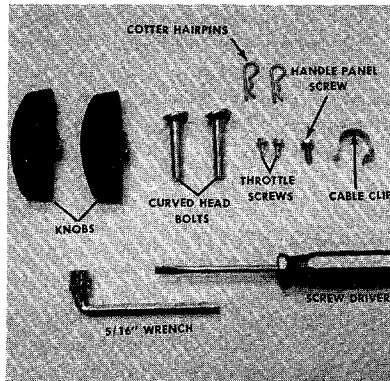


FIGURE 1.  
LOOSE HARDWARE AND TOOLS

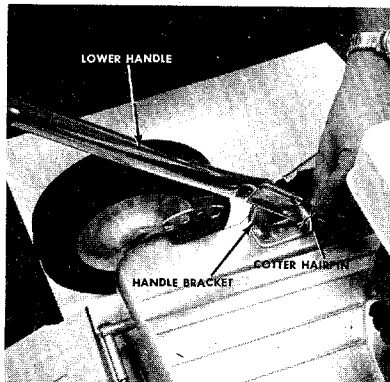


FIGURE 2.  
LOWER HANDLE ASSEMBLY

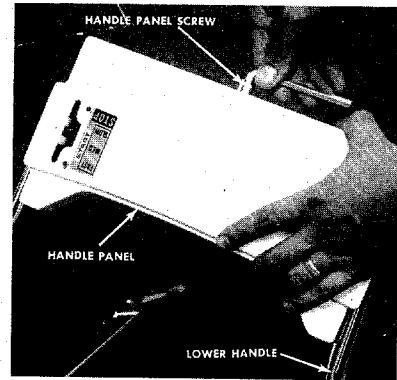


FIGURE 3.  
HANDLE PANEL ASSEMBLY

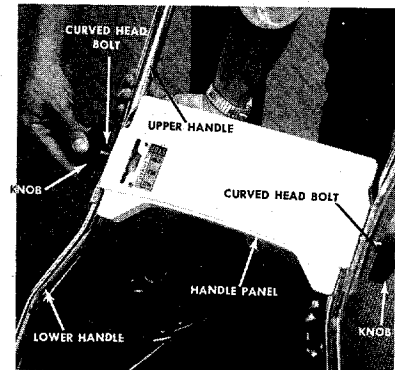


FIGURE 4.  
UPPER HANDLE ASSEMBLY

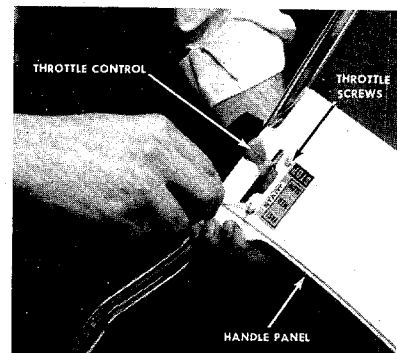


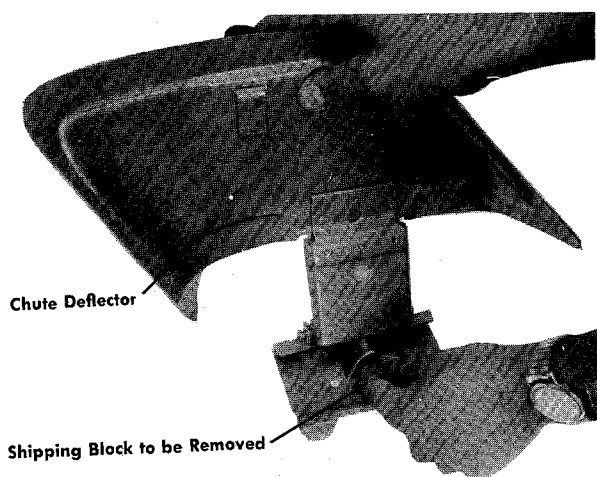
FIGURE 5.  
THROTTLE CONTROL ASSEMBLY

### NOTE

It may be necessary to spread the ends of the lower handle outward slightly to assure a snug fit against the bracket mounting area.

## CAUTION

Please note that the chute deflector on your mower is in an upright position. It is held in that position by a shipping block. This block is used for shipping purposes only. It must be removed and discarded before your mower is put into operation.



## START ENGINE

With the throttle control lever conveniently mounted on the handle, start, fast, slow and stopping of the engine is conveniently controlled with one lever.

After the engine has been properly fueled and oiled (refer to engine operating and maintenance instructions) start engine in the following manner.

## RECOIL STARTER

1. Move throttle control lever to "START" position.
2. Crank engine, pull recoil with a quick firm pull. Do not pull out so far that rope stops with a jerk as this will cause rope failure. Do not allow rope and handle to snap back into place.
3. After two or three full firm pulls on recoil, or as soon as engine fires, move throttle control to run position.
4. Operate a new engine at intermediate speeds and light load for the first few hours as you would a new automotive engine.
5. To stop engine, move speed control lever to stop position.
6. If carburetor needs adjustment to start or for operation, see "Carburetor Readjustment" section.

## NOTE

A brief break-in period is essential to insure maximum engine life. This consists of running the engine at half-speed for a period of time required to use one tank of gasoline. This is necessary on the initial run only. It is also recommended that the oil be changed after five (5) hours of operation. This allows for the removal of impurities which may have accumulated during the break-in period. Subsequent oil changes should be made as stated in the engine manual. Always check oil before using your mower. Be sure crankcase is full.

## ADJUSTMENTS

### CAUTION

Do not at any time make any adjustment to lawn mower without first stopping engine and disconnecting spark plug wire.

### NOTE

For shipping purposes your mower is set with the wheels in a low cutting height position. For best results raise the cutting height position until it is determined which height is best for your lawn.

## 1. CUTTING HEIGHT

An adjusting plate and thumb lever at each wheel position provides cutting height adjustment. Each adjusting plate has five holes. Height of cut will be changed when the thumb lever is moved from one hole to another. Simply depress thumb lever towards wheel and move wheel and lever assembly to desired position. All wheels must be positioned in relative height of cut positions.

## 2. BELT

The belt requires no adjustment. The idler maintains the proper tension on the belt at all times.

## 3. THROTTLE

If adjustment becomes necessary, the throttle control wire assembly can be reset as follows:

- a. Loosen, but do not remove, screw securing throttle control wire assembly at engine.

- b. Move throttle control lever on handle to "FAST" position.
- c. Move lever, to which control wire is fastened at engine, to full open position and retighten screw to secure throttle control wire assembly.

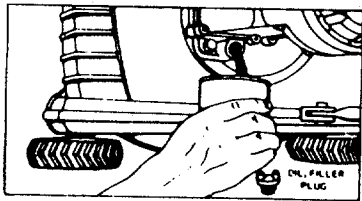
### USING YOUR ROTARY MOWER

For best results, do not cut wet grass because it tends to stick to the underside of the mower thus preventing proper discharge of grass clippings. If wet grass must be cut, reduce walking speed to help distribute the clippings more effectively.

### LUBRICATION

**IMPORTANT:** Always stop engine and disconnect spark plug wire before cleaning, lubricating or doing any kind of work on lawn mower.

**Engine** — Follow engine manual for lubrication instructions.



**NOTE:** FILL AND DRAIN OIL FROM OIL FILL PLUG.

Always disconnect spark plug cable during repairs, refueling or changing oil. Engine oil may be drained through oil filler opening by tilting the mower on its side. Change oil after first 5 hours of operation while engine is warm. Thereafter, change oil every 25 hours of operation while engine is warm.

**Chain** — Lubricate periodically with light engine oil (SAE No. 10 or 20).

**Controls** — Lubricate periodically the control assemblies and conduit wire with light engine oil for ease of operation.

**Wheels** — Front wheel bearings are of self-lubricating Fortiflex. They require no lubrication. Rear drive wheels are equipped with sintered bearings. Lubricate at least once a season with light oil.

**Protective Shield** — The pivot points on the protective shield should be lubricated periodically with light oil to prevent any rust or binding.

**Chute Deflector** — The torsion spring and pivot point should be lubricated periodically with light oil to prevent any rust or binding. Deflector must work freely.

**Cutting Blade** — The blade may easily be removed for grinding or replacement as follows:

1. Remove bolt and lockwasher holding blade and blade adapter to engine crankshaft.
2. Remove blade and blade adapter from engine crankshaft.
3. Remove two bolts, lockwashers and nuts holding blade to blade adapter (if necessary).

When sharpening blade, follow the original angle of grind as a guide. It is extremely important that each cutting edge receives an equal amount of grinding to prevent an unbalanced blade. An unbalanced blade will cause excessive vibration when rotating at high speeds and may cause damage to the mower.

To insure safe operation of your unit, ALL nuts and bolts must be checked periodically for correct tightness.

**Deck** — The underside of the mower deck should be cleaned after each period of use as grass clippings, leaves, dirt and other matter will accumulate. This accumulation of grass clippings, etc., is undesirable as it will invite corrosion and may cause an uneven discharge of grass clippings at the next cutting.

The deck may be cleaned by tilting the mower forward or on its side and scraping clean with a suitable tool or by washing with a stream of water from a garden hose.

### **CAUTION**

Do not direct the stream of water at a hot engine, as damage to the engine may result.

### BELT REMOVAL

(Refer to drawing on page 8).

1. Be sure spark plug wire is removed from spark plug.
2. Remove the belt guard (Ref. No. 85) by removing the two screws on the belt guard.
3. Place a piece of plastic film under gas cap and tighten it. The plastic prevents gasoline from draining from the air vent in the cap.
4. Place the handle of mower on a table or bench so that the underside of deck is showing.
5. Remove cutting blade (Ref. No. 36) by removing blade bolt (Ref. No. 38).

6. Remove deck (Ref. No. 31) by removing four bolts (Ref. No. 32). NOTE: If you have a grass catcher adapter plate on your unit, remove only one bolt, one towards the front wheels.
7. Remove master link and chain (Ref. No. 59).
8. Remove rear wheel hub cap (Ref. No. 69) from right hand rear wheel only.
9. Remove cotter pin, ratchet (Ref. No. 70) and right hand rear wheel (Ref. No. 63).
10. Remove spring (Ref. No. 57) from cam assembly (Ref. No. 91).
11. Remove hex nut (Ref. No. 12) from rear axle assembly (Ref. No. 82) on the right hand side only.
12. Remove cotter pin from axle assembly (Ref. No. 82).
13. Pull idler assembly (Ref. No. 87) toward you and pull belt (Ref. No. 25) over idler.

14. Slide axle assembly (Ref. No. 82) to the left.
15. Pull belt down past P.T.O. pulley (Ref. No. 26) and over end of rear axle assembly (Ref. No. 82).
16. To replace with new belt, reverse the above steps.

**Storage** — The following steps should be taken to prepare lawn mower for storage:

1. Clean and lubricate mower thoroughly as described in the preceding instructions.
2. Refer to engine manual for correct engine storage instructions.
3. Coat mower's cutting blade with chassis grease to prevent rusting.
4. Store mower in dry, clean area.

**NOTE**

The manufacturer DOES NOT recommend the use of any accessory on this rider mower other than those manufactured by MTD Products Inc.

GRASS CATCHER Model No. 194-003A is available as optional equipment for the mowers shown in this manual.

**WARNING:**

1. The mower should not be operated without the entire grass catcher or chute deflector in place.
2. The mower should not be operated without the protective shield on the rear of the deck in place.

**NOTE:**

Under normal usage bag material is subject to wear and should be checked periodically. Be sure any replacement bag complies with the mower manufacturer's recommendations.

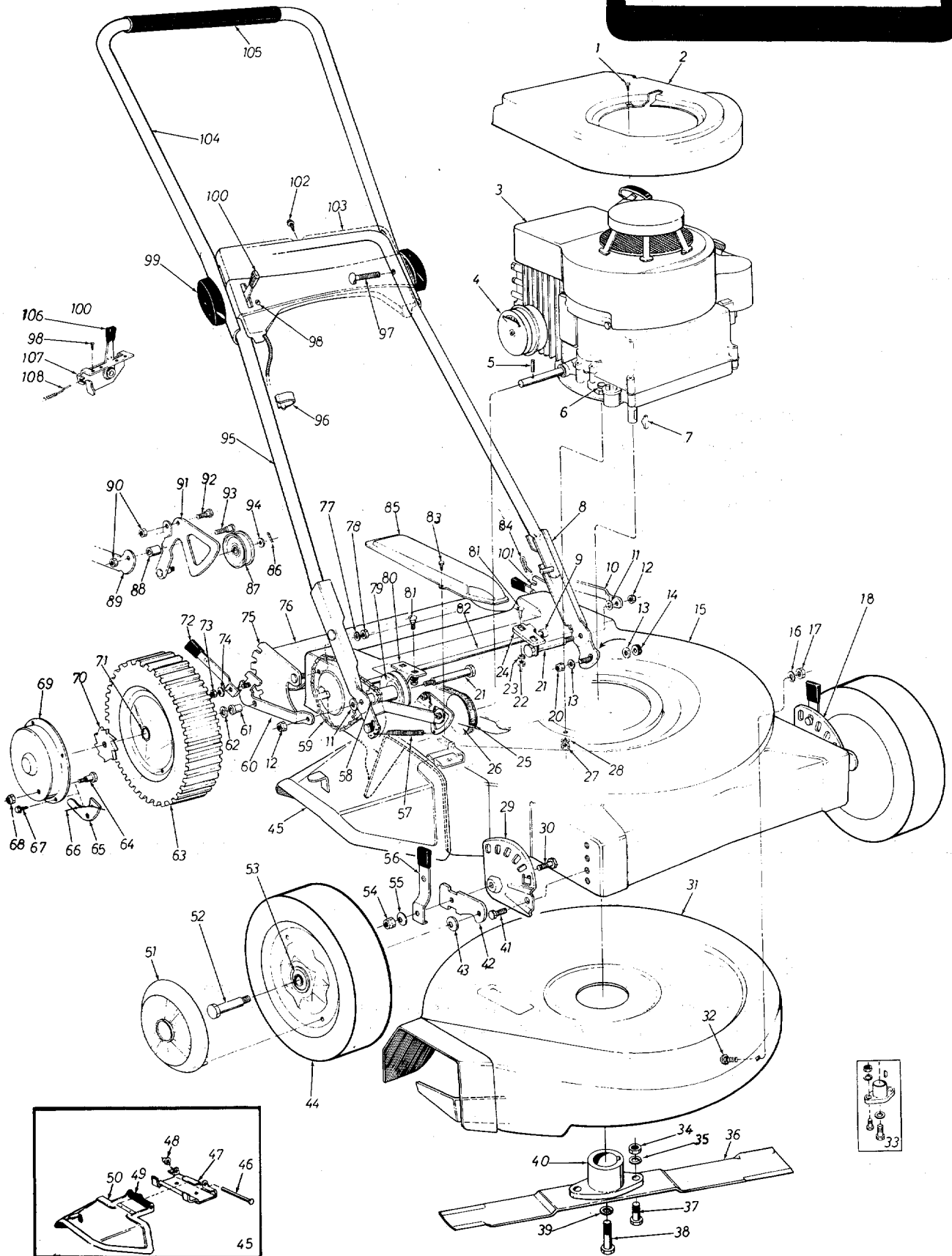
For replacement bags, use only factory authorized replacement bag No. 764-119.

**★ IMPORTANT**

After striking a foreign object, stop the engine (motor), remove wire from spark plug. Thoroughly inspect the mower for any damage, and repair the damage before restarting and operating the mower.

# 124-280A

IF YOU WRITE TO US ABOUT THIS ARTICLE  
OR IF YOU ORDER REPLACEMENT PARTS AL-  
WAYS MENTION THIS MODEL & SERIAL NO  
MODEL





PARTS LIST FOR MODEL 124-280A

REF. NO.	PART NO.	COLOR CODE	DESCRIPTION	NEW PART	REF. NO.	PART NO.	COLOR CODE	DESCRIPTION	NEW PART
1	710-407		Slot Hex Hd. Self Extr. Scr. #8-32 x .50" Lg.*		56	10949		Spring Lever Ass'y. with Knob	
2	10611		Engine Shroud		57	732-265		Spring 3/8" O.D. x 3.17" Lg.	
3	—		Engine		58	748-192		Spacer .635 I.D. x .890 O.D. x .80 Lg.	
4	9278		Exhaust Deflector		59	713-144		#48 Chain 1/2" Pitch x 31 Links	
5	715-105		Spring Pin Spiral 3/16" Dia. x 1.50" Lg.			713-122		#48 Master Link 1/2" Pitch	
6	710-158		Hex Scr. 5/16-24 x 1.25" Lg.*		60	10639		Pivot Bracket Ass'y.—R.H.	
7	714-365		#6 Hi-Pro Key 5/32" x 5/8" Dia.		61	748-142		Flange Bearing	
8	10623		Handle Ext. Ass'y.		62	736-192		Fl-Wash. .531 I.D. x .93 O.D.	
9	748-141		Sleeve Bearing .630 I.D.		63	734-538		Rear Wheel Ass'y.—Comp.	
10	10638		Pivot Bracket Ass'y.—L.H.		64	738-137		Shoulder Scr. .342" Dia. x .268" Lg.	
11	736-219		Belleville Wash. .400 I.D. x 1.13 O.D.		65	748-188		Pawl	
12	712-267		Hex Nut 5/16-18 Thd.*		66	10622		Nylon Spring	
13	736-159		Fl. Wash. .344 I.D. x .88 O.D.		67	710-407		Slot Hex Hd. Self Extr. Scr. #8-32 x .50" Lg.*	
14	735-126		Rubber Wash. .331 I.D. x .87 O.D.		68	712-267		Hex Nut 5/16-18 Thd.*	
15	11427—458		Deck Ass'y.		69	10647		Hub Cap—Rear	
16	736-119		L-Wash. 5/16" Scr.*		70	748-187		Ratchet—Rear Wheel	
17	712-267		Hex Nut 5/16-18" Thd.*		71	748-125		Sleeve Bearing	
18	10950		Height Adj. Ass'y.—L.H.		72	10533		Spring Lever Ass'y. with Knob	
19	10951		Height Adj. Ass'y.—R.H.		73	712-267		Hex Nut 5/16-18 Thd.*	
20	712-158		Hex Center L-Nut 5/16-18 Thd.		74	736-105		Belleville Wash.	
21	738-136		Shoulder Scr. .625" Dia. x 3.380 Lg.		75	10642		Index Plate Ass'y.—R.H.	
22	712-267		Hex Nut 5/16-18 Thd.*		76	12250—458		Rear Protective Shield Ass'y.—Comp.	
23	736-119		L-Wash. 5/16" Scr.*		77	736-119		L-Wash. 5/16" Scr.*	
24	10644—458		Bracket		78	712-267		Hex Nut 5/16-18 Thd.*	
25	754-114		V-Belt 1/2" x 24" Lg.		79	756-191		Pulley with 9 Tooth Sprocket Ass'y.	
26	756-115		Engine Pulley		80	10644—458		Bracket	
27	712-123		Hex Nut 5/16-24 Thd.*		81	710-260		Carriage Bolt 5/16-18 x .62" Lg.*	
28	736-119		L-Wash 5/16" Scr.*		82	10646		Rear Shaft Ass'y.	
29	10934		Index Plate Ass'y.—R.H.		83	710-224		Hex AB-Tapp Scr. #10 x .50" Lg.	
30	—		Weld Scr.—Part of Ref. No. 29		84	714-104		Internal Cotter Pin 5/16" Dia.	
31	11695—458		Lower Deck Ass'y.		85	10645—458		Belt Cover	
32	710-260		Carriage Bolt 5/16-18 x .62" Lg.*		86	714-115		Cotter Pin 1/8" Dia. x 1.00" Lg.*	
33	10769		Blade Adapter Kit		87	756-192		Plastic Flat Idler	
34	712-123		Hex Nut 5/16-24 Thd.*		88	750-122		Sleeve .450 I.D. x .565 O.D.	
35	736-119		L-Wash. 5/16" Scr.*		89	10650		Pivot Arm Ass'y.	
36	742-124		21" Blade		90	712-158		Hex Center L-Nut 5/16-18 Thd.	
37	710-117		Hex Scr. 5/16-24 x 1.00" Lg. H.T.		91	11920		Cam Ass'y.	
38	710-459		Hex Scr. 3/8-24 x 1.50" Lg. H.T.		92	738-140		Shoulder Scr. .437" Dia. x .180	
39	736-217		L-Wash 3/8" Scr. Heavy Duty		93	738-141		Shoulder Scr. .437" Dia. x .350	
40	10769		Blade Adapter Kit		94	736-160		Fl-Wash. .531 x .930 O.D.	
41	710-209		Hex Sems Scr. 3/8-16 x .62" Lg.*		95	10970		Lower Handle	
42	10937		Wheel Pivot Bar		96	746-128		Cable Clip	
43	736-105		Belleville Wash.		97	710-405		Curved Carriage Bolt 5/16-18 x 1.75" Lg.	
44	9392—514		Front Wheel Ass'y.—Comp.		98	710-407		Slot Hex Hd. Self Extr. Scr. #8-32 x .50" Lg.*	
45	11679—458		Chute Deflector Ass'y.—Comp.		99	9966		Handle Knob Ass'y.	
46	711-555		Pivot Pin		100	11611		Throttle Control Ass'y.—Comp.	
47	11130—458		Adapter Plate		101	10641		Index Plate Ass'y.—L.H.	
48	726-106		Push Nut 1/4" Rod		102	710-407		Slot Hex Hd. Self Extr. Scr. #8-32 x .50" Lg.*	
49	732-253		Torsion Spring		103	11606—458		Handle Panel	
50	11141—458		Chute Deflector Ass'y.		104	10011		Upper Handle	
51	731-124		Hub Cap		105	718-144		Grip	
52	738-102		Shoulder Scr. .498" Dia. x 1.450		106	7470		Throttle Control—Knob	
53	7006		Fortiflex Bearing		107	11598		Throttle Control Ass'y.	
54	712-116		Hex Ins. L-Nut 3/8-24 Thd.		108	746-231		Conduit and Wire	
55	736-219		Belleville Wash.						

\*For faster service obtain standard nuts and bolts locally. If these items cannot be obtained locally, order by part number and size as shown on the parts list.

(458 Arctic Blue)

When ordering parts, if color or finish is important use the appropriate color code shown above (e.g. Arctic Blue Finish, 11427(458)).

The engine is not under warranty by the mower manufacturer. If repairs or service is needed on the engine, please contact your nearest authorized engine service outlet. Check the "Yellow Pages" of your telephone book under "Engines—Gasoline."



# PARTS INFORMATION

**DEFECTIVE OR MISSING PARTS** must be reported to the factory immediately. Such claims must include your model number and date of purchase.

## POWER EQUIPMENT PARTS AND SERVICE

Parts and service for all MTD manufactured power equipment are available through the authorized service firms listed below. All orders should specify the model number of your unit, parts numbers, description of parts and the quantity of each part required.

**A 1 Engine & Mower Co.**  
327 East 9th Street  
Salt Lake City, Utah 84102

**American Electric Ignition Co.**  
124 N.W. 8th Street  
Oklahoma City, Oklahoma 73102

**Auto Electric & Carburetor Co.**  
2525 4th Avenue, S.  
P. O. Box 1948  
Birmingham, Alabama 35233

**Automotive Equipment Service Co.**  
3117 Holmes Street  
Kansas City, Missouri 64109

**Bailey's Rebuild Inc.**  
1325 E. Madison Street  
Seattle Washington 98102

**Bleckie, Inc.**  
7900 Lorain Avenue  
Cleveland, Ohio 44102

**Brown Equipment Distributor Inc.**  
110 Beech Street  
Corydon, Indiana 47112

**Bullard Supply**  
2409 Commerce Street  
Houston, Texas 77003

**Carl A. Anderson Co.**  
623 S. 16th Street  
Omaha, Nebraska 68102

**Catto & Putty, Inc.**  
P. O. Box 2408  
510 Soledad Street  
San Antonio, Texas 78205

**Center Supply Company**  
6867 New Hampshire Avenue  
Takoma Park, Maryland 20012

**Dixie Sales Company**  
P. O. Box 1408  
327 Battleground Avenue  
Greensboro, North Carolina 27402

**East Point Cycle & Key Shop**  
1617 Whiteway  
East Point, Georgia 30044

**Gamble Distributors**  
West End Avenue  
Carthage, New York 13619

**Garden Equipment Co., Inc.**  
6600 Cherry Avenue  
Long Beach, California 90805

**Gardenville Supply, Inc.**  
Pipersville, Pennsylvania 18947

**Henry W. O'Neil & Assoc., Inc.**  
410 North Goodman Street  
Rochester, New York 14609

**Henzler, Inc.**  
2015 Lemay Ferry Road  
St. Louis, Missouri 63125

**Kenton Supply**  
8216 North Denver Avenue  
Portland, Oregon 97217

**Kimber's Inc.**  
115 W. Geddes St.  
Syracuse, New York 13204

**The Lawnmower Shop**  
1340 El Camino Real  
San Carlos, California 94070

**Marr Brothers**  
423 E. Jefferson  
Dallas, Texas 75203

**Mathews Auto Electric Co.**  
420 East 2nd Street  
Tulsa Oklahoma 74120

**McClure Lawn & Garden Supply**  
1114 Lexington Avenue  
Mansfield, Ohio 44907

**Memphis Cycle & Supply Co.**  
421 Monroe Avenue  
Memphis Tennessee 38103

**Morton B. Collins Co.**  
300 Birnie Avenue  
Springfield, Massachusetts 01107

**Mox-All of Florida, Inc.**  
365 Greco Avenue  
Coral Gables, Florida 33146

## BRIGGS & STRATTON, TECUMSEH AND PEERLESS PARTS AND SERVICE

Briggs & Stratton, Tecumseh and Peerless parts and service should be handled by your nearest authorized engine service firm. Check the yellow pages of your telephone directory under the listing *Engines - Gasoline*, Briggs & Stratton or Tecumseh Lauson - Power Products.

**National Central, Div. of**  
Joe Sterling, Inc.  
Drawer "D" 687 Seville Rd.  
Wadsworth, Ohio 44281

**Parts & Sales Inc.**  
2101 Industrial Pkwy.  
Elkhart, Indiana 46514

**Power Equipment Distributor**  
36463 So. Gratiot Avenue  
Mt. Clemens, Michigan 48043

**Power Lawn & Garden Equip. Co.**  
2551-2571 J. F. Kennedy Road  
Dubuque, Iowa 52001

**Radco Distributors**  
2403 Market Street  
P. O. Box 3216  
Jacksonville, Florida 32206

**Raub Supply Company**  
James & Mulberry Sts.  
Lancaster, Pennsylvania 17604

**Richmond Battery & Ignition**  
P. O. Box 25369 - 957 Myers St.  
Richmond, Virginia 23260

**Smith Hardware Company**  
515 N. George Street  
Goldsboro, North Carolina 27530

**South Denver Lawn Equip. Co.**  
527 West Evans  
Denver, Colorado 80223

**Suhren Engine**  
8330 Earhart Blvd.  
New Orleans, Louisiana 70118

**Sutton's Lawn Mower Shop**  
Route 4, Box 343  
North Little Rock, Arkansas 72117

**Warner Equipment**  
7520 Lyndale Avenue, So.  
Minneapolis, Minnesota 55423

**Woodson Sales & Service**  
1702 North Sylvania  
Ft. Worth, Texas 76111

## WARRANTY PARTS AND SERVICE POLICY

The purpose of warranty is to protect the customer from defects in workmanship and materials, defects which are NOT detected at the time of manufacture. It does not provide for the unlimited and unrestricted replacement of parts. Use and maintenance are the responsibility of the customer. The manufacturer cannot assume responsibility for conditions over which it has no control. Simply put, if it's the manufacturer's fault, it's the manufacturer's responsibility; if it's the customer's fault, it's the customer's responsibility.

### CLAIMS AGAINST THE MANUFACTURER'S WARRANTY INCLUDES

1. Replacement of Missing Parts on new equipment.
2. Replacement of Defective Parts within the warranty period.
3. Repair of Defects within the warranty period.

All claims MUST be substantiated with the following information:

1. Model Number of unit involved.
2. Date unit was purchased or first put into service.
3. Date of failure.
4. Nature of failure.