

Operating/Service Instructions

SELF-PROPELLED ROTARY MOWER IMPORTANT

MODEL NOS.
123-290 (RECOIL START)
123-295 (ELECTRIC START)

SAFE OPERATION PRACTICES FOR WALK-BEHIND MOWERS

TRAINING

1. Read the Operating and Service Instruction Manual carefully. Be thoroughly familiar with the controls and the proper use of the equipment.
2. Never allow children to operate a power mower.
3. Keep the area of operation clear of all persons, particularly small children, and pets.
5. If the equipment should start to vibrate abnormally, stop the engine (motor) and check immediately for the cause. Vibration is generally a warning of trouble.
6. Stop the engine (motor) whenever you leave the equipment, before cleaning the mower housing, and when making any repairs or inspections.

PREPARATION

1. Thoroughly inspect the area where the equipment is to be used and remove all stones, sticks, wire, bones and other foreign objects.
2. Do not operate equipment when barefoot or wearing open sandals. Always wear substantial footwear.
3. Check the fuel before starting the engine. Do not fill the gasoline tank indoors, when the engine is running, or while the engine is still hot. Wipe off any spilled gasoline before starting the engine.
4. Disengage the self-propelled mechanism or drive clutch on units so equipped before starting the engine (motor).
5. Never attempt to make a wheel adjustment while the engine (motor) is running.
6. Mow only in daylight or in good artificial light.
7. Never operate the equipment in wet grass. Always be sure of your footing; keep a firm hold on the handle and walk, never run.
7. When cleaning, repairing or inspecting, make certain the blade and all moving parts have stopped. Disconnect the spark plug wire, and keep the wire away from the plug to prevent accidental starting.
8. Do not run the engine indoors.
9. Shut the engine (motor) off and wait until the blade comes to a complete stop before removing the grass catcher or unclogging chute.
10. Mow across the face of slopes, never up-and-down. Exercise extreme caution when changing direction on slopes. Do not mow excessively steep slopes.
11. Always disconnect electric mowers (line operated) before cleaning, repairing or adjusting.
12. Never operate mower without proper guards, plates or other safety protective devices in place.
13. Keep washout ports and other mower-housing service openings closed when mowing.

OPERATION

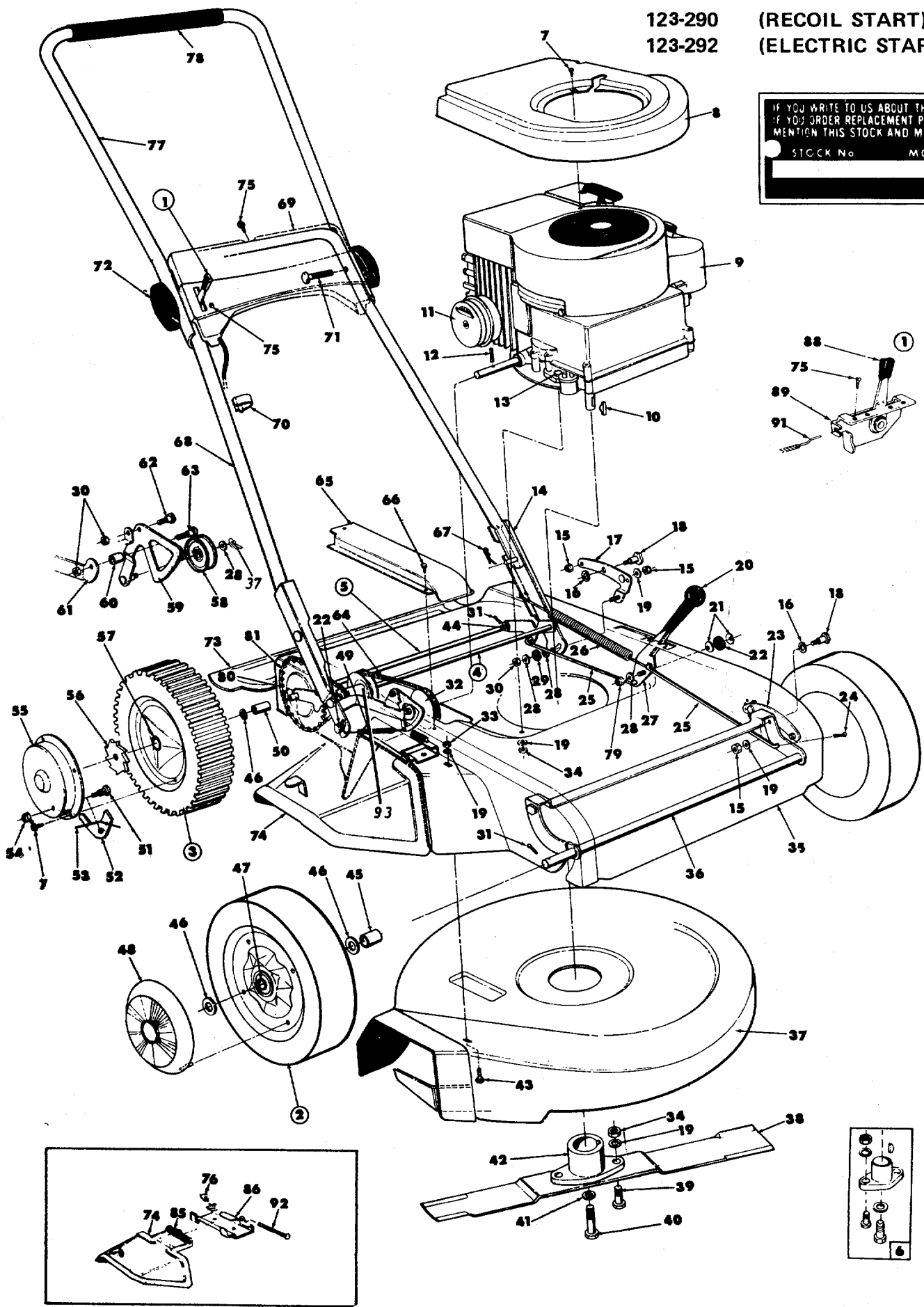
1. Do not change the engine governor settings or overspeed the engine.
2. Do not put hands or feet near or under rotating parts. Keep clear of the discharge opening at all times.
3. Stop the blade(s) when crossing gravel drive, walks or roads.
4. After striking a foreign object, stop the engine (motor), remove the wire from spark plug, thoroughly inspect the mower for any damage, and repair the damage before restarting and operating the mower.
5. Check the blade and the engine mounting bolts at frequent intervals for proper tightness.
5. Check the grass catcher bags frequently for wear or deterioration. Replace with new bags for safety protection.

MAINTENANCE AND STORAGE

123-290
123-292

(RECOIL START)
(ELECTRIC START)

IF YOU WRITE TO US ABOUT THIS ARTICLE OR
IF YOU ORDER REPLACEMENT PARTS ALWAYS
MENTION THIS STOCK AND MODEL NUMBER
STOCK No. MODEL No.



PARTS LIST FOR MODEL NO. 123-290 AND 123-295

Ref. No.	Part No.	Color Code	Description	New Part	Ref. No.	Part No.	Color Code	Description	New Part
1	11611		Throttle Control Assembly—Complete		46	736-160		Flat Washer	
2	9383-513		Front Wheel Assembly—Complete		47	741-114		Ball Bearing—Front Wheel	
3	734-538		Rear Wheel Assembly—Complete	N	48	9871		Hub Cap—Front Wheel	
4	11900		Rear Axle Assembly	N	49	732-265		Spring	N
5	11866		Rear Shaft Assembly		50	750-190		Rear Wheel Spacer	
6	10769		Blade Adapter Kit		51	738-137		Shoulder Bolt—Special	
7	710-407		Slotted Hex Washer Hd. Ext. Scw. #8—32 x 1 1/2" Lg.		52	748-188		Pawl—Rear Wheel	
8	10612-452		Engine Shroud (123-290)		53	10622		Nylon Spring	
9	—		Engine Shroud (123-295)		54	712-219		Hex Elastic Stopnut 1/4—20 Thd.	
10	714-365		Key Hi Pro #505		55	10647		Hub Cap—Rear Wheel	
11	9278		Exhaust Deflector		56	748-187		Ratchet—Rear Wheel	
12	715-105		Spirol Pin 3/8" Dia. x 1 1/2" Lg.		57	748-125		Sintered Bearing—Rear Wheel	
13	710-158		Hex Hd. Cap Scw. 3/8—24 x 1 1/4" Lg. *		58	756-192		Idler Bearing	N
14	10623		Left Hand Pivot Arm Assembly		59	11920		Cam	N
15	712-798		Hex Nut 3/8—16 Thd.		60	750-122		Sleeve	
16	736-159		Flat Washer		61	10650		Pivot Arm Assembly—Right Hand	
17	10656		Rear Height Pivot Bracket Assembly		62	738-140		Shoulder Bolt—Special	
18	738-149		Shoulder Bolt—Special		63	738-141		Shoulder Bolt—Special	
19	736-119		Spring Lockwasher 3/8 Screw *		64	754-114		"V"—Belt—1/2 x 24" Lg.	
20	720-143		Grip — Height Adjuster		65	10635-458		Belt Guard Cover	
21	736-105		Belleville Washer		66	710-224		Hex Hd. Self Tap Scw. #10 x 1/2" Lg. *	
22	735-126		Rubber Washer		67	714-104		Hairpin Cotter	
23	10658		Front Height Pivot Bracket Assembly		68	10970		Lower Handle	
24	714-507		Cotter Pin 3/8 x 3/4" Lg. *		69	11606-458		Handle Panel (123-290)	
25	10080		Rod—Height Adjuster 3/8 Thd. *			11607-458		Handle Panel (123-295)	
26	732-153		Spring 8.65" Lg.		70	746-128		Cable Clip	
27	10666		Height Grip Assembly		71	710-405		Curved Hd. Scw. 3/8—18 x 1 3/4" Lg. *	
28	736-160		Flat Washer *		72	9966		Knob—Handle Assembly	
29	735-127		Rubber Washer		73	12251-458		Protective Shield Assembly—Complete	N
30	712-158		Hex Center Lock Nut 3/8—18 Thd. *		74	11141-458		Chute Deflector	
31	714-115		Cotter Pin 1/8" Dia. x 1" Lg. *		75	710-407		Slotted Hex Washer Hd. Ext. Scw. #8—32 x 1/2" Lg.	
32	756-115		Pulley—For P.T.O.		76	726-106		Push-On Flange Palnut	
33	712-267		Hex Nut 3/8—18 Thd. *		77	10011		Upper—Handle	
34	712-123		Hex Nut 3/8—24 Thd. *		78	718-144		Grip	
35	11428-458		Frame		79	712-711		Hex Jam Nut 3/8—24 Thd.	
36	10662		Front Axle Assembly		80	713-144		Roller Chain # 48 x 15.50" Lg.	
37	11425-458		Lower Deck Assembly		81	713-122		Master Link for #48 Chain	
38	742-124		Blade—21 inch		85	732-253		Torsion Spring	
39	710-117		Hex Hd. Cap Scw. 3/8—24 x 1" Lg. Heat Treated		86	11130-458		Adapter Plate	
40	710-459		Hex Hd. Cap Scw. 3/8—24 x 1 1/2" Lg. Heat Treated		87	7299		Oil Fill Trough (Not Shown)	
41	736-217		Spring Lockwasher 3/8 Scw. Heavy Duty		88	7470		Throttle Control—Knob	
42	10769		Blade Adapter Kit		89	11598		Throttle Control Assembly	
43	710-260		Carriage Bolt 3/8—18 x 5/8" Lg. *		90	710-513		Hex Hd. Cap Scr. 1/4—28 x .50" Lg.	
44	748-142		Flange Bearing—Rear		91	732-144		Conduit and Wire	
45	748-190		Front Wheel Spacer		92	711-555		Pivot Pin	
					93	756-191		Pulley with Sprocket	N
						11679-458		Chute Deflector Assembly—Complete (Includes Ref. No's. 74, 76, 85, 86 & 92)	N

* For faster service, obtain standard nuts, bolts and washers locally. If these items cannot be obtained locally, order by part number and size as shown on the parts list.

458 Arctic Blue

When ordering parts, if color or finish is important, use the appropriate color code shown above (e.g. Arctic Blue Finish, 11428 (458)).

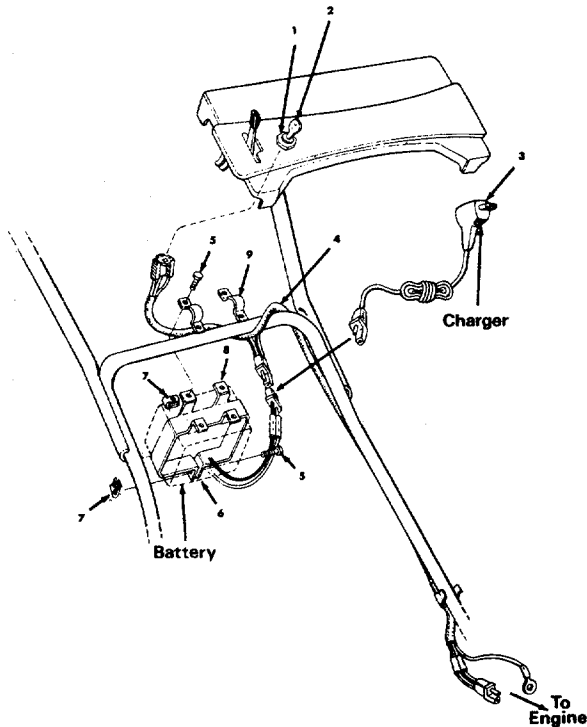
ASSEMBLY INSTRUCTIONS

Electric Start Models Only.

After unfolding the handle follow these steps.

The battery has been installed at the factory for you.

1. Plug the cord from the engine to the power outlet on the battery.
2. Plug the three hole socket into the switch on the handle panel.
3. It is not necessary to unplug or remove the battery from the lawn mower when charging the battery.
4. The battery must be charged 14-16 hours prior to initial use.



NOTE: This instruction manual covers various models and all accessories shown do not necessarily apply to your model mower.

The engine is NOT under warranty by the mower manufacturer.

Find us fast in the



If repairs or service is needed on the engine, please contact your nearest authorized engine service outlet. Check the "Yellow Pages" of your telephone book under "Engines—Gasoline."

Parts List for Model 123-295 Electrical System

Ref. No.	Part No.	DESCRIPTION () Number Req'd.
1	725-267	Ignition Switch
2	725-201	Ignition Key
3	725-304	G.E. Charger (#49B111LD03)
4	725-305	Wire Harness
5	710-429	Hex-B-Tapping Scw #10 Thd. x .38" Lg. (5)
6	725-303	Battery G.E. Model (41B906LD02-G2)
7	712-344	Speed Nut #10Z (5)
8	11638	Battery Holder Assembly
9	11618	Clamp (2)

BATTERY CARE

1. To completely charge a discharged battery it takes 14 - 16 hours.
2. Recharge on ordinary 110-120 Volt, 60 cycle house current.
3. Battery may be recharged on lawn mower or removed if more convenient.
4. Charger will not overcharge or damage battery if left on for an extended period.
5. ALWAYS REMOVE THE CHARGER PLUG FROM THE BATTERY BEFORE REMOVING THE CHARGER FROM THE HOUSE CURRENT.
6. REMOVE IGNITION KEY AND KEEP IN A DIFFERENT LOCATION WHENEVER LAWN MOWER IS NOT IN USE TO PREVENT ACCIDENTAL STARTING.

ASSEMBLY INSTRUCTIONS

HANDLE ASSEMBLY ON RECOIL START MODELS ONLY

1. Remove the loose hardware from the assembly pack. You will need a screw driver and a $\frac{5}{16}$ " wrench, either a socket as shown in figure 1 or an open end wrench.
2. Assemble the lower handle to the handle brackets as shown in figure 2.
3. Secure the handle with cotter hairpins on both sides. See figure 2.
4. Place the handle panel over the lower handle and fasten with the handle panel screw using a $\frac{5}{16}$ " wrench. See figure 3.
5. Place the upper handle over the lower handle and line up the holes as shown in figure 4.
6. Insert the curved head bolt from the inside and tighten the knob by hand. See figure 4.
7. Place the throttle control in the handle panel and assemble it with the two throttle screws using a screw driver. See figure 5.
8. Use the cable clip to fasten the throttle control wire to the lower handle.

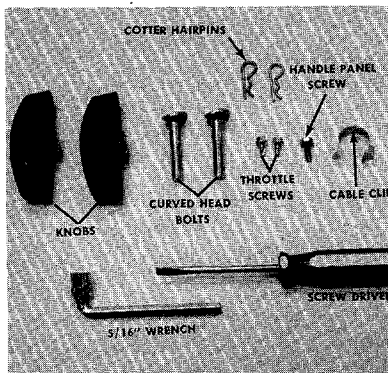


FIGURE 1. LOOSE HARDWARE AND TOOLS

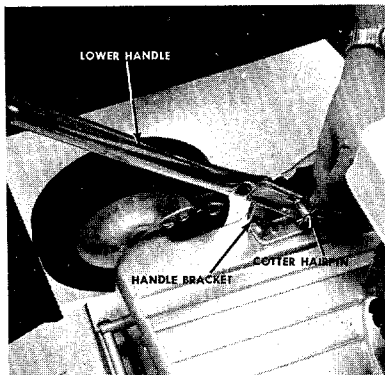


FIGURE 2. LOWER HANDLE ASSEMBLY

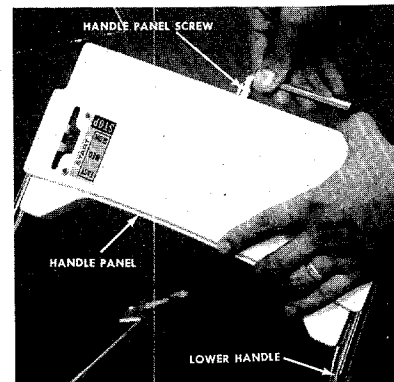


FIGURE 3. HANDLE PANEL ASSEMBLY

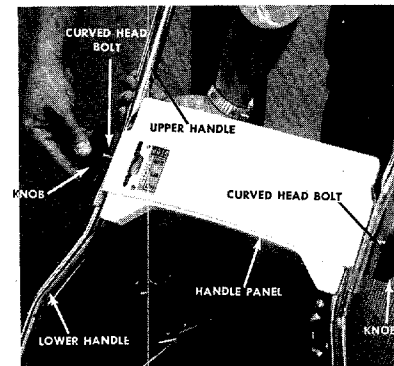


FIGURE 4. UPPER HANDLE ASSEMBLY

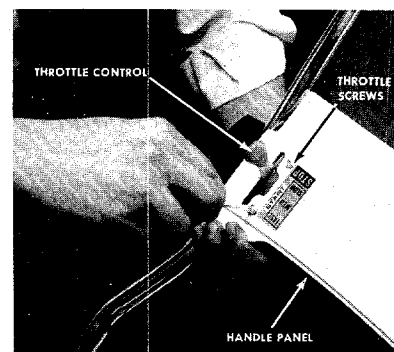


FIGURE 5. THROTTLE CONTROL ASSEMBLY

OPERATION

1. Service engine with gas and oil. See engine manual packed with lawn mower for complete instructions for care and maintenance of engine. READ DIRECTIONS CAREFULLY.
2. To disconnect the power to the rear drive wheels so the mower can be pushed by hand, depress the handle.
To engage the drive wheels, lift the handle.
3. When turning the mower depress the handle and raise the front wheels, and pivot on the rear wheels. The differential action of the rear axle allows the wheels to turn independently on turns and allows both wheels to drive when the handle is in the UP position.

START ENGINE

With the throttle lever conveniently mounted on the handle, start, fast, slow and stopping of the engine is conveniently controlled with one lever.

After the engine has been properly fueled and oiled (refer to engine operating and maintenance instructions), start engine in the following manner.

RECOIL STARTER

1. Move throttle control lever to START position.
2. Crank engine. Pull recoil with a quick firm pull. Do not pull out so far that rope stops with a jerk as this will cause rope failure. Do not allow rope and handle to snap back into place.
3. After two or three full firm pulls on recoil (or as soon as engine fires), move speed control to run position.
4. Operate a new engine at intermediate speeds and light load for the first few hours as you would a new automotive engine.
5. To stop engine, move speed control lever to stop position.
6. If carburetor needs adjustment to start or for operation, see "Carburetor Readjustment" section.

ELECTRIC START

1. Move throttle control to start position.
2. Insert the key and turn clockwise until the engine starts.
3. To start the engine manually, remove the plastic cap from the flywheel, wrap a short piece of rope around the starter pulley, set the throttle control in the start position and pull the rope to start.
4. Operate a new engine at intermediate speeds and light load for the first few hours as you would a new automotive engine.
5. To stop engine, move speed control lever to stop position.
6. If carburetor needs readjustment to start or for operation, see "Carburetor Readjustment" section.

NOTE: A brief break-in period is essential to insure maximum engine life. This consists of running the engine at half-speed for a period of time required to use one tank of gasoline. This is necessary on the initial run only. It is also recommended that the oil be changed after five (5) hours of operation. This allows for the removal of impurities which may have accumulated during the break-in period. Subsequent oil changes should be made as stated in the engine manual. Always check oil before using your mower. Be sure crankcase is full.

ADJUSTMENTS

CAUTION: Do not at any time make any adjustment to lawn mower without first stopping engine and disconnecting spark plug wire.

1. **CUTTING HEIGHT** — This mower can be adjusted for seven cutting heights from 1" to 3". To change the height, move the height adjustment lever away from the engine and forward to lower the cutting height and move to rear to raise the cutting height. The one lever adjusts all four wheels at the same time.



2. **BELT** — The belt requires no adjustment. The idler maintains the proper tension on the belt at all times.
3. **THROTTLE** — If adjustment becomes necessary, the throttle control wire assembly can be reset as follows:
 - a. Loosen, but do not remove, screw securing throttle control wire assembly at engine.
 - b. Move throttle control lever on handle to "Fast" position.
 - c. Move lever, to which control wire is fastened at engine, to full open position and retighten screw to secure throttle control wire assembly.

USING YOUR ROTARY MOWER

For the best results do not cut wet grass because it tends to stick to the underside of the mower thus preventing, proper discharge of grass clippings. If wet grass must be cut, reduce walking speed to help distribute the clippings more effectively.

New grass should be treated as wet grass, otherwise a normal walking speed is about the right pace for efficient mowing. The best mowing pattern is one that allows the clippings to discharge towards the uncut part of the lawn. This permits recutting of the clippings to further pulverize them. When cutting high weeds, discharge towards cut portion then recut at right angles to first direction.

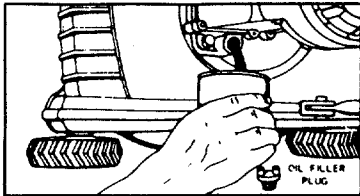
Lawn should be cut in the fall as long as there is growth.

LUBRICATION

Important: Always stop engine and disconnect spark plug wire before cleaning, lubricating or doing any kind of work on lawn mower.

1. **ENGINE** — Follow Engine Manual for lubrication instructions.

NOTE: FILL AND DRAIN OIL FROM OIL FULL PLUG



Always disconnect spark plug cable during repairs, refueling or changing oil.

Engine oil may be drained through oil filler opening by tilting the mower on its side. Change oil after first 5 hours of operation while engine is warm. Thereafter, change oil every 25 hours of operation while engine is warm.

2. **CHAIN** — Lubricate periodically with light engine oil (S.A.E. No. 10 or 20)
3. **CONTROLS** — Lubricate periodically the control assemblies and conduit and wire with light engine oil for ease of operation.
4. **WHEELS** — Lubricate periodically bearings on front wheels with light engine oil. Rear bearings require no lubrication.
5. **PROTECTIVE SHIELD** — The pivot points on the protective shield should be lubricated periodically with oil to prevent any rust or binding.
6. **CHUTE DEFLECTOR** — The torsion spring and pivot point should be lubricated periodically with oil to prevent any rust or binding. Deflector must work freely.

CUTTING BLADE — The blade may easily be removed for grinding or replacement as follows:

1. Remove bolt and lock washer holding blade, and blade adapter to engine crankshaft.
2. Remove blade and blade adapter from engine crankshaft.
3. Remove two bolts, lock washers and nuts holding blade to blade adapter (if necessary).

When sharpening blade, follow the original angle of grind as a guide. It is extremely important that each cutting edge receives an equal amount of grinding to prevent an unbalanced blade. An unbalanced blade will cause excessive vibration when rotating at high speeds and may cause damage to the mower.

Upon reassembly, make certain all parts are assembled properly and tightened securely.

DECK — The underside of mower deck should be cleaned after each period of use as grass clippings, leaves, dirt and other matter will accumulate. This accumulation of grass clippings, etc., is undesirable as it will invite corrosion and may cause an uneven discharge of grass clippings at the next cutting.

The deck may be cleaned by tilting the mower forward or on its side and scraping clean with a suitable tool or washing with a stream of water from a garden hose.

CAUTION: Do not direct the stream of water at a hot engine as damage to the engine may result.

BELT REMOVAL (Refer to drawing on Page 2).

1. Be sure sparkplug wire is removed from spark plug.
2. Remove the belt guard (Ref. No. 65) by removing the two screws on the belt guard.
3. Move the height adjustment lever (Ref. No. 27) to the high position.
4. Place a piece of plastic film under gas cap and tighten it. The plastic prevents gasoline from draining from the air vent in the cap.
5. Place the handle of mower on a table or bench so that the underside of deck is showing.
6. Remove cutting blade (Ref. No. 38) by removing blade bolt (Ref. No. 40).
7. Remove deck (Ref. No. 37) by removing four bolts (Ref. No. 43) NOTE: If you have a grass catcher adapter plate on your unit remove only one bolt, one towards the front wheels.
8. Remove master link (Ref. No. 81) and chain (Ref. No. 80).
9. Remove rear wheel hub cap (Ref. No. 55) from right hand rear wheel only.
10. Remove cotter pin (Ref. No. 31), ratchet (Ref. No. 56) and right hand rear wheel (Ref. No. 3).
11. Remove spring (Ref. No. 49) from cam assembly (Ref. No. 59).
12. Remove shoulder bolt (Ref. No. 18) from rear axle assembly (Ref. No. 4) on the right hand side only.
13. Remove cotter pin (Ref. No. 31) from shaft assembly (Ref. No. 5).
14. Pull idler assembly (Ref. No. 58) toward you and pull belt (Ref. No. 64) over idler.
15. Slide shaft assembly (Ref. No. 5) to the left.
16. Pull belt down past P.T.O. pulley (Ref. No. 32) and over end of rear axle assembly (Ref. No. 4).
17. To replace with new belt, reverse the above steps.

STORAGE

The following steps should be taken to prepare lawn mower for storage.

1. Clean and lubricate mower thoroughly as described in the preceding instructions.
2. Refer to engine manual for correct engine storage instructions.
3. Coat mower's cutting blade with chassis grease to prevent rusting.
4. Store mower in dry, clean area.

GRASS CATCHER Model No. 193-003 is available as optional equipment for the mowers shown in this manual.

WARNING:

1. The mower should not be operated without the entire grass catcher or chute deflector in place.
2. The mower should not be operated without the protective shield on the rear of the deck in place.

NOTE:

Under normal usage bag material is subject to wear and should be checked periodically. Be sure any replacement bag complies with the mower manufacturer's recommendations.

For replacement bags, use only factory authorized replacement bag No. 764-119.

★ IMPORTANT

After striking a foreign object, stop the engine (motor), remove wire from spark plug. Thoroughly inspect the mower for any damage, and repair the damage before restarting and operating the mower.

WARRANTY

For one year from date of purchase, MTD Products Inc will replace for the original purchaser, free of charge, F.O.B. factory or authorized service firm, any part or parts found to be defective in material or workmanship. All transportation charges on parts submitted for replacement under this warranty must be paid by the purchaser. This warranty does not include replacement of parts which become inoperative through misuse, excessive use, accident, neglect, improper maintenance or alterations by unauthorized persons. This warranty does not include the engine, motor, battery, battery charger or any component parts thereof. For service on these units, refer to the applicable manufacturer's warranty.

The above warranty will apply only to the original owner and will be effective only if the warranty card has been properly processed. It will not apply where the unit has been used commercially.

Warranty service is available through your local authorized service dealer or distributor. **UNDER NO CIRCUMSTANCES WILL THE RETURN OF A COMPLETE UNIT BE ACCEPTED BY THE FACTORY UNLESS PRIOR WRITTEN PERMISSION HAS BEEN EXTENDED.**

PARTS INFORMATION

DEFECTIVE OR MISSING PARTS must be reported to the factory immediately. Such claims must include your model number and date of purchase.

MOWER, TILLER, SNOW THROWER, TRACTOR, TRAIL BIKE AND MUD BUG PARTS

Mower, tiller, snow thrower, tractor, trail bike and mud bug parts are available through the authorized service firms listed below. All orders should specify the model number of your unit, parts numbers, de-

scription of parts and the quantity of each part required.

BRIGGS & STRATTON, TECUMSEH AND PEERLESS PARTS AND SERVICE

Briggs & Stratton, Tecumseh and Peerless parts and service should be handled by your nearest authorized engine service firm. Check the yellow pages of your telephone directory under the listing *Engines — Gasoline*, Briggs & Stratton or Tecumseh Lauson — Power Products.

A 1 Engine & Mower Co.

327 East 9th Street
Salt Lake City, Utah 84102

American Electric Ignition Co.

124 N. W. 8th Street
Oklahoma City, Oklahoma 73102

Auto Electric & Carburetor Co.

2625 4th Avenue, S.
P. O. Box 1948
Birmingham, Alabama 35233

Automotive Equipment Service Co.

3117 Holmes Street
Kansas City, Missouri 64109

Bailey's Rebuild Inc.

1325 E. Madison Street
Seattle, Washington 98102

Brown Equipment Distributor Inc.

110 Beech Street
Corydon, Indiana 47112

Bullard Supply

2409 Commerce Street
Houston, Texas 77003

Catto & Putty, Inc.

P. O. Box 2408
510 Soledad Street
San Antonio, Texas 78205

Center Supply Company

6867 New Hampshire Avenue
Takoma Park, Maryland 20012

Charles B. Wright Co.

309 4th Avenue, South
Nashville, Tennessee 37201

W. B. Clements

400 Salem Avenue
Roanoke, Virginia 24016

Morton B. Collins Co.

300 Birnie Avenue
Springfield, Massachusetts 01107

Dixie Sales Company

P. O. Box 1408
327 Battleground Avenue
Greensboro, North Carolina 27402

East Point Cycle & Key Shop

1617 Whiteway
East Point, Georgia 30044

Gamble Distributors

West End Avenue
Carthage, New York 13619

Garden Equipment Co., Inc.

6600 Cherry Avenue
Long Beach, California 90805

Henzler, Inc.

2015 Lemay Ferry Road
St. Louis, Missouri 63125

Frank E. Ives & Son

1101 Lincoln Avenue
Prospect Park, Pennsylvania 19076

J. W. Jewett Co.

981 Folsom Street
San Francisco, California 94107

Kenton Supply

8216 North Denver Avenue
Portland, Oregon 97217

Kimber's Inc.

115 W. Geddes St.
Syracuse, New York 13204

The Lawnmower Shop

1340 El Camino Real
San Carlos, California 94070

Marr Brothers

423 E. Jefferson
Dallas, Texas 75203

Mathews Auto Electric Co.

420 East 2nd Street
Tulsa Oklahoma 74120

McClure Lawn & Garden Supply

1114 Lexington Avenue
Mansfield, Ohio 44907

Memphis Cycle & Supply Co.

421 Monroe Avenue
Memphis Tennessee 38103

Moz-All of Florida, Inc.

365 Greco Avenue
Coral Gables, Florida 33146

National Central, Div. of

Joe Sterling, Inc.
Drawer "D" 687 Seville Rd.
Wadsworth, Ohio 44281

Power Equipment Distributor

36463 So. Gratiot Avenue
Mt. Clemens, Michigan 48043

Parts & Sales Inc.

2101 Industrial Pkwy.
Elkhart, Indiana 46514

Parts & Sales Inc.

335 West St. Charles Road
Villa Park, Illinois 60181

Power Lawn & Garden Equip. Co.

2551-2571 J. F. Kennedy Road
Dubuque, Iowa 52001

Raub Supply Company

James & Mulberry Sts.
Lancaster, Pennsylvania 17604

Radco Distributors

2403 Market Street
P. O. Box 3216
Jacksonville, Florida 32206

Richmond Battery & Ignition

P. O. Box 25369 — 957 Myers St.
Richmond, Virginia 23260

Smith Hardware Company

515 N. George Street
Goldsboro, North Carolina 27530

South Denver Lawn Equip. Co.

527 West Evans
Denver, Colorado 80223

Suhrn Engine

8330 Earhart Blvd.
New Orleans, Louisiana 70118

Sutton's Lawn Mower Shop

Route 4, Box 343
North Little Rock, Arkansas 72117

Warner Equipment

7520 Lyndale Avenue, So.
Minneapolis, Minnesota 55423

WARRANTY PARTS AND SERVICE POLICY

The purpose of warranty is to protect the customer from defects in material and workmanship, defects which are not detected at the time of manufacture.

Our aim is to build into our product quality and reliability. Considerable emphasis is placed on quality control in order to assure our customer of satisfactory product performance. To achieve this goal, it is necessary to gain the cooperation of all concerned, MTD, our sales force and our customers.

MTD's responsibility is to build a quality product and to back up that product. MTD must build this quality product at a competitive price. This cannot be achieved without production in quantity. Quantity production is mass production. In mass production it is always possible for undetected defects to be present when the product reaches the customer. Our warranty is extended to assure the customer that any such defects will be corrected.

Use and maintenance are the responsibility of the customer. MTD cannot assume responsibility for conditions over which it has no control. MTD's responsibility does not cover misuse, excessive use, accident neglect, improper maintenance or alterations by unauthorized persons. Satisfactory product performance can only result when a manufacturer provides and backs up a quality product and the customer follows through with proper use and proper maintenance of that product. When both the manufacturer and the customer recognizes and assumes his responsibility, satisfactory product performance and customer satisfaction are assured.