

MODEL NO.
123-280

SELF-PROPELLED ROTARY MOWER

IMPORTANT

SAFE OPERATION PRACTICES FOR WALK-BEHIND MOWERS

TRAINING

1. Read the Operating and Service Instruction Manual carefully. Be thoroughly familiar with the controls and the proper use of the equipment.
2. Never allow children to operate a power mower.
3. Keep the area of operation clear of all persons, particularly small children, and pets.

PREPARATION

1. Thoroughly inspect the area where the equipment is to be used and remove all stones, sticks, wire, bones and other foreign objects.
2. Do not operate equipment when barefoot or wearing open sandals. Always wear substantial footwear.
3. Check the fuel before starting the engine. Do not fill the gasoline tank indoors, when the engine is running, or while the engine is still hot. Wipe off any spilled gasoline before starting the engine.
4. Disengage the self-propelled mechanism or drive clutch on units so equipped before starting the engine (motor).
5. Never attempt to make a wheel adjustment while the engine (motor) is running.
6. Mow only in daylight or in good artificial light.
7. Never operate the equipment in wet grass. Always be sure of your footing; keep a firm hold on the handle and walk, never run.

OPERATION

1. Do not change the engine governor settings or overspeed the engine.
2. Do not put hands or feet near or under rotating parts. Keep clear of the discharge opening at all times.
3. Stop the blade(s) when crossing gravel drive, walks or roads.
4. After striking a foreign object, stop the engine (motor), remove the wire from spark plug, thoroughly inspect the mower for any damage, and repair the damage before restarting and operating the mower.

5. If the equipment should start to vibrate abnormally, stop the engine (motor) and check immediately for the cause. Vibration is generally a warning of trouble.
6. Stop the engine (motor) whenever you leave the equipment, before cleaning the mower housing, and when making any repairs or inspections.
7. When cleaning, repairing or inspecting, make certain the blade and all moving parts have stopped. Disconnect the spark plug wire, and keep the wire away from the plug to prevent accidental starting.
8. Do not run the engine indoors.
9. Shut the engine (motor) off and wait until the blade comes to a complete stop before removing the grass catcher or unclogging chute.
10. Mow across the face of slopes, never up-and-down. Exercise extreme caution when changing direction on slopes. Do not mow excessively steep slopes.
11. Always disconnect electric mowers (line operated) before cleaning, repairing or adjusting.
12. Never operate mower without proper guards, plates or other safety protective devices in place.
13. Keep washout ports and other mower-housing service openings closed when mowing.

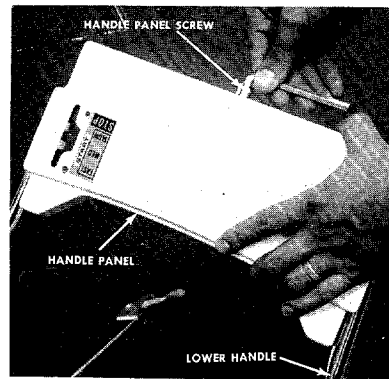
MAINTENANCE AND STORAGE

1. Check the blade and the engine mounting bolts at frequent intervals for proper tightness.
2. Keep all nuts, bolts, and screws tight to be sure the equipment is in safe working condition.
3. Never store the equipment with gasoline in the tank inside of a building where fumes may reach an open flame or spark. Allow the engine to cool before storing in any enclosure.
4. To reduce fire hazard, keep the engine free of grass, leaves, or excessive grease.
5. Check the grass catcher bags frequently for wear or deterioration. Replace with new bags for safety protection.

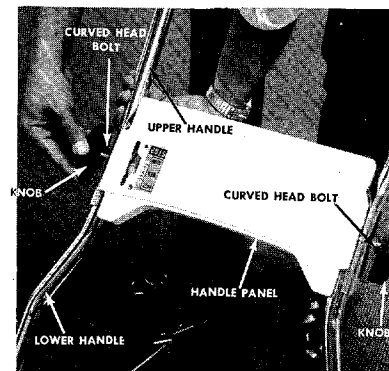
ASSEMBLY INSTRUCTIONS

HANDLE ASSEMBLY

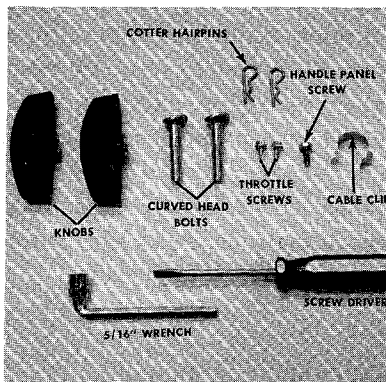
1. Remove the loose hardware from the assembly pack. You will need a screwdriver and a 5/16" wrench, either a socket as shown in figure 1 or an open end wrench.
2. Assemble the lower handle to the handle brackets as shown in figure 2.
3. Secure the handle with cotter hairpins on both sides. See figure 2.
4. Place the handle panel over the lower handle and fasten with the handle panel screw using a 5/16" wrench. See figure 3.
5. Place the upper handle over the lower handle and line up the holes as shown in figure 4.
6. Insert the curved head bolt from the inside and tighten the knob by hand. See figure 4.
7. Place the throttle control in the handle panel and assemble it with the two throttle screws using a screwdriver. See figure 5.
8. Use the cable clip to fasten the throttle control wire to the lower handle.



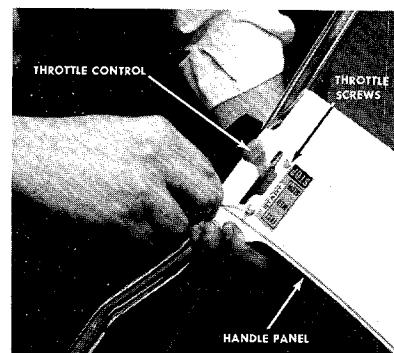
**FIGURE 3.
HANDLE PANEL ASSEMBLY**



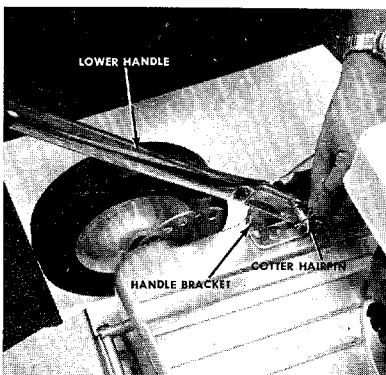
**FIGURE 4.
UPPER HANDLE ASSEMBLY**



**FIGURE 1.
LOOSE HARDWARE AND TOOLS**



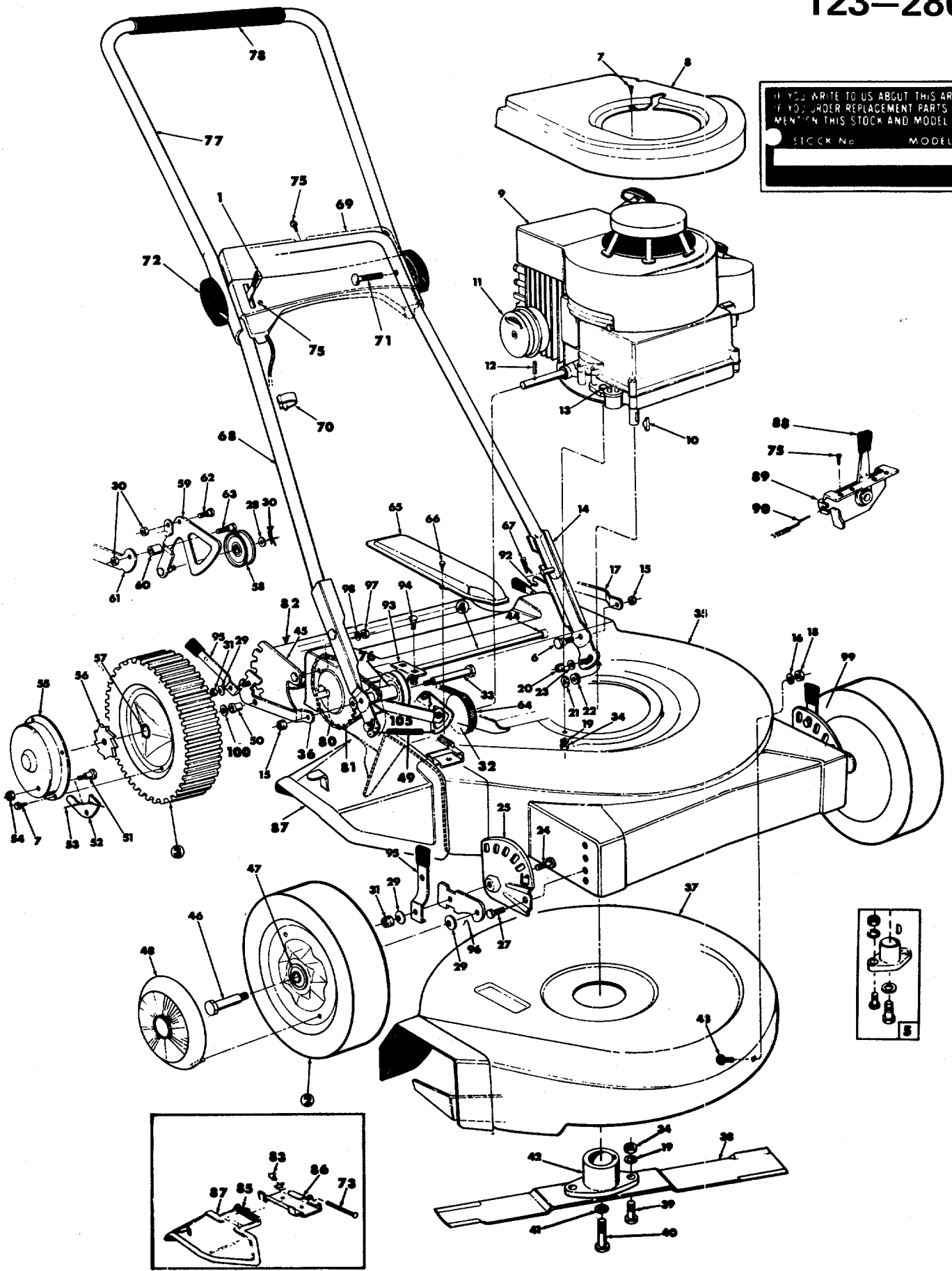
**FIGURE 5.
THROTTLE CONTROL ASSEMBLY**



**FIGURE 2.
LOWER HANDLE ASSEMBLY**

123-280

IF YOU WRITE TO US ABOUT THIS ARTICLE OR
IF YOU ORDER REPLACEMENT PARTS ALWAYS
MENTION THIS STOCK AND MODEL NUMBER
STOCK No. MODEL No.



PARTS LIST FOR MODEL NO. 123-280

| REF. NO. | PART NO. | COLOR CODE | DESCRIPTION | NEW PART |
|----------|-----------|------------|---|----------|
| 1 | 11611 | | Throttle Control Assembly Complete | N |
| 2 | 9392-513 | | Front Wheel Assembly Complete | |
| 3 | 734-538 | | Rear Wheel Assembly Complete | |
| 4 | 10646 | | Rear Axle Assembly Complete | |
| 5 | 10769 | | Blade Adapter Kit | |
| 6 | 738-149 | | Shoulder Bolt – Special | |
| 7 | 710-407 | | Slotted Hex Washer Ext. Scr. No. 8-32 x 1/2" lg. | |
| 8 | 10611 | | Engine Shroud | |
| 9 | ----- | | Engine | |
| 10 | 714-365 | | Key Hi Pro No. 505 | |
| 11 | 9278 | | Exhaust Deflector | |
| 12 | 715-105 | | Spirol Pin 3/16" Dia. x 1-1/2" lg. | |
| 13 | 710-158 | | Hex Hd. Cap Scr. 5/16-24 x 1-1/4" lg. * | |
| 14 | 10623 | | Left Hand – Handle Extension Assembly | |
| 15 | 712-267 | | Hex Elastic Stopnut 5/16-18 Thd. | |
| 16 | 736-119 | | Spring Lockwasher 5/16 Scr. * | |
| 17 | 10638 | | Rear Height Pivot Bracket Ass'y. – L.H. | |
| 18 | 712-267 | | Hex Nut 5/16-18 Thd. * | |
| 19 | 736-119 | | Spring Lockwasher 5/16 Scr. * | |
| 20 | 712-158 | | Hex Center Locknut 5/16 Thd. | |
| 21 | 736-159 | | Flat Washer 5/16 I.D. * | |
| 22 | 736-155 | | Rubber Washer | |
| 23 | 736-159 | | Flat Washer 5/16 I.D. * | |
| 24 | 711-498 | | Weld Bolt – Special | |
| 25 | 10934 | | Index Plate Assembly – R.H. – Front | |
| 26 | 10951 | | Height Adjuster Assembly Complete – R.H. | |
| 27 | 710-209 | | Sems Hex Hd. Cap Scr. 3/8-16 x 5/8" lg. * | |
| 28 | 736-160 | | Flat Washer - .500 I.D. x .931 O.D. x .05 | |
| 29 | 736-105 | | Belleville Washer | |
| 30 | 714-115 | | Cotter Pin 1/8" Dia. x 1" lg. * | |
| 31 | 712-116 | | Elastic Locknut 3/8-24 Thd. | |
| 32 | 756-115 | | Pulley – For P.T.O. | |
| 33 | 738-136 | | Shoulder Bolt Special | |
| 34 | 712-123 | | Hex Nut 5/16-24 Thd. * | |
| 35 | 11427-458 | | Upper Deck Assembly | |
| 36 | 10639 | | Rear Height Pivot Bracket Assembly – R.H. | |
| 37 | 11425-458 | | Lower Deck Assembly | |
| 38 | 742-124 | | Blade 21 Inch | |
| 39 | 710-117 | | Hex Hd. Cap Scr. 5/16-24 x 1" lg. Heat Treated | |
| 40 | 710-459 | | Hex Hd. Cap Scr. 3/8-24 x 1-1/2" lg. Heat Treated | |

PARTS LIST FOR MODEL NO. 123-280

| REF. NO. | PART NO. | COLOR CODE | DESCRIPTION | NEW PART |
|----------|-----------|------------|---|----------|
| 41 | 736-217 | | Spring Lock Washer 3/8 Scr. Heavy Duty | |
| 42 | 10769 | | Blade Adapter Kit | |
| 43 | 710-260 | | Carriage Bolt 5/16-18 x 5/8" lg. * | |
| 44 | 748-141 | | Sleeve Bearing | |
| 45 | 10642 | | Index Plate Assembly - Rear - R.H. | |
| 46 | 738-102 | | Axle Bolt - Front Wheel | |
| 47 | 7006 | | Fortiflex Bearing - Front Wheel | |
| 48 | 9871 | | Hub Cap - Front Wheel | |
| 49 | 732-265 | | Spring | N |
| 50 | 748-142 | | Flange Bearing | |
| 51 | 738-137 | | Shoulder Bolt - Special | |
| 52 | 748-188 | | Pawl - Rear Wheel | |
| 53 | 10622 | | Nylon Spring | |
| 54 | 712-267 | | Hex Elastic Stopnut 5/16-18 Thd. | |
| 55 | 10647 | | Hub Cap - Rear Wheel | |
| 56 | 748-187 | | Ratchet - Rear Wheel | |
| 57 | 748-125 | | Sintered Bearing - Rear Wheel | |
| 58 | 756-192 | | Idler Pulley | N |
| 59 | 11920 | | Cam Assembly | N |
| 60 | 750-122 | | Sleeve | |
| 61 | 10650 | | Pivot Arm Assembly | |
| 62 | 738-140 | | Shoulder Bolt - Special | |
| 63 | 738-141 | | Shoulder Bolt - Special | |
| 64 | 754-114 | | "V" Belt 1/2 x 24" lg. | |
| 65 | 10645-458 | | Belt Guard Cover | |
| 66 | 710-224 | | Hex Hd. Self Tap Scr.No. 10 x 1/2" lg. * | |
| 67 | 714-104 | | Hair Pin Cotter | |
| 68 | 10970 | | Lower Handle | |
| 69 | 11606-458 | | Handle Panel | |
| 70 | 746-128 | | Cable Clip | |
| 71 | 710-405 | | Curved Hd. Scr.5/16-18 x 1-3/4" lg. | |
| 72 | 9966 | | Knob - Handle Assembly | |
| 73 | 711-555 | | Pivot Pin | |
| 75 | 710-407 | | Slotted Hex Washer Hd. Ext.Scr.No.8-32 x 1/2" lg. | |
| 76 | 756-191 | | Split Pulley with Sprocket | N |
| 77 | 10011 | | Upper Handle | |
| 78 | 718-144 | | Grip | |
| 79 | 7299 | | Oil Fill Trough (not shown) | |

PARTS LIST FOR MODEL NO. 123-280

| REF. NO. | PART NO. | COLOR CODE | DESCRIPTION | NEW PART |
|----------|-----------|------------|---|----------|
| 80 | 713-144 | | Roller Chain No. 48-1/2" Pitch 15-1/2" lg. | N |
| 81 | 713-122 | | Master Link No. 48 Chain | |
| 82 | 12250-458 | | Protective Shield Assembly Complete | |
| 83 | 726-106 | | Push-On Flange Palnut | |
| 85 | 732-253 | | Torsion Spring | |
| 86 | 11130 | | Adapter Plate | |
| 87 | 11141-458 | | Chute Deflector | |
| 88 | 7470 | | Throttle Control - Knob | |
| 89 | 11598 | | Throttle Control Assembly | |
| 90 | 732-144 | | Conduit and Wire | |
| 92 | 10641 | | Index Plate Assembly - Rear - L.H. | |
| 93 | 10644 | | Bracket | |
| 94 | 710-260 | | Carriage Bolt 5/16-18 x 5/8" lg. * | |
| 95 | 10530 | | Spring Lever Assembly with Knob | |
| 96 | 10937 | | Pivot Bar - Front Wheel | |
| 97 | 712-267 | | Hex Nut 5/16-18 Thd. * | |
| 98 | 736-119 | | Spring Lockwasher 5/16 Scr. * | |
| 99 | 10950 | | Height Adjuster Assembly Complete - L.H. | |
| 100 | 736-192 | | Flat Washer 1/2" Scr. * | |
| 101 | 736-116 | | Flat Washer used on L.H. Shoulder Bolt Ref. No. 6 (not shown) | |
| 105 | 748-192 | | Spacer for (Ref. 76 Pulley) | |
| 106 | 11679-458 | | Chute Deflector Ass'y. - Complete (Includes Ref. Nos. 73, 83, 85, 86, 87) | |
| 107 | 710-513 | | Hex Hd.Cap Scr. 1/4-28 x .50" lg. (Used to hold on Ref. No. 106 - not shown) | |

*For faster service, obtain standard nuts, bolts and washers locally. If these items cannot be obtained locally, order by part number and size as shown on the parts list.

(458 Arctic Blue)

When ordering parts, if color or finish is important, use the appropriate color code shown above, (e.g. Arctic Blue Finish, 11427(458)).

The engine is not under warranty by the mower manufacturer.

If repairs or service is needed on the engine, please contact your nearest authorized engine service outlet. Check the "Yellow Pages" of your telephone book under "Engines - Gasoline."



START ENGINE

With the throttle control lever conveniently mounted on the handle, start, fast, slow and stopping of the engine is conveniently controlled with one lever.

After the engine has been properly fueled and oiled (Refer to engine operating and maintenance instructions), start engine in the following manner.

RECOIL STARTER

1. Move throttle control lever to "START" position.
2. Crank engine, Pull recoil with a quick firm pull. Do not pull out so far that rope stops with a jerk as this will cause rope failure. Do not allow rope and handle to snap back into place.
3. After two or three full firm pulls on recoil, or as soon as engine fires, move throttle control to run position.
4. Operate a new engine at intermediate speeds and light load for the first few hours as you would a new automotive engine.
5. To stop engine, move speed control lever to stop position.
6. If carburetor needs adjustment to start or for operation, see "Carburetor Readjustment" section.

NOTE: A brief break-in period is essential to insure maximum engine life. This consists of running the engine at half-speed for a period of time required to use one tank of gasoline. This is necessary on the initial run only. It is also recommended that the oil be changed after five (5) hours of operation. This allows for the removal of impurities which may have accumulated during the break-in period. Subsequent oil changes should be made as stated in the engine manual. Always check oil before using your mower. Be sure crankcase is full.

ADJUSTMENTS

CAUTION: Do not at any time make any adjustment to lawn mower without first stopping engine and disconnecting spark plug wire.

1. **CUTTING HEIGHT** — An adjusting plate and thumb lever at each wheel position provides cutting height adjustment. Each adjusting plate has five holes. Height of cut will be changed when the thumb lever is moved from one hole to another. Simply depress thumb lever towards wheel and move wheel and lever assembly to desired position. All wheels must be positioned in relative height of cut position.
2. **BELT** — The belt requires no adjustment. The idler maintains the proper tension on the belt at all times.
3. **THROTTLE** — If adjustment becomes necessary, the throttle control wire assembly can be reset as follows:
 - a. Loosen, but do not remove, screw securing throttle control wire assembly at engine.
 - b. Move throttle control lever on handle to "FAST" position.
 - c. Move lever, to which control wire is fastened at engine, to full open position and retighten screw to secure throttle control wire assembly.

USING YOUR ROTARY MOWER

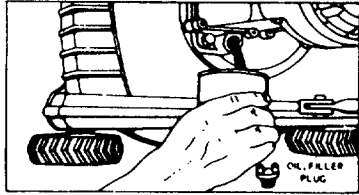
For the best results do not cut wet grass because it tends to stick to the underside of the mower thus preventing proper discharge of grass clippings. If wet grass must be cut, reduce walking speed to help distribute the clippings more effectively.

LUBRICATION

IMPORTANT: Always stop engine and disconnect spark plug wire before cleaning, lubricating or doing any kind of work on lawn mower.

1. **ENGINE** — Follow Engine Manual for lubrication instructions.

NOTE: FILL AND DRAIN OIL FROM OIL FILL PLUG.



Always disconnect spark plug cable during repairs, refueling or changing oil.

Engine oil may be drained through oil filler opening by tilting the mower on its side. Change oil after first 5 hours of operation while engine is warm. Thereafter, change oil every 25 hours of operation while engine is warm.

2. **CHAIN** — Lubricate periodically with light engine oil (S.A.E. No. 10 or 20).
3. **CONTROLS** — Lubricate periodically the control assemblies and conduit wire with light engine oil for ease of operation.
4. **WHEELS** — Lubricate periodically bearings on front wheels with light engine oil. Rear bearings require no lubrication.
5. **PROTECTIVE SHIELD** — The pivot points on the protective shield should be lubricated periodically with oil to prevent any rust or binding.

6. **CHUTE DEFLECTOR** — The torsion spring and pivot point should be lubricated periodically with oil to prevent any rust or binding. Deflector must work freely.

CUTTING BLADE — The blade may easily be removed for grinding or replacement as follows:

1. Remove bolt and lock washer holding blade and blade adapter to engine crankshaft.
2. Remove blade and blade adapter from engine crankshaft.
3. Remove two bolts, lock washers and nuts holding blade to blade adapter (if necessary).

When sharpening blade, follow the original angle of grind as a guide. It is extremely important that each cutting edge receives an equal amount of grinding to prevent an unbalanced blade. An unbalanced blade will cause excessive vibration when rotating at high speeds and may cause damage to the mower.

Upon reassembly, make certain all parts are assembled properly and tightened securely.

DECK — The underside of mower deck should be cleaned after each period of use as grass clippings, leaves, dirt and other matter will accumulate. This accumulation of grass clippings, etc., is undesirable as it will invite corrosion and may cause an uneven discharge of grass clippings at the next cutting.

The deck may be cleaned by tilting the mower forward or on its side and scraping clean with a suitable tool or washing with a stream of water from a garden hose.

CAUTION: Do not direct the stream of water at a hot engine as damage to the engine may result.

BELT REMOVAL (Refer to drawing on page 2).

1. Be sure spark plug wire is removed from spark plug.
2. Remove the belt guard (Ref. No. 65) by removing the two screws on the belt guard.
3. Place a piece of plastic film under gas cap and tighten it. The plastic prevents gasoline from draining from the air vent in the cap.
4. Place the handle of mower on a table or bench so that the underside of deck is showing.
5. Remove cutting blade (Ref. No. 38) by removing blade bolt (Ref. No. 40).
6. Remove deck (Ref. No. 37) by removing four bolts (Ref. No. 43) NOTE: If you have a grass catcher adapter plate on your unit, remove only one bolt, one towards the front wheels.
7. Remove master link (Ref. No. 81) and chain (Ref. No. 80).
8. Remove rear wheel hub cap (Ref. No. 55) from right hand rear wheel only.
9. Remove cotter pin (Ref. No. 79), ratchet (Ref. No. 56) and right hand rear wheel (Ref. No. 3).
10. Remove spring (Ref. No. 49) from cam assembly (Ref. No. 59).
11. Remove hex nut (Ref. No. 15) from rear axle assembly (Ref. No. 4) on the right hand side only.
12. Remove cotter pin (Ref. No. 79) from axle assembly (Ref. No. 4).
13. Pull idler assembly (Ref. No. 58) toward you and pull belt (Ref. No. 64) over idler.
14. Slide axle assembly (Ref. No. 4) to the left.
15. Pull belt down past P.T.O. pulley (Ref. No. 32) and over end of rear axle assembly (Ref. No. 4).
16. To replace with new belt, reverse the above steps.

STORAGE

The following steps should be taken to prepare lawn mower for storage.

1. Clean and lubricate mower thoroughly as described in the preceding instructions.
2. Refer to engine manual for correct engine storage instructions.
3. Coat mower's cutting blade with chassis grease to prevent rusting.
4. Store mower in dry, clean area.

GRASS CATCHER Model No. 193-003 is available as optional equipment for the mowers shown in this manual.

WARNING:

1. The mower should not be operated without the entire grass catcher or chute deflector in place.
2. The mower should not be operated without the protective shield on the rear of the deck in place.

NOTE:

Under normal usage bag material is subject to wear and should be checked periodically. Be sure any replacement bag complies with the mower manufacturer's recommendations.

For replacement bags, use only factory authorized replacement bag No. 764-119.

★ IMPORTANT

After striking a foreign object, stop the engine (motor), remove wire from spark plug. Thoroughly inspect the mower for any damage, and repair the damage before restarting and operating the mower.

WARRANTY

For one year from date of purchase, MTD Products Inc will replace for the original purchaser, free of charge, F.O.B. factory or authorized service firm, any part or parts found to be defective in material or workmanship. All transportation charges on parts submitted for replacement under this warranty must be paid by the purchaser. This warranty does not include replacement of parts which become inoperative through misuse, excessive use, accident, neglect, improper maintenance or alterations by unauthorized persons. This warranty does not include the engine, motor, battery, battery charger or any component parts thereof. For service on these units, refer to the applicable manufacturer's warranty.

The above warranty will apply only to the original owner and will be effective only if the warranty card has been properly processed. It will not apply where the unit has been used commercially.

Warranty service is available through your local authorized service dealer or distributor. **UNDER NO CIRCUMSTANCES WILL THE RETURN OF A COMPLETE UNIT BE ACCEPTED BY THE FACTORY UNLESS PRIOR WRITTEN PERMISSION HAS BEEN EXTENDED.**

PARTS INFORMATION

DEFECTIVE OR MISSING PARTS must be reported to the factory immediately. Such claims must include your model number and date of purchase.

MOWER, TILLER, SNOW THROWER, TRACTOR, TRAIL BIKE AND MUD BUG PARTS

Mower, tiller, snow thrower, tractor, trail bike and mud bug parts are available through the authorized service firms listed below. All orders should specify the model number of your unit, parts numbers, de-

scription of parts and the quantity of each part required.

BRIGGS & STRATTON, TECUMSEH AND PEERLESS PARTS AND SERVICE

Briggs & Stratton, Tecumseh and Peerless parts and service should be handled by your nearest authorized engine service firm. Check the yellow pages of your telephone directory under the listing *Engines — Gasoline*, Briggs & Stratton or Tecumseh Lauson — Power Products.

A 1 Engine & Mower Co.

327 East 9th Street
Salt Lake City, Utah 84102

American Electric Ignition Co.

124 N. W. 8th Street
Oklahoma City, Oklahoma 73102

Auto Electric & Carburetor Co.

2625 4th Avenue, S.
P. O. Box 1948
Birmingham, Alabama 35233

Automotive Equipment Service Co.

3117 Holmes Street
Kansas City, Missouri 64109

Bailey's Rebuild Inc.

1325 E. Madison Street
Seattle, Washington 98102

Brown Equipment Distributor Inc.

110 Beech Street
Corydon, Indiana 47112

Bullard Supply

2409 Commerce Street
Houston, Texas 77003

Catto & Putty, Inc.

P. O. Box 2408
510 Soledad Street
San Antonio, Texas 78205

Center Supply Company

6867 New Hampshire Avenue
Takoma Park, Maryland 20012

Charles B. Wright Co.

309 4th Avenue, South
Nashville, Tennessee 37201

W. B. Clements

400 Salem Avenue
Roanoke, Virginia 24016

Morton B. Collins Co.

300 Birnie Avenue
Springfield, Massachusetts 01107

Dixie Sales Company

P. O. Box 1408
327 Battleground Avenue
Greensboro, North Carolina 27402

East Point Cycle & Key Shop

1617 Whiteway
East Point, Georgia 30044

Gamble Distributors

West End Avenue
Carthage, New York 13619

Garden Equipment Co., Inc.

6600 Cherry Avenue
Long Beach, California 90805

Henzler, Inc.

2015 Lemay Ferry Road
St. Louis, Missouri 63125

Frank E. Ives & Son

1101 Lincoln Avenue
Prospect Park, Pennsylvania 19076

J. W. Jewett Co.

981 Folsom Street
San Francisco, California 94107

Kenton Supply

8216 North Denver Avenue
Portland, Oregon 97217

Kimber's Inc.

115 W. Geddes St.
Syracuse, New York 13204

The Lawnmower Shop

1340 El Camino Real
San Carlos, California 94070

Marr Brothers

423 E. Jefferson
Dallas, Texas 75203

Mathews Auto Electric Co.

420 East 2nd Street
Tulsa Oklahoma 74120

McClure Lawn & Garden Supply

1114 Lexington Avenue
Mansfield, Ohio 44907

Memphis Cycle & Supply Co.

421 Monroe Avenue
Memphis Tennessee 38103

Moz-All of Florida, Inc.

365 Greco Avenue
Coral Gables, Florida 33146

National Central, Div. of

Joe Sterling, Inc.
Drawer "D" 687 Seville Rd.
Wadsworth, Ohio 44281

Power Equipment Distributor

36463 So. Gratiot Avenue
Mt. Clemons, Michigan 48043

Parts & Sales Inc.

2101 Industrial Pkwy.
Elkhart, Indiana 46514

Parts & Sales Inc.

335 West St. Charles Road
Villa Park, Illinois 60181

Power Lawn & Garden Equip. Co.

2551-2571 J. F. Kennedy Road
Dubuque, Iowa 52001

Raub Supply Company

James & Mulberry Sts.
Lancaster, Pennsylvania 17604

Radco Distributors

2403 Market Street
P. O. Box 3216
Jacksonville, Florida 32206

Richmond Battery & Ignition

P. O. Box 25369 — 957 Myers St.
Richmond, Virginia 23260

Smith Hardware Company

515 N. George Street
Goldsboro, North Carolina 27530

South Denver Lawn Equip. Co.

527 West Evans
Denver, Colorado 80223

Suhren Engine

8330 Earhart Blvd.
New Orleans, Louisiana 70118

Sutton's Lawn Mower Shop

Route 4, Box 343
North Little Rock, Arkansas 72117

Warner Equipment

7520 Lyndale Avenue, So.
Minneapolis, Minnesota 55423

WARRANTY PARTS AND SERVICE POLICY

The purpose of warranty is to protect the customer from defects in material and workmanship, defects which are not detected at the time of manufacture.

Our aim is to build into our product quality and reliability. Considerable emphasis is placed on quality control in order to assure our customer of satisfactory product performance. To achieve this goal, it is necessary to gain the cooperation of all concerned, MTD, our sales force and our customers.

MTD's responsibility is to build a quality product and to back up that product. MTD must build this quality product at a competitive price. This cannot be achieved without production in quantity. Quantity production is mass production. In mass production it is always possible for undetected defects to be present when the product reaches the customer. Our warranty is extended to assure the customer that any such defects will be corrected.

Use and maintenance are the responsibility of the customer. MTD cannot assume responsibility for conditions over which it has no control. MTD's responsibility does not cover misuse, excessive use, accident, neglect, improper maintenance or alterations by unauthorized persons. Satisfactory product performance can only result when a manufacturer provides and backs up a quality product and the customer follows through with proper use and proper maintenance of that product. When both the manufacturer and the customer recognize and assume their responsibility, satisfactory product performance and customer satisfaction are assured.

RUNNING CHANGE 2-8-73

123-280

