

Operating/Service Instructions

SELF-PROPELLED ROTARY MOWER IMPORTANT

Model Nos.

122-690 (RECOIL START)

122-692 (ELECTRIC START)

SAFE OPERATION PRACTICES - WALK BEHIND MOWERS

TRAINING

1. Read the Operating and Service Instruction Manual carefully. Be thoroughly familiar with the controls and proper use of the equipment.
2. Never allow children to operate a power mower.
3. Keep the area of operation clear of all persons, particularly small children, and pets.

PREPARATION

1. Thoroughly inspect the area where the equipment is to be used and remove all stones, sticks, wire, bones and other foreign objects.
2. Do not operate equipment when barefoot or wearing open sandals. Always wear substantial footwear.
3. Check fuel before starting engine. Do not fill gasoline tank indoors, when engine is running, or while engine is still hot. Wipe off any spilled gasoline before starting engine.
4. Disengage self-propelled mechanism or drive clutch on units so equipped before starting engine (motor).
5. Never attempt to make a wheel height adjustment while engine (motor) is running.
6. Mow only in daylight or in good artificial light.
7. Never operate equipment in wet grass. Always be sure of your footing; keep a firm hold on the handle and walk; never run.

OPERATION

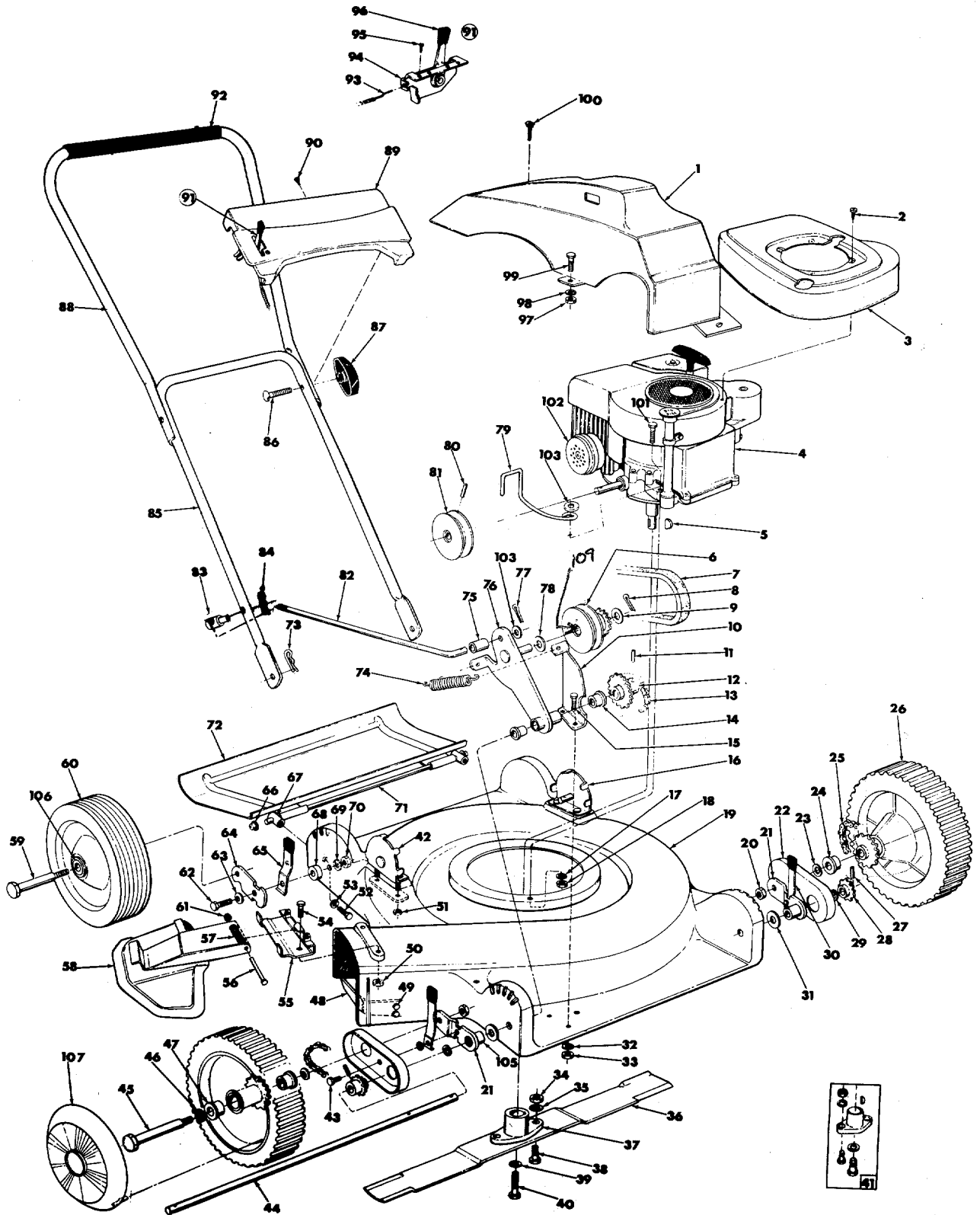
1. Do not change engine governor settings or overspeed engine.
2. Do not put hands or feet near or under rotating parts. Keep clear of discharge opening at all times.
3. Stop blade(s) when crossing gravel drive, walks or roads.
4. After striking a foreign object, stop the engine (motor), remove wire from spark plug, thoroughly inspect the mower for any damage, and repair the damage before restarting and operating the mower.

5. If the equipment should start to vibrate abnormally, stop the engine (motor) and check immediately for the cause. Vibration is generally a warning of trouble.
6. Stop engine (motor) whenever you leave the equipment, before cleaning mower housing, and when making any repairs or inspections.
7. When cleaning, repairing or inspecting, make certain blade and all moving parts have stopped. Disconnect spark plug wire and keep wire away from plug to prevent accidental starting.
8. Do not run engine (motor) indoors.
9. Shut engine (motor) off and wait until blade comes to a complete stop before removing grass catcher and/or unclogging chute.
10. Mow across the face of slopes, never up-and-down. Exercise extreme caution when changing direction on slopes. Do not mow excessively steep slopes.
11. Always disconnect electric mowers (line operated) before cleaning, repairing, or adjusting.
12. Never operate mower without proper guards, plates or other safety protective devices in place.
13. Keep washout ports and other mower housing service openings closed when mowing.

MAINTENANCE AND STORAGE

1. Check blade and engine mounting bolts at frequent intervals for proper tightness.
2. Keep all nuts, bolts, and screws tight to be sure equipment is in safe working condition.
3. Never store equipment with gasoline in the tank inside of a building where fumes may reach an open flame or spark. Allow engine to cool before storing in any enclosure.
4. To reduce fire hazard keep engine free of grass, leaves or excessive grease.
5. Check grass catcher bags frequently for wear or deterioration. Replace with new bags for safety protection.

122-690 AND 122-692



PARTS LIST FOR MODEL NOS. 122-690 AND 122-692

REF. NO.	PART NO.	DESCRIPTION	REF. NO.	PART NO.	DESCRIPTION
1	11114	Belt Cover	55	11639	Adapter Plate
2	710-407	Slotted Hex Washer Hd. Self Tap Scr. 8-32 x 1/2" Lg.	56	711-555	Pivot Pin
3	10877	Engine Shroud	57	732-253	Torsion Spring
4	—	Engine	58	11150	Chute Deflector
5	714-365	Key HiPro #505	59	738-101	Axle Bolt—Rear Wheel
6	756-179	Pulley Assembly with 8 Tooth Sprocket	60	513-9383	Rear Wheel Assembly—Complete
7	754-239	V-Belt 1/2" x 29" Lg.	61	726-106	Push-on Flange Palnut
8	714-115	Cotter Pin 1/8" Dia. x 1.00" Lg.	62	710-191	Hex Hd. Cap Scr. 3/8-24 x 1 1/4" Lg. Heat Treated
9	736-100	Flat Washer .531 I.D. x 1.25 O.D.	63	736-219	Spring Lockwasher .38 I.D. x 1 1/8" O.D.
10	11103	Front Bracket	64	10937	Pivot Bar—Rear Wheel
11	715-116	Spirol Pin 1/8" Dia. x 1.25" Lg.	65	10949	Spring Lever Assembly with knob—Rear
12	10446	Sprocket Assembly—14 Tooth	66	726-106	Push-on Flange Palnut
13	713-159	#48 Chain 1/2" Pitch x 39 Links (20 inch)	67	711-554	Hinge Pin
	713-122	#48 Master Link 1/2" Pitch	68	748-195	Shoulder Spacer
14	748-108	Flange Bearing .503 I.D. x .595 Lg. (Bronze)	69	736-217	Spring Lockwasher 3/8" Scr. Heavy Duty
15	710-258	Hex Hd. Cap Scr. 1/4-20 x .625" Lg.	70	712-711	Elastic Locknut 3/8-24 Thd.
16	310-8389	Handle Mount Bracket Ass'y.—L.H.	71	11186	Hinge Rod
17	736-119	Spring Lockwasher 5/16" Scr.*	72	11185	Protective Shield
18	712-267	Hex Nut 5/16-18 Thd.*	73	714-104	Hair Pin—Cotter
19	11443	Deck Assembly—Complete	74	732-248	Extension Spring
20	712-342	Hex Jam Nut 3/8-16 Thd.	75	11112	Spacer (Engagement Arm)
21	11105	Front Wheel Pivot Bar Assembly	76	11101	Engagement Arm Assembly
22	11104	Chain Cover	77	714-474	Cotter Pin 1/8" Dia. x .75" Lg.*
23	736-100	Flat Washer .531 I.D. x 1.25 O.D.	78	736-160	Flat Washer .531 I.D. x .940 O.D.
24	748-108	Flange Bearing .503 I.D. x .595 Lg. (Bronze)	79	723-283	Belt Guide
25	713-136	#48 Chain 1/2" Pitch x 19 Links (10-inch)	80	715-120	Spiral Pin 3/16" Dia. x 1.00" Lg.
26	734-418	Front Wheel Assembly—Complete	81	756-115	Pulley—P.T.O.
27	715-129	Spiral Pin 1/8" Dia. x .812 Lg.	82	747-104	Adjustment Rod
28	11111	Sprocket Assembly—8-Tooth	83	711-570	Ferrule (For Engagement Rod)
29	736-105	Belleville Washer	84	714-101	Hair Pin Cotter 1/2" Dia.
30	310-9827	Spring Lever Assembly with/Knob—Front	85	11113	Lower Handle
31	736-181	Flat Washer .938 I.D. x 1.50 O.D.	86	710-405	Curved Hd. Bolt 5/16-18 x 1 3/4" Lg.
32	736-329	Spring Lockwasher 1/4" Scr.*	87	305-9966	Knob Handle Ass'y.
33	712-287	Hex Nut 1/4-20 Thd.*	88	10011	Upper Handle
34	712-123	Hex Nut 5/16-24 Thd.*	89	11606	Handle Panel
35	736-119	Spring Lockwasher 5/16" Scr.*	90	710-224	Hex Hd. Self Tap Scr. #10 x 1/2" Lg. Type "A"
36	742-125	Blade—22-inch	91	11610	Throttle Control Assembly—Complete
37	748-189	Blade Adapter	92	718-144	Grip
38	710-117	Hex Hd. Cap Scr. 5/16-24 x 1" Lg. Heat Treated	93	732-200	Conduit and Wire
39	736-217	Spring Lockwasher 3/8" Scr.—Heavy Duty	94	11600	Throttle Control Bracket Assembly
40	710-459	Hex Hd. Cap Scr. 3/8-24 x 1 1/2" Lg. Heat Treated	95	710-192	Truss Hd. Mach. Scr. #10-24 x 3/8" Lg.*
41	10769	Blade Adapter Kit	96	305-7470	Throttle Control—Knob
42	310-8388	Handle Mount Bracket Assembly—R.H.	97	712-287	Hex Nut 1/4-20 Thd.*
43	710-508	Hex Hd. Cap Scr. 3/8-16 Thd.*	98	736-329	Spring Lockwasher 1/4" Scr.*
44	11116	Drive Shaft	99	710-289	Hex Hd. Cap Scr. 1/4-20 x .50" Lg.*
45	738-154	Axle Bolt—Front Wheel	100	710-456	Hex Drilling Scr. #10 x .50" Lg.
46	736-105	Belleville Washer	101	710-442	Hex Hd. Cap Scr. 5/16-18 x 1 1/2" Lg.*
47	748-108	Flange Bearing .503 I.D. x .595" Lg. (Bronze)	102	310-9278	Muffler Deflector
48	11156	Internal Bar	103	736-264	Flat Washer .344 I.D. x .625 O.D.
49	710-289	Hex Hd. Cap Scr. 1/4-20 x .50" Lg.*	104	746-128	Cable Clip (Not Shown)
50	712-107	Hex Center Locknut 1/4-20 Thd.	105	748-199	Sleeve Bearing (For Front Wheel Pivot Bar)
51	712-107	Hex Center Locknut 1/4-20 Thd.	106	741-114	Ball Bearing
52	710-513	Hex Hd. Cap Scr. 1/4-28 x 3/8" Lg. (Nylock)	107	305-9871	Hub Cap
53	736-329	Spring Lockwasher 1/4" Scr.*	108	312-7919	Scalp Plate (Not Shown)
54	710-252	Hex Hd. Cap Scr. 1/4-20 x .750" Lg.*	109	748-150	Bearing

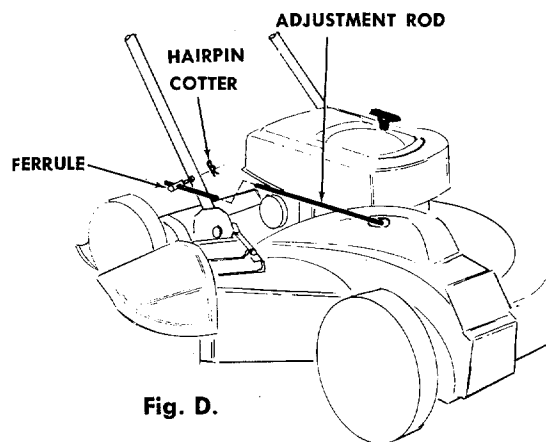
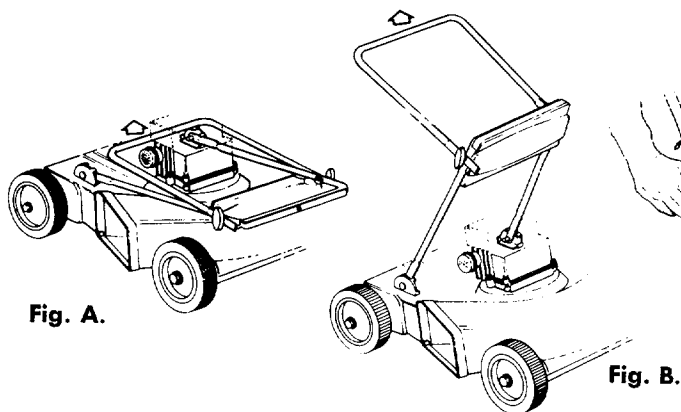
*For faster service obtain standard nuts, bolts and washers locally. If these items cannot be obtained locally, order by part number and size as shown on the parts list.

437 Flag Red 438 Polar Blue

When ordering parts, if color or finish is important, use the appropriate color code shown above (e.g. Polar Blue Finish, 11443 (438)).

The engine is not under warranty by the mower manufacturer... If repairs or service is needed on the engine, please contact your nearest authorized engine service outlet. Check the "Yellow Pages" of your telephone book under "Engines—Gasoline."





ASSEMBLY INSTRUCTIONS

1. Unfold handle assembly as shown in figures A, B and C.
2. Place adjustment rod with ferrule through hole in lower right hand handle. (See figure D.) NOTE: Ferrule and adjustment rod must be to the outside of handle as shown in figure D.
3. Secure ferrule in position with hairpin cotter from screw pack. NOTE: The ferrule position is preset at the factory. (For adjustment instructions see Belt Adjustment on page 6.)

NOTE: This instruction manual covers various models and all accessories shown do not necessarily apply to your model mower.

ASSEMBLY—ELECTRIC START MODELS ONLY

After unfolding the handle follow these steps. The battery has been installed at the factory for you.

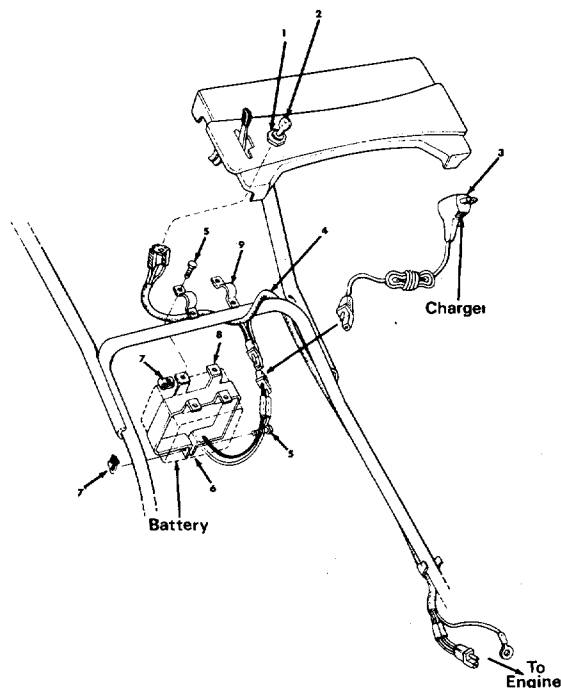
1. Plug the cord from the engine to the power outlet on the battery.
2. Plug the three hole socket into the switch on the handle panel.
3. It is not necessary to unplug or remove the battery from the lawn mower when charging the battery.
4. The battery must be charged 14-16 hours prior to initial use.

BATTERY CARE

1. To completely charge a discharged battery it takes 14-16 hours.
2. Recharge on ordinary 110-120 Volt, 60-cycle house current.
3. Battery may be recharged on lawn mower or removed if more convenient.
4. Charger will not overcharge or damage battery if left on for an extended period.
5. Always remove the charger plug from the battery before removing the charger from the house current.
6. Remove ignition key and keep in a different location whenever lawn mower is not in use to prevent accidental starting.

PARTS LIST FOR 122-692 ELECTRICAL SYSTEM

Ref. No.	Part No.	Description
1	725-267	Ignition Switch
2	725-201	Ignition Key
3	725-304	G.E. Charger (#49B111LD03)
4	725-305	Wire Harness
5	710-429	Hex B-Tapping Scr. # 10 Thd. x .38" Lg. (5)
6	725-303	Battery G.E. Model (41B906LD02-G2)
7	712-344	Speed Nut #10Z (5)
8	11638	Battery Holder Assembly
9	11618	Clamp (2)



OPERATION

1. Service engine with gas and oil. See engine manual packed with lawn mower for complete instructions for care and maintenance of engine. **READ DIRECTIONS CAREFULLY.**
2. To disconnect the power to the rear drive wheels so the mower can be pushed by hand, depress the handle. To engage the drive wheels, lift the handle.
3. When turning the mower depress the handle and raise the front wheels, and pivot on the rear wheels. The differential action of the rear axle allows the wheels to turn independently on turns and allows both wheels to drive when the handle is in the UP position.

START ENGINE

With the throttle control lever conveniently mounted on the handle, start, fast, slow and stopping of the engine is conveniently controlled with one lever. After the engine has been properly fueled and oiled (Refer to engine operating and maintenance instructions.) start engine in the following manner.

RECOIL STARTER

1. Move throttle control lever to **START** position.
2. Crank engine. Pull recoil until starter drive engages and then with a quick firm pull. Do not pull out so far that rope stops with a jerk as this will cause rope failure. Do not allow rope and handle to snap back into place.
3. After two or three full firm pulls on recoil, move speed control to **RUN** position or as soon as engine fires.
4. Operate a new engine at intermediate speeds and light load for the first few hours as you would a new automotive engine.
5. To stop engine, move speed control lever to **STOP** position.
6. If carburetor needs adjustment to start or for operation, see "Carburetor Readjustment" section.

ELECTRIC START

1. Move throttle control to **START** position.
2. Insert the key and turn clockwise until the engine starts.
3. To start the engine manually, remove the plastic cap from the flywheel, wrap a short piece of rope around the starter pulley, set the throttle control in the **START** position and pull the rope to start.
4. Operate a new engine at intermediate speeds and light loads for the first few hours as you would a new automotive engine.
5. To stop engine, move speed control lever to **STOP** position.
6. If carburetor needs adjustment to start or for operation, see "Carburetor Readjustment" section.

NOTE: A brief break-in period is essential to insure maximum engine life. This consists of running the engine at half speed for a period of time required to use one tank of gasoline. This is necessary on the initial run only. It is also recommended that the oil be changed after five (5) hours of operation. This allows for the removal of impurities which may have accumulated during the break-in period. Subsequent oil changes should be made as stated in the engine manual. Always check oil before using your mower. Be sure crankcase is full.

ADJUSTMENTS

CAUTION: Do not at any time make any adjustment to lawn mower without first stopping engine and disconnecting spark plug wire.

1. **CUTTING HEIGHT**—An adjusting plate and thumb lever at each wheel position provides cutting height adjustment. Each adjusting plate has five holes. Height of cut will be changed when the thumb lever is moved from one hole to another. Simply depress thumb lever towards wheel and move wheel and lever assembly to desired position. All wheels must be positioned in relative height of cut positions.
2. **BELT**—The belt requires no adjustment. The idler maintains the proper tension on the belt at all times.
3. **THROTTLE**—If adjustment becomes necessary, the throttle control wire assembly can be reset as follows:
 1. Loosen, but do not remove, screw securing throttle control wire assembly at engine.
 2. Move throttle control lever on handle to **FAST** position.
 3. Move lever, to which control wire is fastened at engine, to full open position and retighten screw to secure throttle control wire assembly.

USING YOUR ROTARY MOWER

For the best results do not cut wet grass because it tends to stick to the underside of the mower thus preventing proper discharge of grass clippings. If wet grass must be cut, reduce engine speed and walking speed to help distribute the clippings more effectively. New grass should be treated as wet grass, otherwise a normal walking speed is about the right pace for efficient mowing. The best mowing pattern is one that allows the clippings to discharge towards the uncut part of the lawn. This permits recutting of the clippings to further pulverize them. When cutting high weeds, discharge towards cut portion then recut at right angles to first direction.

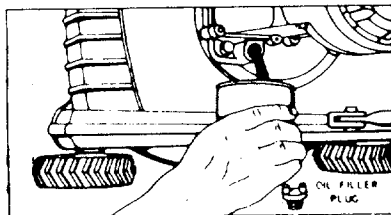
Lawn should be cut in the fall as long as there is growth.

LUBRICATION

Important: Always stop engine and disconnect spark plug wire before cleaning, lubricating or doing any kind of work on lawn mower.

1. ENGINE—Follow Engine Manual for lubrication instructions.

NOTE: FILL AND DRAIN OIL FROM OIL FILL PLUG.



Always disconnect spark plug cable during repairs, refueling or changing oil.

Engine oil may be drained through oil filler opening by tilting the mower on its side. Change oil after first 5 hours of operation while engine is warm. Thereafter, change oil every 25 hours of operation while engine is warm.

2. CHAIN—Lubricate periodically with light engine oil (S.A.E. No. 10 or 20)

3. CONTROLS—Lubricate periodically the control assemblies and conduit and wire with light engine oil for ease of operation.

4. WHEELS—Lubricate periodically bearings on front and rear wheels with light engine oil.

5. PROTECTIVE SHIELD—The pivot points on the protective shield should be lubricated periodically with oil to prevent any rust or binding up.

6. CHUTE DEFLECTOR—The torsion spring and pivot point should be lubricated periodically with oil to prevent any rust or binding up. Deflector must work freely.

CUTTING BLADE—The blade may easily be removed for grinding or replacement as follows:

1. Remove bolt and lockwasher holding blade and blade adapter to engine crankshaft.
2. Remove blade and blade adapter from engine crankshaft.
3. Remove two bolts, lockwashers and nuts holding blade to blade adapter (if necessary).

When sharpening blade, follow the original angle of grind as a guide. It is extremely important that each cutting edge receives an equal amount of grinding to prevent an unbalanced blade. An unbalanced blade will cause excessive vibration when rotating at high speeds and may cause damage to the mower.

Upon reassembling, make certain all parts are assembled properly and tightened securely.

DECK—The underside of the mower deck should be cleaned after each period of use as grass clippings, leaves, dirt, and other matter accumulates. This accumulation of grass clippings, etc., is undesirable as it will invite rust and corrosion and may cause an uneven discharge of grass clippings at next cutting. The deck may be cleaned by tilting the mower forward or on its left side and scraping clean with a suitable tool or washing with a stream of water from a garden hose.

CAUTION: Do not direct the stream of water at a hot engine as damage to the engine may result.

BELT ADJUSTMENT—The belt may be adjusted by removing the hairpin cotter from the ferrule located on right hand side of the lower handle. See figure D, page 4.

NOTE: If belt becomes worn or stretched, you may need more engagement.

1. Remove hairpin cotter.
2. Pull ferrule out of the handle.
3. Unscrew the ferrule toward end of the rod, to increase the engagement.
4. Place ferrule back into handle and secure with hairpin cotter.

IMPORTANT

After striking a foreign object, stop the engine (motor), remove wire from spark plug, thoroughly inspect the mower for any damage, and repair the damage before restarting and operating the mower.

GRASS CATCHER Model No. 192-006 is available as optional equipment for the mowers shown in this manual.

WARNING:

1. The mower should not be operated without the entire grass catcher or chute deflector in place.
2. The mower should not be operated without the protective shield on the rear of the deck in place.

NOTE:

Under normal usage bag material is subject to wear, and should be checked periodically. Be sure any replacement bag complies with the mower manufacturer's recommendations.

For replacement bags, use only factory authorized replacement bag No. 764-119.

WARRANTY

For one year from date of purchase, MTD Products Inc. will replace for the original purchaser, free of charge, F.O.B. factory or authorized service firm, any part or parts found to be defective in material or workmanship. All transportation charges on parts submitted for replacement under this warranty must be paid by the purchaser. This warranty does not include replacement of parts which become inoperative through misuse, excessive use, accident, neglect, improper maintenance or alterations by unauthorized persons. This warranty does not include the engine, motor, battery, battery charger or any component parts thereof. For service on these units refer to the applicable manufacturer's warranty.

The above warranty will apply only to the original owner and will be effective only if the warranty card has been properly processed. It will not apply where the unit has been used commercially.

Warranty service is available through your local authorized service dealer or distributor. **UNDER NO CIRCUMSTANCES WILL THE RETURN OF A COMPLETE UNIT BE ACCEPTED BY THE FACTORY UNLESS PRIOR WRITTEN PERMISSION HAS BEEN EXTENDED.**

PARTS INFORMATION

MOWER, TILLER, SNOW THROWER AND TRACTOR PARTS

Mower, tiller, snow thrower and tractor parts are available through the authorized service firms listed below. All orders should specify the model number of your unit, parts numbers, description of parts and the quantity of each part required.

A 1 Engine & Mower Co.
327 East 9th Street
Salt Lake City, Utah 84102

American Electric Ignition Co.
124 N. W. 8th Street
Oklahoma City, Oklahoma 73102

Auto Electric & Carburetor Co.
2625 4th Avenue, S.
P. O. Box 1948
Birmingham, Alabama 35233

Automotive Equipment Service Co.
3117 Holmes Street
Kansas City, Missouri 64109

Bailey's Rebuild Inc.
1325 E. Madison Street
Seattle, Washington 98102

Brown Equipment Distributor Inc.
110 Beech Street
Corydon, Indiana 47112

Bullard Supply
2409 Commerce Street
Houston, Texas 77003

Center Supply Company
6867 New Hampshire Avenue
Takoma Park, Maryland 20012

R. T. Clapp Co.
2016 Magnolia Ave., N. E.
Knoxville, Tennessee 37917

W. B. Clements
400 Salem Avenue
Roanoke, Virginia 24016

Morton B. Collins Co.
300 Birnie Avenue
Springfield, Massachusetts 01107

Dixie Sales Company
P. O. Box 1408
327 Battleground Avenue
Greensboro, North Carolina 27402

East Point Cycle & Key Shop
1617 Whiteway
East Point, Georgia 30044

Gamble Distributors
West End Avenue
Carthage, New York 13619

Garden Equipment Co., Inc.
6600 Cherry Avenue
Long Beach, California 90805

Henzler, Inc.
2015 Lemay Ferry Road
St. Louis, Missouri 63125

Frank E. Ives & Son
1101 Lincoln Avenue
Prospect Park, Pennsylvania 19076

J. W. Jewett Co.
981 Folsom Street
San Francisco, California 94107

Kenton Supply
8216 North Denver Avenue
Portland, Oregon 97217

Kimber's Inc.
615 W. Genesee Street
Syracuse, New York 13204

Marr Brothers
423 E. Jefferson
Dallas, Texas 75203

Mathews Auto Electric Co.
420 East 2nd Street
Tulsa, Oklahoma 74120

McClure Lawn & Garden Supply
1114 Lexington Avenue
Mansfield, Ohio 44907

Memphis Cycle & Supply Co.
421 Monroe Avenue
Memphis, Tennessee 38103

ENGINE PARTS AND SERVICE

Engine parts and service should be handled by your nearest authorized engine service firm. Check the yellow pages of your telephone directory under the listing *Engines - Gasoline*, Briggs and Stratton or Tecumseh Lauson - Power Products.

Moz-All of Florida, Inc.
365 Greco Avenue
Coral Gables, Florida 33146

National Central, Div. of Joe Sterling, Inc.
Drawer "D" 687 Seville Rd.
Wadsworth, Ohio 44281

Power Equipment Distributor
36463 So. Gratiot Avenue
Mt. Clemens, Michigan 48043

Parts & Sales Inc.
335 West St. Charles Road
Villa Park, Illinois 60181

Power Lawn & Garden Equip. Co.
2551-2571 J. F. Kennedy Road
Dubuque, Iowa 52001

Raub Supply Company
James & Mulberry Sts.
Lancaster, Pennsylvania 17604

Radco Distributors
2403 Market Street
P. O. Box 3216
Jacksonville, Florida 32206

Richmond Battery & Ignition
P. O. Box 25369 - 957 Myers St.
Richmond, Virginia 23260

Smith Hardware Company
515 N. George Street
Goldsboro, North Carolina 27530

South Denver Lawn Equip. Co.
527 West Evans
Denver, Colorado 80223

Suhren Engine
8330 Earhart Blvd.
New Orleans, Louisiana 70118

Sutton's Lawn Mower Shop
Route 4, Box 343
North Little Rock, Arkansas 72117

Warner Equipment
7520 Lyndale Avenue, So.
Minneapolis, Minnesota 55423