

## SELF-PROPELLED ROTARY MOWER

Model Nos.  
**122-250**

### IMPORTANT

## SAFE OPERATION PRACTICES - WALK BEHIND MOWERS

#### TRAINING

1. Read the Operating and Service Instruction Manual carefully. Be thoroughly familiar with the controls and proper use of the equipment.
2. Never allow children to operate a power mower.
3. Keep the area of operation clear of all persons, particularly small children, and pets.

#### PREPARATION

1. Thoroughly inspect the area where the equipment is to be used and remove all stones, sticks, wire, bones and other foreign objects.
2. Do not operate equipment when barefoot or wearing open sandals. Always wear substantial footwear.
3. Check fuel before starting engine. Do not fill gasoline tank indoors, when engine is running, or while engine is still hot. Wipe off any spilled gasoline before starting engine.
4. Disengage self-propelled mechanism or drive clutch on units so equipped before starting engine (motor).
5. Never attempt to make a wheel height adjustment while engine (motor) is running.
6. Mow only in daylight or in good artificial light.
7. Never operate equipment in wet grass. Always be sure of your footing; keep a firm hold on the handle and walk; never run.

#### OPERATION

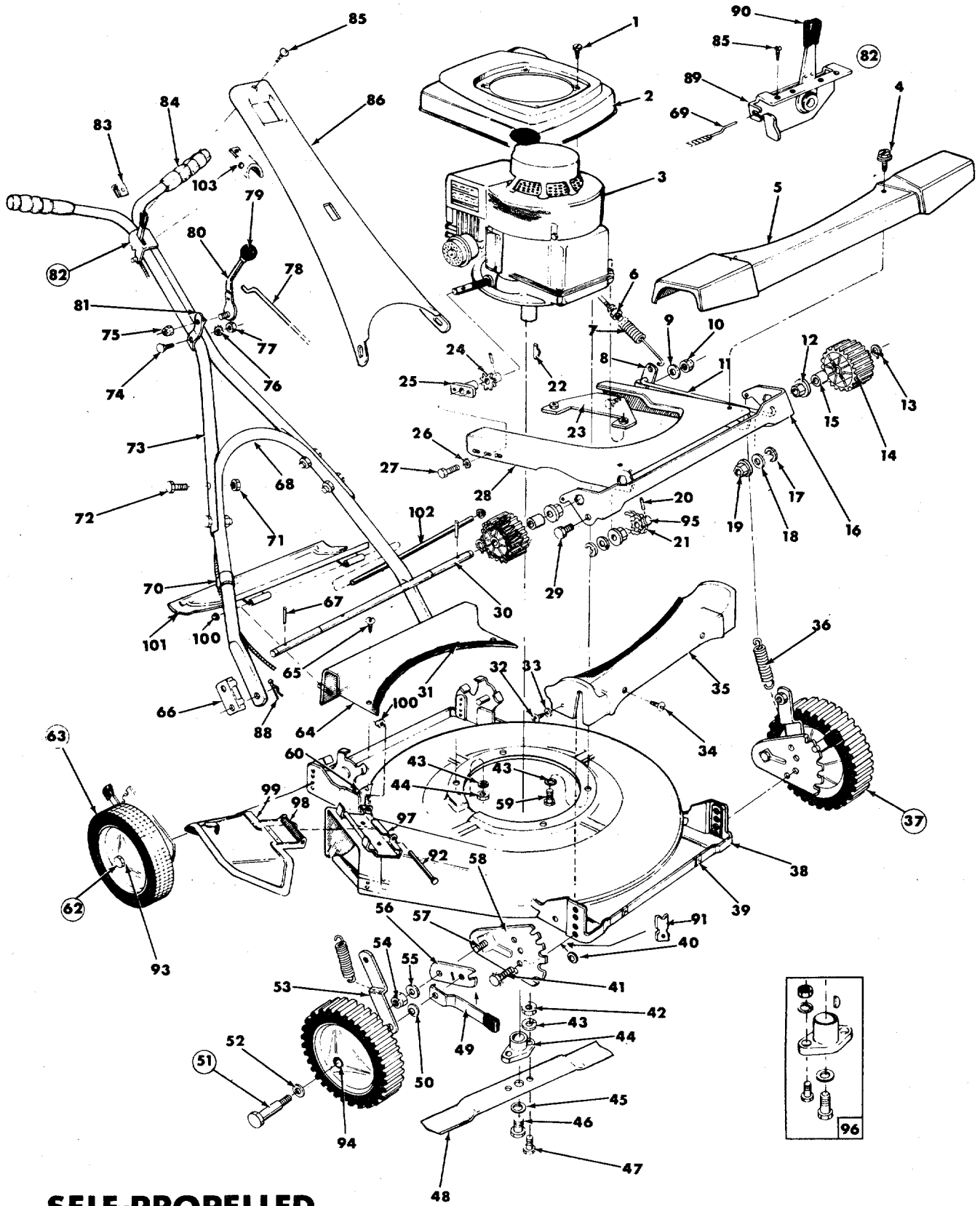
1. Do not change engine governor settings or overspeed engine.
2. Do not put hands or feet near or under rotating parts. Keep clear of discharge opening at all times.
3. Stop blade(s) when crossing gravel drive, walks or roads.
4. After striking a foreign object, stop the engine (motor), remove wire from spark plug, thoroughly inspect the mower for any damage, and repair the damage before restarting and operating the mower.

5. If the equipment should start to vibrate abnormally, stop the engine (motor) and check immediately for the cause. Vibration is generally a warning of trouble.
6. Stop engine (motor) whenever you leave the equipment, before cleaning mower housing, and when making any repairs or inspections.
7. When cleaning, repairing or inspecting, make certain blade and all moving parts have stopped. Disconnect spark plug wire and keep wire away from plug to prevent accidental starting.
8. Do not run engine (motor) indoors.
9. Shut engine (motor) off and wait until blade comes to a complete stop before removing grass catcher and/or unclogging chute.
10. Mow across the face of slopes, never up-and-down. Exercise extreme caution when changing direction on slopes. Do not mow excessively steep slopes.
11. Always disconnect electric mowers (line operated) before cleaning, repairing, or adjusting.
12. Never operate mower without proper guards, plates or other safety protective devices in place.
13. Keep washout ports and other mower housing service openings closed when mowing.

#### MAINTENANCE AND STORAGE

1. Check blade and engine mounting bolts at frequent intervals for proper tightness.
2. Keep all nuts, bolts, and screws tight to be sure equipment is in safe working condition.
3. Never store equipment with gasoline in the tank inside of a building where fumes may reach an open flame or spark. Allow engine to cool before storing in any enclosure.
4. To reduce fire hazard keep engine free of grass, leaves or excessive grease.
5. Check grass catcher bags frequently for wear or deterioration. Replace with new bags for safety protection.

# 122-250



## SELF-PROPELLED ROTARY MOWER

## PARTS LIST FOR MOWER MODEL NO. 122-250

Ref. No.	Part No.	DESCRIPTION	Ref. No.	Part No.	DESCRIPTION
1	710-407	Slotted Hex Washer Hd. Ext. Scw. #8-32 x 1/2" Lg. *	51	738-430	Axle Bolt - Front
2	10968	Engine Shroud	52	736-160	Flat Washer
3	-----	Engine	53	10379	Link Assembly
4	710-148	Hex Hd. Slotted Thd. Cut Scw. #8-32 x 3/8" Lg. *	54	712-116	Elastic Locknut 3/8-24 Thd.
5	10913	Drive Cover	55	736-300	Flat Washer 3/8 Scw. *
6	712-324	Elastic Stop Nut 1/4 Thd.	56	10619	Pivot Bar
7	732-184	Extension Spring	57	711-495	Shoulder Bolt - Special
8	10394	Link	58	10919	Index Plate Assembly - R.H.
9	736-300	Flat Washer		10944	Index Plate Assembly - L.H.
10	712-116	Elastic Locknut 3/8-24 Thd.	59	710-442	Hex Hd. Cap Scw. 5/16-18 x 1-1/2" Lg. *
11	10395	Clutch Rod	60	712-207	Speed Nut
12	748-227	Hex Bearing	61	310-7861	Control Clamp
13	716-106	"E" Ring for 5/8" Shaft	62	738-102	Axle Bolt - Rear
14	10914	Drive Pinion	63	501-9392	Wheel Assembly Complete - Rear
15	310-2265	Sleeve	64	11619	Rear Cover Assembly
16	10372	Drive Support	65	710-473	Truss Hd. Mach. Scw. #10-24 x 1/2" Lg. *
17	716-106	"E" Ring for 5/8" Shaft	66	10430	Handle Bracket
18	736-860	Flat Washer	67	715-246	Roll Pin 3/16 Dia. x 1-1/4" Lg. *
19	748-227	Hex Bearing	68	310-8398	Lower Handle
20	715-247	Roll Pin 3/16 Dia. x 1" Lg. *	69	732-141	Conduit and Wire
21	713-135	Chain with Master Link #48 x 26" Lg.	70	746-145	Cable Clip
22	714-365	Key - Hi Pro #505	71	712-107	Hex Center Locknut 1/4-20 Thd.
23	10381	Engine Bracket Assembly	72	710-106	Hex Hd. Cap Scw. 1/4-20 x 1-1/4" Lg. *
24	10377	Sprocket Assembly	73	310-9364	Upper Handle - (two Required)
25	748-183	Bearing Support	74	710-256	Carriage Bolt 1/4-20 x 1-1/2" Lg. *
26	736-222	External Lockwasher 1/4" Scw.	75	712-324	Elastic Stop Nut 1/4-20 Thd.
27	710-230	Hex Hd. Cap Scw. 1/4-28 x 1/2" Lg. *	76	736-222	External Lockwasher 1/4" Scw. *
28	10370	Pivot Plate	77	712-287	Hex Nut 1/4-20 Thd. *
29	738-147	Shoulder Bolt - Special	78	711-440	Lockout Rod
30	711-435	Shaft	79	305-8132	Ball-Knob (Red)
31	731-123	Vinyl Strip	80	310-8169	Lockout Lever Assembly
32	710-128	Hex Hd. Slotted Scw. #10-32 x 1/2" Lg. *	81	10474	Lockout Bracket
33	736-147	Lockwasher 10-32 Scw. *	82	11597	Throttle Control Assembly - Complete
34	710-473	Truss Hd. Mach Scw. #10-24 x 1/2" Lg. *	83	712-526	Speed Nut
35	10547	Front Cover	84	305-7071	Grip
36	732-209	Extension Spring	85	710-473	Truss Hd. Mach. Scw. #10-24x1/2" Lg.
37	503-9392	Wheel Assembly Complete - Front	86	11605	Handle Panel
38	11416	Deck Assembly Complete	87	710-158	Hex Hd. Cap Scw. 5/16-24 x 1-1/4" Lg. *
39	712-526	Speed Nut	88	714-507	Cotter Pin
40	736-300	Flat Washer 3/8 Scw. *	89	11600	Throttle Control - Bracket Assembly
41	710-209	Sems Hex Hd. Cap Scw. 3/8-16 x 5/8 Lg. *	90	305-7470	Throttle Control - Knob
42	712-123	Hex Nut 5/16-24 Thd. *	91	10565	Spacer Bracket
43	736-119	Spring Lockwasher 5/16 Scw. *	92	711-555	Pivot Pin
44	748-189	Blade Adapter	93	305-7006	Fortiflex Bearing - Rear Wheel Only
45	736-217	Spring Lockwasher 3/8 Scw. Heavy Duty	94	748-125	Sintered Bearing - Front Wheel Only
46	710-459	Hex Hd. Cap Scw. 3/8-24 x 1-1/2" Lg. Heat Treated	95	10378	Sprocket Assembly
47	710-117	Hex Hd. Cap Scw. 5/16-24 x 1" Lg. Heat Treated	96	10769	Blade Adapter Kit
48	742-125	Blade - 22 Inch	97	11130	Adapter Plate
49	10530	Spring Lever Assembly with Knob	98	732-253	Torsion Spring
50	736-105	Belleville Washer	99	11146	Chute Deflector
			100	726-106	Push-On Flange Palnut
			101	11164	Protective Shield
			102	11145	Hinge Rod
			103	310-7861	Control Clamp
			104	305-9871	Hub Cap (Not Shown)

\* For faster service, obtain standard nuts, bolts, and washers locally. If these items cannot be obtained locally, order by part number and size as shown on parts list.

437 - Flag Red) When ordering parts if color or finish is important, use the appropriate color code shown at left. (e.g. 438 - Polar Blue) Flag Red Finish - 11416 (438)).

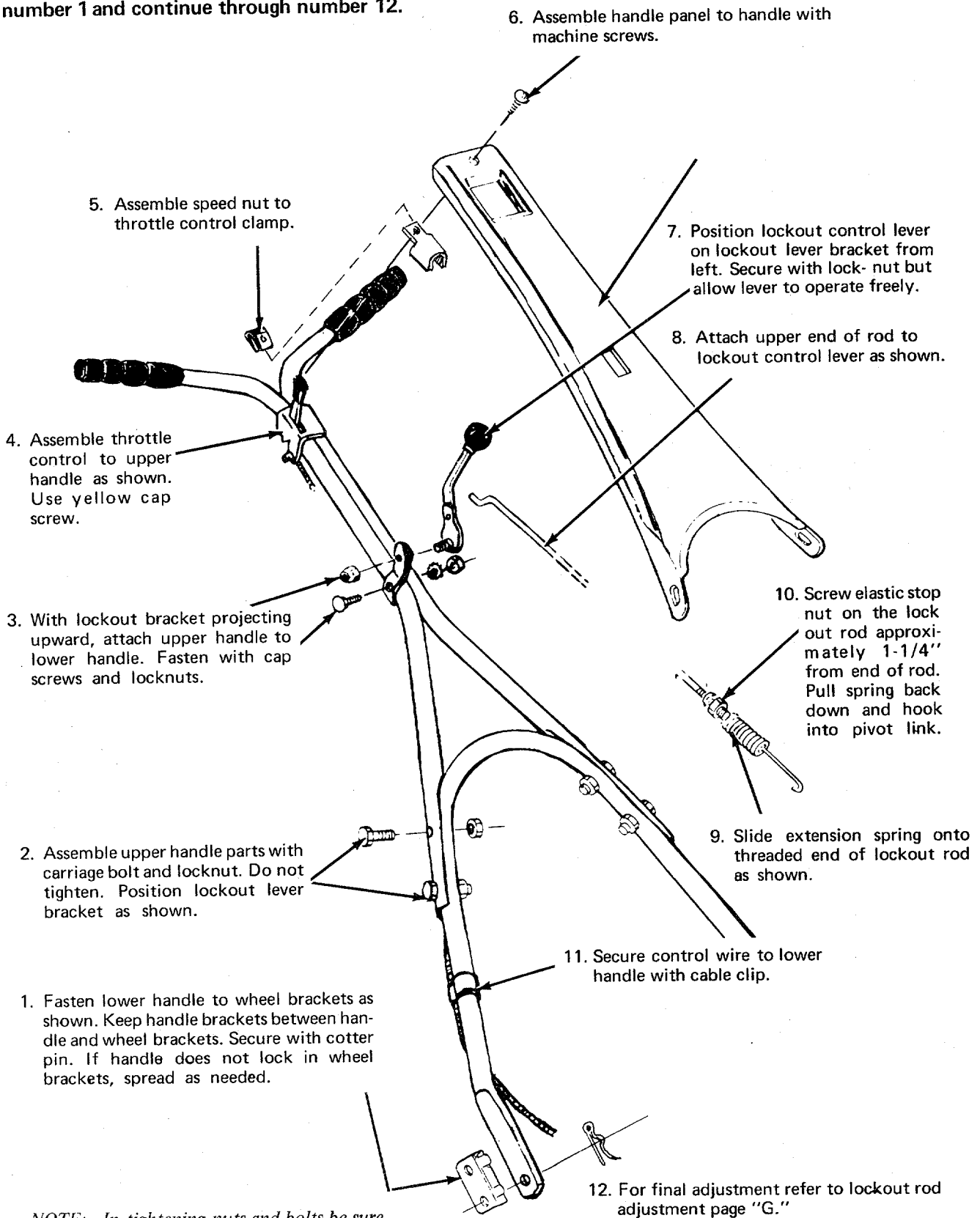
The engine is not under warranty by the mower manufacturer. If repairs or service is needed on the engine, please contact your nearest authorized engine service outlet. Check the "Yellow Pages" of your telephone book under "Engines - Gasoline."

Find us fast in the



## ASSEMBLY INSTRUCTIONS

**NOTE:** Follow instructions starting with number 1 and continue through number 12.



*NOTE: In tightening nuts and bolts be sure that those which secure lockout control lever to lockout control lever bracket allows free movement of each of these items.*

This mower should be broken in following the procedure described in the break-in instructions. The added effort here will double the service life of the unit. Particular attention should be paid to the notes on alignment.

When operating this mower, unnecessary or excessive engaging of the drive pinions with the wheels should be avoided. This is achieved by minimizing the raising and lowering of the handle during the mowing operation. Failure to observe this operating rule can reduce the service life of the front tires and drive pinions substantially. When engaging the self-propelled mechanism, a slight forward push on the mower as the drive pinions and the gear tread tires mesh will add to smoother and quieter operation. In addition to a smoother operation, it will add substantially to the service life of both the tires and the drive pinions.

### HANDLE ASSEMBLY PRECAUTIONS

Although the handle is of a simple design, difficulty has been encountered in its assembly. Certain precautions concerning its assembly must be heeded. The handle must be assembled as shown in the diagram. Trouble arises when certain parts are put together improperly.

- A. Lockout control lever must be mounted as shown in the illustration.
- B. The lockout control lever bracket must be mounted with the projection upward as shown in the illustration.
- C. If lower handle is too narrow to lock into handle bracket, spread as needed.

### BREAK-IN INSTRUCTIONS

1. Before starting the engine, lubricate all the bronze bearings on the drive shaft. The same oil which is used for the engine may be used for this.

Check the lockout control for proper operation. See HANDLE ASSEMBLY PRECAUTIONS.

Check drive assembly alignment. When the lockout control lever is moved to the Self-Propelled position (as shown in diagram), the black nylon drive pinions should mesh simultaneously with the gear tread tires. The lockout control lever should move from Self-Propelled position easily.

### OPERATION

1. Service engine with gas and oil. See Engine Manual packed with lawn mower for complete instructions for care and maintenance of engine. READ DIRECTIONS CAREFULLY.
2. Lubricate bronze bearings on drive shaft.
3. Check drive assembly for correct alignment (see break-in instructions.)
4. When ready to start engine, place lockout control lever into free wheeling position. This is done by snapping the lockout control lever back. Start engine in accordance with instructions in Engine Manual. After engine starts,

### IMPORTANT

After striking a foreign object, stop the engine (motor), remove wire from spark plug, thoroughly inspect the mower for any damage, and repair the damage before restarting and operating the mower.

move throttle control lever on handle to the desired engine speed.

5. Lockout control lever may now be moved forward for self-propelled operation. When the lockout control lever is in the forward position, the drive pinions engage with the gear tread tires and forward drive results.
6. Temporary free wheeling is achieved by depressing the handle and raising front wheels slightly off the ground. Self-propelled drive is resumed when handle is released. . . Engine is stopped by placing control lever on handle into "Stop" position.

### LUBRICATION

**IMPORTANT:** Always stop engine and disconnect spark plug wire before cleaning, lubricating or doing any kind of work on lawn mower.

**WHEELS** – The bearing on the rear wheels of your lawn mower are made of Lifetime Fortiflex. No lubrication is required. Lubricate front wheel bearing as needed.

**THROTTLE** – Periodically lubricate throttle control lever and throttle wire assembly with a few drops of light oil (S.A.E. No. 10 or 20) for ease of operations.

**BRONZE BEARINGS** – Periodically lubricate all bronze bearings with a few drops of light oil (S.A.E. No. 10 or 20) to minimize friction.

**ENGINE** – Follow Engine Manual for lubrication instructions.

**PROTECTIVE SHIELD** – The pivot points on the protective shield should be lubricated periodically with light oil to prevent any rust or binding.

**CHUTE DEFLECTOR** – The torsion spring and pivot point should be lubricated periodically with light oil to prevent any rust or binding. Deflector must work freely.

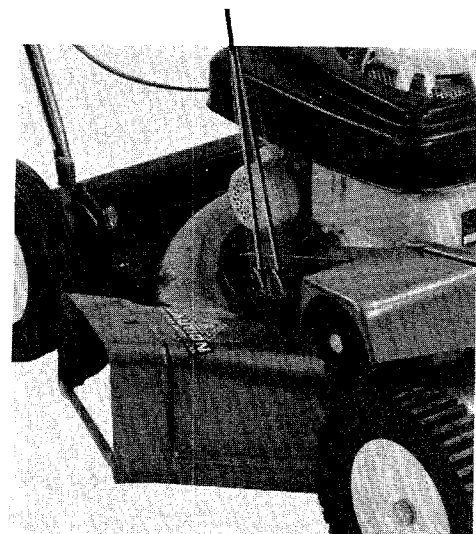
### ADJUSTMENTS

**CAUTION:** Do not at any time make any adjustment to lawn mower without first stopping engine and disconnecting spark plug wire.

#### CHAIN ADJUSTMENT

1. Loosen (do not remove) two hex head cap screws. (See fig. 3.)
2. Pull pivot plate forward.
3. Tighten cap screws and check chain tension. Repeat adjustment if necessary.

Sems Hex Head Cap Screws  
(Ref. No. 27)



Pivot Plate  
(Ref. No. 28)

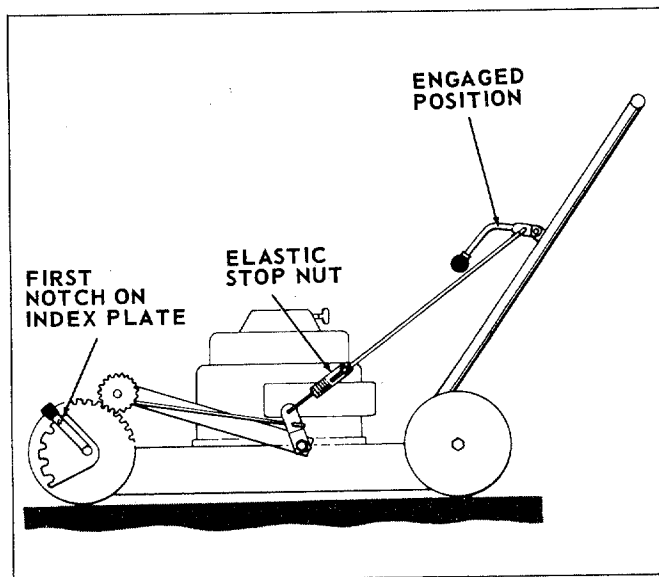
**CUTTING HEIGHT** – An adjusting plate and thumb lever at each wheel position provides cutting height adjustment. Each adjusting plate has five holes. Height of cut will be changed when the thumb lever is moved from one hole to another. Simply depress thumb lever towards wheel and move wheel and lever assembly to desired position. All wheels must be positioned in relative height of cut positions.

**THROTTLE** – If adjustment becomes necessary, the throttle control wire assembly can be reset as follows.

1. Loosen, but do not remove, screw securing throttle control wire assembly at engine.
2. Move throttle control lever on handle to “Fast” position.
3. Move lever, to which control wire is fastened at engine, to full open position and retighten screw to secure throttle control wire assembly.

## LOCKOUT ROD ADJUSTMENT

1. Place front wheel height adjusters in the lowest cutting position. (See figure 4.)
2. Engage lockout control lever. (See figure 4.) All tension should be released from spring.
3. If tension still remains on spring, disconnect spring from pivot link, slide spring up the lockout rod and back elastic stopnut off one turn.
4. Reassemble tension spring and again check to be sure spring is free from tension. Repeat step 3 until the correct condition is obtained.



## MAINTENANCE

**CUTTING BLADE** – The blade may easily be removed for grinding or replacement as follows:

1. Remove bolt and lockwasher holding blade and blade adapter to engine crankshaft.
2. Remove blade and blade adapter from engine crankshaft.
3. Remove two bolts, lockwashers and nuts holding blade to blade adapter. (If necessary.)

When sharpening blade, follow the original angle of grind as a guide. It is extremely important that each cutting edge receives an equal amount of grinding to prevent an unbalanced blade. An unbalanced blade will cause excessive vibration when rotating at high speeds and may cause damage to the mower.

Upon reassembly, make certain all parts are assembled properly and tightened securely.

**DECK** – The underside of mower deck should be cleaned after each period of use as grass clippings, leaves, dirt and other matter will accumulate. This accumulation of grass clippings, etc., is undesirable as it will invite corrosion and cause an uneven discharge of grass clippings at the next cutting.

The deck may be cleaned by tilting the mower forward or on its left side and scraping clean with a suitable tool or by washing with a stream of water from a garden hose.

**CAUTION:** Do not direct the stream of water at a hot engine as damage to the engine may result.

**STORAGE** – The following steps should be taken to prepare lawn mower for storage.

1. Clean and lubricate mower thoroughly as described in the preceding instructions.
2. Refer to engine manual for correct engine storage instructions.
3. Coat mower's cutting blade with chassis grease to prevent rusting.
4. Place blocks under deck to raise tires clear of floor.
5. Store mower in a dry, clean area.

## USING YOUR ROTARY MOWER

For best results do not cut wet grass because it tends to stick to the underside of the mower thus preventing proper discharge of grass clippings. If wet grass must be cut, reduce engine speed and walking speed to help distribute the clippings more effectively.

New grass should be treated as wet grass, otherwise a normal walking speed is about the right pace for efficient mowing.

The best mowing pattern is one that allows the clippings to discharge towards the uncut part of the lawn. This permits recutting of the clippings to further pulverize them. When cutting high weeds, discharge towards cut portion then recut at right angles to first direction.

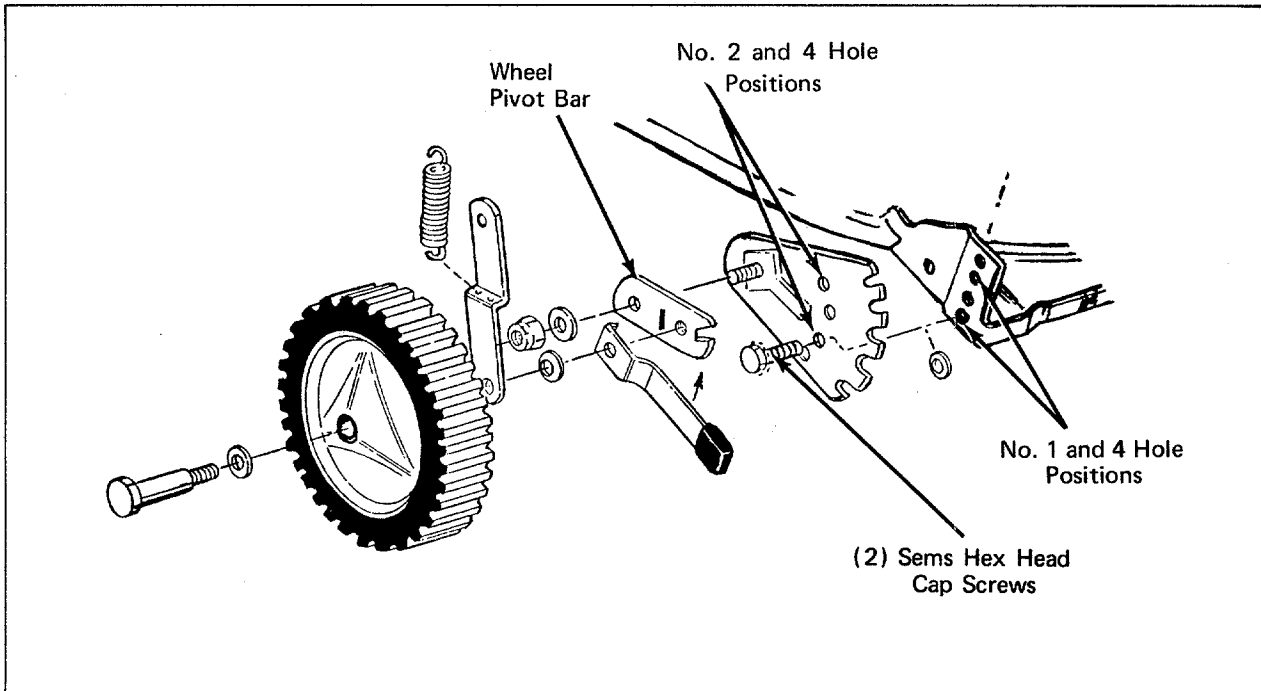
Lawn should be cut in the fall as long as there is growth.

**CAUTION:** If front wheels are removed from mower, reassembly must be made as follows:

1. Wheel pivot bar must be positioned with the notch to the front and the heavier side facing downward.

2. Sems hex head cap screws must be assembled through mounting holes one and three of index plate.

3. After sems hex head cap screws are assembled through index plate mounting holes, fasten into holes one and four in deck. This applies to both left and right sides of mower.



GRASS CATCHER Model No. 192-003 is available as optional equipment for the mower shown in this manual.

**WARNING.**

1. The mower should not be operated without the entire grass catcher or chute deflector in place.
2. The mower should not be operated without the protective shield on the rear of the deck in place.

**NOTE:**

Under normal usage bag material is subject to wear, and should be checked periodically. Be sure any replacement bag complies with the mower manufacturer's recommendations.

For replacement bags, use only factory authorized replacement bag No. 764-119.

**WARRANTY**

For one year from date of purchase, MTD Products Inc will replace for the original purchaser, free of charge, F.O.B. factory or authorized service firm, any part or parts found to be defective in material or workmanship. All transportation charges on parts submitted for replacement under this warranty must be paid by the purchaser. This warranty does not include replacement of parts which become inoperative through misuse, excessive use, accident, neglect, improper maintenance or alterations by unauthorized persons. This warranty does not include the engine, motor, battery, battery charger or any component parts thereof. For service on these units refer to the applicable manufacturer's warranty.

The above warranty will apply only to the original owner and will be effective only if the warranty card has been properly processed. It will not apply where the unit has been used commercially.

Warranty service is available through your local authorized service dealer or distributor. UNDER NO CIRCUMSTANCES WILL THE RETURN OF A COMPLETE UNIT BE ACCEPTED BY THE FACTORY UNLESS PRIOR WRITTEN PERMISSION HAS BEEN EXTENDED.



# PARTS INFORMATION

## MOWER, TILLER, SNOW THROWER AND TRACTOR PARTS

Mower, tiller, snow thrower and tractor parts are available through the authorized service firms listed below. All orders should specify the model number of your unit, parts numbers, description of parts and the quantity of each part required.

**A 1 Engine & Mower Co.**  
327 East 9th Street  
Salt Lake City, Utah 84102

**American Electric Ignition Co.**  
124 N. W. 8th Street  
Oklahoma City, Oklahoma 73102

**Auto Electric & Carburetor Co.**  
2625 4th Avenue, S.  
P. O. Box 1948  
Birmingham, Alabama 35233

**Automotive Equipment Service Co.**  
3117 Holmes Street  
Kansas City, Missouri 64109

**Bailey's Rebuild Inc.**  
1325 E. Madison Street  
Seattle, Washington 98102

**Brown Equipment Distributor Inc.**  
110 Beech Street  
Corydon, Indiana 47112

**Bullard Supply**  
2409 Commerce Street  
Houston, Texas 77003

**Center Supply Company**  
6867 New Hampshire Avenue  
Takoma Park, Maryland 20012

**R. T. Clapp Co.**  
2016 Magnolia Ave., N. E.  
Knoxville, Tennessee 37917

**W. B. Clements**  
400 Salem Avenue  
Roanoke, Virginia 24016

**Morton B. Collins Co.**  
300 Birnie Avenue  
Springfield, Massachusetts 01107

**Dixie Sales Company**  
P. O. Box 1408  
327 Battleground Avenue  
Greensboro, North Carolina 27402

**East Point Cycle & Key Shop**  
1617 Whiteway  
East Point, Georgia 30044

**Gamble Distributors**  
West End Avenue  
Carthage, New York 13619

**Garden Equipment Co., Inc.**  
6600 Cherry Avenue  
Long Beach, California 90805

**Henzler, Inc.**  
2015 Lemay Ferry Road  
St. Louis, Missouri 63125

**Frank E. Ives & Son**  
1101 Lincoln Avenue  
Prospect Park, Pennsylvania 19076

**J. W. Jewett Co.**  
981 Folsom Street  
San Francisco, California 94107

**Kenton Supply**  
8216 North Denver Avenue  
Portland, Oregon 97217

**Kimber's Inc.**  
615 W. Genesee Street  
Syracuse, New York 13204

**Marr Brothers**  
423 E. Jefferson  
Dallas, Texas 75203

**Mathews Auto Electric Co.**  
420 East 2nd Street  
Tulsa, Oklahoma 74120

**McClure Lawn & Garden Supply**  
1114 Lexington Avenue  
Mansfield, Ohio 44907

**Memphis Cycle & Supply Co.**  
421 Monroe Avenue  
Memphis, Tennessee 38103

## ENGINE PARTS AND SERVICE

Engine parts and service should be handled by your nearest authorized engine service firm. Check the yellow pages of your telephone directory under the listing *Engines - Gasoline*, Briggs and Stratton or Tecumseh Lauson - Power Products.

**Moz-All of Florida, Inc.**  
365 Greco Avenue  
Coral Gables, Florida 33146

**National Central, Div. of Joe Sterling, Inc.**  
Drawer "D" 687 Seville Rd.  
Wadsworth, Ohio 44281

**Power Equipment Distributor**  
36463 So. Gratiot Avenue  
Mt. Clemens, Michigan 48043

**Parts & Sales Inc.**  
335 West St. Charles Road  
Villa Park, Illinois 60181

**Power Lawn & Garden Equip. Co.**  
2551-2571 J. F. Kennedy Road  
Dubuque, Iowa 52001

**Raub Supply Company**  
James & Mulberry Sts.  
Lancaster, Pennsylvania 17604

**Radco Distributors**  
2403 Market Street  
P. O. Box 3216  
Jacksonville, Florida 32206

**Richmond Battery & Ignition**  
P. O. Box 25369 - 957 Myers St.  
Richmond, Virginia 23260

**Smith Hardware Company**  
515 N. George Street  
Goldsboro, North Carolina 27530

**South Denver Lawn Equip. Co.**  
527 West Evans  
Denver, Colorado 80223

**Suhren Engine**  
8330 Earhart Blvd.  
New Orleans, Louisiana 70118

**Sutton's Lawn Mower Shop**  
Route 4, Box 343  
North Little Rock, Arkansas 72117

**Warner Equipment**  
7520 Lyndale Avenue, So.  
Minneapolis, Minnesota 55423