

Owner's Operating Service Instruction Manual

10¢

- ASSEMBLY
- OPERATION
- REPAIR PARTS

Model Nos.
114-112A
114-122A
114-132A
114-142AA

20" & 22" ROTARY MOWERS

WARRANTY

For one year from date of purchase, MTD Products Inc will replace for the original purchaser, free of charge, F.O.B. factory or authorized service firm, any part or parts found to be defective in material or workmanship. All transportation charges on parts submitted for replacement under this warranty must be paid by the purchaser. This warranty does not include replacement of parts which become inoperative through misuse, excessive use, accident, neglect, improper maintenance or alterations by unauthorized persons. This warranty does not include the engine, motor, battery, battery charger or any component parts thereof. For service on these units, refer to the applicable manufacturer's warranty.

The above warranty will apply only to the original owner and will be effective only if the warranty card has been properly processed. It will not apply where the unit has been used commercially.

Warranty service is available through your local authorized service dealer or distributor. **UNDER NO CIRCUMSTANCES WILL THE RETURN OF A COMPLETE UNIT BE ACCEPTED BY THE FACTORY UNLESS PRIOR WRITTEN PERMISSION HAS BEEN EXTENDED.**

I M P O R T A N T

SAFE OPERATION PRACTICES FOR WALK-BEHIND MOWERS

TRAINING

1. Read the Operating and Service Instruction Manual carefully. Be thoroughly familiar with the controls and the proper use of the equipment.
2. Never allow children to operate a power mower.
3. Keep the area of operation clear of all persons, particularly small children and pets.

PREPARATION

1. Thoroughly inspect the area where the equipment is to be used and remove all stones, sticks, wire, bones and other foreign objects.
2. Do not operate equipment when barefoot or wearing open sandals. Always wear substantial footwear.
3. Check the fuel before starting the engine. Do not fill the gasoline tank indoors, when the engine is running, or while the engine is still hot. Wipe off any spilled gasoline before starting the engine.
4. Disengage the self-propelled mechanism or drive clutch on units so equipped before starting the engine (motor).
5. Never attempt to make a wheel adjustment while the engine (motor) is running.
6. Mow only in daylight or in good artificial light.
7. Never operate the equipment in wet grass. Always be sure of your footing; keep a firm hold on the handle and walk, never run.

OPERATION

1. Do not change the engine governor settings or overspeed the engine.
2. Do not put hands or feet near or under rotating parts. Keep clear of the discharge opening at all times.
3. Stop the blade(s) when crossing gravel drive, walks or roads.
4. After striking a foreign object, stop the engine (motor), remove the wire from spark plug, thoroughly inspect the mower for any damage, and repair the damage before restarting and operating the mower.

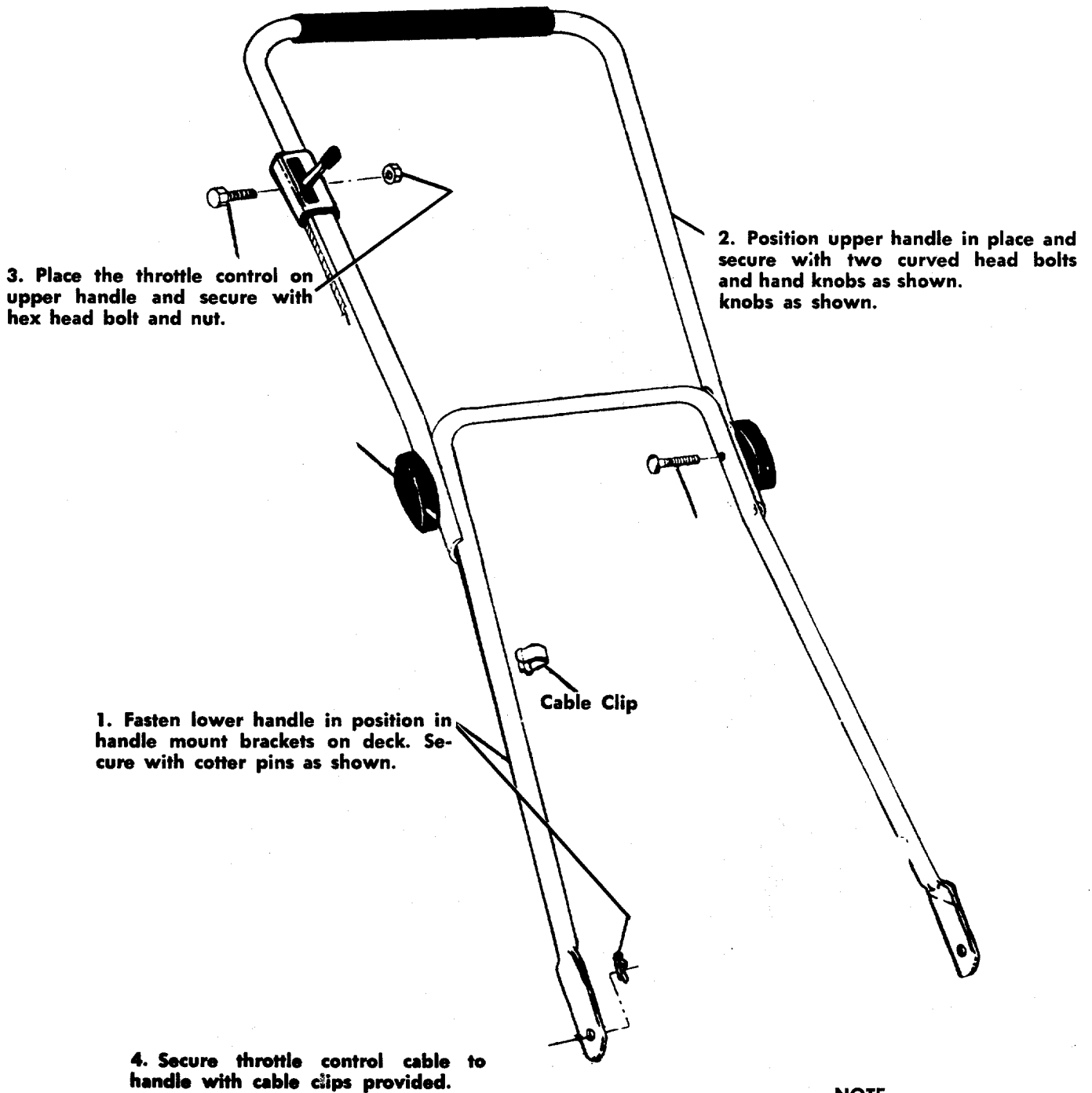
5. If the equipment should start to vibrate abnormally, stop the engine (motor) and check immediately for the cause. Vibration is generally a warning of trouble.
6. Stop the engine (motor) whenever you leave the equipment, before cleaning the mower housing, and when making any repairs or inspections.
7. When cleaning, repairing or inspecting, make certain the blade and all moving parts have stopped. Disconnect the spark plug wire, and keep the wire away from the plug to prevent accidental starting.
8. Do not run the engine indoors.
9. Shut the engine (motor) off and wait until the blade comes to a complete stop before removing the grass catcher or unclogging chute.
10. Mow across the face of slopes, never up-and-down. Exercise extreme caution when changing direction on slopes. Do not mow excessively steep slopes.
11. Always disconnect electric mowers (line operated) before cleaning, repairing or adjusting.
12. Never operate mower without proper guards, plates or other safety protective devices in place.
13. Keep washout ports and other mower-housing service openings closed when mowing.

MAINTENANCE AND STORAGE

1. Check the blade and engine mounting bolts at frequent intervals for proper tightness.
2. Keep all nuts, bolts, and screws tight to be sure the equipment is in safe working condition.
3. Never store the equipment with gasoline in the tank inside of a building where fumes may reach an open flame or spark. Allow the engine to cool before storing in any enclosure.
4. To reduce fire hazard, keep the engine free of grass, leaves, or excessive grease.
5. Check the grass catcher bag frequently for wear or deterioration. Replace with new bag for safety protection.

HANDLE ASSEMBLY FOR MODELS 114-112A AND 114-122A

NOTE: Follow instructions starting with Number 1 and continue through Number 5.



HANDLE ASSEMBLY FOR MODELS 114-132A AND 114-142A

1. Remove the loose hardware from the assembly pack. You will need a screwdriver and a 5/16" wrench, either a socket as shown in figure 1 or an open end wrench.
2. Assemble the lower handle to the handle brackets as shown in figure 2.
3. Secure the handle with cotter hairpins on both sides. See figure 2.
4. Place the handle panel over the lower handle and fasten with the handle panel screw using a 5/16" wrench. See figure 3.
5. Place the upper handle over the lower handle and line up the holes as shown in figure 4.
6. Insert the curved head bolt from the inside and tighten the knob by hand. See figure 4.
7. Place the throttle control in the handle panel and assemble it with the two throttle screws using a screwdriver. See figure 5.
8. Use the cable clip to fasten the throttle control wire to the lower handle.
9. Check ALL nuts and bolts for correct tightness.

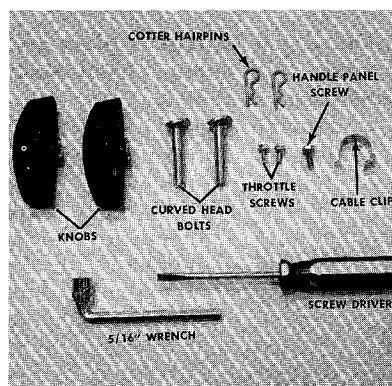


FIGURE 1.

LOOSE HARDWARE AND TOOLS

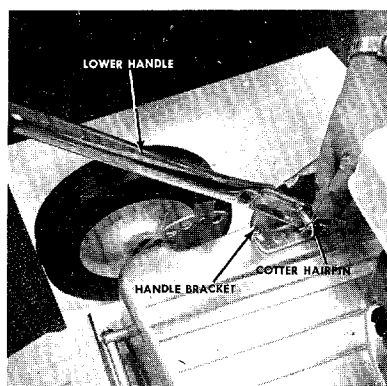


FIGURE 2.

LOWER HANDLE ASSEMBLY

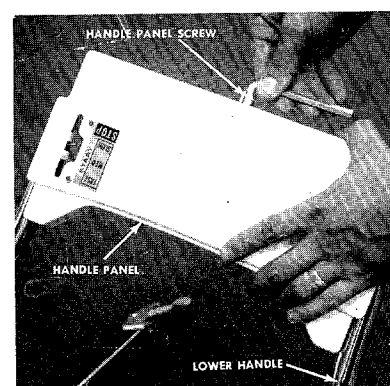


FIGURE 3.

HANDLE PANEL ASSEMBLY

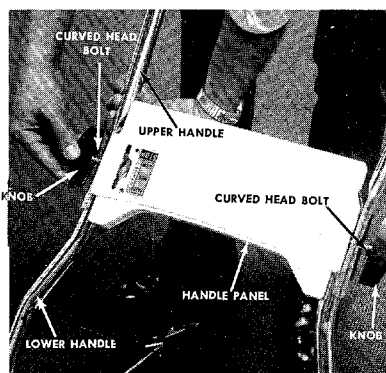


FIGURE 4.

UPPER HANDLE ASSEMBLY

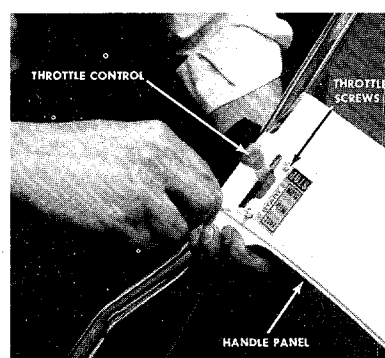


FIGURE 5.

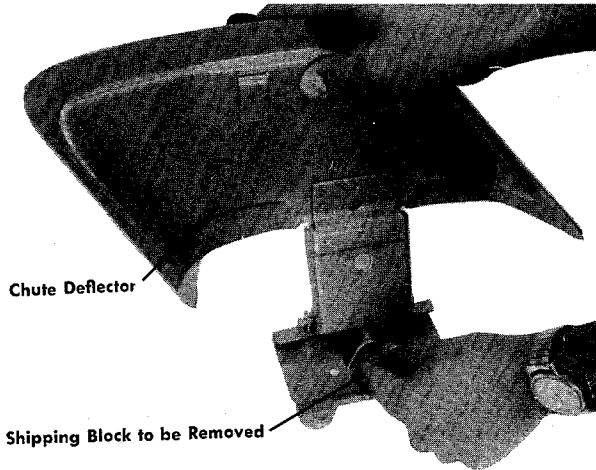
THROTTLE CONTROL ASSEMBLY

NOTE

It may be necessary to spread the ends of the lower handle outward slightly to assure a snug fit against the bracket mounting area.

CAUTION

Please note that the chute deflector on your mower is in an upright position. It is held in that position by a shipping block. This block is used for shipping purposes only. It must be removed and discarded before your mower is put into operation.



NOTE

For shipping purposes your mower is set with the wheels in a low cutting height position. For best results raise the cutting position until it is determined which height is best for your lawn. See adjustments.

1. Service engine with gas and oil. See engine manual packed with lawn mower for complete instructions for the care and maintenance of engine. **READ DIRECTIONS CAREFULLY.**
2. When ready to start engine, place throttle control lever on handle in "START" position and start engine in accordance with instructions in engine manual. After engine starts, move throttle control lever on handle to desired engine speed. The engine is stopped by placing control lever on handle in the "STOP" position.
3. Be sure that lawn is clear of stones, sticks, wire or other objects which could damage lawn mower or engine. For best results and to insure more even grass distribution, do not mow when lawn is excessively wet.

ADJUSTMENTS

CAUTION

Do not at any time make any adjustment to lawn mower without first stopping engine and disconnecting spark plug wire.

CUTTING HEIGHT

(For Models 114-112A and 114-122A)

Adjustment may be made by removing and moving wheel studs to desired position. Cutting heights will be raised as wheel studs are moved to a lower hole and lowered as wheel studs are moved to a higher hole in the deck. All wheel studs must be mounted in a relative position to the deck.

EASY CUTTING HEIGHT

(For Models 114-132A and 114-142A)

An adjusting plate and thumb lever at each wheel position provides cutting height adjustment. Each adjusting plate has five holes. Height of cut will be changed when the thumb lever is moved from one hole to another. Simply depress thumb lever towards wheel and move wheel and lever assembly to desired position. All wheels must be positioned in relative height of cut positions.

THROTTLE

If adjustment becomes necessary, the throttle control wire assembly can be reset as follows:

1. Loosen, but do not remove, screw securing throttle control wire assembly at engine.
2. Move throttle control lever on handle to "FAST" position.
3. Move lever, to which control wire is fastened at engine, to full open position and retighten screw to secure throttle control wire assembly.

LUBRICATION

IMPORTANT: Always stop engine and disconnect spark plug wire before cleaning, lubricating or doing any kind of work on lawn mower.

Wheels—Wheel bearings are of self-lubricating Fortiflex. They require no lubrication. If your unit is provided with optional ball bearing wheels, lubricate at least once a season with light oil.

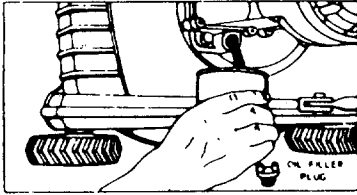
Protective Shield—The pivot points on the protective shield should be lubricated periodically with light oil to prevent any rust or binding.

Chute Deflector—The torsion spring and pivot point should be lubricated periodically with light oil to prevent any rust or binding. Deflector must work freely.

Throttle—Periodically lubricate throttle control lever and throttle wire assembly with a few drops of light oil (SAE No. 10 or 20) for ease of operation.

Engine—Follow engine manual for lubrication instructions.

**NOTE: FILL AND DRAIN OIL
FROM OIL FILL PLUG.**



Always disconnect spark plug cable during repairs, refueling or changing oil. Engine oil may be drained through oil filler opening by tilting the mower on its side. Change oil after first 5 hours of operation while engine is warm. Thereafter, change oil every 25 hours of operation while engine is warm.

MAINTENANCE

CUTTING BLADE

The blade may easily be removed for grinding or replacement as follows:

1. Remove bolt and lock washer holding blade and blade adapter to engine crankshaft.
2. Remove blade and blade adapter from engine crankshaft.
3. Remove two bolts, lock washers and nuts holding blade to blade adapter (if necessary).

When sharpening blade, follow the original angle of grind as a guide. It is extremely important that each cutting edge receives an equal amount of grinding to prevent an unbalanced blade. An unbalanced blade will cause excessive vibration when rotating at high speeds and may cause damage to the mower.

NOTE

To insure safe operation of your unit, ALL nuts and bolts must be checked periodically for correct tightness.

Deck—The underside of mower deck should be cleaned after each period of use as grass clippings, leaves, dirt and other matter will accumulate. This accumulation of grass clippings, etc., is undesirable as it will invite rust and corrosion and may cause an uneven discharge of grass clippings at the next cutting.

The deck may be cleaned by tilting the mower forward or on its side and scraping clean with a suitable tool or by washing with a stream of water from a garden hose.

CAUTION: Do not direct the stream of water at a hot engine as damage to the engine may result.

STORAGE—The following steps should be taken to prepare lawn mower for storage.

1. Clean and lubricate mower thoroughly as described in the preceding instructions.
2. Refer to Engine Manual for correct engine storage instructions.
3. Coat mower's cutting blade with chassis grease to prevent rusting.
4. Place blocks under deck to raise tires clear of floor.
5. Store mower in a dry, clean area.

USING YOUR ROTARY MOWER

For the best results do not cut wet grass because it tends to stick to the underside of the mower, thus preventing proper discharge of grass clippings. If wet grass must be cut, reduce walking speed to help distribute the clippings more effectively.

New grass should be treated as wet grass, otherwise a normal walking speed is about the right pace for efficient mowing.

The best mowing pattern is one that allows the clippings to discharge towards the uncut part of the lawn. This permits recutting of the clippings to further pulverize them. When cutting high weeds, discharge towards cut portion then recut at right angles to first direction.

Lawn should be cut in the fall as long as there is growth.

NOTE

The manufacturer DOES NOT recommend the use of any accessory on this Rotary Mower other than those manufactured by MTD Products Inc.

GRASS CATCHER Model No. 194-003A is available as optional equipment for the mowers shown in this manual.

WARNING:

1. The mower should not be operated without the entire grass catcher or chute deflector in place.
2. The mower should not be operated without the protective shield on the rear of the deck in place.

NOTE:

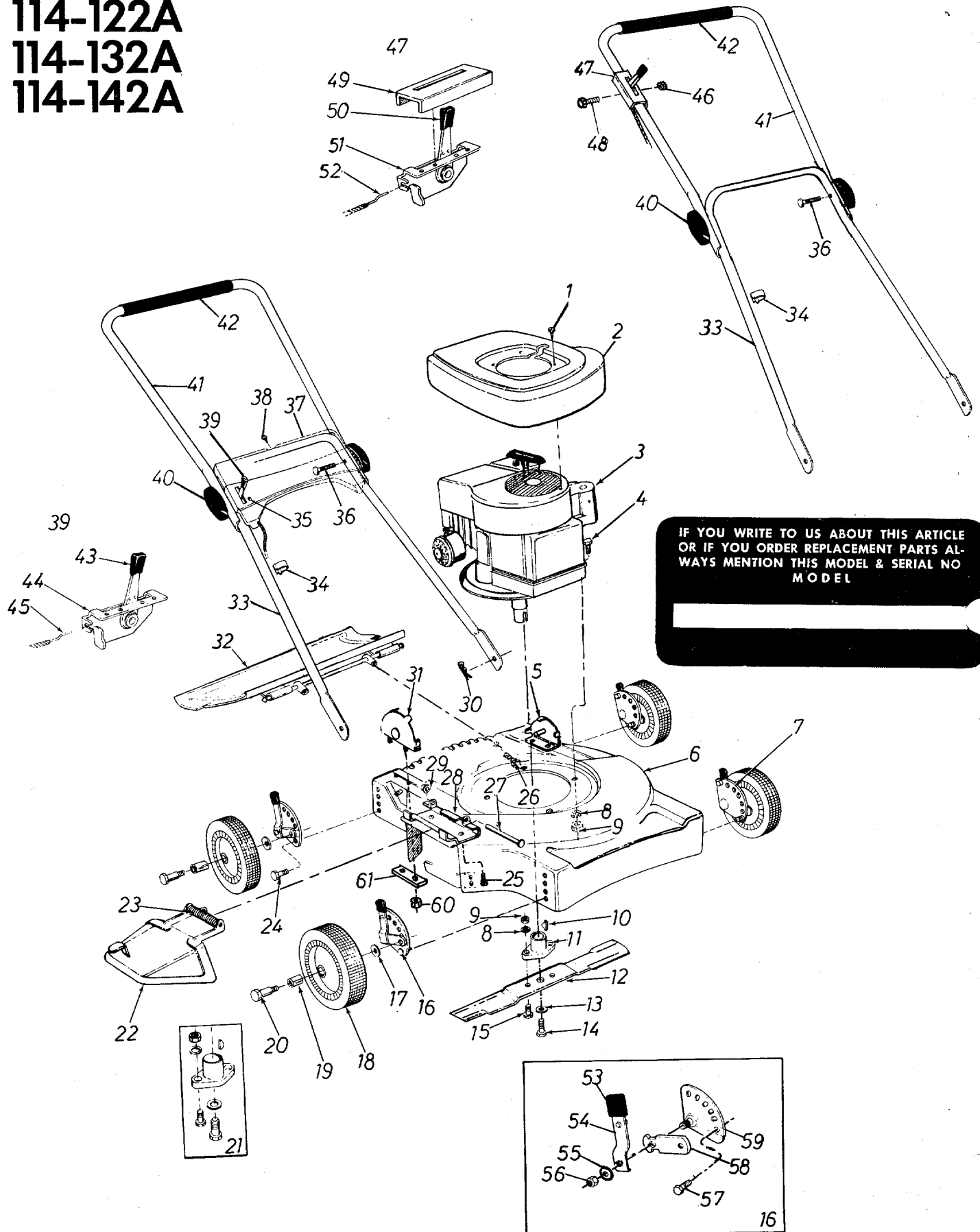
Under normal usage bag material is subject to wear and should be checked periodically. Be sure any replacement bag complies with the mower manufacturer's recommendations.

For replacement bags, use only factory authorized replacement bag No. 764-119.

★ IMPORTANT

After striking a foreign object, stop the engine (motor), remove wire from spark plug. Thoroughly inspect the mower for any damage, and repair the damage before restarting and operating the mower.

114-112A
 114-122A
 114-132A
 114-142A



IF YOU WRITE TO US ABOUT THIS ARTICLE
 OR IF YOU ORDER REPLACEMENT PARTS AL-
 WAYS MENTION THIS MODEL & SERIAL NO
 MODEL

PARTS LIST FOR MODELS 114-112A, 114-122A, 114-132A AND 114-142A

Ref. No.	Part No. 114-112A	Color Code	Part No. 114-122A	Color Code	Part No. 114-132A	Color Code	Part No. 114-142A	Color Code	Description
1	710-407		710-407		710-407		710-407		Slot Hex Hd. Self Extr. Scr. #8-32 x .50" Lg.
2	10611		10611		10612		10612		Shroud
3	—		—		—		—		Engine
4	710-158		710-158		710-158		710-158		Hex Scr. 5/16-24 x 1.25" Lg.*
5	8389		8389		8389		8389		Handle Mount Bracket Ass'y. L.H.
6	11410-458		11412-458		11410-458		11412-458		Deck Assembly Complete
7	None		None		10950		10950		Height Adjuster Ass'y. Comp.—L.H.
8	736-119		736-119		736-119		736-119		L-Wash. 5/16" Scr.*
9	712-123		712-123		712-123		712-123		Hex Nut 5/16-24 Thd.*
10	714-365		714-365		714-365		714-365		#6 Hi-Pro Key 5/32 x 3/8" Dia.
11	10769		10769		10769		10769		Blade Adapter Kit
12	742-123		742-125		742-123		742-125		Blade
13	736-217		736-217		736-217		736-217		L-Wash. 3/8" Scr. Heavy Duty
14	710-459		710-459		710-459		710-459		Hex Scr. 3/8-24 x 1.50" Lg. H.T.
15	710-117		710-117		710-117		710-117		Hex Scr. 5/16-24 x 1.00" Lg. H.T.
16	None		None		10951		10951		Height Adjuster Ass'y.—Comp.—R.H.
17	736-105		736-105		736-105		736-105		Belleville Wash. .400" I.D. x .88" O.D.
18	9392-502		9392-501		9392-502		9392-501		Wheel Ass'y. Complete
19	7006		7006		7006		7006		Fortiflex Bearing
20	738-213		738-213		738-102		738-102		Axle Bolt
21	10769		10769		10769		10769		Blade Adapter Kit
22	11141-458		11141-458		11141-458		11141-458		Chute Deflector Ass'y.
23	732-253		732-253		732-253		732-253		Torsion Spring
24	None		None		710-209		710-209		Hex Sems Scr. 3/8-16 x .62" Lg.*
25	710-289		710-289		710-289		710-289		Hex Scr. 1/4-20 x .50" Lg.*
26	710-567		710-567		710-567		710-567		Hex Scr. 1/4-28 x .62" Lg.*
27	711-555		711-555		711-555		711-555		Pivot Pin
28	11130-458		11130-458		11130-458		11130-458		Adapter Plate
29	726-106		726-106		726-106		726-106		Palnut 1/4" Rod
30	714-104		714-105		714-104		714-104		Inter. Cotter Pin 5/16"
31	8388		8388		8388		8388		Handle Mount Bracket Ass'y.—R.H.
32	11196-458		11197-458		11193-458		11197-458		Rear Protective Shield Ass'y. Comp.
33	11615		11615		10970		10970		Lower Handle
34	746-128		746-128		746-128		746-128		Cable Clip
35	None		None		710-407		710-407		Slot Hex Hd. Self Extr. Scr. #8-32 x .50" Lg.
36	710-405		710-405		710-405		710-405		Curved Carriage Bolt 5/16-18 x 1.75" Lg.
37	None		None		11606		11606		Handle Panel
38	None		None		710-148		710-148		Hex Wash. Hd. F-Tapp Scr. #8-32 x .38" Lg.
39	See Ref. 47		See Ref. 47		11610		11610		Throttle Control Ass'y. Comp.
40	9966		9966		9966		9966		Hand Knob
41	11204		11204		10011		10011		Upper Handle
42	718-144		718-144		718-144		718-144		Grip
43	See Ref. 50		See Ref. 50		7470		7470		Throttle Control—Knob
44	See Ref. 51		See Ref. 51		11598		11598		Throttle Control Ass'y.
45	See Ref. 52		See Ref. 52		746-232		746-232		Conduit and Wire
46	712-107		712-107		None		None		Hex Center L-Nut 1/4-20 Thd.
47	11601		11601		See Ref. 39		See Ref. 39		Throttle Control Ass'y. Comp.
48	710-606		710-606		None		None		Hex Scr. 1/4-20 x 1.50" Lg.*
49	731-180		731-180		None		None		Plastic Label
50	7470		7470		See Ref. 43		See Ref. 43		Throttle Control—Knob
51	11598		11598		See Ref. 44		See Ref. 44		Throttle Control Ass'y.
52	746-229		746-229		See Ref. 45		See Ref. 45		Conduit and Wire
53	None		None		7520		7520		Knob—Height Adj.
54	None		None		10949		10949		Spring Lever Ass'y. w/Knob
55	None		None		736-219		736-219		Belleville Wash.
56	None		None		712-116		712-116		Elastic Stopnut
57	None		None		710-209		710-209		Hex Sems Scr. 3/8-16 x .62" Lg.*
58	None		None		10937		10937		Pivot Bar
59	None		None		10934		10934		Index Plate Ass'y.—R.H.
	None		None		10935		10935		Index Plate Ass'y.—L.H.
60	712-107		712-107		712-107		712-107		Hex Center L-Nut 1/4-20 Thd.
61	8405		8405		8405		8405		Reinforcement Plate
	11679-458		11679-458		11679-458		11679-458		Chute Deflector Ass'y. Comp. (Includes Ref. Nos. 27, 28, 29, 22 and 23)

*For faster service obtain standard nuts and bolts locally. If these items cannot be obtained locally, order by part number and size as shown on the parts list.

(458—Arctic Blue)

When ordering parts, if color or finish is important use the appropriate color code shown above (e.g. Arctic Blue—11410 (458)).

PARTS INFORMATION

DEFECTIVE OR MISSING PARTS must be reported to the factory immediately. Such claims must include your model number and date of purchase.

POWER EQUIPMENT PARTS AND SERVICE

Parts and service for all MTD manufactured power equipment are available through the authorized service firms listed below. All orders should specify the model number of your unit, parts numbers, description of parts and the quantity of each part required.

- A 1 Engine & Mower Co.**
327 East 9th Street
Salt Lake City, Utah 84102
- American Electric Ignition Co.**
124 N. W. 8th Street
Oklahoma City, Oklahoma 73102
- Auto Electric & Carburetor Co.**
2525 4th Avenue, S.
P. O. Box 1948
Birmingham, Alabama 35233
- Automotive Equipment Service Co.**
3117 Holmes Street
Kansas City, Missouri 64109
- Bailey's Rebuild Inc.**
1325 E. Madison Street
Seattle Washington 98102
- Bleckie, Inc.**
7900 Lorain Avenue
Cleveland, Ohio 44102
- Brown Equipment Distributor Inc.**
110 Beech Street
Corydon, Indiana 47112
- Bullard Supply**
2409 Commerce Street
Houston, Texas 77003
- Carl A. Anderson Co.**
623 S. 16th Street
Omaha, Nebraska 68102
- Catto & Putty, Inc.**
P. O. Box 2408
510 Soledad Street
San Antonio, Texas 78205
- Center Supply Company**
6867 New Hampshire Avenue
Takoma Park, Maryland 20012
- Dixie Sales Company**
P. O. Box 1408
327 Battleground Avenue
Greensboro, North Carolina 27402
- East Point Cycle & Key Shop**
1617 Whiteway
East Point, Georgia 30044

- Gamble Distributors**
West End Avenue
Carthage, New York 13619
- Garden Equipment Co., Inc.**
6600 Cherry Avenue
Long Beach, California 90805
- Gardenville Supply, Inc.**
Pipersville, Pennsylvania 18947
- Henry W. O'Neil & Assoc., Inc.**
410 North Goodman Street
Rochester, New York 14609
- Henzler, Inc.**
2015 Lemay Ferry Road
St. Louis, Missouri 63125
- Kenton Supply**
8216 North Denver Avenue
Portland, Oregon 97217
- Kimber's Inc.**
115 W. Geddes St.
Syracuse, New York 13204
- The Lawnmower Shop**
1340 El Camino Real
San Carlos, California 94070
- Marr Brothers**
423 E. Jefferson
Dallas, Texas 75203
- Mathews Auto Electric Co.**
420 East 2nd Street
Tulsa Oklahoma 74120
- McClure Lawn & Garden Supply**
1114 Lexington Avenue
Mansfield, Ohio 44907
- Memphis Cycle & Supply Co.**
421 Monroe Avenue
Memphis Tennessee 38103
- Morton B. Collins Co.**
300 Birnie Avenue
Springfield, Massachusetts 01107
- Moz-All of Florida, Inc.**
365 Greco Avenue
Coral Gables, Florida 33146

BRIGGS & STRATTON, TECUMSEH AND PEERLESS PARTS AND SERVICE

Briggs & Stratton, Tecumseh and Peerless parts and service should be handled by your nearest authorized engine service firm. Check the yellow pages of your telephone directory under the listing *Engines — Gasoline*, Briggs & Stratton or Tecumseh Lauson — Power Products.

- National Central, Div. of Joe Sterling, Inc.**
Drawer "D" 687 Seville Rd.
Wadsworth, Ohio 44281
- Parts & Sales Inc.**
2101 Industrial Pkwy.
Elkhart, Indiana 46514
- Power Equipment Distributor**
36463 So. Gratiot Avenue
Mt. Clemens, Michigan 48043
- Power Lawn & Garden Equip. Co.**
2551-2571 J. F. Kennedy Road
Dubuque, Iowa 52001
- Radco Distributors**
2403 Market Street
P. O. Box 3216
Jacksonville, Florida 32202
- Raub Supply Company**
James & Mulberry Sts.
Lancaster, Pennsylvania 17604
- Richmond Battery & Ignition**
P. O. Box 25369 — 957 Myers St.
Richmond, Virginia 23260
- Smith Hardware Company**
515 N. George Street
Goldsboro, North Carolina 27530
- South Denver Lawn Equip. Co.**
527 West Evans
Denver, Colorado 80223
- Suhren Engine**
8330 Earhart Blvd.
New Orleans, Louisiana 70118
- Sutton's Lawn Mower Shop**
Route 4, Box 343
North Little Rock, Arkansas 72117
- Warner Equipment**
7520 Lyndale Avenue, So.
Minneapolis, Minnesota 55423
- Woodson Sales & Service**
1702 North Sylvania
Ft. Worth, Texas 76111

WARRANTY PARTS AND SERVICE POLICY

The purpose of warranty is to protect the customer from defects in workmanship and materials, defects which are NOT detected at the time of manufacture. It does not provide for the unlimited and unrestricted replacement of parts. Use and maintenance are the responsibility of the customer. The manufacturer cannot assume responsibility for conditions over which it has no control. Simply put, if it's the manufacturer's fault, it's the manufacturer's responsibility; if it's the customer's fault, it's the customer's responsibility.

CLAIMS AGAINST THE MANUFACTURER'S WARRANTY INCLUDES

1. Replacement of Missing Parts on new equipment.
2. Replacement of Defective Parts within the warranty period.
3. Repair of Defects within the warranty period.

All claims MUST be substantiated with the following information:

1. Model Number of unit involved.
2. Date unit was purchased or first put into service.
3. Date of failure.
4. Nature of failure.