



KNIGHT

STATIONARY PARTS MANUAL **REEL AUGGIE MIXER** **MODELS 3125/3130**

Table of Contents

Abbreviations	2
Using This Service Parts Listing	3
Front End and Subframe Parts	4
Front Drive Parts	6
Chains and Tighteners	8
Door Parts	9
Reel and Auger Parts - 3125 Only	10
Reel and Auger Parts - 3130 Only	12
Top Guard Parts	14
HAY MAXX System	15
Scale Parts	16
Repair Liner Parts	18
Decals	19
Paint	19
Hardware Part Number Listing	20
Part Number Listing	22

Catalog Part Number 006054 Unit Serial Number _____

Operator Instruction Manual for this unit: 006046

Abbreviations

Assy	Assembly
A/R	As Required
B	Bolt
Brg	Bearing
BSN	Before Serial Number
Btm	Bottom
C-Bolt	Carriage Bolt
Cttr	Cotter
CV	Constant Velocity
Deg	Degree
Dia	Diameter
ea	Each
eq or Equiv	Equivalent
Fln	Flanged Lock Nut
Fw	Flat Washer
Ga	Gauge
Gr or Grd	Grade
Hd	Head
Hfw	Heavy Flat Washer
Hyd	Hydraulic
ID	Inside Diameter
Ill or Illus	Illustration
Ind	Indicator
Jn	Jam Nut
Kw	Keyway
LH	Left Hand
Ln	Lock Nut
Lw	Lock Washer
Mtg Hrd	Mounting Hardware
NC	National Coarse
NF	National Fine
NLA	No Longer Available
NPT	National Pipe Thread
OD	Outside Diameter
Pc(s)	Piece(s)
PD	Pitch Diameter
PTO	Power Takeoff (shaft)
Qty	Quantity
RH	Right Hand
SN	Serial Number
SHCS	Socket Head Cap Screw
Spk, or Spkt or Sprkt	Sprocket
Sq	Square
SS	Stainless Steel
SSB	Stainless Steel Bolt
St	Straight
Std	Standard
STS	Self Tapping Screw
UASN	Used After Serial Number
UBSN	Used Before Serial Number
W	With
W/O	With Out

Using This Service Parts Listing

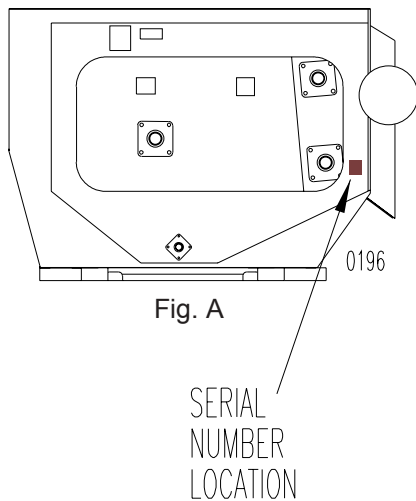
This listing uses a number indentation system to specify the parts of an assembly. Any number which is indented to the right, indicates that it is a component of the item to the upper left. Example:

<u>Part no</u>	<u>Qty</u>	<u>Description</u>
102-AAA	#	Assembly A
102-BBB	#	Sub-Assembly B
(Component of A)		
140-xxx	#	Sub-Component of B
140-xxx	#	Sub-Component of B
102-CCC	#	Sub-Assembly C
(Component of A)		
etc.		

Using this system, the subassemblies and their components are included if an **Assembly** is ordered. Similarly, the components of a subassemblies are included if a subassembly is ordered.

The quantity (Qty) associated with an assembly, represents the number of times an assembly could be shown in the drawing. The subassembly quantity however, is the number of times a subassembly is used to build one assembly. Similarly, the component quantity refers to the number of times a given component is found in one subassembly.

MODEL AND SERIAL NUMBER INFORMATION is located near the front left hand corner (Fig. A). The model number, serial number and part number should be known when asking service personnel for parts.



The serial number may consist of a number, or a number with a letter prefix. When referring to serial number breaks in the text of this manual, a serial number with a prefix will have been manufactured after a serial number without a prefix (A001 made after 0123). Likewise, a higher prefix letter would indicate manufacture after a lower prefix letter (B001 made after A123). Therefore, if the text refers to units manufactured after serial number B123, this would include "B" series numbers greater than 123, and all numbers with a higher letter prefix.

If you cannot find the part you need, be as descriptive as possible when placing an order:

Sprockets: give the bore size, number of teeth, and size of keyway.

Roller chain: give the size of chain (stamped on the side of each link) and number of links.

Shafting: give the diameter, length, and quantity and size of keyways.

Hardware is generally not included with parts. If you need any hardware, check the size, the length, and the grade (Fig. B), then check the hardware list in this manual for the part numbers.

All hex head bolts are grade 5, and nuts are grade 5 unless otherwise stated.

The hardware listing also includes zerks, cotter pins, set screws, and roller chain links.

The illustrations in this manual are meant to be used only as a guide for identifying parts and locating their relative positions.

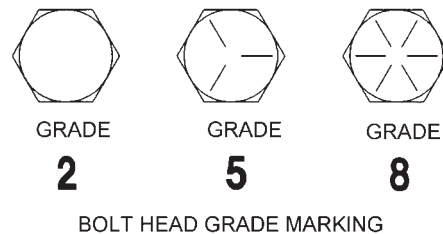
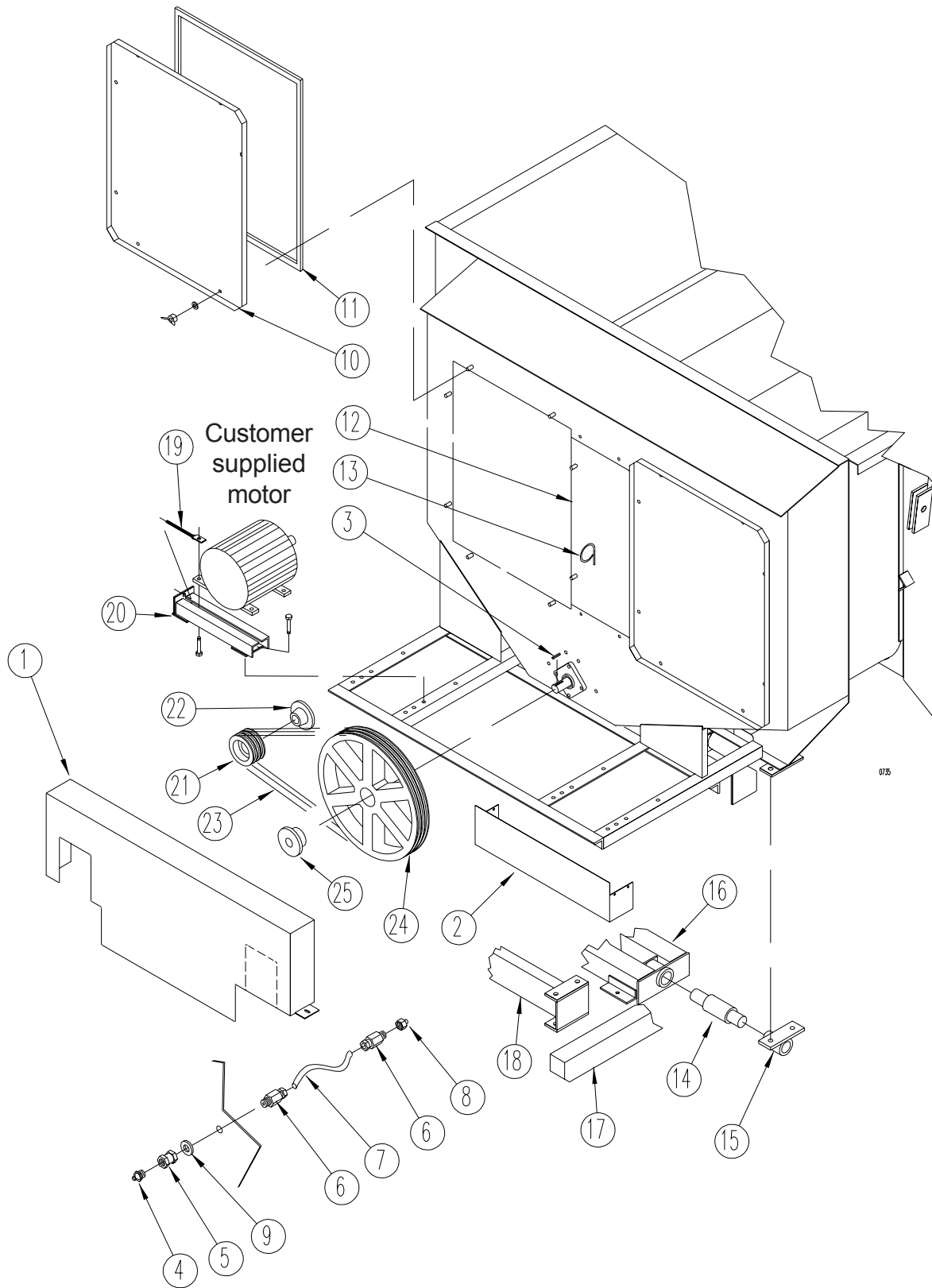


Fig. B

Front End and Subframe Parts



075

Front End and Subframe Parts

REF	PART NO	QTY	DESCRIPTION
1	102-550	1	Upper Shield; Mtg Hrd: 3/8" x 1 1/4" B, Fw, Lw & Nut (2 ea)
2	136-867	1	Lower Shield; Mtg Hrd: 1/4" x 3/4" B, Lw, N (4 ea) Fw (8 ea)
3	170-627	1	Key, SQ 5/16" x 1 3/4"
GREASE LINES			
4	170-865	1*	Grease Zerk 1/8" NPT
5	172-024	1*	Coupling
6	172-822	2*	Compression Fitting
7	180-630**		Grease Line Tubing
		18"	Required for upper auger bearing
		16"	Required for lower auger bearing
		23"	Required for front reel bearing
		21"	Required for inner input shaft bearing
		21"	Required for outer input shaft bearing
8	172-823***	1*	Adapter Fitting; 1/4" SAE x 1/8" NPTF
9	170-244	1*	Flat Washer 3/8"
10	136-835	2	Safety Shield; Front Drive; Mtg Hrd: 3/8" NC Wing Nut (171-929) & Fw (8ea)
11	171-935**	10'6"	Front Shield Gasket; 3/8" x 3/4" Closed Cell Foam (QTY PER SHIELD)
12	136-837	1	Sheet, Center Panel; Mtg Hrd: 3/8" x 7/8" Bolt, Fw, Lw, N
13	134-900	1	Hose Hanger (weld on)
14	172-138*	4	Weigh Bar; 2 1/8" Dia (J-star-black finish)
	173-230*	4	Weigh Bar; 2 1/8" Dia (Weigh-tronix-white finish)
15	101-742	4	Weigh Bar Mount Spool; Mtg Hrd To Unit: 5/8" x 1 3/4" Bolt, Fw & Ln (2 ea)
16	101-771	2	Weigh Bar Mount
17	171-819	2	Skid Rail; 3" x 4" x 168" (3125); Mtg Hrd: 3/8" x 4 1/2" C-Bolt, Fw, Nut
	134-890	2	Skid Rail; 3" x 4" x 191 3/4" (3130); Mtg Hrd: 3/8" x 4 1/2" C-Bolt, Fw, Nut
18	101-909	2	6" Riser (for units without minus scale); Mtg Hrd; 5/8" x 1 3/4" Bolt, Fw & Ln (4 ea)
Single motor only			
19	101-788	2	Jacking Bolt; Mtg Hrd: Nut, Fw (2 ea)
20	101-880	2	Motor Rail Assy; Mtg Hrd: Rail to frame: 1/2" x 1 1/2" B, Fw & Lw, Nut (2 ea) Rail to motor: 3/8" x 1 1/2" B, Heavy Fw, Lw, (2 ea) Fw, Nut (4 ea)
21	175-308	1	Pulley 4 Groove 4.55 OD
22	172-178	1	Bushing, 1 3/8 ID (<i>Standard on 3125 single motor only</i>)
	172-179	1	Bushing, 1 5/8 ID (<i>Standard on 3130 single motor only</i>)
23	172-161	4	Belt; Bx78-MBL
24	172-266	1	Pulley 4 Groove 20.35 OD
25	172-180	1	Bushing, 1 3/8 ID
Double motor only			
19	101-788	4	Jacking Bolt; Mtg Hrd: Nut, Fw (2 ea)
20	101-880	4	Motor Rail Assy; Mtg Hrd: Rail to frame: 1/2" x 1 1/2" B, Fw & Lw, Nut (2 ea) Rail to motor: 3/8" x 1 1/2" B, Heavy Fw, Lw, (2 ea) Fw, Nut (4 ea)
21	175-309	2	Pulley 3 Groove 4.55 OD
22	171-954	2	Bushing, 1 3/8 ID (<i>Standard on all double motor</i>)
23	172-161	4	Belt; Bx78-MBL
24	172-266	1	Pulley 4 Groove 20.35 OD
25	172-180	1	Bushing, 1 3/8 ID
Motor bushings available to fit 172-176 (motor) pulley			
	171-144	A/R	Bushing, 1 7/8 ID

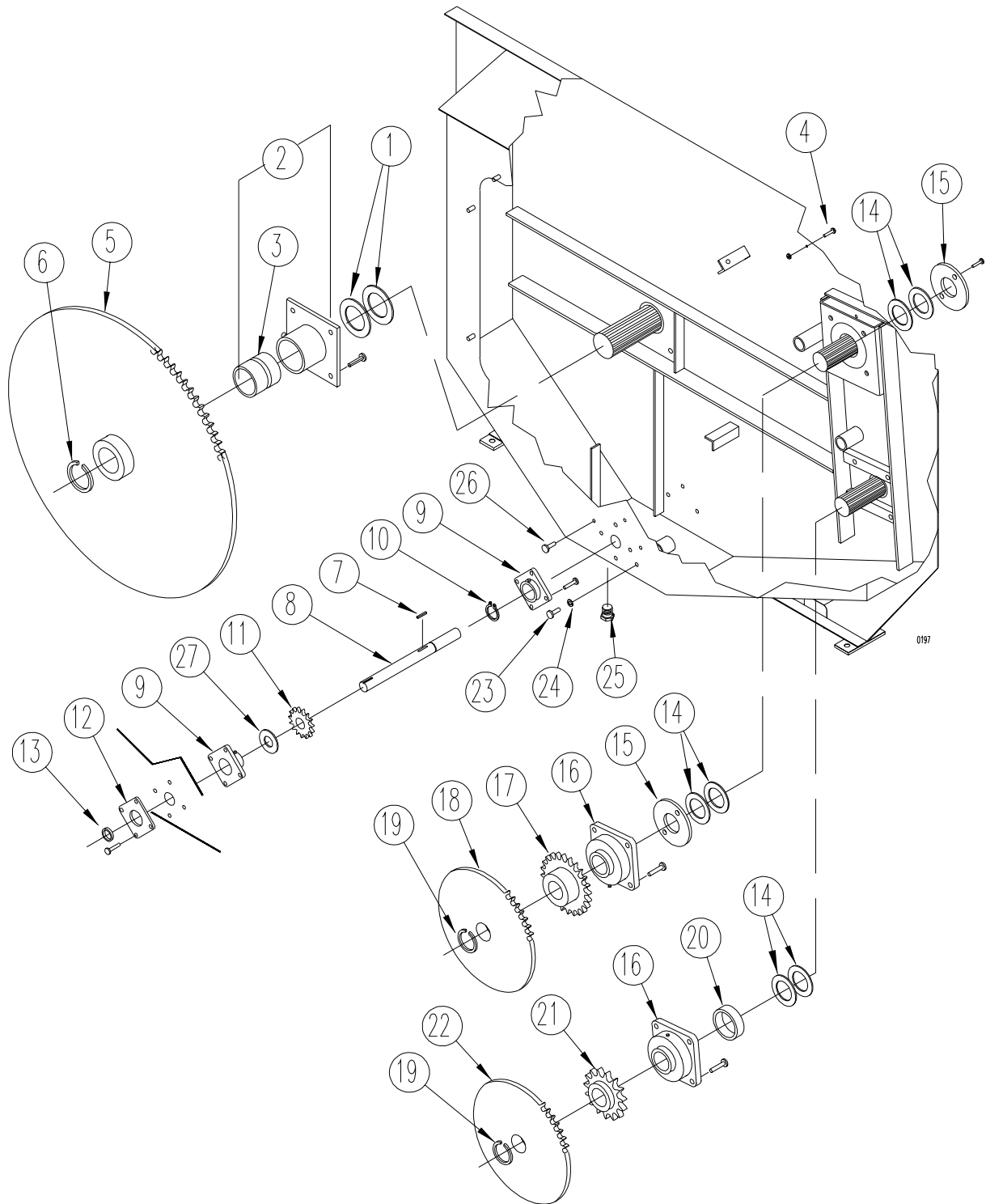
* Quantity required to complete 1 grease line assy

** Sold by the linear foot.

*** Not required on all installations

***** All (4) weigh bars must be the same type to properly function and will work with either the J-Star or Weigh-tronix indicator.

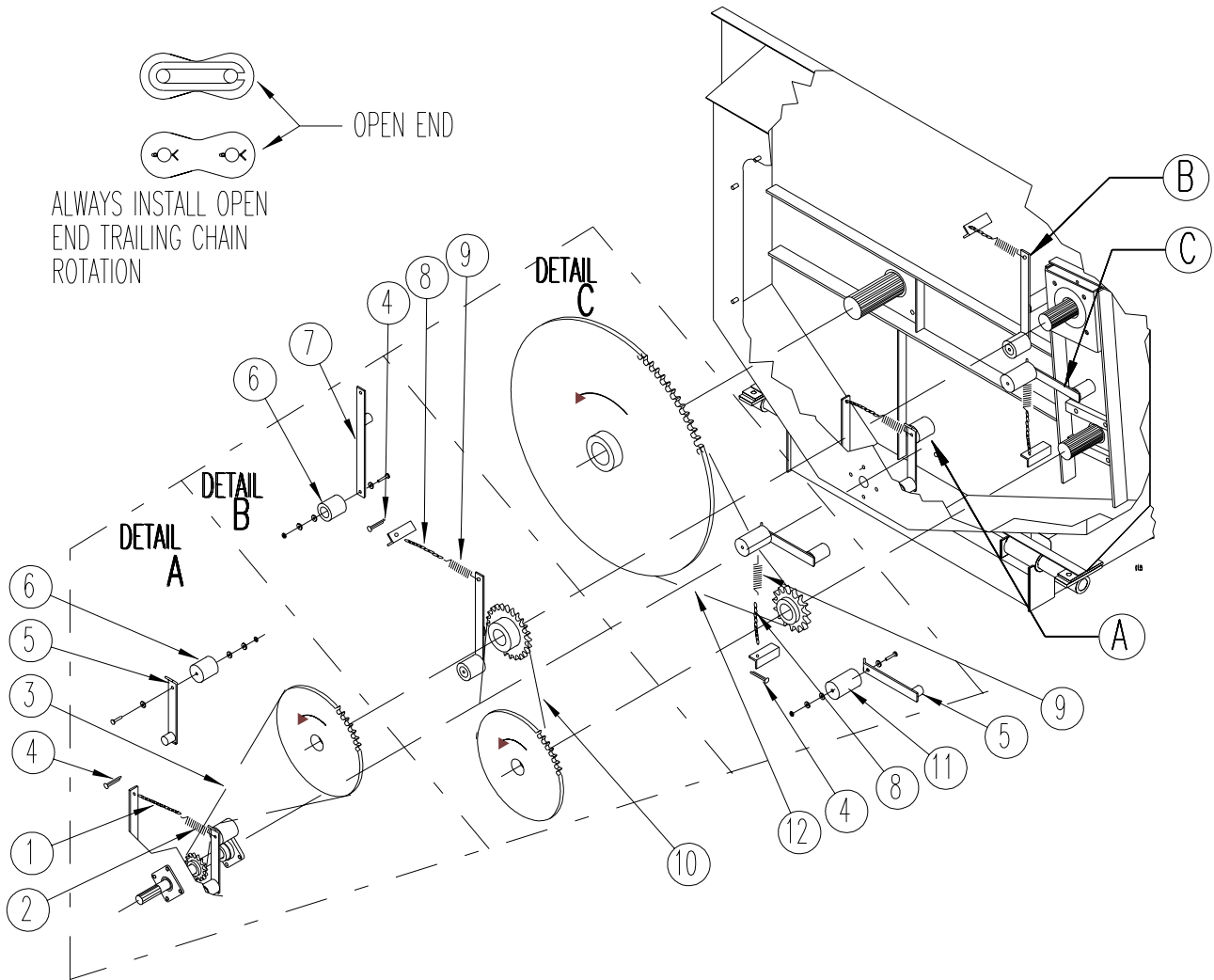
Front Drive Parts



Front Drive Parts

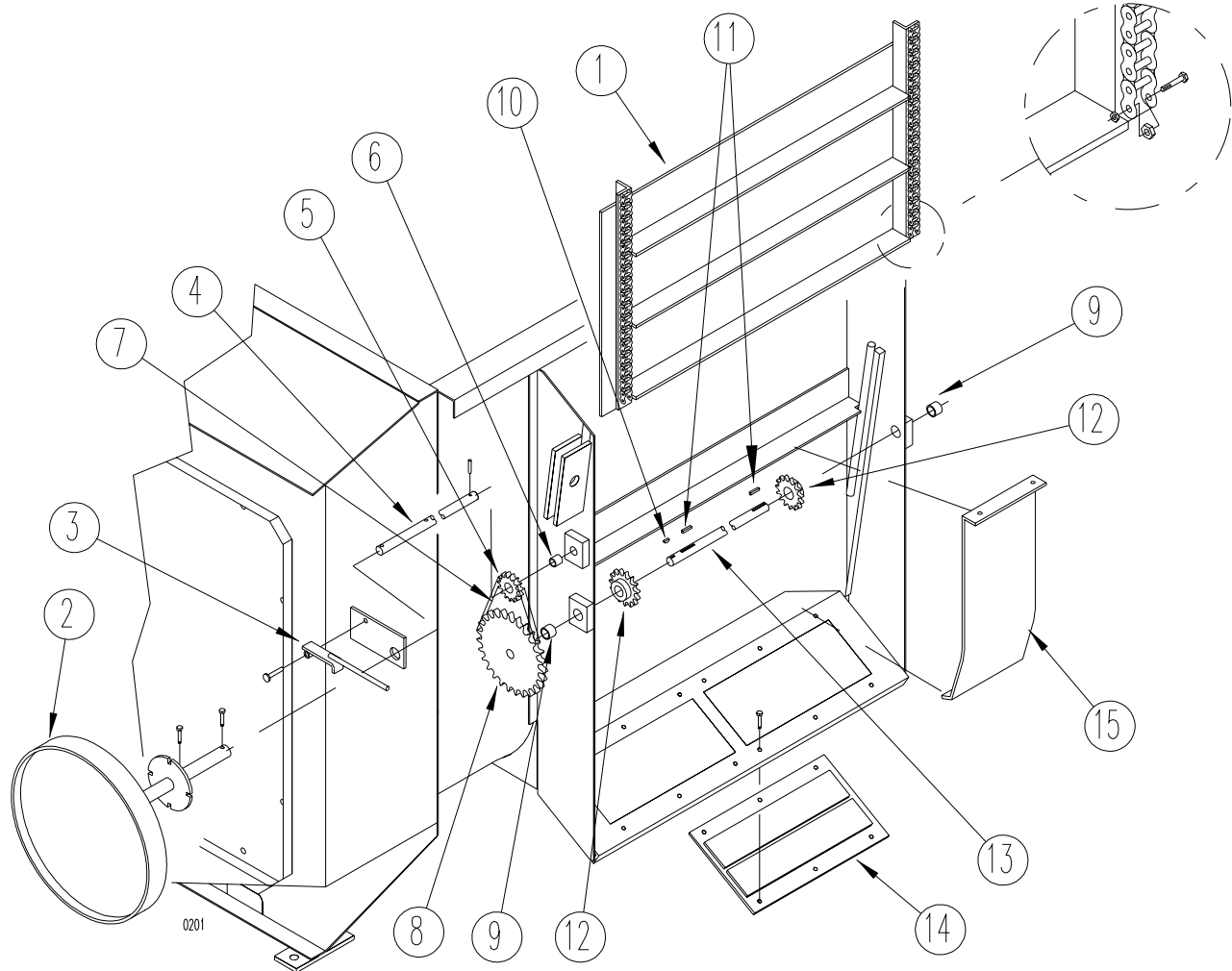
REF	PART NO	QTY	DESCRIPTION
1	135-598	2	Seal Washer, 3 1/2" ID x 4 3/4" OD
2	102-249	1	Bearing Assembly; Mtg Hrd: 5/8" x 1 1/2" Bolt, Lw, Nut
3	135-662	1	Bushing, Straight, 3 1/2" ID
4	170-373	1	Plug, (No Hay MAXX) 1/2" x 1 1/4", Ln
5	136-810	1	Sprocket; 100-B-100, 3 1/2" Splined Bore
6	171-607	1	Snap Ring, External; 3 1/2"
7	171-409	1	Key, SQ 3/8" x 1 1/4"
8	134-954	1	Input Shaft; 1 3/8" x 15 3/8"
9	171-585	2	Bearing; 1 3/8", Outer Bearing; Mtg Hrd: 1/2" x 1 3/4" Bolt, Lw & Nut (4 ea) Inner Bearing Mtg Hrd: 1/2" x 1 1/2" Bolt, Lw, Fw, Nut (3 ea)
10	170-499	1	Snap Ring, External; 1 3/8"
11	133-394	1	Sprocket; 60-B-13, 1 3/8" Bore
12	136-260	1	Seal Retainer
13	173-164	1	Seal; 1.375" ID x 1.84" OD x .25" (C/R # 13536)
14	135-597	6	Seal; 3" ID x 4 1/4" OD
15	136-836	2	Seal Housing; 6" Dia; Mtg Hrd: 5/16" x 1 1/2" Bolt, Fln (2 ea)
16	170-053	2	Bearing; 2 1/2", Mtg Hrd: Upper auger: 5/8" x 2" Bolt, Lw, Nut (4 ea) Lower auger; 5/8" x 3" Bolt, Lw, Fw, Nut (4 ea)
17	136-849	1	Sprocket; 80-B-30, 2 1/2" Splined Bore
18	136-844	1	Sprocket; 60-B-81, 2 1/2" Splined Bore
19	170-152	2	Snap Ring; External; 2 1/2"
20	136-858	1	Seal Spacer; 3" Dia x 1" LG
21	136-850	1	Sprocket; 100-B-15, 2 1/2" Splined Bore
22	136-847	1	Sprocket; 80-B-54, 2 1/2" Splined Bore
23	170-149	1	Oil Plug, 1/2" x 1"
24	172-884	1	Washer, 1/2" Nylon
25	171-919	1	Drain Plug, 1 1/4" PVC
26	170-054	3	Plug, 3/8" x 1", Fw, Lw, Nut
27	175-317	AR	Washer, Special 1.38" x 2.12" x .048"
	175-318	AR	Washer, Special 1.38" x 2.12" x .075"

Chains and Tighteners



REF	PART NO	QTY	DESCRIPTION
1	170-518	1	Machine Chain; #4 x 30 Links
2	172-005	1	Spring, Extension 6" LG x 1" OD
3	173-442	1	Roller Chain; 60H-1-192 Pitch, W/Connector Link
4	170-800	3	Clinch Pin, 3/16" x 1 1/2"
5	101-761	2	Chain Tightener Arm
6	134-155	2	Tightener Block; Mtg Hrd: 1/2" x 2 3/4" Bolt, Fw, Lw & Nut
7	101-818	1	Chain Tightener Arm
8	170-478	2	Machine Chain; #4 x 12 Link
9	172-751	2	Spring, Extension 8 1/4" LG x 1 1/2" OD
10	173-443	1	Roller Chain; 80H-1-88 Pitch, W/Connector Link
11	134-086	1	Tightener Block; Mtg Hrd: 1/2" x 4" Bolt, Fw, Lw & Nut
12	173-444	1	Roller Chain; 100H-1-130 Pitch, W/Connector Link

Door Parts



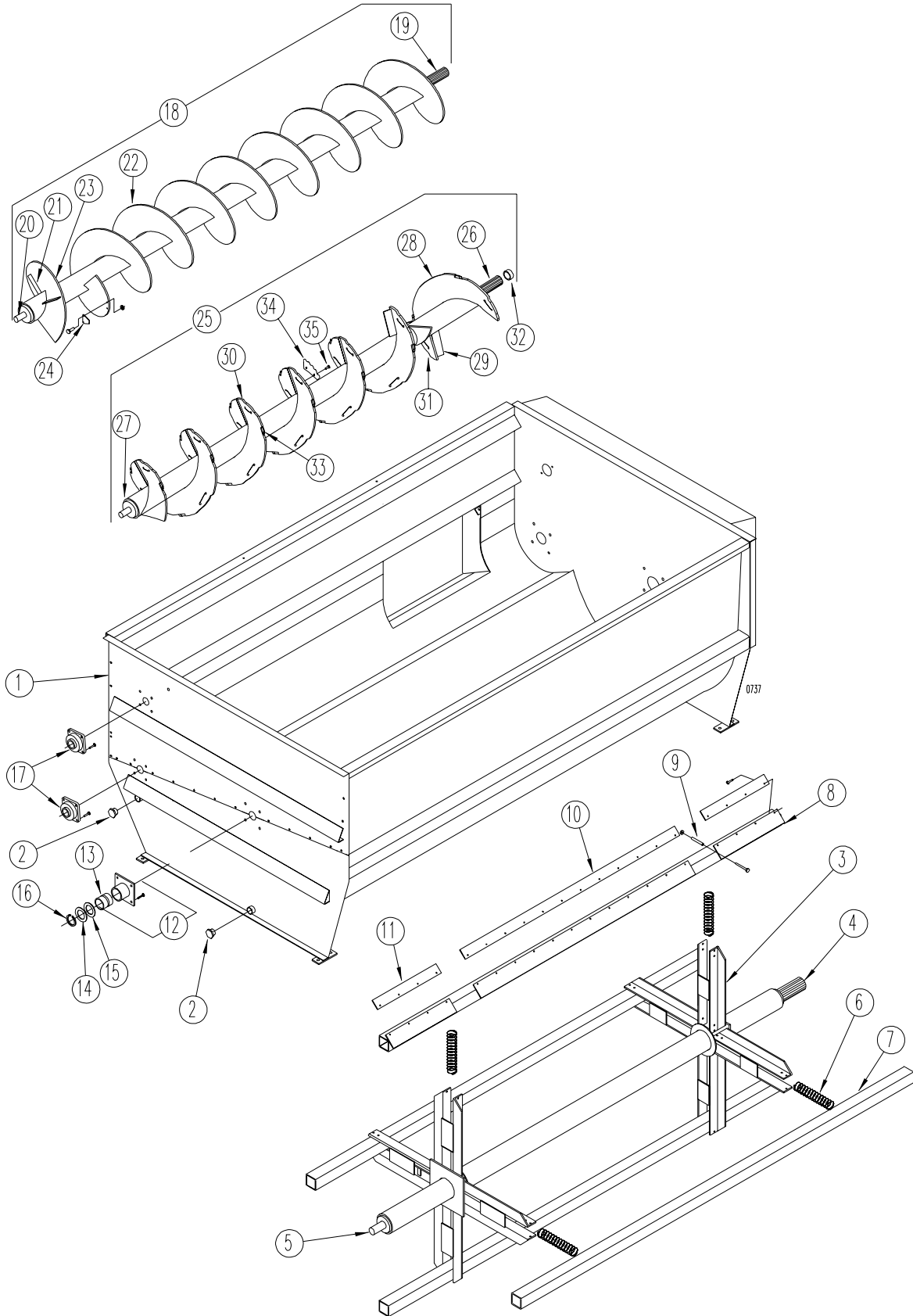
REF	PART NO	QTY	DESCRIPTION
1	102-436	1	Door Assembly; Mtg Hrd:1/4" x 1" Bolt, N, 3/8" Nut (2 ea)
2	102-086	1	Hand Wheel; Mtg Hrd:1/4" x 1 1/2" Bolt, Lw, N (2 ea)
3	102-095	1	Door Latch; Mtg Hrd: 3/8" x 2" Ln, Nut
4	136-864	1	Hand Wheel Shaft; 3/4" Dia x 21 1/2" Lg
5	135-826	1	Sprocket; 50B-10, 3/4" Bore; Mtg Hrd: 170-454;5/16" x 1 1/2" Roll Pin (1 ea)
6	170-192	1	Bushing, Straight 3/4" ID x 1" Lg
7	171-178	1	Roller Chain; 50-1-48 Pitch W/Connector Link
8	134-235	1	Sprocket; 50B-42, 1" Bore
9	170-243	2	Bushing, Straight 1" ID x 3/4" Lg
10	170-120	1	Key, Woodruff; 1/4" x 7/8"
11	171-012	2	Key, 1/4" SQ x 1 7/8"
12	130-785	2	Sprocket; 50B-12, 1" Bore
13	135-824	1	Door Shaft; 1" Dia x 39 1/4" Lg
14	171-937	2	Magnet; Mtg Hrd: 1/4" x 1" Truss Head Bolt, Fw, lw, N (6 ea)
15	136-326	2	Flow Control Plate; Mtg Hrd: 5/16" x 1" B, Lw, N (4 ea) <i>(if adding optional, holes must be drilled in shell if customer installed)</i>

Kuhn Knight, Inc.

1501 West 7th Ave., Brodhead, WI 53520

701 Cherry Ave., Greeley, CO 80632

Reel and Auger Parts - 3125 Only

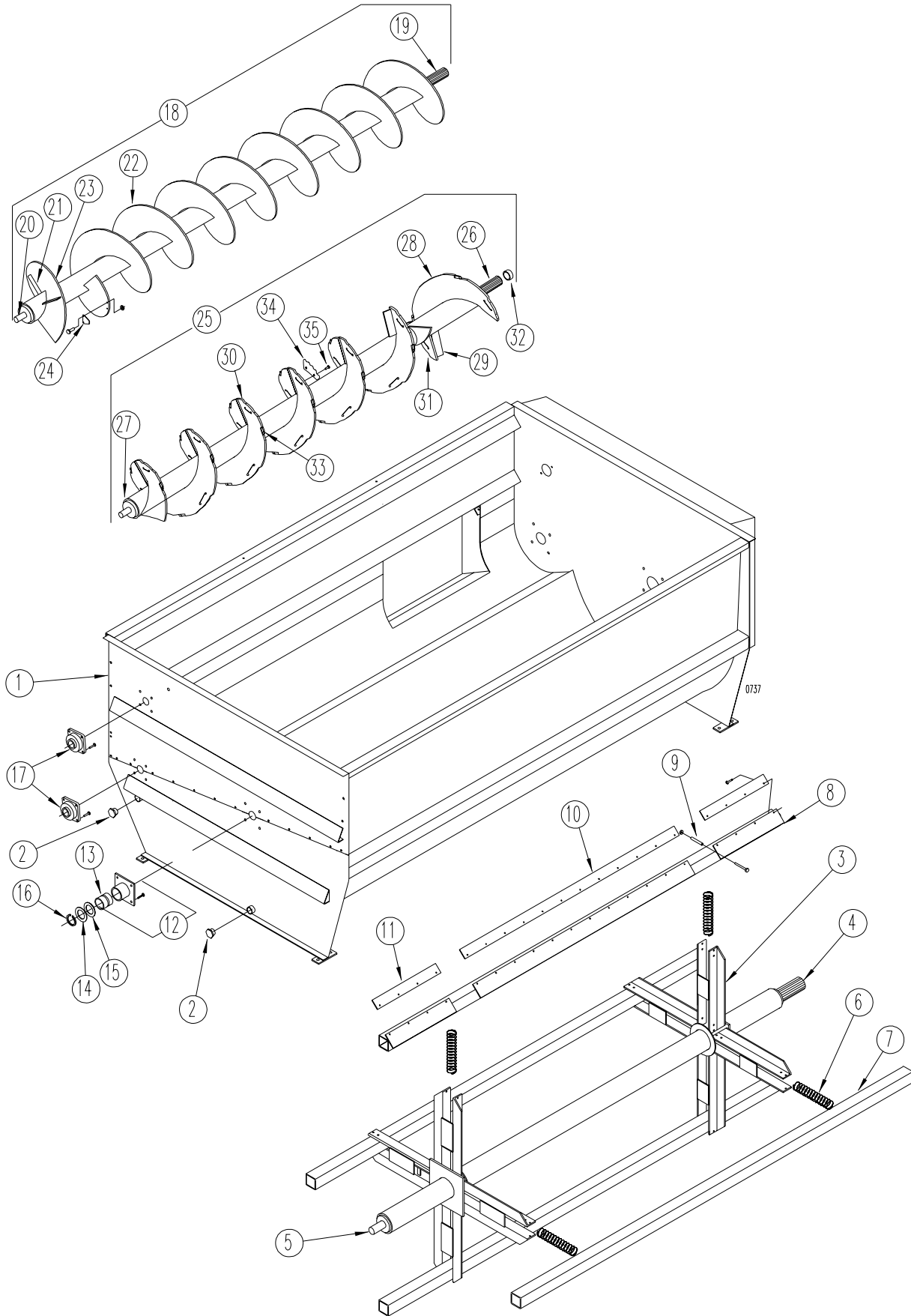


Reel and Auger Parts - 3125 Only

REF	PART NO	QTY	DESCRIPTION
1	102-535	1	Rear Panel (upper); Mtg Hrd: 5/16" x 1 B, Fw, FlN (21 ea) 1/2" x 1 1/4" B, Ln, Fw (2 ea)
2	171-919	2	Drain Plug; 1-1/4" PVC
3	102-543	1	Reel Weldment
4	102-247	1	Front Plug Assembly, 3 1/2"
5	102-251	1	Rear Plug Assembly, 2"
6	171-920	8	Spring; Reel Cross Pipe Compression, 16"LG x 2 3/8"OD
7	102-544	2	Reel Cross Pipe; Mtg Hrd: 3/8" x 5" Bolt, Lw, Nut
8	102-246	2	Cross Tube Wiper Assembly; Mtg Hrd: 3/8" x 5" Bolt, Lw, Nut
9	135-698	8	Retaining Sleeve
10	135-676	2	Plastic Wiper Blade; Long; Mtg Hrd: 1/4" x 7/8" Bolt, (171-083 Fw), Lw, Nut
11	135-675	4	Plastic Wiper Blade; Short; Mtg Hrd: 1/4" x 7/8" Bolt, (171-083 Fw), Lw, Nut
12	102-260	1	Bearing Assembly, 2"; Mtg Hrd: 5/8" x 1 1/4" Bolt, Lw, Nut
13	135-701	1	Plastic Sleeve
14	171-048	A/R	Washer, Special; 2"ID x 3"OD x .081" Thick (4 max)
15	171-049	A/R	Washer, Special; 2"ID x 3"OD x .127" Thick (4 max)
16	170-142	1	Snap Ring; 2", External
17	170-057	2	Bearing; 1 1/2", Mtg Hrd: 1/2" x 1 1/2" Bolt, Lw & Nut (4 ea)
18	102-541	1	Upper Auger Assembly
19	102-530	1	Front Plug Assembly, 2 1/2" Splined
20	102-537	1	Rear Plug Assembly, 1 1/2"
21	135-555	6	Flighting Brace, 3/8" x 1 1/2" x 5 1/2"
22	136-855	2	Flighting, RH; 14"P x 18"OD x 5 9/16ID x 3/8 THK x 53" LG
23	136-820	1	Flighting, LH; 14"P x 18"OD x 5 9/16ID x 1/4 THK x 7" LG
24	174-558	25	Knife, Sickle Section (Qty May Vary) Mtg Hrd: 5/16" x 3/4" Bolt, Lw & Nut (2 ea)
	174-558	25	Optional additional Knife Sickle Section; Mtg Hrd: 5/16" x 3/4" Bolt, Lw & Nut (2 ea)
25	104-082	1	Lower Auger Assembly
26	102-531	1	Front Plug Assembly, 2 1/2" Splined
27	102-537	1	Rear Plug Assembly, 1 1/2"
28	142-185	1	Flighting, RH; 18"P x 18"OD x 5 9/16 ID x 3/8 THK x 18" LG
29	134-547	4	Auger Gusset, 1/2" x 2" x 5 3/8"
30	142-184	5	Flighting, LH; 18"P x 18"OD x 5 9/16 ID x 3/8 THK x 18" LG
31	136-817	2	Paddle
32	136-839	1	Spacer Tube; 3" x 1/4" x 1 11/16"
33	175-781	18	Lower Auger Knife; (Weld on)
34	174-064*	3	Scallop Knife, RH; (Used on Item 12) (Qty may vary)
	174-065*	15	Scallop Knife, LH; (Used on Item 11) (Qty may vary)
35	174-093*	36	Screw, socket head, 1/2" x 1 1/2"; Mtg Hrd: 1/2" lock jam nut (Qty may vary)

*Used with Roughage Maxx option only.

Reel and Auger Parts - 3130 Only

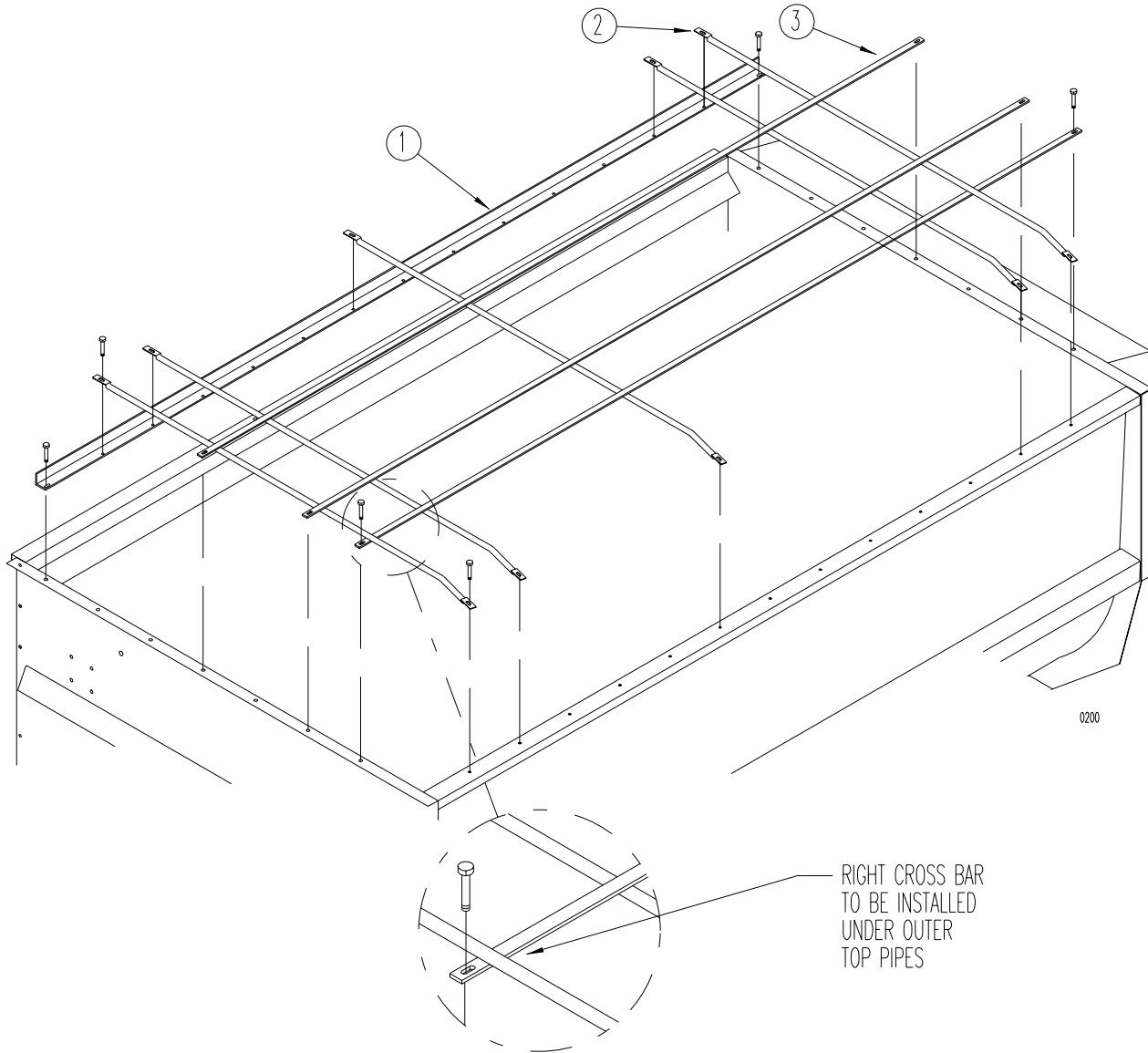


Reel and Auger Parts - 3130 Only

REF	PART NO	QTY	DESCRIPTION
1	102-535	1	Rear Panel (upper); Mtg Hrd: 5/16" x 1" B, Fw, Fln (21 ea) 1/2" x 1 1/4" B, Ln, Fw (2 ea)
2	171-919	2	Drain Plug; 1 1/4" PVC
3	102-534	1	Reel Weldment
4	102-247	1	Front Plug Assembly, 3 1/2"
5	102-251	1	Rear Plug Assembly, 2"
6	171-920	8	Spring; Reel Cross Pipe Compression, 16" LG x 2 3/8" OD
7	102-538	2	Reel Cross Pipe; Mtg Hrd: 3/8" x 5" Bolt, Lw, Nut
8	102-253	2	Cross Tube Wiper Assembly; Mtg Hrd: 3/8" x 5" Bolt, Lw, Nut
9	135-698	8	Retaining Sleeve
10	135-677	2	Plastic Wiper Blade; Long; Mtg Hrd: 1/4" x 7/8" Bolt, (171-083 Fw), Lw, Nut
11	135-675	4	Plastic Wiper Blade; Short; Mtg Hrd: 1/4" x 7/8" Bolt, (171-083 Fw), Lw, Nut
12	102-260	1	Bearing Assembly, 2"; Mtg Hrd: 5/8" x 1 1/4" Bolt, Lw, Nut
13	135-701	1	Plastic Sleeve
14	171-048	A/R	Washer, Special; 2"ID x 3"OD x .081" Thick (4 max)
15	171-049	A/R	Washer, Special; 2"ID x 3"OD x .127" Thick (4 max)
16	170-142	1	Snap Ring; 2", External
17	170-057	2	Bearing; 1 1/2", Mtg Hrd: 1/2" x 1 1/2" Bolt, LW & Nut (4 ea)
18	102-532	1	Upper Auger Assembly
19	102-530	1	Front Plug Assembly, 2 1/2" Splined
20	102-537	1	Rear Plug Assembly, 1 1/2"
21	135-555	8	Flighting Brace, 3/8" x 1 1/2" x 5 1/2"
22	136-819	2	Flighting, RH; 14"P x 18"OD x 5 9/16ID x 3/8 THK x 65 1/2" LG
23	136-820	1	Flighting, LH; 14"P x 18"OD x 5 9/16ID x 1/4 THK x 7" LG
24	174-558	30	Knife, Sickle Section (Qty May Vary) Mtg Hrd: 5/16" x 3/4" Bolt, Lw & Nut (2 ea)
	174-558	30	Knife, Sickle Section (optional) Mtg Hrd: 5/16" x 3/4" Bolt, Lw & Nut (2 ea)
25	104-083	1	Lower Auger Assembly
26	102-531	1	Front Plug Assembly, 2 1/2" Splined
27	102-537	1	Rear Plug Assembly, 1 1/2"
28	142-185	1	Flighting, RH; 18"P x 18"OD x 5 9/16ID x 3/8 THK x 18" LG
29	134-547	4	Auger Gusset, 1/2" x 2" x 5 3/8"
30	142-184	7	Flighting, LH; 18"P x 18"OD x 5 9/16ID x 3/8 THK x 18" LG (6 1/4 pitches required)
31	136-817	2	Paddle
32	136-839	1	Spacer Tube; 3" x 1/4" x 1 11/16"
33	175-781	22	Lower Auger Knife; (Weld on)
34	174-064*	3	Scallop Knife, RH; (Used on Item 12) (Qty may vary)
	174-065*	19	Scallop Knife, LH; (Used on Item 11) (Qty may vary)
35	174-093*	44	Screw, socket head, 1/2" x 1 1/2"; Mtg Hrd: 1/2" lock jam nut (Qty may vary)

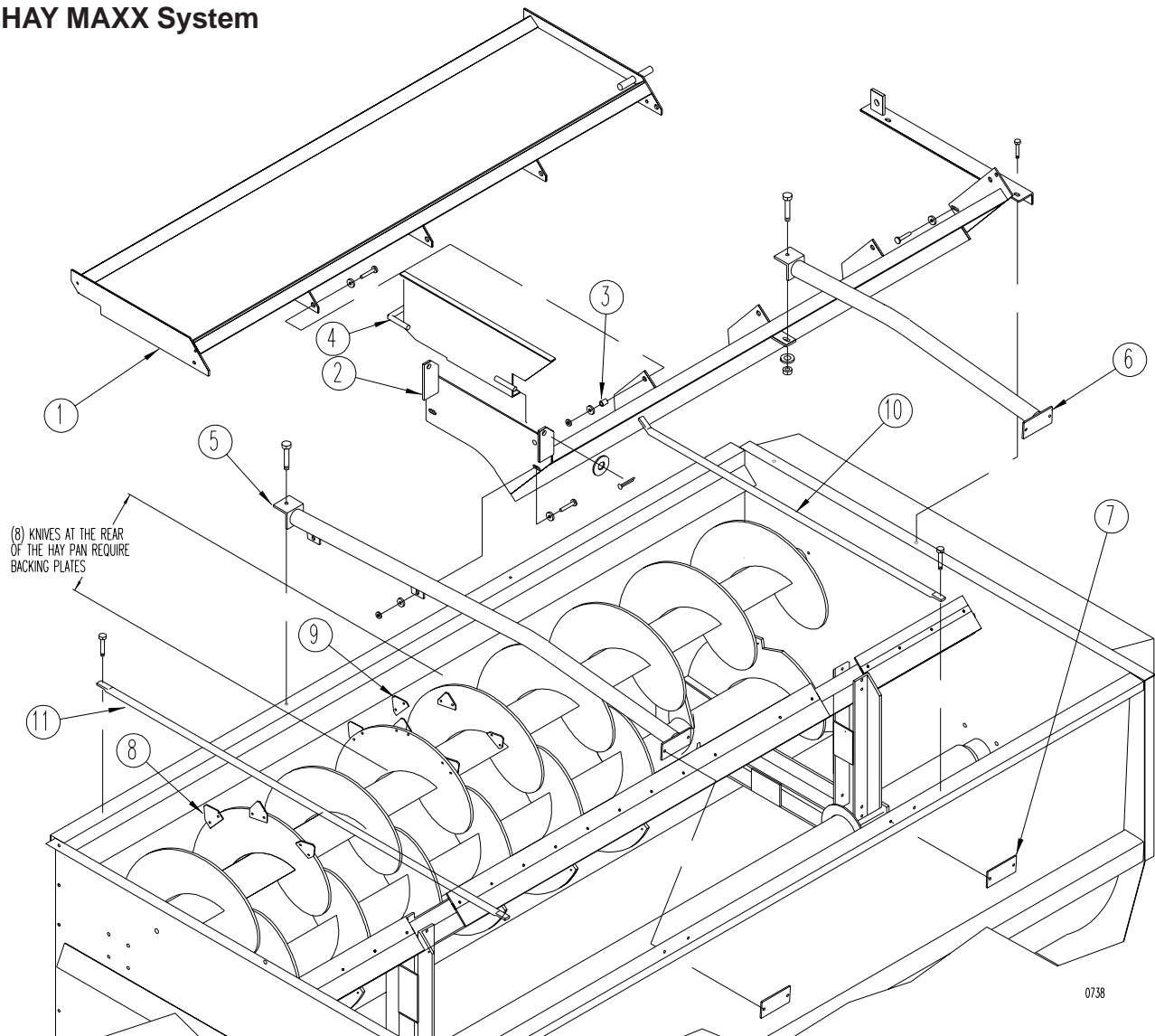
*Used with Roughage Maxx option only.

Top Guard Parts



REF	PART NO	QTY	DESCRIPTION
1	136-917	1	Mounting Angle, 3125 only 2" x 2" x 123 3/4"; Mtg Hrd: 5/16" x 1" B, Flt (2 ea)
	136-918	1	Mounting Angle, 3130 only 2" x 2" x 147 3/4"; Mtg Hrd: 5/16" x 1" B, Flt (2 ea)
2	134-951	11	Top Pipe, 3125 only 83" Lg; Mtg Hrd: 5/16" x 1" B, Flt (2 ea)
	134-951	13	Top Pipe, 3130 only 83" Lg; Mtg Hrd: 5/16" x 1" B, Flt (2 ea)
3	134-777	6	Cross Bar, 3125 only 123 3/4" Lg; Mtg Hrd: 5/16" x 1" B, Flt (2 ea)
	134-778	6	Cross Bar, 3130 only 147 3/4" Lg; Mtg Hrd: 5/16" x 1" B, Flt (2 ea)

HAY MAXX System



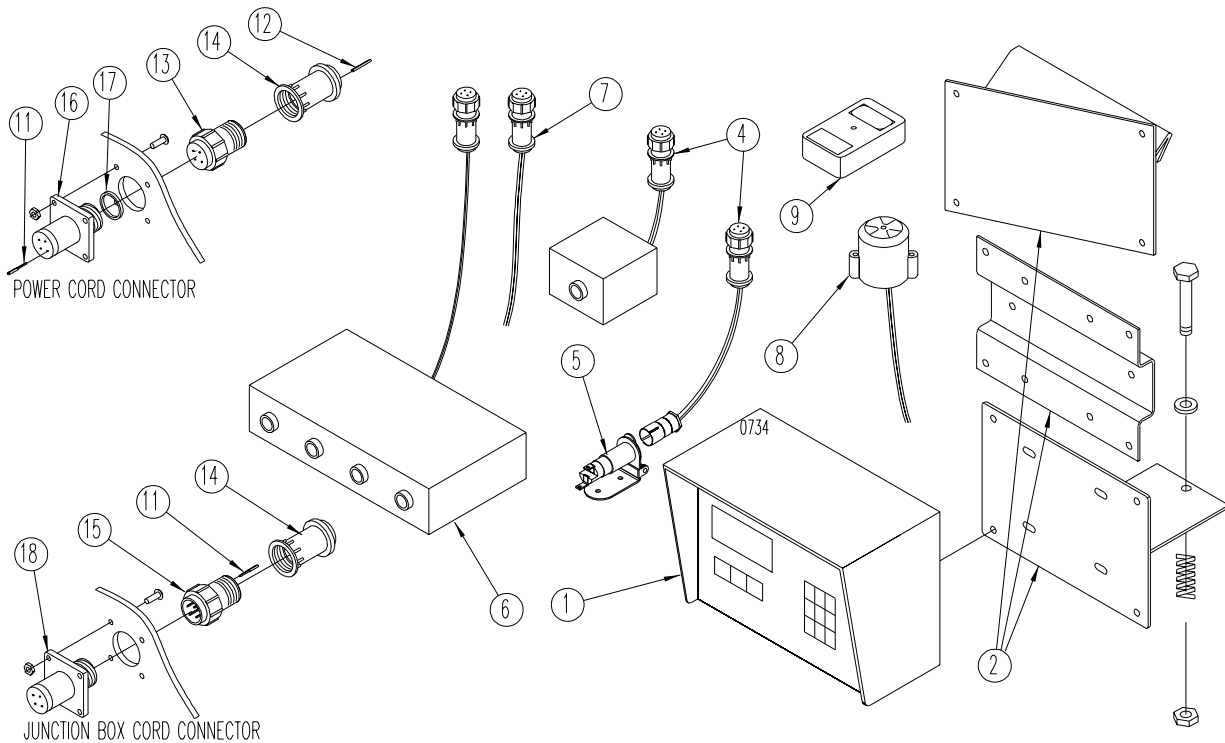
REF	PART NO	QTY	DESCRIPTION
1	102-553	1	Upper HAY MAXX Attachment; Mtg Hrd: 1/2" x 1 1/2" B, LN (5ea.), FW (8ea.)
2	102-552	1	Lower HAY MAXX Attachment; Mtg Hrd: 1/2" x 1 1/4" Bolt,FW, LN (3 ea.) 1/2" x 1 1/2" Bolt, LN (2 ea.), FW, (4 ea.)
3	134-771	5	Pivot Bushing
4	102-554	1	Haypan Backstop; Mtg Hrd: 3/4" FW, 3/16" x 2" Cotter Pin
5	102-555	1	Bucket Guard; Mtg Hrd: 1/2" x 1 1/2" B, FW, LN (1ea.)
6	102-556	1	Bucket Guard; Mtg Hrd: 1/2" x 1 1/2" B, FW, LN (1ea.)
7	134-012	2	Bucket Guard Mount; Mtg Hrd: 3/8" x 1 1/4" B, LW, Nut (2ea.)
8	174-558	50 ^A	Auger Knife (3125) (Quantity listed is total for HAY MAXX option) Mtg Hrd: (Knife only) 5/16" x 3/4" Bolt, LW & Nut (2 ea.) Mtg Hrd: (Knife with back plate)5/16" x 1" Bolt, LW & Nut (2 ea. Knife)
		60 ^A	Auger Knife (3130) (Quantity listed is total for HAY MAXX option) Mtg Hrd: (Knife only) 5/16" x 3/4" Bolt, LW & Nut (2 ea.) Mtg Hrd: (Knife with back plate)5/16" x 1" Bolt, LW & Nut (2 ea. Knife)
9	136-921	8	Backing Plate
10	141-533	6	Top Guard Pipe, 55-1/2"
11	141-534	1	Top Guard Pipe, 85-1/2"

A: Auger knife Quantities listed are the total number of knives needed for the HAY MAXX option. Knife quantity includes standard factory installed knives on upper auger. Only order quantity needed to total the amount of knives listed above for a field installation.

Kuhn Knight, Inc.

1501 West 7th Ave., Brodhead, WI 53520
701 Cherry Ave., Greeley, CO 80632

Scale Parts



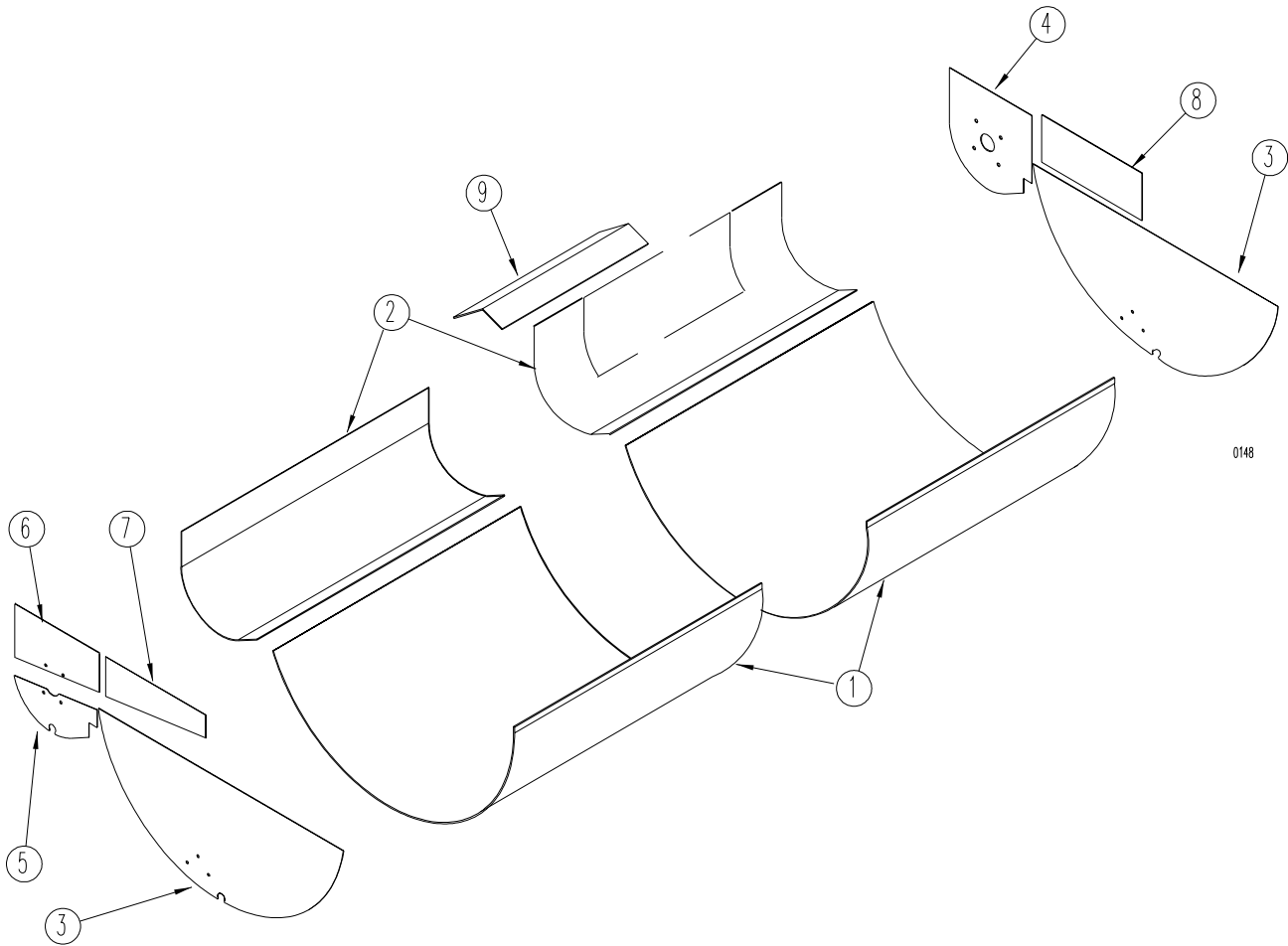
REF	PART NO	QTY	DESCRIPTION
1	172-128	1	Digi-Star Model EZ-2000 Basic Indicator, 1" high display
	172-800	1	Digi-Star Model EZ-2000V Indicator, 1.7" high display
	172-130	1	Digi-Star Model EZ-3200 Indicator, 1" high display
	174-501	1	Digi-Star Model EZ-3200 Indicator (serial port), 1" high display
	175-209	1	Digi-Star Model EZ-3200 Indicator (with rev counter and serial port), 1" high display
	172-500	1	Digi-Star Model EZ-3200V Indicator, 1.7" high display
	174-502	1	Digi-Star Model EZ-3200V Indicator (with serial port), 1.7" high display
	175-210	1	Digi-Star Model EZ-3200V Indicator (with rev counter and serial port), 1.7"high display
	175-211	1	Digi-Star Model EZ-3500 Indicator (with rev counter and serial port), 1" high display
	175-212	1	Digi-Star Model EZ-3500V Indicator (with rev counter and serial port), 1.7" high display
	172-803	1	Digi-Star RD 2000 Remote, 1" high display w/ 25' Cord
	172-801	1	Digi-Star RD 2000V Remote, 1.7" high display w/ 25'Cord
	172-804	1	Digi-Star RD 2000 T/R Remote, 1" high display w/ Transmitter & 25' Cord
	172-802	1	Digi-Star RD 2000V T/R Remote, 1.7" high display w/ Transmitter & 25' Cord
			Mtg Hrd for Digi-Star indicators: 1/4" x 3/4" Bolt, Flat washer, Lock washer & N (2 ea)
	173-225	1	Weigh-Tronix Model 615 Basic Indicator, 1" high display
	173-226	1	Weigh-Tronix Model 615XL Basic Indicator, 2" high display
	173-227	1	Weigh-Tronix Model 715 Indicator, 1" high display
	174-503	1	Weigh-Tronix Model 715 Indicator (serial port), 1" high display
	175-574	1	Weigh-Tronix Model 1040 Indicator, 1.1 high display (serial and remote ports)
	175-575	1	Weigh-Tronix Model 1040 Indicator, 2" high display(speed sensor & dual serial ports)
	175-576	1	Weigh-Tronix Model 1040 Indicator, (serial & remote ports) 2" high display
	175-577	1	Weigh-Tronix Model 1040 Indicator (speed sensor & dual serial ports), 1.1 high display
	175-045	1	Weigh-Tronix Model 2015 Indicator (with serial port), 1" high display
	174-505	1	Weigh-Tronix 712 Remote, 1" high display w/ 30' Cord
	174-506	1	Weigh-Tronix 712XL Remote, 2" high display w/ 30' Cord
	174-507	1	Weigh-Tronix 1012 Remote, 1" high display w/ 30' Cord
	175-074	1	Weigh-Tronix 1012XL Remote, 2" high display w/ 30' Cord
	175-578	1	Weigh-Tronix RD64 Remote, 1.1" high display w/ 30' Cord
	175-579	1	Weigh-Tronix RD64XL Remote, 2" high display w/ 30' Cord
	175-595	1	Weigh-Tronix RD125RF Wireless Remote, 1" high display w/ power cord

Scale Parts

REF	PART NO	QTY	DESCRIPTION
2	101-835	1	Indicator Mount Mtg Hrd: Spring (170-238) 3/8" x 2" Bolt, Flat washer & Lock nut
	134-409	1	Remote indicator mount, Mtg Hrd: 5/16" x 3/4" Bolt, Lock washer, Nut (2 ea)
	102-772	1	Angled remote indicator mount, Mtg Hrd: 5/16" x 3/4" Bolt, Lock washer, Nut (2 ea)
3	175-051	1	Digi-Star RD1000 remote mirror mount (not shown)
	175-052	1	Mirror mount for Digi-Star above (not shown)
	175-046	1	Weigh-Tronix 1012M remote mirror mount (not shown)
	175-582	1	Weigh-Tronix RD64M remote mirror mount (not shown)
	175-583	1	Mirror mount for Weigh-Tronix above (not shown)
	175-569	1	Digi-Star RD1000 Wireless remote, 1" high display w/ power cord (not shown)
	175-048	1	Digi-Star RF900 tranceiver for above
	175-049	1	Replacement cable for RF900 tranceiver (not shown)
	175-050	2	Magnet mount for above tranceiver (not shown)
4	172-183	1	Power cord assy, stationary application or unit with revolution counter
	172-354	1	Power cord assy, trailer and truck application with out rev counter
	172-136	1	Power supply 120 VAC input, 4-6 AMP 13.8 VDC
5	170-415	1	Plug, tractor mount
6	103-052	1	Junction Box W/15' cable; #10 x 1" Sheet metal screw (2 ea)
	173-156	1	15' Replacement junction box cable
	172-166	1	10' Junction box extension cable (not shown)
	172-165	1	30' Junction box extension cable (not shown)
7	174-719	1	Digi-Star Remote indicator cord (not shown)
	174-003	1	Digi-Star dual remote cable (not shown)
8	101-917	1	Digi-Star Alarm horn assembly Mtg Hrd: #6 x 3/4" Bolt, Lock washer, Nut (2 ea)
	101-918	1	Weigh-Tronix Alarm horn assembly Mtg Hrd: #6 x 3/4" Bolt, Lock washer, Nut (2 ea)
9	172-143	1	Digi-Star D-22A hand held transmitter (Installed Receiver is Required)
	174-926	1	Digi-Star DXT-21 hand held transmitter (Installed Receiver is Required)
	172-350	1	Weigh-tronix hand held transmitter (Installed Receiver is Required)
10	175-626	1	Weigh-Tronix printer (not shown)
	175-627	1	Weigh-Tronix printer data cord (not shown)
	175-628	1	Weigh-Tronix printer paper 1 roll (not shown)
	174-000	1	Digi-Star printer (not shown)
	174-002	1	Digi-Star printer power cord (not shown)
	174-001	1	Digi-Star printer data cord (not shown)
	174-004	1	Digi-Star printer paper 1 roll (not shown)
11	173-211	4	Contact pin
12	173-212	4	Contact socket
	173-216	1	Pin extraction tool (not shown)
13	173-213	1	Power cord connector
	174-923	1	Nut, connector
14	173-214	1	Strain relief
15	173-215	1	Junction box cord connector
	174-923	1	Nut, connector
16	173-217	1	Power connector chassis
17	173-218	1	Seal for power connector chassis
18	173-219	1	Load cell connector chassis
19	171-158	1	Battery box (not shown)
20	171-380	2	Battery terminals (not shown)
21	171-936	1	Battery hold-down strap (not shown)
22	132-988	1	16 Ga. Ground (not shown)
23	172-386	1	Precision calibrator for scale indicators (not shown)
24	171-960	1	Cord splice kit (not shown)

Refer to subframe or undercarriage mounting section for weigh bars or load cells for your specific application.

Repair Liner Parts



REF	PART NO	QTY	DESCRIPTION
	Hot Roll Steel		
	Stainless Steel		
1	136-889	2	Reel Liner (3125 only)
	136-873	2	Reel Liner (3130 only)
2	136-887	2	Auger Liner (3125 only)
	136-881	2	Auger Liner (3130 only)
3	136-883	2	Reel End Liner
4	136-875	1	Auger End Liner (Front)
5	136-877	1	Auger End Liner (Lower Rear)
6	136-879	1	Auger End Liner (Upper Rear)
7	136-885	1	Rear Upper Liner
8	134-705	1	Front Upper Liner
9	134-716	1	Door Opening Liner

Decals

The following decals are listed below for your convenience.
Use the operator's manual for decal location, part number and ordering.

Unit Decals:

PART NO	QTY	DESCRIPTION
175-439	1	Complete Set Of Decals For 3125
175-442	1	Complete Set Of Decals For 3130
170-849	2	WARNING - Stay Clear Of . . .
171-712	1	NOTICE - Retighten Set Screws . . .
171-748	1	Door Gauge
171-820	4	DANGER - Rotating Auger Inside . . .
171-911	1	NOTICE - Operating Precautions
171-913	1	WARNING - Do Not Operate . . .
171-915	2	DANGER - Shield Missing . . .
171-947	4	DANGER - Do Not Hand Load . . .
171-948	1	BEWARE - If Mixer . . .
171-949	1	"U.S. Patent No. . . ."
172-292	1	Mixer Full Line
172-786	1	DANGER - Rotating Parts . . .
172-820	1	WARNING - Lifting Instructions . . .
172-883	1	Oil Level Plug
173-040	1	CAUTION PTO Operation . . .
173-044	1	Made in Wisconsin. . .
173-078	1	DANGER Shield Missing. . .
175-414	2	"3125"
175-415	2	"3130"
173-447	2	"REEL AUGGIE"
173-448	9ft	Stripe For 3125 Only
	13ft	Stripe For 3130 Only
174-514	3	"KUHNNIGHT"
175-519	1	WARNING, Rotating Driveline
175-782	2	Roughage Maxx (Optional)
174-556	1	HAY MAXX System (Optional)

Paint

170-366	Kuhn Knight Yellow Aerosol Can
170-812	Kuhn Knight Yellow Quart Can
170-813	Kuhn Knight Yellow Gallon Can

Hardware Part Number Listing

All fasteners are NC thread, Grade 5 unless otherwise specified.

HEX HEAD BOLTS

Size	Part No		
1/4 x 1/2	173-279	1/2 x 1-1/2	170-002
1/4 x 3/4	170-803	1/2 x 1-1/2 (Grade 8)	172-951
1/4 x 7/8	171-094	1/2 x 1 3/4	171-774
1/4 x 1	170-310	1/2 x 2	171-802
1/4 x 1-1/2	170-068	1/2 x 2-1/4	172-387
1/4 x 2	172-986	1/2 x 2-1/2	170-885
1/4 x 2 (Grade 8)	175-073	1/2 x 2-1/2 (Full thread)	171-099
1/4 x 2-3/4	171-203	1/2 x 2-3/4	172-007
1/4 x 3	171-403	1/2 x 3	170-168
1/4 x 3 1/2	173-640	1/2 x 3 1/2	170-167
1/4 x 4	173-505	1/2 x 3-1/2 (Grade 8)	172-950
5/16 x 5/8	170-532	1/2 x 4	173-111
5/16 x 3/4	170-262	1/2 x 4 (Full thread)	171-509
5/16 x 3/4 (Stainless steel)	174-787	1/2 x 5	171-412
5/16 x 7/8	170-256	1/2 x 6	173-506
5/16 x 1	170-027	1/2 x 6 (Grade 8)	174-944
5/16 x 1-1/4 (Full thread)	170-188	1/2 x 6-1/2	173-711
5/16 x 1-1/2	170-372	1/2 x 7	174-328
5/16 x 1-3/4	170-263	1/2 x 7-1/2	175-107
5/16 x 2	172-987	1/2 x 8-1/2	170-504
5/16 x 2-1/2	170-369	1/2 x 11	170-506
5/16 x 3	170-295	9/16 x 1	173-699
5/16 x 3-1/4	171-639	9/16 x 1-1/4	173-700
5/16 x 3-1/2	173-748	9/16 x 1-1/2	173-701
5/16 x 4	170-293	9/16 x 2	172-219
5/16 x 4-1/2	170-294	5/8 x 1	171-087
5/16 x 5 (Grade 8)	172-983	5/8 x 1-1/4	171-366
5/16 x 5-1/2 (Grade 8)	172-952	5/8 x 1-1/2	170-153
3/8 x 3/4	170-439	5/8 x 1-3/4 (Full thread)	170-030
3/8 x 3/4 (Stainless steel)	174-788	5/8 x 2	170-009
3/8 x 7/8	170-268	5/8 x 2 (Full thread)	171-772
3/8 x 7/8 (soc. hd.capscrew)	172-044	5/8 x 2-1/4	173-009
3/8 x 1	170-054	5/8 x 2-1/2	172-381
3/8 x 1-1/4	170-005	5/8 x 2-1/2 (Full thread)	170-129
3/8 x 1-1/4 (Stainless steel)	174-917	5/8 x 2-3/4	172-356
3/8 x 1-1/2	170-368	5/8 x 3	170-258
3/8 x 1-3/4	172-383	5/8 x 3-1/2	170-038
3/8 x 2	170-245	5/8 x 4	170-371
3/8 x 2-1/4	170-320	5/8 x 4-1/2	170-067
3/8 x 2-1/2	170-257	5/8 x 5	170-065
3/8 x 2-1/2 (Full thread)	170-128	5/8 x 5-1/2	172-421
3/8 x 2-1/2 (Lag)	171-775	5/8 x 6	170-381
3/8 x 3	170-380	5/8 x 6-1/2	173-777
3/8 x 3-1/2	170-292	5/8 x 7-1/2	173-019
3/8 x 4	170-877	5/8 x 9-1/2	171-039
3/8 x 4-1/4 (Black oxide)	171-813	3/4 x 1-1/2	173-507
3/8 x 4-1/2	170-519	3/4 x 2	171-768
3/8 x 5	170-493	3/4 x 2 (Full thread)	170-058
3/8 x 5-1/2	174-196	3/4 x 2 (Grade 8)	171-877
3/8 x 5-1/2 (Full thread)	170-593	3/4 x 2-1/4	171-275
3/8 x 6	174-304	3/4 x 2-1/2	170-374
3/8 x 6-1/2	171-291	3/4 x 2-1/2 (Grade 8)	175-055
3/8 x 7	172-587	3/4 x 3	170-014
7/16 x 3/4	170-265	3/4 x 3 UNF	173-776
7/16 x 1	170-032	3/4 x 3-1/2	170-195
7/16 x 1-1/4	170-354	3/4 x 3-1/2 (Grade 8)	171-899
7/16 x 1-1/4 (Grade 8)	174-216	3/4 x 4	170-419
7/16 x 1-1/2	170-059	3/4 x 4 (Grade 8) UNF	173-579
7/16 x 2	170-356	3/4 x 4-1/2	170-846
7/16 x 2-1/2	170-379	3/4 x 4-1/2 (Grade 8)	173-039
7/16 x 3	170-270	3/4 x 4-1/2 (Grade 8) UNF	173-588
7/16 x 5-1/2	170-377	3/4 x 5	173-508
7/16 x 6	170-378	3/4 x 5 UNF	173-510
1/2 x 3/4	171-252	3/4 x 5-1/2 (Grade 8) UNF	173-514
1/2 x 1	170-149	3/4 x 6	171-116
1/2 x 1-1/4	170-373	3/4 x 6 UNF	173-511
		3/4 x 6 (Grade 8)	173-231
		3/4 x 7	173-745
		3/4 x 7 UNF	173-747
		3/4 x 7-1/2	175-004
		3/4 x 8	173-509
		7/8 x 2-1/4	172-892
		7/8 x 3	172-002
		7/8 x 3-1/2	173-020
		7/8 x 4	173-299
		7/8 x 4 UNF	171-092
		7/8 x 6-1/2	173-774
		7/8 x 7	173-749
		7/8 x 7 UNF	174-097
		7/8 x 8	173-750
		7/8 x 8 UNF	173-515
		1 x 3-1/2	173-021
		1 x 4	175-119
		1 x 4 (Grade 8)	175-248
		1 x 7 UNF	173-516
		1 x 8	174-723
		1 x 8 (grade 8) UNF	173-713
		1-1/4 x 4-1/2 (grade 8)	175-003
		M8 x 16MM (Grade 8.8)	174-610
		M8 x 20MM (Grade 8.8)	175-193
		M8 x 25MM (Grade 8.8)	174-900
		M10 x 22MM (Grade 8.8)	175-016
		M10 x 25MM (Grade 8.8)	173-344
		M12 x 25MM (Grade 8.8)	171-566
		M12 x 35MM (Grade 8.8)	175-020
		M12 x 40MM (Grade 12.9)	175-190
		M12 x 45MM (Grade 10.9)	174-911
		M14 x 30MM (Grade 8.8)	173-518
		SELF TAPPING SCREW	
		1/4 x 3/4	174-874
		CARRIAGE BOLTS	
		1/4 x 1-1/4 (Grade 2)	170-311
		1/4 x 1-1/2 (Grade 2)	170-355
		1/4 x 2 (Grade 2)	170-299
		1/4 x 2-1/2 (Grade 2)	171-394
		1/4 x 2-3/4 (Grade 2)	170-508
		1/4 x 3	170-509
		5/16 x 1 (Grade 2)	170-370
		5/16 x 1-1/2 (Grade 2)	170-296
		5/16 x 2-1/2 (Grade 2)	171-395
		5/16 x 5-1/2 (Grade 2)	170-494
		3/8 x 3-1/2 (Grade 2)	171-283
		3/8 x 4-1/2 (Grade 2)	170-191
		3/8 x 5 (Grade 2)	170-495
		3/8 x 6-1/2 (Grade 2)	171-174
		3/8 x 8 (Grade 2)	170-297
		3/8 x 13 (Grade 2)	170-298
		3/8 x 13-1/2 (Grade 2)	170-300
		1/2 x 1-1/2 (Grade 5)	174-918
		1/2 x 6-1/2 (Grade 2)	171-098
		1/2 x 9 (Grade 2)	171-255
		5/8 x 2	175-110
		5/8 x 2-1/2 (Grade 5)	174-790
		PLOW BOLTS	
		5/8 x 2	174-767
		3/4 x 2-1/2	174-948
		TRUSS HEAD BOLTS	
		#6-32 x 3/4	172-416
		#6-32 x 1	173-079
		#8-32 x 1-1/2	171-210
		#10-32 x 3/4	171-604
		#10-32 x 1	172-882
		1/4 x 3/4	170-193
		1/4 x 1	170-194
		5/16 x 1	170-117

Hardware Part Number Listing

SET SCREWS (Socket Head)(Cup Point)

1/4 x 1/4	170-247
1/4 x 5/8	172-985
5/16 x 1/4	170-993
5/16 x 5/16	170-248
5/16 x 5/16 UNF	170-825
5/16 x 3/8 UNF	173-367
5/16 x 1/2	170-254
5/16 x 5/8 UNF	170-456
5/16 x 1 (Sq hd)	173-610
5/16 x 1-1/2	172-917
3/8 x 1/4	170-856
3/8 x 3/8	170-151
3/8 x 1/2	170-857
3/8 x 1/2 UNF	171-469
3/8 x 3/4	174-190
3/8 x 3/4 (Sq hd)	170-290
3/8 x 1	170-021
3/8 x 1 (Sq hd)	173-609
3/8 x 1 (Sq hd) (Dog pt)	171-551
7/16 x 7/16	170-288
7/16 x 1 (Sq hd)	170-147
1/2 x 5/8	170-249
1/2 x 1	170-438
1/2 x 1-1/4 (half dog point)	171-085
5/8 x 5/8	170-250
3/4 x 3/4 (Sq hd) (Dog pt)	170-251
HEX NUTS	
#6-32	172-418
#10-32	171-606
1/4	170-125
5/16	170-119
3/8	170-007
7/16	170-062
7/16 (Grade 8) UNF	174-217
1/2	170-004
9/16	173-702
5/8	170-011
3/4	170-017
3/4 UNF	170-159
3/4 (Grade 8) UNF	173-520
7/8	171-776
1	173-022
1 UNF	173-714
1 (Grade 8)	175-247
1 (Grade 8) UNF	173-519
1-1/8 UNF	174-095
1-1/4 UNF	170-130
1-1/4 (Grade 8)	175-006
M8 x 1.25MM	172-949
M30 x 1.5MM	174-902
M50 x 1.5MM	175-200
LOCK NUTS	
#6-32	174-188
#10-32	174-073
1/4	170-069
5/16	170-137
3/8	170-047
7/16	170-239
1/2	170-042
1/2 UNF	170-566
1/2 (Grade 8)	171-671
9/16	172-220
5/8	170-031
3/4	170-185
3/4 (Grade 8)	171-900

3/4 (Grade 8) UNF	173-578
7/8	173-069
7/8 UNF	171-093
1	174-928
1 UNF	170-527
M45 x 1.5MM	175-199
M50 x 1.5MM	175-197
JAM NUTS	
1/4UNF	171-386
5/16	173-521
3/8	170-022
7/16	170-046
1/2	170-036
5/8	170-037
3/4	170-035
1	174-927
FLAT WASHERS	
#10	171-525
1/4	170-301
1/4 Heavy	171-083
1/4 Fender	173-672
5/16	170-127
5/16 Fender	173-811
3/8	170-244
3/8 Heavy	170-302
3/8 Aluminum	173-900
7/16	170-138
1/2	170-040
1/2 (Grade 8)	172-984
9/16	173-693
5/8	170-066
5/8 (Grade 8)	173-581
3/4	170-015
7/8	173-298
7/8 Heavy	170-131
1	170-122
1-1/4	170-928
LOCK WASHERS	
#6	172-417
#10	171-605
1/4	170-124
5/16	170-118
3/8	170-006
7/16	170-061
1/2	170-003
9/16	173-692
5/8	170-010
3/4	170-016
3/4 External Tooth	174-793
7/8	172-003
1	171-021
1-1/4	175-005
ZERKS	
1/8 NPT	170-865
1/8 NPT-45 Deg	170-864
1/8 NPT-65 Deg	170-215
1/8 NPT-90 Deg	170-866
3/16 drive in	174-124
1/4-28	170-023
1/4-28 - 45 Deg	170-148
1/4-28 - 90 Deg	170-049
1/4 NPT	170-277
1/4 NPT - 45 Deg	174-130
COTTER PINS	
1/16 x 1/2	170-992
3/32 x 3/4	170-364
1/8 x 1	170-045
1/8 x 1-1/4	170-033

1/8 x 1-1/2	170-382
5/32 x 1	170-421
5/32 x 1-1/2	170-236
5/32 x 3	170-135
3/16 x 1-1/4	170-991
3/16 x 2	170-115
1/4 x 1-1/2	170-521
1/4 x 2	170-056
1/4 x 2-1/2	173-961

ROLLER CHAIN CONNECTOR LINKS

#50	170-088
#50-2R	170-094
#60	170-089
#60-2R	170-095
#60H	171-102
#80	170-090
#80H	170-821
#100	170-091
#100H	171-969
#120	170-092
#140	170-093
#140H	173-552
#160	170-888

OFFSET LINKS

#50	170-096
#50-2R	170-102
#60	170-097
#60-2R	170-103
#60H	171-103
#80	170-098
#80H	170-820
#100	170-099
#100H	172-145
#120	170-100
#140	170-101
#140H	173-553
#160	170-887

ROLLER LINKS

#50	171-415
#60	171-416
#80	171-417
#80H	170-795
#100	171-418
#100H	172-146
#120	171-419
#140	171-420
#160	171-421

Part Number Listing

101-742 ...5	135-826 ...9	171-012 ...9	173-215 ...17
101-761 ...8	136-260 ...7	171-048 ...11, 13	173-216 ...17
101-771 ...5	136-326 ...9	171-049 ...11, 13	173-217 ...17
101-788 ...5	136-810 ...7	171-144 ...5	173-218 ...17
101-818 ...8	136-817 ...11, 13	171-158 ...17	173-219 ...17
101-835 ...17	136-819 ...13	171-178 ...9	173-225 ...16
101-880 ...5	136-820 ...11, 13	171-380 ...17	173-226 ...16
101-909 ...5	136-835 ...5	171-409 ...7	173-227 ...16
101-917 ...17	136-836 ...7	171-585 ...7	173-442 ...8
101-918 ...17	136-837 ...5	171-607 ...7	173-443 ...8
102-086 ...9	136-839 ...11, 13	171-712 ...19	173-444 ...8
102-095 ...9	136-844 ...7	171-748 ...19	173-445 ...19
102-246 ...11	136-847 ...7	171-819 ...5	173-446 ...19
102-247 ...11, 13	136-849 ...7	171-820 ...19	173-447 ...19
102-249 ...7	136-850 ...7	171-911 ...19	173-448 ...19
102-251 ...11, 13	136-855 ...11	171-913 ...19	174-000 ...17
102-253 ...13	136-858 ...7	171-915 ...19	174-001 ...17
102-260 ...11, 13	136-864 ...9	171-919 ...7, 11, 13	174-002 ...17
102-436 ...9	136-867 ...5	171-920 ...11, 13	174-003 ...17
102-530 ...11, 13	136-873 ...18	171-935 ...5	174-004 ...17
102-531 ...11, 13	136-874 ...18	171-936 ...17	174-064 ...11, 13
102-532 ...13	136-875 ...18	171-937 ...9	174-065 ...11, 13
102-534 ...13	136-876 ...18	171-947 ...19	174-093 ...11, 13
102-535 ...11, 13	136-877 ...18	171-948 ...19	174-501 ...16
102-537 ...11, 13	136-878 ...18	171-949 ...19	174-502 ...16
102-538 ...13	136-879 ...18	171-954 ...5	174-503 ...16
102-541 ...11	136-880 ...18	171-960 ...17	174-505 ...16
102-543 ...11	136-881 ...18	172-005 ...8	174-506 ...16
102-544 ...11	136-882 ...18	172-024 ...5	174-507 ...16
102-550 ...5	136-883 ...18	172-128 ...16	174-514 ...19
102-552 ...15	136-884 ...18	172-130 ...16	174-558 ...11, 13, 15
102-553 ...15	136-885 ...18	172-136 ...17	174-647 ...19
102-554 ...15	136-886 ...18	172-138 ...5	174-719 ...17
102-555 ...15	136-887 ...18	172-143 ...17	174-923 ...17
102-556 ...15	136-888 ...18	172-161 ...5	174-926 ...17
102-772 ...17	136-889 ...18	172-165 ...17	175-045 ...16
103-052 ...17	136-890 ...18	172-166 ...17	175-046 ...17
104-082 ...11	136-891 ...18	172-178 ...5	175-048 ...17
104-083 ...13	136-917 ...14	172-179 ...5	175-049 ...17
130-785 ...9	136-918 ...14	172-180 ...5	175-050 ...17
132-988 ...17	136-921 ...15	172-183 ...17	175-051 ...17
133-394 ...7	141-533 ...15	172-266 ...5	175-052 ...17
134-012 ...15	141-534 ...15	172-292 ...19	175-074 ...16
134-086 ...8	142-184 ...11, 13	172-350 ...17	175-209 ...16
134-155 ...8	142-185 ...11, 13	172-354 ...17	175-210 ...16
134-235 ...9	170-053 ...7	172-386 ...17	175-211 ...16
134-409 ...17	170-054 ...7	172-500 ...16	175-212 ...16
134-547 ...11, 13	170-057 ...11, 13	172-751 ...8	175-308 ...5
134-705 ...18	170-120 ...9	172-786 ...19	175-309 ...5
134-716 ...18	170-142 ...11, 13	172-800 ...16	175-317 ...7
134-771 ...15	170-149 ...7	172-801 ...16	175-318 ...7
134-777 ...14	170-152 ...7	172-802 ...16	175-569 ...17
134-778 ...14	170-192 ...9	172-803 ...16	175-574 ...16
134-890 ...5	170-238 ...17	172-804 ...16	175-575 ...16
134-900 ...5	170-243 ...9	172-820 ...19	175-576 ...16
134-951 ...14	170-244 ...5	172-822 ...5	175-577 ...16
134-954 ...7	170-366 ...19	172-823 ...5	175-578 ...16
134-980 ...18	170-373 ...7	172-883 ...19	175-579 ...16
135-555 ...11, 13	170-415 ...17	172-884 ...7	175-582 ...17
135-597 ...7	170-478 ...8	173-040 ...19	175-583 ...17
135-598 ...7	170-499 ...7	173-044 ...19	175-595 ...16
135-662 ...7	170-518 ...8	173-078 ...19	175-626 ...17
135-675 ...11, 13	170-627 ...5	173-156 ...17	175-627 ...17
135-676 ...11	170-800 ...8	173-164 ...7	175-628 ...17
135-677 ...13	170-812 ...19	173-211 ...17	175-781 ...11, 13
135-698 ...11, 13	170-813 ...19	173-212 ...17	180-630 ...5
135-701 ...11, 13	170-849 ...19	173-213 ...17	
135-824 ...9	170-865 ...5	173-214 ...17	