



**ATLONA**  
**USB TO HDMI CONVERTER**  
**AT-HDPIX**

**USER MANUAL**



## TABLE OF CONTENTS

1. Introduction	1
2. Features	1
3. PC Requirements	1
3.1 Mac Requirements	1
4. Installation	2
5.0 Updates	2
5.1 Screen Resolution	3
5.2 Color Quality	3
5.3 Screen Rotation	4
5.4 Extend To	4
5.5 Extend	5
5.6 Mirror	5
5.7 OFF	6
5.8 Advanced	6
6. Technical Specifications	7
7. HDPiX Troubleshooting guide	8
8. Safety Information	9
9. Warranty	10
10. Product registration	11

## INTRODUCTION

Atlona Technologies presents the all new USB to HDMI adaptor, the HDPiX. This new solution is designed to add a HDMI port to any computer (Mac or PC) and has limitless applications in both consumer and commercial environments. From digital signage to home theater, the all new HDPiX provides a simple solution for viewing content from a computer on any HDTV making it the perfect device for any consumer or commercial application. Set up is as simple as plug and play; convenient for any user, no matter the level of technical knowledge.

## FEATURES

- HD display up to UXGA 1600x1200 or 720p
- 32 bit True color depth of high quality images
- Standard and widescreen aspect ratios
- Compatible with all CRT and Flat Panel monitors
- Auto display ID using VESA compliant protocols
- Audio through 3.5mm stereo jack
- Quick and easy installation
- PC and Mac compatible
- Supports Windows 2000, XP and Vista
- USB Powered
- Includes software and USB cable

## PC REQUIREMENTS

- CD-ROM Drive
- Windows 2000 SP4
- Windows XP SP2
- Windows XP SP3
- Windows Vista SP1 (32-bit and 64-bit editions)
- One USB 2.0 port
- 30 megabytes (MB) of free disk space
- Computer screen for use with the HDPiX device

## MAC REQUIREMENTS

- CD-ROM Drive
- OS X 10.4.1 or higher
- One USB 2.0 port
- 17 megabytes (MB) of free disk space
- Computer screen for use with the HDPiX device

## INSTALLATION

Insert CD into CD-ROM drive Run the SETUP.EXE file and select language to install

Connections:

Options # 1 Extended Screen

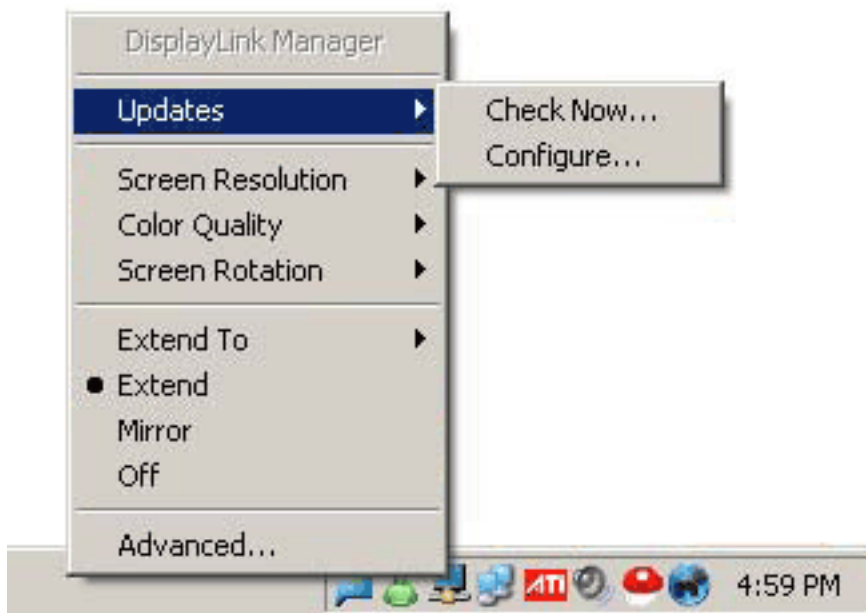


Options # 2 Mirror Screen



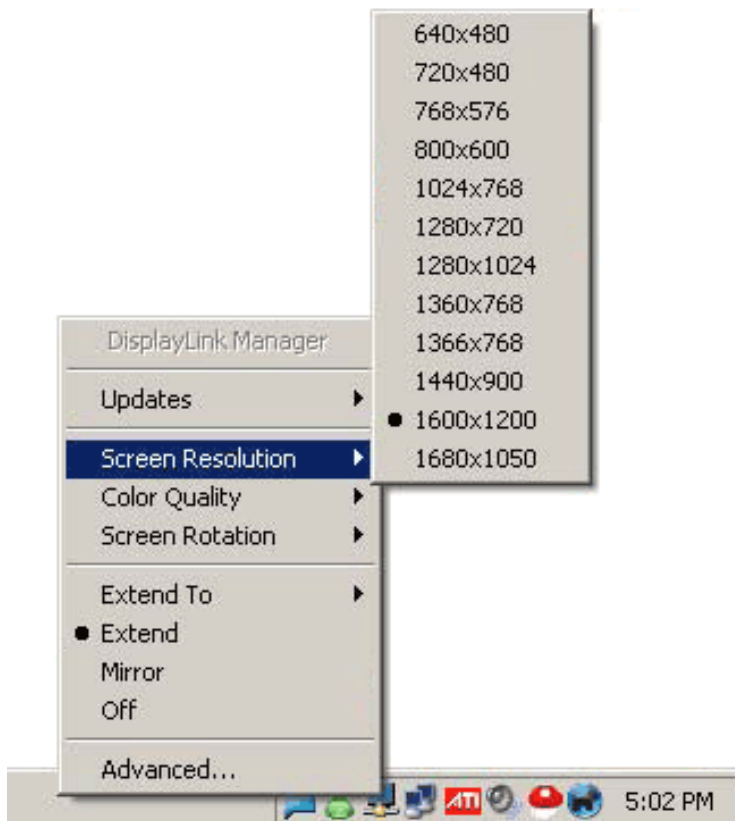
## UPDATES

From this menu the software can be updated online, or configured for automatic updates



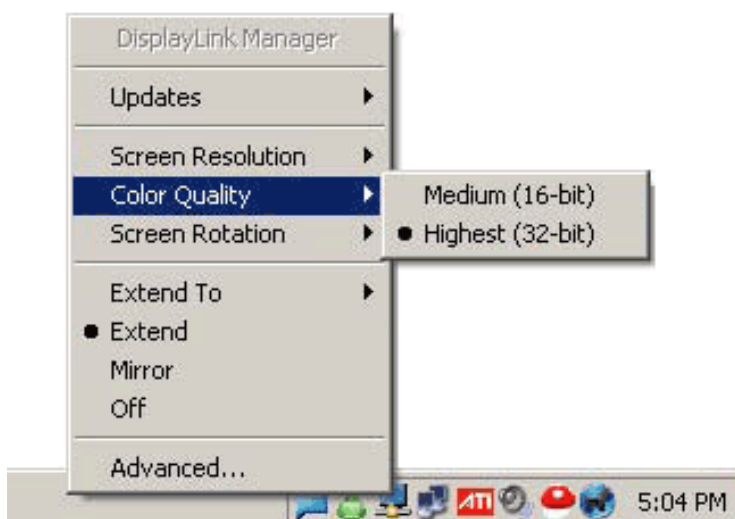
## SCREEN RESOLUTION

Screen Resolution for extended display or mirrored display. To change the resolution, you have to be in extended mode.



## COLOR QUALITY

Color Quality can be selected to 16 bit or 32 bit



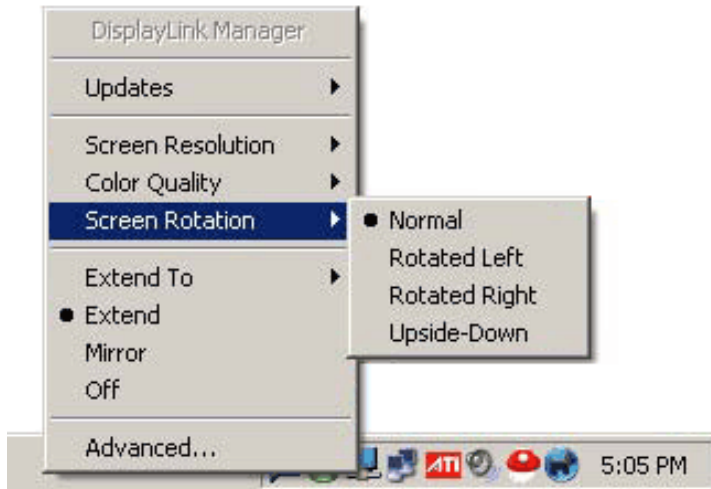
## SCREEN ROTATION

Normal - screen is in normal position

Rotated left - Rotates screen to the left

Rotated right - Rotates screen to the right

Upside-Down - Rotates screen upside down



## EXTEND TO

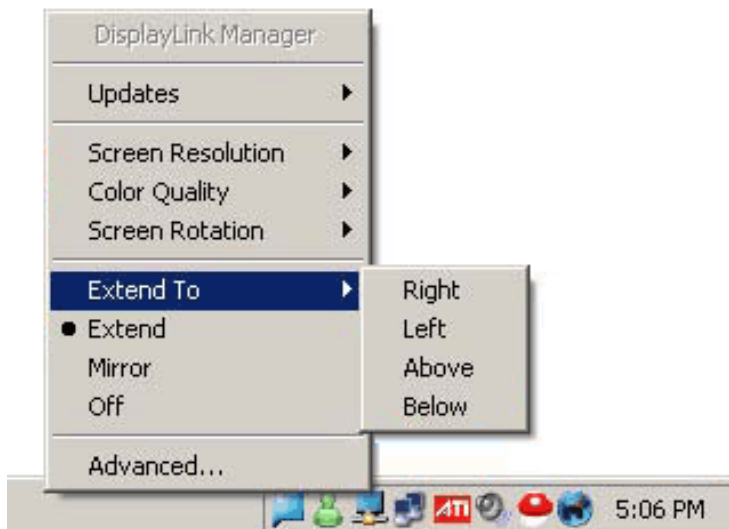
When multiple displays are connected the image can be extended separately to different monitors.

Extend To Right - Extends to the right display

Extend To Left - Extends to the right display

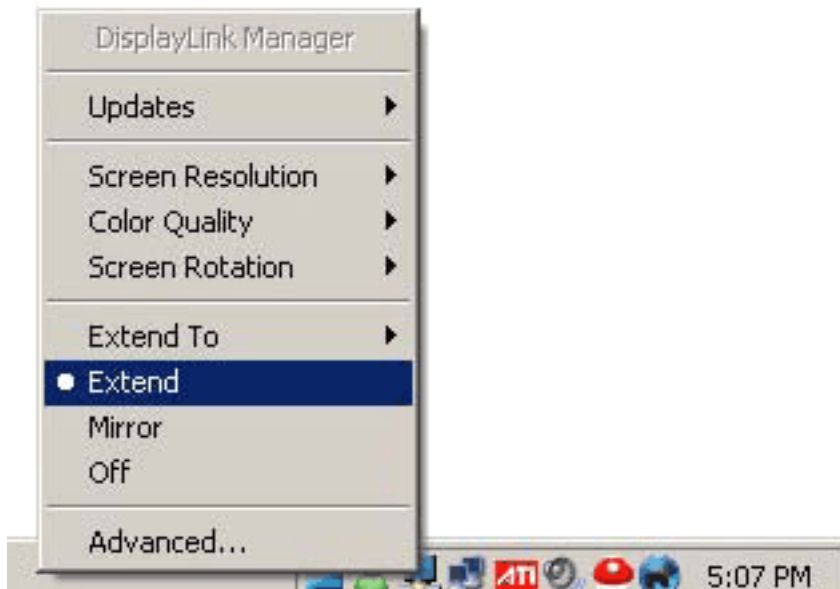
Extend to Above - Extends to above display

Extend to Below - Extends to below display



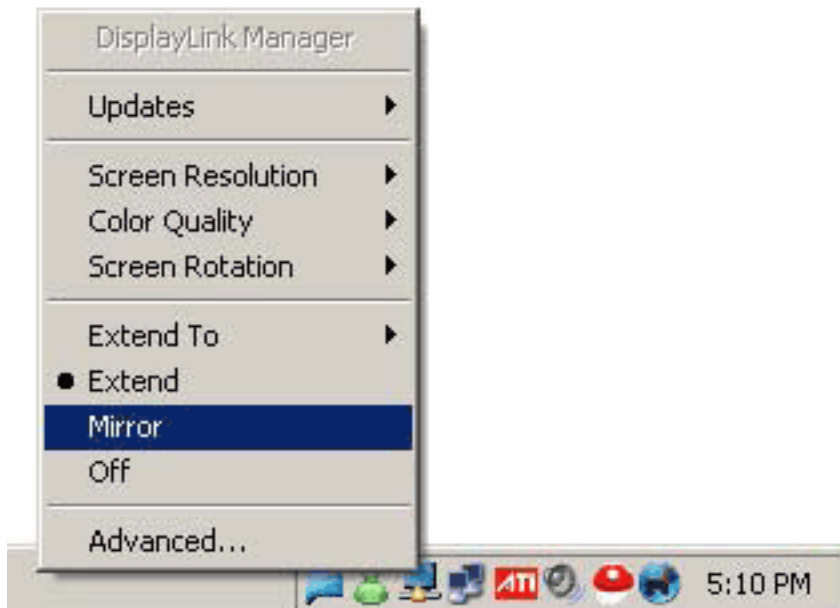
## EXTEND

Extends the desktop to second display



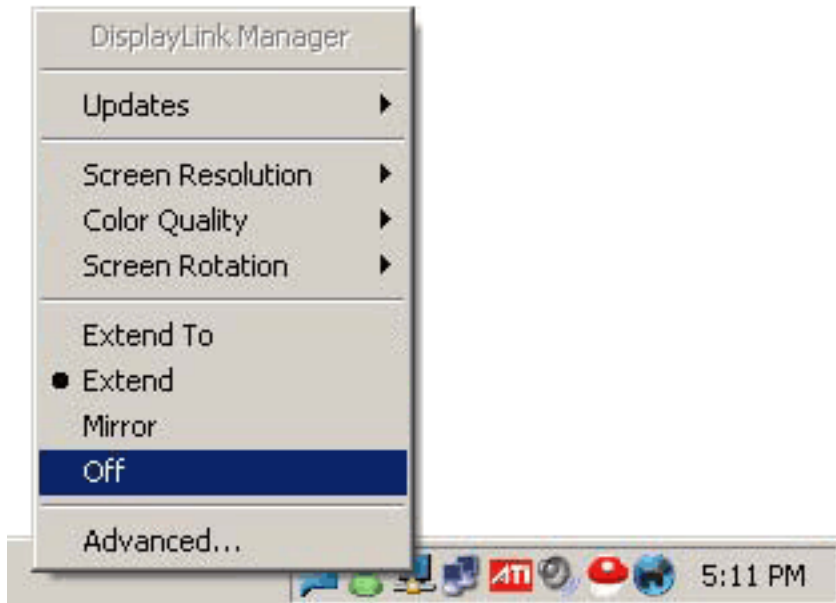
## MIRROR

Mirrors desktop to second display. When connecting to computer LCD the PC and the MAC display settings are unchanged. The max resolution that can be displayed on the mirror display is 1600x1200. If connecting to a LCD or Plasma TV the PC display settings need to be set at 1024x768 the MAC display settings are unchanged



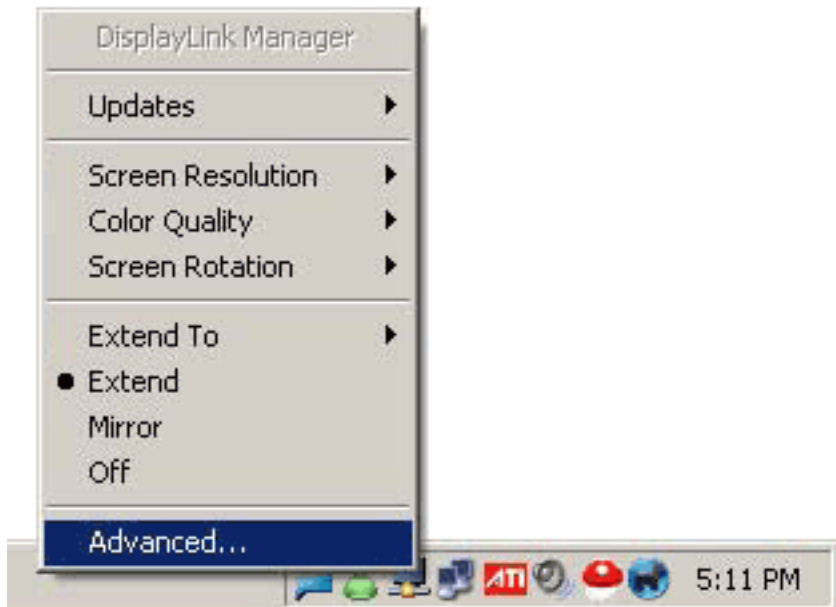
## OFF

Turns off software.



## ADVANCED

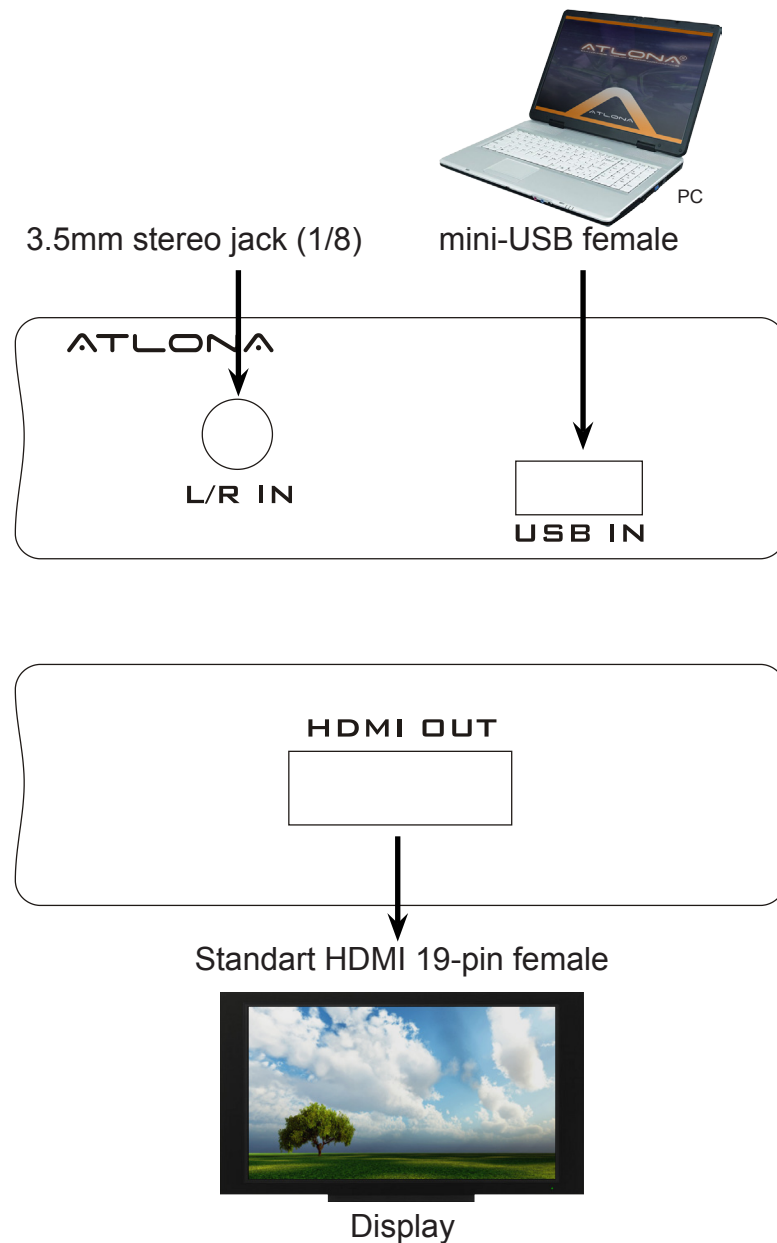
Windows Display Settings





## TECHNICAL SPECIFICATIONS

- \* Compatible with Windows 2000, XP and Vista
- \* Compatible with Mac OS 10.4.1 or higher
- \* Audio connector: 3.5mm stereo jack (1/8)
- \* USB connector: mini-USB female
- \* HDMI connector: Standard HDMI 19-pin female
- \* Dimensions: 3.2" W x 0.8" H x 2.2" D
- \* Gross Weight: 1lb



Problem	Solution
If your HDPiX doesn't turn on after being plugged in try the following:	<p>a. Turn of all Programs that are running (i.e. Internet Explorer, Microsoft Word) and reconnect the HDPiX</p> <p>b. If you have an Antivirus running, disable it and reconnect the HDPix. Once the HDPiX connects turn the Antivirus program back on.</p> <p>c. Leave the HDPiX plugged in and restart the computer.</p>
If the screen on the TV/Monitor connected through the HDPiX keeps flashing:	<p>a. If you are using a notebook, make sure the power plug is connected to the laptop.</p> <p>b. Adjust the power setting on your notebook to maximum performance.</p> <p>c. Make sure the HDPiX is connected directly to your computer and not through a USB hub.</p>
If your screen freezes during viewing video or other programs this might be due to hardware overlays. In order to turn hardware overlays do the following:	<p>a. First, you can set your media player to disable overlays. In Windows Media Player, you do this by following Tools =&gt; Options =&gt; Performance =&gt; Advanced. There are two checkboxes here to turn overlays on or off. One is for DVDs and the other is for everything else.</p> <p>b. You can also set Windows to disable hardware overlays. For Windows XP, right click on your desktop and click Properties =&gt; Settings =&gt; Advanced =&gt; Troubleshoot and move the slider all the way to the left. This will stop all overlays, system-wide.</p>
If the screen on your TV/Monitor is cutoff on the edges follow these steps:	<p><b>a. Mirrored Mode:</b></p> <p>1. Windows XP: Click Start =&gt; Control Panel =&gt; Display =&gt; Settings Adjust the resolution to 1024 by 768 and click Apply. If the screen is still cropped, change to a different resolution until one support by your TV/Monitor is found.</p> <p>2. Windows Vista: Click Start =&gt; Control Panel =&gt; Personalization=&gt; Display Settings. Adjust the resolution to 1024 by 768 and click Apply. If the screen is still cropped, change to a different resolution until one support by your TV/Monitor is found.</p> <p>3. Mac. Click on the Apple Icon on the top left corner =&gt; System Preferences =&gt; Displays. Adjust the resolution to 1024 by 768 and click Apply. If the screen is still cropped, change to a different resolution until one support by your TV/Monitor is found.</p> <p><b>b. Extended Mode:</b></p> <p>1. Windows: Click on the HDPiX Icon on the bottom right corner of the screen =&gt; Screen Resolution. Adjust the resolution to 1024 by 768 and click Apply. If the screen is still cropped, change to a different resolution until one support by your TV/Monitor is found.</p> <p>2. Mac: Click on the Apple Icon on the top left corner =&gt; System Preferences =&gt; Displays. Select the TV/Monitor that's connected through the HDPiX. Adjust the resolution to 1024 by 768 and click Apply. If the screen is still cropped, change to a different resolution until one support by your TV/Monitor is found.</p> <p>For advanced Users only: The EDID Switch on the HDPiX when left ON, allows your HDTV/Monitor to communicate supported resolutions to your computer. This switch should be left ON unless a desired resolution is not listed when attempting to adjust the resolution of the screen. Turning the EDID switch to OFF allows the HDPiX to render any resolution up to 1600 by 1200.</p>
Displaylink icon does not appear in the task bar manager	Restart the computer and reconnect the usb cable
Screens flash after install, wont stop.	If continues flashing, update graphic driver and check the manufacture website for latest version. Update display link software. Check website for latest version.

## HDPiX TROUBLESHOOTING GUIDE

Problem	Solution
HDMI cable got disconnected and reconnected no image on display	Keep HDMI cable connected, unplug and plug in the usb cable from the unit.
No image on display after screen saver/hybernation	Turn screen saver and hybernation off for best result. To get image reconnect the usb cable.
No image on display	Check HDMI cable if needed replace.
No audio	Check HDMI cable, if needed replace. Check 3.5mm if needed replace. Check computer settings, make sure there is sound prior to connecting the 3.5mm.

**Important:**

For HDPiX updates please refer to the following page: <http://thehdpix.com/download.html>

When downloading the new software please remove the old one completely from add/remove programs in system control panel.

After removing the software, restart the computer and go to the following page to download the new software <http://thehdpix.com/download.html>

After the software has been installed, if running Vista, restarting the PC for XP Windows is not necessary. The HDPiX should now work.

If the computer is not seeing the HDPiX ( the green light is not coming on; mostly refers to Vista based systems ) please do the following:

- Connect the device to an XP Windows computer and make sure light turns green.
- Download the second file which is 5.62 mb <http://thehdpix.com/download.html>
- When it is done downloading a window should appear on the screen (update/ exit).
- Hit the UPDATE button. This should update the firmware on the device.
- When it is done updating, disconnect the HDPiX and reconnect to the PC that did not recognize it.
- The HDPiX should now work

If the HDPiX is still not working after the updates, please contact the Atlona Technical Support department at: 1 877 536 3976

## SAFETY INFORMATION

* Avoid excessive humidity, sudden temperature changes or temperature extremes. Keep this product away from wet locations such as bathtubs, sinks, laundries, wet basements and swimming pools.	* Never open or remove unit panels or make any adjustments not described in this manual. Attempting to do so could expose you to dangerous electrical shock or other hazards. It may also cause damage to your AT-HDPiX.
* Use only accessories recommended by ATLONA to avoid fire, shock or other hazards.	* Opening the product will void the warranty. Do not attempt to service the unit. Instead disconnect it and contact your Authorized ATLONA reseller or contact ATLONA directly.
* Use a damp cloth for cleaning. Do not use cleaning fluid or aerosols, which could enter the unit and cause damage, fire or electrical shock. Some substances may also mar the finish of the product.	ATLONA® <a href="http://www.atlona.com">www.atlona.com</a>

**1. LIMITED WARRANTY**

Atlona Technologies warrants that (a) its products (the “Product”) will perform substantially in accordance with the accompanying written materials for a period of 3 YEARS from the date of receipt and (b) that the Product will be free from defects in materials and workmanship under normal use and service for a period of 3 years. In the event applicable law imposes any implied warranties, the implied warranty period is limited to 3 years from the date of receipt. Some jurisdictions do not allow such limitations on duration of an implied warranty, so the above limitation may not apply to Customer.

**2. CUSTOMER REMEDIES**

Atlona Technologies and its suppliers’ entire liability and Customer’s exclusive remedy shall be, at Atlona Technologies’ option, either return of the price paid for the Product, or repair or replacement of the Product that does not meet this Limited Warranty and which is returned to Atlona Technologies with a copy of Customer’s receipt. This Limited Warranty is void if failure of the Product has resulted from accident, abuse, or misapplication. Any replacement Product will be warranted for the remainder of the original warranty period or 3 year, whichever is longer.

**3. NO OTHER WARRANTIES**

TO THE MAXIMUM EXTENT PERMITTED BY APPLICABLE LAW, ATLONA TECHNOLOGIES AND ITS SUPPLIERS DISCLAIM ALL OTHER WARRANTIES, EITHER EXPRESS OR IMPLIED, INCLUDING, BUT NOT LIMITED TO IMPLIED WARRANTIES OF MERCHANTABILITY AND FITNESS FOR A PARTICULAR PURPOSE, WITH REGARD TO THE PRODUCT AND ANY RELATED WRITTEN MATERIALS. THIS LIMITED WARRANTY GIVES CUSTOMER SPECIFIC LEGAL RIGHTS. CUSTOMER MAY HAVE OTHER RIGHTS DEPENDING ON THE JURISDICTION.

**4. NO LIABILITY FOR DAMAGES**

TO THE MAXIMUM EXTENT PERMITTED BY APPLICABLE LAW, IN NO EVENT SHALL ATLONA TECHNOLOGIES OR ITS SUPPLIERS BE LIABLE FOR ANY DAMAGES WHATSOEVER (INCLUDING WITHOUT LIMITATION, SPECIAL, INCIDENTAL, CONSEQUENTIAL, OR INDIRECT DAMAGES FOR PERSONAL INJURY, LOSS OF BUSINESS PROFITS, BUSINESS INTERRUPTION, LOSS OF BUSINESS INFORMATION, OR ANY OTHER PECUNIARY LOSS) ARISING OUT OF THE USE OF OR INABILITY TO USE THIS PRODUCT, EVEN IF ATLONA TECHNOLOGIES HAS BEEN ADVISED OF THE POSSIBILITY OF SUCH DAMAGES. IN ANY CASE, ATLONA TECHNOLOGIES’ AND ITS SUPPLIERS’ ENTIRE LIABILITY UNDER ANY PROVISION OF THIS AGREEMENT SHALL BE LIMITED TO THE AMOUNT ACTUALLY PAID BY YOU FOR THE PRODUCT. BECAUSE SOME JURISDICTIONS DO NOT ALLOW THE EXCLUSION OR LIMITATION OF LIABILITY FOR CONSEQUENTIAL OR INCIDENTAL DAMAGES, THE ABOVE LIMITATION MAY NOT APPLY TO YOU.



ATLONA  
2151 O’toole Ave, Ste D  
San Jose CA 95131  
Toll Free: 1-877-536-3976  
International: 408-954-8782  
FAX: 408-954-8792  
Website: [www.atlona.com](http://www.atlona.com)  
E-MAIL: [info@atlona.com](mailto:info@atlona.com)

Thank you for purchasing this Atlona product — we hope you'll enjoy it.



We also hope that you'll take a few moments to register your new purchase. Registration creates an ownership record if your product is lost or stolen and helps ensure you'll receive notification of performance issues and firmware updates.

At Atlona, we respect and protect your privacy and assure you that your registration information is completely secure. Of course, Atlona product registration is totally voluntary and failure to register will not diminish your limited warranty rights.

To register go to [www.atlona.com/registration](http://www.atlona.com/registration)