

# QUICKSILVER 54 LAWN MOWER

## OWNER'S AND OPERATORS MANUAL

**KIT NUMBER 30-0025 (Briggs Engine)**  
**KIT NUMBER 30-0125 (Honda Engine)**

**CUSTOMER MUST RECEIVE A COPY OF  
THIS OWNERS MANUAL AT TIME OF SALE**

1701 38TH AVE W  
PO BOX 229  
SPENCER, IA 51301  
FAX: 712-262-0248  
SERVICE: 800-841-2222  
E-MAIL: ccac@cyclecountry.com

## **ONE YEAR LIMITED WARRANTY**

For the period of one year from the purchase date Cycle Country Accessories Corporation will replace for the original purchaser, free of charge, any part or parts, when found, upon examination by Cycle Country Accessories Corporation, to be defective in material, workmanship, or both.

All transportation cost incurred by the purchaser in submitting the material to Cycle Country Accessories Corporation for replacement under this warranty must be borne by the purchaser. If Cycle Country Accessories Corporation determines that the product must be returned to the factory for credit please call 1-800-841-2222 for an RMA number and shipping instructions.

The warranty does not apply to parts that have been damaged by accident, alteration, abuse, improper lubrication, normal wear, or other causes beyond Cycle Country Accessories Corporation's control. Products such as engines, electric motors, and actuators may carry an original manufacturer's warranty. Please call Cycle Country Accessories Corporation for information.

**THANK YOU FOR YOUR PURCHASE OF OUR**

# **QUICKSILVER 54**

**FINISH MOWER**

**ENCLOSED IN THIS KIT IS THE**

## **MOWER DECK ASSEMBLY**

**YOU CAN CHOOSE TO MOUNT THE MOWER ON THE FRONT OF YOUR ATV (A) OR PULL THE MOWER BEHIND YOUR ATV (B).**

**A. TO HAVE A COMPLETE FRONT MOUNT MOWER ASSEMBLY, YOU MUST HAVE AT LEAST THREE ITEMS:**

- 1. MODEL SPECIFIC ATTACHING HARDWARE KIT TO ATTACH THE LAWN MOWER/PUSH TUBE TO ATV. (YOU ALREADY HAVE THIS IF YOU HAVE OUR WP-5 OR WP-2000 SNOW BLADE PUSH TUBE SYSTEM.)**
- 2. LAWN MOWER PUSH TUBE & PIVOT #30-0028**
- 3. MOWER DECK ASSEMBLY #30-0025 or #30-0125**

**B. TO HAVE A COMPLETE TOW BEHIND MOWER ASSEMBLY, YOU MUST HAVE THE TWO FOLLOWING ITEMS:**

- 1. TOW BEHIND KIT #30-0080**
- 2. MOWER DECK ASSEMBLY #30-0025 or #30-0125**

BEFORE OPERATING THE **QUICKSILVER 54** LAWN MOWER—READ AND UNDERSTAND ALL OPERATING AND ASSEMBLY INSTRUCTIONS COVERED IN THIS MANUAL.

**WARNING**

The **QUICKSILVER 54** is a powerful cutting machine and is capable of amputating hands and feet and can also throw materials that can cause damage to you or your property.

**PLEASE READ ALL INSTRUCTIONS IN THIS MANUAL VERY CAREFULLY.**

**IF YOU HAVE ANY QUESTION PLEASE CONSULT YOUR DEALER OR  
CYCLE COUNTRY DIRECTLY AT 1-800-841-2222**

**IMPORTANT PRECAUTIONS:**

**DO NOT ALLOW** children to ride on the ATV or lawn mower at any time,

**DO NOT ALLOW** children to operate the lawn mower.

Only responsible persons with mature judgment should be allowed to operate the lawn mower.

Read and follow all instructions.

Wear appropriate protective clothing when mowing such as boots and long pants.

Never operate under the influence of drugs or alcohol.

Know how to stop engine and blades quickly in case of emergency.

Keep all people and pets at a safe distance from lawn mower.

All shields, switches and blade controls must be in proper position and functional before using mower.

Clear the area to be mowed of all wire, rocks, and other objects that could cause injury if thrown by the blades.

Shut off engine before leaving the ATV. Remove key when leaving the ATV and mower unattended.

Do not try to operate the lawn mower unless properly seated on the ATV.

Stop engine, and disconnect spark plug wire before attempting to unclog grass or leaves from the mower.

Do not operate with belt covers removed for any reason.

Service and make adjustments only when the engine is stopped.

Tighten all bolts, nuts, and screws frequently and replace worn or broken parts.

Handle gasoline with care!!! Never remove cap while engine is running. Fill tank outdoors only with engine stopped and cool.

Stop engine except when cutting grass.

Mow in reverse only after careful observation of entire area behind the lawn mower. DO NOT mow in reverse unless absolutely necessary.

## OPERATION INSTRUCTIONS

THE QUICKSILVER 54 IS DESIGNED TO MOW AT APPROXIMATELY 5 MPH. DO NOT EXCEED 5 MPH WITH THE MOWER ATTACHED TO THE ATV.

1. Check over your ATV to insure that it is in good working order.
2. Check over the lawn mower. All guards and covers must be in proper position.
3. Check exterior surfaces of the lawn mower. Clean up any accumulation of grass, oil, or gas especially around air intakes and cooling fins on the engine.
4. Check engine oil and add as needed. (SEE ENGINE OWNER'S MANUAL.)
5. Fill fuel tank outdoors where fumes will dissipate.

## MAINTENANCE

1. Stop engine and disconnect spark plug wire before attempting to unclog lawn mower.
2. Service the lawn mower and make adjustments only when the engine is stopped.
3. Tighten all nuts, bolts, and screws frequently and check, adjust, and replace parts as needed.
4. Maintain proper belt tension at all times.
5. Check exterior surfaces of the lawn mower. Clean up any accumulation of grass, oil, or gas especially around air intakes and cooling fins on the engine. Failure to keep engine clean and free from cooling air restrictions will cause engine to run hot and may cause severe damage.
6. Check engine oil and add as needed. (SEE ENGINE OWNER'S MANUAL)
7. Recheck belt tensioner idler height periodically and at each oil change.
8. Grease tensioner arm, wheel and wheel spindle zerks at each oil change.
9. **Cutting Blade Service:** Before doing any work on the blades, remember to disconnect the spark plug wire and secure it away from the spark plug to prevent unintentional starting. Have blades

replaced if they become bent or chipped from impacting solid objects or when the cutting surface becomes dull from extended use.

10. Check the blade and spindle retaining nuts and bolts at frequent intervals to make sure the blades and spindles remain tight.

## **STARTING – STOPPING**

1. To start engine, place throttle in choke position, turn key to start. When engine starts, move throttle to idle position.
2. To stop engine, move throttle or key to stop position.

**WARNING! THE ONLY WAY TO INSURE THAT THE BLADES ARE STOPPED IS TO SHUT OFF THE ENGINE! DO NOT RELY ON THE CLUTCH TO DISENGAGE THE BLADES WITH THE ENGINE RUNNING!!!**

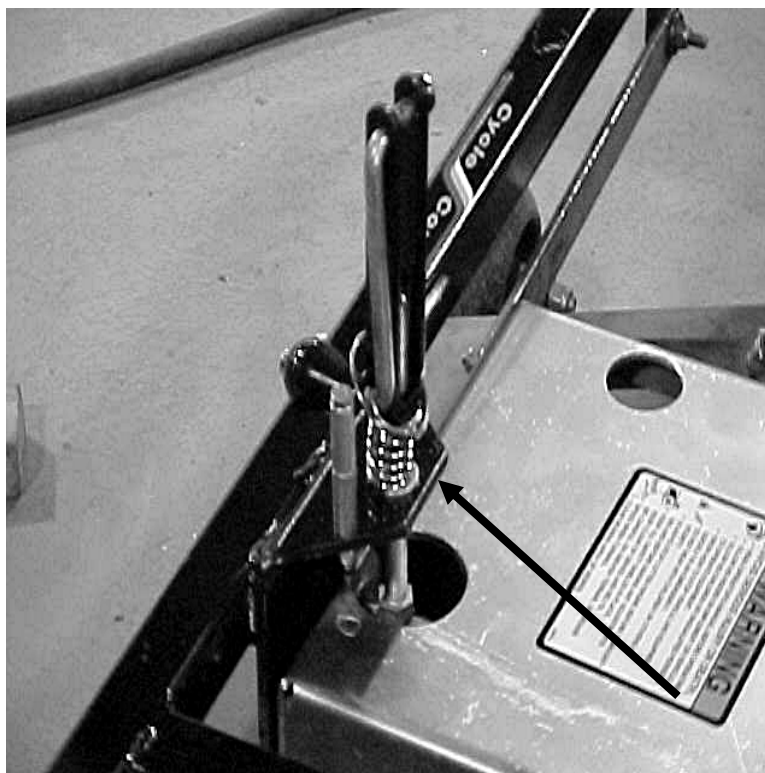
## **OPERATIONAL CHECKS**

- **OIL MUST BE PUT IN THE ENGINE BEFORE STARTING!**
- **Prepare the engine according to the ENGINE OWNER'S MANUAL.**
- **Install the Attaching Hardware according to instructions.**
- **Re-check belt alignment and tension frequently.**
- **Periodically check all nuts and bolts for tightness.**
- **Check blade and spindle nuts and bolts at frequent intervals.**

## ASSEMBLY INSTRUCTIONS:

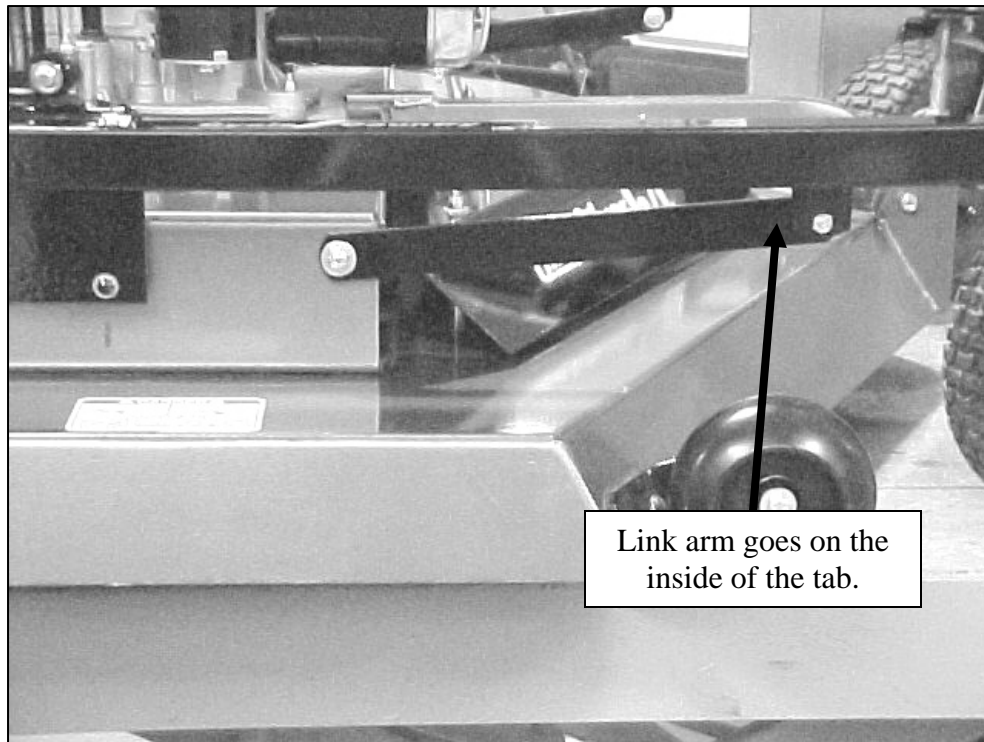
### DECK & FRAME

1. Disassemble shipping crate sides and top leaving the mower deck and main frame on the crate base.
2. Lift and rotate the main frame, setting it down so the three lift brackets on the main frame are above the three eyebolts in the mower deck. Insert each of the eyebolts up through the brass bushings. Install one 1/2" SAE flat washer on each eyebolt and then the PUR1566 spring followed by another 1/2" SAE flat washer and then screw down the CYC3478 crank handles to raise the mower deck. *See picture below.*

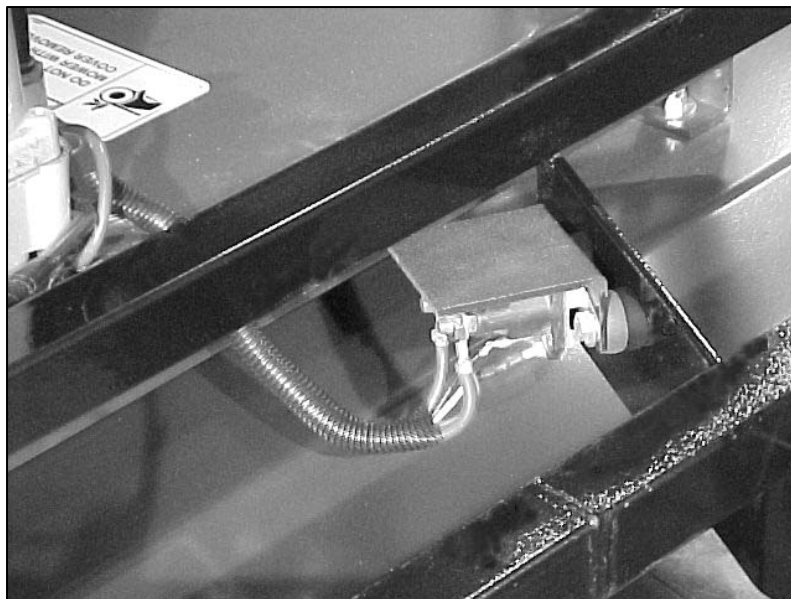


The handle stop is to keep the handle from spinning when the mower is in use. Included with the parts bag are three rings. Drop one ring over each of the crank handles to restrict movement and ensuring effectiveness of the handle stop.

3. Attach and secure the left and right link arms to the main frame using the bolts and bushings provided. NOTE: The link arm goes on the inside of the tab on the main frame.



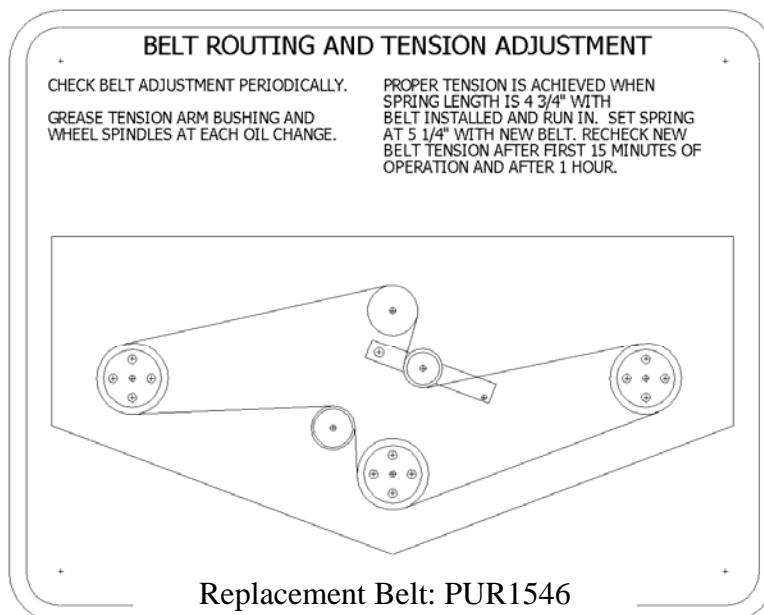
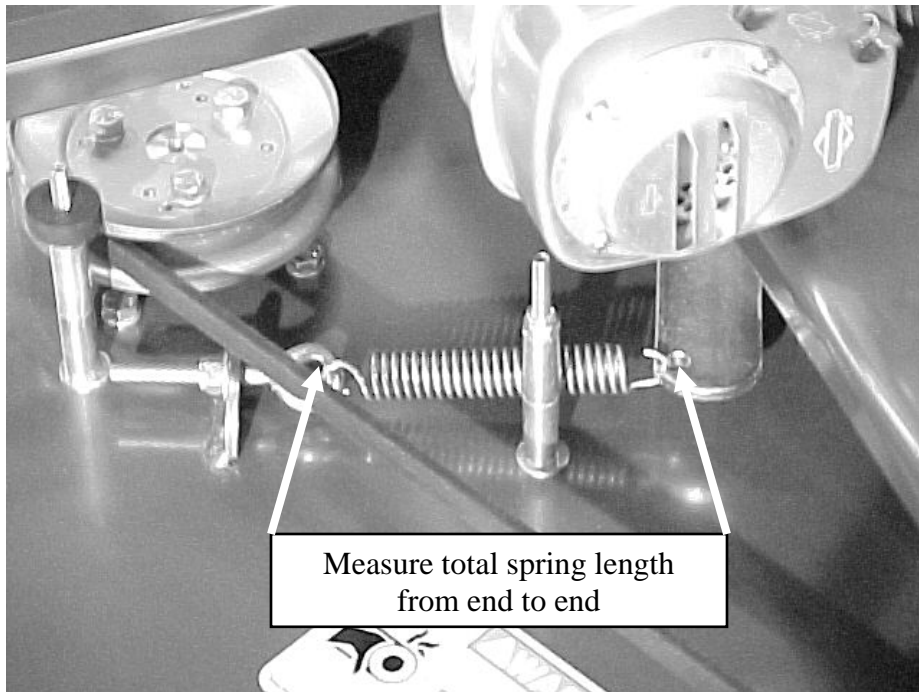
4. Attach the solenoid-starter relay assembly to the mower tube frame (right side) as shown in picture below. Note: Not included for Honda equipped mowers.





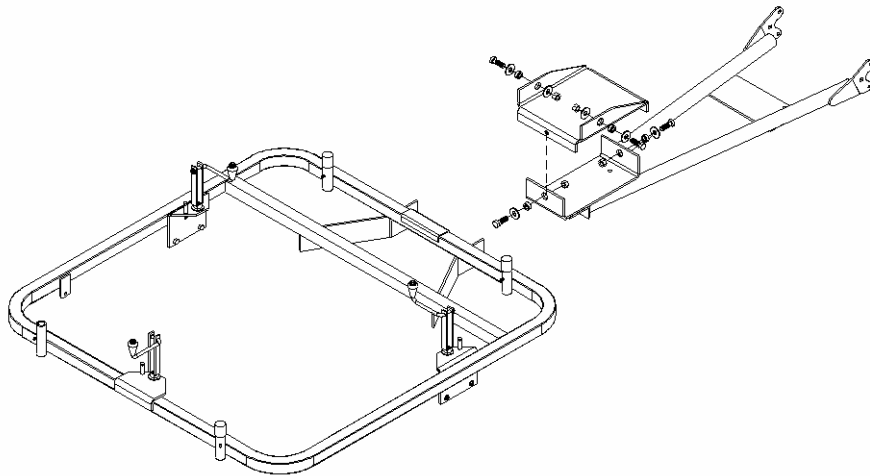
## BELT ROUTING AND ADJUSTMENT

1. The spring end-to-end length is set at 5-1/4" from the factory. The spring length **MUST BE** checked after running 15 minutes and again after mowing for an hour. Check spring length again after a few hours of mowing. After the belt is 'RUN-IN', the correct spring length is 4-3/4"-5". Measurements are taken from the spring ends. *See picture below.*



## OPTIONAL 30-0028 PUSH TUBE ASSEMBLY

1. If you have purchased the optional 30-0028 lawn mower push tube assembly, assemble it at this time as per the instructions enclosed in that package. NOTE: The pivot in that kit is installed on the push tube assembly **UPSIDE DOWN FOR PACKAGING PURPOSES**. Remove it and reinstall it as shown in the drawing below.



2. Attach the pivot/push tube assembly to the Quicksilver 54 frame as show above.
3. Attach the push tube assembly to the push tube attaching brackets on the ATV, using the 3/8" x 1" clevis pins and #3 hairpins included with the attaching bracket kit.

## WIRING AND CONTROLS

1. **WIRE ATTACHMENT.** Using a wire tie or electrical tape, attach the ATV wiring harness to the front of the ATV brush guard so that the gray connector hangs free about 4" out from the front of the ATV. Route the **Red (+)** positive cable along the frame of the ATV to the battery, using care to route it away from exhaust system and areas where it might chafe or burn. Use the most direct route. Cut off the excess cable. Attach the ring terminal eyelet connector to the end of the cable and attach to the positive (+) terminal of the battery. Secure wire along the frame using wire ties or electrical tape. Attach the **Black (-)** negative ground cable at the nearest ground point on the ATV. (Example: a front bumper frame bolt.) Connect the gray ATV wiring harness to the gray mower wiring harness.

2. **CONTROL MOUNTING:** Refer to pictures on following pages, depending on the type of ATV you have.

### **POLARIS COMPOSITE RACK**



The mounting of the control panel base to the Polaris rack requires the customer to remove the tube rail from the front rack as shown.

To mount the controls to the Polaris rack, use:

- (2) 1/4" x 1-1/16" x 1-5/8" Square U-Bolts
- (2) 1/4" Flat Washers
- (2) 1/4" Nylock Nuts

Secure the Control Panel Base to the rack as shown above.

### **KAWASAKI COMPOSITE RACK**



To mount the controls to the Kawasaki composite rack, use:

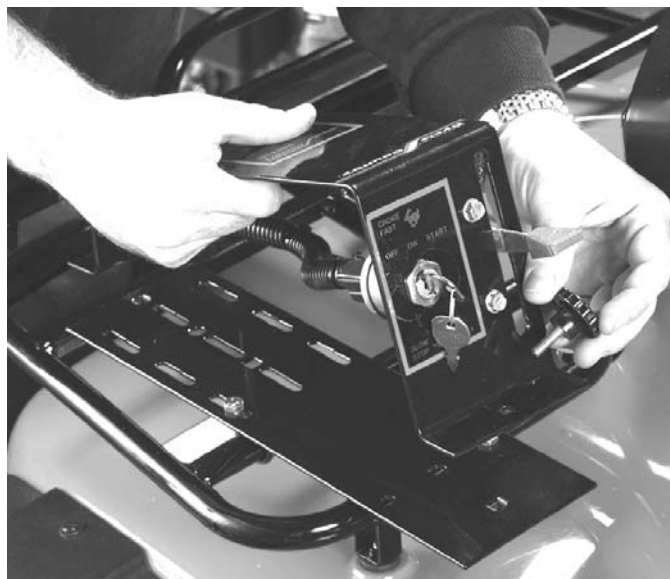
- (2) 8mm x 50mm bolts
- (2) 5/16" lock washers
- (2) 7/8" U-clamp spacers
- (2) 5/16" flat washers

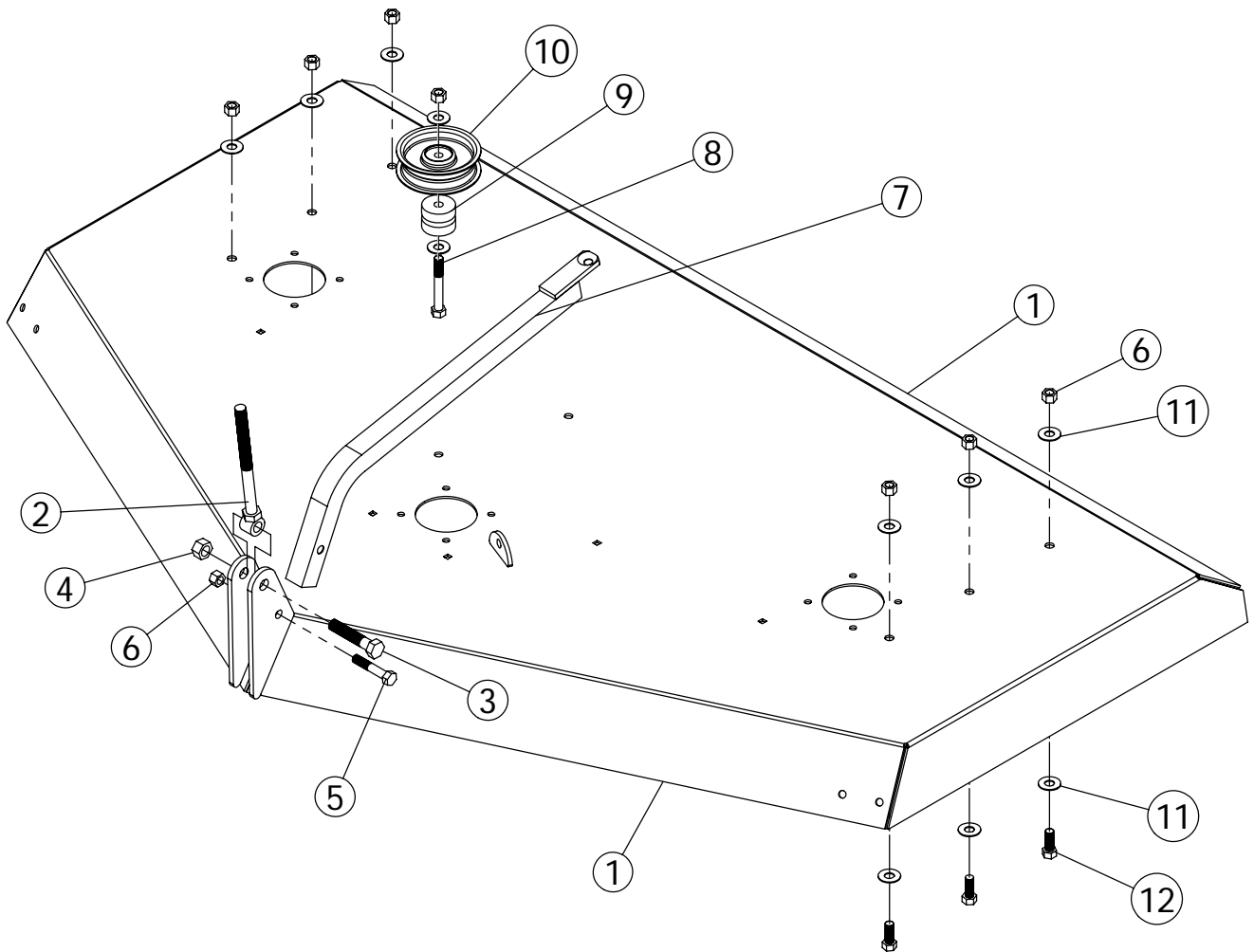
Remove the two hold down bolts as shown on previous page. Place the flat washers and spacers under the control panel base and fasten securely using the lock washer and metric bolt.

## STANDARD TYPE TUBE FRONT RACK



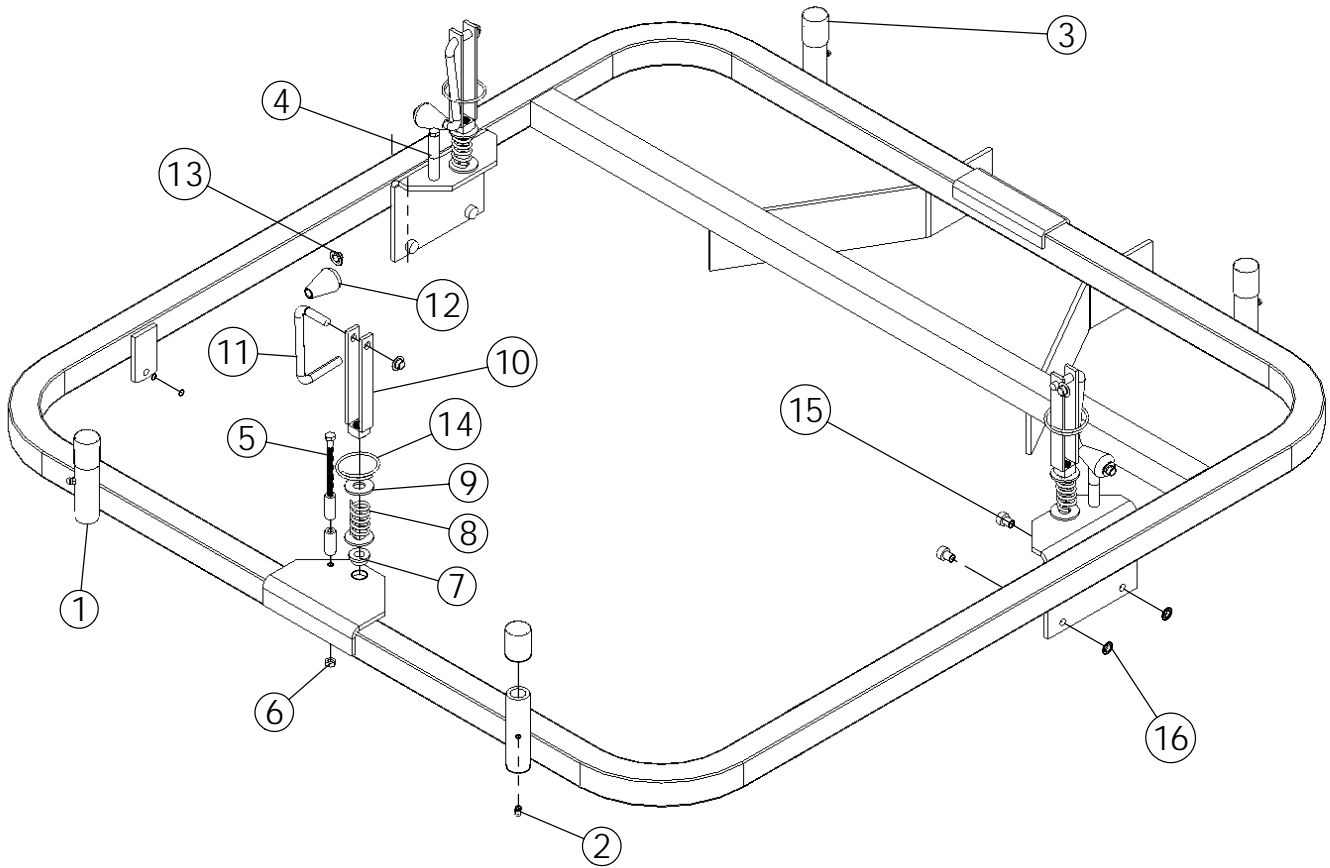
To mount the control panel base to a tube type front rack, use the vinyl covered clamps, 1/4" x 1" bolts, 1/4" flat washers and 1/4" nylock nuts provided and secure it in at least two points. Refer to the pictures for suggested methods. There are two sizes of clamps included in the kit to allow the controls to be mounted to virtually any type tube rack. The control panel is designed to be easily removed using the two clamp knobs. This allows the control panel base to remain on the ATV when the mower is not in use. *See picture below.*





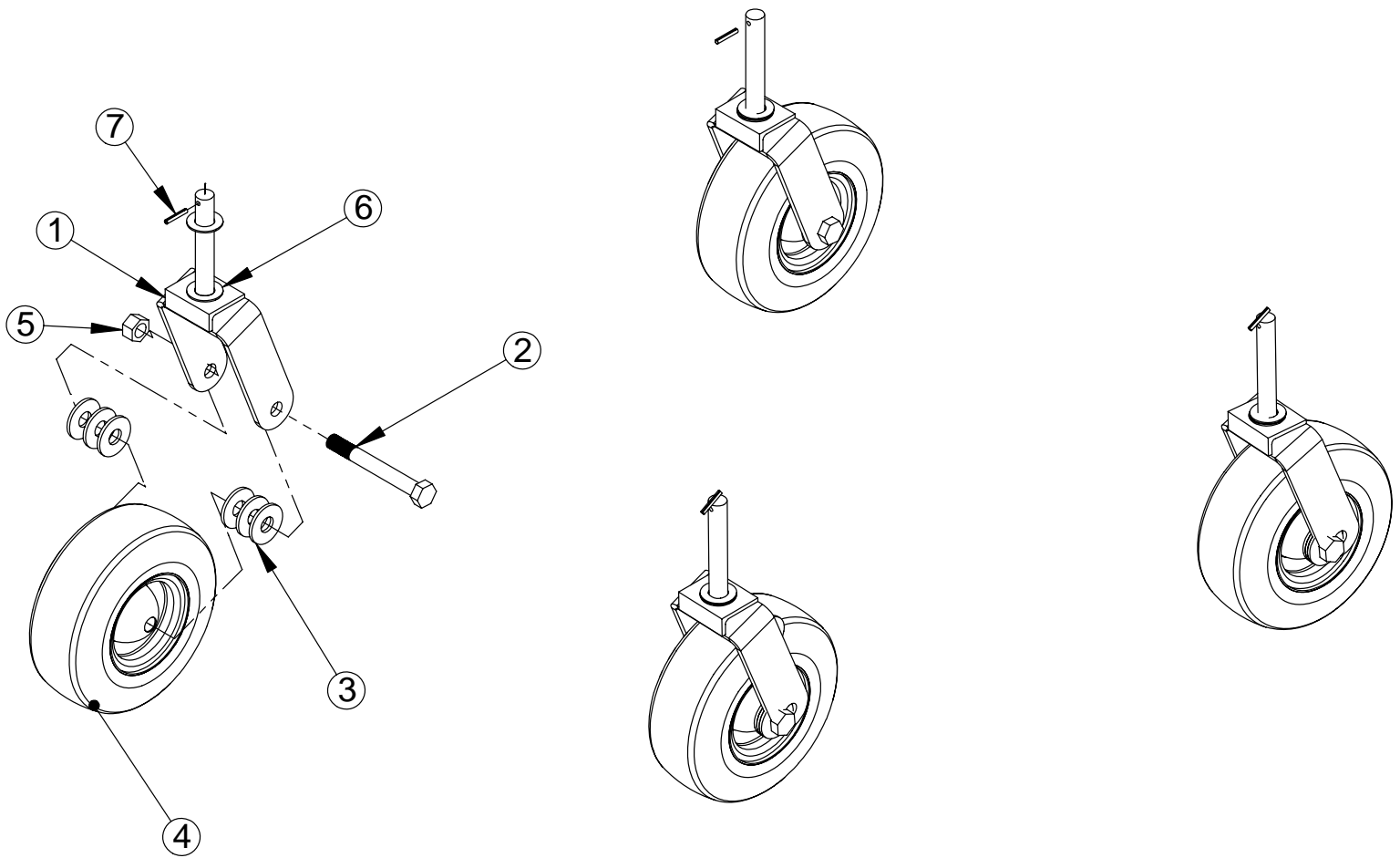
### Deck Assembly Parts List

ITEM NO.	QTY.	PART NO.	DESCRIPTION
1	1	CYC3457	Mower Deck
2	1	CYC3495	Eyebolt
3	1	PUR1112	1/2" x 2-1/2" Bolt
4	1	PUR1261	1/2" Nylock Nut
5	1	PUR1145	3/8" x 2" Bolt
6	8	PUR1272	3/8" Nylock Nut
7	1	CYC3472	Motor Mount Support Bar
8	1	PUR1148	3/8" x 2-3/4" Bolt
9	2	CYC3479	Belt Idler Spacer
10	1	PUR1551	Idler Pulley
11	14	PUR0250	3/8" Flat Washer
12	6	PUR1140	3/8" x 1" Bolt



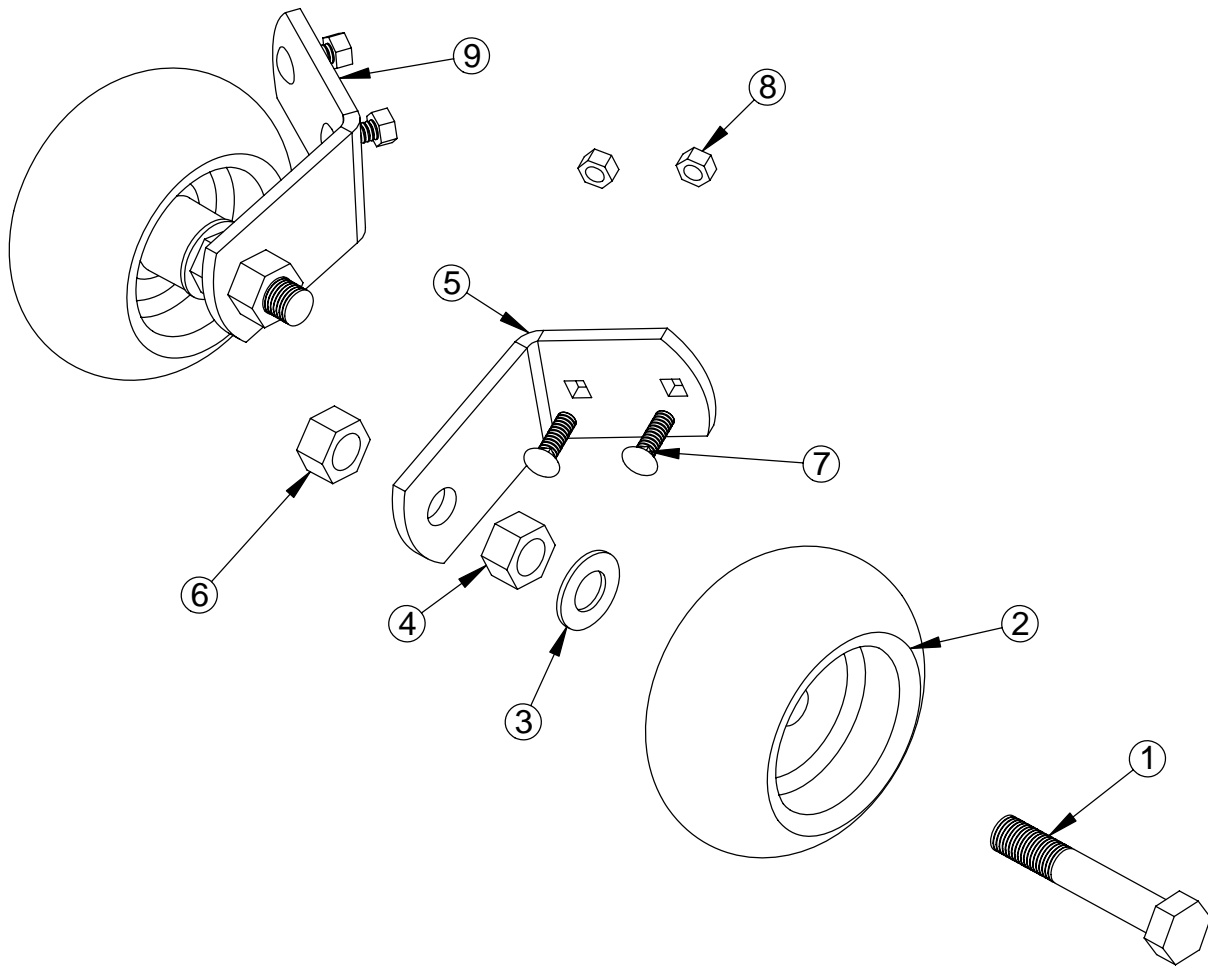
## Main Frame Assembly Parts List

ITEM NO.	QTY.	PART NO.	DESCRIPTION
1	1	CYC3461	Main Frame
2	4	PUR1603	Grease Zerk
3	4	PUR1077	1-1/8" x 1-1/2" Cap
4	6	PUR1848	Mount Bracket Spacer
5	3	PUR1129	1/4 x 3-1/4" Bolt
6	3	PUR1265	1/4" Nylock Nut
7	3	PUR1591	1/2" x 3/4" x 1" Shoulder Bushing
8	3	PUR1556	QS54 Spring Height Adjustment
9	6	PUR1235	1/2" Flat Washer SAE
10	3	CYC3476	Crank Channel
11	3	CYC3478	Crank Handle
12	3	PUR1590	Knob
13	6	PUR1353	3/8" Push Nut
14	3	PUR1813	Ring
15	4	PUR1474	Plastic Button
16	4	PUR1354	3/8" Flat PAL Nut



## Wheel Caster Assembly Parts List

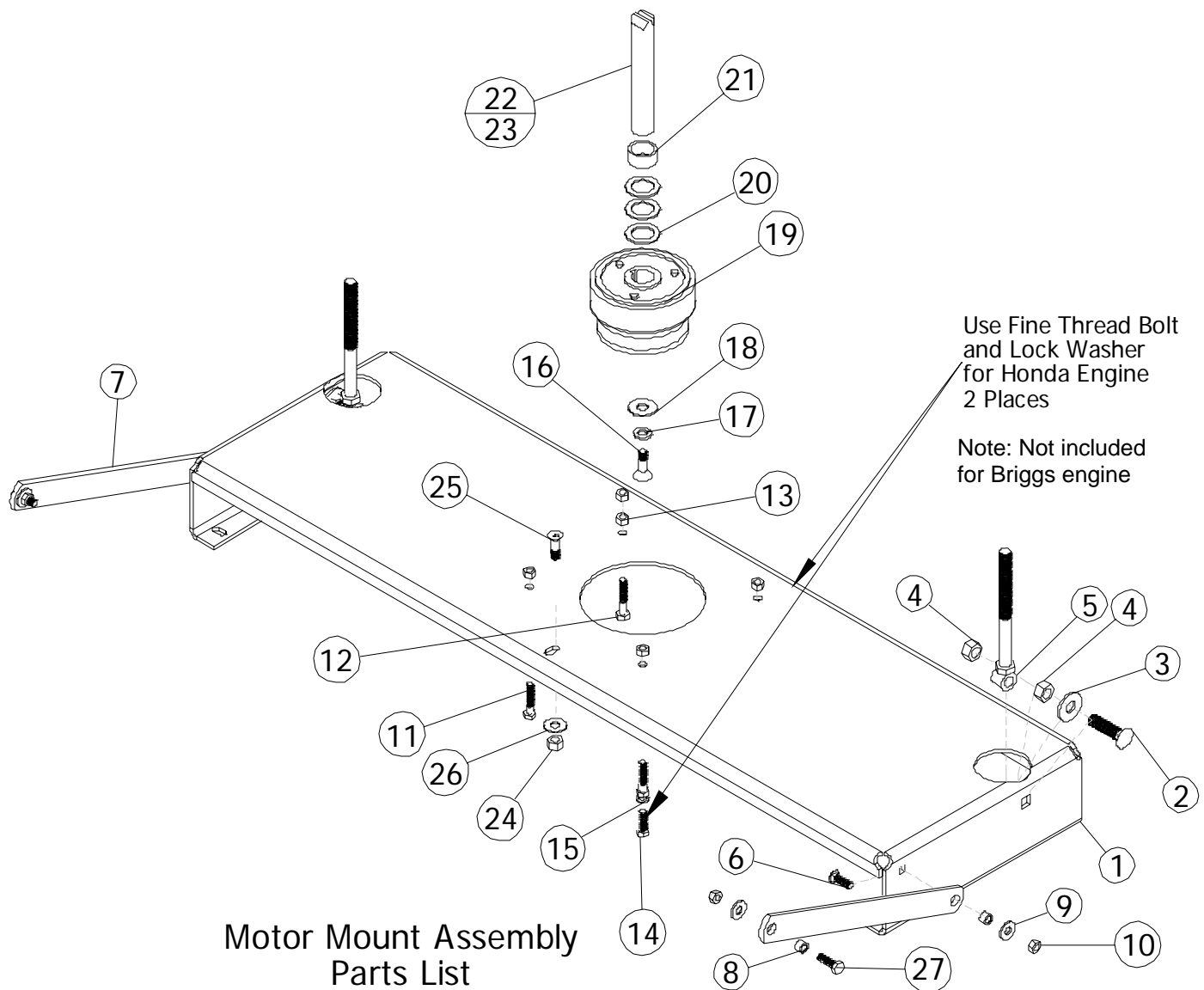
ITEM NO.	QTY.	PART NO.	DESCRIPTION
1	4	CYC3484	Wheel Spindle
2	4	PUR1171	5/8" x 5" Bolt
3	24	PUR1245	5/8" Flat Washer
4	4	PUR1543	Wheel
5	4	PUR1283	5/8" Nylock Nut
6	8	PUR1240	14 Gauge Machine Bushing
7	4	PUR1364	3/16" x 1-1/8" Roll Pin



## Corner Wheel Assembly Parts List

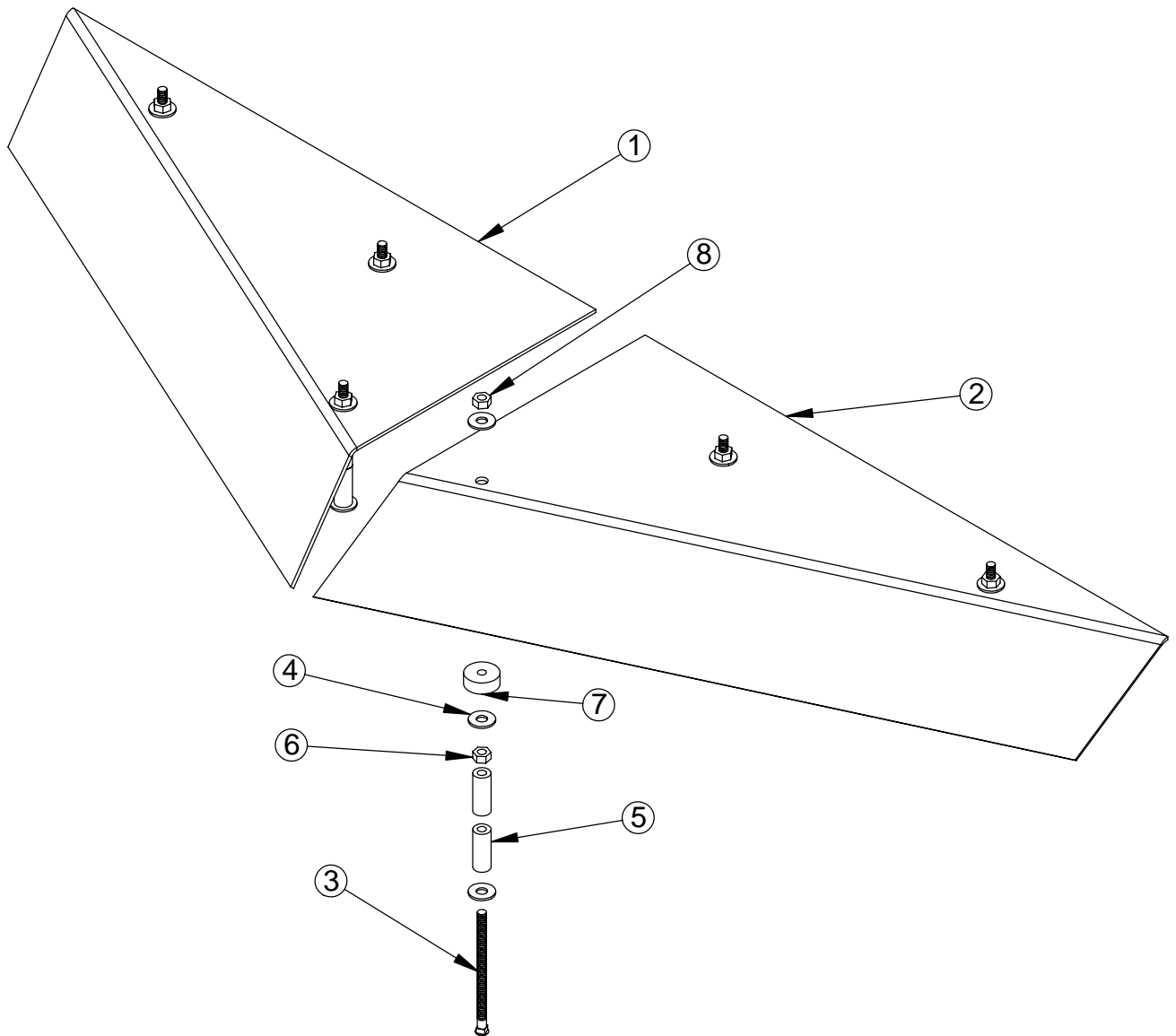
ITEM NO.	QTY.	PART NO.	DESCRIPTION
1	2	PUR1170	5/8" x 3-1/2" Bolt
2	2	PUR1547	Corner Wheel
3	2	PUR1246	Flatwasher 5/8 SAE
4	2	PUR1258	5/8" Jam Nut
5	1	CYC3491	Left Corner Wheel Bracket
6	2	PUR1283	5/8" Nylock Nut
7	4	PUR1189	5/16" x 1" Carriage Bolt
8	4	PUR1275	5/16" Nylock Nut
9	1	CYC3493	Right Corner Wheel Bracket





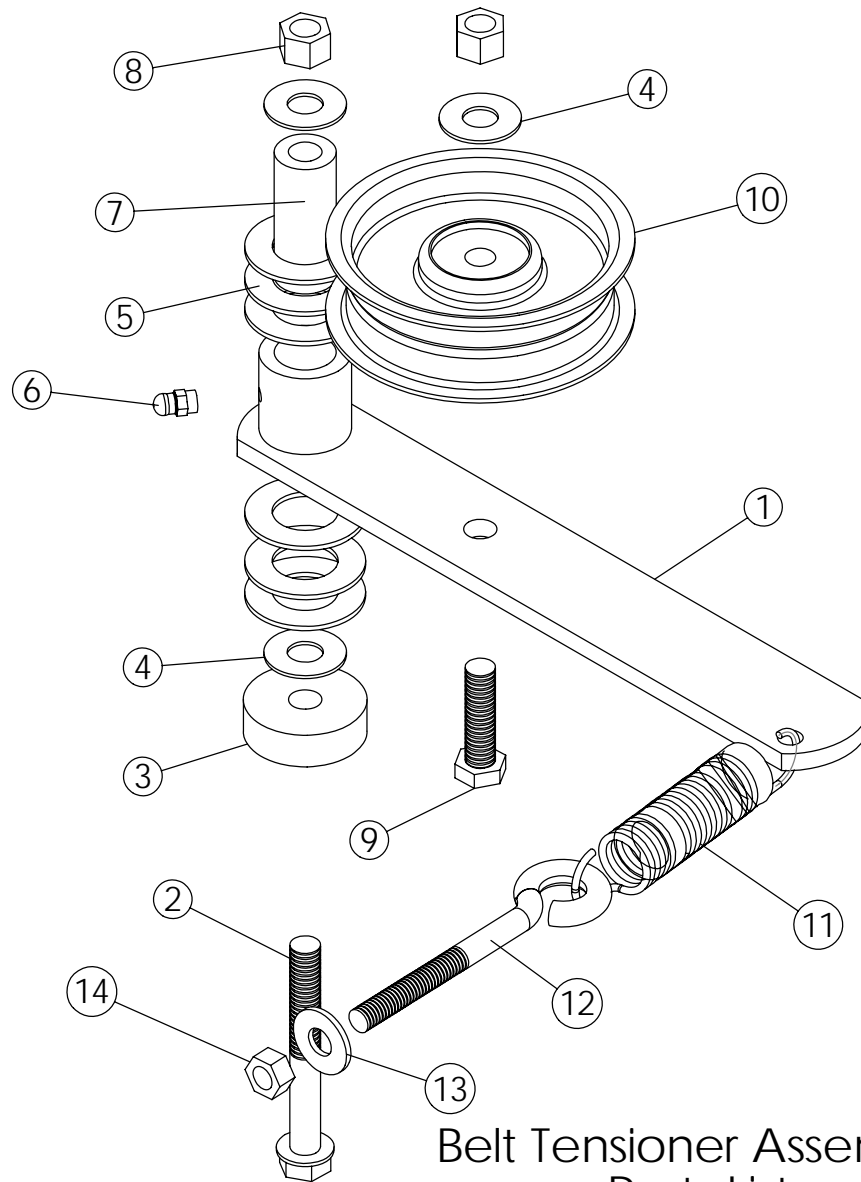
Motor Mount Assembly  
Parts List

NO.	QTY.	PART NO.	DESCRIPTION	NO.	QTY.	PART NO.	DESCRIPTION
1	1	CYC3471	Motor Mount	17	1	PUR1295	7/16" Lock Washer
2	2	PUR1178	1/2" x 2" Carriage Bolt All Thread	18	1	PUR1248	7/16" Flat Washer
3	2	PUR1233	1/2" Flat Washer	19	1	PUR0678	Engine Drive Clutch
4	4	PUR1260	1/2" Center Lock Nut Yellow	20	3	PUR1301	1" x 1-1/2" Machine Bushing
5	2	CYC3495	Eyebolt	21	1	CYC5442	Bushing Mower Clutch QS Mower
6	2	PUR1189	5/16" x 1" Carriage Bolt	22	1	PUR1531	Briggs Engine
7	2	CYC3475	Link Arm	23	1	PUR1542	Honda Engine
8	4	PUR1360	Sleeve Bushing	24	1	PUR1272	3/8" Nylock Nut
9	4	PUR1244	5/16" Flat Washer	25	1	PUR1322	3/8" x 1" Flat Head Bolt
10	8	PUR1275	5/16" Nylock Nut	26	1	PUR0250	3/8" Flat Washer
11	3	PUR1156	5/16" x 1-1/2" Bolt	27	2	PUR1155	5/16" x 1" Bolt
12	1	PUR1159	5/16" x 1-3/4" Bolt				
13	1	PUR1278	5/16" Serrated Flange Hex Nut				
14	2	PUR1932	5/16" x 1" Fine Thread Bolt				
15	2	PUR1293	5/16" Lock Washer				
16	1	PUR1229	7/16" x 1" Allen Head Bolt				



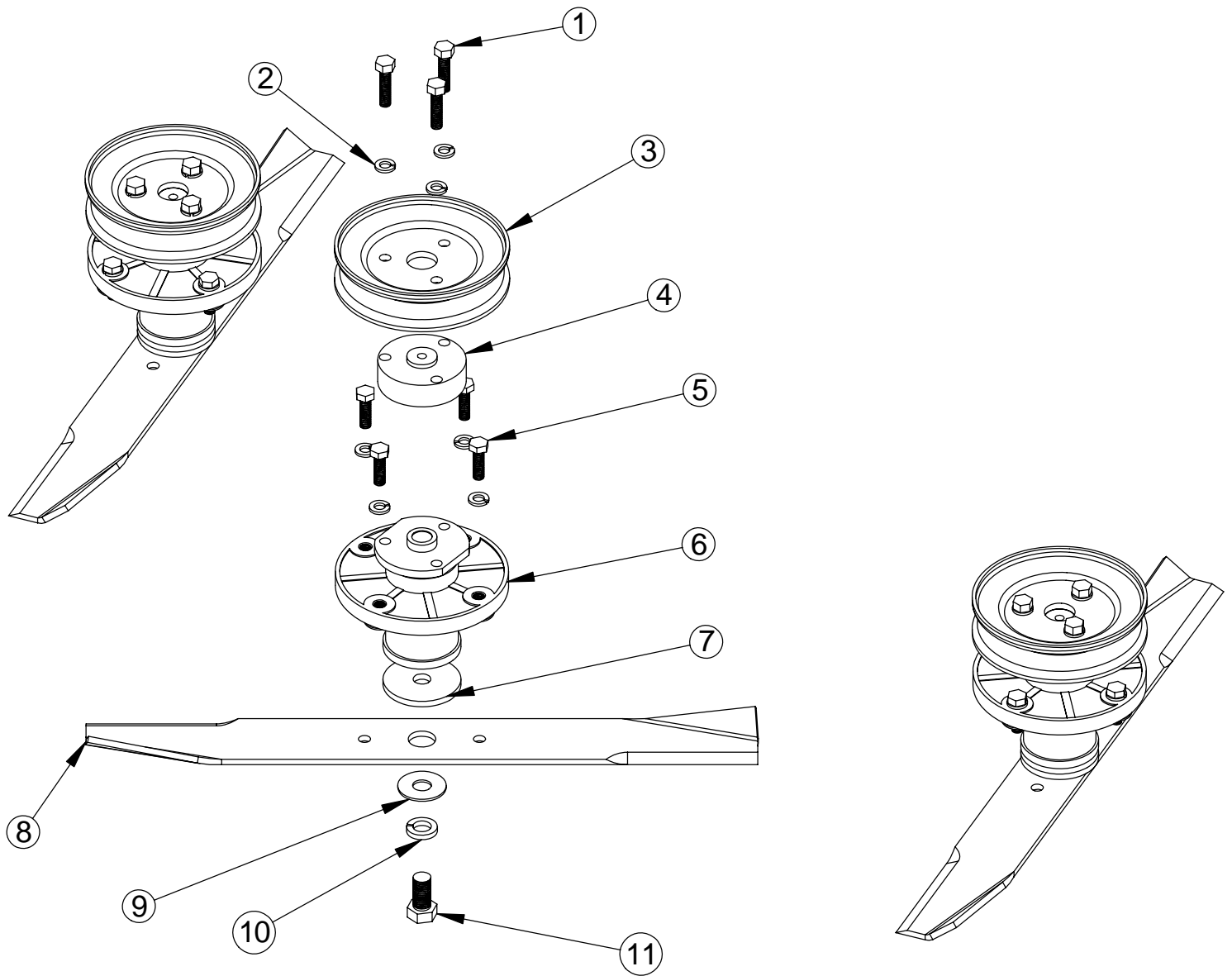
## Belt Cover Assembly Parts List

ITEM NO.	QTY.	PART NO.	DESCRIPTION
1	1	CYC3501	Right Belt Cover
2	1	CYC3502	Left Belt Cover
3	6	PUR1184	1/4" x 4" Carriage Bolt Full Thread
4	18	PUR1237	1/4" Flat Washer
5	12	PUR1848	Mount Bracket Spacer
6	6	PUR1265	1/4" Nylock Nut
7	6	PUR1589	1/4" x 1" x 3/8" Rubber Stop
8	6	PUR1334	1/4" Nut



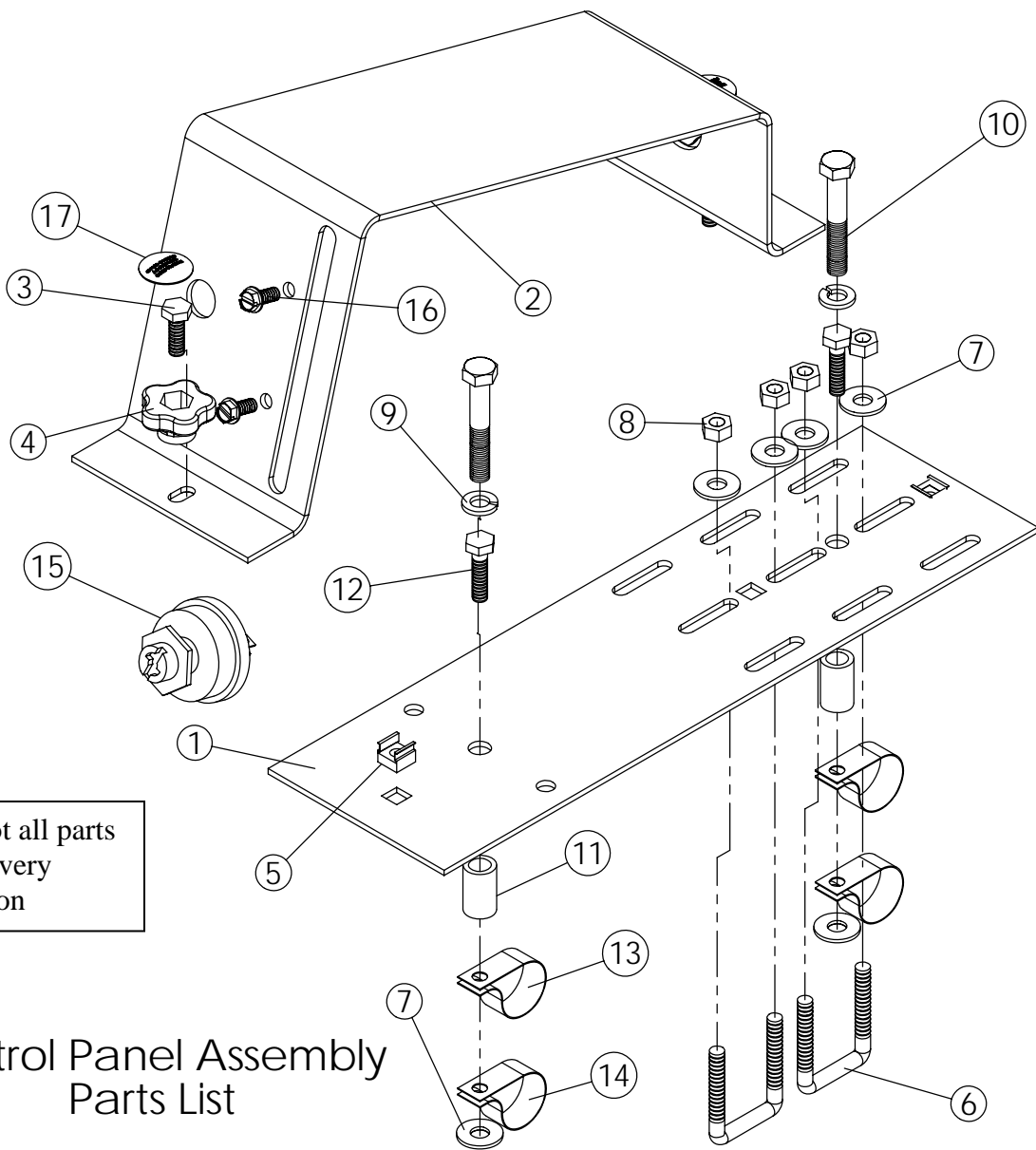
Belt Tensioner Assembly  
Parts List

ITEM NO.	QTY.	PART NO.	DESCRIPTION
1	1	CYC3481	Belt Tensioner
2	1	PUR1152	3/8" x 3-1/4" Bolt
3	1	CYC3479	Belt Idler Spacer
4	3	PUR0250	3/8" Flat Washer
5	6	PUR1240	14 Gauge Machine Bushing
6	1	PUR1603	Grease Zerk
7	1	CYC3480	Belt Tensioner Bushing
8	2	PUR1272	3/8" Nylock Nut
9	1	PUR1143	3/8" x 1-3/4" Bolt
10	1	PUR1551	Idler Pulley
11	1	PUR1437	Belt Tension Spring
12	1	PUR1216	5/16" x 4-1/4" Eye Bolt
13	1	PUR1244	5/16" Flat Washer
14	1	PUR1275	5/16" Nylock Nut



## Blade Spindle Assembly Parts List

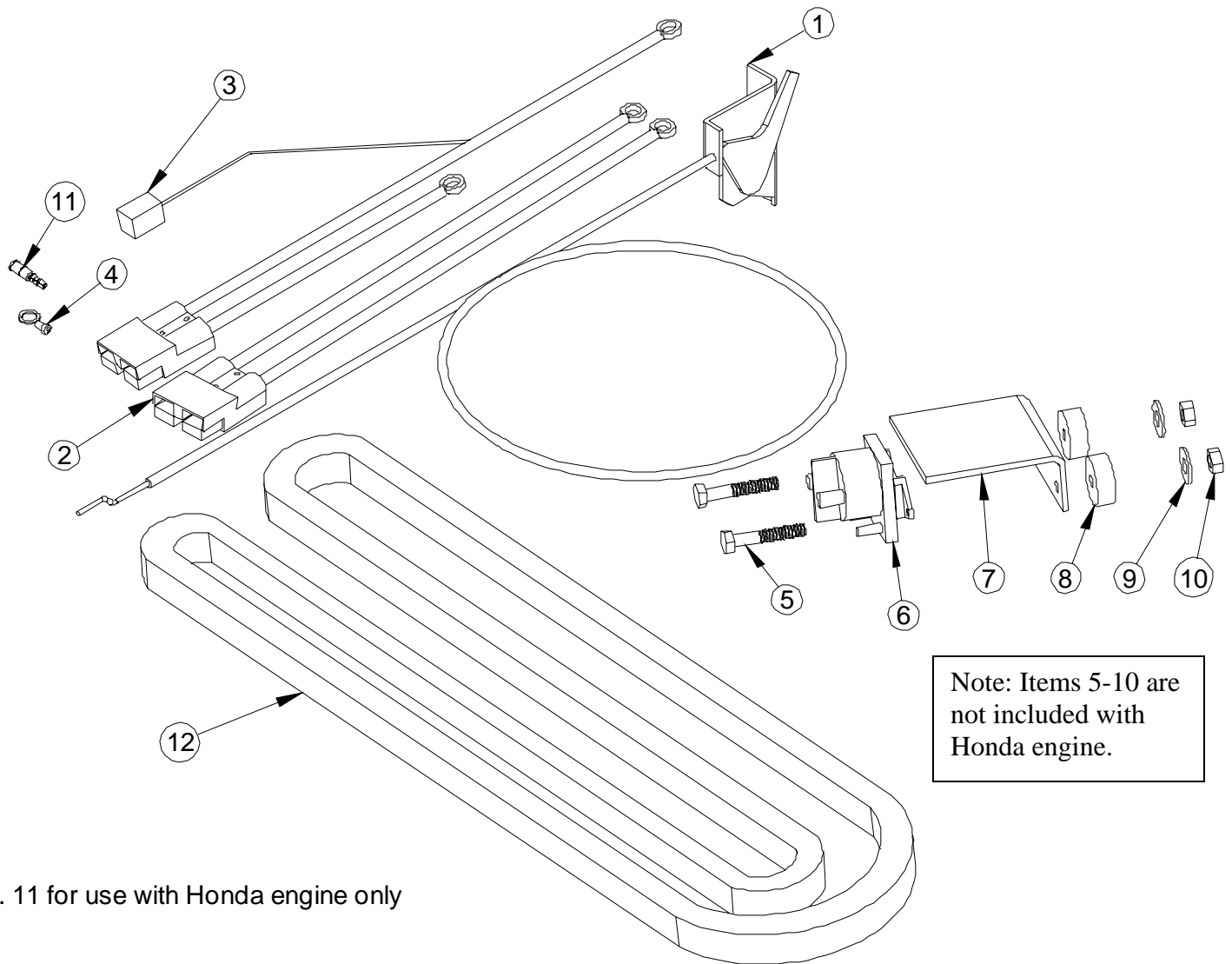
ITEM NO.	QTY.	PART NO.	DESCRIPTION
1	9	PUR1158	5/16" x 1-1/4" Bolt
2	21	PUR1293	5/16" Lock Washer
3	3	PUR1552	Blade Drive Pulley
4	3	PUR1544	Pulley Spacer
5	12	PUR1155	5/16" x 1" Bolt
6	3	PUR1553	Spindle Assembly
7	3	PUR1554	Friction Disc
8	3	PUR1545	Mower Blade
9	3	PUR1225	17/32" Fender Washer
10	3	PUR1288	1/2" Lock Washer
11	3	PUR1228	1/2-20 X 1 HH G5 Bolt



Note: Not all parts used in every application

### Control Panel Assembly Parts List

ITEM NO.	QTY.	PART NO.	DESCRIPTION
1	1	CYC3489	Control Panel Base
2	1	CYC3490	Control Panel Cover
3	2	PUR1130	1/4" x 3/4" Bolt
4	2	CYC5397	Clamp Knob
5	2	PUR1348	1/4" x 20 Nut Retainer
6	2	PUR1412	1/4" x 1-1/16" x 1-5/8" Sq. U-Bolt
7	6	PUR1237	1/4" Flat Washer
8	4	PUR1265	1/4" Nylock Nut
9	2	PUR1293	5/16" Lock Washer
10	2	PUR1315	8 x 50 Metric Bolt
11	2	CYC0848	7/8" U-Clamp Spacer
12	2	PUR1118	1/4" x 1 " Bolt
13	2	PUR1609	Clamp 3/4" Vinyl Coated
14	2	PUR1607	Clamp 13/16" Vinyl Coated
15	1	PUR1600	Ignition Switch
16	2	PUR1392	10 x 1/2" Slotted Tapping Screw
17	2	PUR1063	Clamp Knob Sticker



Note: Items 5-10 are not included with Honda engine.

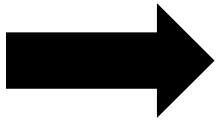
No. 11 for use with Honda engine only

## Wiring & Cable Assembly Parts List

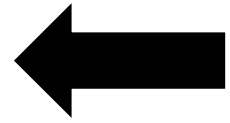
ITEM NO.	QTY.	PART NO.	DESCRIPTION
1	1	PUR1549	Throttle Cable
2	1	PUR1601	ATV Wiring Harness
3	1	PUR1548	LM Wiring Harness
4	1	PUR1374	Ring Terminal 5/16 8Ga.
5	2	PUR1119	1/4" x 1-1/2" Bolt
6	1	PUR1598	Solenoid-Stater Relay
7	1	PUR1550	Solenoid Cover
8	2	PUR1589	1/4" x 1" x 3/8" Rubber Stop
9	2	PUR1237	1/4" Flat Washer
10	2	PUR1265	1/4" Nylock Nut
11	1	PUR1390	Male Bullet Connector
12	1	PUR1546	Dayco V-Belt



Cycle Country Accessories Corporation has been a world-renowned manufacturer of quality ATV products since 1981 and we hope you will enjoy your new Cycle Country accessory.



## Check out our other accessories



### **We're the Industry Snow Blade leader:**

42", 48", 54", 60" & 72" Straight Blades

52" & 60" State Plows

Power 'V' Blade

### **If a winch is what you must have, then you've come to the right place:**

1500lb, 2500lb and 3000lb Winches

We also have an extensive line of winch mounts for both Cycle Country and Warn winches

### **If you need to haul more gear on your quad, check out our baskets:**

Front Basket

Rear Basket

Rear Drop Basket

Rear Drop Basket with Tail Gate

### **If you need to mow the trail before you go riding one of these will help:**

Our 54" finish cut Quick Silver54 can be mounted in front or towed behind your ATV

The 48" Rough Cut will handle your toughest mowing jobs

### **If you are into deer hunting and want to make a food plot, you will love our 3 Point Hitch & Implements:**

Rear Blade

Moldboard Plow

Spreader

Furrower

Rake

Cultivator

Disk Harrow

### **And many more accessories to help you Work Hard and Play Hard:**

For more information call us at 1-800-841-2222, or on the web at [www.cyclecountry.com](http://www.cyclecountry.com)