

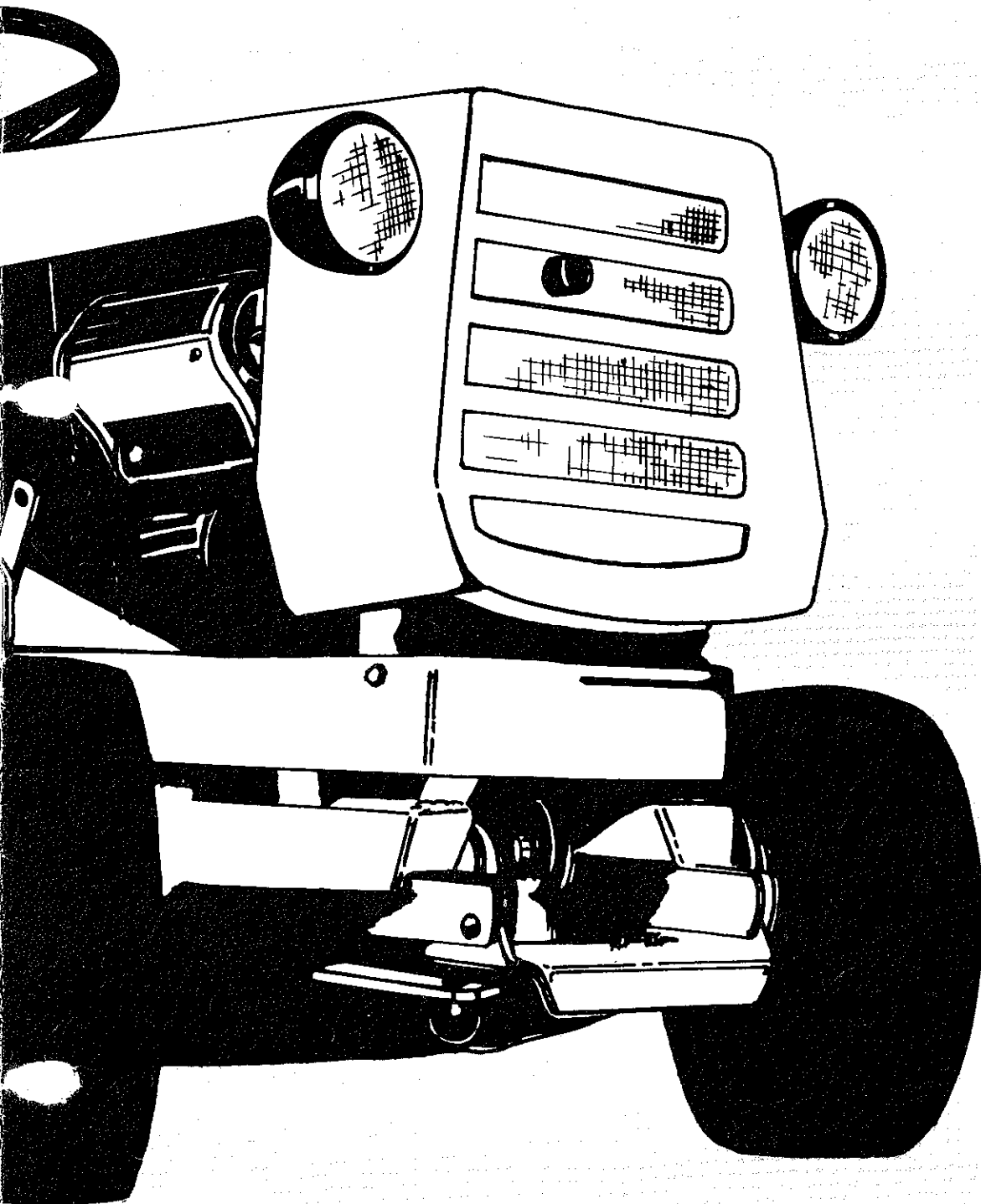
Illustrated Parts List

HOMELITE®

Price .35

Part No. 24639-3

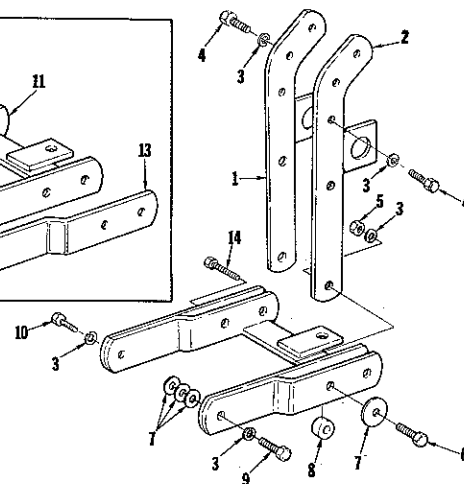
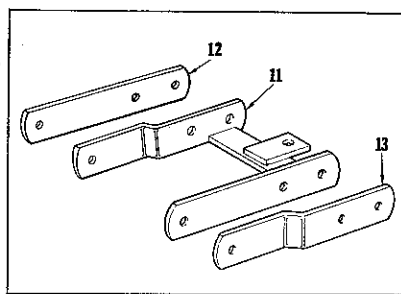
TRACTORS



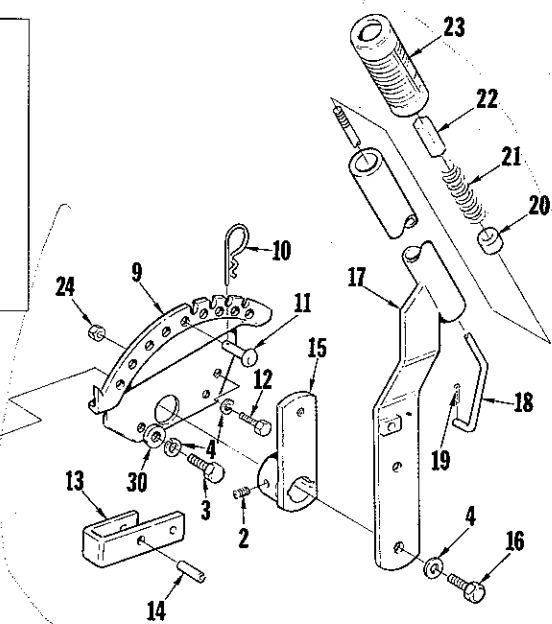
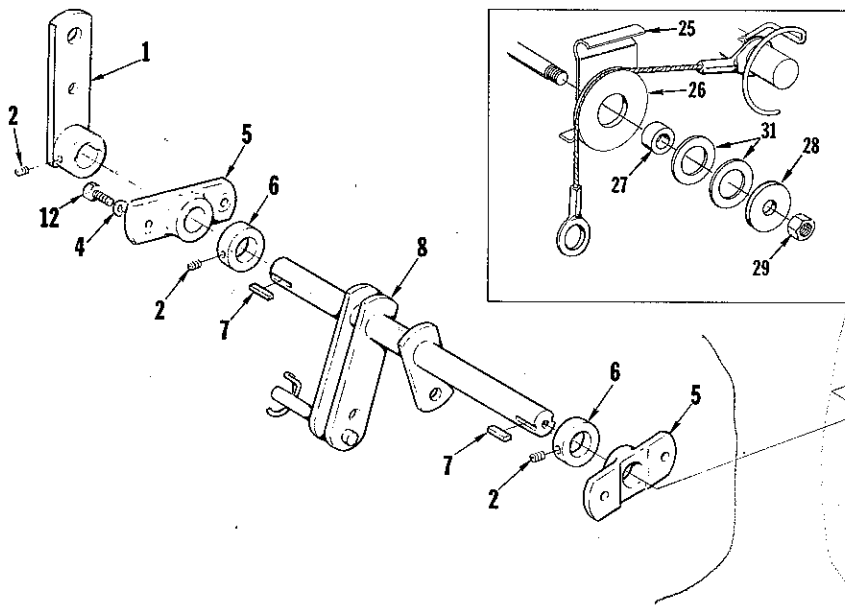
T-10
T-16S
T-16H

Draw Bar Assembly T-10

No.	Description	Part No.	Qty.
1	ARM ASSEMBLY (L. H.)	LM-01643-04	1
2	ARM ASSEMBLY (R. H.)	LM-01642-84	1
3	WASHER-lock	LM-09181-99	8
4	SCREW-hex hd. cap	LM-09182-12	4
5	NUT-hex	LM-09182-13	2
6	SCREW-hex hd. cap, 7/16-14 x 1-3/4	LM-09166-09	1
7	WASHER-flat	LM-09184-30	7
8	SPACER	LM-01660-76	2
9	SCREW-hex hd. cap, 7/16-14 x 1-1/2	LM-09166-08	1
10	SCREW-hex hd. cap, 7/16-14 x 1-1/4	LM-09164-32	1
11	DRAWBAR ASSEMBLY	LM-16066-36	1
12	BAR-pull	LM-01570-91	1
13	BAR-draw	LM-01542-03	1
14	SCREW-hex, 7/16-14 x 2	LM-09174-03	1



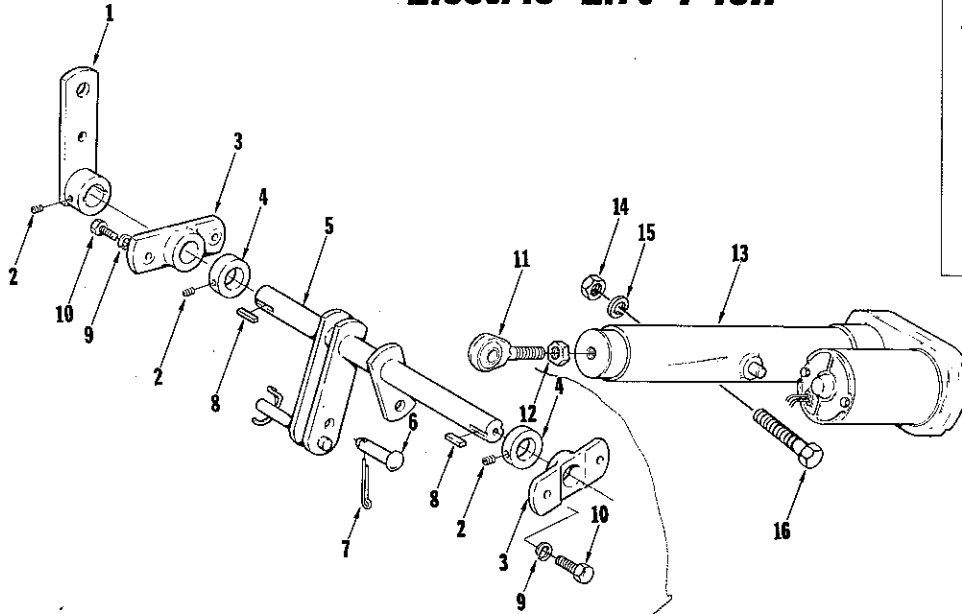
Lift Assembly T-10 & T-16S



No.	Description	Part No.	Qty.	No.	Description	Part No.	Qty.
1	LEVER ASSEMBLY-front lift	LM-01576-25	1	16	SCREW-hex hd. cap, 3/8-16 x 1	LM-09212-10	2
2	SETSCREW-hex soc, 5/16-18 x 5/16	LM-09117-12	4	17	LEVER ASSEMBLY-lift	LM-16065-51	1
3	SCREW-hex hd. cap	LM-09077-31	2	18	ROD-latch lift lever	LM-16065-53	1
4	WASHER-lock	LM-09169-65	7	19	PIN-cotter	LM-09184-47	1
5	BEARING-lift lever	LM-01576-20	2	20	SPACER-handle, lift lever	LM-01542-26	1
6	COLLAR-set	LM-01576-24	2	21	SPRING-stand	LM-01520-06	1
7	KEY-plain parallel	LM-09213-46	4	22	BUTTON-thumb	LM-01542-27	1
8	SHAFT ASSEMBLY-lift	LM-16064-31	1	23	GRIP-lift lever	LM-01562-09	1
* 9	QUADRANT-lift lever	LM-16076-48	1	24	NUT-hex fin, 3/8-16	LM-09169-50	1
10	CLIP-spring	LM-81610-45	1	25	CLIP-cable retaining	LM-16064-30	1
* 11	PIN-lock	LM-16087-02	1	26	PULLEY	LM-01727-25	1
12	SCREW-hex hd. cap	LM-09081-27	3	27	SPACER-pulley	LM-16064-69	1
13	LATCH-lift lever	LM-01730-39	1	28	WASHER-flat, 13/32	LM-09226-11	1
14	PIN-spring	LM-09181-13	1	29	NUT-hex lock, 3/8-16	LM-09234-28	1
15	LIFT LEVER ASSEMBLY-inner sect.	LM-01715-93	1	30	WASHER-flat, 3/8	LM-09173-78	2
				31	WASHER	LM-01084-72	2

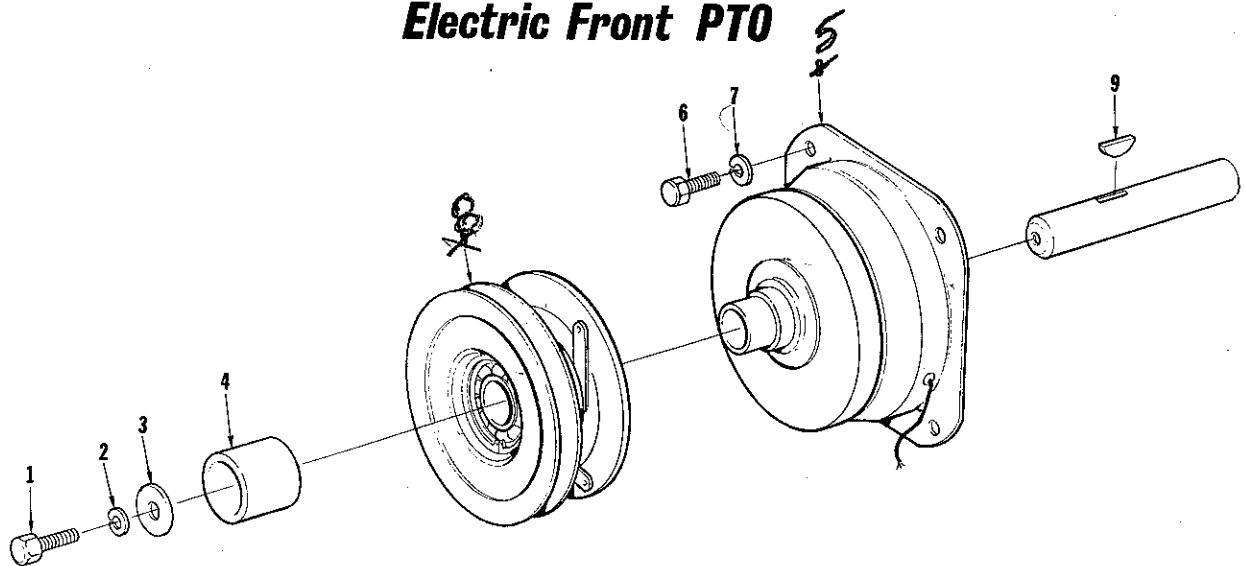
ALWAYS FURNISH MODEL AND SERIAL NUMBER WHEN ORDERING PARTS.

Electric Lift T-16H



No.	Description	Part No.	Qty.	No.	Description	Part No.	Qty.
1	LEVER ASSEMBLY-front lift	LM-01576-25	1	12	NUT-jam, hex, 1/2-20	LM-09192-62	1
2	SCREW-set, 5/16-18 x 5/16	LM-09117-12	3	13	ACTUATOR-electric	LM-16033-34	1
3	BEARING-lift lever	LM-01576-20	2	14	NUT-hex, 5/16-18	LM-09173-72	1
4	COLLAR-set	LM-01576-24	2	15	WASHER-lock, 5/16	LM-09173-56	1
5	SHAFT ASSEMBLY-lift	LM-16064-31	1	16	SCREW-hex cap, 5/16-18 x 3-1/2	LM-09221-03	1
6	PIN	LM-01571-94	1	17	CLIP-cable retaining	LM-16064-30	1
7	PIN-cotter	LM-09184-51	1	18	PULLEY	LM-01727-25	1
8	KEY-parallel	LM-09213-46	2	19	NUT-hex lock, 3/8-16	LM-09234-28	1
9	WASHER-lock, 3/8	LM-09169-65	4	20	WASHER-flat, 13/32	LM-09226-11	1
10	SCREW-hex hd. cap, 3/8-16 x 3/4	LM-09081-27	4	21	SPACER-pulley	LM-16064-69	1
11	EYE BOLT	LM-01572-15	1	22	WASHER-	LM-01034-72	2

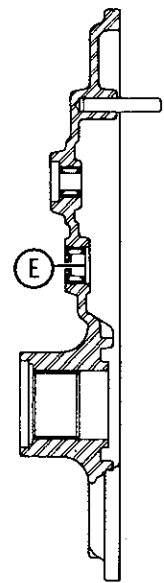
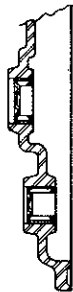
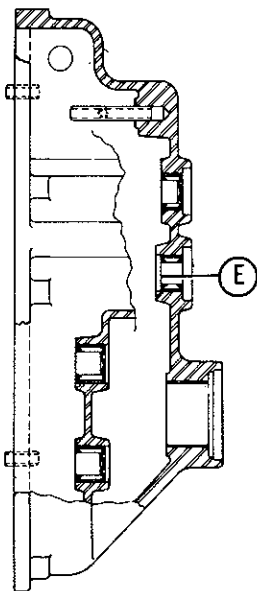
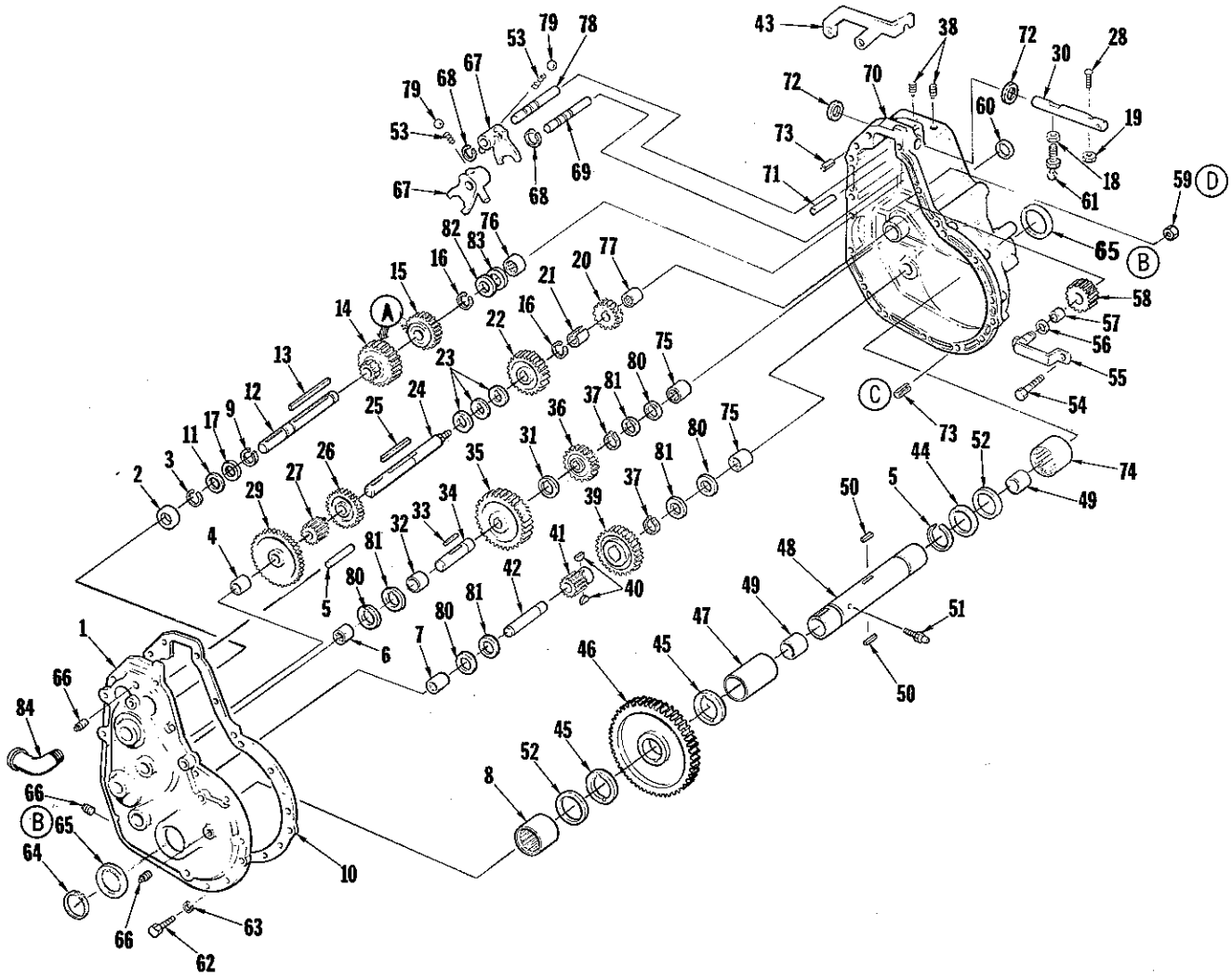
Electric Front PTO



No.	Description	Part No.	Qty.	No.	Description	Part No.	Qty.
1	SCREW-hex hd. cap, 3/8-24 x 1-1/8	LM-09174-07	1	6	SCREW-hex hd. cap, 7/16-14 x 5/8	LM-09287-11	4
2	WASHER-lock, 3/8	LM-09169-65	1	7	WASHER-lock, 7/16	LM-09181-99	4
3	WASHER-flat	LM-09221-92	1	8	HUB ASSEMBLY-PTO clutch	LM-16069-00	1
4	SPACER	LM-16065-10	1	9	KEY-plain parallel, 1/4 x 1/4	LM-09287-12	1
5	COIL ASSEMBLY-PTO clutch	LM-16068-99	1				

ALWAYS FURNISH MODEL AND SERIAL NUMBER WHEN ORDERING PARTS.

Transmission Assembly T-10 & T-16S



- (A) Indicates beveled side of gears.
- (B) Grease inside lips of all seals before installation.
Install all seals with spring toward of case.
- (C) Cover must be seated over dowel pins (c) before cap screws are installed.
- (D) Tighten (59) to 55 ft. lbs. torque
- (E) 1/16" clearance from inside surface, all other bearings have flush fit with inside surface.

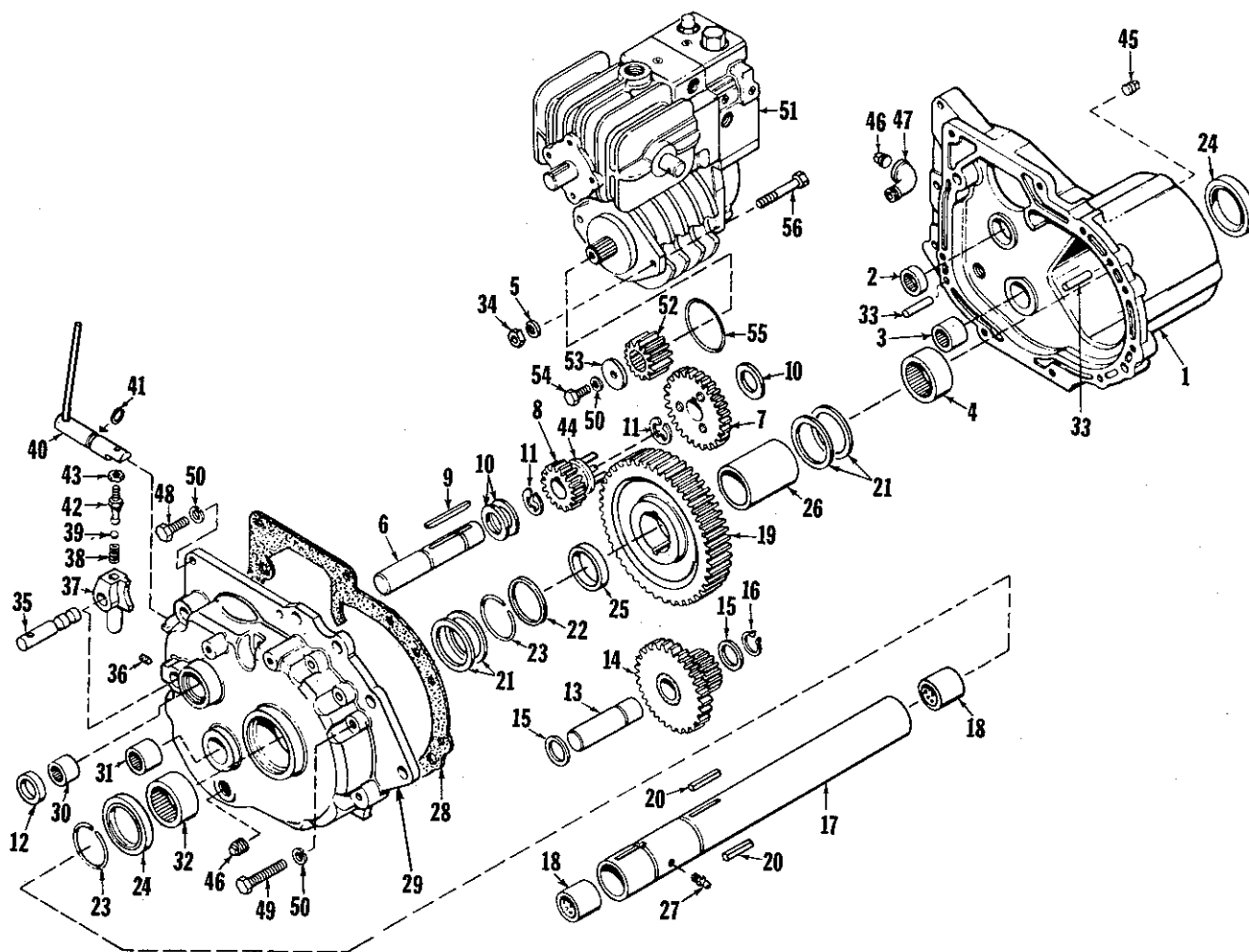
ALWAYS FURNISH MODEL AND SERIAL NUMBER WHEN ORDERING PARTS.

Transmission Assembly T-10 & T-16S

No.	Description	Part No.	T-10		Qty.	No.	Description	Part No.	T-16S		Qty.
			T-10	T-16S					T-10	T-16S	
*	TRANSMISSION ASSEMBLY	LM-16082-85	x		1	44	WASHER	LM-01540-97	x	x	1
*	TRANSMISSION ASSEMBLY	LM-16082-84		x	1	45	WASHER-axle tube	LM-01541-30	x	x	2
1	COVER-gear case sub assembly	LM-01642-26	x	x	1	46	GEAR-drive	LM-01540-95	x	x	1
	Includes:					47	SPACER-axle tube	LM-01540-98	x	x	1
2	BEARING	LM-01082-02	x	x	1	48	TUBE & BUSHING ASSEMBLY	LM-01642-22	x	x	1
3	RING-retaining	LM-01640-64	x	x	1	49	Includes: BUSHING	LM-01642-24	x	x	1
4	BEARING-needle	LM-01542-57	x	x	1	50	KEY	LM-01540-96	x	x	2
5	ROLL PIN ASSEMBLY	LM-01545-37	x	x	1	51	FITTING-tube	LM-09128-08	x	x	1
6	BEARING-needle	LM-01542-71	x	x	1	*52	WASHER	LM-01729-77	x	x	2
7	BEARING-needle	LM-01542-59	x	x	1	53	SPRING	LM-01543-23	x	x	2
8	BEARING-needle	LM-01575-20	x	x	1	54	SCREW-hex hd. cap, 3/8-16 x 1-1/4	LM-09174-00	x		1
9	RING-retaining	LM-01181-34	x	x	1	55	PIN ASSEMBLY-rev. gear	LM-01543-52	x		1
10	GASKET-gear case	LM-01642-34	x	x	1	56	WASHER	LM-01543-25	x		1
11	WASHER	LM-01084-72	x	x	1	57	SPACER-rev. gear	LM-01540-84	x		1
*12	SHAFT-pulley	LM-01743-38	x		1	58	GEAR-reverse	LM-01540-87	x		1
*	SHAFT-pulley	LM-01738-07	x		1	59	NUT-hex lock fin.	LM-09180-16	x		1
13	KEY	LM-01642-94	x	x	1	60	SEAL-oil	LM-01542-63	x	x	1
14	PINION ASSEMBLY	LM-01540-75	x	x	1	61	STEM-shift	LM-01542-61	x	x	1
*	GEAR-2nd & 4th	LM-01742-34	x		1	62	SCREW-hex hd. cap, 5/16-18 x 1	LM-09164-31	x	x	14
15	PINION ASSEMBLY-Rev. & II	LM-01540-72	x		1	63	WASHER-lock, 5/16	LM-09173-56	x	x	14
16	RING-retaining	LM-01542-64	x	x	2	64	RING-snap	LM-01542-68	x	x	2
17	WASHER	LM-01544-62	x	x	1	65	SEAL	LM-01542-69	x	x	2
*18	NUT-full, 3/8-24	LM-09221-32	x	x	1	66	PLUG-pipe	LM-09016-53	x	x	3
19	NUT-hex jam fin, 5/16-18	LM-09201-61	x	x	1	67	FORK-shift	LM-01540-69	x	x	2
*20	PINION-Rev. & IV	LM-01742-28	x	x	1	68	RING-retaining	LM-80610-48	x	x	2
21	SPACER	LM-01540-82	x	x	1	69	SHAFT-shifter, HI-Lo	LM-01540-68	x	x	1
22	GEAR-driven II	LM-01540-81	x	x	1	70	CASE-gear sub assembly	LM-01575-16	x		1
23	SPACER-transmission gear	LM-80610-12	x	x	3	*	CASE-gear sub assembly	LM-01745-82	x		1
24	SHAFT-1st Intm.	LM-01572-90	x	x	1		Includes:				
25	KEY	LM-01543-54	x	x	1		SPACER (not shown)	LM-01210-84	x		2
26	PINION-driven III	LM-01540-80	x	x	1	71	ROLL PIN SUB ASSEMBLY	LM-01545-38	x	x	1
27	PINION-1st Intm.	LM-01540-79	x	x	1	*	PLUG-expansion (not shown)	LM-01745-83	x		1
*28	BOLT-rd. hd., 5/16-18 x 1	LM-01722-41	x	x	1	72	SEAL-oil	LM-01576-19	x	x	2
29	GEAR-driven 1st	LM-01540-78	x	x	1		SCREW-set (not shown)	LM-09028-70	x		1
30	ROD-shift	LM-01642-50	x	x	1	73	PIN-roll	LM-09181-13	x	x	2
31	WASHER	LM-01540-38	x	x	1	74	BEARING-needle	LM-01575-19	x	x	1
32	SPACER	LM-01540-90	x	x	1	75	BEARING-needle	LM-01542-59	x		2
33	KEY	LM-01542-67	x	x	1		BEARING-needle	LM-01542-59	x		1
34	SHAFT-2nd. intermediate	LM-01540-86	x	x	1	76	BEARING-needle	LM-01542-57	x	x	1
35	GEAR-2nd. intermediate	LM-01540-89	x	x	1	77	BEARING-needle	LM-01542-58	x	x	1
36	PINION-2nd. intermediate	LM-01640-62	x	x	1	78	SHAFT-shifter rev. med.	LM-01540-67	x	x	1
37	RING-retaining	LM-01542-66	x	x	2	79	BALL-shift lock	LM-01542-62	x	x	2
38	SCREW-set soc. hd., 5/16-18 x 1/2	LM-09172-31	x	x	2	*80	WASHER	LM-01729-79	x	x	4
39	GEAR-3rd. intermediate	LM-01640-51	x	x	1	*81	WASHER	LM-01729-78	x		3
40	KEY-Woodruff #6	LM-09102-24	x	x	2		WASHER	LM-01729-78	x		4
41	PINION-3rd. intermediate	LM-01540-92	x	x	1	*82	WASHER	LM-01729-82	x	x	1
42	SHAFT-3rd. intermediate	LM-01540-91	x	x	1	*83	WASHER	LM-01729-81	x	x	1
43	SUPPORT-switch	LM-01642-51	x	x	1	84	ELBOW-street	LM-09017-23	x		1

* Denotes new parts

Transmission Assembly T-16H

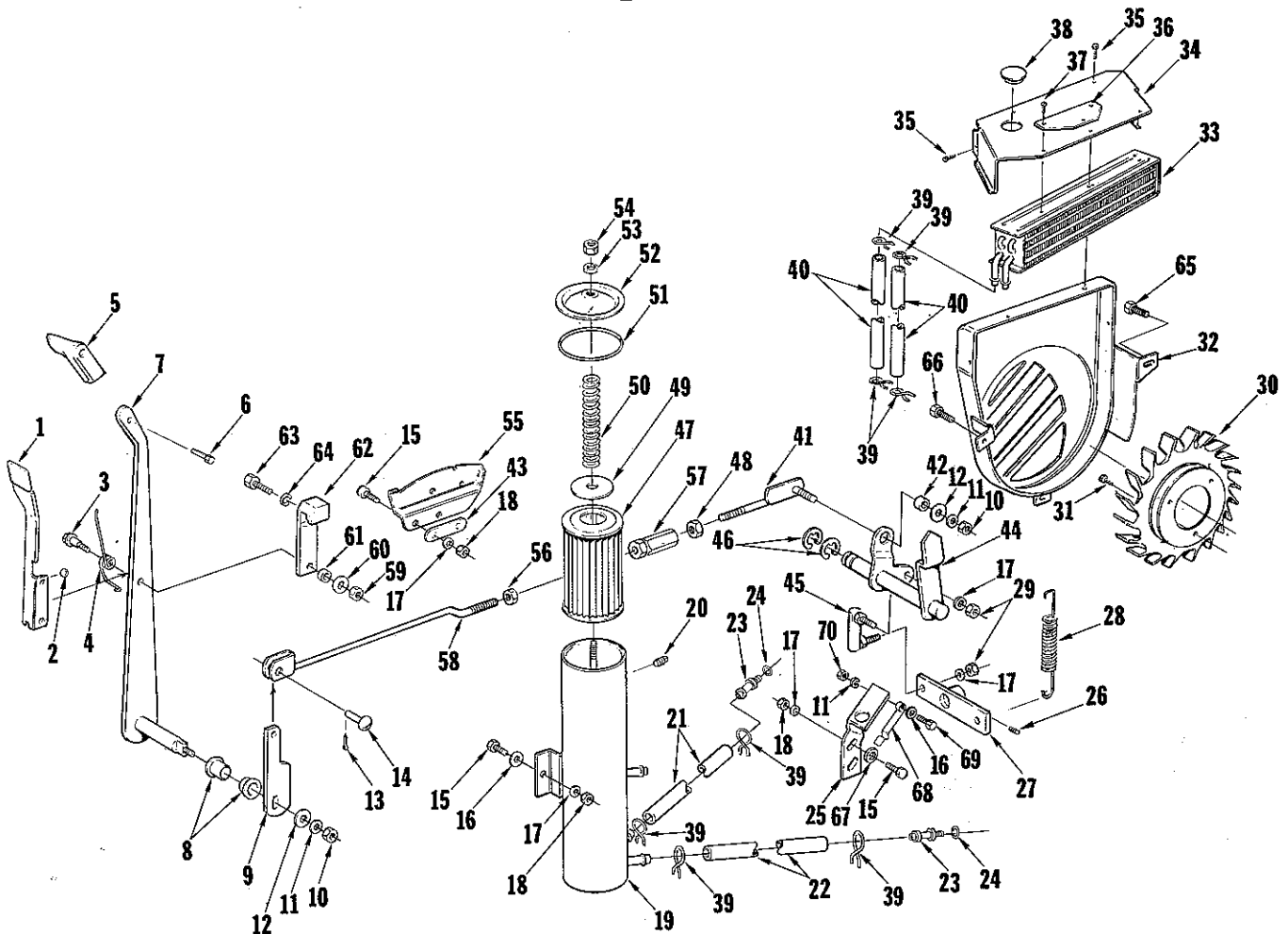


No.	Description	Part No.	Qty.	No.	Description	Part No.	Qty.
1	GEAR CASE	LM-01661-05	1	31	BEARING-needle	LM-01660-18	1
	Includes:			32	BEARING-needle	LM-01575-19	1
2	BEARING-needle	LM-01542-71	1	33	PIN-roll, 3/8 x 1	LM-09183-90	2
3	BEARING-needle	LM-01660-18	1	34	NUT-full hex, 7/16-14	LM-09182-13	2
4	BEARING-needle	LM-01575-19	1	*35	SHAFT-shifter	LM-01762-39	1
5	WASHER-lock, 7/16	LM-09191-99	2	36	SCREW-cone pt, hollow hd. 5/16-18 x 1/2		
* 6	BRAKE SHAFT	LM-01762-46	1	*37	FORK-shift	LM-01762-34	1
* 7	GEAR-1st. Interm.	LM-01762-45	1	38	SPRING	LM-01543-23	1
* 8	PINION-1st. Interm.	LM-01762-43	1	39	BALL-shift lock	LM-01542-62	1
* 9	KEY	LM-01762-44	1	*40	SHIFT SHAFT ASSEMBLY	LM-01762-38	1
10	WASHER	LM-01660-13	3	41	"O" RING	LM-09235-48	1
*11	RING-retainer	LM-01769-80	2	42	STEM-shift	LM-01660-29	1
12	SEAL-oil	LM-01660-21	1	43	NUT-hex jam, 5/16-24	LM-09204-38	1
13	SHAFT-Interm.	LM-01660-12	1	*44	FLANGE-drive	LM-01762-42	1
*14	PINION & GEAR ASSEMBLY	LM-01762-36	1	45	PLUG-pipe, 1/4	LM-09016-52	1
15	WASHER	LM-01660-16	2	46	PLUG-pipe	LM-09016-53	2
16	RING-retaining	LM-01660-17	1	47	ELBOW-street, 3/8	LM-09017-23	1
17	AXLE TUBE ASSEMBLY	LM-01660-66	1	48	SCREW-hex cap, 5/16-18 x 1	LM-09164-31	5
18	Includes: BUSHING	LM-01642-24	2	49	SCREW-hex cap, 5/16-18 x 2	LM-09193-54	4
19	GEAR-drive	LM-01660-06	1	50	WASHER-lock, 5/16	LM-09173-56	10
20	KEY	LM-01540-96	2	51	PUMP & MOTOR UNIT-hydrostatic	LM-01660-97	1
21	WASHER	LM-01540-97	4	52	PINION-motor shaft	LM-01660-03	1
22	WASHER	LM-01661-67	1	53	WASHER	LM-01231-44	1
23	RING-snap	LM-01542-68	2	54	SCREW-hex cap, 5/16-24 x 5/8	LM-09219-80	1
24	SEAL	LM-01542-69	2	55	"O"RING	LM-01660-26	1
25	SPACER-side (R. H.)	LM-01660-40	1	56	SCREW-hex cap, 7/16-14 x 4	LM-01762-42	1
26	SPACER-side (L. H.)	LM-01660-41	1				
27	FITTING-grease	LM-09128-08	1				
28	GASKET-gear case	LM-01660-43	1				
29	COVER-gear case sub assembly	LM-01661-03	1				
	Includes:						
30	BEARING-needle	LM-01660-19	1				

* Denotes new parts

ALWAYS FURNISH MODEL AND SERIAL NUMBER WHEN ORDERING PARTS.

Hydrostatic Cooling & Controls T-16H

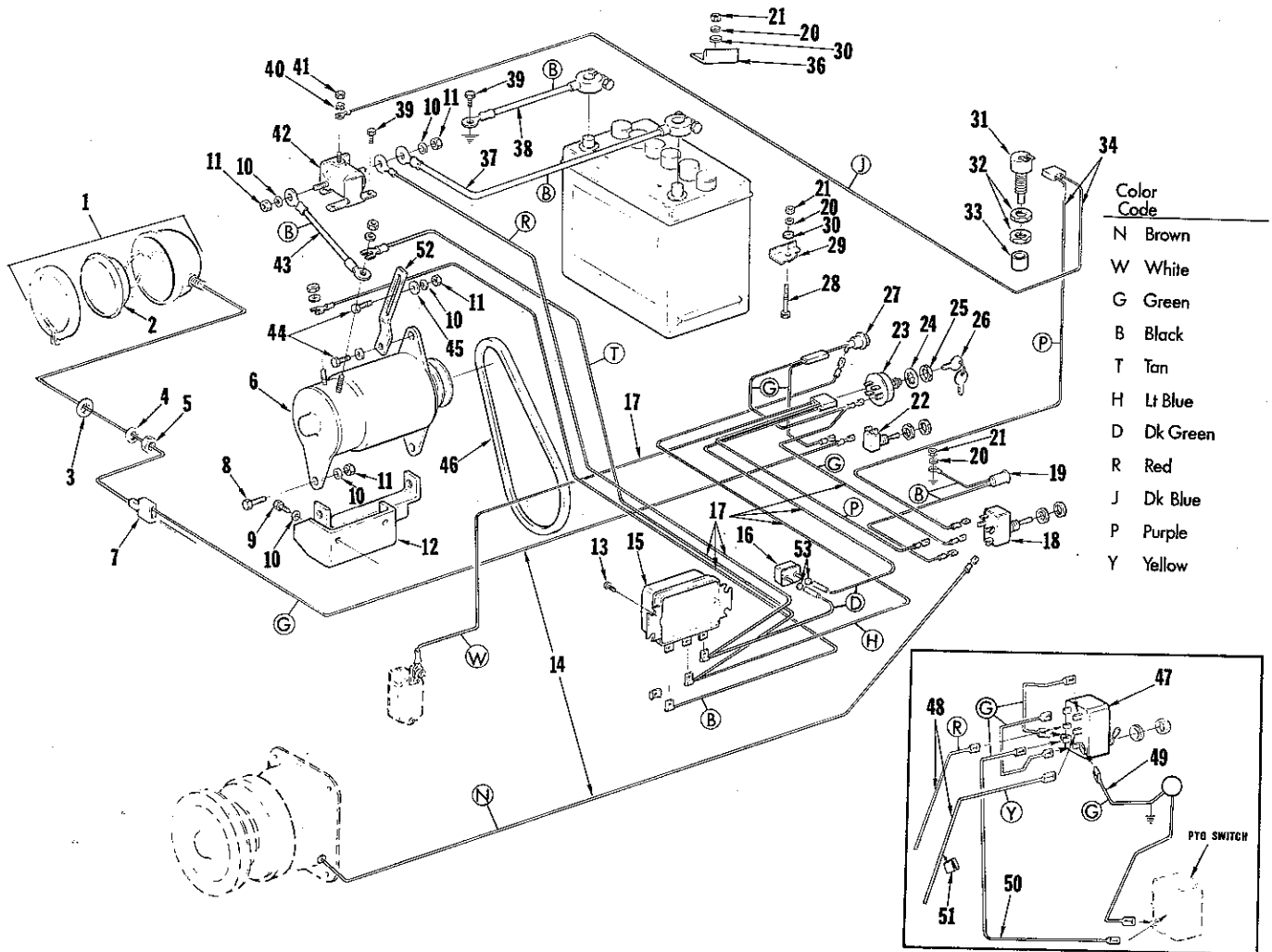


No.	Description	Part No.	Qty.	No.	Description	Part No.	Qty.
1	HANDLE-trip	LM-01717-79	1	36	CLIP-spring	LM-01661-60	1
2	BALL-shift handle	LM-01661-78	1	37	SCREW-rd hd., 10-32 x 1/2	LM-09174-52	3
3	BOLT-shoulder	LM-01660-51	1	38	CAPPLUG	LM-01661-65	1
4	SPRING	LM-01660-47	1	39	CLAMP-hose	LM-01660-44	8
5	HANDLE	LM-01711-65	1	40	HOSE-hydraulic	LM-01661-38	2
6	SCREW-thread cutting, 1/4-20 x 7/8	LM-09221-25	1	41	ROD ASSEMBLY-speed control	LM-01660-89	1
7	LEVER ASSEMBLY-speed control	LM-01710-72	1	42	SPACER	LM-01660-78	1
8	BUSHING-flanged	LM-16104-56	2	43	SPACER-speed control quadrant	LM-16074-15	1
9	LINK-speed control	LM-16065-48	1	44	SHAFT ASSEMBLY-control	LM-01660-95	1
10	NUT-hex fin, 3/8	LM-09169-50	2	45	JOINT-ball (double end)	LM-01660-79	1
11	WASHER-lock, 3/8	LM-09169-65	3	46	"E" RING	LM-16021-55	2
12	WASHER-3/8	LM-09173-78	2	47	ELEMENT-filter	LM-01661-47	1
13	PIN-cotter	LM-09184-47	1	48	NUT-hex, 7/16-14 (L. H. thread)	LM-09254-76	1
*14	PIN	LM-16087-02	1	49	WASHER	LM-01661-50	1
15	SCREW-hex hd. cap, 5/16-18 x 3/4	LM-09173-97	6	50	SPRING	LM-01661-71	1
16	WASHER-flat, 5/16	LM-09176-42	5	51	"O" RING	LM-01660-20	1
17	WASHER-lock, 5/16	LM-09173-56	9	52	COVER-reservoir	LM-01660-80	1
18	NUT-hex fin, 5/16-18	LM-09173-72	7	53	WASHER-nylon	LM-01661-61	1
19	RESERVOIR ASSEMBLY	LM-01661-40	1	54	NUT-lock, 5/16-18 (ESNA)	LM-09244-33	1
20	PLUG-plastic	LM-16035-49	1	55	QUADRANT-speed control	LM-01714-29	1
21	HOSE-hydraulic	LM-01661-36	1	56	NUT-hex fin, 7/16-14 (R. H.)	LM-09182-13	1
22	HOSE-hydraulic	LM-01661-37	1	57	TURNBUCKLE	LM-01660-88	1
23	INSERT-beaded	LM-01661-39	2	58	ROD ASSEMBLY-speed control (front)	LM-01660-83	1
24	"O" RING	LM-01660-24	2	59	NUT-hex lock, 1/4-20	LM-09233-58	1
*25	SUPPORT-switch	LM-16085-21	1	60	WASHER-standard, 1/4	LM-09173-77	1
26	PIN-spring	LM-09169-37	1	61	SPACER	LM-01660-63	1
27	LINK ASSEMBLY-control	LM-01660-92	1	62	CLAMP-stop	LM-01714-32	1
28	SPRING	LM-01071-35	1	63	SCREW-hex hd. cap, 1/4-20 x 1/2	LM-09082-95	1
29	NUT-hex fin, 5/16-24	LM-09202-63	2	64	WASHER-lock, reg., 1/4	LM-09169-64	1
30	FAN-pulley	LM-01660-22	1	65	SCREW-hex cap, 5/16-18 x 7/8	LM-09193-19	1
31	SCREW-hex washer hd., 1/4-20 x 1/2	LM-09250-03	3	66	SCREW-self-tapping hex, 5/16 x 5/8	LM-09228-54	1
32	SHROUD ASSEMBLY-fan	LM-01661-14	1	67	WASHER-flat, 7/16	LM-09184-30	2
33	COOLER-oil	LM-01661-35	1	*68	CLIP-switch	LM-16085-22	1
34	DEFLECTOR-cooler	LM-01661-34	1	*69	BOLT-shoulder	LM-16080-80	1
35	SCREW-self-tapping hex, 10 x 3/8	LM-09237-35	4	70	NUT-jam, 3/8-16	LM-09174-21	1

* Denotes new parts

ALWAYS FURNISH MODEL AND SERIAL NUMBER WHEN ORDERING PARTS.

Electrical T-10, T-16S & T-16H

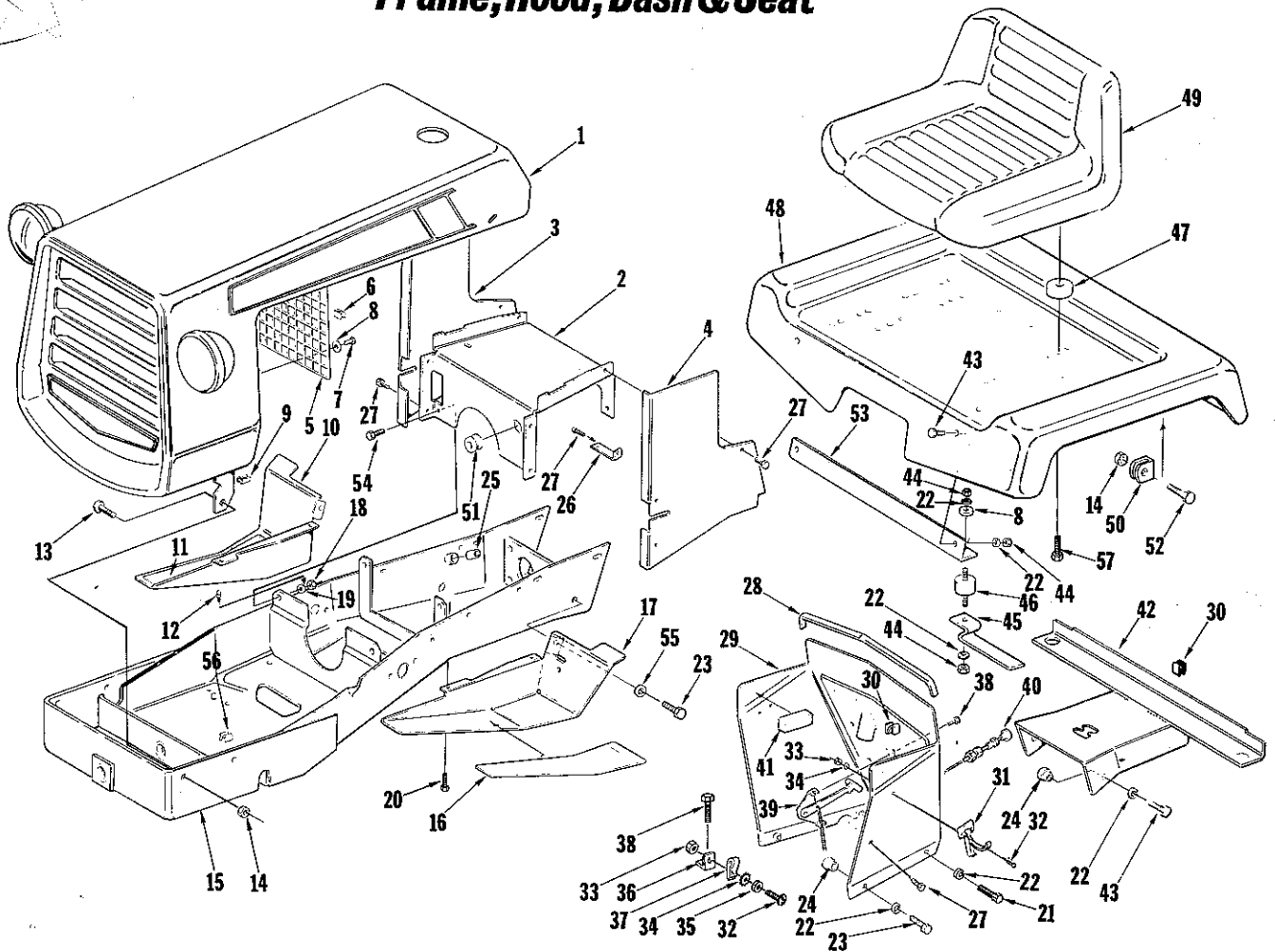


No.	Description	Part No.	Qty.	No.	Description	Part No.	Qty.
1	LAMP ASSEMBLY	LM-01221-75	2	29	CLAMP-battery (L. H.)	LM-16073-43	1
2	Includes: BULB	LM-01221-64	2	30	WASHER-1/4	LM-09173-77	2
3	WASHER-flat, 7/16	LM-09184-30	6	31	SWITCH-safety	LM-01222-33	1
4	WASHER-lock, 1/2	LM-09169-66	2		Includes:		
5	NUT-hex fin, 1/2-13	LM-09169-51	2	32	NUT-hex special	LM-01222-34	1
6	MOTOR-generator	LM-01222-36	1	33	BOOT-rubber	LM-16044-40	1
7	CONNECTOR-insulated	LM-01221-82	1	34	WIRE ASSEMBLY-switch	LM-16067-65	1
8	SCREW-hex hd. cap, 5/16-18 x 1-1/4	LM-09077-29	2	35	BATTERY	LM-16073-60	1
9	SCREW-hex hd. cap, 5/16-18 x 3/4	LM-09173-97	2		Includes: LABEL (not shown)	LM-16073-57	1
10	WASHER-lock, reg, 5/16	LM-09173-56	8	36	CLAMP-battery (R. H.)	LM-16073-42	1
11	NUT-hex fin, 5/16-18	LM-09173-72	5	37	CABLE-battery to solenoid	LM-16012-43	1
12	SUPPORT ASSEMBLY-generator	LM-16063-67	1	38	CABLE-battery to ground	LM-01718-11	1
13	SCREW-tapping (Tap-tite) 1/4-20 x 5/8	LM-09274-29	3	39	SCREW-Tap-tite, 1/4-20 x 1/2	LM-09250-03	2
14	HARNES ASSEMBLY-light & PTO	LM-16067-66	1	40	WASHER-lock, ext. tooth #10	LM-09227-11	1
15	REGULATOR-voltage	LM-01221-93	1	41	NUT-mach. screw hex, 10-32	LM-09174-15	1
16	BREAKER-circuit	LM-01721-63	1	42	SOLENOID	LM-01222-16	1
17	HARNES ASSEMBLY-wiring	LM-16067-64	1	43	CABLE-generator to solenoid	LM-16036-18	1
18	SWITCH TOGGLE-PTO	LM-16072-42	1	44	SCREW-hex hd. cap, 5/16-18 x 3/4	LM-09213-32	2
19	LIGHT-pilot	LM-16072-44	1	45	WASHER-5/16	LM-09176-42	1
20	WASHER-lock, 1/4	LM-09169-64	3	46	BELT-generator	LM-16073-23	1
21	NUT-hex, 1/4-20	LM-09166-22	3	47	SWITCH-toggle (actuator) T-16H only	LM-16072-43	1
22	SWITCH-light toggle	LM-01221-84	1	48	HARNES-switch to actuator (T-16H only)	LM-16067-69	1
23	SWITCH-key	LM-01222-01	1	49	LEAD-switch to ground (T-16H only)	LM-16073-72	1
	Includes:			50	LEAD-switch to PTO switch (T-16H only)	LM-16067-68	1
24	WASHER	LM-09286-36	1	51	CLIP-speed (T-16H only)	LM-01650-73	1
25	NUT-hex	LM-01222-35	1	52	ARM-belt tightener	LM-01571-02	1
26	KEY-set (ignition)	LM-16032-49	1	53	WASHER-insulation	LM-16076-08	2
27	INDICATOR-lamp assembly	LM-01712-95	1				
28	SCREW-hex hd. cap, 1/4-20 x 2	LM-09199-29	2				

* Denotes new parts

ALWAYS FURNISH MODEL AND SERIAL NUMBER WHEN ORDERING PARTS.

Frame, Hood, Dash & Seat

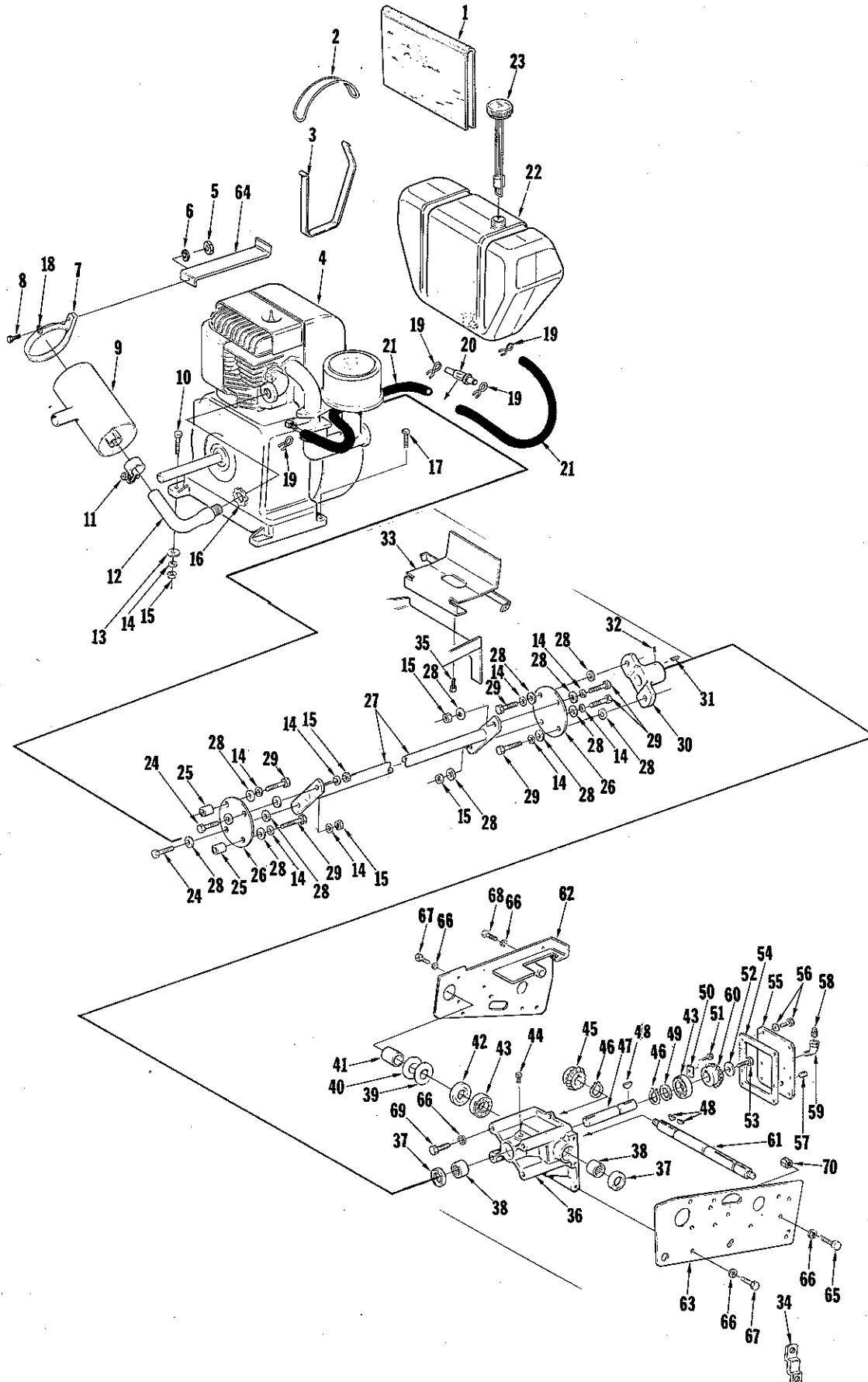


No.	Description	Part No.	Qty.	No.	Description	Part No.	Qty.
1	HOOD ASSEMBLY	LM-16063-79	1	30	CLIP-cable	LM-01724-34	2
*2	SUPPORT ASSEMBLY-battery	LM-16081-06	1	31	LATCH-hood	LM-16032-78	2
3	PANEL-side (R. H.)	LM-16064-48	1	32	SCREW-rd. hd., 10-24 x 3/8	LM-09160-79	5
4	PANEL-side (L. H.)	LM-16064-47	1	33	NUT-hex, 10-24	LM-09166-21	5
5	SCREEN-grille	LM-16071-83	1	34	WASHER-lock #10, ext. tooth	LM-09227-11	5
6	SPEED-clip	LM-01650-74	7	35	WASHER-#10	LM-09232-12	1
7	RIVET-pop	LM-16045-56	4	36	BRACKET-throttle cable	LM-01573-15	1
8	WASHER-1/4	LM-09173-77	6	37	CLIP-throttle cable	LM-16031-04	1
9	SPEED CLIP	LM-16044-51	1	38	SCREW-tapping, 1/4-20 x 5/8 (Taptite)	LM-09274-29	3
10	FOOT REST (R. H.)	LM-16064-09	1	39	THROTTLE	LM-16066-89	1
11	PAD-foot (R. H.)	LM-16066-77	1	40	CHOKE (includes nut & washer)	LM-01713-34	1
12	FITTING-lube (drive type)	LM-09211-33	1	41	GASKET-felt	LM-01065-82	8
13	BOLT-carriage, 3/8-16 x 3/4	LM-09221-10	2	42	COVER ASSEMBLY-frame	LM-16064-61	1
14	NUT-hex lock, 3/8-16	LM-09234-28	4	43	SCREW-hex hd. cap, 5/16-18 x 5/8	LM-09193-18	6
*15	FRAME ASSEMBLY	LM-16081-08	1	44	NUT-hex, 5/16-18	LM-09173-72	10
16	PAD-foot (L. H.)	LM-16066-78	1	45	CLIP-spring	LM-16068-23	2
17	FOOT REST (L. H.)	LM-16064-08	1	46	CONNECTOR-cushion	LM-01570-94	2
18	NUT-hex hd., 3/8-16	LM-09169-50	4	*47	CONNECTOR-cushion	LM-16085-35	4
19	WASHER-lock, 3/8	LM-09169-65	4	48	DECK ASSEMBLY-seat	LM-01661-11	1
20	SCREW-Taptite, 3/8-16 x 3/4	LM-09236-83	4	*49	SEAT	LM-16079-86	1
21	SCREW-hex hd. cap, 5/16-18 x 3/4	LM-09173-97	2	50	STOP-seat deck	LM-16078-70	2
22	WASHER-lock, 5/16	LM-09173-56	12	51	GROMMET (T-10, T-16S)	LM-16021-02	1
23	SCREW-hex hd. Taptite, 3/8-16 x 1/2	LM-09248-56	4		GROMMET (T-16H only)	LM-16021-02	2
24	NUT-retainer, 5/16-18	LM-09228-58	6	52	SCREW-hex hd. cap, 3/8-16 x 1-1/4	LM-09174-00	2
25	BEARING-sleeve	LM-16064-45	2	53	BRACKET-front seat deck	LM-01640-29	1
26	CLIP-closed (furn. open)	LM-09253-07	1	54	SCREW-hex cap, 3/8-16 x 3/4	LM-09031-27	4
	CLIP-closed (T-16H)	LM-09253-07	2	55	WASHER-flat, 13/32	LM-09227-55	2
27	SCREW-Taptite, 1/4-20 x 1/2	LM-09250-03	9	56	CLIP-cable	LM-01724-36	1
28	MOULDING-dash	LM-16066-16	1	57	SCREW-cap, 5/16-18 x 1	LM-09213-33	4
*29	PANEL ASSEMBLY-instrument	LM-16080-83	1				

* Denotes new parts

ALWAYS FURNISH MODEL AND SERIAL NUMBER WHEN ORDERING PARTS.

Engine, Drive Shaft & Bevel Gear Box



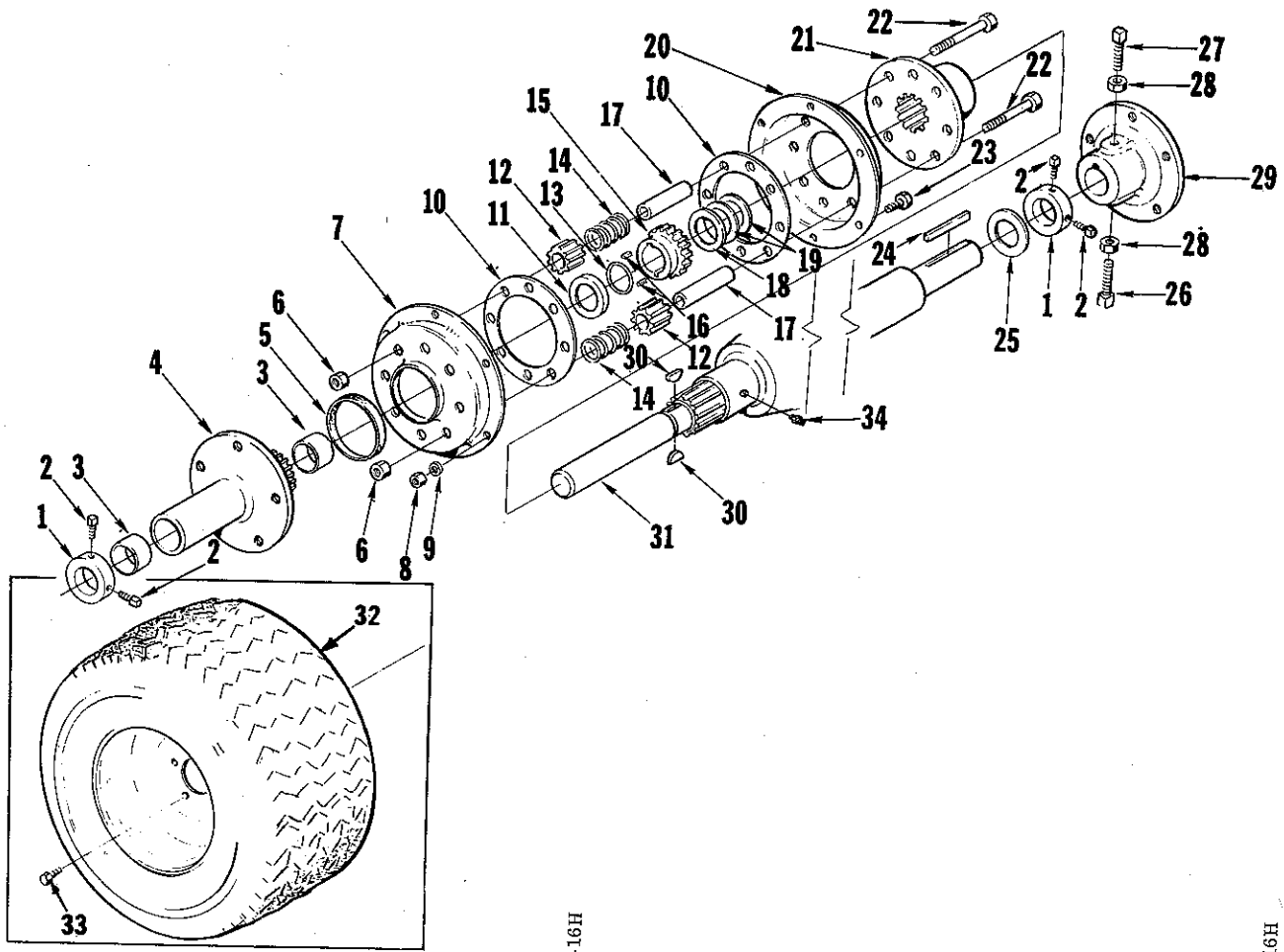
ALWAYS FURNISH MODEL AND SERIAL NUMBER WHEN ORDERING PARTS.

Engine, Drive Shaft & Bevel Gear Box

No.	Description	Part No.	Qty.	No.	Description	Part No.	Qty.
1	INSULATION-fuel tank	LM-01221-43	1	40	SHIM use as req'd	LM-01717-90	5
2	STRAP-fuel tank (upper)	LM-01727-44	2	41	SPACER	LM-01717-92	1
3	STRAP-fuel tank	LM-16066-55	2	42	SEAL-oil	LM-01717-87	1
4	ENGINE-T-10 HP (Model 243431, type 0665-01)		1	43	BEARING-ball	LM-01722-56	2
	ENGINE-T-16 HP (Model 326431, type 0133-01)		1	44	PLUG-pipe	LM-01543-26	1
5	NUT-hex, 5/16-18	LM-09173-72	1	45	GEAR-bevel driven	LM-01717-96	1
6	WASHER-lock, 5/16	LM-09173-56	2	46	RING-retaining	LM-01722-06	2
7	STRAP-muffler	LM-01718-80	1	47	SHAFT-driven	LM-01739-66	1
8	SCREW-hex hd. cap, 5/16-18 x 1	LM-09164-31	1	48	KEY-#9	LM-09051-23	3
9	MUFFLER-exhaust	LM-16064-12	1	49	WASHER	LM-01727-53	1
10	SCREW-hex hd. cap, 3/8-16 x 1-1/2	LM-09193-60	3	50	PLATE-bearing clamp	LM-01540-40	1
11	CLAMP-muffler w/fasteners	LM-01720-61	1	51	SCREW-cap	LM-09193-18	1
12	ELBOW & NIPPLE ASSEMBLY	LM-01721-95	1	52	WASHER	LM-01540-26	1
13	WASHER-3/8	LM-09173-78	4	53	SCREW-hex hd. cap, 5/16-18 x 3/4	LM-01542-81	1
14	WASHER-lock, 3/8	LM-09169-65	12	54	GASKET	LM-01542-82	1
15	NUT-hex fin, 3/8-16	LM-09169-50	8	55	COVER-housing	LM-01642-49	1
16	NUT-lock	LM-01543-78	1	56	SCREW-capw/int. tooth washer 1/4-20 x 5/8	LM-16040-97	6
17	SCREW-rect. hd., 3/8-16 x 1-5/16	LM-01724-55	1	57	PLUG-pipe, 1/4	LM-09016-52	1
18	WASHER-flat, 11/32"	LM-09193-81	1	58	PLUG-pipe, 3/8	LM-09016-53	1
19	CLAMP-hose	LM-01543-72	4	59	ELBOW-street, 3/8 x 90°	LM-09017-23	1
20	FILTER-fuel	LM-01732-06	1	60	GEAR-bevel driver	LM-01727-52	1
*21	HOSE-fuel 11"	LM-16081-93	2	*61	SHAFT-driver	LM-01727-50	1
22	TANK-fuel	LM-16066-53	1	*62	PLATE-side R. H. (T-16S)	LM-01738-59	1
23	CAP-fuel tank w/gauge	LM-16027-24	1		PLATE-side, R. H. (T-10 only)	LM-16066-09	1
24	SCREW-hex hd. cap, 3/8-16 x 1-1/2	LM-09219-69	2		PLATE-side, R. H. (T-16H)	LM-01660-49	1
25	SPACER-drive shaft	LM-01723-29	2	63	PLATE-side, L. H. (T-10, T-16S)	LM-01740-32	1
26	COUPLING-drive shaft	LM-01730-26	2		PLATE-side, L. H. (T-16H)	LM-01740-33	1
27	SHAFT ASSEMBLY-drive	LM-16070-37	1	*64	BRACKET-voltage reg.	LM-01769-31	1
28	WASHER-special	LM-01574-24	14	65	SCREW-hex hd. cap, 7/16-14 x 1-1/4 (T-10)	LM-09206-77	2
29	SCREW-hex hd. cap, 3/8-16 x 1-1/4	LM-09204-15	6		WASHER-lock (T-10)	LM-09181-99	15
30	FLANGE-drive shaft	LM-01722-64	1	66	WASHER-lock (T-16S)	LM-09181-99	16
31	KEY-parallel, special	LM-01574-27	1		WASHER-lock (T-16H)	LM-09181-99	17
32	SETSCREW-hex soc., 3/8-24 x 5/16	LM-16054-96	1	*67	SCREW-hex hd. cap, 7/16-14 x 1 (T-10, T-16H)	LM-09206-76	10
*33	SUPPORT ASSEMBLY-fuel tank	LM-16080-89	1	*	SCREW-hex hd. cap, (T-16S)	LM-09206-76	11
*34	CLIP-spring (T-16S)	LM-01748-93	1	68	SCREW-hex hd. cap (T-16S)	LM-09206-77	1
35	SCREW-hex hd. cap, 5/16-18 x 1/2	LM-09248-56	2		SCREW-hex hd. cap (T-16H)	LM-09206-77	3
	BEVEL GEAR BOX ASSEMBLY	LM-16062-07	1	69	SCREW-hex hd. cap	LM-09166-08	4
	Includes:			70	NUT-hex, 7/16-14 (T-16H)	LM-09182-13	3
36	HOUSING-bevel gear	LM-01717-97	1				
37	SEAL-oil	LM-01181-17	2				
38	BEARING-needle	LM-01542-79	2				
39	SHIM	LM-01717-91	1				

* Denotes new parts

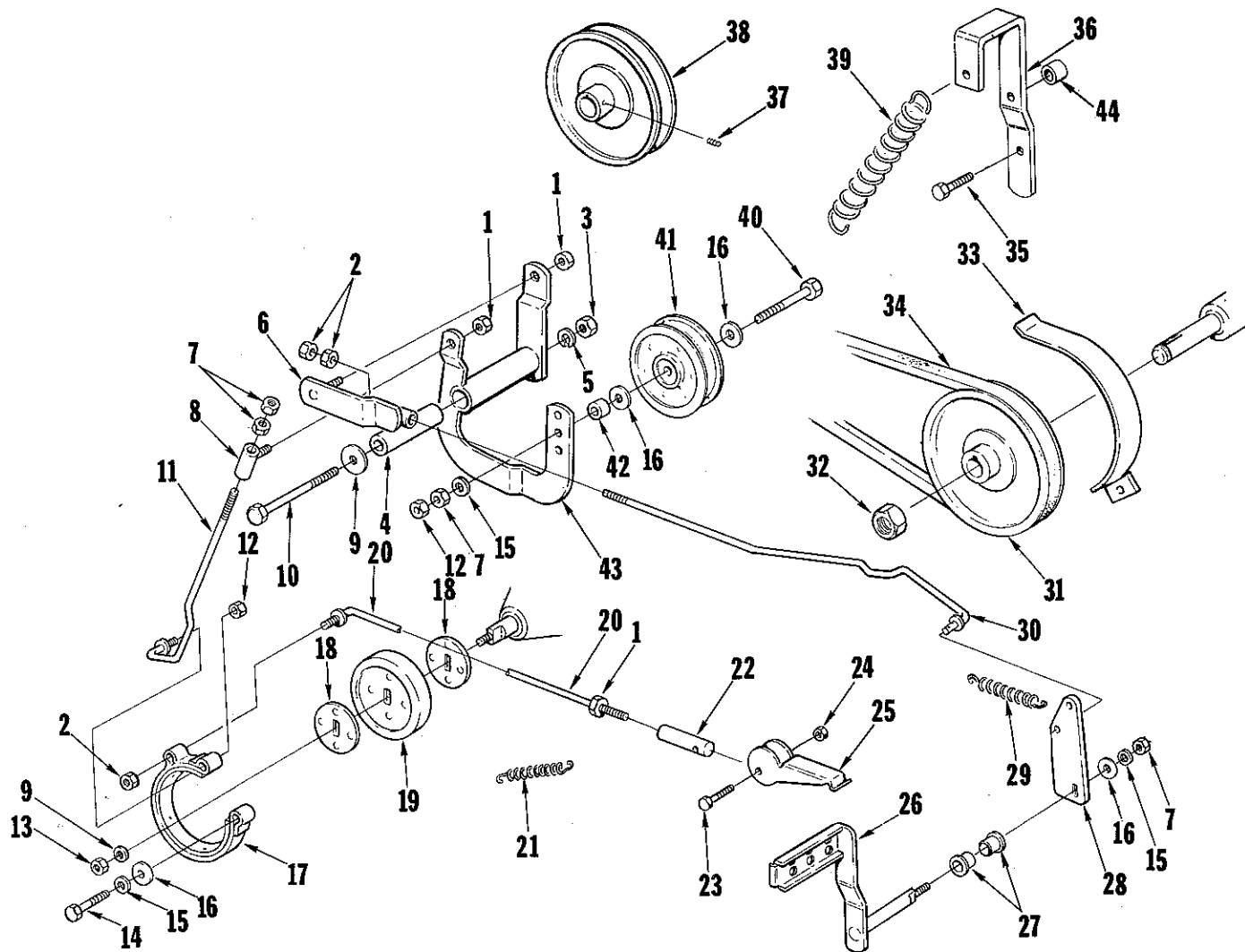
Rear Axle & Differential Assembly



No.	Description	Part No.	T-10		Qty.	No.	Description	Part No.	T-10		Qty.
			T-16S	T-16H					T-16S	T-16H	
1	COLLAR-axle	LM-01540-65	x	x	2	23	SCREW-hex hd. cap, 1/4-20 x 5/8	LM-09077-27	x	x	6
2	SET SCREW-sq., 5/16-18 x 3/8	LM-09287-09	x	x	4	24	KEY	LM-09058-58	x		1
3	BEARING	LM-01530-68	x	x	2		KEY	LM-01591-29	x		1
4	HUB ASSEMBLY-wheel (R. H.)	LM-01715-19	x		1	25	WASHER	LM-01050-50	x	x	1
*	HUB ASSEMBLY-wheel (R. H.)	LM-01769-46	x		1	26	SCREW-3/8-16 x 1-1/2	LM-16024-03	x	x	1
5	SEAL-differential cover	LM-01211-90	x	x	1	27	SCREW-set	LM-16024-04	x	x	1
6	NUT-hex lock, 3/8-16	LM-09234-28	x	x	8	28	NUT-jam, hex, 3/8-16	LM-09174-21	x	x	2
7	COVER-differential	LM-01718-54	x	x	1	29	HUB-wheel (L. H.)	LM-01542-08	x	x	1
8	NUT-hex fin., 1/4-20	LM-09166-22	x	x	6	30	KEY-drive	LM-01571-20	x	x	2
9	LOCKWASHER-1/4	LM-09169-64	x	x	6	31	AXLE-rear	LM-01715-26	x	x	1
10	RING-spacer	LM-01715-17	x	x	2	*32	WHEEL & TIRE-rear (T-10)	LM-16079-56	x		2
11	WASHER-axle	LM-01542-77	x	x	1		23 x 8.50-12				
12	PINION-differential	LM-01585-79	x	x	8		Includes:				
13	RING-retaining	LM-01542-91	x	x	1		STEM & CAP	LM-16023-39			
14	SPRING	LM-01620-85	x	x	8		TIRE-Purchase Locally				
15	GEAR-differential	LM-01642-19	x		1	*	WHEEL	LM-01702-78			
*	GEAR-differential	LM-01770-41	x		1		TUBE-Purchase Locally				
*16	KEY-Hi Pro	LM-07255-01	x		2	*32	WHEEL & TIRE-rear	LM-16079-58	x		2
	KEY-Hi Pro	LM-09283-56	x		2		23 x 10.50				
17	SPINDLE-pinion differential	LM-01210-83	x	x	8		Includes:				
18	WASHER-axle	LM-01715-15	x		3		TIRES-Purchase Locally				
	WASHER-axle	LM-01715-15	x		2	*	WHEEL	LM-01702-78			
19	WASHER-axle	LM-01540-35	x		2		TUBE-Purchase Locally				
20	COVER-differential	LM-01718-53	x	x	1	33	BOLT-hub	LM-82611-00	x	x	10
21	CARRIER-differential	LM-01642-17	x	x	1	34	FITTING-grease	LM-09150-19	x	x	1
22	SCREW-hex cap, 3/8-16 x 2-1/2	LM-09219-72	x	x	8						

* Denotes new parts

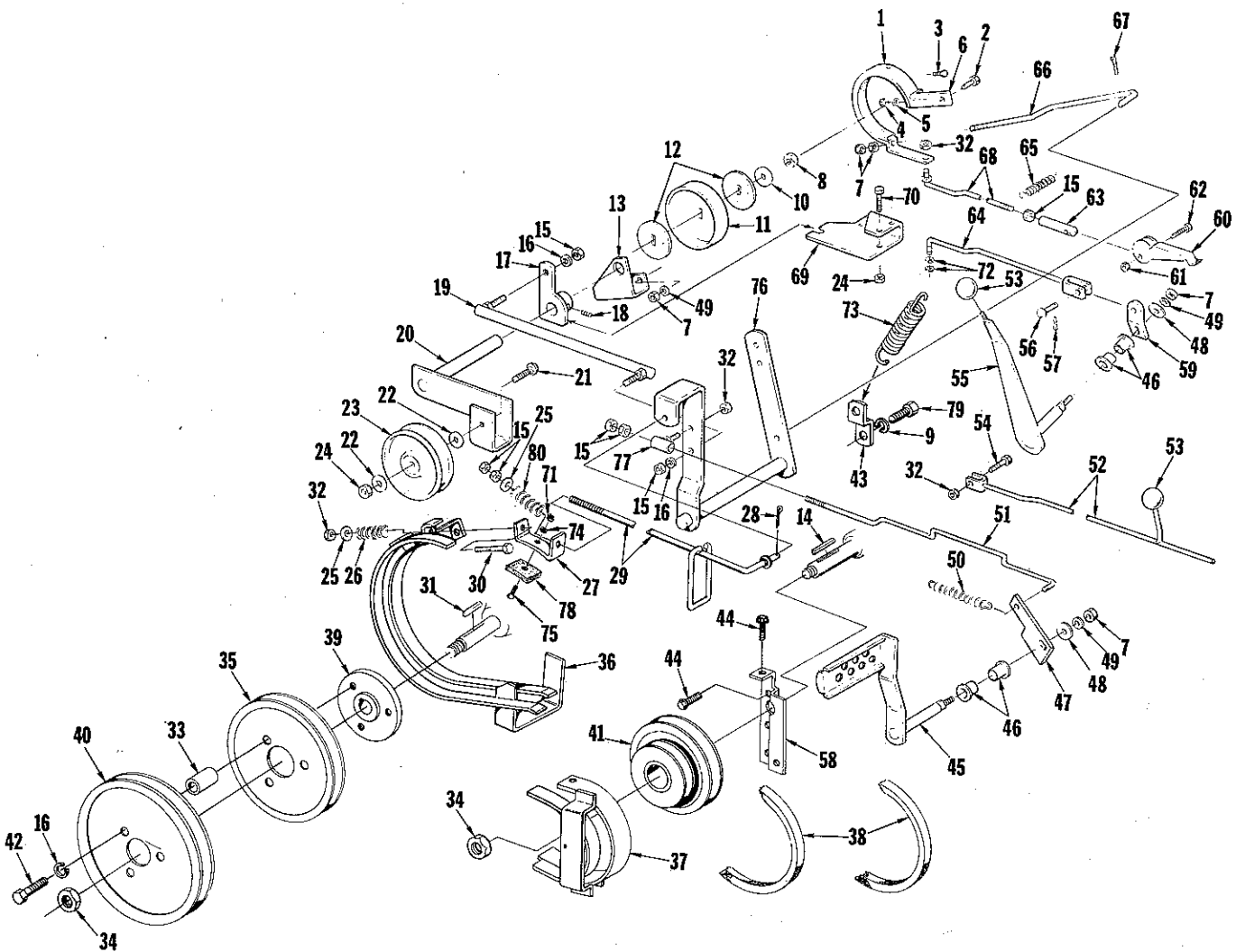
Clutch & Brake T-16H



No.	Description	Part No.	Qty.	No.	Description	Part No.	Qty.
1	NUT-hex lock, 5/16-18	LM-09233-62	3	23	SCREW-hex hd. cap, 1/4-20 x 1-1/4	LM-09287-45	1
2	NUT-hex fin, 5/16-18	LM-09173-72	3	24	NUT-hex lock, 1/4-20	LM-09233-58	1
3	NUT-hex fin, 7/16-14	LM-09182-13	1	25	LEVER-parking brake	LM-01721-08	1
4	SPACER	LM-01661-30	1	*26	PEDAL ASSEMBLY-foot	LM-01711-78	1
5	WASHER-lock, 7/16	LM-09181-99	1	27	BUSHING-flanged	LM-16104-56	2
6	GUIDE ASSEMBLY-rod	LM-01661-57	1	28	ARM-foot pedal	LM-16064-77	1
7	NUT-hex fin, 3/8-16	LM-09169-50	4	29	SPRING-brake pedal	LM-01591-06	1
8	GUIDE ASSEMBLY-rod	LM-16035-62	1	30	ROD-clutch & Brake	LM-16064-78	1
9	WASHER-flat, 7/16	LM-09184-30	2	31	PULLEY-driver	LM-16062-06	1
10	SCREW-hex hd. cap, 7/16-14 x 3-3/4	LM-09193-67	1	32	NUT-jam lock, 3/4-16	LM-16070-21	1
11	ROD ASSEMBLY-brake	LM-01724-60	1	33	RETAINER ASSEMBLY-belt	LM-16074-57	1
12	NUT-hex lock fin, 3/8-16	LM-09234-28	2	34	BELT-hydrostatic drive	LM-16029-69	1
13	NUT-hex lock, 7/16-14	LM-09240-58	1	35	SCREW-tapping (Taptite), 3/8-16 x 1	LM-09286-96	2
14	SCREW-hex hd. cap, 3/8-16 x 1-3/4	LM-09193-61	1	*36	BRACKET-spring	LM-16082-50	1
15	WASHER-lock, 3/8	LM-09169-65	3	37	SETScrew-5/16-18 x 5/16	LM-09117-12	1
16	WASHER-flat, 3/8	LM-09173-78	4	38	PULLEY-driven	LM-01661-73	1
17	BAND ASSEMBLY-brake	LM-01722-34	1	39	SPRING-idler pulley	LM-16083-95	1
18	WASHER-special	LM-01581-96	2	40	SCREW-hex hd. cap, 3/8-16 x 2-1/4	LM-09193-62	1
19	DRUM-brake	LM-01661-76	1	41	PULLEY-idler	LM-16035-15	1
20	ROD ASSEMBLY-parking brake	LM-16068-17	1	42	SPACER	LM-01570-81	1
21	SPRING	LM-01210-37	1	43	LEVER ASSEMBLY-idler	LM-01661-26	1
22	ROD-end	LM-01719-94	1	44	SPACER	LM-16104-04	1

* Denotes new parts

Clutch, Brake & Dual Range T-10



No.	Description	Part No.	Qty.
1	BAND ASSEMBLY-brake	LM-01714-97	1
2	SCREW-hex hd. cap, 3/8-16 x 1-1/4	LM-09174-00	2
3	SCREW-hex hd. cap, 1/4-20 x 3/4	LM-09160-19	2
4	NUT-hex fin, 1/4-20	LM-09166-22	2
5	WASHER-lock, 1/4	LM-09169-64	2
6	BRACKET-brake band	LM-01641-13	1
7	NUT-hex fin, 3/8-16	LM-09169-50	6
8	NUT-lock, 7/16-14	LM-09240-58	1
9	WASHER-lock	LM-09181-99	1
10	WASHER-flat, 5/16	LM-09184-30	1
11	DRUM-brake	LM-01572-82	1
12	WASHER-special	LM-01581-96	2
13	BEARING-idler pivot	LM-16070-27	1
14	KEY-Woodruff, #5	LM-09051-21	1
15	NUT-hex fin, 5/16-18	LM-09173-72	7
16	WASHER-lock, 5/16	LM-09173-56	5
17	LEVER ASSEMBLY-cam shaft	LM-16070-26	1
18	SETSCREW-hex soc, 1/4-20 x 1/4	LM-09057-59	1
19	JOINT-ball, double end	LM-16065-68	1
20	ARM ASSEMBLY-idler	LM-16070-25	1
21	BOLT-rd. hd. sq. nk, 3/8-16 x 1	LM-09232-32	1

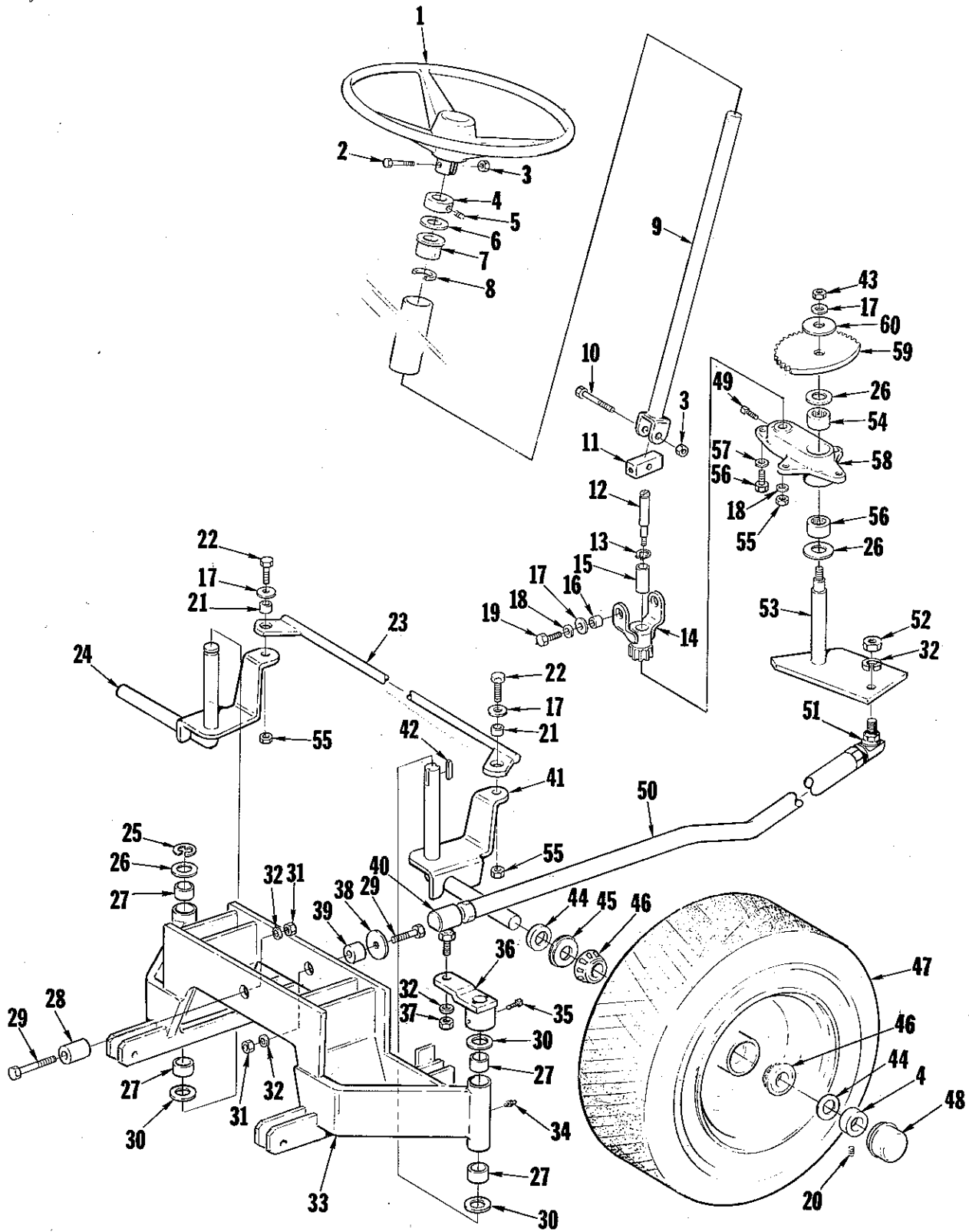
ALWAYS FURNISH MODEL AND SERIAL NUMBER WHEN ORDERING PARTS.

Clutch, Brake & Dual Range T-10

No.	Description	Part No.	Qty.
22	WASHER-flat	LM-09246-07	2
23	PULLEY	LM-16065-54	1
24	NUT-hex lock, 3/8-16	LM-09234-28	2
25	WASHER-flat	LM-09176-42	1
26	SPRING	LM-16107-03	1
27	BRAKE-sheave	LM-16105-90	1
28	PIN-cotter	LM-09193-13	1
*29	ROD-pulley brake	LM-16086-21	1
30	SCREW-hex hd. cap, 5/16-18 x 2-1/2	LM-09193-55	1
31	KEY-Hi Pro	LM-09051-23	1
32	NUT-hex lock, 5/16-18	LM-09233-62	4
*33	SPACER	LM-16083-10	3
34	NUT-lock jam, 3/4-16	LM-16070-21	2
*35	SHEAVE	LM-16081-22	1
*36	RETAINER ASSEMBLY-rear	LM-16081-27	1
*37	RETAINER ASSEMBLY, belt	LM-16083-08	1
*38	V-BELT-dual range drive	LM-16079-67	2
*39	HUB-pulley	LM-16083-09	1
*40	SHEAVE	LM-16081-23	1
*41	PULLEY-front	LM-16083-22	1
42	SCREW-hex, 5/16-18 x 2	LM-09193-54	3
*43	CLIP-spring	LM-01748-93	1
44	SCREW-hex washer, 5/16-18 x 1/2	LM-09248-56	3
*45	PEDAL ASSEMBLY-foot	LM-01711-78	1
46	BUSHING-flanged	LM-16104-56	4
47	ARM-foot pedal	LM-16064-77	1
48	WASHER-3/8	LM-09173-78	2
49	WASHER-lock, 3/8	LM-09169-65	4
50	SPRING-break pedal	LM-01591-06	1
51	ROD-clutch & brake	LM-16064-78	1
52	ROD-shift assembly	LM-16064-49	1
53	BALL-shift lever	LM-16010-42	2
54	SCREW-hex hd. cap	LM-09261-50	1
55	LEVER ASSEMBLY	LM-16066-12	1
*56	PIN	LM-16087-02	1
57	PIN-cotter	LM-09184-47	1
*58	SUPPORT-belt retainer	LM-16083-04	1
59	LINK-speed control	LM-16065-48	1
60	LEVER-parking brake	LM-01721-08	1
61	NUT-hex lock, 1/4-20	LM-09233-58	1
62	SCREW-hex hd. cap, 1/4-20 x 1-1/4	LM-09287-45	1
63	END-rod	LM-01719-94	1
64	ROD ASSEMBLY-control	LM-16066-15	1
65	SPRING	LM-01210-37	1
66	ROD-brake	LM-01641-89	1
67	PIN-cotter	LM-09184-48	1
68	ROD ASSEMBLY-parking brake	LM-16069-03	1
69	FORK-shift	LM-16065-67	1
70	SCREW-hex hd. cap, 3/8-16 x 2	LM-09174-02	1
71	NUT-hex, 10-24	LM-09166-21	1
72	"E" RING-external	LM-16027-35	2
*73	SPRING-tension	LM-01748-96	1
74	WASHER-lock, #10	LM-09173-65	1
75	SCREW-flat, 10-24 x 5/8	LM-09262-67	1
*76	LEVER ASSEMBLY-pivot	LM-16083-17	1
77	GUIDE ASSEMBLY-rod	LM-16043-19	1
*78	STRAP-pulley brake	LM-16079-43	1
79	SCREW-hex hd. cap, 7/16-14 x 1-1/4	LM-09206-77	1
80	SPRING	LM-01570-41	1

ALWAYS FURNISH MODEL AND SERIAL NUMBER WHEN ORDERING PARTS.

Steering & Front Axle



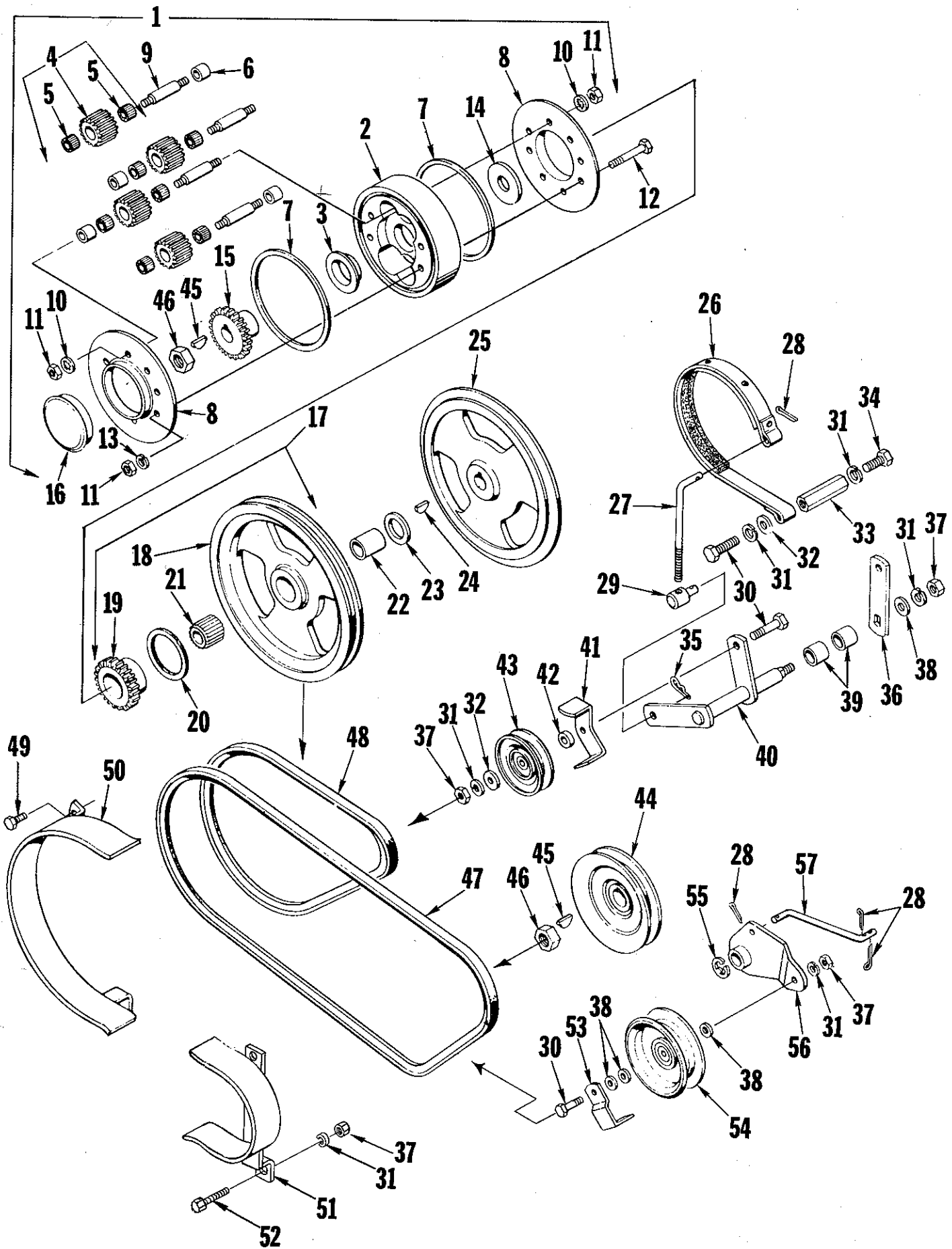
ALWAYS FURNISH MODEL AND SERIAL NUMBER WHEN ORDERING PARTS.

Steering & Front Axle

No.	Description	Part No.	Qty.
1	WHEEL-steering	LM-16063-42	1
2	SCREW-hex hd. cap, 5/16-18 x 1-1/4	LM-09219-77	1
3	NUT-hex lock, 5/16-18	LM-09233-62	2
4	COLLAR-set	LM-80210-10	3
5	SETSCREW-5/16-18 x 1/4	LM-09117-12	1
6	WASHER-special	LM-16066-91	1
7	BUSHING-steering	LM-01570-77	1
8	RING-snap	LM-01572-41	1
* 9	SHAFT ASSEMBLY-steering	LM-16086-24	1
10	SCREW-hex hd. cap, 5/16-18 x 1-1/2	LM-16013-85	1
11	PIN-Universal joint	LM-01541-53	1
12	PIN-eccentric	LM-01572-53	1
13	RING-retainer	LM-01583-99	1
14	BUSHING ASSEMBLY	LM-01572-54	1
15	Includes: BUSHING	LM-01572-58	1
16	SPACER	LM-01530-81	2
17	WASHER-flat, 3/8	LM-09173-78	5
18	WASHER-lock, 3/8	LM-09169-65	3
19	SCREW-hex hd. cap, 3/8-16 x 3/4	LM-09219-65	2
20	SETSCREW-5/16-18 x 5/16	LM-09296-98	2
21	SPACER	LM-16010-78	2
22	SCREW-cap, 3/8-16 x 1-1/4	LM-09204-15	2
23	ROD-tie	LM-16063-65	1
24	SPINDLE ASSEMBLY-(R. H.)	LM-16063-62	1
25	RING-retaining	LM-09277-94	1
26	WASHER	LM-80610-12	3
27	BEARING	LM-01542-89	4
28	SPACER	LM-16064-03	1
29	SCREW-hex hd. cap, 1/2-13 x 2	LM-09210-24	2
30	WASHER	LM-01081-81	3
31	NUT-hex fin.	LM-09169-51	2
32	WASHER-lock, 1/2	LM-09169-66	4
33	AXLE ASSEMBLY-front	LM-16065-03	1
34	FITTING-lube, straight	LM-09146-87	2
35	SETSCREW-sq. hd., 5/16-18 x 1/2	LM-09230-85	2
36	ARM ASSEMBLY-steering	LM-16066-62	1
37	NUT-hex jam, 1/2-20	LM-09192-62	3
38	WASHER-flat	LM-09243-58	1
39	SPACER	LM-16066-49	1
40	JOINT-ball	LM-01642-72	1
41	SPINDLE ASSEMBLY (L. H.)	LM-16063-63	1
42	KEY	LM-01574-27	2
43	NUT-hex lock, 7/16	LM-09240-58	1
44	SPACER	LM-01713-75	4
45	SEAL	LM-01701-68	2
46	CONE-bearing	LM-01544-86	4
47	WHEEL & TIRE ASSEMBLY-front 16 x 6.50 x 8	LM-16079-61	2
	Includes:		
	WHEEL	LM-16071-33	2
	VALVE & CAP	LM-16010-72	2
	BEARING-cup	LM-16023-19	2
	TIRE-Purchase Locally		2
	TUBE-Purchase Locally		2
48	CAP-hub	LM-01544-87	2
49	SETSCREW	LM-09012-71	1
*50	ROD-drag	LM-16086-32	1
	Includes:		
51	BALL-joint	LM-01642-72	1
52	NUT-jam	LM-09192-62	1
53	ARM ASSEMBLY-steering	LM-16066-11	1
54	NEEDLE BEARING	LM-01542-58	2
55	NUT-hex lock, 3/8-16	LM-09234-28	3
56	SCREW-hex hd. cap, 5/16-18 x 5/8	LM-09193-18	4
57	WASHER-lock, 5/16	LM-09173-56	4
58	BRACKET-steering	LM-01573-02	1
59	GEAR-STEERING	LM-16065-01	1
60	WASHER-arbor	LM-01081-82	1

ALWAYS FURNISH MODEL AND SERIAL NUMBER WHEN ORDERING PARTS.

Shuttle Drive



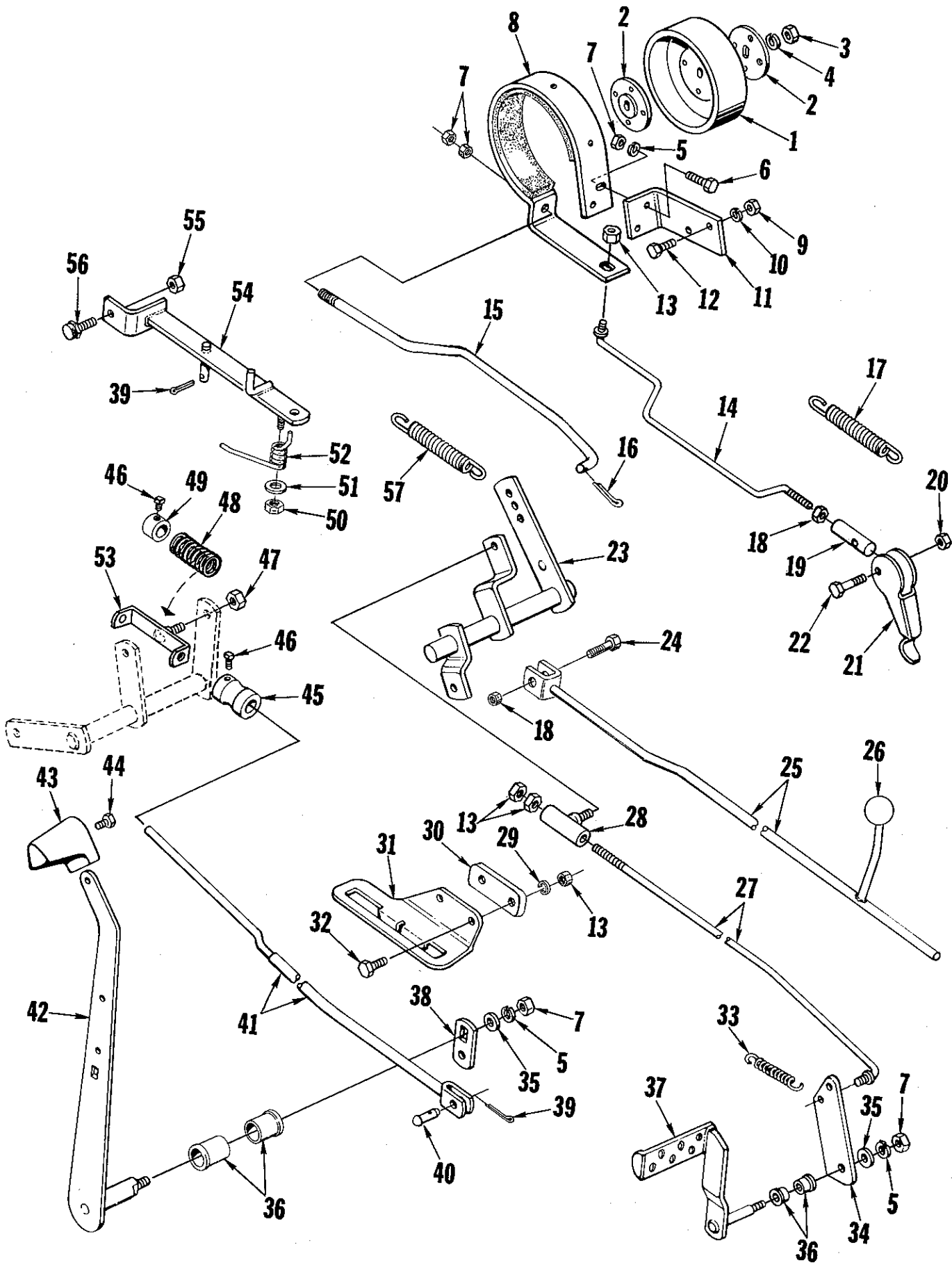
ALWAYS FURNISH MODEL AND SERIAL NUMBER WHEN ORDERING PARTS.

Shuttle Drive

No.	Description	Part No.	Qty.
* 1	PLANETARY ASSEMBLY	LM-01762-56	1
	Includes:		
* 2	PLANETARY CARRIER	LM-01745-86	1
	Includes:		
* 3	BEARING-flanged	LM-01737-89	1
* 4	PINION-differential assembly	LM-01762-57	4
	Includes:		
* 5	BEARING-needle	LM-01745-67	8
* 6	BEARING-sleeve	LM-01745-69	4
* 7	"O" Ring	LM-01743-99	2
* 8	COVER-differential	LM-01744-04	2
* 9	PIN-pinion	LM-01740-25	4
*10	WASHER-lock shakeproof, 5/16	LM-09233-00	8
11	NUT-hex full, 5/16 x 18	LM-09173-72	12
12	SCREW-hex cap, 5/16-18 x 2	LM-09193-54	4
13	WASHER-lock, 5/16	LM-09173-56	4
*14	WASHER-thrust	LM-01742-74	1
*15	GEAR-differential	LM-01757-14	1
*16	CAP-hub	LM-01745-84	1
*17	PULLEY ASSEMBLY	LM-01762-55	1
	Includes:		
*18	PULLEY	LM-01737-94	1
*19	GEAR-sun	LM-01757-12	1
*20	SEAL	LM-01749-81	1
*21	BEARING-roller seal	LM-01745-92	1
*22	INNER-race	LM-01745-68	1
*23	BEARING-thrust	LM-01745-70	1
24	KEY-Woodruff #9	LM-09051-23	1
*25	PULLEY-half	LM-01737-93	1
*26	BRAKE BAND ASSEMBLY	LM-01743-81	1
*27	ROD	LM-01743-85	1
28	PIN-cotter	LM-09184-47	4
29	PIVOT	LM-01081-72	1
30	SCREW-hex cap, 3/8-16 x 1-1/2	LM-09193-60	3
31	WASHER-lock, 3/8	LM-09169-65	6
32	WASHER-plain, 5/16	LM-09176-42	2
*33	BRAKE-anchor	LM-01743-86	1
34	SCREW-hex cap, 3/8-16 x 1	LM-09212-10	1
35	PIN-quick	LM-01067-87	1
*36	LEVER	LM-01744-27	1
37	NUT-hex full, 3/8-16	LM-09169-50	4
38	WASHER-plain, 3/8	LM-09173-78	5
*39	BUSHING	LM-01180-92	2
*40	LEVER ASSEMBLY	LM-01738-64	1
41	GUIDE-belt	LM-01744-02	1
42	SPACER	LM-01748-70	1
43	PULLEY-idler	LM-01745-61	1
*44	PULLEY	LM-01743-59	1
45	KEY-hi pro, 3/16 x 3/4	LM-09221-39	2
46	NUT-jam lock, 3/4-16	LM-16070-21	2
*47	"V" Belt	LM-01747-31	1
*48	"V" Belt	LM-01748-83	1
49	SCREW-Taptite hex hd. 5/16-18 x 1/2	LM-09248-56	2
*50	GUARD ASSEMBLY PULLEY	LM-01743-94	1
*51	GUARD ASSEMBLY-belt	LM-16078-98	1
52	BOLT-carriage, 3/8-16 x 1	LM-09077-31	1
*53	GUIDE-belt	LM-01067-17	1
54	PULLEY	LM-01744-97	1
55	"E" Ring	LM-16021-55	1
*56	LEVER ASSEMBLY IDLER	LM-01738-61	1
*57	LINK-clutch	LM-01640-88	1

* Denotes new parts

Shuttle Controls



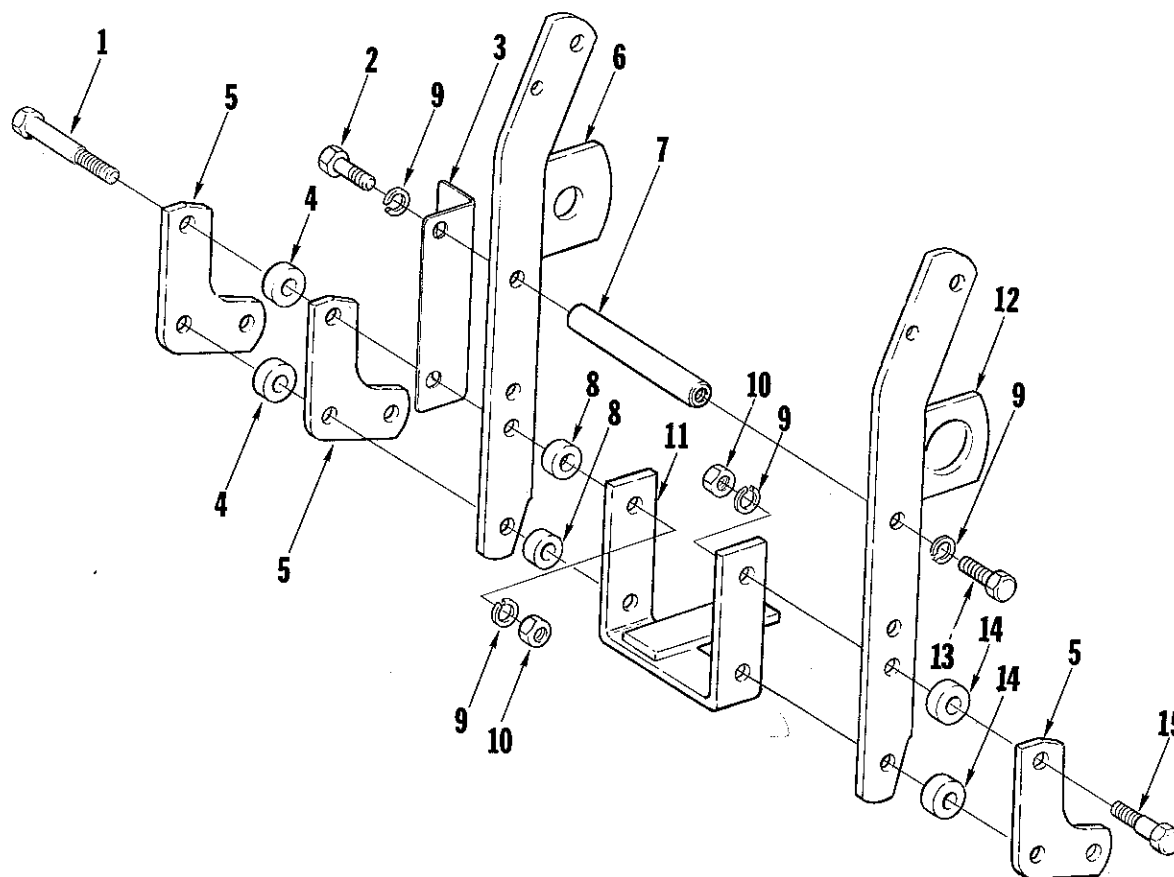
ALWAYS FURNISH MODEL AND SERIAL NUMBER WHEN ORDERING PARTS.

Shuttle Controls

No.	Description	Part No.	Qty.
1	BRAKE DRUM	LM-01572-82	1
2	WASHER-special	LM-01581-96	2
3	NUT-hex, full, 7/16-14	LM-09240-58	1
4	WASHER-lock, 7/16	LM-09184-30	1
5	WASHER-lock, 3/8	LM-09169-65	4
6	SCREW-hex, cap, 3/8-16 x 1	LM-09077-31	2
7	NUT-hex full, 3/8-16	LM-09169-50	4
8	BRAKE BAND ASSY.	LM-01714-97	1
9	NUT-hex full, 1/4-20	LM-09166-22	2
10	WASHER-lock, 1/4	LM-09169-64	2
11	BRACKET-brake band	LM-01641-13	1
12	SCREW-hex cap, 1/4-20 x 3/4	LM-09160-19	2
13	NUT-hex full, 5/16-18	LM-09173-72	5
14	ROD-parking brake	LM-16069-03	1
15	ROD-brake	LM-01641-89	1
16	PIN-cotter	LM-09184-48	1
17	SPRING	LM-01210-37	1
18	NUT-hex full, 5/16-18	LM-09233-62	3
19	ROD END	LM-01719-94	1
20	NUT-hex lock full, 1/4-20	LM-09233-58	1
21	LEVER-parking brake	LM-01721-08	1
22	SCREW-hex cap, 1/4-20 x 1-1/4	LM-09287-45	1
*23	LEVER-pivot	LM-01640-89	1
24	SCREW-hex cap, 5/16-18 x 1-1/2	LM-09261-50	1
25	ROD-shift	LM-16064-49	1
26	KNOB-ball	LM-16010-42	1
*27	ROD ASSY.-clutch & brake	LM-16080-37	1
28	GUIDE-rod assy.	LM-16043-19	1
29	WASHER-lock, 5/16	LM-09173-56	2
30	SPACER-speed control quadrant	LM-16074-15	1
*31	QUADRANT	LM-01744-73	1
32	SCREW-hex hd., 5/16-18 x 3/4	LM-09173-97	2
33	SPRING-tension	LM-01591-06	1
34	ARM-foot pedal	LM-16064-77	1
35	WASHER-plain, 3/8	LM-09173-78	2
36	BUSHING-flanged	LM-16104-56	4
37	FOOT PEDAL ASSEMBLY	LM-01711-78	1
38	LINK	LM-16065-48	1
39	PIN-cotter, 3/32 x 3/4	LM-09184-47	2
*40	PIN	LM-16087-02	1
*41	ROD ASSEMBLY SPEED CONTROL	LM-16081-95	1
42	LEVER ASSEMBLY SPEED CONTROL	LM-01710-72	1
43	KNOB	LM-01711-65	1
44	SCREW-hex self forming	LM-09221-25	1
*45	DETENT-brake	LM-01748-55	1
46	SCREW-set sqr. hd., 1/4-20 x 3/8	LM-09288-04	2
47	NUT-hex full lock, 3/8-16	LM-09234-28	1
48	SPRING	LM-01620-65	1
49	COLLAR-set	LM-16024-35	1
50	NUT-hex jam, 3/8-16	LM-09287-31	1
51	WASHER-5/16	LM-09176-42	1
*52	SPRING	LM-16077-18	1
*53	ROD-guide assembly	LM-01753-35	1
*54	BRAKE-lever assembly	LM-16077-17	1
55	NUT-hex jam, 5/16-18	LM-09201-61	1
*56	PAD-brake	LM-01748-54	1
57	SPRING	LM-01748-96	1

* Denotes new parts

Draw Bar Assembly T-16H



No.	Description	Part No.	Qty.
1	SCREW-hex hd. cap, 7/16-14 x 3	LM-09193-65	2
2	SCREW-hex hd. cap, 7/16-14 x 1-3/4	LM-09166-09	1
3	PLATE-decal	LM-01661-98	1
4	SPACER	LM-01660-76	2
5	PLATE-draw	LM-01660-75	3
6	BAR ASSEMBLY-upright	LM-01662-06	1
7	SPACER	LM-01661-10	1
8	SPACER	LM-16066-41	2
9	WASHER-lock, 7/16	LM-09181-99	6
10	NUT-hex, 7/16-14	LM-09182-13	4
11	DRAWBAR ASSEMBLY	LM-16066-38	1
12	BAR ASSEMBLY-upright	LM-01660-72	1
13	SCREW-hex hd. cap, 5/16-14 x 1-1/4	LM-09164-32	1
14	SPACER	LM-16066-42	2
15	SCREW-hex hd. cap, 7/16-14 x 2-1/4	LM-09193-64	2

* Denotes new parts

Description	Part No.	T-10	T-16S	T-16H	Qty.	Description	Part No.	T-10	T-16S	T-16H	Qty.
*FILM-shift	LM-01762-99				x 1	*DECAL-hydrostatic	LM-16072-89				x 2
*PLATE-safety	LM-16082-02		x		1	DECAL-T-10	LM-16075-50	x			3
PAINT-spray can (blue) 12 oz.	24764	x	x	x		*DECAL-T-16	LM-16081-56		x	x	3
PAINT-spray can (white) 12 oz.	24765	x	x	x		*DECAL-instrument panel	LM-16082-99	x			1
PAINT-spray can (black) 12 oz.	22772	x	x	x		*DECAL-instrument panel	LM-16082-03		x		1
*PAINT-safety w/shift pattern	LM-16082-98	x			1	*DECAL-instrument panel	LM-16081-46			x	1
*PAINT-safety w/shift pattern	LM-16084-97			x	1	*DECAL-caution	LM-16081-48	x	x	x	1
PLAQUE-hood (R. H.)	LM-16075-49	x	x	x	1	DECAL-parking brake	LM-01728-16	x	x	x	1
PLAQUE-hood (L. H.)	LM-16075-48	x	x	x	1	*DECAL-quadrant	LM-16081-55				x 1
PLAQUE-grille	LM-16075-47	x	x	x	1	FILM-inst. (clutch & brake)	LM-01749-24	x	x	x	1
STUD RECEIVER-push on	LM-16076-22	x	x	x	13						
*DECAL-shuttle	LM-16086-25			x	2						

* Denotes new parts

ALWAYS FURNISH MODEL AND SERIAL NUMBER WHEN ORDERING PARTS.

Part No.	Description	Qty.	Part No.	Description	Qty.	Part No.	Description	Qty.	Part No.	Description	Qty.
LM 01065	82 Gasket-felt	8	LM 01562	09 Grip-lift lever	1	LM 01660	83 Rod Assembly	1	*LM 01738	59 Plate-side	1
*LM 01067	17 Guide-belt	1	LM 01570	41 Spring	1	LM 01660	88 Turnbuckle	1	*LM 01738	61 Lever Assembly	1
LM 01067	87 Pin-quick	1	LM 01570	77 Bushing-steering 1	1	LM 01660	89 Rod Assembly	1	*LM 01738	64 Lever Assembly	1
LM 01071	35 Spring	1	LM 01570	81 Spacer	1	LM 01660	92 Link Assembly	1	LM 01739	66 Shaft-driven	1
LM 01081	34 Ring-retaining	1	LM 01570	91 Bar-pull	1	LM 01660	95 Shaft Assembly	1	*LM 01743	38 Shaft-pulley	1
LM 01081	72 Pivot	1	LM 01570	94 Connector	2	LM 01660	97 Unit Assembly	1	*LM 01743	59 Pulley	1
LM 01082	02 Bearing	1	LM 01571	02 Arm-belt	1	LM 01661	03 Cover-gearcase	1	*LM 01740	25 Pin-pinion	4
*LM 01180	92 Bushing	2	LM 01571	20 Key-drive	2	LM 01661	05 Case-gear	1	LM 01740	32 Plate-side (R. H.)	1
LM 01181	17 Seal-oil	2	LM 01571	94 Pin	1	LM 01661	10 Spacer	1	LM 01740	33 Plate-side (L. H.)	1
LM 01210	37 Spring	2	LM 01572	41 Ring-snap	1	LM 01661	11 Deck Assembly	1	*LM 01742	28 Pinion	1
LM 01210	83 Spindle-pinion	8	LM 01572	53 Pin-eccentric	1	LM 01661	14 Shroud Assembly	1	*LM 01742	34 Gear-2nd & 4th	1
LM 01210	84 Spacer	2	LM 01572	54 Bushing Assembly	1	LM 01661	26 Lever Assembly	1	*LM 01743	81 Brake Band Assy.	1
LM 01210	87 Spring	1	LM 01572	58 Bushing	1	LM 01661	30 Spacer	1	*LM 01743	85 Rod	7
LM 01211	90 Seal-differential	1	LM 01572	82 Drum-brake	2	LM 01661	34 Deflector-cooler	1	*LM 01743	86 Brake-anchor	1
LM 01221	43 Insulation-fuel	1	LM 01572	90 Shaft	1	LM 01661	35 Cooler-oil	1	*LM 01743	94 Guard Assembly	1
LM 01221	64 Bulb	2	LM 01573	02 Bracket-steering 1	1	LM 01661	36 Hose-hydraulic	1	*LM 01743	99 "O" Ring	2
LM 01221	75 Lamp Assembly	2	LM 01573	15 Bracket-throttle	1	LM 01661	37 Hose-hydraulic	1	LM 01744	02 Guide-belt	1
LM 01221	84 Switch-toggie	1	LM 01574	27 Key-drive	3	LM 01661	38 Hose-hydraulic	2	*LM 01744	04 Cover-differential	2
LM 01221	93 Regulator-voltage	1	LM 01575	16 Case	1	LM 01661	39 Insert-beaded	2	*LM 01744	27 Lever	1
LM 01222	01 Switch	1	LM 01575	19 Bearing-needle	3	LM 01661	40 Reservoir	1	LM 01744	73 Quadrant	1
LM 01222	16 Solenoid	1	LM 01575	20 Bearing-needle	1	LM 01661	47 Element-filter	1	LM 01744	97 Pulley	1
LM 01222	33 Switch-safety	1	LM 01576	19 Seal-oil	2	LM 01661	57 Guide Assembly	1	LM 01745	61 Pulley-idler	1
LM 01222	36 Motor-generator	1	LM 01576	20 Bearing	4	LM 01661	60 Clip-spring	1	*LM 01745	67 Bearing-needle	8
LM 01222	82 Connector	1	LM 01576	24 Set-collar	4	LM 01661	65 Cap-plug	1	*LM 01745	68 Inner-race	1
LM 01520	06 Spring	1	LM 01576	25 Lever Assembly	2	LM 01661	71 Spring	1	*LM 01745	69 Bearing-steel	4
LM 01530	68 Bearing	2	LM 01583	99 Ring-retainer	1	LM 01661	73 Pulley-driven	1	*LM 01745	70 Bearing-thrust	1
LM 01530	81 Spacer	2	LM 01585	79 Pinion-diff.	8	LM 01661	76 Drum-brake	1	*LM 01745	82 Gearcase	1
LM 01540	40 Plate-bearing	1	LM 01591	06 Spring-brake	3	LM 01661	78 Ball-shift	1	*LM 01745	84 Cap-hub	7
LM 01540	65 Collar-axle	2	LM 01591	29 Key	1	LM 01661	98 Plate-decal	1	*LM 01745	86 Planetary	7
LM 01540	67 Shaft-shifter	1	LM 01620	65 Spring	1	LM 01662	06 Bar Assembly	1	*LM 01745	92 Bearing-roller	1
LM 01540	68 Shaft	1	LM 01620	85 Spring	8	LM 01701	68 Seal	2	*LM 01745	47 "V" Belt	1
LM 01540	69 Fork-shift	2	LM 01640	29 Bracket-front	1	*LM 01702	78 Wheel	2	*LM 01748	54 Pad-brake	1
LM 01540	72 Pinion Assembly	1	LM 01640	51 Gear	2	LM 01710	72 Lever Assembly	2	*LM 01748	55 Detent-brake	1
LM 01540	75 Pinion Assembly	1	LM 01640	62 Pinion	1	LM 01711	65 Knob	2	LM 01748	70 Spacer	1
LM 01540	78 Gear-driven	1	LM 01640	64 Ring-retaining	1	*LM 01711	78 Pedal Assembly	3	*LM 01748	83 "V" Belt	1
LM 01540	79 Pinion	1	*LM 01640	88 Link-clutch	1	LM 01712	95 Indicator	1	*LM 01748	93 Clip-spring	2
LM 01540	80 Pinion-driven	1	*LM 01640	89 Lever-pivot	1	LM 01713	34 Choke	1	*LM 01748	96 Spring-tension	2
LM 01540	81 Gear-driven	1	LM 01641	13 Bracket-brake	2	LM 01713	75 Spacer	4	*LM 01749	81 Seal	1
LM 01540	82 Spacer	1	LM 01641	89 Rod-brake	2	LM 01714	29 Quadrant-speed	1	*LM 01757	12 Gear-sun	1
LM 01540	84 Spacer	1	LM 01642	17 Carrier-diff.	1	LM 01714	32 Clamp-stop	1	*LM 01757	14 Gear-differential	1
LM 01540	86 Shaft-2nd	1	LM 01642	19 Gear-differential 1	1	LM 01714	97 Band Assembly	2	*LM 01762	34 Fork-shift	1
LM 01540	87 Gear	1	LM 01642	22 Tube & Bushing	1	LM 01715	17 Ring-spacer	2	*LM 01762	36 Pinion & Gear	1
LM 01540	89 Gear	1	LM 01642	24 Bushing	3	LM 01715	19 Hub Assembly	1	*LM 01762	38 Shaft Assembly	1
LM 01540	90 Spacer	1	LM 01642	26 Cover	1	LM 01715	26 Axle-rear	1	*LM 01762	39 Shaft-shift	1
LM 01540	91 Shaft	1	LM 01642	34 Gasket-gear case	1	LM 01715	93 Lever Lift	1	*LM 01762	42 Flange-drive	1
LM 01540	92 Pinion	1	LM 01642	49 Cover-housing	1	LM 01716	79 Guide Assembly	1	*LM 01762	44 Key	1
LM 01540	95 Gear-drive	1	LM 01642	50 Rod-shift	1	LM 01717	87 Seal-oil	1	*LM 01762	45 Gear	1
LM 01540	96 Key	4	LM 01642	51 Support-switch	1	LM 01717	90 Shim	5	*LM 01762	46 Brake-shaft	1
LM 01540	98 Spacer	1	LM 01642	72 Joint-ball	2	LM 01717	91 Shim	1	*LM 01762	55 Pulley Assembly	1
LM 01541	53 Pin	1	LM 01642	84 Arm Assembly	1	LM 01717	92 Spacer-pulley	1	*LM 01762	56 Planetary Assy.	1
LM 01542	03 Bar-draw	1	LM 01642	94 Key	1	LM 01717	96 Gear-bevel	1	*LM 01762	57 Pinion	4
LM 01542	08 Hub-wheel	1	LM 01643	04 Arm Assembly	1	LM 01717	97 Housing	1	*LM 01762	99 Flim-shift	1
LM 01542	26 Spacer	1	LM 01650	73 Clip-speed	1	LM 01718	11 Cable-battery	1	*LM 01769	31 Bracket-voltage	1
LM 01542	27 Button-thumb	1	LM 01650	74 Clip-speed	7	LM 01718	53 Cover-diff'l.	1	*LM 01769	46 Hub Assembly	1
LM 01542	57 Bearing-needle	2	LM 01660	03 Pinion-motor	1	LM 01718	54 Cover-diff'l.	1	*LM 01769	80 Ring-retainer	2
LM 01542	58 Bearing-needle	3	*LM 01660	05 Pinion	1	LM 01718	80 Strap-muffler	1	*LM 01770	41 Gear-differential	1
LM 01542	59 Bearing-needle	4	LM 01660	06 Gear-drive	1	LM 01719	94 Rod-end	3	*LM 01770	41 Gear-differential	1
LM 01542	61 Stem-shift	1	LM 01660	12 Shaft	1	LM 01720	61 Clamp-muffler	1	*LM 07255	01 Key-Hi Pro	2
LM 01542	62 Ball-shift lock	3	LM 01660	17 Ring-retaining	1	LM 01721	08 Lever-parking	1	LM 09016	52 Plug-pipe	2
LM 01542	63 Seal-oil	1	LM 01660	18 Bearing-needle	2	LM 01721	63 Harness	1	LM 09016	53 Plug-pipe	6
LM 01542	64 Ring-retaining	2	LM 01660	19 Bearing-needle	2	LM 01721	95 Elbow & Nipple	1	LM 09017	23 Elbow-street	3
LM 01542	66 Ring-retaining	2	LM 01660	20 "O" Ring	1	LM 01722	06 Ring-retaining	2	LM 09051	23 Key-woodruff	1
LM 01542	67 Key	1	LM 01660	21 Seal-oil	1	LM 01722	34 Hand Assembly	1	LM 09051	23 Key	5
LM 01542	68 Ring-snap	4	LM 01660	22 Fan-pulley	1	LM 01722	56 Bearing-ball	2	LM 09058	58 Key	1
LM 01542	69 Seal	4	LM 01660	24 "O" Ring	2	LM 01722	64 Flange	1	LM 09102	24 Key-woodruff	2
LM 01542	71 Bearing-needle	2	LM 01660	26 "O" Ring	1	LM 01723	29 Spacer	2	LM 09128	08 Fitting-lube	2
LM 01542	79 Bearing-needle	2	LM 01660	29 Stem-shift	1	LM 01723	34 Clip-cable	2	LM 09146	87 Fitting-lube	2
LM 01542	82 Gasket	1	LM 01660	40 Spacer	1	LM 01724	36 Cable Clip	1	LM 09150	19 Fitting-grease	1
LM 01542	89 Bushing	4	LM 01660	41 Spacer	1	LM 01724	60 Rod Assembly	1	LM 09169	37 Pin-spring	1
LM 01542	91 Ring-retaining	1	LM 01660	43 Gasket-gearcase	1	LM 01724	60 Rod Assembly	1	LM 09181	13 Pin-roll	3
LM 01543	23 Spring	3	LM 01660	44 Clamp-hose	8	LM 01727	25 Pulley	2	LM 09183	90 Pin-roll	2
LM 01543	26 Plug-pipe	1	LM 01660	47 Spring	1	LM 01724	44 Strap-rubber	2	LM 09211	33 Fitting-lube	1
LM 01543	52 Pin Assembly	1	LM 01660	63 Spacer	1	LM 01727	50 Shaft-driver	1	LM 09213	46 Key-parallel	6
LM 01543	54 Key	1	LM 01660	66 Tube Assembly	1	LM 01727	52 Gear-bevel	1	LM 09221	39 Key-Hi Pro	2
LM 01543	72 Clamp-hose	4	LM 01660	72 Bar Assembly	1	LM 01728	16 Decal-parking	1	LM 09235	48 "O" Ring	1
LM 01544	86 Wheel & Tire	2	LM 01660	75 Plate-draw	3	LM 01730	39 Latch-lift lever	1	LM 09253	07 Clip-closed	3
LM 01544	87 Cap-hub	2	LM 01660	76 Spacer	4	LM 01732	06 Filter-fuel	1	LM 09277	94 "E" Ring	1
LM 01545	37 Roll Pin	1	LM 01660	78 Spacer	1	*LM 01737	89 Bearing-flanged	1	LM 09283	56 Key-Hi Pro	2
LM 01545	38 Roll Pin	1	LM 01660	79 Joint-ball	1	*LM 01737	93 Pulley-half	1	LM 09287	12 Key-parallel	1
*LM 01545	83 Plug-expansion	1	LM 01660	80 Cover-reservoir	1	*LM 01737	94 Pulley	1	LM 16010	42 Knob-ball	3
						*LM 01738	07 Shaft-pulley	1	LM 16010	72 Valve, Stem, & Cap	2
									LM 16010	78 Spacer	2

ALWAYS FURNISH MODEL AND SERIAL NUMBER WHEN ORDERING PARTS.

Part No.	Description	Qty.	Part No.	Description	Qty.	Part No.	Description	Qty.	Part No.	Description	Qty.
LM 16012	43 Cable-battery	1	LM 16070	27 Bearing-idler	1	LM 01081	81 Washer-special	3	LM 09192	62 Nut-1/2-20	5
LM 16021	02 Grommet-rubber	3	LM 16071	33 Wheel	2	LM 01081	82 Washer	1	LM 09193	13 Pin-cotter	1
LM 16021	55 "E" Ring	3	LM 16070	37 Shaft Assembly	1	LM 01084	72 Washer-special	5	LM 09193	18 5/16-18 x 5/8	11
LM 16023	19 Cup-bearing	2	LM 16071	83 Screen-grille	1	LM 01222	34 Nut-hex	1	LM 09193	19 5/16-18 x 7/8	1
LM 16023	39 Stem, Valve & Cap	1	LM 16072	42 Switch-toggle	1	LM 01222	35 Nut-9/16-24	1	LM 09193	54 5/16-18 x 2	11
LM 16024	35 Collar-set	1	LM 16072	43 Switch-toggle	1	LM 01231	44 Washer	1	LM 09193	55 5/16-18 x 2-1/2	1
LM 16027	24 Cap-fuel	1	LM 16072	44 Light-pilot	1	LM 01540	26 Washer	1	LM 09193	60 3/8-16 x 1-1/2	6
LM 16027	35 "E" Ring	2	*LM 16072	89 Decal-hydrostatic	2	LM 01540	35 Washer-axle	2	LM 09193	61 3/8-16 x 1-3/4	1
LM 16029	69 Belt-hydrostatic	1	LM 16073	23 Belt-generator	1	LM 01540	38 Washer	1	LM 09193	62 3/8-16 x 2-1/4	1
LM 16031	04 Clip-throttle	1	LM 16073	36 Decal-Wheel	4	LM 01540	97 Washer	5	LM 09193	64 7/16-14 x 2-1/4	2
LM 16032	49 Key-ignition	1	LM 16073	42 Clamp	1	LM 01541	30 Washer-axle	2	LM 09193	65 7/16-14 x 3	2
LM 16032	78 Latch-hood	2	LM 16073	43 Clamp	1	LM 01542	77 Washer-axle	1	LM 09193	67 7/16-14 x 3-3/4	1
LM 16033	34 Actuator-electric	1	LM 16073	57 Label	1	LM 01542	81 5/16-18 x 3/4	1	LM 09193	81 Washer-11/32 x 1	1
LM 16035	15 Pulley-idler	1	LM 16073	60 Battery	1	LM 01543	25 Washer	1	LM 09199	29 1/4-20 x 2	2
LM 16035	49 Plug	1	LM 16073	72 Lead-switch	1	LM 01543	78 Nut-lock	1	LM 09204	15 3/8-16 x 1-1/4	8
LM 16035	62 Guide Assembly	1	LM 16074	15 Spacer-speed	2	LM 01544	62 Washer	1	LM 09201	61 Nut-5/16-18	2
LM 16036	18 Cable-solenoid	1	LM 16074	57 Retainer Assy.	1	LM 01572	15 Bolt-eye	1	LM 09202	63 Nut-5/16-24	2
LM 16043	19 Guide Assembly	2	LM 16075	47 Plaque-grille	1	LM-01574	24 Washer-special	14	LM 09204	38 Nut-5/16-24	1
LM 16044	40 Boot-rubber	1	LM 16075	48 Plaque-hood	1	LM 01581	96 Washer-special	6	*LM 09206	76 Screw-hex	21
LM 16044	51 Speed Clip	1	LM 16075	49 Plaque-hood	1	LM 01660	13 Washer	3	LM 09206	77 7/16-14 x 1-1/4	7
LM 16045	56 Rivet-pop	4	LM 16075	50 Decal	3	LM 01660	16 Washer	2	LM 09210	24 1/2-13 x 2	2
LM 16060	49 Plate-side	1	LM 16076	22 Stud-receiver	13	LM 01660	51 Bolt-shoulder	1	LM 09212	10 3/8-16 x 1	3
LM 16062	06 Pulley-driver	1	*LM 16076	48 Quadrant	1	LM 01661	50 Washer	1	LM 09213	32 5/16-18 x 3/4	2
LM 16062	07 Bevel Gear Box	1	*LM 16077	17 Brake-lever	2	LM 01661	61 Washer-nylon	1	LM 09213	33 5/16-18 x 1	4
LM 16063	42 Wheel-steering	1	*LM 16077	18 Spring	1	LM 01661	67 Washer	1	LM 09219	65 3/8-16 x 3/4	2
LM 16063	62 Spindle Assembly	1	LM 16078	70 Stop-seat deck	2	LM 01715	15 Washer-axle	5	LM 09219	69 3/8-16 x 1-1/2	2
LM 16063	65 Rod Assembly	1	*LM 16078	98 Guard Assembly	1	*LM 01722	41 Bolt-5/16-18 x 1	1	LM 09219	72 3/8-16 x 2-1/2	8
LM 16063	63 Spindle Assembly	1	*LM 16079	43 Strap-pulley	1	LM 01724	55 3/8-16 x 1-5/16	1	LM 09219	77 5/16-18 x 1-1/4	1
LM 16063	67 Support Assembly	1	*LM 16079	56 Wheel & Tire	2	LM 01727	53 Washer	1	LM 09219	80 5/16-24 x 5/8	1
LM 16063	79 Hood Assembly	1	*LM 16079	58 Wheel & Tire	2	*LM 01729	77 Washer	2	LM 09221	03 5/16-18 x 3-1/2	1
LM 16064	03 Spacer	1	LM 16079	61 Wheel & Tire	2	*LM 01729	78 Washer	7	LM 09221	10 3/8-16 x 3/4	2
LM 16064	08 Rest-foot (L. H.)	1	*LM 16079	67 "V" Belt	2	*LM 01729	79 Washer	4	LM 09221	25 1/4-20 x 7/8	2
LM 16064	09 Rest-foot (R. H.)	1	*LM 16079	86 Seat	1	*LM 01729	81 Washer	1	*LM 09221	32 Nut-3/8-24	1
LM 16064	12 Muffler-exhaust	1	*LM 16080	37 Rod	1	*LM 01729	82 Washer	1	LM 09221	92 Washer-flat	1
LM 16064	30 Clip-cable	2	*LM 16080	83 Panel Assembly	1	LM 01742	74 Washer-thrust	1	LM 09226	11 Washer	2
LM 16064	31 Shaft Assembly	2	*LM 16080	89 Support Assembly	1	LM 09012	71 1/4-20 x 3/4	1	LM 09227	11 Washer-#10	6
LM 16064	45 Bearing-sleeve	2	*LM 16081	06 Support Assembly	1	LM 09028	70 Screw-set	1	LM 09227	55 Washer-flat	2
LM 16064	47 Panel-side (L. H.)	1	LM 16081	08 Frame Assembly	1	LM 09057	59 1/4-20 x 1/4	1	LM 09228	54 5/16 x 5/8	1
LM 16064	48 Panel-side (R. H.)	1	*LM 16081	22 Sheave	1	LM 09077	27 1/4-20 x 5/8	6	LM 09228	58 Nut-5/16-18	6
LM 16064	49 Rod-shift	2	*LM 16081	23 Sheave	1	LM 09077	29 5/16-18 x 1-1/4	2	LM 09230	85 5/16-18 x 1/2	2
LM 16064	61 Cover Assembly	1	*LM 16081	27 Retainer Assy.	1	LM 09077	31 3/8-16 x 1	5	LM 09232	12 Washer-#10	1
LM 16064	69 Spacer-pulley	2	*LM 16081	46 Decal-instrument	1	LM 09081	27 3/8-16 x 3/4	11	LM 09232	32 3/8-16 x 1	1
LM 16064	77 Arm-foot	3	*LM 16081	48 Decal-caution	1	LM 09082	95 1/4-20 x 1/2	1	*LM 09233	00 Washer-5/16	8
LM 16064	78 Rod-clutchhand	2	*LM 16081	55 Decal-quadrant	1	LM 09117	12 5/16-18 x 5/16	10	LM 09233	58 Nut-1/4-20	14
LM 16065	01 Gear-steering	1	*LM 16081	56 Decal	3	LM 09160	19 1/4-20 x 3/4	4	LM 09233	62 Nut-5/16-18	4
LM 16065	03 Axle Assembly	1	*LM 16081	93 Hose-fuel	2	LM 09160	79 10-24 x 3/8	5	LM 09234	28 Nut-3/8-16	22
LM 16065	10 Spacer	1	LM 16081	95 Rod Assembly	1	LM 09164	31 5/16-18 x 1	20	LM 09236	83 3/8-16 x 3/4	4
LM 16065	48 Link-speed	3	*LM 16082	02 Plate-safety	1	LM 09164	32 7/16-14 x 1-1/4	2	LM 09237	35 10 x 3/8	4
LM 16065	51 Lever Assembly	1	*LM 16082	03 Decal-instrument	1	LM 09166	08 7/16-14 x 1-1/2	5	LM 09240	58 Nut-7/16-14	4
LM 16065	53 Rod-latch	1	*LM 16082	50 Bracket-spring	1	LM 09166	09 7/16-14 x 1-3/4	2	LM 09243	56 3/8-16 x 1/2	4
LM 16065	54 Pulley	1	*LM 16082	84 Transmission	1	LM 09166	21 Nut-10-24	6	LM 09243	58 Washer-flat	1
LM 16065	67 Fork-shift	1	LM 16082	85 Transmission	1	LM 09166	22 Nut-1/4-20	13	LM 09244	33 Nut-5/16-18	1
LM 16065	68 Joint-ball	1	*LM 16082	98 Plate-safety	1	LM 09169	50 Nut-3/8-16	33	LM 09246	07 Washer-flat	2
LM 16066	09 Plate-side	1	*LM 16082	99 Decal	1	LM 09169	51 Nut-1/2-13	4	LM 09248	56 5/16-18 x 1/2	7
LM 16066	11 Arm Assembly	1	*LM 16083	04 Support-belt	1	LM 09169	64 Washer-1/4	14	LM 09250	03 1/4-20 x 1/2	14
LM 16066	12 Lever Assembly	1	*LM 16083	08 Retainer Assy.	1	LM 09169	65 Washer-3/8	51	LM 09254	76 Nut-7/16-14	1
LM 16066	15 Rod Assembly	1	*LM 16083	09 Hub-pulley	1	LM 09169	66 Washer-1/2	6	LM 09261	50 Screw-hex	2
LM 16066	16 Molding-dash	1	*LM 16083	10 Spacer	3	LM 09172	31 5/16-18 x 1/2	3	LM 09262	67 10-24 x 5/8	1
LM 16066	36 Draw Bar Assy.	1	*LM 16083	17 Lever Assembly	1	LM 09173	56 Washer-5/16	69	LM 09274	29 1/4-20 x 5/8	6
LM 16066	38 Draw Bar Assy.	1	*LM 16083	22 Pulley-front	1	LM 09173	65 Washer-#10	1	LM 09286	36 Washer-9/16	1
LM 16066	41 Spacer	2	LM 16083	95 Spring-idler	1	LM 09173	72 Nut-5/16-18	51	LM 09286	96 3/8-16 x 1	2
LM 16066	42 Spacer	2	*LM 16084	97 Plate-safety	1	LM 09173	77 Washer-plain	9	LM 09287	45 1/4-20 x 3/8	4
LM 16066	49 Spacer	1	*LM 16085	21 Support-switch	1	LM 09173	78 Washer-3/8	26	LM 09287	11 7/16-14 x 5/8	4
LM 16066	53 Tank-fuel	1	*LM 16085	22 Clip-switch	1	LM 09173	97 5/16-18 x 3/4	12	LM 09287	31 Nut-3/8-16	1
LM 16066	55 Strap-fuel tank	2	*LM 16085	35 Connector	4	LM 09174	00 3/8-16 x 1-1/4	5	LM 09287	45 1/4-20 x 1-1/4	2
LM 16066	62 Arm Assembly	1	*LM 16086	21 Rod-pulley	1	LM 09174	02 3/8-16 x 2	1	LM 09287	75 1/4-20 x 1-1/4	1
LM 16066	77 Pad-foot (R. H.)	1	*LM 16086	24 Shaft Assembly	1	LM 09174	03 7/16-14 x 2	1	LM 09288	04 1/4-20 x 3/8	2
LM 16066	78 Pad-foot (L. H.)	1	*LM 16086	25 Decal	2	LM 09174	07 3/8-24 x 1-1/8	1	LM 09296	98 5/16-18 x 5/16	2
LM 16066	89 Throttle	1	*LM 16086	32 Rod-drag	1	LM 09174	15 Nut-10-32	1	LM 16013	85 5/16-18 x 1-1/2	1
LM 16067	64 Harness Assy.	1	*LM 16087	02 Pin	4	LM 09174	21 Nut-3/8-16	3	LM 16024	03 3/8-16 x 1-1/2	1
LM 16067	65 Wire Assembly	1	LM 16104	04 Spacer	1	LM 09174	52 10-32 x 1/2	3	LM 16024	04 3/8-16 x 1	1
LM 16067	66 Harness Assy.	1	LM 16104	56 Bushing	12	LM 09176	42 Washer-5/16	10	LM 16040	97 1/4-20 x 5/8	6
LM 16067	68 Lead-switch	1	LM 16105	90 Brake-sheave	1	LM 09180	16 Nut-hex	1	LM 16054	96 3/8-24 x 5/16	1
LM 16067	69 Harness-switch	1	LM 16107	03 Spring	1	LM 09181	99 Washer-7/16	68	LM 16054	97 7/16-14 x 4	2
LM 16068	17 Rod Assembly	1	LM 80210	10 Collar-set	3	LM 09182	32 7/16-14 x 1	4	LM 16066	91 Washer-special	1
LM 16068	23 Clip-spring	2	LM 80610	12 Spacer	3	LM 09182	13 Nut-7/16-14	14	LM 16070	21 Nut-3/4-16	5
LM 16068	99 Coil Assembly	1	LM 80610	48 Ring-retaining	2	LM 09184	30 Washer-5/16	18	LM 16076	08 Washer-insulation	2
LM 16069	00 Hub Assembly	1	LM 81610	45 Clip-spring	1	LM 09184	47 Pin-cotter	9	*LM 16080	80 Bolt-shoulder	1
LM 16069	03 Rod Assembly	2	LM 82611	00 Bolt-hub	10	LM 09184	48 Pin-cotter	2	LM 80610	12 Washer	3
LM 16070	25 Arm Assembly	1	FASTENING PARTS			LM 09184	51 Pin-cotter	1			
LM 16070	26 Lever Assembly	1	LM 01050	50 Washer	1	LM 09191	99 Washer-7/16	2			

HOMELITE®

A Textron
DIVISION

PORT CHESTER, NEW YORK, U.S.A. 10573