

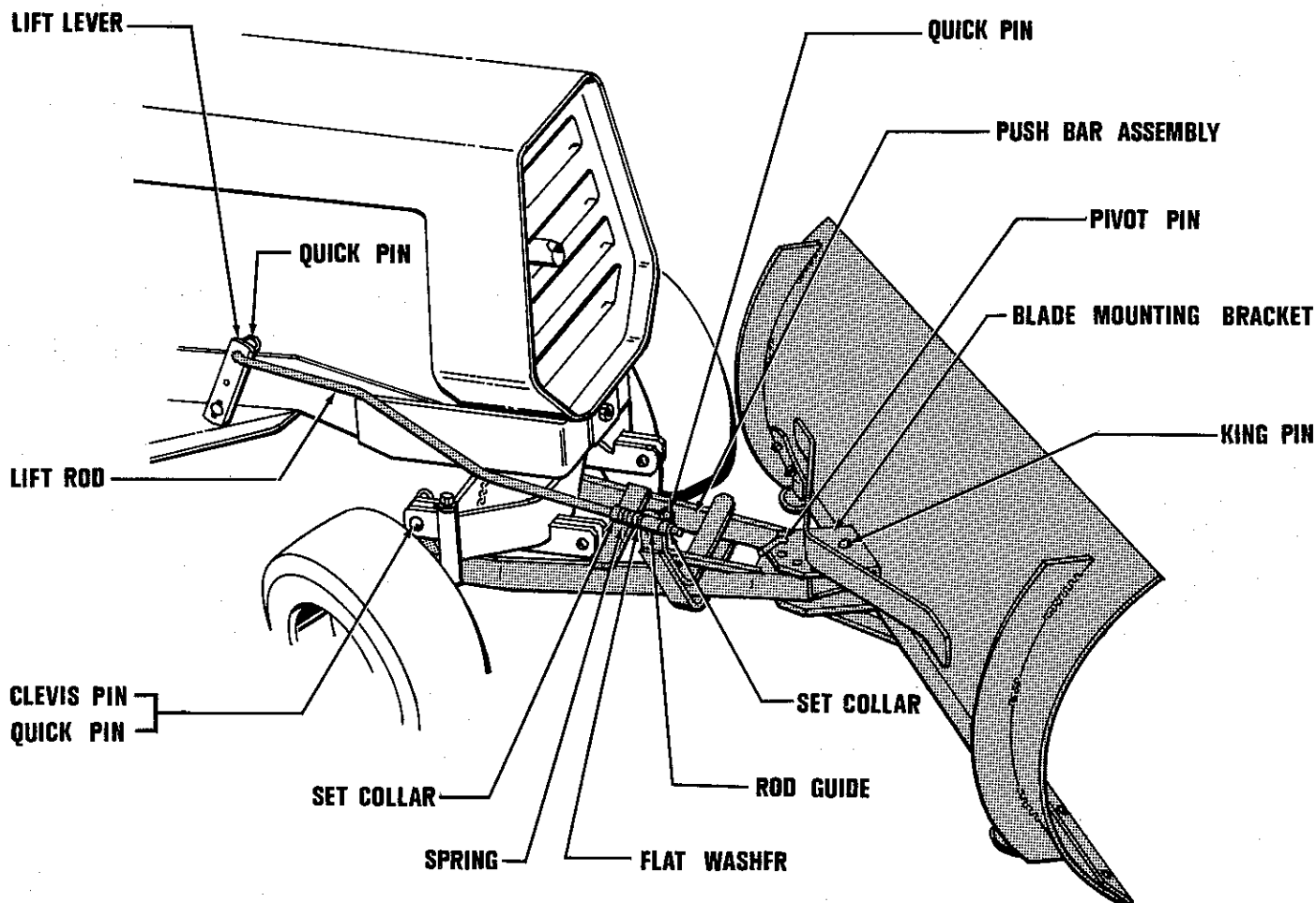
HOMELITE®

INSTRUCTIONS & PARTS LIST

42" FRONT BLADE

No. LM-16001-68

for T-10, T-12, & T-15 TRACTORS



ASSEMBLY

1. Secure the push bar assembly to the blade using a king pin and quick pin. Place the pivot pin through the bracket on the blade assembly and push bar assembly.
2. Position the push bar assembly under the front of the tractor. Attach the push bar to the rear holes in the tractor frame extensions using a clevis pin and quick pin on each side.
3. Place the lift lever in the forward most position. Attach the hooked end of the lift rod to the upper hole in the lift lever and secure with a quick pin. Adjust the set collars on the spring end so the dog on the rod guide will fit in the hole in the lift bracket on the push bar assembly. Secure with a quick pin. Adjust the rear set collar so that it is up against the spring. This assembly will absorb most of the shock should you strike an object when plowing and help prevent serious damage to the tractor.

ADJUSTMENTS

Alternate holes are provided in the blade to permit adjustment of the shoe assemblies for various types of ground surfaces to be plowed. The blade should be raised when plowing gravel drives or walks. Lower the blade when plowing asphalt or concrete drives and walks.

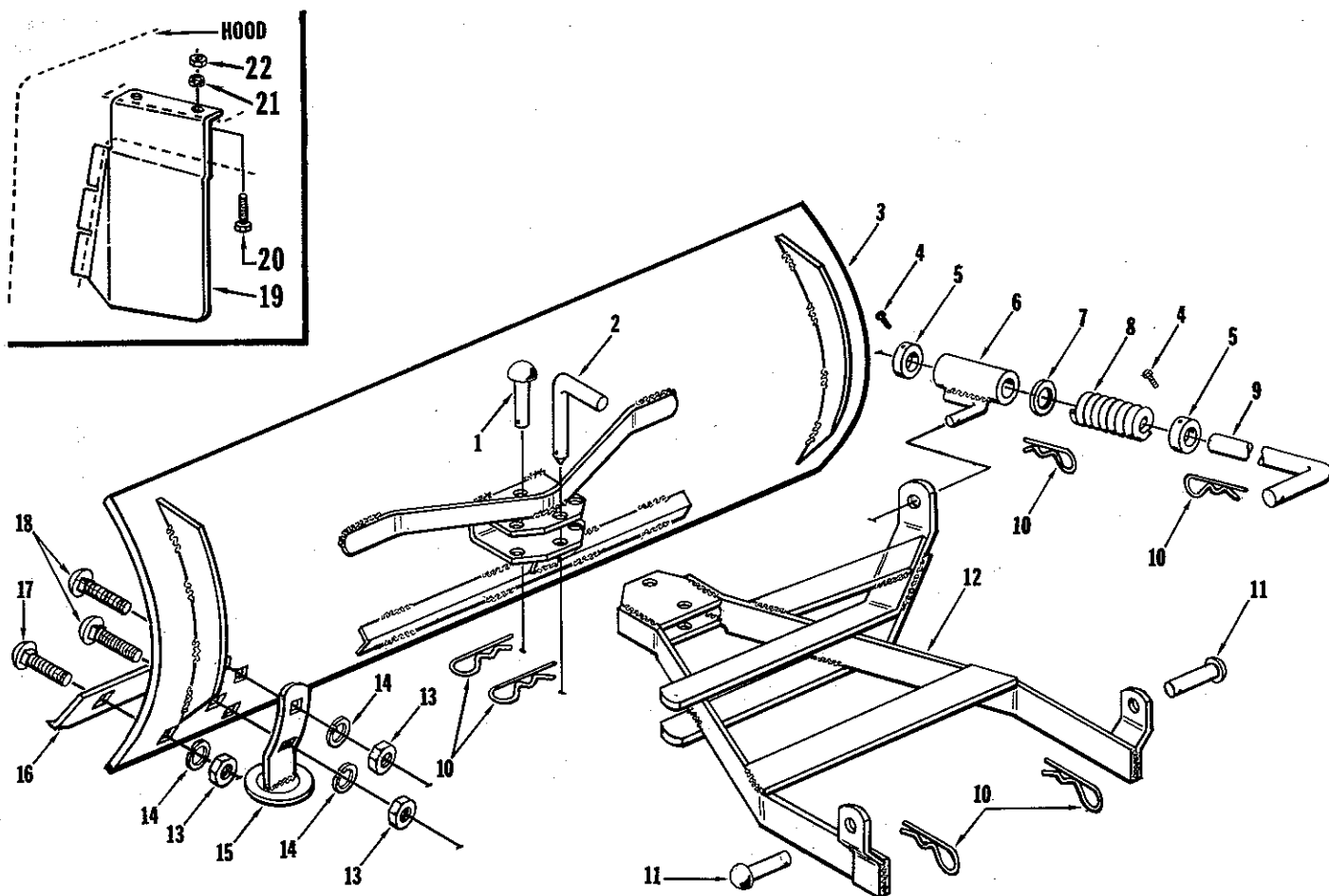
The angle of the blade is adjustable to permit plowing to either the right or left. Remove the pivot pin and angle the blade to the desired position. Replace the pin in the hole to secure angle of the blade.

RECOMMENDED EQUIPMENT

Front Wheel Weights	LM-09904-49
Rear Wheel Weights	LM-09907-08
Tire Chains:	
T-10	LM-09903-15
T-12, T-15	LM-09905-23

NOTE: Loose mounting of tire chains will make them self-cleaning.

42 FBT



No.	Description	Part No.	Qty.	No.	Description	Part No.	Qty.
1	PIN-king	LM-16036-02	1	15	SHOE ASSEMBLY	LM-01070-24	2
2	PIN-pivot	LM-16036-01	1	16	PLATE-wear	LM-01070-45	1
3	BLADE ASSEMBLY-42"	LM-01070-47	1	17	BOLT-rd.hd., 3/8-16 x 3/4	LM-09221-10	6
4	SCREW-set, 5/16-18	LM-09287-09	2	18	BOLT-rd.hd., 3/8-16 x 1	LM-09232-32	4
5	COLLAR-set	LM-80310-07	2	19	DEFLECTOR-snow	LM-16074-23	1
6	GUIDE ASSEMBLY-rod	LM-01716-79	1	20	SCREW-cap, hex hd., 1/4-20 x 1/2	LM-09082-95	2
7	WASHER-flat, 17/32 x 1-1/4	LM-09169-60	1	21	WASHER-lock, 1/4	LM-09169-64	2
8	SPRING	LM-01710-11	1	22	NUT-hex, 1/4-20	LM-09166-22	2
9	ROD-lift	LM-16066-35	1		DECAL-shield	LM-01702-52	1
10	PIN-quick, 1/8 dia.	LM-01067-88	5		Accessories		
11	PIN-hitch	LM-01180-53	2				
12	BAR ASSEMBLY-push	LM-16066-28	1				
13	NUT-hex, 3/8-16	LM-09169-50	10		PAINT-blue, 14oz. spray can	LM-16076-89	
14	WASHER-lock, 3/8	LM-09169-65	10		PAINT-black, 12oz. spray can	22772	

ALWAYS FURNISH MODEL AND SERIAL NUMBER WHEN ORDERING PARTS.

HOMELITE®

A **Textron**
DIVISION

PRINTED IN U. S. A.

PORT CHESTER, NEW YORK, U.S.A. 10573

E2278EZ