

HOMELITE®

INSTRUCTIONS & PARTS LIST

42" FRONT BLADE No. LM-990932 for T-7 & T-8 Tractors

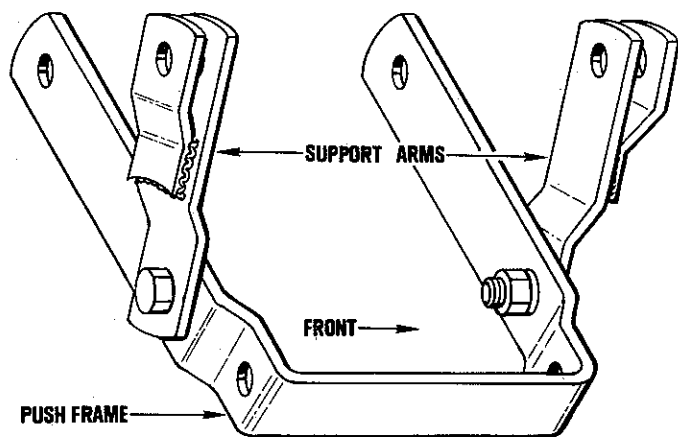
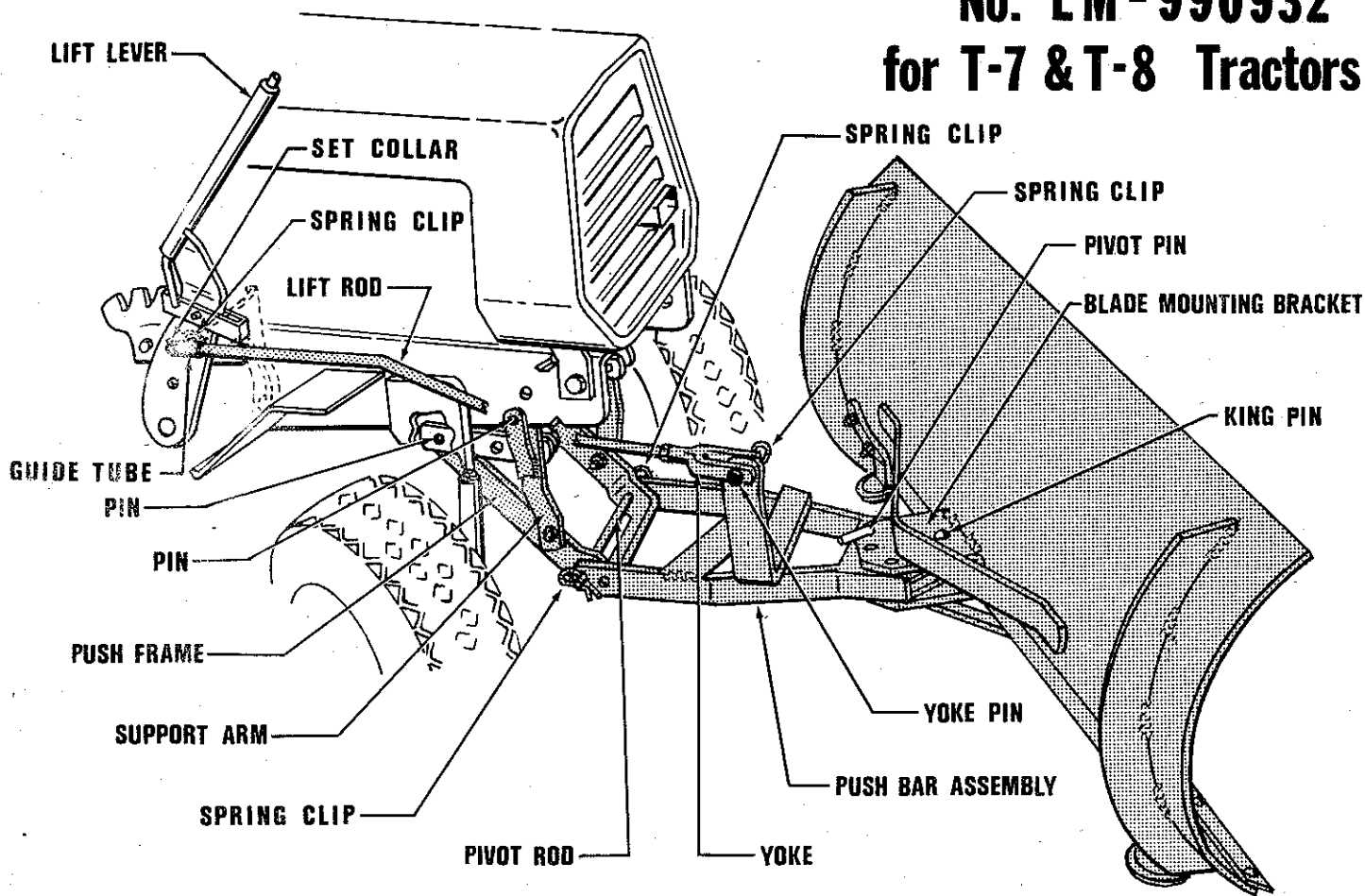


Figure 1

ASSEMBLY

1. Fasten the two support arm assemblies to the push frame with a capscrew, lockwasher and hex nut (see fig. 1). Do not tighten completely until after the combined assemblies are installed on the tractor.

2. Attach the push frame to the rear holes of the front mounting brackets on the tractor with a pin and spring clip on each side. Mount the support arm assemblies to each side of the tractor frame (see illustration) with a pin and spring clip on each side. Now tighten the nuts securing the support arm assemblies to the push frame.
3. Slide the pivot rod through the push bar assembly and the push frame and secure with a spring clip on each end.
4. Slide the front of the push bar assembly into the mounting bracket on the back of the 42" blade. Secure with the king pin and spring clip in the forward hole. Place the pivot pin the rear hole.
5. Slide the guide tube and the set collar onto the unthreaded end of the lift rod and tighten the set collar with the set screw. Attach a hex nut and the yoke to the threaded end of the lift rod and connect to the upright arm on the push bar assembly with the yoke pin and a spring clip. For ease of attachment place the lift lever in the down position. Push pin side of guide tube through the hole in the lift lever and secure with a spring clip.

PART NO. 24715-4

Supersedes No. 24715

6. The shoe assemblies are to be mounted to the blade with four (two each skid) 3/8-16 x 1 carriage bolt, lock washers and hex nuts.

The angle of the blade is adjustable to permit plowing to either the right or left. Remove the pivot pin and angle the blade to the desired position. Replace the pin in the hole to secure angle of the blade.

OPERATION

Alternate holes are provided in the blade to permit adjustment of the shoe assemblies for various types of ground surfaces to be plowed. The blade should be raised when plowing gravel drives or walks. Lower the blade when plowing asphalt or concrete drives and walks.

Recommended Equipment

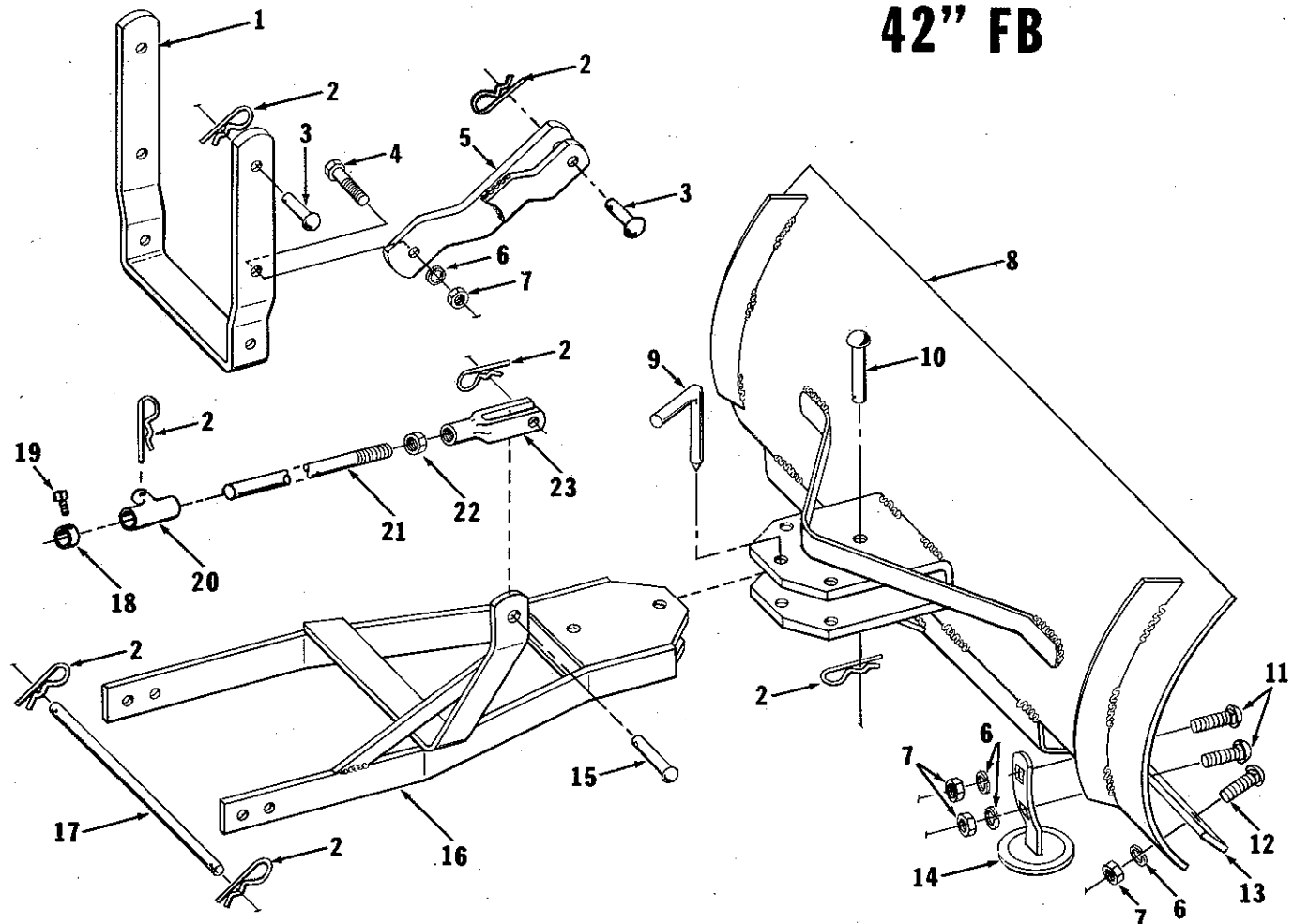
Wheel Weights LM-09904-49

Tire Chains

T-7 LM-09906-93

T-8 LM-09903-01

Note: Loose mounting of chains will make them self cleaning.



No.	Description	Part No.	Qty.
1	FRAME-push	LM-16065-47	1
2	CLIP-spring	LM-81610-45	9
3	PIN	LM-01180-53	4
4	SCREW-hex hd. cap, 3/8-16 x 1-1/4	LM-09174-00	2
5	ARM-support	LM-16065-46	2
6	WASHER-lock, 3/8	LM-09169-65	12
7	NUT-hex, 3/8-16	LM-09169-50	12
8	BLADE-42"	LM-01070-47	1
9	PIN-pivot	LM-16036-01	1
10	PIN-king	LM-16036-02	1
11	BOLT-carriage, 3/8-16 x 1	LM-09232-32	4
12	BOLT-carriage, 3/8-16 x 3/4	LM-07020-03	6
13	PLATE-wear	LM-01070-45	1

No.	Description	Part No.	Qty.
14	SHOE	LM-01070-24	2
15	PIN-yoke	LM-01543-05	1
16	BAR-push	LM-16065-79	1
17	ROD-pivot	LM-01070-89	1
18	COLLAR-set	LM-83010-42	1
19	SCREW-set, 5/16-18 x 3/8	LM-09287-09	1
20	TUBE-guide	LM-01704-36	1
21	ROD-lift	LM-01767-27	1
22	NUT-hex, 1/2-20	LM-09194-23	1
23	YOKE-end adj.	LM-01576-31	1

Accessories

PAINT-black, 12 oz. spray can

22772

ALWAYS FURNISH MODEL AND SERIAL NUMBER WHEN ORDERING PARTS.



A **Textron** DIVISION, PORT CHESTER, N.Y. 10573