

Mfr's. No. 169

# HOMELITE®

## 46" Angle Dozer No. LM-1600I-69

### Assembly Instructions and Parts List

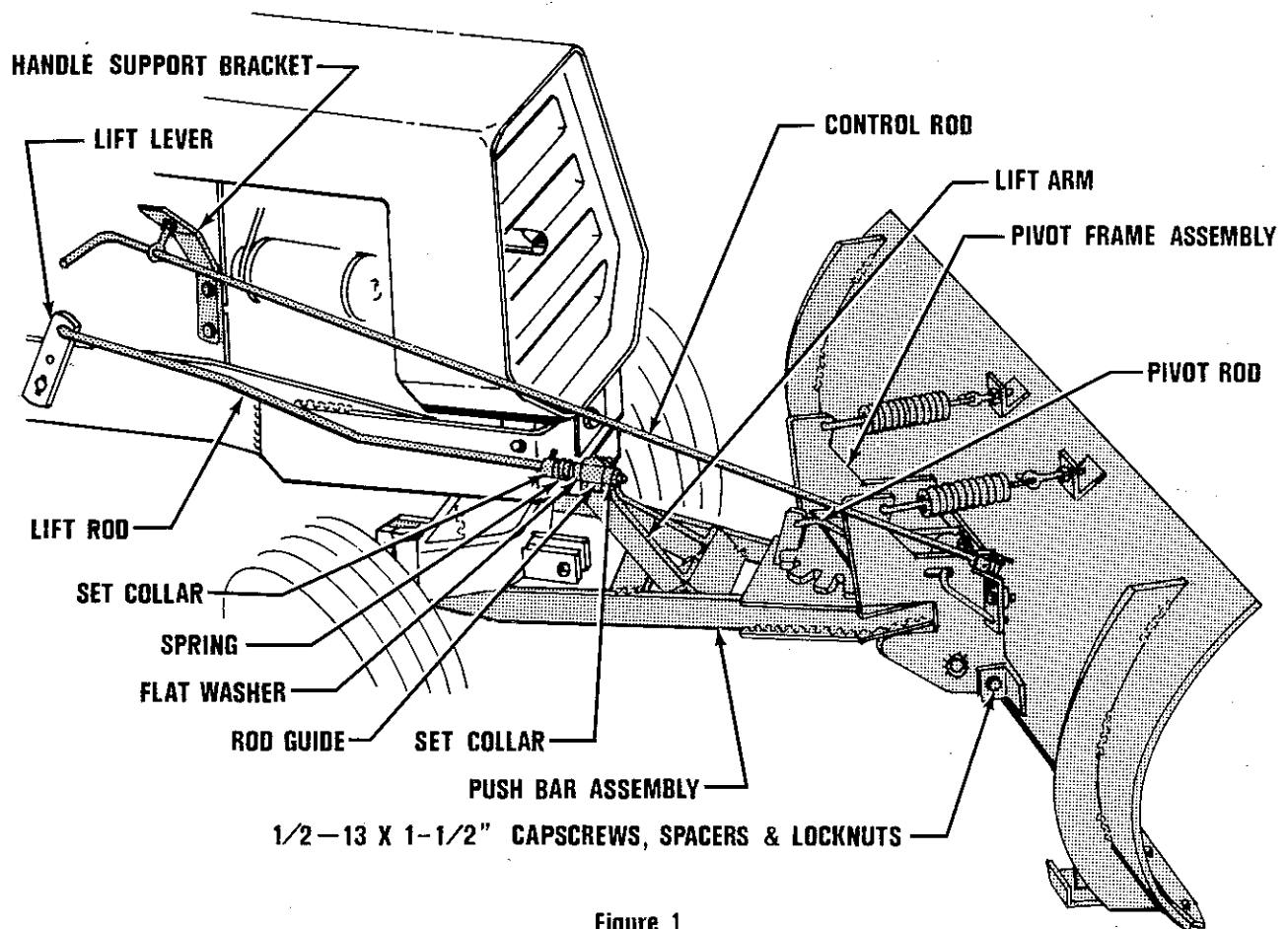
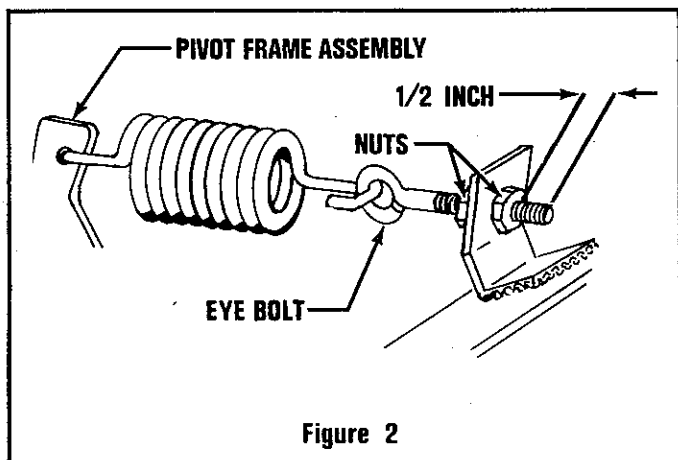


Figure 1

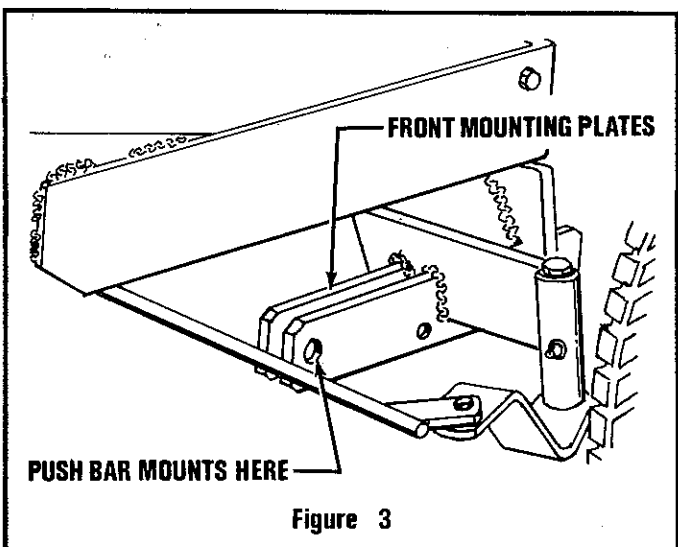
for T-10, T-12, T-15 & T-16 Tractors

# Assembly

1. Attach the pivot frame assembly to the blade using two 1/2-13 x 1-1/2" capscrews, two spacers and two 1/2-13" locknuts. (Figure 1.)
2. Connect the top of the pivot frame assembly to the blade with the two eye bolts and two springs provided. Allow 1/2" of thread to show through the nuts. (Figure 2.)



3. Mount the push bar assembly to the rear hole of the tractor front mounting plates using two hitch pins and two quick pins. (Figure 3.)



4. The handle support bracket is mounted on the side panel on the right side of the tractor with two 1/4-20 x 5/8" capscrews (these replace the original screws) and two 1/4" lockwashers.

5. Move the tractor lift mechanism to the down position. Place the hooked end of the lift rod through the hole in the tractor lift lever. Secure with a quick pin. Adjust the set collars on the spring end so the dog on the rod guide will fit in the hole in the lift arm on the push bar assembly. Adjust the rear set collar so that it touches the spring. This assembly will absorb most of the shock should you strike an object while plowing and help prevent serious damage to the tractor.

6. Insert the pivot rod through its brackets and secure with a cotter pin through each end.

## Operation

There are five operating positions for this blade. The positions can be changed by the operator without leaving his seat. Turn the control rod counterclockwise to unlatch the blade. Push or pull the control rod to move the blade to the desired position. For ease of changing positions, raise the blade slightly from the ground.

The shoe assemblies are slotted to permit adjustment for various types of ground to be plowed. The blade should be set high when plowing gravel drives and walks. Lower the blade when plowing asphalt or concrete drives and walks. Increased height adjustment can be made as follows:

- a) Manual Lift - by repositioning the stop pin in the lift lever quadrant.
- b) Electric Lift - by lowering the blade only as far as desired.

The snow deflector should be installed whenever the tractor is to be used in cold weather. Remove the deflector for warm weather operation. The deflector mounts on the left side of the tractor hood.

The wear plate on the blade is reversible. Should it become worn, it may be removed, reversed and reinstalled.

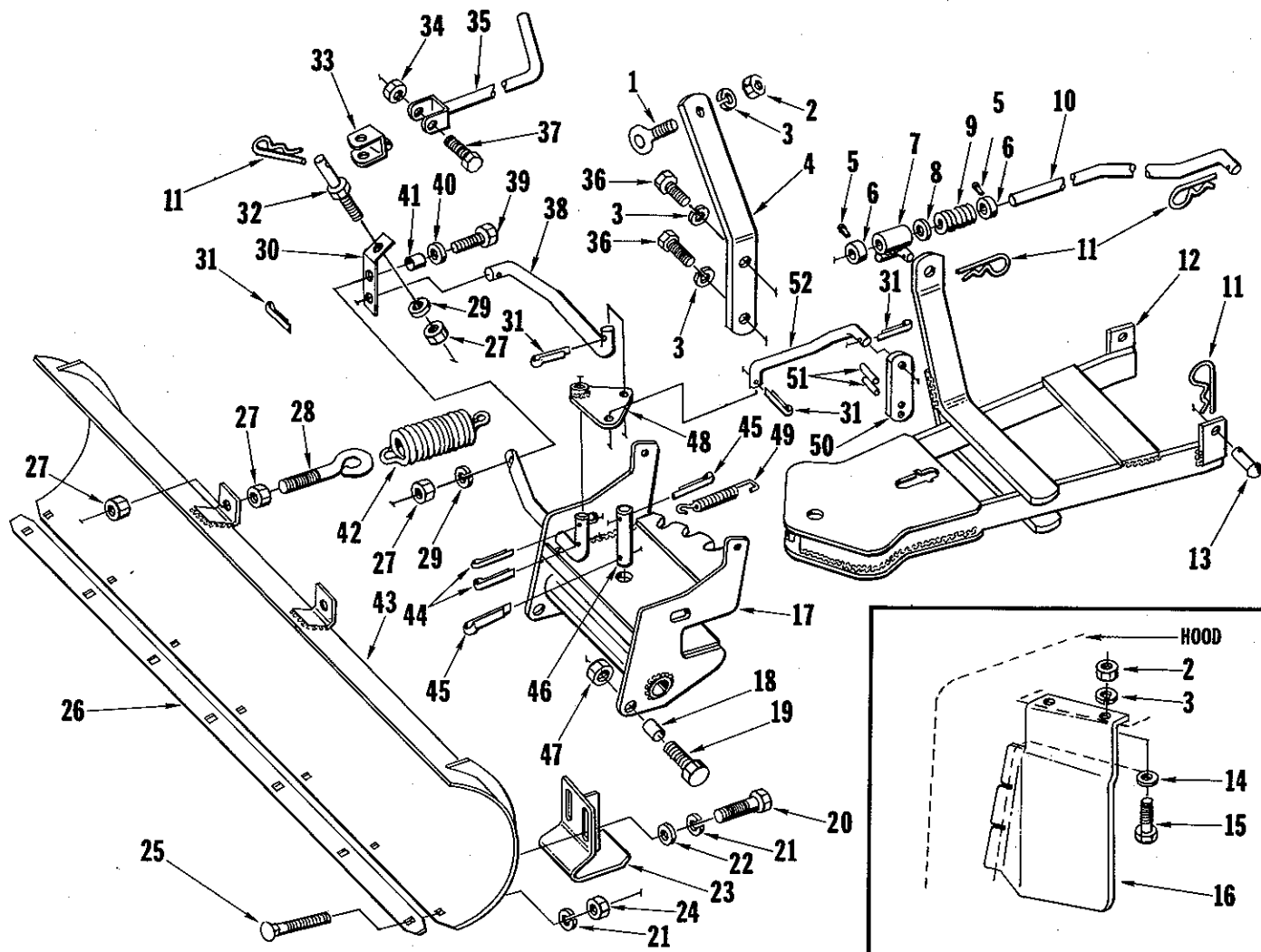
## Lubrication

Lubricate all joints where rods enter holes. Also lubricate all pivot points. Periodic lubrication will assist in ease of operation.

### Recommended Equipment

Front Wheel Weights	LM 09904 49
Rear Wheel Weights	LM 09907 08
Tire Chains:	
T-10	LM 09903 15
T-12, T-15	LM 09905 23

NOTE: Loose mounting of chains will make them self-cleaning.



No.	Description	Part No.	Qty.	No.	Description	Part No.	Qty.
1	BOLT-eye	LM-01721-62	1	29	WASHER-lock, 5/16	LM-09173-56	2
2	NUT-hex, 1/4-20	LM-09166-22	3	30	ARM-pivot	LM-01071-19	1
3	WASHER-lock, 1/4	LM-09169-64	5	31	PIN-cotter, 3/32 x 3/4	LM-09184-47	4
4	BRACKET-handle support	LM-16066-46	1	32	STUD-pivot	LM-01071-20	1
5	SCREW-set, 5/16-18 x 3/8	LM-09287-09	2	33	FORK ASSEMBLY	LM-01061-31	1
6	COLLAR-set	LM-80310-07	2	34	NUT-hex lock, 5/16-18	LM-09233-62	1
7	GUIDE ASSEMBLY-rod	LM-01716-79	1	35	ROD ASSEMBLY-control	LM-16074-72	1
8	WASHER-flat, 17/32 x 1-1/4	LM-09169-60	1	36	SCREW-cap, 1/4-20 x 5/8	LM-09077-27	2
9	SPRING	LM-01710-11	1	37	SCREW-cap, 5/16-18 x 1-1/2	LM-09199-33	1
10	ROD-front lift	LM-16066-35	1	38	ROD-pivot	LM-01071-18	1
11	PIN-quick, 1/8	LM-01067-88	5	39	SCREW-cap, 5/16-18 x 1	LM-09164-31	1
12	BAR ASSEMBLY-push	LM-16066-30	1	40	WASHER-flat, 5/16	LM-09176-42	1
13	PIN-hitch	LM-01180-53	2	41	SPACER	LM-01561-50	1
14	WASHER-flat, 1/4	LM-09173-77	2	42	SPRING	LM-01011-26	2
15	SCREW-cap, 1/4-20 x 1/2	LM-09082-95	2	43	BLADE ASSEMBLY-46"	LM-01070-96	1
16	DEFLECTOR-snow	LM-16074-23	1	44	PIN-cotter, 1/8 x 1	LM-09184-52	2
17	FRAME ASSEMBLY-pivot	LM-01740-54	1	45	PIN-cotter, 3/16 x 1-1/4	LM-09193-14	2
18	SPACER	LM-01050-51	2	46	PIN-pivot	LM-01740-66	1
19	SCREW-cap, 1/2-13 x 1-1/2	LM-09203-28	2	47	NUT-hex lock, 1/2-13	LM-09221-34	2
20	SCREW-cap, 3/8-16 x 3/4	LM-09081-27	4	48	PLATE ASSEMBLY-pivot	LM-01071-16	1
21	WASHER-lock, 3/8	LM-09169-65	11	49	SPRING-latch	LM-01071-35	1
22	WASHER-flat, 3/8	LM-09173-78	4	50	LATCH	LM-01740-73	1
23	SHOE ASSEMBLY	LM-01071-06	2	51	PIN-roll, 7/32 x 1	LM-09214-69	2
24	NUT-hex, 3/8-16	LM-09169-50	7	52	ROD-latch	LM-01071-36	1
25	BOLT-carriage, 3/8-16 x 1	LM-09232-32	7		DECAL-deflector	LM-01702-52	1
26	PLATE-wear	LM-01071-05	1		PAINT-blue, 14 oz. spray can	LM-16076-89	
27	NUT-hex, 5/16-18	LM-09173-72	6		PAINT-black, 12 oz. spray can	22772	
28	BOLT-eye	LM-01071-21	2				

ALWAYS FURNISH MODEL AND SERIAL NUMBER WHEN ORDERING PARTS.

PRINTED IN U.S.A.



E1375EZ