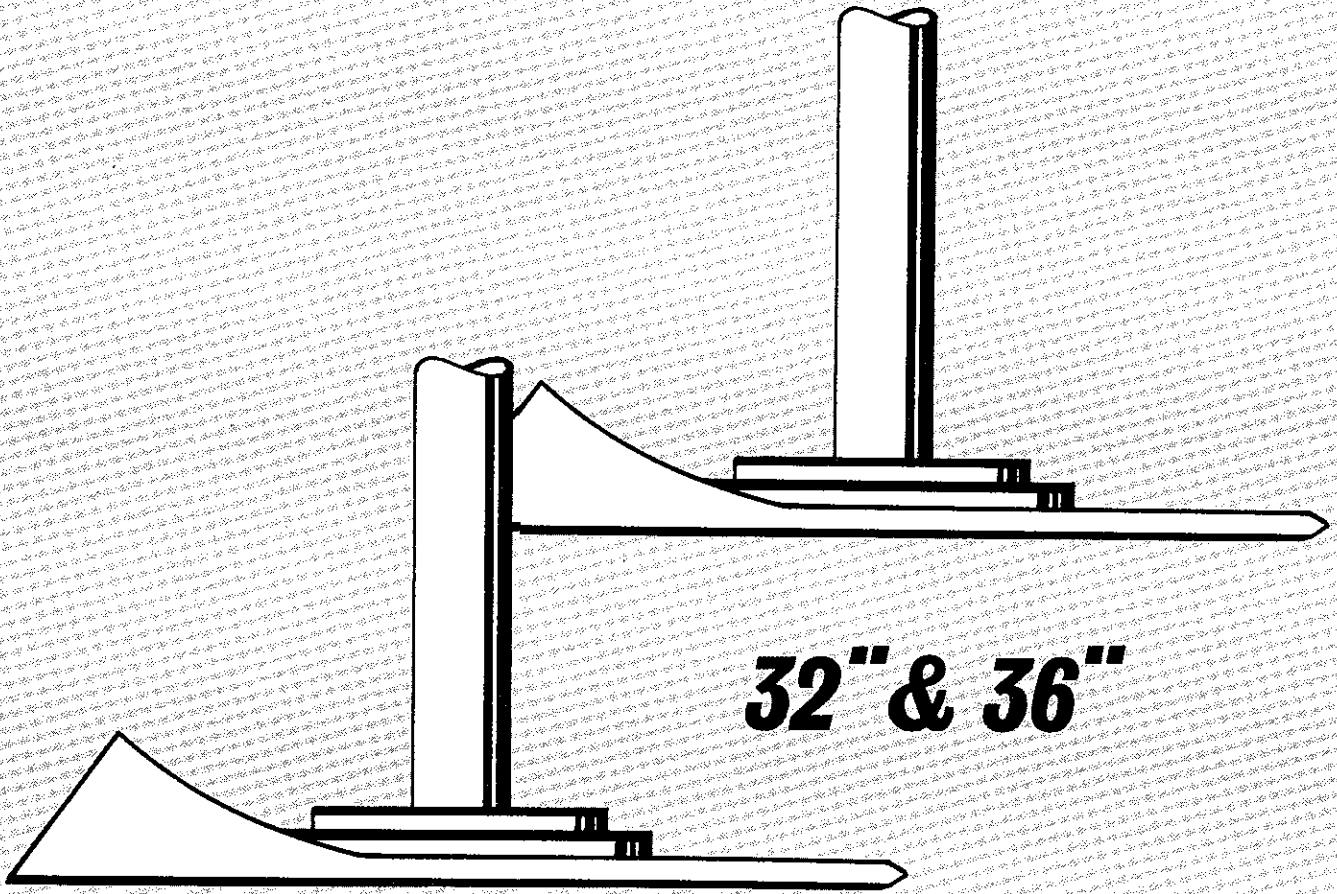


PART NO. 24732-4

**Instructions
& Parts List**

HOMELITE®



32" & 36"

**ROTARY
MOWERS**

PRINTED IN U.S.A.

E2374EZ

Safety □□□

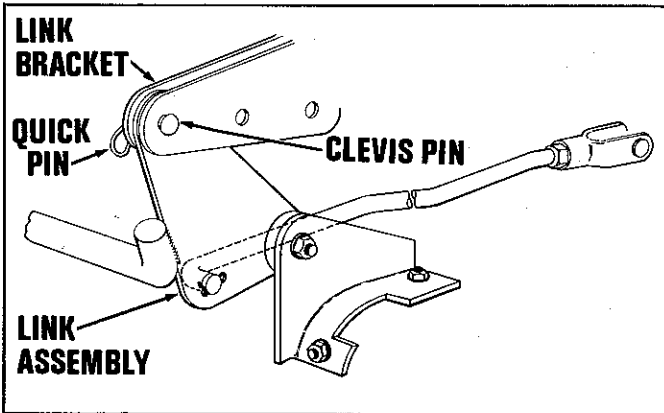
- Know the controls and how to stop quickly—READ THE OWNER'S MANUAL.
- Do not allow children to operate vehicle. Do not allow adults to operate it without proper instruction.
- Do not carry passengers. Keep children and pets a safe distance away.
- Clear work area of objects which might be picked up and thrown.
- Disengage all attachment clutches and shift into neutral before attempting to start engine (motor).
- Disengage power to attachments and stop engine (motor) before leaving operator position.
- Disengage power to attachment(s) and stop engine (motor) before making any repairs or adjustments.
- Disengage power to attachments when transporting or not in use.
- Take all possible precautions when leaving vehicle unattended; such as disengaging power-take-off, lowering attachments, shifting into neutral, setting parking brake, stopping engine and removing key.
- Do not stop or start suddenly when going uphill or downhill. Mow up and down the face of steep slopes; never across the face.
- Reduce speed on slopes and in sharp turns to prevent tipping or loss of control. Exercise extreme caution when changing direction on slopes.
- Stay alert for holes in terrain and other hidden hazards.
- Use care when pulling loads or using heavy equipment.
 - A. Use only approved drawbar hitch points.
 - B. Limit loads to those you can safely control.
 - C. Do not turn sharply. Use care when backing.
 - D. Use counterweight(s) or wheel weights when suggested in owner's manual.
- Watch out for traffic when crossing or near roadways.
- When using any attachments never direct discharge of material toward bystanders nor allow anyone near vehicle while in operation.
- Handle gasoline with care — it is highly flammable.
 - A. Use approved gasoline container.
 - B. Never remove cap or add gasoline to a running or hot engine or fill fuel tank indoors. Wipe up spilled gasoline.
 - C. Open doors if engine is run in garage -- exhaust fumes are dangerous. Do not run engine (motor) indoors.
- Keep vehicle and attachments in good operating condition and keep safety devices in place.
- Keep all nuts, bolts, and screws tight to be sure equipment is in safe working condition.
- Never store equipment with gasoline in the tank inside a building where fumes may reach an open flame or spark.
- Allow engine to cool before storing in any enclosure.
- To reduce fire hazard keep engine free of grass, leaves or excessive grease.
- Vehicle and attachment should be stopped and inspected for damage after striking a foreign object and the damage should be repaired before restarting and operating the equipment.
- Do not change engine governor settings or overspeed engine.
- When using vehicle with mower:
 - (1) Mow only in daylight or in good artificial light.
 - (2) Never make a cutting height adjustment while engine (motor) is running if operator must dismount to do so.
 - (3) Shut engine (motor) off when removing grass catcher and/or unclogging chute.
 - (4) Check blade mounting bolts for proper tightness at frequent intervals.
- Check grass catcher bags frequently for wear or deterioration. Replace with new bags for safety protection.

ATTACHING THE MOWER

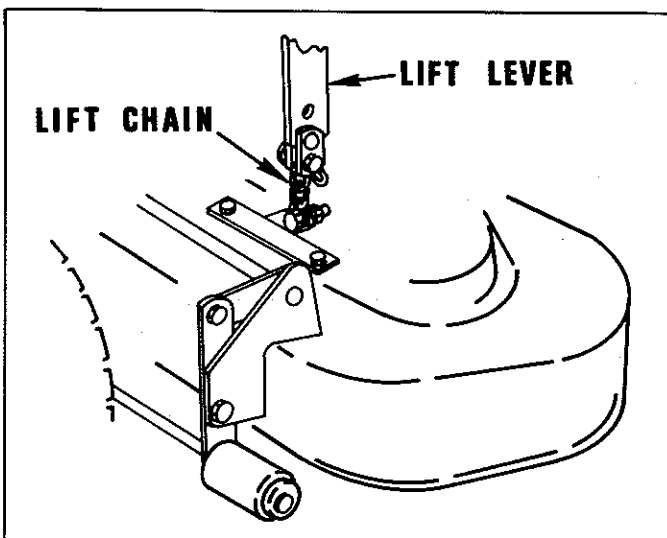
Place the mower drive belt over the pulley on top of the mower housing. Pull the belt toward the front of the mower housing and keeping it tight, adjust the belt stops on top of the shield to within 1/8 inch of the belt.

Park the unit on a level surface and turn the front wheels sharp right. Slide the mower under the left side of the tractor and proceed as follows:

1. Place the mower drive belt over the two PTO idlers on the front of the tractor. Be sure PTO is in Neutral. NOTE: Belt may have to be twisted slightly to enable it to pass between the belt retainers onto the pulley.
2. Feed the belt over the front axle, through the opening in the frame and around the lower engine pulley.
3. Raise the front of the mower housing and secure the mower link assembly to the link brackets on the frame. NOTE: Mount the mower in the forward most holes. The other holes are for mounting other attachments. Secure the link assembly with clevis pins and quick pins.



4. Secure the lift lever mount to the lift lever.



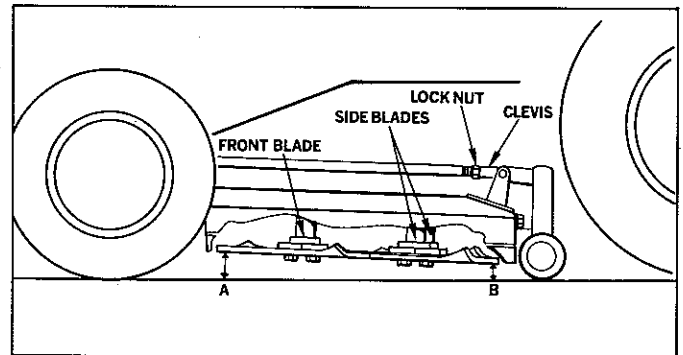
**PRACTICE SAFETY
AT ALL TIMES**

CAUTION: Remove key and disconnect spark plug wire before making the following adjustments.

MOWER ADJUSTMENTS

For proper grass cutting, the Rotary Mowers must be set so the front of the mower is approximately 1/8" to 1/4" higher than the rear. Proceed as follows:

1. Park the unit on a flat level surface. Place the cutting height lever in the uppermost position.



2. Measure the distance at point "A" and point "B". If point "A" is not 1/8" to 1/4" higher than point "B" proceed as follows:

Loosen the locknut on the adjusting rods. Remove the quick pin and clevis pin from each clevis. Rotate each clevis the same amount of turns to obtain a height of 1/8" to 1/4" higher at point "A" than point "B".

NOTE: To raise the front of the mower, turn the clevis clockwise. Be sure to recheck point "B" after obtaining proper height at point "A".

Every mower must be checked and adjusted in accordance with the above instructions prior to operation of the unit.

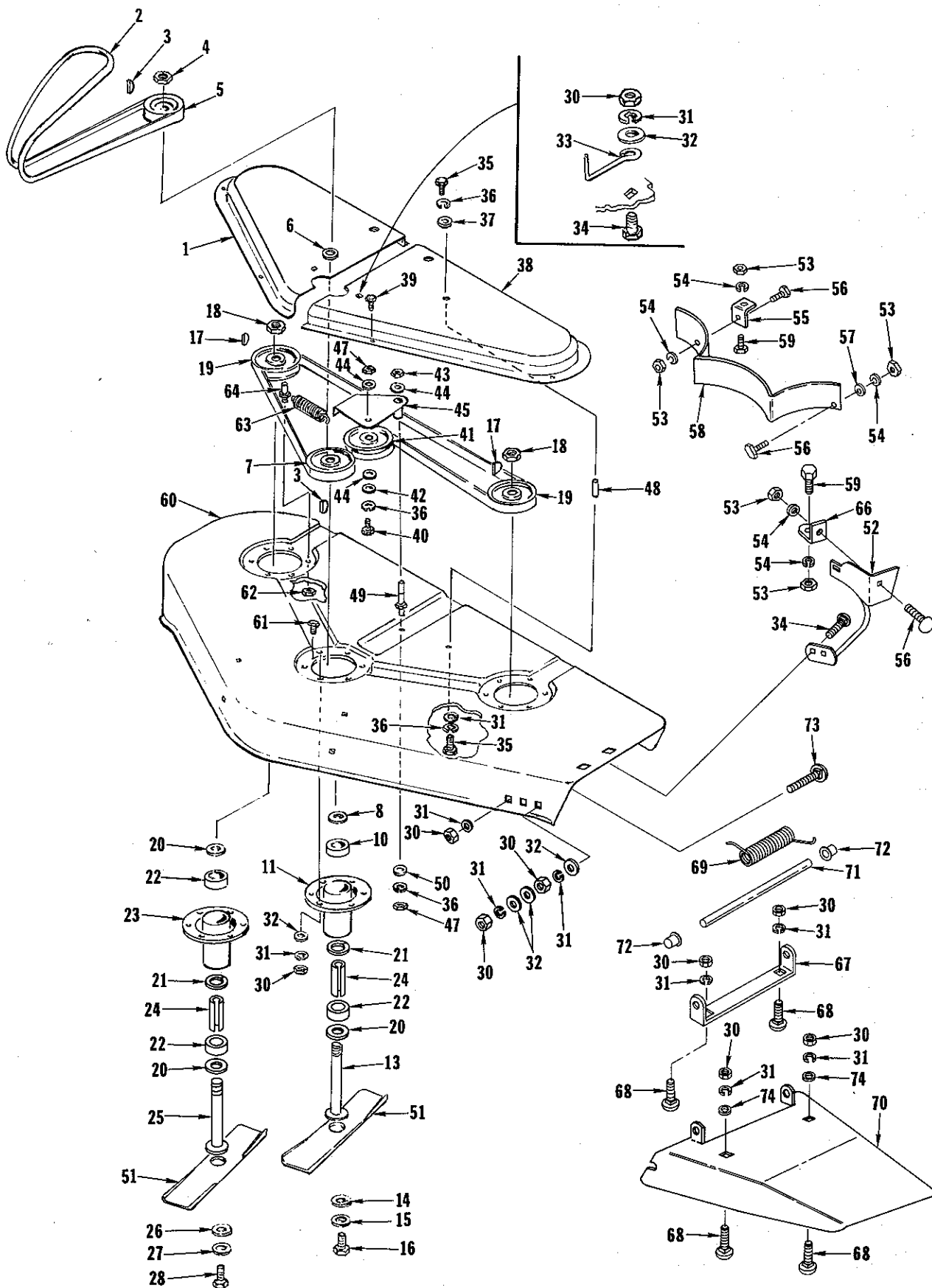
REPLACEMENT PARTS

Replacement parts for your HOMELITE equipment should be purchased from your HOMELITE Dealer. Be prepared to give him the tractor name, model, and the serial number.

USE ONLY HOMELITE BELTS AND BLADES.

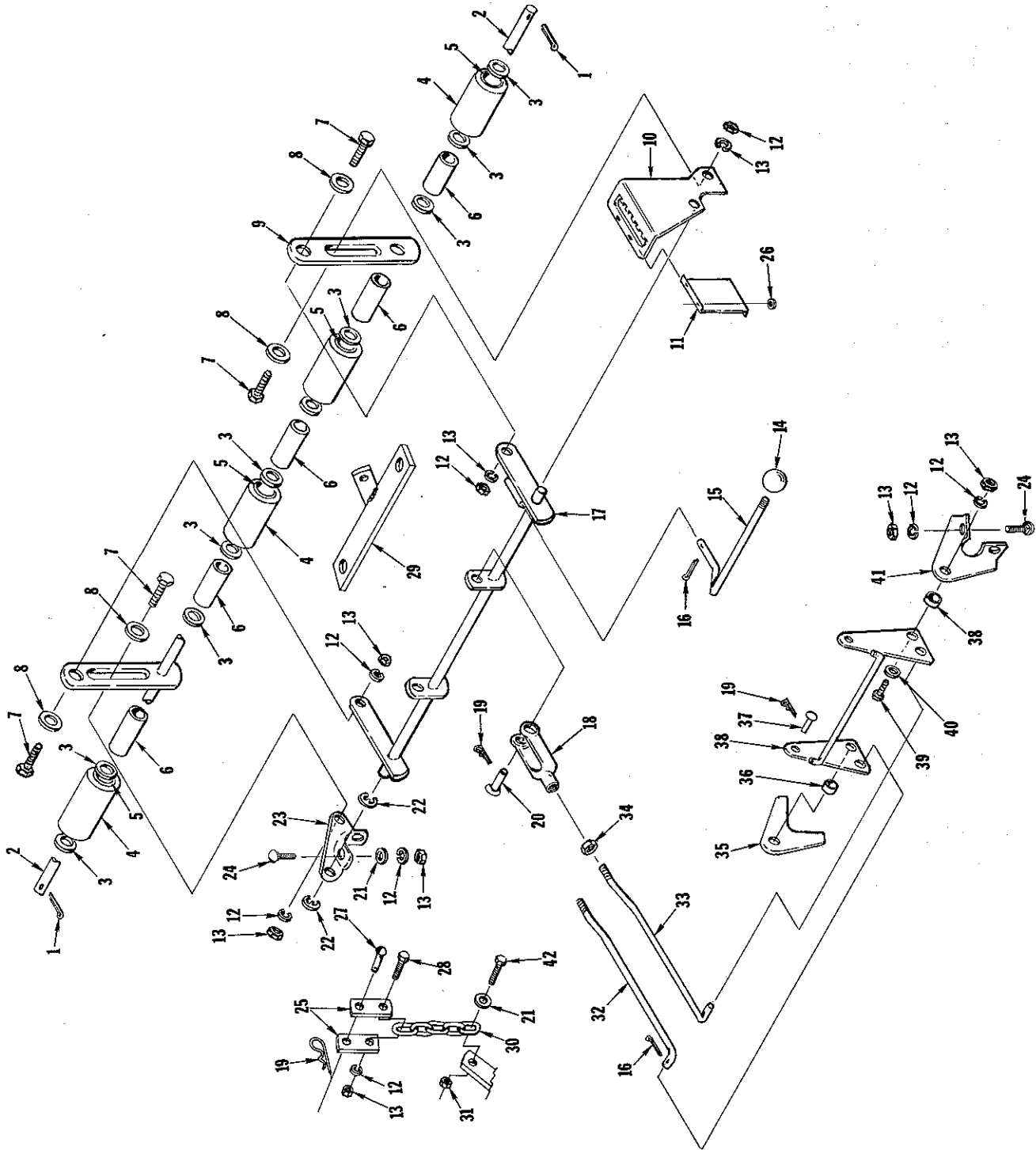
CAUTION: Always check mower for broken parts immediately after striking any solid object. If a blade is bent, it should be replaced rather than straightened and reused. Any broken parts should be replaced. Replacement blades should be ordered only from your HOMELITE dealer.

Housing & Arbors



No.	Description	Part No.	T-7	T-8	Qty.	No.	Description	Part No.	T-7	T-8	Qty.
1	SHIELD-arbor (R. H.)	LM-16068-29	x	x	1	38	SHIELD-arbor (left hand)	LM-16068-30	x	x	1
* 2	BELT-front PTO drive	LM-01764-39	x		1	39	SCREW-hex, Taptite, 1/4-20 x 3/8	LM-09290-00	x	x	8
	BELT-front PTO drive	LM-16015-20		x	1	40	SCREW-hex cap, 3/8-16 x 1-1/2	LM-09193-60	x	x	1
	CENTER ARBOR & ARBOR HOUSING ASSEMBLY (not shown)	LM-16075-80	x	x	1	41	PULLEY-idler	LM-01083-86	x	x	1
	Includes:					42	SPACER	LM-16104-04	x	x	1
3	KEY-woodruff, #61	LM-09183-12	x	x	2	43	NUT-hex, 3/8-16	LM-09234-28	x	x	1
4	NUT-hex jam, 3/4-16	LM-16070-21	x	x	1	*44	WASHER-flat	LM-01773-53	x		1
* 5	PULLEY-cross drive	LM-01082-46	x	x	1	*	WASHER-flat	LM-01773-53		x	3
* 6	WASHER-flat	LM-01773-55	x	x	1	45	LEVER ASSEMBLY-idler	LM-16069-05	x	x	1
7	PULLEY-mower spindle	LM-16028-81	x	x	1	46	BELT-arbor drive	LM-16015-20	x		1
8	WASHER-special	LM-01084-72	x	x	3		BELT-arbor drive	LM-16021-57		x	1
	TUBE ASSEMBLY-arbor w/bearing (not shown)	LM-16087-05	x	x	1	47	NUT-hex, 3/8-16	LM-09169-50	x	x	2
	Includes:					48	SPACER-threaded	LM-16073-71	x	x	2
9	RING-backing	LM-01081-34	x	x	1	49	STUD	LM-16041-37	x	x	1
10	BEARING	LM-01082-02	x	x	2	*50	WASHER-flat	LM-01773-52	x	x	2
11	TUBE ASSEMBLY-arbor	LM-16086-64	x	x	1	51	BLADE-mower, 32"	LM-16069-79	x		3
12	SPACER	LM-16022-65	x	x	1		BLADE-mower, 36"	LM-16069-71		x	3
13	ARBOR ASSEMBLY-drive	LM-16075-32	x	x	1	*52	GUARD DISCHARGE	LM-16083-30	x		1
14	WASHER-belleville	LM-16057-46	x	x	J	*	GUARD DISCHARGE	LM-16083-28		x	1
15	WASHER-shoulder	LM-16057-45	x	x	1	53	NUT-hex, 1/4-20	LM-09166-22	x	x	8
16	SCREW-hex cap (L. H. thread) 1/2-20 x 1-1/2	LM-16059-33	x	x	1	54	WASHER-lock, 1/4	LM-09169-64	x	x	8
	SIDE ARBOR & ARBOR HOUSING ASSEMBLY (not shown)	LM-16075-81	x	x	2	*55	CLIP-baffle	LM-16083-31	x	x	2
	Includes: (each assembly)					56	BOLT-carriage	LM-07020-31	x	x	5
17	KEY-woodruff, #61	LM-09183-12	x	x	1	57	WASHER-flat, 1/4	LM-09173-77	x	x	3
18	NUT-hex jam, 3/4-16	LM-16070-21	x	x	1	*58	BAFFLE-mower, 32"	LM-16081-88	x		1
19	PULLEY-mower spindle	LM-16028-81	x	x	1	*	BAFFLE-mower, 36"	LM-16083-12		x	1
20	WASHER-special	LM-01084-72	x	x	3	59	SCREW-hex cap, 1/4-20 x 5/8	LM-09077-27	x	x	3
	TUBE ASSEMBLY-arbor w/bearings (not shown)	LM-16087-05	x	x	1	*60	HOUSING-mower, 32"	LM-16083-63	x		1
	Includes:					*	HOUSING-mower, 36"	LM-16083-62		x	1
21	RING-backing	LM-01081-34	x	x	1	61	SCREW-hex cap, 5/16-18 x 3/4	LM-09173-97	x	x	17
22	BEARING	LM-01082-02	x	x	2	62	NUT-hex jam, 5/16-18	LM-09233-62	x	x	1
23	TUBE ASSEMBLY-arbor	LM-16086-64	x	x	1	63	SPRING-idler	LM-16083-95	x	x	1
24	SPACER	LM-16022-65	x	x	1	64	STUD-idler spring	LM-16039-69	x	x	1
25	ARBOR ASSEMBLY-drive	LM-16075-33	x	x	1	65	SCREW-hex cap, 3/8-16 x 1	LM-09077-31	x	x	2
26	WASHER-belleville	LM-16057-46	x	x	1	66	CLIP-baffle	LM-16015-58	x	x	1
27	WASHER-shoulder	LM-16057-45	x	x	1	67	SUPPORT-hinge	LM-16082-81	x	x	1
28	SCREW-hex cap (L. H. thread) 1/2-24 x 1-1/2	LM-16059-33	x	x	1	68	BOLT-carriage, 5/16-18 x 5/8	LM-09194-13	x	x	4
29	WASHER	LM-01082-57	x	x	1	69	SPRING-torsion	LM-16083-48	x	x	1
30	NUT-hex, 5/16-18	LM-09173-72	x	x	28	*70	DEFLECTOR	LM-16083-59	x	x	1
31	WASHER-lock, 5/16	LM-09173-56	x	x	28	71	PIN-hinge	LM-16082-93	x	x	1
32	WASHER-flat, 5/16	LM-09176-42	x	x	22	72	FASTENER-pushnut	LM-01700-15	x	x	2
33	STOP-belt	LM-16015-21	x	x	2	73	BOLT-carriage, 5/16-18 x 1-1/4	LM-07020-08	x	x	1
34	BOLT-carriage, 5/16-18 x 3/4	LM-09194-14	x	x	4	*74	WASHER-special	LM-01576-43	x	x	2
35	SCREW-hex cap, 3/8-16 x 3/4	LM-09081-27	x	x	4		FILM-caution (not shown)	LM-01767-20	x	x	1
36	WASHER-lock, 3/8	LM-09169-65	x	x	6		DECAL-raise-lower	LM-16082-08	x	x	1
37	WASHER-flat, 3/8	LM-09173-78	x	x	2	*	FILM-safety	LM-01761-51	x	x	1
							DECAL-danger	LM-01767-19	x	x	1
							ACCESSORIES				
							PAINT-blue, spray can 14 oz.	24764	x	x	1
							PAINT-black, spray can 12 oz.	22772	x	x	1

Hitch & Rollers



No.	Description	Part No.	Qty.	No.	Description	Part No.	Qty.
1	PIN-cotter, 3/16 x 1	LM-09184-58	x x 2	24	BOLT-carriage, 3/8-16 x 3/4	LM-09221-10	x x 8
2	SHAFT ASSEMBLY-roller	LM-16076-05	x x 1	25	LINK-mower lift	LM-01081-99	x x 2
* 3	WASHER-flat (note 1)	LM-01773-51	x x as req'd	26	WASHER-flat, 3/16	LM-09239-06	x x 2
4	ROLLER ASSEMBLY	LM-01084-31	x x 4	27	PIN-lock	LM-01530-58	x x 1
5	Includes: (each assembly)			28	SCREW-hex cap, 3/8-16 x 1	LM-09077-31	x x 1
6	BUSHING	LM-01084-19	x x 2	29	BAR-lift	LM-16080-67	x x 1
7	SPACER	LM-16071-74	x x 5	30	CHAIN	LM-01070-31	x x 1
8	BOLT-shoulder	LM-16021-86	x x 4	31	NUT-hex, 5/16-18	LM-09233-62	x x 1
9	WASHER-flat, 7/16	LM-09184-30	x x 4	32	ROD-adjusting (R. H.)	LM-16069-74	x x 1
10	BAR-roller	LM-16032-63	x x 1	33	ROD-adjusting (L. H.)	LM-16069-10	x x 1
11	QUADRANT-mower lift	LM-16068-45	x x 1	34	ROD-adjusting (L. H.)	LM-16069-73	x x 1
12	SPRING-control lever	LM-16069-57	x x 1	35	NUT-hex jam, 1/2-20	LM-16069-09	x x 2
13	WASHER-lock, 3/8	LM-09169-65	x x 15	36	BRACKET-mower, front (R. H.)	LM-16069-81	x x 1
14	NUT-hex, 3/8-16	LM-09169-50	x x 15	37	SPACER-pivot	LM-16069-56	x x 2
15	LEVER-control	LM-16102-53	x x 1	38	PIN-rd. hd., 3/8 x 1-1/2	LM-01583-06	x x 2
16	PIN-cotter, 1/8 x 1	LM-16069-58	x x 1	39	LINK ASSEMBLY-mower	LM-16069-62	x x 1
17	ARM ASSEMBLY-mower	LM-09184-52	x x 6	* 40	SCREW-hex cap, 3/8-16 x 1-1/2	LM-09193-60	x x 2
18	YOKE-rod end	LM-16068-95	x x 1	41	WASHER-flat,	LM-07773-54	x x 2
19	YOKE-rod end	LM-16073-25	x x 2	42	BRACKET-mower, front (L. H.)	LM-16069-80	x x 1
20	PIN-quick	LM-01576-31	x x 5		SCREW-hex, 5/16-18 x 1	LM-09164-31	x x 1
21	PIN-yoke, 1/2	LM-81610-45	x x 2				
22	WASHER-flat, 3/8	LM-01543-05	x x 2				
23	RING-retaining	LM-09173-78	x x 5				
	BRACKET-pivot	LM-01572-86	x x 2				
		LM-16068-44	x x 1				

NOTE 1 - Minimum of 9 required.

* Denotes new parts

Part No.	Description	Qty.	Part No.	Description	Qty.
LM 01070 31	Chain	1	LM 16082 93	Pin-hinge	1
LM 01081 34	Ring-backing	2	*LM 16083 12	Baffle-mower, 36"	1
LM 01081 99	Link-mower lift	2	*LM 16083 28	Guard Discharge	1
LM 01082 02	Bearing	4	*LM 16083 30	Guard Discharge	1
*LM 01082 46	Pulley-cross drive	1	*LM 16083 31	Clip-baffle	2
LM 01083 86	Pulley-idler	1	LM 16083 48	Spring-torsion	1
LM 01084 19	Bushing-nylon	2	*LM 16083 59	Deflector	1
LM 01084 31	Roller Assembly	4	*LM 16083 62	Housing-mower, 36"	1
LM 01530 58	Pin-lock	1	*LM 16083 63	Housing-mower, 32"	1
LM 01543 05	Pin-yoke	2	LM 16083 95	Spring-idler	1
LM 01563 06	Pin	2	LM 16086 64	Arbor Tube Assembly	2
LM 01572 86	Ring-retaining	2	LM 16087 05	Arbor Tube Assembly	2
LM 01576 31	Yoke-rod end	2	LM 16102 53	Knob-ball	1
LM 01700 15	Fastener-push out	2	LM 16104 04	Spacer	1
*LM 01761 51	Film-safety	1	LM 81610 45	Clip-spring	5
*LM 01764 39	Belt-front PTO drive	1	FASTENING PARTS		
LM 01767 20	Film-caution	1	LM 01082 57	Washer-special	1
LM 09183 12	Key-woodruff #61	3	LM 01084 72	Washer-special	6
LM 16015 20	Belt-front PTO drive	2	*LM 01576 43	Washer-special	2
LM 16015 21	Stop-belt	2	*LM 01773 51	Washer-flat	as req'd
LM 16015 58	Clip-baffle	1	*LM 01773 52	Washer-flat	2
LM 16021 57	Belt-arbor drive	1	*LM 01773 53	Washer-flat	4
LM 16022 65	Spacer	2	*LM 01773 54	Washer-flat	2
LM 16028 81	Pulley-mower spindle	2	*LM 01773 55	Washer-flat	1
LM 16032 63	Bar-roller	1	LM 07020 08	Bolt-carriage	1
LM 16041 37	Stud	1	LM 07020 31	Bolt-carriage	5
LM 16068 29	Shield-arbor (R. H.)	1	LM 09077 27	1/4-20 x 5/8	3
LM 16068 30	Shield-arbor (L. H.)	1	LM 09077 31	3/8-16 x 1	3
LM 16068 44	Bracket-pivot	1	LM 09081 27	3/8-16 x 3/4	4
LM 16068 45	Quadrant-mower lift	1	LM 09164 31	Capscrew-5/16	1
LM 16068 95	Arm Assembly	1	LM 09166 22	Nut-1/4-20	8
LM 16069 05	Lever Assembly	1	LM 09169 50	Nut-3/8-16	17
LM 16069 09	Rod-adjusting	1	LM 09169 64	Washer-lock, 1/4	8
LM 16069 10	Rod-adjusting	1	LM 09169 65	Washer-lock, 3/8	21
LM 16069 56	Spacer-pivot	2	LM 09173 56	Washer-lock, 5/16	28
LM 16069 57	Spring-control lever	1	LM 09173 72	Nut-hex, 5/16-18	28
LM 16069 58	Lever-control	1	LM 09173 77	Washer-plain	3
LM 16069 62	Link Assembly	1	LM 09173 78	Washer-plain, 3/8	7
LM 16069 69	Stud-idler spring	1	LM 09173 97	5/16-18 x 3/4	17
LM 16069 71	Blade-mower, 36"	6	LM 09176 42	Washer-plain, 5/16	22
LM 16069 73	Rod-adjusting	1	LM 09184 30	Washer-plain, 7/16	4
LM 16069 74	Rod-adjusting	1	LM 09184 52	Pin-cotter, 1/8 x 1	6
LM 16069 79	Blade-mower 32"	3	LM 09184 58	Pin-cotter, 3/16 x 1	2
LM 16069 80	Bracket-mower	1	LM 09192 62	Nut-1/2-20	2
LM 16069 81	Bracket-front mower	1	LM 09193 60	3/8-16 x 1-1/2	3
LM 16071 74	Spacer	5	LM 09194 13	Bolt-5/16-18 x 5/8	4
LM 16073 25	Yoke-rod end	2	LM 09194 14	Bolt-5/16-18 x 3/4	4
LM 16073 71	Spacer-threaded	2	LM 09221 10	Bolt-3/8-16 x 3/4	8
LM 16075 32	Arbor Assembly	1	LM 09233 62	Nut-hex, 5/16-18	2
LM 16075 33	Arbor Assembly	1	LM 09234 28	Nut-hex lock, 3/8-16	1
LM 16075 80	Center Arbor	1	LM 09239 06	Washer-flat	2
LM 16075 81	Side Arbor	2	LM 09290 00	1/4-20 x 3/8	8
LM 16076 05	Shaft Assembly	1	LM 16021 86	Bolt-shoulder	4
LM 16080 67	Bar-lift	1	LM 16057 45	Washer-shoulder	2
*LM 16081 88	Baffle-mower, 32"	1	LM 16057 46	Washer-belleville	2
LM 16082 08	Decal	1	LM 16059 33	Screw-cap, 1/2-20	2
LM 16082 81	Support-hinge	1	LM 16070 21	Nut-lock, 3/4-16	2

