



DIXON INDUSTRIES, INC
A BLOUNT COMPANY
AIRPORT INDUSTRIAL PARK
PO BOX 1569
COFFEYVILLE KS 67337 0945
316 251 2000
FAX 316 251 4117

BLOUNT

TECHNICAL DATA BROCHURE

ZTR 4421 & 4422

IMPORTANT: READ OPERATOR'S MANUAL BEFORE OPERATING OR MAKING ADJUSTMENTS

DELUXE SEAT ADJUSTMENT:

Raise upper body to fully open position by lifting on arm rest and seat back. Loosen seat adjustment knobs under seat frame. Slide seat to desired setting and fully tighten seat adjustment knobs.

Caution: DO NOT Operate mower unless seat adjustment knobs are fully tightened.

REMOVING THE BODY:

1. Both the 4421 & 4422 use a two piece body. The upper body can be raised up and back, and also tilted forward to expose the transaxle.
2. To remove upper body, lift up and fold forward. Disconnect throttle cable P/N 4679 from engine. Disconnect wiring harness by simply pulling plug apart. Then clip wire ties so harness is loose from seat bracket. Next remove cotter key P/N 3052 from upper body mounting pin P/N 1460. Then hold upper body and remove pin P/N 1460.
3. Reverse above procedure to reinstall.

ADJUSTMENT OF MOWER DECK DRIVE BELT:

No adjustment necessary! The spring loaded idler pulley maintains proper tension throughout belt life.

REMOVING THE MOWER BLADE:

1. Secure mower blade P/N 8688 from turning.
2. Observe blade position when removing.
3. Remove blade bolt P/N 3268, and blade washer P/N 6260.
4. To reinstall, reverse above procedure. Tighten blade bolts to 60 ft. lbs. of torque.

WARNING: Sharp edges on blade can cause injury! Caution should be exercised when service is required on the blade.

REMOVING THE MOWER DECK:

1. Remove mower deck drive belt P/N 6111 by pulling idler pulley P/N 1687 away from belt and remove belt from the rear pulley.
2. Remove the two clevis pins P/N 3072 from the L-rods at rear of deck and slide free from slots.
3. Remove the clevis pin P/N 3072 from the lift linkage at the front of deck.
4. Remove cotter pin from shaft P/N 1332 located at front of mower deck on slide plates welded at battery box. Slide shaft free.
5. Raise front of mower and roll it free of mower deck assembly.
6. To install deck, reverse above procedure.

MOWER BLADE OPERATION:

1. To start mower blades, pull up slightly on blade drive switch handle and move it forward to the "ON" position.
2. To stop mower blades, move switch handle to the "OFF" position.

SAFETY CHECKS

IMPORTANT - PERFORM SAFETY CHECKS AFTER MAKING ANY REPAIRS OR ADJUSTMENTS

1. After reassembly, while seated on mower, attempt to start engine with mower deck engaged. Engine should *not* start. If engine does start, return the mower to an Authorized Dixon dealer for adjustment or repair.
2. Disengage mower deck and start engine. With the operator in the normal seated position, engage mower deck and remove weight from seat. The engine should stop. If the engine does *not* stop when operator rises from seat, return the mower to an Authorized Dixon dealer for adjustment or repair.
3. Engage, then disengage mower blade in each cutting height. Insure that blade disengages and comes to a stop within (5) seconds in each height position. If blade does *not* disengage properly, contact your Authorized Dixon dealer.

CAUTION: DO NOT OPERATE MOWER IF ANY SAFETY FEATURE IS NOT FUNCTIONING CORRECTLY

Parking Brake Adjustment:

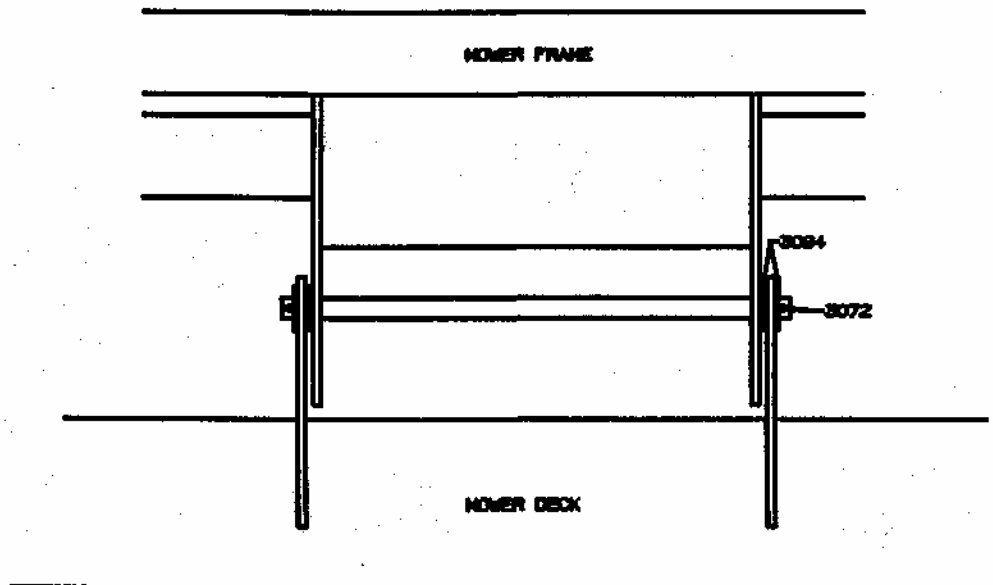
1. Adjustment points are located at rear of transaxle on each side. Remove roll pins from swivel fitting P/N 2172. Turn swivel fitting on brake rod P/N 5100 in, to tighten. Just enough to prevent brake from slipping when engaged.
2. Reinstall roll pin.

CAUTION: Over tightening may cause premature wear on brake band P/N 5085.

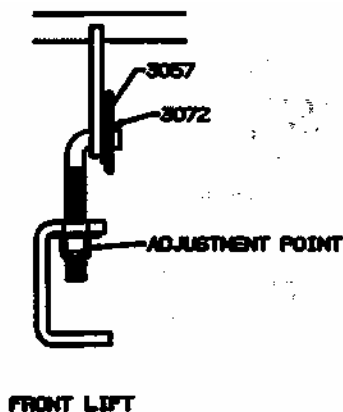
THE FOLLOWING INSTRUCTIONS REFER TO 42" MOWER DECKS:

INSTALLATION:

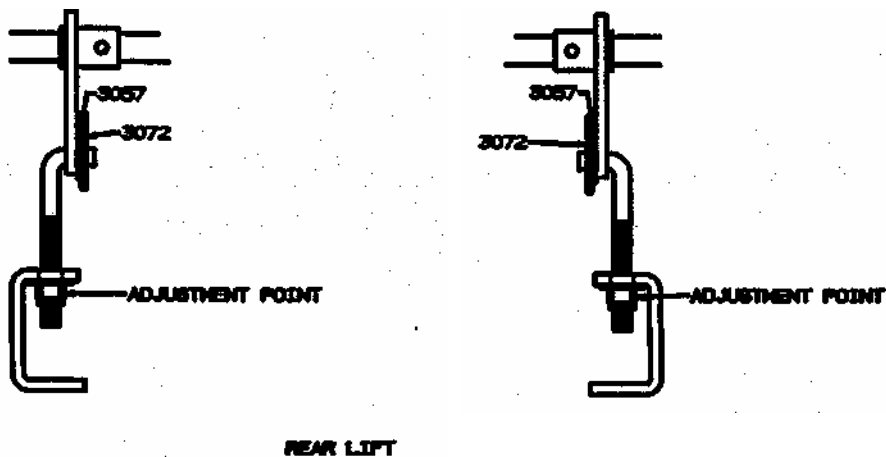
1. Position mower deck assembly under frame, raise front of mower deck assembly enough to allow cross shaft P/N 1332 to slide through frame guides and mower deck guides. Install (2) washers P/N 3094 and (1) hair pin cotter P/N 3072 on each end of the cross shaft.



2. Attach short L-rod P/N 1355 to lift arm as shown in drawing.



3. Attach long L-rod P/N 1409 to rear lift arms as shown in drawing.



4. **NOTE:** It is possible to install the engine to mower deck drive belt P/N 6111 at this time; however, our engine manufacturers have suggested that this belt be installed after the engine has been fully serviced per manufacturers' suggestions and allowed to operate at 1/2 to 3/4 throttle settings for approximately (3) minutes. This will place the initial start up of the engine in a no load situation and allow complete engine lubrication.

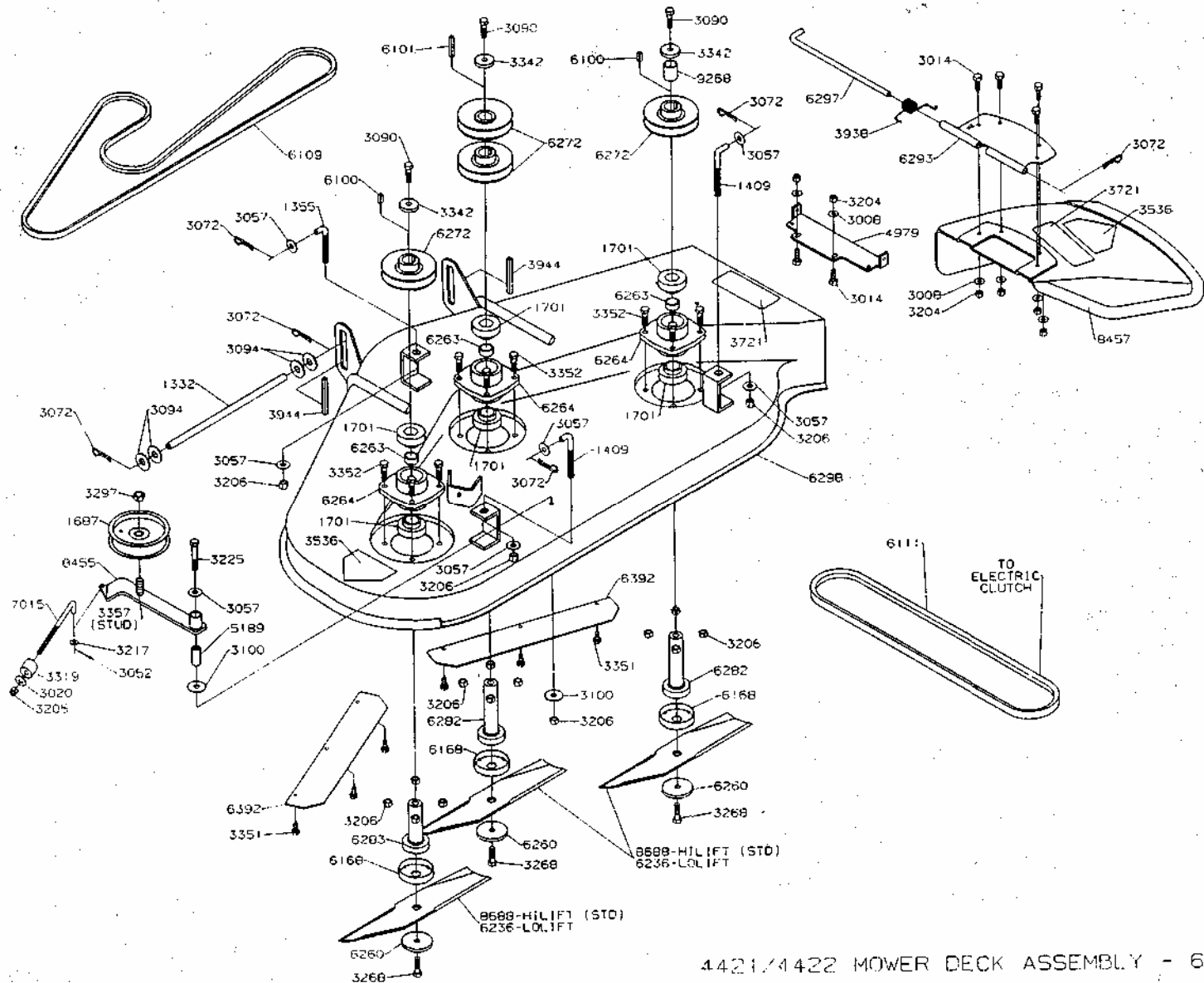
ADJUSTMENT:

1. Install engine to mower deck drive belt P/N 6111.
2. Check and adjust tire pressures: Front 19 to 21 psi; Rear 8 to 12 psi.

Tires may have been over inflated for shipping purposes.

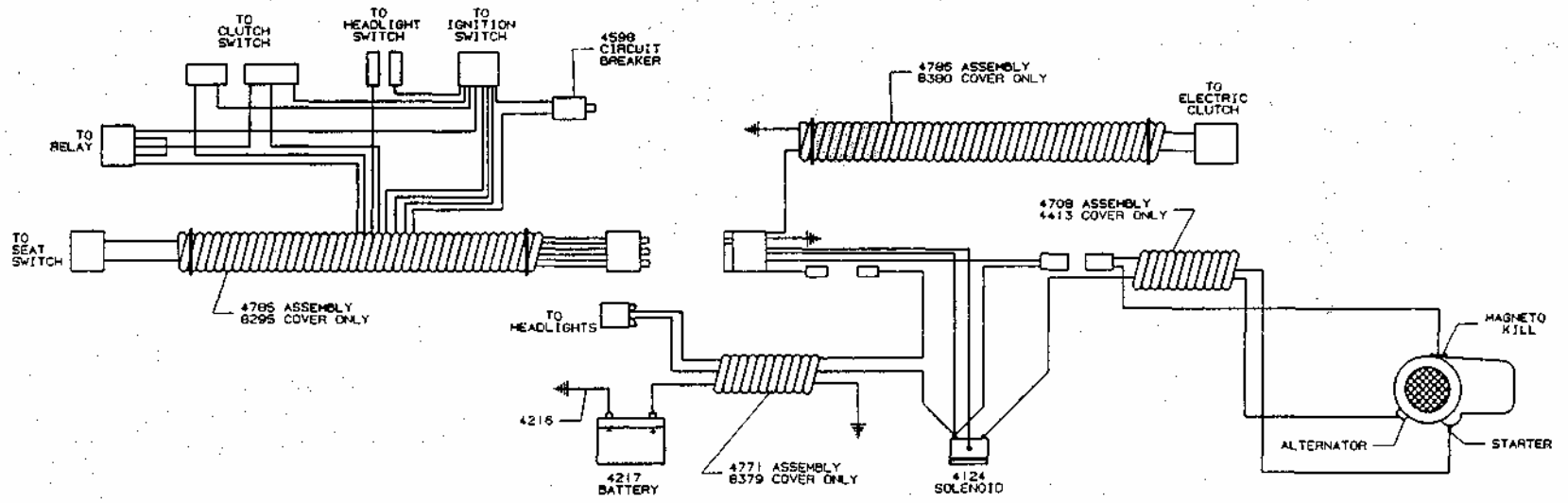
3. Place the mower on a level surface. Using the lift handle, raise the mower deck to a height which will allow measurements to be taken from the surface to the tops of the two outer mower deck cutter blades P/N 8688.
4. Align both outer mower deck cutter blades to obtain a side to side measurement. Starting with the left blade as viewed from operator's position, secure measurement from level surface to the bottom of the cutter blade tip, rotate blade and check measurement on opposite end of cutter blade. Tip to tip measurement on the same cutter blade should not vary more than 1/8th of an inch. Maintain measurement taken and verify against the right outer cutter blade. If adjustment is required, loosen or tighten the nuts on the two rear L-rods.
5. Align both outer mower deck cutter blades front to rear as viewed from operator's position. Measure from surface to the bottom of the cutter blade tip, at the rear of the mower deck. Using the nut on the single front L-rod, loosen or tighten as required to place the mower deck approximately 1/8th of an inch higher in the rear than the front of the deck.
6. Re-check belt routing and alignment, start engine, burnish in electric blade clutch using at least (5) engagements at 3/4 to full throttle settings. Each engagement should last approximately (5) seconds.

NOTE: The completed adjustment places the mower deck in a position which will produce a quality cut. Ground speed, grass conditions, types of grass, tire pressures, dull or bent blades and loose belts are just some of the factors which will cause poor cut quality.



4421/4422 MOWER DECK ASSEMBLY - 6369

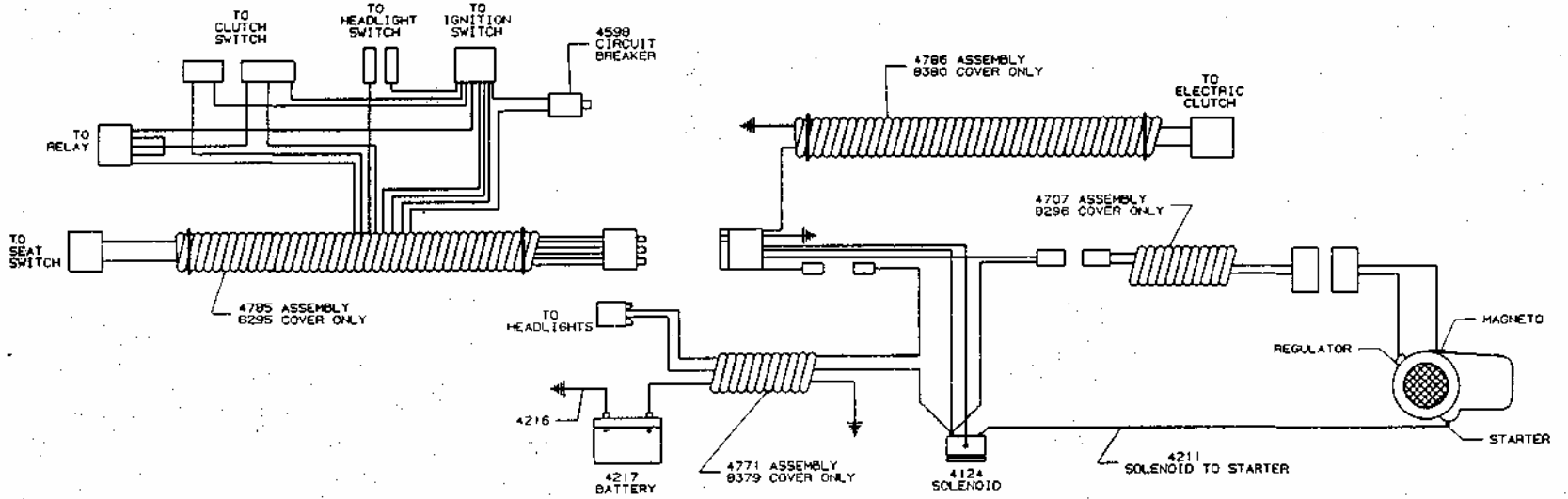
4421/4422 MOWER DECK ASSEMBLY



BODY WIRING LOOM - 4785

REAR WIRING LOOM - 4786

WIRING KIT - 8381



BODY WIRING LOOM - 4785

REAR WIRING LOOM - 4786

WIRING KIT - 8382

4422 WIRING ASSEMBLY