



DIXON®

ZTR®

OPERATOR'S MANUAL

ZEETER™

422 & 424

IMPORTANT

The Dixon ZTR mower is both easy and fun to operate. However, any power mower must be operated properly to be safe. It is not a toy or a recreational vehicle. Before you start to use the mower, read the operator's manual carefully, and become completely familiar with the controls. Your Dixon dealer will gladly provide a check-out ride, and answer any questions.

READ CAREFULLY

You have purchased a top quality lawn mower that has been carefully inspected and adjusted at the factory. This lawn mower is warranted for 1 year from date of delivery against all defects in materials and workmanship. Lawn mowers used for commercial service are warranted for 30 days from date of delivery. SEE YOUR DEALER FOR WARRANTY SERVICE FOR PARTS.

ONE-YEAR LIMITED WARRANTY

This lawn mower is warranted for one (1) year from date of delivery against all defects in materials and workmanship. Lawn mowers used for commercial service are warranted for 30 days from date of delivery. (Lawn mowers other than those used only at residence of owner are considered as commercial service.)

Each new mower is warranted against manufacturing defects in material and workmanship under normal use and service. Our obligation, under this warranty, shall be limited to the replacement to the original retail purchaser of any part or parts, which, within the warranty period, shall be shown to be defective due to faulty workmanship or materials at the factory. All parts claimed defective must be returned to the factory for inspection, repair, or replacement with transportation charges prepaid.

This warranty does not apply to damage in transit or damage caused by misuse, negligence or accident, to alterations or repairs done outside the factory or authorized service stations, nor does it obligate us to assume any transportation charges in connection with the replacement of parts claimed to be defective.

Our warranty does not apply to the blades or belts on our mowers due to the very nature of the function they perform and to the elements they are exposed to.

The warranty specifically excludes engines and tires which are warranted separately by their respective manufacturers. All claims for defective engines or engine parts must be made in accordance with the engine manufacturer's warranty.

We reserve the right to make changes in design and changes or improvements on our product without imposing any obligation upon ourselves to install the same on products heretofore manufactured.

This warranty is null and void if any parts other than original manufacturer's parts are used. There is no other express warranty.

IMPLIED WARRANTIES, including those of merchantability and fitness for a particular purpose, are limited to one (1) year from purchase and, to the extent permitted by law, any and all implied warranties are excluded.

SERIAL NUMBERS

The lawn mower has three serial numbers:

Mower Number — Located on frame at right rear transaxle mount. Transaxle Number — Located on transaxle. Engine Number — Located on engine. When referring to serial number on Warranty Registration, etc., use Mower Serial Number located on frame.

SAFETY INSTRUCTIONS

BEFORE MOWING

1. Read these safety instructions and engine manufacturer's operating and maintenance instructions that are furnished with the mower.
2. Discuss proper maintenance with your Dixon dealer, to save money and prevent injury. Consult your dealer before removing any parts.
3. Don't allow anyone to operate your Dixon mower without proper instruction. Young children should never be allowed to operate any power mower, riding or walking.
4. Before mowing, pick up all debris—particularly stones and sharp objects.
5. Before starting the engine, make sure the gas cap is in place.

DURING MOWER OPERATION

1. The revolutionary Dixon mower attracts many admiring neighbors. But when mowing, all persons — especially children — and pets should be cleared from the mowing area.
2. Wear appropriate, safe clothing when mowing — close-fitting jeans or slacks and heavy leather or safety shoes with rough soles. Never use any kind of mower with bare feet or open sandals, not even an old push-type model!
3. When grass is wet or slippery, do not use any riding mower.
4. Always mow at the slowest speed that will cut satisfactorily.
5. Keep hands and feet away from the blade at all times.
6. Although the Dixon mower is equipped with a missile

deflector, keep persons clear of the discharge chute. Do not operate

7. Use extreme caution when mowing hills or slopes with *any mower*.
8. Always disengage blades before taking the mower across walks or objects that project above the surface.
9. When the mower is not in use, turn the engine off; never leave the engine running unattended. Your Dixon mower is equipped with a weight-sensitive switch that kills the engine when operator leaves the seat while blades are engaged. Test this important safety feature before each time mower is used. This may be done by starting engine, engaging blades and then rising slightly from seat. If engine does not stop, see your dealer for necessary repair.
10. Before adjusting your mower or adding fuel, turn the engine off. Let it cool, and disconnect the spark plug so the engine cannot start by accident. Be sure all moving parts are stopped.
11. Never run the engine indoors; the fumes are dangerous.
12. Before backing your Dixon mower, stop, turn around, and look.
13. Gasoline fumes are explosive; use only approved gasoline containers to store small amount of fuel. No special oil/gas mixtures are needed for your Dixon mower.
14. If the mower should start vibrating, stop the engine immediately and check for damage or loose parts. Vibration is usually the warning of trouble.
15. Never lift lawn mower by the body; lift only by the frame.
16. Never carry passengers.

ALWAYS SET PARKING BRAKE AND DISENGAGE BLADE OPERATION BEFORE DISMOUNTING.

IMPORTANT OPERATING INSTRUCTIONS

Dixon ZTR mowers offer a new concept in mowing, providing unique maneuverability and ease. The following procedures will allow one to become familiar with the unique method of control very easily.

1. **SET PARKING BRAKE** — Be sure that drive levers are free and in the neutral position. (When drive levers are released, they should return to neutral position.)
2. "Blade Operation" lever is to be set in the "Disengage" position.
3. Move throttle control to "Choke" position.
4. To start models with electric starting, simply insert ignition key and turn to the far right position. When the engine starts, release the ignition key and it will remain in the "RUN" position. To stop the engine simply turn the key to the "OFF" position.

NOTE: Some electric start models are also equipped with manual start provision. To start engine manually turn switch to "RUN" and pull the starter rope.

5. Set engine to desired speed by adjusting throttle control. (Suggest set at slow speed during initial operation.)
6. NOTE SAFETY FEATURE: Safety switches stop engine when operator leaves seat while blades are engaged, and engine cannot be started when blades are engaged. OPERATOR SHOULD TAKE PRECAUTIONS AND NOT RELY ON SAFETY SWITCHES.
7. This unit is equipped with a unique transaxle that requires only two drive levers to control braking, turning, direction and acceleration. **TO GO FORWARD**

From neutral position gently push both drive levers forward; to increase speed move levers further forward.

TO GO BACKWARD

From neutral position gently pull both drive levers rearward.

TURNING

Turning is controlled by moving one drive lever slightly forward or rearward of the other. To turn left, move left lever rearward of right lever. To turn "square corners" move lever of desired direction to neutral. To turn on mower's own axis (Zero Radius) reduce speed and move one lever to reverse position and the other to forward position.

BRAKING

To brake mower, move both levers in direction opposite of travel, release levers to neutral, set parking brake. When stopping on incline, it may be necessary to hold slight pressure on levers in direction opposite of slope, until parking brake is set.

ALWAYS SET PARKING BRAKE BEFORE DISMOUNTING.

INITIAL OPERATION

It is recommended that first operation of mower be done at a slow throttle setting with mower blades disengaged until operator is thoroughly familiar with the unit.

You may have a tendency to "over control" mower at first. Slight movement - fingertip control — is all that's necessary for easy operation.

8. Mower Blade operation:
 - Cutting height is set by positioning the adjustment lever. Push button knob on top of lever, set desired cutting height, lock in to position by releasing button knob.
 - To start mower blades, move lever on floor to "engage" position. To stop mower blades, move lever to "disengage" position.

ALWAYS DISENGAGE BLADE OPERATION BEFORE DISMOUNTING.

9. Parking Brake:

Parking brake is on right hand side of floor area and is engaged by pushing full forward with foot. To disengage, pull lever back toward operator by hand. In emergency situations, brake may be used in conjunction with the natural braking of the transaxle by applying pressure with foot. Always set parking brake before dismounting. Be sure that parking brake is disengaged before moving.

MAINTENANCE

BEFORE PERFORMING ANY MAINTENANCE, SHUT OFF ENGINE, ALLOW TO COOL AND DISCONNECT SPARK PLUG.

ENGINE

For complete engine operating and maintenance information, refer to engine operating and maintenance instructions furnished by the engine manufacturer and supplied with each mower.

BATTERY

Procedure for initial activation of battery:

1. Fill with electrolyte solution to lower ring of battery.
2. Let stand for 30 minutes.
3. Charge at 4 amps for 3 hours or 1 amp for 12 hours.
4. After initial filling, fluid level may be maintained with distilled water.

Procedure for off-season storage:

1. Charge battery.
2. Disconnect cables from battery terminals. Identify cables so that they may be easily reconnected to the correct

terminal. (See also wiring diagram shown on Body Assembly illustration.)

3. Clean top of battery and terminals.
4. Do not remove battery from mower.
5. To reactivate, reconnect cables to correct terminals and charge battery if needed.

BELT ADJUSTMENT

The best tension for a V-belt drive is the lowest tension at which the belts will not slip under normal load condition. Check the tension on a new belt frequently during first hours of operation and every 10-15 hours or monthly thereafter. Too much tension shortens belt and bearing life. Too little tension causes slippage and loss of power. Be sure that belts and pulleys are kept free of foreign material. If belt slippage occurs, tighten it just enough to prevent slippage.

TRANSAXLE DRIVE BELT

To adjust tension, loosen four (4) bolts which hold engine to mount and belt keeper in place. Adjust tension bolt (located at rear of chassis) until desired tension is achieved. Do not over tighten. Tighten four (4) bolts holding engine.

MOWER DRIVE BELT

Belt tension for mower drive belt is adjusted by loosening nut on mower deck turnbuckle assembly and turning turnbuckle to achieve desired tension. Retighten nut. Tension should be checked with belt in engaged position.

REPLACE BELTS WHEN ADJUSTMENT CAN NO LONGER BE MADE SATISFACTORILY OR IF BELTS BECOME WORN.

BODY ROMOVAL ZTR 422 - 424

1. Disconnect throttle cable from engine.
2. Remove four (4) control lever bolts and remove upper control levers.
3. Remove engaging handle by removing bolt and nut under handle.
4. Remove the two (2) attach nuts on floor of body and two (2) sheet metal screws at the rear of body.
5. Disconnect the rear wiring loom from the body by lightly squeezing the Econo-Seal plug. This plug is located at the left rear of the body.
6. Note: Loosen bolts that hold safety switch (P/N 4079) mount plate and slide switch away from engaging rod. Tighten one bolt just enough to hold switch in this position until body is reassembled.
7. Place height adjustment lever in vertical position and carefully lift body up and off of chassis.
8. Reverse the above procedure for assembly.

Note: With the mower deck in the engaged position slide the switch bracket toward the engaging rod (P/N 6087-1) until the switch leaf just makes contact with the switch button. Tighten both bolts in switch bracket. With the mower deck engaged, attempt to start engine in all cutting height positions. If engine starts in any cutting height position readjust the switch. Disengage the mower deck and start the engine in each cutting height position. If engine fails to start in any cutting height position readjust switch. With operator in normal mowing position engage mower deck and remove weight from seat. The engine should die. Repeat this procedure in each cutting height position.

CHAIN DRIVES

ADJUSTMENT

To adjust the drive chains, the body must be removed and shims added behind the transaxle. Loosen 4 bolts which hold the transaxle to the frame. Insert shims as needed for adjustment between transaxle and mount plates. When properly adjusted, the slack span at the mid-point of the chain should have a total possible movement perpendicular to the chain of about 9/16". Tighten the 4 bolts which hold the transaxle to the frame. Replace chain when rollers become loose, chain breaks, or chain fails to operate properly.

LUBRICATION

1. Chains: Proper lubrication is important for effective roller chain operation. Use high quality lubricating oil (do not use grease or extra heavy oil) and apply drops of oil to the chain joints every 10-15 hours of operation.
2. Front Caster Assembly: Each caster assembly has a grease fitting located on the underside of the bearing. For best results, use any good multi-purpose grease every 10-15 hours of operation.
3. All other Bearings: All other bearings on your mower are sealed and require no lubrication.

WHEELS AND TIRES

Correct tire pressure is essential to the correct operation of the machine. The correct pressure for the drive tires is 8-10 lbs. The front tires should be inflated to 20-24 lbs. Lug nuts should be checked periodically.

ELECTRICAL SYSTEMS

Keep all connections clean and tight. Maintain the fluid in the battery at correct level.

BODY

The body may be washed with a mild detergent and waxed with any automotive type wax.

TRANSAXLE

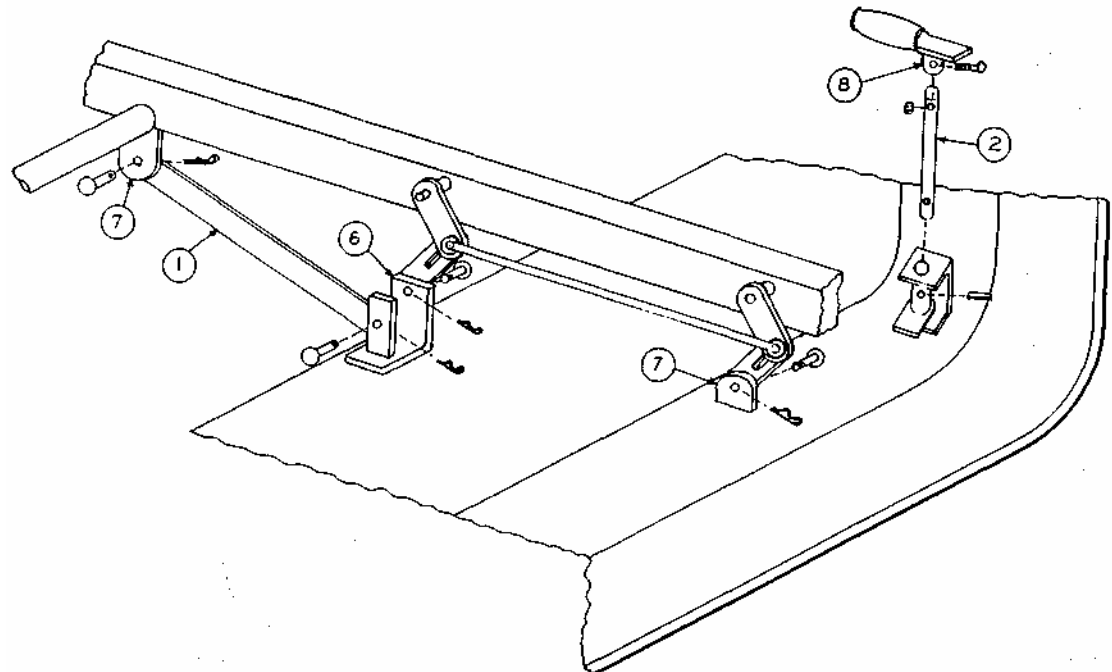
For adjustment or repair confer with authorized Dixon dealer service department. Adjustment or repair by other than authorized dealer voids warranty.

SPARE PARTS

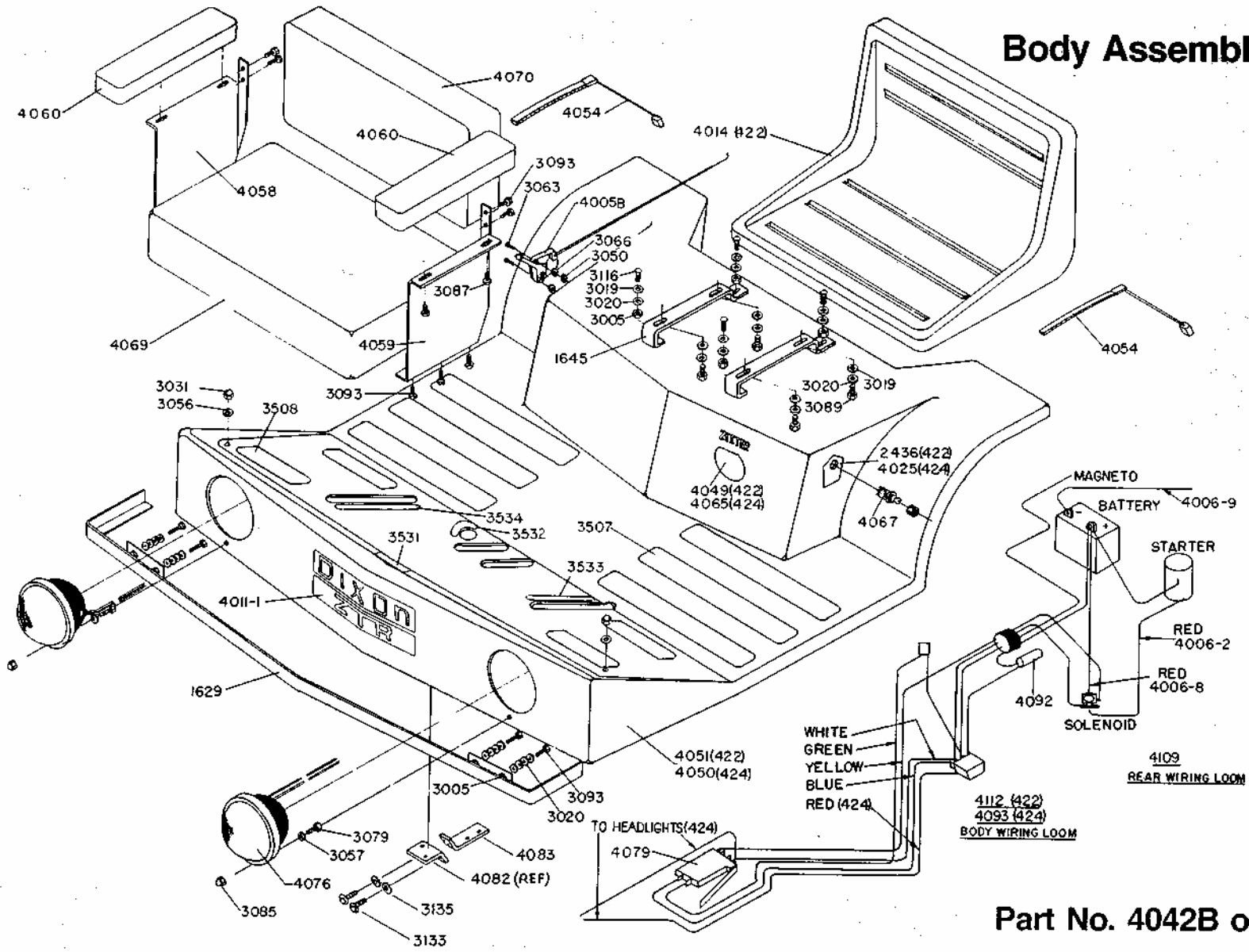
See your dealer for ordering spare parts or warranty service.

INSTALLING AND REMOVING MOWER DECK FROM FRAME

1. Attach stabilizer arms to mower deck with pins and clips as shown on drawing.
2. Attach the $\frac{1}{2}$ " dia. engaging rod with a rollpin through the engaging cam.
3. Position the drive belt on pulleys.
4. Place mower deck under unit in approximate operating position with engaging rod through hole in the floor.
5. Connect drive belt to lower engine pulley, being certain that belt is inside of belt guides. Loosen belt keeper by loosening the two rear engine mount bolts; this will allow belt to be placed on motor pulley. Retighten engine mount bolts.
6. Attach lift linkage to mower deck on the inside of the attaching lugs as shown on drawing with pins and clips. (4 places)
7. Attach stabilizer arms to pivot point on the inside of attaching bracket with pins and clips.
8. Place engaging handle on engaging rod and fasten with bolt and locknut.
9. After installing pin clips, rotate pins so that open end of clip is down.

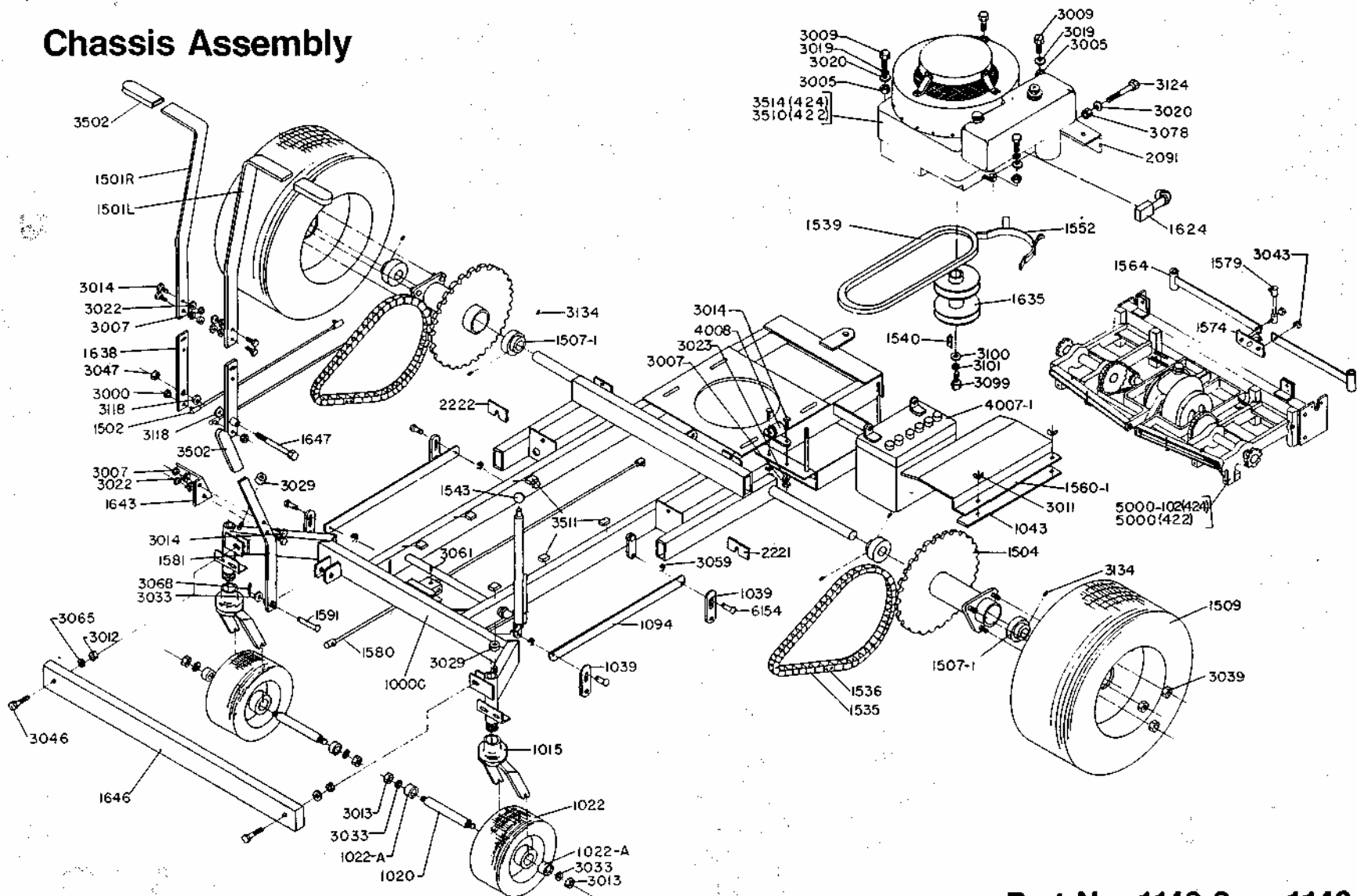


Body Assembly



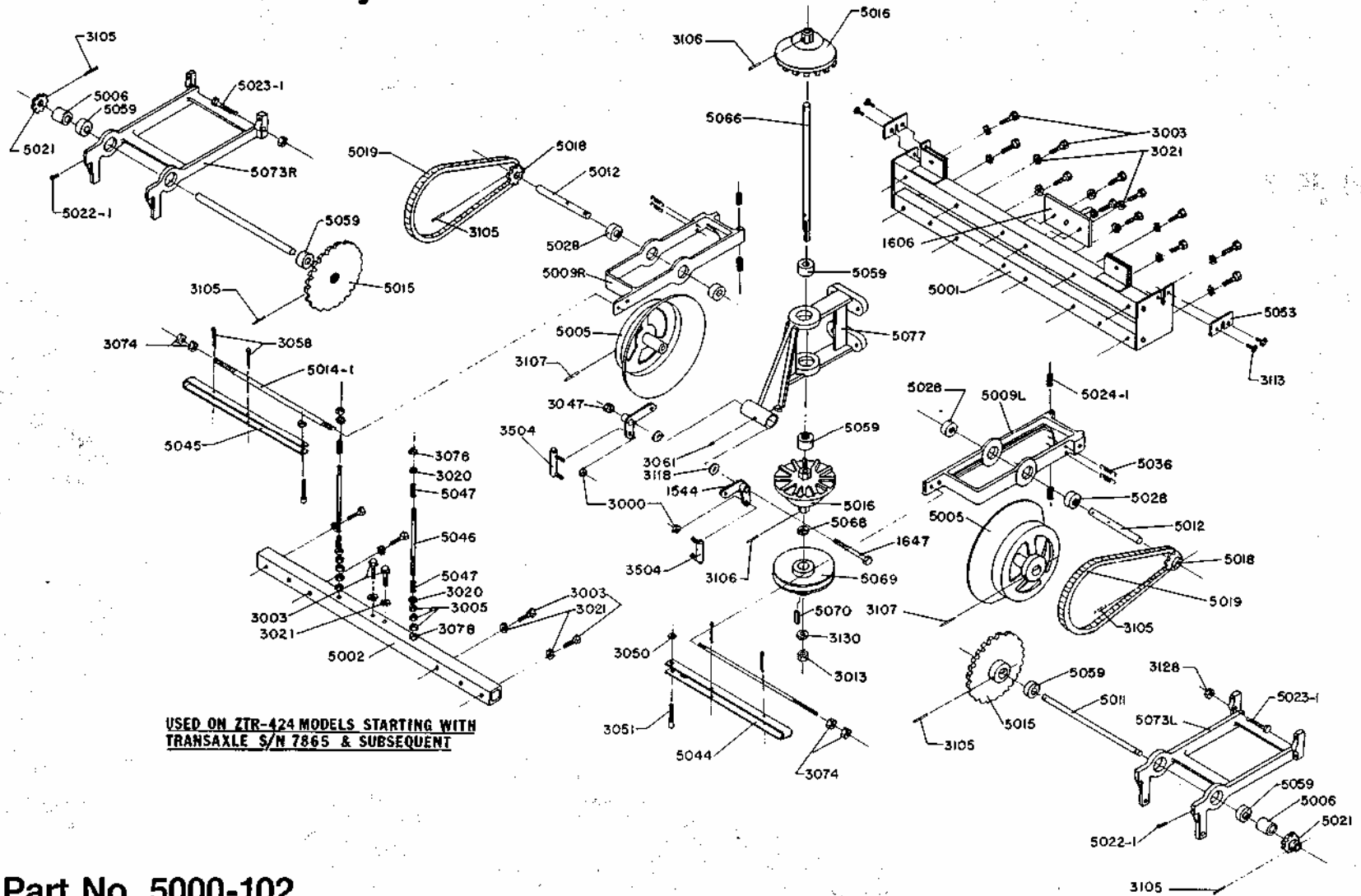
Part No. 4042B or 4066

Chassis Assembly



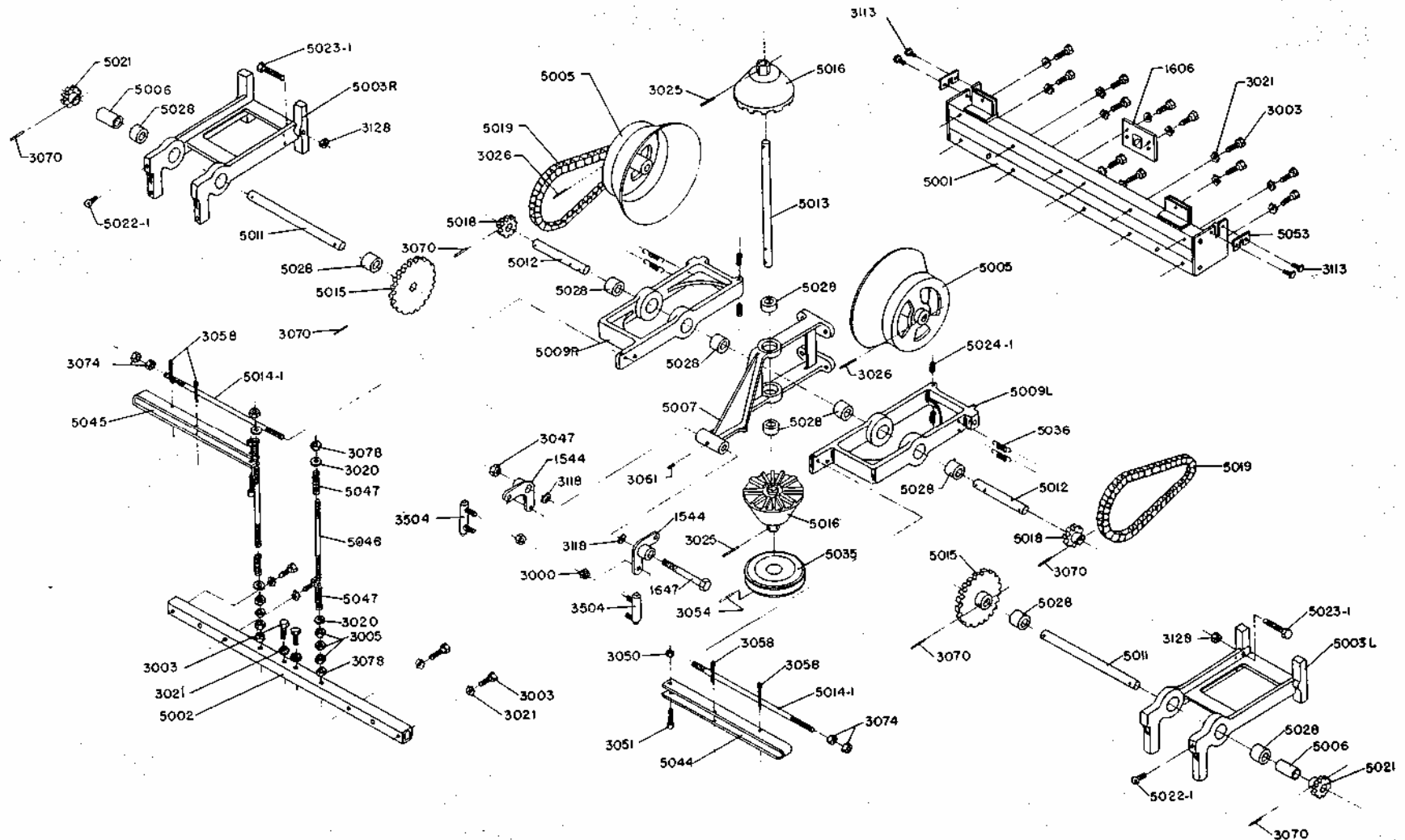
Part No. 1146-2 or 1146-4

Transaxle Assembly - 5000-102



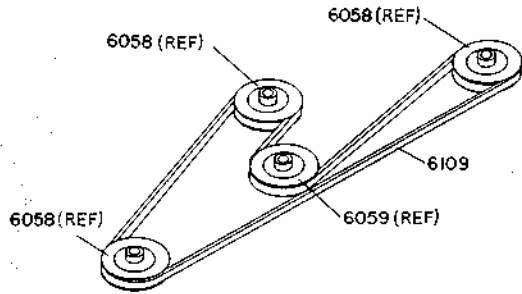
Part No. 5000-102

Transaxle Assembly - 5000

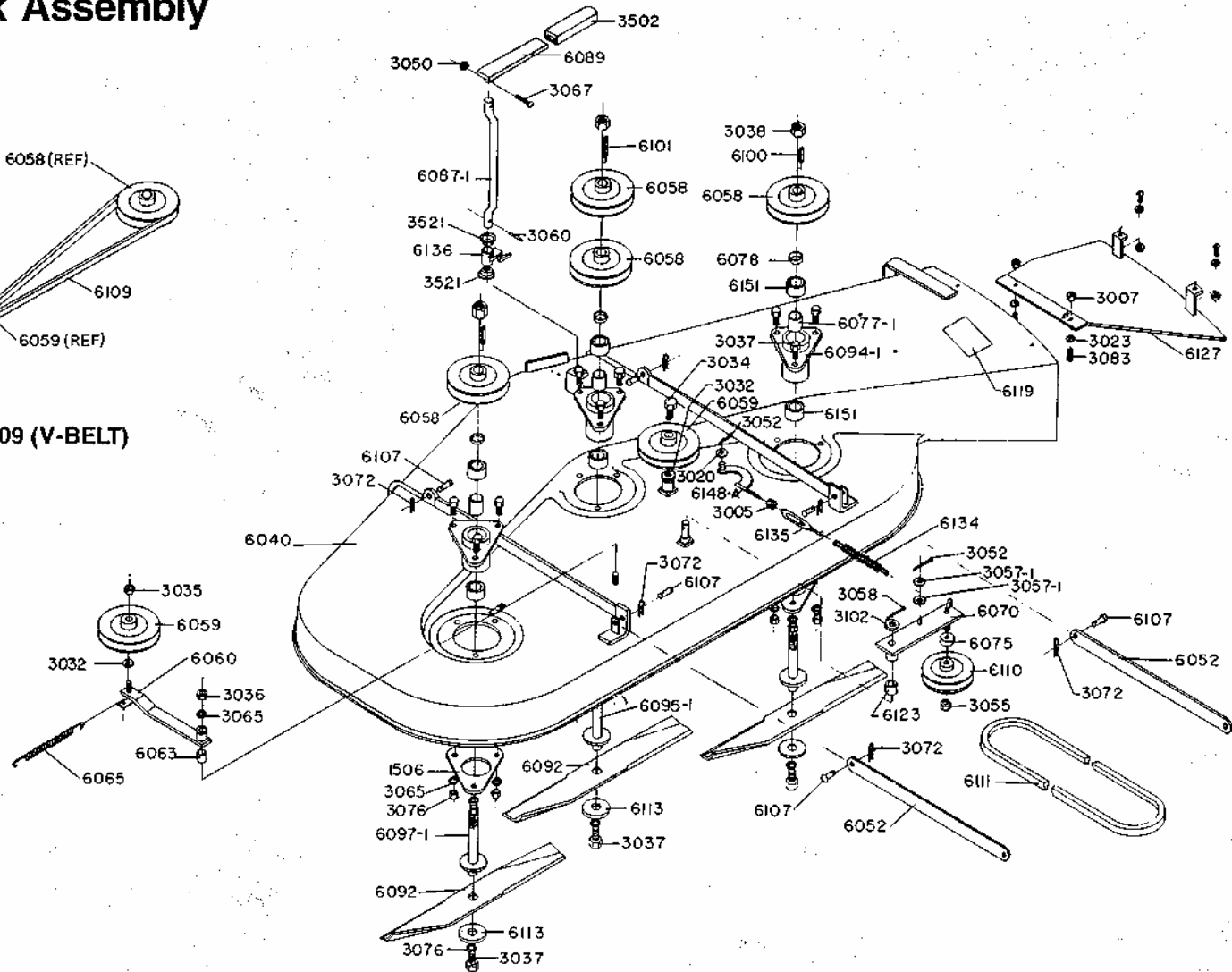


Part No. 5000

Mower Deck Assembly



ROUTING OF P/N 6109 (V-BELT)



Part No. 6030-1

PARTS LIST FOR 42" MODELS

Part No.	Description	Part No.	Description	Part No.	Description
1000C	Frame Weldment	1581	Brake Pedal Arm Weldment	4006-9	Battery - Ground Cable
1014	Caster Pipe Nipple	1591	Brake Pedal Pin	4007-1	12 V Battery
1015	Caster Weldment	1606	Brake Mount Weldment	4008	Solenoid
1020	Caster Axle	1624	Oil Drain Assembly	4009	Wire Clip (not shown)
1022	Caster Wheel & Tire	1629	Bumper Weldment	4011-1	Name Decal, 42"
1022A	Caster Wheel Bearing	1635	Double Engine Pulley	4013	Wire Tie
1039	Lower Lift Link	1636	Bellcrank Kit	4014	Seat, ZTR 422
1043	Battery Strap	1638	Lower Control Lever Assembly	4014A	Seat Assembly (includes 4054)
1093	Tie Bar Assembly	1643	Brake Pedal	4022	Ground Terminal
1094	Tie Bar	1645	Seat Bracket	4025	Switch Decal
1095	Caster Weldment Assembly	1646	Weight Brace	4049	Model Decal, ZTR 422
1501R	Upper Control Lever R	1647	Control Pin (replaces 1604)	4050	Body, ZTR 424
1501L	Upper Control Lever L	2091	Tension Bracket	4051	Body, ZTR 422
1502	Control Rod Assembly	2221	Transaxle Shim 16 ga.	4054	Seat Switch Assembly
1503	Wheel Hub Assembly	2222	Transaxle Shim 22 ga.	4058	Arm Rest Bracket R
1504	Wheel Hub	2436	Switch Decal	4059	Arm Rest Bracket L
1506	Hub Flange	3029	Front Grommet	4060	Arm Rest
1507-1	Wheel/Hub Bearing	3059	Spring Wire Clip	4065	Model Decal, ZTR 424
1509	Rear Wheel & Tire	3502	Hand Grip	4067	Ignition Switch
1535	Drive Chain	3504	Double BallJoint	4067A	Switch Key (for 4067)
1536	Chain Connecting Link	3507	Floor Pad - Long	4069	Seat Bottom
1539	Transaxle Drive Belt	3508	Floor Pad - Short	4070	Seat Back
1540	Engine Shaft Key	3511	Adhesive Bumper	4071	Seat Assembly
1543	Lift Knob	3521	Engaging Cam Mount Bushing	4075	10 AMP Fuse (not shown)
1544	Bellcrank Assembly	3531	Decal - Operating Instructions	4076	Headlight Assembly
1552	Belt Keeper Weldment	3532	Decal - Blade Drive	4079	Body Switch
- 1560-1	Battery Splash Guard	3533	Decal - Cutting Height	4083	Switch Bracket - Switch Section
1564	Brake Arm Weldment	3534	Decal - Parking Brake (42")	4092	Fuse Holder
1574	Brake Pivot Weldment	4005B	Throttle Cable	4093	Body Wiring Loom
1579	Short Brake Rod	4006-2	Solenoid - Starter Cable	4109	Rear Wiring Loom
1580	Long Brake Rod	4006-8	Solenoid - Battery Cable	4112	Body Wiring Loom

Part No.	Description
4113	Wiring Kit
4114	Wiring Kit
5000	Transaxle
5000-102	Transaxle
5001	Rear Tube Assembly
5002	Front Tube
5003R	Support R
5003L	Support L
5004R	Support Assembly R
5004L	Support Assembly L
5005	Discup
5006	Support Spacer
5007	Cone Frame
5009R	Cradle R
5009L	Cradle L
501 OR	Cradle Assembly R
5010L	Cradle Assembly L
5011	Support Shaft
5012	Cradle Shaft
5013	Cone Frame Shaft
5014-1	Torque Rod
5015 -	24 T Sprocket
5016	Molded Cone (each)
5018	9 T Sprocket - Narrow
5019	Transaxle Chain
5021	9 T Sprocket - Wide
5022-1	Thumbscrew
5023-1	Pivot Bolt
5024-1	Cradle Spring
5025	Cone Frame Assembly

Part No.	Description
5028	Transaxle Bearing
5035	Transaxle V-Pulley
5036	Pivot Spring
5044	Torque Rod Stiffener L
5045	Torque Rod Stiffener R
5046	Positive Neutral Rod
5047	Positive Neutral Spring
5050	Positive Neutral Kit
5053	Brake Arm Retainer
5054	Transaxle Service Tool Kit
5055	Torque Rod Stiffener Kit
5059	Double Bearing
5061R	HD Support Assembly R
5061L	HD Support Assembly L
5065	HD Cone Frame Assembly
5066	HD Cone Frame Shaft
5068	HD Pulley Spacer
5069	HD Transaxle Pulley
5070	Transaxle Key
5073R	HD Support R
5073L	HD Support L
5077	HD Cone Frame
6030-1	Mower Deck Assembly
6040	Mower Deck Weldment
6052	Stabilizer Arm
6058	V-Pulley
6059	Flat Idler Pulley
6060	Serpentine Idler Weldment
6063	$\frac{5}{16}$ " OD x $\frac{3}{8}$ " ID Bronze Bushing
6065	Serpentine Idler Spring

Part No.	Description
6070	Engaging Idler Weldment
6075	Engaging Idler Spacer
6077-1	Bearing Spacer (use w/6094-1)
6078	Pulley Spacer
6087-1	Engaging Rod
6089	Engaging Handle
6092	Mower Blade
6093-1	Outer Hub Assembly (replaces 6093)
6094-1	Deck Hub Casting
6095-1	Center Shaft
6097-1	Outer Shaft
6100	Outer Shaft Key
6101	Center Shaft Key
6107	Deck Pin
6108-1	Center Hub Assembly (replaces 6108)
6109	V-Belt
6110	V-Idler Pulley
6111	Deck Drive V-Belt
6113	Blade Washer
6119	Caution Decal
6123	Engaging Idler Stud Bushing
6127	Deflector Weldment
6134	Engaging Spring
6135	$\frac{5}{16}$ " Turnbuckle
6136	Engaging Cam Weldment
6148A	Connecting Arm Assembly
6151	Mower Deck Bearing
6154,	$\frac{5}{16}$ " x 1" Rivet
8005	Fiberglass Repair Kit (limited shelf life)

OWNER INFORMATION

Date Mower Purchased _____ Mower Model Number _____

Mower Purchased from _____

dealer name & address

Mower Serial Number _____ Transaxle Serial Number _____

Oil changed this date:

1. _____

4. _____

2. _____

5. _____

3. _____

6. _____

Engine tuned this date:

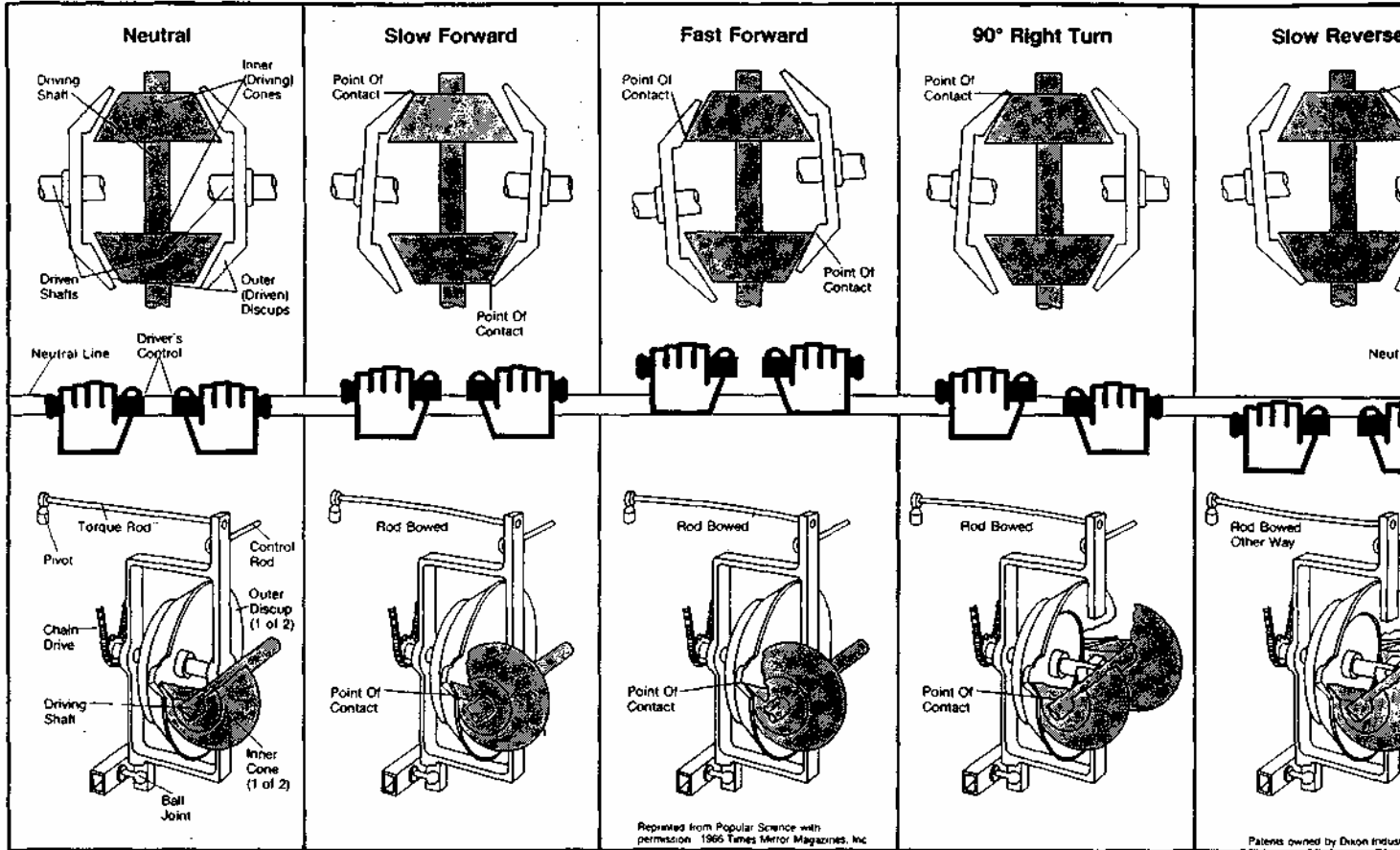
1. _____

3. _____

2. _____

4. _____

ing
ixle!



DIXON INDUSTRIES, INC. BOX 494, COFFEYVILLE, KANSAS 67

U.S.A.

© DIXON and ZTR are registered trademarks of Dixon Industries, Inc.