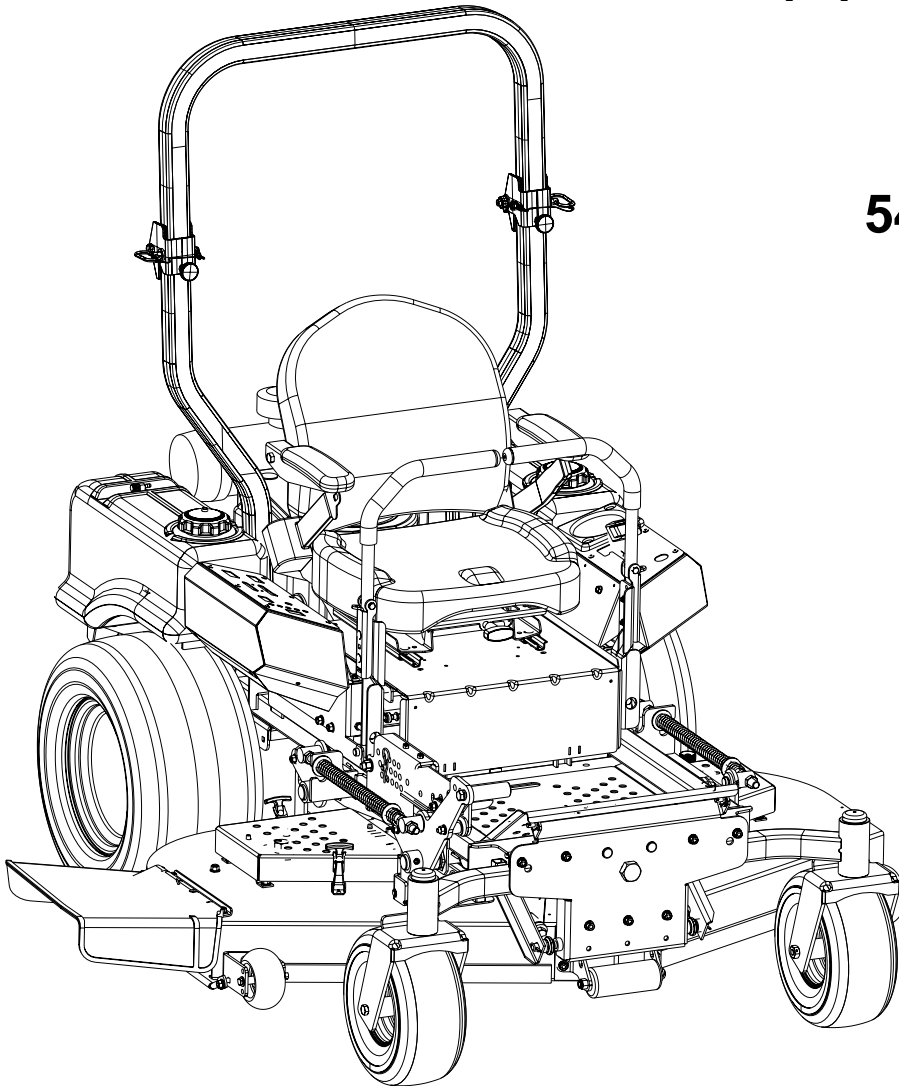




Hydrostatic Zero-Turn Commercial Riding Mower

Professional Turf Equipment

54" Fabricated Deck



ILLUSTRATED PARTS LIST

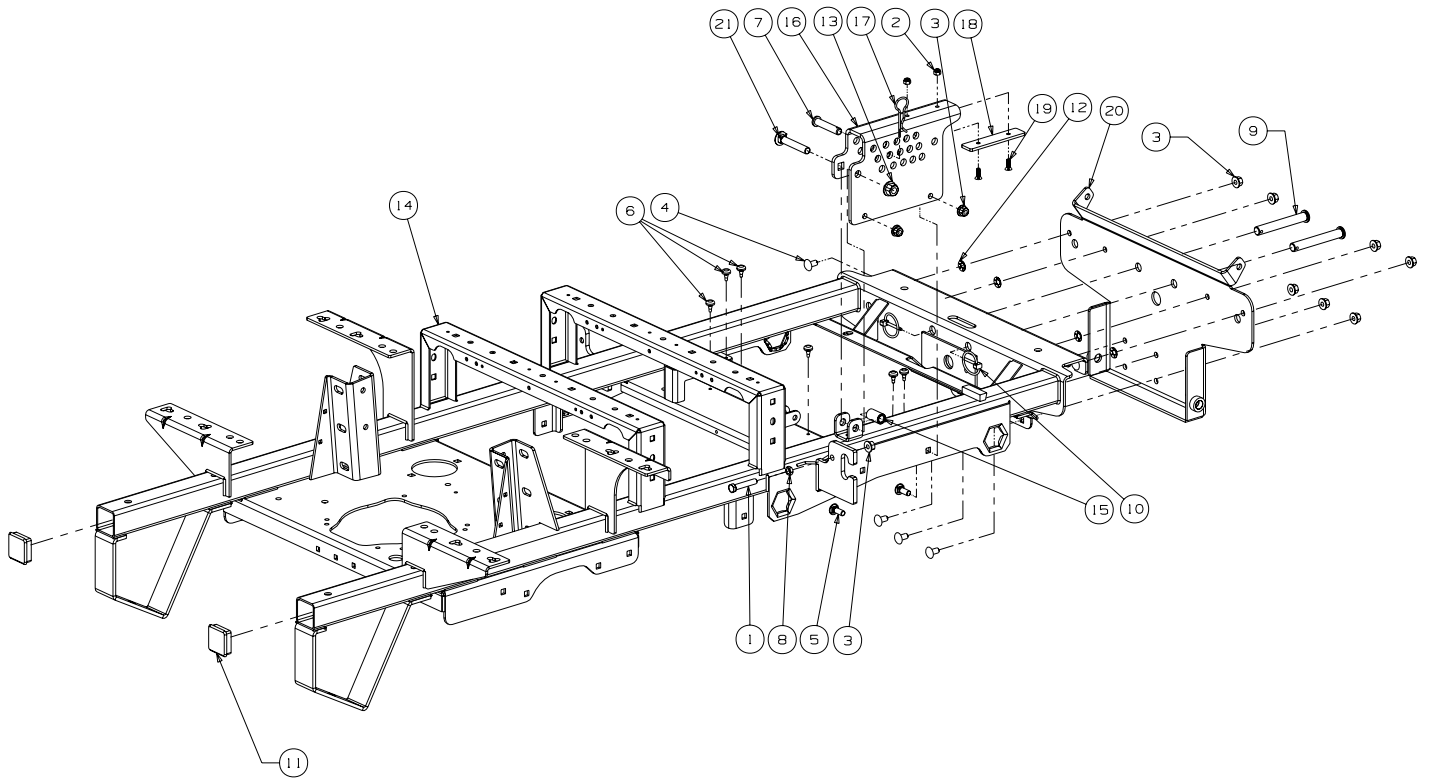
TABLE OF CONTENTS

| | |
|---|-----------|
| Frame Assembly | 3 |
| 54" Fabricated Cutter Deck. | 4 and 5 |
| 54" Spindle Assembly. | 6 and 7 |
| Hydro Hose and Pump Assembly. | 8 and 9 |
| Brake Assembly | 10 and 11 |
| Fuel Tank Assembly | 12 |
| Rear Bumper | 13 |
| Front Caster Assembly | 14 and 15 |
| Control Assembly | 16 and 17 |
| 54" Wheel Assembly. | 18 |
| Seat/Floor Panel Assembly | 19 |
| 23HP Kawasaki Engine Assembly | 20 and 21 |
| Lift Assembly | 22 and 23 |
| 23HP Electrical Assembly Kawasaki | 24 |

MODELS LISTED IN THIS MANUAL

**23HP Tank,
53AI8CTW750**

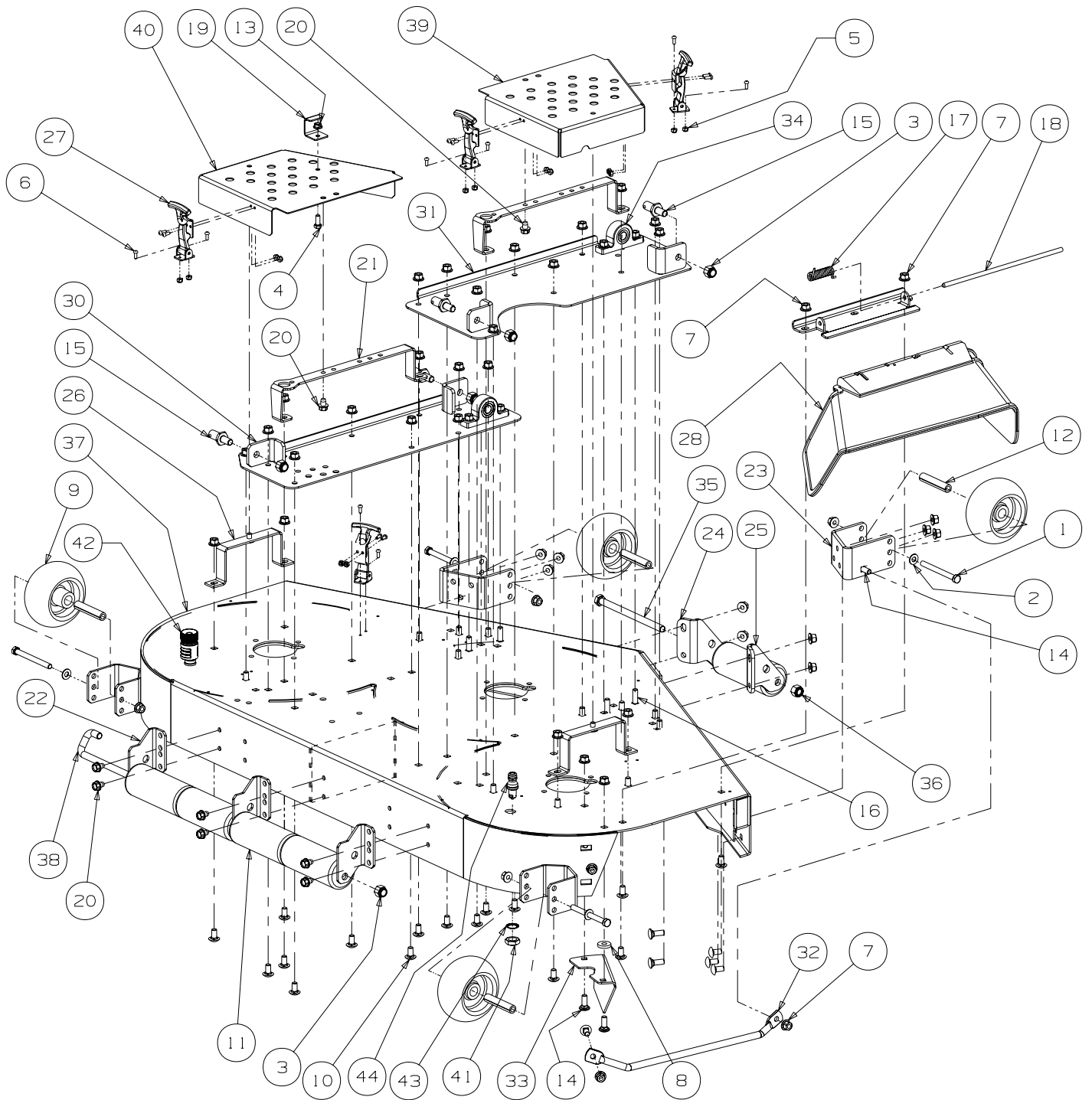
Frame Assembly- Figure 1 and Parts List



GD: 02002665-03/29/07

| Ref. No. | Part No. | Description | Qty. |
|----------|----------|-----------------------------------|------|
| 1 | 01005810 | Hex Cap Screw 3/8-16 x 2.00 | 2 |
| 2 | 00012152 | Lock Nut w/Nylon Insert | 2 |
| 3 | 00022560 | Hex Nut, 3/8-16 Flange Lock | 10 |
| 4 | 01000372 | Carriage Bolt, 3/8-16 x .75 Long | 7 |
| 5 | 01000643 | Carriage Bolt, 3/8-16 x 1 | 2 |
| 6 | 01001170 | Rubber Bumper, .62 OD x .22 Thick | 6 |
| 7 | 01001776 | Clevis Pin, .500 Dia. x 2.50 Lg. | 1 |
| 8 | 01002511 | Nut, 3/8-16, Jam | 1 |
| 9 | 01003282 | Clevis Pin, .625 Dia x 4.375 Long | 2 |
| 10 | 01003993 | Linch Pin, 3/16 Dia. | 2 |
| 11 | 01005160 | Plug, Square Tube | 2 |
| 12 | 01008225 | Push Retainer, 3/8 | 4 |
| 13 | 01010119 | Nut, 1/2-13, Flangelock | 1 |
| 14 | 02002599 | Frame Assembly | 1 |
| 15 | 02002655 | Spacer, .51 ID x .75 OD x 1.40 | 1 |
| 16 | 02003055 | Lift Index Bracket | 1 |
| 17 | 02003074 | HitchPin, .120 Dia. x 3.0 | 1 |
| 18 | 02003749 | Wear Plate, 1.25 x 5.00 | 1 |
| 19 | 02003505 | Flat Head Cap Screw, 1/4-20 x .75 | 2 |
| 20 | 02003524 | Bracket Assembly, Frame, Front | 1 |
| 21 | 02003563 | Carriage Bolt, 1/2-13 x 3.00 | 1 |

54" Fabricated Deck Assembly - Figure 2

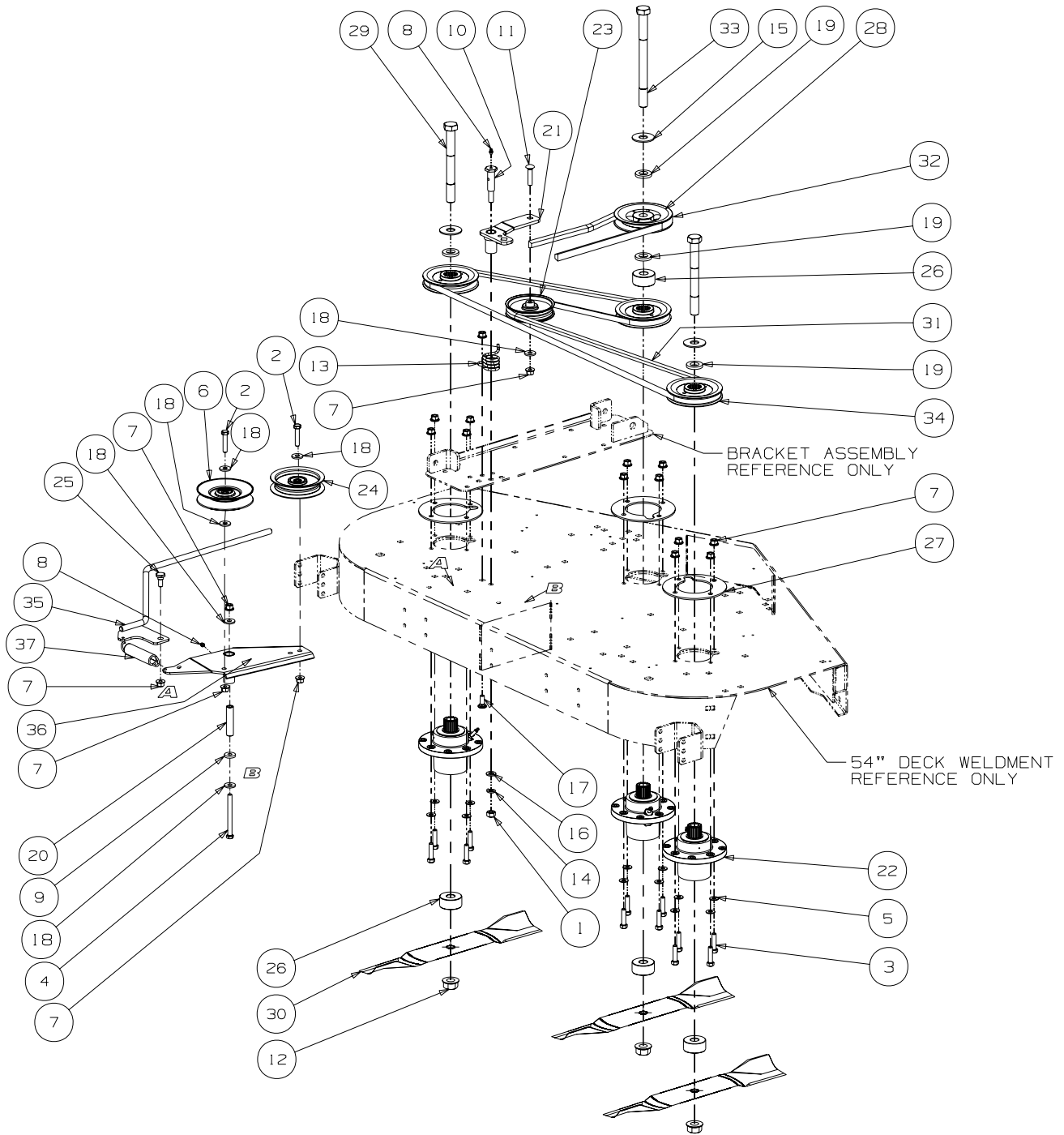


GD: 02002927-03/15/07

54" Fabricated Deck Assembly - Parts List for Figure 2

| Ref. No. | Part No. | Description | Qty. |
|----------|------------|--|------|
| 1 | 00011925 | Hex Cap Screw, 3/8-16, 3.75 | 4 |
| 2 | 00012158 | Flat Washer, 3/8 | 4 |
| 3 | 00012428 | Lock Nut, Nylon Insert, 1/2-13 | 5 |
| 4 | 00013406 | Hex Cap Screw, 5/16-18 x 3/4 | 1 |
| 5 | 00014608 | Lock Nut, Nylon Insert, 10-32 | 16 |
| 6 | 00017778 | Phillips Head Screw, 10-32 | 16 |
| 7 | 00022560 | Hex Nut, 3/8-16 Flange Lock | 50 |
| 8 | 00083192 | Idler Washer | 1 |
| 9 | 01000343 | Complete Wheel, 5.00 Dia. | 4 |
| 10 | 01000372 | Carriage Bolt, 3/8-16 x .75 Lg. | 37 |
| 11 | 01000385 | Front Roller | 5 |
| 12 | 01000398 | Wheel Spacer | 4 |
| 13 | 01000635 | Hexflange Lock Nut, 5/16-18 | 1 |
| 14 | 01000643 | Carriage Bolt, 3/8-16 x 1 | 7 |
| 15 | 01001745 | Pin, 5/8 Dia. x 1.2 Lg. | 4 |
| 16 | 01002010 | Carriage Screw, 3/8-16 x 1.25 | 4 |
| 17 | 01003253 | Spring Torsion, 0.4 ID x 2.16 LG | 1 |
| 18 | 01003254 | Deflector Chute Rod | 1 |
| 19 | 01004109 | Tension Rod Stop Bracket | 1 |
| 20 | 01004304 | Hex Index Washer Screw, 3/8-16, .5 | 8 |
| 21 | 01004685 | Cover Support | 2 |
| 22 | 01005364 | Roller Mount Bracket | 3 |
| 23 | 01005260 | Anti-Scalp Wheel, Front Mount Bracket | 2 |
| 24 | 01005256 | Left Hand Front Roller Mount Bracket | 1 |
| 25 | 01005258 | Right Hand Front Roller Mount Bracket | 1 |
| 26 | 01005437 | Outer Belt Cover Support Assembly | 2 |
| 27 | 01005869 | T-Handle Draw Latch | 4 |
| 28 | 01006693 | Deflector Chute | 1 |
| 29 | 01008226 | Deflector Chute Bracket | 1 |
| 30 | 01008633 | Left Hand Mount, Deck Bracket Assembly | 1 |
| 31 | 01008635 | Deck Bracket Assembly | 1 |
| 32 | 01008644 | Finger Guard | 1 |
| 33 | 01009300 | Chute Bracket | 1 |
| 34 | 02000109 | Pillow Block | 2 |
| 35 | 01006961 | Hex Cap Screw, 1/2-20 x 7.50 | 1 |
| 36 | 02002299 | Lock Nut, Nylon Insert, 1/2-20 | 1 |
| 37 | 02002528 | 54 Deck Assembly | 1 |
| 38 | 02002799 | J-Hook w/ Threaded Roller | 1 |
| 39 | 02002836 | Right Hand Belt Deck Cover | 1 |
| 40 | 02002837 | Left Hand Belt Deck Cover | 1 |
| 41 | 712-0641 | Hex Nut, M16-1.5 | 2 |
| 42 | 721-04041 | Water Nozzle Adaptor | 1 |
| 43 | 736-0760 | Lock Washer, 17 x 23.8 x 1.95 | 2 |
| 44 | 737-04003B | Deck Water Nozzle | 2 |

54" Fabricated Deck Spindle Assembly - Figure 3

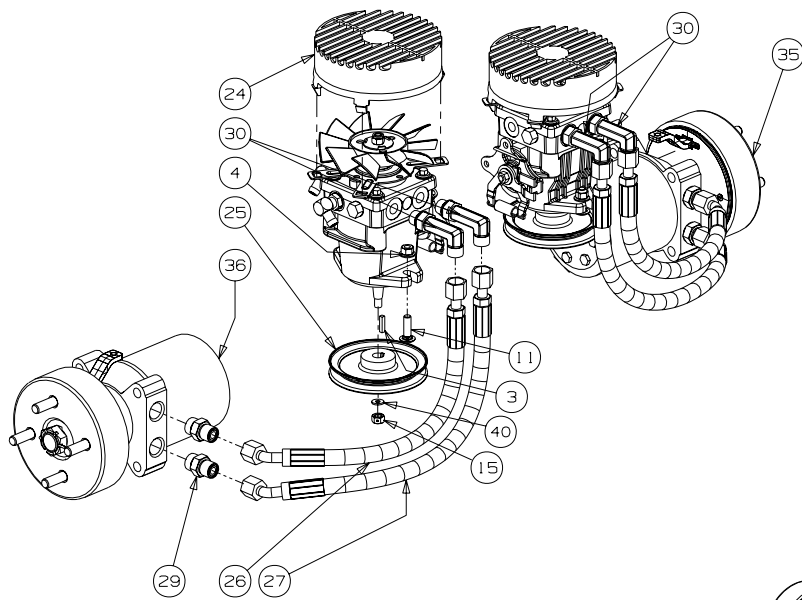


GD: 02003630-11/01/06

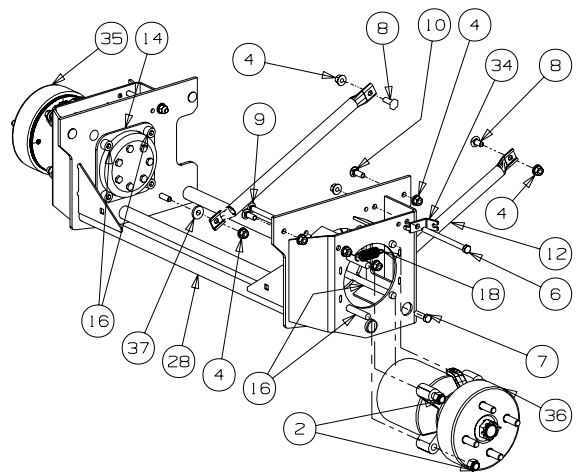
54" Fabricated Deck Spindle Assembly - Parts List for Figure 3

| Ref. No. | Part No. | Description | Qty. |
|----------|----------|--|------|
| 1 | 00005763 | Hex Nut, 7/16-14 | 1 |
| 2 | 00008495 | Hex Cap Screw, 3/8-16 x 1-1/4 | 2 |
| 3 | 00011438 | Hex Cap Screw, 3/8-16 x 1-1/2 | 12 |
| 4 | 00011925 | Hex Cap Screw, 3/8-16, 4.00 | 1 |
| 5 | 00012158 | Flat Washer, 3/8 | 12 |
| 6 | 756-3045 | Idler Pulley, 5.06 Dia. | 1 |
| 7 | 00022560 | Hex Nut, Flange Lock, 3/8-16 | 18 |
| 8 | 00060078 | Grease Fitting, 1/4-28 x 3/16 | 2 |
| 9 | 00083192 | Idler Washer | 1 |
| 10 | 01000302 | Shoulder Screw, 7/16-14 | 1 |
| 11 | 01000364 | Hex Carriage Screw, 3/8-16, 1.75 | 1 |
| 12 | 01000380 | Flange Hex Nut, 3/4-16 | 3 |
| 13 | 01000387 | Torsion Spring Idler | 1 |
| 14 | 01000389 | Lock Washer, 7/16 | 1 |
| 15 | 01000392 | Flat Washer, .781 ID, 2.00 OD, .105 | 3 |
| 16 | 01000393 | Flat Washer, .469 ID, .875 OD, .105 | 1 |
| 17 | 01000643 | Carriage Bolt, 3/8-16 x 1 | 1 |
| 18 | 01000723 | Flat Washer, .406 ID, 1.0 OD, .105 | 6 |
| 19 | 01003123 | Spacer, .812 ID x .218 LG | 4 |
| 20 | 01003245 | Spacer, .39 ID x .625 OD x 2.75 | 1 |
| 21 | 01005737 | Idler Arm Assembly, Deck Spindle includes: | 1 |
| | 01000308 | Bearing | 2 |
| 22 | 01003532 | Spindle Assembly, Aluminum Fab Deck | 3 |
| 23 | 01004081 | Flat Pulley | 1 |
| 24 | 01004101 | Idler Pulley, 4.06 OD w/Deep Plan Flanges | 1 |
| 25 | 01004118 | Shoulder Screw, .50 x .27 LG, 3/8-16 | 1 |
| 26 | 01004415 | Spacer, .760 ID x 2.000 OD x 1.1 | 4 |
| 27 | 01005434 | Plate Support, Cast Aluminum Spindle | 3 |
| 28 | 01005201 | V Pulley, 5.25 OD | 1 |
| 29 | 01005213 | Hex Cap Screw, 3/4-16, 7.00 | 2 |
| 30 | 01005337 | Hi-Lift Blade, 19.0, 0.756 | 3 |
| 31 | 01005375 | V Belt, A Section x 114.3 | 1 |
| 32 | 01005378 | V Belt, B Section x 87.3 | 1 |
| 33 | 01005388 | Hex Cap Screw, 3/4-16, 9.00 | 1 |
| 34 | 01005616 | V Pulley, 5.00 OD | 3 |
| 35 | 01005690 | Rod Fab Deck Spring Tension | 1 |
| 36 | 02003489 | Idler Arm Assembly includes: | 1 |
| | 01000308 | Bearing | 2 |
| 37 | 02003712 | Spring Extension, .94 OD x 7.57 | 1 |

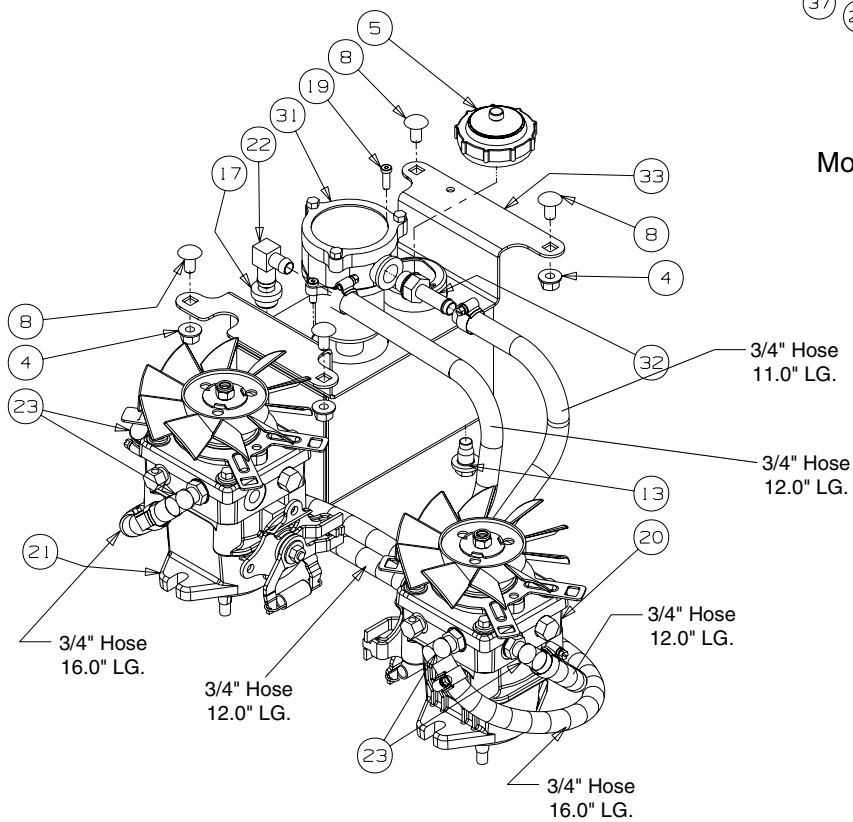
Hydro Hose and Pump Assembly - Figure 4



Pump & Motor Systems



Motor Mount Systems



Pilot & Drain Systems

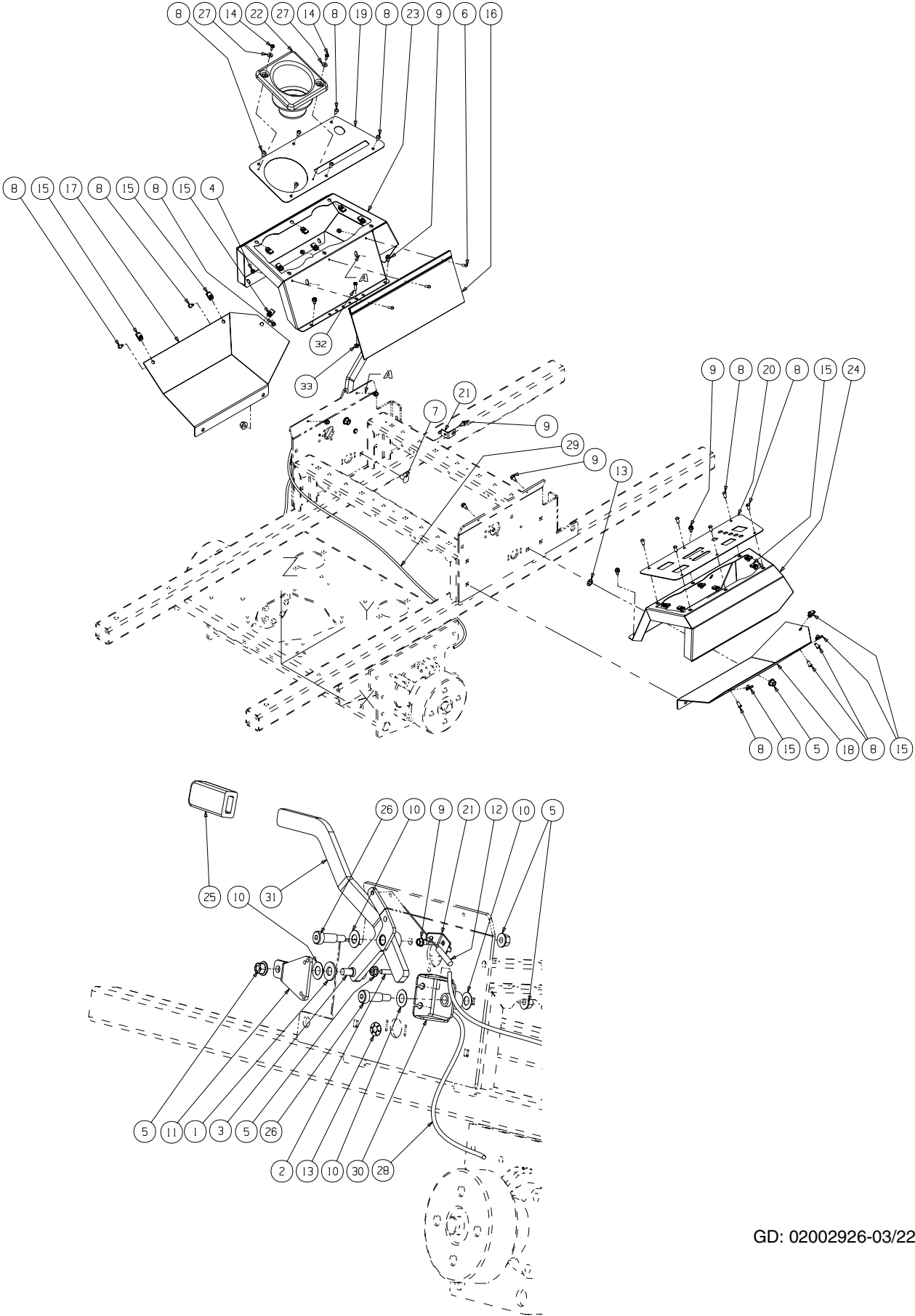
GD: 02002828-03/13/07

Hydro Hose and Pump Assembly- Parts List for Figure 4

| Ref. No. | Part No. | Description | Qty. |
|----------|----------|--|------|
| 1 | 02002392 | Hose Clamp, 1/2 | 12 |
| 2 | 00012428 | Washer lock 3/8 zinc | 8 |
| 3 | 00020628 | Key, 3/16" x 7/8" | 2 |
| 4 | 00022560 | Flange Lock Hex Nut, 3/8-16 | 22 |
| 5 | 00030261 | Cap, Hydro Oil Tank | 1 |
| 6 | 01000364 | Hex Carriage Screw, 3/8-16, 1.75 | 2 |
| 7 | 01000369 | Hex Cap Screw, 3/8 -16 x 1.25 | 4 |
| 8 | 01000372 | Carriage Bolt, 3/8-16 x .75 LG. | 6 |
| 9 | 01000643 | Carriage Bolt, 3/8-16 x 1 | 4 |
| 10 | 01002010 | Carriage Screw, 3/8-16 x 1.25 | 4 |
| 11 | 01001618 | Strut Frame | 2 |
| 12 | 01004192 | Oil Pan Drain Plug w/ Seal | 1 |
| 13 | 01006948 | Hydro Wheel Motor Backup Plate | 2 |
| 14 | 01007309 | Hex Nut, 3/8-24 | 2 |
| 15 | 01007791 | Socket Head Capscrew, 1/2-13; 3-1/2 | 8 |
| 16 | 01009775 | Hydro Motor Spacer | 2 |
| 17 | 02000296 | Grommet Fitting, .54 ID x .78 OD | 1 |
| 18 | 02000401 | Spring Extension, .740 OD x 2.656 | 2 |
| 19 | 02000841 | Socket Low Head Cap Screw, 1/4-20 x 0.75 | 2 |
| 20 | 02000905 | Hydro Pump, BDP-12, RH | 1 |
| | 01009631 | Kit, Fan | 1 |
| 21 | 02000906 | Hydro Pump, BDP-12, LH | 1 |
| | 01009631 | Kit, Fan | 1 |
| 22 | 02001151 | Fitting Elbow Spur, 5/8 x 1/2 | 1 |
| 23 | 02001160 | Fitting Elbow, 9/16 x 1/2 | 4 |
| 24 | 02001169 | Fan Pump Shroud | 2 |
| 25 | 02001172 | Hydro Pump Pulley | 2 |
| 26 | 02001176 | Short Pressure Hose Assembly | 2 |
| 27 | 02001177 | Long Pressure Hose Assembly | 2 |
| 28 | 02001489 | Hydro Motor Frame Assembly | 1 |
| 29 | 02001715 | Adaptor Fitting, 8 x 10 | 4 |
| 30 | 02002003 | Adaptor, 8 x 8 | 4 |
| 31 | 02002257 | Hydraulic In-Tank Filter includes: | 1 |
| | 02002258 | Replacement Filter | 1 |
| 32 | 02002557 | Fitting, 3/4 ORB x 1/2 Tube | 1 |
| 33 | 02002703 | Hydraulic Tank Assembly | 1 |
| 34 | 02003826 | Rear Cable Mounting Bracket | 2 |
| 35 | 02002967 | Hydro Motor, Left Hand Assembly w/ Brake & Drum | 1 |
| 36 | 02002968 | Hydro Motor, Right Hand Assembly w/ Brake & Drum | 1 |
| 37 | 00083192 | Idler Washer | 2 |
| 38 | -- | Fuel Hose, .50 ID x .75 OD (in inches) | 79 |
| 39 | 02001175 | Tee Fitting, 1/2 | 2 |
| 40 | 00006168 | Flat Washer, 3/8 | 2 |

NOTE: Lubricant, 02002058 Quarts, 2.00

Brake Assembly - Figure 5

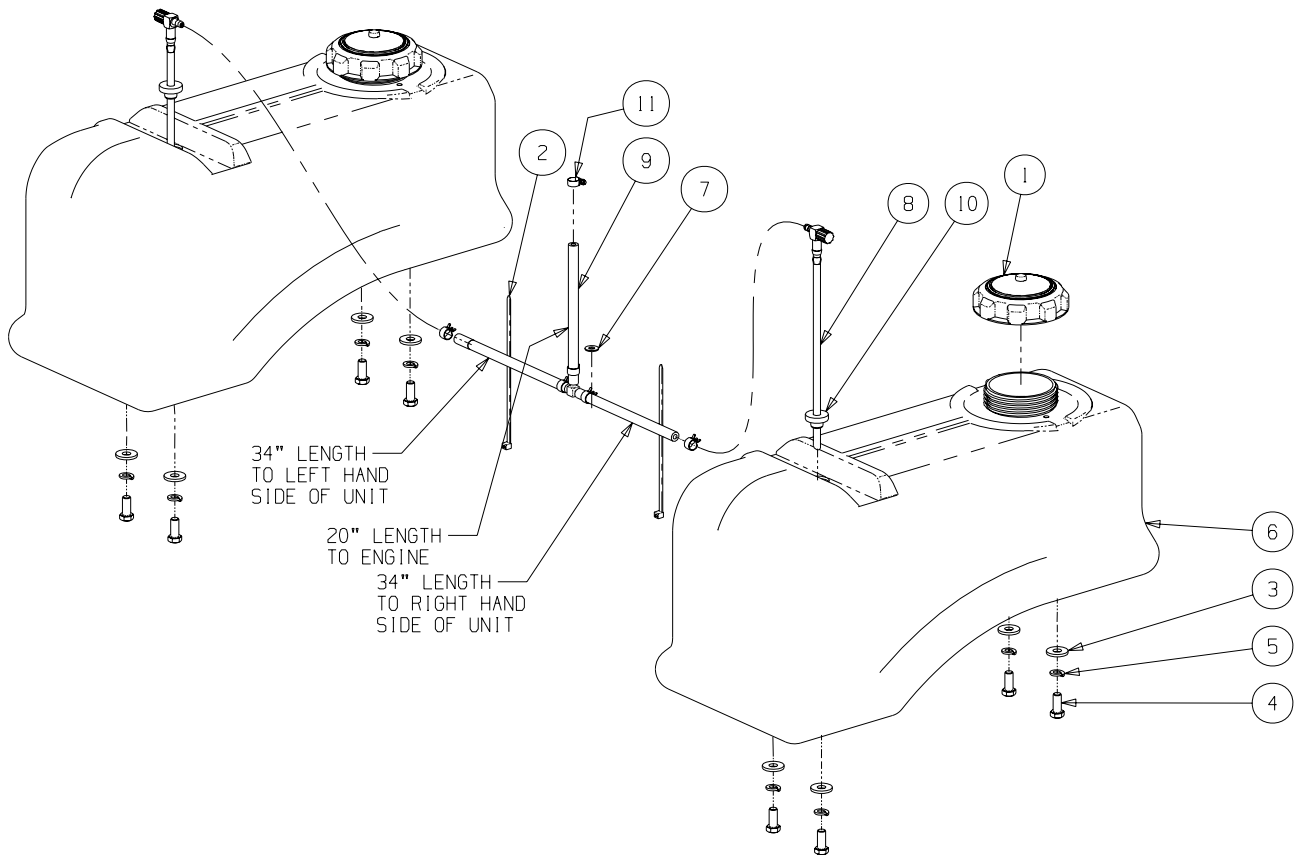


GD: 02002926-03/22/07

Brake Assembly - Parts List for Figure 5

| Ref. No. | Part No. | Description | Qty. |
|----------|----------|--|------|
| 1 | 00012577 | Washer, 1/2 Zinc | 1 |
| 2 | 01000643 | Carriage Bolt, 3/8-16, 1.00 | 1 |
| 3 | 00011450 | Shoulder Bolt, 1/2 x 1/2 | 1 |
| 4 | 00014608 | Lock Nut, Nylon Insert, 10-32 | 3 |
| 5 | 00022560 | Flange Lock Hex Nut, 3/8-16 | 6 |
| 6 | 00030906 | Phillips Head Machine Screw, 10-32 x 5/8 | 3 |
| 7 | 01000372 | Carriage Bolt, 3/8-16 x .75 | 2 |
| 8 | 01000443 | Screw Button Head, 1/4-20 x .5 | 18 |
| 9 | 01000628 | Screw, TT, 1/4-20, 0.5, Hex Index Washer | 10 |
| 10 | 01000930 | Washer, .508 ID x 1.0 OD x .020 | 4 |
| 11 | 02003841 | Centering Bracket | 1 |
| 12 | 01008198 | Left Hand Brake Cable | 1 |
| 13 | 01008225 | Push Retainer, 3/8 | 2 |
| 14 | 01008531 | Screw, #10-32 x 0.500 | 2 |
| 15 | 01008539 | U-Nut, 1/4-20 | 18 |
| 16 | 02000362 | Bag, Debris Storage | 1 |
| 17 | 02002797 | Lower Panel, LH | 1 |
| 18 | 02002796 | Lower Panel, RH | 1 |
| 19 | 02002823 | Control Panel Cover, LH | 1 |
| 20 | 02002889 | Control Panel Cover, RH | 1 |
| 21 | 02002864 | Brake Cable Mounting Bracket | 2 |
| 22 | 02002874 | Cup Holder | 1 |
| 23 | 02002971 | Control Panel, LH | 1 |
| 24 | 02002972 | Control Panel, RH | 1 |
| 25 | 02003010 | Parking Brake Grip | 1 |
| 26 | 02003603 | Shoulder Bolt, 1/2 x 1.00, 3/8-16 | 2 |
| 27 | 02003725 | Washer, 3/16 | 2 |
| 28 | 02003770 | Brake Cable, LH | 1 |
| 29 | 02003774 | Brake Cable, RH | 1 |
| 30 | 02003776 | Brake Cable Bracket | 1 |
| 31 | 02003782 | Brake Lever | 1 |
| 32 | 00013131 | Screw, Hex, Cap, 1/4-20 x .75 | 1 |
| 33 | 01002766 | Lock Nut, 1/4-20 | 1 |

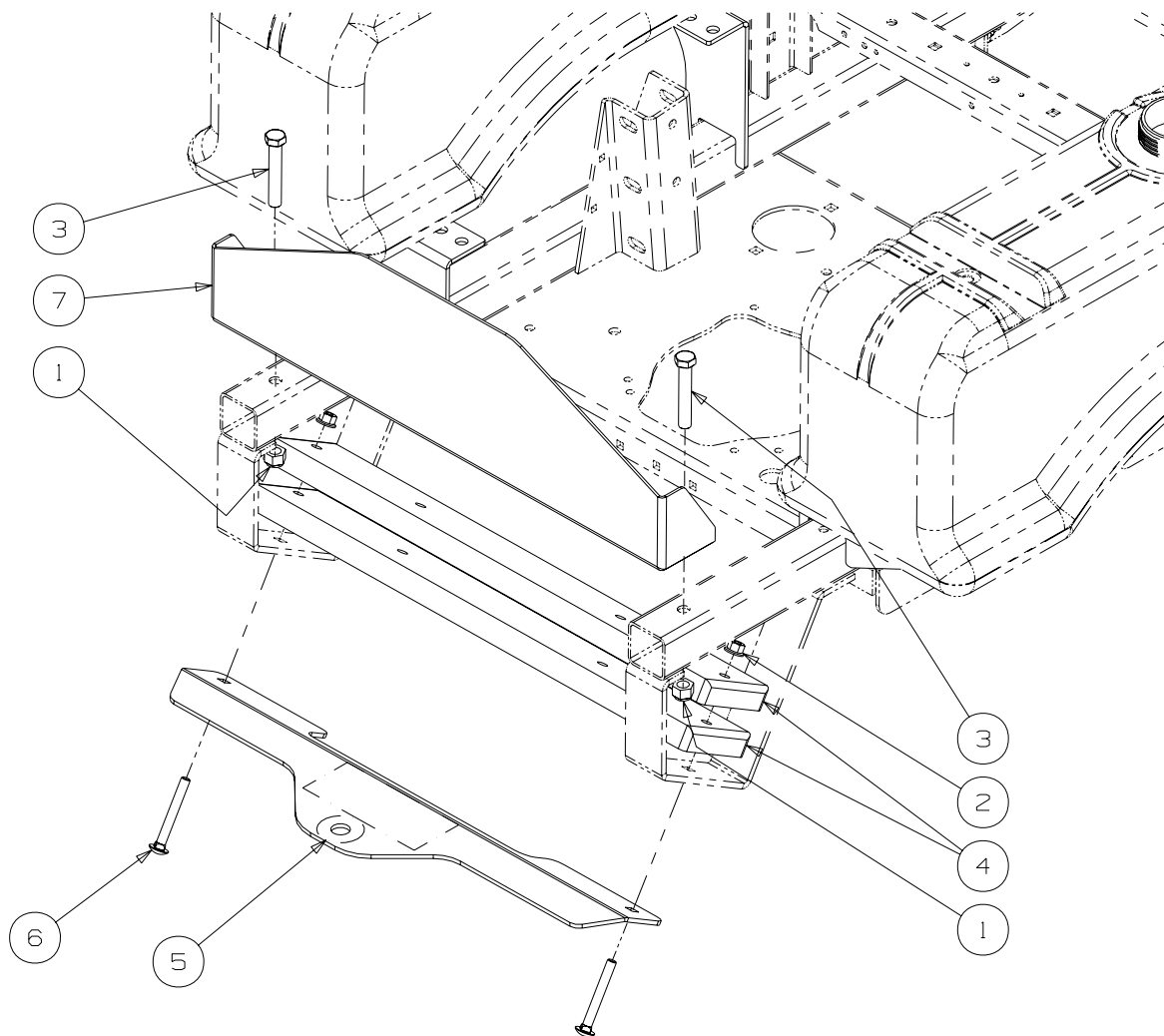
Fuel Tank Assembly - Figure 6 and Parts List



GD: 02001910-01/11/07

| Ref. No. | Part No. | Description | Qty. |
|----------|----------|------------------------------------|------|
| 1 | 02003809 | Fuel Cap, 3.5, Tethered | 2 |
| 2 | 00012470 | Cable Tie | 2 |
| 3 | 01000723 | Flat Washer, .406 ID, 1.0 OD, .105 | 8 |
| 4 | 01000368 | Hex, Cap Screw, 3/8-16, .88 | 8 |
| 5 | 00012157 | Lock Washer, 3/8 | 8 |
| 6 | 02003842 | Fuel Tank | 2 |
| 7 | 01000600 | Flat Washer, 1.4 x .630 x .0515 | 1 |
| 8 | 01007425 | Fuel Fitting | 2 |
| 9 | 02001908 | Fuel Hose Assembly includes: | 1 |
| | -- | Hose, 1/4" Fuel Line (in inches) | 88 |
| | 00012235 | Clamp, Union | 5 |
| | 01003473 | Tee Fitting, Fuel | 1 |
| 10 | 02002253 | Grommet, Fuel Tank | 2 |
| 11 | 01000215 | Hose Clamp, SAE #4: 1/4-5/8, SS | 1 |

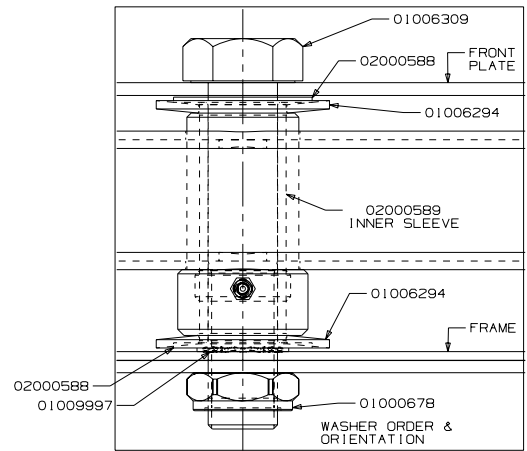
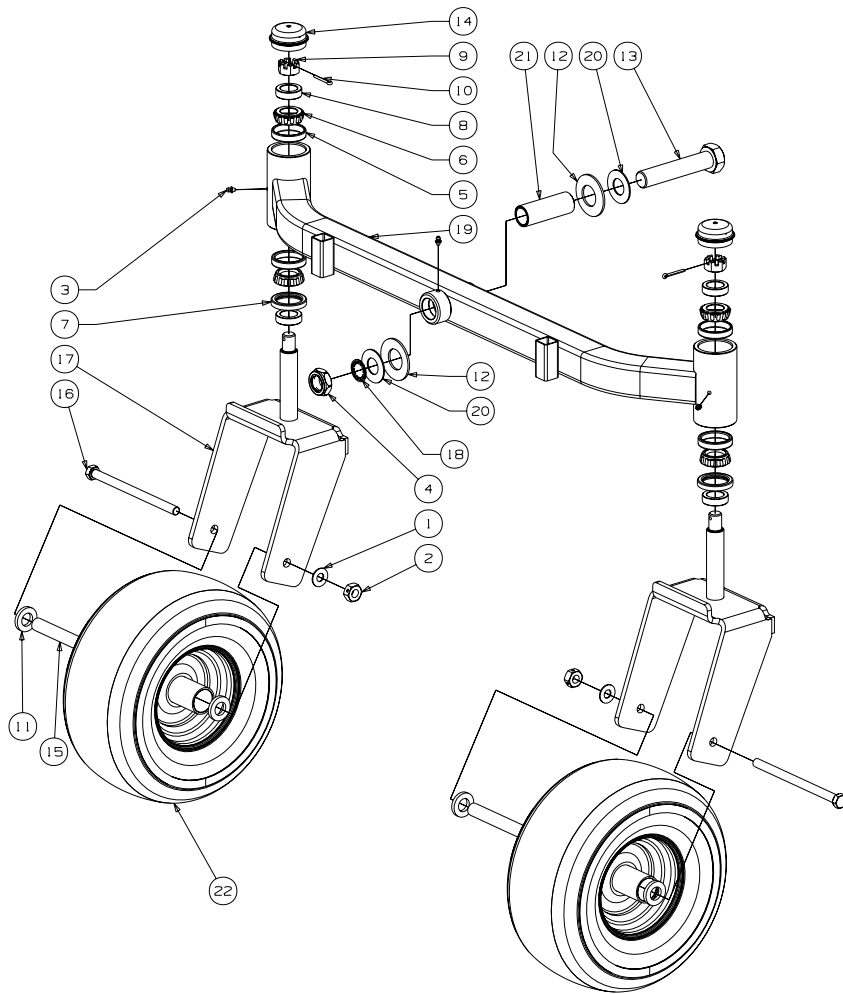
Rear Bumper - Figure 7 and Parts List



GD: 02003564-10/25/06

| Ref. No. | Part No. | Description | Qty. |
|----------|----------|------------------------------|------|
| 1 | 00012428 | Hex Nut, 1/2-13, Insert Lock | 2 |
| 2 | 00022560 | Nut, Hex 3/8-16 Flange Lock | 2 |
| 3 | 00030046 | HHCS, 1/2-13, 3.00 | 2 |
| 4 | 01009992 | Bar, Weight | 2 |
| 5 | 02002536 | Hitch Bracket | 1 |
| 6 | 02003570 | Carriage Bolt, 3/8-16 x 3.00 | 2 |
| 7 | 02003634 | Rear Bumper | 1 |

Front Caster Assembly - Figure 8

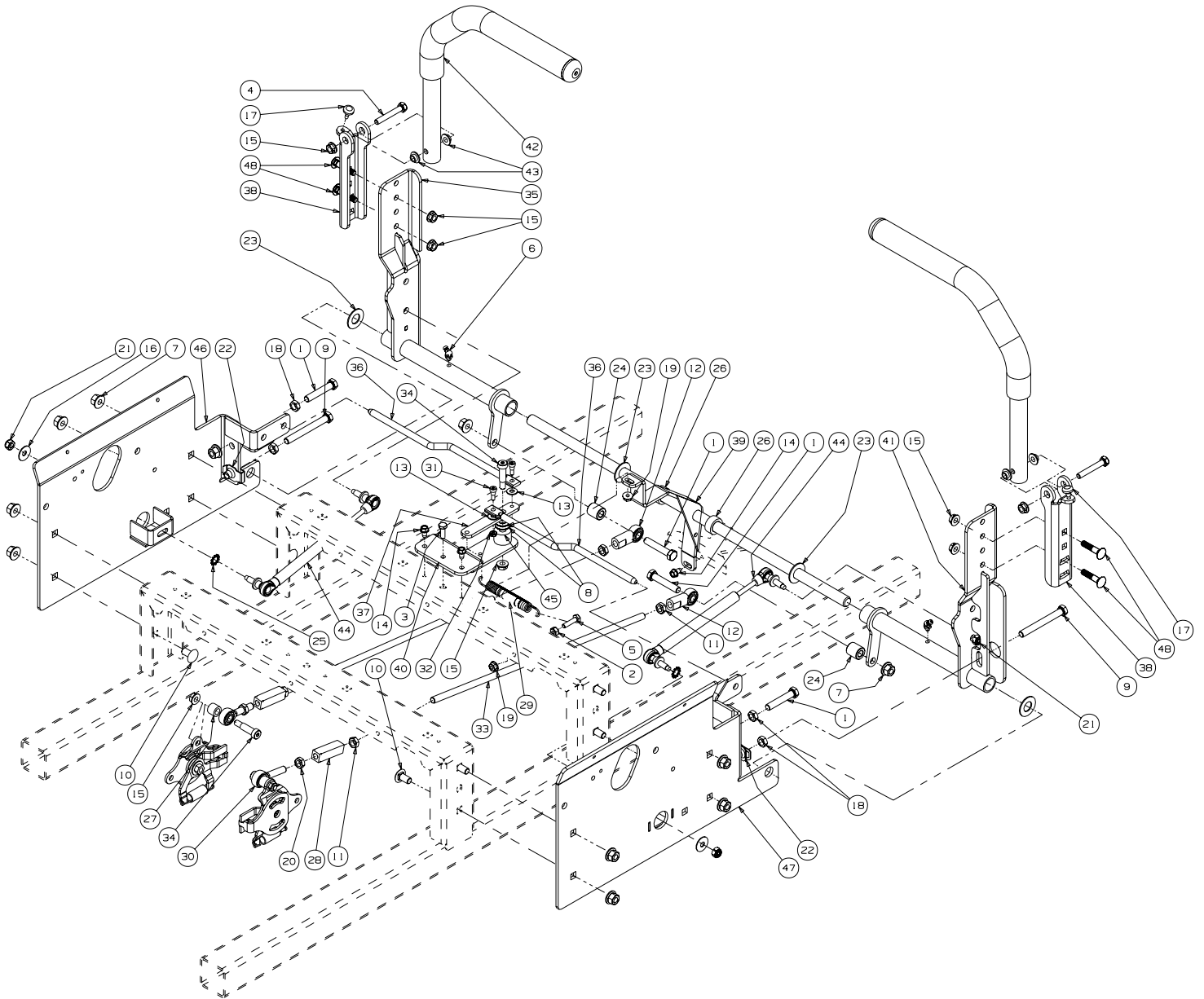


GD: 02002820-10/04/06

Front Caster Assembly - Parts List for Figure 8

| Ref. No. | Part No. | Description | Qty. |
|----------|----------|---|------|
| 1 | 00012577 | Washer, 1/2 x 1 Shim | 2 |
| 2 | 00023287 | Nut, 1/2-20, Center Lock | 2 |
| 3 | 00060078 | Grease Fitting, 1/4-28 x 3/16 | 3 |
| 4 | 01000678 | Nut, Jam, 1.0-14, Insert Lock | 1 |
| 5 | 01002620 | Cup Bearing | 4 |
| 6 | 01002621 | Bearing Cone | 4 |
| 7 | 01002622 | Seal | 2 |
| 8 | 01002624 | Ring Seal | 4 |
| 9 | 01002626 | Slotted Nut, 3/4-16 | 2 |
| 10 | 01002627 | Cotter Pin, 5/32, 1.25 | 2 |
| 11 | 01003123 | Spacer, .812 ID x .218LG | 4 |
| 12 | 01006294 | Bell Washer, 1.25 ID x 2.5 x .157 | 2 |
| 13 | 01006309 | Hex Cap Screw, 1-14 x 5.0 | 1 |
| 14 | 01006347 | Grease Cap, 1.986 OD | 2 |
| 15 | 01006912 | Wheel Spacer | 2 |
| 16 | 01006961 | HHCS, 1/2-20, 7.50 | 2 |
| 17 | 01007407 | Yoke, Caster Wheel | 2 |
| 18 | 01009997 | Retainer Extension, Self Locking | 1 |
| 19 | 02000439 | Front Axle Assembly | 1 |
| 20 | 02000588 | Flat Washer, 1.00 ID | 2 |
| 21 | 02000589 | Spacer, 1.005 ID x 1.25 OD x 3.6 | 1 |
| 22 | 02002821 | Wheel, 13 x 6.50 x 6.0, Beige, includes | 2 |
| | 02002108 | Tire | 1 |
| | 02002106 | Roller Bearings | 2 |
| | 02002107 | Retainer Bushings | 2 |

Control Assembly- Figure 9

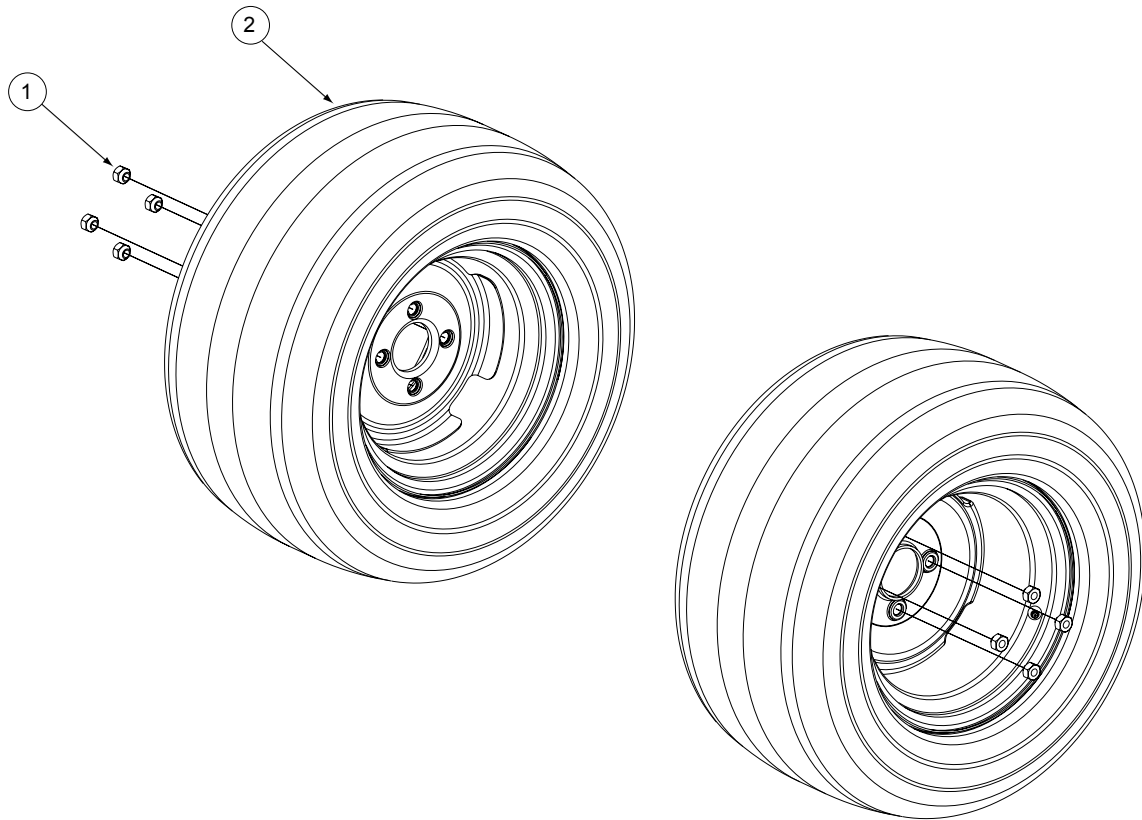


GD: 02002550-02/12/07

Control Assembly - Parts List for Figure 9

| Ref. No. | Part No. | Description | Qty. | Ref. No. | Part No. | Description | Qty. |
|----------|----------|--|------|----------|-----------|---------------------------------------|------|
| 1 | 00002528 | Hex Cap Screw, 3/8-16 x 2.00 | 4 | 27 | 01007312 | Spacer, .625 OD x .385 ID x 1/2 | 2 |
| 2 | 00012186 | Hex Nut, 1/4-20 | 1 | 28 | 01007734 | Turnbuckle | 2 |
| 3 | 00013131 | Hex Cap Screw, 1/4-20, .75 | 1 | 29 | 732-0470A | Extension Spring, .53 OD x 4.75 | 1 |
| 4 | 00013198 | Hex Cap Screw, 5/16-18 x 2.00 | 2 | 30 | 01008367 | B/Joint, 3/8-24, Left Hand Female | 2 |
| 5 | 00013416 | HHCS, 1/4-20 x 1.00 | 1 | 31 | 01009322 | Shoulder Bolt, 1/4 x 1/4 | 2 |
| 6 | 00021958 | Grease Fitting, 1/4-28, 45 degree | 2 | 32 | 01009377 | Nut w/ Star Washer, 10-24 | 2 |
| 7 | 00022560 | Hex Nut, 3/8-16, Lock Flange | 12 | 33 | 01009560 | Control Rod, 3/8 x 17.312 | 2 |
| 8 | 00061053 | Washer, 3/8, SS | 2 | 34 | 02000069 | Screw, Shoulder Control Rod | 3 |
| 9 | 02003666 | Hex Cap Screw, 3/8-16 x 3.50 | | 35 | 02002931 | Lapbar Control Assembly, LH | 1 |
| 10 | 01000372 | Carriage Bolt, 3/8-16 x .75 | 8 | | 01004265 | Bearing | 2 |
| 11 | 01000450 | Hex Jam Nut, 3/8-24 | 4 | 36 | 02002542 | Brake/Control Rod | 2 |
| 12 | 01000451 | B/Joint, 3/8-24, Right Hand Female | 2 | 37 | 02002543 | Lapbar Control Arm | 1 |
| 13 | 01000600 | Flat Washer, 1.4 x .630 x .0515 | 2 | 38 | 02002545 | Lapbar Pivot Bracket | 2 |
| 14 | 01000628 | Screw, TT, 1/4-20, 0.5, Hex Index Washer | 3 | 39 | 02002555 | Lapbar Control Shaft Assembly | 1 |
| 15 | 01000635 | Nut, Lock, HexFlange, 5/16-18 | 9 | 40 | 02002657 | Lapbar/Brake Control Mounting Bracket | 1 |
| 16 | 01000960 | Belle Washer, .325 x .930 x .045 | 2 | 41 | 02002932 | Lapbar Control Assembly, RH | 1 |
| 17 | 01001170 | Rubber Bumper, .62 OD x .22 Thick | 2 | | 01004265 | Bearing | 2 |
| 18 | 01002511 | Nut, 3/8-16, Jam | 4 | 42 | 02003024 | Lapbar Assembly includes: | 2 |
| 19 | 01002766 | Hex Flange Lock Nut, 1/4-20 | 2 | | 02002549 | Control Handle Pivot Tube | 2 |
| 20 | 01002986 | Nut, 3/8-24, Jam, LH Third | 2 | | 02002662 | Grip, 1.0 | 2 |
| 21 | 01003561 | Nut, Hex, Center Lock, M8 | 4 | 43 | 02003419 | Bushing, .310 x .172 x .688 x .06 | 4 |
| 22 | 01003947 | U-Nut, 3/8-16, .75 | 2 | 44 | 02003653 | Cylinder Return to Neutral | 2 |
| 23 | 01004003 | Flat Washer, 5/8 Nylon | 4 | 45 | 02003664 | Spacer, .405 ID x 1.0 OD x .72 | 1 |
| 24 | 01004129 | Spacer, .385 ID x .75 OD x .875 | 2 | 46 | 02003885 | Side Panel, Control, Left | 1 |
| 25 | 01005851 | External Washer, 3/8 | 2 | 47 | 02003880 | Side Panel, Control, Right | 1 |
| 26 | 01006350 | Shaft Collar | 2 | 48 | 710-0262 | Carriage Bolt, 5/16-18 x 1.50 | 4 |

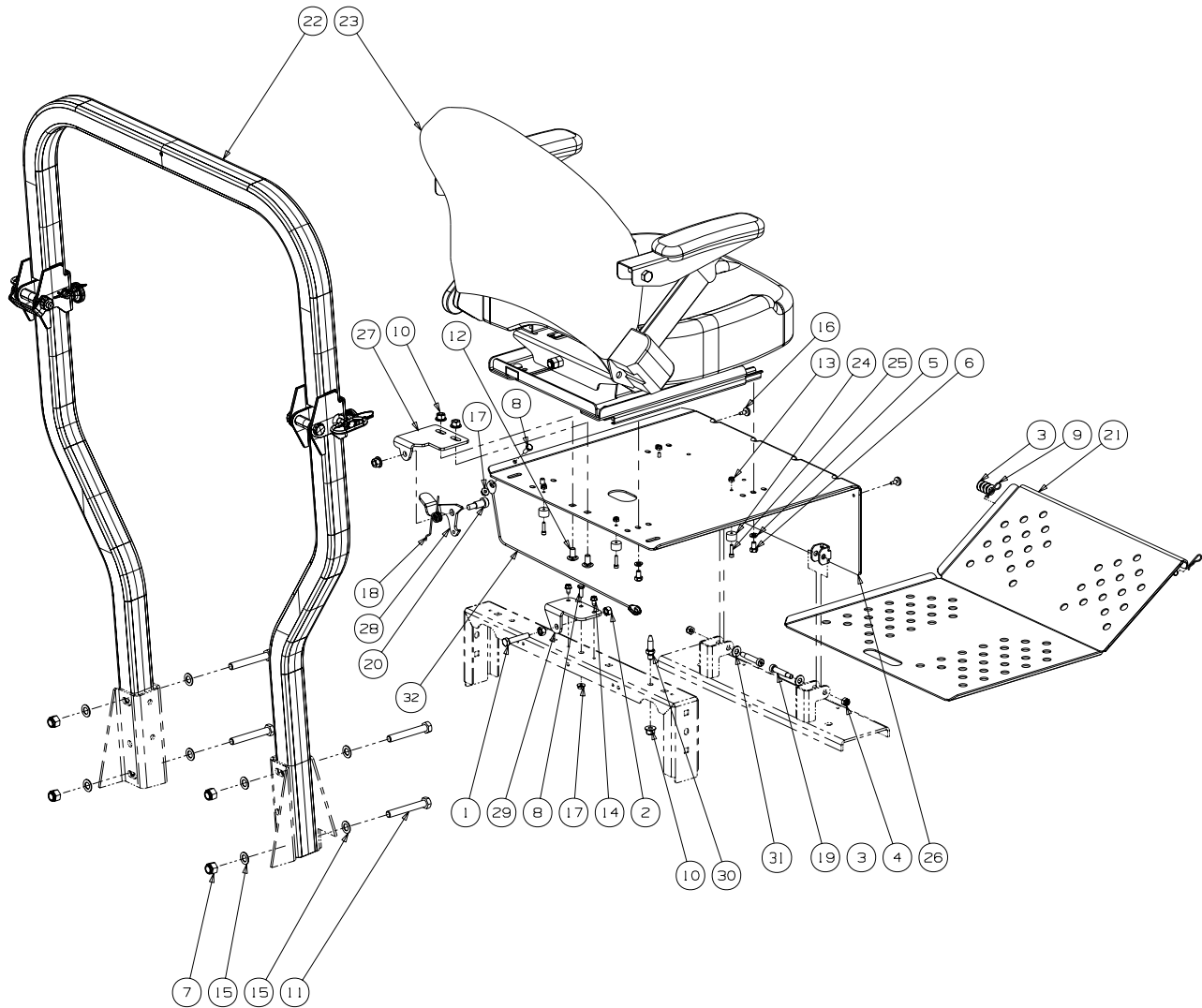
54" Wheel Assembly - Figure 10 and Parts List



GD: 02002669-10/04/06

| Ref. No. | Part No. | Description | Qty. |
|-----------------------|----------|---|------|
| 1 | 00012187 | Lug Nut, 1/2-20 | 8 |
| 2 | 02002668 | Wheel Assembly, 24 x 12.00-12, Beige | 2 |
| | | Includes: | |
| | 00073975 | Tire, 24 x 12.00-12 | |
| | | Rim, 12 Dia x 8.50 width | |
| OPTIONAL TIRES | | | |
| | 01002182 | Wheel Assembly, 24 x 12.00-12, Turf Saver | |
| | 01004473 | Tire, 24 x 12.00-12, Turf Saver | |

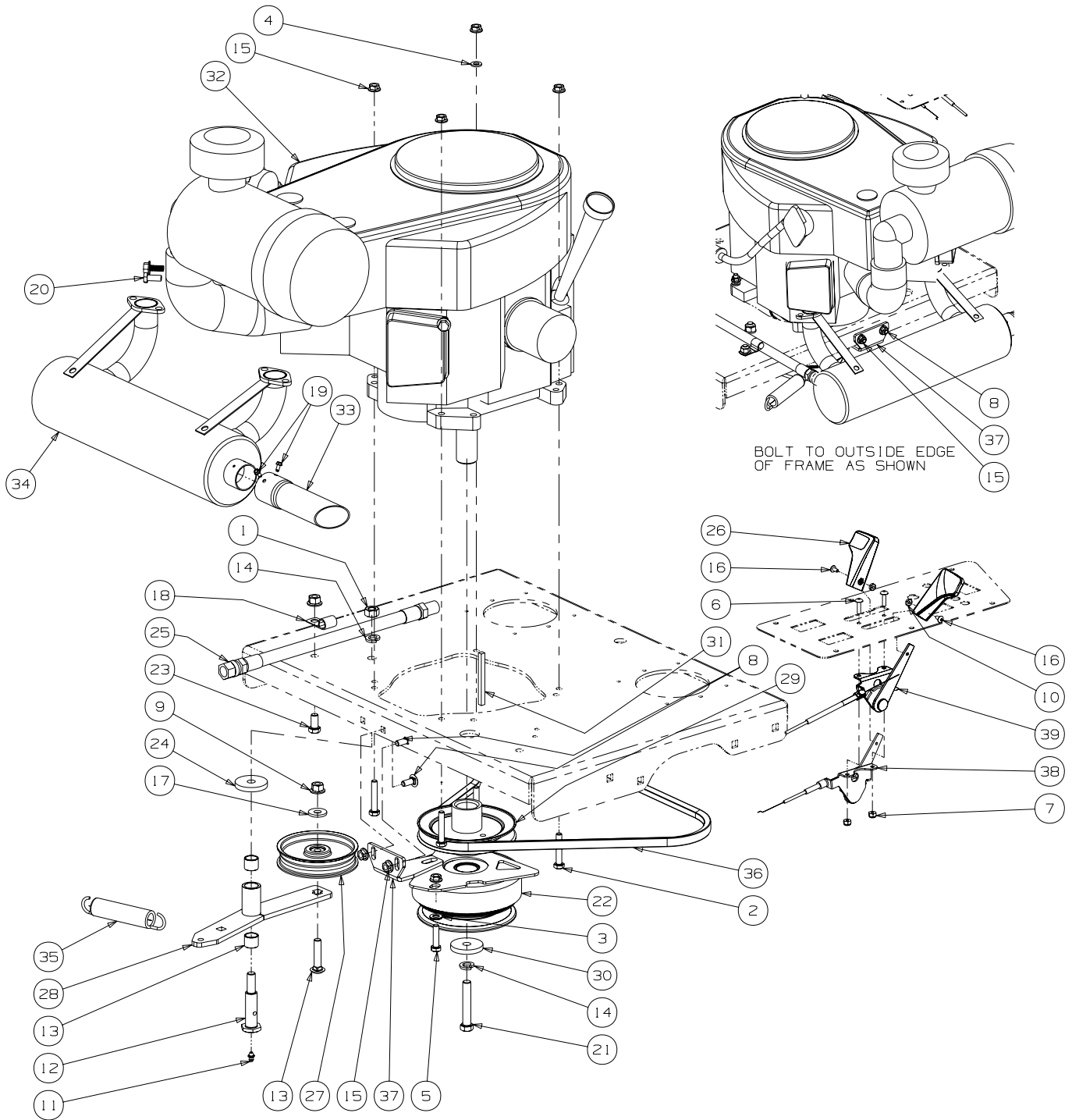
Seat/Floor Panel Assembly- Figure 11 and Parts List



GD: 02002559-03/22/07

| Ref. No. | Part No. | Description | Qty. | Ref. No. | Part No. | Description | Qty. |
|----------|-----------|--|------|----------|----------|------------------------------------|------|
| 1 | 00002528 | Hex Cap Screw 3/8-16 x 2.00 | 1 | 17 | 01002766 | Lock Nut, 1/4-20 | 2 |
| 2 | 00006131 | Hex Nut, 3/8-16 | 2 | 18 | 01008140 | Deck Lift Spring, Left Hand | 1 |
| 3 | 00012158 | Washer | AR | 19 | 01009459 | Shoulder Bolt, .375 x 1.50 | 2 |
| 4 | 712-04063 | Nylock Nut, 5/16-18 | 2 | 20 | 02002091 | Shoulder Bolt, 1/2 x 3/4, 3/8-16 | 1 |
| 5 | 00012168 | Lock Washer, 5/16 | 4 | 21 | 02002335 | Floor Panel Assembly | 1 |
| 6 | 00012178 | Hex Cap Screw, 5/16-18 x 1/2 | 4 | 22 | 02002714 | Foldable Rops Assembly | 1 |
| 7 | 00012428 | Nut, 1/2-13, Nylon Insert | 4 | 23 | 02002942 | Seat w/ Seat Belt & Suspension | 1 |
| 8 | 00013131 | Screw, Hex, Cap, 1/4-20 x .75 | 2 | 24 | 02002963 | Rubber Stop with Washer | 4 |
| 9 | 00021956 | Hair Pin, 3/8-1/2 | 2 | 25 | 02002964 | Standard Cap Screw, #10-24 x .75 | 4 |
| 10 | 00022560 | Flange Lock, Hex Nut, 3/8-16 | 4 | 26 | 02002344 | Seat Plate Assembly | 1 |
| 11 | 01000226 | Hex Cap Screw, 1/2-13 x 3.50 | 4 | 27 | 02003748 | Seat Latch Bracket | 1 |
| 12 | 01000372 | Carriage Bolt, 3/8-16 x .75 Long | 2 | 28 | 02003732 | Latch Lever Bracket | 1 |
| 13 | 01000523 | Nut, #10-24, Nylon Lock | 4 | 29 | 02003739 | Latch Bracket | 1 |
| 14 | 01000628 | Screw, TT, 1/4-20, 0.5, Hex Index Washer | 2 | 30 | 02003745 | Adjustable Stud | 1 |
| 15 | 01000873 | Washer, .536 ID x .930 OD x .05 | 8 | 31 | 01000723 | Flat Washer, .406 ID, 1.0 OD, .105 | 2 |
| 16 | 01001170 | Rubber Bumper, .62 OD x .22 Thick | 2 | 32 | 02004062 | Cable Support | 1 |

23HP Kawasaki Engine Assembly - Figure 12



| Description | Part Number |
|--------------------|---------------|
| Air Filter | KM-11013-7020 |
| Air Filter (Inner) | KM-11013-7019 |
| Fuel Filter | KM-49019-7001 |
| Oil Filter | KM-49065-2078 |
| Spark Plug (23HP) | KM-BPR4ES |

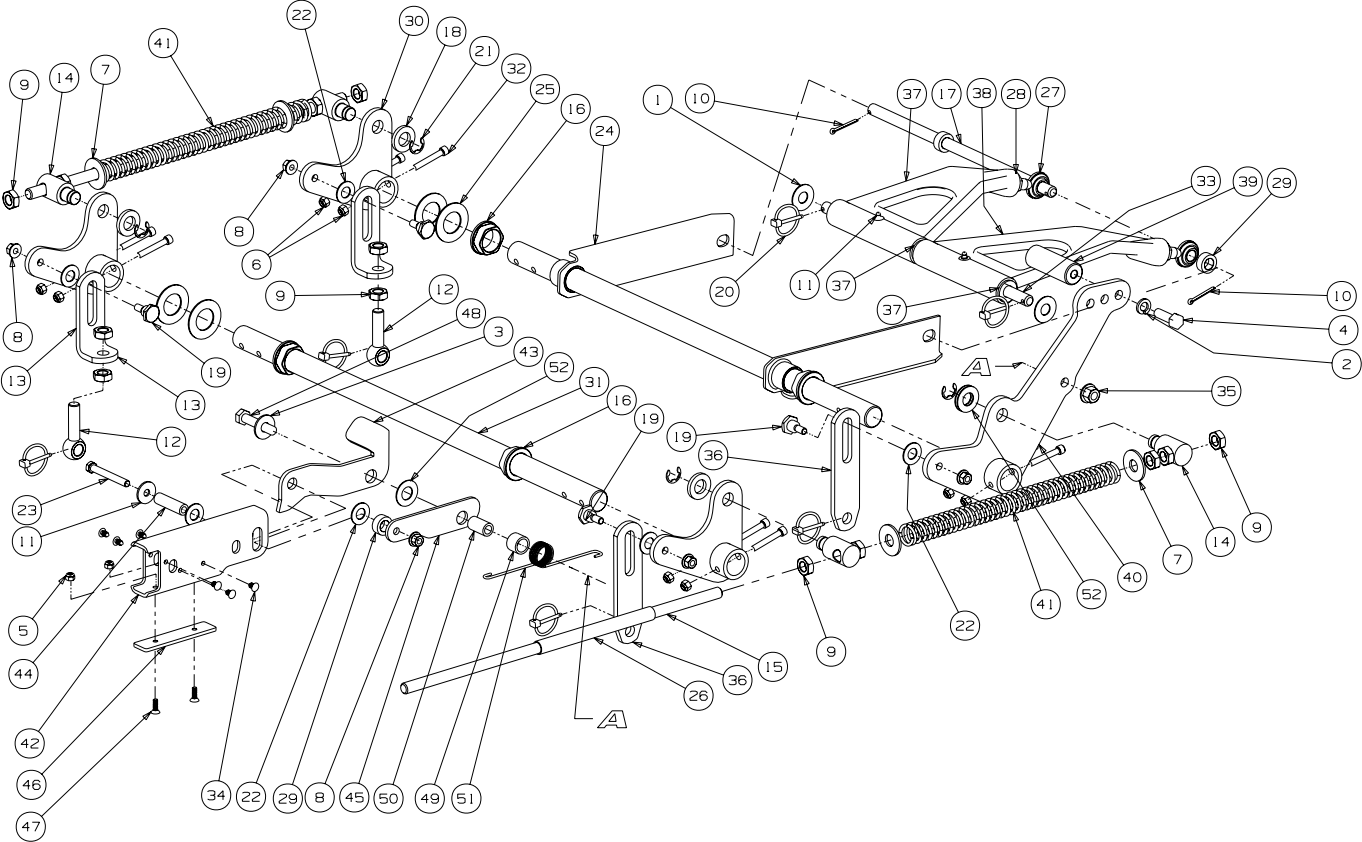
GD: 02003523-11/08/06

23HP Kawasaki Engine Assembly - Parts List for Figure 12

| Ref No | Part No. | Description | Qty. |
|--------|----------|---------------------------------------|------|
| 1 | 00005763 | Hex Nut, 7/16-14 | 1 |
| 2 | 00006129 | HHCS, 5/16-18, 1-3/4 | 4 |
| 3 | 00009812 | Flat Washer, 5/16 | 1 |
| 4 | 00012169 | Flat Washer, .320 ID x .591 OD x .078 | 1 |
| 5 | 00013116 | HHCS, 5/16-18 x 1-1/4 | 1 |
| 6 | 00014602 | Round Hd. Machine Screw, 10-32 x 3/4 | 2 |
| 7 | 00014608 | Lock Nut, Nylon Insert, 10-32 | 2 |
| 8 | 00020508 | Carriage Bolt, 5/16-18 x .75 | 2 |
| 9 | 00022560 | Flange Lock, Hex Nut, 3/8-16 | 2 |
| 10 | 00060056 | Nut Washer, W/Star, 8-32 | 2 |
| 11 | 00060078 | Grease Fitting, 1/4-28 x 3/16 | 1 |
| 12 | 01000302 | Shoulder Screw, 7/16-14 | 1 |
| 13 | 01000364 | Hex Carriage Screw, 3/8-16, 1.75 | 1 |
| 14 | 01000389 | Lock Washer, 7/16 | 2 |
| 15 | 01000635 | Hexflange Lock Nut, 5/16-18 | 7 |
| 16 | 01000721 | Machine Screw, 8-32, .375 | 2 |
| 17 | 01000723 | Flat Washer, .406 ID, 1.0 OD, .105 | 1 |
| 18 | 01000728 | Clip, Heat Shield Cable | 1 |
| 19 | 01000811 | Screw, #8-32 x 0.375 | 2 |
| 20 | 01000981 | Hex Head Cap Screw, M10 x 1.25, 20mm | 1 |
| 21 | 01001395 | Capscrew, 7/16-20 x 2.50 | 1 |
| 22 | 01001979 | Clutch Brake, 1.125 ID | 1 |
| 23 | 01002601 | Hex Cap Screw, 3/8-16, .750 | 1 |
| 24 | 01003269 | Flat Washer, 7/16 ID x 1.75 OD x .25 | 1 |
| 25 | 01003283 | Oil Drain Hose | 1 |
| 26 | 01004004 | Control Throttle Knob | 2 |
| 27 | 01004081 | Flat Pulley with Flanges | 1 |
| 28 | 01005006 | Engine Idler Arm Assembly Includes | 1 |
| | 01000308 | Bearing | 2 |
| 29 | 01005104 | Pump Drive Pulley | 1 |
| 30 | 01005314 | Flat Washer, 7/16 ID x 1.75 OD x .25 | 1 |
| 31 | 01005856 | Key, 1/4 x 1/4 x 3 | 1 |
| 32 | 01008523 | 23HP Engine, Kawasaki | 1 |
| 33 | 01008623 | Muffler Accessory Exhaust Tube | 1 |
| 34 | 01009299 | Muffler Accessory, Kawasaki | 1 |
| 35 | 01009635 | Extension Spring, .98 OD x 5.00 | 1 |
| 36 | 02000068 | V Belt, A Section x .48.5 | 1 |
| 37 | 02001994 | Retainer Clutch Assembly, Ogura | 1 |
| 38 | 02003421 | Throttle, Control Cable | 1 |
| 39 | 02003422 | Choke, Control Cable, 43.0 | 1 |

Note: Engine Oil 15w40

Lift Assembly - Figure 13

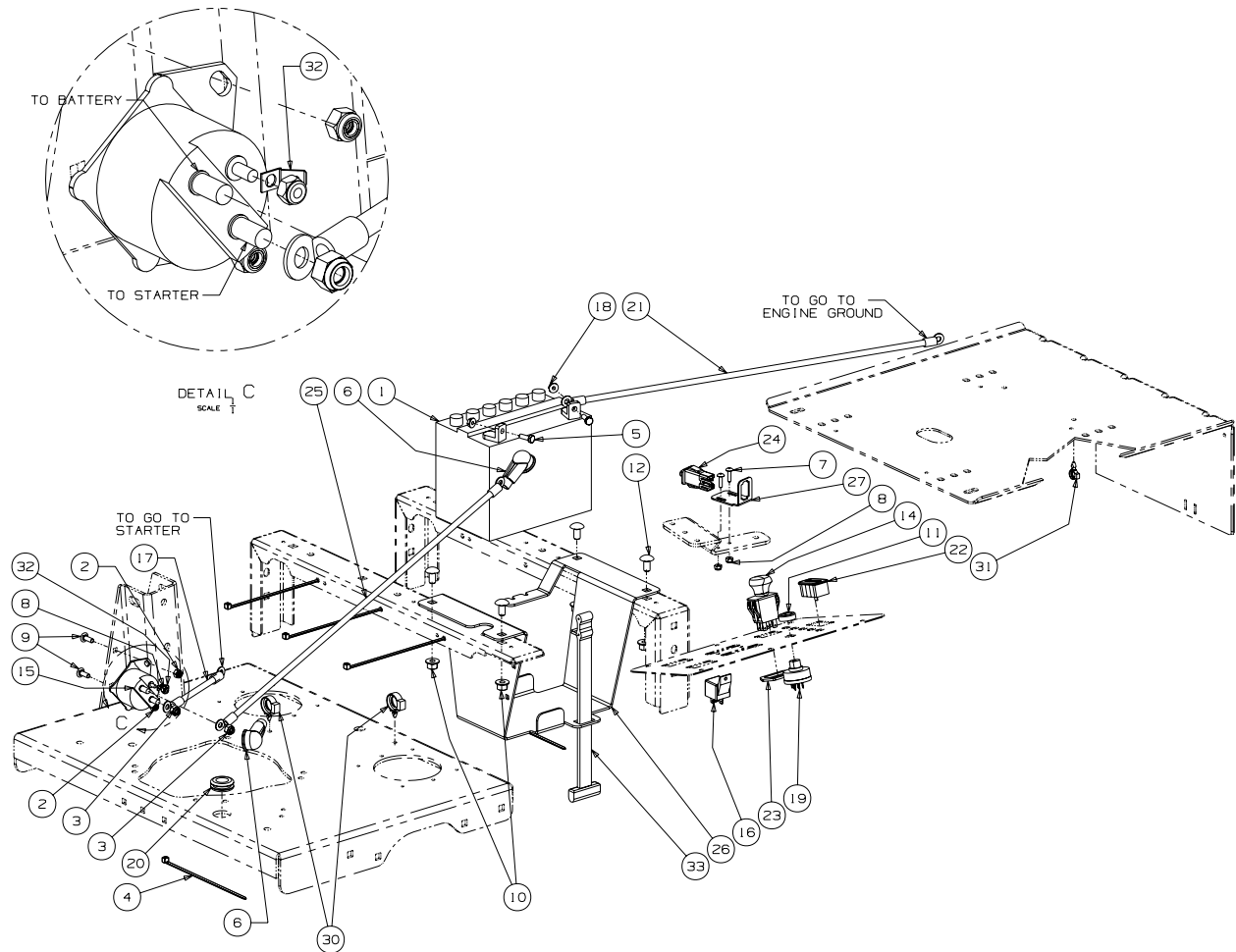


GD: 02002660-03/16/07

Lift Assembly - Parts List for Figure 13

| Ref. No. | Part No. | Description | Qty. |
|----------|----------|---|------|
| 1 | 00002766 | Washer, 1.5 x .655 x .055 | 2 |
| 2 | 00010734 | Lock Washer, 1/2 | 1 |
| 3 | 00011459 | Flat Washer, 1/2 | 1 |
| 4 | 00011951 | Hex Cap Screw, 1/2-13 x 1.50 | 1 |
| 5 | 00012152 | Lock Nut w/Nylon Insert | 2 |
| 6 | 00012165 | Nut, 5/16-18, Nylock | 8 |
| 7 | 00013432 | Flat Washer, 5/8 | 4 |
| 8 | 00022560 | Hex Nut, Flange Lock, 3/8-16 | 5 |
| 9 | 00035632 | Jam Nut, 5/8-11 | 14 |
| 10 | 00060018 | Cotter Pin, 3/16 x 1-1 | 2 |
| 11 | 01000872 | Flat Washer, 1.25 x .411 x .100 | 1 |
| 12 | 01001744 | Eye Bolt, 5/8ID | 2 |
| 13 | 01007255 | Eye Bolt Mount Link, 5/8 ID | 2 |
| 14 | 01001855 | Ferule Lift | 4 |
| 15 | 01001857 | Lift Connector Rod | 2 |
| 16 | 01001930 | Hex Flange Bearing, 1.25 ID | 4 |
| 17 | 01002586 | Front Lift Link, Rod Mount | 1 |
| 18 | 01003123 | Spacer, .812 ID x .268 Lg. | 3 |
| 19 | 01003535 | Shoulder Screw, 0.625 OD x .437 Lg. | 4 |
| 20 | 01003993 | Linch Pin, 3/16 Dia. | 6 |
| 21 | 01003994 | E Clip, 3/4 Dia. | 4 |
| 22 | 01004003 | Nylon Flat Washer, 5/8 | 6 |
| 23 | 01004127 | HHCS, 3/8-16, 3.00 | 1 |
| 24 | 01005569 | Front Frame Strut Assembly | 2 |
| 25 | 01006408 | Flat Washer, 1.25 ID | 4 |
| 26 | 01006823 | Hose, 5/8 ID 13/16 OD, 8" LG | 2 |
| 27 | 01007487 | Rod End, Male | 2 |
| 28 | 01007526 | Jam Nut, 5/8-18 | 2 |
| 29 | 01007527 | Spacer, .630 ID x 1.06 OD x .440 | 3 |
| 30 | 01008206 | Bellecrank Weldment Assembly | 3 |
| 31 | 01007681 | Deck Lift Shaft | 2 |
| 32 | 01007962 | Socket Head CapScrew, 5/16-18 x 2 | 8 |
| 33 | 01008453 | Lift Link Rod | 1 |
| 34 | 01008801 | Rivet, 1/4 x 5/8 | 6 |
| 35 | 01010119 | Nut, 1/2-13, FlangeLock | 1 |
| 36 | 02003566 | Deck Link | 2 |
| 37 | 02002708 | Bearing Lift Brace Assembly, Left Hand includes: | 1 |
| | 00060078 | Grease Fitting | 1 |
| | 02002384 | Bearing | 2 |
| 38 | 02002709 | Bearing Lift Brace Assembly, Right Hand includes: | 1 |
| | 00060078 | Grease Fitting | 1 |
| | 02002384 | Bearing | 2 |
| 39 | 02002596 | Deck Lift Foot Pedal | 1 |
| 40 | 02002595 | Deck Lift Foot Pedal Weldment | 1 |
| 41 | 02002959 | Lift Compression Spring | 2 |
| 42 | 02003050 | Lift Tube, 3.0 x 1.5 | 1 |
| 43 | 02003042 | Lift Link Bracket | 1 |
| 44 | 02003043 | Spacer, .375 ID x .625 OD x 1.53 | 1 |
| 45 | 02003511 | Yoke Plate | 1 |
| 46 | 02003749 | Lift Wear Plate | 1 |
| 47 | 02003505 | Flat Head Cap Screw, 1/4-20 x .75 | 2 |
| 48 | 02003585 | HHCS, 1/2-13 x 2.50 | 1 |
| 49 | 02003586 | Spacer, .76 ID x 1.0 OD x .75 | 1 |
| 50 | 02003587 | Spacer, .50 ID x .75 OD x 1.313 | 1 |
| 51 | 02003588 | Torsion Spring, .120 Wire x 1.32 OD | 1 |
| 52 | 736-0188 | Washer, .76 x 1.49 x .06 | 3 |

23HP Electrical Assembly Kawasaki - Figure 14 and Parts List

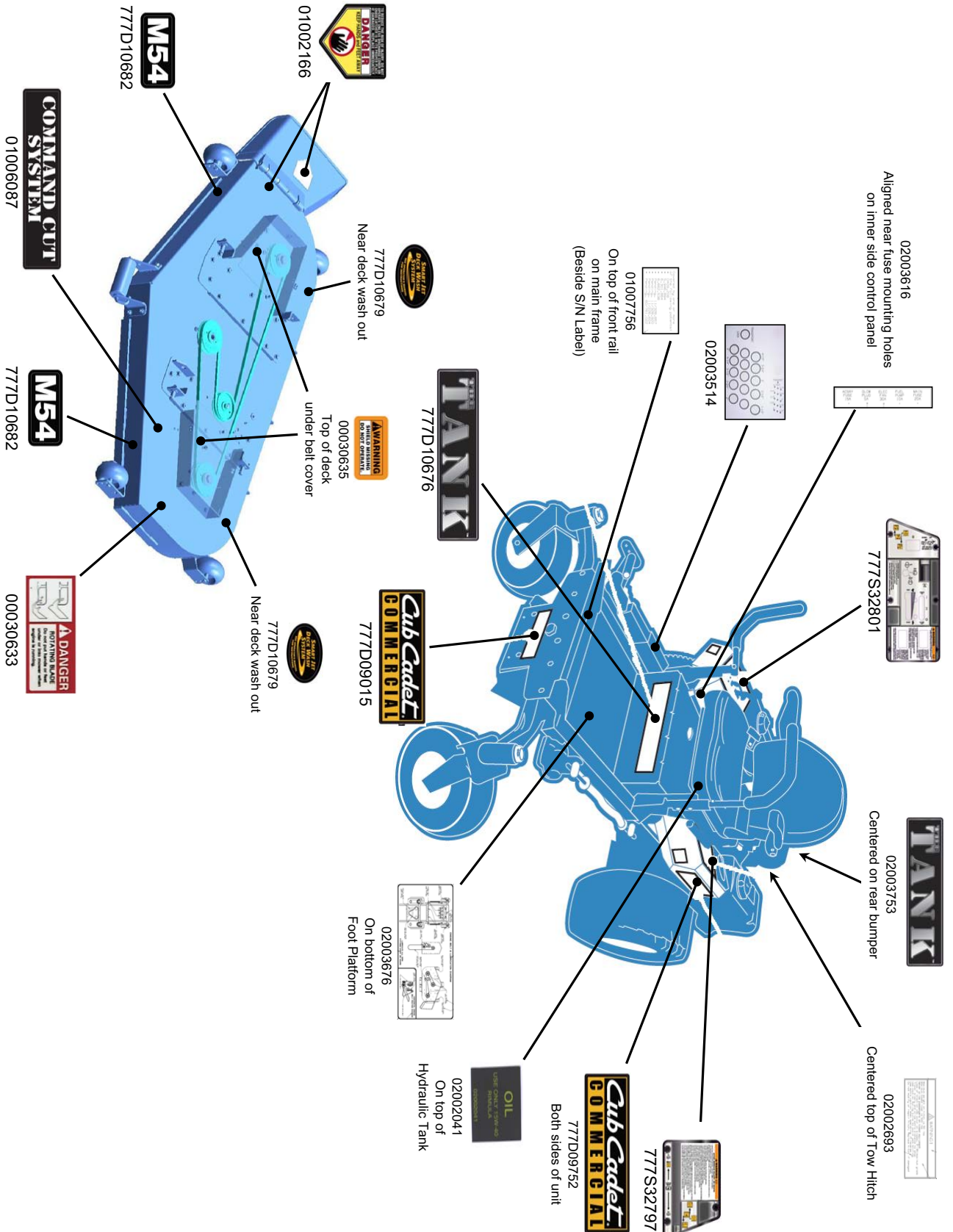


Fasten relay (01002251) with self-tapping screw (01000628) on LH control panel shown in Fig. 9.

GD: 02002560-12/15/06

| Ref. No. | Part No. | Description | Qty. | Ref. No. | Part No. | Description | Qty. |
|----------|----------|--------------------------------------|------|----------|----------|------------------------------|------|
| 1 | 00012032 | Battery, 12V 225CCA 30 Min | 1 | 18 | 01002766 | Hex Flange Lock Nut, 1/4-20 | 2 |
| 2 | 00012152 | Lock Nut w/Nylon Insert | 2 | 19 | 01003581 | Switch, Ignition, 6 Pin | 1 |
| 3 | 00012165 | Nylock Nut, 5/16-18 | 2 | 20 | 01004040 | Grommet, .75 ID | 1 |
| 4 | 00012470 | Tie, Cable, 3/16 x .05 x 7.4" | 5 | 21 | 01004078 | Cable, Battery Black, 28" | 1 |
| 5 | 00013131 | Screw, Hex, Cap, 1/4-20 x .75 | 2 | 22 | 01005389 | Meter, Hour | 1 |
| 6 | 00013258 | Boot, 1" OD Rubber Battery-PST, Red | 2 | 23 | 01009905 | Bracket, PTO Switch Retainer | 1 |
| 7 | 00014602 | Round Hd. Machine Screw, 10-32 x 3/4 | 2 | 24 | 02000024 | Switch, Safety N.O./N.C. | 1 |
| 8 | 00014608 | Nut, Lock, Nylon Insert, #10-32 | 3 | 25 | 02002059 | Cable, Battery Red, 42" | 1 |
| 9 | 00017584 | Carriage Bolt, 1/4-20 x .750 | 2 | 26 | 02002552 | Battery Bracket | 1 |
| 10 | 00022560 | Hex Nut, Flange Lock, 3/8-16 | 4 | 27 | 02002592 | Control/Brake Panel Switch | 1 |
| 11 | 00032097 | Nut, W/Cap, 5/8-32 Ignition | 1 | 28 | 02002822 | Wire Harness Adaptor | 1 |
| 12 | 01000372 | Carriage Bolt, 3/8-16 x .75 Long | 4 | 29 | 02002824 | Harness Assembly (not shown) | 1 |
| 13 | 01001811 | Hourmeter, Harness (not shown) | 1 | 30 | 02003775 | Electrical Conduit Clip, 5/8 | 2 |
| 14 | 01002111 | Switch, Electric, PTO | 1 | 31 | 02003038 | Electrical Conduit Clip, 3/8 | 1 |
| 15 | 01002228 | Solenoid Magnetic Switch | 1 | 32 | 02003533 | Terminal Tab, 1/4" Blade | 1 |
| 16 | 01002251 | Relay, 12V 40A | 1 | 33 | 723-3064 | Strap, Battery | 1 |
| 17 | 01002253 | Cable, Battery Red, 5" | 1 | | | | |

Decal Map





Cub Cadet Commercial
P.O. Box 368023
Cleveland, OH 44136