



imageRUNNER™  
8500



## THE ULTIMATE NETWORKED PRINTING SOLUTION

### The Digital Production System Offering Unmatched Speed, Performance, Reliability, and Document-finishing Capabilities

In order to be successful in the high-volume, Print-on-Demand environment, a device must consistently deliver high levels of output while maintaining excellent image quality and machine reliability—day in and day out. Introducing the imageRUNNER™ 8500 Networked Production System...a high-volume, high-performance networked printing solution engineered to deliver the utmost in productivity.

Operating at a fast 85 pages per minute, delivering the highest output quality in its class, and offering one of the most robust digital engines in Canon's current product line, the imageRUNNER 8500 can meet the demands of high-volume copying and distributed printing with ease. Add to that its extensive finishing capabilities, and you have the ideal solution for today's production environments.

#### So Advanced, It's Simple

The imageRUNNER 8500 builds upon the award-winning design of Canon's current digital product line, offering a consistent user-interface while also introducing several new capabilities to enhance document workflow. With the ability to support network printing, copying, and both local and network scanning,\* the imageRUNNER 8500 can help you to manage all your information capture, storage, and distribution needs.

#### Fast to the Finish

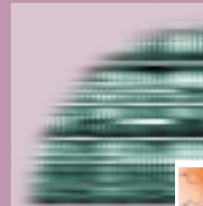
In today's fast-paced business environment, there is no such thing as too fast. The imageRUNNER 8500 pushes the envelope when it comes to speed, delivering both copies and prints at a quick 85 pages per minute. Finished documents are continuously output at the machine-rated speed, even when performing advanced functions such as stapling and hole-punching. Scanning, which decreases speed in most competitive units, is achieved at a remarkable 80 pages per minute on the imageRUNNER 8500—the fastest scanning speed of any multifunction device in the world.

#### Outstanding Image Quality

The imageRUNNER 8500 delivers the exceptional image quality Canon customers have come to expect. With 600 x 600 dpi resolution that is interpolated to 1200 x 600 dpi resolution for copying, and 2400 x 600 for scanning, you can always count on getting the sharpest image possible.

#### Impressive Input

The imageRUNNER 8500 ships standard with a 100-sheet Automatic Document Feeder designed to deliver high levels of productivity. Accepting both simplex and duplex originals in sizes up to 11" x 17" and in weights up to 110 lb. Index stock, there is little this document feeder can't handle.



\*Check with your local Canon-authorized Dealer for availability.

## Versatile Paper Supply

The imageRUNNER 8500 has a standard paper supply of 4,150 sheets, enabling it to handle most long-run continuous jobs. The optional 3,500-sheet Side Paper Deck-M1 can be added, increasing overall paper capacity to an unbelievable 7,650 sheets. With its generous paper supply, large number of paper sources, and wide range of acceptable paper weights, sizes, and stocks, the imageRUNNER 8500 is capable of performing just about any job you can dream up.

## Innovative Capabilities to Help You Work Smarter

The imageRUNNER 8500's standard 10GB Internal Image Server hosts many unique applications that set new standards for production-level output. These innovative capabilities include Confidential Mail Boxes, Scan-Once-Print-Many, Automatic Page Imposition, Copy Reservation, Job Build, SmartScan Page Recognition, Chapterization, and Tab Copying and Insertion.

## Finishing Capabilities that Make You Shine

Your finished documents are representative of your business, and as such, should be as professional-looking as possible. The imageRUNNER 8500's extensive finishing capabilities are designed to make your documents stand out from the crowd. From basic collated and stapled output to multipage, saddle-stitched booklets, the imageRUNNER 8500 delivers with a minimum of operator involvement. There is even optional support for Z-folding and post-process document insertion.

## The Ideal Solution for Production-level Environments

With a print controller capable of handling 10/100 Ethernet or Token Ring\* connections and PostScript® 3 Emulation and PCL® 6 print languages, the imageRUNNER 8500 can meet the needs of the most demanding production environments.

Canon's latest print controller design leverages the unit's Internal Image Server and memory structure, ensuring rapid first-page-out times, and quick and efficient printing of common office documents. Additionally, the imageRUNNER 8500's network printing function offers a number of advanced features such as Confidential Printing, Mail Box Printing, In-line Finishing, and more.

## Manage Information Regardless of Form

As the widespread use of electronic-based information continues to grow, office devices need to be able to easily integrate both hard-copy and electronic documents. Through its scanning capabilities, the imageRUNNER 8500 is up to the task. Users can scan documents locally to the imageRUNNER 8500 internal User Mail Boxes, or over the network (network print option required) using Canon's virtual TWAIN driver. In addition, the imageRUNNER 8500 can be upgraded to add Canon's new Universal Send™ capability, allowing users to scan and "push" documents via communicating machines, including E-mail, I-Fax, FTP, and local areas networks.

## Connectivity Software Simplified

Like all Canon networked systems, the imageRUNNER 8500 comes equipped with a comprehensive set of system utilities designed to simplify operation and management for both end-users and network administrators. Through these tools, Canon eases device installation and network management while supplying a level of device status and job-management capabilities unmatched in the industry.

Additionally, all imageRUNNER 8500 devices ship standard with a Remote UI feature, allowing users to access device status and configuration, job status, address books, and more using a standard web browser from a desktop PC, with no additional software requirements.

## An Impressive Line-up

The imageRUNNER 8500 joins an already impressive line-up of Canon digital multifunction products ranging in speed from 16 to 110 pages per minute.

When considering the imageRUNNER 8500, we think you will agree that it is a solution that truly stands apart from other competitive offerings in this segment, and one that will clearly enable you to achieve greater levels of productivity, efficiency, and competitive advantage.

As an ENERGY STAR® Partner, Canon U.S.A., Inc. has determined that this product meets the ENERGY STAR® guidelines for energy efficiency. The ENERGY STAR name is a registered trademark of the U.S. Environmental Protection Agency. PCL is a registered trademark of Hewlett-Packard Company. Adobe and PostScript are trademarks of Adobe Systems Incorporated. Windows is a registered trademark of Microsoft Corporation. AppleTalk and TrueType are registered trademarks of Apple Computer, Inc. Novell and NetWare are registered trademarks, and IPX/SPX is a trademark of Novell, Inc. in the United States and other countries. Solaris is a trademark of Sun Microsystems, Inc. Canon is a registered trademark, and IMAGERUNNER, Canon Know How, and the GENUINE logo are trademarks of Canon Inc. IMAGEANYWARE is a service mark of Canon U.S.A., Inc. All other terms and product names may be trademarks or registered trademarks of their respective owners, and are hereby acknowledged.

Specifications subject to change without notice.

0022W598

0501-8500SS-75M

PRINTED ON RECYCLED  
PAPER IN THE U.S.A.

## imageRUNNER 8500 Specifications

Type:	Digital, Multifunction Imaging System
Imaging System:	Laser Dry Electrostatic Transfer
Developing System:	Dry Monocomponent Toner Projection
Image Server Memory:	Standard 196MB RAM + 10GB HDD
First-copy Time:	2.9 Seconds from Platen Glass 4.3 Seconds from ADF
Warm-up Time:	6 Minutes or Less
Acceptable Originals:	Sheets, Books, 3-Dimensional Items (Up to 4.4 lb.)
Max. Original Size:	11" x 17" (Ledger)
Max. Copy Size:	11" x 17" (Ledger)
Min. Copy Size:	4-1/8" x 5-7/8"
Max. Mail Boxes Supported:	100
Max. Copy Reservation:	5 Jobs
Copy/Scanning Resolution:	600 dpi x 600 dpi
Printing Resolution:	1200 dpi x 600 dpi Interpolated 600 dpi x 600 dpi
Half-tone:	2400 dpi x 600 dpi Interpolated
Copy Speed:	25.6 Gradations of Gray 85 cpm (Letter) 42 cpm (Ledger)
Duplexing:	Standard Automatic Trayless Duplexing
Magnification Reduction/ Enlargement:	25% to 400% in 1% Increments
Paper Supply Standard:	Dual Front-loading Trays (1,500 Sheets Each) Dual Front-loading Cassettes (550 Sheets Each)
Optional:	50-sheet Stack Bypass 3,500-sheet Paper Deck (Total: 7,650 Sheets)
Multiple Copies:	1 to 999
Paper Weights:	17 lb. Bond to 110 lb. Index (All Trays, Cassettes, and Bypass)
<b>Supplies</b>	
Drum:	Amorphous Silicon—Estimated Yield: 5,000,000 Impressions
Maximum Duty Cycle:	400,000 Impressions per Month
Toner:	Magnetic Negative Toner—Estimated Yield: 36,600 Images (at 6% Coverage)

### ACCESSORIES

#### Automatic Document Feeder

Acceptable Originals:	Statement to Ledger
Scanning Speed:	80 ppm (Letter)
Capacity:	100 Sheets (All Sizes/20 lb.)
Paper Weights:	13 lb. Bond to 110 lb. Index

#### Side Paper Deck-M1 (Optional)

Paper Capacity:	3,500 Sheets
Paper Size:	Letter
Paper Weights:	17 lb. Bond to 110 lb. Index

#### Finisher-K1 (Optional)

Number of Trays:	2 Trays
Tray Capacity	
Top Tray:	1,000 Sheets (All Sizes) Offset Stacking
Lower Tray:	2,000 Sheets (Letter) 1,000 Sheets (11" x 17", Legal) Offset Stacking
Staple Position:	1 - Any Corner 2 - Side Margin
Max. Stapling Capacity:	100 Sheets (Letter/Statement) 50 Sheets (Letter-R/Legal/11" x 17")

#### Punch Finisher-K2 (Optional)

Number of Trays:	2 Trays
Tray Capacity	
Top Tray:	1,000 Sheets (All Sizes) Offset Stacking
Lower Tray:	2,000 Sheets (Letter) 1,000 Sheets (11" x 17", Legal) Offset Stacking
Staple Position:	1 - Any Corner 2 - Side Margin
Max. Stapling Capacity:	100 Sheets (Letter/Statement) 50 Sheets (Letter-R/Legal/11" x 17") 3 Holes (11" x 17", Letter) 2 Holes (Legal, Letter-R)

#### Saddle Finisher-K3 (Optional)

Number of Trays:	3 Trays
Tray Capacity	
Top Tray:	1,000 Sheets (All Sizes) Offset Stacking
Lower Tray:	2,000 Sheets (Letter) 1,000 Sheets (11" x 17", Legal) Offset Stacking
Saddle-stitch Tray:	30 Sets 10 Sets
Hole-punch:	3 Holes (11" x 17", Letter) 2 Holes (Legal, Letter-R)
Staple Position:	1 - Any Corner 2 - Side Margin
Max. Stapling Capacity:	100 Sheets (Letter/Statement) 50 Sheets (Letter-R/Legal/11" x 17")
Saddle-stitch Capabilities	
Saddle-stitch Paper Sizes:	11" x 17", Letter
Stapling Capacity:	15 Sheets (60 Pages)
Folding:	V-folding Standard

#### Document Inserter-B1\*\* (Optional)

Paper Sizes:	Letter-R to 11" x 17"
Paper Weights:	17 lb. Bond to 110 lb. Index
Feeder Capacity:	Letter, Letter-R: 100 Sheets Legal, 11" x 17": 50 Sheets

#### Paper Folding Unit-C1\*\* (Optional)

Paper Sizes:	11" x 17" Only
Paper Weights:	17 lb. Bond to 22 lb. Bond
Fold Type:	Z-fold

#### Network Multi PDL Printer Kit-B1 (Optional)

PDL Support:	PCL® 5e, PCL® 6 PostScript® 3 Emulation 136 PostScript Fonts 117 Adobe® Type Fonts 19 TrueType® Fonts 80 PCL Roman Fonts 32 PCL Bar-code Fonts
Internal Fonts:	RJ-45 (10/100 Base-T) IEEE 1284 Token Ring* (Optional Card) IPX/SPX™: 802.2, 802.3, Ethernet II, 802.2 SNAP TCP/IP SMB AppleTalk®: 802.2 SNAP and AppleTalk Phase II Only Novell® NetWare® v.3.2, 4.1, 4.11, 4.2, 5 (IPX/SPX) Windows® 95, 98 (TCP/IP) Windows NT™ 4.0 (TCP/IP) Windows® 2000 (TCP/IP) Solaris™ 1.x, 2.5 or Later (TCP/IP) Apple System 7.5 or Higher (DDP)
Interface Connections:	
Protocol Stacks:	
Network OS:	

\*Check with your local Canon-authorized Dealer for availability.  
\*\*The Document Inserter-B1 and the Paper Folding Unit-C1 can only be used with the Saddle Finisher-K3.

**Canon** KNOW HOW™

1-800-OK-CANON  
www.usa.canon.com

Canon U.S.A., Inc.  
One Canon Plaza  
Lake Success, NY 11042

