

*Parts Manual for*

# **SNAPPER®**

## **22" STEEL DECK WALK BEHIND COMMERCIAL MOWER SERIES 20**

<i>Model No.</i>	<i>Description</i>
7800849	CP215520HV



**Briggs & Stratton Yard Power Products Group**

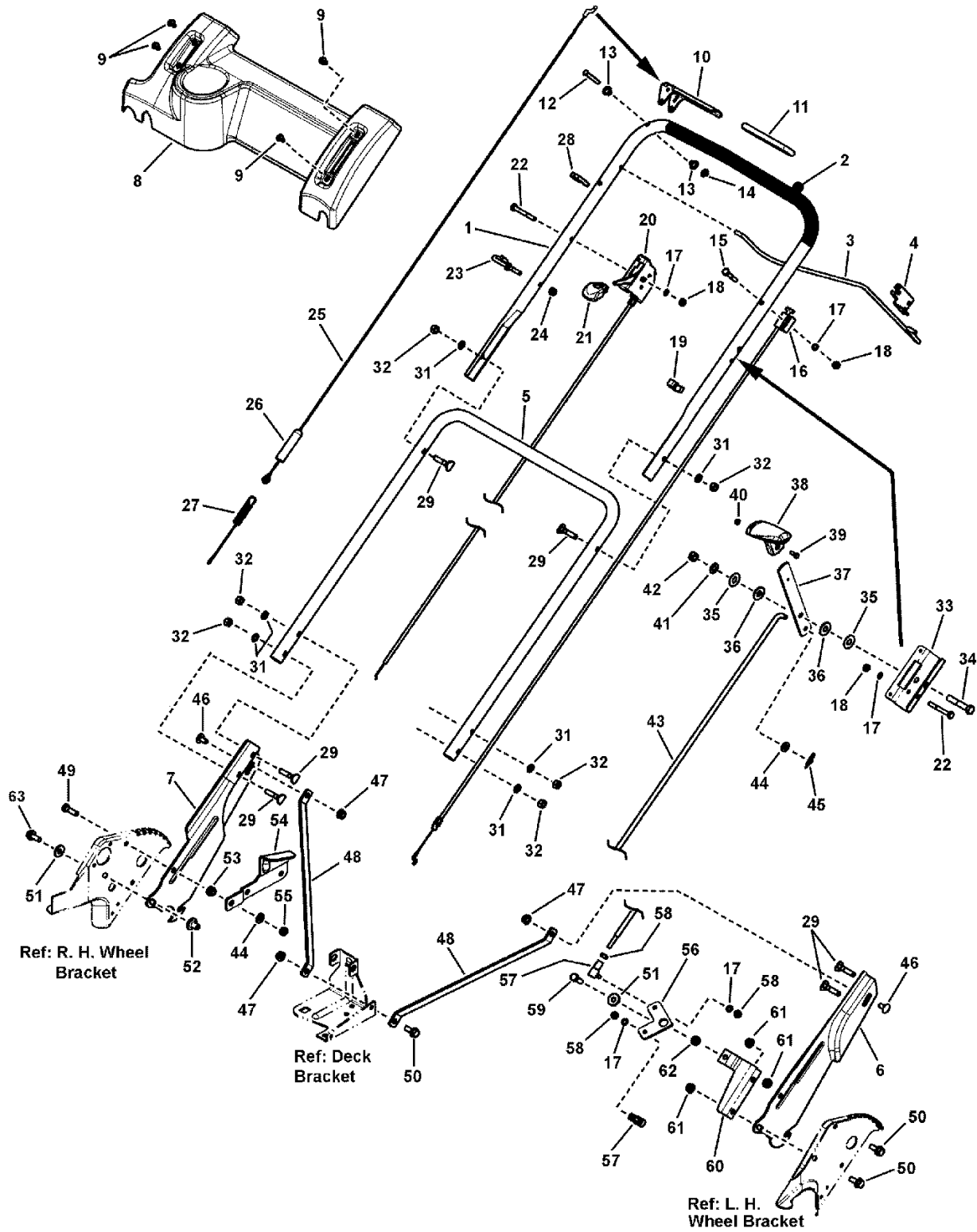
535 Macon Road  
McDonough, GA, 30253 U.S.A.  
800-935-2967

<b>Manual No.</b>	<b>7106167</b>
<b>Revision: -</b>	<b>9/30/2013</b>

Not for  
Reproduction

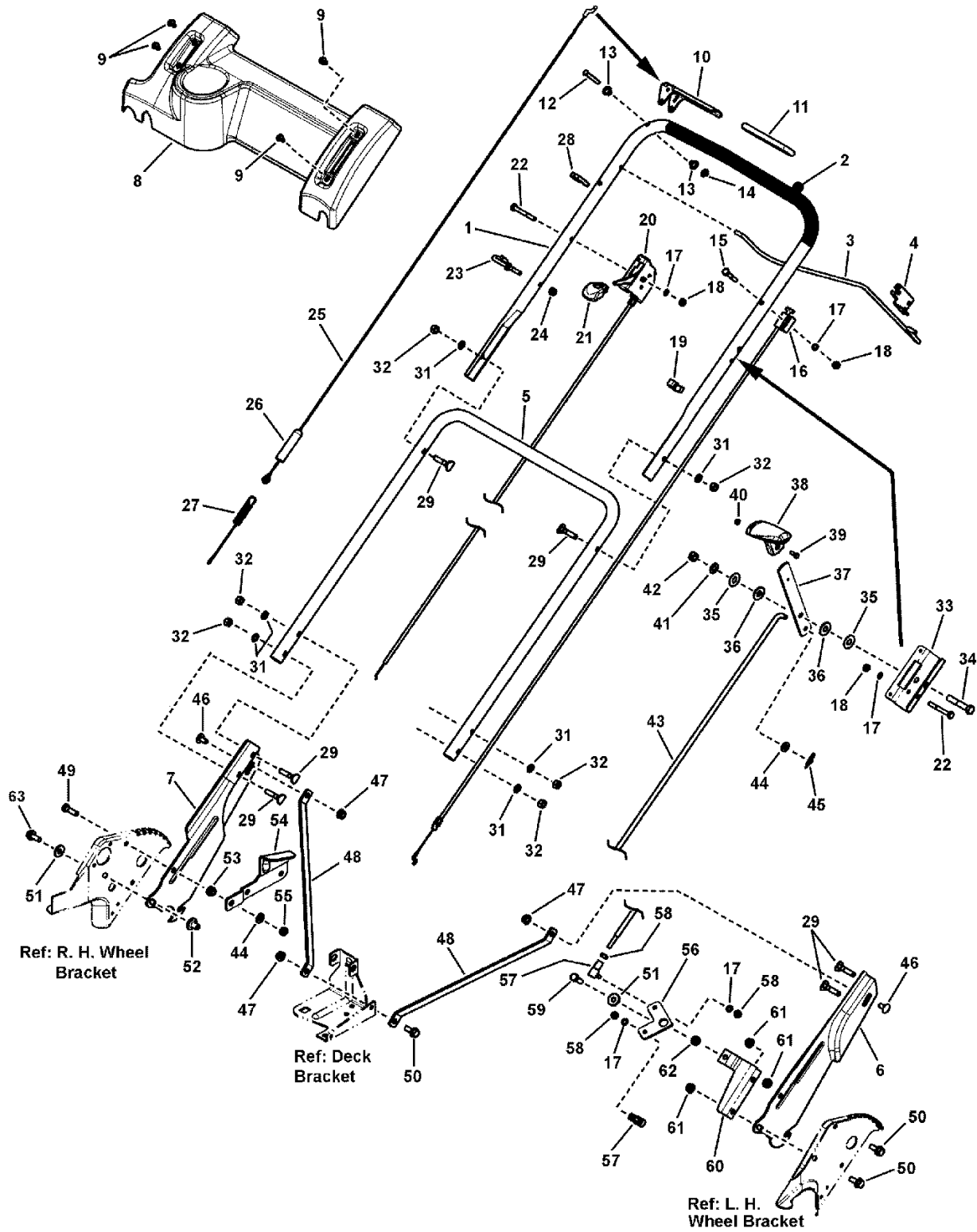
<b>PAGE</b>	<b>GROUP</b>
4	Handle Group
8	Wheels, Brackets & Latches
10	Deck, Engine & Blade Group
12	Drive System, Self Propelled
16	Transmission - Differential Group
18	Grass Bag & Adapter Group
20	Decal Group

Not for  
Reproduction



<b>Item</b>	<b>Part No</b>	<b>Qty</b>	<b>Description</b>
1	7074411AYP	1	HANDLE, Upper
2	7023810YP	1	FOAM GRIP, 18.75
3	7074418AYP	1	BAIL, OPC Control (16.6" Wide)
4	7034872YP	1	CLIP, Zone Control
5	7074156AYP	1	HANDLE, Middle
6	7033985AYP	1	HANDLE, Lower, ADJ, LH
7	7033986AYP	1	HANDLE, Lower, ADJ, RH
8	7074140YP	1	PANEL, Control, No Electric Switch
9	703961	4	SCREW, 1/4-20 X .550, Self-Tapping, Zinc/Clear (Was 7900067 or 80005286)
10	7074473AYP	1	HANDLE, Clutch
11	7028407YP	1	GRIP, International Symbol, 4.6" Black
12	704031	1	PIN, 1/4 X 1.5", Clevis, ZC/CL (Was 7011886, 7023792 or 80005708)
13	7014343YP	2	BUSHING, Flanged, .27 ID, Nylon, Black
14	704005	1	NUT, 1/4", Push, Zinc/Clear (Was 7091020 or 80005599)
15	703234	1	SCREW, 1/4-20 X 1.5, Hex Head Cap, GR5, ZC/CL (Was 7090909, 7079577 or 80002713)
16	7102235YP	1	CABLE, Zone Control (60.3 Long)
17	703462	3	WASHER, 1/4 Internal Tooth Lock, YZ (Was 7090053 or 80004414)
18	703127	3	NUT, 1/4-20, G5 Zinc/Clear (Was 7090063, 7091576 or 80003586)
19	7023813SM	3	CLIP, Wiring Harness
20	7078026YP	1	CONTROL, Throttle, Honda, 50.81" L
21	7075308YP	1	KNOB, Throttle, Red
22	703163	2	SCREW, 1/4-20 X 2.0, Hex Head Cap, GR5, Zinc/Clear (Was 1921963, 90505 or 80003674)
23	7028488MA	1	GUIDE, 1/4-20, Rope, CL/ZC
24	15X145MA	1	NUT, 1/4-20, Nylock, GR A, Zinc/Clear (Was 703232, 7076978 or 80002730)
25	7034604YP	1	CABLE, Clutch Control, 41.25" L
26	7012121YP	1	COVER, Vinyl
27	7012122YP	1	SPRING, Clutch
28	7026219YP	1	CLAMP, 7/8" Double Cable
29	704063	6	BOLT, 5/16-18 X 1.50, Carriage Head, Short Neck, ZC/CL (Was 7091190 or 80005975)
31	7090391SM	6	WASHER, 5/16, Internal Lock, Zinc/Clear (Was 703587 or 80003683)
32	703465	6	NUT, 5/16-18, Hex, GR5, Zinc/Clear (Was 7091069, 7091511 or 80002725)
33	7074003YP	1	BRACKET, Shift
34	703589	1	SCREW, 3/8-16 x 2, Hex Head Cap, GR5, Zinc/Clear (Was 1923701, 7091305 or 80003522)
35	703964	2	WASHER, 7/16" ID, 1" OD, .060 Thk, Flat, ZC/CL (Was 7031961 or 80005597)
36	704004	2	WASHER, .406 ID X 1.0 OD X .063 Thk, Flat Nylon (Was 7028465 or 80005596)
37	7074113BMYP	1	LEVER, Shift
38	7075182YP	1	KNOB, Shift, Red
39	703351	1	SCREW, #8-32 X 0.50, Machine Fillister Head, Zinc/Clear (Was 7091167 or 80004404)
40	703460	1	NUT, #8-32, Hex, Zinc/Clear (Was 7091018 or 80004411)
41	704006	1	WASHER, 3/8" ID x 3/4" OD, Belleville, Zinc/Clear (Was 7028568 or 80005600)
42	703347	1	NUT, 3/8-16, Hex Center-Lock, GR B, Zinc/Clear (Was 7091585 or 80004408)
43	7074133YP	1	ROD, Speed Control (1/4-28 thread)
44	703350	1	WASHER, 5/16, Flat SAE, Zinc/Clear (Was 80004405)
45	704030	1	PIN, 5/16 X 1.044, Self-Locking Cotter, Zinc/Clear (Was 7034162 or 80005707)

**Footnotes:**

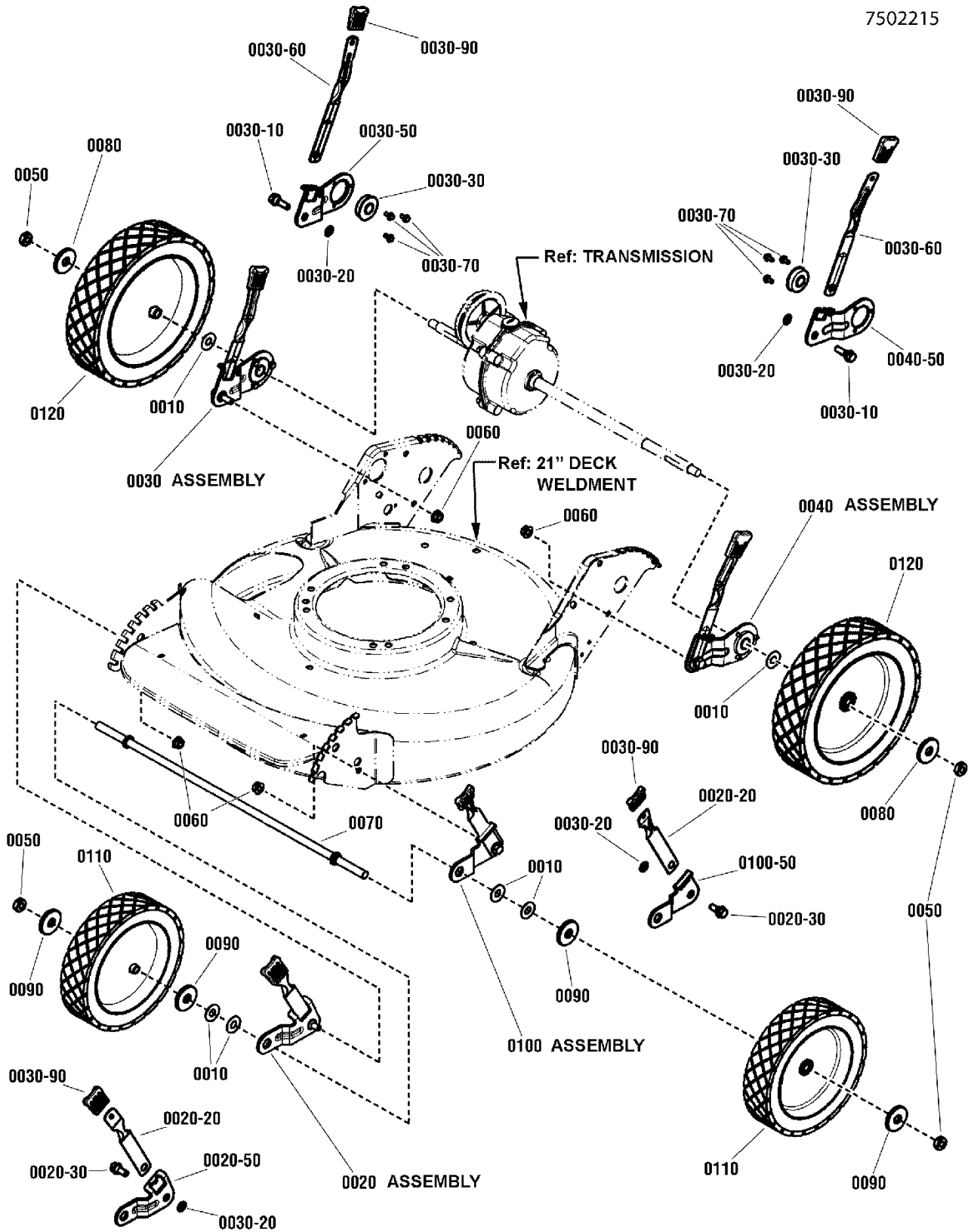


<b>Item</b>	<b>Part No</b>	<b>Qty</b>	<b>Description</b>
46	703798	2	BOLT, 5/16-18 X .50, Carriage, Zinc/Clear (Was 7090731, 725993, 908156MA or 80004563)
47	690272MA	3	NUT, 5/16-18, Serated Lock Flange, GR5, Zinc/Clear (Was 7091601 or 80002728)
48	7046707BMYP	2	BRACE, Handle
49	703301	1	SCREW, 5/16-24 x 1 Hex Head Cap, GR 5, BZ (Was MT910828MA or 80003532)
50	9357MA	3	SCREW, 5/16-18 X .750, Flanged Whiz-Lock, GR5 (Was 1930591, 1960738, 7090595 or 80003531)
51	703118	2	WASHER, 7/8, Flat, GR5, Zinc/Clear (Was 7091130, 7900022 or 80003517)
52	703947	1	NUT, 5/16-18 X .625, Weld, ZC/CL (Was 7090733, 7090895 or 80005534)
53	7012114SM	1	BUSHING, Differential
54	7034179BMYP	1	LINK, Differential, Commercial
55	703896	1	NUT, 5/16-24, Hex Center Lock, GR B, Zinc/Clear (Was 7091606, 7090174, 7090222 or 80004848)
56	7073913YP	1	BELL CRANK, Black Zinc
57	7015753YP	2	BALL JOINT, 1/4-28
58	703461	3	NUT, 1/4-28 Hex, GR5, Zinc/Clear (Was 7090095 or 80004412)
59	703408	1	SCREW, 5/16-18 x 7/8 Hex Head Cap, GR 5, Zinc/Clear (Was 80004421)
60	7073822BMYP	1	BRACKET, Bell Crank
61	690272MA	5	NUT, 5/16-18, Serated Lock Flange, GR5, Zinc/Clear (Was 7091601 or 80002728)
62	703970	1	SPACER, .623 OD x .328 ID x .151 L (Was 7013849 or 80005375)
63	703167	1	SCREW, 5/16-18 x 1-1/4 Hex Washer Head Self-Tap (Was 1931202, 7091151, 7091524 or 80003681)

Not for  
Reproduction

**Footnotes:**

7502215

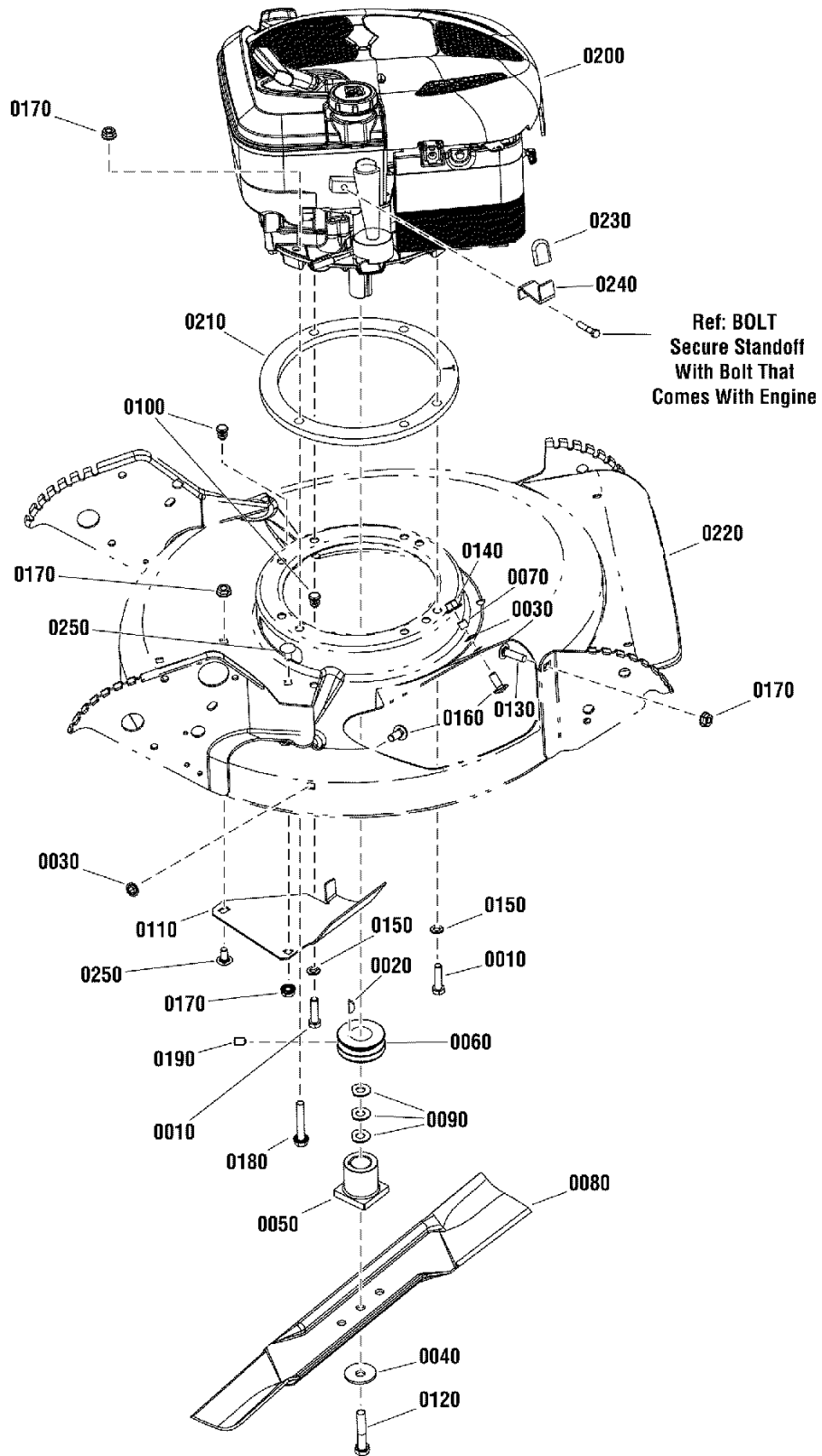




<b>Item</b>	<b>Part No</b>	<b>Qty</b>	<b>Description</b>
0010	703964	6	WASHER, 7/16" ID, 1" OD, .060 Thk, Flat, ZC/CL (Was 7031961 or 80005597)
0020	7600180YP	1	KIT, Front Wheel Arm Assembly, RH (Was 7051886)
0020-20	7012325YP	2	LATCH, Height
0020-30	703839	2	BOLT, 5/16-18 X .750, Hex Washer Head Shoulder, Zinc/Clear (Was 7015761 or 80004422)
0020-50	7031017YP	1	WHEEL ARM, Front, Round Hole, RH, Clear
0030	7054246YP	1	ASSEMBLY, Wheel Arm, Long, RR (Was 7054230YP)
0030-10	703840	2	BOLT, 5/16-18 X 1.0, Hex Washer Head .435 Dia. Shoulder, ZC/CL (Was 7011078 or 80004423)
0030-20	703297	4	RETAINER, 5/16 X .625, Push Nut, GR 5, Zinc/Clear (Was 1921982, 3031796 or 80003523)
0030-30	7012312YP	2	BEARING, 9/16" ID
0030-50	7032722YP	1	ARM, Wheel, Right Rear, Zinc/Clear
0030-60	7035717YP	2	LATCH, Height Adjusting, (long)
0030-70	703967	6	SCREW, #10-32 x 3/8, Torx Hex Washer Head Self-Tap, ZC/CL (Was 7091012 or 80005604)
0030-90	7103793YP	4	GRIP, Height Latch, Black (Was 7100633)
0040	7054247YP	1	ASSEMBLY, Wheel Arm, Left Rear, Long (Was 7054231YP)
0040-50	7032723YP	1	ARM, Wheel, Left Rear, Zinc/Clear
0050	703348	4	NUT, 7/16-20, Hex Jam Center Lock, GR B, Zinc/Clear (Was 7090377 or 80004407)
0060	690272MA	4	NUT, 5/16-18, Serated Lock Flange, GR5, Zinc/Clear (Was 7091601 or 80002728)
0070	7021119YP	1	AXLE, V21
0080	7031960YP	2	HUBCAP, Rear
0090	7031121YP	4	HUBCAP, Front
0100	7600179YP	1	ASSEMBLY, Front Wheel Arm, LH (Was 7051885)
0100-50	7031016YP	1	WHEEL ARM, L.H. Front (Square Hole)
0110	7035727YP	2	WHEEL, 8 x 1.75 - Steel - D - Gray
----	7011125YP	4	BEARING, 7/16" ID, Ball, Front Wheel (Not Shown)
0120	7035726YP	2	WHEEL, 10 x 1.75, Steel-D, (Self Propelled) - Gray

Not for  
Reproduction

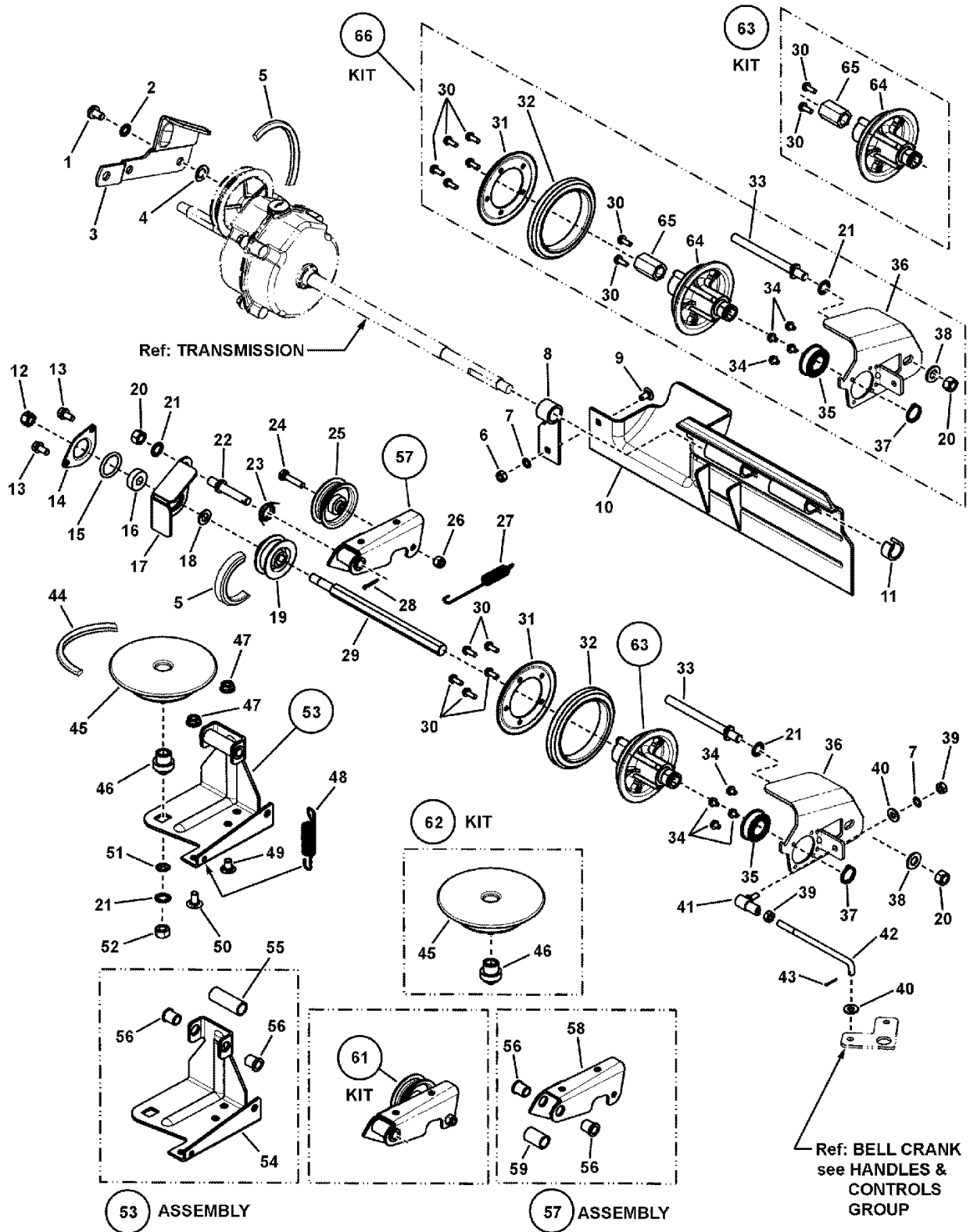
**Footnotes:**



<b>Item</b>	<b>Part No</b>	<b>Qty</b>	<b>Description</b>
0010	703299	2	SCREW, 5/16-24 X 1.25, Hex Head Cap, GR5, Zinc/Clear (Was 1921982, 3031796 or 80003523)
0020	7010783YP	1	KEY, HI-PRO, #505
0030	703297	2	RETAINER, 5/16 X .625, Push Nut, GR 5, Zinc/Clear (Was 028X64MA, 5025498, 7011791, 720372 or 80002734)
0040	703963	1	WASHER, 13/32x1-13/32" Dia. Cone (Was 7012063 & 80005590)
0050	7012927YP	1	HUB, Blade, 7/8" ID
0060	7021822YP	1	PULLEY, Engine, 1" ID X 2-1/8" OD, Yellow
0070	7024340SM	1	SPACER, .375 OD X .316 ID X .305 L
0080	7026691YP	1	BLADE, 21" L, .97" Standard Lift
0090	7044770YP	3	SPACER, .874 OD X .385 ID X .060 L, YZ
0100	7046780SM	2	PLUG, Hole, .44" OD, Polyethylene
0110	7074568YP	1	COVER, Belt, Zinc/Clear
0120	703999	1	SCREW, 3/8-24 X 2, Hex Head Cap, GR5 (Was 7090167 or 80005591)
0130	704002	1	BOLT, 5/16-18 X 1.125, Carriage, ZC/CL (Was 7091169 or 80005594)
0140	704001	1	NUT, 5/16-18 Large Flange Center Lock, ZC/CL (Was 7090951 or 80005593)
0150	703116	2	WASHER, .32 X .58 X .08, Split Lock, Zinc/Clear (Was 7091315 or 80002745)
0160	703185	2	BOLT, 5/16-18 x 3/4, Carriage, Short Neck, G5, Zinc/Clear (Was 7091508 or 80004072)
0170	690272MA	4	NUT, 5/16-18, Serated Lock Flange, GR5, Zinc/Clear (Was 7091601 or 80002728)
0180	704062	1	BOLT, 5/16-18 X 2.0, Serrated Flanged Head, ZC/CL (Was 7091592 or 80005974)
0190	704003	1	SCREW, 5/16-18 X .50, Hex Socket Head, Phosp/Oil (Was 7092086 or 80005595)
0200	7102407YP	1	* ENGINE, 5.5 GTP Honda Comm Tier III, Model GXV160UH2A1AS Code 649061
0210	7300969BMYP	1	RING, Engine Spacer
0220	7500549DYP	1	WELDMENT, Deck, 21", Self-Propell, HV (Was 7400027DYP)
0230	7075305YP	1	GRIP, Standoff
0240	7075306YP	1	STANDOFF
0250	703447	2	BOLT, 5/16-18 X .625, Carriage, GR5, Zinc/Clear (Was 1931332, 703125, 7090799, 7091026 or 80003584)

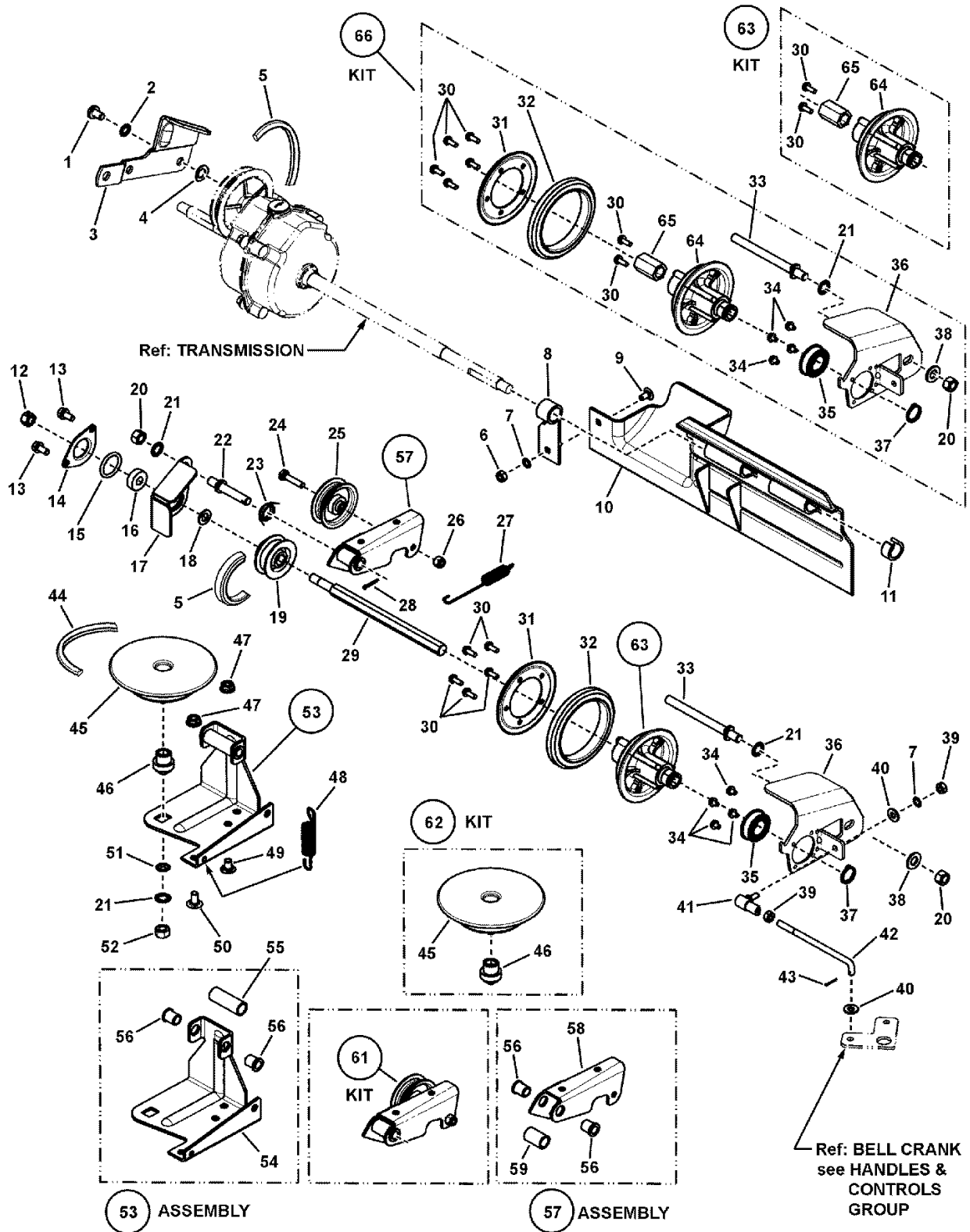
**Footnotes:**

NOTE: \* Purchase engine parts from engine manufacturer dealer.



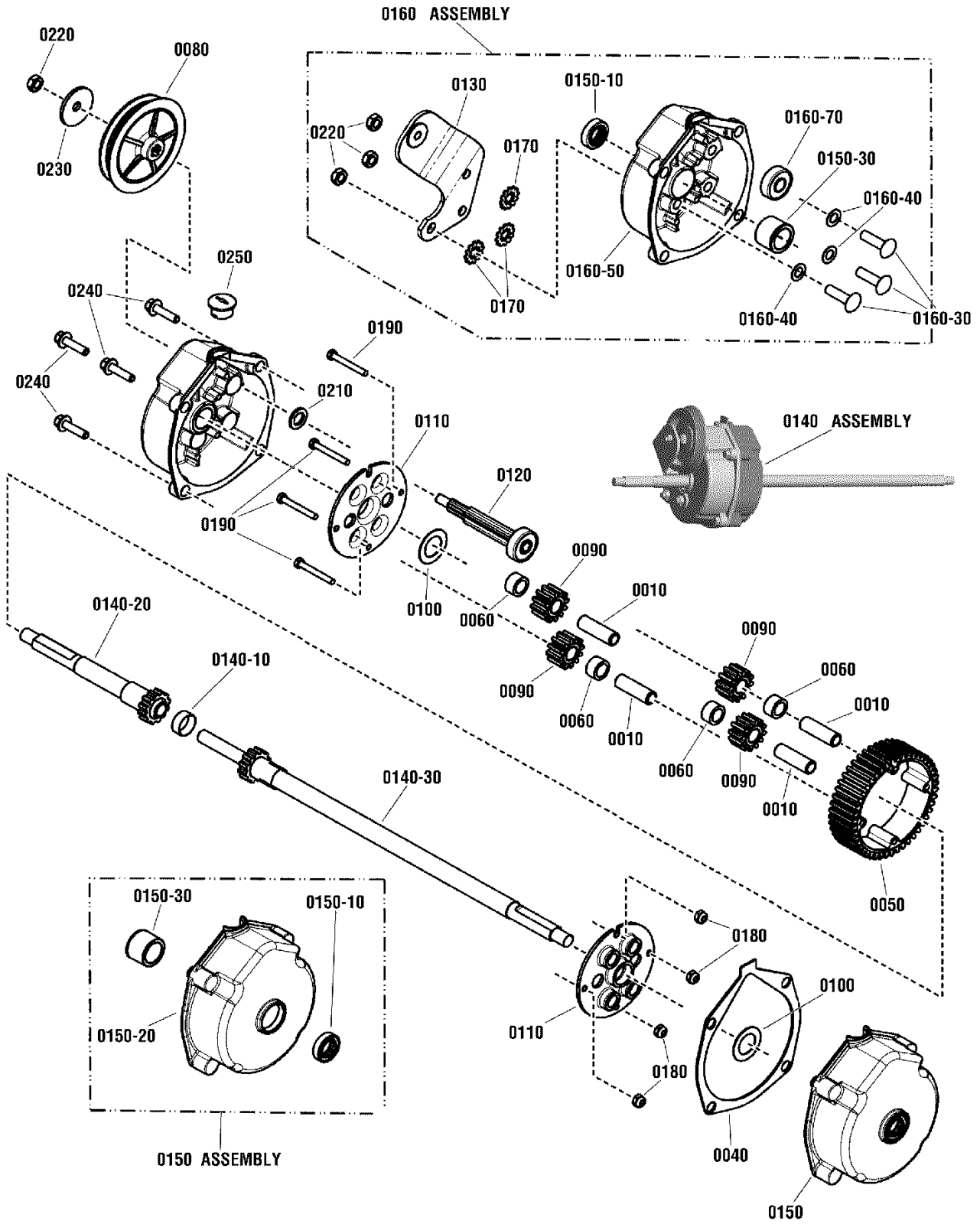
<b>Item</b>	<b>Part No</b>	<b>Qty</b>	<b>Description</b>
1	1753983YP	1	SCREW, 5/16-18 x 5/8 Truss Head Torx
2	7090391SM	1	WASHER, 5/16, Internal Lock, Zinc/Clear (Was 80003683)
3	7034179BMYP	1	LINK, Differential, Commercial
4	703940	1	WASHER, 0.445 ID X 0.780 OD X 0.025 Thk, Wave, ZC/CL (Was 7011724 or 80005390)
5	7012354YP	1	BELT, Poly-V
6	703127	1	NUT, 1/4-20, G5 Zinc/Clear (Was 7090063, 7091576 or 80003586)
7	703462	2	WASHER, 1/4 Internal Tooth Lock, YZ (Was 7090053 or 80004414)
8	7012616YP	1	SUPPORT, Foot Guard
9	703978	1	BOLT, 1/4-20 X 1/2, Carriage, GR5 YZ (Was 7090005, 7091604 or 80004564)
10	7029008YP	1	GUARD, Rear Foot, 21"
11	704009	1	RING, Split, .68 x .93 x .44 (Black) (Was 7023791 or 80005645)
12	703458	1	NUT, 3/8-24 Hex Center Lock, GR B, YZ (Was 7090289 or 80004409)
13	B4300GS	2	SCREW, 1/4-20 X .500, Hex HD, Self-Tap, Zinc/Clear (Was 1925003, 704130, 7090539, 7091122, 720041 & 80002738)
14	7031809YP	1	HOLDER, Bearing (Outer Half), ZC/CL
15	704008	1	O-RING, 1.0 ID X 1.25 OD X 0.125 Thk (Was 7011025 or 80005646)
16	7028014YP	1	BALL BEARING, Spherical O.D., .38 I.D.
17	7031873YP	1	HOLDER, Bearing (Inner Half)
18	703946	1	WASHER, .390 ID X .720 OD X .054 Thk, Flat, ZC/CL (Was 7012316 or 80005532)
19	7019383YP	1	PULLEY, Poly-V, 2.0" OD, Steel
20	703895	2	NUT, 3/8-24, Hex, GR 5, Zinc/Clear (Was 7091630 or 80004865)
21	703930	3	WASHER, 3/8" Internal Tooth Lock, Type A, ZC/CL (Was 7090390 or 80005380)
22	703836	1	STUD, 3/8-24 X 2.38, Single End, ZC/CL (Was 7012111 or 80004419)
23	7012126YP	1	SPRING, Idler Torsion
24	703828	1	SCREW, 1/4-28 x 1-3/8" Hex Head Cap, Grade 5, CZ/CL (Was 7091025 or 80004836)
25	7012124YP	1	PULLEY, Flat Idler, .25 ID, 2.25 OD
26	703972	1	NUT, 1/4-28 Hex Top Lock, GR 5, BZ (Was 7090303 or 80005377)
27	7012122YP	1	SPRING, Clutch
28	331613MA	1	PIN, 3/32 X 3/4, GR5, Cotter, Zinc/Clear (Was 1918447, 703312, 7090555, 7091597 or 80002736)
29	7072284YP	1	SHAFT, Hex (3/8-24 thread, one end)
30	704060	7	SCREW, #10-24 x 1/2" Hex Washer Self-Tap, Torx, ZC/CL (Was 7090913 or 80005972)
31	7031013YP	1	PLATE, Driven Tire Side
32	704059	1	Disc, Rubber Driven, 3" ID (Was 7010927, 7023364 or 80005971)
33	703837	1	STUD, 3/8-24 X 4.5, Plate, ZC/CL (Was 7012125 or 80004420)
34	704061	4	SCREW, #10-32 X 1/4, Hex Washer, Self-Tap, ZC/CL (Was 7090981 or 80005973)
35	7029027YP	1	BEARING, 3/4" ID, Ball, Commercial
36	7300977BMYP	1	THRUST PLATE, Short, Black
37	703975	1	RETAINING RING, 3/4" ID, ZC/CL (Was 7010746 or 80005391)
38	703590	1	WASHER, 3/8 (.406 X .816 X .65), Flat, Zinc/Clear (Was 7090122, 71072MA or 80003536)
39	703461	2	NUT, 1/4-28 Hex, GR5, Zinc/Clear (Was 7090095 or 80004412)
40	703332	2	WASHER, 1/4, Flat, GR5 Zinc/Clear (Was 1921319, 7022473, 5025154, 7091294) or 80002742)
41	7015753YP	2	BALL JOINT, 1/4-28
42	7074145YP	1	LINK, Transfer (1/4-28 thread)
43	703464	1	PIN, 1/16 X 0.50 Cotter, GR 5 Zinc/Clear (Was 1501125MA, 579493MA, 7090673, 7091629, 724605 or 80003540)

**Footnotes:**



<b>Item</b>	<b>Part No</b>	<b>Qty</b>	<b>Description</b>
44	7046784YP	1	BELT, Engine Drive (Stretch)
45	7073528YP	1	DRIVE DISC, Steel
46	703971	1	BUSHING, 0.385 ID X 0.925 OD X 1.018 Thk, ZC/CL (Was 7017696 or 80005376)
47	690272MA	6	NUT, 5/16-18, Serated Lock Flange, GR5, Zinc/Clear (Was 7091601 or 80002728)
48	7029025YP	1	SPRING, Extension, .58 x 3.2
49	703798	2	BOLT, 5/16-18 X .50, Carriage, Zinc/Clear (Was 7090731, 725993, 908156MA or 80004563)
50	703447	1	BOLT, 5/16-18 X .625, Carriage, GR5, Zinc/Clear (Was 1931332, 703125, 7090799, 7091026 or 80003584)
51	703297	2	RETAINER, 5/16 X .625, Push Nut, GR 5, Zinc/Clear (Was 028X64MA, 5025498, 7011791, 720372 or 80002734)
52	703457	1	NUT, 3/8-16, Hex, GR 5, Zinc/Clear (Was 7091302 or 80004413)
53	7052987BMYP	1	ASSEMBLY, Deck Bracket, P21S
54	7033774YP	1	BRACKET, Deck, P21S
55	703941	1	SPACER, .50 ID X .650 OD X 1.750, Thk, ZC/CL (Was 7021758 or 80005392)
56	703973	2	BUSHING, Flanged, .381 x .625 x .62, Metal, CZ/CL (Was 7012306 or 80005378)
57	7600173YP	1	ASSEMBLY, Idler Arm, Bushing & Spacer (Was 7500154BMYP)
58	7032832AYP	1	ARM, Clutch Idler
59	703974	1	SPACER, Idler Arm (.500 ID x .970 Long), ZC/CL (Was 7100447 or 80005379)
61	7051913YP	1	ASSEMBLY, Clutch Idler
62	7061275YP	1	ASSEMBLY, Drive Disc, Square, P21S (Was 7053263YP)
63	7061276YP	1	KIT, Bushing & Hub Assembly (Was 7053217)
64	----	1	HUB, Driven Disc, USE 7061276YP
65	7011108YP	1	BUSHING, Hex Drive, 1.2", .75" OD, .512" ID, Black Nylon
66	7600109YP	1	KIT, Driven Disc Assembly (Was 7501000)

**Footnotes:**



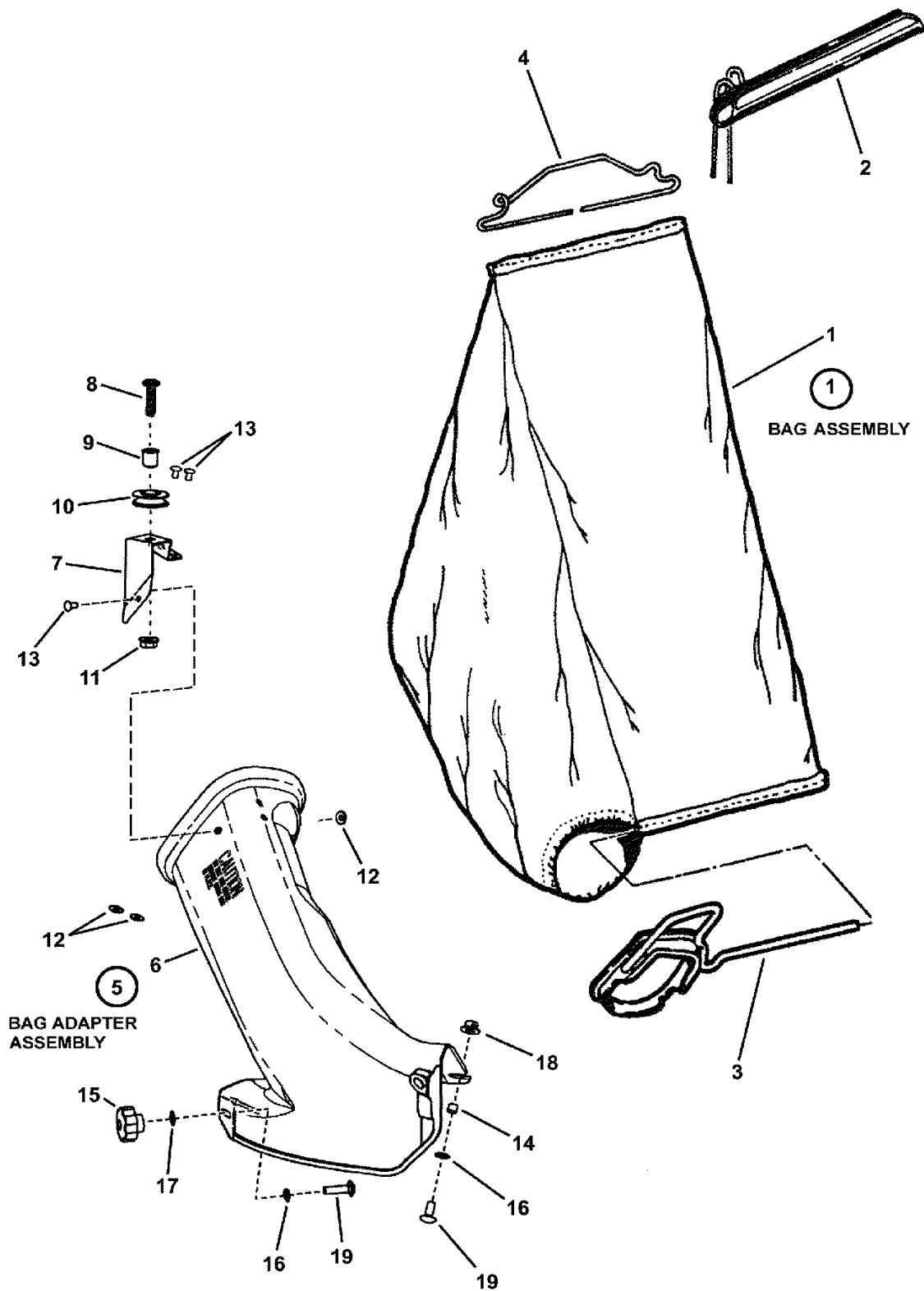


## Transmission - Differential Group

Item	Part No	Qty	Description
0010	7011110YP	4	SHAFT, Pinion
0040	7011774YP	1	GASKET, Housing
0050	7012495YP	1	GEAR, Differential, 46 Tooth
0060	703933	4	SPACER, .700 OD x .480 ID x .380 L, ZC/CL (Was 7012500 or 80005383)
0080	7019213YP	1	PULLEY, Poly-V Belt (3.5 O.D.)
0090	7021115YP	4	GEAR, Pinion (12 Tooth)
0100	7031965YP	2	WASHER, 1.25 X .765 X .03, Thrust, ZC/CL (Was 80003519)
0110	7031970YP	2	PLATE, Differential Gear, V21
0120	7050767YP	1	ASSEMBLY, Input Gear
0130	7051903AYP	1	WELDMENT, Differential Bracket
0140	7053943YP	1	ASSEMBLY, Transmission
0140-10	703934	1	SPACER, .820 OD X .720 ID X .330 L, ZC/CL (Was 7012543 or 80005384)
0140-20	7050830YP	1	ASSEMBLY, Short Axle (Was 7051932)
0140-30	7050831YP	1	ASSEMBLY, Long Axle (Was 7051933)
0150	7053939YP	1	ASSEMBLY, Left Housing (Was 7053938)
0150-10	7012314YP	2	SEAL, 5/8" ID
0150-20	7029033YP	1	HOUSING, Left Hand
0150-30	7029035YP	2	BEARING, Tapered, Differential Housing
0160	7051908YP	1	ASSEMBLY, Housing, Right Hand (Was 7053941)
0160-30	703935	3	BOLT, 5/16-24 x 1-1/8" Rib Neck, GR 5, ZC/BK (Was 7014155 or 80005385)
0160-40	7024442YP	3	GASKET, 5/8" O.D.
0160-50	7029034YP	1	HOUSING, Right Hand
0160-70	7073963YP	1	BEARING, Ball, 1.125 OD, .440 ID, 3.8 Wide
0170	703936	3	WASHER, .325 ID X .850 OD X .041 Thk, Internal External Lock, Type A, ZC/CL (Was 7090189 or 80005386)
0180	703937	4	NUT, #10-32 Nyloc, GR A, ZC/CL (Was 7090376 or 80005387)
0190	703938	4	SCREW, #10-32 x 1-1/2 Hex Head Cap GR5, ZC/CL (Was 7090557 or 80005388)
0210	703349	1	WASHER, .453 X .75 X .073, Flat, ZC/CL (Was 7091720 or 80004406)
0220	703459	4	NUT, 5/16-24, Hex Crown Lock, GR C, Zinc/Clear (Was 7092062 or 80004410)
0230	703939	1	WASHER, .32 ID x 1.40 OD x .10 Thk, Bellville, ZC/CL (Was 7092063 or 80005389)
0240	703833	4	SCREW, 1/4-20 x 1 Hex Washer Self-Tap, ZC/CL (Was 7091825, 7092064 or 80004415)
0250	703931	1	PLUG, Transmission Housing (Was 7016544 or 80005381)
0260	7061017		GREASE, "OO" (4 oz max) (Not Shown)

### Footnotes:

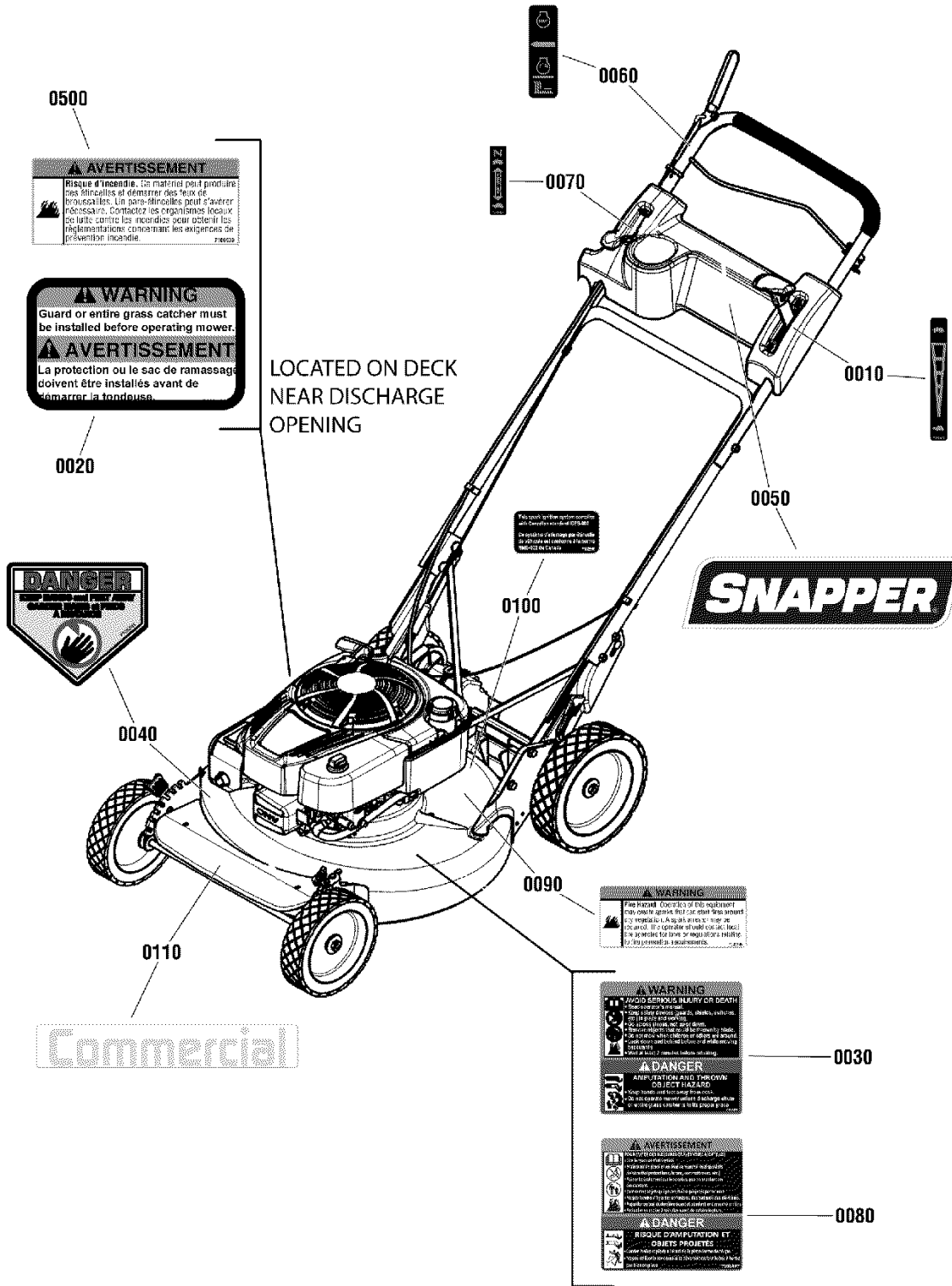
7600176



<b>Item</b>	<b>Part No</b>	<b>Qty</b>	<b>Description</b>
1	----	1	USE 7600176 Grass Bag Assembly, W/Slider, 10.75" W, 26" L, No Graphics (Was 7103205)
2	7050711YP	1	ASSEMBLY, Slider
3	7042489AYP	1	WELDMENT, Bag Connector
4	7019247YP	1	WIRE, Rear Bag
5	7600117YP	1	KIT, Bag Adapter Assembly, W/pulley (Includes items 6 - 13) (Was 7058037)
6	----	1	USE 7600117, Bag Adapter (Was 7047081)
7	7047082AYP	1	BRACKET, Rope Pulley
8	703570	1	SCREW, 5/16-18 X 1.25, Torx Pan Head, GR 5, Zinc/Clear (Was 7091984 or 80004616)
9	703973	1	BUSHING, Flanged, .381 x .625 x .62, Metal, CZ/CL (Was 7012306 or 80005378)
10	7024228SM	1	PULLEY, Nylon, .75 ID, 1.3 OD
11	690272MA	1	NUT, 5/16-18, Serated Lock Flange, GR5, Zinc/Clear (Was 7091601 or 80002728)
12	703942	3	WASHER, 5/32 Flat, ZC/CL (Was 7072107 or 80005393)
13	704032	3	RIVET, 3/16 x .344, Truss HD, ZC/CL (Was 7013860 or 80005709)
14	7024340SM	1	SPACER, .375 OD X .316 ID X .305 L
15	7101022YP	2	KNOB, Fluted (5/16-18 thread) on side chute
16	703297	2	RETAINER, 5/16 X .625, Push Nut, GR 5, Zinc/Clear (Was 028X64MA, 5025498, 7011791, 720372 or 80002734)
17	703936	2	WASHER, .325 ID X .850 OD X .041 Thk, Internal External Lock, Type A, ZC/CL (Was 7090189 or 80005386)
17	703350	1	WASHER, 5/16, Flat SAE, Zinc/Clear (Was 7091076, 7091088 or 80004405)
18	704001	1	NUT, 5/16-18 Large Flange Center Lock, ZC/CL (Was 7090951 or 80005593)
19	703185	2	BOLT, 5/16-18 x 3/4, Carriage, Short Neck, G5, Zinc/Clear (Was 7091508 or 80004072)

Not for  
Reproduction

**Footnotes:**



---

<b>Item</b>	<b>Part No</b>	<b>Qty</b>	<b>Description</b>
0010	7075471YP	1	DECAL, Speed Shift
0020	7102324YP	1	DECAL, Chute / Deflector FC
0030	7100984YP	1	DECAL, Warning / Danger
0040	7105261YP	1	DECAL, CPSC, French/English
0050	7104148YP	1	DECAL, Logo, Snapper, 7.88"
0060	7029782MA	1	DECAL, OPC Bail, International Symbols
0070	7075524YP	1	DECAL, Throttle Control, KWV
0080	7101497YP	1	DECAL, Warning / Danger, French /English
0090	7102746YP	1	DECAL, Spark Arrestor
0100	7102996YP	1	DECAL, ICES Compliance
0110	7104873YP	1	DECAL, Commercial, 5.35"
0500	7106039YP	1	DECAL, Spark Arrestor, French

Not for  
Reproduction

**Footnotes:**

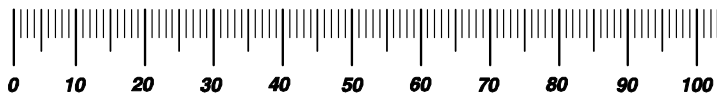
Not for  
Reproduction

# Hardware Identification & Torque Specifications

Torque Specification Chart								
FOR STANDARD METRIC MACHINE HARDWARE (Tolerance ± 20%)								
Property Class	5.6		8.8		10.9		12.9	
	Class 5.6		Class 8.8		Class 10.9		Class 12.9	
Size Of Hardware	in/lbs		in/lbs		in/lbs		in/lbs	
	ft/lbs	Nm.	ft/lbs	Nm.	ft/lbs	Nm.	ft/lbs	Nm.
M3	5.88	.56	13.44	1.28	19.2	1.80	22.92	2.15
M4	13.44	1.28	30.72	2.90	43.44	4.10	52.56	4.95
M5	26.4	2.50	60.96	5.75	5.97	8.10	7.15	9.7
M6	44.64	4.3	7.3	9.9	10.3	14	12.1	16.5
M7	5.2	7.1	12.1	16.5	16.9	23	19.9	27
M8	7.7	10.5	17.7	24	25	34	29	40
M10	15	21	35	48	50	67	59	81
M12	26	36	61	83	86.2	117	103	140
M14	42	58	101	132	136	185	162	220
M16	64	88	147	200	210	285	250	340
M18	89	121	202	275	287	390	346	470
M20	126	171	290	390	405	550	486	660
M22	169	230	390	530	559	745	656	890
M24	217	295	497	375	708	960	840	1140
M27	320	435	733	995	1032	1400	1239	1680
M30	435	590	995	1350	1401	1900	1681	2280
M33	590	800	1349	1830	1902	2580	2278	3090
M36	759	1030	1740	2360	2441	3310	2935	3980
M39	988	1340	2249	3050	3163	4290	3798	5150

Torque Specification Chart						
FOR STANDARD MACHINE HARDWARE (Tolerance ± 20%)						
Hardware Grade	No Marks		SAE Grade 5		SAE Grade 8	
	SAE Grade 2		SAE Grade 5		SAE Grade 8	
Size Of Hardware	in/lbs		in/lbs		in/lbs	
	ft/lbs	Nm.	ft/lbs	Nm.	ft/lbs	Nm.
8-32	19	2.1	30	3.4	41	4.6
8-36	20	2.3	31	3.5	43	4.9
10-24	27	3.1	43	4.9	60	6.8
10-32	31	3.5	49	5.5	68	7.7
1/4-20	66	7.6	8	10.9	12	16.3
1/4-28	76	8.6	10	13.6	14	19.0
5/16-18	11	15.0	17	23.1	25	34.0
5/16-24	12	16.3	19	25.8	29	34.0
3/8-16	20	27.2	30	40.8	45	61.2
3/8-24	23	31.3	35	47.6	50	68.0
7/16-14	30	40.8	50	68.0	70	95.2
7/16-20	35	47.6	55	74.8	80	108.8
1/2-13	50	68.0	75	102.0	110	149.6
1/2-20	55	74.8	90	122.4	120	163.2
9/16-12	65	88.4	110	149.6	150	204.0
9/16-18	75	102.0	120	163.2	170	231.2
5/8-11	90	122.4	150	204.0	220	299.2
5/8-18	100	136	180	244.8	240	326.4
3/4-10	160	217.6	260	353.6	386	525.0
3/4-16	180	244.8	300	408.0	420	571.2
7/8-9	140	190.4	400	544.0	600	816.0
7/8-14	155	210.8	440	598.4	660	897.6
1-8	220	299.2	580	788.8	900	1,244.0
1-12	240	326.4	640	870.4	1,000	1,360.0

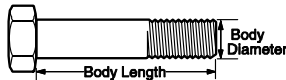
The guides and ruler furnished below are designed to help you select the appropriate hardware.



Nut, M8

Thread Diameter (mm)  
Inside Diameter (in)    Threads per inch

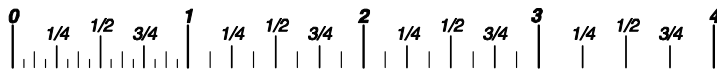
Nut, 1/2-16



Screw, M8- 1.25 x 25

Thread Diameter (mm)    Distance between threads (mm)    Body Length (mm)  
Body Diameter    Threads per inch    Body Length (in)

Screw, 1/2- 16 x 2



## Standard Hardware Sizing

When a washer or nut is identified as 1/2" (M8), this is the *Nominal size*, meaning the *inside diameter* is 1/2 inch (8mm metric thread diameter); if a second number is present it represents the *threads per inch* (distance between threads).

When bolt or capscrew is identified as 1/2 - 16 x 2" (M8 - 1.25 x 50), this means the *Nominal size*, or body diameter is 1/2 inch (8mm metric thread diameter), the second number, 16, represents the *threads per inch*, (1.25 thread diameter). The final number is the body length of the bolt or screw, 2 inches (50mm).

## NOTES

- These torque values are to be used for all hardware excluding: locknuts, self-tapping screws, thread forming screws, sheet metal screws and socket head setscrews.
- Recommended seating torque values for locknuts:
  - for prevailing torque locknuts - use 65% of grade5 torques.
  - for flange whizlock nuts and screws - use 135% of grade 5 torques.
- Unless otherwise noted on assembly drawings, all torque values must meet this specification.

## Common Hardware Types

Hex Head Capscrew



Washer



Carriage Bolt



Lockwasher



Hex Nut



## Wrench & Fastener Size Guide

1/4" Bolt or Nut Wrench—7/16"	5/16" Bolt or Nut Wrench—1/2"	3/8" Bolt or Nut Wrench—9/16"	7/16" Bolt or Nut Wrench (Bolt)—5/8" Wrench (Nut)—11/16"	1/2" Bolt or Nut Wrench—3/4"
M6 Bolt or Nut Wrench—10mm	M8 Bolt or Nut Wrench—13mm	M10 Bolt or Nut Wrench—17mm	M12 Bolt or Nut Wrench—19mm	M14 Bolt or Nut Wrench—22mm

*Parts Manual for*

# **SNAPPER®**

## **22" STEEL DECK WALK BEHIND COMMERCIAL MOWER SERIES 20**

Not for  
Reproduction

IT IS THE POLICY OF BRIGGS & STRATTON CORP TO IMPROVE ITS PRODUCTS WHENEVER IT IS POSSIBLE AND PRACTICAL TO DO SO. WE RESERVE THE RIGHT TO MAKE CHANGES OR ADD IMPROVEMENTS AT ANY TIME WITHOUT INCURRING ANY OBLIGATION TO MAKE SUCH CHANGES ON PRODUCTS

**Briggs & Stratton Yard Power Products Group**

535 Macon Road  
McDonough, GA, 30253 U.S.A.  
800-935-2967

[www.snapper.com](http://www.snapper.com)

Copyright © 2013 Briggs & Stratton Corporation  
Milwaukee, WI USA. All Rights Reserved

**Manual No. 7106167**

**Revision: - 9/30/2013**