

# OWNER'S GUIDE

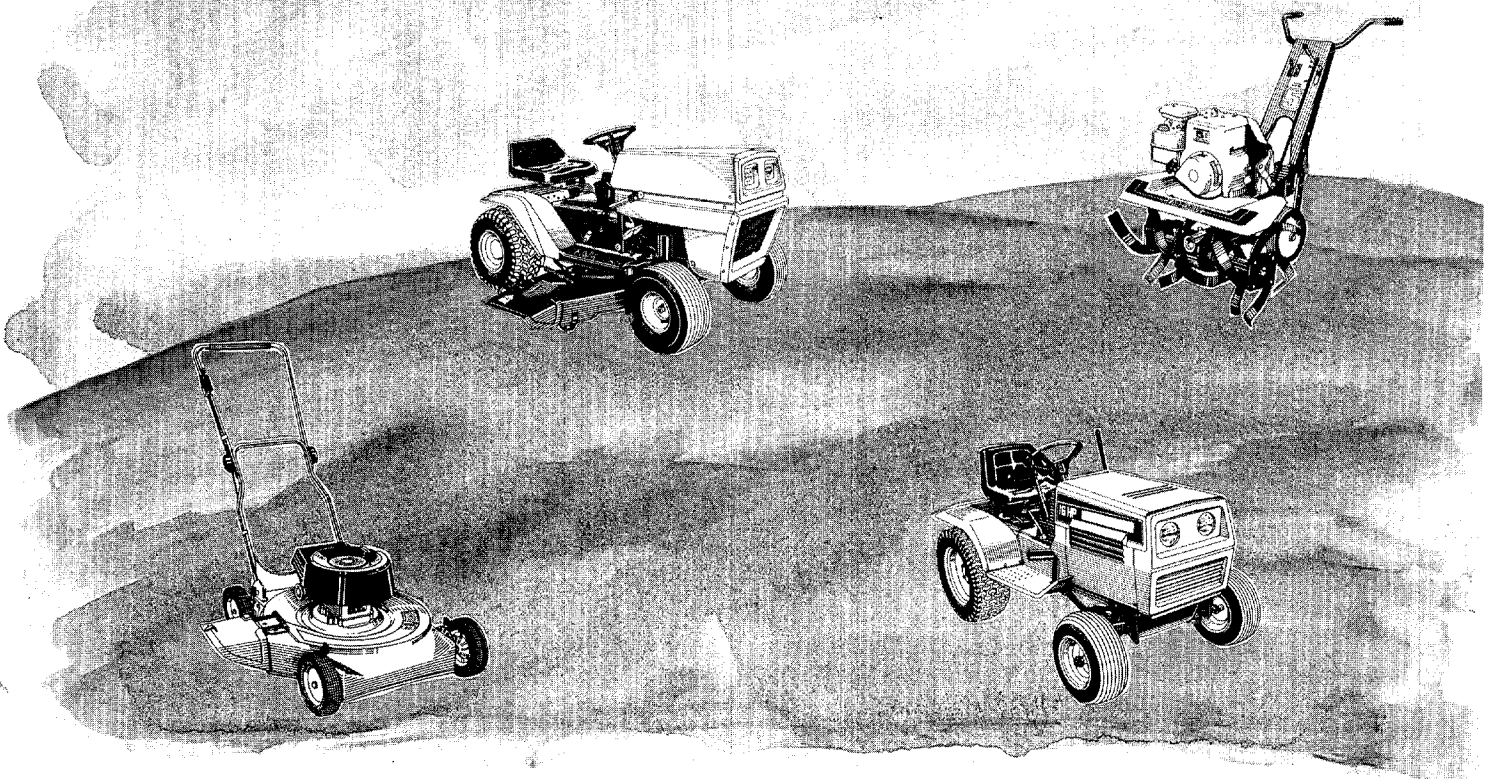
FIFTY CENTS

**MODEL  
NO.  
139-380A**

**ASSEMBLY  
OPERATION  
PARTS  
MAINTENANCE**

**26"  
RIDING  
MOWER**

**IMPORTANT:  
READ SAFETY RULES  
& INSTRUCTIONS**



PRINTED IN U.S.A.

FORM NO. 770-8279

## **LIMITED WARRANTY**

For one year from the date of original retail purchase, MTD PRODUCTS INC will either repair or replace, at its option, free of charge, F.O.B. factory or authorized service firm, any part or parts found to be defective in material or workmanship. Transportation charges under this warranty must be paid by the purchaser unless return is requested by MTD PRODUCTS INC.

This warranty will not apply to any part which has become inoperative due to misuse, excessive use, accident, neglect, improper maintenance, alterations, or unless the unit has been operated and maintained in accordance with the instructions furnished. This warranty does not apply to the engine, motor, battery, battery charger or component parts thereof. Please refer to the applicable manufacturer's warranty on these items.

This warranty will not apply where the unit has been used commercially.

Warranty service is available through your local authorized service dealer or distributor. If you do not know the dealer or distributor in your area, please write to the Customer Service Department of MTD.

The return of a complete unit will not be accepted by the factory unless prior written permission has been extended by MTD.

This warranty gives you specific legal rights. You may also have other rights which vary from state to state.

### **WARNING TO PURCHASERS OF INTERNAL COMBUSTION ENGINE EQUIPPED MACHINERY OR DEVICES IN THE STATE OF CALIFORNIA**

The equipment which you have just purchased does not have a spark arrester. If this equipment is used on any forest covered land, brush covered land, or grass covered unimproved land in the State of California, before using on such land, the California law requires that a spark arrester be provided. In addition, spark arrester is required by law to be in effective working order. The spark arrester must be attached to the exhaust system and comply with Section 4442 of the California Public Resources Code.

# **IMPORTANT**

It is suggested that this manual be read in its entirety before attempting to assemble or operate. Keep this manual in a safe place for future reference and for ordering replacement parts.

This unit is shipped WITHOUT GASOLINE or OIL. After assembly, see operating section of this manual for proper fuel and amount.

Your rotary mower is a precision piece of power equipment, not a plaything. Therefore exercise extreme caution at all times.

## **SAFE OPERATION PRACTICES FOR RIDING VEHICLES**

1. Know the controls and how to stop quickly—  
READ THE OWNER'S MANUAL.
2. Do not allow children to operate vehicle. Do not allow adults to operate it without proper instruction. Only persons well acquainted with these rules of safe operation should be allowed to use your mower.
3. Do not carry passengers.
4. Keep the area of operation clear of all persons, particularly small children and pets. Stop engine when they are in the vicinity of your mower. Although the area of operation should be completely cleared of foreign objects, a small object may have been overlooked and could be accidentally thrown by the mower in any direction.
5. Clear work area of objects which might be picked up and thrown by the mower in any direction.
6. Disengage all attachment clutches and shift into neutral before attempting to start engine.
7. Disengage power to attachment(s) and stop engine before leaving operator position.
8. Disengage power to attachment(s) and stop engine before making any repairs or adjustments. Disconnect the spark plug wire and keep the wire away from the plug to prevent accidental starting.
9. Before attempting to unclog the mower or discharge chute, stop the engine and be sure the blade(s) have stopped completely. Disconnect the spark plug wire and keep the wire away from the plug to prevent accidental starting.
10. Disengage power to attachment(s) when transporting or not in use.
11. Take all possible precautions when leaving vehicle unattended such as disengaging power-take-off, lowering attachments, shifting into neutral, setting parking brake, stopping engine and removing key.
12. Do not stop or start suddenly when going uphill or downhill. Mow up and down face of steep slopes; never across the face.
13. Reduce speed on slopes and in sharp turns to prevent tipping or loss of control. Exercise extreme caution when changing direction on slopes.
14. Stay alert for holes in terrain and other hidden hazards.
15. Use care when pulling loads or using heavy equipment.
  - A. Use only approved drawbar hitch points.
  - B. Limit loads to those you can safely control.
  - C. Do not turn sharply. Use care when backing.
  - D. Use counterweight(s) or wheel weights when suggested in owner's manual.
16. Watch out for traffic when crossing or near roadways.
17. When using any attachments never direct discharge of material toward bystanders nor allow anyone near vehicle while in operation.
18. Handle gasoline with care—it is highly flammable.
  - A. Use approved gasoline container.
  - B. Never remove cap or add gasoline to a running or hot engine or fill fuel tank indoors. Wipe up spilled gasoline.
  - C. Open doors if engine is run in garage—exhaust fumes are dangerous. Do not run engine indoors.
19. Keep the vehicle and attachments in good operating condition, and keep safety devices in place. Use guards as instructed in owner's manual.
20. Keep all nuts, bolts, and screws tight to be sure the equipment is in safe working condition.
21. Never store the equipment with gasoline in the tank inside a building where fumes may reach an open flame or spark. Allow engine to cool before storing in any enclosure.
22. To reduce fire hazard keep engine free of grass, leaves or excessive grease.
23. The vehicle and attachments should be stopped and inspected for damage after striking a foreign object, and the damage should be repaired before restarting and operating the equipment.
24. Do not change the engine governor settings or overspeed the engine.
25. When using the vehicle with mower, proceed as follows:
  - (1) Mow only in daylight or in good artificial light.
  - (2) Never make a cutting height adjustment while engine is running if operator must dismount to do so.
  - (3) Shut the engine off and wait until the blade comes to a complete stop before removing the grass catcher.
  - (4) Check blade mounting bolts for proper tightness at frequent intervals.
26. Check grass catcher bags frequently for wear or deterioration. For safety protection replace only with new bag meeting original equipment specifications.
27. Look behind to make sure the area is clear before placing the transmission in reverse and backing up.

# INDEX

Limited Warranty .....	2
Safe Operation Practices .....	3
Assembly Instructions .....	4
Operation .....	5
Lubrication .....	7
Belt Replacement .....	10
Off-Season Storage .....	11

Trouble Shooting Chart .....	12
Repair Parts Electrical System .....	13
Repair Parts Differential .....	14
Repair Parts Transmission .....	15
Repair Parts Rider .....	16 thru 21
Deck Linkage .....	22
Parts Information .....	Back Cover

GRASS CATCHER Model No. 199-015A is available as optional equipment for the mowers shown in this manual.



The mower should not be operated without the entire grass catcher or chute deflector in place.

## NOTE

Under normal usage bag material is subject to wear, and should be checked periodically. Be sure any replacement bag complies with the mower manufacturer's recommendations.

For replacement bags, use only factory authorized replacement bag No. 764-0121.

## IMPORTANT

After striking a foreign object, stop the engine. Remove wire from spark plug, thoroughly inspect the mower for any damage, and repair the damage before restarting and operating the mower.

The steering wheel and seat, with the necessary hardware, are easily assembled to the machine.

## TIRE PRESSURE

**FOR SHIPPING PURPOSES, THE TIRES ON YOUR UNIT MAY BE OVER-INFLATED. TIRE PRESSURE SHOULD BE REDUCED BEFORE UNIT IS PUT INTO OPERATION. PRESSURE SHOULD BE APPROXIMATELY 15 P.S.I. EQUAL TIRE PRESSURE SHOULD BE MAINTAINED ON ALL TIRES. MAXIMUM TIRE PRESSURE IS 30 P.S.I.**



## CAUTION

Installation of tire to rim:

1. Lubricate tire beads and rim flanges.
2. Do not exceed 30 P.S.I. when seating beads.
3. Adjust to recommended pressure after beads are sealed.

## ASSEMBLY

### NOTE

Reference to right hand or left hand side of machine is from the driver's seat facing forward.

### Attaching Steering Wheel

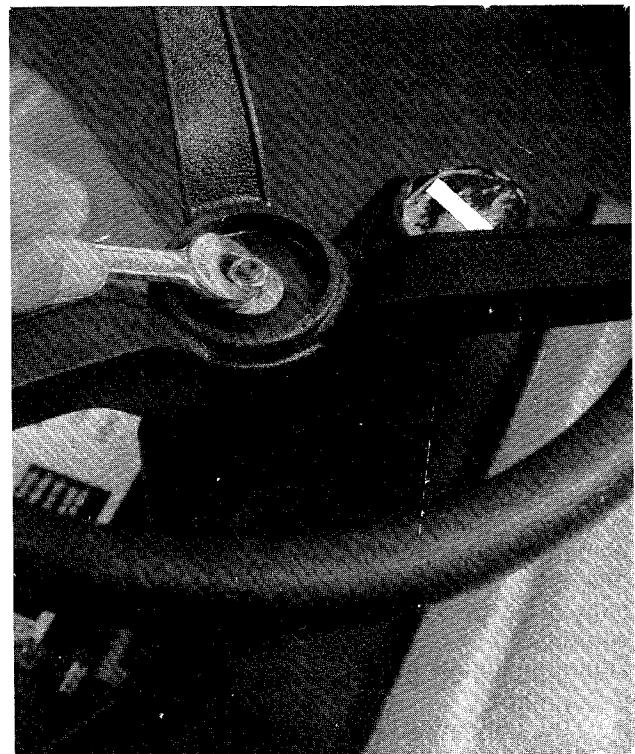


Figure 1.

1. Place the steering wheel over the steering column extending through the dash. Line up the flats on the steering column with the flats in the steering wheel. (See figure 1.)
2. Place the washer with the cupped side down over the steering column and secure.
3. Place the cap over the center of the steering wheel and seat it with your hand.

### Seat Assembly

Use the hex nut and lockwasher to attach the seat to the seat spring in one of the three adjustment holes. (See figure 2.)

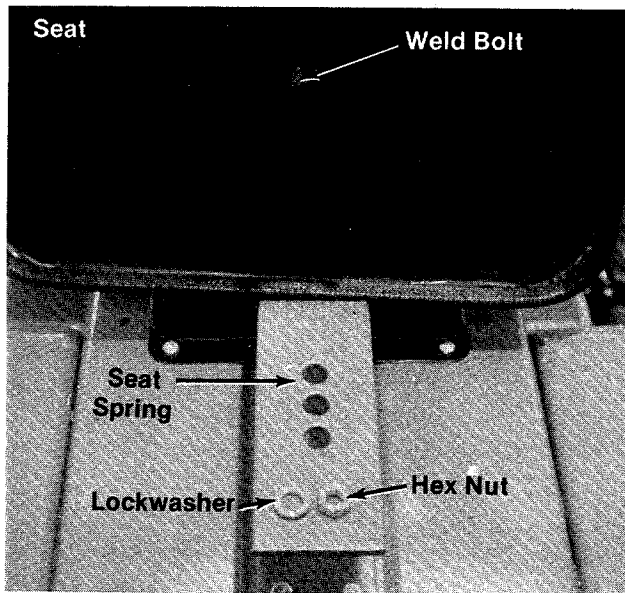
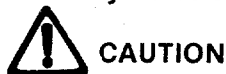


Figure 2.

## OPERATION

Read and Heed Safety Rules on page 2.



**CAUTION**

1. Keep all shields and guards in place.
2. Before leaving operator's position:
  - Shift transmission in neutral
  - Set the parking brake
  - Disengage the blade engagement lever
  - Shut off engine
  - Remove ignition key
3. Wait for all movement to stop, remove and ground the spark plug wire to the engine block before servicing the machine.
4. Keep people and pets a safe distance away from the machine.

Before starting the engine fill the crankcase with oil. Refer to the Engine Operation and Maintenance Manual.

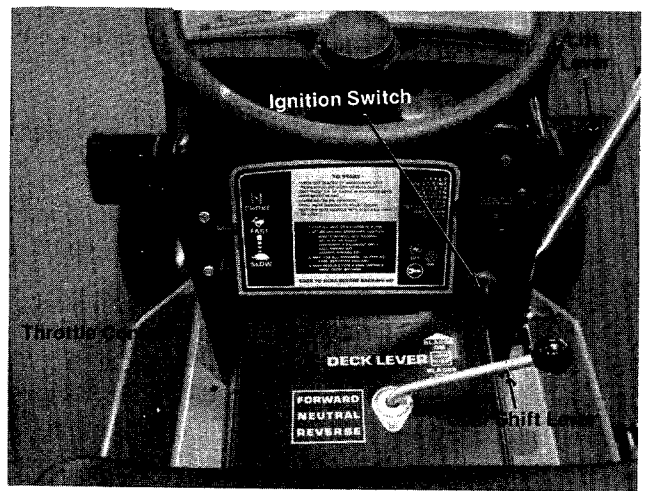


Figure 3.

### Ignition Switch

The ignition switch is located on the right side of the dashboard. Turn the key to the START position to start the engine. When the engine is running leave the key in the ON position. To stop the engine turn the key to the OFF position.



**CAUTION**

Remove the key from the riding mower when the mower is not in use to prevent accidental starting.

### Gear Shift Lever

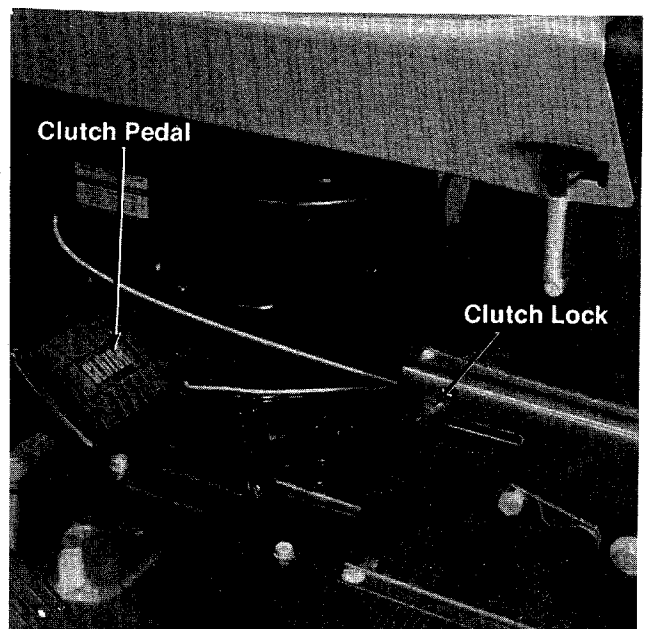


Figure 4.

The reversing transmission has a forward gear, reverse gear and a neutral position. You must depress the clutch pedal when you stop and when you shift from neutral into either forward or reverse gear.



### CAUTION

Do not force the shift lever.

If the gear shift lever does not easily move into either the forward or reverse gear it may be necessary to release the clutch pedal slightly until the gear shift lever moves easily into gear. (See figure 3.)

### Clutch Lock

When the clutch pedal is depressed all the way it can be locked by lifting up the lock button. The pedal will stay depressed. To release, depress the clutch pedal. (See figure 4.)

### Clutch Pedal

The clutch pedal is located on the left side of the mower and is used to disengage the drive mechanism. Depressing the clutch pedal will disengage the engine from the drive train. The clutch pedal must be depressed when you come to a stop. (See figure 4.)

### Brake Pedal

The brake pedal is located on the right side of the mower and is operated by depressing it with your right foot. When coming to a complete stop it is necessary to depress both the clutch and the brake pedals. (See figure 5.)

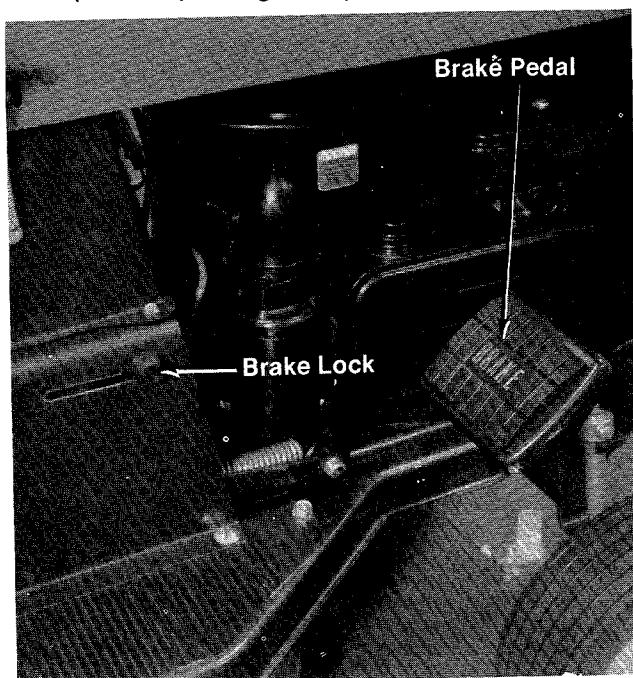


Figure 5.

### Brake Lock

The brake lock is located on the right side of the mower. To lock the brake, depress the brake pedal and lift up the lock button. The pedal will stay depressed. To release, depress the pedal. (See figure 5.)

### Lift Lever

The lift lever is used to adjust the cutting deck and engage the drive mechanism. Pulling it all the way back and locking it disengages the blades. The engine will not start unless the lift lever is in the disengaged position. (See figure 5.)

### Setting the Cutting Height

1. Remove the two deck wheels by unscrewing the axle bolts. (See figure 6.)
2. Using the height of cut stop, set the cutting height lever in the desired position. (See figure 7.)
3. Move the lift lever forward until it rests against the height of cut stop.
4. Reassemble the deck wheels to one of the four wheel positions on the cutting deck. Use the lowest hold you can without letting the deck wheels touch the ground.



### NOTE

If you want to let the deck follow the exact contour of the ground, use the two deck wheels to set the cutting height and move the height of cut stop lever all the way forward.

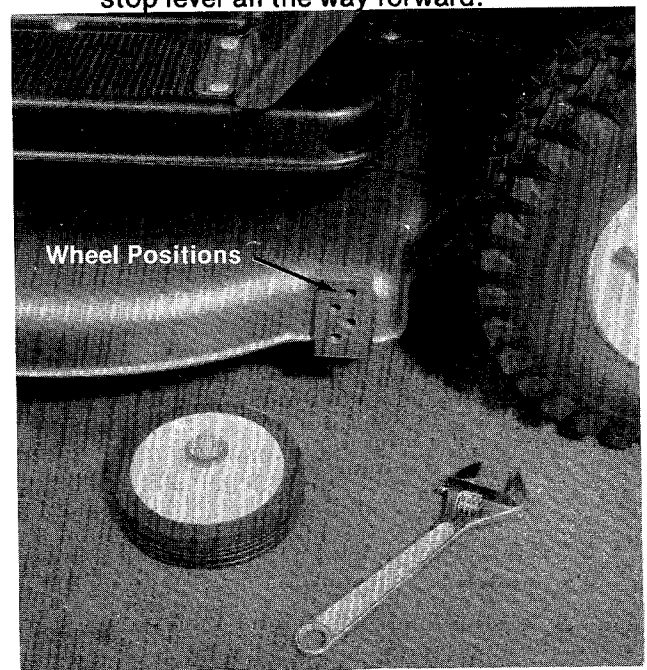
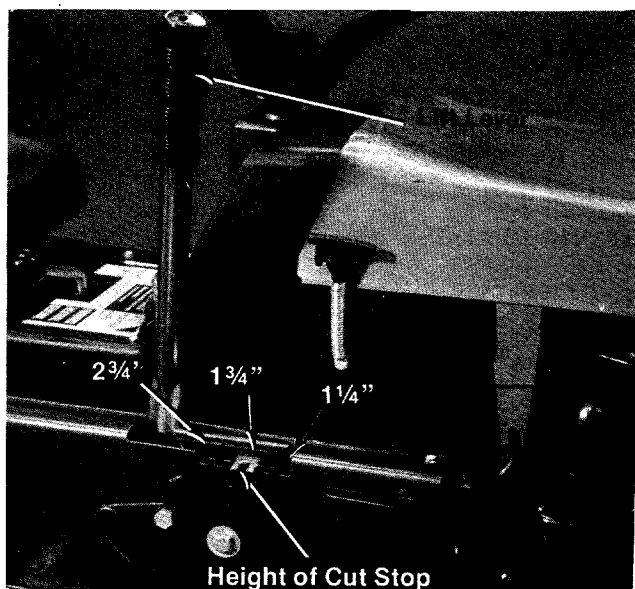


Figure 6.

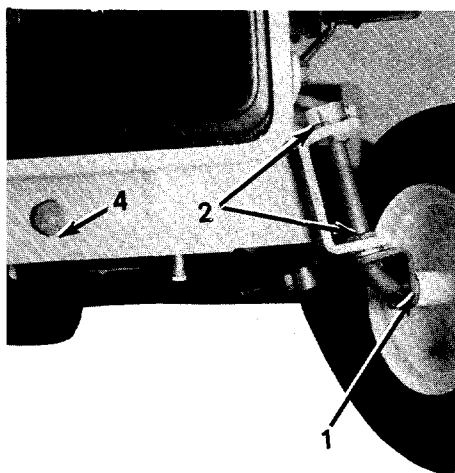


**Figure 7.**

Maintenance and adjustments for the engine are covered in the Engine Operating and Maintenance Instructions section of this handbook.

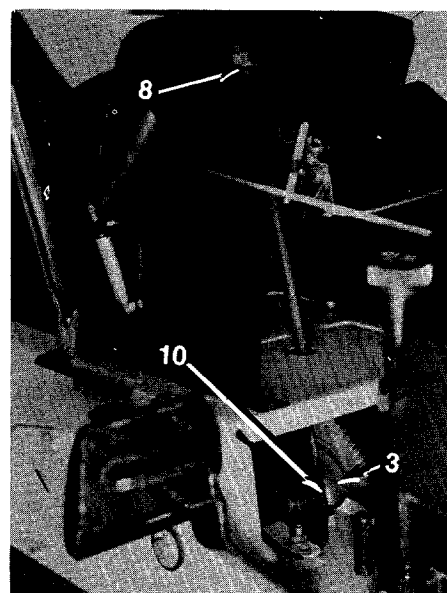
## LUBRICATION

1. **Front Wheel Bearings (4).** Lubricate with SAE 30 oil once a season or after every 25 hours of operation. (See figure 8.)
2. **King Pin Bearings (4).** Lubricate with SAE 30 oil once a season or after every 25 hours of operation. (See figure 8.)



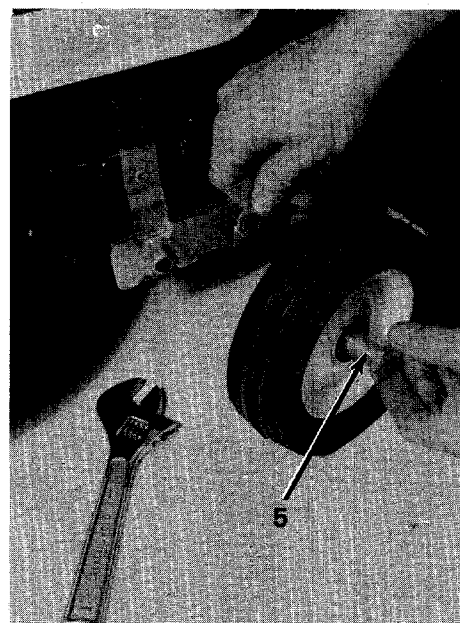
**Figure 8.**

3. **Steering Gears.** Lubricate the two gears with automotive multi-purpose grease once a season. (See figure 9.)
4. **Pivot Bolt.** Lubricate with SAE 30 oil once a season. (See figure 8.)



**Figure 9.**

5. **Deck Wheel Bearings (4).** Remove the axle bolt and lubricate with multi-purpose automotive grease once a season or after every 25 hours of operation. (See figure 10.)



**Figure 10.**

6. **Differential.** Lubricated at the factory with 2 ounces of high temperature grease (450°F.) The grease should only be checked or replaced if the differential is disassembled for repair. (See figure 11.)
7. **Transmission.** Lubricated at the factory with 12 ounces of E.P. Lithium grease. The grease should only be checked or replaced if the transmission is disassembled for repair.
8. **Steering Column Bearings (2).** Oil once a season with SAE 30 oil. (See figure 9.)

9. **Rear Axle Bearings (3).** Requires no lubrication. (See figure 11.)
10. **Steering Shaft Bearings (2).** Requires no lubrication. (See figure 9.)
11. **Chain.** Remove and clean with kerosene. Lubricate with an oil soaked rag. (See figure 11.)

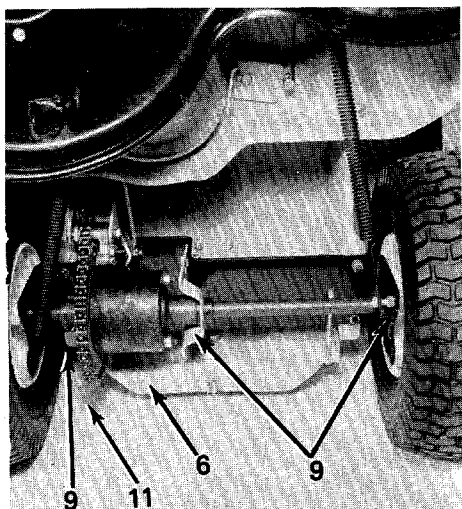


**WARNING**

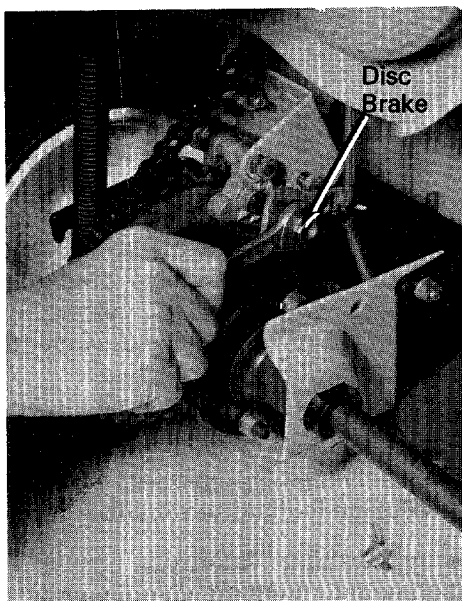
Do not get oil on the sprocket or brake pads.

The following items have sealed bearings and require no further lubrication.

Blade Spindle Bearings  
Tie Rod Ends  
Idler Bearings



**Figure 11.**  
**BRAKE ADJUSTMENT**



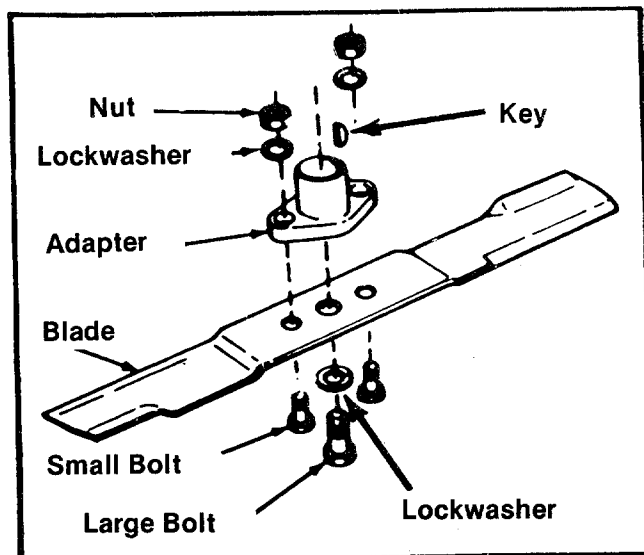
**Figure 12.**

The disc brake assembly is located on the rear axle. Before adjusting the brake it is necessary to loosen the jam nut on the center stud. To adjust, tighten the locknut one half turn and then test the brakes. Repeat if necessary. Tighten the jam nut. (See figure 12.)

### CUTTING BLADES

The blades may be removed for sharpening or replacement as follows:

1. Remove the large bolt and lockwasher holding the blade and adapter to the engine blade spindle. (See figure 13.)
2. Remove the blade and adapter from the blade spindle.
3. Be careful not to lose the key on the spindle.
4. Remove the two small bolts, lockwashers and nuts holding the blade to the adapter.



**Figure 13.**

When sharpening the blade, follow the original angle of grind as a guide. It is extremely important that each cutting edge receives an equal amount of grinding to prevent an unbalanced blade. An unbalanced blade will cause excessive vibration when rotating at high speeds and may cause damage to the mower.

When grinding or filing the blade, remove equal amounts of metal from both edges to keep the blade in balance. The blade can be tested for balance by balancing it on a screwdriver. Remove metal from the heavy side until it balances evenly. (See figure 14.)

When replacing the blade be sure the side of the blade marked "Bottom" or having the part number is facing the ground when the mower is in the operating position.



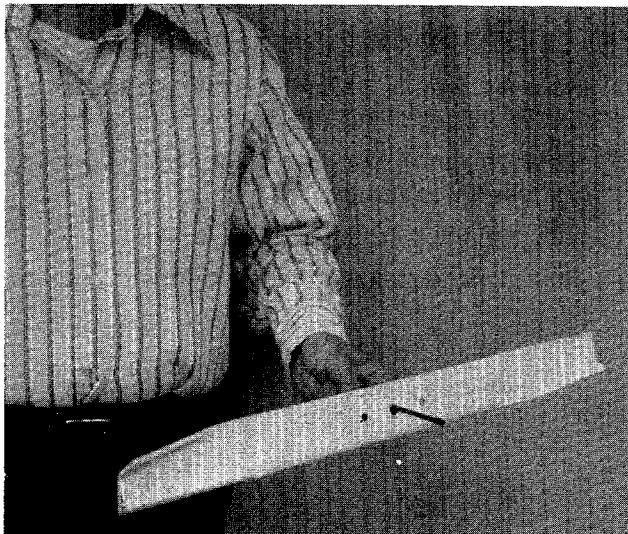


Figure 14.

### CHAIN ADJUSTMENT

After the first five hours of operation the initial slack should be removed from the chain. The chain should be tight enough so that it deflects approximately 1/2 inch when it is depressed with the thumb.

1. To tighten the chain, loosen the two locking nuts on each side of the rear axle. (See figure 15.)
2. Tighten the adjusting nuts at corners of rear chassis until you have the proper chain tension.
3. Tighten the locking nuts on the rear axle.

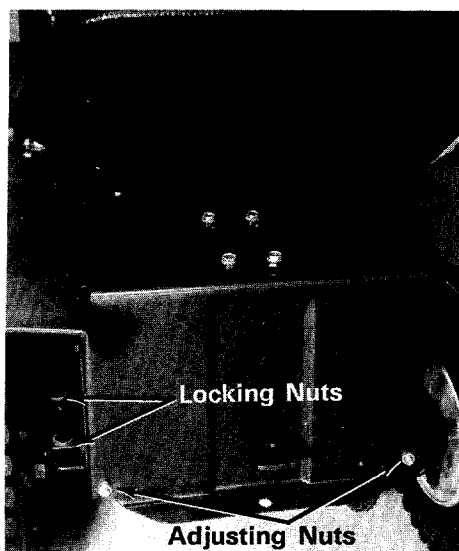


Figure 15.

### WHEEL ALIGNMENT

The caster (forward slant of the king pin) and the camber (tilt of the wheels out at the top) requires no adjustment. Automotive steering principles have been used to determine the caster and camber on the mower. The front wheels should toe-in 1/8 inch. (See figure 16.)

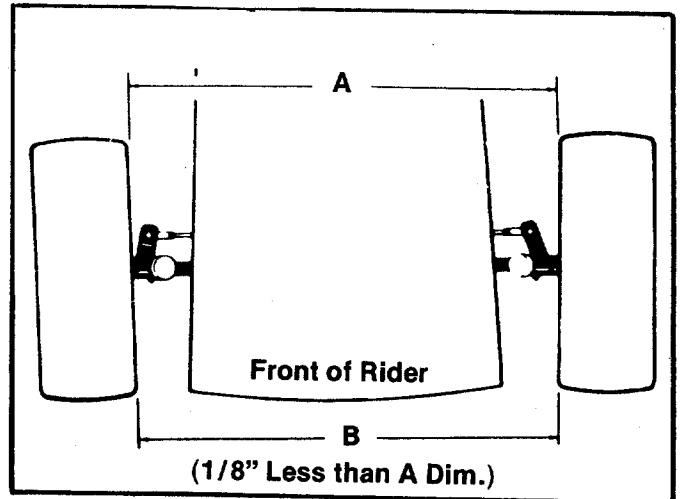


Figure 16.

### TO ALIGN THE WHEELS

1. Remove the cotter pin holding the ferrule to the front axle assembly. (See figure 17.)
2. Loosen the locknut.
3. Screw the ferrule in or out until the proper adjustment is made.
4. Place the ferrule back into the front axle assembly and secure it with the cotter pin and tighten the locknut.

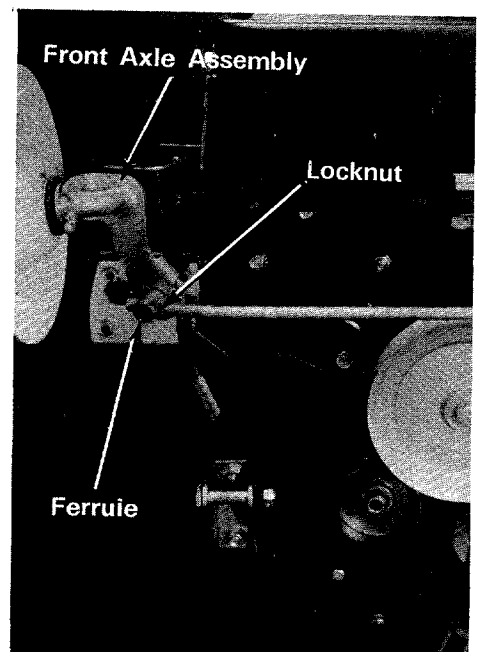


Figure 17.

# BELTS REMOVAL AND REPLACEMENT



**WARNING**

Before up-ending vehicle for maintenance, position it on a hard level surface and ensure area is clear of children and pets.

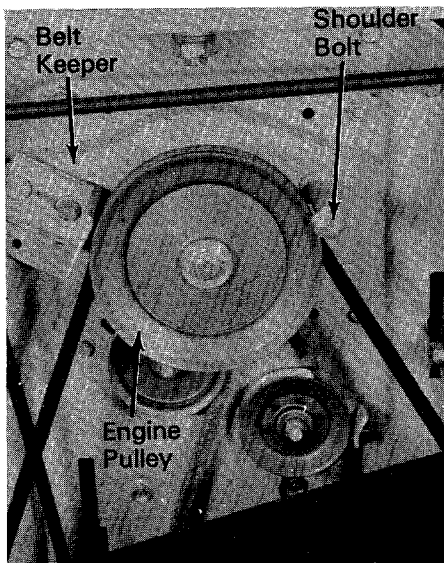
Disconnect the spark plug wire and ground it against the engine.

To prevent gasoline from leaking from the gasoline tank, remove the cap, place a piece of plastic film over the neck of the tank and screw on the cap or drain tank.

1. Put the lift lever in the disengaged position.
2. Remove the belt keeper and shoulder bolt on the engine pulley. (See figure 18.)
3. Remove the blade belt from the engine pulley.
4. Put the lift lever in the engaged position.
5. Remove the two tension springs on the rear of the deck.
6. Remove the six pins holding the deck to the frame (See figure 19.)
7. Lift off the deck and set it aside.

## BLADE BELT (See figure 20.)

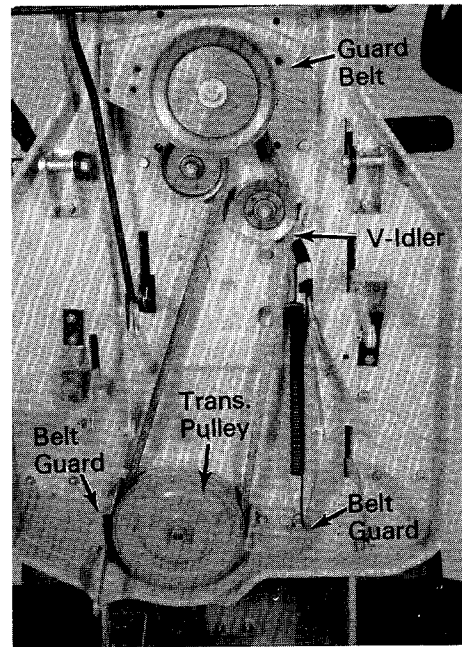
1. Take off both belt guards on the deck.
2. Remove and replace the belt with a new one.



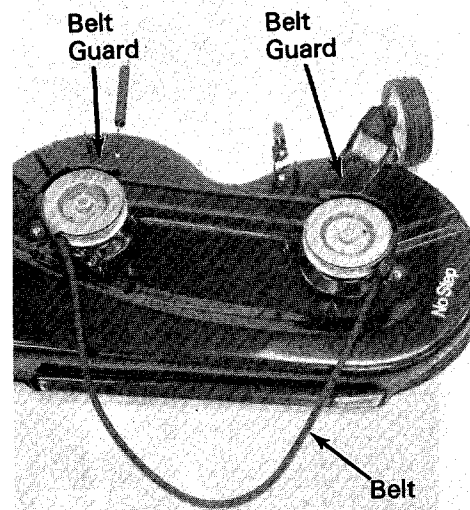
**Figure 18.**

## TRANSMISSION BELT (See figure 19.)

1. Remove the entire belt guard from the engine pulley by removing the two front engine bolts.
2. Remove the two belt guards from the transmission pulley.
3. Remove the V-idler pulley.
4. Remove and replace the transmission pulley.



**Figure 19.**



**Figure 20.**

# OFF-SEASON STORAGE OF RIDER MOWER

If the machine is to be inoperative for a period longer than 30 days, the following procedures are recommended:



**WARNING**

Do not drain fuel while smoking, or if near an open fire.

1. Working outdoors, drain all fuel from the fuel tank. Use a clean dry cloth to absorb the small amount of fuel remaining in the tank, then run the engine until all fuel in the carburetor is exhausted.

2. Drain all the oil from the crankcase (this should be done after the engine has been operated and is still warm) and refill the crankcase with clean new oil.

3. Disconnect the spark plug wire and remove the spark plug from the cylinder. Pour about 2 or 3 tablespoons of engine oil into the cylinder through the spark plug hole, and then turn the engine over several times to spread out the oil. Replace the spark plug, but do not connect the wire.

4. Clean the engine and the entire mower thoroughly.

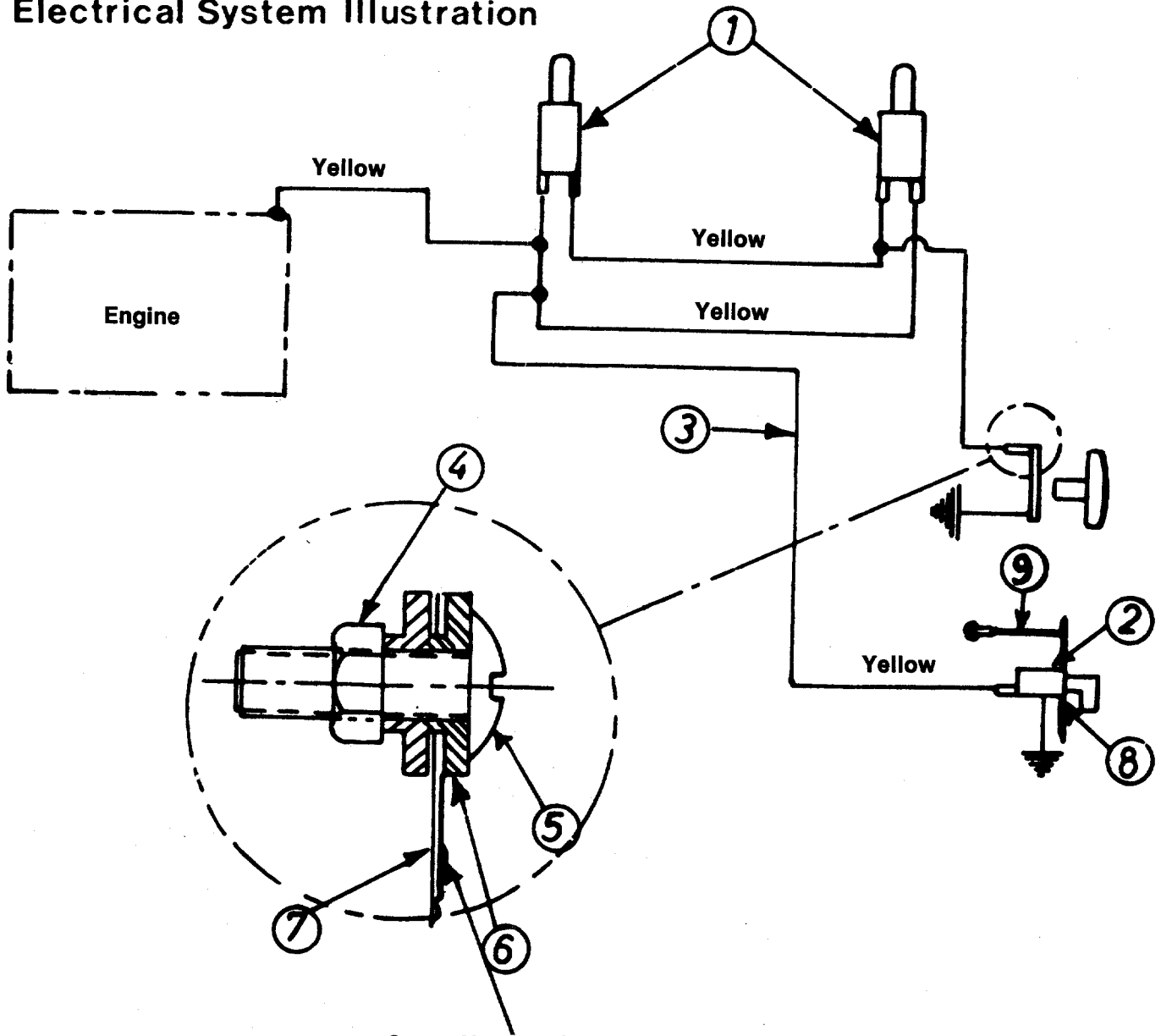
## TROUBLESHOOTING

Refer to the chart on page 12.

# Trouble Shooting Chart

Problem	Cause	Remedy
1 Engine fails to start	<ul style="list-style-type: none"> <li><b>A</b> Check fuel tank for gas</li> <li><b>B</b> Spark plug lead wire disconnected</li> <li><b>C</b> Throttle control lever not in the starting position</li> <li><b>D</b> Faulty spark plug</li> <li><b>E</b> Carburetor improperly adjusted Engine flooded</li> </ul>	<ul style="list-style-type: none"> <li><b>A</b> Fill tank if empty</li> <li><b>B</b> Connect lead wire</li> <li><b>C</b> Move throttle lever to start position.</li> <li><b>D</b> Spark should jump gap between control electrode and side electrode. If spark does not jump, replace the spark plug.</li> <li><b>E</b> Remove spark plug, dry the plug, crank engine with plug removed, and throttle in off position. Replace spark plug and lead wire and resume starting procedures.</li> </ul>
2 Hard starting or loss of power	<ul style="list-style-type: none"> <li><b>A</b> Spark plug wire loose</li> <li><b>B</b> Carburetor improperly adjusted</li> <li><b>C</b> Dirty air cleaner</li> </ul>	<ul style="list-style-type: none"> <li><b>A</b> Connect spark plug wire</li> <li><b>B</b> Adjust carburetor. See engine manual.</li> <li><b>C</b> Clean air cleaner as described in the Engine manual.</li> </ul>
3 Operation erratic	<ul style="list-style-type: none"> <li><b>A</b> Dirt in gas tank</li> <li><b>B</b> Dirty air cleaner</li> <li><b>C</b> Water in fuel supply</li> <li><b>D</b> Vent in gas cap plugged</li> <li><b>E</b> Carburetor improperly adjusted</li> </ul>	<ul style="list-style-type: none"> <li><b>A</b> Remove the dirt and fill tank with fresh gas</li> <li><b>B</b> Clean air cleaner as described in the engine manual.</li> <li><b>C</b> Drain contaminated fuel and fill tank with fresh gas.</li> <li><b>D</b> Clear vent or replace gas cap</li> <li><b>E</b> Adjust carburetor. See engine manual.</li> </ul>
4 Occasional skip (hesitates) at high speed	<ul style="list-style-type: none"> <li><b>A</b> Carburetor idle speed too slow</li> <li><b>B</b> Spark plug gap too close</li> <li><b>C</b> Carburetor idle mixture adjustment improperly set</li> </ul>	<ul style="list-style-type: none"> <li><b>A</b> Adjust carburetor. See engine manual.</li> <li><b>B</b> Adjust to .030"</li> <li><b>C</b> Adjust carburetor. See engine manual.</li> </ul>
5 Idles poorly	<ul style="list-style-type: none"> <li><b>A</b> Spark plug fouled, faulty, or gap too wide.</li> <li><b>B</b> Carburetor improperly adjusted</li> <li><b>C</b> Dirty air cleaner</li> </ul>	<ul style="list-style-type: none"> <li><b>A</b> Reset gap to .030" or replace spark plug</li> <li><b>B</b> Adjust carburetor. See engine manual.</li> <li><b>C</b> Clean air cleaner as described in the engine manual.</li> </ul>
6 Engine overheats	<ul style="list-style-type: none"> <li><b>A</b> Carburetor not adjusted properly</li> <li><b>B</b> Air flow restricted</li> <li><b>C</b> Engine oil level low</li> </ul>	<ul style="list-style-type: none"> <li><b>A</b> Adjust carburetor. See engine manual.</li> <li><b>B</b> Remove blower housing and clean as described in the engine manual.</li> <li><b>C</b> Fill crankcase with the proper oil</li> </ul>
7 Excessive vibration	<ul style="list-style-type: none"> <li><b>A</b> Cutter blade loose or unbalanced</li> </ul>	<ul style="list-style-type: none"> <li><b>A</b> Tighten blade and adapter.</li> </ul>

# Electrical System Illustration



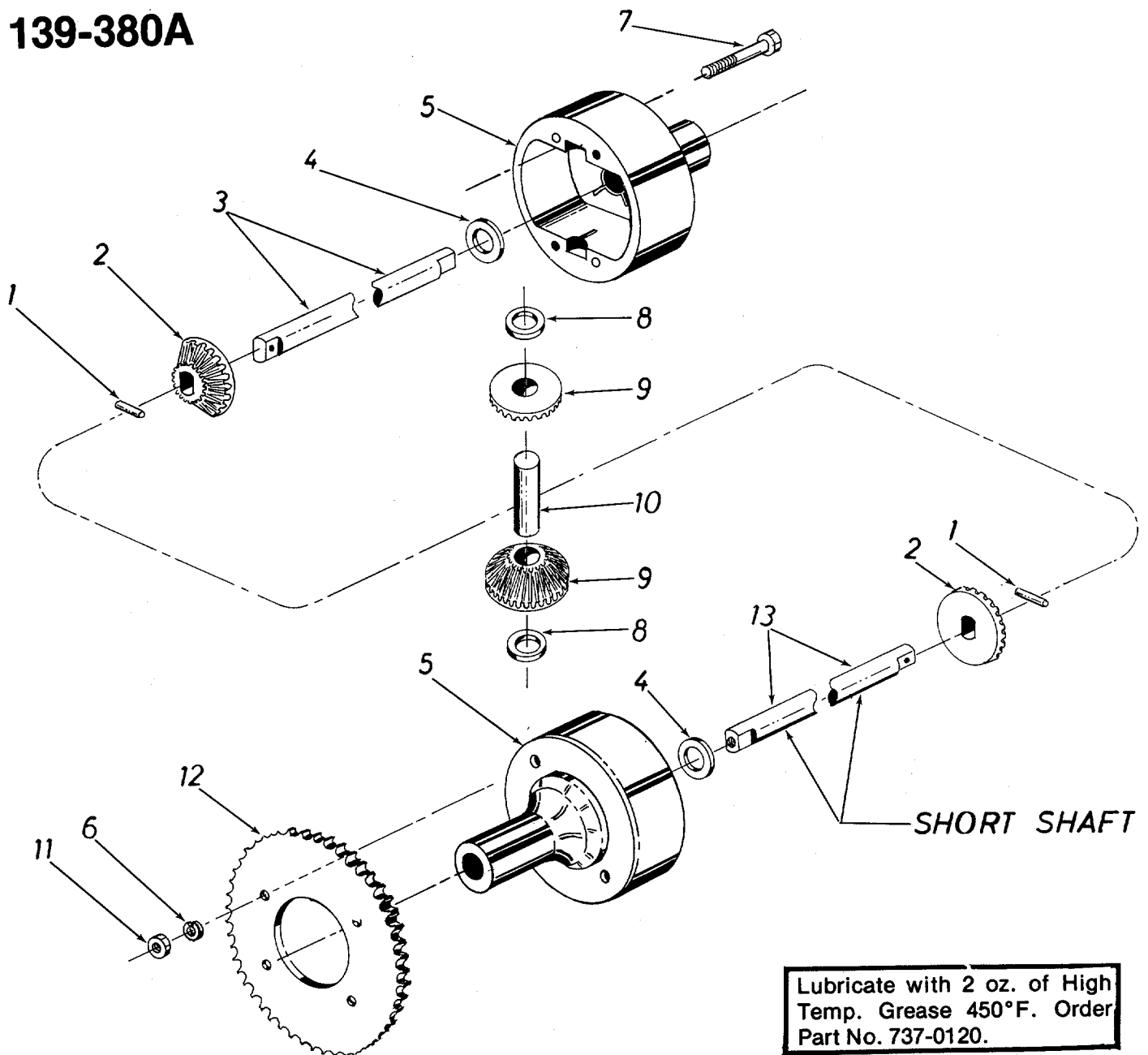
Screw Head on Spring Side w/Dimple

## PARTS LIST FOR SCHEMATIC MODEL 139-380A

REF. NO.	PART NO.	DESCRIPTION	NEW PART
1	725-0269	Safety Switch—Red (2 Req'd.)	
2	725-0464	Magneto Ignition Switch w/Nut	
	725-0201	Ignition Key	
3	725-0272	Wire Harness	
4	712-0121	Hex Nut #10-24	
5	710-0425	Truss Mach. Scr. #10-24 x .62	
6	736-0338	Fiber Washer (2 Req'd.)	
7	736-0257	Switch Spring	
8	736-0225	Internal Lockwasher 5/8 I.D.	
9	725-0297	Ground Wire	

\*For faster service obtain standard nuts, bolts and washers locally. If these items cannot be obtained locally, order by part number and size as shown on parts list.

# 139-380A

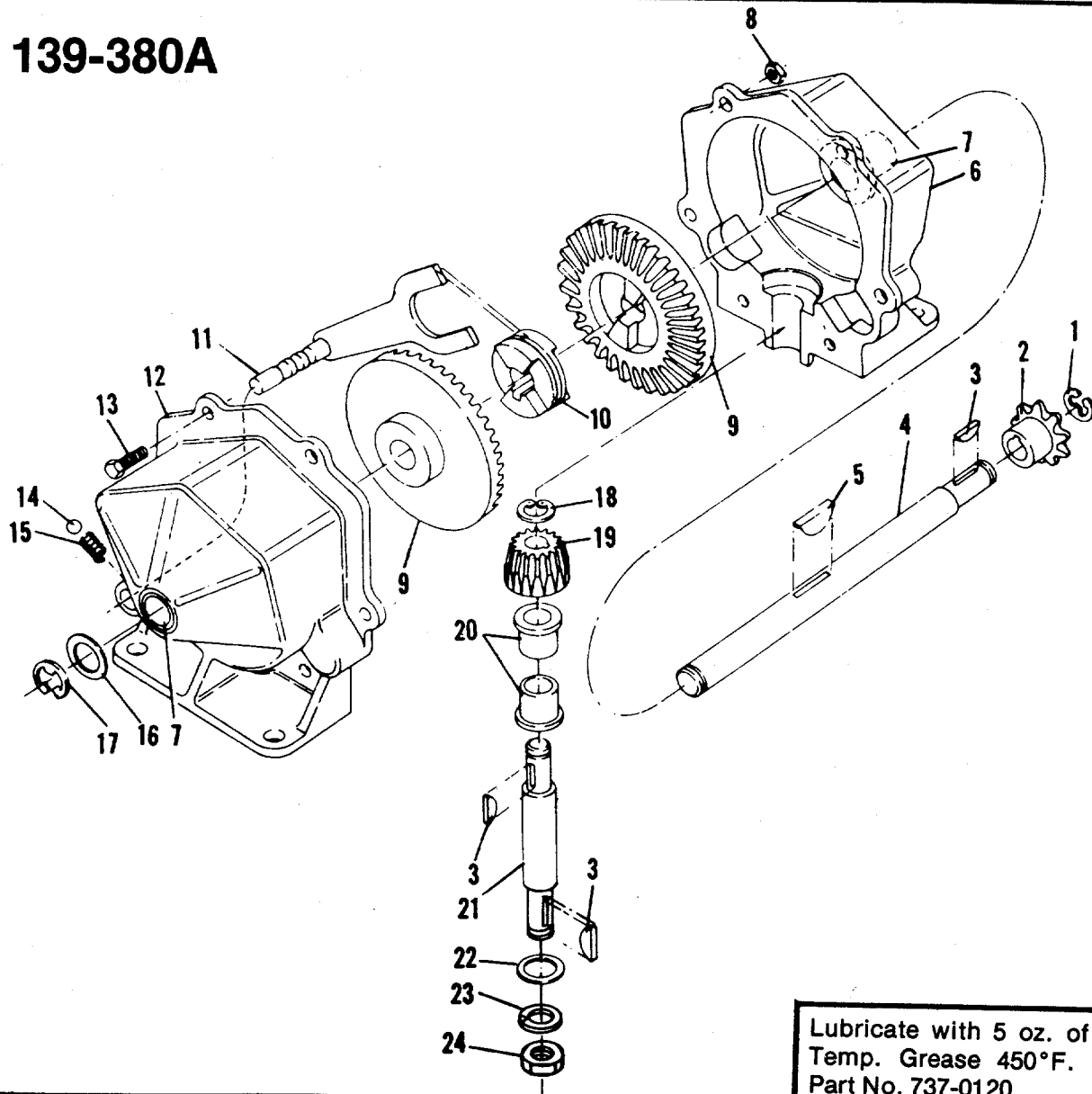


Lubricate with 2 oz. of High Temp. Grease 450°F. Order Part No. 737-0120.

## PARTS LIST FOR DIFFERENTIAL ASSEMBLY 717-0326

REF. NO.	PART NO.	QTY REQ'D	DESCRIPTION	NEW PART
1	715-0247	2	Spring Pin Spir. 3/16" Dia. x 1.00" Lg.	
2	748-0185	2	Gear—Double "D" Hole	
3	738-0302	1	Shaft—Long 15.11" Lg.	
4	736-0188	2	Fl-Wash. .760 I.D. x 1.49 O.D.	
5	717-0341	2	Housing Half	
6	736-0119	2	L-Wash. 5/16" Scr. *	
7	710-0363	2	Hex Scr. 5/16-24 x 4.00" Lg. *	
8	736-0187	2	Fl-Wash. .640 I.D. x 1.24 O.D.	
9	748-0158	2	Gear—Round Hole	
10	711-0276	1	Drive Pin	
11	712-0237	2	Hex Cent. L-Nut 5/16-24 Thd.	
12	09054	1	Sprocket—40 Tooth	
13	738-0303	1	Shaft—Short 7.58" Lg.	

# 139-380A



Lubricate with 5 oz. of High Temp. Grease 450°F. Order Part No. 737-0120.

## SINGLE SPEED TRANSMISSION PART NO. 717-0223

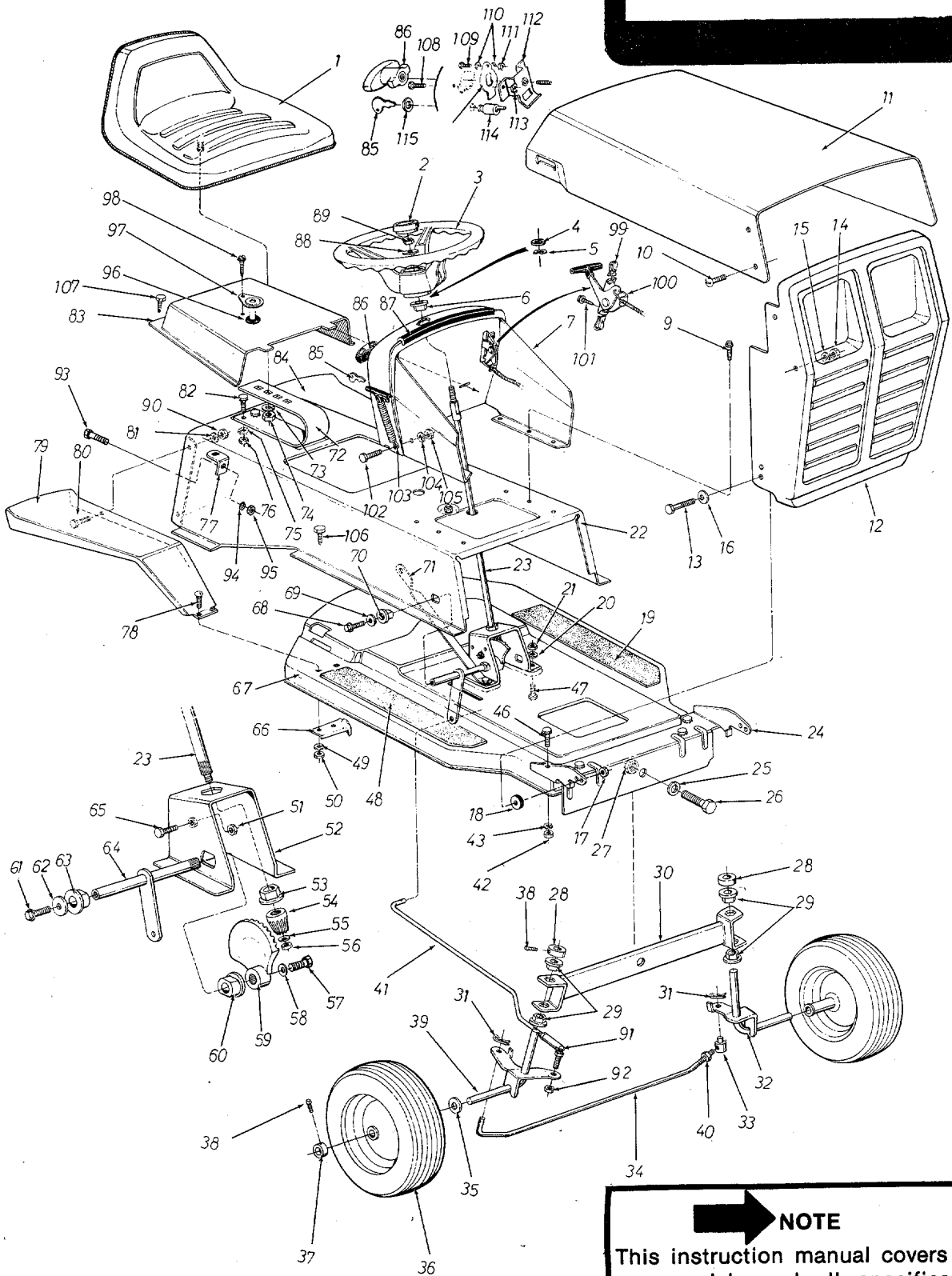
### PARTS LIST FOR SINGLE SPEED TRANSMISSION PART NO. 717-0223

REF. NO.	PART NO.	COLOR CODE	DESCRIPTION	NEW PART	REF. NO.	PART NO.	COLOR CODE	DESCRIPTION	NEW PART
1	716-0104		Snap Ring		13	710-0195		Hex Hd. Cap Scr. 1/4-28 x .62*	
2	748-0852		Sprocket 8T #41		14	741-0862		Detent Ball	
3	714-0129		Key Hi-Pro #4		15	732-0863		Detent Spring	
4	711-0854		Shaft Output		16	736-0116		Washer	
5	714-0126		Key Hi-Pro #606 (Hardened)		17	716-0106		E-ring	
6	717-0123		Housing Half		18	716-0865		Snap Ring #3100-50	
7	748-0855		Bearing		19	748-0866		Bevel Pinion	
8	712-0117		Locknut 1/4-28 Thd.*		20	748-0867		Bearing	
9	748-0856		Bevel Gear		21	738-0159		Pinion Shaft	
10	748-0857		Clutch Collar		22	736-0192		Washer	
11	08583		Detent Shaft Ass'y.		23	736-0921		Lockwasher 1/2"	
12	717-0124		Housing Half w/ Detent Hole		24	712-0922		Hex Jam Nut 1/2-20 Thd.*	

\*For faster service obtain standard nuts, bolts and washers locally. If these items cannot be obtained locally, order by part number and size as shown on parts list.

# 139-380A

IF YOU WRITE TO US ABOUT THIS ARTICLE  
OR IF YOU ORDER REPLACEMENT PARTS AL-  
WAYS MENTION THIS MODEL & SERIAL NO  
MODEL



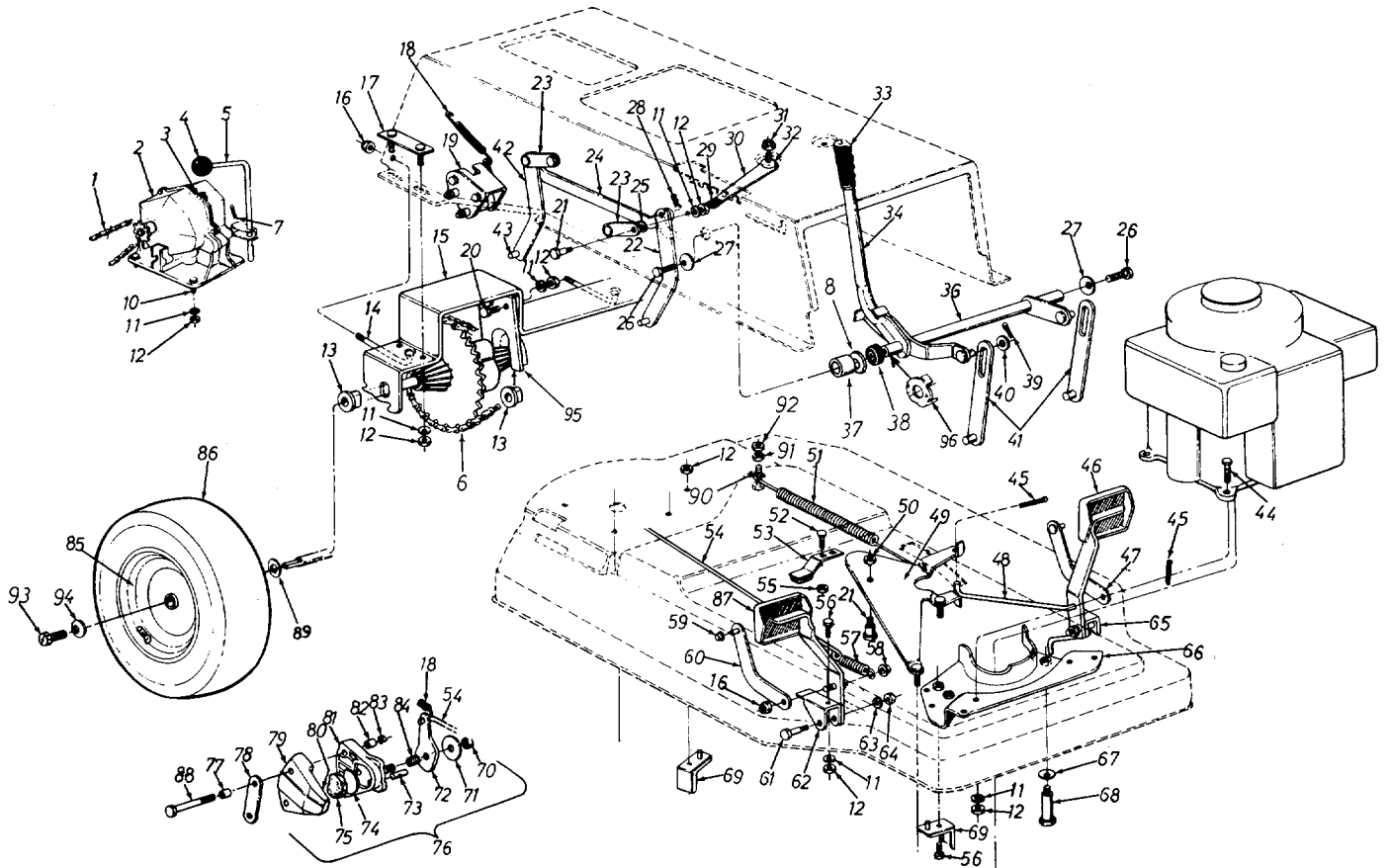
**NOTE**  
This instruction manual covers vari-  
ous models and all specifications  
shown do not necessarily apply to  
your model. Specifications subject to  
change without notice or obligation.



PARTS LIST FOR MODEL 139-380A

REF. NO.	PART NO.	COLOR CODE	DESCRIPTION	NEW PART	REF. NO.	PART NO.	COLOR CODE	DESCRIPTION	NEW PART
1	757-0264		Seat Assembly		63	741-0199		Plastic Flanged Brg.	
2	731-0220		Cap for Steering Wheel		64	12749		Steering Arm Shaft Ass'y.	
3	731-0219		12" Dia. Steering Wheel		65	710-0670		Hex Scr. Nylon 3/8-16 x 1.25"	
4	736-0156		FI-Wash. .635 I.D x 1.120		66	11055		Transmission Belt Guard	
5	736-0174		Wave Wash. .66 I.D x .88		67	13879	-462	Lower Frame	N
6	748-0227		Hex Flange Brg. .630 I.D.		68	710-0325		Hex Scr. 3/8-24 x .50" Lg. *	
7	12740		Dash Panel Ass'y.—Recoil		69	736-0105		Belleville Wash.	
9	710-0198		Hex Sems Scr. 5/16-18 x .75		70	741-0199		Plastic Flanged Brg.	
10	710-0255		Truss Mach. Scr. 1/4-20 x .75"		71	12800		Transmission Support Brkt.	
11	11836	-462	Hood		72	732-0256		Seat Spring 3.25 High	
12	13794	-462	Grille	N	73	736-0921		L-Wash. 1/2" Scr. *	
13	738-0145		Shld. Scr. 498 Dia. x .835" Lg.		74	712-0206		Hex Nut 1/2-13 Thd. *	
14	712-0287		Hex Nut 1/4-20 Thd. *		75	736-0119		L-Wash. 5/16" Scr. *	
15	736-0329		L.-Wash. 1/4" Scr. *		76	712-0267		Hex Nut 5/16-18 Thd. *	
16	736-0253		Belleville Wash.		77	09963	-462	Hitch Bracket	
17	712-0375		Hex Cent. L.-Nut 3/8-16 Thd.		78	710-0255		Truss Mach. Scr. 1/4-20 x .75"	
18	735-0197		Rubber Wash. 1.12 O.D x .75	N					
19	723-0305		Foot Mat—L.H.		79	11002	-462	Rear Fender	
20	736-0119		L-Wash. 5/16" Scr. *		80	710-0195		Hex Scr. 1/4-28 x .62" Lg. *	
21	712-0267		Hex Nut 5/16-18 Thd. *		81	736-0329		L-Wash. 1/4" Scr. *	
22	13880	-462	Upper Frame	N	82	710-0322		Hex Sems Scr. 5/16-18 x 1.00"	
23	738-0307		Steering Shaft						
24	12746	-462	Front Pivot Bracket		83	12804		Transmission Panel	
25	736-0158		L-Wash. 5/8" Scr. *		84	11002	-462	Rear Fender	
26	710-0312		Hex Scr. 5/8-18 x 1.31 Spec.		85	725-0201		Ignition Key Only	
27	712-0923		Hex Cent. Jam Nut 5/8-18			725-0464		Ignition Switch (Not Shown)	
28	711-0169		Collar for a 5/8" Dia.		86	11263		Plastic Handle	
29	748-0227		Hex Flange Brg. .630 I.D.		87	731-0144		Vinyl Strip	
30	13274	-462	Pivot Bar Ass'y.		88	736-0242		Belleville Wash. .345 I.D.	
31	714-0115		Cotter Pin 1/8" Dia. x 1.00"		89	712-0158		Hex Cent. L-Nut 5/16-18 Thd.	
32	12752	-462	Axle Ass'y.—Front—L.H.		90	712-0138		Hex Nut 1/4-28 Thd. *	
33	711-0198		Ferrule		91	723-0156		Ball Joint Ass'y. 3/8-24 Thd.	
34	747-0144		Tie Rod		92	712-0116		Hex Ins. L-Nut 3/8-24 Thd.	
35	736-0156		FI-Wash. .635 I.D. x 1.120		93	710-0216		Hex Scr. 3/8-16 x .75" Lg. *	
36	734-0510		Front Wheel Ass'y.—Comp. 10.25 x 3.25		94	736-0119		L-Wash. 3/8" Scr. *	
37	711-0169		Collar 5/8" I.D.		95	712-0798		Hex Nut 3/8-16 Thd. *	
38	710-0666		Sq. Hd. Set Scr. 5/16-18 x .375"		96	731-0309		Nylon Bushing	
					97	12653		Bushing Cap	
39	12755	-462	Axle Ass'y.—Front—R.H.		98	710-0351		Truss Mach. B-Tap. Scr. #10 x .50" Lg.	
40	712-0711		Hex Jam Nut 3/8-24 Thd.		99	712-0344		Speed Nut #10	
41	711-0625		Steering Rod		100	746-0273		Throttle Control Ass'y.	
42	712-0267		Hex Nut 5/16-18 Thd. *		101	710-0351		Truss Mach. B-Tap. Scr. #10 x .50" Lg.	
43	736-0119		L-Wash. 5/16" Scr. *						
46	710-0198		Hex Sems Scr. 5/16-18 x .75"		102	710-0289		Hex Scr. 1/4-20 x .50" Lg. *	
47	710-0198		Hex Sems Scr. 5/16-18 x .75"		103	723-0296		Hood Lock Ass'y.	
48	723-0304		Foot Mat—R.H.		104	736-0329		L-Wash. 1/4" Scr. *	
49	736-0329		L-Wash. 1/4" Scr. *		105	712-0287		Hex Nut 1/4-20 Thd. *	
50	712-0287		Hex Nut 1/4-20 Thd. *		106	710-0451		Carr. Bolt 5/16-18 x .75	
51	712-0375		Hex Cent. L-Nut 3/8-16 Thd.		107	710-0599		Hex Wash. SF-Tapp Scr. 1/4-20 x .50	
52	12850		Steering Gear Support Ass'y.						
53	748-0228		Hex Flange Brg. .505 I.D.		108	710-0351		Truss Mach. B-Tapp. Scr. #10 x .50" Lg. *	
54	748-0237		Pinion Gear						
55	736-0242		Belleville Wash.	109	710-0425		Truss Mach. Scr. #10-24 x .62" Lg. *		
56	712-0237		Hex Cent. L-Nut 5/16-24 Thd.						
57	710-0180		Hex Scr. 3/8-24 x .75" Lg. *		110	736-0338		Fiber Wash.	
58	736-0105		Belleville Wash.		111	712-0121		Hex Nut #10-24 Thd.	
59	748-0236		Bevel Gear		112	11053		Switch Brkt. Ass'y.	
60	741-0199		Plastic Flanged Brg.		113	712-0334		Speed Nut #10Z	
61	710-0325		Hex Scr. 3/8-24 x .50" Lg. *		114	725-0464		Ignition Switch	
62	736-0105		Belleville Wash.		115	736-0225		Int. L-Wash. 5/8" I.D.	

# 139-380A



**NOTE:** If for any reason, disc brake is disassembled, be sure round end of push pins (Ref. No. 73) is toward the cam lever (Ref. No. 72).

**PARTS LIST FOR MODEL 139-380A**

REF. NO.	PART NO.	COLOR CODE	DESCRIPTION	NEW PART	REF. NO.	PART NO.	COLOR CODE	DESCRIPTION	NEW PART
1	713-0161		#41 Chain 1/2" x 73 Links		52	710-0134		Carriage Bolt 1/4-20 x .62"*	
	713-0723		#41 Master Link 1/2" Pitch		53	761-0148		Blade Brkt. Ass'y.	
2	717-0222		Single Spd. Trans. Ass'y.—		54	747-0107		Brk. Rod .25 Dia. x 24.12" Lg.	
3	710-0412		Hex Hd. Cap Scr. 1/4-28 x .75"*		55	712-0287		Hex Nut 1/4-20 Thd.*	
4	720-0165		Ball Knob		56	710-0259		Hex Sems Scr. 5/16-18 x .62"*	
5	11080		Trans. Shift Lever Ass'y.		57	732-0245		Brake Spring	
6	713-0161		#41 Chain 1/2 Pitch x 73 Links		58	726-0100		Push Nut Dia. Rod	
7	714-0474		Cotter Pin 1/8" Dia. x .75"*		59	726-0121		Push Cap .25 Dia.	
8	736-0237		Fl.-Wash.		60	11056		Parking Brake—Lever Ass'y. R.H.	
10	710-0322		Hex Sems Cap Scr. 5/16-18 x 1"*		61	738-0213		Shld. Bolt .498 Dia. x 1.45	
11	736-0119		L-Wash. 5/16" Scr.*		62	11039		Pedal "U" Brkt. Ass'y.	
12	712-0267		Hex Nut 5/16-18 Thd.*		63	736-0169		L-Wash. 3/8" Scr.*	
13	741-0199		Fl-Brg. with Flats .753" I.D.		64	712-0798		Hex Nut 3/8-16 Thd.*	
14	710-0437		Chain Adj. Link 5/16-18 Thd.		65	11755		Pedal U Brkt. L.H. Ass'y	
15	11009		Rear Axle Brkt.		66	12654		Engine Belt Guard Ass'y.	
16	712-0429		Hex Ins. L-Nut 5/16-18 Thd.		67	736-0105		Belleville Wash.	
17	10360		Axle Bolt Plate Ass'y.		68	738-0215		Shld. Scr. 3.00"	
18	732-0157		Spring .380 O.D. x 3.25 (Brake Return)		69	12160		Belt Keeper Ass'y.	
19	11011		Disc Brake Brkt. Ass'y.		70	712-0134		Hex Top L-Nut 5/16-24 Thd.	
20	710-0198		Hex Sems Scr. 5/16-18 x .75"*		71	HH-03-03032		Wash. .349" I.D. x 1.004 O.D.	
21	738-0140		Shld. Scr. .431 Dia. x .18" Lg.		72	HH-18-03493		Cam Lever	
22	11023		Deck Link Ass'y. (3 Req'd.)		73	HH-05-03034		Push Pin .309 Dia. .857" Lg.	
23	09721		Pivot Link Ass'y.		74	HH-0303303		Backup Wash. 1.115" Dia. x .018 Thk. (D-Shaped)	
24	11014		Connecting Lift Brkt.		75	HH-15-02124		Friction Pad 1.110" Dia. x .472 Thk. (Cam Side D-Shaped)	
25	736-0159		Fl-Wash. .344 I.D. x .875 O.D.		76	761-0130		Disc Brake Ass'y.—Comp.	
26	710-0201		Hex Hd. Cap Scr. 3/8-16 x .62"*		77	761-0133		Spacer for Disc Brake	
27	736-0133		Fl.-Wash. .400 I.D. x 1.25 O.D. 1.13 O.D.		78	11010		Blade Plate	
28	714-0101		Int. Cotter Pin 1/2" Dia.		79	HH-12-03293		Casting Carrier Side	
29	11249		Ht. Adj. Knob		80	HH-15-03149		Friction Pad 1.110" Dia. x .245 Thk. (Carrier Side D-Shaped)	
30	11027		Handle Stop Brkt. Ass'y.		81	HH-12-03292		Casting Cam Side	
31	712-0429		Hex Ins. L-Nut 5/16-18 Thd.		82	761-0133		Spacer for Disc Brk.	
32	735-0126		Rubber Wash. .33 I.D. x .87		83	712-0158		Hex Cent. L-Nut 5/16-18 Thd.	
33	720-0157		Grip Finger—Black		84	HH-06-03031		Sprg.—Compres. .350" Dia.	
34	749-0212		Lift Handle—R.H.	N	85	734-0517		Rear Wheel Rim Ass'y.	
36	13630		Lift Handle Brkt. Ass'y.	N		734-0298		Rear Wheel Tire Only 13.0 x 5.0	
37	750-0273		Spacer 5/8 I.D. x 7/8 O.D.	N	86	734-0523		Rear Wheel Ass'y.—Comp.	
38	735-0195		Rubber Wash.		87	11036		Brake Pedal Ass'y.	
39	714-0115		Cotter Pin 1/8" Dia. x 1.00"*			12378		Pedal Pan—Vinyl	
40	736-0192		Fl-Wash. .531 I.D. x .93 O.D.		88	710-0176		Hex Hd. Cap Scr. 5/16-18 x 2.75" Lg.	
41	13851		Lockout Link Ass'y.	N	89	736-0134		Fl-Wash.	
42	11024		Deck Link		90	710-0606		Hex Scr. 1/4-20 x 1.50" Lg.*	
43	711-0332		Left Brkt. Pin		91	712-0107		Hex Cent. L-Nut 1/4-20 Thd.	
44	710-0442		Hex Hd. Cap Scr. 5/16-18 x 1.50" Lg.*		92	712-0287		Hex Nut 1/4-20 Thd.*	
45	714-0115		Cotter Pin 1/8" Dia. x 1.00"*		93	710-0627		Screw w/Lock 5/16-24 x .75"	
46	11037		Clutch Pedal Ass'y.		94	736-0242		Belleville Wash.	
	12379		Pedal Pad—Vinyl		95	10364		Rear Axle Plate	
47	11057		Parking Brake—Lever Ass'y. L.H.		96	11029		Handle Pivot Brkt.	
48	11061		Clutch Rod						
49	12446 —462		Idler Brkt. Ass'y.						
50	712-0116		Hex Ins. L-Nut 3/8-24 Thd.						
51	732-0191		Sprg. (Idler) .75 O.D. x 11.0"						

\*For faster service obtain standard nuts, bolts and washers locally. If these items cannot be obtained locally, order by part number and size as shown on parts list.

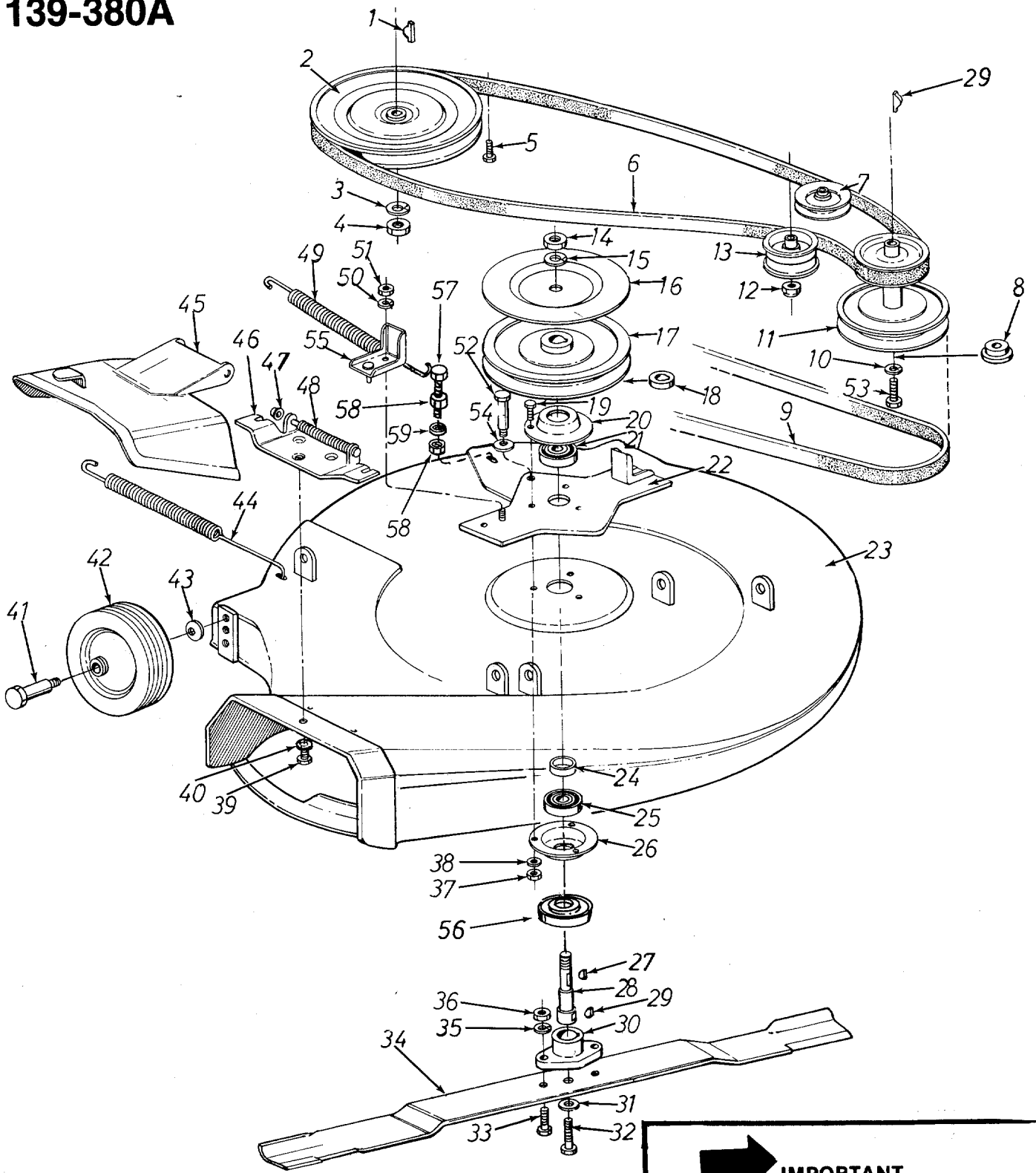
(462—Red Flake)

When ordering parts, if color or finish is important use the appropriate color code shown above (e.g. Red Flake—11904 (462).)

NOTE: The engine is not under warranty by the mower manufacturer . . . If repairs or service is needed on the engine, please contact your nearest authorized engine service outlet. Check the "Yellow Pages" of your telephone book under "Engines—Gasoline."



# 139-380A



**▶ IMPORTANT**  
Belts listed by Part Number are of special construction and should be used when replacement is necessary. The dimensions and description given are for general reference only and belts purchased by description and dimension generally will only provide temporary service.

**PARTS LIST FOR MODEL 139-380A**

REF. NO.	PART NO.	COLOR CODE	DESCRIPTION	NEW PART	REF. NO.	PART NO.	COLOR CODE	DESCRIPTION	NEW PART
1	714-0129		#4 Hi-Pro Key 3/32 x 5/8" Dia.		28	711-0405		Spindle	
2	756-0174		Trans. Split Pulley .50 I.D.		29	714-0365		#6 Hi-Pro Key 5/32 x 5/8" Dia.	
3	736-0921		L-Wash. 1/2" Scr. *		30	10769		Blade Adapter Kit	
4	712-0922		Hex Jam Nut 1/2-20 Thd.		31	736-0217		L-Wash. 3/8" Scr. H.D.	
5	710-0259		Hex Sems Scr. 5/16-18 x .62" Lg. *		32	710-0459		Hex Hd. Cap Scr. 3/8-24 x 1.50" Lg. H.T.	
6	754-0198		"V" Belt 1/2 x 62" Lg. (Drive Belt)		33	710-0117		Hex Hd. Cap Scr. 5/16-24 x 1.00" Lg. H.T.	
7	756-0116		"V" Idler 3.06 O.D.		34	742-0147		26 Inch Blade	
8	711-0572		Step Wash. for Engine Pulley		35	736-0119		L-Wash. 5/16" Scr.	
9	754-0138		"V" Belt 21/32 x .50" Lg. (Blade Belt)		36	712-0123		Hex Nut 5/16-24 Thd. *	
10	736-0217		L-Wash. 3/8" Scr. H.D.		37	712-0267		Hex Nut 5/16-18 Thd. *	
11	756-0246		Two-Step Engine Pulley		38	736-0119		L-Wash. 5/16" Scr.	
12	712-0116		Hex Ins. L-Nut 3/8-24 Thd.		39	710-0195		Hex Hd. Cap Scr. 1/4-28 x .62" Lg. (3 Req'd.)	
13	756-0217		Flat Idler 2.75 O.D. w/ Flanges		40	736-0329		L-Wash 1/4" Scr. *	
14	712-0261		Hex Jam Nut 5/8-11 Thd.		41	738-0119		Axle Bolt .625 Dia. 1.75	
15	736-0158		Sprg. L-Wash. 5/8" Scr. *		42	734-0796		Wheel Ass'y. Comp. 5.0" Dia.	
16	11073		Blade Brake Disc		43	736-0105		Belleville Wash.	
17	756-0143		Deck Split Pulley .63 I.D.		44	732-0153		Deck Spring	
18	748-0168		Spacer		45	11571		Chute Cover Ass'y.	
19	710-0322		Hex Sems Cap Scr. 5/16-18 x 1.00 Lg. * (3 Req'd.)		46	11399		Adapter Plate Ass'y.	
20	741-0163		Housing—Brg. Ass'y.		47	726-0106		Push Nut 1/4" Rod	
21	741-0919		Ball Brg. .787 I.D. x 1.85 O.D.		48	732-0261		Torsion Spring	
22	11541		Belt Guard Ass'y.		49	732-0153		Deck Spring	
23	11083		25 Inch Deck Ass'y.		50	736-0119		L-Wash. 5/16" Scr. *	
24	750-0142		Spacer .836 I.D. x 1.01 O.D. x .320 Thk.		51	712-0267		Hex Nut 5/16-18 Thd. *	
25	741-0919		Ball Brg. .787 I.D. x 1.85 O.D.		52	738-0129		Shld. Scr. .498" Dia. x 2.00	
26	741-0163		Housing—Brg. Ass'y. w/ Brg.		53	710-0151		Hex Hd. Cap Scr. 3/8-24 x 2.00" Lg.	
	08253		Brg. Housing (only)		54	736-0242		Belleville Wash.	
27	714-0388		#61 Hi-Pro Key 3/16 x 5/8" Dia.		55	10426		Belt Keeper Ass'y.	
					56	13703		Bearing Shield	
						11910		26.0" Deck Ass'y. Comp. (Service only)	
					57	710-0442		Hex Scr. 5/16-18 x 1.50" Lg.	
					58	712-0267		Hex Nut 5/16-18 Thd. *	
					59	736-0119		L.-Wash. 5/16" Scr. *	

\*For faster service obtain standard nuts, bolts and washers locally. If these items cannot be obtained locally, order by part number and size as shown on parts list.

(462—Red Flake) When ordering parts if color or finish is important, use color code shown at left. (e.g. Red Flake Finish—11001 (462).)

The engine is not under warranty by the mower manufacturer. If repairs or service is needed on the engine, please contact your nearest authorized engine service outlet. Check the "Yellow Pages" of your telephone book under "Engines — Gasoline."



**WHEEL CHART**

**FRONT WHEEL**

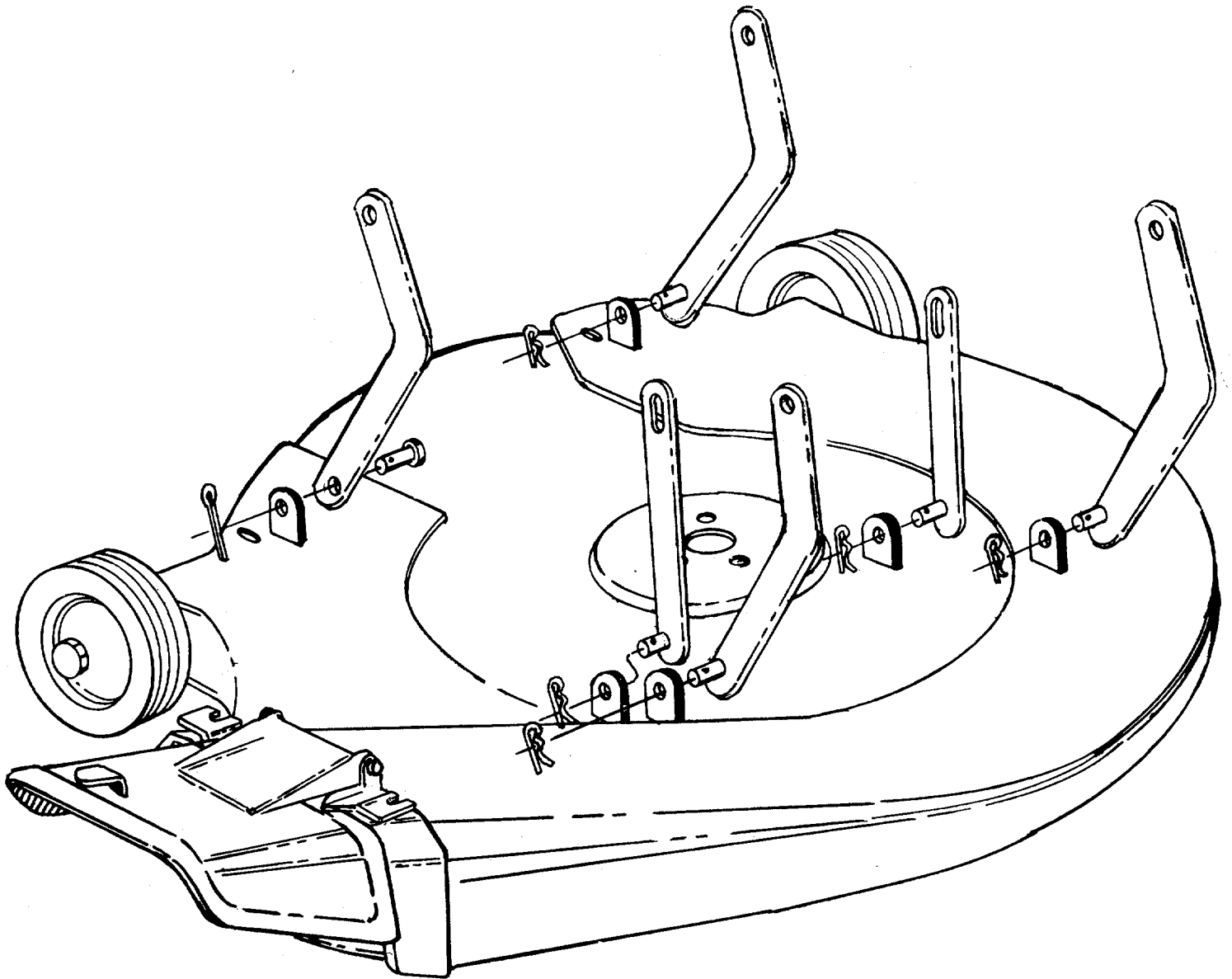
**REAR WHEEL**

Part No.	Description	Part No.	Description
734-0510 748-0146	Wheel Ass'y. Comp. 10.25 x 3.25 Flange Brg. w/ Flats .630" I.D.	734-0523 734-0517 734-0298 734-0255 734-0249	Wheel Ass'y. Comp. 13.00 x 5.00-6 Rim Ass'y. with Hub Tire Only Tubeless 13.00 x 5.00-6 Air Valve Inner Tube (Service Only)

# DECK LINKAGE



Refer to illustration below for proper deck link hook-up. If the deck is removed for any reason use the illustration below for correct assembly.



# PARTS INFORMATION

## POWER EQUIPMENT PARTS AND SERVICE

Parts and service for all MTD manufactured power equipment are available through the authorized service firms listed below. All orders should specify the model number of your unit, parts number, description of parts and the quantity of each part required.

<b>ALABAMA</b>	<b>BIRMINGHAM</b>	
Auto Electric & Carburetor Co. ....	2625 4th Ave. S. ....	35233
<b>ARKANSAS</b>	<b>NORTH LITTLE ROCK</b>	
Sutton's Lawn Mower Shop .....	Rt. 4 Box 368 .....	72117
	<b>FORT SMITH</b>	
Mity Mite Motors, Inc. ....	2515 Towson Ave. ....	72901
<b>CALIFORNIA</b>	<b>PORTERVILLE</b>	
Billious .....	75 North D Street .....	93257
	<b>SAN BERNARDINO</b>	
Lawn Mower Supply Co. ....	25608 E. Baseline .....	92410
	<b>SAN FRANCISCO</b>	
J.W. Jewett Co. ....	981 Folsom St. ....	94107
	<b>SACRAMENTO</b>	
Luttig & Severson .....	2030 28th St. ....	95818
<b>COLORADO</b>	<b>DENVER</b>	
South Denver Lawn Equip. ....	527 West Evans .....	80223
<b>FLORIDA</b>	<b>JACKSONVILLE</b>	
Radco Distributors .....	2403 Market St. ....	32206
	<b>CORAL GABLES</b>	
Moz-All of Florida, Inc. ....	365 Greco Ave. ....	33146
<b>GEORGIA</b>	<b>EAST POINT</b>	
East Point Cycle & Key .....	2834 Church St. ....	30344
<b>ILLINOIS</b>	<b>LYONS</b>	
Keen Edge Co. ....	8615 Ogden Ave. ....	60534
<b>INDIANA</b>	<b>ELKHART</b>	
Parts & Sales Inc. ....	2101 Industrial Pkwy. ....	46514
<b>IOWA</b>	<b>DUBUQUE</b>	
Power Lawn & Garden Equip. ....	2551 J.F. Kennedy ...	52001
<b>LOUISIANA</b>	<b>NEW ORLEANS</b>	
Suhren Engine Co. ....	8330 Earhart Blvd. ...	70118
<b>MARYLAND</b>	<b>TAKOMA PARK</b>	
Center Supply Co. ....	6867 New Hampshire Ave. ....	20012
<b>MASSACHUSETTS</b>	<b>SPRINGFIELD</b>	
Morton B. Collins Co. ....	300 Birnie Ave. ....	01107
<b>MICHIGAN</b>	<b>MOUNT CLEMENS</b>	
Power Equipment Dist. ....	36463 South Gratiot ..	48043
	<b>LANSING</b>	
Lorenz Service Co. ....	2500 S. Pennsylvania ..	48900
<b>MINNESOTA</b>	<b>MINNETONKA</b>	
Hance Distributing Inc. ....	11212 Wayzata Blvd. ...	55343
	<b>ST. PAUL</b>	
Power Tools Inc. ....	3771 Sibley Memorial Hwy. ....	55122
<b>MISSISSIPPI</b>	<b>BILOXI</b>	
Biloxi Sales & Service, Inc. ....	506 Caillavet St. ....	39533
<b>MISSOURI</b>	<b>KANSAS CITY</b>	
Automotive Equip. Service .....	3117 Holmes St. ....	64109
	<b>ST. JOSEPH</b>	
Ross-Frazier Supply Co. ....	8th and Monterey ...	64503
	<b>ST. LOUIS</b>	
Henzler, Inc. ....	2015 Lemay Ferry Rd. ....	63125
<b>NEW JERSEY</b>	<b>BELLMAWR</b>	
Lawnmower Parts Inc. ....	717 Creek Rd., P.O. Box 7. ....	08030
	<b>RUTHERFORD</b>	
Feld Distributor .....	28 Glen Rd. ....	07070
<b>NEW YORK</b>	<b>CARTHAGE</b>	
Gamble Dist., Inc. ....	West End Ave. ....	13619

## BRIGGS AND STRATTON, TECUMSEH AND PEERLESS PARTS AND SERVICE

Briggs & Stratton, Tecumseh and Peerless parts and service should be handled by your nearest authorized engine service firm. Check the yellow pages of your telephone directory under the listing **Engines—Gasoline**, Briggs & Stratton or Tecumseh Lauson.

	<b>SYRACUSE</b>	
GTP Leisure Products Inc. ....	420 Marcellus St. ....	13204
<b>NORTH CAROLINA</b>	<b>GREENSBORO</b>	
Dixie Sales Company .....	327 Battleground Ave. ....	27402
	<b>GOLDSBORO</b>	
Smith Hardware Co. ....	515 N. George St. ....	27530
<b>OHIO</b>	<b>WADSWORTH</b>	
National Central .....	687 Seville Rd. ....	44281
	<b>CLEVELAND</b>	
Bleckrie, Inc. ....	7900 Lorain Ave. ....	44102
	<b>CARROLL</b>	
Stebe's Mid-State Mower Supply. ....	Box 366-71 High St. ...	43112
	<b>YOUNGSTOWN</b>	
Burton Supply Co. ....	1301 Logan Ave. Box 929 .	44501
<b>OKLAHOMA</b>	<b>MUSKOGEE</b>	
Victory Motors, Inc. ....	605 S. Cherokee. ....	74401
	<b>OKLAHOMA CITY</b>	
Forest Sales Inc. ....	1039 NW 63rd St. ....	73116
	<b>ADA</b>	
Ada Auto Supply .....	301 E. 12th St. ....	74820
<b>OREGON</b>	<b>PORTLAND</b>	
Kenton Supply Co. ....	8216 N. Denver Ave. ...	97217
<b>PENNSYLVANIA</b>	<b>CHESTER</b>	
Stull Equipment Corp. ....	742 W. Front St. ....	19013
	<b>HARRISBURG</b>	
EECO Inc. ....	4021 N. 6th St. ....	17110
	<b>PHILADELPHIA</b>	
Thompson Rubber Co. ....	5222-24 N Fifth St. ...	19120
	<b>PITTSBURGH</b>	
Bluemont Co. ....	11125 Frankstown Rd. ....	15235
<b>TENNESSEE</b>	<b>KNOXVILLE</b>	
Master Repair Service .....	2423 Broadway, N.E. ...	37917
	<b>MEMPHIS</b>	
Memphis Cycle & Supply Co. ....	421 Monroe Ave. ....	38107
American Sales & Service, Inc. ....	1922 Lynnbrook .....	38116
<b>TEXAS</b>	<b>DALLAS</b>	
Marr Brothers, Inc. ....	423 E. Jefferson. ....	75203
	<b>HOUSTON</b>	
Bullard Supply Co. ....	2409 Commerce St. ....	77003
	<b>SAN ANTONIO</b>	
Catto & Putty, Inc. ....	P.O. Box 2408 .....	78206
	<b>FORT WORTH</b>	
Woodson Sales Corp. ....	1702 N. Sylvania .....	76111
<b>UTAH</b>	<b>SALT LAKE CITY</b>	
A-1 Engine & Mower Co. ....	437 E. 9th St. ....	84111
<b>VERMONT</b>	<b>BURLINGTON</b>	
Vermont Hdwe. Co. Inc. ....	180 Flynn Ave. ....	05401
<b>VIRGINIA</b>	<b>RICHMOND</b>	
RBI Corp. ....	963 Myers St. ....	23260
<b>WASHINGTON</b>	<b>SEATTLE</b>	
Bailey's Inc. ....	1414 14th Ave. ....	98122
<b>WEST VIRGINIA</b>	<b>CHARLESTON</b>	
Young's, Inc. ....	233 Virginia St., E. ...	25301
<b>WISCONSIN</b>	<b>APPLETON</b>	
Automotive Supply Co. ....	123 S. Linwood Ave. ...	54911

### WARRANTY PARTS AND SERVICE POLICY

The purpose of warranty is to protect the customer from defects in workmanship and materials, defects which are NOT detected at the time of manufacture. It does not provide for the unlimited and unrestricted replacement of parts. Use and maintenance are the responsibility of the customer. The manufacturer cannot assume responsibility for conditions which it has no control. Simply put, if it's the manufacturer's fault, it's the manufacturer's responsibility; if it's the customer's fault, it's the customer's responsibility.

#### CLAIMS AGAINST THE MANUFACTURER'S WARRANTY INCLUDES

1. Replacement of Missing Parts on new equipment.
2. Replacement of Defective Parts within the warranty period.
3. Repair of Defects within the warranty period.

All claims MUST be substantiated with the following information:

1. Model Number of unit involved.
2. Date unit was purchased or first put into service.
3. Date of failure.
4. Nature of failure.