

Operating/Service Instructions

RIDING MOWER

IMPORTANT

SAFE OPERATION PRACTICES FOR RIDING VEHICLES

Model Nos.

133-380 25" CUT—RECOIL STARTER

133-385 25" CUT—ELECT. STARTER

133-390 30" CUT—RECOIL STARTER

133-395 30" CUT—ELECT. STARTER

1. Know the controls and how to stop quickly—**READ THE OWNER'S MANUAL.**
2. Do not allow children to operate vehicle. Do not allow adults to operate it without proper instruction.
3. Do not carry passengers. **Keep children and pets a safe distance away.**
4. Clear work area of objects which might be picked up and thrown.
5. Disengage all attachment clutches and shift into neutral before attempting to start engine (motor).
6. Disengage power to attachment(s) and stop engine (motor) before leaving operator position.
7. Disengage power to attachment(s) and stop engine (motor) before making any repairs or adjustments.
8. Disengage power to attachment(s) when transporting or not in use.
9. Take all possible precautions when leaving vehicle unattended such as disengaging power-take-off, lowering attachments, shifting into neutral, setting parking brake, stopping engine and removing key.
10. Do not stop or start suddenly when going uphill or downhill. Mow up and down face of steep slopes; never across the face.
11. Reduce speed on slopes and in sharp turns to prevent tipping or loss of control. Exercise extreme caution when changing direction on slopes.
12. Stay alert for holes in terrain and other hidden hazards.
13. Use care when pulling loads or using heavy equipment.
 - A. Use only approved drawbar hitch points.
 - B. Limit loads to those you can safely control.
 - C. Do not turn sharply. Use care when backing.
 - D. Use counterweight(s) or wheel weights when suggested in owner's manual.
14. Watch out for traffic when crossing or near roadways.
15. When using any attachments never direct discharge of material toward bystanders nor allow anyone near vehicle while in operation.
16. Handle gasoline with care—it is highly flammable.
 - A. Use approved gasoline container.
 - B. Never remove cap or add gasoline to a running or hot engine or fill fuel tank indoors. Wipe up spilled gasoline.
 - C. Open doors if engine is run in garage — exhaust fumes are dangerous. Do not run engine (motor) indoors.
17. Keep the vehicle and attachments in good operating condition, and keep safety devices in place. Use guards as instructed in owner's manual.
18. Keep all nuts, bolts, and screws tight to be sure the equipment is in safe working condition.
19. Never store the equipment with gasoline in the tank inside a building where fumes may reach an open flame or spark. Allow engine to cool before storing in any enclosure.
20. To reduce fire hazard keep engine free of grass, leaves or excessive grease.
21. The vehicle and attachments should be stopped and inspected for damage after striking a foreign object, and the damage should be repaired before restarting and operating the equipment.
22. Do not change the engine governor settings or overspeed the engine.
23. When using the vehicle with mower, proceed as follows:
 - (1) Mow only in daylight or in good artificial light.
 - (2) Never make a cutting height adjustment while engine (motor) is running if operator must dismount to do so.
 - (3) Shut engine (motor) off when removing grass catcher and/or unclogging chute.
 - (4) Check blade mounting bolts for proper tightness at frequent intervals.
24. Check grass catcher bags frequently for wear or deterioration. Replace with new bags for safety protection.

770-4144

ASSEMBLY

GRASS CATCHER Model No. 193-015 is available as optional equipment for the mowers shown in this manual.

WARNING

The mower should not be operated without the entire grass catcher or chute deflector in place.

NOTE

Under normal usage bag material is subject to wear, and should be checked periodically. Be sure any replacement bag complies with the mower manufacturer's recommendations. For replacement bags, use only factory authorized replacement bag No. 764-121.

IMPORTANT: After striking a foreign object, stop the engine motor). Remove wire from spark plug, thoroughly inspect the mower for any damage, and repair the damage before restarting and operating the mower.

The steering wheel and seat, with the necessary hardware, are easily assembled to the machine. On the electric starter models, the battery must be activated and installed as outlined in this section.

NOTE

Reference to right-hand or left-hand side of machine is from the driver's seat facing forward.

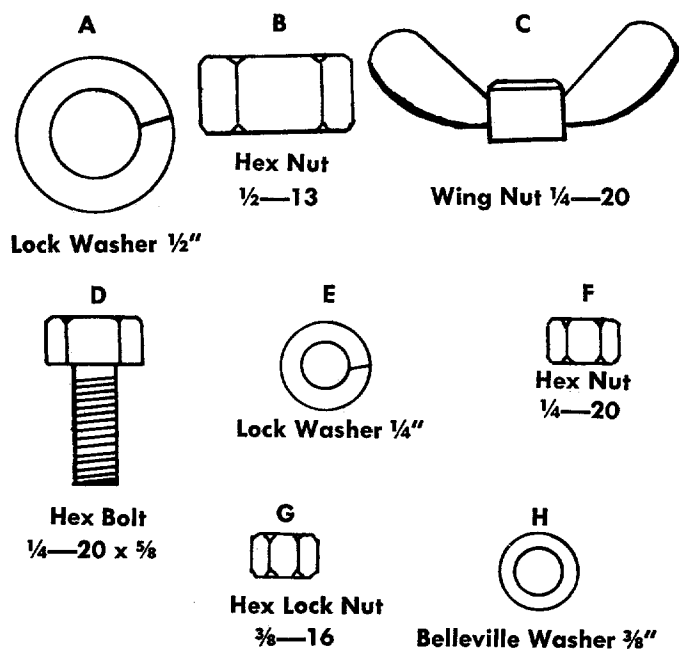


FIGURE 1. HARDWARE SUPPLIED

Step 1. Remove the lawn mower and all parts from the carton. Make certain that all loose parts and literature have been removed before the carton is discarded.

Step 2. Place steering wheel over steering shaft.

Step 3. Secure with Belleville washer and hex nut. See figure 2.

Step 4. Press the cap on the steering wheel by hand. See figure 2.

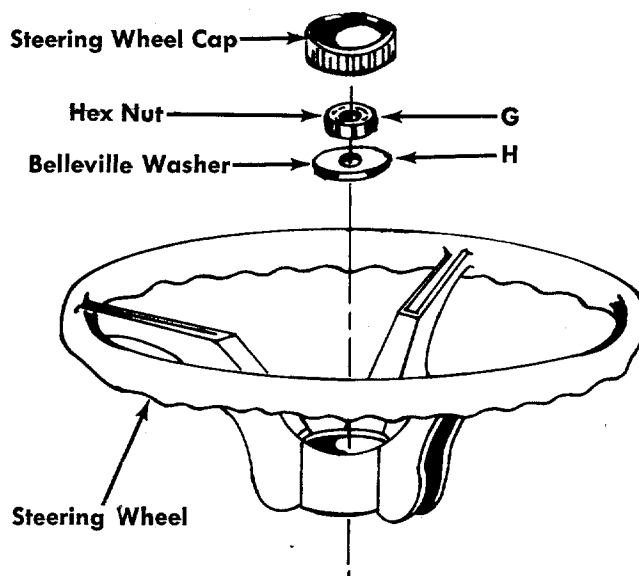


FIGURE 2. STEERING WHEEL ASSEMBLY

Step 5. Your molded seat comes with the mounting bolt molded in the seat.

A. Select one of three hole locations on seat spring.

B. Place seat on spring and secure with lock-washer (A) and hex nut (B). See figures 1 and 3.

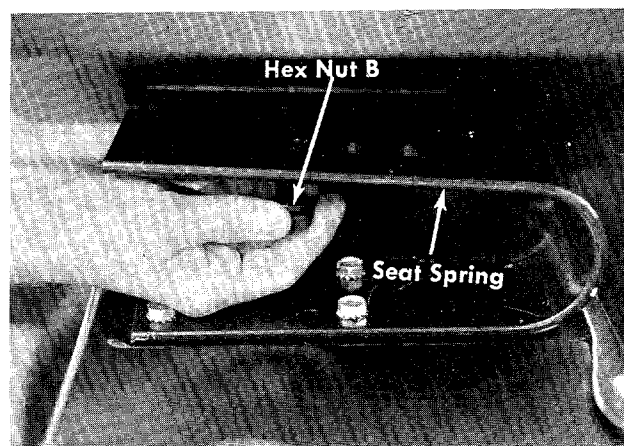


FIGURE 3. SEAT ASSEMBLY

The tires are over-inflated for shipping. Reduce the tire pressure from 7 to 10 psi front and rear.

ACTIVATING THE BATTERY (Electric Start Models Only)

WARNING

Since battery acid is corrosive to metals, do not pour into any sink or drain. Rinse empty Electrolyte containers and mutilate before discarding. If acid is accidentally spilled on battery during filling or charging, or on bench or clothing, etc., flush off with clear water and neutralize with soda or ammonia solution.

- Step 1. Place the battery to be filled on a bench. Never activate the battery in the mower.
- Step 2. Remove the vent plugs.
- Step 3. Place the acid pack in the upright position, pull the tab back to the edge of the carton, pull out hose, snip off end.
- Step 4. Fill each cell until the electrolyte level rises to the split ring at the bottom of the vent well.

CAUTION

Do not over-fill.

- Step 5. After filling the cells, wait five to ten minutes and add additional electrolyte if necessary to bring it up to the proper level.
- Step 6. Replace the vent caps.
- Step 7. Using a battery charger, charge the new battery before installing it in the riding mower.

25-30 amps	10 to 15 minutes
4-6 amps	30 minutes
1 1/4-amps	2 hours

- Step 8. Install the battery.
 - a. Open the hood of the mower.
 - b. Place the battery with the terminals to the **FRONT** in the battery case. See figure 4.
 - c. Hook both hold-down rods under the battery case and place the hold down over the battery caps and secure with wing nuts D.

CAUTION

Be sure the flared edge of the hold down is facing up to avoid damage to the battery.

- d. Attach the free end of the positive cable and the small wire from the ammeter, to the positive battery terminal with bolt E, washer F and nut G. The battery terminal is marked +.
- e. Attach the free end of the negative cable to the negative terminal with bolt E, washer F and nut G. Battery terminal is marked -.

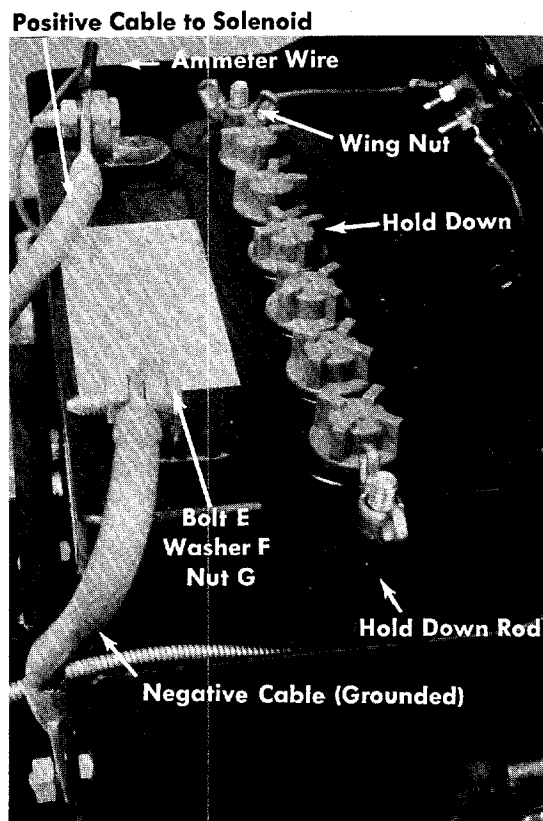


FIGURE 4. INSTALLING THE BATTERY

BATTERY CHARGER

- 1. Your battery may be charged in your rider without removing it or without disturbing the cable connectors at the battery terminals.
- 2. Be sure the switch is in the 12 Volt position.
- 3. Connect battery clips to battery terminals. Clip with (+) mark connects to positive terminal of the battery. Clip with no marking connects to negative terminal of battery. (Red clips are + and black clips are -.) Be sure that battery terminals are clean where charger clips are to be connected. Move clips back and forth several times to be sure a tight connection is made.
- 4. If sparking occurs at battery clips when connecting them to battery terminals the clips should be reversed on the battery terminals.
- 5. Make sure the voltage of the battery is the same as that of the charger, as mentioned before. Connect AC plug to an alternating current outlet of the same

voltage and frequency as shown on the name plate of the charger. (To prevent short circuiting of the battery charger, be sure to connect clips to battery terminals before plugging into the AC outlet.)

6. Your battery charger is equipped with an automatic circuit breaker which protects the charger against short circuits and overloads which cause the circuit breaker to trip open when they occur. After a short cooling off period the circuit breaker will "reset" automatically and allow the charger to operate normally. If the circuit-breaker trips open, make sure battery connections are correct.

7. If the charger continues to trip and you have checked your connections to see that they are correct, the probable cause is in the battery, which may have been allowed to discharge below its normal discharge condition or it may have one or more shorted cells. If this condition exists it will draw too much current and cause the circuit breaker to trip on and off. This will continue until the battery has recovered sufficiently to allow a normal charging current.

8. The charging rate depends upon the AC supply voltage and the internal condition of the battery. Under certain of these conditions the charger may not deliver its maximum charging rate to the battery, but this should not be taken as an indication that the charger is inefficient.

9. The average time required to charge a battery is 8-10 hours for a completely discharged battery.

CONTROLS See figure 5.

This manual should be read in its entirety before you operate your Riding Mower. The more you know and understand about the machine and its operation, the better job it will do for you. While reading the manual, compare the illustrations with your mower to familiarize yourself with the locations of various controls, lubrication points, attachments and adjustment features.

Study the operating instructions and safety precautions thoroughly to insure proper functioning of your mower and to prevent injury to yourself and others. Be sure to save this manual for future reference.

THROTTLE CONTROL

The throttle control is used to regulate the engine speed and to activate the choke on the engine. To get maximum efficiency from cutting, the throttle should be in the FAST position when operating the mower. Pushing the throttle all the way forward, past FAST will choke the engine. See figure 5.

IGNITION KEY

Recoil Model. The key must be turned to the ON position before you pull the recoil handle to start the

engine. Remove the key when the mower is not in use. Turn the key to the left to the OFF position to stop the engine. See figure 10.

Electric Model. The key must be turned to the START position to start the engine. After the engine is running let the key return to the ON position. Remove the key when the mower is not in use. Turn the key to the OFF position to stop the engine. See figure 5.

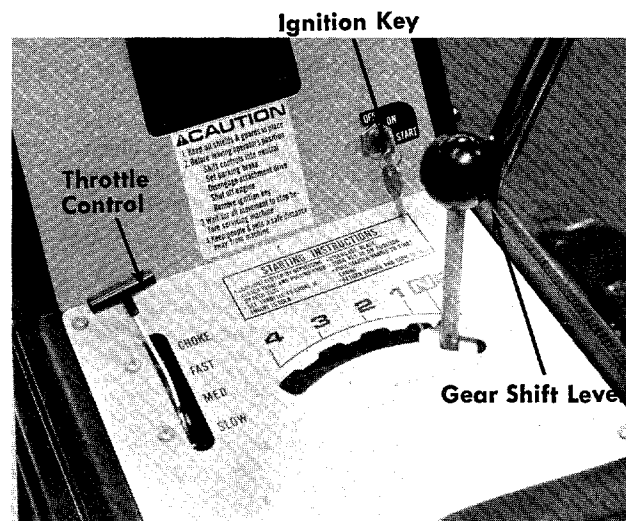


FIGURE 5. CONTROLS

INTERLOCKS (Not Shown)

An interlock safety switch is located on the clutch pedal and the lift and disengagement lever.

The clutch pedal must be depressed all the way down and can be locked and the lift and disengagement lever must be in the disengaged position before the engine can be started.

On the recoil start model, the ignition will be grounded and on the electric start model, the starter will not run.

BRAKE

The brake pedal is located on the right hand side of the mower and is operated by depressing it with your right foot. See figure 6.

BRAKE LOCK

The brake lock is located on the right hand side of the mower. To lock the brake, depress the brake pedal and lift up the lock button. The pedal will stay depressed. To release, depress the brake pedal. Always lock the brake when you park the mower. See figure 6.

CLUTCH

The clutch pedal is located on the left hand side of the mower and is operated with your left foot. Depress the pedal to disengage the drive mechanism. Release the clutch slowly to engage. The clutch and brake pedals must both be depressed when stopping the mower. When shifting gears, the clutch pedal must be disengaged and the mower cannot be moving. See figure 7.

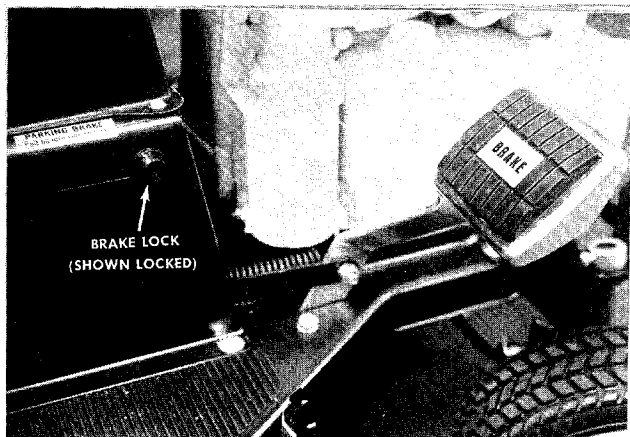


FIGURE 6. BRAKE AND BRAKE LOCK

CLUTCH LOCK

When the clutch pedal is depressed all the way it can be locked by lifting up the lock button. The pedal will stay depressed. To release, depress the pedal. See figure 7.

NOTE

The clutch pedal must be depressed to start the engine.

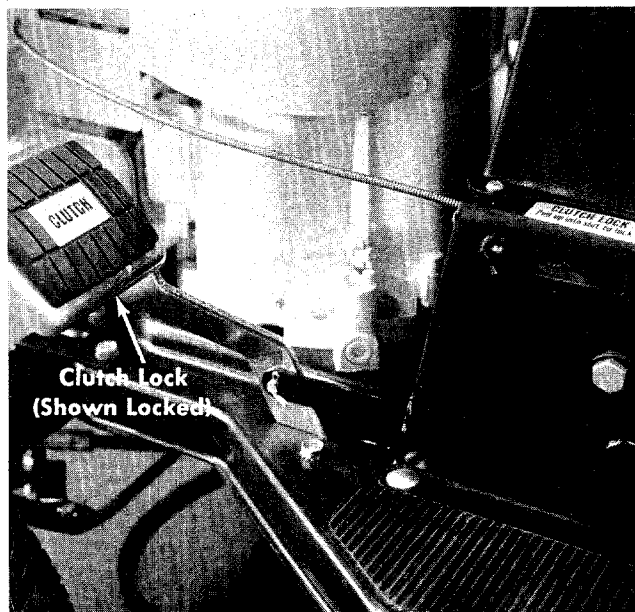


FIGURE 7. CLUTCH AND CLUTCH LOCK

GEAR SHIFT LEVER

Single Speed. The single speed transmission has three positions, FORWARD, NEUTRAL and REVERSE. The clutch pedal must be depressed to shift gears. It may be necessary to release the clutch pedal slightly to engage the gear shift lever in either forward or reverse. Do not force the shift lever. See figure 8.

STARTING INSTRUCTIONS	
• Lock-out clutch	• Turn key to on position
• Set throttle	• Pull rope to start engine
• Disengage blade	• Return rope to lock position

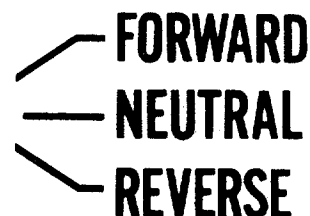


FIGURE 8. SINGLE SPEED TRANSMISSION

Four Speed. The four speed transmission has four forward speeds, neutral and reverse. The clutch pedal must be depressed to shift gears. It may be necessary to release the clutch pedal slightly to shift the gear shift lever. Do not force the shift lever.

- 1st Gear—Heavy Cutting
- 2nd Gear—Medium Cutting
- 3rd Gear—Medium Cutting
- 4th Gear—Light Cutting or Travel Gear
- N—Neutral
- R—Reverse

See figures 5 and 9.

STARTING INSTRUCTIONS	
• Lock-out clutch	• Turn key to on position
• Set throttle	• Pull rope to start
• Disengage blade	• Return rope handle to lock

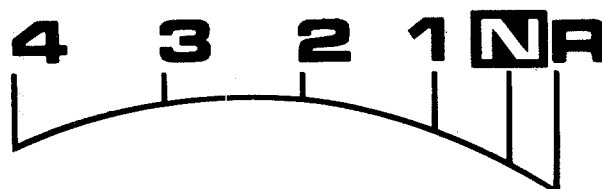


FIGURE 9. FOUR SPEED TRANSMISSIONS

RECOIL STARTER HANDLE

The recoil starter handle is located on the right side of the dashboard. The recoil starter handle can either be pulled while seated on the rider or pulled while standing behind the rider. The ignition key must be on before the engine will start. After the engine starts, the recoil starter handle must be returned and locked into the dashboard before the blade or clutch are engaged. The engine will stop if you do not follow these instructions. See figure 10.

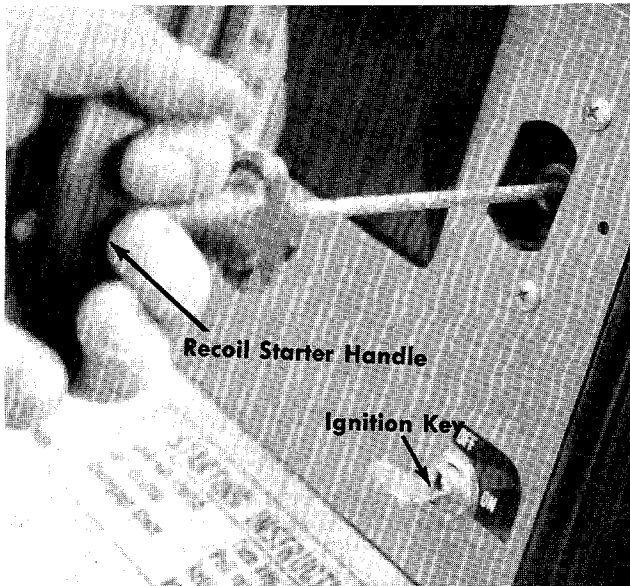


FIGURE 10. RECOIL STARTER

LIFT AND DISENGAGEMENT LEVER

It is used to raise the cutting deck. Pulling it all the way back and locking it disengages the blade.

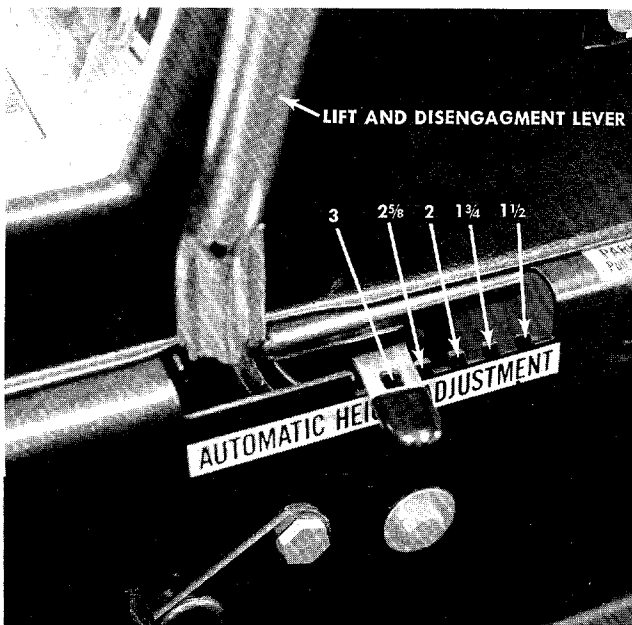


FIGURE 11. HEIGHT OF CUT SETTINGS

NOTE

The engine will not start unless the lift and disengagement lever is in the disengaged position. See figure 11.

CUTTING CONTROLS

The cutting controls consist of the height of cut stop and the wheel height adjusters.

Height Of Cut Stop. See figure 11. Lift the stop and set it at the desired cutting height. Allow the lift and disengagement lever to come forward to rest against the height of cut stop.

Wheel Height Adjuster. 25-inch cut. Remove the axle bolt and place it in the desired cutting position. See figure 12. Both wheels must be in the same relative position.

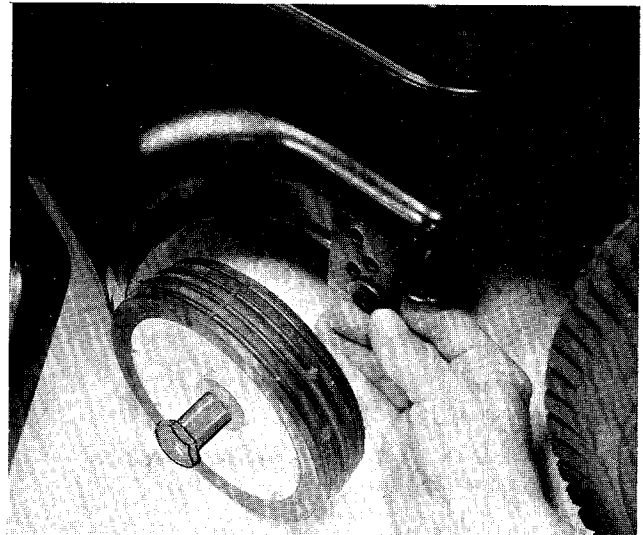


FIGURE 12. WHEEL HEIGHT ADJUSTER—25" DECK

Wheel Height Adjuster. 30-inch cut. Move the lever towards the wheel and set it in the desired cutting height position. See figure 13. Both wheels must be in the same relative position.

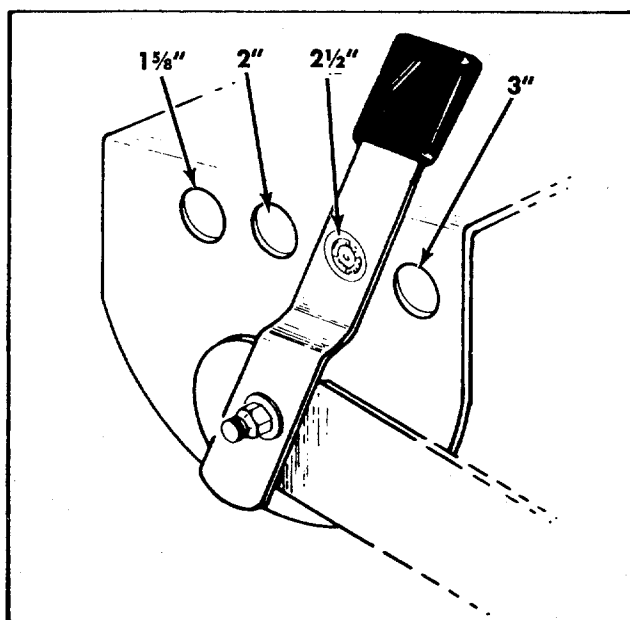


FIGURE 13. WHEEL HEIGHT ADJUSTER

SETTING THE CUTTING HEIGHT

The cutting height of the mower can be set in two different ways: Full Float position where the deck follows the contour of the ground, and the Suspended position where the deck hangs from the frame of the rider. The suspended position is normally used for cutting rough uneven ground.

To set the cutting deck in the full float position: set the wheel height adjusters in the desired cutting height as indicated in figures 12 or 13. Set height of cut stop in the 1 1/2 position. See figure 11.

To set the cutting deck in the suspended position: set the height of cut stop in the desired cutting height and then set the deck wheel so they just clear the ground.

OPERATING INSTRUCTIONS

CAUTION

1. Keep all shields and guards in place.
2. Before leaving operator's position:
 - Shift controls into neutral
 - Set parking brake
 - Disengage attachment drive
 - Shut off engine
 - Remove ignition key
3. Wait for all movement to stop before servicing machine.
4. Keep people and pets a safe distance away from machine.

STARTING THE ENGINE

1. Be sure the crankcase is filled with oil as recommended in the engine manual and put regular gasoline in the gasoline tank.
2. If your engine is equipped with a fuel shut off valve, be sure it is open.
3. Attach the wire to the spark plug.
4. Depress the clutch pedal and lock it down with the speed control lever.
5. Move the lift and disengagement lever backward to the disengaged position and lock it.
6. Set the throttle control lever in the CHOKE position.
7. **Recoil Model.** Turn the ignition key to the ON position, twist the recoil starter handle until it is free and pull it with a quick steady motion. After the engine starts, return the recoil starter handle and twist it until it locks. See figures 10 and 14.

NOTE

If you do not do this the engine will quit running as soon as you engage the clutch or blades.

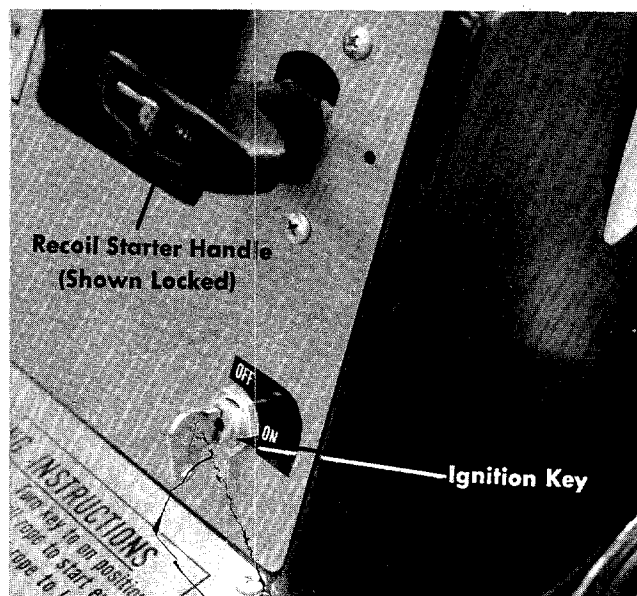


FIGURE 14. RECOIL STARTER

Electric Start Model. Turn the ignition key to the START position. As soon as the engine starts let the key return to the ON position. See figure 5. Slowly return the throttle to the running position as soon as the engine starts.

8. To stop either model, turn the ignition key to the OFF position and remove the key when the rider is not in use.

PUTTING THE RIDER IN MOTION

1. Advance the throttle control from $\frac{3}{4}$ to full throttle to prevent strain on the engine and to operate the cutting blades.
2. Depress the clutch pedal so the clutch lock releases.
3. Place the gear shift lever in the FORWARD position on the single speed unit and in number 1 position on the four speed unit.
4. Slowly release the clutch pedal.
5. To stop the rider, depress the clutch pedal and the brake pedal.
6. The blade can be engaged either while moving or while standing still. Move the lift and disengagement lever forward slowly until the blade is running.

NOTE

As you become more familiar with the four speed transmission, stop the unit and shift into a higher gear.

STOPPING

Engine—Turn the ignition key to the left to the OFF position.

Rider—Depress the clutch and brake pedals.

Blades—Move the lift and disengagement lever all the way to the rear and lock it.

MAINTENANCE

CRANKCASE OIL

To ensure maximum engine performance, perform the following periodic maintenance:

Check oil level before starting engine and after every 5 hours of operation. Be sure oil level is maintained to FULL POINT OF OVERFLOWING or to FULL MARK on dipstick.

Change Oil after first 5 hours of operation. Thereafter change oil every 25 hours of operation. Remove oil drain plug and drain oil while engine is warm. Replace drain plug. Remove dipstick or oil filler plug and refill with new oil of proper grade. Replace dipstick or plug.

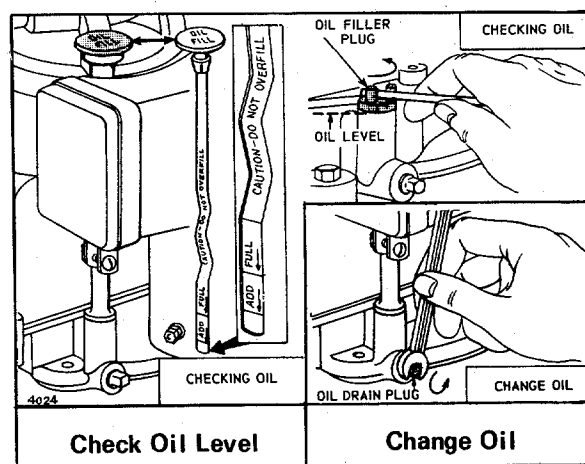


FIGURE 15. CHECKING OIL

MOWER DECK

The underside of the mower deck should be cleaned after each period of use as grass clippings, leaves, dirt and other matter will accumulate. This accumulation of grass clippings, etc., is undesirable as it will invite rust and corrosion and may cause an uneven discharge of grass clippings at the next mowing.

The deck may be cleaned by tilting the mower on its rear wheels. Scrape clean with a suitable tool or by washing with a stream of water from a garden hose.

Be sure to disconnect the spark plug wire and ground it while performing this maintenance.

BLADES

WARNING

Disconnect the spark plug wire and remove the ignition key before removing the blades.

Sharp and balanced blades are essential for efficient mowing and long mower and engine life. When sharpening blades, file equal amounts of metal from each side. The blades should be balanced before they are reinstalled. An unbalanced blade will cause excessive vibration and undue wear on the mower and the engine. When reassembling, all parts must be installed in the proper order and fastened securely.

Remove the $\frac{3}{8}$ " bolt and lockwasher. Pull the blade and adapter off the mower deck. To remove the adapter from the blade, remove the two $\frac{5}{16}$ " bolts, lockwashers and nuts. See figure 16.

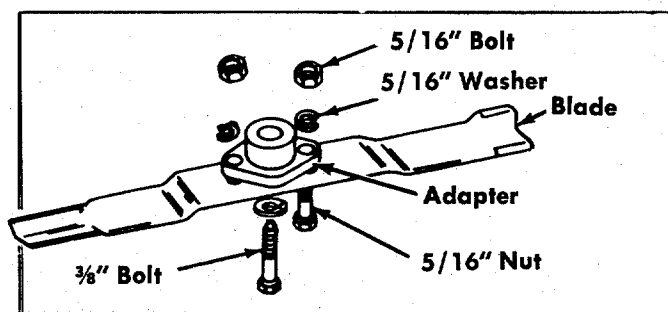


FIGURE 16. BLADE REMOVAL

BRAKE ADJUSTMENT See figure 17.

To adjust the brake tighten the locknut one half turn and then test the brakes. After attaining the proper adjustment, replace the cotter pin.

The brake is located by the right rear wheel inside the frame.

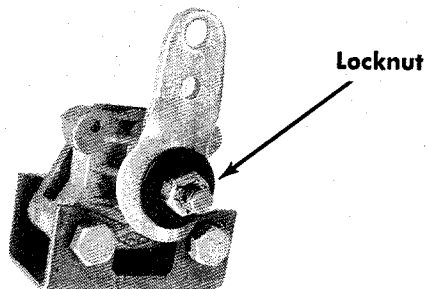


FIGURE 17. BRAKE ADJUSTMENT

CHAIN ADJUSTMENT

After the first five hours of operation the initial slack should be removed from the chain. The chain should be tight enough so that it deflects approximately 1/2" when it is depressed with the thumb.

To tighten the chain, loosen the two locking nuts on each side of the rear axle.

Tighten the adjusting nuts until you have the proper chain tension.

Tighten the locking nuts on the rear axle. See figure 18.

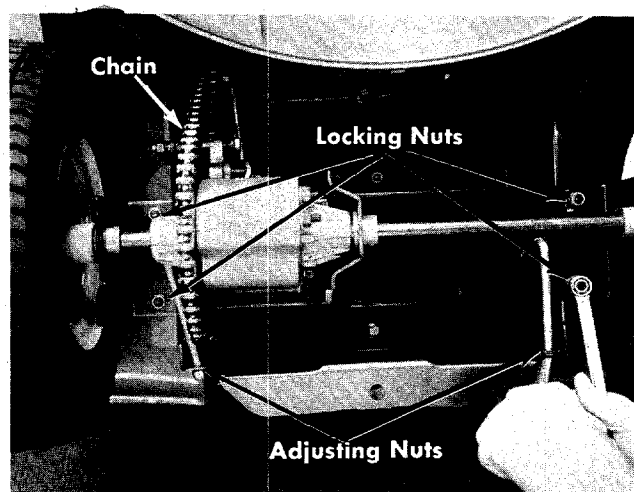


FIGURE 18. CHAIN ADJUSTMENT

LUBRICATION

Lubricate the following points with SAE 30 non-detergent engine oil.

Front Wheel Bearings, figure 19.

King Pin Bearings, figure 19.

Rear Axle Bearings, figure 20.

Steering Shaft, figure 21.

Lubricate the steering gears with an automotive multi-purpose type grease. See figure 21.



FIGURE 19. FRONT WHEEL BEARINGS

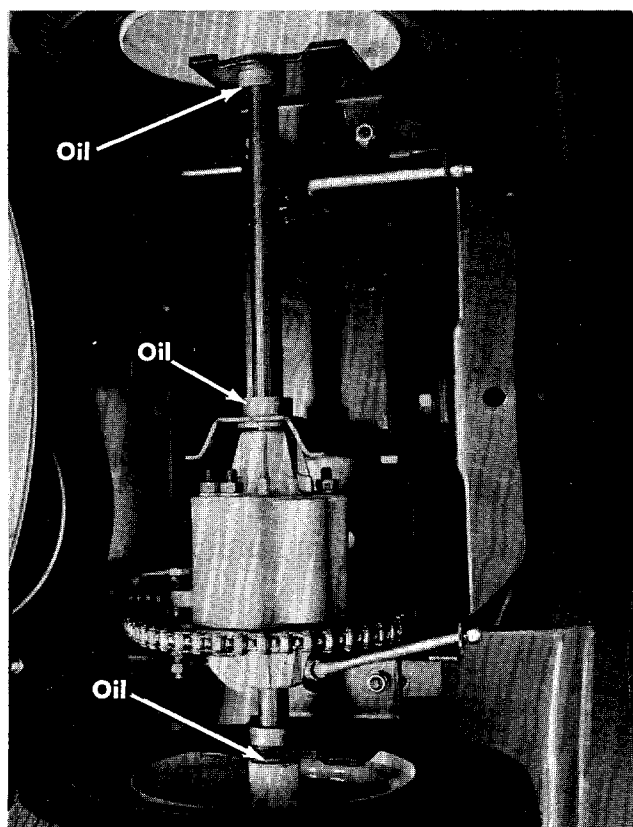


FIGURE 20. REAR AXLE

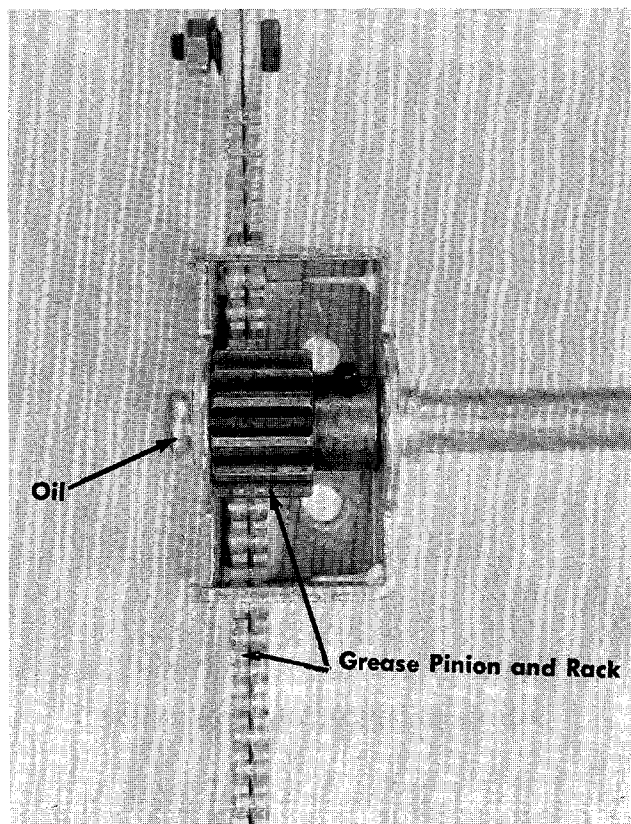


FIGURE 21. STEERING GEAR

BELT REMOVAL (Blade or Transmission Belt)

- Step 1. Place the lift and disengagement lever in the disengaged position. See figure 11.
- Step 2. Remove the belt keeper and shoulder bolt next to the engine pulley. See figure 22.

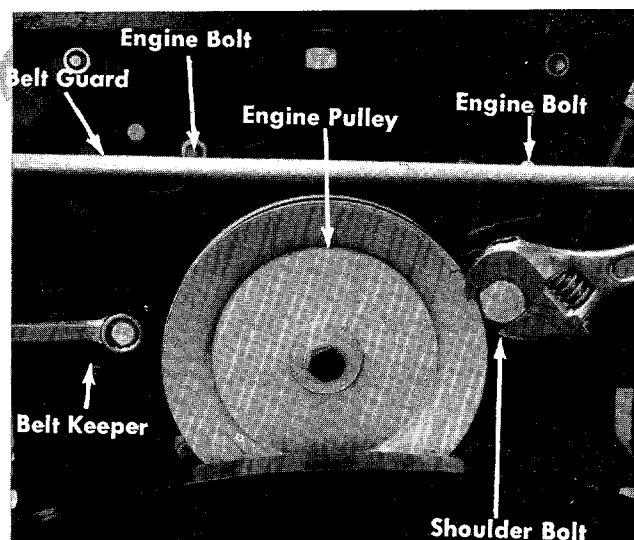


FIGURE 22. ENGINE PULLEY

- Step 3. Remove the blade belt from the engine pulley.
- Step 4. Engage the Lift and Disengagement Lever.
- Step 5. Remove the tension springs on the rear of the deck.
- Step 6. Remove the six pins holding the deck to the frame. See figure 23.
- Step 7. Remove the deck and set it aside.
- Step 8. **Removing the blade belt 25" models.** See figure 24.
 - a. Remove the shoulder bolt from the deck.
 - b. Remove both belt keepers.
 - c. Remove and replace the belt.

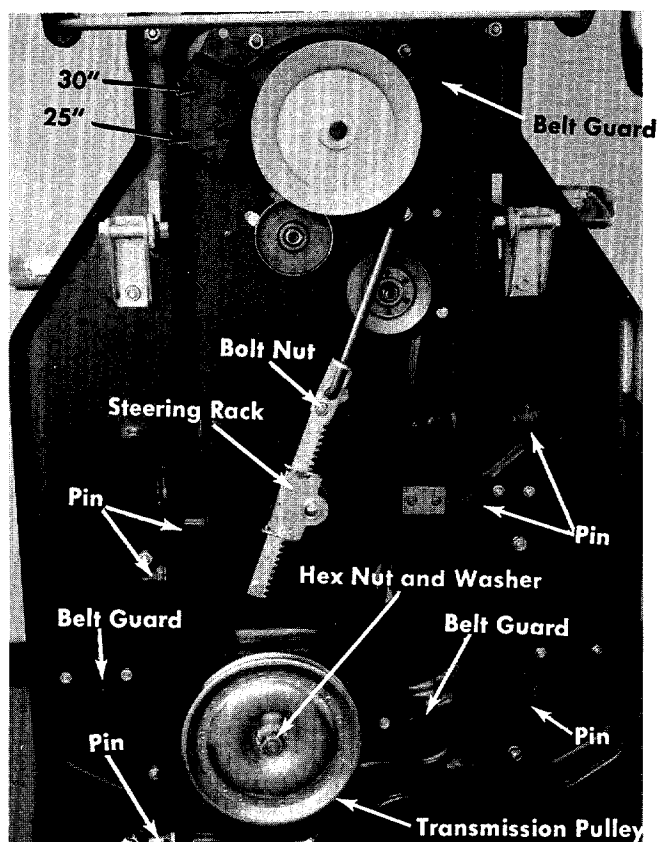


FIGURE 23. BOTTOM VIEW

NOTE

By working between the frame and the deck, it is possible to remove and replace the deck belt without removing the deck, however, the working space is limited.

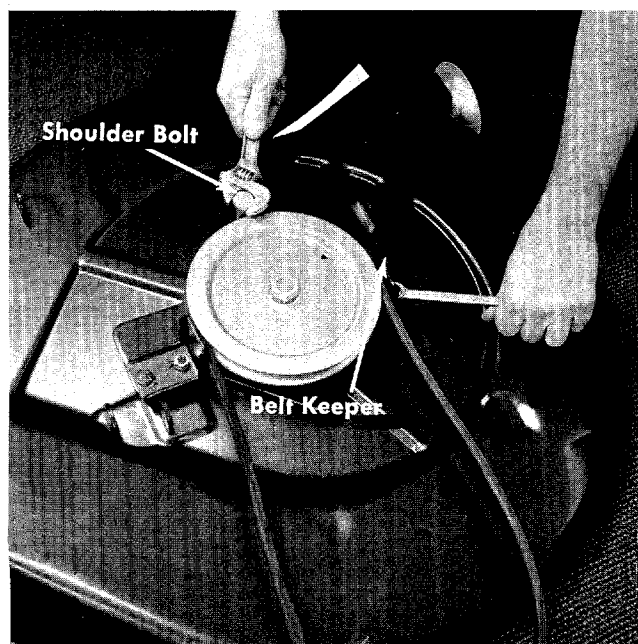


FIGURE 24. 25" DECK

Removing the blade belt 30" models. See figure 25.

- a. Take off both belt guards by removing the two bolts and nuts holding the belt guards to the deck.
- b. Remove and replace the belt.

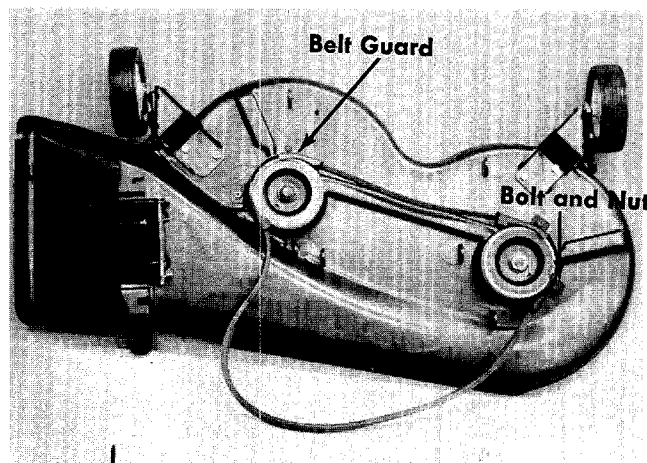


FIGURE 25. 30" DECK

9. Removing the transmission belt. See figures 22 and 23.

- a. Remove the entire belt guard from the engine pulley by removing the two front engine bolts. See figures 22 and 23.
- b. Remove the two belt guards from the transmission pulley. See figure 23.
- c. Remove the bolt and nut from the steering rack and remove the belt.
- d. Reassemble in reverse order with the new belt.

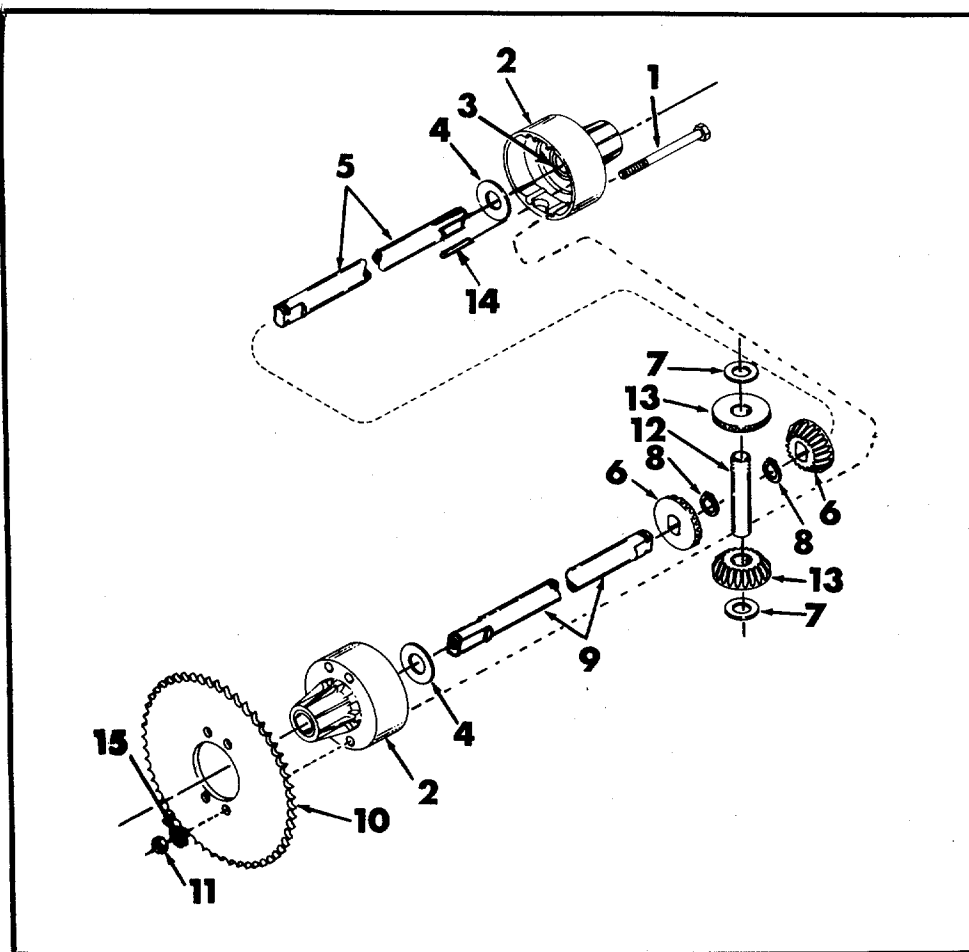


FIGURE 26. DIFFERENTIAL ASSEMBLY

PARTS LIST FOR FIGURE 26 DIFFERENTIAL
PART NUMBER 717-270

REF. NO.	PART NO.	COLOR CODE	DESCRIPTION	NEW PART
1	710-363		Hex Hd. Cap Scr. 5/16-24 x 4.00" Lg.*	
2	719-150		Differential Housing	
3	748-169		Sleeve Bearing	
4	736-188		Washer	
5	738-190		Shaft—Long	N
6	748-185		Motor Gear Double "D" Hole	
7	736-187		Flat Washer	
8	716-101		Snap Ring for .750 Shaft	
9	738-189		Shaft—Short USE 753-0148	N
10	9054		Sprocket	
11	712-237		Hex Center Locknut 5/16-24 Thd.	
12	711-276		Drive Pin	
13	748-158		Miter Gear Round Hole	
14	715-123		Dowel Pin 3/16" Dia. x 5/8" Lg.	
15	736-119		Spring Lockwasher 5/16" Scr.*	

Lubricate with grease—High Temp. 450° (2 oz.)
#737-120.

N

*For faster service obtain standard nuts, bolts, and washers locally. If these items cannot be obtained locally, order by part number and size as shown on the parts list.

IF YOU WRITE TO US ABOUT THIS ARTICLE OR
IF YOU ORDER REPLACEMENT PARTS ALWAYS
MENTION THIS STOCK AND MODEL NUMBER

STOCK No. _____ MODEL No. _____

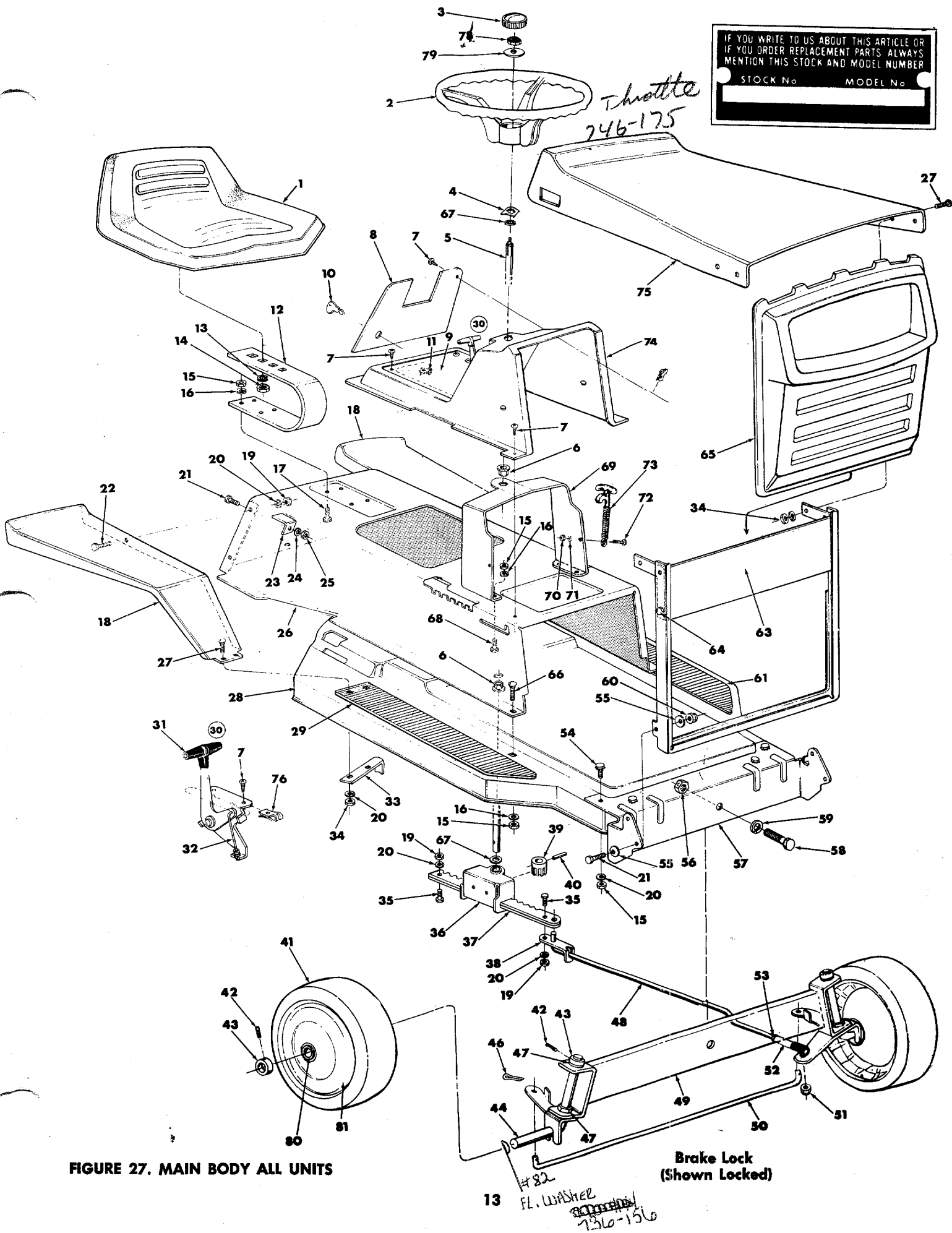


FIGURE 27. MAIN BODY ALL UNITS

PARTS LIST FOR FIGURE 27

REF. NO.	PART NO.	COLOR CODE	DESCRIPTION	NEW PART	REF. NO.	PART NO.	COLOR CODE	DESCRIPTION	NEW PART
1	757-241		Seat Complete with Bolt	N	33	11055		Transmission Belt Guard	
2	731-219		12 inch Dia. Steering Wheel	N	34	712-287		Hex Nut 1/4-20 Thd.*	
3	731-220		Cap For Steering Wheel	N	35	710-412		Hex Hd. Cap Scr. 1/4-28 x .75" Lg.*	
4	712-222		Push Nut 5/8" Dia.		36	11074		Steering Housing Assembly	
5	738-199		Steering Shaft	N	37	11048		Steering Segment (2 per unit)	
6	748-227		Hex Flange Bearing .630 I.D.		38	11047		Steering Rod Bracket	
7	710-351		Truss Hd. Mach. B-Tapp Scr. #10 x .50" Lg.		39	748-203		12 Tooth Spur Gear	
8	11076		Instrument Panel Bezel—For Recoil Starter		40	715-120		Spring Pin Spirol 3/16" Dia. x 1.00" Lg.*	
	11077		Instrument Panel Bezel—For Electric Starter		41	734-510		Front Wheel Assembly—Comp. 133-380 & 385	N
9	11079		Transmission Panel Bezel—Single Speed			734-511		Front Wheel—Tire Only 133-380 & 385	N
	11089		Transmission Panel Bezel—Four Speed			734-488		Front Wheel Assembly—Comp. 133-390 & 395	N
10	725-266		Ignition Switch—Recoil Starter			734-490		Front Wheel—Tire Only 133-390 & 395	N
	725-128		Ignition Key Only—Recoil Starter		42	710-494		Square Hd. Set Scr. 5/16-18 x .38" Lg. Cup Point	
	725-267		Ignition Switch—Electric Starter		43	711-169		Collar for a 5/8" I.D.	
	725-201		Ignition Key Only—Electric Starter		44	9095—458		Front Axle Assembly R.H.	
11	712-207		Speed Nut #10-24		45	9098—458		Front Axle Assembly L.H.	
12	732-256		Seat Spring		46	714-115		Cotter Pin 3/32" Dia. x .75" Lg.*	
13	736-921		Spring Lockwasher 1/2" Scr.*		47	748-227		Hex Flange Bearing .630 I.D.	
14	712-206		Hex Nut 1/2-13 Thd.*		48	711-547		Steering Rod	
15	712-267		Hex Nut 5/16-18 Thd.*		49	11043—458		Pivot Bar Assembly	
16	736-119		Spring Lockwasher 5/16" Scr.*		50	11046		Tie Rod	
17	710-322		Hex Sems Scr. 5/16-18 x 1.00" Lg.*		51	712-116		Hex Inserted Locknut 3/8-24 Thd.	
18	11002—458		Rear Fender (R.H. and L.H.)		52	723-156		Ball Joint Assembly	
19	712-138		Hex Nut 1/4-28 Thd.*		53	712-711		Hex Jam Nut 3/8-24 Thd.*	
20	736-329		Spring Lockwasher 1/4" Scr.*		54	710-198		Hex Sems Scr. 5/16-18 x .75" Lg.*	
21	710-216		Hex Hd. Cap Scr. 3/8-16 x .75" Lg.*		55	736-105		Belleville Washer	
22	710-195		Hex Hd. Cap Scr. 1/4-28 x .62" Lg.*		56	712-923		Hex Center Jam Nut 5/8-18 Thd.*	
23	9963—458		Hitch Bracket		57	10496—458		Front Pivot Bracket	
24	736-169		Spring Lockwasher 3/8" Scr.*		58	710-312		Hex Hd. Cap Scr. 5/8-18 x 1.31—Special	
25	712-798		Hex Nut 3/8-16 Thd.*		59	736-158		Spring Lockwasher 5/8" Scr.*	
26	11001—458		Upper Frame		60	712-375		Hex Center Locknut 3/8-16 Thd.	
27	710-255		Truss Hd. Mach. Scr. 1/4-20 x .75" Lg.*		61	735-145		Foot Pad L.H.	
28	11000—458		Frame		62	11006		Grill Frame	
29	735-146		Foot Pad R.H.		63	11007		Head Lamp Bracket	
30	746-161		Throttle Control 8 H.P. B. & S. And 5 and 8 H.P. Tec.		64	710-286		Truss Hd. Mach. Scr. 1/4-20 x .50" Lg.*	
	746-175		Throttle Control 5 H.P. B.&S.		65	731-216		Grille	N
31	722-111		Knob Only		66	710-451		Carriage Bolt 5/16-18 x .75" Lg.*	
32	—		Part of Throttle Control Ref. No. 30		67	736-192		Flat Washer .531 I.D. x .930 O.D.	
					68	710-259		Hex Sems Scr 5/16-18 x .62" Lg.*	

When ordering replacement tires include all the information on the side wall of the tire such as the size and brand name. as shown on parts list.

*For faster service obtain standard nuts, bolts and washers locally. If these items cannot be obtained locally order by part number and size

(458—Arctic Blue Flake) When ordering parts if color or finish is important, use the appropriate color code shown at the left. For example Ref. No. 18 458—11002 would be a blue fender.

The engine is not under warranty by the mower manufacturer. If repairs or service is needed on the engine, please contact your nearest authorized engine service outlet. Check the "Yellow Pages" of your telephone book under "Engines—Gasoline."



PARTS LIST (CONTINUED)

REF. NO.	PART NO.	COLOR CODE	DESCRIPTION	NEW PART
69	11860		Steering Frame	N
70	712-287		Hex Nut 1/4-20 Thd.*	
71	736-329		Spring Lockwasher 1/4" Scr.*	
72	710-289		Hex Hd. Cap Scr. 1/4-20 x .50" Lg.*	
73	723-296		Hood Lock Assembly	N
74	731-223		Dash Panel	N
75	11859—458		Front Hood	N
76	712-344		Speed Nut #10-Z	
78	712-181		Hex Top Lock Nut 3/8-16 Thd.	
79	736-174		Wave Washer .660 I.D. x .880 O.D.	
80	748-0707		Flange Bearing with Flats (Running (change) (for all) (133-380 & 385)	
	748-184		Flange Bearing with Flats (133-390 & 395)	
81	10152		Front Wheel Rim Ass'y. (133-380 & 385)	
	734-491		Front Wheel Rim Ass'y. (133-390 & 395)	N
82	736-156		FL. WASHER. (Running Change)	

When ordering replacement tires include all the information on the side wall of the tire such as the size and brand name, as shown on parts list.

*For faster service obtain standard nuts, bolts and washers locally. If these items cannot be obtained locally order by part number and size

(458—Arctic Blue Flake) When ordering parts if color or finish is important, use the appropriate color code shown at the left. For example Ref. No. 18 458—11002 would be a blue fender.

The engine is not under warranty by the mower manufacturer. If repair or service is needed on the engine, please contact your nearest authorized engine service outlet. Check the "Yellow Pages" of your telephone book under "Engine—Gasoline."



751-124 muffler extension
11858 muffler bracket

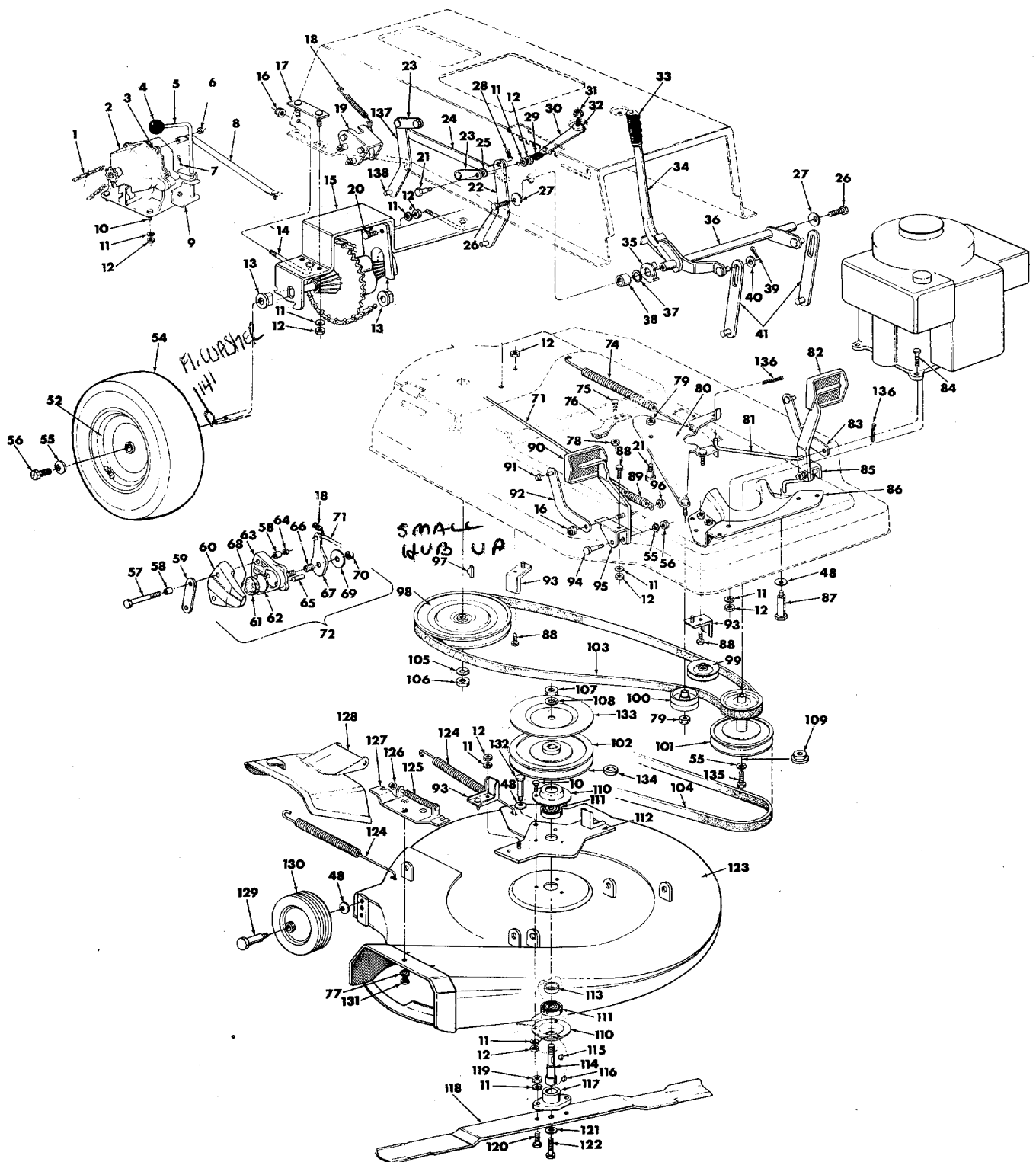


FIGURE 28. CUTTING ASSEMBLY 25"

PARTS LIST FOR FIGURE 28 — 25" DECK AND FRAME VIEW

REF. NO.	PART NO.	COLOR CODE	DESCRIPTION	NEW PART	REF. NO.	PART NO.	COLOR CODE	DESCRIPTION	NEW PART
1	713-161		#41 Chain ½" Pitch x 73 Links (Single Speed)		26	710-201		Hex Hd. Cap Scr. ⅝-16 x .62" Lg.*	
2	713-723		#41 Master Link ½" Pitch		27	736-219		Belleville Washer .400 I.D. x 1.13 O.D.	
	717-222		Single Speed Transmission Ass'y. Comp.		28	714-101		Internal Cotter Pin ½" Dia.	
3	710-412		Hex Hd. Cap Scr. ¼-28 x .75" Lg.* (Single Speed)		29	11249		Height Adjustment Knob	
4	722-115		Ball Knob		30	11027		Handle Stop Bracket Assembly	
5	11080		Transmission Shift Lever Ass'y. (Single Speed)		31	712-429		Hex Inserted Locknut 5/16-18 Thd.	
6	712-117		Hex Center Locknut ¼-28 Thd.		32	735-126		Rubber Washer .33 I.D. x .87 O.D.	
7	714-474		Cotter Pin ⅛" Dia. x .75" Lg.*		33	8118		Grip Finger—Black	
8	10396		Transmission Support Bracket Ass'y.		34	11030		Lift Handle R.H.	
9	11013		Shift—Pivot Bracket		35	11029		Handle Pivot Bracket	
10	710-322		Hex Sems Cap Scr. 5/16-18 x 1.00" Lg.* (3 Req'd.)		36	11032		Lift Handle Bracket Assembly	
11	736-119		Spring Lockwasher 5/16" Scr.*		37	736-233		Wave Washer .660 I.D. x .82 O.D.	
12	712-267		Hex Nut 5/16-18 Thd.*		38	748-201		Spacer .635 I.D. x .880 O.D. x .57" Lg.	
13	748-151		Flange Bearing with Flats .753" I.D.		39	714-115		Cotter Pin ⅛" Dia. x 1.00" Lg.*	
14	710-437		Chain Adjustment Link 5/16-18 Thd.		40	736-192		Flat Washer .531 I.D. x .93 O.D.	
15	11009		Rear Axle Bracket		41	11025		Lockout Link Assembly	
16	712-429		Hex Inserted Locknut 5/16-18 Thd.		52	734-517		Rear Wheel Rim Assembly (133-380 & 335)	N
17	10360		Axle Bolt Plate Ass'y.		54	734-298		Rear Wheel Tire Only 13.0 x 5.0 (133-380 & 385)	N
18	732-157		Spring .380 O.D. x 3.25 (Brake Return)			734-523		Rear Wheel Ass'y. Comp. (133-380 & 385)	N
19	11011		Disc Brake Bracket Assembly		55	736-242		Belleville Washer .345 I.D. x .88 O.D.	N
20	710-198		Hex Sems Scr. 5/16-18 x .75" Lg.*		56	710-0568		Hex Hd. Cap Scr. 5/16-18 x .62" Special	
21	738-140		Shoulder Scr. .431 Dia. x .18" Lg.		57	710-176		Hex Hd. Cap Scr. 5/16-18 x 2.75" Lg.	
22	11023		Deck Link Ass'y. (3 Req'd.)		58	761-133		Spacer for Disc Brake .322 I.D. x .38	
23	9721		Pivot Link Assembly		59	11010		Brake Plate	
24	11014		Connecting Lift Bracket						
25	736-0264		Flat Washer .344 I.D. x .62 O.D.						

.344 I.D. x .62 O.D.

When ordering replacement tires include all the information on the side wall of the tire such as the size and brand name. as shown on parts list.

*For faster service obtain standard nuts, bolts and washers locally. If these items cannot be obtained locally order by part number and size

(458—Arctic Blue Flake) When ordering parts if color or finish is important, use the appropriate color code shown at the left. For example Ref. No. 80 11059—458 would be a blue idler bracket.

The engine is not under warranty by the mower manufacturer. If repair or service is needed on the engine, please contact your nearest authorized engine service outlet. Check the "Yellow Pages" of your telephone book under "Engine—Gasoline."



PARTS LIST (CONTINUED)

REF. NO.	PART NO.	COLOR CODE	DESCRIPTION	NEW PART	REF. NO.	PART NO.	COLOR CODE	DESCRIPTION	NEW PART
60	12-1329-0000		Casting Carrier Side		101	756-173		Two Step Engine Pulley	
61	15-1154-1079		Friction Pad .250 Thick		102	756-143		Deck Split Pulley .63 I.D.	
62	03-1345-0000		Disc Backup		103	756-164		"V"-Belt 1/2 x 63" Lg. (Drive Belt)	
63	12-1984-0007		Casting Cam Side		104	754-138		"V"-Belt 21/32 x .50" Lg. (Blade Belt)	
64	712-158		Hex Center Locknut 5/16-18 Thd.		105	736-921		Spring Lockwasher 1/2" Scr.*	
65	05-1033-0000		Push Pin		106	712-922		Hex Jam Nut 1/2-20 Thd.	
66	06-1029-0000		Spring		107	712-242		Hex Jam Nut 5/8-11 Thd.	
67	18-1687-0000		Cam Lever		108	736-158		Spring Lockwasher 5/8" Scr.*	
68	15-1154-1049		Friction Pad .450 Thick		109	711-572		Step Washer for Engine Pulley	
69	03-1030-0000		Washer		110	741-163		Housing—Bearing Ass'y. (Includes Ref. No. 111)	
70	02-1011-0000		Hex Locknut		111	741-919		Ball Bearing .787 I.D. x 1.85 O.D.	
71	747-107		Brake Rod .25 Dia. x 24.12" Lg.			8253		Housing—Bearing Only	
72	761-130		Disc Brake Assembly—Comp.		112	11541		Belt Guard Assembly	
74	732-191		Spring (Idler) .75 O.D. x 11.0" Lg.		113	750-142		Spacer .836 I.D. x 1.01 O.D. x .320 Thk.	
75	710-134		Carriage Bolt 1/4-20 x .62" Lg.*		114	711-405		Spindle	
76	761-148		Blade Brake Ass'y. (133-380 & 385)		115	714-388		#61 Hi-Pro Key 3/16 x 5/8" Dia.	
77	736-329		Spring Lockwasher 1/4" Scr.*		116	714-365		#6 Hi-Pro Key 5/32 x 5/8" Dia.	
78	712-287		Hex Nut 1/4-20 Thd.*		117	10769		Blade Adapter Kit	
79	712-116		Hex Inserted Locknut 3/8-24 Thd.		118	742-132		25 inch Blade	
80	11059—458		Idler Bracket Assembly		119	736-119		Spring Lockwasher 5/16" Scr.*	
81	11061		Clutch Rod		120	710-117		Hex Hd. Cap Scr. 5/16-24 x 1.00" Lg. Heat Treated	
82	11037		Clutch Pedal Assembly		121	736-217		Spring Lockwasher 3/8" Scr. Heavy Duty	
	10614		Pedal Pad—Vinyl		122	710-459		Hex Hd. Cap Scr. 3/8-24 x 1.50" Lg. Heat Treated	
83	11057		Parking Brake—Lever Ass'y. L.H.		123	11083		25 inch Deck Assembly	
84	710-442		Hex Hd. Cap Scr. 5/16-18 x 1.50" Lg.*		124	732-153		Deck Spring	
85	11755		Pedal U-Bracket L.H. Ass'y. (Only 25")		125	732-261		Torsion Spring	
86	10480		Engine Belt Guard Ass'y.		126	726-106		Push Nut 1/4" Rod	
87	710-151		Hex Hd. Cap Scr. 3/8-24 x 2.00" Lg.*		127	11399		Adapter Plate Assembly	
88	710-259		Hex Sems Scr. 5/16-18 x .62" Lg.*		128	11571		Chute Cover Assembly	
89	732-245		Brake Spring		129	738-119		Axle Bolt .625 Dia. x 1.75	
90	11036		Brake Pedal Assembly		130	734-295		Wheel Ass'y. Comp. 5.0" Dia	
	10614		Pedal Pad—Vinyl		131	710-195		Hex Hd. Cap Scr. 1/4-28 x .62" Lg. (3 Req'd.)	
91	726-121		Push Cap .25 Dia.		132	738-129		Shoulder Scr. .498" Dia. x 2.00	
92	11056		Parking Brake—Lever Ass'y. R.H.		133	11073		Blade Brake Disc	
93	10426		Belt Keeper Assembly		134	748-168		Spacer	
94	738-213		Shoulder Bolt .498 Dia. x 1.45		135	710-151		Hex Hd. Cap Scr. 3/8-24 x 2.00" Lg.*	
95	11039		Pedal "U"-Bracket Ass'y. (1 Req'd. on 25" Deck)		136	714-115		Cotter-Pin 1/8" Dia. x 1.00" Lg.*	
96	726-100		Push Nut 3/8" Dia. Rod		137	11024		Deck Link	
97	714-129		#4 Hi-Pro Key 3/32 x 5/8" Dia. (Four Speed)		138	711-332		Lift Bracket Pin	
98	756-175		Transmission Split Pulley .50 I.D.		139	11634		Chute Cover Ass'y. Comp. (includes Ref. No's. 77, 125, 126, 127, 128 and 131)	
99	756-116		"V"-Idler 3.06 O.D.		140	11910		25 inch Deck Ass'y. Comp. (includes Blade, Blade Spindle, Wheels, Belt Guards and all hardware)	
100	756-178		"P"-Flat Idler 2.75 O.D.		141	736-134		FL WASHER CRUMMING CHANGE	

When ordering replacement tires include all the information on the side wall of the tire such as the size and brand name. as shown on parts list.

*For faster service obtain standard nuts, bolts and washers locally. If these items cannot be obtained locally order by part number and size

(458—Arctic Blue Flake)

When ordering parts if color or finish is important, use the appropriate color code shown at the left. For example Ref. No. 80 11059—458 would be a blue idler bracket.

The engine is not under warranty by the mower manufacturer. If repairs or service is needed on the engine, please contact your nearest authorized engine service outlet. Check the "Yellow Pages" of your telephone book under "Engines—Gasoline."



SOME UNITS MAY HAVE INDIVIDUAL AXLE BRKTS
LH PART No. 09126 RH 09124

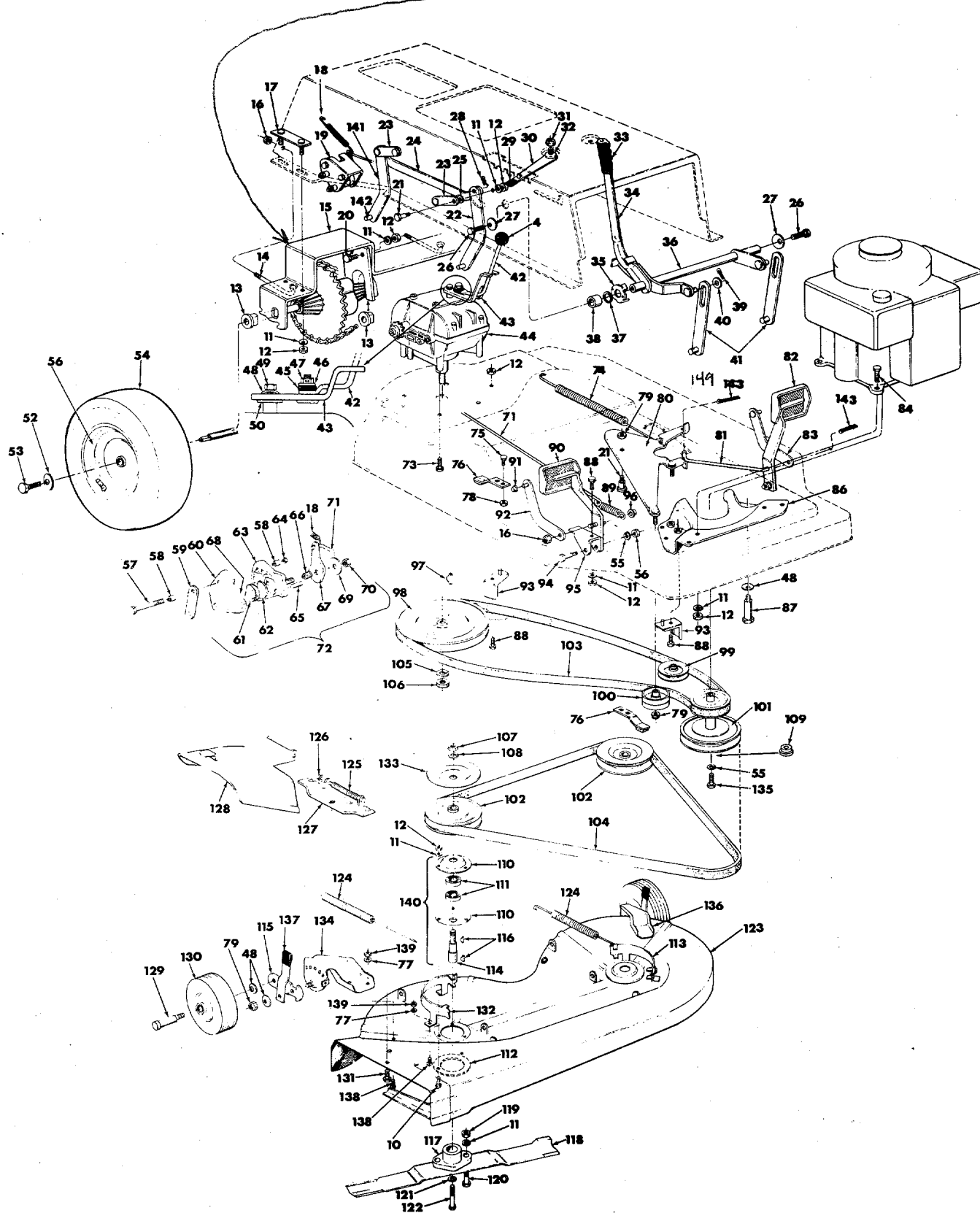


FIGURE 29. CUTTING ASSEMBLY—30"

PARTS LIST FOR FIGURE 29 — 30" DECK AND FRAME VIEW

REF. NO.	PART NO.	COLOR CODE	DESCRIPTION	NEW PART	REF. NO.	PART NO.	COLOR CODE	DESCRIPTION	NEW PART
1	713-104		#41 Chain 1/2" Pitch x 65 Links (Four Speed)		46	736-159		Flat Washer .344 I.D. x .88 O.D. (Four Speed)	
	713-723		#41 Master Link 1/2" Pitch		47	712-158		Hex Center Locknut 5/16-18 Thd. (Four Speed)	
4	722-115		Ball Knob		48	736-242		Belleville Washer .345 I.D. x .88 O.D. (Four Speed)	
13	748-151		Flange Bearing with Flats .753" I.D.		49	710-237		Hex Hd Cap Scr. 5/16-24 x .62" Lg. (Four Speed)	
14	710-437		Chain Adjustment Link 5/16-18 Thd.		50	717-234		Hardened Washer 1.00 O.D. (Four Speed)	
15	11009		Rear Axle Bracket		52	736-242		Belleville Washer .345 I.D. x .88 O.D.	N
16	712-429		Hex Inserted Locknut 5/16-18 Thd.		53	710-0568		Hex Hd Cap Scr. 5/16-18 x .62" Lg. (Four Speed)	
17	10360		Axle Bolt Plate Ass'y.		54	734-427		Rear Wheel Tire Only 15.0 x 6.0 (133-390 & 395)	N
18	732-157		Spring .380 O.D. x 3.25 (Brake Return)			734-524		Rear Wheel Ass'y. Comp.	N
19	11011		Disc Brake Bracket Assembly		56	734-521		Rear Wheel Rim Assembly Complete (133-390 & 395)	N
20	710-198		Hex Sems Scr. 5/16-18 x .75" Lg.*		57	710-176		Hex Hd. Cap Scr. 5/16-18 x 2.75" Lg.	
21	738-140		Shoulder Scr. .431 Dia. x .18" Lg.		58	761-133		Spacer for Disc Brake .322 I.D. x .38	
22	11023		Deck Link Ass'y. (3 Req'd.)		59	11010		Brake Plate	
23	9721		Pivot Link Assembly		60	12-1329-0000		Casting Carrier Side	
24	11014		Connecting Lift Bracket		61	15-1154-1079		Friction Pad .250 Thick	
25	736-0264		Flat Washer .531 I.D. x .93 O.D.		62	03-1345-0000		Disc Backup	
26	710-201		Hex Hd. Cap Scr. 5/16-18 x .62" Lg.*		63	12-1984-0007		Casting Cam Side	
27	736-219		Belleville Washer .400 I.D. x 1.13 O.D.		64	712-158		Hex Center Locknut 5/16-18 Thd.	
28	714-101		Internal Cotter Pin 1/2" Dia.		65	05-1033-0000		Push Pin	
29	11249		Height Adjustment Knob		66	06-1029-0000		Spring	
30	11027		Handle Stop Bracket Assembly		67	18-1687-0000		Cam Lever	
31	712-429		Hex Inserted Locknut 5/16-18 Thd.		68	15-1154-1049		Friction Pad .450 Thick	
32	735-126		Rubber Washer .33 I.D. x .87 O.D.		69	03-1030-0000		Washer	
33	8118		Grip Finger—Black		70	02-1011-0000		Hex Locknut	
34	11030		Lift Handle R.H.		71	747-107		Brake Rod .25 Dia. x 24.12" Lg.	
35	11029		Handle Pivot Bracket		72	761-130		Disc Brake Assembly—Comp.	
36	11032		Lift Handle Bracket Assembly		73	710-198		Hex Sems Scr. 5/16-18 x .75" Lg.* (Four Speed)	
37	736-233		Wave Washer .660 I.D. x .82 O.D.		74	732-191		Spring (Idler) .75 O.D. x 11.0" Lg.	
38	748-201		Spacer .635 I.D. x .880 O.D. x .57" Lg.		75	710-134		Carriage Bolt 1/4-20 x .62" Lg.*	
39	714-115		Cotter Pin 1/8" Dia. x 1.00" Lg.*		76	761-147		Blade Brake Assembly (133-390 & 395)	
40	736-192		Flat Washer .531 I.D. x .93 O.D.		77	736-329		Spring Lockwasher 1/4" Scr.*	
41	11025		Lockout Link Assembly		78	712-287		Hex Nut 1/4-20 Thd.*	
42	11545		Shift Lever (Four Speed)		79	712-116		Hex Inserted Locknut 3/8-24 Thd.	
43	11548		Shift Lever Bracket Assembly (Four Speed)		80	11059—458		Idler Bracket Assembly	
44			Four Speed Transmission—Complete		81	11061		Clutch Rod	
45	735-126		Rubber Washer .33 I.D. x .87 O.D. (Four Speed)		82	11037		Clutch Pedal Assembly	
						10614		Pedal Pad—Vinyl	

When ordering replacement tires include all the information on the side wall of the tire such as the size and brand name, as shown on parts list.

*For faster service obtain standard nuts, bolts and washers locally. If these items cannot be obtained locally order by part number and size

(458—Arctic Blue Flake)

When ordering parts if color or finish is important, use the appropriate color code shown at the left. For example Ref. No. 80 11059—458 would be a blue idler bracket.

The engine is not under warranty by the mower manufacturer. If repair or service is needed on the engine, please contact your nearest authorized engine service outlet. Check the "Yellow Pages" of your telephone book under "Engine—Gasoline."



PARTS LIST (CONTINUED)

REF. NO.	PART NO.	COLOR CODE	DESCRIPTION	NEW PART	REF. NO.	PART NO.	COLOR CODE	DESCRIPTION	NEW PART
83	11057		<i>Interch.</i> Parking Brake—Lever Ass'y. L.H.		117	10769		Blade Adapter Kit	
84	710-442		Hex Hd. Cap Scr. 5/16-18 x 1.50" Lg.*		118	742-118		15 inch Blade (2-Req'd.)	
86	10480		Engine Belt Guard Ass'y.		119	712-123		Hex Nut 5/16-24 Thd.*	
87	710-151		Hex Hd. Cap Scr. 3/8-24 x 2.00" Lg.*		120	710-117		Hex Hd. Cap Scr. 5/16-24 x 1.00" Lg. Heat Treated	
88	710-259		Hex Sems Scr. 5/16-18 x .62" Lg.*		121	736-217		Spring Lockwasher 3/8" Scr. Heavy Duty	
89	732-245		Brake Spring		122	710-459		Hex Hd. Cap Scr. 3/8-24 x 1.50" Lg. Heat Treated	
90	11036		Brake Pedal Assembly		123	11388		30 inch Deck Assembly	
	10614		Pedal Pad—Vinyl		124	732-191		Deck Spring	
91	726-121		Push Cap .25 Dia.		125	732-261		Torsion Spring	
92	11056		Parking Brake—Lever Ass'y. R.H.		126	726-106		Push Nut 1/4" Rod	
93	10426		Belt Keeper Assembly		127	11399		Adapter Plate Assembly	
94	738-213		Shoulder Bolt .498 Dia. x 1.45		128	11574		Chute Cover Assembly	
95	11039		Pedal "U"-Bracket Ass'y. (1 Req'd. on 25" Deck)		129	738-119		Axle Bolt .625 Dia. x 1.75	
96	726-100		Push Nut 3/8" Dia. Rod		130	734-225		Wheel Assembly Complete 6.0" Dia.	
97	714-129		#4 Hi-Pro Key 3/32 x 5/8" Dia. (Four Speed)		131	710-195		Hex Hd. Cap Scr. 1/4-28 x .62" Lg. (3-Req'd.)	
98	756-175		Transmission Split Pulley .50 I.D.		132	10072		Belt Guard R.H.—Deck	
99	756-116		"V"-Idler 3.06 O.D.		133	9322		Blade Brake—Disc	
100	756-178		"P"-Flat Idler 2.75 O.D.		134	11236		Wheel Bracket Ass'y. R.H.	
101	756-173		Two Step Engine Pulley		135	710-151		Hex Hd. Cap Scr. 3/8-24 x 2.00" Lg.*	
102	756-124		Deck Pulley 4.75 O.D. (2-Req'd.)		136	11237		Wheel Bracket Assembly L.H.	
103	754-164		"V"-Belt 1/2 x 63" Lg. (Drive Belt)		137	10949		Spring Lever Assembly with Knob	
104	754-167		"V"-Belt 21/32 x 64" Lg. (Blade Belt)		138	710-289		Hex Hd. Cap Scr. 1/4-20 x .50" Lg.*	
105	736-921		Spring Lockwasher 1/2" Scr.*		139	712-287		Hex Nut 1/4-20 Thd.*	
106	712-922		Hex Jam Nut 1/2-20 Thd.		140	9321		Blade Spindle Ass'y. Complete	
107	712-242		Hex Jam Nut 5/8-11 Thd.		141	11024		Deck Link	
108	736-158		Spring Lockwasher 3/8" Scr.*		142	711-332		Lift Bracket Pin	
109	711-572		Step Washer for Engine Pulley		143	751-124		Muffler Extension Assembly	N
110	8253		Housing—Bearing		144	—		Lo-Tone Muffler	
111	741-919		Ball Bearing .787 I.D. x 1.85 O.D.		145	710-258		(Order from Briggs & Stratton)	
112	9164		Deck Reinforcement Plate		146	11858		Hex Hd. Cap Scr. 1/4-20 x .62" Lg.*	N
113	10071		Belt Guard L.H.—Deck		147	11913		Muffler Bracket	N
114	711-255		Blade Spindle		148	11633		30" Deck Assembly Complete	N
115	10937		Wheel Pivot Bar					Chute Cove Ass'y. Comp.	
116	714-365		#6 Hi-Pro Key 5/32 x 5/8" Dia.					(Includes Ref. No's. 125, 126, 127, 128 and 131)	N

149 714-507 COVER P.N

When ordering replacement tires include all the information on the side wall of the tire such as the size and brand name. as shown on parts list.

*For faster service obtain standard nuts, bolts and washers locally. If these items cannot be obtained locally order by part number and size.

(458—Arctic Blue Flake) When ordering parts if color or finish is important, use the appropriate color code shown at the left. For example Ref. No. 80 11059—458 would be a blue idler bracket.

The engine is not under warranty by the mower manufacturer. If repairs or service is needed on the engine, please contact your nearest authorized engine service outlet. Check the "Yellow Pages" of your telephone book under "Engines—Gasoline."



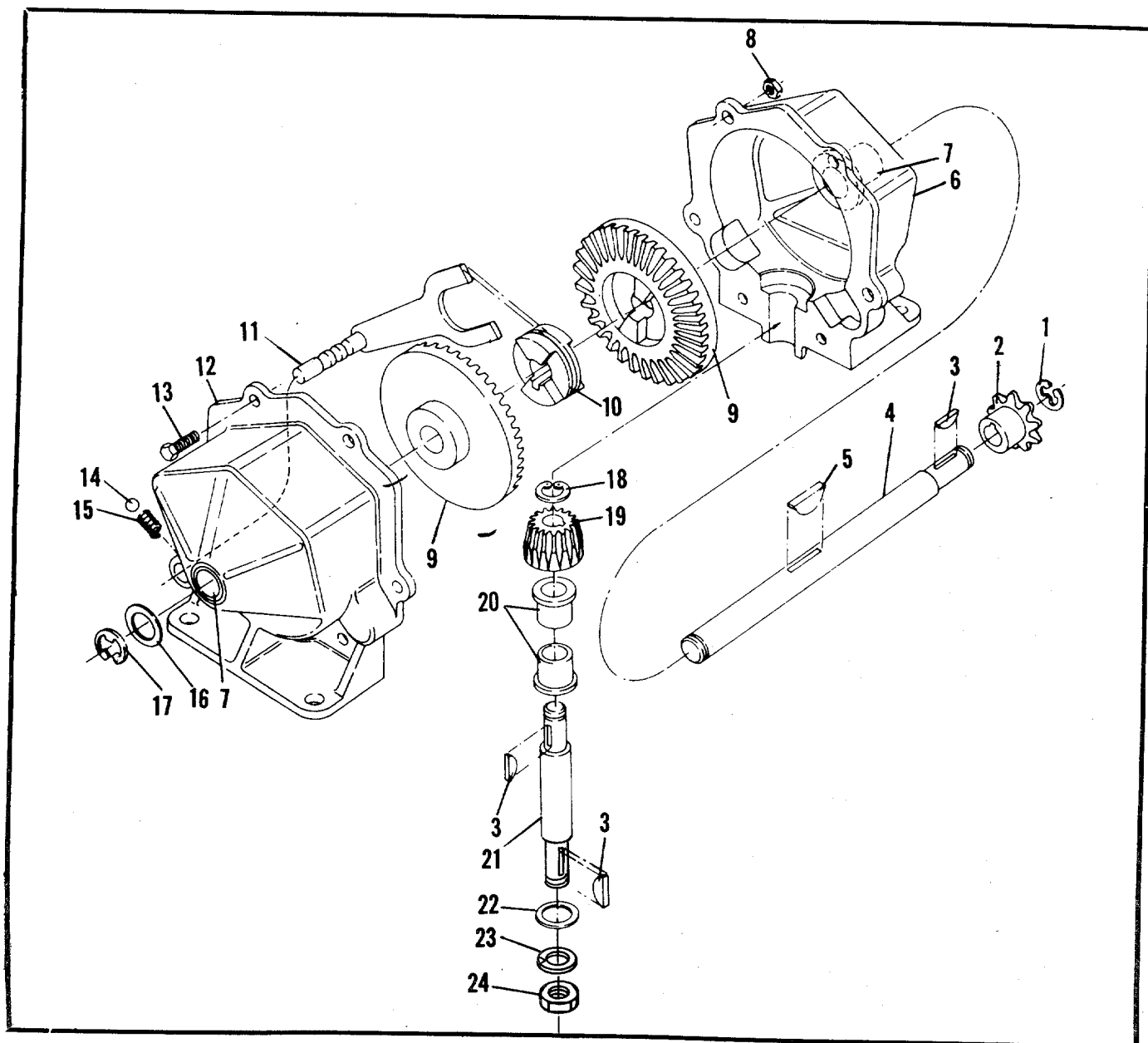
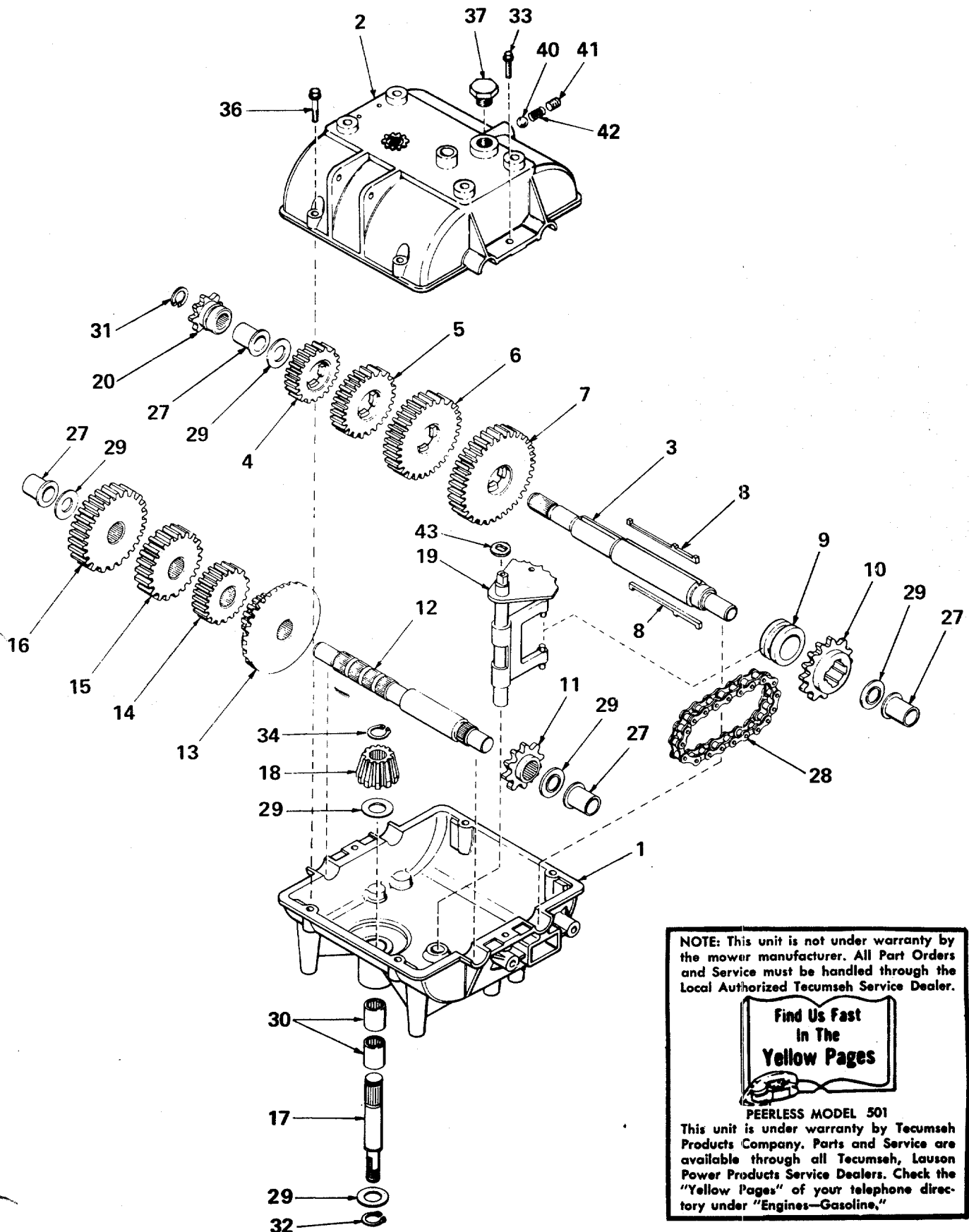


FIGURE 30. SINGLE SPEED TRANSMISSION PART NO. 717-222

REF. NO.	PART NO.	COLOR CODE	DESCRIPTION	NEW PART	REF. NO.	PART NO.	COLOR CODE	DESCRIPTION	NEW PART
1	716-104		Snap Ring		13	710-195		Hex Hd. Cap Scr. ¼-28 x .62*	
2	748-204		Sprocket 8T #41		14	741-862		Detent Ball	
3	714-129		Key Hi-Pro #4		15	732-863		Detent Spring	
4	711-854		Shaft Output		16	736-116		Washer	
5	714-126		Key Hi-Pro #606 (Hardened)		17	716-106		E-ring	
6	717-123		Housing Half		18	716-865		Snap Ring #3100-50	
7	748-855		Bearing		19	748-866		Bevel Pinion	
8	712-117		Locknut ¼-28 Thd.*		20	748-867		Bearing	
9	748-856		Bevel Gear		21	738-159		Pinion Shaft	
10	748-857		Clutch Collar		22	736-192		Washer	
11	8583		Detent Shaft Assembly		23	736-921		Lockwasher ½"	
12	717-124		Housing Half with Detent Hole		24	712-922		Hex Jam Nut ½-20 Thd.*	
					25	737-120		Grease—High Temp. 450°F.	N

*For faster service obtain standard nuts, bolts and washers locally. If these items cannot be obtained locally order by part number and size as shown on parts list.

REVERSING TRANSMISSION (PEERLESS 501)



NOTE: This unit is not under warranty by the mower manufacturer. All Part Orders and Service must be handled through the Local Authorized Tecumseh Service Dealer.



PEERLESS MODEL 501
This unit is under warranty by Tecumseh Products Company. Parts and Service are available through all Tecumseh, Lauson Power Products Service Dealers. Check the "Yellow Pages" of your telephone directory under "Engines—Gasoline."

FIGURE 31. FOUR SPEED TRANSMISSION PART NO. PEERLESS 501

PARTS LIST FOR FIGURE 31. FOUR SPEED TRANSMISSION

Ref. No.	Part No.	Description
1	770061	Case, Transmission
2	772070	Cover, Transmission
3	776139	Shaft, Output and Brake
4	778105	Gear, Spur (20 teeth)
5	778106	Gear, Spur (25 teeth)
6	778107	Gear, Spur (30 teeth)
7	778108	Gear, Spur (35 teeth)
8	792071	Key
9	784216	Collar, Shift
10	786060	Sprocket (14 teeth)
11	786061	Sprocket (10 teeth)
12	776134	Shaft, Counter
13	778109	Gear, Bevel (42 tooth & 15 tooth spur gear)
14	778110	Gear, Spur (20 teeth)
15	778111	Gear, Spur (25 teeth)
16	778112	Gear, Spur (30 teeth)
17	776140	Shaft, Input
18	778113	Bevel Pinion, Input
19	784217	Rod and Fork Assembly, Shifter
20	786050	Sprocket (8 teeth)
27	780105	Bushing, Flanged
28	786162	Chain, Roller (#41 chain, 22 links)
29	780072	Race, Thrust
30	780106	Bearing, Needle
31	792072	Ring, Retaining
32	792035	Ring, Retaining
33	792059	Screw, 1/4-20 x 3/4 Tap Tite
34	788040	Ring, Retaining
36	792073	Screw, 1/4-20 x 1 1/4 Tap Tite
37	792074	Plug
40	792077	Ball, 5/16" Steel
41	792078	Screw, 3/8-16 x 3/8 Set
42	792079	Spring
43	792083	Washer

NOTE: This unit is not under warranty by the mower manufacturer. All Part Orders and Service must be handled through the Local Authorized Tecumseh Service Dealer.



PEERLESS MODEL 501

This unit is under warranty by Tecumseh Products Company. Parts and Service are available through all Tecumseh, Lauson Power Products Service Dealers. Check the "Yellow Pages" of your telephone directory under "Engines—Gasoline."

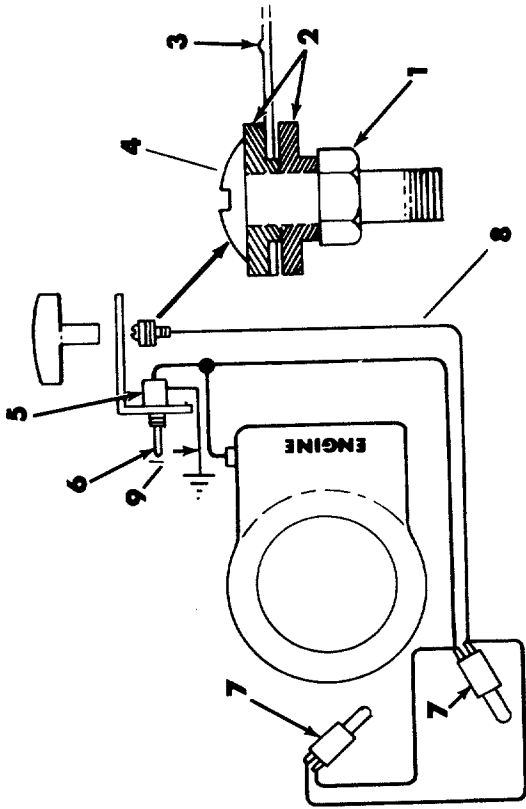


FIGURE 32. ELECTRICAL DIAGRAM FOR RECOIL START

PARTS LIST FOR FIGURE 32. ELECTRICAL DIAGRAM FOR RECOIL START ENGINE

REF. NO.	PART NO.	COLOR CODE	DESCRIPTION	NEW PART
1	712-121		Hex Nut #10-24 thd.*	
2	736-338		Fiber Washer	
3	732-257		Switch Spring	
4	710-425		Truss Head Scr. #10-24 thd.*	
5	725-266		Ignition Switch	
6	725-128		Key Only	
7	725-269		Safety Switch—Red	
8	725-272		Wire Harness	
9	725-297		Ground Wire	

- (1) 8821 - Bag hold down
 (2) 711-222 - studs
 (2) 712-113 wing nuts

*For faster service obtain standard nuts, bolts, and washers locally. If these items cannot be obtained locally, order by part number and size as shown on the parts list.

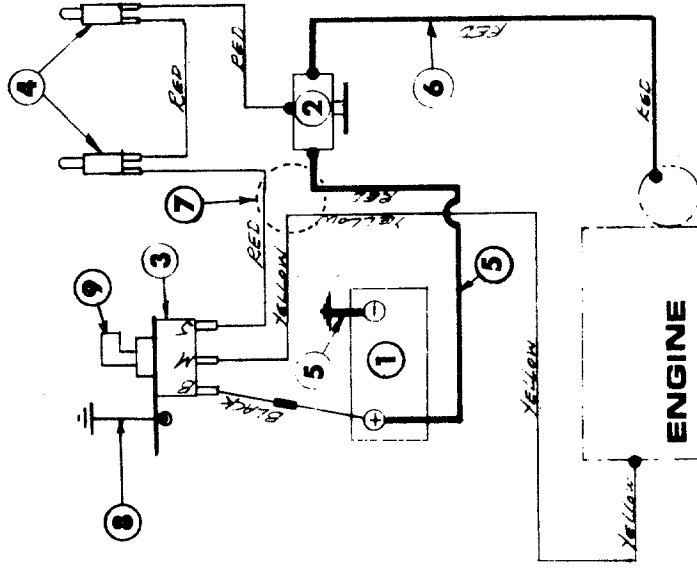


FIGURE 33. ELECTRICAL DIAGRAM FOR ELECTRIC START ENGINE

PARTS LIST FOR FIGURE 33. ELECTRICAL DIAGRAM FOR ELECTRIC START ENGINE

REF. NO.	PART NO.	COLOR CODE	DESCRIPTION	NEW PART
1	725-117		Battery	
2	725-270		Solenoid	
3	725-267		Key Switch	
4	725-268		Safety Switch—Black	
5	725-150		Electric Wire	
6	725-221		Wire Harness	
7	725-282		Ground Wire	
8	725-297		Ignition Key	
9	725-201		Battery Charger (not shown)	
10	725-156			

BATTERY WARRANTY CERTIFICATE

The following general warranty policy applies to all batteries sold by IBMA members using this warranty. The nationwide warranty applies only to batteries bearing the IBMA seal of approval.

All new batteries sold by IBMA members carry a warranty against faulty material or workmanship for 90 days from date of purchase. A faulty battery is to be adjusted, repaired or replaced with a new battery by an IBMA member, jobber or dealer only, or the warranty becomes void. An IBMA type battery that is faulty within the 90 day period is to be repaired or replaced with a new battery F.O.B. any IBMA factory supplier or any IBMA authorized dealer, without charge.

Your battery carries a further warranty on a pro-rata adjustment basis covering the number of months determined by the class of service and type of battery. In determining the exchange cost of a new battery, charges will be made for months of service used and the warranty is valid to the original purchaser only.

IBMA approved factory suppliers, as well as all IBMA authorized dealers, are to honor this Warranty. If your IBMA approved battery carries the IBMA seal of approval, this Warranty is to be honored by dealers handling IBMA approved batteries everywhere. (Independent Battery Manufacturers Association, Inc.)

Failures in service that are caused by fire, collision, freezing, abuse, faulty electrical equipment or the use of a battery of a group size smaller or specifications lower than the original battery are not covered by this policy.

BATTERY MANUFACTURER MEMBERSHIP LIST

ALABAMA Birmingham Southern Bty. Yocam Batteries Mobile Yocam Batteries Montgomery Ebco Battery	FLORIDA Fort Lauderdale Florida Bty. Hialeah East Penn Mfg. Jacksonville Tropex Batteries Yocam Batteries Miami Tropex Batteries Yocam Batteries Orlando Yocam Batteries Pensacola Yocam Batteries St. Petersburg Electro Battery Co. Tampa Bilt-Rite Bty. Mfg. Contract Bty. Mfg. DeSoto Bty. & Elec. Tropex Batteries Yocam Batteries	ILLINOIS Bellefonte Bell City Bty. Mfg. Chicago Illinois Bty. Mfg. Universal Bty. Volta Bty. Corp. Peoria Red Diamond Bty. INDIANA Muncie Stout Storage Bty. IOWA Corydon Voltmaster Council Bluffs Reliance Bty. Prod. Des Moines Voltmaster KANSAS Kansas City American Batteries Contract Bty. Mfg. KENTUCKY Whitesburg Electro-Lite Bty. LOUISIANA New Orleans Central Bty. Reliable Bty.	MARYLAND Baltimore East Penn Mfg. MASSACHUSETTS Watertown Atlantic Bty. MICHIGAN Detroit Batteries Mfg. Flint ABC Batteries Holly Detroit Battery Madison Heights C & W Lektra Warren G & M Battery MINNESOTA St. Paul Standard Storage Bty. MISSISSIPPI Florence Contract Bty. Mfg. Jackson Central Bty. New Albany Laher Bty. Prod. MISSOURI Joplin Lead Products	Maryland Heights Electro Bty. Mfg. Sikeston Electro Bty. NEW JERSEY Atlantic City Landis Battery NEW MEXICO Albuquerque Sandia Bty. Mfg. NEW YORK Buffalo East Penn Mfg. Lockport Great Lakes Battery NORTH CAROLINA Charlotte Yocam Batteries Thomasville East Penn Mfg. OHIO Akron Crown Battery Cincinnati Moore Battery Cleveland Crown Battery New Castle Bty. Columbus Crown Battery Fremont Crown Battery	OREGON Beaverton Western Bty., Inc. Portland Laher Bty. Prod. PENNSYLVANIA Altoona East Penn Mfg. Erie New Castle Bty. Lancaster Lancaster Bty. Lyon Station East Penn Mfg. New Castle New Castle Bty. Philadelphia East Penn Mfg. Pittsburgh Simon Bty. & Res. Geidel Bty. Div. RHODE ISLAND Providence Pilot Mfg., Inc. SOUTH CAROLINA Columbia Yocam Batteries TENNESSEE Chattanooga Electro-Lite Bty. Knoxville Southern Bty.	Memphis Central Battery Laher Bty. Prod. Southern Bty. Nashville Electro-Lite Bty. Southern Bty. TEXAS Dallas Continental Bty. Reliable Battery El Paso El Paso Bty. Houston Texford Bty. Co. Reliable Battery San Antonio Reliable Battery UTAH Salt Lake City Laher Bty. Prod. VIRGINIA Arlington Express Bty. Div. Leeth Bros. Lynchburg Hydrate Battery WASHINGTON Seattle Laher Bty. Prod. Spokane Laher Bty. Prod. CANADA Vancouver, B. C. Industrial Bty. & Supply
---	--	--	--	---	---	---

WARRANTY

For one year from date of purchase, MTD Products Inc. will replace for the original purchaser, free of charge, F.O.B. factory or authorized service firm, any part or parts found to be defective in material or workmanship. All transportation charges on parts submitted for replacement under this warranty must be paid by the purchaser. This warranty does not include replacement of parts which become inoperative through misuse, excessive use, accident, neglect, improper maintenance or alterations by unauthorized persons. This warranty does not include the engine, motor, battery, battery charger or any component parts thereof. For service on these units refer to the applicable manufacturer's warranty.

The above warranty will apply only to the original owner and will be effective only if the warranty card has been properly processed. It will not apply where the unit has been used commercially.

Warranty service is available through your local authorized service dealer or distributor. **UNDER NO CIRCUMSTANCES WILL THE RETURN OF A COMPLETE UNIT BE ACCEPTED BY THE FACTORY UNLESS PRIOR WRITTEN PERMISSION HAS BEEN EXTENDED.**

PARTS INFORMATION

DEFECTIVE OR MISSING PARTS must be reported to the factory immediately. Such claims must include your model number and date of purchase.

MOWER, TILLER, SNOW THROWER, TRACTOR, TRAIL BIKE AND MUD BUG PARTS

Mower, tiller, snow thrower, tractor, trail bike and mud bug parts are available through the authorized service firms listed below. All orders should specify the model number of your unit, parts numbers, de-

scription of parts and the quantity of each part required.

BRIGGS & STRATTON, TECUMSEH AND PEERLESS PARTS AND SERVICE

Briggs & Stratton, Tecumseh and Peerless parts and service should be handled by your nearest authorized engine service firm. Check the yellow pages of your telephone directory under the listing *Engines - Gasoline*, Briggs & Stratton or Tecumseh Lauson - Power Products.

A 1 Engine & Mower Co.

327 East 9th Street
Salt Lake City, Utah 84102

American Electric Ignition Co.

124 N.W. 8th Street
Oklahoma City, Oklahoma 73102

Auto Electric & Carburetor Co.

2625 4th Avenue, S.
P. O. Box 1948
Birmingham, Alabama 35233

Automotive Equipment Service Co.

3117 Holmes Street
Kansas City, Missouri 64109

Bailey's Rebuild Inc.

1325 E. Madison Street
Seattle, Washington 98102

Brown Equipment Distributor Inc.

110 Beech Street
Corydon, Indiana 47112

Bullard Supply

2409 Commerce Street
Houston, Texas 77003

Catto & Putty, Inc.

P. O. Box 2408
510 Soledad Street
San Antonio, Texas 78205

Center Supply Company

6867 New Hampshire Avenue
Takoma Park, Maryland 20012

Charles B. Wright Co.

309 4th Avenue, South
Nashville, Tennessee 37201

W. B. Clements

400 Salem Avenue
Roanoke, Virginia 24016

Morton B. Collins Co.

300 Birnie Avenue
Springfield, Massachusetts 01107

Dixie Sales Company

P. O. Box 1408
327 Battleground Avenue
Greensboro, North Carolina 27402

East Point Cycle & Key Shop

1617 Whiteway
East Point, Georgia 30044

Gamble Distributors

West End Avenue
Carthage, New York 13619

Garden Equipment Co., Inc.

6600 Cherry Avenue
Long Beach, California 90805

Henzler, Inc.

2015 Lemay Ferry Road
St. Louis, Missouri 63125

Frank E. Ives & Son

1101 Lincoln Avenue
Prospect Park, Pennsylvania 19076

J. W. Jewett Co.

981 Folsom Street
San Francisco, California 94107

Kenton Supply

8216 North Denver Avenue
Portland, Oregon 97217

Kimber's Inc.

115 W. Geddes St.
Syracuse, New York 13204

The Lawnmower Shop

1340 El Camino Real
San Carlos, California 94070

Marr Brothers

423 E. Jefferson
Dallas, Texas 75203

Mathews Auto Electric Co.

420 East 2nd Street
Tulsa, Oklahoma 74120

McClure Lawn & Garden Supply

1114 Lexington Avenue
Mansfield, Ohio 44907

Memphis Cycle & Supply Co.

421 Monroe Avenue
Memphis Tennessee 38103

Moz-All of Florida, Inc.

355 Greco Avenue
Coral Gables, Florida 33146

National Central, Div. of

Joe Sterling, Inc.
Drawer "D" 687 Seville Rd.
Wadsworth, Ohio 44281

Power Equipment Distributor

36463 So. Gratiot Avenue
Mt. Clemens, Michigan 48043

Parts & Sales Inc.

2101 Industrial Pkwy.
Elkhart, Indiana 46514

Parts & Sales Inc.

335 West St. Charles Road
Villa Park, Illinois 60181

Power Lawn & Garden Equip. Co.

2551-2571 J. F. Kennedy Road
Dubuque, Iowa 52001

Raub Supply Company

James & Mulberry Sts.
Lancaster, Pennsylvania 17604

Radco Distributors

2403 Market Street
P. O. Box 3216
Jacksonville, Florida 32206

Richmond Battery & Ignition

P. O. Box 25369 - 957 Myers St.
Richmond, Virginia 23260

Smith Hardware Company

515 N. George Street
Goldsboro, North Carolina 27530

South Denver Lawn Equip. Co.

527 West Evans
Denver, Colorado 80223

Suhren Engine

8330 Earhart Blvd.
New Orleans, Louisiana 70118

Sutton's Lawn Mower Shop

Route 4, Box 343
North Little Rock, Arkansas 72117

Warner Equipment

7520 Lyndale Avenue, So.
Minneapolis, Minnesota 55423

WARRANTY PARTS AND SERVICE POLICY

The purpose of warranty is to protect the customer from defects in material and workmanship, defects which are not detected at the time of manufacture.

Our aim is to build into our product quality and reliability. Considerable emphasis is placed on quality control in order to assure our customer of satisfactory product performance. To achieve this goal, it is necessary to gain the cooperation of all concerned, MTD, our sales force and our customers.

MTD's responsibility is to build a quality product and to back up that product. MTD must build this quality product at a competitive price. This cannot be achieved without production in quantity. Quantity production is mass production. In mass production it is always possible for undetected defects to be present when the product reaches the customer. Our warranty is extended to assure the customer that any such defects will be corrected.

Use and maintenance are the responsibility of the customer. MTD cannot assume responsibility for conditions over which it has no control. MTD's responsibility does not cover misuse, excessive use, accident neglect, improper maintenance or alterations by unauthorized persons. Satisfactory product performance can only result when a manufacturer provides and backs up a quality product and the customer follows through with proper use and proper maintenance of that product. When both the manufacturer and the customer recognizes and assumes his responsibility, satisfactory product performance and customer satisfaction are assured.