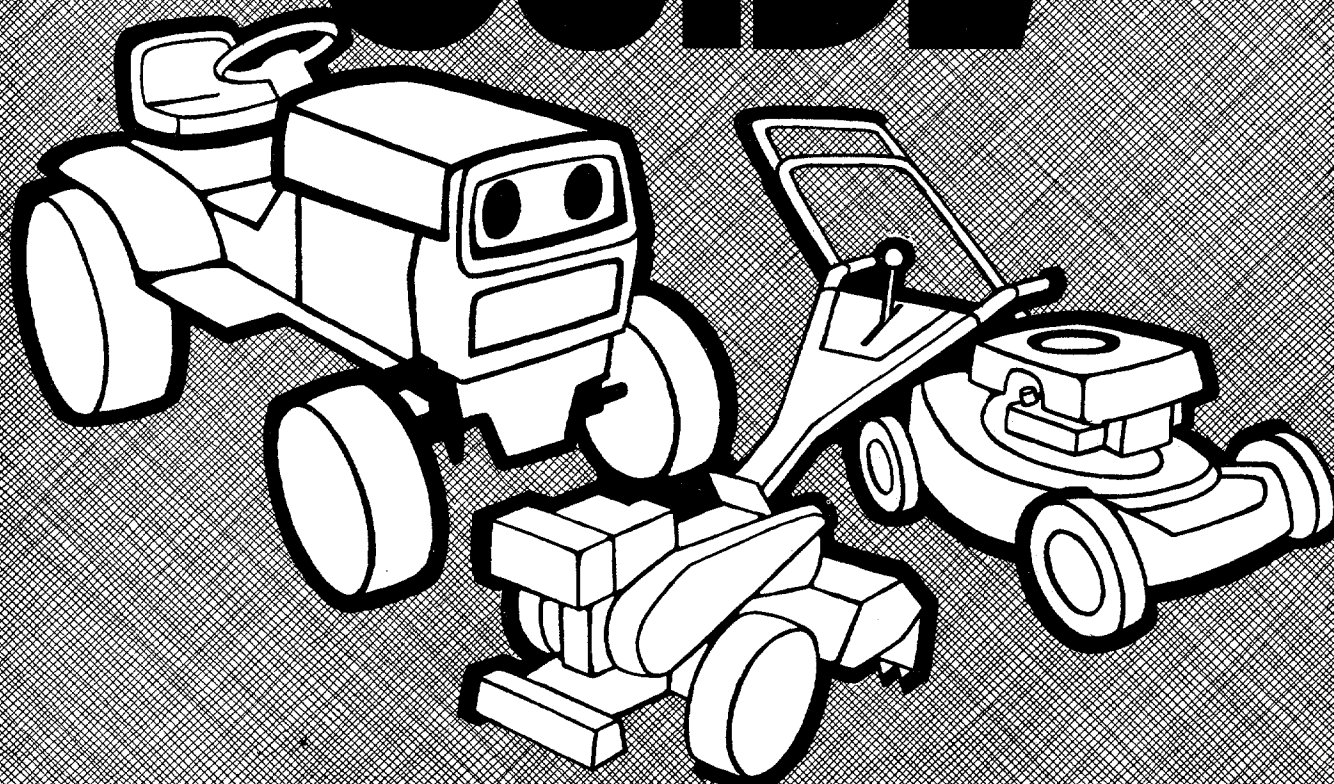


# OWNER'S GUIDE



**ASSEMBLY • OPERATION • MAINTENANCE • PARTS**

## **26" RIDING MOWER**

**Important:**

**Read Safety Rules and  
Instructions Carefully**

**Model Number  
131-380A**

Thank you for purchasing an  
American built product.

# INDEX

Safe Operation Practices.....	3	Off-Season Storage.....	14
Assembly Instructions.....	4	Trouble Shooting Chart.....	15
Controls.....	5	Repair Parts.....	16-21
Operation.....	7	Transmission Repair Parts.....	22
Adjustments.....	8	Differential Repair Parts.....	23
Lubrication.....	10	Electrical Diagram.....	24
Maintenance.....	11	Parts Information.....	Back Cover

## LIMITED WARRANTY

For one year from the date of original retail purchase, MTD PRODUCTS INC will either repair or replace, at its option, free of charge, F.O.B. factory or authorized service firm, any part or parts found to be defective in material or workmanship. Transportation charges for any parts submitted for replacement under this warranty must be paid by the purchaser unless such return is requested by MTD PRODUCTS INC.

This warranty will not apply to any part which has become inoperative due to misuse, excessive use, accident, neglect, improper maintenance, alterations, or unless the unit has been operated and maintained in accordance with the instructions furnished. This warranty does not apply to the engine, motor, battery, battery charger or component parts thereof. Please refer to the applicable manufacturer's warranty on these items.

This warranty will not apply where the unit has been used commercially.

Warranty service is available through your local authorized service dealer or distributor. If you do not know the dealer or distributor in your area, please write to the Customer Service Department of MTD.

The return of a complete unit will not be accepted by the factory unless prior written permission has been extended by MTD.

This warranty gives you specific legal rights. You may also have other rights which vary from state to state.



**WARNING**

### TO PURCHASERS OF INTERNAL COMBUSTION ENGINE EQUIPPED MACHINERY OR DEVICES IN THE STATE OF CALIFORNIA

The equipment which you have just purchased does not have a spark arrester. If this equipment is used on any forest covered land, brush covered land, or grass covered unimproved land in the State of California, before using on such land, the California law requires that a spark arrester be provided. In addition, spark arrester is required by law to be in effective working order. The spark arrester must be attached to the exhaust system and comply with Section 4442 of the California Public Resources Code.



## WARNING

To reduce the potential for any injury, comply with the following safety instructions. Failure to comply with the instructions may result in personal injury.

# SAFE OPERATION PRACTICES FOR WALK-BEHIND MOWERS

## TRAINING

1. It is suggested that this manual be read in its entirety before attempting to assemble or operate this unit. Keep this manual in a safe place for future reference and for ordering replacement parts.
2. Your rotary mower is a precision piece of power equipment, not a plaything. Therefore, exercise extreme caution at all times.
3. Read this Owner's Manual carefully. Be thoroughly familiar with the controls and the proper use of the equipment.
4. Never allow children to operate a power mower. Only persons well acquainted with these rules of safe operation should be allowed to use your mower.
5. Keep the area of operation clear of all persons, particularly small children and pets. Stop engine when they are in the vicinity of your mower. Although the area of operation should be completely cleared of foreign objects, a small object may have been overlooked and could be accidentally thrown by the mower in any direction and cause injury.

## PREPARATION

1. Thoroughly inspect the area where the equipment is to be used. Remove all stones, sticks, wire, bones and other foreign objects which could be picked up and thrown by the mower in any direction and cause injury.
2. Do not operate equipment when barefoot or wearing open sandals. Always wear substantial footwear.
3. Do not wear loose fitting clothing that could get caught on the mower.
4. Check the fuel before starting the engine. Gasoline is an extremely flammable fuel. Do not fill the gasoline tank indoors, while the engine is running, or while the engine is still hot. Wipe off any spilled gasoline before starting the engine as it may cause a fire or explosion.
5. Disengage the self-propelled mechanism or drive clutch on units so equipped before starting the engine.
6. Never attempt to make a wheel or cutting height adjustment while the engine is running.
7. Mow only in daylight or in good artificial light.
8. Never operate the equipment in wet grass. Always be sure of your footing. Keep a firm hold on the handle and walk, never run.

## OPERATION

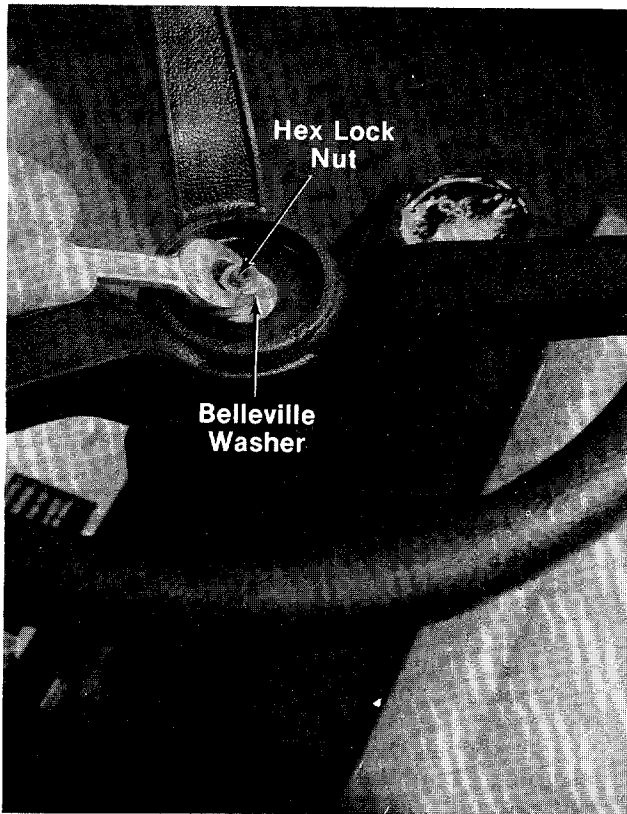
1. Do not change the engine governor settings or overspeed the engine. Excessive engine speeds are dangerous.
2. Do not put hands or feet near or under rotating parts. Keep clear of the discharge opening at all times as the rotating blade can cause injury.
3. Stop the blade when crossing gravel drives, walks or roads.
4. After striking a foreign object, stop the

engine, remove the wire from the spark plug, and thoroughly inspect the mower for any damage. Repair the damage before restarting and operating the mower.

5. If the equipment should start to vibrate abnormally, stop the engine and check immediately for the cause. Vibration is generally a warning of trouble.
6. Stop the engine whenever you leave the mower, before cleaning the mower housing, and when making any repairs or inspections.
7. When cleaning, repairing or inspecting, make certain the blade and all moving parts have stopped. Disconnect the spark plug wire, and keep the wire away from the plug to prevent accidental starting.
8. Before attempting to unclog the mower or discharge chute, stop the engine and be sure the blade has stopped completely. The cutting blade continues to rotate for a few seconds after the engine is shut off. Never place any part of the body in the blade area until you are sure the blade has stopped rotating. Disconnect the spark plug wire and keep the wire away from the plug to prevent accidental starting.
9. Do not run the engine indoors.
10. Shut the engine off and wait until the blade comes to a complete stop before removing the grass catcher or unclogging chute.
11. Mow across the face of slopes, never up-and-down. Exercise extreme caution when changing direction on slopes. Do not mow excessively steep slopes.
12. Always disconnect electric mowers (line operated) before cleaning, repairing or adjusting.
13. Never operate mower without proper guards, plates or other safety protective devices in place.
14. Keep washout ports and other mower-housing service openings closed when mowing.
15. **DO NOT OPERATE** this mower with the chute doors open, unless the complete grass catcher is properly mounted on the mower.

## MAINTENANCE AND STORAGE

1. Check the blade and engine mounting bolts at frequent intervals for proper tightness.
2. Keep all nuts, bolts, and screws tight to be sure the equipment is in safe working condition.
3. Never store the equipment with gasoline in the tank inside of a building where fumes may reach an open flame or spark. Allow the engine to cool before storing in any enclosure.
4. To reduce fire hazard, keep the engine free of grass, leaves, or excessive grease.
5. Check the grass catcher bag frequently for wear or deterioration. For safety protection, replace only with new bag meeting original equipment specifications.



**FIGURE 1.**

## ASSEMBLY

### ➡ NOTE

This unit is shipped WITHOUT GASOLINE or OIL. After assembly, see operating section of this manual for proper fuel and engine oil recommendations.

#### List of Contents in Hardware Pack:

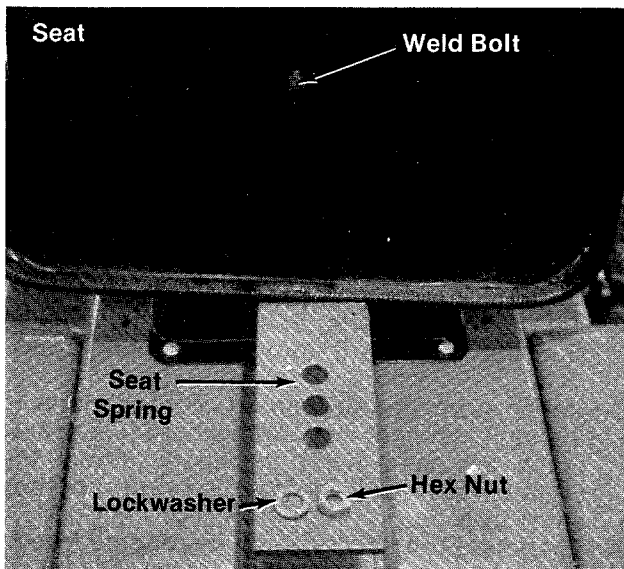
- (1) Steering Wheel Cap
- (1) Hex Center Lock Nut 5/16-18 Thread
- (1) Belleville Washer
- (1) Flat Washer
- (1) Hex Nut 1/2-13 Thread
- (1) Lock Washer 1/2" I.D.

### ➡ NOTE

Reference to right hand or left hand side of machine is from the driver's seat facing forward.

#### ← Attaching Steering Wheel

1. Place the wave washer and then the flat washer over the steering column which extends through the dash.
2. Place the steering wheel over the steering column by lining up the flats on the steering column with the flats in the steering wheel. See figure 1.
3. Place the belleville washer with the cupped side down over the steering column and secure with the hex lock nut.
4. Place the cap over the center of the steering wheel and seat it with your hand.



**FIGURE 2.**

#### ← Seat Assembly

Use the hex nut (1/2-13 thread) and lock washer (1/2" I.D.) to attach the seat to the seat spring in one of the three adjustment holes. See figure 2.

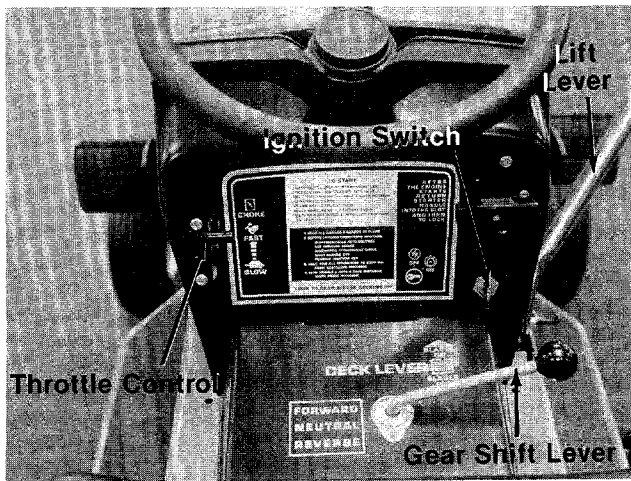


FIGURE 3.

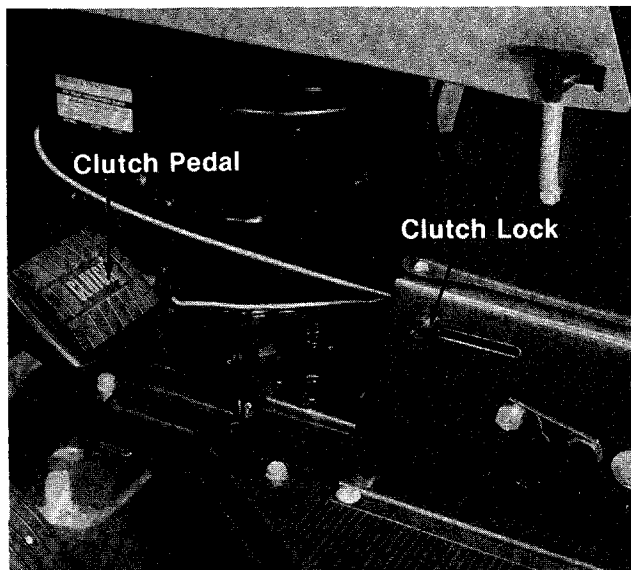


FIGURE 4.

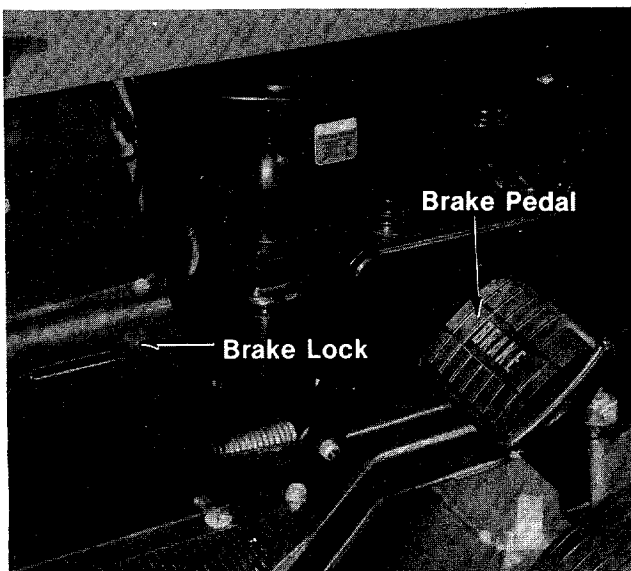


FIGURE 5.

## CONTROLS

### Ignition Switch

The ignition switch is located on the right side of the dashboard. Turn the key to the "START" position to start the engine. When the engine is running leave the key in the "ON" position. To stop the engine turn the key to the "OFF" position. See figure 3.



### CAUTION

Remove the key from the riding mower when the mower is not in use to prevent accidental starting.

### Gear Shift Lever

The reversing transmission has a forward gear, reverse gear and a neutral position. You must depress the clutch pedal when you stop and when you shift from neutral into either forward or reverse gear.



### CAUTION

Do not force the shift lever.

If the gear shift lever does not easily move into either the forward or reverse gear, it may be necessary to release the clutch pedal slightly until the gear shift lever moves easily into gear. See figure 3.

### Clutch Pedal

The clutch pedal is located on the left side of the mower and is used to disengage the drive mechanism. Depressing the clutch pedal will disengage the engine from the drive train. The clutch pedal must be depressed when you come to a stop. See figure 4.

### Clutch Lock

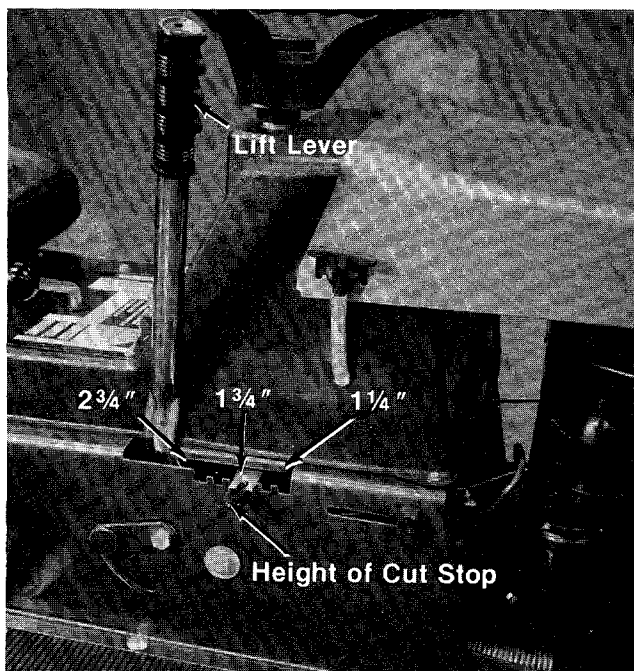
When the clutch pedal is depressed all the way, it can be locked by lifting up the lock button. The pedal will stay depressed. To release, depress the clutch pedal. See figure 4.

### Brake Pedal

The brake pedal is located on the right side of the mower and is operated by depressing it with your right foot. When coming to a complete stop it is necessary to depress both the clutch and the brake pedals. See figure 5.

### Brake Lock

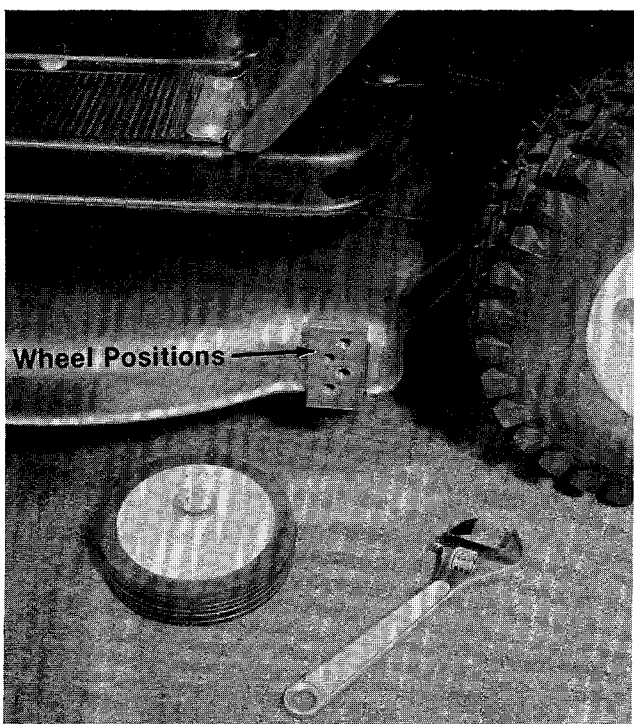
The brake lock is located on the right side of the mower. To lock the brake, depress the brake pedal and lift up the lock button. The pedal will stay depressed. To release, depress the pedal. See figure 5.



#### Lift Lever

The lift lever is used to adjust the cutting deck and engage the drive mechanism. Pulling it all the way back and locking it disengages the blades. The engine will not start unless the lift lever is in the disengaged position. See figure 6.

FIGURE 6.



#### SETTING THE CUTTING HEIGHT

1. Remove the two deck wheels by unscrewing the axle bolts. See figure 7.
2. Using the height of cut stop, set the cutting height lever in the desired position. See figure 6.
3. Move the lift lever forward until it rests against the height of cut stop.
4. Reassemble the deck wheels to one of the four wheel positions on the cutting deck. Use the lowest hole you can without letting the deck wheels touch the ground.

#### NOTE

If you want to let the deck follow the exact contour of the ground, use the two deck wheels to set the cutting height and move the height of cut stop lever all the way forward.

FIGURE 7.

# OPERATION



## CAUTION

1. Keep all shields in place.
2. Before leaving operator's position:
  - a. Shift transmission to neutral
  - b. Set parking brake
  - c. Disengage attachment clutch
  - d. Shut off engine
  - e. Remove ignition key
3. Wait for all movement to stop before servicing machine.
4. Keep people and pets a safe distance away from machine.
5. Look to the rear before backing up.

## TIRE PRESSURE

**FOR SHIPPING PURPOSES, THE TIRES ON YOUR UNIT MAY BE OVER-INFLATED. TIRE PRESSURE SHOULD BE REDUCED BEFORE UNIT IS PUT INTO OPERATION. PRESSURE SHOULD BE APPROXIMATELY 15 P.S.I. EQUAL TIRE PRESSURE SHOULD BE MAINTAINED ON ALL TIRES. MAXIMUM TIRE PRESSURE IS 30 P.S.I.**



## CAUTION

Installation of tire to rim:

1. Lubricate tire beads and rim flanges.
2. Do not exceed 30 P.S.I. when seating beads.
3. Adjust to recommended pressure after beads are sealed.

## STARTING THE ENGINE

1. Be sure the crankcase is filled with oil as recommended in the engine manual. Fill fuel tank with **regular** gasoline.
2. Attach the wire to the spark plug.
3. Depress the brake pedal and lock it down with the brake lock. See figure 5.
4. Depress the clutch pedal and lock it down with the clutch lock. See figure 4.
5. Move the lift and disengagement lever backward to the disengaged position and lock it. See figure 7.



## NOTE

This unit is equipped with a safety interlock system for your protection. The purpose of the safety interlock system is to prevent the engine from cranking or starting unless the clutch pedal is depressed and the lift and disengagement lever is in the disengaged position.



## WARNING

Do not operate the rider if the interlock system is malfunctioning because it is a safety device, designed for protection.

6. Set the throttle control lever in the "CHOKE" position. See figure 3.
7. Turn the ignition key to the "ON" position. Twist the recoil starter handle until it is free and pull it with a quick steady motion. After the engine starts, return the recoil starter handle. Twist it until it locks. See figure 3. Slowly return the throttle to the running position as soon as the engine starts.
8. To stop the engine, turn the ignition key to the "OFF" position. Remove the key when the unit is not in use.

## PUTTING THE LAWN TRACTOR IN MOTION

1. Advance the throttle control from 3/4 to full throttle to prevent strain on the engine and to operate the cutting blades.
2. Depress the clutch pedal so the clutch lock releases.
3. Depress the brake pedal so the brake lock releases.
4. Place the gear shift lever in the "FORWARD" position.
5. Slowly release the clutch pedal.
6. To stop the unit, depress the clutch pedal and the brake pedal.
7. The blade can be engaged either while moving or while standing still. Move the lift and disengagement lever forward slowly until the blade is running.

## STOPPING

**Engine**—Turn the ignition key to the left to the "OFF" position.



**Lawn Tractor**—Depress the clutch and brake pedals.

**Blades**—Move the lift and disengagement lever all the way to the rear and lock it.



### IMPORTANT

After striking a foreign object, stop the engine. Remove wire from spark plug, thoroughly inspect the mower for any damage, and repair the damage before restarting and operating the mower.

GRASS CATCHER Model No. 191-015A is available as optional equipment for the mower shown in this manual.



### WARNING

The mower should not be operated without the entire grass catcher or chute deflector in place.



### NOTE

Under normal usage bag material is subject to wear, and should be checked periodically. Be sure any replacement bag complies with the mower manufacturer's recommendations.

For replacement bags, use only factory authorized replacement bag No. 764-0121.

## ADJUSTMENTS



### CAUTION

Do not at any time make any adjustment to lawn mower without first stopping engine and disconnecting spark plug wire.

### BRAKE ADJUSTMENT

During normal operation of this machine, the brakes are subject to wear and will require periodic examination and adjustment.

The disc brake assembly is located on the rear axle. Before adjusting the brake, it is necessary to loosen the jam nut on the center stud. To adjust, tighten the lock nut one half turn and then test the brakes. Repeat if necessary. Tighten the jam nut. See figure 8.

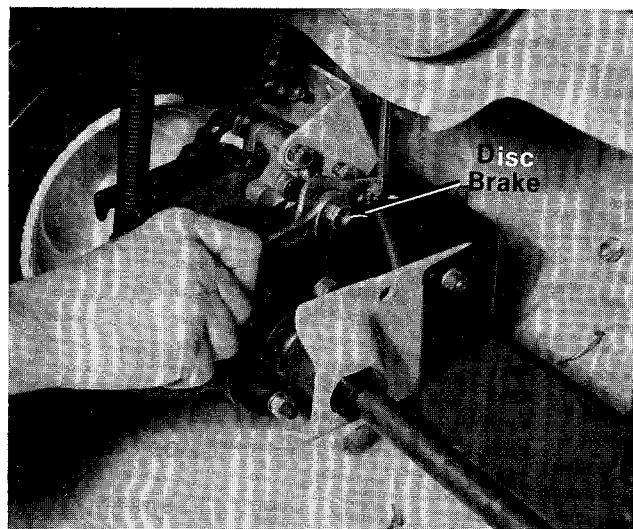


FIGURE 8.

### CHAIN ADJUSTMENT

After the first five hours of operation the initial slack should be removed from the chain. The chain should be tight enough so that it deflects approximately 1/2 inch when it is depressed with the thumb.

1. To tighten the chain, loosen the two locking nuts on each side of the rear axle. See figure 9.
2. Tighten the adjusting nuts at corners of rear chassis until you have the proper chain tension.
3. Tighten the locking nuts on the rear axle.

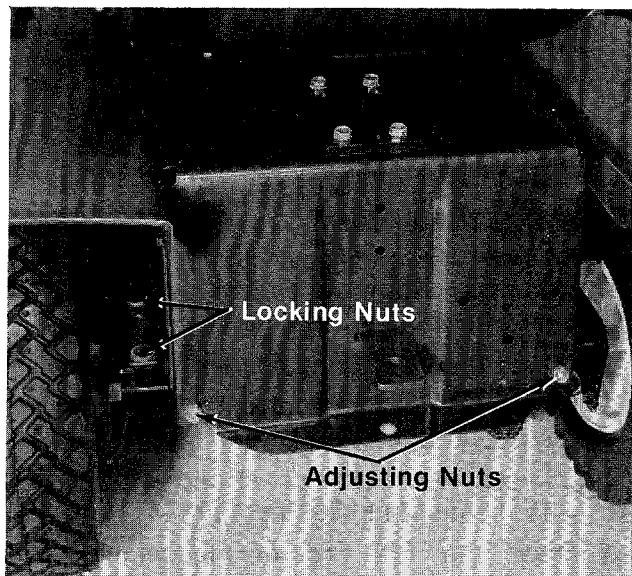


FIGURE 9.



## WHEEL ALIGNMENT

The caster (forward slant of the king pin) and the camber (tilt of the wheels out at the top) requires no adjustment. Automotive steering principles have been used to determine the caster and camber on the mower. The front wheels should toe-in 1/8 inch. See figure 10.

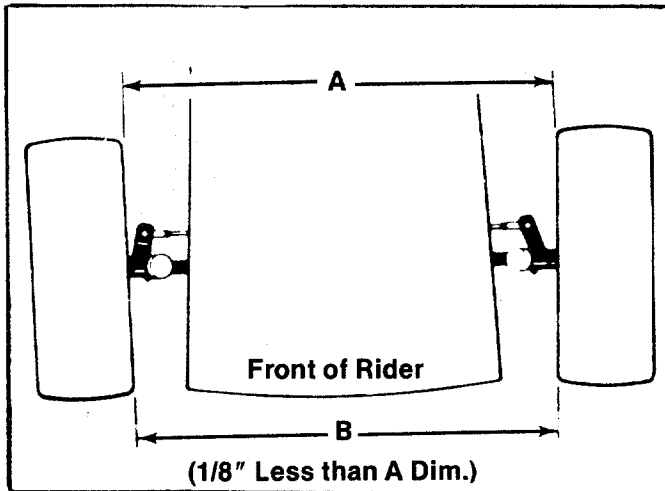


FIGURE 10.

### To Align the Wheels:

1. Remove the cotter pin holding the ferrule to the front axle assembly. See figure 11.

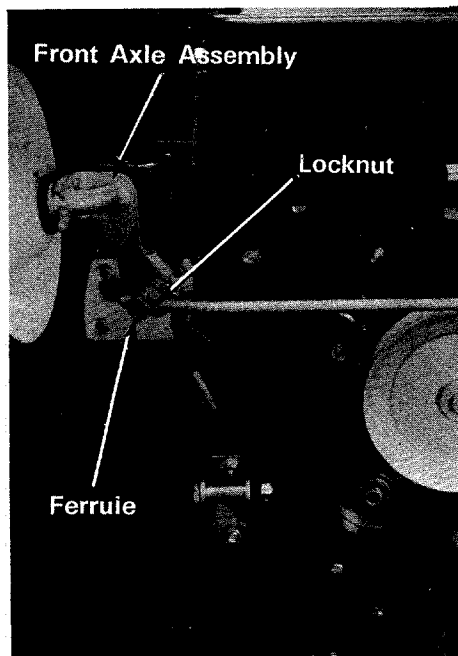


FIGURE 11.

2. Loosen the lock nut.
3. Screw the ferrule in or out until the proper adjustment is made.

4. Place the ferrule back into the front axle assembly and secure it with the cotter pin and tighten the lock nut.

## THROTTLE CONTROL

### To Check Operation:

1. Remove air cleaner.
2. Move throttle control lever to "CHOKE" position. The carburetor choke should be closed.
3. Move throttle control lever to "STOP" position. Lever should make good contact with stop switch.

### To Adjust: (See figure 12)

Place remote control lever on equipment in "FAST" (high speed) position.

Lever C on carburetor should be just touching choke arm at D. To adjust, loosen casing clamp screw A on blower housing. Move control casing B forward or backward until correct position is obtained. Tighten screw A.

Recheck operation of controls after adjustment. Replace air cleaner.

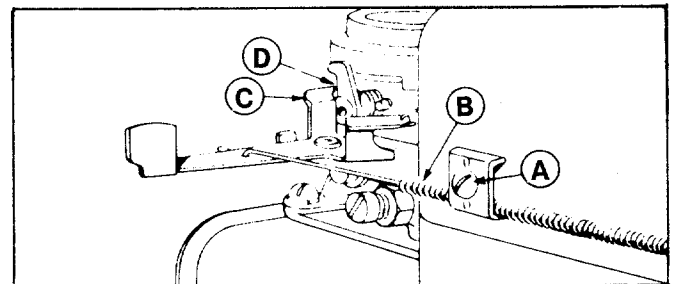


FIGURE 12. THROTTLE CONTROL ADJUSTMENT

### CARBURETOR ADJUSTMENTS: (See figure 13)



If any adjustments are made to the engine while the engine is running (e.g. carburetor), disengage all clutches and blades. Keep clear of all moving parts. Be careful of heated surfaces and muffler.

Minor carburetor adjustment may be required to compensate for differences in fuel, temperature, altitude and load.

### Initial Adjustment:

Turn needle valve clockwise to close it. Then open 2 turns. This initial adjustment will permit the engine to be started and warmed up before making final adjustment.

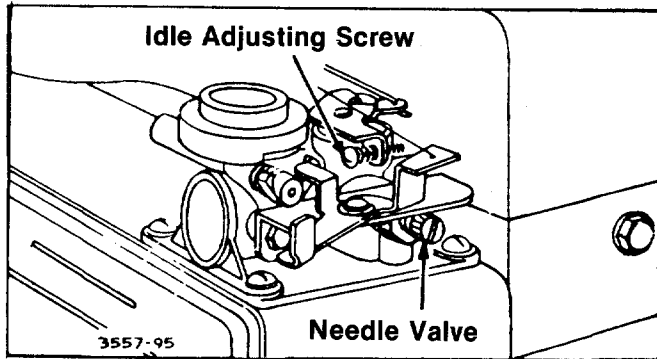


FIGURE 13. CARBURETOR ADJUSTMENT

### Final Adjustment:

With engine running at normal operating speed (approximately 3000 RPM without load), turn needle valve clockwise until engine starts to lose speed (lean mixture). Then slowly turn needle valve counterclockwise past the point of smoothest operation, until engine just begins to run unevenly. This mixture will give best performance under load.

To check adjustment, move engine control from "SLOW" to "FAST" speed. If engine tends to stall or die out, it usually indicates that the mixture is slightly lean. It may be necessary to open the needle valve slightly to provide a richer mixture. This richer mixture may cause a slight unevenness in idling.

## LUBRICATION



### IMPORTANT

Always stop engine and disconnect spark plug wire before cleaning, lubricating or doing any kind of work on lawn mower.

1. **Front Wheel Bearings (4).** Lubricate with SAE 30 oil once a season or after every 25 hours of operation. See figure 14.
2. **King Pin Bearings (4).** Lubricate with SAE 30 oil once a season or after every 25 hours of operation. See figure 14.

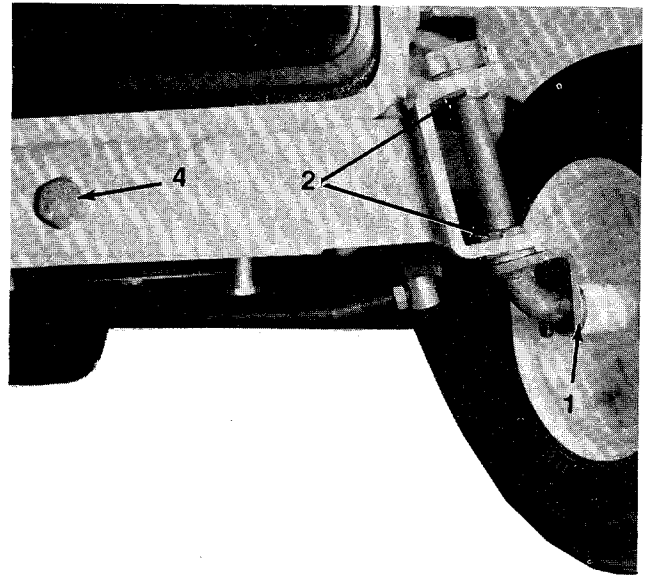


FIGURE 14.

3. **Steering Gears.** Lubricate the two gears with automotive multi-purpose grease once a season. See figure 15.
4. **Pivot Bolt.** Lubricate with SAE 30 oil once a season. See figure 14.

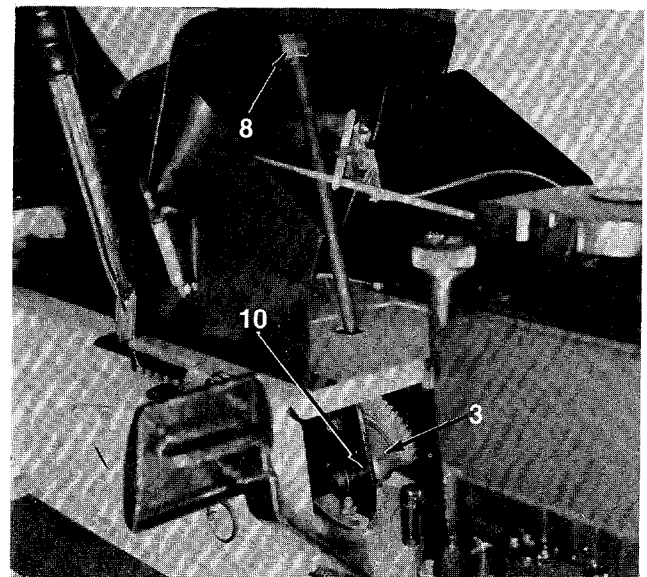


FIGURE 15.

5. **Deck Wheel Bearings (4).** Remove the axle bolt and lubricate with multi-purpose automotive grease once a season or after every 25 hours of operation. See figure 16.

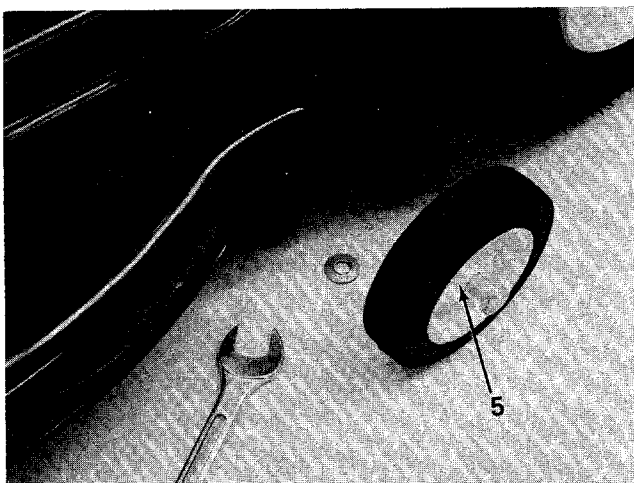


FIGURE 16.

6. **Differential.** Lubricated at the factory with 2 ounces of high temperature grease (450° F.). The grease should only be checked or replaced if the differential is disassembled for repair. See figure 17.
7. **Transmission.** Lubricated at the factory with 12 ounces of E.P. Lithium grease. The grease should only be checked or replaced if the transmission is disassembled for repair.
8. **Steering Column Bearings (2).** Oil once a season with SAE 30 oil. See figure 15.
9. **Rear Axle Bearings (3).** Requires no lubrication. See figure 17.
10. **Steering Shaft Bearings (2).** Requires no lubrication. See figure 15.
11. **Chain.** Remove and clean with kerosene. Lubricate with an oil soaked rag. See figure 17.



Do not get oil on the sprocket or brake pads.

The following items have sealed bearings and require no further lubrication.

Blade Spindle Bearings  
Tie Rod Ends  
Idler Bearings

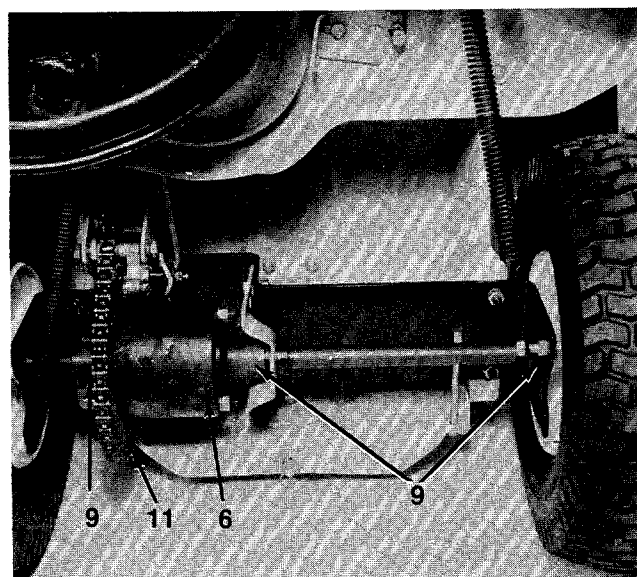


FIGURE 17.

## MAINTENANCE

### CUTTING BLADES

#### A. Removal for Sharpening or Replacement



Be sure to disconnect and ground the spark plug wire before working on the cutting blade to prevent accidental engine starting.

1. Remove the large bolt and lock washer which holds the blade and adapter to the blade spindle. See figure 18.

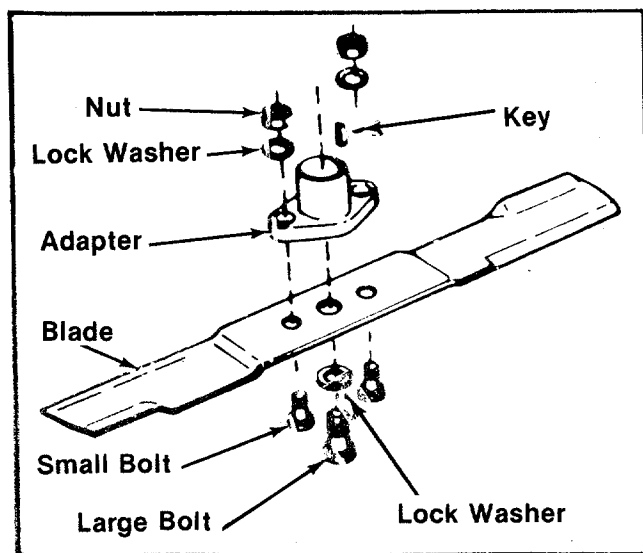


FIGURE 18.

2. Remove the blade and adapter from the spindle. Be careful not to lose the key on the spindle.
3. If the blade or blade adapter needs replacing, remove the two small bolts, lock washers and nuts which hold the blade to the adapter.

## B. Sharpening

Remove the cutting blade by following the directions of the preceding section.

When sharpening the blade, follow the original angle of grind as a guide. It is **extremely important** that each cutting edge receives an equal amount of grinding to prevent an unbalanced blade. An unbalanced blade will cause excessive vibration when rotating at high speeds and may cause damage to the mower.

The blade can be tested for balance by balancing it on a round shaft screwdriver. Remove metal from the heavy side until it balances evenly. See figure 19.



### NOTE

It is recommended that the blade always be removed from the adapter for the best test of balance.

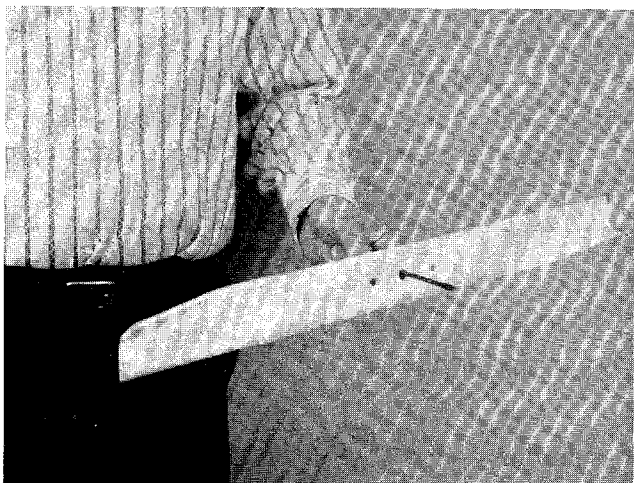


FIGURE 19.

## C. Reassembly

Before reassembling the blade and the blade adapter to the unit, lubricate the spindle and the inner surface of the blade adapter with light oil. Lubricating the bolt holes, bolts and inner surface of the nuts with light oil is also recommended. A 4 oz. plastic bottle of light oil lubricant is available. Order part number 737-0170. Engine oil may also be used.

When replacing the blade, be sure to install the blade with the side of the blade marked "Bottom" (or with part number) facing the ground when the mower is in the operating position. Make certain key is in place on the blade spindle.

### Blade Mounting Torque

3/8" Dia. Bolt 375 in. lb. min., 450 in. lb. max.

5/16" Dia. Bolt 150 in. lb. min., 250 in. lb. max.

To insure safe operation of your unit, ALL nuts and bolts must be checked periodically for correct tightness.

## DECK

The underside of mower deck should be cleaned after each period of use as grass clippings, leaves, dirt and other matter will accumulate. This accumulation of grass clippings, etc., is undesirable as it will invite rust and corrosion and may cause an uneven discharge of grass clippings at the next cutting.

The deck may be cleaned by tilting the mower forward or on its side and scraping clean with a suitable tool or by washing with a stream of water from a garden hose.



### CAUTION

Do not direct the stream of water at a hot engine as damage to the engine may result.

## ENGINE OIL

Check oil level before starting engine and after every 5 hours of operation or each period of use.

ADD oil as necessary to keep level FULL TO POINT OF OVERFLOWING.

Before removing oil fill plug, clean area around plug to prevent dirt from entering oil fill hole.

Engine should be in a level position when checking oil.

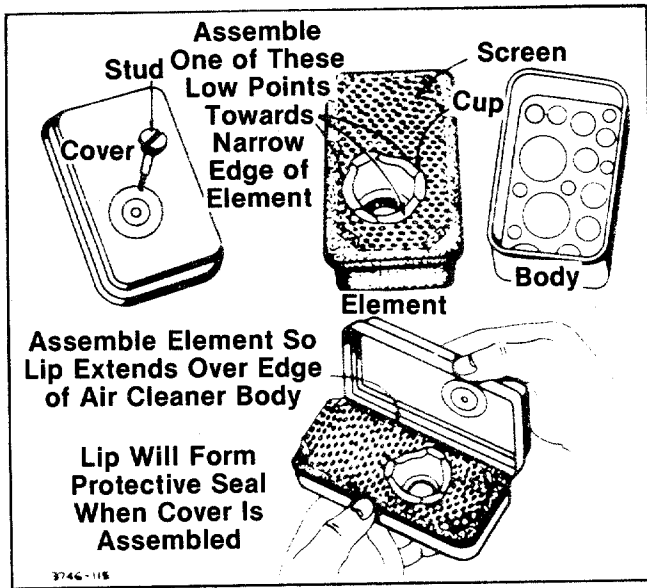
Change oil after first 5 hours of operation. Thereafter change every 25 hours. Change oil while engine is warm. Oil may be drained from oil drain by tipping unit on its side. See figure 12. Oil capacity 1 3/4 pints.

## AIR CLEANER

Clean air cleaner and re-oil element every 25 hours under normal conditions. Clean every few hours under extremely dusty conditions. Poor engine performance and flooding usually indicates that the air cleaner should be serviced. See figure 20.

1. Remove screw.
2. Remove air cleaner carefully to prevent dirt from entering carburetor.

3. Take air cleaner apart and clean.
  - a. WASH foam element in kerosene or a liquid detergent and water to remove dirt.
  - b. DRY foam completely by wrapping and squeezing in a cloth.
  - c. SOAK foam with engine oil. Squeeze to distribute and remove excess oil.
4. Reassemble parts and fasten to carburetor.



**FIGURE 20.**

### SPARK PLUG

The spark plug should be cleaned and the gap reset to a 0.030-inch clearance once a season. Spark plug replacement is recommended at the start of each mowing season; check engine manual for correct plug type.



### NOTE

Whenever the spark plug is removed for cleaning, it is advisable to replace the spark plug gasket with a new gasket.

### BELTS: REMOVAL AND REPLACEMENT

#### Preparation



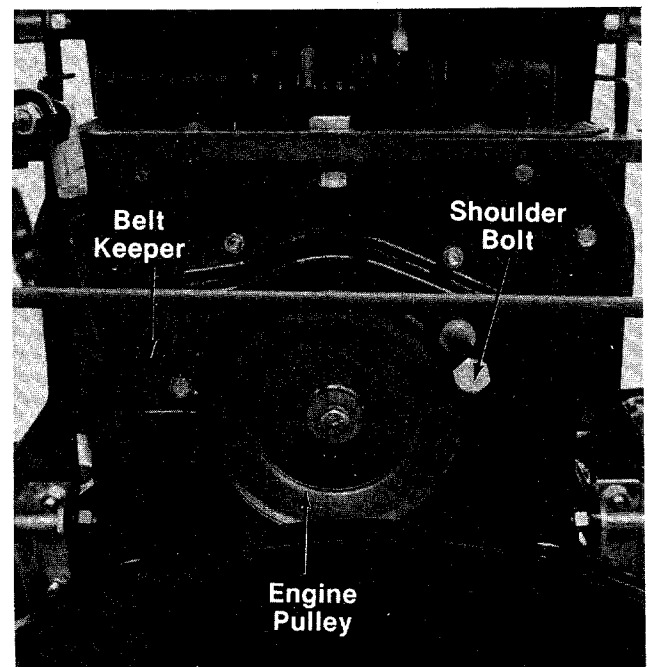
### WARNING

Before up-ending vehicle for maintenance, position it on a hard level surface. Make sure area is clear of children and pets.

Disconnect the spark plug wire and ground it against the engine.

To prevent gasoline from leaking from the gasoline tank, remove the cap, place a piece of plastic film over the neck of the tank and screw on the cap or drain tank.

1. Lock out brake and clutch pedals. See figures 4 and 5.
2. Put the lift lever in the disengaged position.
3. Block rear tires. Carefully lift up front of mower and tip unit on end. Mower will balance on rear tires and back of seat.
4. Remove the belt keeper and shoulder bolt on the engine pulley. See figure 21.



**FIGURE 21.**

5. Remove the blade belt from the engine pulley.
6. Put the lift lever in the engaged position.
7. Remove the two tension springs on the rear of the deck.
8. Remove the six pins holding the deck to the frame. See figure 22.
9. Lift off the deck and set it aside.



### NOTE

Use only belts recommended by the mower manufacturer. An "off-the-shelf" belt will provide only temporary service.

### Transmission Belt (See figure 22)

1. Remove the entire belt guard from the engine pulley by removing the two front engine bolts.
2. Remove the two belt guards from the transmission pulley.
3. Remove the V-idler pulley.
4. Remove and replace V-belt.

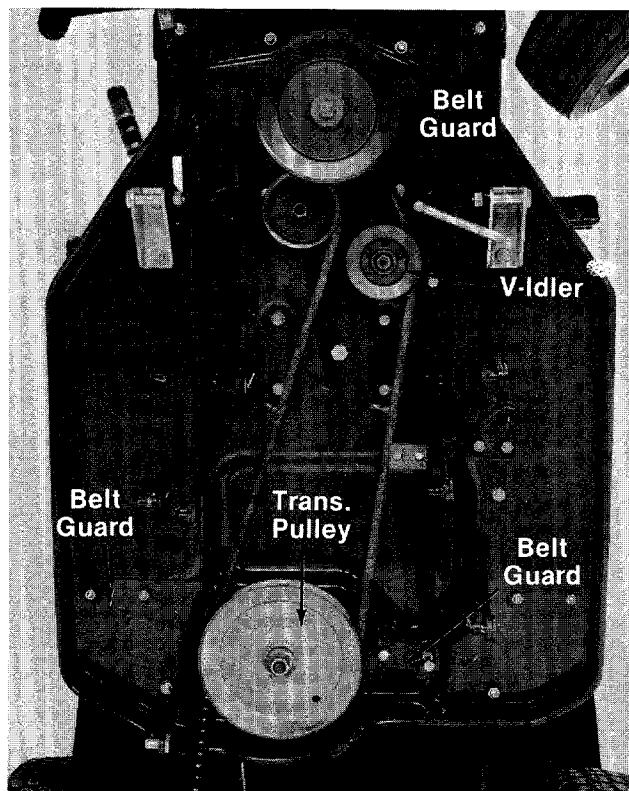


FIGURE 22.

### Blade Belt (See figure 23)

1. Take off both belt guards on the deck.
2. Remove and replace the belt with a new one.

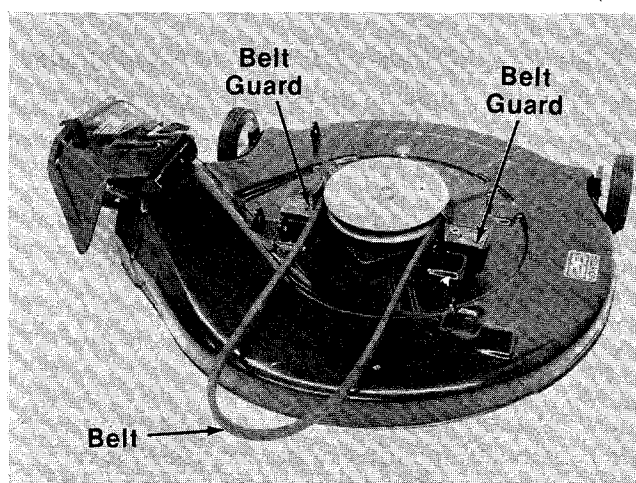


FIGURE 23.

## OFF-SEASON STORAGE

If the machine is to be inoperative for a period longer than 30 days, the following procedures are recommended:



Do not drain fuel while smoking, or if near an open fire.

1. Working outdoors, drain all fuel from the fuel tank. Use a clean dry cloth to absorb the small amount of fuel remaining in the tank, then run the engine until all fuel in the carburetor is exhausted.
2. Drain all the oil from the crankcase (this should be done after the engine has been operated and is still warm) and refill the crankcase with clean new oil.
3. Disconnect the spark plug wire and remove the spark plug from the cylinder. Pour about 2 or 3 tablespoons of engine oil into the cylinder through the spark plug hole, and then turn the engine over several times to spread out the oil. Replace the spark plug, but do not connect the wire.
4. Clean the engine and the entire mower thoroughly.

# TROUBLE SHOOTING CHART FOR RECOIL START MODELS

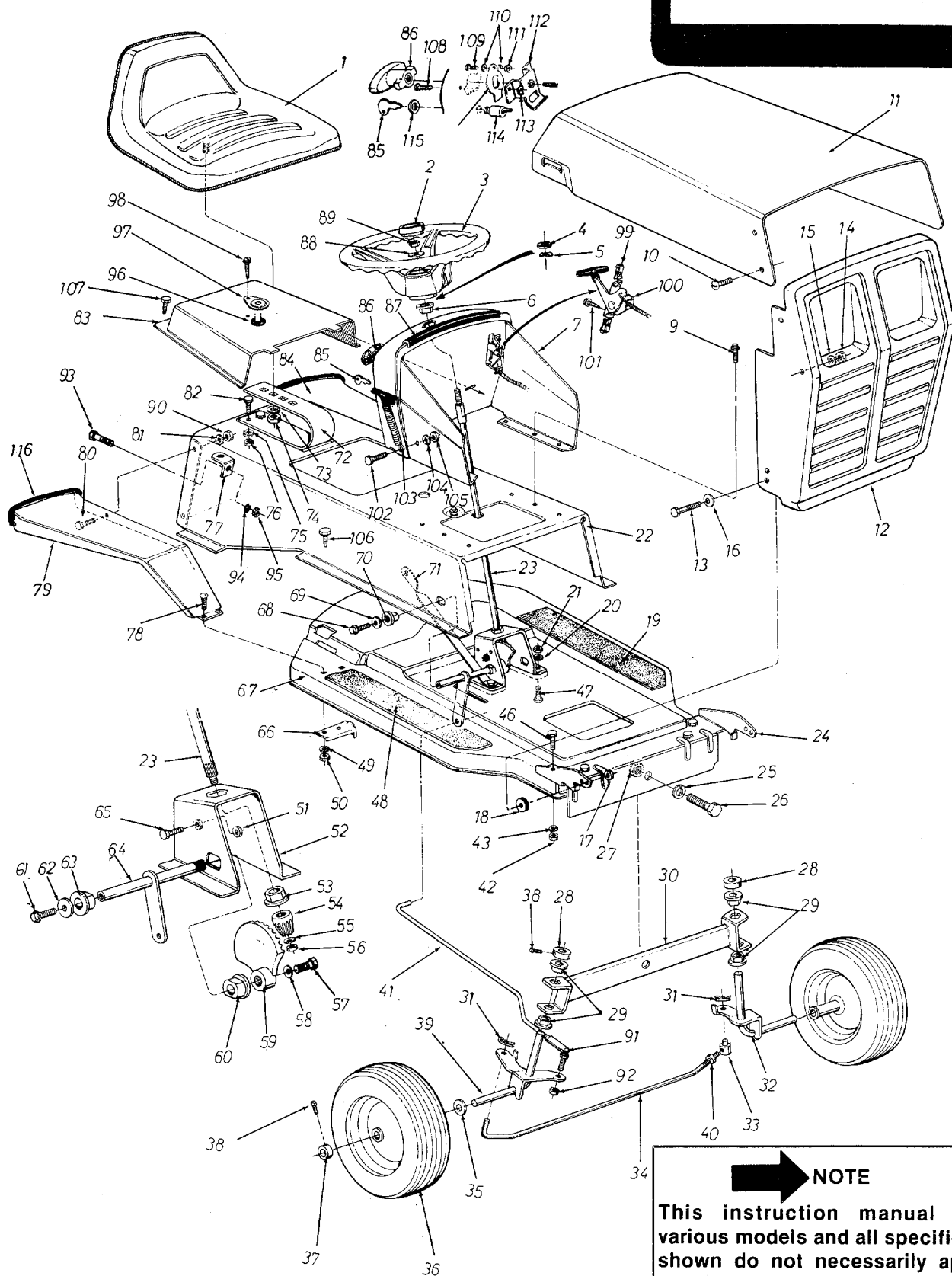
CAUTION: ALWAYS DISCONNECT SPARK PLUG BEFORE ATTEMPTING ANY REMEDY.

TROUBLE	LOOK FOR	REMEDY
Engine will not start when recoil handle is pulled.	Clutch and blade not disengaged.	Clutch pedal must be depressed and blade must be shut off.
	Ignition key not in the ON position.	Turn on the ignition key.
	Throttle not in the starting position.	Check owner's guide for correct position for throttle control for starting.
	No spark to spark plug.	Spark plug lead disconnected. Connect lead. Hold spark plug lead away from engine block about 1/8". Crank engine. There should be a spark. If not, have the engine repaired at authorized engine service dealer. Faulty spark plug. To test, remove spark plug. Attach spark plug lead to spark plug. Ground spark plug body against the engine block. Crank the engine. The spark plug should fire at the electrode. Replace if it does not.
	No fuel to the carburetor.	Gasoline tank empty. Fill. Fuel valve shut off. Open valve. Valve is located either at the bottom of the fuel tank or on the carburetor. Fuel line is plugged. Remove and clean.
	Air filter dirty.	If the air cleaner is dirty, the engine may not start. Clean or replace as recommended by the engine manufacturer.
	Mechanical failure (wires or switch).	The interlock system includes two mechanical activated switches which are wired in parallel. If the buttons on both switches are not depressed at least 1/8", the magneto will be grounded and the engine will not start. While testing the interlock system, you will make the mower temporarily unsafe by permitting the engine to be started with the blade and clutch engaged. <b>WARNING:</b> While testing, disengage the clutch, shut off the blade control, set the parking brake and place the gear shift lever in neutral. Disconnect the yellow wire where it attaches to the primary wire from the breaker assembly on the engine. Try to start the engine. If the <b>engine does not start</b> , the problem is in the engine (e.g. no fuel or no ignition). If the engine does start, the problem is in the safety system. Check the following: 1. The interlock wire may be grounded by being pinched or rubbing through the insulation. Tape or replace the wire. 2. The bolt on the flat spring behind the recoil starter where the yellow wire attaches must be insulated from the spring. Use a continuity tester. If it is not insulated, remove the bolt and nut, and replace the two fiber washers and reassemble.
Engine stops when the mower blade is engaged or the clutch is released.	Recoil handle is not in proper position.	After the engine starts, the recoil starter handle must be pushed into the dashboard and turned a quarter turn either direction to lock it in place.
Engine smokes. Excessive vibration	Engine loses crankcase vacuum.	Dipstick not seated or broken. Replace defective part. Engine breather defective. Replace.
	Bent or damaged blade spindle	<b>Stop engine immediately.</b> Check all pulleys, blade spindles, blade adapters, keys and bolts for tightness or damage. Tighten or replace any damaged parts.
	Bent blade.	<b>Stop engine immediately.</b> Replace damaged blade. Only use original equipment blades.
Mower will not discharge grass or leaves uncut strips.	Engine speed too low.	Throttle must be set between 3/4 and full throttle.
	Transmission selection.	Use lower transmission gear. The slower your ground speed, the better the quality of cut.
	Blades short or dull.	Sharpen or replace blades (uncut strip problem only).



# 131-380A

IF YOU WRITE TO US ABOUT THIS ARTICLE  
OR IF YOU ORDER REPLACEMENT PARTS AL-  
WAYS MENTION THIS MODEL & SERIAL NO  
MODEL



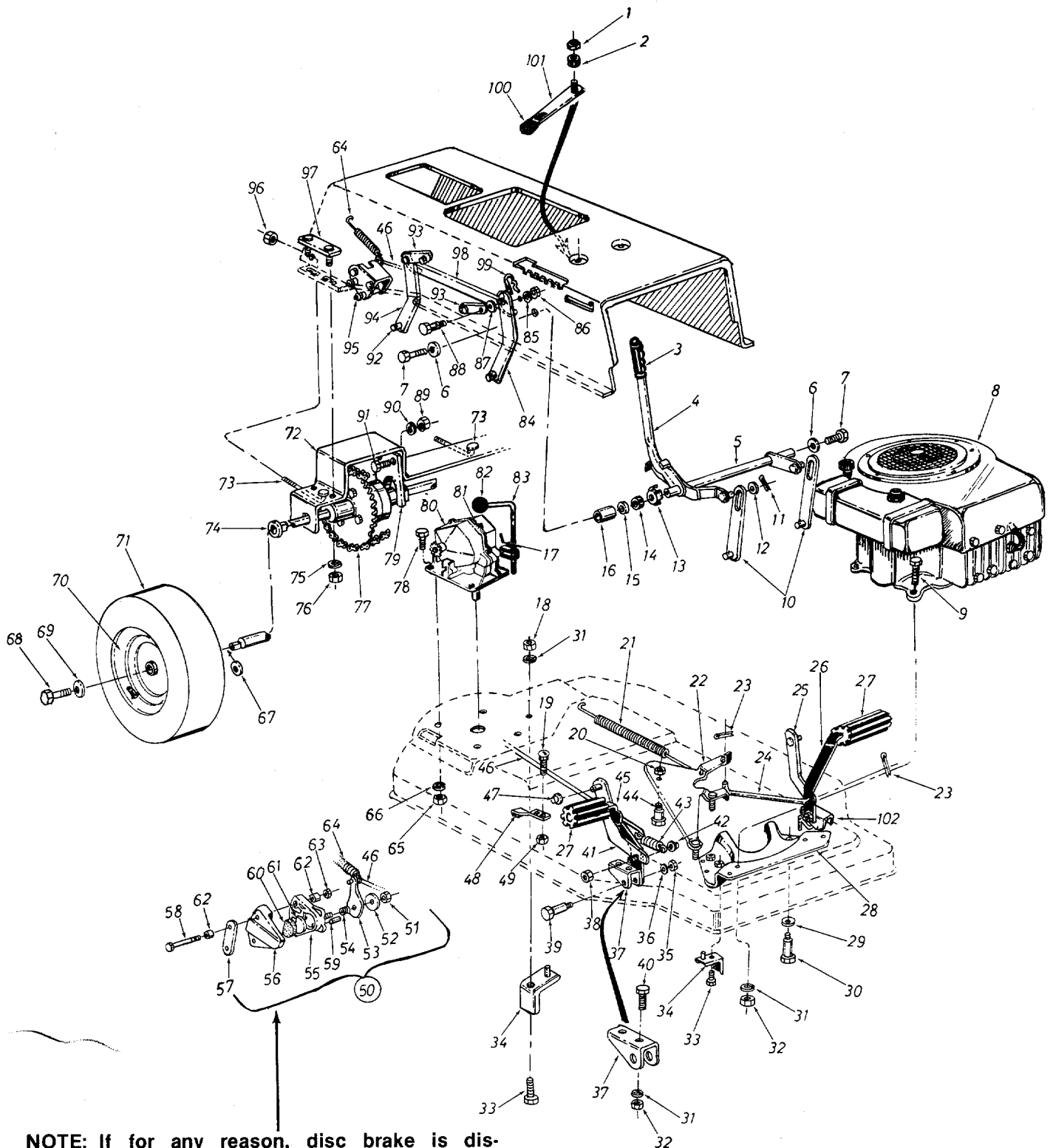
This instruction manual covers various models and all specifications shown do not necessarily apply to your model. Specifications subject to change without notice or obligation.

# 131-380A

## PARTS LIST FOR MODEL 131-380A

REF. NO.	PART NO.	COLOR CODE	DESCRIPTION	NEW PART	REF. NO.	PART NO.	COLOR CODE	DESCRIPTION	NEW PART
1	757-0264		Seat Assembly		62	736-0105		Belleville Wash.	
2	731-0220		Cap for Steering Wheel		63	741-0199		Plastic Flanged Brg.	
3	731-0219		12" Dia. Steering Wheel		64	12749		Steering Arm Shaft Ass'y.	
4	736-0156		FI-Wash. .635 I.D. x 1.120		65	710-0670		Hex Scr. Nylon 3/8-16 x 1.25"	
5	736-0174		Wave Wash. .66 I.D. x .88		66	11055		Transmission Belt Guard	
6	748-0227		Hex Flange Brg. .630 I.D.		67	13879	—462	Lower Frame	
7	12740		Dash Panel Ass'y.—Recoil		68	710-0325		Hex Scr. 3/8-24 x .50" Lg.*	
9	710-0198		Hex Sems Scr. 5/16-18 x .75		69	736-0105		Belleville Wash.	
10	710-0255		Truss Mach. Scr. 1/4-20 x .75"		70	741-0199		Plastic Flanged Brg.	
11	11836	—462	Hood		71	12800		Transmission Support Brkt.	
12	13794	—462	Grille		72	732-0256		Seat Spring 3.25 High	
13	738-0145		Shld. Scr. .498 Dia. x .835" Lg.		73	736-0921		L-Wash. 1/2" Scr.*	
14	712-0287		Hex Nut 1/4-20 Thd.*		74	712-0206		Hex Nut 1/2-13 Thd.*	
15	736-0329		L-Wash. 1/4" Scr.*		75	736-0119		L-Wash. 5/16" Scr.*	
16	736-0253		Belleville Wash.		76	712-0267		Hex Nut 5/16-18 Thd.*	
17	712-0375		Hex Cent. L-Nut 3/8-16 Thd.		77	09963	—462	Hitch Bracket	
18	748-0190		Spacer		78	710-0255		Truss Mach. Scr. 1/4-20 x .75"	
19	723-0305		Foot Mat—L.H.		79	11002	—462	Rear Fender	
20	736-0119		L-Wash. 5/16" Scr.*		80	710-0195		Hex Scr. 1/4-28 x .62" Lg.*	
21	712-0267		Hex Nut 5/16-18 Thd.*		81	736-0329		L-Wash. 1/4" Scr.*	
22	13880	—462	Upper Frame		82	710-0322		Hex Sems Scr. 5/16-18 x 1.00"	
23	738-0307		Steering Shaft		83	12804		Transmission Panel	
24	12746		Front Pivot Bracket		84	11002	—462	Rear Fender	
25	736-0158		L-Wash. 5/8" Scr.*		85	725-0201		Ignition Key Only	
26	710-0312		Hex Scr. 5/8-18 x 1.31 Spec.			725-0464		Ignition Switch (Not Shown)	
27	712-0923		Hex Cent. Jam Nut 5/8-18		86	11263		Plastic Handle	
28	711-0169		Collar for a 5/8" Dia.		87	731-0511		Trim Strip 12" Lg.	
29	748-0227		Hex Flange Brg. .630 I.D.		88	736-0242		Belleville Wash. .345 I.D.	
30	13274		Pivot Bar Ass'y.		89	712-0158		Hex Cent. L-Nut 5/16-18 Thd.	
31	714-0115		Cotter Pin 1/8" Dia. x 1.00"		90	712-0138		Hex Nut 1/4-28 Thd.*	
32	12752		Axle Ass'y.—Front—L.H.		91	723-0156		Ball Joint Ass'y. 3/8-24 Thd.	
33	711-0198		Ferrule		92	712-0116		Hex Ins. L-Nut 3/8-24 Thd.	
34	747-0144		Tie Rod		93	710-0216		Hex Scr. 3/8-16 x .75" Lg.*	
35	736-0156		FI-Wash. .635 I.D. x 1.120		94	736-0119		L-Wash. 3/8" Scr.*	
36	734-0510		Front Wheel Ass'y.—Comp. 10.25 x 3.25		95	712-0798		Hex Nut 3/8-16 Thd.*	
37	711-0169		Collar 5/8" I.D.		96	731-0309		Nylon Bushing	
38	710-0666		Sq. Hd. Set Scr. 5/16-18 x .375"		97	12653		Bushing Cap	
39	12755		Axle Ass'y.—Front—R.H.		98	710-0351		Truss Mach. B-Tap Scr. #10 x .50" Lg.	
40	712-0711		Hex Jam Nut 3/8-24 Thd.		99	712-0344		Speed Nut #10	
41	711-0625		Steering Rod		100	746-0273		Throttle Control Ass'y.	
42	712-0267		Hex Nut 5/16-18 Thd.*		101	710-0351		Truss Mach. B-Tap Scr. #10 x .50" Lg.	
43	736-0119		L-Wash. 5/16" Scr.*		102	710-0289		Hex Scr. 1/4-20 x .50" Lg.*	
46	710-0198		Hex Sems Scr. 5/16-18 x .75"		103	723-0296		Hood Lock Ass'y.	
47	710-0198		Hex Sems Scr. 5/16-18 x .75"		104	736-0329		L-Wash. 1/4" Scr.*	
48	723-0304		Foot Mat—R.H.		105	712-0287		Hex Nut 1/4-20 Thd.*	
49	736-0329		L-Wash. 1/4" Scr.*		106	710-0451		Carr. Bolt 5/16-18 x .75	
50	712-0287		Hex Nut 1/4-20 Thd.*		107	710-0599		Hex Wash. SF-Tap Scr. 1/4-20 x .50	
51	712-0375		Hex Cent. L-Nut 3/8-16 Thd.		108	710-0351		Truss Mach. B-Tap Scr. #10 x .50" Lg.*	
52	12850		Steering Gear Support Ass'y.		109	710-0425		Truss Mach. Scr. #10-24 x .62" Lg.*	
53	748-0228		Hex Flange Brg. .505 I.D.		110	736-0338		Fiber Wash.	
54	748-0237		Pinion Gear		111	712-0121		Hex Nut #10-24 Thd.	
55	736-0242		Belleville Wash.		112	11053		Switch Brkt. Ass'y.	
56	712-0237		Hex Cent. L-Nut 5/16-24 Thd.		113	712-0334		Speed Nut #10Z	
57	710-0180		Hex Scr. 3/8-24 x .75" Lg.*		114	725-0464		Ignition Switch	
58	736-0105		Belleville Wash.		115	736-0225		Int. L-Wash. 5/8" I.D.	
59	748-0236		Bevel Gear		116	731-0497		Edge Strip (6.5" Lg.)	
60	741-0199		Plastic Flanged Brg.						
61	710-0325		Hex Scr. 3/8-24 x .50" Lg.*						

# 131-380A



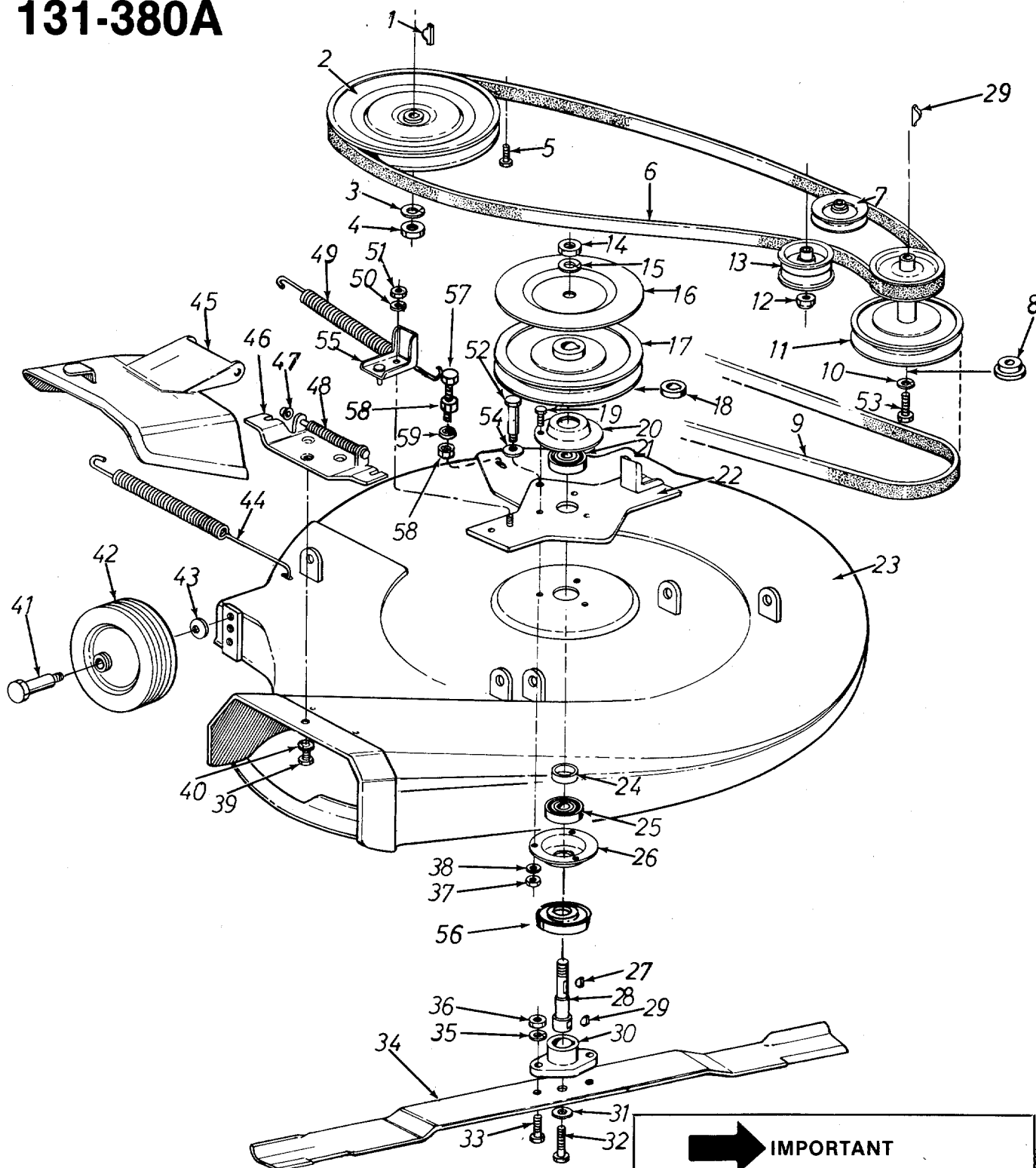
**NOTE:** If for any reason, disc brake is disassembled, be sure round end of push pins (Ref. No. 73) is toward the cam lever (Ref. No. 72).

# 131-380A

## PARTS LIST FOR RIDING MOWER MODEL 131-380A

REF. NO.	PART NO.	COLOR CODE	DESCRIPTION	NEW PART	REF. NO.	PART NO.	COLOR CODE	DESCRIPTION	NEW PART
1	712-0429		Hex Ins. L-Nut 5/16-18 Thd.		54	HH-06-03031		Compression Spring .350" Dia.	
2	735-0126		Rubber Wash. .33" I.D. x .87"		55	HH-12-03292		Casting Cam Side	
3	720-0157		Grip		56	HH-12-03293		Casting Carrier Side	
4	749-0212		Lift Handle—R.H.		57	11010		Brake Plate	
5	13630		Lift Handle Brkt. Ass'y.		58	710-0176		Hex Bolt 5/16-18 x 2.75" Lg.*	
6	736-0219		Bell-Wash.		59	HH-05-03034		Push Pin .309" Dia. x .857" Lg.	
7	710-0201		Hex Bolt 3/8-16 x .62" Lg.*		60	HH-15-02124		Friction Pad 1.110" Dia. ("D"-Shaped) .472 Thk.	
8	—		Engine		61	HH-03-03303		Backup Wash.	
9	710-0442		Hex Bolt 5/16-18 x 1.50" Lg.*		62	761-0133		Spacer for Disc Brake	
10	13851		Lockout Link Ass'y.		63	712-0158		Hex Cent. L-Nut 5/16-18 Thd.	
11	714-0115		Cotter Pin 1/8" Dia. x 1.00" Lg.*		64	732-0157		Spring .380 O.D. x 3.25" Lg. (Brake Return)	
12	736-0192		FI-Wash. .531 I.D. x .93 O.D.		65	712-0267		Hex Nut 5/16-18 Thd.*	
13	11029		Handle Pivot Brkt.		66	736-0119		L-Wash. 5/16" I.D.*	
14	735-0195		Rubber Wash.		67	736-0134		FI-Wash.	
15	736-0237		FI-Wash.		68	710-0627		Hex Bolt w/Lock 5/16-24 x .75" Lg.	
16	748-0273		Spacer 5/8" I.D. x 7/8" O.D.		69	736-0242		Bell-Wash.	
17	714-0474		Cotter Pin 1/8" Dia. x .75" Lg.*		70	734-0517		Rear Wheel Rim Ass'y.	
18	712-0267		Hex Nut 5/16-18 Thd.*			734-0298		Rear Wheel Tire Only 13.0 x 5.0"	
19	710-0134		Carriage Bolt 1/4-20 x .62" Lg.*		71	734-0523		Rear Wheel Ass'y.—Comp.	
20	712-0116		Hex Ins. L-Nut 3/8-24 Thd.		72	11009		Rear Axle Brkt.	
21	732-0191		Idler Spring .75" O.D. x 11.0" Lg.		73	710-0437		Chain Adj. Link 5/16-18 Thd.	
22	12446		Idler Brkt. Ass'y.		74	741-0199		FI-Brg. w/Flats .753" I.D.	
23	714-0115		Cotter Pin 1/8" Dia. x 1.00" Lg.*		75	736-0119		L-Wash. 5/16" I.D.*	
24	11061		Clutch Rod		76	712-0267		Hex Nut 5/16-18 Thd.*	
25	11057		Clutch Lever Ass'y.—L.H.		77	713-0161		#41 Chain 1/2" Pitch x 73 Links	
26	14220		Clutch Pedal		78	710-0322		Hex Sems Bolt 5/16-18 x 1.00" Lg.*	
27	735-0196		Foot Pad (Clutch and Brake)		79	10364		Rear Axle Plate	
28	12654		Engine Belt Guard Ass'y.		80	717-0222		Single Speed Transmission Ass'y.	
29	736-0105		Bell-Wash.		81	710-0412		Hex Bolt 1/4-28 x .75" Lg.*	
30	738-0215		Shld. Scr. 3.00" Lg.		82	720-0165		Ball Knob	
31	736-0119		L-Wash. 5/16" I.D.*		83	11080		Transmission Shift Lever Ass'y.	
32	712-0267		Hex Nut 5/16-18 Thd.*		84	11023		Deck Link Ass'y. (3 Req'd.)	
33	710-0259		Hex Sems Scr. 5/16-18 x .62" Lg.*		85	736-0119		L-Wash. 5/16" I.D.*	
34	12160		Belt Keeper Ass'y.		86	712-0267		Hex Nut 5/16-18 Thd.*	
35	712-0798		Hex Nut 3/8-16 Thd.*		87	736-0159		FI-Wash. .344" I.D. x .875" O.D.	
36	736-0169		L-Wash. 3/8" I.D.*		88	738-0140		Shld. Bolt .431" Dia. x .18" Lg.	
37	11039		Pedal "U" Brkt. Ass'y.		89	712-0267		Hex Nut 5/16-18 Thd.*	
38	712-0429		Hex Ins. L-Nut 5/16-18 Thd.		90	736-0119		L-Wash. 5/16" I.D.*	
39	738-0373		Shld. Bolt .498 Dia. x 1.525" Lg.		91	710-0198		Hex Sems Bolt 5/16-18 x .75" Lg.*	
40	710-0259		Hex Sems Bolt 5/16-18 x .62" Lg.*		92	711-0332		Lift Brkt. Pin	
41	11056		Parking Brake—Lever Ass'y.—R.H.		93	09721		Pivot Link Ass'y.	
42	726-0100		Push Nut		94	11024		Deck Link	
43	732-0245		Brake Spring		95	11011		Disc Brake Brkt. Ass'y.	
44	738-0140		Shld. Bolt .431 Dia. x .18" Lg.		96	712-0429		Hex Ins. L-Nut 5/16-18 Thd.	
45	14219		Brake Pedal Ass'y.		97	10360		Axle Bolt Plate Ass'y.	
46	747-0107		Brake Rod .25" Dia. 24.12" Lg.		98	11014		Connecting Lift Brkt.	
47	726-0121		Push Nut .25" Dia.		99	714-0101		Int. Cotter Pin 1/2" Dia.	
48	761-0174		Blade Brake Ass'y.		100	11249		Height Adj. Knob	
49	712-0287		Hex Nut 1/4-20 Thd.*		101	11027		Handle Stop Brkt. Ass'y.	
50	761-0130		Disc Brake Ass'y.—Comp.		102	11755		Pedal "U" Brkt.—L.H. Ass'y.	
51	712-0134		Hex Top L-Nut 5/16-24 Thd.						
52	HH-03-03032		Wash. .349" I.D. x 1.004" O.D.						
53	HH-18-03493		Cam Lever						

# 131-380A



**➔ IMPORTANT**

**Belts listed by Part Number are of special construction and should be used when replacement is necessary. The dimensions and description given are for general reference only and belts purchased by description and dimension generally will only provide temporary service.**

# 131-380A

## PARTS LIST FOR MODEL 131-380A

REF. NO.	PART NO.	COLOR CODE	DESCRIPTION	NEW PART	REF. NO.	PART NO.	COLOR CODE	DESCRIPTION	NEW PART
1	714-0129		#4 Hi-Pro Key 3/32 x 5/8" Dia.		29	714-0365		#6 Hi-Pro Key 5/32 x 5/8" Dia.	
2	756-0174		Trans. Split Pulley .50 I.D.		30	10769		Blade Adapter Kit	
3	736-0921		L-Wash. 1/2" Scr.*		31	736-0217		L-Wash. 3/8" Scr. H.D.	
4	712-0922		Hex Jam Nut 1/2-20 Thd.		32	710-0459		Hex Hd. Cap Scr. 3/8-24 x 1.50" Lg. H.T.	
5	710-0259		Hex Sems Scr. 5/16-18 x .62" Lg.*		33	710-0117		Hex Hd. Cap Scr. 5/16-24 x 1.00" Lg. H.T.	
6	754-0198		"V" Belt 1/2 x 62" Lg. (Drive Belt)		34	742-0147		26 Inch Blade	
7	756-0116		"V" Idler 3.06 O.D.		35	736-0119		L-Wash. 5/16" Scr.	
8	711-0572		Step Wash. for Engine Pulley		36	712-0123		Hex Nut 5/16-24 Thd.*	
9	754-0138		"V" Belt 21/32 x .50" Lg. (Blade Belt)		37	712-0267		Hex Nut 5/16-18 Thd.*	
10	736-0217		L-Wash. 3/8" Scr. H.D.		38	736-0119		L-Wash. 5/16" Scr.	
11	756-0246		Two-Step Engine Pulley		39	710-0195		Hex Hd. Cap Scr. 1/4-28 x .62" Lg. (3 Req'd.)	
12	712-0116		Hex Ins. L-Nut 3/8-24 Thd.		40	736-0329		L-Wash. 1/4" Scr.*	
13	756-0217		Flat Idler 2.75 O.D. w/Flanges		41	738-0373		Axle Bolt .478" Dia. 1.53	
14	712-0261		Hex Jam Nut 5/8-11 Thd.		42	734-0973		Wheel Ass'y. Comp. 5.0" Dia.	
15	736-0158		Sprg. L-Wash. 5/8" Scr.*		43	736-0105		Belleville Wash.	
16	11073		Blade Brake Disc.		44	732-0153		Deck Spring	
17	756-0143		Deck Split Pulley .63 I.D.		45	11634		Chute Cover Ass'y.	
18	748-0168		Spacer		46	11399		Adapter Plate Ass'y.	
19	710-0322		Hex Sems Cap Scr. 5/16-18 x 1.00 Lg.* (3 Req'd.)		47	726-0106		Push Nut 1/4" Rod	
20	741-0163		Housing—Brg. Ass'y.		48	732-0261		Torsion Spring	
21	741-0919		Ball Brg. .787 I.D. x 1.85 O.D.		49	732-0153		Deck Spring	
22	11541		Belt Guard Ass'y.		50	736-0119		L-Wash. 5/16" Scr.*	
23	11083		26 Inch Deck Ass'y.		51	712-0267		Hex Nut 5/16-18 Thd.*	
24	750-0142		Spacer .836 I.D. x 1.01 O.D. x .320 Thk.		52	738-0129		Shld. Scr. .498" Dia. x 2.00	
25	741-0919		Ball Brg. .787 I.D. x 1.85 O.D.		53	710-0151		Hex Hd. Cap Scr. 3/8-24 x 2.00" Lg.	
26	741-0163		Housing—Brg. Ass'y. w/Brg.		54	736-0242		Belleville Wash.	
27	08253		Brg. Housing (Only)		55	10426		Belt Keeper Ass'y.	
27	714-0388		#61 Hi-Pro Key 3/16 x 5/8" Dia.		56	13703		Bearing Shield	
28	711-0405		Spindle		57	710-0442		Hex Scr. 5/16-18 x 1.50" Lg.	
					58	712-0267		Hex Nut 5/16-18 Thd.*	
					59	736-0119		L-Wash. 5/16" Scr.*	
						11910		26.0" Deck Ass'y. Comp. (Service Only)	

\*For faster service obtain standard nuts, bolts and washers locally. If these items cannot be obtained locally, order by part number and size as shown on parts list.

(462—Red Flake) When ordering parts if color or finish is important, use color code shown at left. (e.g. Red Flake Finish—11001 (462).)

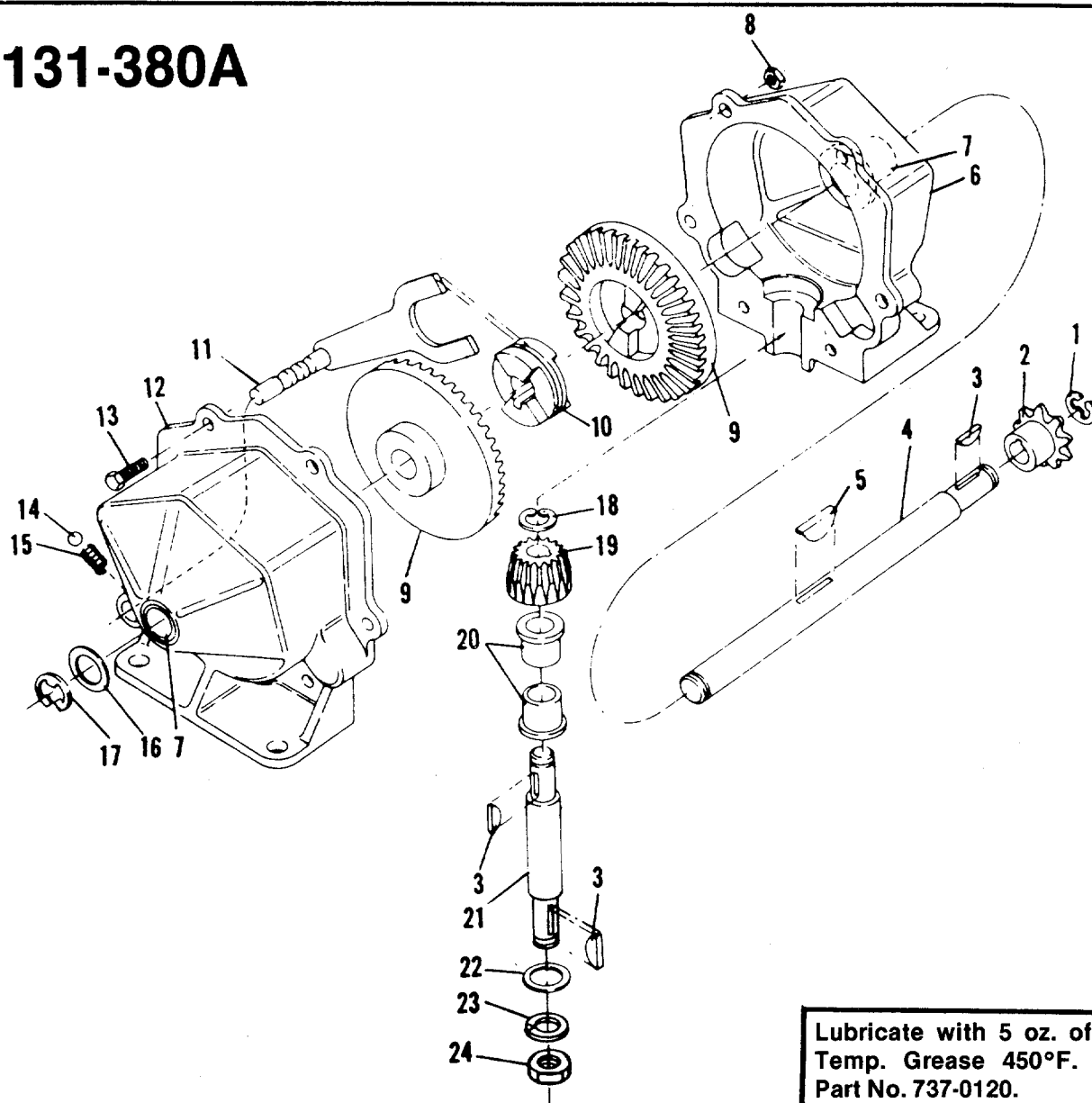
The engine is not under warranty by the mower manufacturer. If repairs or service is needed on the engine, please contact your nearest authorized engine service outlet. Check the "Yellow Pages" of your telephone book under "Engines — Gasoline."



### WHEEL CHART

FRONT WHEEL		REAR WHEEL	
PART NO.	DESCRIPTION	PART NO.	DESCRIPTION
734-0510	Wheel Ass'y. Comp. 10.25 x 3.25	734-0523	Wheel Ass'y. Comp. 13.00 x 5.00-6
748-0146	Flange Brg. w/Flats .630" I.D.	734-0517	Rim Ass'y. with Hub
		734-0298	Tire Only Tubeless 13.00 x 5.00-6
		734-0255	Air Valve
		734-0249	Inner Tube (Service Only)

# 131-380A

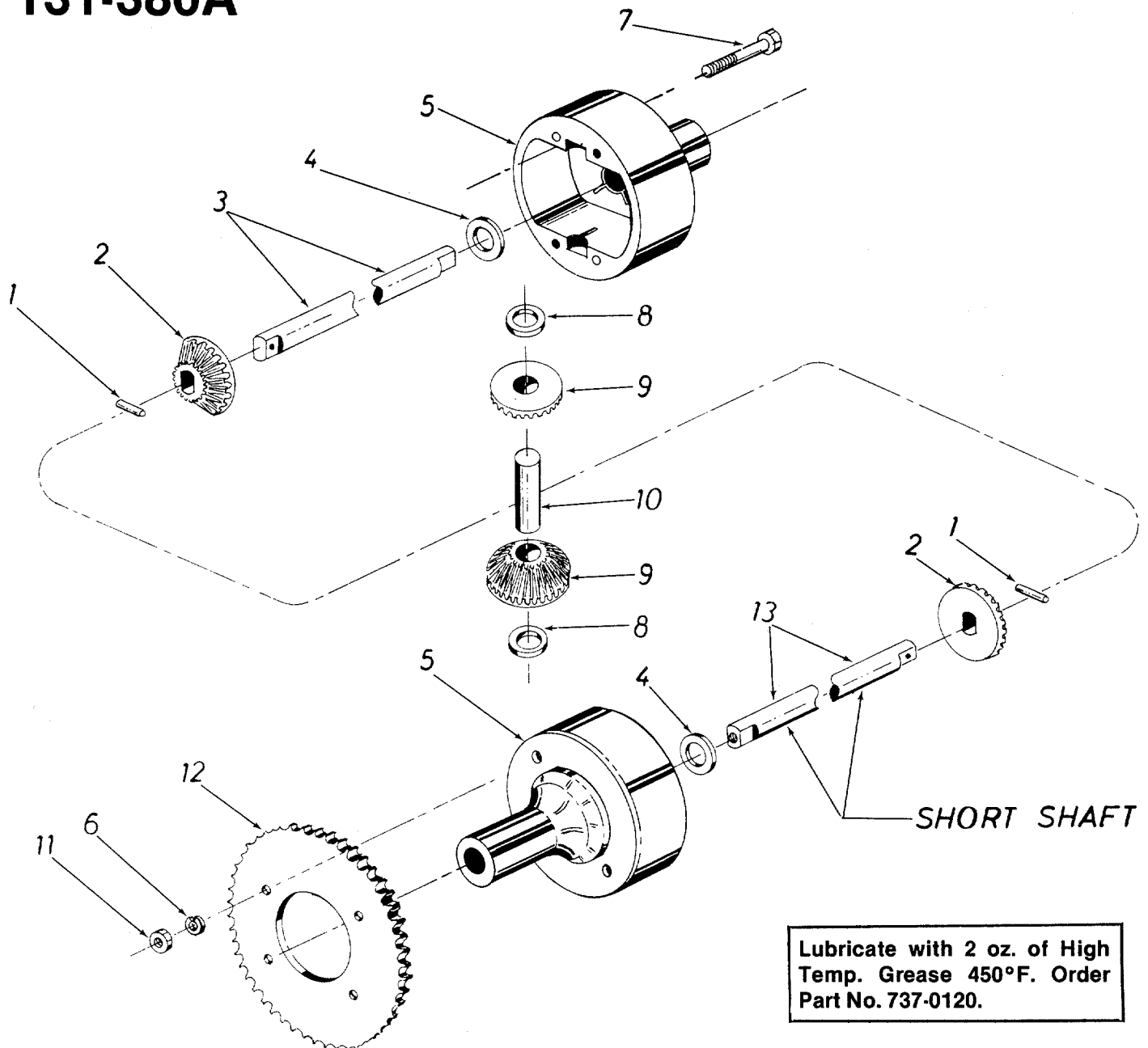


## PARTS LIST FOR SINGLE SPEED TRANSMISSION PART NO. 717-0223

REF. NO.	PART NO.	COLOR CODE	DESCRIPTION	NEW PART	REF. NO.	PART NO.	COLOR CODE	DESCRIPTION	NEW PART
1	716-0104		Snap Ring		14	741-0862		Detent Ball	
2	748-0852		Sprocket 8T #41		15	732-0863		Detent Spring	
3	714-0129		Key Hi-Pro #4		16	736-0116		Washer	
4	711-0854		Shaft Output		17	716-0106		E-Ring	
5	714-0126		Key Hi-Pro #606 (Hardened)		18	716-0865		Snap Ring #3100-50	
6	717-0123		Housing Half		19	748-0866		Bevel Pinion	
7	748-0855		Bearing		20	748-0867		Bearing	
8	712-0117		Lock Nut 1/4-28 Thd.*		21	738-0159		Pinion Shaft	
9	748-0856		Bevel Gear		22	736-0192		Washer	
10	748-0857		Clutch Collar		23	736-0921		Lock Washer 1/2"*	
11	08583		Detent Shaft Ass'y.		24	712-0922		Hex Jam Nut 1/2-20 Thd.*	
12	717-0124		Housing Half w/Detent Hole						
13	710-0195		Hex Hd. Cap Scr. 1/4-28 x .62*						



# 131-380A

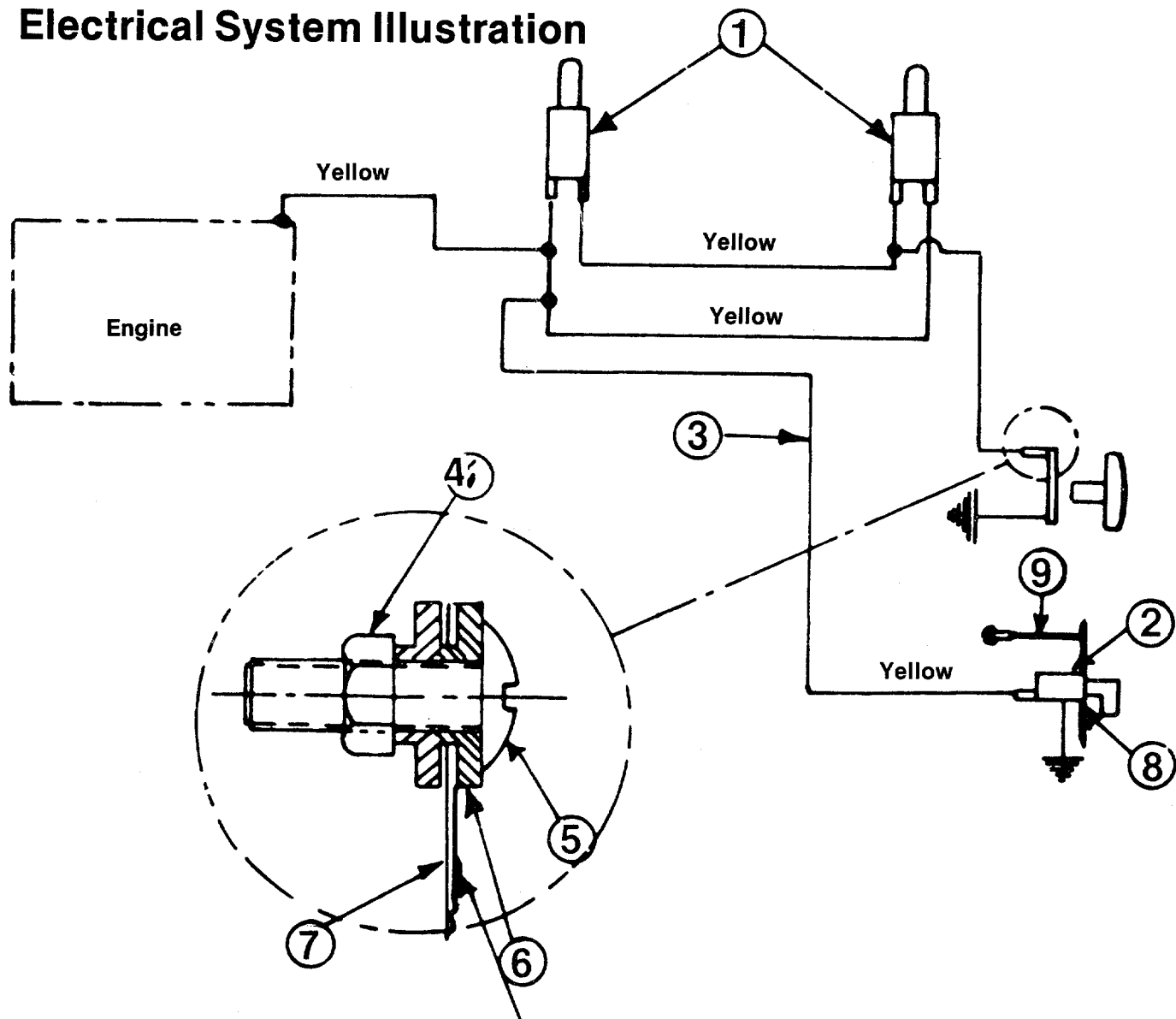


**PARTS LIST FOR DIFFERENTIAL ASSEMBLY 717-0326**

REF. NO.	PART NO.	Qty. Req'd.	DESCRIPTION	NEW PART
1	715-0247	2	Spring Pin Spir. 3/16" Dia. x 1.00" Lg.	
2	748-0185	2	Gear—Double "D" Hole	
3	738-0302	1	Shaft—Long 15.11" Lg.	
4	736-0188	2	Fl-Wash. .760 I.D. x 1.49 O.D.	
5	717-0341	2	Housing Half	
6	736-0119	2	L-Wash. 5/16" Scr.*	
7	710-0363	2	Hex Scr. 5/16-24 x 4.00" Lg.*	
8	736-0187	2	Fl-Wash. .640 I.D. x 1.24 O.D.	
9	748-0158	2	Gear—Round Hole	
10	711-0276	1	Drive Pin	
11	712-0237	2	Hex Cent. L-Nut 5/16-24 Thd.	
12	09054	1	Sprocket—40 Tooth	
13	738-0303	1	Shaft—Short 7.58" Lg.	

# 131-380A

## Electrical System Illustration



Screw Head on Spring Side w/Dimple

### PARTS LIST FOR SCHEMATIC

REF. NO.	PART NO.	DESCRIPTION	NEW PART
1	725-0269	Safety Switch—Red (2 Req'd.)	
2	725-0464	Magneto Ignition Switch w/Nut	
	725-0201	Ignition Key	
3	725-0272	Wire Harness	
4	712-0121	Hex Nut #10-24	
5	710-0425	Truss Mach. Scr. #10-24 x .62	
6	736-0338	Fiber Washer (2 Req'd.)	
7	736-0257	Switch Spring	
8	736-0225	Internal Lock Washer 5/8 I.D.	
9	725-0297	Ground Wire	

\*For faster service obtain standard nuts, bolts and washers locally. If these items cannot be obtained locally, order by part number and size as shown on parts list.

# PARTS INFORMATION

## POWER EQUIPMENT PARTS AND SERVICE

Parts and service for all MTD manufactured power equipment are available through the authorized service firms listed below. All orders should specify the model number of your unit, part numbers, description of parts and the quantity of each part required.

**NOTE:** If any parts are found to be missing or defective upon assembly of this unit, write to advise the factory so that immediate replacement can be made.

<b>ALABAMA</b>	<b>BIRMINGHAM</b>
Auto Electric & Carburetor Co. ....	2625 4th Ave. S. ....35233
<b>ARKANSAS</b>	<b>FORT SMITH</b>
Mity Mite Motors, Inc. ....	4515 S. 16th St. ....72901
Sutton's Lawn Mower Shop ....	<b>NORTH LITTLE ROCK</b>
<b>CALIFORNIA</b>	Rt. 4, Box 368 ....72117
Billious ....	<b>PORTERVILLE</b>
J.W. Jewett Co. ....	75 North D Street ....93257
<b>COLORADO</b>	<b>SAN FRANCISCO</b>
Colorado Outdoor Power Equip. ....	981 Folsom St. ....94107
<b>FLORIDA</b>	<b>DENVER</b>
Radco Distributors ....	527 West Evans ....80223
	<b>JACKSONVILLE</b>
	4909 Victor St. ....32207
	Box 5459 ....32207
	<b>OPA LOCKA</b>
Small Eng. Dist. ....	2351 N.W. 147th St. ....33054
<b>GEORGIA</b>	<b>EAST POINT</b>
East Point Cycle & Key ....	2834 Church St. ....30344
<b>ILLINOIS</b>	<b>LYONS</b>
Keen Edge Co. ....	8615 Ogden Ave. ....60534
<b>INDIANA</b>	<b>ELKHART</b>
Parts & Sales Inc. ....	2101 Industrial Pkwy. ....46514
<b>IOWA</b>	<b>DUBUQUE</b>
Power Lawn & Garden Equip. ....	2551 J.F. Kennedy ....52001
<b>LOUISIANA</b>	<b>NEW ORLEANS</b>
Suhren Engine Co. ....	8330 Earhart Blvd. ....70118
<b>MARYLAND</b>	<b>TAKOMA PARK</b>
Center Supply Co. ....	6867 New Hampshire Ave. ....20012
<b>MASSACHUSETTS</b>	<b>SPRINGFIELD</b>
Morton B. Collins Co. ....	300 Birnie Ave. ....01107
<b>MICHIGAN</b>	<b>LANSING</b>
Lorenz Service Co. ....	2500 S. Pennsylvania ....48910
Power Equipment Dist. ....	<b>MOUNT CLEMENS</b>
<b>MINNESOTA</b>	36463 South Gratiot ....48043
Hance Distributing Inc. ....	<b>HOPKINS</b>
<b>MISSISSIPPI</b>	420 Excelsior Ave. W. ....55343
Biloxi Sales & Service, Inc. ....	<b>BILOXI</b>
<b>MISSOURI</b>	506 Caillavet St. ....39533
Automotive Equip. Service ....	<b>KANSAS CITY</b>
Ross-Frazier Supply Co. ....	3117 Holmes St. ....64109
	<b>ST. JOSEPH</b>
	8th and Monterey ....64503
	<b>ST. LOUIS</b>
Henzler, Inc. ....	2015 Lemay Ferry Road 63125
<b>NEW JERSEY</b>	<b>BELLMAR</b>
Lawnmower Parts Inc. ....	717 Creek Rd. ....08030
<b>NEW YORK</b>	<b>CARTHAGE</b>
Gamble Dist., Inc. ....	West End Ave. ....13619

## BRIGGS AND STRATTON, TECUMSEH AND PEERLESS PARTS AND SERVICE

Briggs & Stratton, Tecumseh and Peerless parts and service should be handled by your nearest authorized engine service firm. Check the yellow pages of your telephone directory under the listing **Engines—Gasoline**, Briggs & Stratton or Tecumseh, Lauson.

<b>NORTH CAROLINA</b>	<b>GOLDSBORO</b>
Smith Hardware Co. ....	515 N. George St. ....27530
Dixie Sales Company ....	<b>GREENSBORO</b>
<b>OHIO</b>	335 N. Green ....27402
Stebes Mid-State Mower Supply ....	<b>CARROLL</b>
	Box 366, 71 High St. ....43112
Bleckrie, Inc. ....	<b>CLEVELAND</b>
National Central ....	7900 Lorain Ave. ....44102
Burton Supply Co. ....	<b>WADSWORTH</b>
	687 Seville Rd. ....44281
	<b>YOUNGSTOWN</b>
	1301 Logan Ave. ....44501
<b>OKLAHOMA</b>	Box 929 ....44501
Victory Motors, Inc. ....	<b>MUSKOGEE</b>
	605 S. Cherokee ....74401
Forest Sales Inc. ....	<b>OKLAHOMA CITY</b>
<b>OREGON</b>	6415 N. Olie ....73116
Kenton Supply Co. ....	<b>PORTLAND</b>
<b>PENNSYLVANIA</b>	8216 N. Denver Ave. ....97217
Stull Equipment Corp. ....	<b>CHESTER</b>
	742 W. Front St. ....19013
EECO Inc. ....	<b>HARRISBURG</b>
Thompson Rubber Co. ....	4021 N. 6th St. ....17110
Bluemont Co. ....	<b>PHILADELPHIA</b>
Frank Roberts & Sons ....	5222-24 N. Fifth St. ....19120
<b>TENNESSEE</b>	<b>PITTSBURGH</b>
Master Repair Service ....	11125 Frankstown Rd. ....15235
	<b>PUNXSUTAWNEY</b>
American Sales & Service, Inc. ....	R.D. 2 ....15767
<b>TEXAS</b>	<b>KNOXVILLE</b>
Marr Brothers, Inc. ....	2000 Western Ave. ....3792
Woodson Sales Corp. ....	<b>MEMPHIS</b>
Bullard Supply Co. ....	1922 Lynnbrook ....38116
Catto & Putty, Inc. ....	<b>DALLAS</b>
<b>UTAH</b>	423 E. Jefferson ....75203
A-1 Engine & Mower Co. ....	<b>FORT WORTH</b>
<b>VERMONT</b>	1702 N. Sylvania ....76111
Vermont Hdwe. Co. Inc. ....	<b>HOUSTON</b>
<b>VIRGINIA</b>	2409 Commerce St. ....77003
RBI Corp. ....	<b>SAN ANTONIO</b>
<b>WASHINGTON</b>	414 Live Oak ....78298
Bailey's Inc. ....	<b>SALT LAKE CITY</b>
<b>WEST VIRGINIA</b>	437 E. 9th St. ....84111
Young's, Inc. ....	<b>BURLINGTON</b>
<b>WISCONSIN</b>	180 Flynn Ave. ....05401
Power Pac ....	<b>RICHMOND</b>
	963 Myers St. ....23260
	<b>SEATTLE</b>
	1414 14th Ave. ....98102
	<b>CHARLESTON</b>
	233 Virginia St., E. ....25301
	<b>MARSHFIELD</b>
	301 E. 29th St. ....54449

## WARRANTY PARTS AND SERVICE POLICY

The purpose of warranty is to protect the customer from defects in workmanship and materials, defects which are NOT detected at the time of manufacture. It does not provide for the unlimited and unrestricted replacement of parts. Use and maintenance are the responsibility of the customer. The manufacturer cannot assume responsibility for conditions over which it has no control. Simply put, if it's the manufacturer's fault, it's the manufacturer's responsibility; if it's the customer's fault, it's the customer's responsibility.

### CLAIMS AGAINST THE MANUFACTURER'S WARRANTY INCLUDES:

1. Replacement of Missing Parts on new equipment.
2. Replacement of Defective Parts within the warranty period.
3. Repair of Defects within the warranty period.

All claims MUST be substantiated with the following information:

1. Model Number of unit involved.
2. Date unit was purchased or first put into service.
3. Date of failure.
4. Nature of failure.

**MTD PRODUCTS • 5965 GRAFTON ROAD • P.O. BOX 36900 • CLEVELAND, OHIO 44136**