

# OWNER'S MANUAL

## 20" & 22" ROTARY MOWERS

### Model Numbers

113-074A

113-084A

113-154A

113-164A

**Important:**  
**Read Safety Rules and**  
**Instructions Carefully**

Thank you for purchasing an  
American built product.

# INDEX

Safe Operation Practices .....	3	Maintenance .....	9
Assembly .....	4	Off-Season Storage .....	12
Controls .....	7	Illustrated Parts for Models 074 and 084 .....	14, 15
Operation .....	7	Illustrated Parts for Models 154 and 164 .....	16, 17
Adjustments .....	8	Parts Information .....	Back Cover
Lubrication .....	9		

## LIMITED WARRANTY

For one year from the date of original retail purchase, MTD PRODUCTS INC will either repair or replace, at its option, free of charge, F.O.B. factory or authorized service firm, any part or parts found to be defective in material or workmanship. Transportation charges for the movement of any power equipment unit or attachment are the responsibility of the purchaser. Transportation charges for any parts submitted for replacement under this warranty must be paid by the purchaser unless such return is requested by MTD PRODUCTS INC.

This warranty will not apply to any part which has become inoperative due to misuse, excessive use, accident, neglect, improper maintenance, alterations, or unless the unit has been operated and maintained in accordance with the instructions furnished. This warranty does not apply to the engine, motor, battery, battery charger or component parts thereof. Please refer to the applicable manufacturer's warranty on these items.

This warranty will not apply where the unit has been used commercially.

Warranty service is available through your local authorized service dealer or distributor. If you do not know the dealer or distributor in your area, please write to the Customer Service Department of MTD.

The return of a complete unit will not be accepted by the factory unless prior written permission has been extended by MTD.

This warranty gives you specific legal rights. You may also have other rights which vary from state to state.



This unit is equipped with an internal combustion engine and should not be used on or near any unimproved forest-covered, brush-covered or grass-covered land unless the engine's exhaust system is equipped with a spark arrester meeting applicable local or state laws (if any). If a spark arrester is used, it should be maintained in effective working order by the operator.

In the State of California the above is required by law (Section 4442 of the California Public Resources Code). Other states may have similar laws. Federal laws apply on federal lands. A spark arrester muffler is available at your nearest engine authorized service center.



## WARNING

To reduce the potential for any injury, comply with the following safety instructions. Failure to comply with the instructions may result in personal injury.

# SAFE OPERATION PRACTICES FOR WALK-BEHIND MOWERS

## TRAINING

1. Read this owner's manual carefully in its entirety before attempting to assemble or operate this machine. Be completely familiar with the controls and the proper use of this machine before operating it. Keep this manual in a safe place for future and regular reference and for ordering replacement parts.
2. Your rotary mower is a precision piece of power equipment, not a plaything. Therefore, exercise extreme caution at all times.
3. Never allow children to operate a power mower. Only persons well acquainted with these rules of safe operation should be allowed to use your mower.
4. Keep the area of operation clear of all persons, particularly small children and pets. Stop engine when they are in the vicinity of your mower. Although the area of operation should be completely cleared of foreign objects, an object may have been overlooked and could be accidentally thrown by the mower in any direction and cause serious personal injury to the operator or any others allowed in the area.

## PREPARATION

1. Thoroughly inspect the area where the equipment is to be used. Remove all stones, sticks, wire, bones and other foreign objects which could be picked up and thrown by the mower in any direction and cause serious personal injury to the operator or any others allowed in the area.
2. Do not operate equipment when barefoot or wearing open sandals. Always wear substantial footwear.
3. Do not wear loose fitting clothing that could get caught on the mower.
4. Check the fuel before starting the engine. Gasoline is an extremely flammable fuel. Do not fill the gasoline tank indoors, while the engine is running, or while the engine is still hot. Wipe off any spilled gasoline before starting the engine as it may cause a fire or explosion.
5. Disengage the self-propelled mechanism or drive clutch on units so equipped before starting the engine.
6. The blade control handle is a safety device. Never attempt to bypass its operation. Doing so makes the safety device inoperative and may result in personal injury through contact with the rotating blade. The blade control handle must operate easily in both directions.
7. Never attempt to make a wheel or cutting height adjustment while the engine is running.
8. Mow only in daylight or in good artificial light.
9. Never operate the equipment in wet grass. Always be sure of your footing. A slip and fall can cause serious personal injury. Keep a firm hold on the handle and walk, never run.

## OPERATION

1. Do not change the engine governor settings or overspeed the engine. Excessive engine speeds are dangerous.
2. Do not put hands or feet near or under rotating parts. Keep clear of the discharge opening at all times as the rotating blade can cause injury.
3. Stop the blade when crossing gravel drives, walks or roads.
4. After striking a foreign object, stop the engine, remove the wire from the spark plug, and thoroughly inspect the mower for any damage. Repair the damage before restarting and operating the mower.
5. If the equipment should start to vibrate abnormally, stop the engine and check immediately for the cause. Vibration is generally a warning of trouble.
6. Shut the engine off and wait until the blade comes to a complete stop before removing the grass catcher or unclogging the chute. The cutting blade continues to rotate for a few seconds after the engine is shut off. Never place any part of the body in the blade area until you are sure the blade has stopped rotating.
7. Before cleaning, repairing or inspecting, make certain the blade and all moving parts have stopped. Disconnect the spark plug wire, and keep the wire away from the spark plug to prevent accidental starting.
8. Do not run the engine indoors.
9. Mow across the face of slopes, never up-and-down. Exercise extreme caution when changing direction on slopes. Do not mow excessively steep slopes. Always be sure of your footing. A slip and fall can cause serious personal injury.
10. Always disconnect electric mowers (line operated) before cleaning, repairing or adjusting.
11. Never operate mower without proper guards, plates or other safety protective devices in place.

## MAINTENANCE AND STORAGE

1. Check the blade and engine mounting bolts at frequent intervals for proper tightness.
2. Keep all nuts, bolts, and screws tight to be sure the equipment is in safe working condition.
3. Never store the equipment with gasoline in the tank inside of a building where fumes may reach an open flame or spark. Allow the engine to cool before storing in any enclosure.
4. To reduce fire hazard, keep the engine free of grass, leaves, or excessive grease.
5. Check the grass catcher bag frequently for wear or deterioration. For safety protection, replace only with new bag meeting original equipment specifications.

# SAFE OPERATION PRACTICES (Continued)

## BLADE BRAKE/CLUTCH MAINTENANCE

**NOTE:** Any required repair work on the blade brake/clutch should be performed by an authorized service dealer. If you cannot locate an authorized service dealer, contact the manufacturer as set forth on your copy of the Owner's Registration Card.

1. The blade brake/clutch hand control is a safety device. Never attempt to bypass its operation. Doing so makes the safety device inoperative and may result in personal injury through contact with the rotating blade. This hand control must operate freely in both directions.
2. Striking a solid object can cause damage to the blade brake/clutch or to the engine crankshaft. Extensive vibration of the mower during operation is an indication of damage

and the unit should be promptly inspected and repaired.

3. A leak in the lower engine crankshaft oil seal could expose the blade brake/clutch friction pads to excess oil resulting in blade or brake slippage, which could increase the stopping time of the blade. Oil collection on the floor beneath the mower during storage may be an indication of an oil seal leak. The unit should be checked by an authorized service dealer.
4. Periodically inspect the inner control cable in the area where it attaches to the hand control. If the cable becomes frayed, it could cause the blade brake/clutch to operate improperly. Also, be careful to avoid pinching the blade brake/clutch control cable when using the folding handle feature (on units so equipped).



### NOTE

This unit is shipped WITHOUT GASOLINE or OIL. After assembly, see separate engine manual for proper fuel and engine oil recommendations.

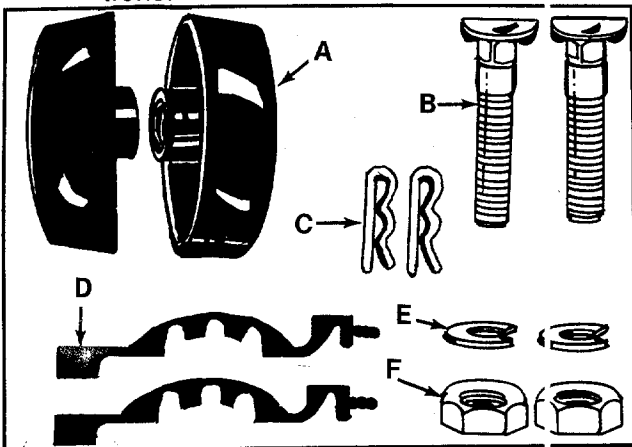


FIGURE 1.

## ASSEMBLY



### NOTE

This owner's manual covers various models of mowers. The unit shown in the photographs may be different than your unit.

### ← Contents of hardware pack: (See figure 1)

- A (2) Hand Knobs (Folding Handle Only)
  - B (2) Curved Carriage Bolts
  - C (2) Hairpin Cotters
  - D (2) Cable Ties
  - E (2) Lock Washers (Non-Folding Handle Only)
  - F (2) Hex Nuts (Non-Folding Handle Only)
1. Remove the lawn mower, loose parts, hardware pack and literature from the carton. Make certain all parts and literature have been removed before the carton is discarded.
  2. Extend the throttle control cable (attached to the upper handle) and the blade brake/clutch cable (attached to the engine) and place on the floor. Be careful not to bend or kink control cables.
  3. Place lower handle in position over weld pins in handle mount brackets on deck. Make certain the instruction label on the lower handle can be read from the operating position. Secure by placing two hairpin cotters (C) in inner hole on weld pins. See figure 2.



### NOTE

It may be necessary to bend the ends of the lower handle outward slightly to obtain a snug fit against the bracket.



### NOTE

There are two (2) holes in the handle mount brackets. Place hairpin cotter in the inner hole for operation. The outer hole is for storage.

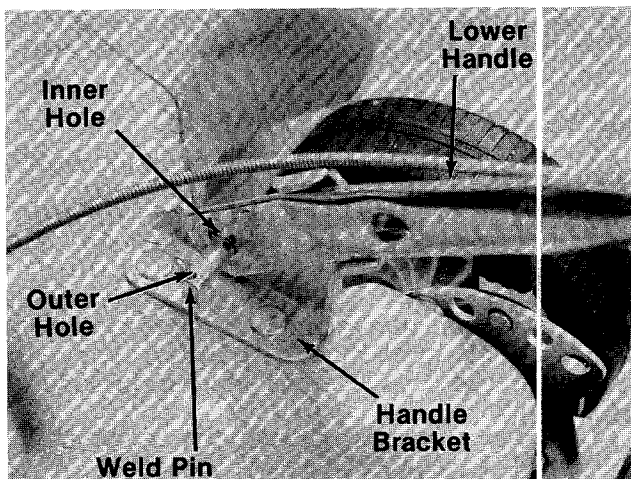


FIGURE 2.

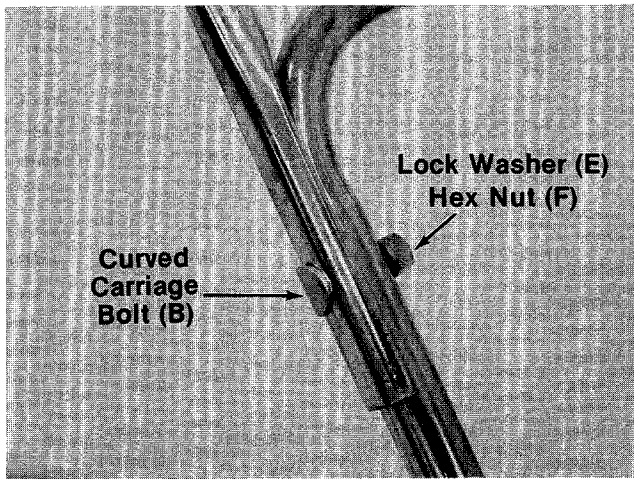


FIGURE 3.

4. Place upper handle in position over lower handle. Control housing should be on the **right** side of the handle.

**NOTE**

Reference to left or right side of machine is determined from operator's position at the handle facing forward.

- A. **Units with Non-Folding Handle**—Secure upper handle with two curved carriage bolts (B), lock washers (E) and hex nuts (F). See figure 3.

- B. **Units with Folding Handle**—Secure with two carriage bolts (B) and hand knobs (A). The knobs can be either to the inside or outside of the handle.

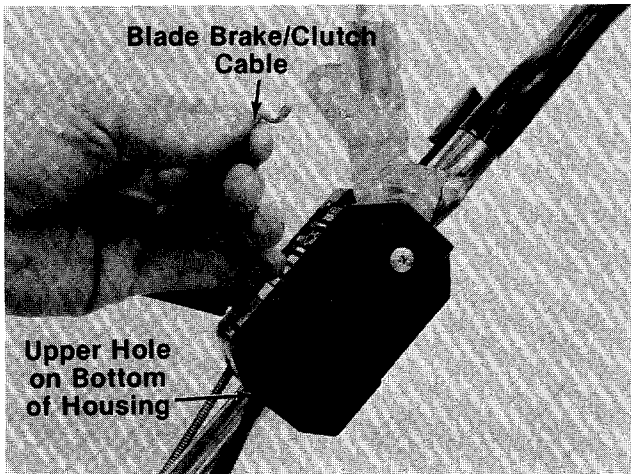


FIGURE 4.

5. Place the end of the blade brake/clutch cable into the upper hole on the bottom of the throttle control housing, and through the slot as shown in figure 4. Be careful not to bend or kink the cable.

**NOTE**

The control cables must be assembled under the lower handle.

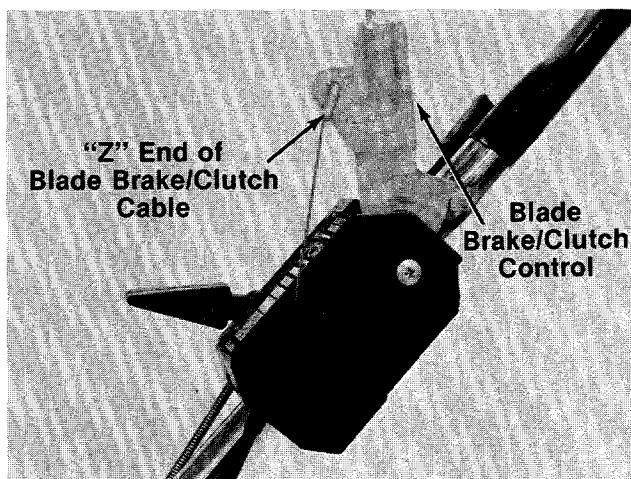


FIGURE 5.

6. Snap the end of the cable into the throttle control housing.
7. Hook the "Z" end of the blade brake/clutch cable into blade brake/clutch control handle. See figure 5.

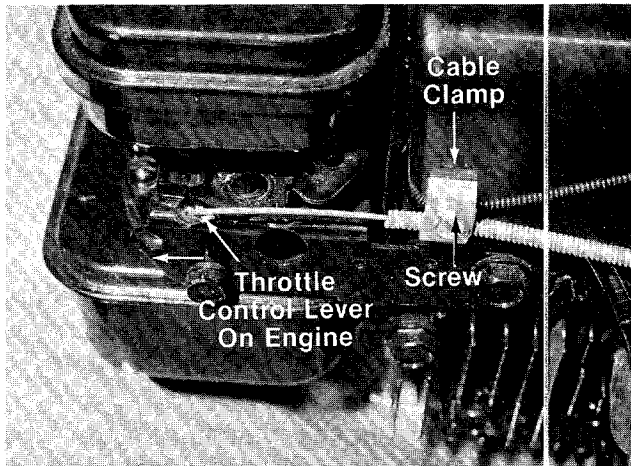


FIGURE 6.

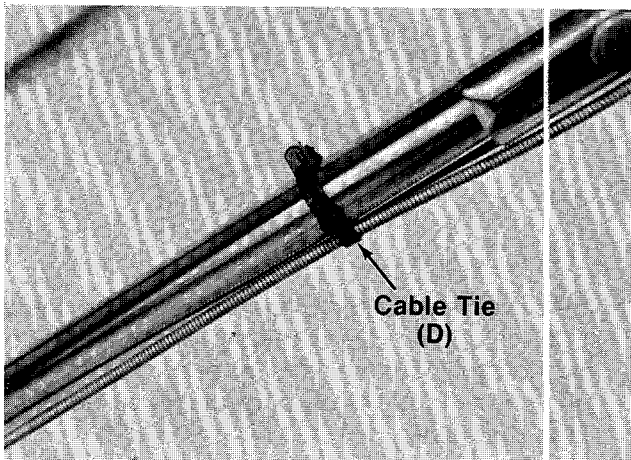


FIGURE 7.

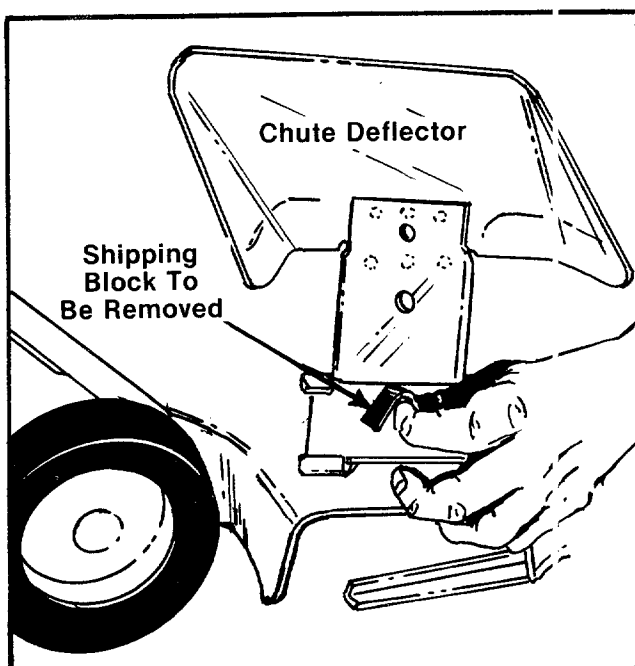


FIGURE 8.

8. Place the throttle control lever on the handle in "Fast" position.
9. Push the throttle control lever on the engine to the full open position (as far toward the outside of the unit as it will go) as shown in figure 6.
10. Hook the "Z" end of the throttle control cable into the hole in the control lever on the engine.
11. Loosen (do not remove) the screw on the cable clamp shown in figure 6. Slip the control casing under the clamp. With the throttle lever on the engine still in the full open position, tighten the screw to secure the throttle control cable.

12. Secure throttle control cable and blade brake/clutch cable to upper and lower handles with cable ties (D) provided. See figure 7.
13. Check **all** nuts and bolts for correct tightness.

**⚠ CAUTION**

Please note that the chute deflector on your mower is in an upright position. It is held in that position by a shipping block. This block is used for shipping purposes only. It must be removed and discarded before your mower is put into operation. See figure 8.

# CONTROLS

## THROTTLE CONTROL

The throttle is located on the right side of handle. It controls engine speed. See figure 9.

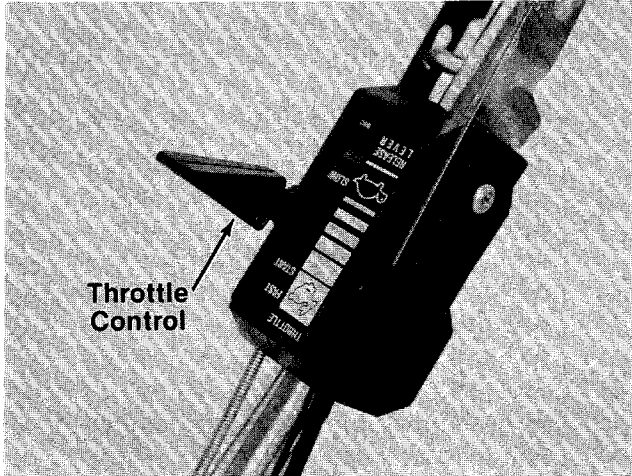


FIGURE 9.

## BLADE BRAKE/CLUTCH CONTROL

**WARNING**  
THIS CONTROL MECHANISM IS A SAFETY DEVICE. NEVER ATTEMPT TO BYPASS ITS OPERATIONS

The blade brake/clutch control is located on the upper handle of the mower. The clutch handle engages and disengages the blade.

To engage the blade, pull the side release lever away from the unit. See figure 10. Pull the clutch control handle against the upper handle. Release side lever.

Release the clutch control handle to stop the blade from turning.



If the engine should stall when the blade is engaged, move the throttle control lever to a faster engine speed.

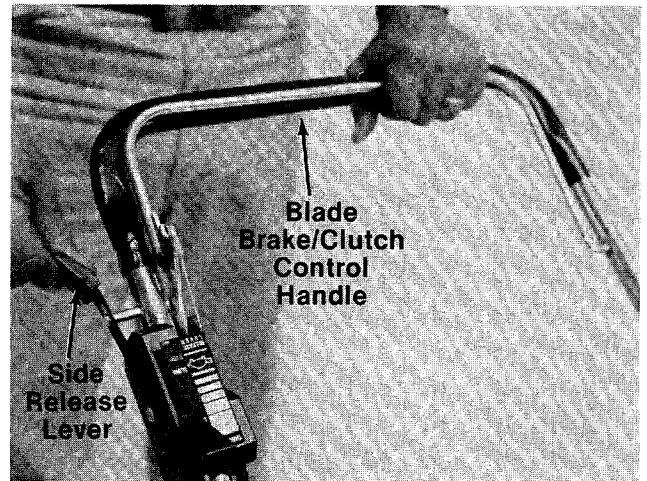


FIGURE 10.

# OPERATION



FIGURE 11.

Keep hands and feet away from the chute area on cutting deck. See figure 11.



For shipping purposes your mower is set with the wheels in a low cutting height position. For best results raise the cutting position until it is determined which height is best for your lawn. See cutting height adjustment.

## BEFORE STARTING

1. Fill sump with oil, as instructed in the separate engine manual packed with your unit.
2. Fill fuel tank, using clean, fresh, lead-free, low-lead or **regular** grade leaded gasoline. Fill tank completely!

**DO NOT MIX OIL WITH GASOLINE.**

3. Attach spark plug wire to spark plug.

## START ENGINE

1. Move throttle control lever to "START" position.
2. With the blade brake/clutch control **released**, crank engine by pulling recoil starter with a quick firm pull. Do not pull out so far that rope stops with a jerk as this will cause rope failure. Do not allow rope and handle to snap back into place.
3. After two or three full firm pulls on recoil, or as soon as engine starts, move throttle control to desired engine speed.

## TO STOP

1. Release the blade brake/clutch handle to stop the blade. To stop engine, move throttle control lever to "STOP" position.
2. Remove spark plug wire from spark plug to prevent accidental starting while equipment is unattended.

## USING YOUR ROTARY MOWER

Be sure that lawn is clear of stones, sticks, wire, or other objects which could damage lawn mower or engine. Such objects could be accidentally thrown by the mower in any direction and cause serious personal injury to the operator and others.

Operate a new engine at intermediate speeds and light load for the first few hours as you would a new automotive engine.

For best results, do not cut wet grass because it tends to stick to the underside of the mower, preventing proper discharge of grass clippings, and could cause you to slip and fall. New grass, thick grass or wet grass may require a narrower cut. Blade speed should be adjusted to the condition of the lawn.

The best mowing pattern is one that allows the clippings to discharge towards the uncut part of the lawn. This permits recutting of the clippings to further pulverize them. When cutting high weeds, discharge towards cut portion, then recut at right angles to first direction.

For best results, cut off one-third or less of the total length of the grass. Lawn should be cut in the fall as long as there is growth.

This mower is designed to be operated at full throttle to give you the best cut and do the most effective job of bagging the cut grass.



## IMPORTANT

If you strike a foreign object, stop the engine. Remove wire from spark plug, thoroughly inspect the mower for any damage, and repair the damage before restarting and operating the mower.

Striking a solid object can cause damage to the blade brake/clutch or to the engine crankshaft. Extensive vibration of the mower during operation is an indication of damage. The unit should be promptly inspected and repaired.

## ADJUSTMENTS



## CAUTION

Do not at any time make any adjustment to lawn mower without first stopping engine and disconnecting spark plug wire.

## CUTTING HEIGHT ADJUSTMENT

An adjusting plate and thumb lever at each wheel position provides cutting height adjustment. Each adjusting plate has nine positions for models 074 and 084 and five positions for models 154 and 164. Height of cut will be changed when the thumb lever is moved from one position to another. Simply depress thumb lever towards wheel and move wheel and lever assembly to desired position. All wheels must be placed in the same relative position.

## THROTTLE

If adjustment becomes necessary, the throttle control wire assembly can be reset as follows:

1. Loosen, but do not remove, screw securing throttle control wire assembly at engine. See figure 12.



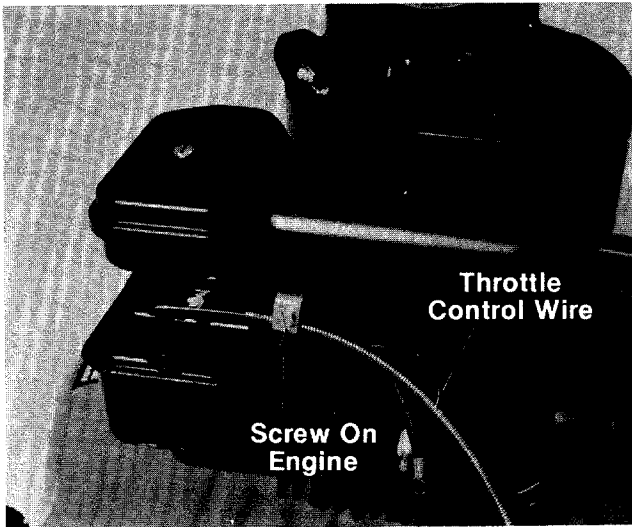


FIGURE 12.

2. Move throttle control lever on handle to "FAST" position.
3. Move control lever on engine to full open position. Retighten screw to secure throttle control wire assembly.

#### CARBURETOR ADJUSTMENTS



If any adjustments are made to the engine while the engine is running (e.g. carburetor), disengage all clutches and blades. Keep clear of all moving parts. Be careful of heated surfaces and muffler.

Minor carburetor adjustment may be required to compensate for differences in fuel, temperature, altitude and load.

To adjust carburetor, refer to the separate engine manual packed with your mower.

#### LUBRICATION



Always stop engine and disconnect spark plug wire before cleaning, lubricating or doing any kind of work on lawn mower.

**Blade Brake/Clutch**—Lubricate the pivot points on the blade brake/clutch handle and the cable at least once a season with light oil. The control must operate freely in both directions.

**Chute Deflector**—The torsion spring and pivot point should be lubricated periodically with light oil to prevent any rust or binding. Deflector must work freely.

**Wheels**—Mower may be provided with ball bearing wheels. Lubricate at least once a season with light oil. Also, if the wheels are removed for any reason, lubricate the surface of the axle bolt and the inner surface of the wheel with light oil. A 4 oz. plastic bottle of light oil lubricant is available. Order part number 737-0170. Engine oil may also be used.

**Engine**—Follow engine manual for lubrication instructions.

**Throttle**—Periodically lubricate throttle control lever and throttle wire assembly with a few drops of light oil for ease of operation.

### MAINTENANCE



Be sure to disconnect and ground the spark plug wire before performing any repairs or maintenance.



When tipping the unit, empty the fuel tank and keep engine spark plug side up.

#### CUTTING BLADE

To remove the cutting blade for sharpening or replacement, remove the two hex nuts and lock washers which hold the blade to the blade brake/clutch. See figure 13.

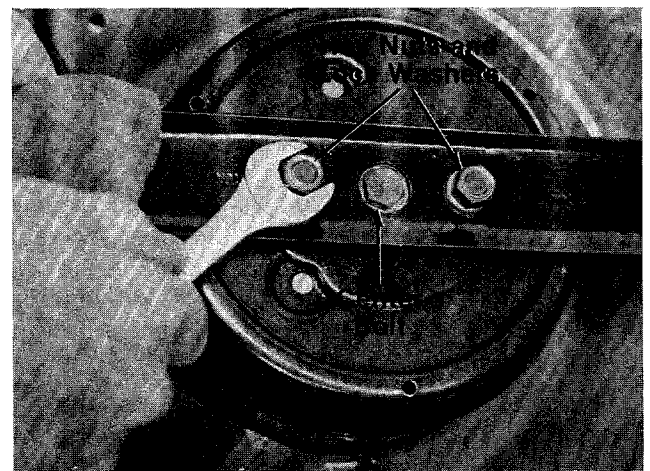


FIGURE 13.

When sharpening the blade, follow the original angle of grind as a guide. It is **extremely important** that each cutting edge receives an equal amount of grinding to prevent an unbalanced blade. An unbalanced blade will cause excessive vibration when rotating at high speeds, may cause damage to the mower and could break, causing personal injury.

The blade can be tested for balance by balancing it on a round shaft screwdriver. Remove metal from the heavy side until it balances evenly.

When replacing the blade, be sure to install the blade with the side of the blade marked "Bottom" (or with part number) facing the ground when the mower is in the operating position.

### Blade Mounting Torque

Make certain that the center bolt which secures the blade brake/clutch and the two hex nuts which secure the blade are tightened to between 350 inch pounds (minimum) and 600 inch pounds (maximum).

To insure safe operation of your unit, **all nuts and bolts** must be checked periodically for correct tightness.

### DECK

The underside of mower deck should be cleaned after each period of use as grass clippings, leaves, dirt and other matter will accumulate. This accumulation of grass clippings, etc., is undesirable as it will invite rust and corrosion and may cause an uneven discharge of grass clippings at the next cutting.

The deck may be cleaned by tilting the mower forward or on its side and scraping clear with a suitable tool or by washing with a stream of water from a garden hose.



### CAUTION

Do not direct the stream of water at a hot engine as damage to the engine may result.

### ENGINE OIL

Check oil level before starting and after every 5 hours of operation. **ADD** oil as necessary to keep level to full mark on dipstick. Before removing dipstick, clean area around dipstick to prevent dirt from entering oil fill tube. Engine should be in a level position when checking oil.

Change oil after first 5 hours of operation. Thereafter change every 25 hours. Change oil while engine is warm. Oil may be drained thru oil fill opening by tipping the unit on its side. Oil capacity 1-1/4 pints.

### AIR CLEANER

Service air cleaner every 25 hours under normal conditions. Clean every few hours under extremely dusty conditions. Poor engine performance and flooding usually indicates that the air cleaner should be serviced.

To service air cleaner, refer to the separate engine manual packed with your mower.

### SPARK PLUG

The spark plug should be cleaned and the gap reset once a season. Spark plug replacement is recommended at the start of each mowing season; check engine manual for correct plug type and gap specifications.

### BLADE BRAKE/CLUTCH

This unit is equipped with a blade brake/clutch. If for some reason the blade brake/clutch becomes inoperative, it is suggested that all repair work on the blade brake/clutch be performed by an authorized service dealer. The unit should be inspected by an authorized service dealer if any of the following conditions are noticed.

1. Frayed clutch control cable.
2. Leaking oil seal (oil collection on the floor during mower storage).
3. Extensive vibration of the unit.

### Blade Brake/Clutch Removal

1. Disconnect the spark plug wire and ground it against the engine block.
2. Empty fuel tank and drain oil from crankcase.
3. Remove the cable ties which secure control cables to the handle.
4. Remove one truss machine screw on the inside of control housing as shown in figure 14. Loosen the truss machine screw on the outside of the control housing until the two halves of control housing can be separated enough for the control cable to be freed.

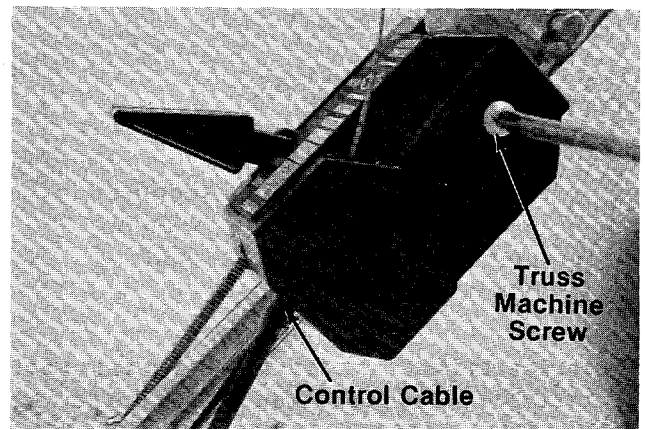
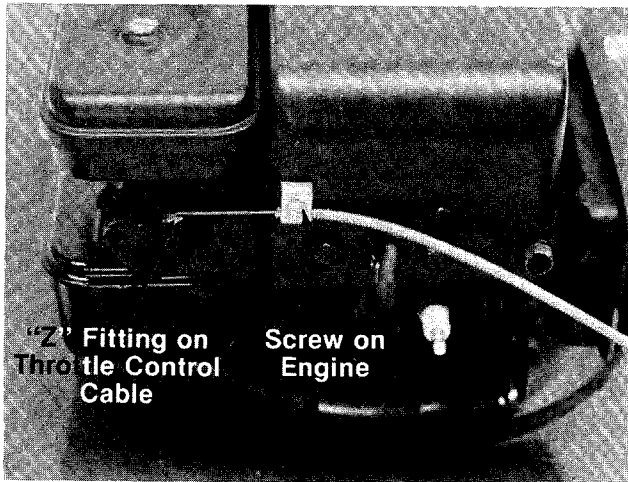


FIGURE 14.

5. Disconnect the "Z" fitting on the blade brake/clutch cable from the clutch control handle. Slide the blade brake/clutch cable out of the control housing.
6. Disconnect the throttle control cable from the engine by loosening screw on engine and disconnecting the "Z" fitting. See figure 15.



**FIGURE 15.**

7. Tip the mower on its side. Remove the blade by removing two hex nuts and lock washers. Refer to figure 13.

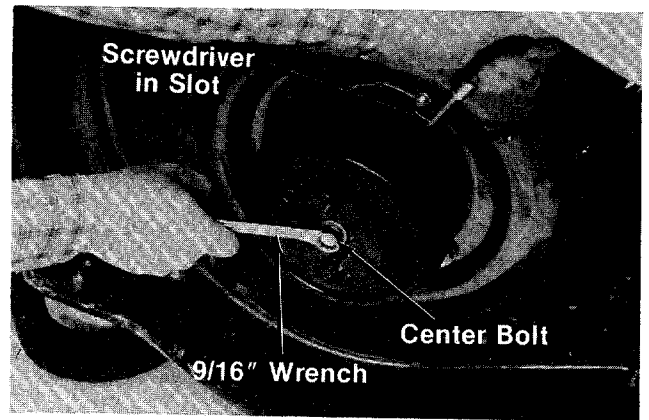
**NOTE**

When reassembling, tighten hex nuts to between 350 and 600 in. lbs.

8. Remove the center bolt as follows.
  - a. Insert a screwdriver into the slot provided in the blade brake/clutch housing where the control cable enters housing. See figure 16.
  - b. Place a 9/16" wrench on the center bolt. Turn the wrench slowly until the screwdriver catches in a groove provided inside the clutch. The screwdriver will now keep the clutch from turning, and the center bolt and two belleville washers may be removed.

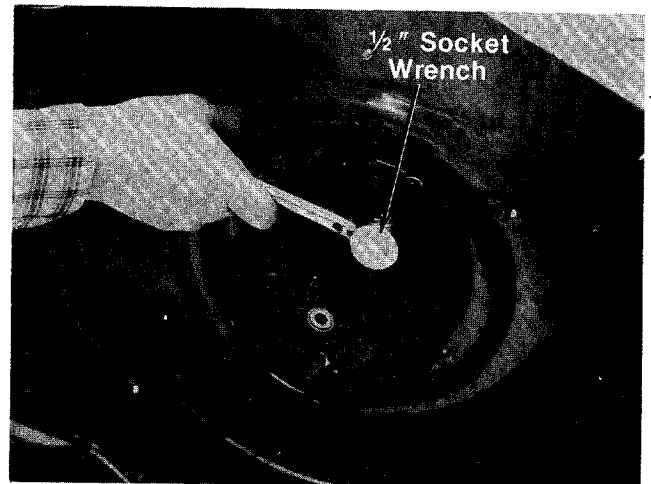
**IMPORTANT**

Upon reassembly, be certain to tighten center bolt to between 350 and 600 in. lbs.



**FIGURE 16.**

9. Support the engine with one hand. Remove the three self-tapping screws which secure the deck and blade brake/clutch to the engine. A 1/2" socket wrench is required. See figure 17.



**FIGURE 17.**

10. Slide the blade brake/clutch cable through the hole in the deck as you lift off the engine and blade brake/clutch. Be careful not to kink control cable.
11. Remove blade brake/clutch from engine crankshaft.

**Blade Brake/Clutch Installation**

1. Place the new blade brake/clutch on engine crankshaft. Line up holes on blade brake/clutch with mounting holes on engine.
2. Place the two belleville washers onto crankshaft. Cupped side of washers must be against the blade brake/clutch. Secure with hex bolt finger tight only.
3. Place cable through engine mounting hole on deck.
4. Reverse steps 1 through 10 of preceding section for reassembly.

## OFF-SEASON STORAGE

The following steps should be taken to prepare lawn mower for storage.

1. Clean and lubricate mower thoroughly as described in the lubrication instructions.
2. Refer to engine manual for correct engine storage instructions.
3. Coat mower's cutting blade with chassis grease to prevent rusting.
4. Store mower in a dry, clean area.

## HANDLE STORAGE

The handle can be stored in an upright position to take less space. Move hairpin cotters to outer hole on weld pins (see figure 2). Grasp the lower handle at the bottom and pull apart slightly. Tip the handle forward. It will lock in this position. Reverse this procedure to place the handle in the operating position.

Units equipped with hand knobs may also be folded away completely for storage.



### CAUTION

Be careful not to kink or pinch blade brake/clutch cable when folding the handle for storage.

1. Remove hairpin cotters from inner hole on weld pins on handle mount brackets. Place in outer hole.
2. Loosen the two hand knobs on the sides of the handle.
3. Pull inward on the bottom of each side of the lower handle, and push forward.
4. Fold the upper handle back and down.

To take the handle out of storage position, proceed as follows.

1. Lift the upper handle up and towards the rear.
2. Pull the handle back until it locks into the operator's position.
3. Tighten the two hand knobs securely.
4. Move the hairpin cotters to the inner hole on the weld pins.



### NOTE

The use of any accessory on this Rotary Mower other than those manufactured by the mower manufacturer is **not** recommended.

GRASS CATCHER Model 003 is available as optional equipment for the mower shown in this manual.



### WARNING

1. DO NOT operate the mower without the entire grass catcher or chute deflector in place.
2. DO NOT operate the mower without the protective shield on the rear of the deck in place.



### NOTE

Under normal usage bag material is subject to wear and should be checked periodically. Be sure any replacement bag complies with the mower manufacturer's recommendations.

For replacement bags, use only factory authorized replacement bag No. 764-0176.

# NOTES

A large, empty rectangular box with a black border, occupying most of the page. It is intended for the user to write their notes.

# Models 074 and 084

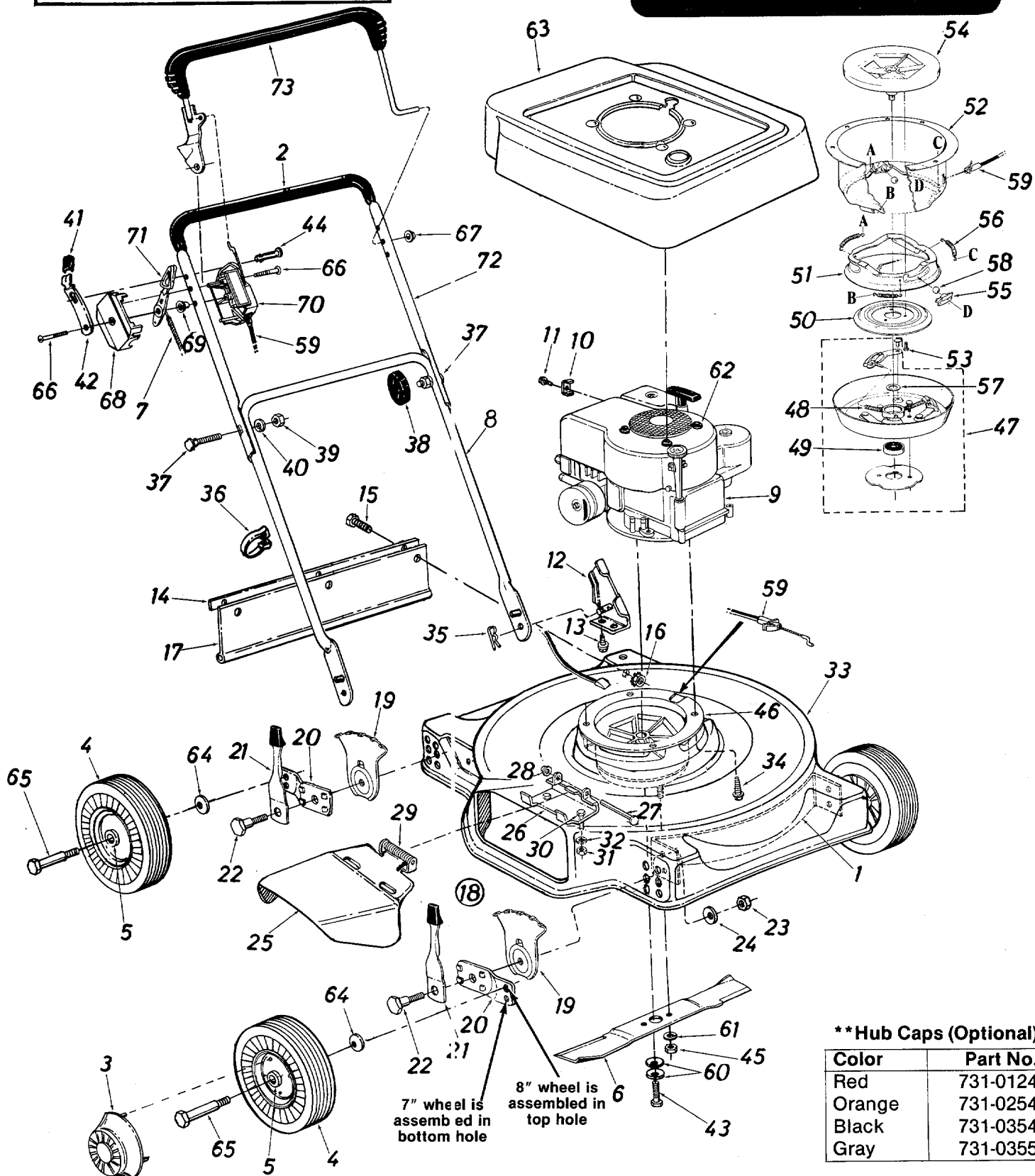


This instruction manual covers various models and all specifications shown do not necessarily apply to your model. Specifications subject to change without notice or obligation.

Meets CPSC Blade Safety Requirements

Lot/Model

Mfg. Date



073 CLUTCH BBC CABLE

746-0402

YELLOW 43"

# Models 074 and 084

## PARTS LIST FOR MODEL 074 AND 084 ROTARY MOWERS

REF. NO.	PART NO.	COLOR CODE	DESCRIPTION	NEW PART	REF. NO.	PART NO.	COLOR CODE	DESCRIPTION	NEW PART
1	14589		Front Baffle 20" (Optional)		38	09966		Hand Knob (Optional)	
	14554		Front Baffle 22" (Optional)		39	712-0267		Hex Nut 5/16-18 Thd.*	
2	718-0145		Grip		40	736-0119		L-Wash. 5/16" I.D.*	
3	**		Hub Cap		41	720-0190		Spring Lever Knob	
4	734-0661		8" Wheel Ass'y. Comp.		42	732-0401		Lock Out Spring	
	734-0876		7" Wheel Ass'y. Comp.		43	710-0818		Hex Cent. L- Bolt 3/8-24 x 2.00" Lg.	
5	741-0262		Flange Brg.—Plastic 1/2" I.D.		44	711-0719		Lock Pin .75" Dia. x 1.80	
6	742-0220		20" Blade (074)		45	712-0328		Special Hex Nut 5/16-24 Thd.	
	742-0222		22" Blade (084)		46	717-0482		Blade Brake Clutch Ass'y. Comp.	
7	746-0473		Throttle Control Wire—39"		47	14300		Clutch Blade Housing Ass'y. Comp. Spring .35" O.D. x 2.00" Lg.	
8	749-0373		Lower Handle (Chrome)		48	732-0396		Ball Brg. .669" I.D. x 1.574" O.D.	
	749-0372		Lower Handle (Painted)		50	14304		Clutching Cone	
9	—		Engine		51	14305		Brake Cup Cone	
10	751-0333		Casing Clamp		52	14306		Clutch Housing	
11	710-0429		Hex B-Tap Scr. #10 x .38" Lg.		53	710-0875		Hex Wash. TT-Tap Cl.-Scr. 1/4-20 x .75" Lg.	
12	12935		Handle Mount Brkt. Ass'y.— L.H.		54	719-0256		Fan Adapter	
	12936		Handle Mount Brkt. Ass'y.— R.H. (Not Shown)		55	731-0520		Ball Block	
13	710-0603		Hex Wash. Hd. B-Tap Scr. 5/16-18 x .50" Lg.		56	732-0397		Extension Spring .35" O.D. x 1.75" Lg.	
14	14531		Retaining Strip		57	736-0333		FI-Wash. .690" I.D. x 1.060" O.D.	
15	710-0258		Hex Bolt 1/4-20 x .62" Lg.*		58	741-0326		Steel Ball .500" Dia.	
16	712-0271		Hex Sems Nut 1/4-20 Thd.*		59	746-0402		Clutch Cable— <del>420"</del> 43"	
17	731-0575		Rear Flap Ass'y.		60	736-0105		Bell-Wash. .400" I.D. x .88" O.D.	
18	14578		Height Adj. Ass'y.—R.H.		61	736-0169		L-Wash. 3/8" I.D.*	
	14579		Height Adj. Ass'y.—L.H. (Not Shown)		62	726-0219		Snap On Scr. #8 x .38 Tap	
19	15261		Height Adj. Plate		63	731-0634		Engine Shroud Ass'y.	
20	15262		Pivot Bar		64	736-0105		Bell-Wash. .400" I.D. x .88" O.D.	
21	14832		Spring Lever w/Knob		65	738-0102		Shld. Bolt .498" Dia. x 1.450	
22	738-0507		Shld. Bolt .500" Dia. x .375		66	710-0796		Truss Mach. Hi-B Tap Scr. #12 x 1.50" Lg.	
23	712-0798		Hex Nut 3/8-16 Thd.*		67	726-0135		Cap Speed Nut 5/16" Rod	
24	736-0331		Bell-Wash. .39" I.D. x 1.13" O.D.		68	731-0523		Control Panel Half	
25	14944		Chute Deflector Ass'y. Comp.	N	69	731-0524		Control Disc Pin	
26	11143		Deflector Hinge Plate		70	731-0526		Clutch Panel Half	
27	711-0555		Pivot Pin		71	731-0528		Throttle Control Lever	
28	726-0106		Cap Speed Nut 1/4" Rod		72	749-0536		Upper Handle (Chrome)	
29	732-0253		Torsion Spring		73	749-0538		Upper Handle (Painted)	
30	710-0289		Hex Bolt 1/4-20 x .50" Lg.*			731-0610		Control Handle Ass'y.—R.H.	
31	712-0287		Hex Nut 1/4-20 Thd.*						
32	736-0329		L-Wash. 1/4" I.D.*						
33	14995		20" Deck Ass'y. <del>W/</del> Baffle	N					
	14998		22" Deck Ass'y.						
34	710-0654		Hex Wash. Hd. TT-Tap Scr. 3/8-16 x 1.00" Lg.						
35	714-0104		Intern. Cot. Pin 5/16" Dia.						
36	726-0192		Cable Tie						
37	710-0671		Curved Carriage Bolt 5/16-18 x 1.38" Lg.						
	710-0405		Curved Carriage Bolt 5/16-18 x 1.75" Lg. (Optional)						

\*For faster service obtain standard nuts, bolts and washers locally. If these items cannot be obtained locally, order by part number and size as shown on parts list.

(462—Red Flake)

When ordering parts, if color or finish is important use the appropriate color code shown above. (e.g. Red Flake Finish—10292 (462).)

NOTE: The engine is not under warranty by the mower manufacturer...If repairs or service is needed on the engine, please contact your nearest authorized engine service outlet. Check the "Yellow Pages" of your telephone book under "Engines—Gasoline."

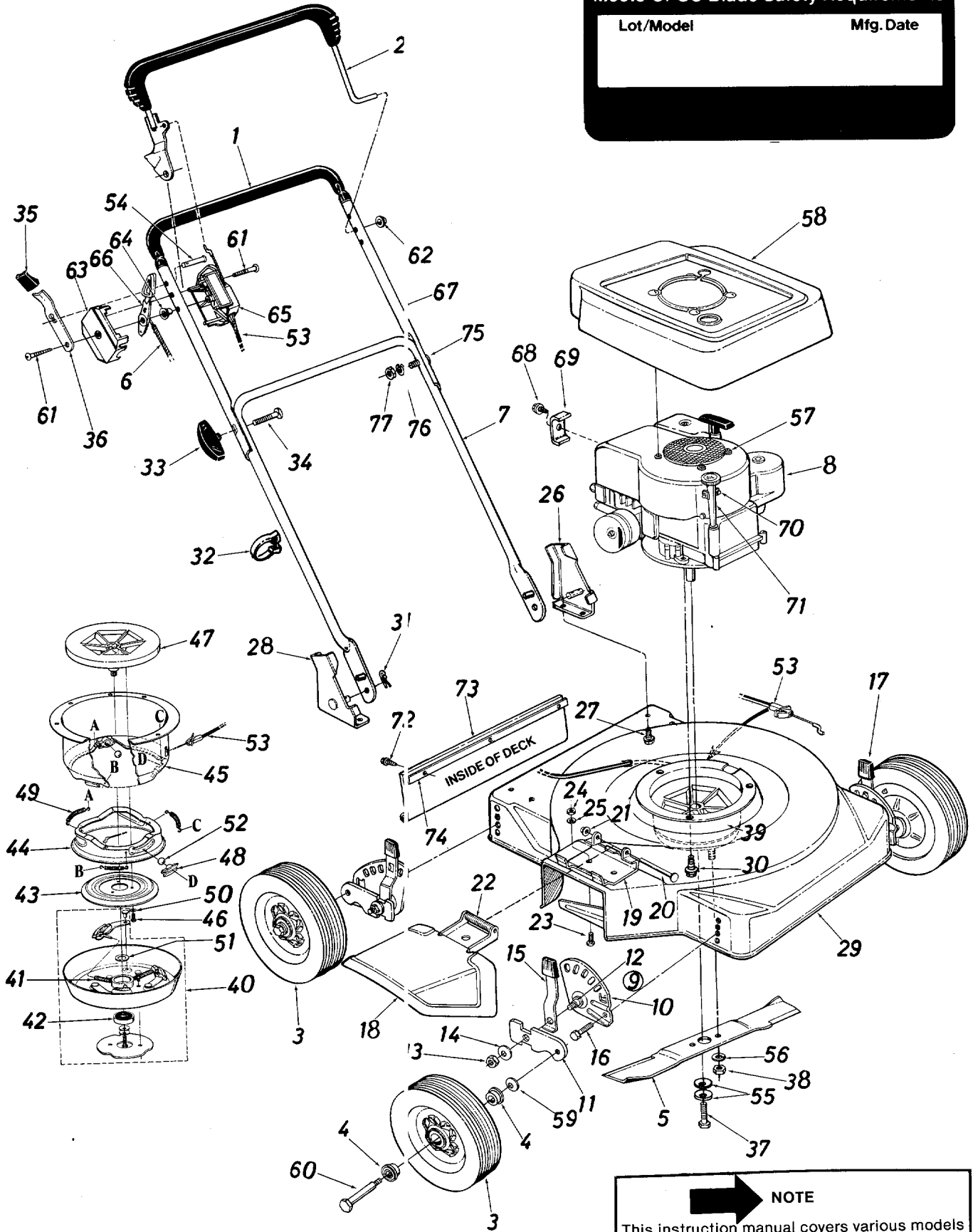


# Models 154 and 164

Meets CPSC Blade Safety Requirements

Lot/Model

Mfg. Date



**NOTE**

This instruction manual covers various models and all specifications shown do not necessarily apply to your model. Specifications subject to change without notice or obligation.



# Models 154 and 164

## PARTS LIST FOR MODELS 154 AND 164 ROTARY MOWERS

REF. NO.	PART NO.	COLOR CODE	DESCRIPTION	NEW PART	REF. NO.	PART NO.	COLOR CODE	DESCRIPTION	NEW PART
1	718-0145		Grip		38	712-0329		Hex Nut 3/8-24 Thd. (Grade 8)	
2	731-0610		Control Handle Ass'y.—R.H.	N	39	717-0480		Blade Brake Clutch Comp.	
3	734-0879		Wheel Ass'y. Comp. 8.0 x 1.75		40	14300		Clutch Blade Housing Ass'y.	
4	741-0262		Flange Bearing—Plastic 1/2" I.D.		41	732-0396		Compression Spring .35" O.D. x 2.00" Lg.	
5	742-0220		20" Blade (154)		42	741-0124		Ball Brg. .669 I.D. x 1.574 O.D.	
	742-0222		22" Blade (164)		43	14304		Clutching Cone	
6	746-0473		Throttle Control Wire 39.0"—Red (154)		44	14305		Brake Cup Cone	
	746-0417		Throttle Control Wire 43.0"—Yellow (164)		45	14306		Clutch Housing	
7	749-0373		Lower Handle (Chrome)		46	710-0642		Hex Tap Scr. 1/4-20 x .75" Lg.	
	749-0372		Lower Handle (Painted)		47	719-0256		Fan Adapter	
8	—		Engine		48	731-0520		Ball Block	
9	10938		Height Adjuster Ass'y.—R.H.		49	732-0397		Extension Spring .35" O.D. x 1.75" Lg.	
10	10934		Index Plate Ass'y.—R.H.		50	736-0175		L-Wash. .270" I.D.	
	10935		Index Plate Ass'y.—L.H.		51	736-0333		Fl-Wash. .690" I.D. x 1.060 O.D.	
11	10937		Pivot Bar		52	741-0326		Steel Ball .500" Dia.	
12	711-0498		Shoulder Bolt		53	746-0400		Clutch Cable—46.0"	
13	712-0116		Hex Ins. L-Nut 3/8-24 Thd.		54	731-0607		Lock Pin .314" Dia. x 1.70"	
14	736-0219		Bell-Wash. .400" I.D. x 1.13" O.D.		55	736-0105		Bell-Wash. .400" I.D. x .88" O.D.	
15	14082		Spring Lever W/Knob		56	736-0169		L-Wash. 3/8" I.D.*	
16	710-0209		Hex Sems Bolt 3/8-16 x .62" Lg.		57	726-0219		Snap-On Scr. #8 x .38" Lg.	
17	10941		Height Adjuster Ass'y.—L.H.		58	731-0635		Engine Shroud Ass'y.	N
18	11679		Chute Deflector Ass'y. Comp.		59	736-0105		Bell-Wash. .400" I.D. x .88" O.D.	
19	11130		Adapter Plate		60	738-0102		Shld. Bolt .498" Dia. x 1.450"	
20	711-0555		Pivot Pin		61	710-0796		Truss Mach. Scr. #12 x 1.50"	
21	726-0106		Push Nut 1/4" Rod		62	726-0135		Cap Speed Nut 5/16" Rod	
22	732-0253		Torsion Spring		63	731-0523		Control Panel Half	
23	710-0289		Hex Bolt 1/4-20 x .50" Lg.*		64	731-0524		Control Disc Pin	
24	712-0287		Hex Nut 1/4-20 Thd.*		65	731-0526		Clutch Panel Half	
25	736-0329		L-Wash. 1/4" I.D.*		66	731-0528		Throttle Control Lever	
26	12935		Handle Mount Brkt. Ass'y.—L.H.		67	749-0536		Upper Handle (Chrome)	
27	710-0603		Hex Wash. Hd. B-Tap. Scr. 5/16-18 x .50" Lg.			749-0538		Upper Handle (Painted)	
28	12936		Handle Mount Brkt. Ass'y.—R.H.		68	710-0429		Hex B-Tap Scr. #10 x .38" Lg.	
29	14909		20" Deck Ass'y. (154)	N	69	751-0333		Casing Clamp	
	14918		22" Deck Ass'y. (164)	N	70	710-0227		Hex Wash. Hd. "AB" Tap Scr. #8 x .50" Lg.	
30	710-0654		Hex Wash. Hd. TT-Tap Scr. 3/8-16 x 1.00" Lg.		71	751-0334		Short Ext. Oil Fill	
31	714-0104		Intern. Cot. Pin 5/16" Dia.		72	710-0776		Hex Wash. Hd. "AB" Tap Scr. 1/4 x .62" Lg.	
32	726-0192		Cable Tie		73	731-0581		Rear Flap Ass'y. (154)	
33	09966		Hand Knob (Optional)			731-0575		Rear Flap Ass'y. (164)	
34	710-0405		Curved Carriage Bolt 5/16-18 x 1.75" Lg. (Optional)		74	14835		Retainer Strip (154)	
35	720-0190		Spring Lever Knob			14836		Retainer Strip (164)	
36	732-0401		Lockout Spring		75	710-0671		Curved Carriage Bolt 5/16-18 x 1.38" Lg.	
37	710-0818		Hex Bolt 3/8-24 x 2.00" Lg. (Grade 8)		76	736-0119		L-Wash. 5/16" I.D.*	
					77	712-0267		Hex Nut 5/16-18 Thd.*	

\*For faster service obtain standard nuts, bolts and washers locally. If these items cannot be obtained locally, order by part number and size as shown on parts list.  
(462—Red Flake)

When ordering parts, if color or finish is important use the appropriate color code shown above. (e.g. Red Flake Finish—10292 (462).)

NOTE: The engine is not under warranty by the mower manufacturer... If repairs or service is needed on the engine, please contact your nearest authorized engine service outlet. Check the "Yellow Pages" of your telephone book under "Engines—Gasoline."



# PARTS INFORMATION

## POWER EQUIPMENT PARTS AND SERVICE

Parts and service are available through the authorized service firms listed below. All orders should specify the model number of your unit, part numbers, description of parts and the quantity of each part required.

## BRIGGS AND STRATTON, TECUMSEH AND PEERLESS PARTS AND SERVICE

Briggs & Stratton, Tecumseh and Peerless parts and service should be handled by your nearest authorized engine service firm. Check the yellow pages of your telephone directory under the listing **Engines—Gasoline**, Briggs & Stratton or Tecumseh Lauson.

**NOTE:** If any parts are found to be missing or defective upon assembly of this unit, write to advise the factory so that immediate replacement can be made.

<b>ALABAMA</b>	<b>BIRMINGHAM</b>	
Auto Electric & Carburetor Co. . . . .	2625 4th Ave. S. . . . .	35233
<b>ARKANSAS</b>	<b>NORTH LITTLE ROCK</b>	
Sutton's Lawn Mower Shop . . . . .	5301 Roundtop Drive Box 368, Rt. 4 . . . . .	72117
<b>CALIFORNIA</b>	<b>PORTERVILLE</b>	
Billious . . . . .	75 North D Street . . . . .	93257
<b>COLORADO</b>	<b>DENVER</b>	
Spitzer Industrial Products Co. . . . .	Box 29114, 6601 N. Washington St. . . . .	80229
<b>FLORIDA</b>	<b>JACKSONVILLE</b>	
Radco Distributors . . . . .	4909 Victor St. Box 5459 . . . . .	32207
	<b>OPA LOCKA</b>	
Small Eng. Dist. . . . .	2351 N.W. 147th St. . . . .	33054
<b>GEORGIA</b>	<b>EAST POINT</b>	
East Point Cycle & Key . . . . .	2834 Church St. . . . .	30344
<b>ILLINOIS</b>	<b>LYONS</b>	
Keen Edge Co. . . . .	8615 Ogden Ave. . . . .	60534
<b>INDIANA</b>	<b>ELKHART</b>	
Parts & Sales Inc. . . . .	2101 Industrial Pkwy. . . . .	46514
<b>IOWA</b>	<b>DUBUQUE</b>	
Power Lawn & Garden Equip. . . . .	2551 J.F. Kennedy . . . . .	52001
<b>LOUISIANA</b>	<b>MONROE</b>	
Mid-South Power . . . . .	700 Pine St. . . . .	71201
	<b>NEW ORLEANS</b>	
Suhren Engine Co. . . . .	8330 Earhart Blvd. . . . .	70118
<b>MARYLAND</b>	<b>TAKOMA PARK</b>	
Center Supply Co. . . . .	6867 New Hampshire Ave. . . . .	20912
<b>MASSACHUSETTS</b>	<b>SPRINGFIELD</b>	
Morton B. Collins Co. . . . .	300 Birnie Ave. . . . .	01107
<b>MICHIGAN</b>	<b>LANSING</b>	
Lorenz Service Co. . . . .	2500 S. Pennsylvania . . . . .	48910
	<b>MOUNT CLEMENS</b>	
Power Equipment Dist. . . . .	340 Hubbard . . . . .	48043
<b>MINNESOTA</b>	<b>HOPKINS</b>	
Hance Distributing Inc. . . . .	420 Excelsior Ave. W. . . . .	55343
<b>MISSISSIPPI</b>	<b>BILOXI</b>	
Biloxi Sales & Service, Inc. . . . .	506 Caillavet St. . . . .	39533
<b>MISSOURI</b>	<b>KANSAS CITY</b>	
Automotive Equip. Service . . . . .	3117 Holmes St. . . . .	64109
	<b>ST. JOSEPH</b>	
Ross-Frazier Supply Co. . . . .	8th and Monterey . . . . .	64503
	<b>ST. LOUIS</b>	
Henzler, Inc. . . . .	2015 Lemay Ferry Road . . . . .	63125
<b>NEW JERSEY</b>	<b>BELLMAWR</b>	
Lawnmower Parts Inc. . . . .	717 Creek Rd. . . . .	08030
<b>NEW MEXICO</b>	<b>ALBUQUERQUE</b>	
Spitzer Eng. & Parts . . . . .	1023 Third Ave. N.W. . . . .	87103
<b>NEW YORK</b>	<b>CARTHAGE</b>	
Gamble Dist., Inc. . . . .	West End Ave. . . . .	13619

<b>NORTH CAROLINA</b>	<b>GOLDSBORO</b>	
Smith Hardware Co. . . . .	515 N. George St. . . . .	27530
	<b>GREENSBORO</b>	
Dixie Sales Company . . . . .	335 N. Green . . . . .	27402
<b>OHIO</b>	<b>CARROLL</b>	
Stebe's Mid-State Mower Supply . . . . .	Box 366, 71 High St. . . . .	43112
	<b>CLEVELAND</b>	
Bleckrie, Inc. . . . .	7900 Lorain Ave. . . . .	44102
	<b>WADSWORTH</b>	
National Central . . . . .	687 Seville Rd. . . . .	44281
	<b>YOUNGSTOWN</b>	
Burton Supply Co. . . . .	1301 Logan Ave. Box 929 . . . . .	44501
<b>OKLAHOMA</b>	<b>MUSKOGEE</b>	
Victory Motors, Inc. . . . .	605 S. Cherokee . . . . .	74401
<b>OREGON</b>	<b>PORTLAND</b>	
Kenton Supply Co. . . . .	8216 N. Denver Ave. . . . .	97217
<b>PENNSYLVANIA</b>	<b>HARRISBURG</b>	
EECO Inc. . . . .	4021 N. 6th St. . . . .	17110
	<b>PHILADELPHIA</b>	
Thompson Rubber Co. . . . .	5222-24 N. Fifth St. . . . .	19120
	<b>PITTSBURGH</b>	
Bluemont Co. . . . .	11125 Frankstown Rd. . . . .	15235
	<b>PUNXSUTAWNEY</b>	
Frank Roberts & Sons . . . . .	R.D. 2 . . . . .	15767
<b>TENNESSEE</b>	<b>KNOXVILLE</b>	
Master Repair Service . . . . .	2000 Western Ave. . . . .	37921
	<b>MEMPHIS</b>	
American Sales & Service, Inc. . . . .	3035-43 Bellbrook . . . . .	38116
<b>TEXAS</b>	<b>DALLAS</b>	
Marr Brothers, Inc. . . . .	423 E. Jefferson . . . . .	75203
	<b>FORT WORTH</b>	
Woodson Sales Corp. . . . .	1702 N. Sylvania . . . . .	76111
	<b>HOUSTON</b>	
Bullard Supply Co. . . . .	2409 Commerce St. . . . .	77003
	<b>SAN ANTONIO</b>	
Engine House Inc. . . . .	8610 Botts Lane P.O. Box 17867 . . . . .	78217
<b>UTAH</b>	<b>SALT LAKE CITY</b>	
A-1 Engine & Mower Co. . . . .	439 E. 900 So. . . . .	84111
<b>VIRGINIA</b>	<b>ASHLAND</b>	
RBI Corp. . . . .	Lake Ridge Rd. 101 Cedar Run Dr. . . . .	23005
<b>WASHINGTON</b>	<b>SEATTLE</b>	
Bailey's Inc. . . . .	1414 14th Ave. . . . .	98122
<b>WISCONSIN</b>	<b>MARSHFIELD</b>	
Power Pac . . . . .	301 E. 29th St. . . . .	54449
	<b>APPLETON</b>	
Appleton Automotive Supply Co. . . . .	123 S. Linwood Ave. P.O. Box 798 . . . . .	54911
	<b>TWIN LAKES</b>	
E-Kon Small Engine Spec. . . . .	122 Lance Dr. . . . .	53181

### WARRANTY / PARTS AND SERVICE POLICY

(0782)

The purpose of warranty is to protect the customer from defects in workmanship and materials, defects which are NOT detected at the time of manufacture. It does not provide for the unlimited and unrestricted replacement of parts. Use and maintenance are the responsibility of the customer. The manufacturer cannot assume responsibility for conditions over which it has no control. Simply put, if it's the manufacturer's fault, it's the manufacturer's responsibility; if it's the customer's fault, it's the customer's responsibility.

#### CLAIMS AGAINST THE MANUFACTURER'S WARRANTY INCLUDES:

1. Replacement of Missing Parts on new equipment.
2. Replacement of Defective Parts within the warranty period.
3. Repair of Defects within the warranty period.

All claims MUST be substantiated with the following information:

1. Model Number of unit involved.
2. Date unit was purchased or first put into service.
3. Date of failure.
4. Nature of failure.