

Product Notice

Ariens Company
655 W. Ryan St.
Brillion, WI 54110
www.ariens.com

Product Family: Pro-Turn 200 & 400 Series Mowers

Subject: ZT-5400 Transaxle

Dealer Action: Inspect and Repair as Necessary

Ariens Company has received the attached information from Hydro-Gear. This is an instruction sheet for inspecting and, if necessary, correcting a hardware problem on the ZT-5400 transaxles used on PT-200 and PT-400 series commercial mowers.

Models and serial numbers affected:

| Model | Serial Number |
|--------------|--------------------------|
| 992200 | 22002 |
| 992201 | 22024 – 026, 22029 |
| 992203 | 22042 – 045, 22047 – 048 |
| 992204 | 22048 – 050, 052 – 053 |

The concern is that the flat washer behind the wave washer on the transmission bypass valve may have been incorrectly installed allowing the bypass to partially engage during operation. Before putting an affected machine into service, please inspect and repair if the problem is found. No parts are necessary for the repair.

Standard warranty applies. Dealer will be reimbursed .25 hours for each machine inspected and/or repaired.

For questions contact Ariens Technical Service at 920-756-4688.



Instruction Sheet

SUBJECT: Improperly Assembled ZT-5400 Bypass

It has come to Hydro-Gear's attention that the bypass on some ZT-5400s may be assembled incorrectly. This can cause the transaxle to malfunction. Inspect the order of the transaxles bypass components. A correctly assembled bypass will have the seal, bypass rod, flat washer, wave washer and retaining ring installed in that order (see Figure 1). For example there have been reports of the bypass assembled incorrectly with the flat washer between the seal and the bypass rod (see Figure 2).

To correct this the retaining ring and wave washer will need to be removed and set aside. In order to keep oil loss to a minimum the bypass rod only needs to be partially removed. This will allow the technician to work the flat washer off the bypass rod. Once the flat washer was been removed the bypass rod can then be installed back into the transaxle. The flat washer, wave washer and retaining ring can then be installed (see Figure 1). Only a small amount of oil should be lost during this procedure. If needed, top off the reservoir.

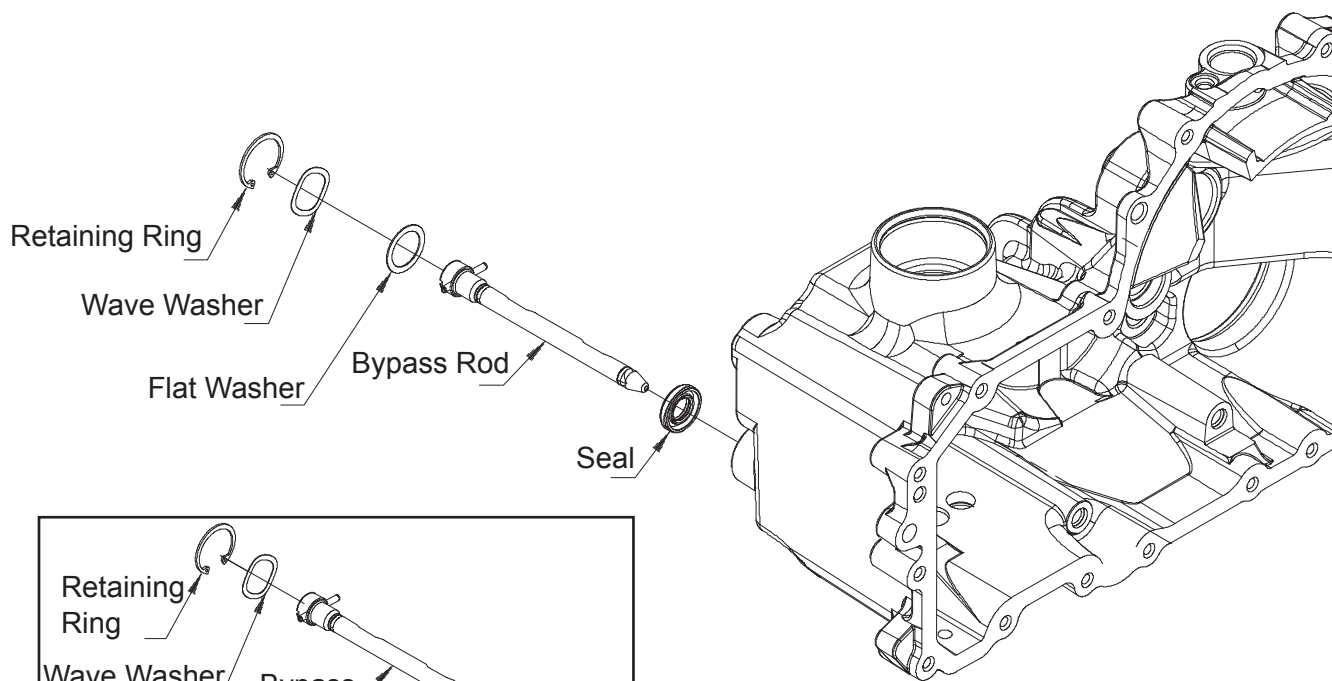


Figure 1

