

# Parrot 3400 LS-GPS with ETEN Glofish X800 and TomTom Navigator 6



Teste with ROM : 040 WWE



**ETEN Glofish X800  
with TomTom Navigator 6**



**Parrot 3400 LS-GPS**



# SETUP PROCEDURES

## Features

- I/ 3400 LS-GPS Pairing Procedure
- II/ GPS Connection
- III/ TomTom Navigator 6 Setup Procedure
- IV/ Plan a Route



# Features

- Two Bluetooth connections at the same time : GPS and Handsfree.
- Voice navigation instructions through PDA headspeakers ONLY
- Voice navigation instructions are NOT played DURING a call
- **Automatic** switch between GPS software and phone applications when using red and green carkits buttons (especially on “Incoming” and “Outgoing” Call)
- **Manual** return in navigation after: hanging up with the phone a call, picking up by the phone an “Incoming” call (then discrete mode)
- Automatic GPS connection (if option activated into Settings/GPS/Settings/“Connection on Start Up”)

Mandatory : **Valid GPS signal** is needed to establish stable “GPS connection” between **Parrot 3400 LS-GPS with ETEN Glofish X800** (otherwise there are GPS disconnections)



## Step I

-

# 3400 LS-GPS Pairing Procedure for Hansfree Connexion

## Step I – 3400 LS-GPS Pairing Procedure



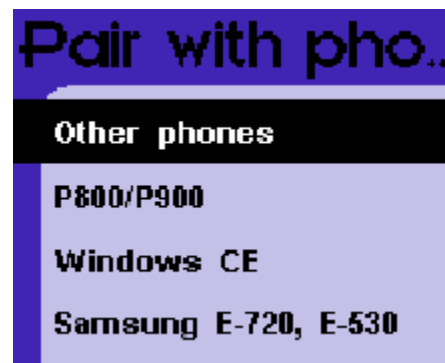
Parrot 3400 LS-GPS  
"Idle Mode" with Valid  
GPS signal



Please go into the menu  
"SETTINGS" of the carkit



## Step I – 3400 LS-GPS Pairing Procedure

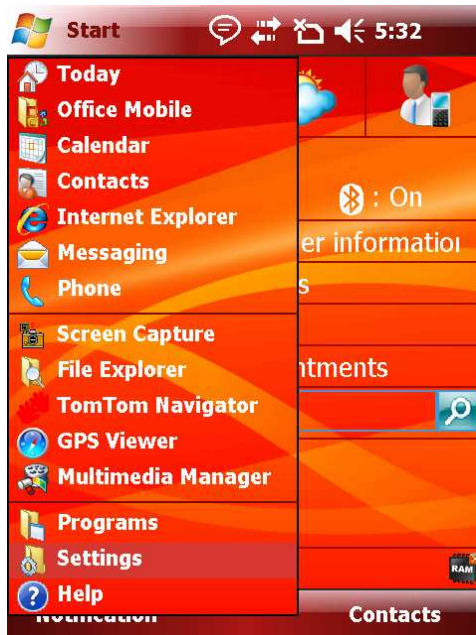


Then, go into the menu  
"PAIR WITH PHONE \ OTHERS PHONES". The  
carkit will display a random PIN code.

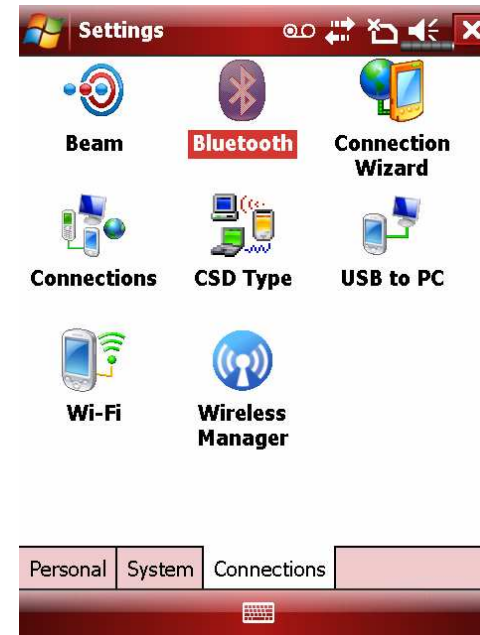
# Parrot 3400 LS-GPS with ETEN Glofish X800 and TomTom Navigator 6



## Step I – 3400 LS-GPS Pairing Procedure



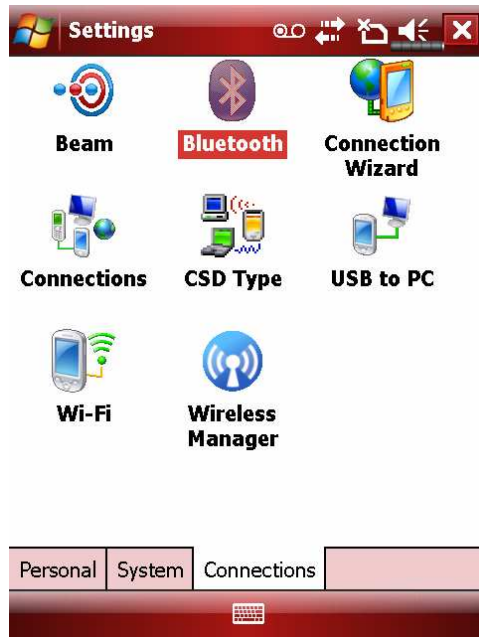
From the Smartphone Idle screen, please select the "START" menu. Select the "SETTINGS" command



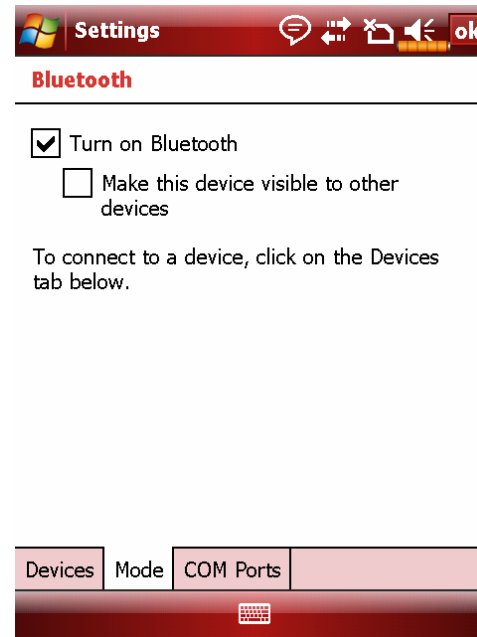
Select the "CONNECTIONS" tab



## Step I – 3400 LS-GPS Pairing Procedure



Select the "BLUETOOTH" icon



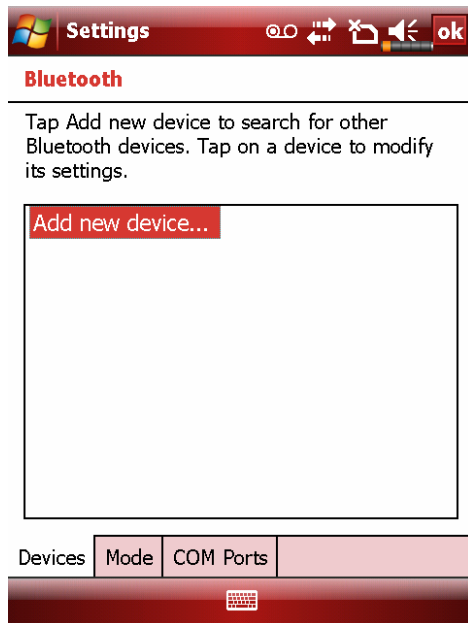
Please make sure that the Bluetooth is ON and then tap on the "DEVICES" tab



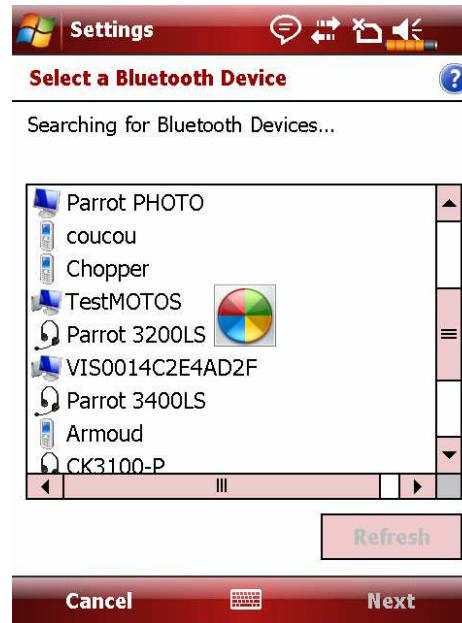
# Parrot 3400 LS-GPS with ETEN Glofish X800 and TomTom Navigator 6



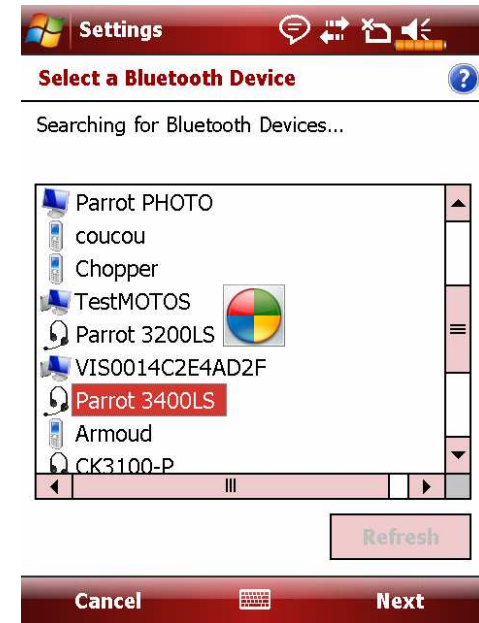
## Step I – 3400 LS-GPS Pairing Procedure



Select the "Add NEW DEVICE ..." command



ETEN Glofish X800 searches for Bluetooth devices



Select your Parrot 3400 LS-GPS

# Parrot 3400 LS-GPS with ETEN Glofish X800 and TomTom Navigator 6



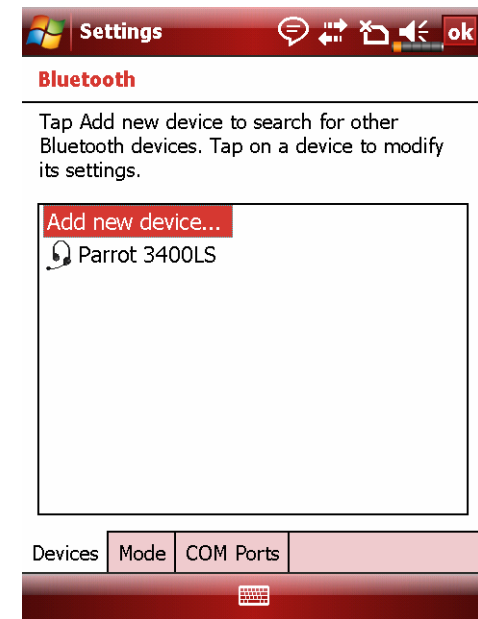
## Step I – 3400 LS-GPS Pairing Procedure



Position your Parrot into the mode "Settings / Pair a phone / Other phones"  
Enter the "PIN CODE"  
displayed by the car kit



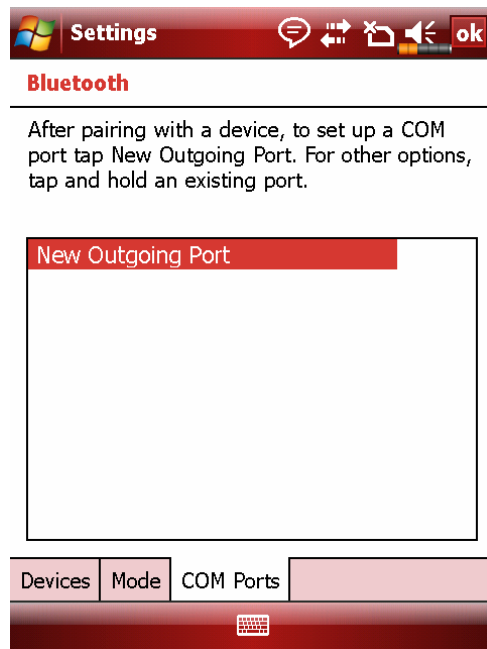
Activate the HandsFree and Serial Port services.



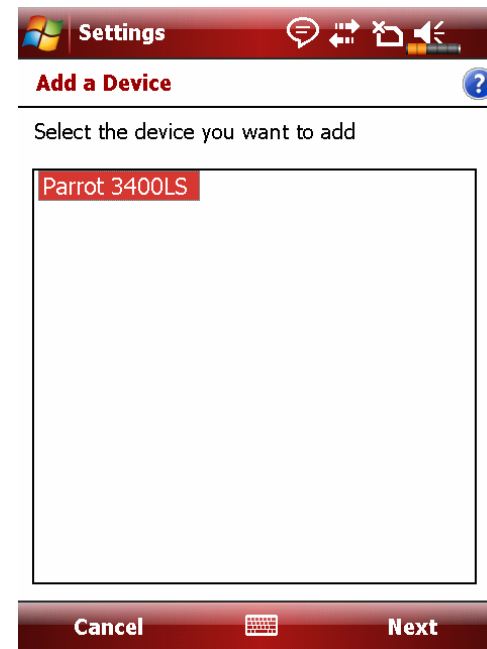
Handsfree Pairing is done,  
a connection will be done automatically



## Step I – 3400 LS-GPS Pairing Procedure



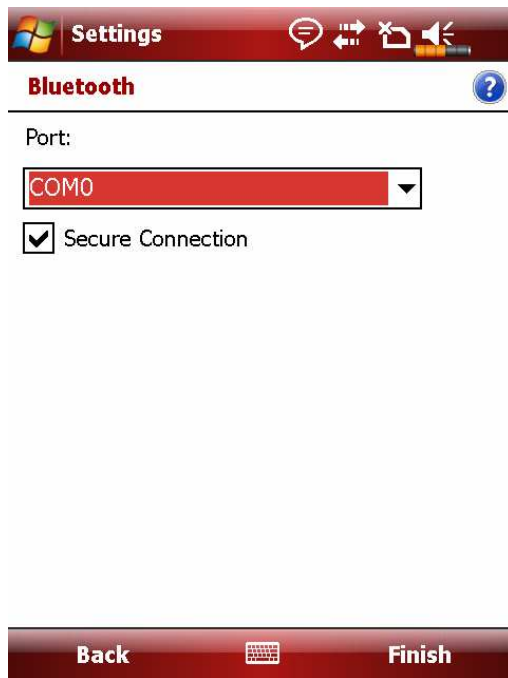
On the “COM PORTS” tab, please select the “NEW OUTGOING PORT” command



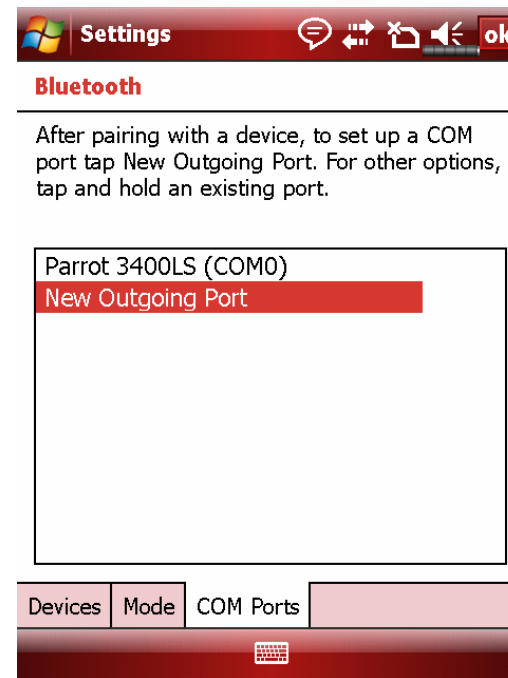
Select your Parrot 3400 LS-GPS among the diverse devices found.



## Step I – 3400 LS-GPS Pairing Procedure



Select the “COMx OUTGOING PORT” (preferentially COM6 or COM7 if possible)



An Outgoing COM port has been created



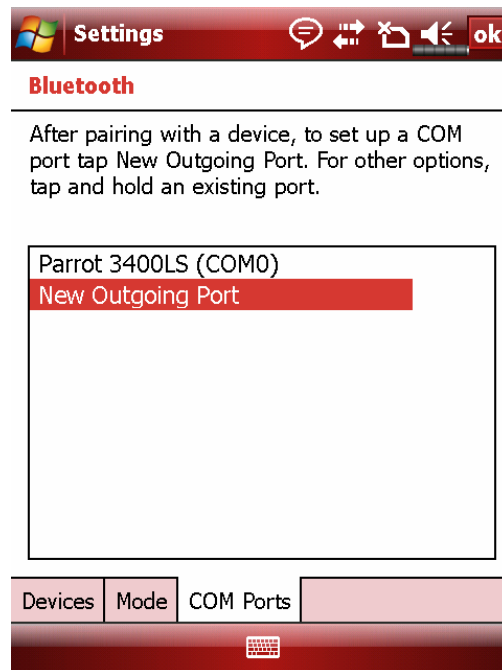
## Step II

-

**Pairing Procedure for GPS Connexion on the  
3400 LS-GPS side**



## Step II – GPS Connection



HandsFree connection is established. Now, let us operate the GPS connection.

## Step II – GPS Connection



Navigate to the Parrot 3400 LS-GPS menu (the fourth one from the idle mode)



Go into the "ACTIVATE / DEACTIVATE" menu of the Parrot 3400 LS-GPS



Make sure the GPS feature is "Activated"



## **Step II – GPS Connection**

Press the carkit's RED BUTTON for at least three seconds. Your carkit and your mobile phone will be disconnected and a pop-up "Please connect GPS" appears on the Parrot 3400 LS-GPS





## Step III

-

**Pairing Procedure for GPS  
Connexion on the phone side**

# Parrot 3400 LS-GPS with ETEN Glofish X800 and TomTom Navigator 6



## Step III – TomTom Navigator 6 Setup Procedure



Please start your “TomTom Navigator 6” software in the menu “Programs”

“TomTom Navigator 6” start screen without GPS signal: you need to configure GPS reception – please tap on the screen



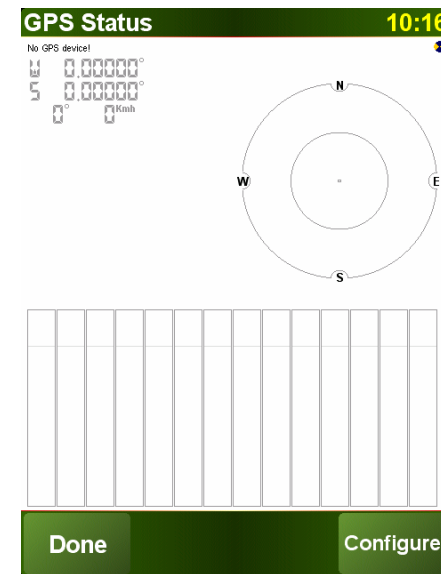
## Step III – TomTom Navigator 6 Setup Procedure



Tap on "Change Preference"



Select the "GPS Status" icon



Choose the "Configure" option and validate



## Step III – TomTom Navigator 6 Setup Procedure

**Select your GPS receiver** 10:28



Other Bluetooth GPS receiver

Select

Please establish a Bluetooth connection between your Bluetooth GPS receiver and your device. For details, see the documentation for your GPS receiver and your device.

Continue

**GPS is connected to:** 10:28

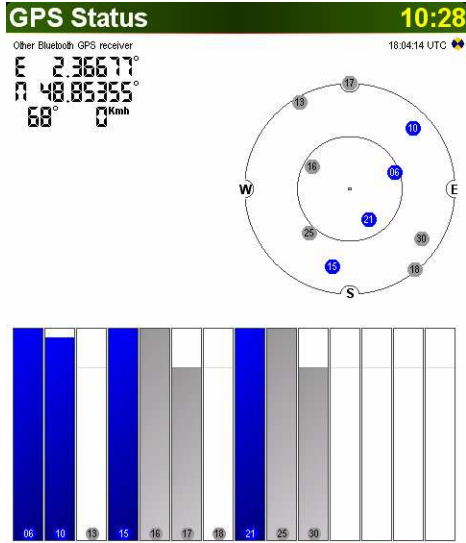
S2410 COM8  
S2410 COM5  
AGPS  
COM2:  
COM3:  
GPS Device  
S2442 UART0  
COM0:

Cancel

**GPS Status** 10:28

Other Bluetooth GPS receiver 18:04:14 UTC

E 2.36677°  
N 48.85355°  
68° 0 Km/h



Done Configure

Please select "Other Bluetooth receiver" – then press on "continue"

Select the port you have just defined as the GPS channel beforehand ("COM0" for our example)

Your Parrot 3400 LS-GPS is now defined as the source of GPS signal for TomTom



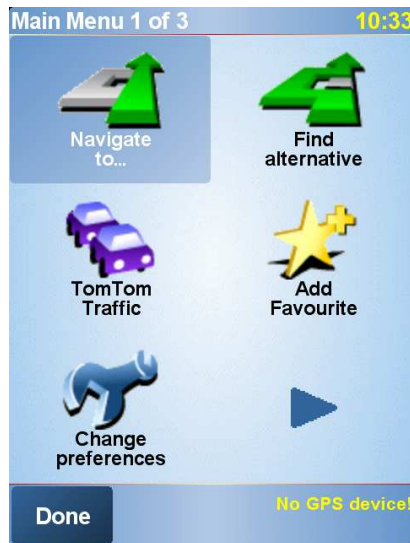
## Step IV

-

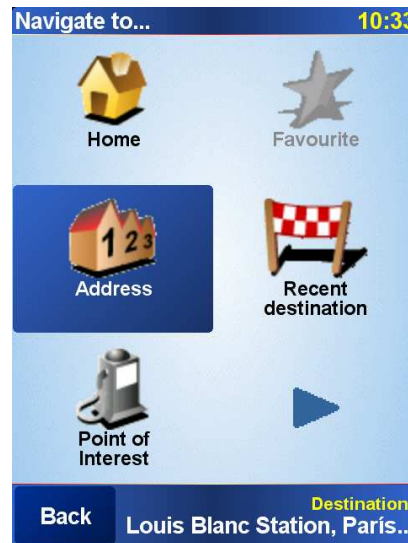
**Use the GPS Connexion to navigate**



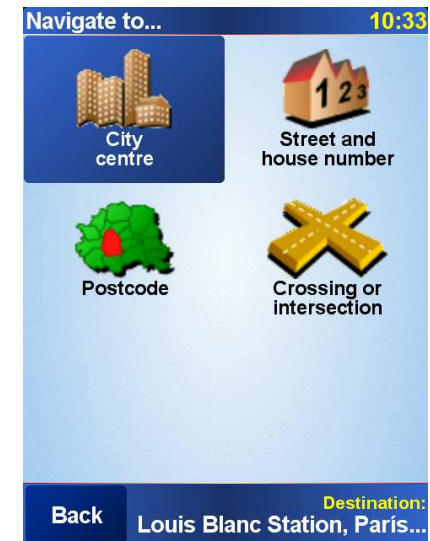
## Step IV – Plan a route



On the HOME screen, tap on the "Navigate to" icon



You have different options available to define your destination.



Option #1: Choose "Address" and select "City Center" to define your destination the most simple way.

# Parrot 3400 LS-GPS with ETEN Glofish X800 and TomTom Navigator 6



## Step IV – Plan a route

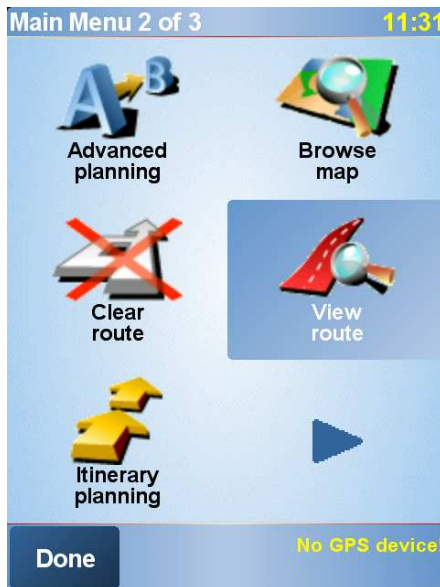
Option #2: Choose "Advanced Planning", meaning you need to define depart and destination points

Option #2: Choose "Street and house number" for each of these points

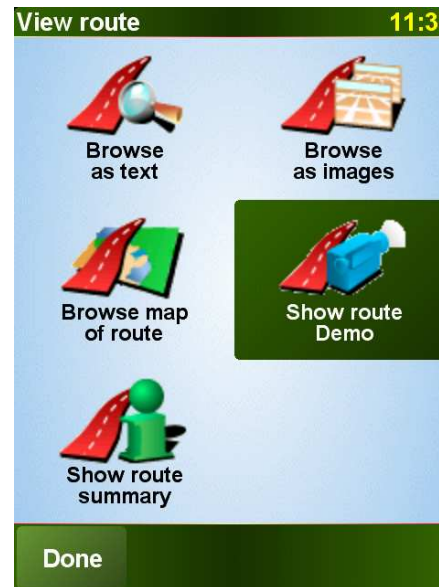
Option #2: enter the precise address. Define the City, then the Street, then the number of your destination



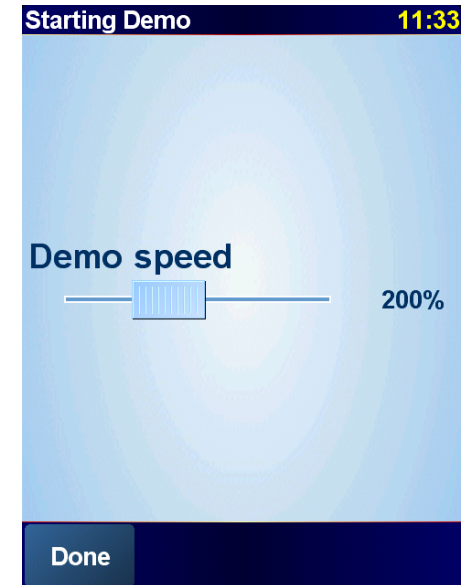
## Step IV – Plan a route



The TomTom software calculates the journey to the destination you entered



Tap on Details to simulate your itinerary, then "Display a demo of the itinerary", then select the speed of demo (200%)

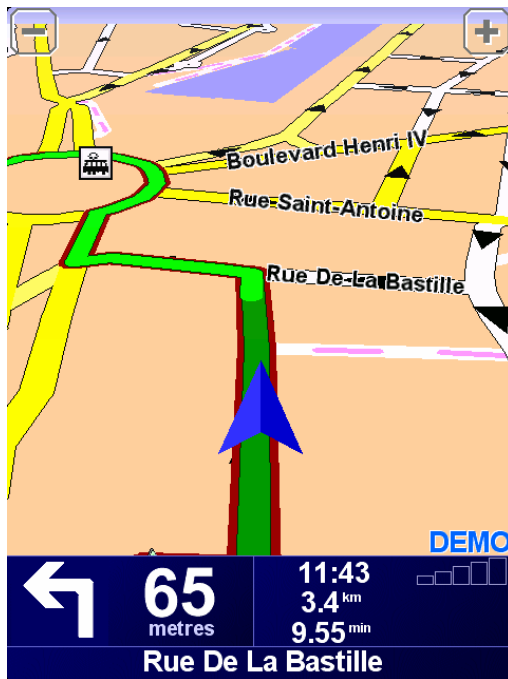


The simulation is launched





## Step IV – Plan a route



Navigation with "TomTom Navigator 6"