

SATDOCKU3S

Instruction Manual

USB 3.0 Hard Drive Docking Station

**SuperSpeed USB 3.0 to SATA
Hard Drive Docking Station for
2.5"/3.5" SATA Hard Drives**

StarTech.com 
Making hard-to-find easy![®]

FCC Compliance Statement

This equipment has been tested and found to comply with the limits for a Class B digital device, pursuant to part 15 of the FCC Rules. These limits are designed to provide reasonable protection against harmful interference in a residential installation. This equipment generates, uses and can radiate radio frequency energy and, if not installed and used in accordance with the instructions, may cause harmful interference to radio communications. However, there is no guarantee that interference will not occur in a particular installation. If this equipment does cause harmful interference to radio or television reception, which can be determined by turning the equipment off and on, the user is encouraged to try to correct the interference by one or more of the following measures:

- Reorient or relocate the receiving antenna.
- Increase the separation between the equipment and receiver.
- Connect the equipment into an outlet on a circuit different from that to which the receiver is connected.
- Consult the dealer or an experienced radio/TV technician for help.

Use of Trademarks, Registered Trademarks, and other Protected Names and Symbols

This manual may make reference to trademarks, registered trademarks, and other protected names and/or symbols of third-party companies not related in any way to StarTech.com. Where they occur these references are for illustrative purposes only and do not represent an endorsement of a product or service by StarTech.com, or an endorsement of the product(s) to which this manual applies by the third-party company in question. Regardless of any direct acknowledgement elsewhere in the body of this document, StarTech.com hereby acknowledges that all trademarks, registered trademarks, service marks, and other protected names and/or symbols contained in this manual and related documents are the property of their respective holders.

Table of Contents

Introduction	1
Packaging Contents.....	1
System Requirements	1
Front View.....	2
Rear View	2
Installation	3
Hardware Installation.....	3
Driver Installation.....	3
Using the Storage Device	4
Specifications	6
Technical Support	7
Warranty Information	7

Introduction

The StarTech.com SATDOCKU3S USB 3.0 Hard Drive Docking Station delivers full and instant access to any 2.5" or 3.5" SATA hard drive (SATA 1.5/3.0Gbps), without having to mount the drive inside a computer or install it into an external enclosure. Connected through a single USB 3.0 SuperSpeed or USB 2.0 HighSpeed connection, the hard drive docking station provides a convenient, plug-and-play storage solution.

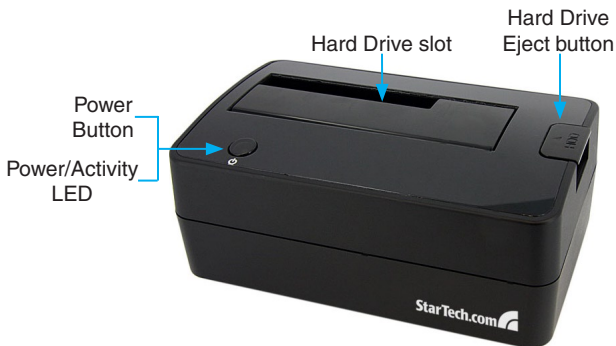
Packaging Contents

- 1 x SATDOCKU3S hard drive docking station
- 1 x USB 3.0 A-B cable
- 1 x Universal Power Adapter
- 3 x Power Adapter Cord (NA/UK/EU)
- 1 x Instruction Manual

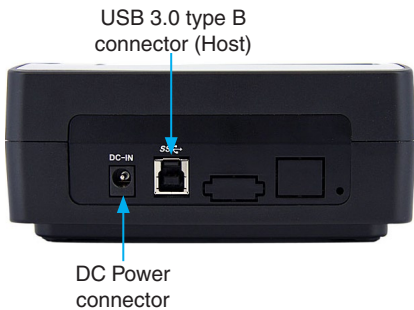
System Requirements

- USB enabled computer system with available port
- 2.5" or 3.5" SATA 1.5/3.0Gbps hard drive
- Microsoft Windows® 2000/XP/Vista/7 (32/64-bit), or Linux

Front View



Rear View



Installation

WARNING: Hard drives require careful handling, especially when being transported. If you are not careful with your hard disk, lost data may result. Always handle storage devices with caution.

Hardware Installation

1. Connect the external power adapter from the hard drive dock to a power outlet.
2. Insert a 2.5" or 3.5" hard drive into the top loading slot. Make sure that the connectors on the hard drive are facing the same corner of the slot that has a cutout in the door. The label on the hard drive should face the front of the hard drive dock.
3. Connect the included USB cable from the hard drive dock to an available USB port on the computer system. The computer can be on or off.

NOTE: A USB 2.0 A-B cable could also be used on the hard drive dock.

4. Press the power button on the top of the hard drive dock. The Power LED under the power button should light up.
5. To remove the hard drive, make sure it is currently not being accessed by the computer then unmount or uninstall the disk drive from the operating system (see documentation for your operating system). Press the power button to turn off the hard drive dock and wait for the drive to power down. Press the drive ejection button on the top of the hard drive dock to release the drive. Then pull the drive from the slot.

Driver Installation

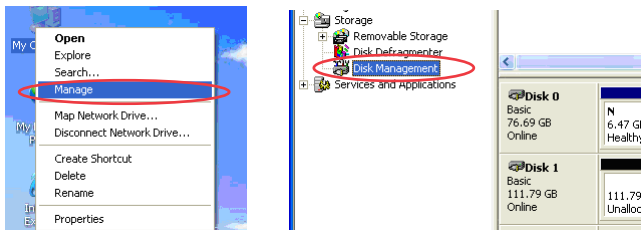
Windows 2000/XP/Vista/7 and Linux

No driver installation is required for these operating systems, as this hard drive dock is natively supported, so the drivers are already installed.

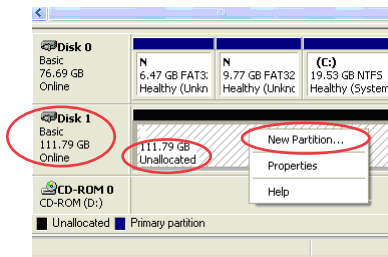
Using the Storage Device

Windows 2000/XP/Vista/7

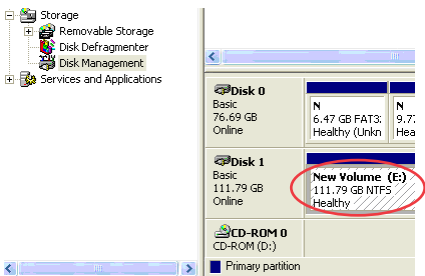
If you are using a brand new hard drive that does not contain any data, then you will first need to prepare the hard drive for use. From the main desktop, right-click on “My Computer” (“Computer” in Vista/7), then select Manage. In the new Computer Management window, select Disk Management from the left window panel.



Locate the Disk that says it is “Unallocated” (check hard drive capacity to confirm it’s the correct hard drive) and then right-click in the section that says “Unallocated” and select “New Partition”.



The New Partition Wizard will appear. Follow the instructions in the wizard to complete setting up the drive. Once complete, the Disk should show up as “Healthy” with a drive letter assigned (i.e. E:). This drive letter should now appear within My Computer.



If you are installing a hard drive that already has data on it, then after plugging it in, the drive should automatically show up with a drive letter assigned within My Computer.

Specifications

Bus Interface	USB 3.0
Connectors	1 x USB 3.0 type-B 1 x DC Power
LEDs	1 x Power/Activity
Chipset ID	LucidPort USB300
Maximum Data Transfer Rate	USB 3.0: 5Gbps
Compatible Hard Drives	2.5" or 3.5" SATA 1.5/3.0Gbps with capacity up to 2TB (500GB for 2.5")
Power Adapter	12VDC, 2.5A, center positive
Dimensions	145.0mm x 93.0mm x 65.0mm
Weight	410g
Compatible Operating Systems	Windows 2000/XP/Vista/7 (32/64-bit), Linux

Technical Support

StarTech.com's lifetime technical support is an integral part of our commitment to provide industry-leading solutions. If you ever need help with your product, visit www.startech.com/support and access our comprehensive selection of online tools, documentation, and downloads.

Warranty Information

This product is backed by a one year warranty.

In addition, StarTech.com warrants its products against defects in materials and workmanship for the periods noted, following the initial date of purchase. During this period, the products may be returned for repair, or replacement with equivalent products at our discretion. The warranty covers parts and labor costs only. StarTech.com does not warrant its products from defects or damages arising from misuse, abuse, alteration, or normal wear and tear.

Limitation of Liability

In no event shall the liability of StarTech.com Ltd. and StarTech.com USA LLP (or their officers, directors, employees or agents) for any damages (whether direct or indirect, special, punitive, incidental, consequential, or otherwise), loss of profits, loss of business, or any pecuniary loss, arising out of or related to the use of the product exceed the actual price paid for the product. Some states do not allow the exclusion or limitation of incidental or consequential damages. If such laws apply, the limitations or exclusions contained in this statement may not apply to you.



StarTech.com has been making “hard-to-find easy” since 1985, providing high quality solutions to a diverse IT and A/V customer base that spans many channels, including government, education and industrial facilities to name just a few. We offer an unmatched selection of computer parts, cables, A/V products, KVM and Server Management solutions, serving a worldwide market through our locations in the United States, Canada, the United Kingdom and Taiwan.

Visit **www.startech.com** today for complete information about all our products and to access exclusive interactive tools such as the Cable Finder, Parts Finder and the KVM Reference Guide.