

# TT134 | Freedom Mount™ Windshield / Dash / Console Mount for Tomtom GPS

## Compatible with:

- Tomtom One - 1<sup>st</sup>, 2<sup>nd</sup>, & 3<sup>rd</sup> Editions
- Tomtom One (UK version)
- Tomtom One XL - 1<sup>st</sup>, 2<sup>nd</sup>, & 3<sup>rd</sup> Editions
- Tomtom One XL-S - 1<sup>st</sup>, 2<sup>nd</sup>, & 3<sup>rd</sup> Editions
- Tomtom GO 520 / 720 / 920 / 920T
- Tomtom GO 300 / 500 / 700



CM026-2  
for GO 300, 500, & 700  
without dual-T plate



APPTO  
for Tomtom One



APPTOXL  
for Tomtom One XL  
and Tomtom One XL-S



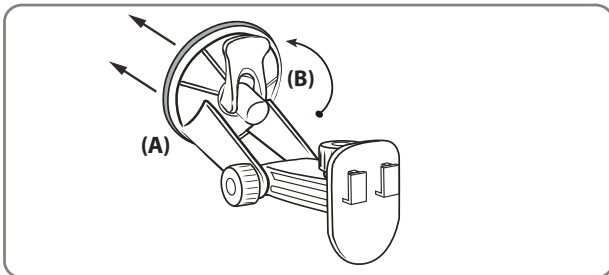
APPTGO520  
for Tomtom GO 520,  
720, 920, and 920T



AP036

## Windshield Installation

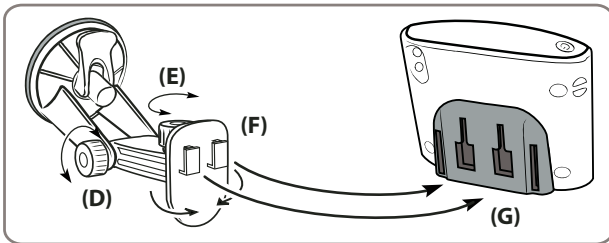
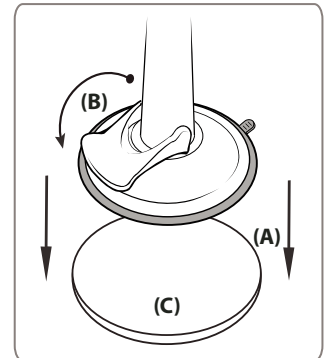
Step 1. Push the pedestal suction cup (A) firmly to the windshield. Flip the lever (B) down to secure the suction cup.



## Dash Installation

Step 1. Locate a safe flat surface on the dash or console to mount the pedestal. Clean the dash with the alcohol pad provided. Let the dash surface dry before applying the adhesive disc (C).

Step 2. Push the pedestal suction cup (A) firmly to the disc (C). Flip the lever (B) down to secure the suction cup.

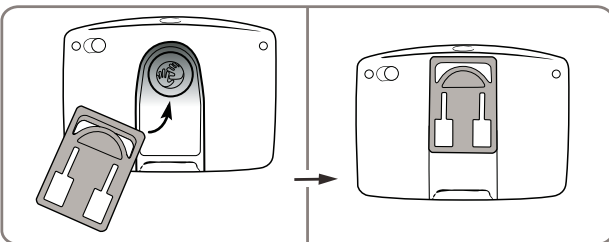


## Pedestal Adjustment and Cradle Attachment

Step 1. Adjust the angle of the pedestal arm by loosening the adjustment knob (D).

Step 2. Adjust the angle and rotation of the pedestal head by loosening the adjustment knob (E).

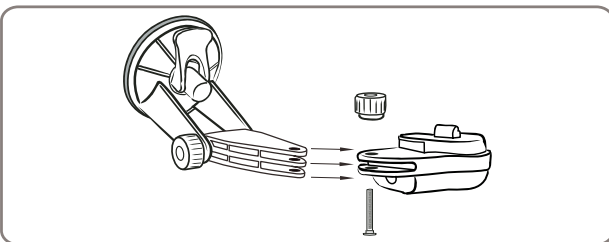
Step 3. Attach the adapter plate to the back of the device. Attach the device and plate to the pedestal by inserting the dual T-Tabs of the pedestal (F) into the dual T-slots of the adapter plate. (G)



## Instructions for APPTGO520 Adapter Plate

Step 1. Attach the adapter plate by sliding it up into the slot on the back of the Tomtom GO 520, 720, 920, or 920T device as shown above.

Step 2. Follow step 3 from *Pedestal Adjustment & Device Cradle Installation* above.



## Instructions for GO 300, 500, and 700 adapter plate

Step 1. Remove the tightening nut and screw to remove the dual-T plate head. Insert the mounting arm into the Tomtom GO 300, 500, or 700 adapter (not included). Attach the device to the adapter plate.



## Safety Precautions

Do not install Arkon products over an air bag cover or within the air bag deployment zone. Arkon Resources, Inc. assumes no responsibility of liability for injury or death as a result of car crashes and/or air bag deployment.

Arkon Resources, Inc. is not responsible for any damages caused to your car, your device, or yourself due to the installation or use of the pedestal mount.

**ARKON**  
RESOURCES INC.

The Mobile Mounting Specialists™

Consumer Hotline:  
(USA) (800) 841-0884  
(INT'L) (626) 254-9005  
Mon-Fri. 9am-5pm, PST

[www.arkon.com](http://www.arkon.com)  
Arcadia, CA 91006 USA  
Made in Taiwan

© Copyright 2007 Arkon Resources, Inc.