



Product End-of-Life Disassembly Instructions

Product Category: Notebooks and Tablet PCs

Marketing Name / Model
 [List multiple models if applicable.]

Name / Model #1 Compaq 510 Notebook

Name / Model #2 Compaq 511 Notebook

Name / Model #3 Compaq 610 Notebook

Name / Model #4

Name / Model #5

Purpose: The document is intended for use by end-of-life recyclers or treatment facilities. It provides the basic instructions for the disassembly of HP products to remove components and materials requiring selective treatment, as defined by EU directive 2002/96/EC, Waste Electrical and Electronic Equipment (WEEE).

1.0 Items Requiring Selective Treatment

1.1 Items listed below are classified as requiring selective treatment.

1.2 Enter the quantity of items contained within the product which require selective treatment in the right column, as applicable.

Item Description	Notes	Quantity of items included in product
Printed Circuit Boards (PCB) or Printed Circuit Assemblies (PCA)	With a surface greater than 10 sq cm	3
Batteries	All types including standard alkaline and lithium coin or button style batteries	2
Mercury-containing components	For example, mercury in lamps, display backlights, scanner lamps, switches, batteries	0
Liquid Crystal Displays (LCD) with a surface greater than 100 sq cm	Includes background illuminated displays with gas discharge lamps	0
Cathode Ray Tubes (CRT)		0
Capacitors / condensers (Containing PCB/PCT)		0
Electrolytic Capacitors / Condensers measuring greater than 2.5 cm in diameter or height		0
External electrical cables and cords		0
Gas Discharge Lamps		0
Plastics containing Brominated Flame Retardants		0
Components and parts containing toner and ink, including liquids, semi-liquids (gel/paste) and toner	Include the cartridges, print heads, tubes, vent chambers, and service stations.	0
Components and waste containing asbestos		0
Components, parts and materials containing refractory ceramic fibers		0
Components, parts and materials containing radioactive substances		0

2.0 Tools Required

List the type and size of the tools that would typically be used to disassemble the product to a point where components and materials requiring selective treatment can be removed.

Tool Description	Tool Size (if applicable)
Description #1 Motor-screw-driver "+"	Cross head of screwdriver
Description #2 Motor-screw-driver "*"	TORX T8 (2.31mm)
Description #3 Motor-screw-driver "-"	

3.0 Product Disassembly Process

3.1 List the basic steps that should typically be followed to remove components and materials requiring selective treatment:

1. Follow steps described in Disassembly instruction (file attached).
2. If parts can be removed without using a tool, remove it first.
3. Use correct screwdriver and torque value before unlock the screw.
- 4.
5. .
- 6.
- 7.
- 8.

3.2 Optional Graphic. If the disassembly process is complex, insert a graphic illustration below to identify the items contained in the product that require selective treatment (with descriptions and arrows identifying locations).

MANUFACTURING PROCESS INSTRUCTIONS MECHANICAL ASSEMBLY

MODEL : VV09

Sub-assembly name:	VV09 FA DIS-ASS' Y		
Document No.:	SOP VV09 FA DIS-ASS' Y		
Written by:	Zhang, Ying	Revision:	1.00
Date:	2009/5/18	Page:	1 of 29

A.Current station version list:

Station	Version	Station	Version	Station	Version	Station	Version	Station	Version	Station	Version
1	1.00	9	1.00	17	1.00	25	1.00				
2	1.00	10	1.00	18	1.00						
3	1.00	11	1.00	19	1.00						
4	1.00	12	1.00	20	1.00						
5	1.00	13	1.00	21	1.00						
6	1.00	14	1.00	22	1.00						
7	1.00	15	1.00	23	1.00						
8	1.00	16	1.00	24	1.00						

B.Version Modify list:

Date	Station	Content	Ver.	Design
2009/5/18	ALL	First SOP for mass production	1.**	Sun,Amos

Auditor : _____ Tabulator : Zhang, Ying



Working Instruction

Document No. : SOP VV09 FA DIS-ASS'Y

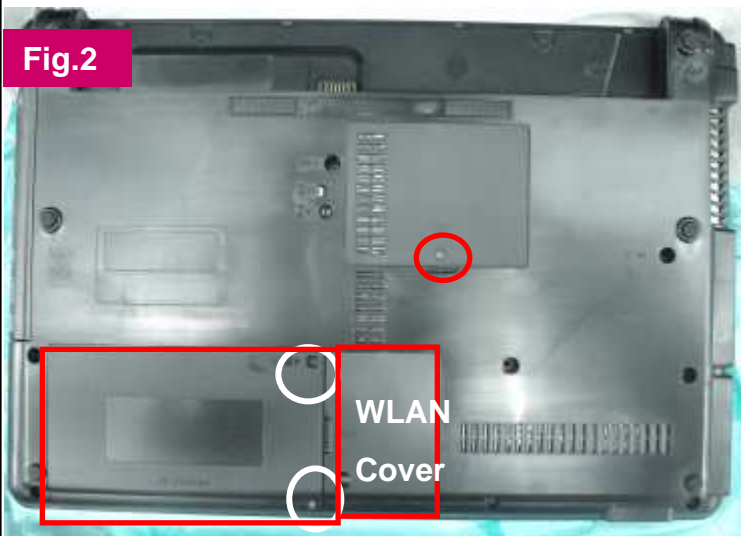
Station : 1(1/1)

Name : Disassemble Battery & COVER

Ver. : 1.00 Date : 2009/05/18



1. Pull latch, slip battery, and take it out.
❖ Battery must be paralleled with machine when pushing out. (Fig.1)
2. Loosen screws of HDD Cover * 2 and DDR Cover * 1. (Fig.2)
❖ Torsion : $2.0 \pm 0.2 \text{ kgf} \cdot \text{cm}$.
❖ Screws can't be stripped.
3. Disassemble DDR Cover ,HDD Cover and WLAN Cover.



Point for attention : If finding some defects, notice the gaffer and assistant

Fixture list (Fixture standard)	Qty	Fixture list (Fixture standard)	Qty
Automatic crossing screw driver	1		

Tabulator : Zhang Ying Issuing department : IE



Working Instruction

Document No. : SOP VV09 FA DIS-ASS'Y

Station : 2(1/1)

Name : Disassemble HDD& Loosen screws

Ver. : 1.00

Date : 2009/05/18

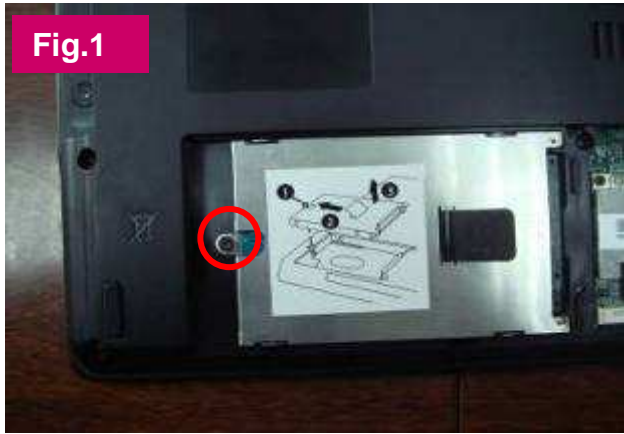


Fig.1

1. Loosen screws of HDD * 1. (Fig.1)
 - ❖ Torsion : $2.0 \pm 0.2 \text{ kgf} \cdot \text{cm}$;
 - ❖ Screws can't be stripped.
2. Loosen screws of ODD & K/B * 3 (Fig.2)
 - ❖ Torsion : $2.0 \pm 0.2 \text{ kgf} \cdot \text{cm}$;
 - ❖ Screws can't be stripped.
3. Pull the puller and to Disassemble HDD. (Fig.1)

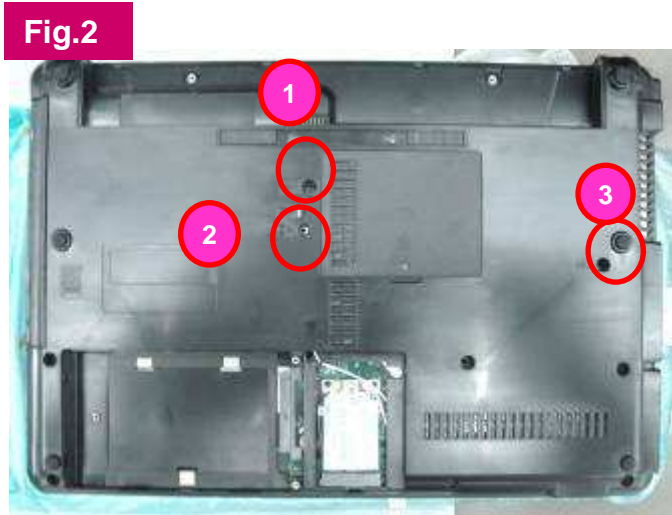


Fig.2

Point for attention : If finding some defects, notice the gaffer and assistant

Fixture list (Fixture standard)	Qty	Fixture list (Fixture standard)	Qty
Automatic crossing screw driver	1		

Tabulator : Zhang Ying Issuing department : IE



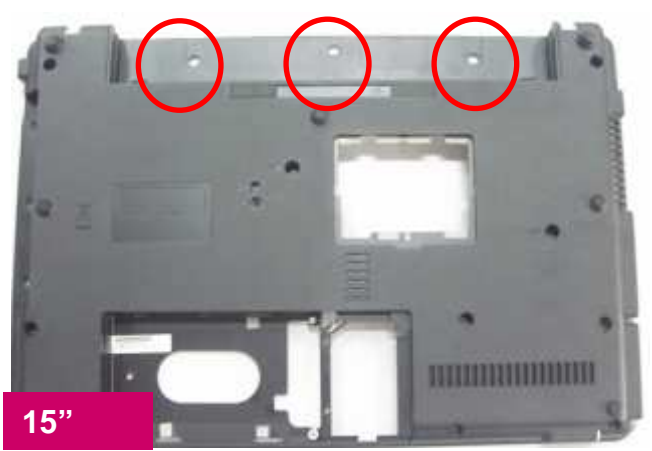
Working Instruction

Document No. : SOP VV09 FA DIS-ASS'Y

Station : 3(1/2)

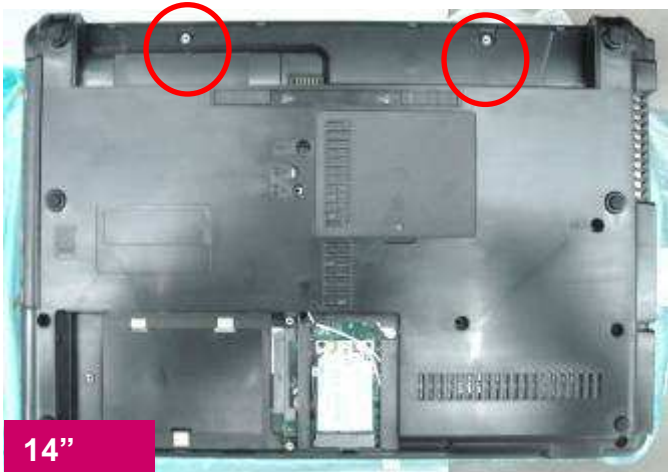
Name : Loosen screws

Ver. : 1.00 Date : 2009/05/18



1. Loosen screws (6052B0096201) of SW cover .

- ❖ 14" Loosen screws *2,
- ❖ 15" Loosen screws *3
- ❖ Torsion : $2.0 \pm 0.2 \text{ kgf} \cdot \text{cm}$;
- ❖ Screws can't be stripped.



Point for attention : If finding some defects, notice the gaffer and assistant

Fixture list (Fixture standard)	Qty	Fixture list (Fixture standard)	Qty
Automatic crossing screw driver	1		

Tabulator : Zhang Ying Issuing department : IE



Working Instruction

Document No. : SOP VV09 FA DIS-ASS'Y

Station : 3 (2/2)

Name : Loosen screws

Ver. : 1.00 Date : 2009/05/18

1. Loosen screws (6052B0111701) *2
 - ❖ Torsion : 2.0 ± 0.2 Kgf · cm
 - ❖ Screws can't be stripped or dropped into machine.



Point for attention : If finding some defects, notice the gaffer and assistant

Fixture list (Fixture standard)	Qty	Fixture list (Fixture standard)	Qty
Automatic crossing screw driver	1		

Tabulator : Zhang Ying Issuing department : IE



Working Instruction

Document No. : SOP VV09 FA DIS-ASS'Y

Station : 4(1/1)

Name : Disassemble Antenna cable & ODD

Ver. : 1.00

Date : 2009/05/18

1. Disassemble Antenna cable from WLAN CARD.
2. Take out ODD. (Fig.1)

Half Card



Long card



Without WLAN CARD



Fig.1



Point for attention : If finding some defects, notice the gaffer and assistant

Fixture list (Fixture standard)	Qty	Fixture list (Fixture standard)	Qty

Tabulator : Zhang Ying

Issuing department : IE



Working Instruction

Document No. : SOP VV09 FA DIS-ASS'Y

Station : 5(1/1)

Name : Loosen screws of ODD

Ver. : 1.00 Date : 2009/05/18

14 "



Fig.1

1. Loosen screws (6052B0097001) of ODD.
14" Loosen screws *2,
15" Loosen screws *3,

- ❖ Loosen screws with the sequence as figures showing
- ❖ Torsion : 2.0 ± 0.2 Kgf · cm
- ❖ Screws can't be stripped or dropped into machine.

15 "



Fig.2

Point for attention : If finding some defects, notice the gaffer and assistant

Fixture list (Fixture standard)	Qty	Fixture list (Fixture standard)	Qty
Automatic crossing screw driver	1		

Tabulator : Zhang Ying Issuing department : IE



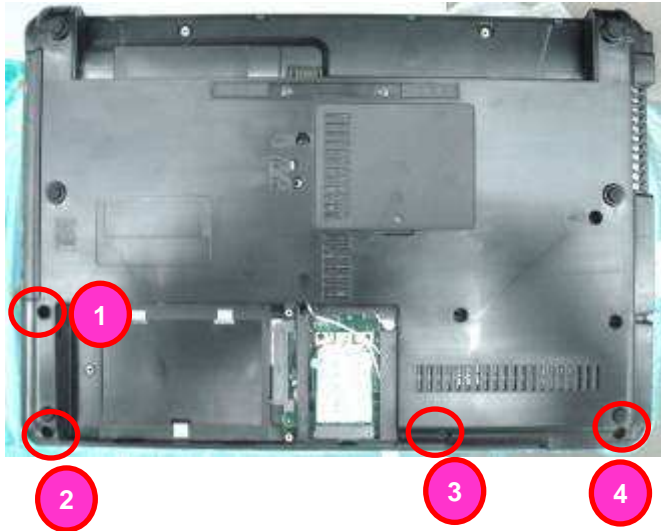
Working Instruction

Document No. : SOP VV09 FA DIS-ASS'Y

Station : 6(1/1)

Name : Loosen screws of BTCB

Ver. : 1.00 Date : 2009/05/18



1. Loosen screws of BTCB
(6052A0021901) * 4

❖ Torsion : 2.0 ± 0.2 Kgf · cm

❖ Screws can't be stripped or dropped into machine.

2. Turn over the machine in the surface .

Point for attention : If finding some defects, notice the gaffer and assistant

Fixture list (Fixture standard)	Qty	Fixture list (Fixture standard)	Qty
Automatic hexagonal screw driver	1		

Tabulator : Zhang Ying Issuing department : IE



Working Instruction

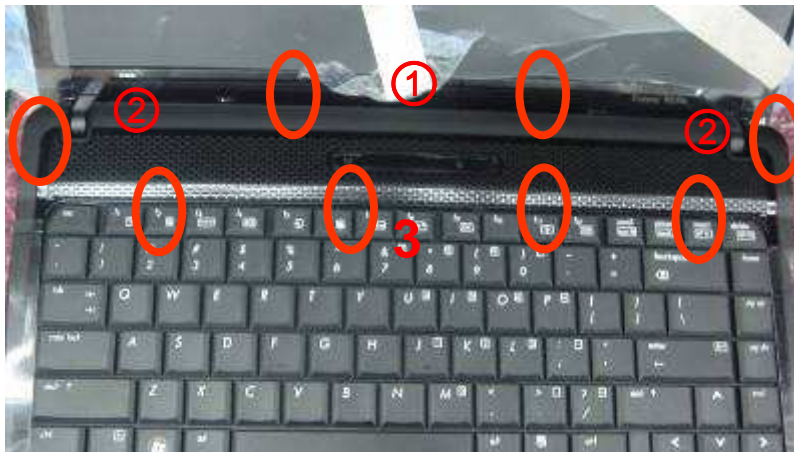
Document No. : SOP VV09 FA DIS-ASS'Y

Station : 7(1/1)

Name : Disassemble SW/C

Ver. : 1.00 Date : 2009/05/18

Fig.1



1. Disassemble SW/C , Fig.1

14" : 6070B0350501

15" : 6070B0351101

❖ Sequence:1→2→3

2. Turn over the K/B , Fig.2

Fig.2



Point for attention : If finding some defects, notice the gaffer and assistant

Fixture list (Fixture standard)	Qty	Fixture list (Fixture standard)	Qty

Tabulator : Zhang Ying Issuing department : IE



Working Instruction

Document No. : SOP VV09 FA DIS-ASS'Y

Station : 8(1/1)

Name : Disassemble SW/C&K/B FFC

Ver. : 1.00 Date : 2009/05/18



Fig.1

1. Loosen Lock piece, take out K/B FFC from MB CNTR. Fig.1
2. Disassemble SW/C&K/B .

Point for attention : If finding some defects, notice the gaffer and assistant

Fixture list (Fixture standard)	Qty	Fixture list (Fixture standard)	Qty

Tabulator : Zhang Ying Issuing department : IE



Working Instruction

Document No. : SOP VV09 FA DIS-ASS'Y

Station : 9(1/1)

Name : Loosen screws , Disassemble Speaker Ver. : 1.00 Date : 2009/05/18

1. Disassemble Speaker CNTR.(Fig.4)
2. Loosen screws of Speaker (6039B0031401)。

14'' : 6052A0004501 * 3, Fig.1

15'' : 6052A0004501 * 2, Fig.2

15'' : 6052A0003501 * 1, Fig.3

❖ Torsion : 2.0 ± 0.2 Kgf · cm

❖ Screws can't be stripped or dropped into machine.

14''



Fig.1



Fig.4

15''



Fig.2

Fig.3



Point for attention : If finding some defects, notice the gaffer and assistant

Fixture list (Fixture standard)	Qty	Fixture list (Fixture standard)	Qty
Automatic crossing screw driver	1		

Tabulator : Zhang Ying Issuing department : IE



Working Instruction

Document No. : SOP VV09 FA DIS-ASS'Y

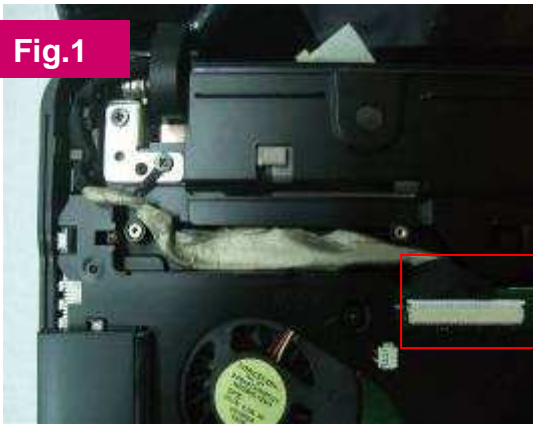
Station : 10(1/1)

Name : Disassemble LCM Cable

Ver. : 1.00 Date : 2009/05/18

1. Disassemble LCM Cable CNTR ◦
2. Disassemble Camera CNTR.

15'



14'

Point for attention : If finding some defects, notice the gaffer and assistant

Fixture list (Fixture standard)	Qty	Fixture list (Fixture standard)	Qty

Tabulator : Zhang Ying Issuing department : IE



Working Instruction

Document No. : SOP VV09 FA DIS-ASS'Y

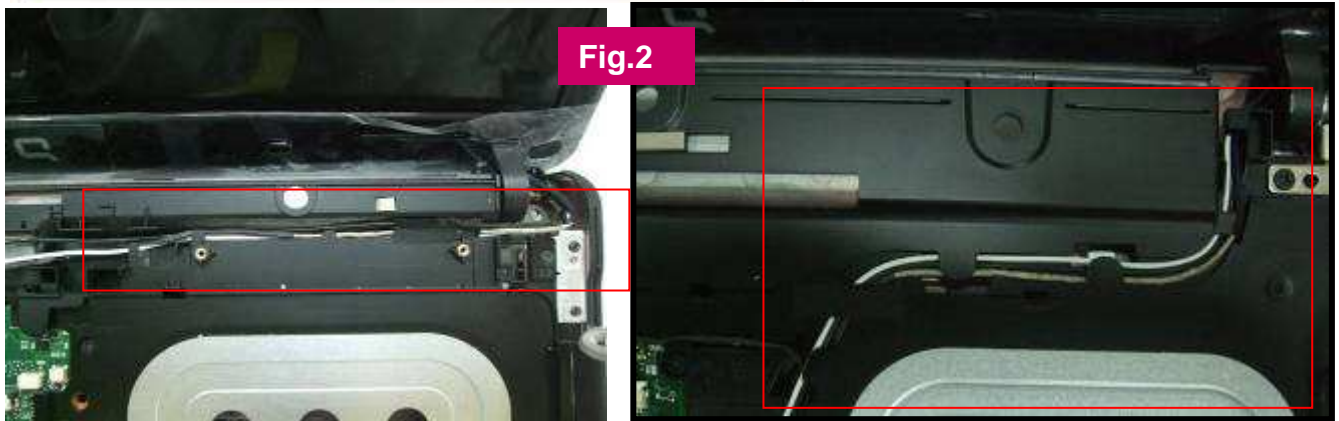
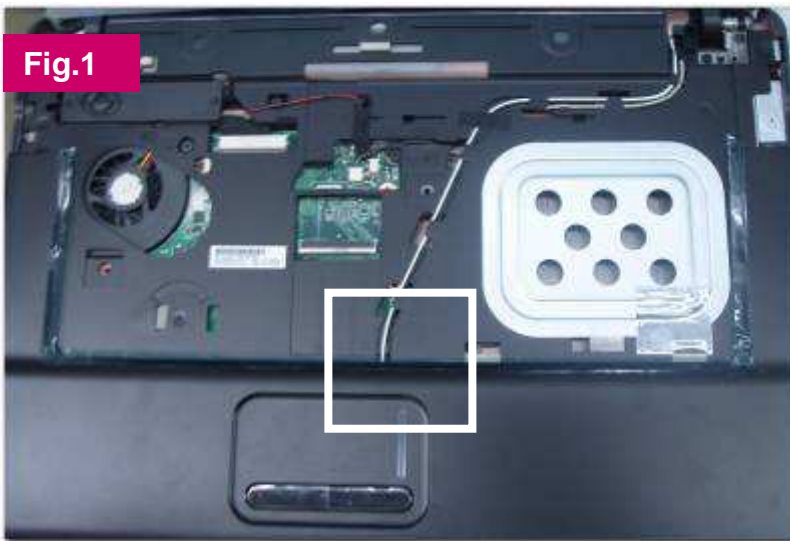
Station : 11(1/1)

Name : Disassemble Antenna Cable, Camera Cable Ver. : 1.00

Date : 2009/05/18

1.Pull out Antenna cable along the slot of BTCB. (Fig.1).

2.Disassemble Antenna Cable ,Camera Cable.(Fig.2)



Point for attention : If finding some defects, notice the gaffer and assistant

Fixture list (Fixture standard)	Qty	Fixture list (Fixture standard)	Qty

Tabulator : Zhang Ying Issuing department : IE



Working Instruction

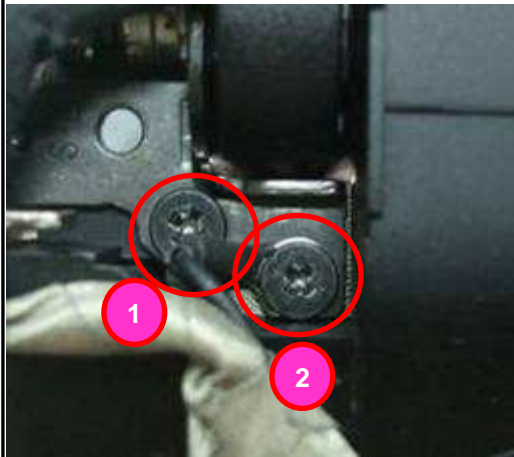
Document No. : SOP VV09 FA DIS-ASS'Y

Station : 12(1/2)

Name : Loosen screws of LCM (For 14")

Ver. : 1.00

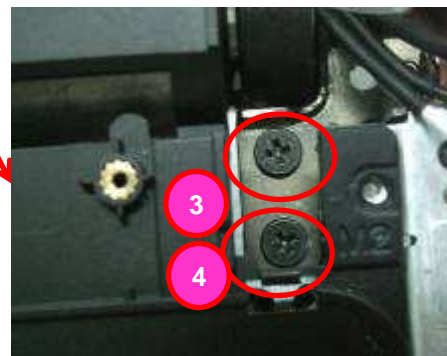
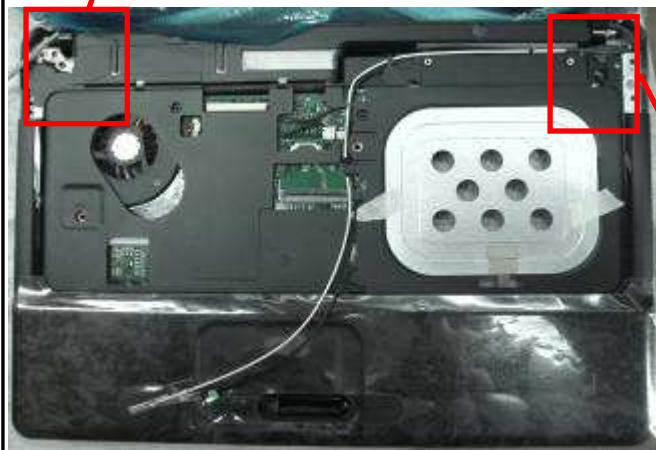
Date : 2009/05/18



1. Loosen screws of LCM
(6052B0098201) * 4.

❖ Torsion : 3.5 ± 0.2 Kg \cdot cm

❖ Screws can't be stripped or dropped into machine.



14'

Point for attention : If finding some defects, notice the gaffer and assistant

Fixture list (Fixture standard)	Qty	Fixture list (Fixture standard)	Qty
Automatic hexagonal screw driver	1		

Tabulator : Zhang Ying

Issuing department : IE



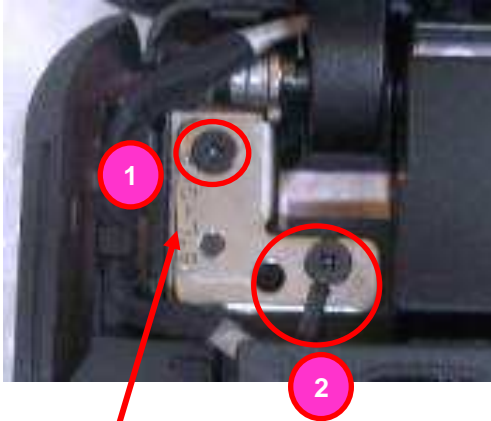
Working Instruction

Document No. : SOP VV09 FA DIS-ASS'Y

Station : 12(2/2)

Name : Loosen screws of LCM(For 15")

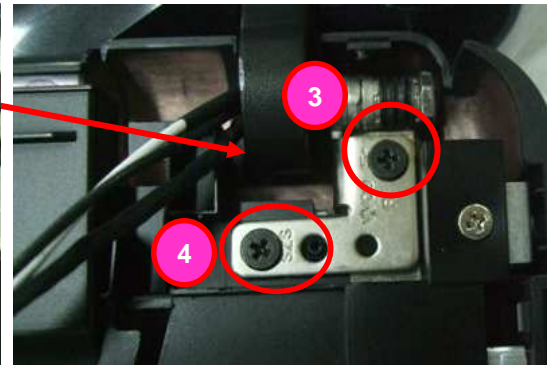
Ver. : 1.00 Date : 2009/05/18



1. Loosen screws of LCM
(6052B0098201) * 4 ◦

❖ Torsion : 3.5 ± 0.2 Kgf · cm

❖ Screws can't be stripped or dropped into machine.



15'

Point for attention : If finding some defects, notice the gaffer and assistant

Fixture list (Fixture standard)	Qty	Fixture list (Fixture standard)	Qty
Automatic hexagonal screw driver	1		

Tabulator : Zhang Ying Issuing department : IE



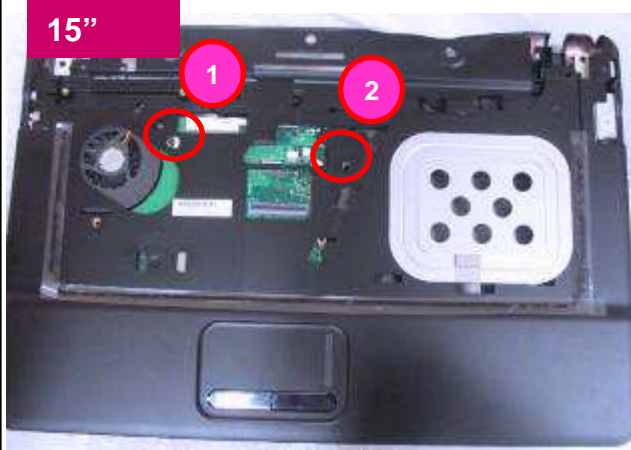
Working Instruction

Document No. : SOP VV09 FA DIS-ASS'Y

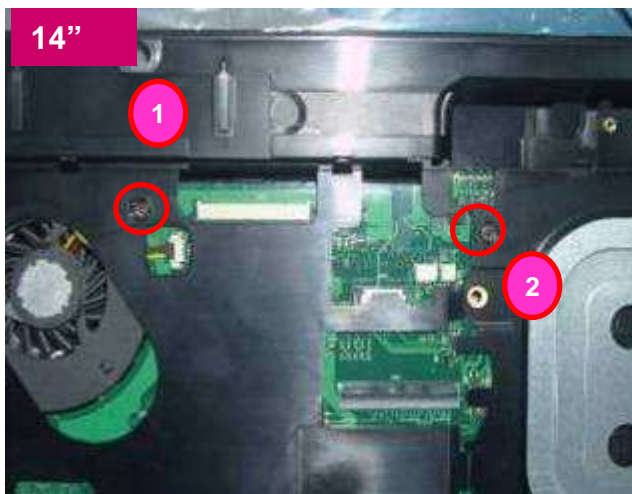
Station : 13(1/1)

Name : Loosen screws

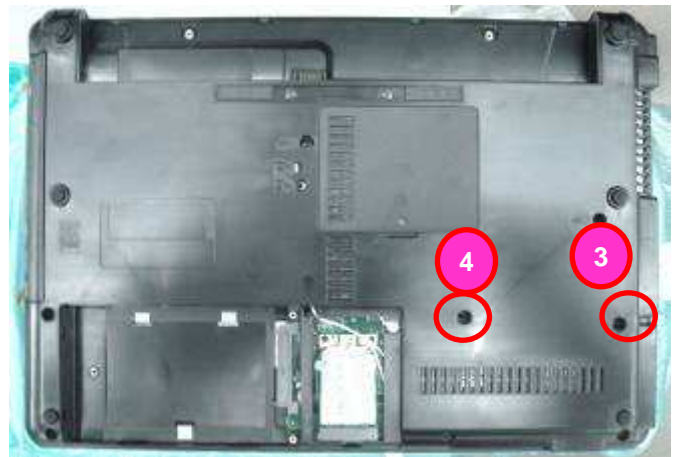
Ver. : 1.00 Date : 2009/05/18



- Loosen screws of TPCB.
(6052B0098201) * 2 (for 14");
(6052B0098201) * 2 (for 15")
❖ Torsion : 2.0 ± 0.2 Kgf · cm
❖ Screws can't be stripped or dropped into machine.



- Turn over the machine in the surface .
- Loosen screws of BTCB(6052A0021901) *2 .
❖ Torsion : 2.0 ± 0.2 Kgf · cm
❖ Screws can't be stripped or dropped into machine.



Point for attention : If finding some defects, notice the gaffer and assistant

Fixture list (Fixture standard)	Qty	Fixture list (Fixture standard)	Qty
Automatic hexagonal screw driver	1		

Tabulator : Zhang Ying Issuing department : IE



Working Instruction

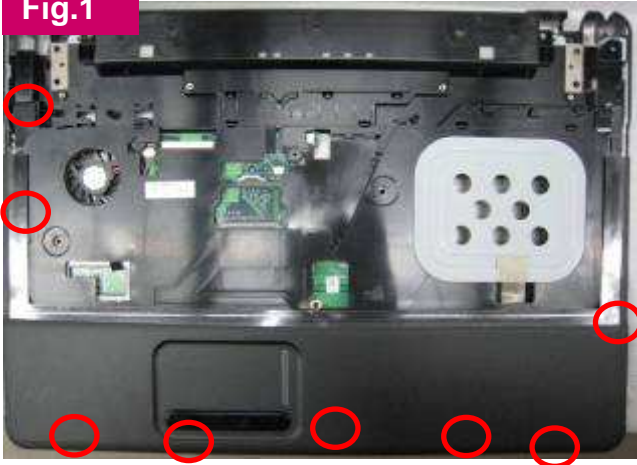
Document No. : SOP VV09 FA DIS-ASS'Y

Station : 14(1/1)

Name : Disassemble TPCB

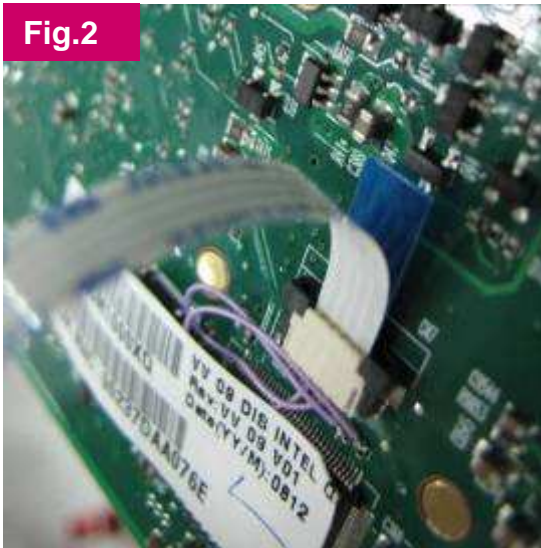
Ver. : 1.00 Date : 2009/05/18

Fig.1



1. Disassemble TPCB (Fig.1) °
2. Disassemble TPCB TOUCH PAD FFC from M/B(Fig.2) °

Fig.2



Point for attention : If finding some defects, notice the gaffer and assistant

Fixture list (Fixture standard)	Qty	Fixture list (Fixture standard)	Qty

Tabulator : Zhang Ying Issuing department : IE



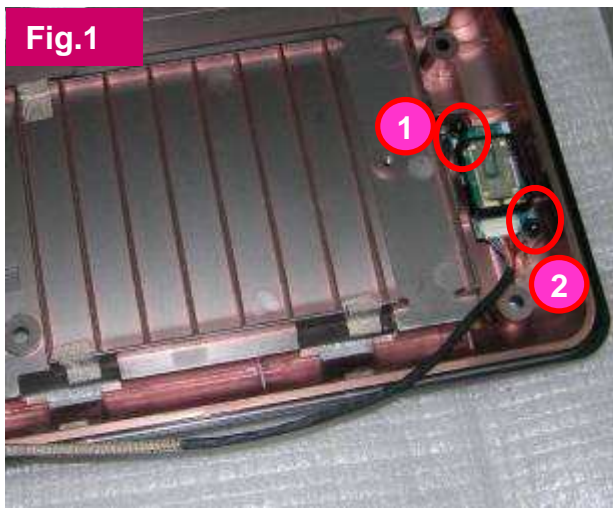
Working Instruction

Document No. : SOP VV09 FA DIS-ASS'Y

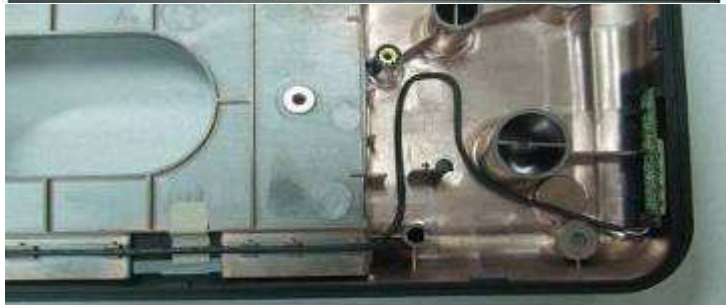
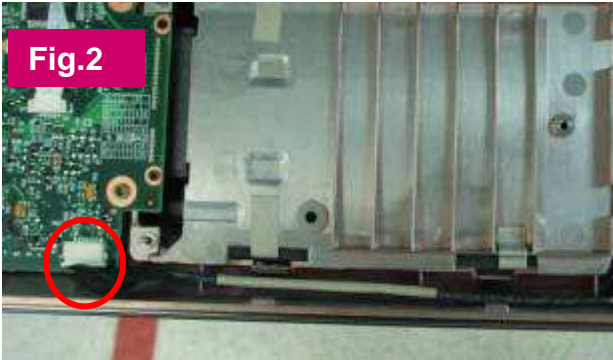
Station : 15(1/1)

Name : Disassemble Bluetooth

Ver. : 1.00 Date : 2009/05/18



1. Loosen screws of Bluetooth (6052A0004501) *2
2. Disassemble Bluetooth Cable from MB CNTR (Fig.2)
3. Disassemble Cable and Bluetooth
 - ❖ Torsion : 1.0 ± 0.2 Kgf · cm
 - ❖ Screws can't be stripped or dropped into machine.



Point for attention : If finding some defects, notice the gaffer and assistant

Fixture list (Fixture standard)	Qty	Fixture list (Fixture standard)	Qty
Automatic crossing screw driver	1		

Tabulator : Zhang Ying Issuing department : IE



Working Instruction

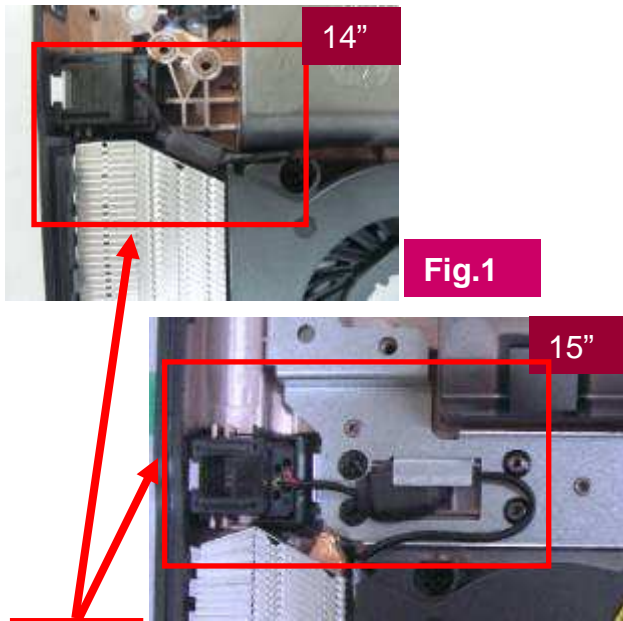
Document No. : SOP VV09 FA DIS-ASS'Y

Station : 16(1/1)

Name : Loosen screws of M/B and ODD extension board

Ver. : 1.00

Date : 2009/05/18



- Loosen screws of M/B (6052A0034902) * 1 (Fig.1) .
 - ❖ Torsion : 2.0 ± 0.2 Kgf · cm
 - ❖ Screws can't be stripped or dropped into machine.
- Disassemble RJ11 Cable (Fig.1).
 - ❖ The machine have not Modem, which disassemble the False shell (6051B0409801) . (Fig.3).

FOR 15" ONLY

- Loosen screws of ODD extension board (6052A0034902) *2 .
 - ❖ Torsion : 2.0 ± 0.2 Kgf · cm
 - ❖ Screws can't be stripped or dropped into machine.

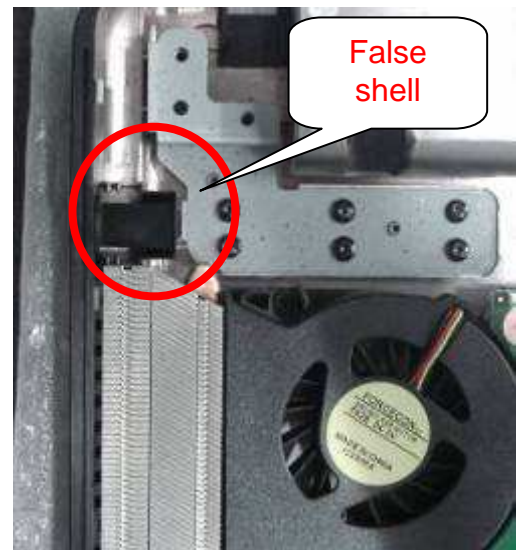
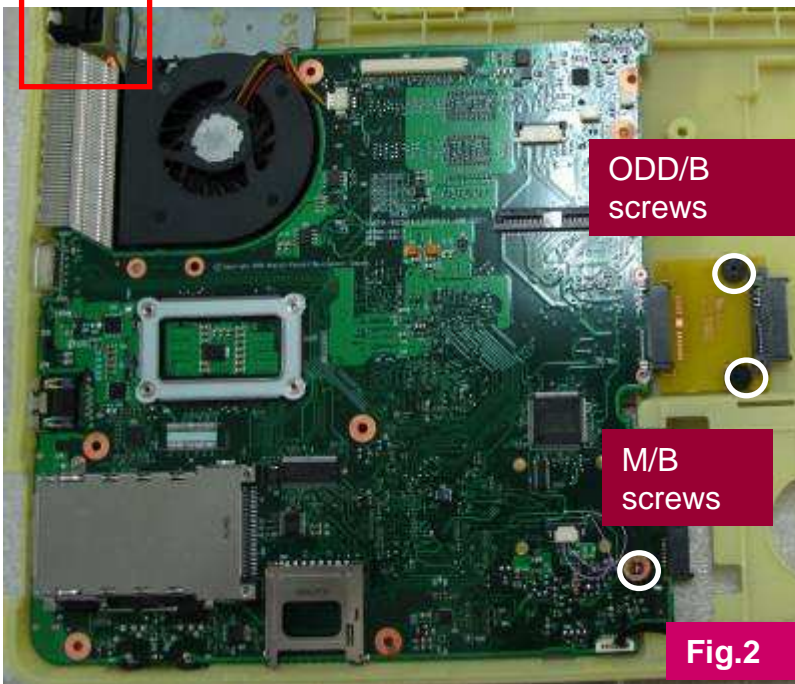


Fig.3

Point for attention : If finding some defects, notice the gaffer and assistant

Fixture list (Fixture standard)	Qty	Fixture list (Fixture standard)	Qty
Automatic crossing screw driver	1		

Tabulator : Zhang Ying

Issuing department : IE



Working Instruction

Document No. : SOP VV09 FA DIS-ASS'Y

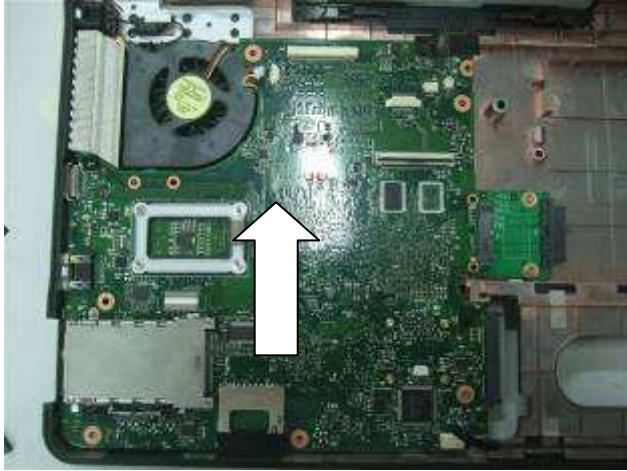
Station : 17(1/1)

Name : Disassemble FAN Cable and M/B

Ver. : 1.00

Date : 2009/05/18

Fig.1



1. Disassemble FAN Cable CNTR , Fig.2, Fig.3 ◦

2. Take out M/B ◦

❖ Disassemble above the M/B first by right hand;

❖ Please don't touch LED light part while taking and fetching M/B.

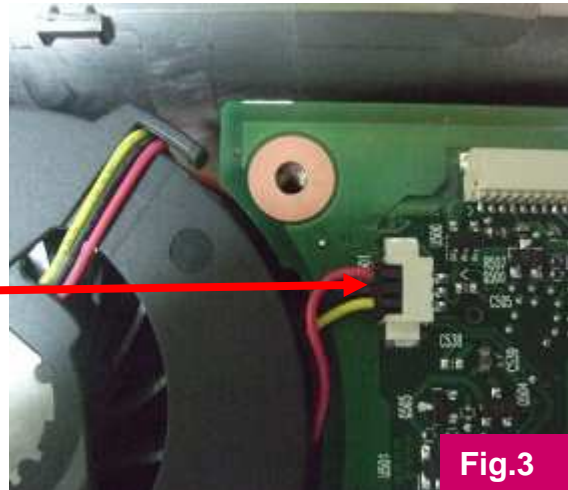


Fig.3

Fig.2

Point for attention : If finding some defects, notice the gaffer and assistant

Fixture list (Fixture standard)	Qty	Fixture list (Fixture standard)	Qty
Automatic crossing screw driver	1		

Tabulator : Zhang Ying

Issuing department : IE



Working Instruction

Document No. : SOP VV09 FA DIS-ASS'Y

Station : 18(1/1)

Name : Disassemble FAN

Ver. : 1.00 Date : 2009/05/18

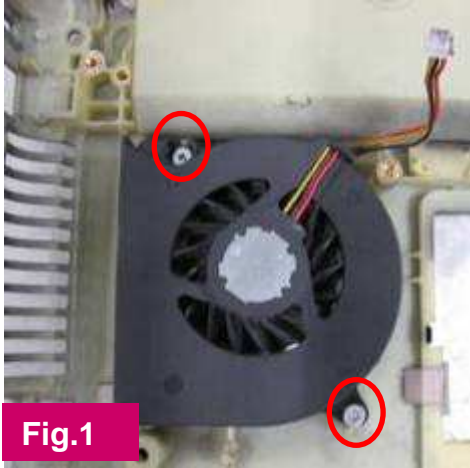


Fig.1

1. Loosen screws of FAN (6052A0003501) * 2 °
 - ❖ Torsion : 2.0 ± 0.2 Kgf · cm
 - ❖ Screws can't be stripped .
2. Take down FAN (6033B0019801).

Point for attention : If finding some defects, notice the gaffer and assistant

Fixture list (Fixture standard)	Qty	Fixture list (Fixture standard)	Qty
Automatic crossing screw driver	1		

Tabulator : Zhang Ying Issuing department : IE



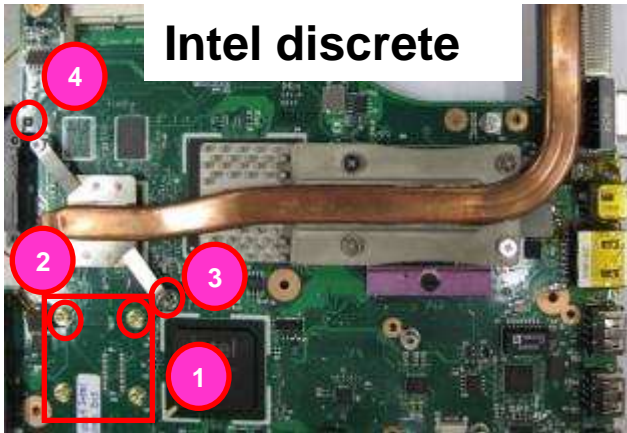
Working Instruction

Document No. : SOP VV09 FA DIS-ASS'Y

Station : 19(1/2)

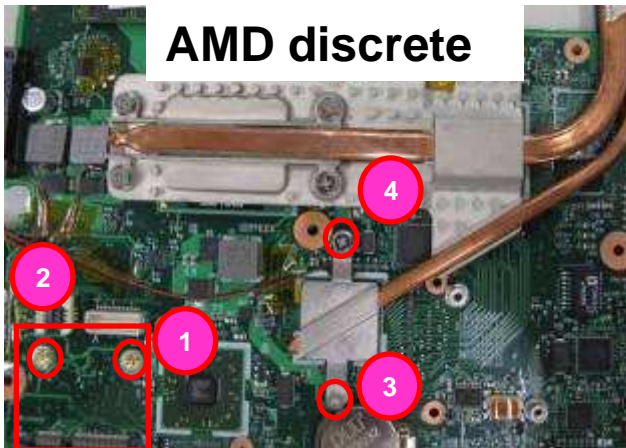
Name : Disassemble WLAN and Loosen screws Ver. : 1.00

Date : 2009/05/18



For platform without WLAN, needn't to disassemble WLAN

1. Put MB on supporting fixture.
2. Loosen two screws (6052A0034902) and take down WLAN. (Fig.1)
3. Loosen screws of thermal elastic*2
 - ❖ Torsion : 1.5 ± 0.2 Kgf · cm
 - ❖ Screws can't be stripped .



Point for attention : If finding some defects, notice the gaffer and assistant

Fixture list (Fixture standard)	Qty	Fixture list (Fixture standard)	Qty
Automatic crossing screw driver	1		
VV09 M/B B side supporting fixture	1		

Tabulator : Zhang Ying Issuing department : IE



Working Instruction

Document No. : SOP VV09 FA DIS-ASS'Y

Station : 19(2/2)

Name : Assemble Wireless Card

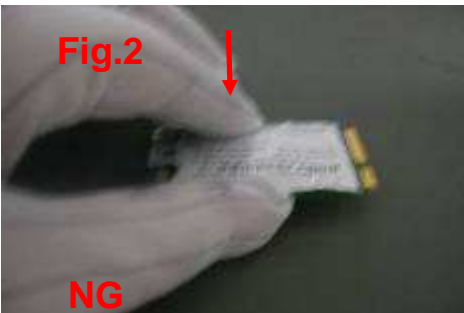
Ver. : 1.00

Date : 2009/5/18



1. Pick and place 1PCS Wireless Card every time, only hold the two sides of RAM with figures(Fig.1)

- ❖Wear the gloves, pay attention to ESD.
- ❖Forbid pressing one side of Wireless Card and picking it on the other side(Fig.2 and Fig.3)
- ❖Forbid holding the two surfaces of Wireless Card(Fig.4)
- ❖Forbid fetching more than two Wireless Card at the same time(Fig.5)
- ❖Several Wireless Card can't touch each other, especially the Golden figures(Fig.6)



press one side of Wireless Card and picking it on the other side

Fetch more than two Wireless Card at the same time



Several Wireless Card can't touch each other, especially the Golden figures



hold the two surfaces of Wireless Card

Point for attention : If finding some defects, notice the gaffer and assistant

Fixture list (Fixture standard)	Qty	Fixture list (Fixture standard)	Qty

Tabulator : Zhang Ying

Issuing department : IE



Working Instruction

Document No. : SOP VV09 FA DIS-ASS'Y

Station : 20(1/1)

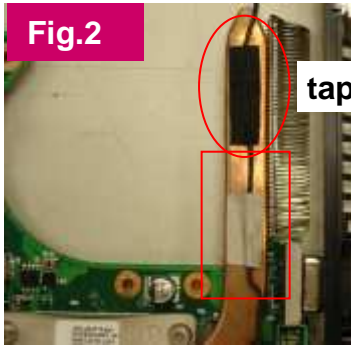
Name : Take down RAM and 15" ODD extension board Ver. : 1.00 Date : 2009/05/18

Fig.1



1. Put MB on supporting fixture.
2. Take down DDR ◦ (IF have two , need disassemble the two DDR)
3. Tear the tape of acetic acid (6054A0076201) *1 and gasket (6054B0430101) *1 from RJ11 Cable . (Fig.2)

Fig.2



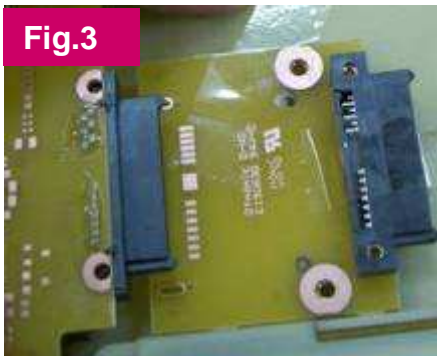
tape of acetic acid

gasket

FOR 15" ONLY

4. Take down 15" ODD extension board , Fig.3 ◦

Fig.3



Point for attention : If finding some defects, notice the gaffer and assistant

Fixture list (Fixture standard)	Qty	Fixture list (Fixture standard)	Qty
Automatic crossing screw driver	1		
VV09 M/B B side supporting fixture	1		

Tabulator : Zhang Ying Issuing department : IE



Working Instruction

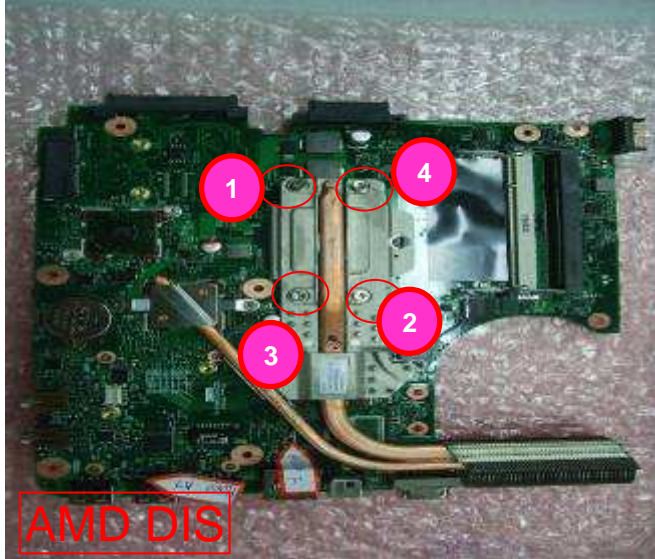
Document No. : SOP VV09 FA DIS-ASS'Y

Station : 22(1/2)

Name : Loosen screws and take down THERMAL

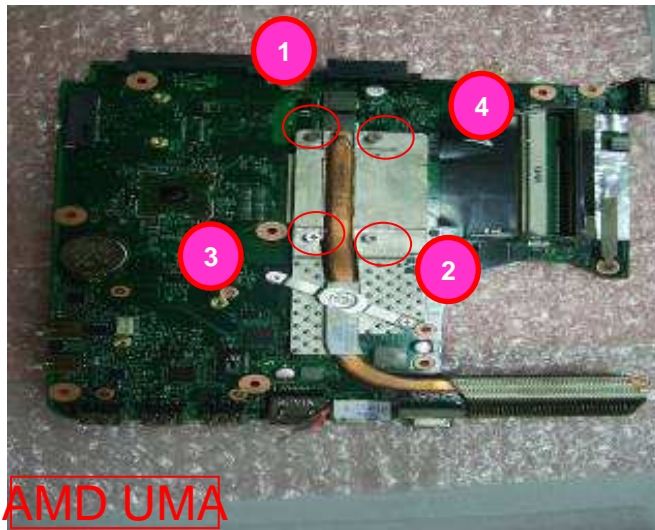
Ver. : 1.00

Date : 2009/05/18



1. Put MB on supporting fixture.
2. Loosen four screws of Thermal
 - ❖ Torsion : 1.5 ± 0.2 Kgf · cm
 - ❖ Screws can't be stripped .
 - ❖ Don't hold the Copper Pipe of Thermal.
3. Take down CPU Thermal.

6043B0065101	THERMAL MODULE,AMD,DISCRETE
6043B0065201	THERMAL MODULE,AMD,UMA
6043B0065301	THERMAL MODULE,INTEL,UMA
6043B0065401	THERMAL MODULE,INTEL,DISCRETE



Point for attention : If finding some defects, notice the gaffer and assistant

Fixture list (Fixture standard)	Qty	Fixture list (Fixture standard)	Qty
Automatic crossing screw driver	1		
VV09 M/B B side supporting fixture	1		

Tabulator : Zhang Ying Issuing department : IE

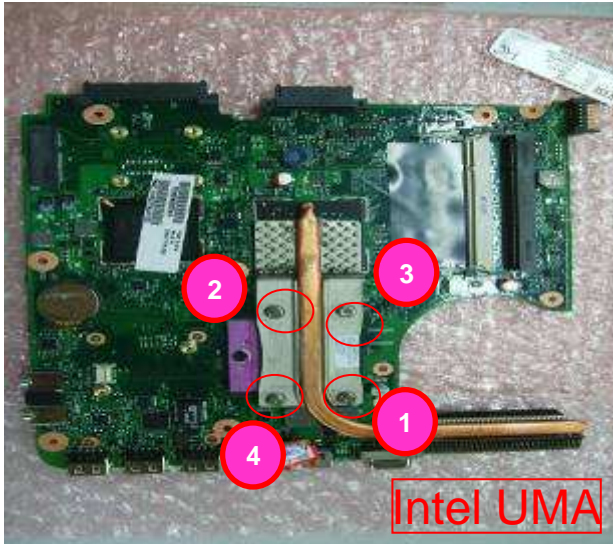


Working Instruction

Document No. : SOP VV09 FA DIS-ASS'Y

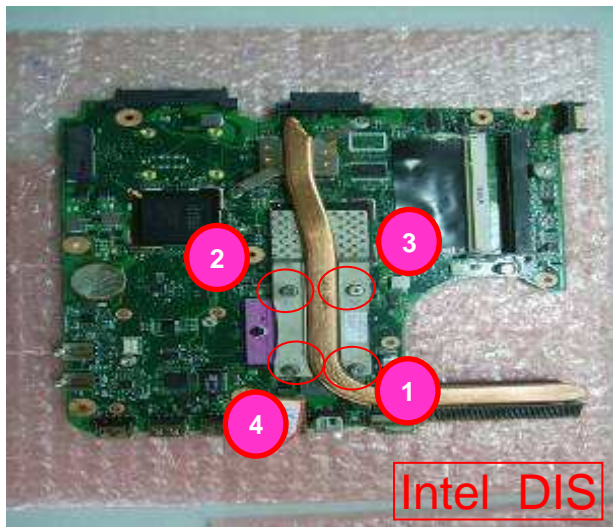
Station : 22(2/2)

Name : Loosen screws and take down THERMAL Ver. : 1.00 Date : 2009/05/18



1. Put MB on supporting fixture.
2. Loosen four screws of Thermal
 - ❖ Torsion : 1.5 ± 0.2 Kgf · cm
 - ❖ Screws can't be stripped .
 - ❖ Don't hold the Copper Pipe of Thermal.
3. Take down CPU Thermal.

6043B0065101	THERMAL MODULE,AMD,DISCRETE
6043B0065201	THERMAL MODULE,AMD,UMA
6043B0065301	THERMAL MODULE,INTEL,UMA
6043B0065401	THERMAL MODULE,INTEL,DISCRETE



Point for attention : If finding some defects, notice the gaffer and assistant

Fixture list (Fixture standard)	Qty	Fixture list (Fixture standard)	Qty
Automatic crossing screw driver	1		
VV09 M/B B side supporting fixture	1		

Tabulator : Zhang Ying Issuing department : IE



Working Instruction

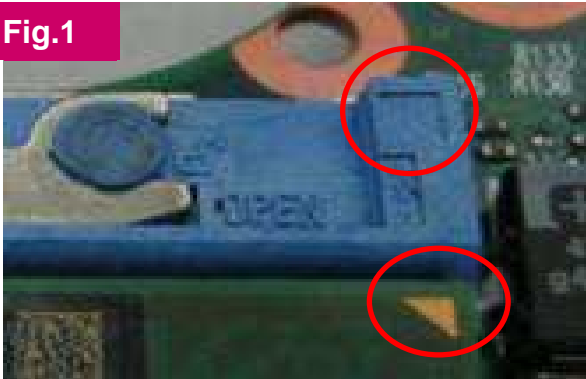
Document No. : SOP VV09 FA DIS-ASS'Y

Station : 23(1/1)

Name : Take out CPU

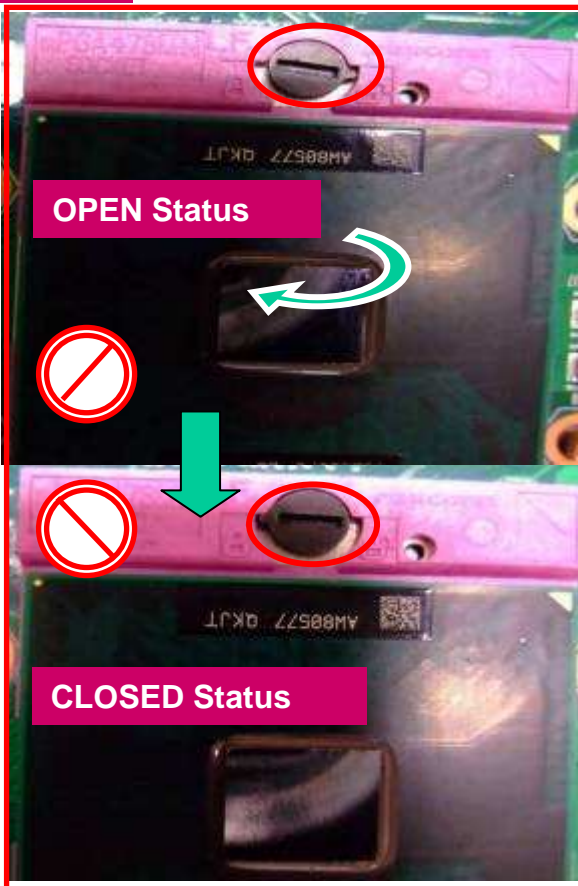
Ver. : 1.00 Date : 2009/05/18

Fig.1



1. Put MB on supporting fixture.
2. Take down CPU from CPU SOCKET with suck pen.
(take down it in counter clockwise)

Fig.2



Point for attention : If finding some defects, notice the gaffer and assistant

Fixture list (Fixture standard)	Qty	Fixture list (Fixture standard)	Qty
Flat screw driver	1		
suck pen	1		
VV09 M/B B side supporting fixture	1		

Tabulator : Zhang Ying Issuing department : IE



Working Instruction

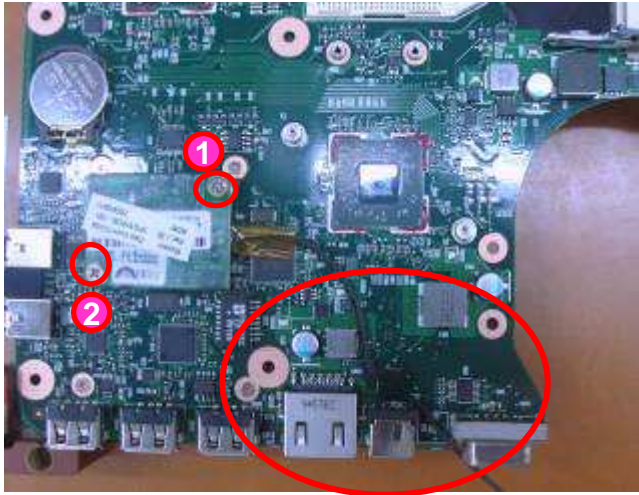
Document No. : SOP VV09 FA DIS-ASS'Y

Station : 24(1/1)

Name : Take down MODEM and RJ11 cable

Ver. : 1.00 Date : 2009/05/18

Fig.1



1. Put M/B on supporting fixture
2. Loosen screws (6052A0034902) * 2 and take down MODEM from M/B , (Fig1, Fig2)
3. Take down RJ11 CABLE (6017B0119501) from Modem. (Fig.3)

❖ Torsion : 1.5 ± 0.2 Kgf · cm
 ❖ Screws can't be stripped

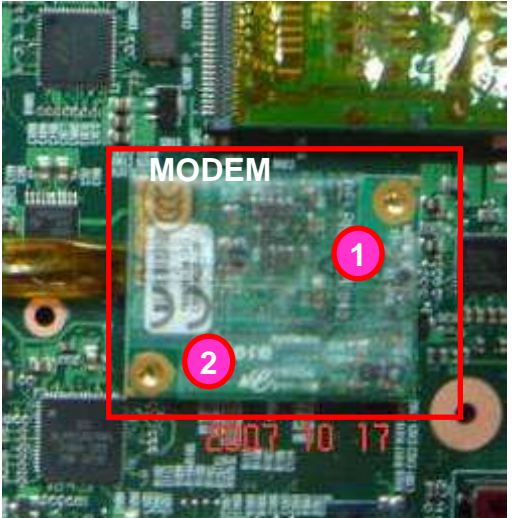


Fig.2

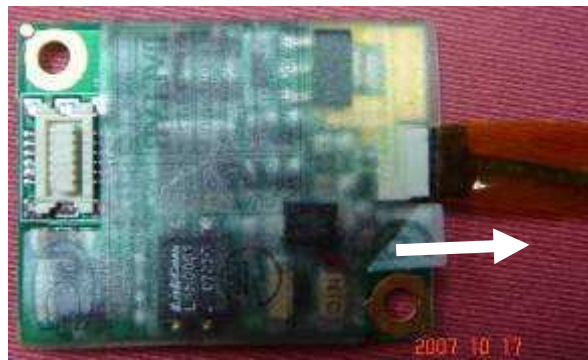


Fig.2

Point for attention : If finding some defects, notice the gaffer and assistant

Fixture list (Fixture standard)	Qty	Fixture list (Fixture standard)	Qty
Automatic crossing screw driver	1		
VV09 M/B B side supporting fixture	1		



Working Instruction

Document No. : SOP VV09 FA DIS-ASS'Y

Station : 25(1/1)

Name : Visual inspect M/B

Ver. : 1.00

Date : 2009/05/18

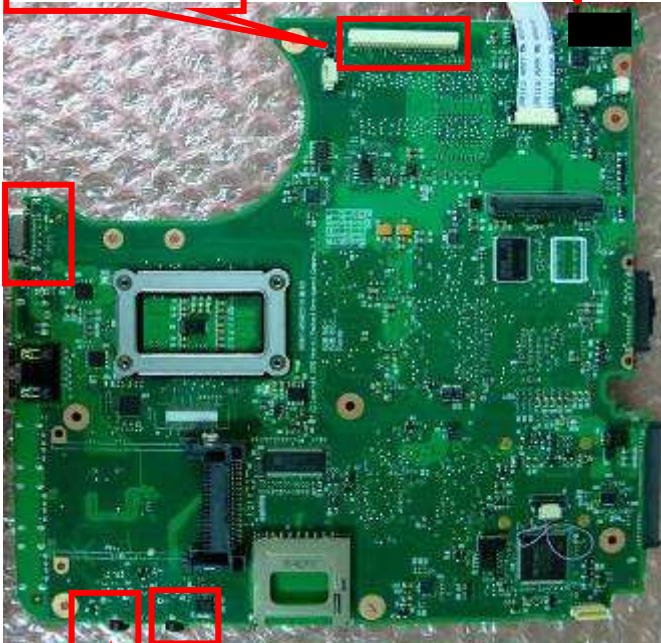


Mylar

1. Cosmetic inspecting.

- ❖ Don't touch the LED lamp fetching M/B .
- ❖ Inspect the cable manager dropped or not .
- ❖ Inspect Audio Jack iron part coming off or not.
- ❖ Inspect LCM CNTR PIN askew and cracked or not .

LCM CNTR



Audio Jack

MIC Jack

Point for attention : If finding some defects, notice the gaffer and assistant

Fixture list (Fixture standard)	Qty	Fixture list (Fixture standard)	Qty

Tabulator : Zhang Ying

Issuing department : IE