



Enter the world of infinite mobility:

Take Toshiba's latest notebook solutions

Intel® Centrino™ mobile technology

discover a truly mobile network society

- Breakthrough mobile performance
 - >> supports faster processing at lower power
- Integrated Wireless LAN capabilities
 - >> keeps user securely and seamlessly connected in and out of the office
- Extended battery life
 - >> Increases working independence, improves efficient use of time
- Thinner, lighter design
 - >> makes devices smaller, easier to carry, better to use
 - >> offers extreme mobility

How to find the right notebook including Intel® Centrino™ Mobile Technology

	Satellite Pro M10	Tecra S1	Tecra M1	Portégé R100
Is price a key issue for your company?	●	○	○	○
Do you require a 15" screen (ideal for desktop replacement)?	○	○	○	○
Are you looking for the very best in technology?	○	○	○	○
Are you looking for enhanced multimedia performance?	○	○	○	○
Do you require maximum platform stability for at least 12 months?	○	○	○	○
Is an ultra-thin & light form factor important to you?	○	○	○	○
Is common docking important to your organisation?	○	○	○	○
Do you need maximum flexibility with cross-compatible Slim SelectBay modularity?	○	○	○	○
Is a 3-year international warranty an important factor in your buying decision?	○	○	○	○

- Requirement met in full
- Requirement met in part

The Portégé series.

The world's slimmest wireless ultra-portable.

An unbeatable choice for highly mobile professionals who refuse to compromise between performance and portability. The slimmest wireless ultra-portable ever built, it combines sensational looks with the latest mobile technologies to create the world's most desirable ultra-portable office.

The Portégé 2010



The ultimate ultra-portable.

The Portégé R100 is the ultimate ultra-portable, packing breathtaking performance into an ultra-thin, super-lightweight wireless notebook. Its unprecedented portability and Intel® Centrino™ mobile technology maximise working freedom for highly mobile executives.

The Portégé R100 series



A masterpiece of ultra-portable wireless computing.

The prestigious Portégé 4010 represents the outstanding solution for the mobile computer user. Designed for uncompromising portability, this extraordinary notebook packs state-of-the-art wireless technologies and astonishing performance into an exquisite new high-tech case.

The Portégé 4010



The Portégé 3500

Boost your productivity with the smartest fusion of notebook and Tablet PC.

Combining the uncompromising power of a wireless business notebook with the versatility of a Tablet PC, the Portégé 3500 represents a quantum leap in mobile productivity. This convertible can be carried all day, used in any environment and runs the most power business applications, making it ideal for mobile users who want to maximise efficiency.

The Pocket PC series.

Stay perfectly organised and brilliantly entertained wherever you go.

This super-thin Pocket PC is the ultimate personal assistant, keeping you totally organised, informed and entertained on the move. It's incredibly slim and lightweight and also fully expandable. All at a price that's amazingly easy on your pocket.

The Pocket PC e330



The Pocket PC e350

Ultra-slim and powerful – the multi-functional companion for travel and entertainment.

This super-thin Pocket PC is the ultimate personal assistant, keeping you totally organised, informed and entertained on the move. It's incredibly slim and lightweight and also fully expandable. All at a price that's amazingly easy on the pocket.

Experience the ultimate in wireless pocket computing.

The revolutionary Toshiba Pocket PC e740 sets a new benchmark for top-end PDA technology. Making it the ultimate wireless personal productivity tool for today's mobile professional. In fact, it's one of the best connected Pocket PCs you can buy.

The Pocket PC e740



The Pocket PC e750 WiFi

Experience the ultimate in wireless pocket computing.

The revolutionary Pocket PC e750 WiFi sets a new benchmark in top-end PDA technology. Phenomenal processing power and on-board Wireless LAN make it the ultimate personal productivity tool for today's mobile professional.

For further information on the Toshiba range of mobile solutions contact

your nearest Toshiba Authorised Reseller.

You can also visit the Toshiba web sites: www.computers.toshiba.nl
www.computers.toshiba.be

or call us at: (NL) 0800-TOSHIBA (numeric 0800-8674422)
(BE) 00 32 (0) 2/7158700

TOSHIBA INFORMATION SYSTEMS BENELUX
Rivium Boulevard 41
2909 LK Capelle a/d IJssel
The Netherlands
Infoline: 0800-TOSHIBA (numeric 0800-8674422)
Fax: 0031 (0) 10 2882 390
Internet: www.computers.toshiba.nl

TOSHIBA INFORMATION SYSTEMS BELGIUM
Excellisoraan 40
1930 Zaventem
Belgium
Phone: 00 32 (0) 2/7158700
Fax: 00 32 (0) 2/7253030
Internet: www.computers.toshiba.be



March 2003

Enter the world of infinite mobility:

The most inspiring mobile computing range.

As a leading pioneer of mobile solutions, Toshiba's mission is to enable a truly mobile network society in which everyone communicates and shares information anytime, anywhere. This vision is supported by a total commitment to innovation, premium quality and outstanding customer service.

- Unrivalled innovation – unique experience and massive R&D investment ensure the best-available mobile solutions
- Premium quality & reliability – rigorous testing and state-of-the-art components create technology guaranteed to last for years
- Assured compatibility – all solutions easily integrate into any environment for maximum investment protection
- Intelligent design – user-oriented design philosophy combines aesthetics with world-class ergonomics and functionality
- Superior service & support – outstanding warranty packages and support network provide complete peace of mind



Toshiba recommends Microsoft® Windows® XP Professional for mobile computing



The perfect solution for every user and application.

The Satellite Pro series.

Powerful flexibility in the value business line.

The Satellite Pro 2100 takes value computing to a new level, offering stunning performance for every small or medium size business at an affordable price. Cutting-edge graphics, wireless-upgradeable connectivity and easy multimedia control also feature in this uncompromising choice.

The Satellite Pro 2100



A milestone in wireless connectivity, high performance and outstanding graphics quality in the value business line.

The Satellite Pro 6100 series is the perfect wireless solution for every business looking for groundbreaking mobile technology at an affordable price. It raises performance and graphics to stunning new levels, together with unrivalled quality and reliability.

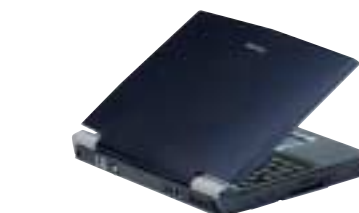
The Satellite Pro 6100



High-end mobile multimedia and affordability beautifully combined.

The ultimate mobile computing solution for the professional user looking for uncompromising multimedia and excellent performance at an affordable price. Intel® Centrino™ mobile technology improves battery life and wireless connectivity to enhance mobile productivity.

The Satellite Pro M10



The Tecra series.

The future-proof corporate platform with superior performance and fully integrated wireless connectivity.

The groundbreaking Tecra 9100 series combines long-term platform stability with top-of-the-range mobile Intel® Pentium® 4 processor - M technology, fully integrated wireless connectivity and common docking for greater freedom to work and network anywhere, anytime.

The Tecra 9100



The finest combination of scalability and value in corporate computing.

The Tecra S1 offers outstanding stability, scalability and value for money in an innovative design. The latest breakthroughs, including Intel® Centrino™ mobile technology, bring the benefits of seamless wireless connectivity and exceptional mobile performance to corporate computing.

The Tecra S1 series



An extraordinary blend of stability, performance and portability for the mobile executive.

The leading edge Tecra M1 series raises mobile capability across entire corporations. Guaranteed long-term platform stability combines with the best ever blend of mobile performance, battery life and wireless connectivity, courtesy of Intel® Centrino™ mobile technology.

The Tecra M1 series



For further information on the Toshiba range of mobile solutions contact your nearest Toshiba Authorised Reseller. You can also visit the Toshiba web sites: www.computers.toshiba.nl or www.computers.toshiba.be or call us on (NL) 0800-TOSHIBA (numeric 0800-8674422) and (BE) 00 32 (0) 2/7158700

Choose freedom. www.computers.toshiba.nl | www.computers.toshiba.be

TOSHIBA

Choose freedom. www.computers.toshiba.nl | www.computers.toshiba.be

TOSHIBA

Enter the world of infinite mobility: The most inspiring mobile computing range.

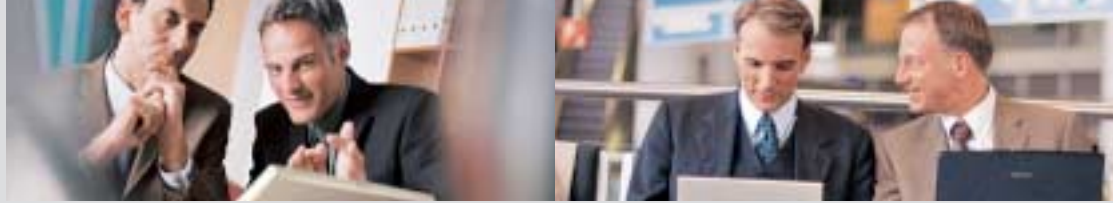
As a leading pioneer of mobile solutions, Toshiba's mission is to enable a truly mobile network society in which everyone communicates and shares information anytime, anywhere. This vision is supported by a total commitment to innovation, premium quality and outstanding customer service.

- Unrivalled innovation – unique experience and massive R&D investment ensure the best-available mobile solutions
- Premium quality & reliability – rigorous testing and state-of-the-art components create technology guaranteed to last for years
- Assured compatibility – all solutions easily integrate into any environment for maximum investment protection
- Intelligent design – user-oriented design philosophy combines aesthetics with world-class ergonomics and functionality
- Superior service & support – outstanding warranty packages and support network provide complete peace of mind



Toshiba recommends Microsoft® Windows® XP Professional for mobile computing





The perfect solution for every user and application.

The Satellite Pro series.



Powerful flexibility in the value business line.

The Satellite Pro 2100 takes value computing to a new level, offering stunning performance for every small or medium size business at an affordable price. Cutting-edge graphics, wireless-upgradeable connectivity and easy multimedia control also feature in this uncompromising choice.

The Satellite Pro 2100

A milestone in wireless connectivity, high performance and outstanding graphics quality in the value business line.

The Satellite Pro 6100 series is the perfect wireless solution for every business looking for groundbreaking mobile technology at an affordable price. It raises performance and graphics to stunning new levels, together with unrivalled quality and reliability.



The Satellite Pro 6100



High-end mobile multimedia and affordability beautifully combined.

The ultimate mobile computing solution for the professional user looking for uncompromising multimedia and excellent performance at an affordable price. Intel® Centrino™ mobile technology improves battery life and wireless connectivity to enhance mobile productivity.

The Satellite Pro M10

The Tecra series.

The future-proof corporate platform with superior performance and fully integrated wireless connectivity.

The groundbreaking Tecra 9100 series combines long-term platform stability with top-of-the-range mobile Intel® Pentium® 4 processor - M technology, fully integrated wireless connectivity and common docking for greater freedom to work and network anywhere, anytime.



The Tecra 9100



The finest combination of scalability and value in corporate computing.

The Tecra S1 offers outstanding stability, scalability and value for money in an innovative design. The latest breakthroughs, including Intel® Centrino™ mobile technology, bring the benefits of seamless wireless connectivity and exceptional mobile performance to corporate computing.

The Tecra S1 series

An extraordinary blend of stability, performance and portability for the mobile executive.

The leading edge Tecra M1 series raises mobile capability across entire corporations. Guaranteed long-term platform stability combines with the best ever blend of mobile performance, battery life and wireless connectivity, courtesy of Intel® Centrino™ mobile technology.



The Tecra M1 series

The Portégé series.

The world's slimmest wireless ultra-portable.

An unbeatable choice for highly mobile professionals who refuse to compromise between performance and portability. The slimmest wireless ultra-portable ever built, it combines sensational looks with the latest mobile technologies to create the world's most desirable ultra-portable office.

The Portégé 2010



The ultimate ultra-portable.

The Portégé R100 is the ultimate ultra-portable, packing breathtaking performance into an ultra-thin, super-lightweight wireless notebook. Its unprecedented portability and Intel® Centrino™ mobile technology maximise working freedom for highly mobile executives.

The Portégé R100 series



A masterpiece of ultra-portable wireless computing.

The prestigious Portégé 4010 represents the outstanding solution for the mobile computer user. Designed for uncompromising portability, this extraordinary notebook packs state-of-the-art wireless technologies and astonishing performance into an exquisite new high-tech case.

The Portégé 4010



Boost your productivity with the smartest fusion of notebook and Tablet PC.

Combining the uncompromising power of a wireless business notebook with the versatility of a Tablet PC, the Portégé 3500 represents a quantum leap in mobile productivity. This convertible can be carried all day, used in any environment and runs the most power business applications, making it ideal for mobile users who want to maximise efficiency.

The Portégé 3500



The Pocket PC series.

Stay perfectly organised and brilliantly entertained wherever you go.

This super-thin Pocket PC is the ultimate personal assistant, keeping you totally organised, informed and entertained on the move. It's incredibly slim and lightweight and also fully expandable. All at a price that's amazingly easy on your pocket.

The Pocket PC e330



Ultra-slim and powerful – the multi-functional companion for travel and entertainment.

This super-thin Pocket PC is the ultimate personal assistant, keeping you totally organised, informed and entertained on the move. It's incredibly slim and lightweight and also fully expandable. All at a price that's amazingly easy on the pocket.

The Pocket PC e350



Experience the ultimate in wireless pocket computing.

The revolutionary Toshiba Pocket PC e740 sets a new benchmark for top-end PDA technology. Making it the ultimate wireless personal productivity tool for today's mobile professional. In fact, it's one of the best connected Pocket PCs you can buy.

The Pocket PC e740



Experience the ultimate in wireless pocket computing.

The revolutionary Pocket PC e750 WiFi sets a new benchmark in top-end PDA technology. Phenomenal processing power and on-board Wireless LAN make it the ultimate personal productivity tool for today's mobile professional.

The Pocket PC e750 WiFi



For further information on the Toshiba range of mobile solutions contact your nearest Toshiba Authorised Reseller.

You can also visit the Toshiba web sites: www.computers.toshiba.nl or www.computers.toshiba.be or call us on (NL) 0800-TOSHIBA (numeric 0800-8674422) and (BE) 00 32 (0) 2/7158700



Enter the world of infinite mobility:

Take Toshiba's latest notebook solutions



Intel® Centrino™ mobile technology



discover a truly mobile network society

- Breakthrough mobile performance
 - >> supports faster processing at lower power
- Integrated Wireless LAN capabilities
 - >> keeps user securely and seamlessly connected in and out of the office
- Extended battery life
 - >> Increases working independence, improves efficient use of time
- Thinner, lighter design
 - >> makes devices smaller, easier to carry, better to use
 - >> offers extreme mobility

How to find the right notebook including Intel® Centrino™ Mobile Technology

	Satellite Pro M10	Tecra S1	Tecra M1	Portégé R100
Is price a key issue for your company?		●		
Do you require a 15" screen (ideal for desktop replacement)?	○	●		
Are you looking for the very best in technology?			●	
Are you looking for enhanced multimedia performance?	●		○	
Do you require maximum platform stability for at least 12 months?		●	●	
Is an ultra-thin & light form factor important to you?				●
Is common docking important to your organisation?	●	●	●	
Do you need maximum flexibility with cross-compatible Slim SelectBay modularity?	●	●	●	
Is a 3-year international warranty an important factor in your buying decision?		●	●	●

● Requirement met in full

○ Requirement met in part



Model	Satellite Pro 2100 C 2.0 GHz/14" TFT/ 30 GB/256 MB/DVD-ROM/LAN		Satellite Pro 2100 P4-M 1.7 GHz/14" TFT/ 30 GB/256 MB/DVD-ROM/LAN/LINK		Satellite Pro 2100 P4-M 1.8 GHz/14.1" TFT/ 30 GB/256 MB/CD-RW-DVD-ROM/LAN/LINK		Satellite Pro 2100 P4-M 2.0 GHz/15" TFT/ 20 GB/256 MB/DVD-ROM/LAN		Satellite Pro 6100 P4-M 1.7 GHz/14.1" TFT/ 20 GB/256 MB/DVD-ROM/LAN		Satellite Pro 6100 P4-M 1.8 GHz/15.0" TFT/ 30 GB/256 MB/DVD-ROM/LAN/Wi-Fi		Satellite Pro 6100 P4-M 2.0 GHz/15.0" TFT/ 60 GB/256 MB/CD-RW-DVD-ROM/LAN/Wi-Fi/FT		Tecra 9100 P4-M 1.7 GHz/14.1" TFT/ 30 GB/256 MB/DVD/LAN/Wi-Fi		Portégé 2010 PIII 866/12.1" TFT/ 30 GB or 40 GB/256 MB/LAN/Wi-Fi		Portégé 4010 PIII-M 933 MHz/LV/12.1" TFT/ 30 GB/256 MB/DVD/LAN/Wi-Fi/FT		Portégé 3500 PIII-M 1.333 GHz/12.1" TFT/ 40 GB/256 MB/LAN/Wi-Fi/FT									
Processor	Mobile Intel® Celeron® processor, 2.0 GHz*, 400 MHz Front Side Bus, 256 KB 2nd level cache		Mobile Intel® Pentium® 4 Processor - M, 1.7 GHz*, 400 MHz Front Side Bus, 512 KB 2nd level cache		Mobile Intel® Pentium® 4 processor - M, 1.8 GHz*, 400 MHz Front Side Bus, 512 KB 2nd level cache		Mobile Intel® Pentium® 4 processor - M, 2.0 GHz*, 400 MHz Front Side Bus, 512 KB 2nd level cache		Mobile Intel® Pentium® 4 processor - M, 1.7 GHz*, 400 MHz Front Side Bus, 512 KB 2nd level cache		Mobile Intel® Pentium® 4 processor - M, 1.8 GHz*, 400 MHz Front Side Bus, 512 KB 2nd level cache		Mobile Intel® Pentium® 4 processor - M, 2.0 GHz*, 400 MHz Front Side Bus, 512 KB 2nd level cache		Mobile Intel® Pentium® 4 processor - M, 1.7 GHz*, 400 MHz Front Side Bus, 512 KB 2nd level cache		Ultra Low Voltage Mobile Intel® Pentium® III processor - M, 933 MHz*, 133 MHz Front Side Bus, 512 KB 2nd level cache		Low Voltage Mobile Intel® Pentium® III processor - M, 933 MHz*, 133 MHz Front Side Bus, 512 KB 2nd level cache		Mobile Intel® Pentium® III Processor - M, 1.333 GHz*, 133 MHz Front Side Bus, 512 KB 2nd level cache									
Display	14.1" TFT colour display				15" TFT colour display		14.1" TFT colour display		15.0" TFT colour display				14.1" TFT colour display		12.1" (30.7 cm) TFT polysilicon active matrix colour display		12.1" TFT polysilicon active matrix colour display		12.1" TFT poly-silicon active matrix colour display											
Internal video mode	Maximum number of colours: 16.7 million, resolution: 1,024 x 768										Maximum number of colours: 16.7 million, resolution: 1,024 x 768		Maximum number of colours: 16.7 million, resolution: 1,024 x 768		Maximum number of colours: 16.7 million, resolution: 1,024 x 768		Maximum number of colours: 16.7 million, resolution: 1,024 x 768		Maximum number of colours: 16.7 million, resolution: 1,024 x 768											
Hard disk	30 GB*, S.M.A.R.T.										20 GB* S.M.A.R.T.		30 GB* S.M.A.R.T.		60 GB* S.M.A.R.T.		30 GB*, S.M.A.R.T.		30.0 GB or 40.0 GB*, S.M.A.R.T.		30 GB*, S.M.A.R.T.		40 GB*, S.M.A.R.T.							
System memory	256 MB, maximum expandability: 512 MB, technology: DDR RAM		256 MB, maximum expandability: 1,024 MB, technology: DDR RAM										256 MB, maximum expandability: 1,024 MB, technology: DDR RAM		256 MB, maximum expandability: 1,024 MB, technology: DDR RAM		256 MB, maximum expandability: 1,024 MB, technology: DDR RAM		Standard 256 MB SDRAM, expandable to 512 MB		256 MB, maximum expandability: 1,024 MB, technology: SDRAM		256 MB, maximum expandability: 1,024 MB, technology: SDRAM							
CD-ROM, DVD-ROM, CD-RW/DVD-ROM	DVD-ROM drive, maximum speed: 24-speed CD-ROM, 8-speed DVD-ROM				CD-RW/DVD-ROM drive, maximum speed: 24-speed CD-ROM, 16-speed CD-R, 10-speed CD-RW, 8-speed DVD				Slim SelectBay DVD-ROM drive, maximum speed: 8-speed DVD-ROM				Slim Select Bay CD-RW/DVD-ROM drive, maximum speed: 24-speed CD-ROM, 8-speed CD-R, 8-speed CD-RW, 8-speed DVD				Slim SelectBay DVD-ROM drive, maximum speed: 8-speed DVD-ROM		-		Slim SelectBay DVD-ROM drive, maximum speed: 8-speed DVD-ROM		-							
Diskette drive	Fixed internal, 3.5", 1.44 MB										External USB 3.5", 1.44 MB										-		-		-		-			
Graphics adapter	NVIDIA® GeForce4™ 420 Go, 16 MB DDR Video RAM, BitBIT: 256 bit, 4 x AGP bus		NVIDIA® GeForce4™ 420 Go, 32 MB DDR Video RAM, BitBIT: 256 bit, 4 x AGP bus										NVIDIA® GeForce4™ 420 Go, 16 MB DDR Video RAM, BitBIT: 256 bit, 4 x AGP bus				NVIDIA® GeForce4™ 420 Go, 32 MB DDR Video RAM, BitBIT: 256 bit, 4 x AGP bus				S3® SuperSavage™ IXC-166, 16 MB internal, 128-bit BitBIT, 16 MB UMA SDRAM (shared)		Trident CyberALADDIN-T, 16 MB UMA, BitBIT: 128 bit, 4 x AGP bus		Trident CyberALADDIN-T, 16 MB UMA, BitBIT: 128 bit, 4 x AGP bus		Trident CyberALADDIN-T, 16 MB UMA, BitBIT: 128 bit, 4 x AGP bus			
Max. external video modes	Max. colours: 16.7 million, max. refresh rate: 100 Hz, max. resolution: 2,048 x 1,536, non-interlaced resolution with max. refresh rate: 1,600 x 1,200										Max. colours: 16.7 million, max. refresh rate: 100 Hz, max. resolution: 2,048 x 1,536, non-interlaced resolution with max. refresh rate: 1,600 x 1,200										Max. colours: 16.7 million, max. refresh rate: 85 Hz, max. resolution: 1,600 x 1,200, non-interlaced resolution with max. refresh rate: 1,280 x 1,024		Up to 1,600 x 1,200 resolution, up to 16.7 million colours, up to 85 MHz refresh rate non-interlaced (1,280 x 1,024)		Max. colours: 16.7 million, max. refresh rate: 85 Hz, max. resolution: 1,600 x 1,200, non-interlaced resolution with max. refresh rate: 1,280 x 1,024		Max. colours: 16.7 million, max. refresh rate: 85 Hz, max. resolution: 1,600 x 1,200, non-interlaced resolution with max. refresh rate: 1,280 x 1,024			
Keyboard	86 keys, 8 cursor keys, 8 Hot Keys, inlaid numeric keypad, Easy Keys for Internet access and DVD/CD/MP3 playback		86 keys, 8 cursor keys, 8 Hot Keys, inlaid numeric keypad, Easy Keys for Internet access and DVD/CD/MP3 playback, special features: Toshiba scroller										86 keys, 8 cursor keys, inlaid numeric keypad, 9 Hot Keys										86 keys, 8 cursor keys, inlaid numeric keypad, 9 Hot Keys		85 keys, 12 Hot Keys, 8 dedicated cursor keys, inlaid numeric keypad, Windows® key, euro key, Toshiba Console button and internet browser button		85 keys, 8 cursor keys, inlaid numeric keypad, 9 Hot Keys		85 keys, 8 cursor keys, inlaid numeric keypad, 10 Hot Keys	
Pointing device	Touch Pad										AccuPoint™ II consists of MousePoint (integrated in keyboard) and four MouseButtons, including two freely programmable buttons (integrated in palm rest); scroll function										AccuPoint™ II consists of MousePoint (integrated in keyboard) and four MouseButtons, including two freely programmable buttons (integrated in palm rest); scroll function		Touch Pad		AccuPoint™ II consists of MousePoint (integrated in keyboard) and four MouseButtons, including two freely programmable buttons (integrated in palm rest); scroll function		Tablet Pen, Touch Pad			
Wired communication	10/100 Base-TX Ethernet LAN, 56 Kbps data (V.90) and 14.4 Kbps fax (V.17) international V.90 modem										10/100 Base-TX Ethernet LAN, 56 Kbps data (V.90) and 14.4 Kbps fax (V.17) international V.90 modem										10/100 Base-TX Ethernet LAN, 56 Kbps data (V.90) and 14.4 Kbps fax (V.17) international V.90 modem		Integrated 10/100 Ethernet LAN chip, integrated international V.90 modem (56 Kbps data, 14.4 Kbps fax)		10/100 Base-TX Ethernet LAN, 56 Kbps data (V.90) and 14.4 Kbps fax international V.90 modem		10/100 Base-TX Ethernet LAN, 56 Kbps data (V.90) and 14.4 Kbps fax (V.17) international V.90 modem			
Wireless communication	Wireless LAN upgradeable, Fast InfraRed (FIR compliant)										Bluetooth™ upgradeable, Wireless LAN upgradeable, Fast InfraRed (FIR compliant)		Bluetooth™ upgradeable, Wireless LAN (802.11b network support, Wi-Fi compliant), Fast InfraRed (FIR compliant)		Bluetooth™ Wireless LAN (802.11b network support, Wi-Fi compliant), Fast InfraRed (FIR compliant)		Bluetooth™ upgradeable, Wireless LAN (802.11b network support, Wi-Fi compliant), Fast InfraRed (FIR compliant)		Integrated wireless LAN (802.11b network support, Wi-Fi™ compliant), Fast InfraRed		Bluetooth™, Wireless LAN (Mini-PCI) 802.11b network support, Wi-Fi™ compliant, Fast InfraRed (4 Mbps network support, FIR compliant)		Bluetooth™, Wireless LAN (802.11b network support, Wi-Fi™ compliant), Fast InfraRed (FIR compliant)							
Sound system	Yamaha, 16-bit stereo, SoundBlaster Pro 3.01 and Windows Sound System 2.0 compatible, MIDI & Wavetable synthesis, built-in stereo speakers										Yamaha 16-bit stereo, SoundBlaster Pro 3.01 and Windows Sound System 2.0 compatible, MIDI & Wavetable synthesis, built-in stereo speakers										Yamaha 16-bit stereo, SoundBlaster Pro 3.01 and Windows Sound System 2.0 compatible, MIDI & Wavetable synthesis, built-in stereo speakers		16-bit stereo, MIDI synthesis, built-in speaker		ALI M1535 integrated 16-bit stereo, MIDI (play back), built-in stereo speakers		ALI-M1535, 16-bit stereo, MIDI synthesis, built-in speaker			
BIOS	ACPI: 1.0b, system management BIOS: 2.3										ACPI: 1.0b, system management BIOS: 2.3										ACPI (1.0b), SM BIOS 2.3		ACPI: 1.0b, SM BIOS 2.3		ACPI: 1.0b, system management BIOS: 2.3		ACPI: 1.0b, system management BIOS: 2.3			
Interfaces	DC-in, external microphone, external monitor, Fast InfraRed (FIR), headphone, parallel (ECP), RJ-11, RJ-45, TV-out (NTSC/PAL; RCA connector), 3 x USB		DC-in, external microphone, external monitor, Fast InfraRed (FIR), headphone, iLINK® (IEEE 1394), parallel (ECP), RJ-11, RJ-45, SD™ Card slot, TV-out (NTSC/PAL; RCA connector), 3 x USB										DC-in, expansion bus connector, external microphone, external monitor, Fast Infrared Port (FIR), headphone, parallel (ECP), PS/2™ mouse or keyboard, RJ-11, RJ-45, SD Card slot, serial, TV-out (NTSC/PAL; RCA connector), 2 x USB				DC-in, external microphone, external monitor, Fast Infrared port (FIR), headphone, iLINK® (IEEE 1394), parallel, PS/2™ mouse or keyboard, RJ-11, RJ-45, SD Card slot, serial, TV-out (NTSC/PAL; RCA connector), 2 x USB				External monitor, RJ-11, RJ-45, 2 x USB 2.0, Fast InfraRed port (FIR), external microphone, headphone, iLINK® (IEEE 1394), parallel, PS/2™ mouse or keyboard, RJ-11, RJ-45, SD™ Card slot for one type II card, expansion bus connector, DC-in		DC-in, expansion bus connector, external microphone, external monitor, Fast Infrared Port (FIR), headphone, iLINK® (IEEE 1394), RGB, RJ-11, RJ-45, SD™ Card slot, 2 x USB		CF™ Card slot, DC-in, external microphone, Fast Infrared Port (FIR), headphone, external monitor, RJ-11, RJ-45, SD™ Card slot, 2 x USB, 2 x USB					
Expansion	2 x PC Card Type II or 1 x PC Card Type III, 2 x memory slots (1 to configure)										2 x PC Card Type II or 1 x PC Card Type III, connects to Advanced Port Replicator (optional), 2 x memory slots (1 to configure)										2 x PC Card Type II or 1 x PC Card Type III, connects to Advanced Port Replicator (optional), DW connectivity with Advanced Port Replicator, 2 x memory slots (1 to configure)		SD™ Card slot, PC Card type II slot, memory slot, connects to Slim Port Replicator (optional)		2 x PC Card Type II or 1 x PC Card Type III, CardBus, PC port expansion with Advanced Port Replicator (optional), 2 x memory slots		PC Card slot for 1 Type II card, 2 x memory slots (1 to configure)			
AC adapter	Autosensing AC adapter (100/240 V) for worldwide usage										Autosensing AC adapter (100/240 V) for worldwide usage										Autosensing AC adapter (100/240 V) for worldwide usage		Autosensing AC adapter (100/240 V) for worldwide usage		Autosensing AC adapter (100/240 V) for worldwide usage		Autosensing AC adapter (100/240 V) for worldwide usage			
Battery	Technology: lithium-ion, maximum life: up to 2.5 hours*										Technology: lithium-ion, maximum life: up to 2h 3m*, battery life with optional 2nd battery: up to 4h 1m*, special feature: Super LongLife mode		Technology: lithium-ion, maximum life: up to 2h 2m*, battery life with optional 2nd battery: up to 4h 4m*, special feature: Super LongLife mode		Technology: lithium-ion, maximum life: up to 1h 57m*, battery life with optional 2nd battery: up to 3h 39m*, special feature: Super LongLife mode		Technology: lithium-ion, maximum life: up to 2h 6m*, battery life with optional 2nd battery: up to 5h*, special feature: Super LongLife mode		Technology: lithium-ion, maximum life: up to 2.6 hours*, battery life with optional 2nd battery: up to 8.8 hours*, special feature: Super LongLife mode		Technology: lithium-ion, maximum life: up to 4h 42m*, battery life with optional 2nd battery: up to 9h 54m*, special feature: Super LongLife mode		Technology: lithium-ion, maximum life: up to 4h 36m*, special feature: Super LongLife mode							
Operating system	Windows® XP Professional (triple language choice: English, French, Dutch)										Windows® XP Professional (triple language choice: English, French, Dutch)										Windows® XP Professional (UK)		Windows® XP Professional (UK)		Windows® XP Professional (UK)		Windows® XP Tablet PC Edition (UK)			
Bundled software	On-line user manual, Toshiba utilities and drivers, WinDVD™				Drag'n Drop CD, on-line user manual, Toshiba utilities and drivers, WinDVD™				Bluetooth™ Service Center, on-line user's and modem manual, SPANworks® 2000, Toshiba Management Console, Toshiba utilities and drivers, WinDVD™ 2000				Bluetooth™ Service Center, Drag 'n' Drop CD, on-line user's and modem manual, SPANworks® 2000, Toshiba Management Console, Toshiba utilities and drivers, WinDVD™ 2000				Bluetooth™ Easy Connect utility, Bluetooth™ Service Center, on-line user's and modem manual, SPANworks® 2000, Toshiba Client Manager, Toshiba Hibernation Utility, Toshiba Management Console, Toshiba utilities and drivers, WinDVD™ 2000		Toshiba utilities and drivers, on-line user's and modem manual, SPANworks® 2000, Toshiba Management Console, Toshiba Client Manager		Bluetooth™ Easy Connect utility, Bluetooth™ Service Center, on-line user's and modem manual, SPANworks® 2000, Toshiba Management Console, Toshiba utilities and drivers, WinDVD™ 2000		On-line user manual, Toshiba Management Console, Toshiba utilities and drivers							
Bundled hardware	AC adapter										AC adapter, external USB diskette drive, Slim SelectBay weight saver										AC adapter, Slim SelectBay weight saver		AC adapter, high-capacity second battery pack		AC adapter, Slim SelectBay weight saver		AC adapter, Tablet Pen			
Special features	BIOS password, built-in modem/LAN (by screw), HDD password on request, main hard disk (by screw), main memory (by screw), slot for Kensington Cable Lock, system password security, user password										BIOS password, HDD password on request, keyboard lock, main memory (by screw), optional fingerprint security on BIOS level, PC Card lock, SecureSleep™, set-up utilities, slot for Kensington Cable Lock, system password security, wireless LAN switch										BIOS password, HDD password on request, keyboard lock, main hard disk (by screw), main memory (by screw), optional fingerprint security on BIOS level, SecureSleep™, slot for Kensington cable lock, wireless LAN switch, system password security, optional fingerprint security on BIOS level, shock-absorbing hard disk drive bump, slot for Kensington Cable Lock, system password security, Wireless LAN switch		Main hard disk (by screw), keyboard lock, main memory (by screw), BIOS password, set-up utilities, HDD password on request, SecureSleep™, slot for Kensington cable lock, wireless LAN switch, system password security, optional fingerprint security on BIOS level, shock-absorbing hard disk drive bump, user password, built-in modem/LAN by screw		BIOS password, HDD password on request, main hard disk (by screw), main memory (by screw), optional fingerprint security on BIOS level, SecureSleep™, slot for Kensington Cable Lock, system password security, wireless LAN switch		BIOS password, HDD password on request, main hard disk (by screw), main memory (by screw), optional fingerprint security on BIOS level, SecureSleep™, slot for Kensington Cable Lock, system password security, wireless LAN switch		BIOS password, built-in modem/LAN (by screw), HDD password on request, keyboard lock, main hard disk (by screw), main memory (by screw), optional fingerprint security on BIOS level, SecureSleep™, slot for Kensington Cable Lock, supervisor password security, system password security, user password, wireless LAN switch	
Physical dimensions	W x L x H: 327.6 x 286.6 x 42.8/45.5 mm, weight: 3.4 kg										W x L x H: 330 x 289 x 34.8/37.1 mm, weight: 2.7 - 2.9 kg (14.1") or 2.9 - 3.1 kg (15.0")										W x L x H: 289 x 229 x 14.9/19.1 mm, weight: 2.2 - 2.5 kg		(W x D x H) 289 x 229 x 14.9/19.1 mm, weight 1.19 kg		W x L x H: 295 x 234 x 29.9/32.8 mm, weight: 1.7 - 1.9 kg		W x L x H: 295 x 234 x 29.9/32.8 mm, weight: 1.85 kg			
Warranty	1-year pick-up & return warranty										1-year pick-up & return warranty										3-year international warranty		3-year international warranty		3-year international warranty		3-year international warranty			
Options	128 MB memory module, 256 MB memory module, 512 MB memory module, universal AC adapter (75 W), battery pack, battery charger, Mini-PCI Wireless LAN module kit (dealer upgradeable), Bluetooth PC card, Wireless LAN Access Point, 5 GB PC Card HDD		128 MB memory module, 256 MB memory module, 512 MB memory module, universal AC adapter (75 W), battery pack, battery charger, Mini-PCI Wireless LAN module kit (dealer upgradeable), Bluetooth PC card, Wireless LAN Access Point, 5 GB PC Card HDD		128 MB memory module, 256 MB memory module, 512 MB memory module, universal AC adapter, battery charger, back-up battery pack, monitor stand, Fingerprint PC Card Reader, Mini-PCI Wireless LAN module kit (dealer upgradeable), Bluetooth™ module kit (dealer upgradeable), Bluetooth™ PC card, Wireless LAN Access Point, 5 GB PC Card HDD, USB diskette drive				128, 256 and 512 MB memory modules, universal AC adapter, battery charger, back-up battery pack, monitor stand, Fingerprint PC Card Reader, Bluetooth™ module kit (dealer upgradeable), Bluetooth™ PC Card, Wireless LAN Access Point, 5 GB PC Card HDD, USB diskette drive				128, 256 and 512 MB memory modules, universal AC adapter, battery charger, back-up battery pack, monitor stand, Fingerprint PC Card Reader, Bluetooth™ module kit (dealer upgradeable), Bluetooth™ PC Card, Wireless LAN Access Point, 5 GB PC Card HDD, USB diskette drive				256 MB memory module, universal AC adapter, battery charger, back-up battery pack, second high-capacity battery pack, Fingerprint PC Card Reader, Wireless LAN Access Point, Bluetooth™ PC Card, 2 GB PC Card HDD, mobile CD-ROM drive kit, mobile DVD-ROM drive kit, mobile CD-RW/DVD-ROM drive kit, mobile CD-RW/DVD-ROM drive kit, USB diskette drive		256 MB memory module, universal AC adapter, battery charger, back-up battery pack, second high-capacity battery pack, Fingerprint PC Card Reader, Wireless LAN Access Point, Bluetooth™ PC Card, 2 GB PC Card HDD, mobile CD-ROM drive kit, mobile DVD-ROM drive kit, mobile CD-RW/DVD-ROM drive kit, mobile CD-RW/DVD-ROM drive kit, USB diskette drive		128, 256 and 512 MB memory modules, universal AC adapter, battery charger, back-up battery pack, battery pack, monitor stand, Fingerprint PC Card Reader, Wireless LAN Access Point, 5 GB PC Card HDD, USB diskette drive		128 MB memory module, 256 MB memory module, 512 MB memory module, universal AC adapter (45 W), universal AC adapter (75 W), back-up battery pack, battery charger, USB diskette drive, tablet pen, mobile DVD-ROM drive kit							

* CPU performance may vary from specifications under certain conditions such as the use of battery instead of AC power, certain external peripherals, certain multimedia applications or network connections, complex modelling software and in areas with low air pressure at high altitude (1,000 metres above sea level) and/or certain temperatures. CPU performance may also vary from specifications due to design configuration. Under some conditions, your computer may automatically shut down as a normal protective measure. To avoid risk of lost data, please make periodic back-up copy. To purchase a new battery pack, see your accessories information that shipped with your computer or visit the Toshiba web site at computers.toshiba-europe.com.

TOSHIBA



Model	Satellite Pro M10 Centrino/1.3 GHz/14.1"/ 40 GB/256 MB/DVD-ROM/LAN/WIFI/LINK		Satellite Pro M10 Centrino/1.6 GHz/15.0"/ 60 GB/256 MB/CD-RW-DVD-ROM/LAN/WIFI/BT/LINK		Tecra S1 Centrino/1.3 GHz/14.1"/ 30 GB/256 MB/DVD-ROM/LAN/Wi-Fi		Tecra S1 Centrino/1.6 GHz/15.0"/ 40 GB/256 MB/CD-RW-DVD-ROM/LAN/Wi-Fi		Tecra M1 Centrino/1.6 GHz/14.1"/ 60 GB/512 MB/CD-RW-DVD-ROM/LAN/WIFI/LINK		Portégé R100 Centrino/ULV 900 MHz/12.1" TFT/ 40 GB/256 MB/LAN/Wi-Fi	
Technology	Intel® Centrino™ mobile technology including Intel® Pentium® M processor (1.30 GHz ¹ , 400 MHz Front Side Bus, 1 MB 2nd level cache), Intel® PRO/Wireless 2100 network connection and Intel® 855PM chipset		Intel® Centrino™ mobile technology including Intel® Pentium® M processor (1.60 GHz ¹ , 400 MHz Front Side Bus, 1 MB 2nd level cache), Intel® PRO/Wireless 2100 network connection and Intel® 855PM chipset		Intel® Centrino™ mobile technology including Intel® Pentium® M processor (1.30 GHz ¹ , 400 MHz Front Side Bus, 1 MB 2nd level cache), Intel® PRO/Wireless 2100 network connection and Intel® 855PM chipset		Intel® Centrino™ mobile technology including Intel® Pentium® M processor (1.60 GHz ¹ , 400 MHz Front Side Bus, 1 MB 2nd level cache), Intel® PRO/Wireless 2100 network connection and Intel® 855PM chipset		Intel® Centrino™ mobile technology including Intel® Pentium® M processor (1.60 GHz ¹ , 400 MHz Front Side Bus, 1 MB 2nd level cache), Intel® PRO/Wireless 2100 network connection and Intel® 855PM chipset		Intel® Centrino™ mobile technology including Ultra Low Voltage Intel® Pentium® M processor (900 MHz ¹ , 400 MHz Front Side Bus, 1 MB 2nd level cache), Intel® PRO/Wireless 2100 network connection and Intel® 855PM chipset	
Display	14.1" TFT colour display		15.0" Super Fine screen TFT colour display		14.1" TFT colour display		15.0" TFT colour display		14.1" TFT colour display		12.1" TFT polysilicon active matrix colour display	
Internal video mode	Maximum number of colours: 16.7 million, resolution: 1,024 x 768		Maximum number of colours: 16.7 million, resolution: 1,600 x 1,200		Maximum number of colours: 16.7 million, resolution: 1,024 x 768		Maximum number of colours: 16.7 million, resolution: 1,024 x 768		Maximum number of colours: 16.7 million, resolution: 1,024 x 768		Maximum number of colours: 16.7 million, resolution: 1,024 x 768	
Hard disk	40 GB ² S.M.A.R.T.		60 GB ² (5,400 rpm) S.M.A.R.T.		30 GB ² S.M.A.R.T.		40 GB ² (5,400 rpm), S.M.A.R.T.		60 GB ² (5,400 rpm) S.M.A.R.T.		20-40 GB ² , S.M.A.R.T.	
System memory	256 MB, maximum expandability: 2,048 MB, technology: DDR RAM		256 MB, maximum expandability: 2,048 MB, technology: DDR RAM		256 MB, maximum expandability: 1,024 MB, technology: DDR RAM		256 MB, maximum expandability: 1,024 MB, technology: DDR RAM		512 MB, maximum expandability: 2,048 MB, technology: DDR RAM		256 MB, maximum expandability: 1,280 MB, technology: DDR RAM	
CD-ROM, DVD-ROM, CD-RW/DVD-ROM	Slim SelectBay DVD-ROM drive, maximum speed: 8-speed DVD-ROM		Slim SelectBay CD-RW/DVD-ROM drive, maximum speed: 24-speed CD-ROM, 24-speed CD-R, 10-speed CD-RW, 8-speed DVD		Slim SelectBay DVD-ROM drive, maximum speed: 8-speed DVD-ROM		Slim SelectBay CD-RW/DVD-ROM drive, maximum speed: 24-speed CD-ROM, 24-speed CD-R, 10-speed CD-RW, 8-speed DVD		Slim SelectBay CD-RW/DVD-ROM drive, maximum speed: 24-speed CD-ROM, 24-speed CD-R, 10-speed CD-RW, 8-speed DVD		-	
Diskette drive	External USB, 3.5", 1.44 MB		-		-		-		-		-	
Graphics adapter	NVIDIA® GeForce4™ 420 Go, 32 MB DDR Video RAM, BitBit: 256 bit, 4 x AGP bus		-		ATI MOBILITY™ RADEON™ 9000, 32 MB DDR Video RAM, 4x AGP bus		-		Trident XP4m32, 32 MB DDR Video RAM, 4 x AGP bus		Trident XP4m32, 32 MB DDR Video RAM, 4 x AGP bus	
Max. external video modes	Max. colours: 16.7 million, max. refresh rate: 100 Hz, max. resolution: 2,048 x 1,536, non-interlaced resolution with max. refresh rate: 1,600 x 1,200		-		Max. colours: 16.7 million, max. refresh rate: 100 Hz, max. resolution: 2,048 x 1,536, non-interlaced resolution with max. refresh rate: 1,280 x 1,024		-		Max. colours: 16.7 million, max. refresh rate: 100 Hz, max. resolution: 2,048 x 1,536, non-interlaced resolution with max. refresh rate: 1,280 x 1,024		Max. colours: 16.7 million, max. refresh rate: 100 Hz, max. resolution: 2,048 x 1,536, non-interlaced resolution with max. refresh rate: 1,280 x 1,024	
Keyboard	86 keys, 8 cursor keys, inlaid numeric keypad, 10 Hot Keys, EURO key, Windows® keys, Toshiba console button, Toshiba Internet button, Toshiba TV button		-		86 keys, 8 cursor keys, inlaid numeric keypad, 11 Hot Keys, EURO key, Windows® keys		-		86 keys, 8 cursor keys, inlaid numeric keypad, 11 Hot Keys, EURO key, Windows® keys, Toshiba console button, Toshiba presentation button, brightness sensor		85 keys, 8 cursor keys, inlaid numeric keypad, 10 Hot Keys, EURO key, Windows® keys, Toshiba console button, presentation button	
Pointing device	Toshiba Dual Pointing Device consists of integrated AccuPoint™ II and Touch Pad		-		Toshiba Dual Pointing Device consists of integrated AccuPoint™ II and Touch Pad		-		Toshiba Dual Pointing Device consists of integrated AccuPoint™ II and Touch Pad		Touch Pad	
Wired communication	10/100 Base-TX Ethernet LAN, 56 Kbps data (V.90) and 14.4 Kbps fax (V.17) international V.90 modem		-		10/100 Base-TX Ethernet LAN, 56 Kbps data (V.90) and 14.4 Kbps fax (V.17) international V.90 modem		-		10/100/1000 Base-TX Ethernet LAN, 56 Kbps data (V.90); 14.4 Kbps fax (V.17) international V.90 modem		10/100 Base-TX Ethernet LAN, 56 Kbps data (V.90); 14.4 Kbps fax (V.17) international V.90 modem, V.92 ready	
Wireless communication	Bluetooth™ upgradeable, Wireless LAN (802.11b network support integrated, dual band (802.11a/b network support ready, Wi-Fi™ compliant), Fast InfraRed (FIR compliant)		Bluetooth™, Wireless LAN (802.11b network support integrated, dual band (802.11a/b network support ready, Wi-Fi™ compliant), Fast InfraRed (FIR compliant)		Bluetooth™ upgradeable, Wireless LAN (802.11b network support integrated, dual band (802.11a/b network support ready, Wi-Fi™ compliant), Fast InfraRed (FIR compliant)		-		Bluetooth™ upgradeable, Wireless LAN (802.11b network support integrated, dual band (802.11a/b network support ready, Wi-Fi™ compliant), Fast InfraRed (FIR compliant)		Wireless LAN (802.11b network support integrated, dual band (802.11a/b network support ready, Wi-Fi™ compliant), Fast InfraRed (FIR compliant)	
Sound system	Analogue devices, 16-bit stereo, built-in stereo speakers (Harman Kardon), built-in microphone, volume dial		-		ADI, 16-bit stereo, SoundBlaster Pro, Windows Sound System V2.0 compatible, built-in stereo speakers, built-in microphone, volume dial		-		Analogue devices, 16-bit stereo, built-in stereo speakers, built-in microphone		Analogue devices, 16-bit stereo, built-in stereo speakers, built-in microphone	
BIOS	ACPI: 1.0b, system management BIOS: 2.3		-		ACPI: 1.0b, system management BIOS: 2.3		-		ACPI: 1.0b, system management BIOS: 2.3		ACPI: 1.0b, system management BIOS: 2.3	
Interfaces	DC-in, expansion bus connector, external microphone, external monitor, Fast InfraRed (FIR), headphone, parallel (ECP), RJ-11, RJ-45, SD™ card slot, TV-out (NTSC/PAL; RCA connector), 2 x USB 2.0, i.LINK™ (IEEE 1394)		-		DC-in, expansion bus connector, external microphone, external monitor, Fast InfraRed (FIR), headphone, parallel (ECP), PS/2™ mouse or keyboard, RJ-11, RJ-45, SD™ card slot, serial, TV-out (NTSC/PAL)		-		DC-in, expansion bus connector, external microphone, external monitor, Fast InfraRed (FIR), headphone, i.LINK™ (IEEE 1394), parallel (ECP), RJ-11, RJ-45, SD™ card slot, serial, TV-out (s-video), 3 x USB 2.0		DC-in, expansion bus connector, external microphone, external monitor, headphone, RJ-11, RJ-45, SD™ card slot, 2 x USB 2.0	
Expansion	2 x PC Card Type II or 1 x PC Card Type III, connects to Advanced Port Replicator II (optional), 2 x memory slots (1 to configure)		-		2 x PC Card Type II or 1 x PC Card Type III, connects to Advanced Port Replicator II (optional), 2 x memory slots (1 to configure)		-		2 x PC Card Type II or 1 x PC Card Type III, connects to Advanced Port Replicator II (optional), 2 x memory slots (1 to configure)		1 x PC Card Type II, connects to Slim Port Replicator (optional), 1 x memory slot (1 to configure)	
AC adapter	Autosensing AC adapter (100/240 V) for worldwide usage		-		Autosensing AC adapter (100/240 V) for worldwide usage		-		Autosensing AC adapter (100/240 V) for worldwide usage		Autosensing AC adapter (100/240 V) for worldwide usage	
Battery	Technology: lithium-ion, maximum life: BWS Battery Mark: up to 6.0 hours ³ , with optional 2nd battery up to 9.7 hours ³ Mobile Mark: up to 5.8 hours ³ , with optional 2nd battery up to 9.1 hours ³		Technology: lithium-ion, maximum life: BWS Battery Mark: up to 5.3 hours ³ , with optional 2nd battery up to 8.7 hours ³ Mobile Mark: up to 5.1 hours ³ , with optional 2nd battery up to 8.2 hours ³		Technology: lithium-ion, maximum life: BWS Battery Mark: up to 5.3 hours ³ , with optional 2nd battery up to 7.8 hours ³ Mobile Mark: up to 5.4 hours ³ , with optional 2nd battery up to 8.5 hours ³		-		Technology: lithium-ion, maximum life: BWS Battery Mark: up to 6.8 hours ³ , with optional 2nd battery up to 10.9 hours ³ Mobile Mark: up to 6.2 hours ³ , with optional 2nd battery up to 10.2 hours ³		Technology: lithium-ion polymer, maximum life: BWS Battery Mark: up to 2.1 hours ³ , with bundled high-capacity 2nd battery up to 6.8 hours ³ Mobile Mark: up to 2.0 hours ³ , with optional 2nd battery up to 6.4 hours ³	
Operating system	Windows® XP Professional		-		Windows® XP Professional		-		Windows® XP Professional		Windows® XP Professional	
Bundled software	Bluetooth™ Service Center, on-line user and modem manual, Toshiba Management Console, Toshiba utilities and drivers, WinDVD™ 2000, Drag'n Drop CD, ConfigFree™, Connectivity Doctor		-		Bluetooth™ Service Center, on-line user and modem manual, Toshiba Management Console, Toshiba utilities and drivers, WinDVD™ 2000, ConfigFree™, Connectivity Doctor		Bluetooth™ Service Center, on-line user and modem manual, Toshiba Management Console, Toshiba utilities and drivers, WinDVD™ 2000, Drag'n Drop CD, ConfigFree™, Connectivity Doctor		Bluetooth™ Service Center, Drag'n Drop CD, on-line user and modem manual, Toshiba Management Console, Toshiba utilities and drivers, WinDVD™ 2000, ConfigFree™, Connectivity Doctor		On-line user and modem manual, Toshiba Management Console, Toshiba utilities and drivers, ConfigFree™, Connectivity Doctor	
Bundled hardware	AC adapter, external USB diskette drive, Slim SelectBay weight saver		-		AC adapter		-		AC adapter, Slim SelectBay weight saver		AC adapter, high capacity 2nd battery pack	
Special features	SM BIOS update, common docking and options with other Toshiba notebooks, BIOS password, HDD password on request, keyboard lock, main memory (by screw), PC Card lock, SecureSleep™, set-up utilities, slot for Kensington Cable Lock, system password security, Wireless LAN switch, Toshiba Enhanced SpeedStep		-		SM BIOS update, common docking and options with other Toshiba notebooks, BIOS password, HDD password on request, keyboard lock, main memory (by screw), PC Card lock, set-up utility, slot for Kensington Cable Lock, system password security, Wireless LAN switch, Toshiba Enhanced SpeedStep		-		SM BIOS update, common docking and options with other Toshiba notebooks, BIOS password, HDD password on request, keyboard lock, main memory (by screw), PC Card lock, set-up utilities, slot for Kensington Cable Lock, system password security, Wireless LAN switch, Toshiba Enhanced SpeedStep		SM BIOS update, BIOS password, system password security, HDD password on request, keyboard lock, main memory (by screw), shock-absorbing hard disk drive bump, slot for Kensington Cable Lock, Wireless LAN switch, Toshiba Enhanced SpeedStep	
Physical dimensions	W x L x H: 334 x 293 x 35.8/41.4 mm, weight: 2.8 kg		W x L x H: 334 x 293 x 35.8/41.4 mm, weight: 3.3 kg		W x L x H: 327 x 287 x 33.1/34.1 mm, weight: 2.9 kg		W x L x H: 327 x 287 x 33.1/34.1 mm, weight: 3.0 kg		W x L x H: 312 x 274 x 36.5/39.8 mm, weight: 2.8 kg		W x L x H: 286 x 229 x 14.9/19.8 mm, weight: 1.09 kg	
Warranty	1-year pick-up & return		-		3-year international warranty		-		3-year international warranty		3-year international warranty	
Options	128 MB memory kit, 256 MB memory kit, 512 MB memory kit, 1,024 MB memory kit, AC adapter, battery pack (6-cell), battery charger, Slim SelectBay 2nd battery pack, 30 GB HDD kit, 40 GB HDD kit, 60 GB HDD kit, 80 GB HDD kit, Slim SelectBay HDD adapter, USB diskette drive, Slim SelectBay CD-ROM drive, Slim SelectBay DVD drive, Slim SelectBay CD-RW drive, Slim SelectBay CD-RW/DVD-ROM drive, Slim SelectBay DVD Multi Drive, Toshiba StyleBay bridge media adapter, Advanced Port Replicator II, Bluetooth™ module kit		-		128 MB memory kit, 256 MB memory kit, 512 MB memory kit, universal AC adapter, battery pack (6-cell), battery pack (9-cell), Slim SelectBay 2nd battery pack, 30 GB HDD kit, 40 GB HDD kit, 60 GB HDD kit, 80 GB HDD kit, Slim SelectBay HDD adapter, USB diskette drive, Slim SelectBay CD-ROM drive, Slim SelectBay DVD drive, Slim SelectBay CD-RW drive, Slim SelectBay CD-RW/DVD-ROM drive, Slim SelectBay DVD Multi Drive, Advanced Port Replicator II		-		128 MB memory kit, 256 MB memory kit, 512 MB memory kit, 1,024 MB memory kit, universal AC adapter, battery pack (6-cell), battery pack (9-cell), Slim SelectBay 2nd battery pack, battery charger, 30 GB HDD kit, 40 GB HDD kit, 60 GB HDD kit, 80 GB HDD kit, Slim SelectBay HDD adapter, USB diskette drive, Slim SelectBay CD-ROM drive, Slim SelectBay DVD drive, Slim SelectBay CD-RW/DVD-ROM drive, Slim SelectBay DVD Multi Drive, Advanced Port Replicator II, Bluetooth™ module kit		128 MB memory kit, 256 MB memory kit, 512 MB memory kit, 1,024 MB memory kit, AC adapter, battery pack (6-cell), high capacity 2nd battery pack, battery charger, USB diskette drive, External slimline DVD-ROM drive, Slim Port Replicator	

For optimum performance, use your computer only under recommended conditions. Please read detailed restrictions in the product resource guide, visit the Toshiba web site: computers.toshiba-europe.com and/or contact Toshiba Technical Support. ¹ One GB means one billion bytes. ² Battery life may vary depending on applications, power management settings and features utilized. Recharge time varies depending on battery type and capacity.

TOSHIBA



Model	Pocket PC e330	Pocket PC e350	Pocket PC e740	Pocket PC e740 BT	Pocket PC e740 WiFi	Pocket PC e750 WiFi
Processor	Intel® PAX 250 Processor, 300 MHz ¹	Intel® PXA 255 processor, 300 MHz ²	Intel® PAX 250 Processor, 400 MHz ¹			Intel® PXA 255 processor, 400 MHz ²
Display	3.5" reflective TFT colour display	3.5" transreflective TFT colour display	3.5" reflective TFT colour display			3.8" transreflective TFT colour display
Internal video mode	Max. number of colours: 65,536, resolution: 240 x 320	Maximum number of colours: 65,536, resolution: 240 x 320	Max. number of colours: 65,536, resolution: 240 x 320			Maximum number of colours: 65,536, resolution: 240 x 320
System memory	64 MB SDRAM, 32 MB Flash ROM	64 MB SDRAM, 16 MB Flash ROM	64 MB SDRAM, 32 MB Flash ROM			64 MB SDRAM, 32 MB Flash ROM, 32 MB NAND
Graphics adapter	—	—	—			ATI IMAGEON™ 100
Pointing device	Touch screen for stylus or fingertip	Touch screen for stylus or fingertip	Touch screen for stylus or fingertip			Touch screen for stylus or fingertip
Wireless communication	InfraRed (IrDA)	InfraRed (IrDA)	InfraRed (IrDA)	Bluetooth™, InfraRed (IrDA)	Wireless LAN (802.11b network support, Wi-Fi™ compliant), InfraRed (IrDA)	Wireless LAN (802.11b network support, Wi-Fi™ compliant), InfraRed (IrDA)
Sound system	16-bit stereo, built-in speaker, microphone	16-bit stereo, built-in speaker, microphone	16-bit stereo, built-in speaker, microphone			16-bit stereo, built-in speaker, microphone
Interfaces	Built-in microphone, cradle connector, DC-in, headphone, InfraRed (IrDA), SD™ card slot (supports SD™ memory card, SD™ IO card, MultiMedia card), USB host via optional cable, USB client via cradle connection, voice recorder	Built-in microphone, built-in speaker, cradle connector, DC-in, headphone (stereo), InfraRed (IrDA), SD™ Card slot (supports SD™ memory card, SD™ IO card, MultiMedia card), USB host via optional cable, USB client via cradle connection, voice recorder	Built-in microphone, built-in speaker, cradle connector, DC-in, external microphone, headphone (stereo), InfraRed (IrDA), SD™ card slot (supports SD™ memory card, SD™ IO card, MultiMedia card), USB client via cradle connection, voice recorder, CF™ II card slot			Built-in microphone, built-in speaker, cradle connector, DC-in, external microphone, headphone (stereo), InfraRed (IrDA), SD™ card slot (supports SD™ memory card, SD™ IO card, MultiMedia card), USB client via cradle connection, voice recorder, CF™ II card slot
AC adapter	Autosensing AC adapter (100/240 V) for worldwide usage	Autosensing AC adapter (100/240 V) for worldwide usage	Autosensing AC adapter (100/240 V) for worldwide usage			Autosensing AC adapter (100/240 V) for worldwide usage
Battery	Technology: lithium-ion	Technology: lithium-ion	Technology: exchangeable advanced lithium-ion main battery, backup battery, optional high-capacity battery pack			Technology: exchangeable advanced lithium-ion main battery, backup battery, optional high-capacity battery pack
Operating system	Microsoft® Pocket PC 2002	Microsoft® Pocket PC 2002 Professional	Microsoft® Pocket PC 2002			Microsoft® Pocket PC 2002
Bundled software	Pocket Word, Pocket Excel, Pocket Internet Explorer, Pocket Outlook, Inbox, Windows Media Player 8, application launcher (Home), Back up utility, Microsoft ActiveSync 3.5, Microsoft Outlook 2000	Adobe® Acrobat Reader® for Pocket PC, application launcher (home), back-up utility, backlight management tool, calculator, Microsoft® Active Sync® 3.5, Microsoft® Outlook 2000, Pocket Excel, Pocket Internet Explorer, Inbox, Microsoft Windows® Media™ Player 8 for Pocket PC, Pocket Outlook®, Pocket Word, power management tool, Solitaire, system information tool	Pocket Word, Pocket Excel, Pocket Internet Explorer, Pocket Outlook, Inbox, Windows Media Player 8, application launcher (Home), Back up utility, Microsoft ActiveSync 3.5, Microsoft Outlook 2000			Adobe® Acrobat Reader® for Pocket PC, application launcher (home), back-up utility, backlight management tool, calculator, IA presenter, Microsoft Windows® Media™ Player 8.5 for Pocket PC, Microsoft® Active Sync® 3.5, Microsoft® Outlook 2000, Microsoft® Transcriber, MSN® Messenger, Pocket Excel, Pocket Outlook®, Pocket Word, power management tool, Solitaire, system information tool, Wireless projector utility for Pocket PC, Wireless LAN utility, Pocket Internet Explorer, Inbox
Bundled hardware	AC adapter, Quick start guide, soft case, stylus, USB cradle, user manual	AC adapter, soft case, stylus, USB cradle, Quick Start guide, user manual	AC adapter, Quick start guide, soft case, stylus, USB cradle, user manual			AC adapter, Quick start guide, soft case, stylus, USB cradle, user manual
Physical dimensions	W x L x H: 80 x 125 x 12.4 mm, weight: 147 g	W x L x H: 80 x 125 x 12.4 mm, weight: 149 g	W x L x H: 80 x 125 x 16 mm, weight: 175 g	W x L x H: 80 x 125 x 16 mm, weight: 181 g	W x L x H: 80 x 125 x 16 mm, weight: 185 g	W x L x H: 80 x 125 x 16 mm, weight: 196.5 g
Warranty	2-year warranty	2-year warranty	2-year warranty			2-year warranty
Options	Stylus pen (set of 3), AC adapter, SD™ memory card: 16 MB, 32 MB, 64 MB, 128 MB, SD™ Bluetooth™ card, USB client cable, USB cradle, USB host cable, Leather Case Pro, Leather Wallet Pro	Stylus pen (set of 3), AC adapter, SD™ memory card: 16 MB, 32 MB, 64 MB, 128 MB, SD™ Bluetooth™ card, USB client cable, USB cradle, USB host cable, Leather Case Pro, Leather Wallet Pro	Stylus pen (set of 3), high-capacity battery pack, battery pack, battery charger, AC adapter, SD™ memory card: 16 MB, 32 MB, 64 MB, 128 MB, CompactFlash™ memory card: 256 MB, 512 MB, 1 GB, SD™ Bluetooth™ card, CompactFlash™ GPRS card, USB client cable, USB host cable, Pocket PC Expansion Pack, USB cradle, Leather Case Pro, Leather Wallet Pro			Stylus pen (set of 3), high-capacity battery pack, battery pack, battery charger, AC adapter, SD™ memory card: 16 MB, 32 MB, 64 MB, 128 MB, CompactFlash™ memory card: 256 MB, 512 MB, 1 GB, SD™ Bluetooth™ card, CompactFlash™ GPRS card, USB client cable, USB cradle, Pocket PC Expansion Pack, USB host cable, Leather Case Pro, Leather Wallet Pro

depending on usage. Battery may not charge while computer is consuming full power. After a period of time, the battery will lose its ability to perform at maximum capacity and will need to be replaced. This is normal for all batteries.

**For further information on the
Toshiba range of mobile solutions contact**

your nearest **Toshiba Authorised Reseller.**

You can also visit the Toshiba web sites: **www.computers.toshiba.nl**
www.computers.toshiba.be

or call us at: **(NL) 0800-TOSHIBA**
(numeric 0800-8674422)
(BE) 00 32 (0) 2/7158700

TOSHIBA INFORMATION SYSTEMS BENELUX
Rivium Boulevard 41
2909 LK Capelle a/d IJssel
The Netherlands
Infoline: 0800-TOSHIBA (numeric 0800-8674422)
Fax: 0031 (0) 10 2882 390
Internet: www.computers.toshiba.nl

TOSHIBA INFORMATION SYSTEMS BELGIUM
Excelsiorlaan 40
1930 Zaventem
Belgium
Phone: 00 32 (0) 2/7158700
Fax: 00 32 (0) 2/7253030
Internet: www.computers.toshiba.be

TEG March 2003, Art. No. RBNB 03/03NL/BE. Microsoft and Windows are either registered trademarks or trademarks of Microsoft Corporation in the United States and/or other countries. All trademarks are acknowledged. Product design specifications and colours are subject to change without notice and may vary from those shown. Errors and omissions excepted.

Choose freedom.
www.computers.toshiba.nl | www.computers.toshiba.be

TOSHIBA