

Size : 11x14 inches
 Color : 2 color job = ■ Process Black (This plate must be printed in PMS Process Black C)
 ■ Process Magenta (This plate must be printed in PMS 032cvc)
 Font : IBM Fonts and Helvetica Neue Family
 Material : 105 gsm gloss art paper
 Blue line shows die-cut. DO NOT PRINT.
 Please change the barcode No.
 Please change the country name if the poster is printed in other than China.

ThinkPad®



Unpack

- ThinkPad® notebook
- Battery pack
- Power cord
- AC adapter
- 2 TrackPoint® caps
- Manuals
 - Setup Instructions (this sheet)
 - Safety and Warranty Guide
 - Service and Troubleshooting Guide
 - Other supplements or flyers

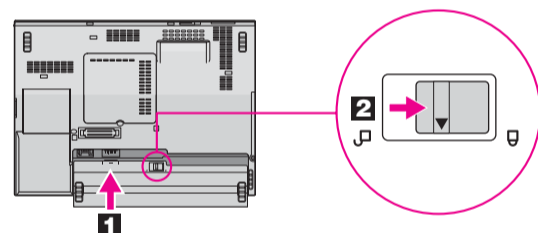
See reverse for notes about unlisted, missing, or damaged items and a recovery disc.

Initial Setup Instructions

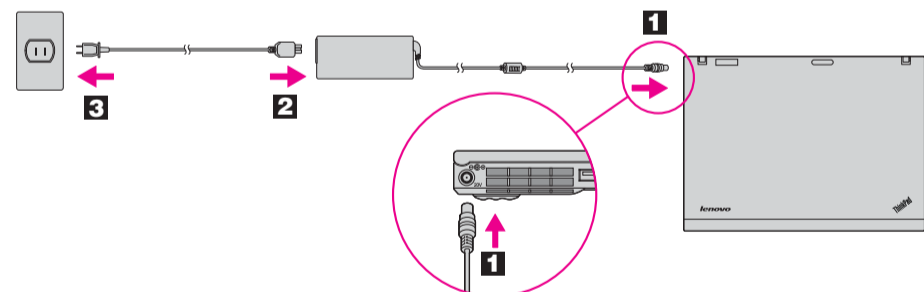


Read the safety notices and important tips in the included manuals before using your computer.

- 1 Install battery pack:**
Your battery is ready to use.



- 2 Connect to power:**



- 3 Turn on the power:**



- 4 Point and click with TrackPoint Navigation System:**
Press the TrackPoint cap in the direction you want to move the pointer. The left and right buttons below the space bar function like mouse buttons.

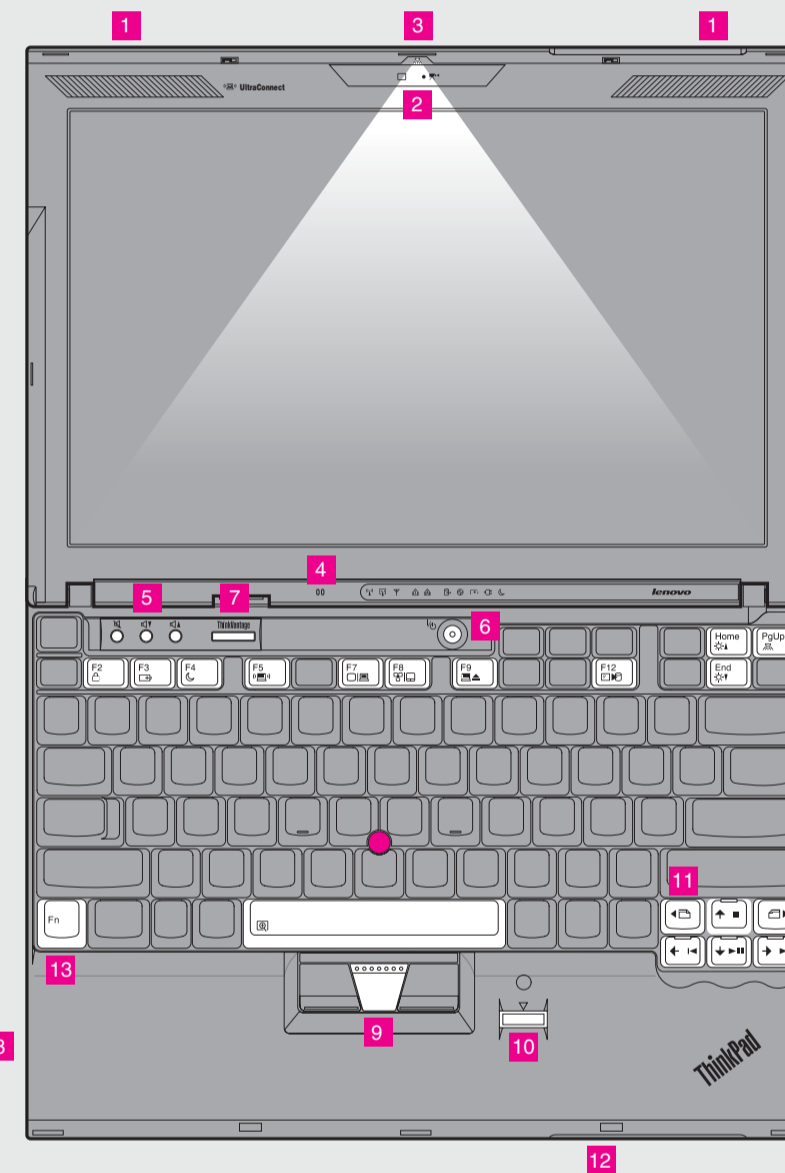
- 5 Configure the Operating System following on-screen instructions:**
This process takes several minutes.

- 6 For more detailed information, press the ThinkVantage® button:**



ThinkVantage® Design

- 1 UltraConnect™ wireless antennas (main and auxiliary)**
- 2 Integrated camera***
*Select models only.
- 3 ThinkLight® keyboard light**
- 4 Built-in microphone**
- 5 Volume and mute buttons**
- 6 Power button**
- 7 ThinkVantage button**
- 8 Wireless radio switch**
- 9 TrackPoint center button**
- 10 Fingerprint reader**
*Select models only.
- 11 Web browser back and forward**
- 12 One-handed latch**
- 13 Fn key**
Use in combination with other keys to access special ThinkPad features.



- | | | | |
|--|------------------------------|--|---------------------------|
| | Lock your computer | | Enter hibernation |
| | Manage battery & power | | ThinkLight on/off |
| | Enter sleep (standby) | | Multimedia controls |
| | Manage wireless connections | | Change display brightness |
| | Change display settings | | Change display brightness |
| | Change input device settings | | Magnify screen contents |
| | Manage external devices | | |

X200 Setup Poster

P/N 43Y6435

05/13/2008

Size : 11x14 inches

Color : 2 color job = ■ Process Black (This plate must be printed in PMS Process Black C)

■ Process Magenta (This plate must be printed in PMS 032cvc)

Font : IBM Fonts and Helvetica Neue Family

Material : 105 gsm gloss art paper

Blue line shows die-cut. DO NOT PRINT.

Please change the barcode No.

Please change the country name if the poster is printed in other than China.

Thank you for choosing a ThinkPad notebook.

The ThinkPad notebook raises the standard for ultraportability.



Thin and light ultraportable

Your computer is a powerful 12.1-inch widescreen ultraportable that enables you to work productively wherever you want to be. It is housed in a solid and durable magnesium frame to withstand the everyday rigors of the road warrior.

The UltraBase™ option enhances the portability and expandability of your computer.



Full-size keyboard

Your ultraportable computer features the same excellent full-size keyboard found on larger, mainstream ThinkPad notebooks, so that typing is easy.



Multimedia features

Your computer includes an integrated camera*, a digital microphone, and a 5-in-1 media card reader or a Secure Digital card slot to maximize your life on the go.

To learn more about hardware features, see About your computer in Access Help.



Power-saving design

The energy-efficient design of your computer enables longer continuous operation on battery power. Energy-saving features such as sophisticated power management give you the best balance between performance and power saving. Your computer meets ENERGY STAR 4.0 standard and the Climate Savers efficiency standards.

To learn more about extending battery life, see Learn how to achieve all day computing in Access Help.



Diverse connectivity options

Your computer provides you with advanced connectivity options, such as Gigabit Ethernet, Wireless LAN, Wireless USB*, Bluetooth*, WiMAX*, and Wireless WAN*.



To learn more about network connections, see Getting connected in Access Help.

*Select models only.

ThinkVantageTechnologies

ThinkVantage Technologies are advanced technologies that enable you to improve productivity, protect your data, and reduce overall lifecycle costs.

To learn more about ThinkVantage technologies, open the ThinkVantage Productivity Center by pressing the ThinkVantage button.



Using Access Help (online manual) and the included manuals

To find detailed information about your computer, open Access Help, or see the Safety and Warranty Guide or the Service and Troubleshooting Guide.



Access Help

Access Help is a comprehensive online manual that provides answers to most of your questions about your computer, helps you to configure preinstalled features and tools, or solve problems.

To open Access Help, do either of the following:

- Press the ThinkVantage button. Under Quick Links in the ThinkVantage Productivity Center, click "Access on-system help."
- Click Start, move the pointer to All Programs; then to ThinkVantage. Click Access Help.



Safety and Warranty Guide

- Important safety information
- Operating environment and other important notices
- Warranty information



Service and Troubleshooting Guide

- Introduction to other sources of information
- Important tips for taking care of your computer
- Diagnostics and troubleshooting
- Recovery options
- Help and service
- Warranty information for your computer

* Additional unpacking notes:

- 1) Some models may contain items that are not listed.
- 2) If any item is missing or damaged, please contact your place of purchase.
- 3) Everything for recovering factory-installed files and applications is on your hard disk eliminating the need for a recovery disc. For more information, see "Recovery options" in the Service and Troubleshooting Guide.

© Copyright Lenovo 2008.
All rights reserved.

The following terms are trademarks of Lenovo in the United States, other countries, or both:

Lenovo
ThinkLight
ThinkPad
ThinkVantage

TrackPoint
UltraBase
UltraConnect

Other company, product, or service names may be trademarks or service marks of others.

Printed in China

For Barcode Position Only