

CleanView® Deluxe

Corded Hand Vacuum

USER'S GUIDE
47R5 SERIES



3 Safety Instructions

4 Product View

4 Assembly

4-5 Operations

6 Maintenance and Care

6-7 Troubleshooting

7 Consumer Services

7 Replacement Parts

8 Warranty



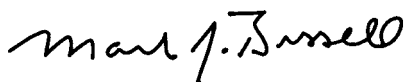
Thanks for buying a BISSELL Vacuum

We're glad you purchased a BISSELL CleanView Deluxe corded hand vacuum. Everything we know about floor care went into the design and construction of this complete, high-tech home cleaning system.

Your BISSELL hand vacuum is well made, and we back it with a limited one year warranty. We also stand behind it with a knowledgeable, dedicated Consumer Services department, so, should you ever have a problem, you'll receive fast, considerate assistance.

My great-grandfather invented the floor sweeper in 1876. Today, BISSELL is a global leader in the design, manufacture, and service of high quality homecare products like your BISSELL hand vacuum .

Thanks again, from all of us at BISSELL.



Mark J. Bissell

Chairman, President & CEO

IMPORTANT SAFETY INSTRUCTIONS

When using an electrical appliance, basic precautions should be observed, including the following:

READ ALL INSTRUCTIONS BEFORE USING YOUR HAND VACUUM.

Always connect to a polarized outlet (left slot is wider than right). Unplug from outlet when not in use and before conducting maintenance.

WARNING: To reduce the risk of fire, electric shock, or injury:

- Do not modify the polarized plug to fit a non-polarized outlet or extension cord.
- Do not leave hand vacuum cleaner unattended when it is plugged in.
- Unplug from outlet when not in use and before servicing.
- Unplug before attaching the nozzles.
- Do not use outdoors or on wet surfaces.
- Do not allow children to operate vacuum cleaner or use as a toy.
- Close attention is necessary when used by or near children.
- Do not use for any purpose other than described in this user's guide.
- Use only manufacturer's recommended attachments.
- Do not use with damaged cord or plug.
- If appliance is not working as it should, has been dropped, damaged, left outdoors, or dropped into water, have it repaired at an authorized service center.
- Do not pull or carry by cord, use cord as a handle, close a door on cord, or pull cord around sharp edges or corners. Do not run appliance over cord. Keep cord away from heated surfaces.
- Do not unplug by pulling on cord. To unplug, grasp the plug, not the cord.
- Do not handle hand vacuum cleaner or plug with wet hands.
- Do not put any object into openings. Do not use with any opening blocked; keep openings free of dust, lint, hair, and anything that may reduce air flow.
- Keep hair, loose clothing, fingers, and all parts of body away from openings and moving parts.

- Turn off all controls before plugging or unplugging vacuum cleaner.
- Use extra care when cleaning stairs.
- Do not pick up flammable materials (lighter fluid, gasoline, kerosene, etc.) or use in the presence of explosive liquids or vapors.
- Do not pick up toxic material (chlorine bleach, ammonia, drain cleaner, etc.).
- Do not use hand vacuum cleaner in an enclosed space filled with vapors given off by oil base paint, paint thinner, some moth proofing substances, flammable dust, or other explosive or toxic vapors.
- Do not pick up hard or sharp objects such as glass, nails, screws, coins, etc.
- Do not pick up anything that is burning or smoking, such as cigarettes, matches, or hot ashes.
- Do not use without filters in place.
- Use only on dry, indoor surfaces.
- Keep appliance on a level surface.

SAVE THESE INSTRUCTIONS FOR FUTURE USE

THIS APPLIANCE HAS A POLARIZED PLUG.

To reduce the risk of electric shock, this appliance has a polarized plug (one blade is wider than the other). This plug will fit in a polarized outlet only one way. If the plug does not fit fully in the outlet, reverse the plug. If it still does not fit, contact a qualified electrician to install a proper outlet. Do not change the plug in any way.

This model is for household use only.

Product view



HEPA Media Filter Assembly



Flex Hose



Crevice Tool



Flexible Rubber Contour Nozzle



Wide Mouth Tool



Hose Adapter Nozzle

Operations

Power switch

The power switch is located on the end of the curved handle.

To turn hand vacuum ON (I), press up.

To turn hand vacuum OFF (O), press down.

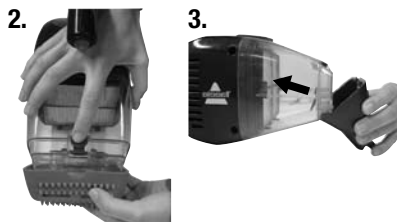
Operations

Cleaning with flexible rubber contour nozzle

The CleanView Deluxe comes with the rubber contour nozzle already attached. This attachment is great for vacuuming up pet hair, stair cleaning, upholstery, and many other uses.

Cleaning with hose attachment and tools

1. Turn hand vacuum OFF (O).
2. Remove flexible rubber nozzle by pressing down on round nozzle release button.
3. Replace with hose adapter nozzle by lining up the bottom of nozzle to the bottom of the dirt container. Pivot upwards to snap into place.
4. Make sure the nozzle has snapped securely into place before using.
5. Attach the flexible hose to the hose adapter nozzle. Choose the tool appropriate for your cleaning job and attach to the end of the hose.



Emptying the dirt container

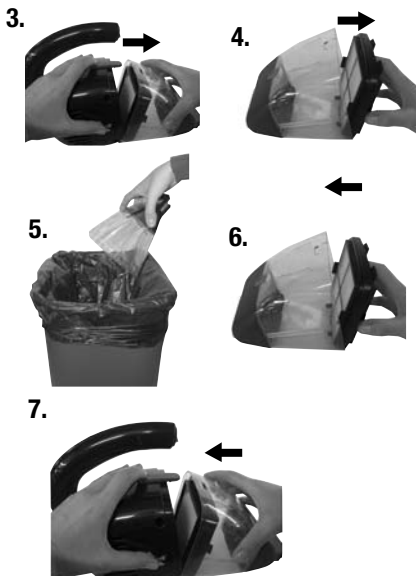
Empty the dirt container after each use. A full dirt container may reduce suction or performance of vacuum.

1. Turn hand vacuum OFF (O).
2. Unplug hand vacuum from electrical outlet.
3. Press dirt container release latch down to disconnect dirt container and filter assembly from the unit.
4. Remove filter by grasping tabs on both sides of filter frame and pulling away from the dirt container. For best results, periodically tap filter assembly against trash can to remove dirt that has collected on the screen and filter.
5. Empty dirt into trash can.
6. Replace filter assembly by aligning side labeled "TOP" into top of dirt container. Grasp filter tabs and press firmly to ensure filter assembly is secure in dirt container.

NOTE: Make sure side of filter assembly labeled "TOP" faces outward when inserting filter assembly into dirt container.

7. Reattach dirt container to unit by aligning bottom of dirt container to bottom of unit. Pivot upwards and snap into place. Use one hand to hold the unit and use the other hand to clip the dirt container securely in place.

⚠ ATTENTION:
For best performance, dirt container and filter assembly should be cleaned after every use.



Maintenance and care

Cleaning the filter and screen

1. Turn hand vacuum OFF (O).
2. Unplug hand vacuum from electrical outlet.
3. Press dirt container release latch down to disconnect dirt container and filter assembly from the unit.
4. Remove filter by grasping tabs on both sides of filter frame and pulling away from the dirt container.
5. Separate filter assembly by grasping tabs on both sides of assembly and pull. For best results, periodically tap filter and screen against trash can to remove dirt that has collected on the screen and filter.
6. Reconnect filter and screen by aligning rectangular tab on filter with insert on screen. Press together to ensure assembly is secure.
7. See page 5 to reattach dirt container.

**NOTE: Dirt container and screen may be rinsed with cold water. Ensure both are dry before reinserting.
Do not wash or rinse pleated filter.**

Storage/Cord wrap system

A wrap is always attached to the cord for quick and easy storage.

1. To store the unit, turn hand vacuum OFF (O).
2. Unplug hand vacuum from electrical outlet.
3. Bundle cord, using wrap that is located on cord, to store.

Nozzle and tools Maintenance

Keep nozzle and tools clean and free of debris by wiping nozzle and tools clean with damp cloth.

Troubleshooting

Hand vacuum won't turn on

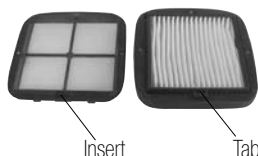
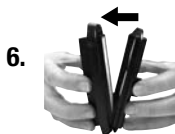
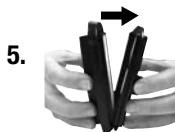
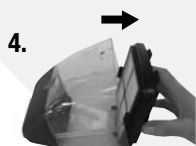
Possible causes

1. Power cord not plugged in
2. Blown fuse/tripped breaker in home

Hand Vacuum won't pick up or low suction

Possible causes

1. Dirt container not installed properly
2. Dirt container is full
3. Filter or screen is dirty
4. Nozzle or hose is clogged with debris



WARNING:

To reduce the risk of electric shock, turn power OFF and disconnect polarized plug from electrical outlet before performing maintenance or troubleshooting.

Remedies

1. Check electrical plug
2. Check/replace fuse or reset breaker

Remedies

1. Check assembly of dirt container making sure it is securely in place
2. Empty dirt container and reattach
3. See instructions above. Replace filter if needed
4. Remove hose and tool and remove debris

Troubleshooting

Other maintenance or service not included in the manual should be performed by an authorized service representative.

Thank you for selecting a BISSELL product.

Please do not return this product to the store.

**For any questions or concerns, please
contact BISSELL Consumer Services at 1-800-237-7691.**

BISSELL Consumer Services

For information about repairs or replacement parts, or questions about your warranty, call:

**BISSELL Consumer Services
1-800-237-7691**

Monday - Friday 8 a.m. — 10 p.m. ET

Saturday 9 a.m. — 8 p.m. ET

Or write:

BISSELL Homecare, Inc.

PO Box 3606

Grand Rapids MI 49501

ATTN: Consumer Services

Or visit the BISSELL website - **www.bissell.com**

When contacting BISSELL, have model number of cleaner available.

Please record your Model Number: _____

Please record your Purchase Date: _____

NOTE: Please keep your original sales receipt. It provides proof of purchase date in the event of a warranty claim. See Warranty on page 8 for details.

Replacement parts - BISSELL vacuum

Item	Part No.	Part Name
1	97D5	HEPA Media Filter Assembly
2	203-1454	Flexible Rubber Contour Nozzle
3	203-1458	Flex Hose
4	203-1456	Crevise Tool
5	203-1455	Wide Mouth Tool
6	203-1457	Hose Adapter Nozzle

1



2



3



4



5



6



Warranty - BISSELL CleanView® Deluxe Corded Hand Vacuum

This warranty gives you specific legal rights, and you may also have other rights which may vary from state to state. If you need additional instruction regarding this warranty or have questions regarding what it may cover, please contact BISSELL Consumer Services by E-mail, telephone, or regular mail as described below.

Limited One Year Warranty

Subject to the ***EXCEPTIONS AND EXCLUSIONS** identified below, upon receipt of the product BISSELL Homecare, Inc. will repair or replace (with new or remanufactured components or products), at BISSELL's option, free of charge from the date of purchase by the original purchaser, for one year any defective or malfunctioning part.

See information below on "If your BISSELL product should require service".

This warranty applies to product used for personal, and not commercial or rental service. This warranty does not apply to fans or routine maintenance components such as filters, belts, or brushes. Damage or malfunction caused by negligence, abuse, neglect, unauthorized repair, or any other use not in accordance with the User's Guide is not covered.

If your BISSELL product should require service:

Contact BISSELL Consumer Services to locate a BISSELL Authorized Service Center in your area.

If you need information about repairs or replacement parts, or if you have questions about your warranty, contact BISSELL Consumer Services.

Website or E-mail:

www.bissell.com

Use the "Customer Services" tab.

Or Call:

BISSELL Consumer Services

1-800-237-7691

Monday - Friday 8 a.m. - 10 p.m. ET

Saturday 9 a.m. - 8 p.m. ET

Or Write:

BISSELL Homecare, Inc.

PO Box 3606

Grand Rapids, MI 49501

ATTN: Consumer Services

BISSELL HOMECARE, INC. IS NOT LIABLE FOR INCIDENTAL OR CONSEQUENTIAL DAMAGES OF ANY NATURE ASSOCIATED WITH THE USE OF THIS PRODUCT. BISSELL'S LIABILITY WILL NOT EXCEED THE PURCHASE PRICE OF THE PRODUCT.

Some states do not allow the exclusion or limitation of incidental or consequential damages, so the above limitation or exclusion may not apply to you.

*EXCEPTIONS AND EXCLUSIONS FROM THE TERMS OF THE LIMITED WARRANTY

THIS WARRANTY IS EXCLUSIVE AND IN LIEU OF ANY OTHER WARRANTIES EITHER ORAL OR WRITTEN. ANY IMPLIED WARRANTIES WHICH MAY ARISE BY OPERATION OF LAW, INCLUDING THE IMPLIED WARRANTIES OF MERCHANTABILITY AND FITNESS FOR A PARTICULAR PURPOSE, ARE LIMITED TO THE ONE YEAR DURATION FROM THE DATE OF PURCHASE AS DESCRIBED ABOVE.

Some states do not allow limitations on how long an implied warranty last so the above limitation may not apply to you.



©2009 BISSELL Homecare, Inc.
Grand Rapids, Michigan
All rights reserved. Printed in China
Part Number 110-4109
Rev 4/09
Visit our website at:
www.bissell.com

