



by **Schneider** Electric

# INSTALLATION

## **DX8100 Series Hybrid Video Recorders**



**Hard Disk Drive**

**C2639M-B (8/09)**



# Contents

---

Important Safety Instructions . . . . .	5
Description . . . . .	6
Parts List and Tools. . . . .	6
Installing a Hard Disk Drive . . . . .	7
Opening the Chassis. . . . .	8
Interior Component Layout. . . . .	9
Removing a Drive . . . . .	10
Installing a Drive . . . . .	12
Setting Up the System Drive . . . . .	13
Partitioning the System Drive . . . . .	13
Installing Windows and DX8100 Application Software . . . . .	16
Setting Up the System Data Partition . . . . .	18
Optional: Configuring the Data Drive. . . . .	20
Configuring a Hard Drive . . . . .	21
Converting a Dynamic Disk to a Basic Disk . . . . .	23
Partitioning the Data Disk . . . . .	24
Reinstalling the DX8100. . . . .	25
Allocating a Drive . . . . .	26
Allocating a System and Data Drive Simultaneously . . . . .	26
Allocating a New Video Data Drive . . . . .	28

# List of Illustrations

---

1	Removing Chassis Cover	8
2	DX8100 Interior	9
3	Removing SATA Power and Data Cables	10
4	Removing a System Disk Mounting Basket	11
5	Lifting System Disk Mounting Basket	11
6	DX8100 BIOS Setup Utility Main Page	13
7	DX8100 Boot Settings View	14
8	DX8100 Boot Device Priority View	15
9	Partition Size Verification Dialog Box	16
10	DX8100 Recovery Dialog Box	17
11	Disk Management Dialog Box	18
12	Formatting the System Drive Data Partition	18
13	Format E Dialog Box	19
14	Formatted Volume Status	19
15	Configuring the Data Drive	20
16	Format Partition Dialog Box	20
17	Formatted Data Drive	21
18	New Data Disk Not Shown	21
19	Initialize and Convert Disk Wizard	22
20	Select Disks to Initialize Dialog	22
21	Select Disks to Convert Dialog	23
22	Data Disk Status Changed to Dynamic	23
23	Shortcut Menu	23
24	Partitioning the Data Disk	24
25	Format Partition Dialog Box	24
26	Expanding the PDB IG Group Box	26
27	Selecting the System Data Partition for Allocated	26
28	Configuring HDDs for Allocation	27
29	Format Warning Dialog Box	27
30	Opening List of Drives	28
31	Viewing the Unallocated Drive	28
32	Selecting the Allocation Option	29
33	Format Warning Dialog Box	29

# Important Safety Instructions

The system and data hard disk drives (HDD) for the DX8100 Series are installed inside the DX8100 chassis. The DX8100 must be taken offline and shut down before starting the upgrade process. Before continuing with the HDD upgrade procedure, read these safety instructions.

1. Read the *Important Safety Instructions* that came with the DX8100. You can access this document on the Pelco Web site at [www.Pelco.com](http://www.Pelco.com), and navigate to Products/Video Recording Solutions/Hybrid Video Recorders/Hybrid Video Recorders/DX8100 Series Hybrid Video Recorders Version 2.0/Documents.
2. The security surveillance service provided by the DX8100 is interrupted when it is taken offline.
3. The unit must be shut down to install the system and data disk.
4. Unplug the power cord from the wall socket, and then unplug it from the rear of the HVR/DVR.



**WARNING:** It is critical that the DX8100 be unplugged for your safety. You must remove the power cord because current continues to flow through the unit even when it is off.

5. Only use attachments/accessories specified by the manufacturer.
6. Make sure you protect the unit and its components from electrostatic discharge (ESD).
7. The currently installed data drive might contain recorded data. In this case, if required to remove a data drive, label the drive to ensure that the drive is reinstalled in the same location.

The product and/or manual may bear the following marks:



This symbol indicates that dangerous voltage constituting a risk of electric shock is present within this unit.



This symbol indicates that there are important operating and maintenance instructions in the literature accompanying this unit.

## CAUTION:

RISK OF ELECTRIC SHOCK.  
DO NOT OPEN.



**WARNING:** This product is sensitive to Electrostatic Discharge (ESD). To avoid ESD damage to this product, use ESD safe practices during installation. Before touching, adjusting or handling this product, correctly attach an ESD wrist strap to your wrist and appropriately discharge your body and tools. For more information about ESD control and safe handling practices of electronics, please refer to ANSI/ESD S20.20-1999 or contact the Electrostatic Discharge Association ([www.esda.org](http://www.esda.org)).

 The materials used in the manufacture of this document and its components are compliant to the requirements of Directive 2002/95/EC.



This equipment contains electrical or electronic components that must be recycled properly to comply with Directive 2002/96/EC of the European Union regarding the disposal of waste electrical and electronic equipment (WEEE). Contact your local dealer for procedures for recycling this equipment.

# Description

---

This manual describes how to replace, upgrade, or install a new hard disk drive (HDD) in the DX8100 Series hybrid/digital video recorder (HVR/DVR). Before you install the hard drive, familiarize yourself with the instructions in this manual.

## NOTES:

- This document describes how to install a new unformatted HDD. Using this procedure for other scenarios might result in data loss.
- Installing an internal HDD storage device other than a device obtained from Pelco will immediately void the warranty on the DX8100 HVR/DVR.

The DX8100 allows you to install one system drive (required) and up to three data HDDs. The system drive installation process allocates 15 GB for installing the system software. System software includes the Windows operating system and the DX8100 Series application software. The remaining storage capacity on the system drive can be configured to store video data. The DX8100 supports up to three data drives for storing video data.

## PARTS LIST AND TOOLS

Qty	Description
1	CD-DX81PD disc for partitioning the system HDD
1	DX8100 Recovery disc for installing the operating system software on the system HDD
1	SATA disk
1	SATA data cable for connecting SATA drive to the unit's motherboard
1	Grounding wrist strap for protecting the unit and its hard drive components against ESD
2	Screws for securing the drive to the mounting basket
1	HDD installation manual

To install the HDD, you will also need a nonmagnetic Phillips screwdriver #1, a properly grounded ESD wrist strap and mat, and four small containers (optional) to store screws.

# Installing a Hard Disk Drive

---

## NOTES:

- The security surveillance service provided by the DX8100 is interrupted when the unit is taken offline.
- A DX8100 can weigh between 39.8 lb (18.1 kg) to 46.4 lb (21.1 kg). It is recommended that two people lift and remove the unit.
  1. Properly shut down the DX8100 Series HVR/DVR. Refer to the manuals supplied with the unit. DX8100.
  2. Unplug the power cord from the wall socket.



**WARNING:** It is critical that the unit be unplugged for your safety. You must remove the power cord because current continues to flow through the DX8100 even when the unit is turned off. First, unplug the power cord from the wall socket and then unplug it from the rear of the HVR/DVR.

3. Remove the power cord from the back of the DX8100.
4. Disconnect any cables or connections that may restrict access or interfere with the removal of the unit.
5. If the DX8100 is mounted in a rack, remove it from the rack before installing an HDD. Two people can lift and remove the HVR/DVR.

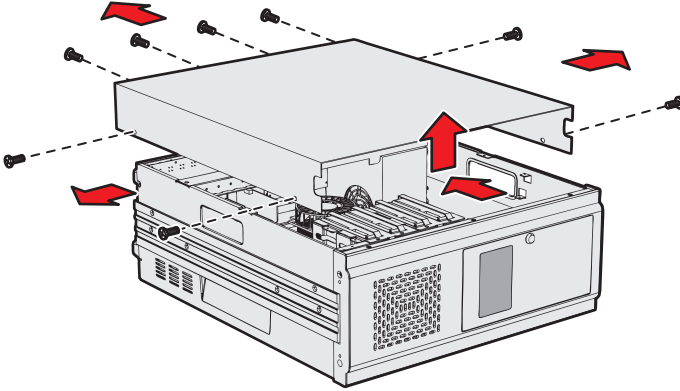


**WARNING:** The chassis assembly includes parts with sharp edges. To avoid injury, use caution when working in and around the chassis and components.

- a. Unscrew the fasteners that secure the unit in the rack and carefully lift it out of the rack.
- b. Move the DX8100 to an area that will provide full access to its internal components.

## OPENING THE CHASSIS

1. Make sure you protect the unit and its components, which are susceptible to damage from improper handling and ESD. Refer to the Safe Handling of Hard Drives document for more information.
2. Using a Phillips screwdriver, remove the chassis cover (refer to Figure 1):
  - a. Remove the top two screws on the left and right side panels of the DX8100.
  - b. Remove the four screws on the back of the unit that fasten the cover to the unit.
  - c. Carefully remove the chassis cover by sliding it back and up. Set aside the cover.



**Figure 1.** Removing Chassis Cover



# INTERIOR COMPONENT LAYOUT

Refer to Figure 2 for information about the DX8100 layout of major components. (Slots on the motherboard are labeled differently.)

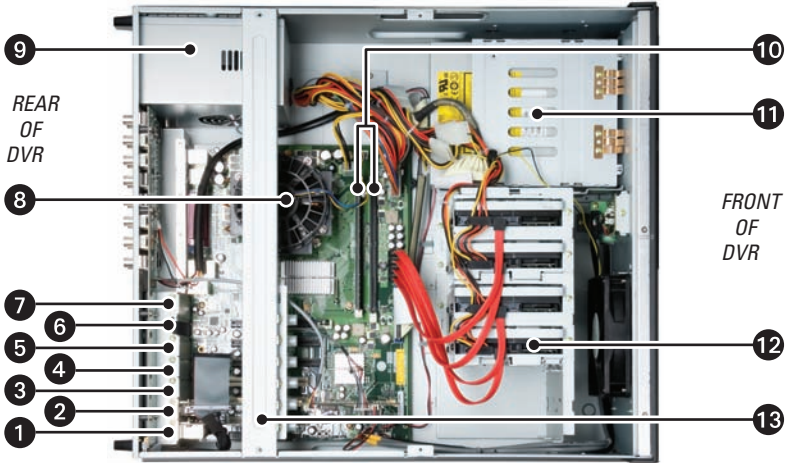


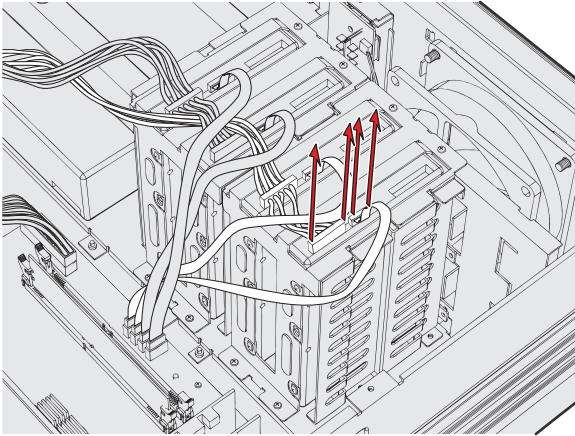
Figure 2. DX8100 Interior

- 1 Slot 1: PTZ card installed in PCI connector
- 2 Slot 2: Capture Card installed in PCI connector
- 3 Slot 3: PCI connector
- 4 Slot 4: x1 PCI Express connectors
- 5 Slot 5: x1 PCI Express connectors
- 6 Slot 6: x16 PCI Express connector
- 7 Slot 7: Optional Expansion Unit I/O card
- 8 CPU
- 9 Power Supply
- 10 DIMM Sockets (RAM)
- 11 DVD-RW
- 12 System Disk and Data Disk Mounting Baskets: There are two mounting basket. Each one holds two drives. The system drive and one data drive are mounted in the system disk mounting basket. Two data drives can be installed in the data disk mounting basket.
- 13 Rear Cross-Brace

## REMOVING A DRIVE

**NOTE:** When disconnecting the data and power cables, be sure to pull straight up on the connectors. Do not move the connectors back and forth or remove a connector by pulling it out by its wires.

1. Disconnect the SATA power connector and data cable (refer to Figure 3):
  - a. Grasp the top of each end of the SATA power connector and carefully and simultaneously pull straight up on the connector.
  - b. Grasp the top of each end of the SATA data connector and carefully and simultaneously pull straight up on the connector.
2. If a data drive is installed in the system drive basket, disconnect the SATA power and data cable.

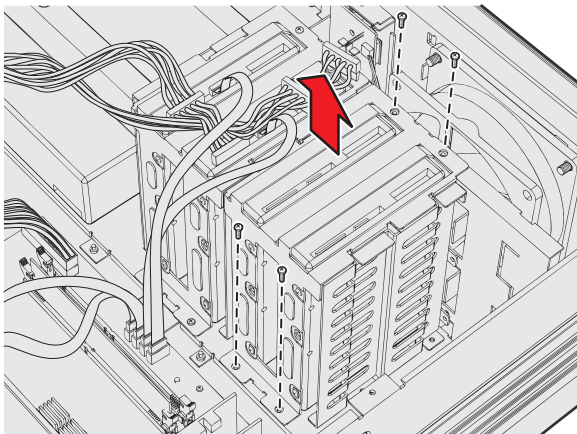


**Figure 3.** Removing SATA Power and Data Cables

3. To remove a mounting basket:

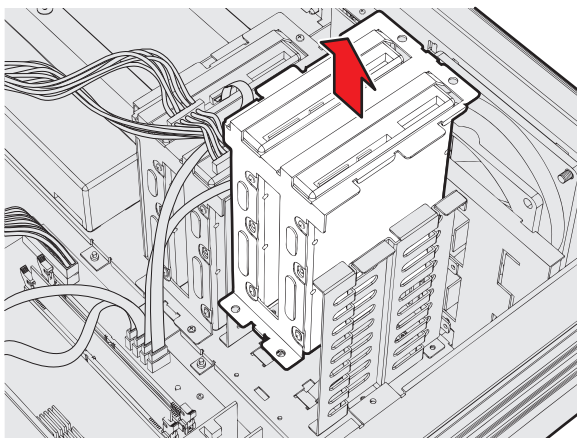
**NOTE:** It is recommended that you do not remove previously installed drives. If you must remove a drive for any reason, be sure to note the locations of the drives within the drive basket. It is critical that you return the drives to their original locations in the DX8100.

- a. Using a Phillips screwdriver, unscrew the four screws that secure the drive mounting basket to the chassis. Refer to Figure 4.



**Figure 4.** Removing a System Disk Mounting Basket

- b. Gently lift the basket up and out. Be careful not to force the basket free or to disturb other components inside the unit. Refer to Figure 5.



**Figure 5.** Lifting System Disk Mounting Basket

4. Remove the system and data drive (if applicable) from the basket:
  - a. Using a Phillips screwdriver, unscrew the screws that secure the drive to the basket.
  - b. Lift the drive out of the basket.

## INSTALLING A DRIVE

1. Place the drive in the basket:
  - a. Position the drive in the basket.
  - b. Using a Phillips screwdriver, reinstall the screws to secure the drive to the basket.
  - c. Repeat steps 1a and 1b for each HDD.
2. Reinstall the basket:
  - a. Carefully and gently lower the basket into place.
  - b. Using a Phillips screwdriver, fasten the four screws that secure the drive basket to the chassis.
  - c. Repeat steps 2a and 2b for each basket.
3. Reconnect the cables:
  - a. Carefully reconnect the SATA data connector.
  - b. Carefully reconnect SATA power connect.
  - c. Repeat steps 3a and 3b to reconnect the cables for each HDD.
4. Set up the hard drive:
  - **System drive:** Refer to *Setting Up the System Drive* on page 13.
  - **Data drive:** Refer to *Setting Up a Video Data Drive* on page 21.

**NOTE:** Do not reinstall the cover at this time. You may need to access an HDD before you complete all drive partition formatting procedures.

# Setting Up the System Drive

## PARTITIONING THE SYSTEM DRIVE

The system drive must be partitioned before you can install the system software. The partition process allocates 15 GB for installing the Windows operating system and DX8100 application software. The remaining capacity is allocated for storing video data.

**NOTE:** If you are replacing or upgrading the system drive and the data drive at the same time, the Windows and DX8100 application software procedure only applies to the system drive. No software is installed on the data drive.

1. Insert the CD-DX81Partition disc in the DX8100 CD/DVD drive.
2. Start the DX8100.
3. Enter the BIOS by pressing the Delete key when the Pelco splash screen is displayed (refer to Figure 6). The BIOS SETUP UTILITY dialog appears.

**NOTE:** If you receive a prompt requesting that you enter a password, contact your system administrator for assistance with logging into and changing the DX8100 BIOS Setup.

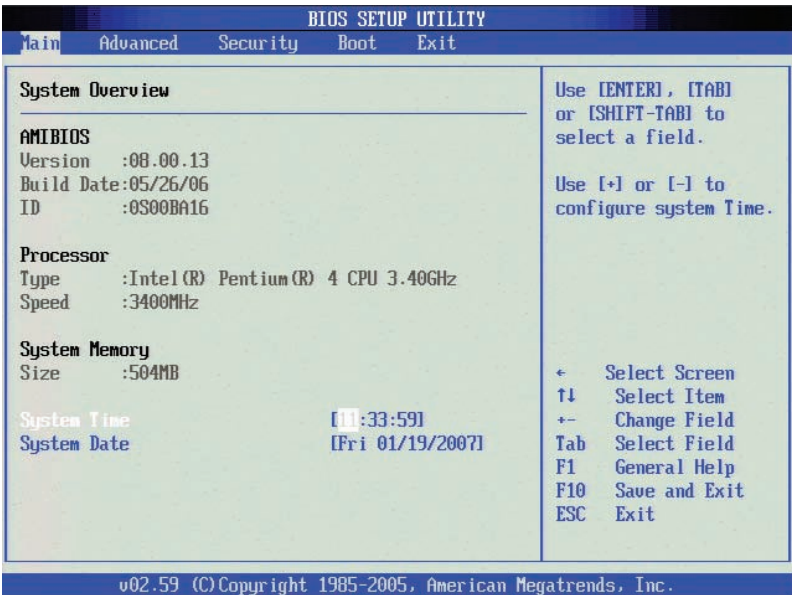
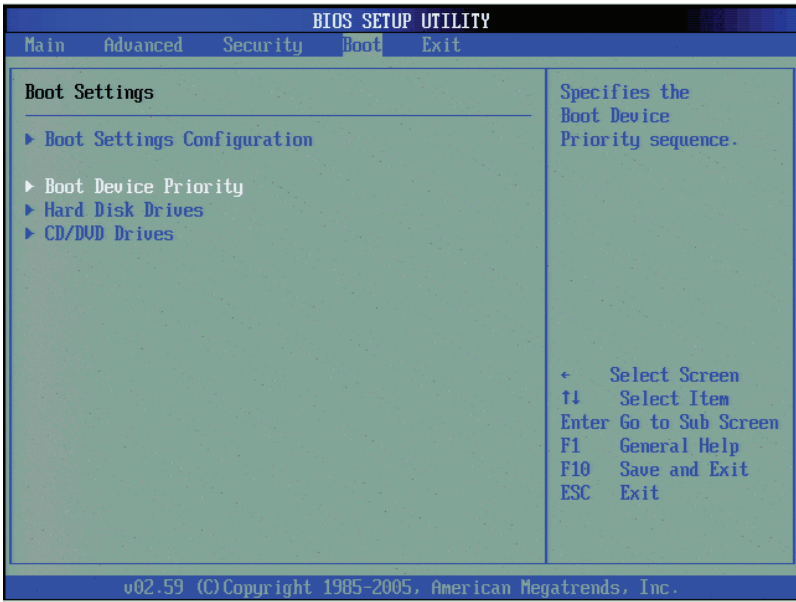


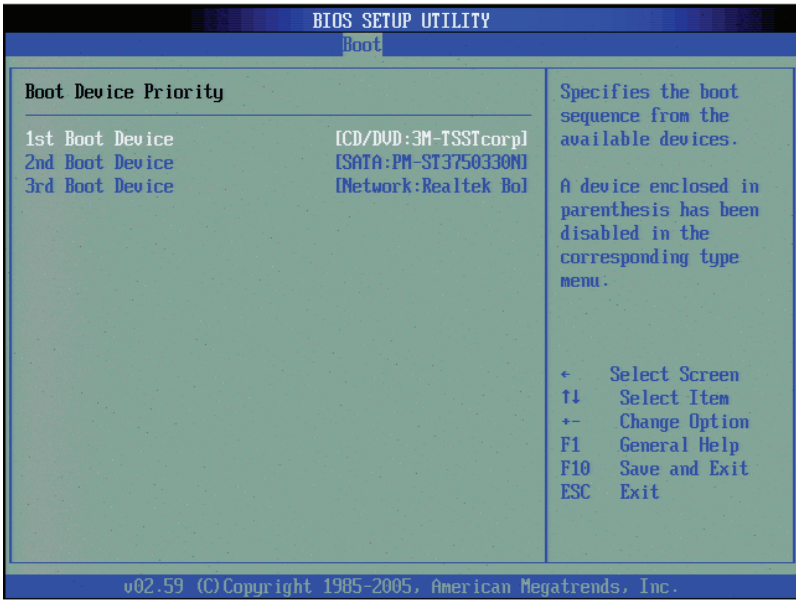
Figure 6. DX8100 BIOS Setup Utility Main Page

4. Go to the Boot menu, and then press the down arrow key to highlight the Boot Device Priority setting (refer to Figure 7).



**Figure 7.** DX8100 Boot Settings View

5. Press Enter. The Boot Device Priority screen appears.



**Figure 8.** DX8100 Boot Device Priority View

6. Press the plus sign (+) or minus sign (-) until CD/DVD appears first in the list.
7. Press F10 and then select OK to save your changes and exit.
8. When the warning message appears, select one of the following options:



**WARNING:** Continuing with the following steps will delete all data, including video and system settings on the primary HDD.

- **Partition the system HDD:** Type **Y**. The partitioning process starts.
- **Cancel partitioning the system HDD:** Type **N**. The process terminates and the unit exits to the command prompt.

The system displays the finished message as soon as the partitioning process is complete.

9. Eject the CD-DX81Partition disc.
10. Install the Windows and DX8100 application software (refer to *Installing Windows and DX8100 Application Software* on page 16).

# INSTALLING WINDOWS AND DX8100 APPLICATION SOFTWARE

1. Insert the DX8100 Recovery disc in the DX8100 CD/DVD drive.
2. Press Ctrl + Alt + Delete to restart the DX8100.
3. The DX8100 will restart and prompt you by displaying "Press any key to boot from CD."  
**NOTE:** This prompt is displayed for only a few seconds. If missed, the unit will not boot from the DX8100 Recovery disc.
4. Press the Space bar. When the loading process completes, the End User License Agreement dialog box opens.
5. Do one of the following:
  - Click Accept to accept the licensing terms. The Warning screen is displayed.
  - Click Cancel.
6. Type **Yes** in the text box to agree to the recovery procedure, and then click Proceed.

The Partition Size Verification dialog box appears and a progress bar reports the system software installation (refer to Figure 9). The DX8100 recovery procedure will replace the contents of your primary drive C partition with a hard disk image of the Windows and DX8100 application software. The imaging process may take up to 20 minutes. Do not press any keys or restart your HVR/DVR during the installation procedure.

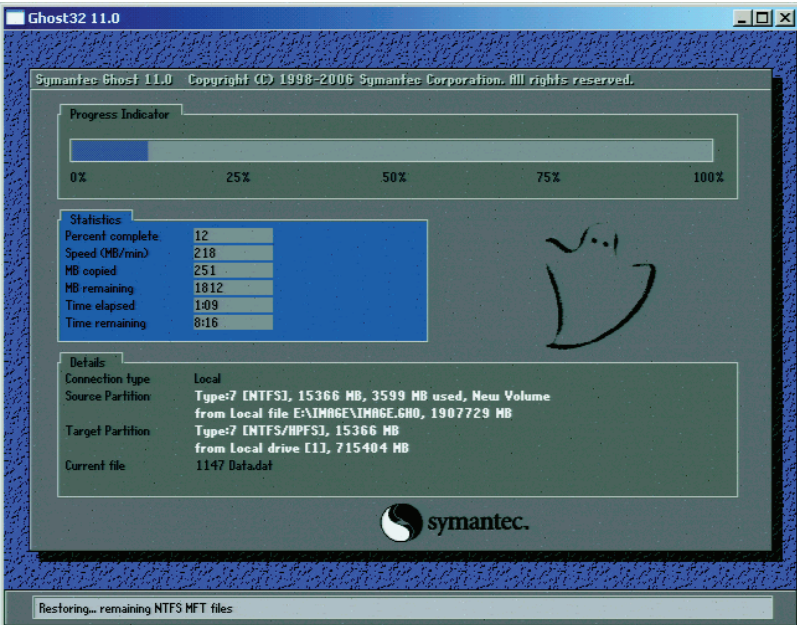
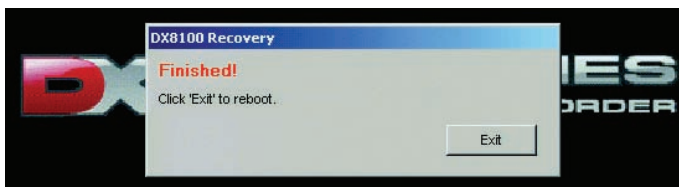


Figure 9. Partition Size Verification Dialog Box



7. The DX8100 Recovery dialog appears when the recovery process is complete (refer to Figure 10).



**Figure 10.** DX8100 Recovery Dialog Box

- a. Do not eject the DX8100 Recovery disc.
- b. Click Exit. The system restarts.
8. Restore the BIOS to the proper boot setting.
  - a. Enter the BIOS by pressing the Delete key when the Pelco splash screen is displayed.
  - b. Go to the boot menu and select Boot Device Priority.
  - c. Press Enter. The Boot Device Priority screen appears.
  - d. Press the plus sign (+) or minus sign (-) until SATA appears first in the list.
9. Eject the DX8100 Recovery disc.
10. Press F10 and then select OK to save changes and exit. The DX8100 reboots.
11. If the System Settings Change dialog box appears, click Yes. The DX8100 reboots again and displays the PDB Initialize dialog box.
12. Use the PDB Initialize dialog to initialize the new HDDs for use with the DX8100 database:
  - a. Click Cancel. The “Log On to Windows” dialog box opens.
  - b. Enter the Windows operating system user name. (The default user name is DX8100ADM.)
  - c. Enter the Windows operating system password. (The default password is dx8100.)
  - d. Click OK. The system logs on to the Windows operating system.
  - e. Click Start.
  - f. Click Shut Down. The Shut Down Windows dialog box opens.
  - g. Select Restart from the drop-down menu.
  - h. Click OK. The DX8100 restarts.
  - i. Click Cancel. The “Log On to Windows” dialog appears.
  - j. Enter the Windows password and click OK. The system logs you into the Windows operating system.
13. Configure the system drive data partition (refer to *Setting Up the System Data Partition* on page 18).

# SETTING UP THE SYSTEM DATA PARTITION

## NOTES:

- Pelco recommends that you create a full backup of your disk contents before you make any changes to your disks or volumes.
- The remaining space on the system drive must be configured to store recorded video data.
  1. Go to Start, and then select Run. The Run dialog box appears.
  2. In the Open text box, type **diskmgmt.msc**, and then click OK. The Disk Management dialog box appears (refer to Figure 11).

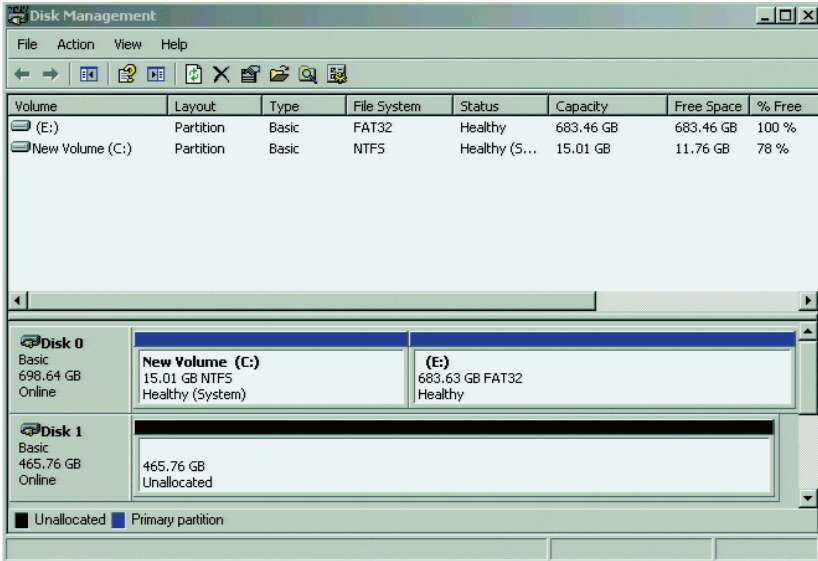


Figure 11. Disk Management Dialog Box

3. Reformat Volume E to the NTFS file system.
  - a. Right-click in the Volume E pane. The shortcut menu appears (refer to Figure 12).

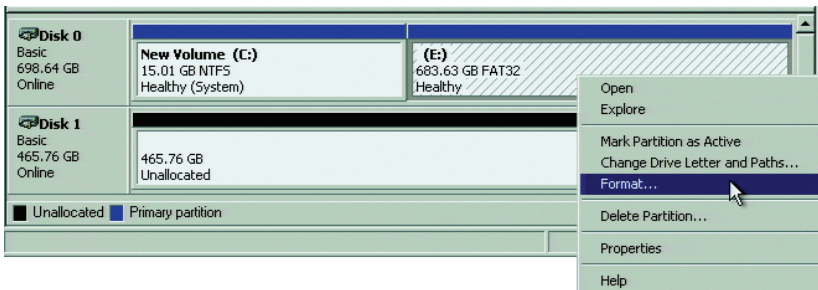
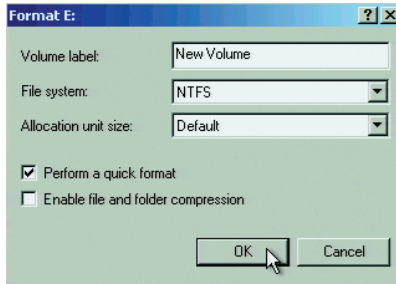


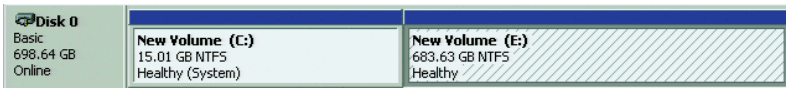
Figure 12. Formatting the System Drive Data Partition

- b. Click Format. The Format E: dialog appears (refer to Figure 13).



**Figure 13. Format E Dialog Box**

- c. Verify that NTFS is displayed in the “File system” drop-down box.
- d. Click the check box to select “Perform a quick format.”
- e. Click OK. The Format E: warning message appears.
- f. Read the warning message and then do one of the following:
- **Format the partition:** Click OK. The partition is formatted (refer to Figure 14).
  - **Not format the partition:** Click Cancel. Format E: warning dialog closes.



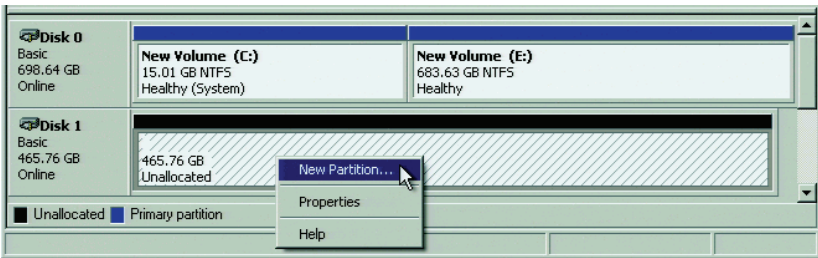
**Figure 14. Formatted Volume Status**

This completes the system drive configuration.

(Optional) If you installed a new data drive in the system disk mounting basket, refer to *Optional: Configuring the Data Drive* on page 20 to set up the data drive.

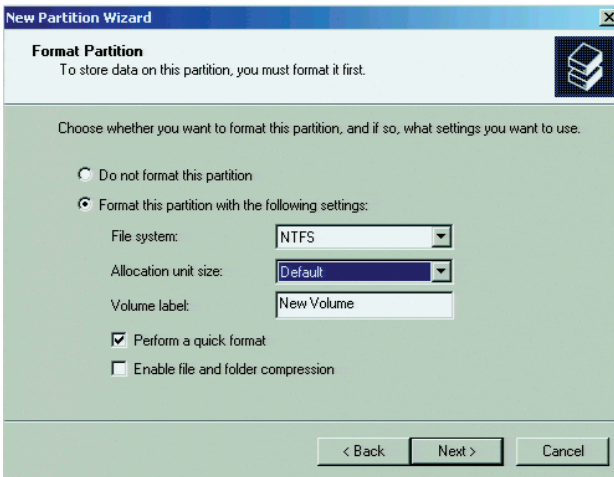
# OPTIONAL: CONFIGURING THE DATA DRIVE

1. Right-click the unallocated drives pane. The shortcut menu appears (refer to Figure 15).



**Figure 15.** Configuring the Data Drive

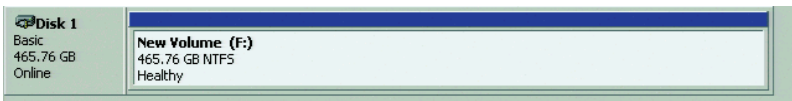
2. Select the partition format settings:
  - a. Click New Partition. The New Partition Wizard appears.
  - b. Click Next. The Select Partition Type dialog appears.
  - c. Verify that the "Primary partition" option is selected.
  - d. Click Next. The Specify Partition Size dialog appears.
  - e. Click Next. The "Assign Drive Letter or Path" dialog appears.
  - f. Verify that the "Assign the following drive letter" option is selected.
  - g. Click Next. The Format Partition dialog appears (refer to Figure 16).



**Figure 16.** Format Partition Dialog Box

- h. Verify that the "Format this partition with the following settings" option is selected.
- i. Click the check box to select "Perform a quick format."

3. Click Next. The “Completing the New Partition Wizard” appears.
4. Click Finish. The drive is formatted (refer to Figure 17).



**Figure 17.** Formatted Data Drive

5. Close the Disk Management dialog. The Windows operating system appears.
6. Allocate the data partitions for the system drive and optionally the data drive. For more information, refer to *Allocating a Drive* on page 26.

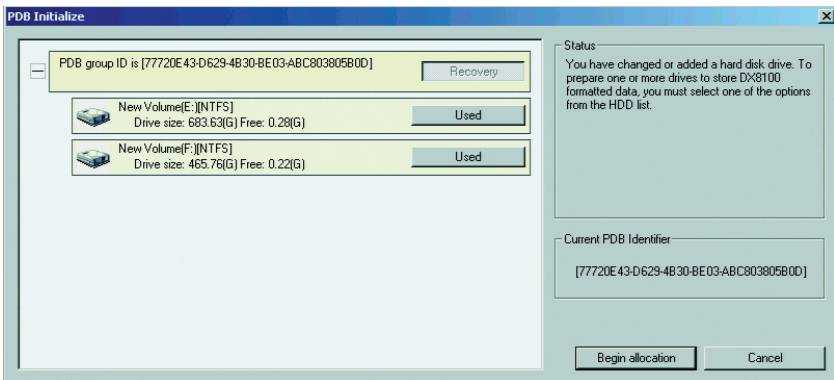
## Setting Up a Video Data Drive

To set up a video data drive, you will configure and partition the drive.

### CONFIGURING A HARD DRIVE

A new unformatted data HDD is not recognized by the system. The Windows Disk Management utility marks the drive as Unknown. The drive is not displayed in the PDB Initialize dialog.

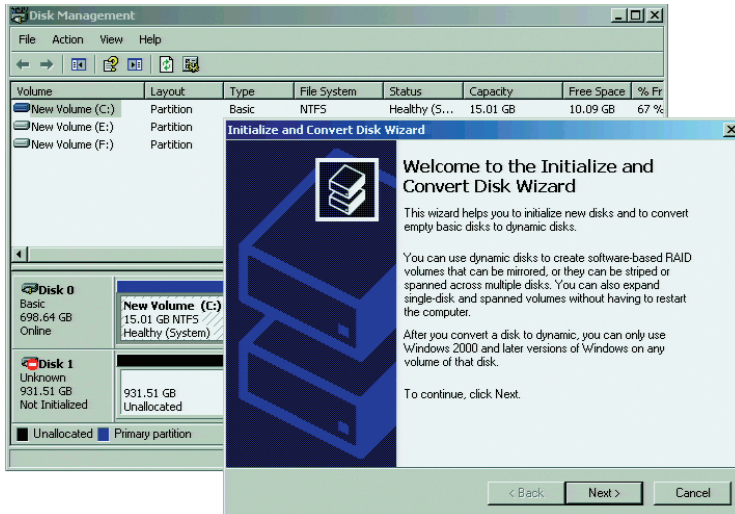
1. Restart the DX8100. The PDB Initialize dialog appears. The new drive does not appear in the PDB Initialize dialog.



**Figure 18.** New Data Disk Not Shown

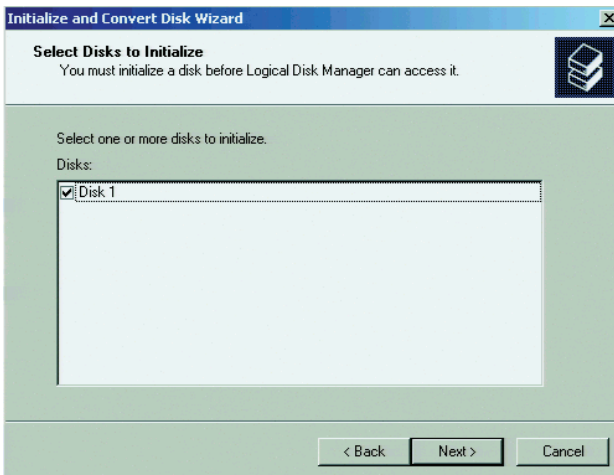
2. Set up the data drive:
  - a. Click Cancel. The “Log On to Windows” dialog box opens.
  - b. Enter the Windows operating system user name. (The default user name is DX8100ADM.)
  - c. Enter the Windows operating system password. (The default password is dx8100.)
  - d. Click OK. The system logs on to the Windows operating system.
3. Go to Start, and then select Run. The Run dialog box appears.

4. In the Open text box, type **diskmgmt.msc**, and then click OK. The “Initialize and Convert Disk Wizard” appears. The new data drive is listed as Unknown and Not Initialized (refer to Figure 19).



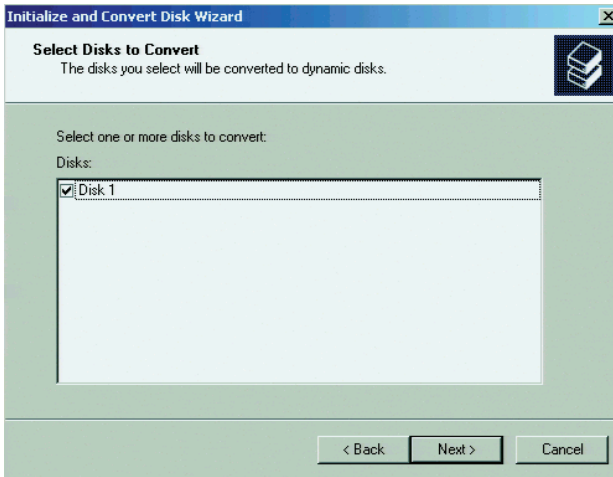
**Figure 19.** Initialize and Convert Disk Wizard

5. Click Next. The “Select Disks to Initialize” dialog appears (refer to Figure 20).



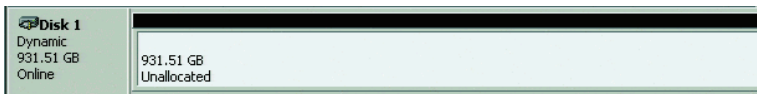
**Figure 20.** Select Disks to Initialize Dialog

- Click Next. The “Select Disks to Convert” dialog appears (refer to Figure 21).



**Figure 21.** Select Disks to Convert Dialog

- Click Next. The “Completing the Initialize and Convert Disk Wizard” appears.
- Click Finish. The data disk status changes to Dynamic (refer to Figure 22).

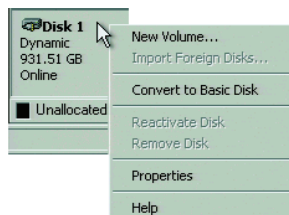


**Figure 22.** Data Disk Status Changed to Dynamic

- Configure the data drive as a basic disk (refer to *Converting a Dynamic Disk to a Basic Disk*).

## CONVERTING A DYNAMIC DISK TO A BASIC DISK

- Right-click Disk. The shortcut menu appears (refer to Figure 23).

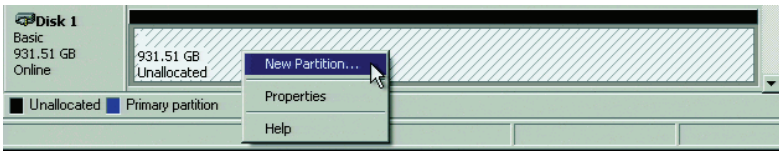


**Figure 23.** Shortcut Menu

- Click Convert to Basic Disk. The disk status changes to basic.
- Partition the drive (refer to *Partitioning the Data Disk* on page 24).

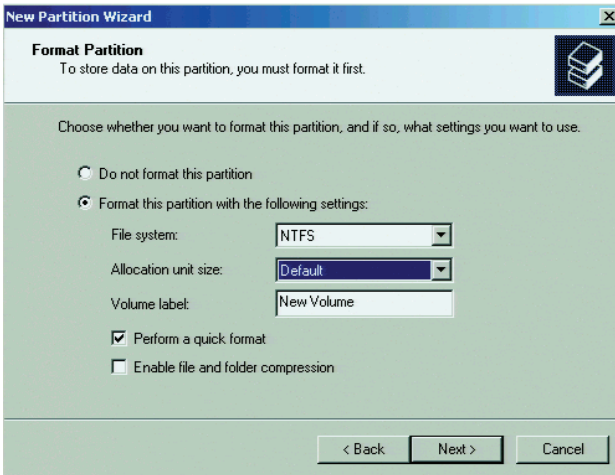
# PARTITIONING THE DATA DISK

1. Right-click the unallocated disk pane. The shortcut menu appears (refer to Figure 24).



**Figure 24.** Partitioning the Data Disk

2. Select the partition format settings:
  - a. Click New Partition. The New Partition Wizard appears.
  - b. Click Next. The Select Partition Type dialog appears.
  - c. Verify that the "Primary partition" option is selected.
  - d. Click Next. The Specify Partition Size dialog appears.
  - e. Click Next. The "Assign Drive Letter or Path" dialog appears.
  - f. Verify that the "Assign the following drive letter" radial button is selected.
  - g. Click Next. The Format Partition dialog appears (refer to Figure 25).



**Figure 25.** Format Partition Dialog Box

- h. Verify that the "Format this partition with the following settings" option is selected.
  - i. Click the check box to select "Perform a quick format."
3. Click Next. The "Completing the New Partition Wizard" appears.
  4. Click Finish.
  5. Close the Disk Management dialog.
  6. Reinstall the unit (refer to *Reinstalling the DX8100* on page 25).



# Reinstalling the DX8100

---

1. Replace the chassis cover using the screws you removed from the sides and rear of the unit (refer to Figure 1 on page 8).
2. Attach the silver product label for your upgrade kit to the inside of your unit front door.

**NOTE:** In the event that your unit or its components require service, specific labels must be present and appropriately affixed to the unit's door. Pelco product support personnel use these labels to identify the exact components installed in your system. A separate product label is required for each upgrade component installed on the DX8100.

3. Reinstall the unit in a rack enclosure, if necessary, and reconnect all of the cables and peripheral equipment you removed earlier.

To complete the installation procedure, you must allocate the system and data drives.

- **Allocating a system drive data partition and data drive:** Refer to *Allocating a System and Data Drive Simultaneously* on page 26.
- **Allocating a video data drive:** Refer to *Allocating a New Video Data Drive* on page 28.

# Allocating a Drive

## ALLOCATING A SYSTEM AND DATA DRIVE SIMULTANEOUSLY

This section describes how to allocate a system drive's data partition and a data drive at the same time.

**NOTE:** The system drive's data partition and the data drive must already be formatted and partitioned. For information about configuring a system drive data partition and data drive, refer to *Setting Up the System Drive* on page 13. For information about configuring only a data drive, refer to *Setting Up a Video Data Drive* on page 21.

1. Go to Start and select Shut Down. The Shut Down Windows dialog appears.
2. Select Restart and then click OK. When the unit restarts, the PDB Initialize dialog appears.
3. Locate the option "Space on one or more hard disk drives has not yet been allocated to the PDB database."
4. Click the plus (+) sign to expand the list (refer to Figure 26).

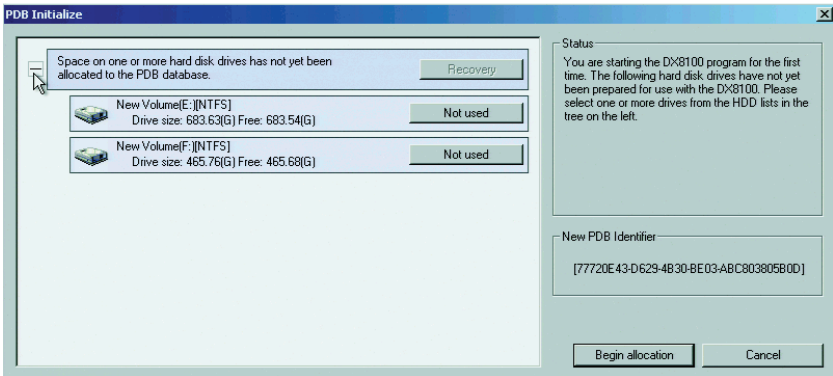


Figure 26. Expanding the PDB IG Group Box

5. In the New Volume (E:) box, click the "Not used" button, and then select Allocation. The shortcut menu appears and the Allocation command is highlighted (refer to Figure 27).

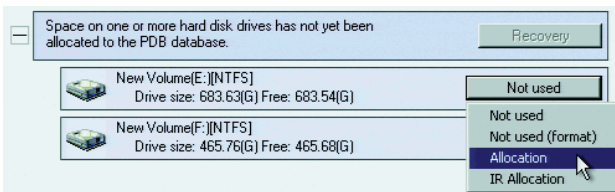
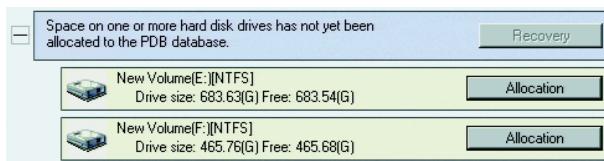


Figure 27. Selecting the System Data Partition for Allocated

- Repeat steps 4 and 5 to convert other data drives (refer to Figure 28).



**Figure 28.** Configuring HDDs for Allocation

- Click "Begin allocation." The Warning dialog box opens (refer to Figure 29).



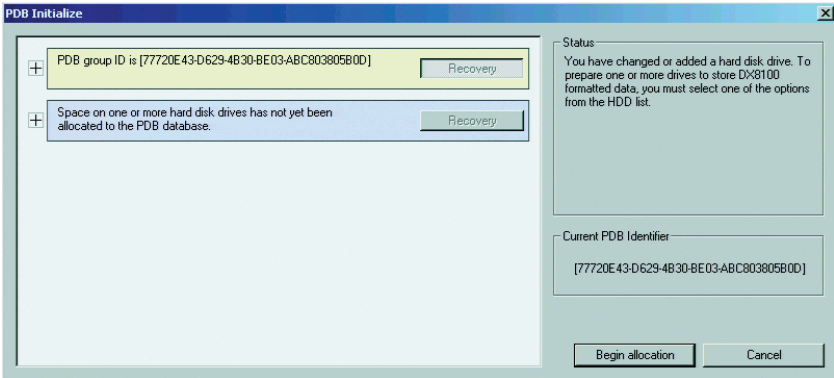
**Figure 29.** Format Warning Dialog Box

- Click Yes to start the allocation process for the selected drive. Click No to cancel the allocation process.
- After the storage allocation procedure is complete, the DX8100 will start automatically and resume service.

# ALLOCATING A NEW VIDEO DATA DRIVE

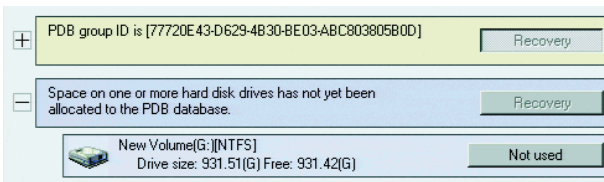
Perform the procedure in this section if you installed a video data drive.

1. Go to Start and select Shut Down. The Shut Down Windows dialog appears.
2. Select Restart and then click OK. When the unit restarts, the PDB Initialize dialog appears (refer to Figure 30).



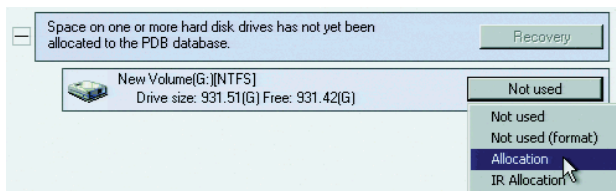
**Figure 30.** Opening List of Drives

3. Locate the option "Space on one or more hard disk drives has not yet been allocated to the PDB database."
4. Click the plus (+) sign to expand the list (refer to Figure 31). More than one drive might be shown.



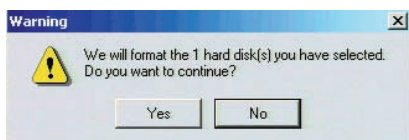
**Figure 31.** Viewing the Unallocated Drive

5. For each drive listed (refer to Figure 32):
  - a. Click the "Not used" button. The drop-down menu appears.
  - b. Click Allocation.



**Figure 32.** Selecting the Allocation Option

6. Click "Begin allocation." A warning dialog box opens (refer to Figure 33).



**Figure 33.** Format Warning Dialog Box

7. Click Yes to start the allocation process for the selected drive. Click No to cancel the allocation process.
8. After the storage allocation procedure is complete, the DX8100 will start automatically and resume service.

## REVISION HISTORY

<b>Manual #</b>	<b>Date</b>	<b>Comments</b>
C2639M	3/07	Original version.
C2639M-A	12/07	Adds the disk partition procedure and replaces the reinstallation DVD with the recovery DVD procedure.
C2639M-B	8/09	Updates reorganizes and updates the system and data drive installation and configuration sections.

# PRODUCT WARRANTY AND RETURN INFORMATION

## WARRANTY

Pelco will repair or replace, without charge, any merchandise proved defective in material or workmanship **for a period of one year** after the date of shipment.

Exceptions to this warranty are as noted below:

- Five years:
  - Fiber optic products
  - TW3000 Series unshielded twisted pair (UTP) transmission products
  - CC3701H-2, CC3701H-2X, CC3751H-2, CC3651H-2X, MC3651H-2, and MC3651H-2X camera models
- Three years:
  - Pelco-branded fixed camera models (CCC1390H Series, C10DN Series, C10CH Series, IP3701H Series, and IX Series)
  - EH1500 Series enclosures
  - Spectra<sup>®</sup> IV products (including Spectra IV IP)
  - Camclosure<sup>®</sup> Series (IS, ICS, IP) integrated camera systems
  - DX Series digital video recorders, DVR5100 Series digital video recorders, Digital Sentry<sup>®</sup> Series hardware products, DVX Series digital video recorders, and NVR300 Series network video recorders
  - Endura<sup>®</sup> Series distributed network-based video products
  - Genex<sup>®</sup> Series products (multiplexers, server, and keyboard)
  - PMCL200/300/400 Series LCD monitors
- Two years:
  - Standard varifocal, fixed focal, and motorized zoom lenses.
  - DF5/DF8 Series fixed dome products
  - Legacy<sup>®</sup> Series integrated positioning systems
  - Spectra III<sup>™</sup>, Spectra Mini, Spectra Mini IP, Esprit<sup>®</sup>, ExSite<sup>®</sup>, and PS20 scanners, including when used in continuous motion applications.
  - Esprit Ti and TI2500 Series thermal imaging products
  - Esprit and VVV5700 Series window wiper (excluding wiper blades).
  - CM6700/CM6800/CM9700 Series matrix
  - Digital Light Processing (DLP<sup>®</sup>) displays (except lamp and color wheel). The lamp and color wheel will be covered for a period of 90 days. The air filter is not covered under warranty.
  - Intelli-M<sup>®</sup> eIDC controllers
- One year:
  - Video cassette recorders (VCRs), except video heads. Video heads will be covered for a period of six months.
- Six months:
  - All pan and tilts, scanners, or preset lenses used in continuous motion applications (preset scan, tour, and auto scan modes).

Pelco will warrant all replacement parts and repairs for 90 days from the date of Pelco shipment. All goods requiring warranty repair shall be sent freight prepaid to a Pelco designated location. Repairs made necessary by reason of misuse, alteration, normal wear, or accident are not covered under this warranty.

Pelco assumes no risk and shall be subject to no liability for damages or loss resulting from the specific use or application made of the Products. Pelco's liability for any claim, whether based on breach of contract, negligence, infringement of any rights of any party or product liability, relating to the Products shall not exceed the price paid by the Dealer to Pelco for such Products. In no event will Pelco be liable for any special, incidental, or consequential damages (including loss of use, loss of profit, and claims of third parties) however caused, whether by the negligence of Pelco or otherwise.

The above warranty provides the Dealer with specific legal rights. The Dealer may also have additional rights, which are subject to variation from state to state.

If a warranty repair is required, the Dealer must contact Pelco at (800) 289-9100 or (559) 292-1981 to obtain a Repair Authorization number (RA), and provide the following information:

1. Model and serial number
2. Date of shipment, P.O. number, sales order number, or Pelco invoice number
3. Details of the defect or problem

If there is a dispute regarding the warranty of a product that does not fall under the warranty conditions stated above, please include a written explanation with the product when returned.

Method of return shipment shall be the same or equal to the method by which the item was received by Pelco.

## RETURNS

To expedite parts returned for repair or credit, please call Pelco at (800) 289-9100 or (559) 292-1981 to obtain an authorization number (CA number if returned for credit, and RA number if returned for repair) and designated return location.

All merchandise returned for credit may be subject to a 20 percent restocking and refurbishing charge.

Goods returned for repair or credit should be clearly identified with the assigned CA or RA number and freight should be prepaid

12-23-08

Pelco, the Pelco logo, Camclosure, Digital Sentry, Endura, Esprit, ExSite, Genex, Intelli-M, Legacy, and Spectra are registered trademarks of Pelco, Inc. Spectra III is a trademark of Pelco, Inc.

DLP is a registered trademark of Texas Instruments Incorporated.

All product names and services identified throughout this document are trademarks or registered trademarks of their respective companies.

The absence of a trademark or registered trademark from this document does not constitute a waiver of intellectual property rights.

© Copyright 2009, Pelco, Inc. All rights reserved.

***PELCO***

by **Schneider** Electric

[www.pelco.com](http://www.pelco.com)

Pelco, Inc. Worldwide Headquarters 3500 Pelco Way Clovis, California 93612 USA  
USA & Canada Tel (800) 289-9100 Fax (800) 289-9150  
International Tel +1 (559) 292-1981 Fax +1 (559) 348-1120