



Product End-of-Life Disassembly Instructions

Product Category: Notebooks and Tablet PCs

Marketing Name / Model
 [List multiple models if applicable.]

HP 620 Notebook PC

Name / Model #2

Name / Model #3

Name / Model #4

Name / Model #5

Purpose: The document is intended for use by end-of-life recyclers or treatment facilities. It provides the basic instructions for the disassembly of HP products to remove components and materials requiring selective treatment, as defined by EU directive 2002/96/EC, Waste Electrical and Electronic Equipment (WEEE).

1.0 Items Requiring Selective Treatment

1.1 Items listed below are classified as requiring selective treatment.

1.2 Enter the quantity of items contained within the product which require selective treatment in the right column, as applicable.

| Item Description | Notes | Quantity of items included in product |
|--|---|---------------------------------------|
| Printed Circuit Boards (PCB) or Printed Circuit Assemblies (PCA) | With a surface greater than 10 sq cm | 3 |
| Batteries | All types including standard alkaline and lithium coin or button style batteries | 2 |
| Mercury-containing components | For example, mercury in lamps, display backlights, scanner lamps, switches, batteries | 1 |
| Liquid Crystal Displays (LCD) with a surface greater than 100 sq cm | Includes background illuminated displays with gas discharge lamps | 1 |
| Cathode Ray Tubes (CRT) | | 0 |
| Capacitors / condensers (Containing PCB/PCT) | | 0 |
| Electrolytic Capacitors / Condensers measuring greater than 2.5 cm in diameter or height | | 0 |
| External electrical cables and cords | | 0 |
| Gas Discharge Lamps | | 0 |
| Plastics containing Brominated Flame Retardants | | 0 |
| Components and parts containing toner and ink, including liquids, semi-liquids (gel/paste) and toner | Include the cartridges, print heads, tubes, vent chambers, and service stations. | 0 |
| Components and waste containing asbestos | | 0 |
| Components, parts and materials containing refractory ceramic fibers | | 0 |

| | | |
|---|--|---|
| Components, parts and materials containing radioactive substances | | 0 |
|---|--|---|

2.0 Tools Required

List the type and size of the tools that would typically be used to disassemble the product to a point where components and materials requiring selective treatment can be removed.

| Tool Description | Tool Size (if applicable) |
|---------------------------------------|---------------------------|
| Description #1 Motor-screw-driver "+" | Cross head of screwdriver |
| Description #2 Motor-screw-driver "*" | TORX T8 (2.31mm) |
| Description #3 Motor-screw-driver "-" | |
| | |
| | |

3.0 Product Disassembly Process

3.1 List the basic steps that should typically be followed to remove components and materials requiring selective treatment:

1. Follow steps described in Disassembly instruction (file attached).
2. If parts can be removed without using a tool, remove it first.
3. Use correct screwdriver and torque value before unlock the screw.
- 4.
- 5.
- 6.
- 7.
- 8.

3.2 Optional Graphic. If the disassembly process is complex, insert a graphic illustration below to identify the items contained in the product that require selective treatment (with descriptions and arrows identifying locations).



Working Instruction

Document No. : SOP VV10 FA

Station : 1(1/1)

Name : Disassemble Battery

Ver. : 0.20

Date : 2010/03/08



Fig.1

STEP :

1. Disassemble Battery (Fig.1) ◦

Point for attention : If finding some defects, notice the gaffer and assistant

| Fixture list (Fixture standard) | Qty | Fixture list (Fixture standard) | Qty |
|-----------------------------------|-----|-----------------------------------|-----|
| Notebook | 1 | | |
| Scanner | 1 | | |
| Bar code printer | 1 | | |

Tabulator : Zhang Ying

Issuing department : IE



Working Instruction

Document No. : SOP VV10 FA

Station : 2(1/1)

Name : Loosen screws & Disassemble Cover

Ver. : 0.20

Date : 2010/03/08

STEP :

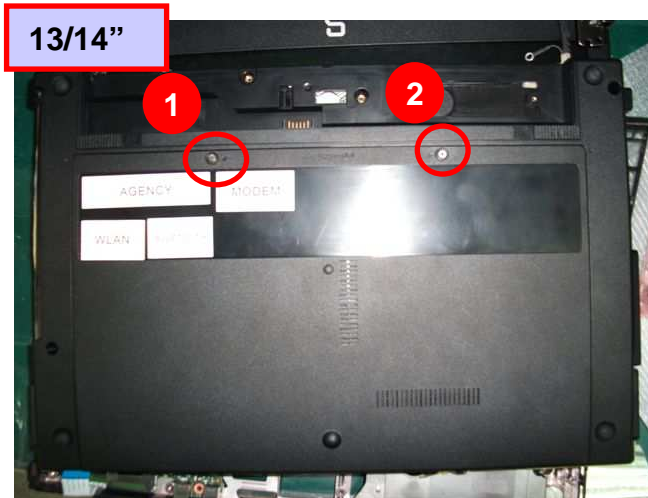
1. Loosen SET screws .

❖ Torsion : 1.0 ± 0.2 Kgf · cm

❖ 13&14 Loosen screws*2 ; 15 Loosen screws*4

2. Disassemble Cover .

| | |
|-----------|--------------|
| 13" & 14" | 6070B0431301 |
| 15" | 6070B0431201 |



Point for attention : If finding some defects, notice the gaffer and assistant

| Fixture list (Fixture standard) | Qty | Fixture list (Fixture standard) | Qty |
|-----------------------------------|-----|-----------------------------------|-----|
| Automatic crossing screw driver | 1 | | |

Tabulator : Zhang Ying

Issuing department : IE



Working Instruction

Document No. : SOP VV10 FA

Station : 3(1/1)

Name : Loosen screws & Disassemble ODD

Ver. : 0.20

Date : 2010/03/08

STEP :

For All

1. Loosen screws (60520D046304) * 1 , and Disassemble ODD ◦

❖ Torsion: $2.0 \pm 0.2\text{Kgf. cm}$

❖ Screws can't be stripped.

For 13&14

For 15"



Point for attention : If finding some defects, notice the gaffer and assistant

| Fixture list (Fixture standard) | Qty | Fixture list (Fixture standard) | Qty |
|-------------------------------------|-----|-----------------------------------|-----|
| Automatic crossing screw driver(T8) | 1 | | |

Tabulator : Zhang Ying

Issuing department : IE



Working Instruction

Document No. : SOP VV10 FA

Station : 4(1/1)

Name : Disassemble HDD & Loosen screws

Ver. : 0.20

Date : 2010/03/08

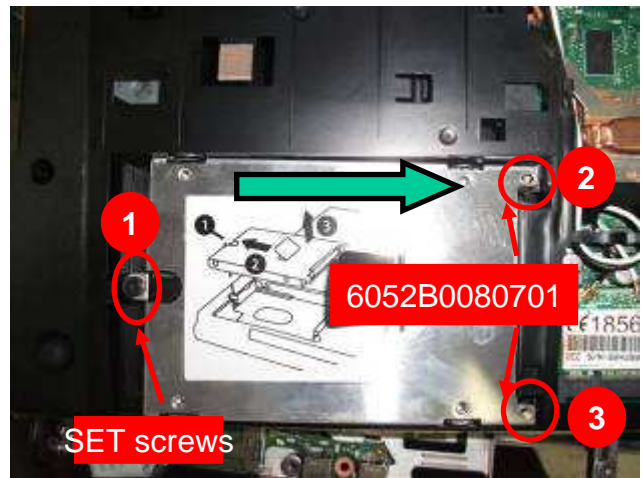
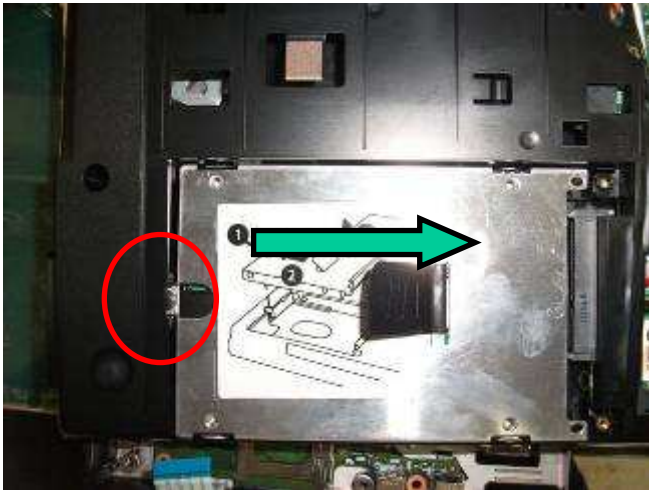
STEP :

1. Loosen HDD screws(6052B0080701) * 2 and setscrews * 1

❖ Torsion: 2.0 ± 0.2 Kgf. cm

❖ Screws can't be stripped.

2. Disassemble HDD and take it out.



Point for attention : If finding some defects, notice the gaffer and assistant

| Fixture list (Fixture standard) | Qty | Fixture list (Fixture standard) | Qty |
|-----------------------------------|-----|-----------------------------------|-----|
| Automatic crossing screw driver | 1 | | |

Tabulator : Zhang Ying

Issuing department : IE



Working Instruction

Document No. : SOP VV10 FA

Station : 5(1/1)

Name : Disassemble Antenna Cable

Ver. : 0.20

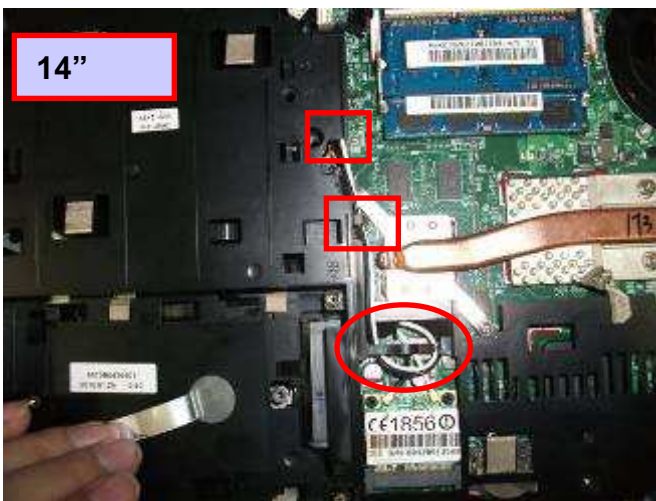
Date : 2010/03/08

STEP :



1. Disassemble Antenna interface from WLAN ◦

2. Disassemble Antenna Cable ◦



Point for attention : If finding some defects, notice the gaffer and assistant

| Fixture list (Fixture standard) | Qty | Fixture list (Fixture standard) | Qty |
|-----------------------------------|-----|-----------------------------------|-----|
| | | | |

Tabulator : Zhang Ying

Issuing department : IE



Working Instruction

Document No. : SOP VV10 FA

Station : 6(1/1)

Name : Loosen screws & Disassemble WLAN Ver. : 0.20

Date : 2010/03/08

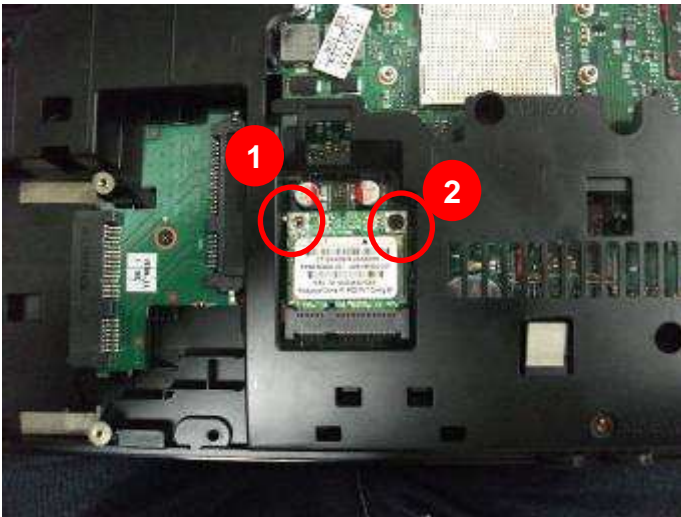
STEP :

1. Loosen WLAN Screws(6052B0156101) * 2 .

❖ Torsion: $1.5 \pm 0.2\text{Kgf. cm}$

❖ Screws can't be stripped.

2. Take out WLAN .



Point for attention : If finding some defects, notice the gaffer and assistant

| Fixture list (Fixture standard) | Qty | Fixture list (Fixture standard) | Qty |
|-----------------------------------|-----|-----------------------------------|-----|
| Automatic crossing screw driver | 1 | | |

Tabulator : Zhang Ying

Issuing department : IE



Working Instruction

Document No. : SOP VV10 FA

Station : 7(1/1)

Name : Loosen screws

Ver. : 0.20

Date : 2010/03/08

STEP :

13/14"



1. Loosen screws (6052B0156101) ◦

❖ Torsion : 1.5 ± 0.2 Kgf · cm

❖ 13"&14"Loosen 2 screws,15"Loosen 2 screws

❖ Screws can't be stripped.

15"



Point for attention : If finding some defects, notice the gaffer and assistant

| Fixture list (Fixture standard) | Qty | Fixture list (Fixture standard) | Qty |
|-----------------------------------|-----|-----------------------------------|-----|
| Automatic crossing screw driver | 1 | | |

Tabulator : Zhang Ying

Issuing department : IE



Working Instruction

Document No. : SOP VV10 FA

Station : 8(1/1)

Name : Disassemble FAN / BATT Cable

Ver. : 0.20

Date : 2010/03/08

STEP :

1. Disassemble BATT Cable .
2. Disassemble FAN Cable .



Point for attention : If finding some defects, notice the gaffer and assistant

| Fixture list (Fixture standard) | Qty | Fixture list (Fixture standard) | Qty |
|-----------------------------------|-----|-----------------------------------|-----|
| | | | |

Tabulator : Zhang Ying

Issuing department : IE



Working Instruction

Document No. : SOP VV10 FA
Name : Loosen screws

Station : 9(1/1)
Ver. : 0.20 Date : 2010/03/08

FOR 13" & 14"

STEP :



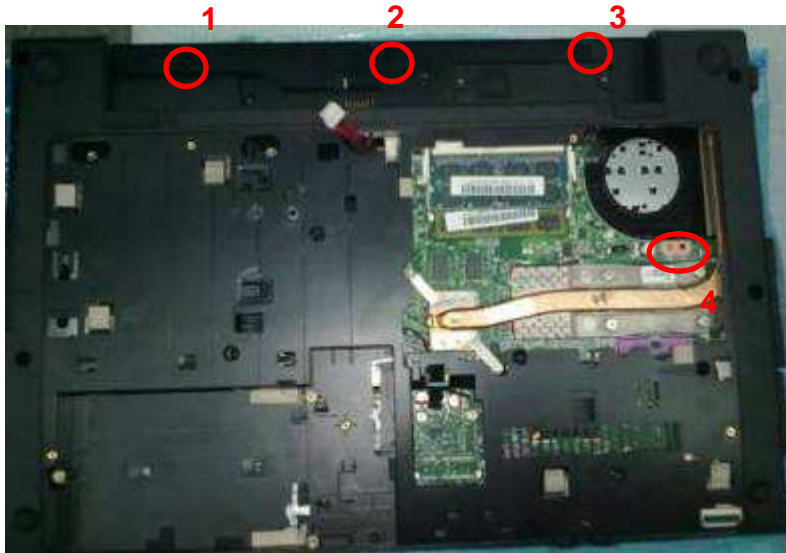
1. Loosen screws (6052B0096201) of SW cover *3 °

❖ Torsion : 2.0 ± 0.2 Kgf · cm

❖ 13"&14" Loosen 3 screws , 15" Loosen 4screws

❖ Screws can't be stripped.

FOR 15"



Point for attention : If finding some defects, notice the gaffer and assistant

| Fixture list (Fixture standard) | Qty | Fixture list (Fixture standard) | Qty |
|-----------------------------------|-----|-----------------------------------|-----|
| Automatic crossing screw driver | 1 | | |

Tabulator : Zhang Ying

Issuing department : IE



Working Instruction

Document No. : SOP VV10 FA

Station : 10(1/1)

Name : Disassemble HDD extension board(for 15") Ver. : 0.20

Date : 2010/03/08

STEP :

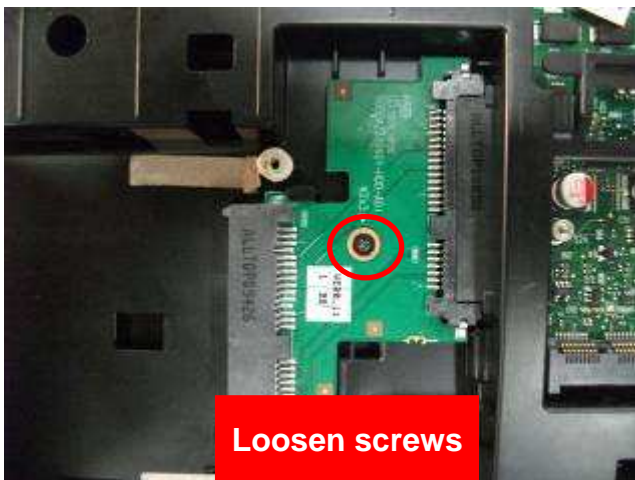
FOR 15" ONLY

1. Loosen screws (6052B0156101) * 1 ◦

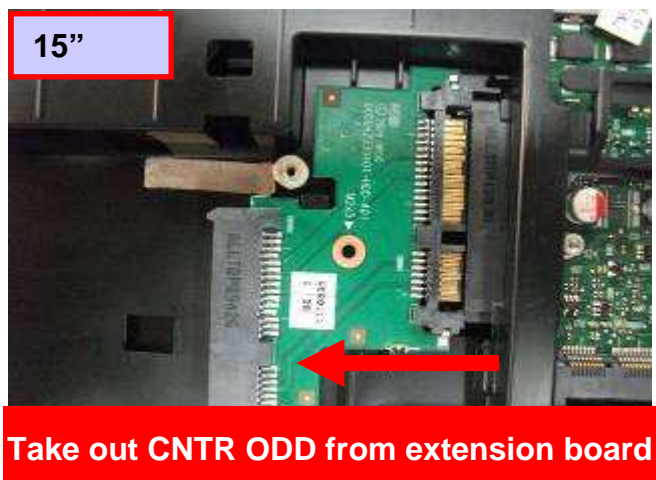
❖ Torsion : 2.0 ± 0.2 Kgf · cm

❖ Screws can't be stripped.

2. Take out HDD extension board (1310A2330401) ◦



Loosen screws



Take out CNTR ODD from extension board

Point for attention : If finding some defects, notice the gaffer and assistant

| Fixture list (Fixture standard) | Qty | Fixture list (Fixture standard) | Qty |
|-------------------------------------|-----|-----------------------------------|-----|
| Automatic crossing screw driver(1#) | 1 | | |

Tabulator : Zhang Ying

Issuing department : IE



Working Instruction

Document No. : SOP VV10 FA

Station : 11(1/1)

Name : Disassemble FAN

Ver. : 0.20

Date : 2010/03/08

STEP :

For 13&14:

1. Loosen FAN screws (6052B0156101) * 1.

❖ Torsion: 2.0 ± 0.2 Kgf. cm

❖ Screws can't be stripped.

2. Take out FAN (6033B0014602).



Point for attention : If finding some defects, notice the gaffer and assistant

| Fixture list (Fixture standard) | Qty | Fixture list (Fixture standard) | Qty |
|-----------------------------------|-----|-----------------------------------|-----|
| Automatic crossing screw driver | 1 | | |

Tabulator : Zhang Ying

Issuing department : IE



Working Instruction

Document No. : SOP VV10 FA

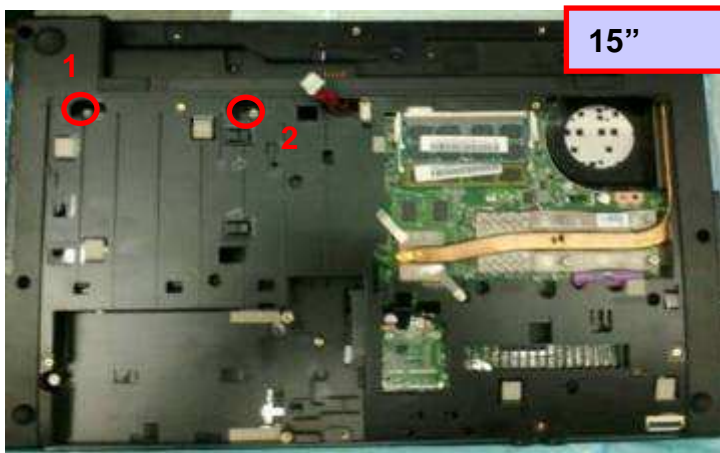
Station : 12(1/1)

Name : Loosen screws

Ver. : 0.20 Date : 2010/03/08

STEP :

- Loosen screws (6052B0097001)*2 of K/B .
 - ❖ Torsion : 2.0 ± 0.2 Kgf · cm
 - ❖ Screws can't be stripped.



Point for attention : If finding some defects, notice the gaffer and assistant

| Fixture list (Fixture standard) | Qty | Fixture list (Fixture standard) | Qty |
|-----------------------------------|-----|-----------------------------------|-----|
| Automatic crossing screw driver | 1 | | |

Tabulator : Zhang Ying

Issuing department : IE



Working Instruction

Document No. : SOP VV10 FA

Station : 13(1/1)

Name : 15" ONLY – Loosen screws

Ver. : 0.20

Date : 2010/03/08

STEP :

FOR 15" ONLY

1. Loosen screws (60520D046304) * 4 ◦

❖ Torsion : 2.0 ± 0.2 Kgf · cm

❖ Screws can't be stripped.



Point for attention : If finding some defects, notice the gaffer and assistant

| Fixture list (Fixture standard) | Qty | Fixture list (Fixture standard) | Qty |
|-------------------------------------|-----|-----------------------------------|-----|
| Automatic crossing screw driver(T8) | 1 | | |

Tabulator : Zhang Ying

Issuing department : IE



Working Instruction

Document No. : SOP VV10 FA

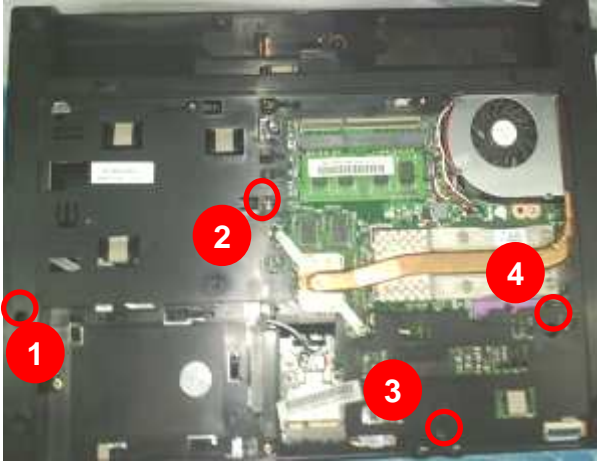
Station : 14(1/1)

Name : Loosen screws

Ver. : 0.20

Date : 2010/03/08

13/14"



STEP :

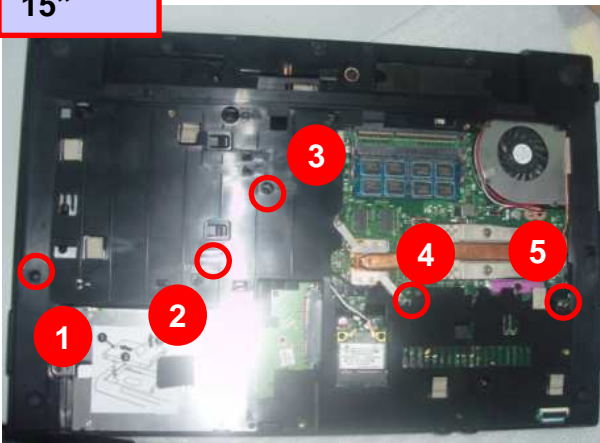
For 13&14:

1. Loosen screws (60520D046304) * 4 °
 - ❖ Torsion : 2.0 ± 0.2 Kgf · cm
 - ❖ Screws can't be stripped.

For 15:

1. Loosen screws (60520D046304) * 5 °
 - ❖ Torsion : 2.0 ± 0.2 Kgf · cm
 - ❖ Screws can't be stripped.

15"



Point for attention : If finding some defects, notice the gaffer and assistant

| Fixture list (Fixture standard) | Qty | Fixture list (Fixture standard) | Qty |
|-------------------------------------|-----|-----------------------------------|-----|
| Automatic crossing screw driver(T8) | 1 | | |

Tabulator : Zhang Ying

Issuing department : IE



Working Instruction

Document No. : SOP VV10 FA

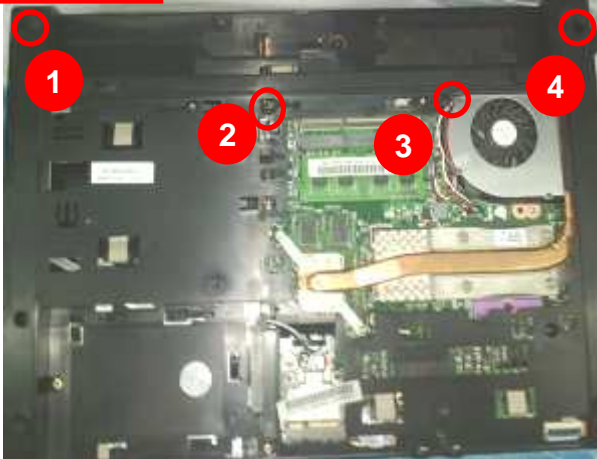
Station : 15(1/1)

Name : Loosen screws

Ver. : 0.20

Date : 2010/03/08

13/14"



STEP :

For 13&14

- Loosen screws (60520D046304) *4 °
 - ❖ Torsion : 2.0 ± 0.2 Kgf · cm
 - ❖ Screws can't be stripped.

For 15

- Loosen screws (60520D046304) * 5 °
 - ❖ Torsion : 2.0 ± 0.2 Kgf · cm
 - ❖ Screws can't be stripped.

15"



Point for attention : If finding some defects, notice the gaffer and assistant

| Fixture list (Fixture standard) | Qty | Fixture list (Fixture standard) | Qty |
|-------------------------------------|-----|-----------------------------------|-----|
| Automatic crossing screw driver(T8) | 1 | | |

Tabulator : Zhang Ying

Issuing department : IE



Working Instruction

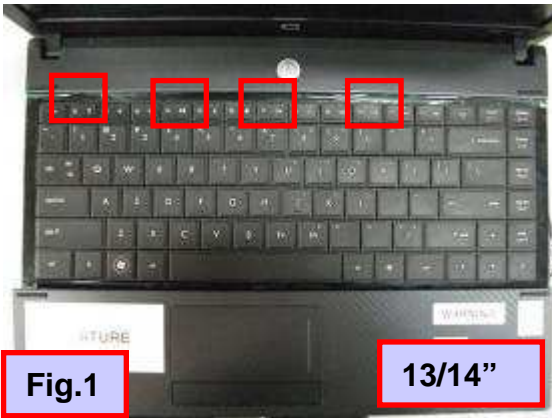
Document No. : SOP VV10 FA

Station : 16(1/1)

Name : Disassemble K/B

Ver. : 0.20

Date : 2010/03/08



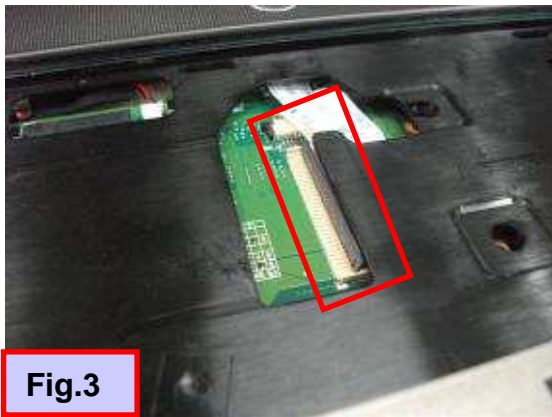
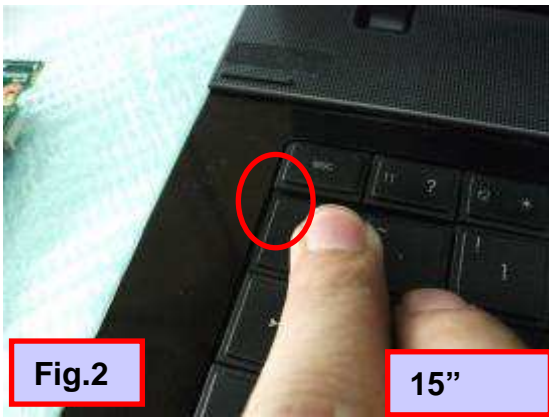
STEP :

1. Open LCM, turn the machine clock wisely

2. Disassemble K/B.

- ❖ 13'14' Disassemble from card ditch first (Fig.1)
- ❖ 15' Disassembl from upper left corner first (Fig.2)

3. Disassemble K/B FFC CNTR. (Fig.3)



Point for attention : If finding some defects, notice the gaffer and assistant

| Fixture list (Fixture standard) | Qty | Fixture list (Fixture standard) | Qty |
|-----------------------------------|-----|-----------------------------------|-----|
| | | | |

Tabulator : Zhang Ying

Issuing department : IE



Working Instruction

Document No. : SOP VV10 FA

Station : 17(1/1)

Name : Disassemble Palm from TPCB

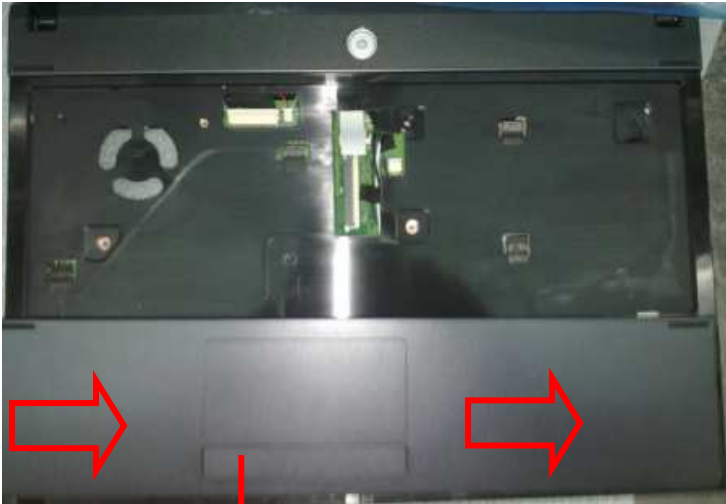
Ver. : 0.20

Date : 2010/03/08

STEP :

1. Disassemble Palm rest from TPCB .

- ❖ Push down the palm rest, and slip it to the right side.



**Slip Palm rest to the right side,
and take it out**

Point for attention : If finding some defects, notice the gaffer and assistant

| Fixture list (Fixture standard) | Qty | Fixture list (Fixture standard) | Qty |
|-----------------------------------|-----|-----------------------------------|-----|
| | | | |

Tabulator : Zhang Ying

Issuing department : IE



Working Instruction

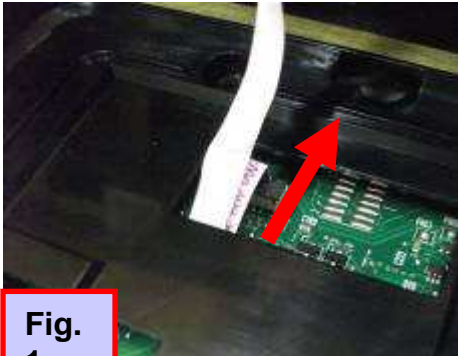
Document No. : SOP VV10 FA

Station : 18(1/1)

Name : Disassemble FFC

Ver. : 0.20

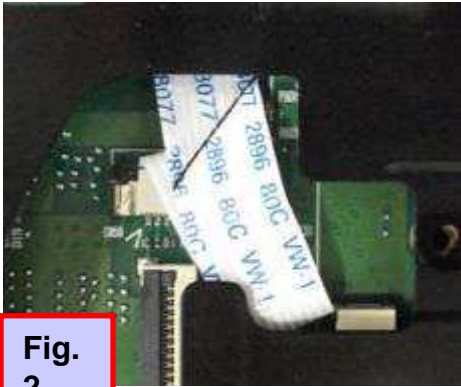
Date : 2010/03/08



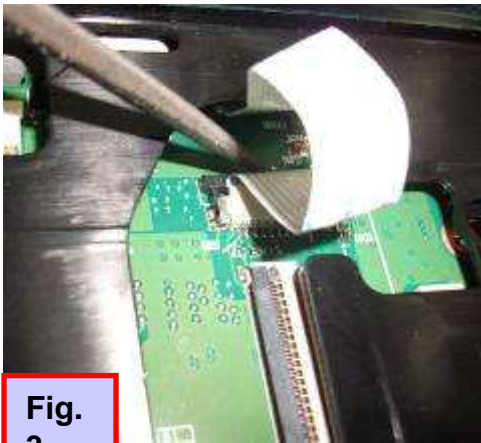
**Fig.
1**

STEP :

1. Push T/P CNTR lock slice aside, pull out FFC from M/B CNTR



**Fig.
2**



**Fig.
3**

Point for attention : If finding some defects, notice the gaffer and assistant

| Fixture list (Fixture standard) | Qty | Fixture list (Fixture standard) | Qty |
|-----------------------------------|-----|-----------------------------------|-----|
| | | | |

Tabulator : Zhang Ying

Issuing department : IE



Working Instruction

Document No. : SOP VV10 FA

Station : 19(1/1)

Name : Loosen screws (for 13'14')

Ver. : 0.20

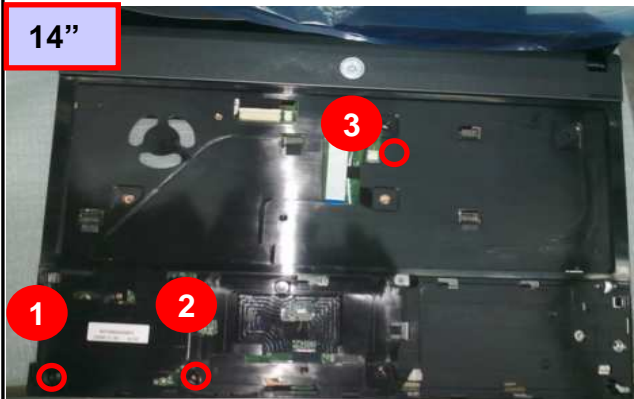
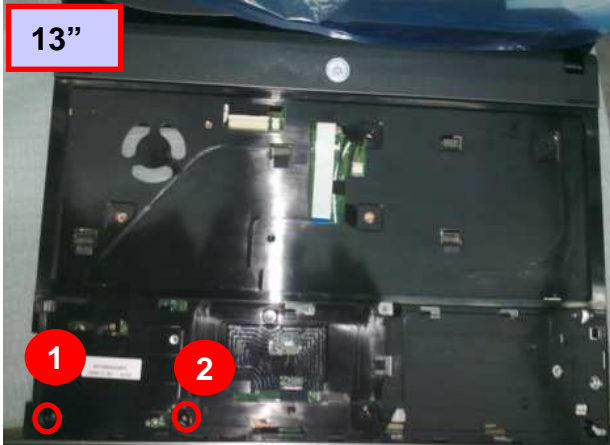
Date : 2010/03/08

STEP :

For 13&14

1.Loosen screws (60520D046304) ◦
(13''Loosen 2 screws,14''Loosen 3 screws) ◦

- ❖ Torsion : 2.0 ± 0.2 Kgf · cm
- ❖ Screws can't be stripped.



Point for attention : If finding some defects, notice the gaffer and assistant

| Fixture list (Fixture standard) | Qty | Fixture list (Fixture standard) | Qty |
|-------------------------------------|-----|-----------------------------------|-----|
| Automatic crossing screw driver(T8) | 1 | | |

Tabulator : Zhang Ying

Issuing department : IE



Working Instruction

Document No. : SOP VV10 FA

Station : 20(1/1)

Name : Loosen screws

Ver. : 0.20

Date : 2010/03/08

STEP :

1. 13'&14' Loosen screws (60520D046304) * 3.

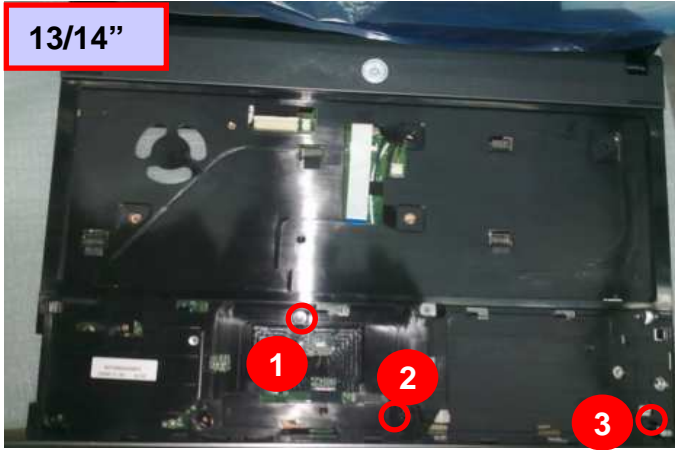
❖ Torsion : 2.0 ± 0.2 Kgf · cm

❖ Screws can't be stripped.

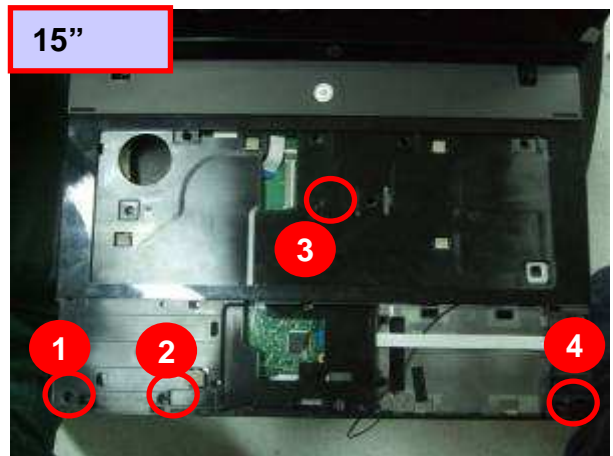
2. 15'Loosen screws (60520D046304) * 4.

❖ Torsion : 2.0 ± 0.2 Kgf · cm

❖ Screws can't be stripped.



13/14"



15"

FOR 13" & 14"

15"

Point for attention : If finding some defects, notice the gaffer and assistant

| Fixture list (Fixture standard) | Qty | Fixture list (Fixture standard) | Qty |
|-------------------------------------|-----|-----------------------------------|-----|
| Automatic crossing screw driver(T8) | 1 | | |

Tabulator : Zhang Ying

Issuing department : IE



Working Instruction

Document No. : SOP VV10 FA

Station : 21(1/1)

Name : Loosen screws(For 13&14)

Ver. : 0.20

Date : 2010/03/08

STEP :

For 13&14"

1. Loosen screws(6052B0080701) * 1 from
TPCB and BTCB ◦

❖ Torsion : $2.0 \pm 0.2\text{Kgf} \cdot \text{cm}$

❖ Screws can't be stripped.

2. Loosen screws (6052B0094301) * 1 ◦

❖ Torsion : $2.0 \pm 0.2\text{Kgf} \cdot \text{cm}$

❖ Screws can't be stripped.

FOR 13" & 14"



Screws
(6052B0080701)

Screws
(6052B0094301)

Point for attention : If finding some defects, notice the gaffer and assistant

| Fixture list (Fixture standard) | Qty | Fixture list (Fixture standard) | Qty |
|-----------------------------------|-----|-----------------------------------|-----|
| Automatic crossing screw driver | 1 | | |

Tabulator : Zhang Ying

Issuing department : IE



Working Instruction

Document No. : SOP VV10 FA

Station : 22(1/1)

Name : Disassemble TPCB from BTCB

Ver. : 0.20

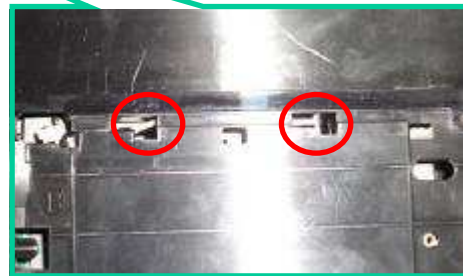
Date : 2010/03/08

STEP :

FOR ALL

1. Disassemble TPCB (Fig.1)

❖ Disassemble the audio jack first ◦



Point for attention : If finding some defects, notice the gaffer and assistant

| Fixture list (Fixture standard) | Qty | Fixture list (Fixture standard) | Qty |
|-----------------------------------|-----|-----------------------------------|-----|
| Automatic crossing screw driver | 1 | | |

Tabulator : Zhang Ying

Issuing department : IE



Working Instruction

Document No. : SOP VV10 FA

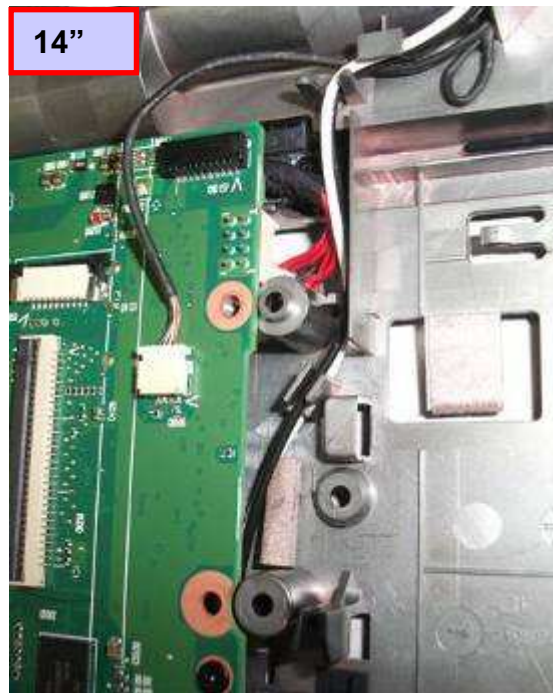
Station : 23(1/1)

Name : Disassemble antenna cable (for 13'14') Ver. : 0.20

Date : 2010/03/08

STEP :

1. Disassemble antenna cable
 - ❖ 13' Tear the tape of acetic acid
2pcs(6054A0076201)



Point for attention : If finding some defects, notice the gaffer and assistant

| Fixture list (Fixture standard) | Qty | Fixture list (Fixture standard) | Qty |
|-----------------------------------|-----|-----------------------------------|-----|
| | | | |

Tabulator : Zhang Ying

Issuing department : IE



Working Instruction

Document No. : SOP VV10 FA

Station : 24(1/1)

Name : Disassemble antenna cable

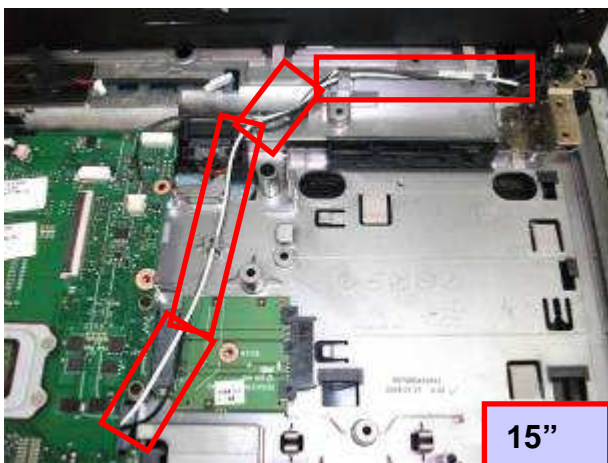
Ver. : 0.20

Date : 2010/03/08

STEP :

1. Disassemble antenna cable

❖ Disassemble antenna cable
(Fig.13" 14" 15")



Point for attention : If finding some defects, notice the gaffer and assistant

| Fixture list (Fixture standard) | Qty | Fixture list (Fixture standard) | Qty |
|-----------------------------------|-----|-----------------------------------|-----|
| | | | |

Tabulator : Zhang Ying

Issuing department : IE



Working Instruction

Document No. : SOP VV10 FA

Station : 25(1/1)

Name : Disassemble MIC cable

Ver. : 0.20

Date : 2010/03/08

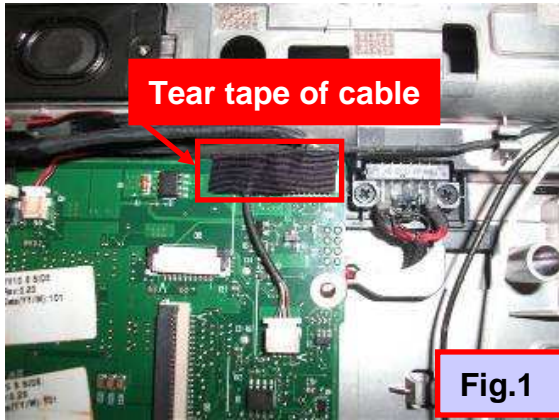


Fig.1

STEP :

1. Tear the tape of acetic acid from MIC cable (Fig.1)
2. Disassemble MIC cable (Fig.2)
3. Take down MIC Cable(Fig.4) .

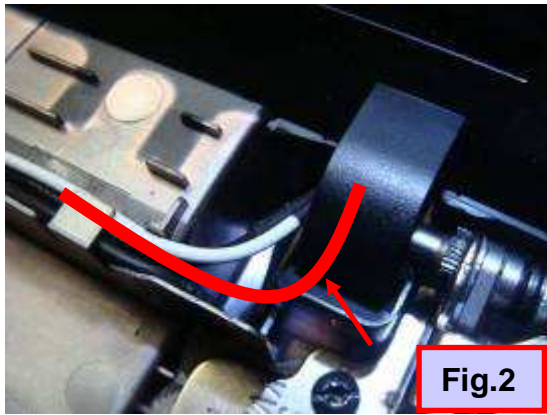


Fig.2

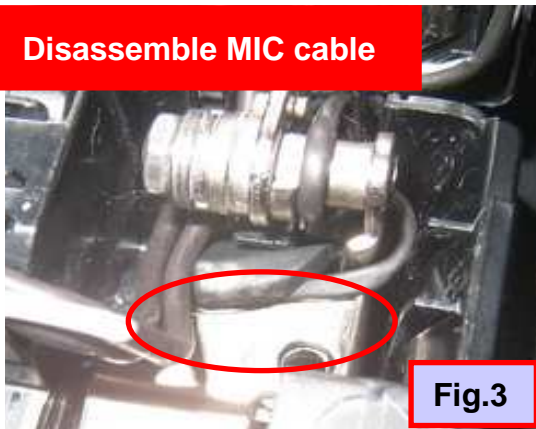


Fig.3

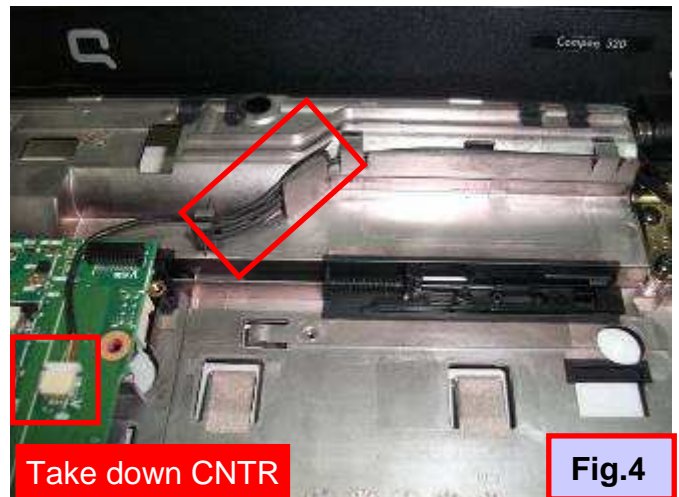


Fig.4

Point for attention : If finding some defects, notice the gaffer and assistant

| Fixture list (Fixture standard) | Qty | Fixture list (Fixture standard) | Qty |
|-----------------------------------|-----|-----------------------------------|-----|
| | | | |



Working Instruction

Document No. : SOP VV10 FA

Station : 26(1/1)

Name : Disassemble LCM cable/MSI cable

Ver. : 0.20

Date : 2010/03/08

STEP :

1. Disassemble MSI cable of M/B CNTR (Only for 15' MSI Model)
2. Tear the tape of LCM cable, Disassemble LCM cable.



Point for attention : If finding some defects, notice the gaffer and assistant

| Fixture list (Fixture standard) | Qty | Fixture list (Fixture standard) | Qty |
|-----------------------------------|-----|-----------------------------------|-----|
| | | | |

Tabulator : Zhang Ying

Issuing department : IE



Working Instruction

Document No. : SOP VV10 FA

Station : 27(1/1)

Name : Loosen screws (For Only 15) and disassemble cable

Ver. : 0.20 Date : 2010/03/08

STEP :

For all:

1. Disassemble cable.

15"

2. Loosen screws (60520D046304)* 3.

❖ Torsion: 3.0 ± 0.2 Kgf. cm

❖ Screws can't be stripped.

For Only 15"



Point for attention : If finding some defects, notice the gaffer and assistant

| Fixture list (Fixture standard) | Qty | Fixture list (Fixture standard) | Qty |
|-------------------------------------|-----|-----------------------------------|-----|
| Automatic crossing screw driver(T8) | 1 | | |
| Disassemble线棒 | 1 | | |

Tabulator : Zhang Ying

Issuing department : IE



Working Instruction

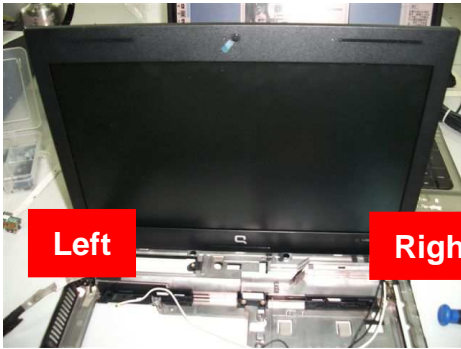
Document No. : SOP VV10 FA

Station : 28(1/1)

Name : Loosen screws

Ver. : 0.20

Date : 2010/03/08



STEP :

13" & 14"

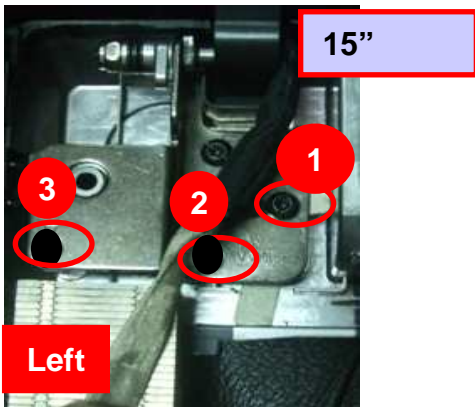
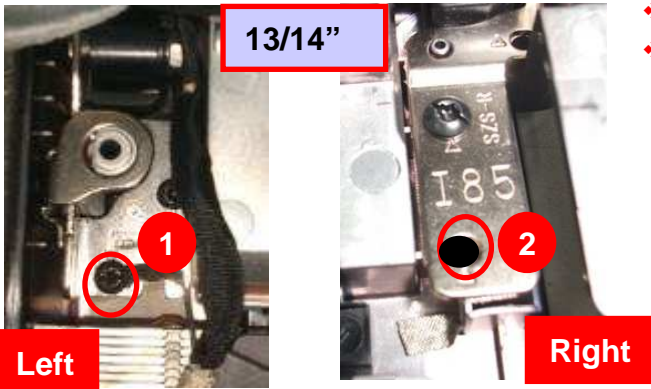
1. Loosen screws (60520D046304) * 2

- ❖ Torsion : 3.0 ± 0.2 Kgf · cm
- ❖ Screws can't be stripped.

15"

1. Loosen screws (60520D046304) * 3

- ❖ Torsion: 3.0 ± 0.2 Kgf. cm
- ❖ Screws can't be stripped.



Point for attention : If finding some defects, notice the gaffer and assistant

| Fixture list (Fixture standard) | Qty | Fixture list (Fixture standard) | Qty |
|-------------------------------------|-----|-----------------------------------|-----|
| Automatic crossing screw driver(T8) | 1 | | |

Tabulator : Zhang Ying

Issuing department : IE



Working Instruction

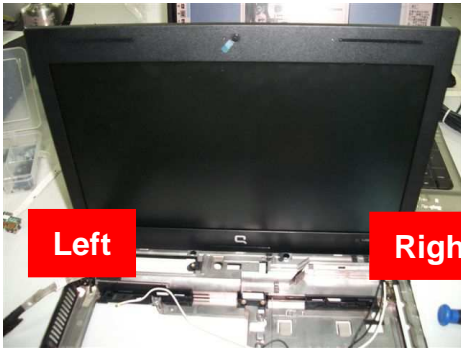
Document No. : SOP VV10 FA

Station : 29(2/2)

Name : Loosen screws & Disassemble LCM

Ver. : 0.20

Date : 2010/03/08

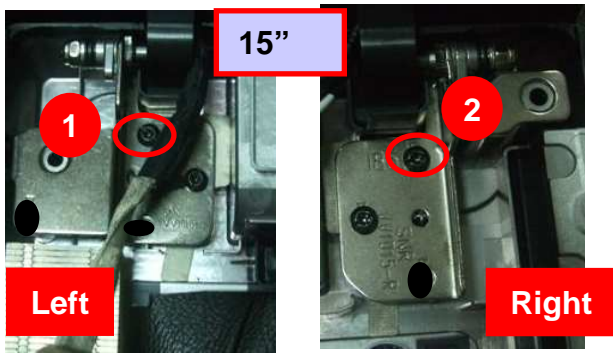
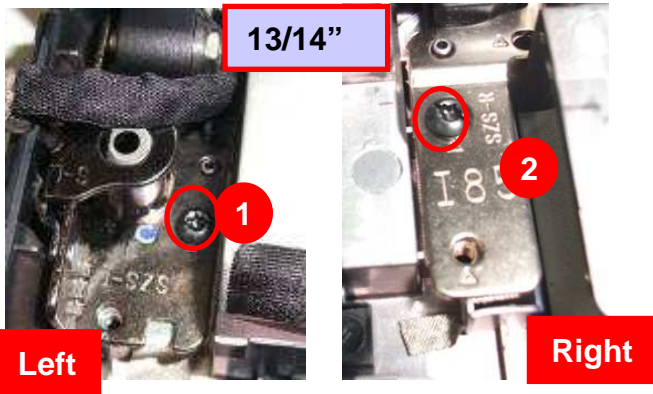


STEP :

1. Hands support one side of LCM, and loosen screws (60520D046304)* 2.

- ❖ Torsion: 3.0 ± 0.2 Kgf. cm
- ❖ Screws can't be stripped.
- ❖ (Fig.13"/14" 15")

2. Take down the LCM.



Point for attention : If finding some defects, notice the gaffer and assistant

| Fixture list (Fixture standard) | Qty | Fixture list (Fixture standard) | Qty |
|-------------------------------------|-----|-----------------------------------|-----|
| Automatic crossing screw driver(T8) | 1 | | |

Tabulator : Zhang Ying

Issuing department : IE



Working Instruction

Document No. : SOP VV10 FA

Station : 30(1/1)

Name : Disassemble speaker cable

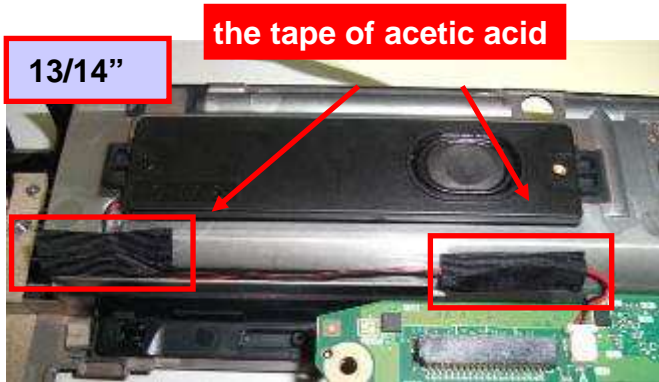
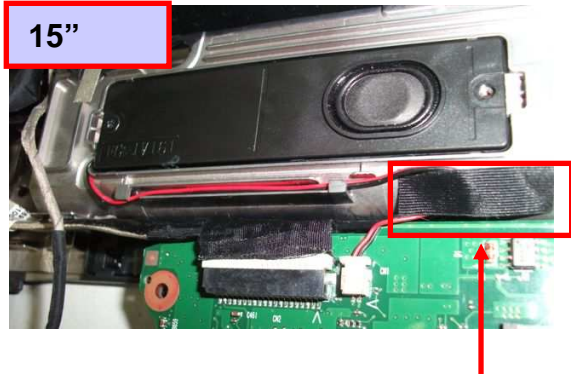
Ver. : 0.20

Date : 2010/03/08

STEP :

1. Take down the speaker cable from M/B CNTR
2. Disassemble speaker cable

- ❖ 13'14' : Tear the tape of acetic acid (6054A0076201) 2pcs
- ❖ cable15' : Tear the tape of acetic acid (6054A0076201) 1pcs



Point for attention : If finding some defects, notice the gaffer and assistant

| Fixture list (Fixture standard) | Qty | Fixture list (Fixture standard) | Qty |
|-----------------------------------|-----|-----------------------------------|-----|
| | | | |

Tabulator : Zhang Ying

Issuing department : IE



Working Instruction

Document No. : SOP VV10 FA

Station : 31(1/1)

Name : Loosen ODD extension board
screw & Disassemble Speaker

Ver. : 0.20

Date : 2010/03/08

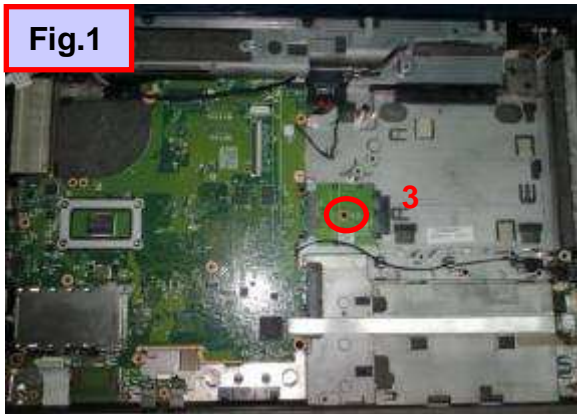
STEP :

1. Loosen ODD extension board screw
(6052B0156101)*1 (Only for15") (Fig.1)

- ❖ Torsion: 1.5 ± 0.2 Kgf. cm
- ❖ Screws can't be stripped.

2.Loosen screws(6052B0156101)*2 (Fig.2)
And take down the Speaker(6039B0039401)

- ❖ Torsion: 1.5 ± 0.2 Kgf. cm
- ❖ Screws can't be stripped.



Point for attention : If finding some defects, notice the gaffer and assistant

| Fixture list (Fixture standard) | Qty | Fixture list (Fixture standard) | Qty |
|-----------------------------------|-----|-----------------------------------|-----|
| Automatic crossing screw driver | 1 | | |

Tabulator : Zhang Ying

Issuing department : IE



Working Instruction

Document No. : SOP VV10 FA

Station : 32(1/1)

Name : Disassemble Blue tooth Cable

Ver. : 0.20

Date : 2010/03/08

STEP :

13/14''

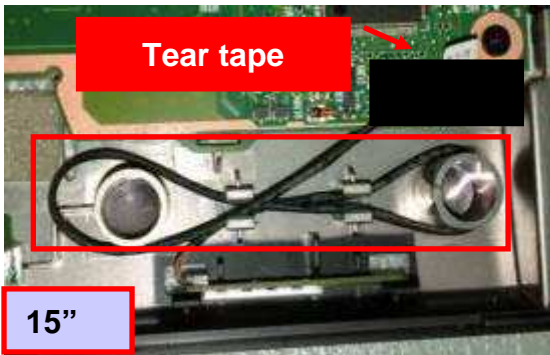


For 13&14:

1. Tear the tape of acetic acid (6054A0076201)
*1 from cable.

For 15:

1. Tear the tape of acetic acid (6054A0076201)
*1 from cable.



15''

Point for attention : If finding some defects, notice the gaffer and assistant

| Fixture list (Fixture standard) | Qty | Fixture list (Fixture standard) | Qty |
|-----------------------------------|-----|-----------------------------------|-----|
| | | | |

Tabulator : Zhang Ying

Issuing department :





Working Instruction

Document No. : SOP VV10 FA

Station : 33(1/1)

Name : Disassemble B/T cable (for B/T model) Ver. : 0.20

Date : 2010/03/08



Fig.1

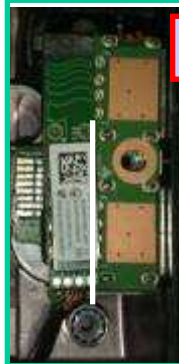


Fig.2

STEP :

For 13&14:

1. Disassemble cable from M/B CNTR

For 15:

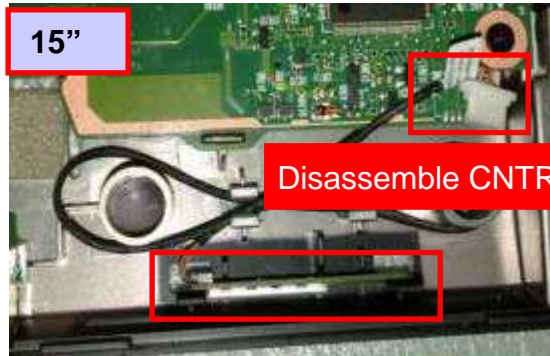
1. Disassemble cable from M/B CNTR
2. Take down B/T

3. Disassemble 下 B/T cable(6017B0260601)。

13/14"



Disassemble CNTR



15"

Disassemble CNTR

Point for attention : If finding some defects, notice the gaffer and assistant

| Fixture list (Fixture standard) | Qty | Fixture list (Fixture standard) | Qty |
|-----------------------------------|-----|-----------------------------------|-----|
| | | | |

Tabulator : Zhang Ying

Issuing department : IE



Working Instruction

Document No. : SOP VV10 FA

Station : 34(1/1)

Name : Disassemble USB/B

Ver. : 0.20 Date : 2010/03/08

For 15"

STEP :



Fig.1

- 1, Disassemble FFC of M/B CNTR.
- 2, Tear all the tape.
- 3, Disassemble the USB/B.
 - ❖ 13' 14' Disassemble the USB directly
 - ❖ 15' Loosen the screws of USB/B (6052B0080701) *1 (Fig.3)
 - ❖ Torsion : $2.0 \pm 0.2 \text{Kgf} \cdot \text{cm}$
 - ❖ Screws can't be stripped.



13''



15''

Loosen screw

Fig.3



14''



Fig.2

Point for attention : If finding some defects, notice the gaffer and assistant

| Fixture list (Fixture standard) | Qty | Fixture list (Fixture standard) | Qty |
|-----------------------------------|-----|-----------------------------------|-----|
| Automatic crossing screw driver | 1 | | |

Tabulator : Zhang Ying

Issuing department : IE



Working Instruction

Document No. : SOP VV10 FA

Station : 35(1/1)

Name : Disassemble RJ11 / Loosen screws

Ver. : 0.20

Date : 2010/03/08

STEP :

1. Disassemble RJ11 cable (Fig.2)

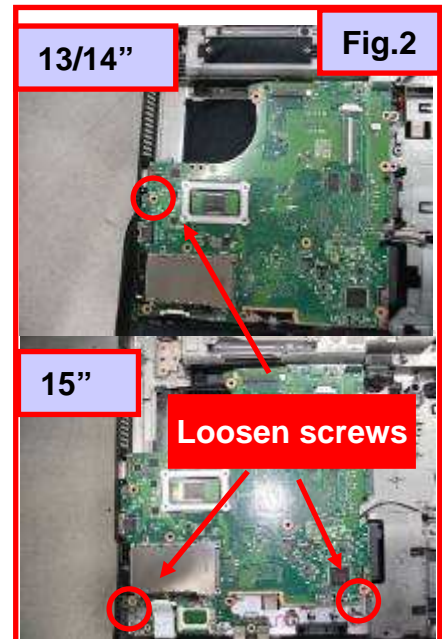
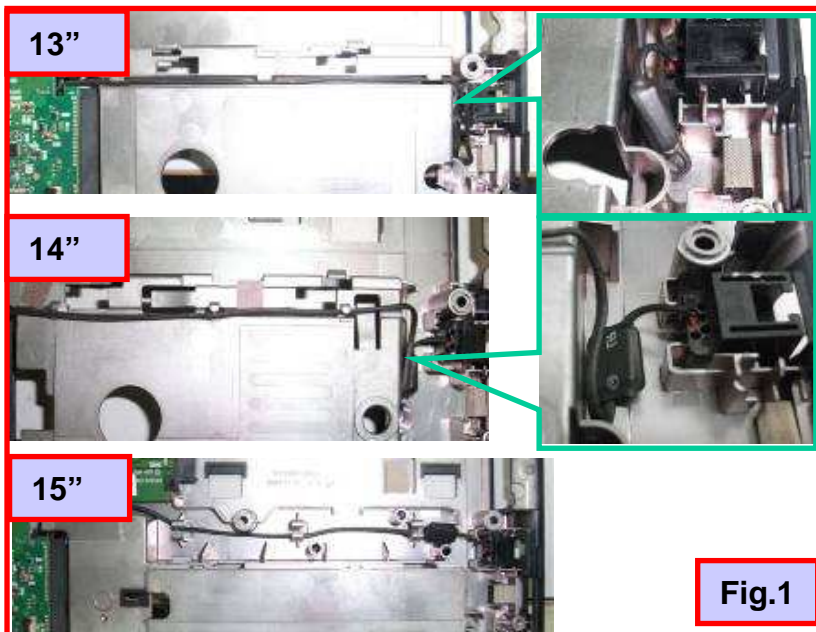
2. Loosen M/B screws

❖ 13'14' Loosen M/B screws (60520D046304)*1

❖ 15' Loosen M/B screws (60520D046304)*2 (Fig.1)

❖ Torsion: 2.0 ± 0.2 Kgf. cm

❖ Screws can't be stripped.



Point for attention : If finding some defects, notice the gaffer and assistant

| Fixture list (Fixture standard) | Qty | Fixture list (Fixture standard) | Qty |
|-------------------------------------|-----|-----------------------------------|-----|
| Automatic crossing screw driver(T8) | 1 | | |

Tabulator : Zhang Ying

Issuing department : IE



Working Instruction

Document No. : SOP VV10 FA

Station : 36(1/1)

Name : Disassemble M/B

Ver. : 0.20

Date : 2010/03/08



STEP :

For 13 & 14

1. Take down the FFC from M/B

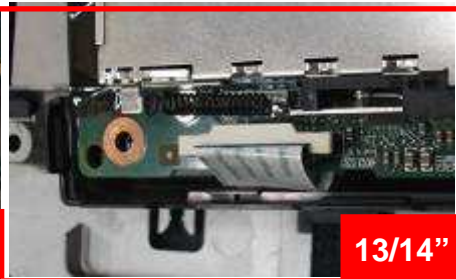
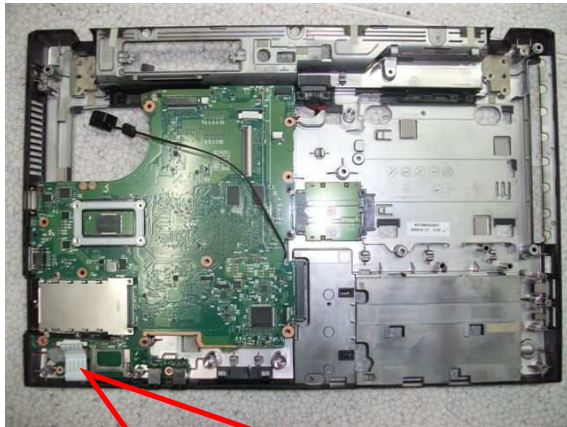
For15

1. Disassemble the FFC from Audio/B

For All

2. Take down the Audio/B FFC

For 15



Point for attention : If finding some defects, notice the gaffer and assistant

| Fixture list (Fixture standard) | Qty | Fixture list (Fixture standard) | Qty |
|-----------------------------------|-----|-----------------------------------|-----|
| | | | |

Tabulator : Zhang Ying

Issuing department : IE



Working Instruction

Document No. : SOP VV10 FA

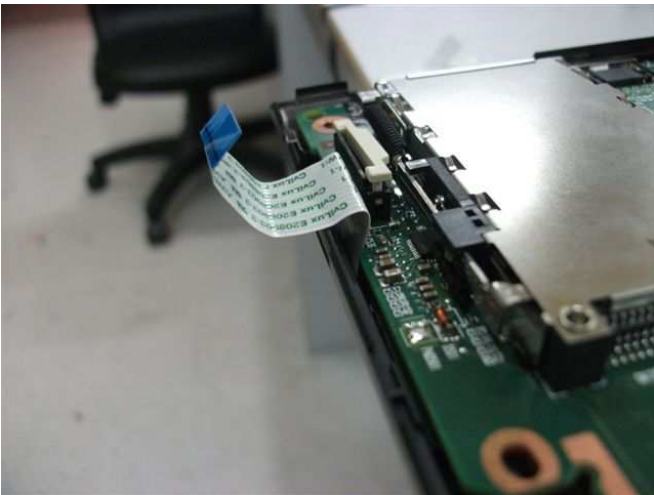
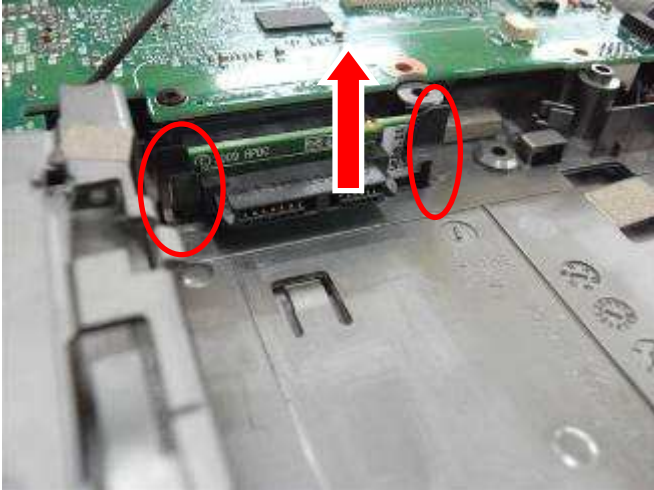
Station : 37(1/2)

Name : Disassemble M/B

Ver. : 0.20

Date : 2010/03/08

STEP :



Point for attention : If finding some defects, notice the gaffer and assistant

| Fixture list (Fixture standard) | Qty | Fixture list (Fixture standard) | Qty |
|-----------------------------------|-----|-----------------------------------|-----|
| | | | |

Tabulator : Zhang Ying

Issuing department : IE



Working Instruction

Document No. : SOP VV10 FA

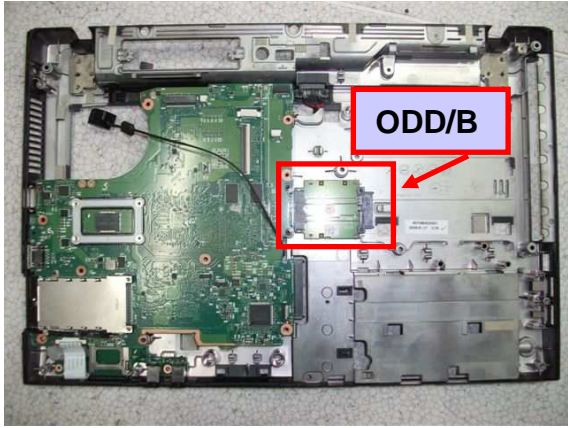
Station : 37(2/2)

Name : Disassemble M/B

Ver. : 0.20

Date : 2010/03/08

For 15



STEP :

For All

1. Disassemble the ODD extension board from M/B

❖ 15" ODD extension board (1310A2330601)

❖ 14" ODD extension board (1310A2342701)

2. Disassemble MB ◦

❖ Tilt M/B right side first .

❖ 14' Need to pull down the card trough ODD/B

For 14"



For 13"

Point for attention : If finding some defects, notice the gaffer and assistant

| Fixture list (Fixture standard) | Qty | Fixture list (Fixture standard) | Qty |
|-----------------------------------|-----|-----------------------------------|-----|
| | | | |

Tabulator : Zhang Ying

Issuing department : IE



Working Instruction

Document No. : SOP VV10 FA

Station : 38(1/1)

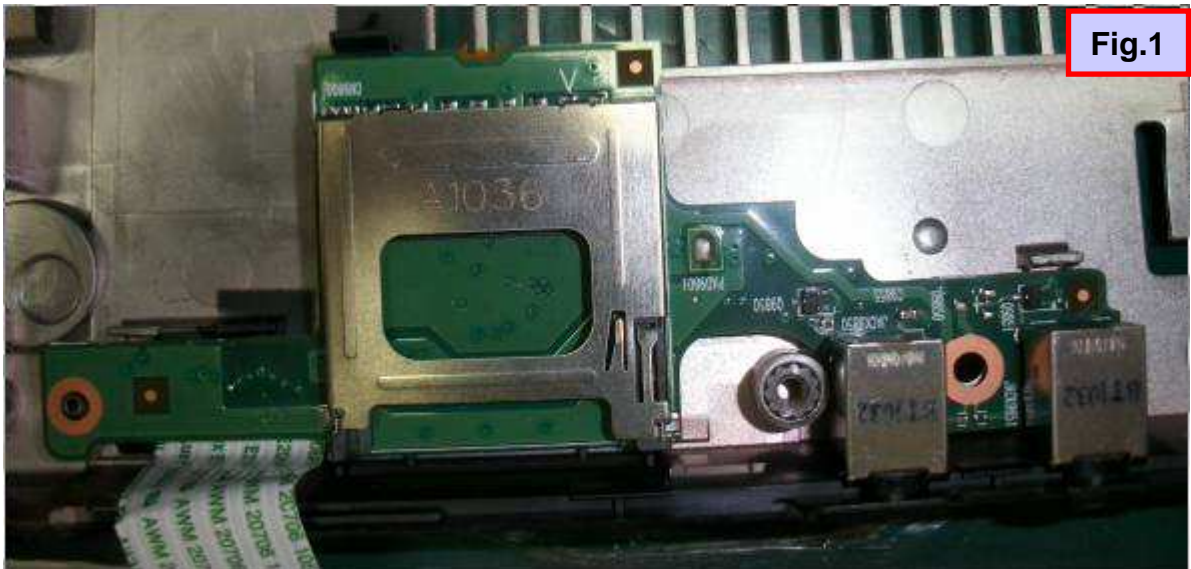
Name : Disassemble Audio/B

Ver. : 0.20

Date : 2010/03/08

STEP :

1. The left hand holds up BTCB gently , and the right hand disassemble Audio/B,(Fig.1)



Point for attention : If finding some defects, notice the gaffer and assistant

| Fixture list (Fixture standard) | Qty | Fixture list (Fixture standard) | Qty |
|-----------------------------------|-----|-----------------------------------|-----|
| | | | |

Tabulator : Zhang Ying

Issuing department : IE



Working Instruction

Document No. : SOP VV10 FA

Station : 39(1/1)

Name : Disassemble BATT Cable

Ver. : 0.20

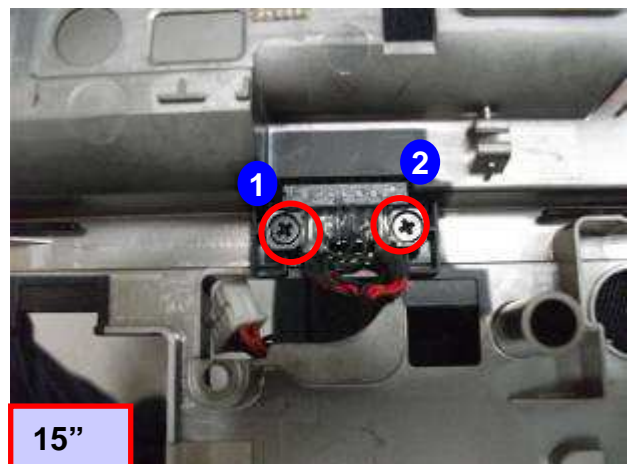
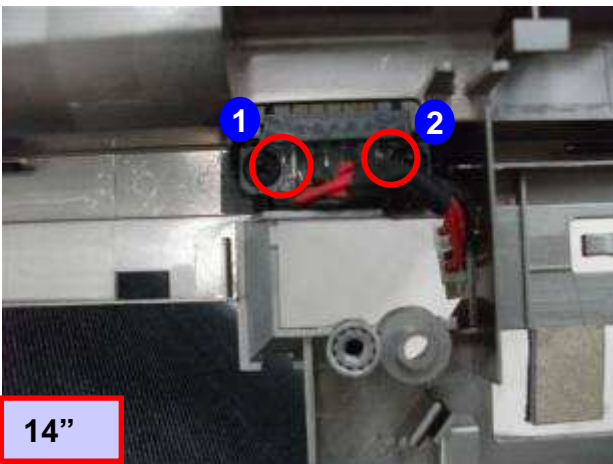
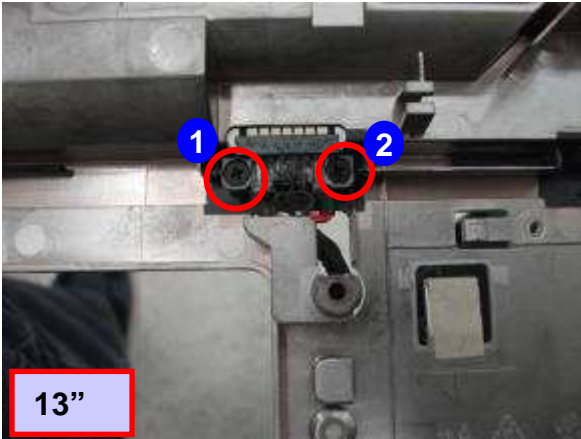
Date : 2010/03/08

STEP :

For All:

- Loosen screws (6052B0094301) * 2 .
 - ❖ Torsion: $1.5 \pm 0.2\text{Kgf. cm}$
 - ❖ Screws can't be stripped.

- Take down the BATT Cable (6017B0261201)



Point for attention : If finding some defects, notice the gaffer and assistant

| Fixture list (Fixture standard) | Qty | Fixture list (Fixture standard) | Qty |
|-----------------------------------|-----|-----------------------------------|-----|
| Automatic crossing screw driver | 1 | | |

Tabulator : Zhang Ying

Issuing department : IE



Working Instruction

Document No. : SOP VV10 FA

Station : 40(1/1)

Name : Disassemble THERMAL (For AMD DIS) Ver. : 0.20

Date : 2010/03/08

STEP :

For AMD DIS:

1. Loosen Thermal screws(6052B0156101) * 2 ◦

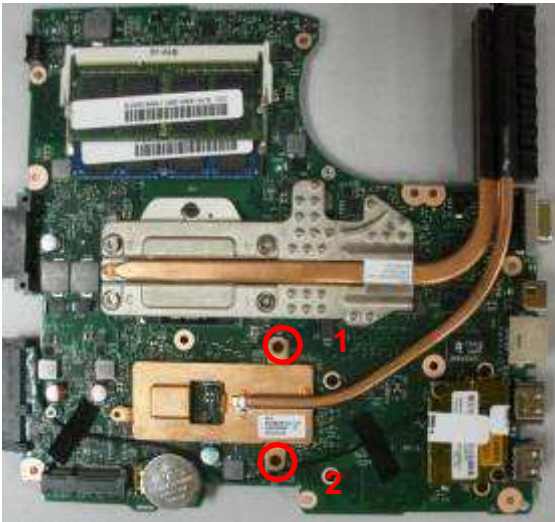
❖ Torsion : $1.5 \pm 0.2\text{Kgf} \cdot \text{cm}$

❖ Screws can't be stripped.

❖ Don't hold the Copper Pipe of Thermal.

2. Disassemble THERMAL MODULE

(6043B0081501) ◦



Point for attention : If finding some defects, notice the gaffer and assistant

| Fixture list (Fixture standard) | Qty | Fixture list (Fixture standard) | Qty |
|-----------------------------------|-----|-----------------------------------|-----|
| Automatic crossing screw driver | 1 | | |

Tabulator : Zhang Ying

Issuing department : IE



Working Instruction

Document No. : SOP VV10 FA

Station : 41(1/1)

Name : Disassemble Thermal & Loosen Screws Ver. : 0.20

Date : 2010/03/08

STEP :

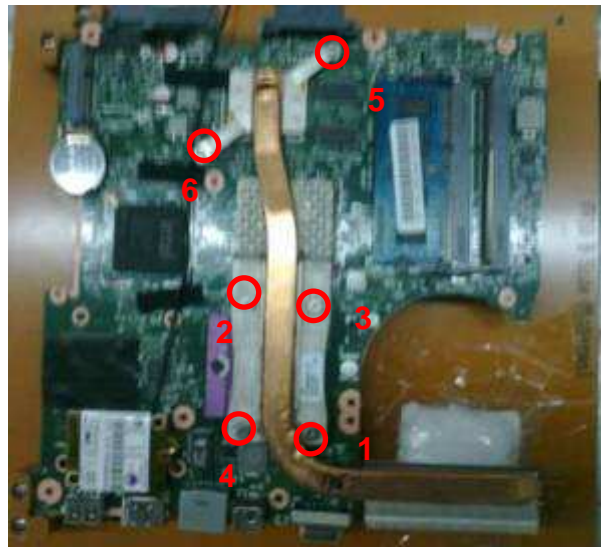
1. Loosen the screws of thermal.

❖ Torsion: 1.5 ± 0.2 Kgf. Cm

❖ Screws can't be stripped.

❖ Don't hold the Copper Pipe of Thermal.

2. Disassemble the Thermal Module from M/B .



Point for attention : If finding some defects, notice the gaffer and assistant

| Fixture list (Fixture standard) | Qty | Fixture list (Fixture standard) | Qty |
|-----------------------------------|-----|-----------------------------------|-----|
| Automatic crossing screw driver | 1 | | |

Tabulator : Zhang Ying

Issuing department : IE



Working Instruction

Document No. : SOP VV10 FA

Station : 42(1/1)

Name : Disassemble CPU & DDR

Ver. : 0.20

Date : 2010/03/08



Fig.1

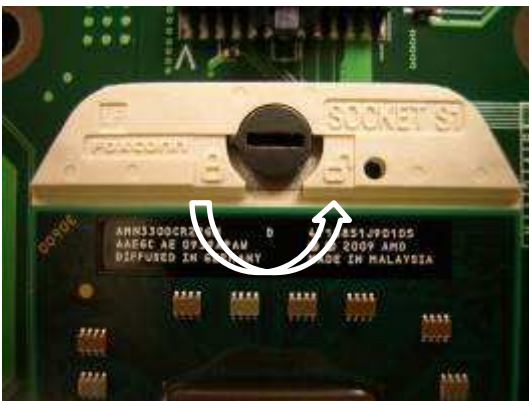


Fig.2

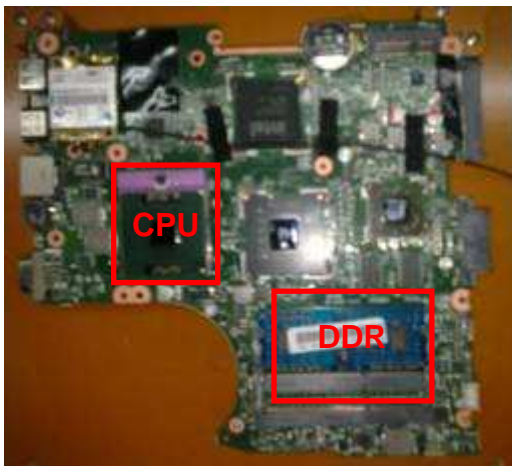


Fig.3

STEP :

1. Disassemble DDR * 2 from M/B CNTR
(If there is only one DDR, only need to insert one DDR)
2. Loosen CPU SOCKET , and take it down.
(Loosen anticlockwise) °

Point for attention : If finding some defects, notice the gaffer and assistant

| Fixture list (Fixture standard) | Qty | Fixture list (Fixture standard) | Qty |
|------------------------------------|-----|-----------------------------------|-----|
| Flat screw driver | 1 | | |
| suck pen | 1 | | |
| VV10 M/B B side supporting fixture | 1 | | |

Tabulator : Zhang Ying

Issuing department : IE



Working Instruction

Document No. : SOP VV10 FA

Station : 43(1/4)

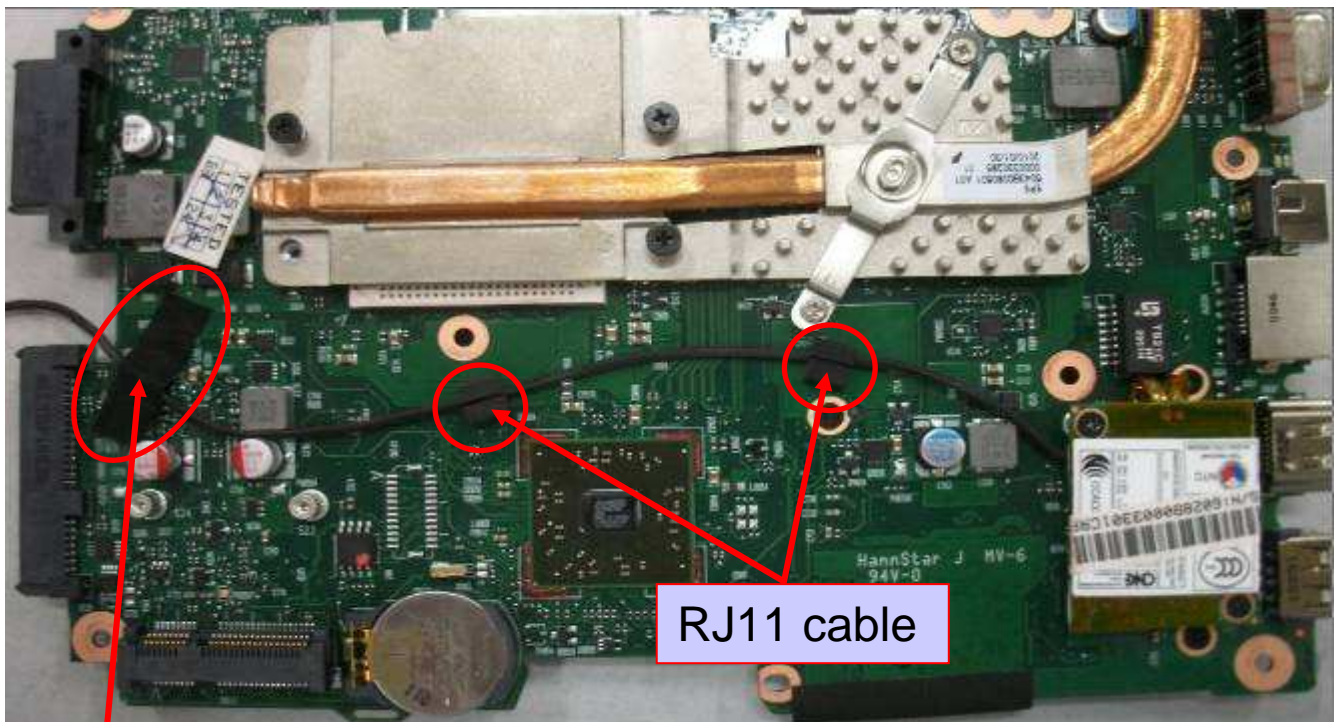
Name : Disassemble RJ11 cable (For AMD DIS) Ver. : 0.20

Date : 2010/03/08

STEP :

For AMD UMA:

1. Tear the tape of acetic acid (6054A0076201) *1 , Disassemble RJ11 Cable (Fig.1)



Tear the tape of acetic acid

Point for attention : If finding some defects, notice the gaffer and assistant

| Fixture list (Fixture standard) | Qty | Fixture list (Fixture standard) | Qty |
|-----------------------------------|-----|-----------------------------------|-----|
| B side supporting fixture | 1 | | |

Tabulator : Zhang Ying

Issuing department : IE



Working Instruction

Document No. : SOP VV10 FA

Station : 43(2/4)

Name : DisassembleRJ11线(For AMD DIS)

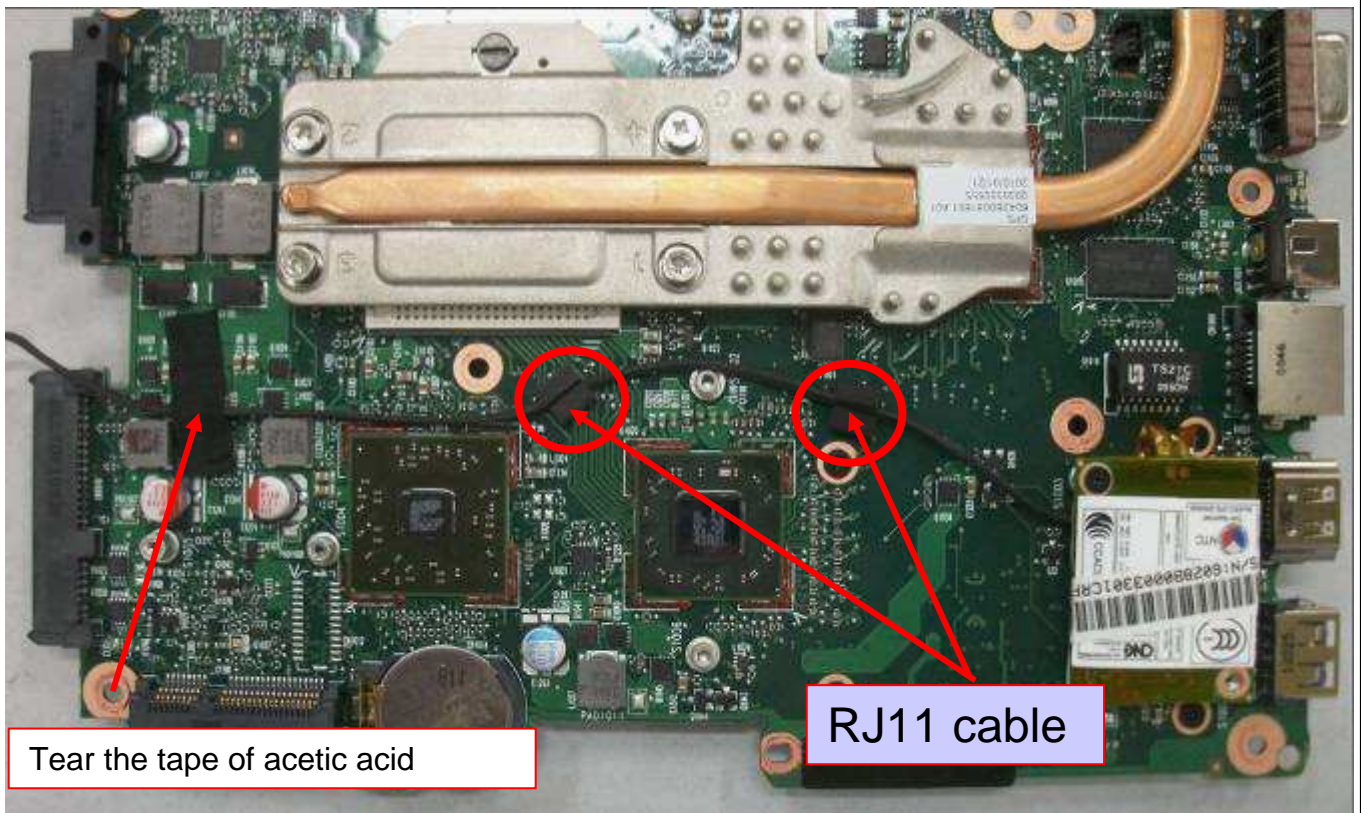
Ver. : 0.20

Date : 2010/03/08

STEP :

For AMD DIS:

1. Tear 下 the tape of acetic acid (6054A0076201) *1 , DisassembleRJ11 Cable (Fig.1)



Tear the tape of acetic acid

RJ11 cable

Point for attention : If finding some defects, notice the gaffer and assistant

| Fixture list (Fixture standard) | Qty | Fixture list (Fixture standard) | Qty |
|-----------------------------------|-----|-----------------------------------|-----|
| B side supporting fixture | 1 | | |

Tabulator : Zhang Ying

Issuing department : IE



Working Instruction

Document No. : SOP VV10 FA

Station : 43(3/4)

Name : Disassemble RJ11 cable (For INTELUMA)

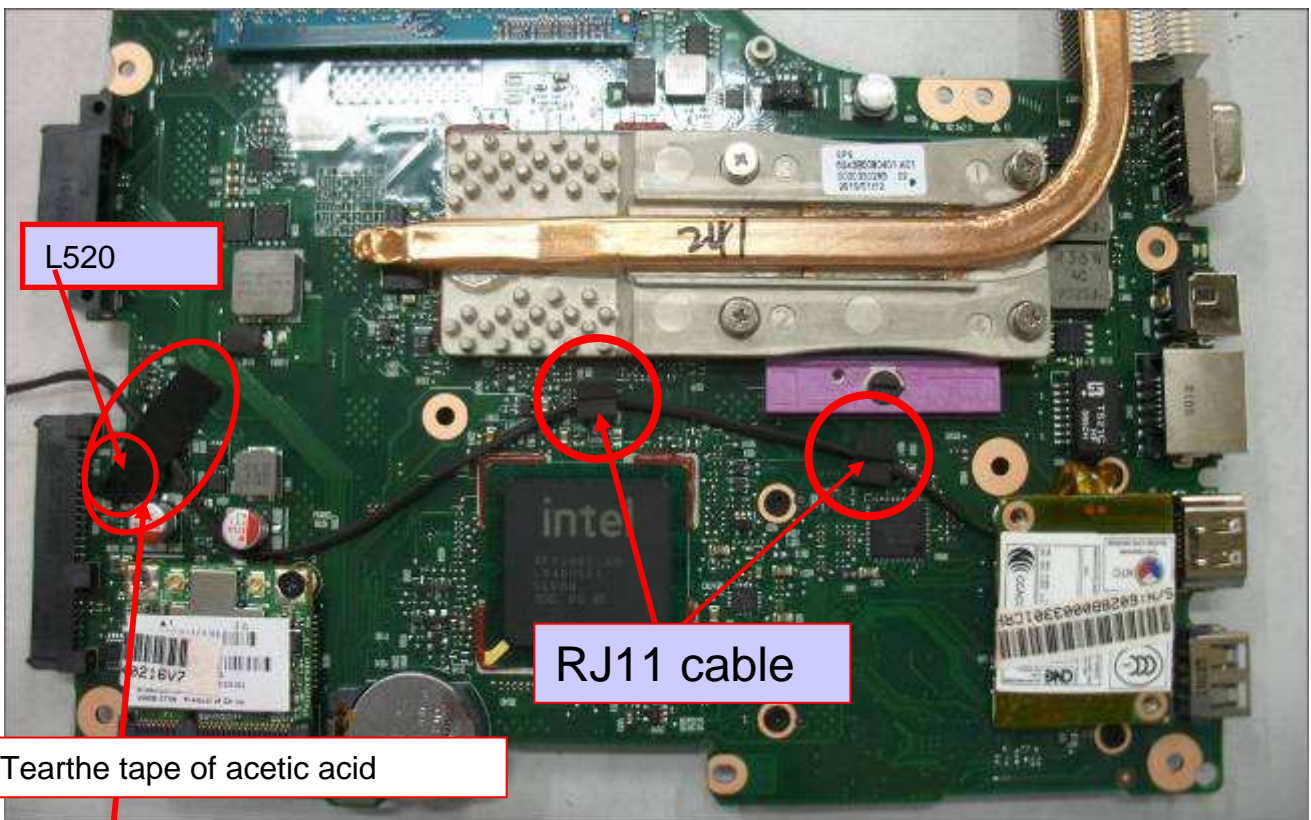
Ver. : 0.20

Date : 2010/03/08

STEP :

For INTEL UMA

1. Tear 下 the tape of acetic acid (6054A0076201) *1 , Disassemble RJ11 Cable (Fig.1)



Point for attention : If finding some defects, notice the gaffer and assistant

| Fixture list (Fixture standard) | Qty | Fixture list (Fixture standard) | Qty |
|-----------------------------------|-----|-----------------------------------|-----|
| B side supporting fixture | 1 | | |

Tabulator : Zhang Ying

Issuing department : IE



Working Instruction

Document No. : SOP VV10 FA

Station : 43(4/4)

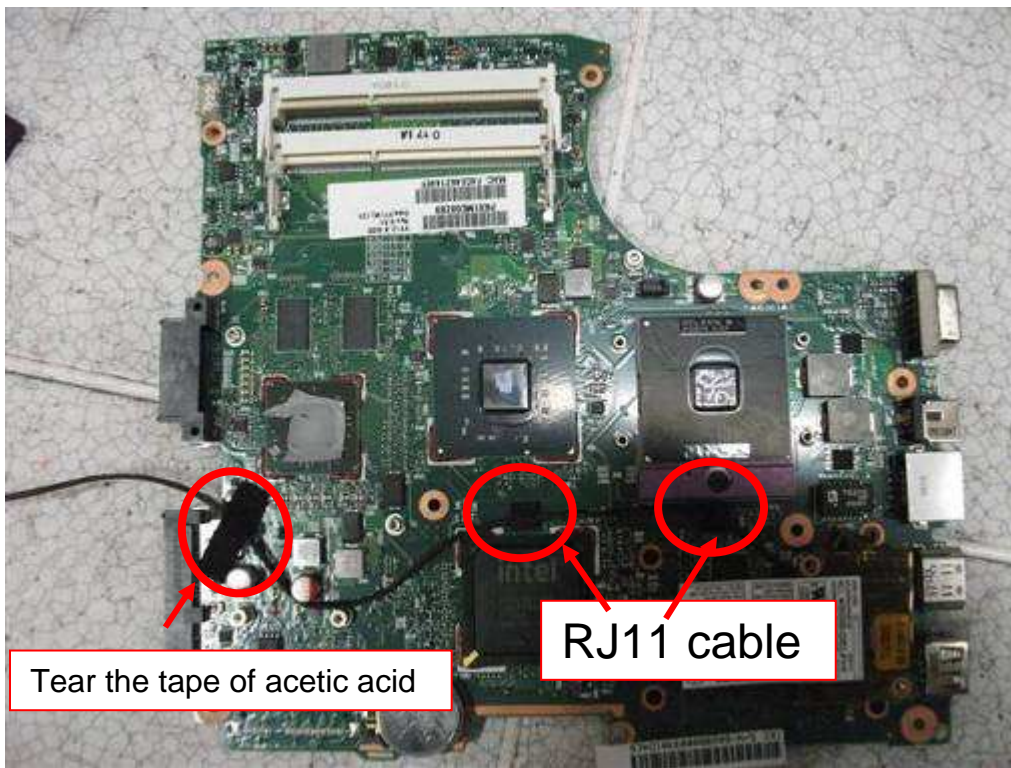
Name : Disassemble RJ11 cabel (For INTEL DIS) Ver. : 0.20

Date : 2010/03/08

STEP :

For INTEL DIS

1. Tear 下 the tape of acetic acid (6054A0076201) *1 , Disassemble RJ11 Cable (Fig.1)



Point for attention : If finding some defects, notice the gaffer and assistant

| Fixture list (Fixture standard) | Qty | Fixture list (Fixture standard) | Qty |
|-----------------------------------|-----|-----------------------------------|-----|
| B side supporting fixture | 1 | | |

Tabulator : Zhang Ying

Issuing department : IE



Working Instruction

Document No. : SOP VV10 FA

Station : 44(1/1)

Name : Disassemble RJ11 Cable

Ver. : 0.20

Date : 2010/03/08

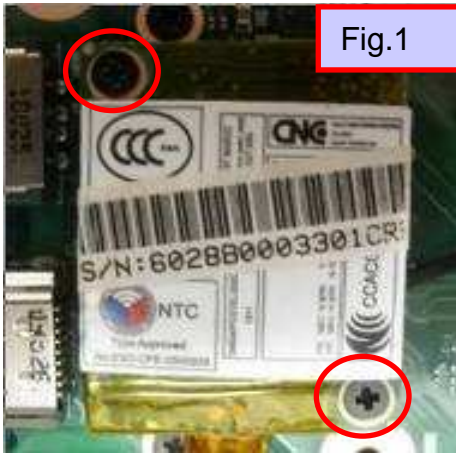


Fig.1

STEP :

1. Loosen crews (6052B0156101) *2 of boss .
 - ❖ Torsion: 1.5 ± 0.2 Kgf. cm
 - ❖ Screws can't be stripped.
2. Disassemble the RJ11 Cable (6017B0199901) from Modem(Fig.2, Fig.3)



Fig.2

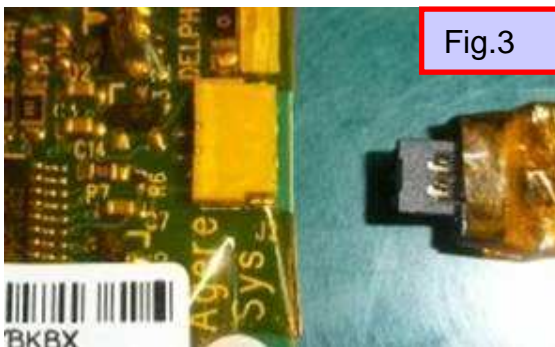


Fig.3

Point for attention : If finding some defects, notice the gaffer and assistant

| Fixture list (Fixture standard) | Qty | Fixture list (Fixture standard) | Qty |
|-----------------------------------|-----|-----------------------------------|-----|
| Automatic crossing screw driver | 1 | | |
| B side supporting fixture | 1 | | |

Tabulator : Zhang Ying

Issuing department : IE



Working Instruction

Document No. : SOP VV10 FA

Station : 45(1/1)

Name : Disassemble Touchpad/B

Ver. : 0.20

Date : 2010/03/08

STEP :

1. Tear the tape(6054B0141101)*1, (Fig.2)
2. Disassemble Touchpad/B FFC .



Point for attention : If finding some defects, notice the gaffer and assistant

| Fixture list (Fixture standard) | Qty | Fixture list (Fixture standard) | Qty |
|-----------------------------------|-----|-----------------------------------|-----|
| | | | |

Tabulator : Zhang Ying

Issuing department : IE



Working Instruction

Document No. : SOP VV10 FA

Station : 46(1/1)

Name : Disassemble Touchpad/B

Ver. : 0.20

Date : 2010/03/08



STEP :

1. Loosen screws (6052B0156101) * 1

❖ Torsion: 1.5 ± 0.2 Kgf. cm

❖ Screws can't be stripped.

2. Disassemble Touchpad/B(1310A2342901)



Point for attention : If finding some defects, notice the gaffer and assistant

| Fixture list (Fixture standard) | Qty | Fixture list (Fixture standard) | Qty |
|-----------------------------------|-----|-----------------------------------|-----|
| Automatic crossing screw driver | 1 | | |

Tabulator : Zhang Ying

Issuing department : IE



Working Instruction

Document No. : SOP VV10 FA

Station : 47(1/1)

Name : Loosen screws & Disassemble power/B Ver. : 0.20

Date : 2010/03/08

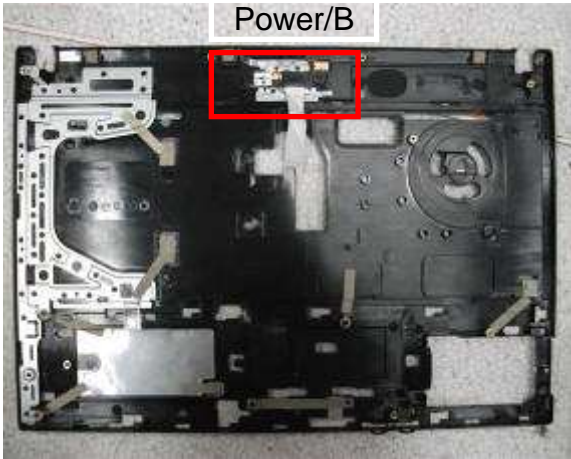


Fig.1

STEP :

For 15'

1. Tear tape of acetic acid of FFC(6054A0076201)*1 (Fig.3)
2. Loosen screws (6052B0096201) * 1 .
 - ❖ Torsion: $1.5 \pm 0.2\text{Kgf. cm}$
 - ❖ Screws can't be stripped.
 - ❖ While loosening the screws, hands need to pin the power/B
3. Disassemble power/B(1310A2343201), (Fig.2, Fig.3) °

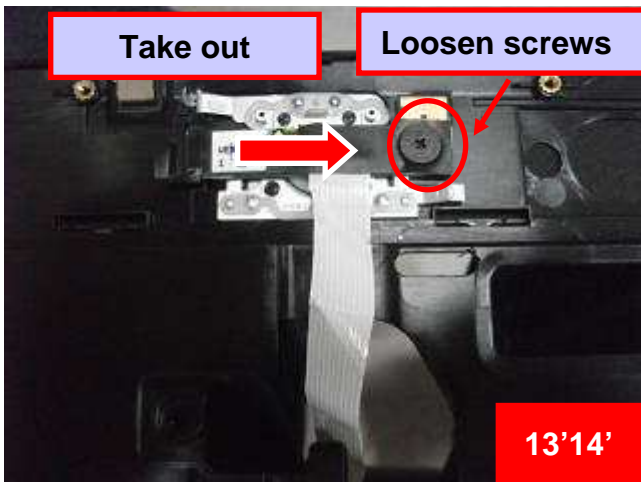


Fig.2

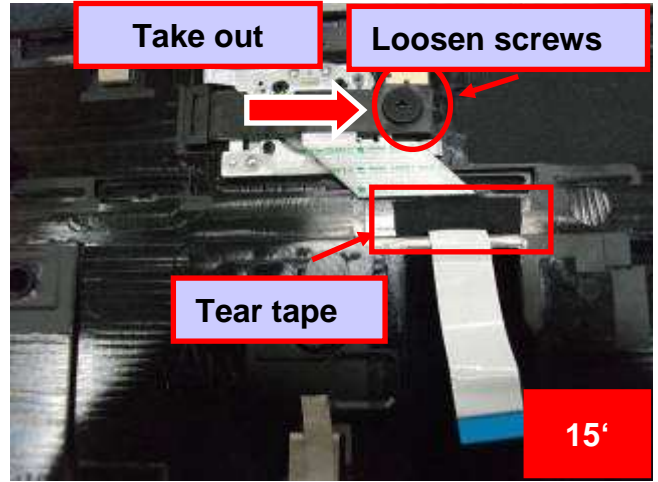


Fig.3

Point for attention : If finding some defects, notice the gaffer and assistant

| Fixture list (Fixture standard) | Qty | Fixture list (Fixture standard) | Qty |
|-----------------------------------|-----|-----------------------------------|-----|
| Automatic crossing screw driver | 1 | | |

Tabulator : Zhang Ying

Issuing department : IE